

Generation and Reservoirs Statistics

September 18, 2023



PUBLIC UTILITIES COMMISSION OF SRI LANKA

1. Daily Generation Mix in MWh

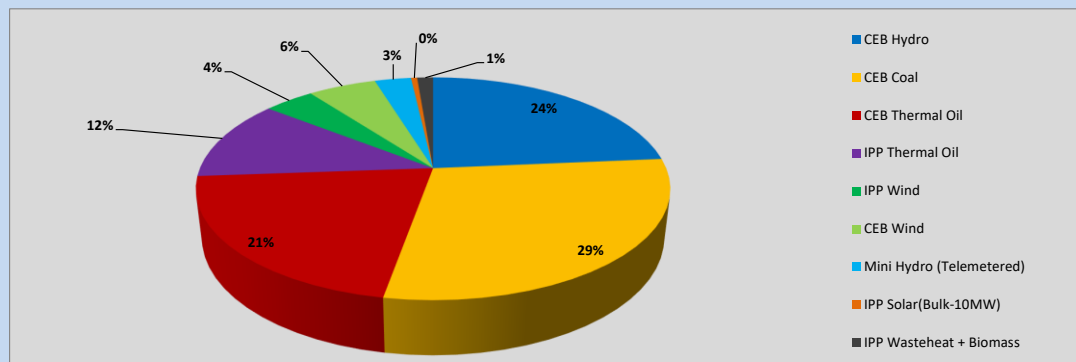


Table 01

	Generation (MWh)
CEB Hydro	8,982
CEB Coal	11,110
CEB Thermal Oil	8,009
IPP Thermal Oil	4,460
IPP Wind	1,562
CEB Wind	2,114
Mini Hydro (Telemetered)	1,130
IPP Solar (Bulk)	189
IPP Waste heat + Biomass	494
Total Generation (Excluding estimated figures)	38,050
* Estimated unserved energy	0
* Estimated Mini Hydro (Non telemetered)	2510
* Estimated IPP Solar PV (Bulk 1-10MW)	304
* Estimated Solar Roof Top PV	1660
Total Generation (Including estimated figures)	42,524

* Estimated figures of CEB generation report

Table 02

	Installed Capacity (MW)
CEB Hydro	1409
CEB Coal	810
CEB Thermal Oil	781
IPP Thermal Oil (West Coast, ACE Matara and ACE Embilipitiya)	387
IPP Wind	148
CEB Wind	100
Mini Hydro	416
IPP Waste heat + Biomass	50
IPP Solar	130
Rooftop Solar* (Ordinary)	267
Rooftop Solar* (LT Bulk)	256
Rooftop Solar* (HT Bulk)	61

Data Source - Monthly Review Report [May-2023]

2. Cumulative Dispatch

Following data excludes the contribution from roof top solar, non telemetered solar and mini hydro plants

Table 03 - Current Month

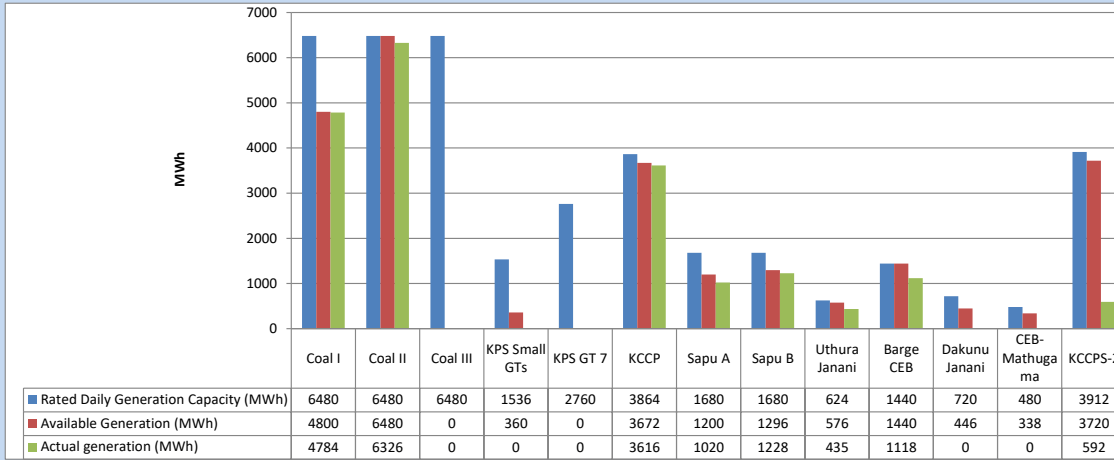
Category	Dispatch (GWh)	
CEB Hydro	148	22.31%
CEB Coal	210	31.58%
CEB Thermal Oil	127	19.11%
IPP Thermal	63	9.51%
SPP Wind	40	6.05%
CEB Wind	39	5.85%
Mini Hydro (Telemetered)	26	3.88%
IPP Solar(Bulk-10MW)	5	0.69%
IPP Waste heat + BMP	7	1.02%
Total	666	

Table 04 - Current Year

Category	Dispatch (GWh)	
CEB Hydro	2,447	24.17%
CEB Coal	3,795	37.48%
CEB Thermal Oil	1,813	17.90%
IPP Thermal	1,053	10.40%
SPP Wind	301	2.97%
CEB Wind	308	3.04%
Mini Hydro (Telemetered)	236	2.33%
IPP Solar(Bulk-10MW)	79	0.78%
IPP Waste heat	94	0.93%
Total	10,126	

3. CEB owned Thermal Plant Dispatch

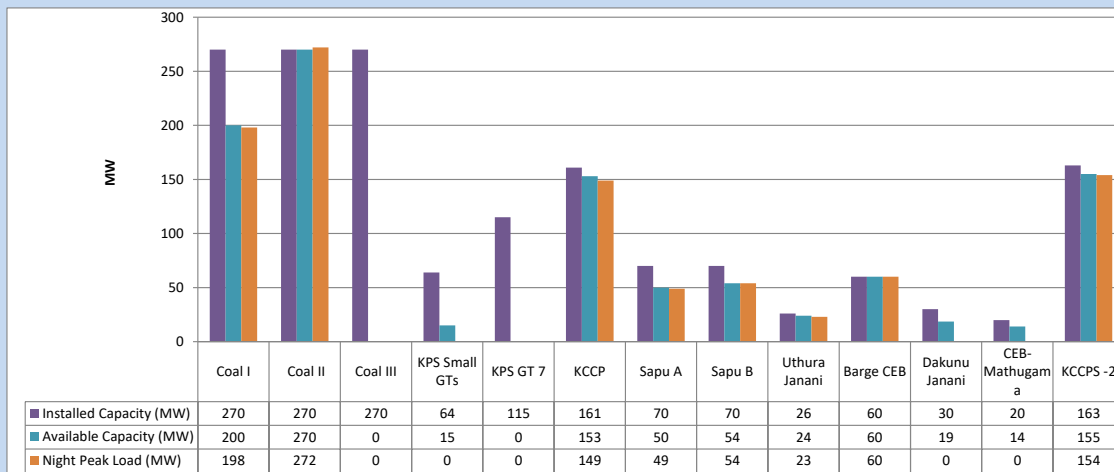
September 18, 2023



Available Generation is estimated based on plant availability at 6.00am on

September 19, 2023

4. CEB owned Thermal Plant Loading at the Night Peak

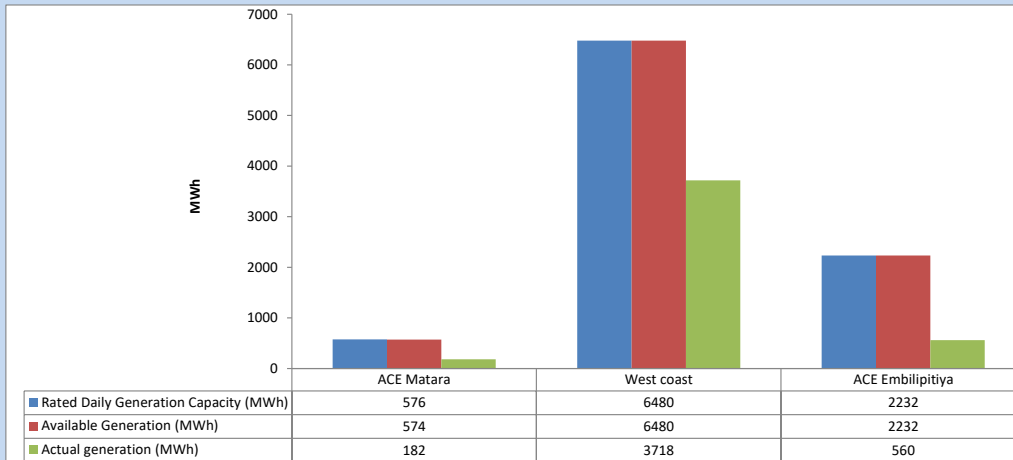


Plant availability is recorded at 6.00 am on

September 19, 2023

5. IPP owned Thermal Plant Dispatch

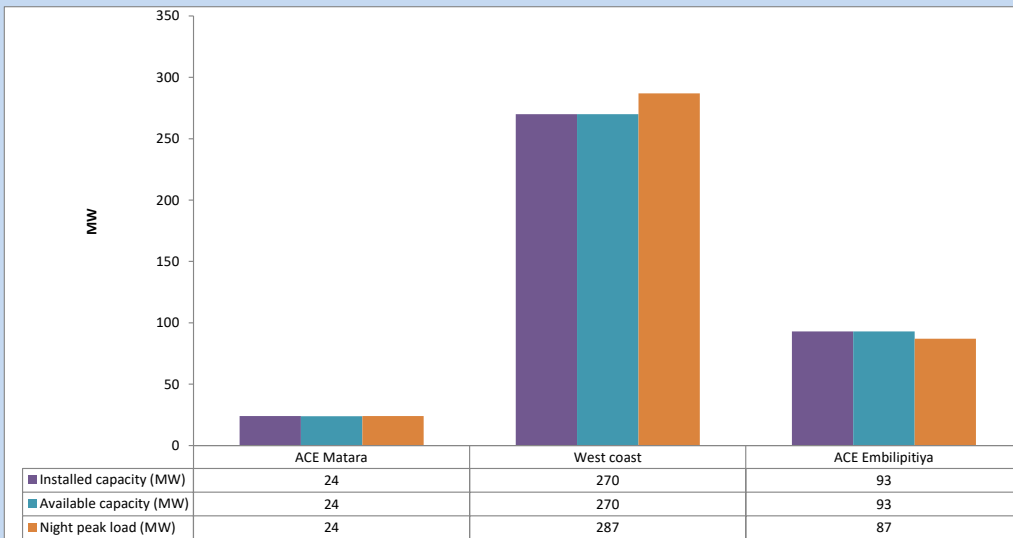
September 18, 2023



Available Generation is estimated based on plant availability at 6.00am on

September 19, 2023

6. IPP owned Thermal Plant Loading at the Night Peak

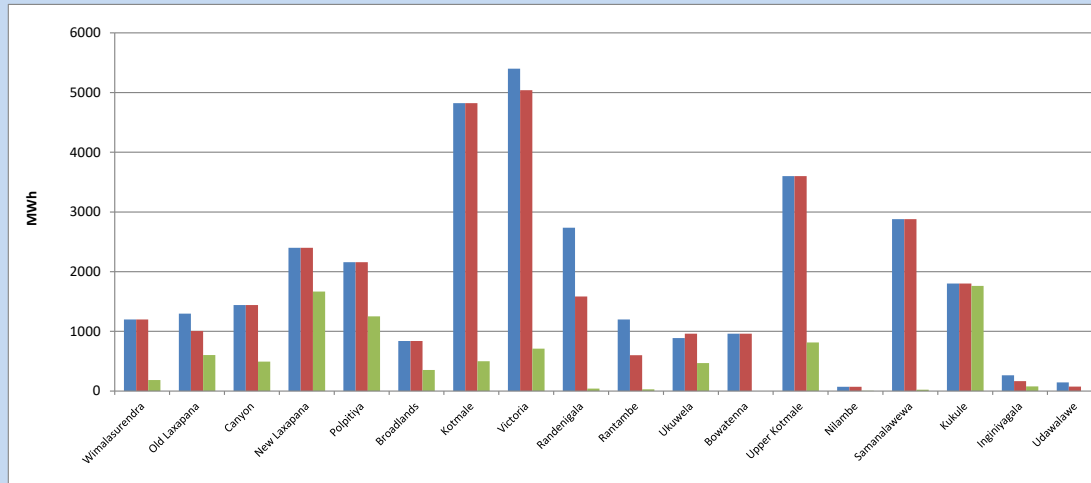


Plant availability is recorded at 6.00 am on

September 19, 2023

7. Major Hydro Plant Dispatch

September 18, 2023

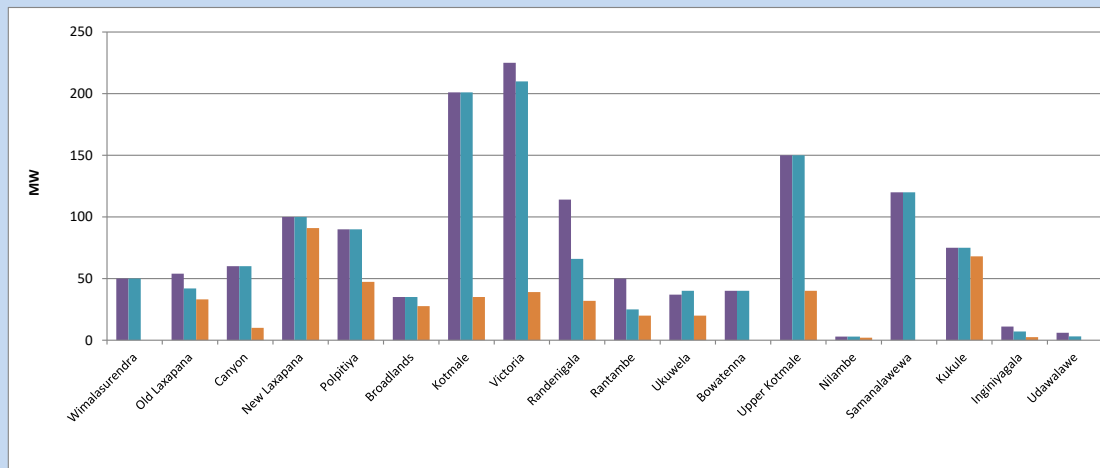


Available Generation is estimated based on plant availability at 6.00am on September 19, 2023
Broadlands power plant is operating in the Commissioning Stage

September 19, 2023

8. Major Hydro Plant Loading at Night Peak

September 18, 2023



Plant availability is recorded at 6.00 am on September 19, 2023
Broadlands power plant is operating in the Commissioning Stage

September 19, 2023

9. Summary of Major Plant performance

Table 05

Plant	Installed Capacity (MW)	Plant Availability (MW)	Night peak Load (MW)	Plant Dispatch (MWh)
Wimalasurendra	50	50	0	186
Old Laxapana	54	42	33	602
Canyon	60	60	10	493
New Laxapana	100	100	91	1,667
Polpitiya	90	90	47	1,250
Broadlands	35	35	28	353
Kotmale	201	201	35	500
Victoria	225	210	39	711
Randenigala	114	66	32	41
Rantambe	50	25	20	30
Ukuwela	37	40	20	469
Bowatenna	40	40	0	0
Upper Kotmale	150	150	40	814
Nilambe	3	3	2	5
Samanalawewa	120	120	0	22
Kukule	75	75	68	1,761
Inginiyagala	11	7	3	78
Udawalawe	6	3	0	0
Puttalam Coal I	270	200	198	4,784
Puttalam Coal II	270	270	272	6,326
Puttalam Coal III	270	0	0	0
KPS Small GTs	64	15	0	0
KPS GT 7	115	0	0	0
KCCP	161	153	149	3,616
Sapugaskanda A	70	50	49	1,020
Sapugaskanda B	70	54	54	1,228
Uthura Janani	26	24	23	435
Barge CEB	60	60	60	1,118
CEB-Hambantota	30	19	0	0
CEB-Mathugama	20	14	0	0
ACE Matara	24	24	24	182
Asia Power	50	0	0	0
KCCPS -2	163	155	154	592
West Coast	270	270	287	3,718
Nothern Power	36	0	0	0
ACE Embilipitiya	93	93	87	560
Total	3,483	2,718	2,033	38,050

Plant availability is the availability recorded at 6 am on

September 19, 2023

10. Contribution to the Night Peak in MW

September 18, 2023

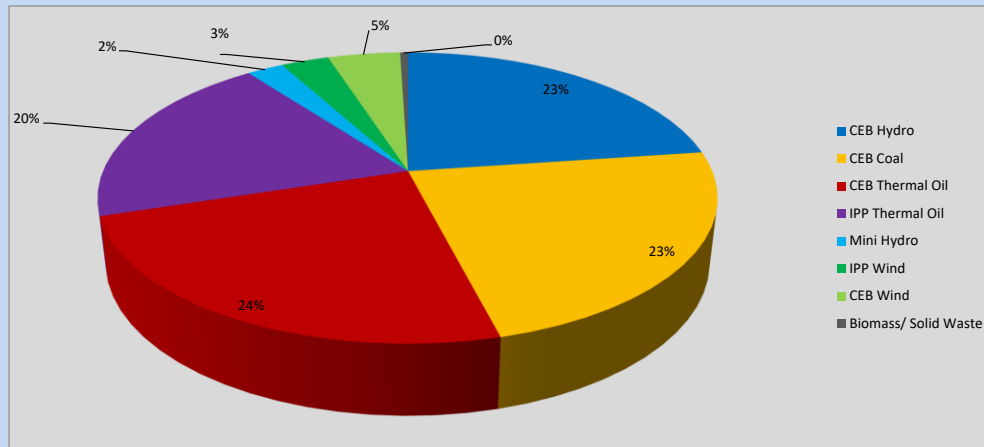


Table 06

CEB Hydro	463	MW
CEB Coal	470	MW
CEB Thermal Oil	489	MW
IPP Thermal Oil	398	MW
Mini Hydro (Telemetered)	46	MW
IPP Wind	60.6	MW
CEB Wind	91.4	MW
Biomass/ Solid Waste	10	MW

Recorded Peak Demand Data

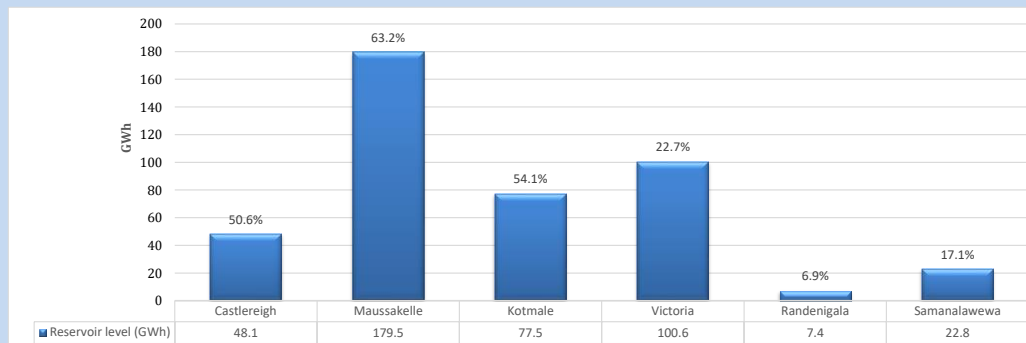
Table 07

Night Peak*	2,028	MW
Day Peak Maximum Demand	1,802	MW
Day Peak Minimum Demand	1,666	MW
Off Peak Minimum Demand	1,076	MW

Above figures are excluding contribution from roof top solar, non telemetered solar and mini hydro plants

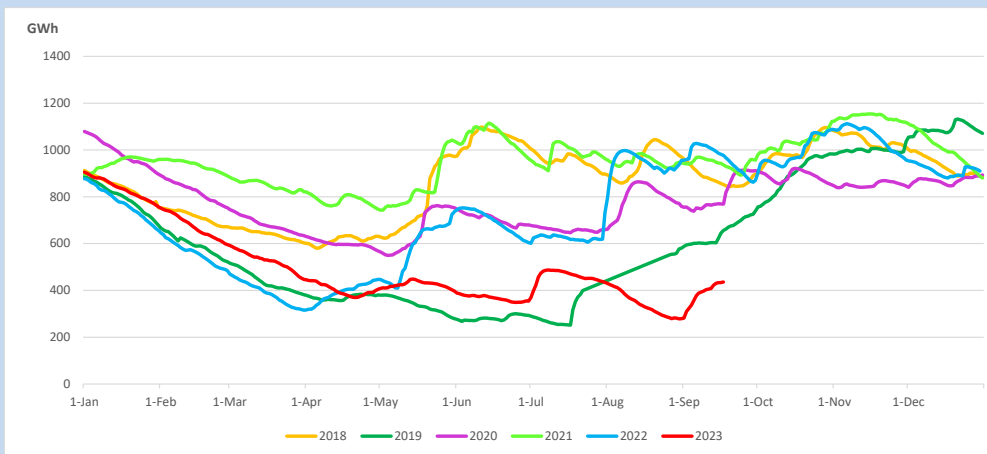
Reservoir Levels -

as at 06.00 Hr on September 19, 2023

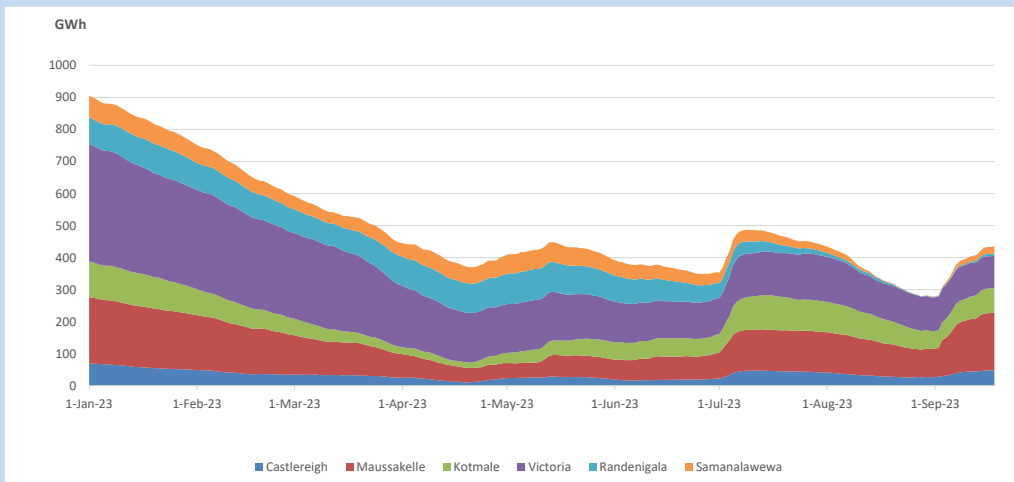


Total Reservoir Level 435.9 GWh
% of Total capacity 36.1%

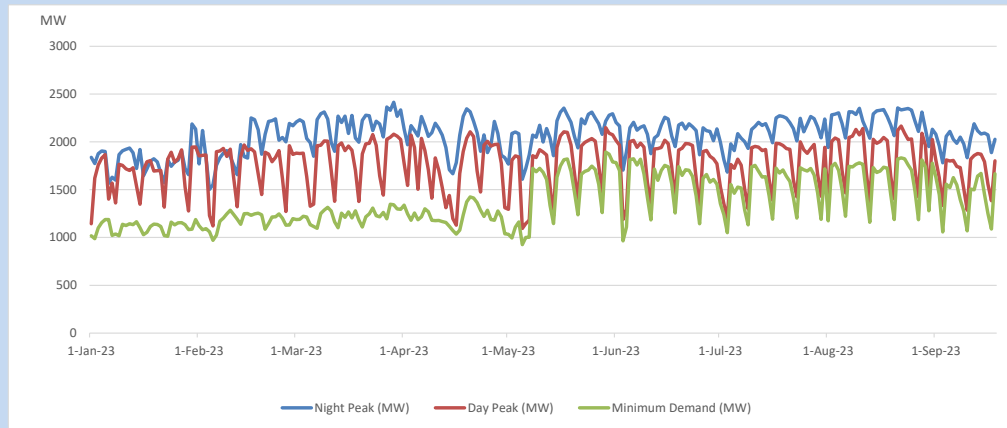
11. Comparison of Total Reservoir Storage Levels with Past Years



12. Variation of Major Hydro Reservoir Levels in the current year (GWh)



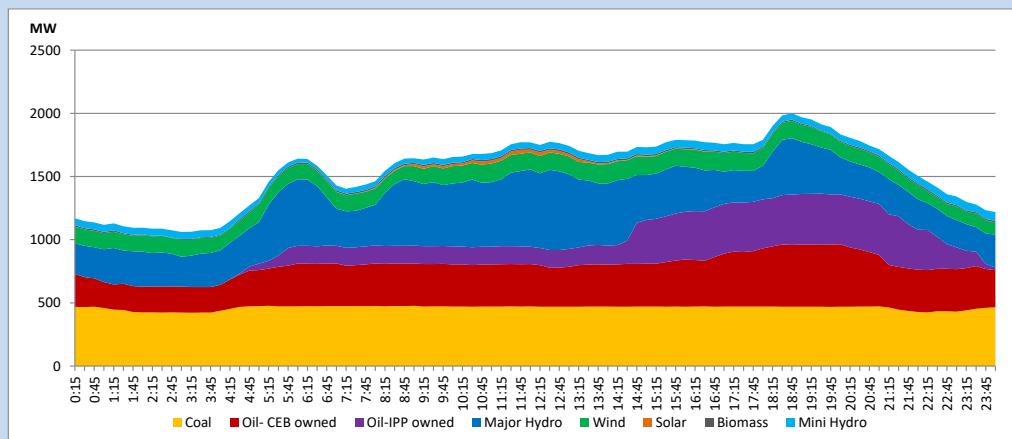
13. Variation of Demand during the current year



The above figures are excluding contribution from roof top solar, non telemetered solar and mini hydro plants

14. Daily Load Curve

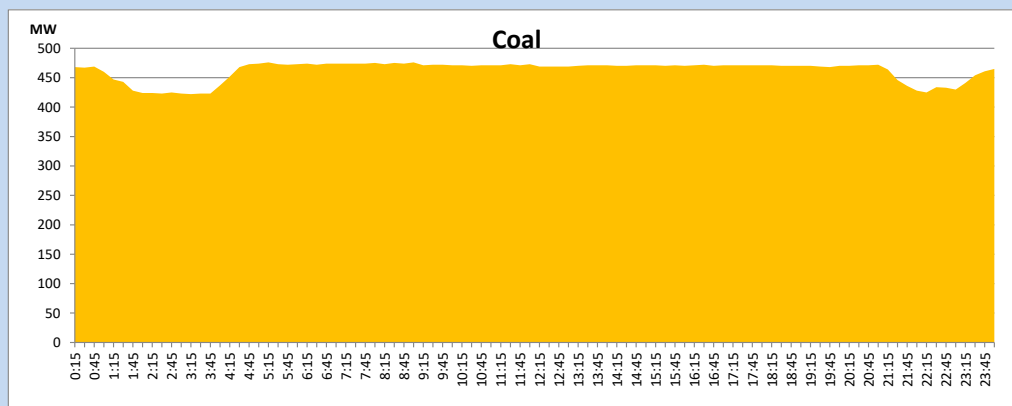
September 18, 2023



Solar and wind data is based on Telemetered Power Stations only

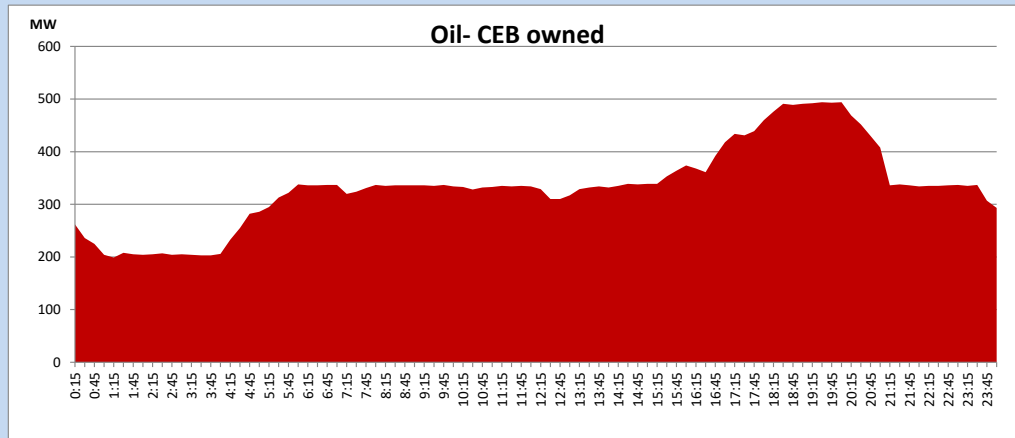
Coal Generation during

September 18, 2023



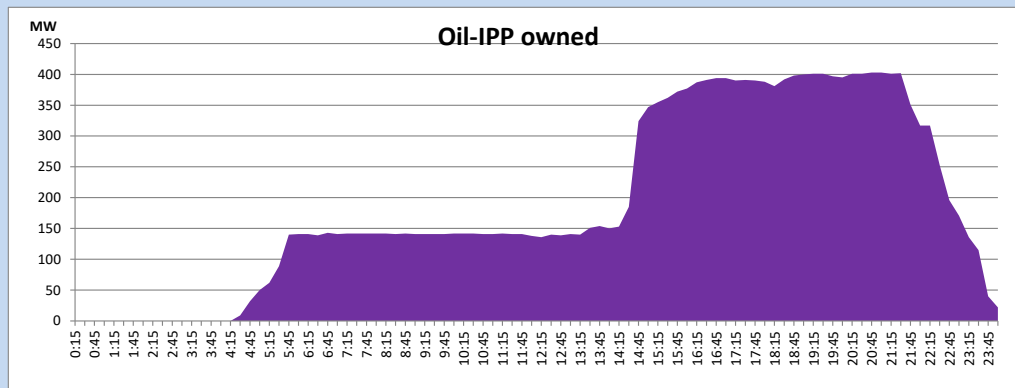
CEB Oil Plant Generation during

September 18, 2023



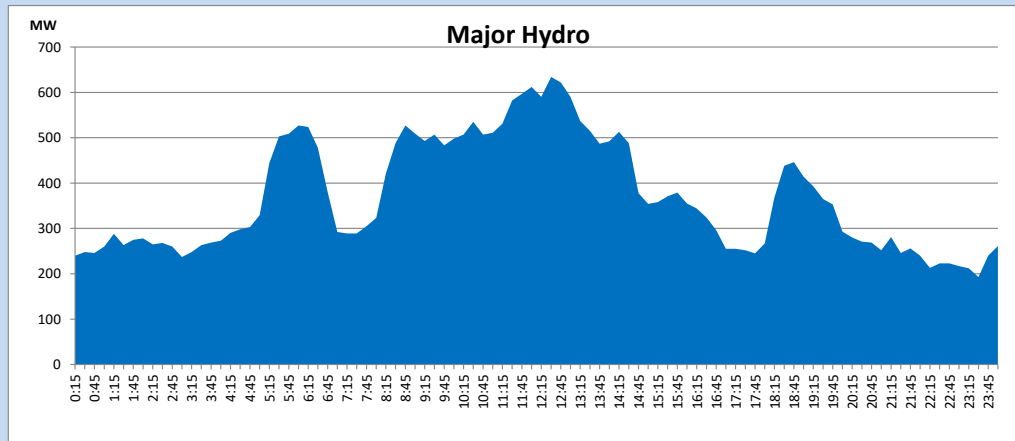
IPP Oil Plant Generation during

September 18, 2023



Major Hydro Generation during

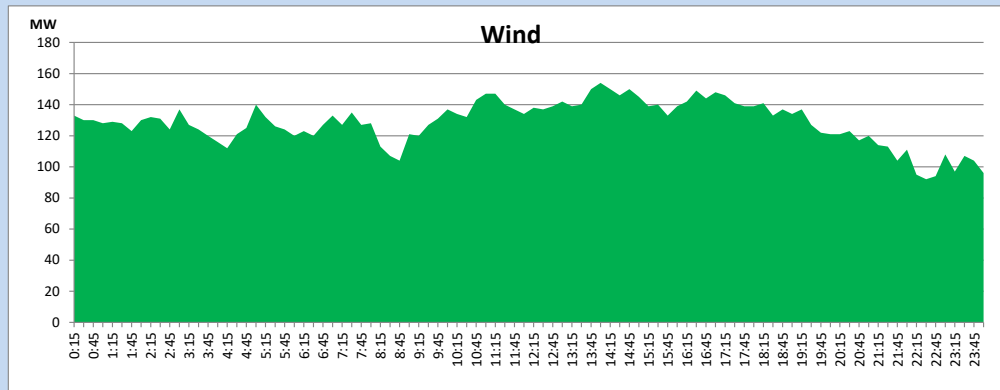
September 18, 2023



Wind Generation during

September 18, 2023

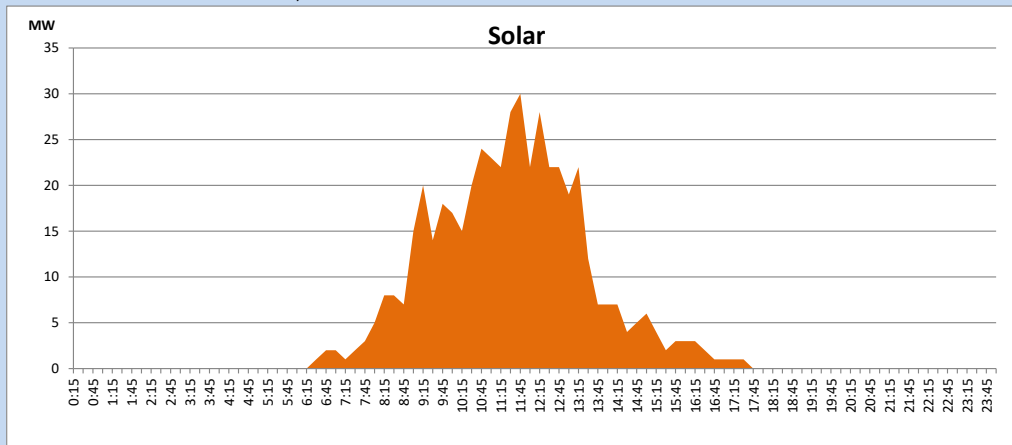
Based on Telemetered Power Stations only



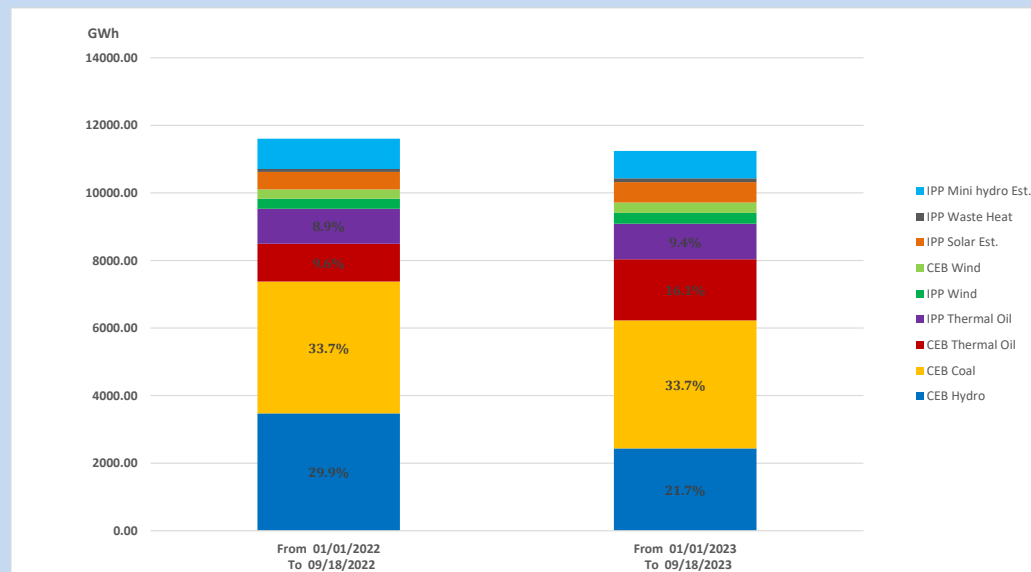
Solar Generation during

September 18, 2023

Based on Telemetered Power Stations only



15. Cumulative Dispatch Comparison with Last Year



Cumulative dispatch
From 01/01/2022 To 09/18/2022
From 01/01/2023 To 09/18/2023

11606 GWh
11242 GWh

The above figures are including contribution from roof top solar, non telemetered solar and mini hydro plants (figures have been adjusted based on the data from the CEB monthly review reports.)

Thermal Plant Fuel types

Table 08

Power Station	Primary Fuel
CEB Thermal	
Sapugaskanda 1	Heavy Fuel
Sapugaskanda 2	Heavy Fuel
Kelanitissa Small Gas Turbines	Auto Diesel
GT 7 - Kelanitissa	Auto Diesel
Kelanitissa CCY	Naphtha or Diesel
Lakvijaya 1	Coal
Lakvijaya 2	Coal
Lakvijaya 3	Coal
Uthuru Janani	Heavy Fuel
Barge CEB	Heavy Fuel
KCCPS -2	Auto Diesel

Power Station	Primary Fuel
Private Thermal	
West Coast	Auto Diesel / Heavy Fuel
ACE Matara	Heavy Fuel
ACE Embilipitiya	Heavy Fuel

Major Incidents reported during the day

September 18, 2023

Nil.