

Generation and Reservoirs Statistics

September 17, 2023



PUBLIC UTILITIES COMMISSION OF SRI LANKA

1. Daily Generation Mix in MWh

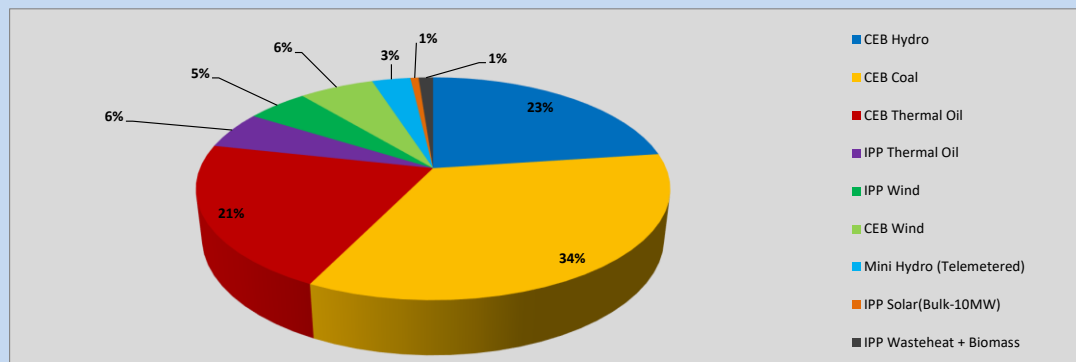


Table 01

	Generation (MWh)
CEB Hydro	7,495
CEB Coal	11,271
CEB Thermal Oil	6,952
IPP Thermal Oil	1,789
IPP Wind	1,641
CEB Wind	1,997
Mini Hydro (Telemetered)	1,028
IPP Solar (Bulk)	219
IPP Waste heat + Biomass	388
Total Generation (Excluding estimated figures)	32,780
* Estimated unserved energy	0
* Estimated Mini Hydro (Non telemetered)	2612
* Estimated IPP Solar PV (Bulk 1-10MW)	304
* Estimated Solar Roof Top PV	1660
Total Generation (Including estimated figures)	37,356

* Estimated figures of CEB generation report

Table 02

	Installed Capacity (MW)
CEB Hydro	1409
CEB Coal	810
CEB Thermal Oil	781
IPP Thermal Oil (West Coast, ACE Matara and ACE Embilipitiya)	387
IPP Wind	148
CEB Wind	100
Mini Hydro	416
IPP Waste heat + Biomass	50
IPP Solar	130
Rooftop Solar* (Ordinary)	267
Rooftop Solar* (LT Bulk)	256
Rooftop Solar* (HT Bulk)	61

Data Source - Monthly Review Report [May-2023]

2. Cumulative Dispatch

Following data excludes the contribution from roof top solar, non telemetered solar and mini hydro plants

Table 03 - Current Month

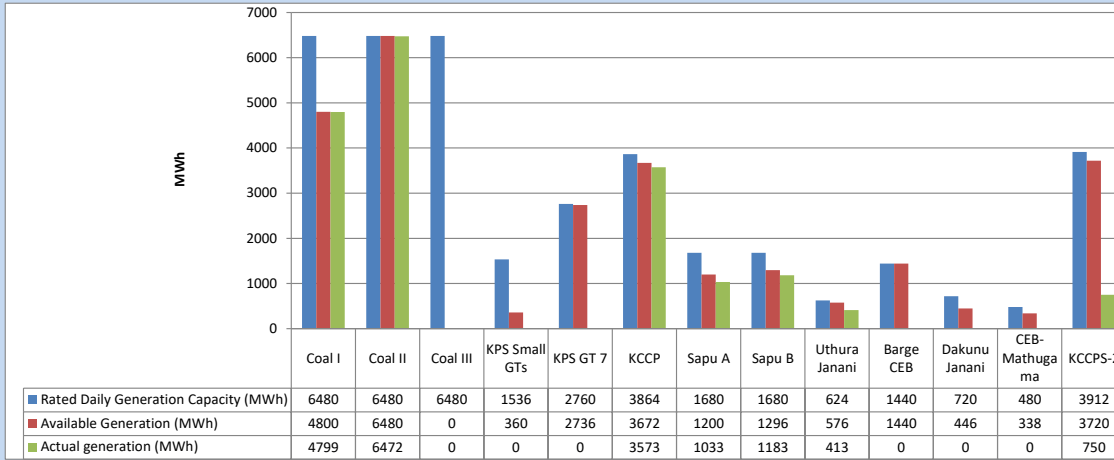
Category	Dispatch (GWh)	
CEB Hydro	140	22.23%
CEB Coal	199	31.72%
CEB Thermal Oil	119	19.00%
IPP Thermal	59	9.37%
SPP Wind	39	6.17%
CEB Wind	37	5.87%
Mini Hydro (Telemetered)	25	3.93%
IPP Solar(Bulk-10MW)	4	0.71%
IPP Waste heat + BMP	6	1.01%
Total	628	

Table 04 - Current Year

Category	Dispatch (GWh)	
CEB Hydro	2,439	24.17%
CEB Coal	3,784	37.51%
CEB Thermal Oil	1,804	17.89%
IPP Thermal	1,049	10.40%
SPP Wind	299	2.96%
CEB Wind	306	3.03%
Mini Hydro (Telemetered)	235	2.33%
IPP Solar(Bulk-10MW)	79	0.78%
IPP Waste heat	94	0.93%
Total	10,088	

3. CEB owned Thermal Plant Dispatch

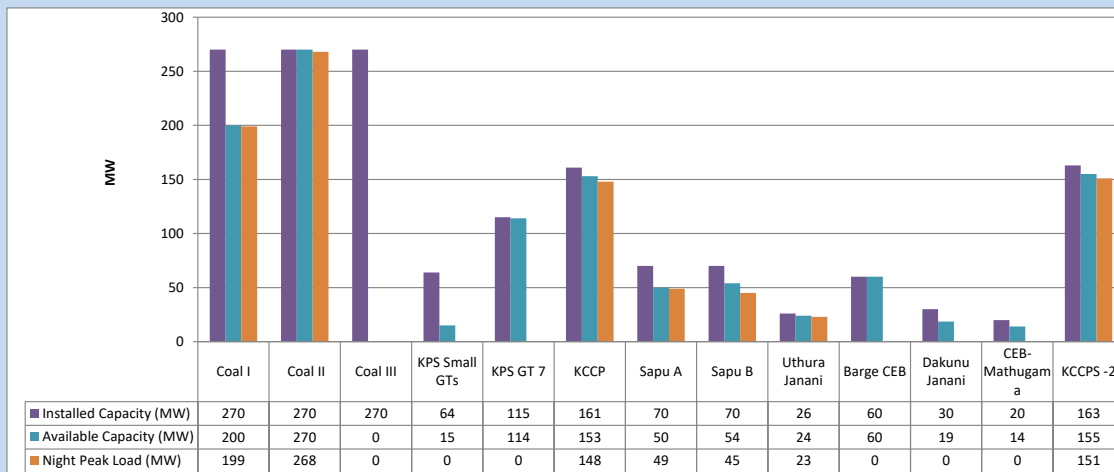
September 17, 2023



Available Generation is estimated based on plant availability at 6.00am on

September 18, 2023

4. CEB owned Thermal Plant Loading at the Night Peak

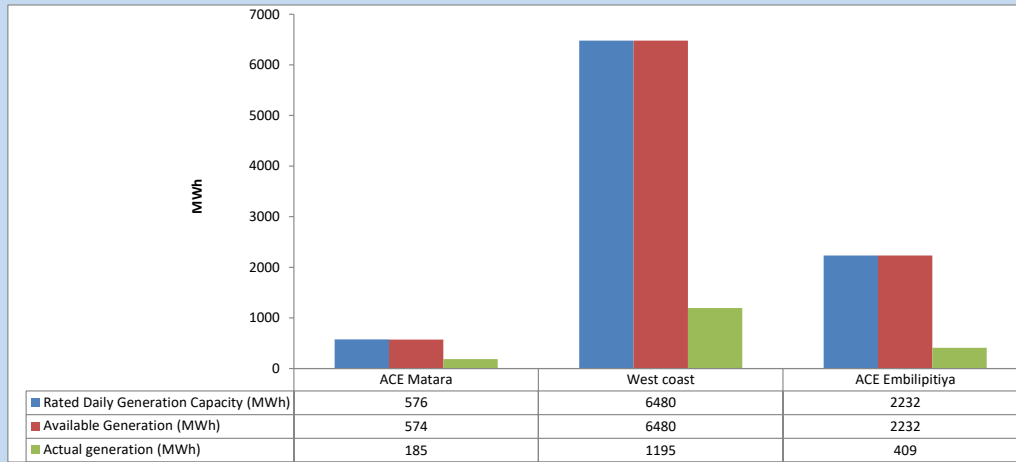


Plant availability is recorded at 6.00 am on

September 18, 2023

5. IPP owned Thermal Plant Dispatch

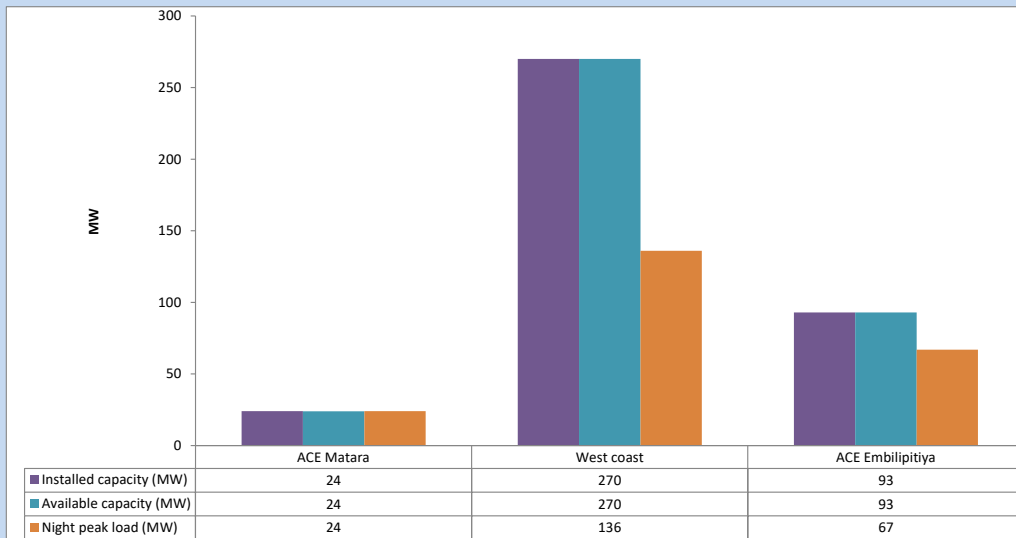
September 17, 2023



Available Generation is estimated based on plant availability at 6.00am on

September 18, 2023

6. IPP owned Thermal Plant Loading at the Night Peak

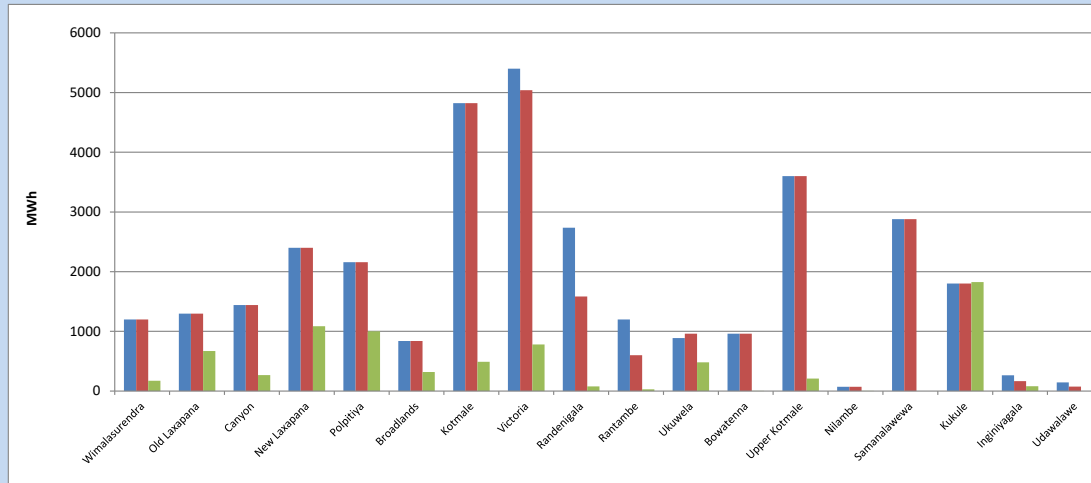


Plant availability is recorded at 6.00 am on

September 18, 2023

7. Major Hydro Plant Dispatch

September 17, 2023

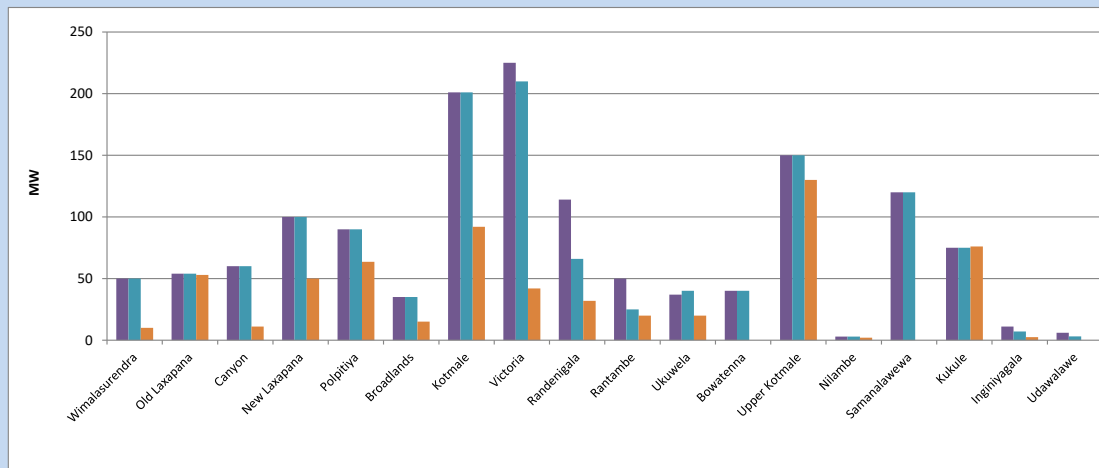


Available Generation is estimated based on plant availability at 6.00am on September 18, 2023
Broadlands power plant is operating in the Commissioning Stage

September 18, 2023

8. Major Hydro Plant Loading at Night Peak

September 17, 2023



Plant availability is recorded at 6.00 am on September 18, 2023
Broadlands power plant is operating in the Commissioning Stage

September 18, 2023

9. Summary of Major Plant performance

Table 05

Plant	Installed Capacity (MW)	Plant Availability (MW)	Night peak Load (MW)	Plant Dispatch (MWh)
Wimalasurendra	50	50	10	172
Old Laxapana	54	54	53	670
Canyon	60	60	11	267
New Laxapana	100	100	50	1,087
Polpitiya	90	90	64	1,000
Broadlands	35	35	15	318
Kotmale	201	201	92	490
Victoria	225	210	42	782
Randenigala	114	66	32	79
Rantambe	50	25	20	29
Ukuwela	37	40	20	480
Bowatenna	40	40	0	2
Upper Kotmale	150	150	130	209
Nilambe	3	3	2	3
Samanalawewa	120	120	0	0
Kukule	75	75	76	1,826
Inginiyagala	11	7	3	81
Udawalawe	6	3	0	0
Puttalam Coal I	270	200	199	4,799
Puttalam Coal II	270	270	268	6,472
Puttalam Coal III	270	0	0	0
KPS Small GTs	64	15	0	0
KPS GT 7	115	114	0	0
KCCP	161	153	148	3,573
Sapugaskanda A	70	50	49	1,033
Sapugaskanda B	70	54	45	1,183
Uthura Janani	26	24	23	413
Barge CEB	60	60	0	0
CEB-Hambantota	30	19	0	0
CEB-Mathugama	20	14	0	0
ACE Matara	24	24	24	185
Asia Power	50	0	0	0
KCCPS -2	163	155	151	750
West Coast	270	270	136	1,195
Nothern Power	36	0	0	0
ACE Embilipitiya	93	93	67	409
Total	3,483	2,844	1,894	32,780

Plant availability is the availability recorded at 6 am on

September 18, 2023

10. Contribution to the Night Peak in MW

September 17, 2023

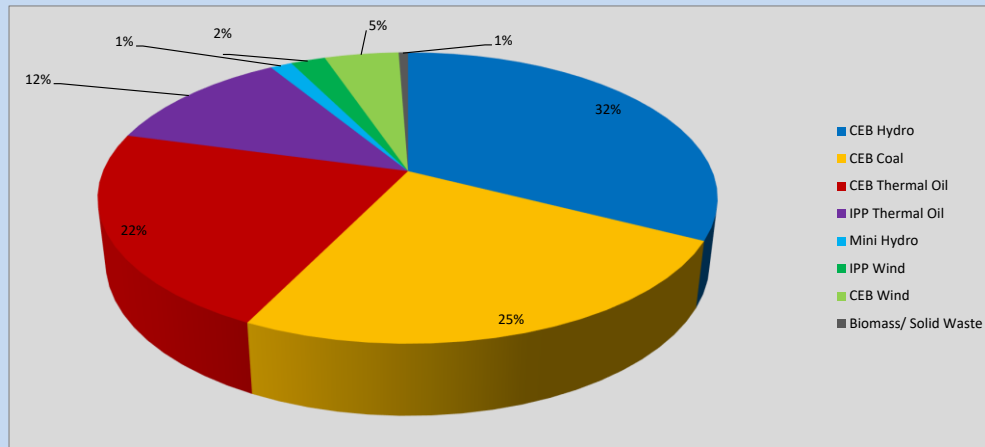


Table 06

CEB Hydro	614	MW
CEB Coal	467	MW
CEB Thermal Oil	416	MW
IPP Thermal Oil	227	MW
Mini Hydro (Telemetered)	26	MW
IPP Wind	40.9	MW
CEB Wind	87.4	MW
Biomass/ Solid Waste	11	MW

Recorded Peak Demand Data

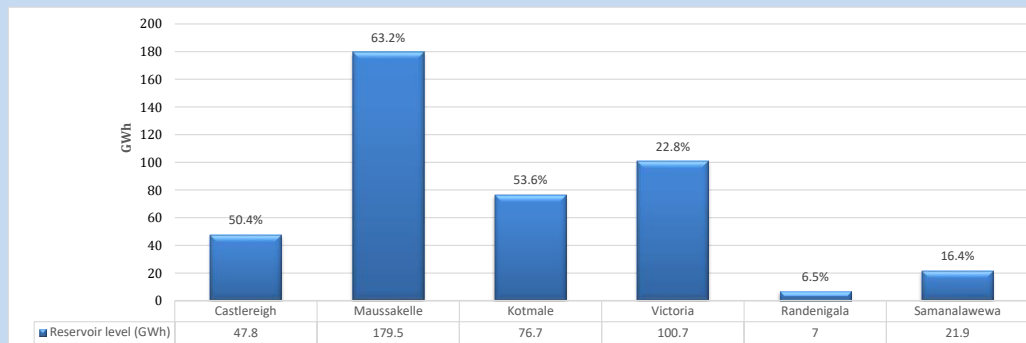
Table 07

Night Peak*	1,889	MW
Day Peak Maximum Demand	1,384	MW
Day Peak Minimum Demand	1,088	MW
Off Peak Minimum Demand	1,184	MW

Above figures are excluding contribution from roof top solar, non telemetered solar and mini hydro plants

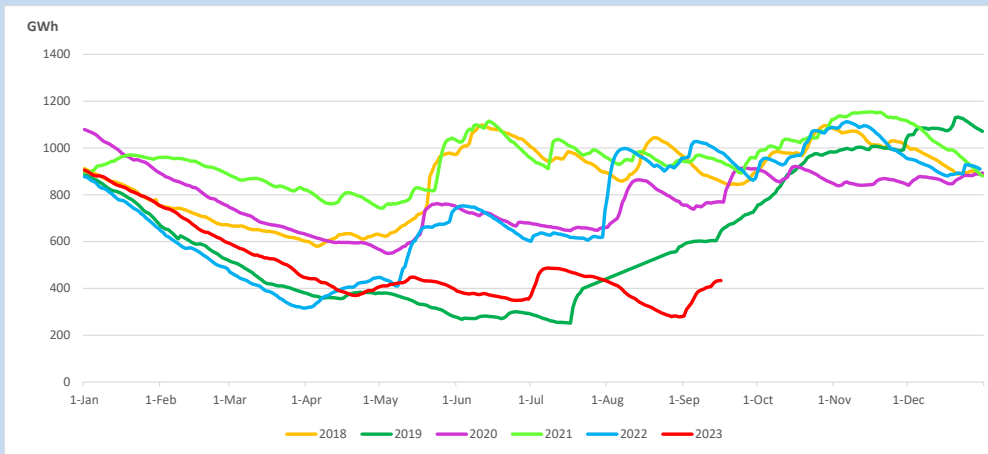
Reservoir Levels -

as at 06.00 Hr on September 18, 2023

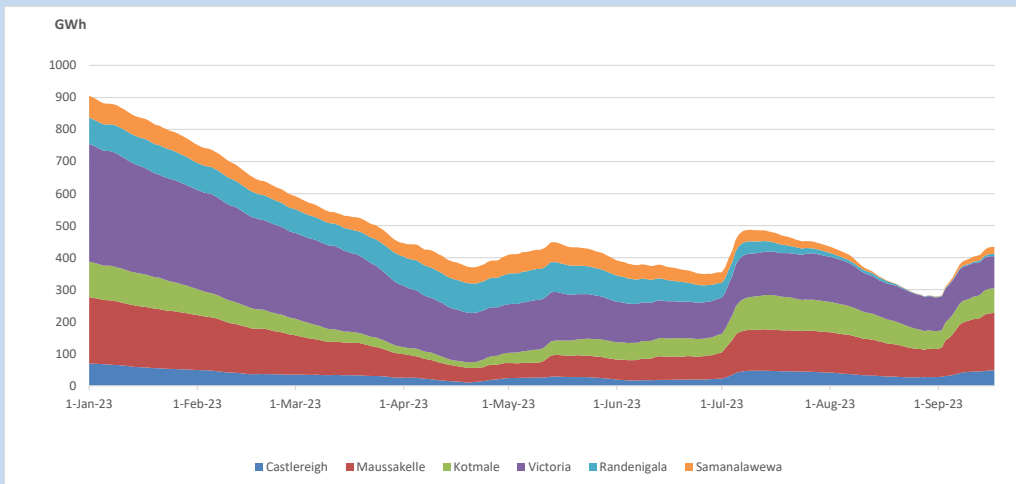


Total Reservoir Level 433.6 GWh
 % of Total capacity 36.0%

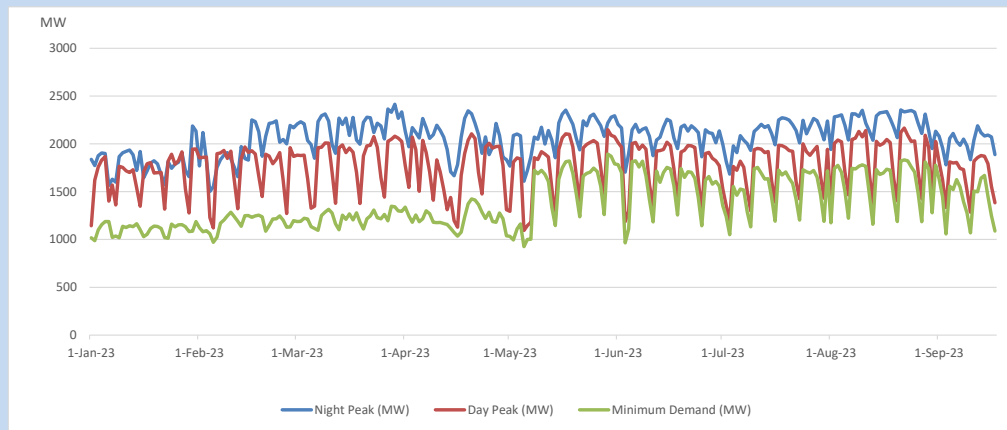
11. Comparison of Total Reservoir Storage Levels with Past Years



12. Variation of Major Hydro Reservoir Levels in the current year (GWh)



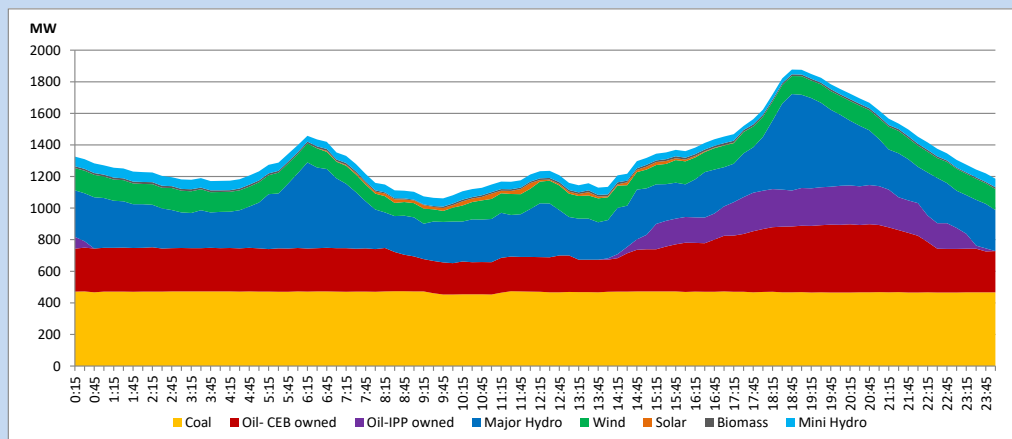
13. Variation of Demand during the current year



The above figures are excluding contribution from roof top solar, non telemetered solar and mini hydro plants

14. Daily Load Curve

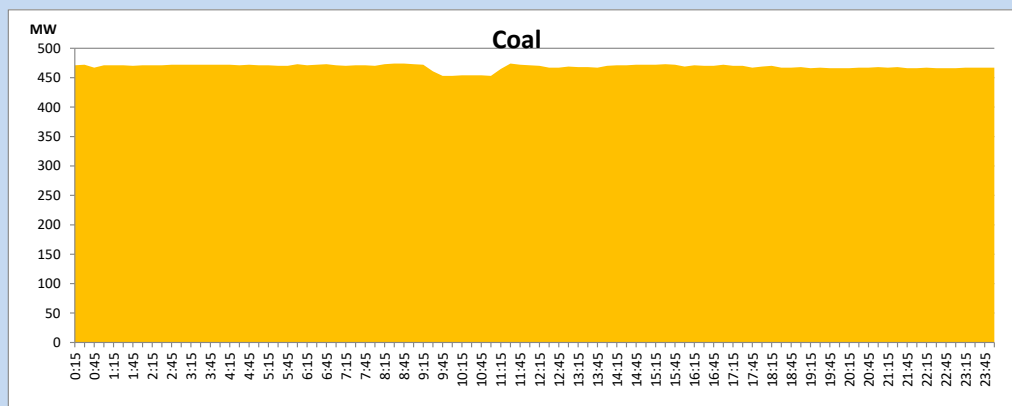
September 17, 2023



Solar and wind data is based on Telemetered Power Stations only

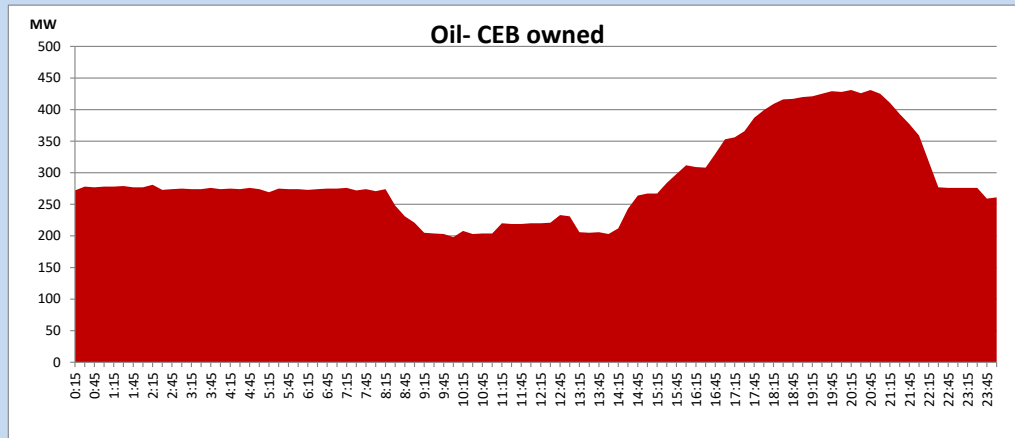
Coal Generation during

September 17, 2023



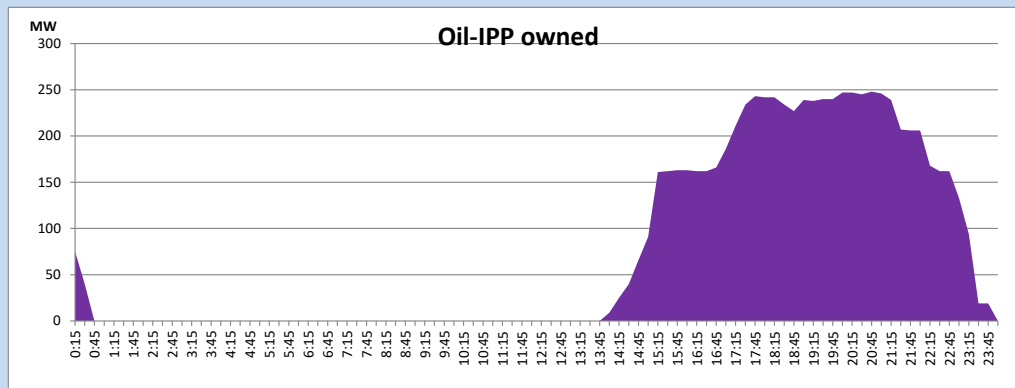
CEB Oil Plant Generation during

September 17, 2023



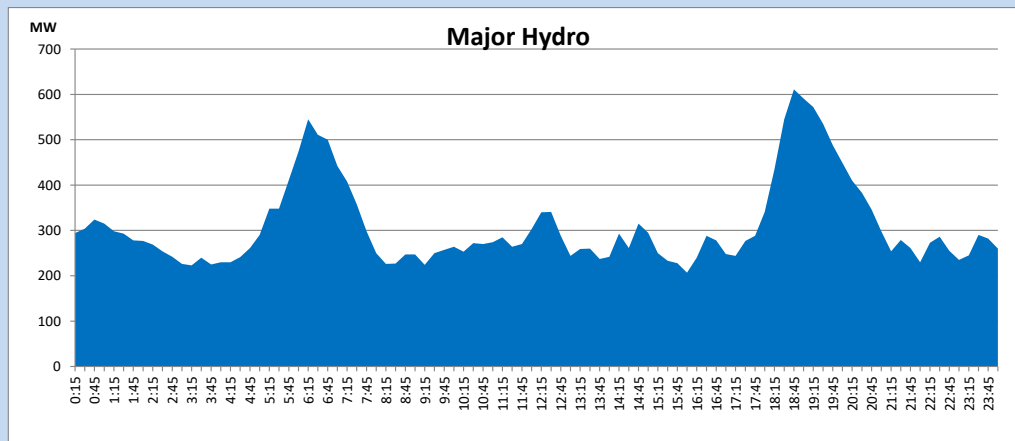
IPP Oil Plant Generation during

September 17, 2023



Major Hydro Generation during

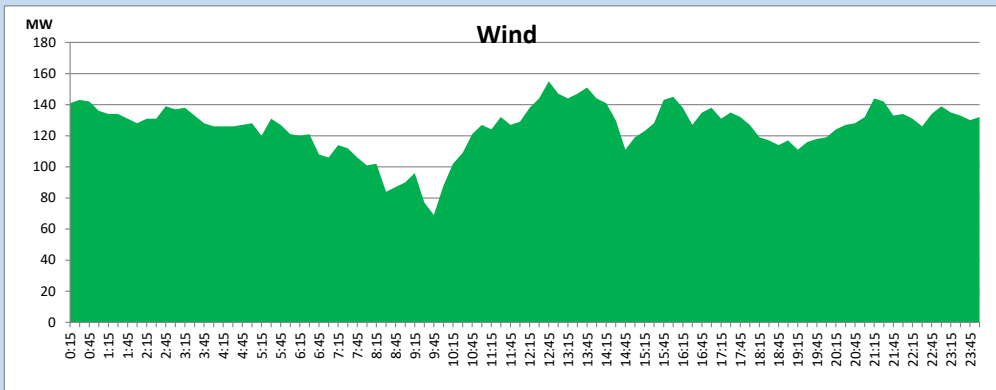
September 17, 2023



Wind Generation during

September 17, 2023

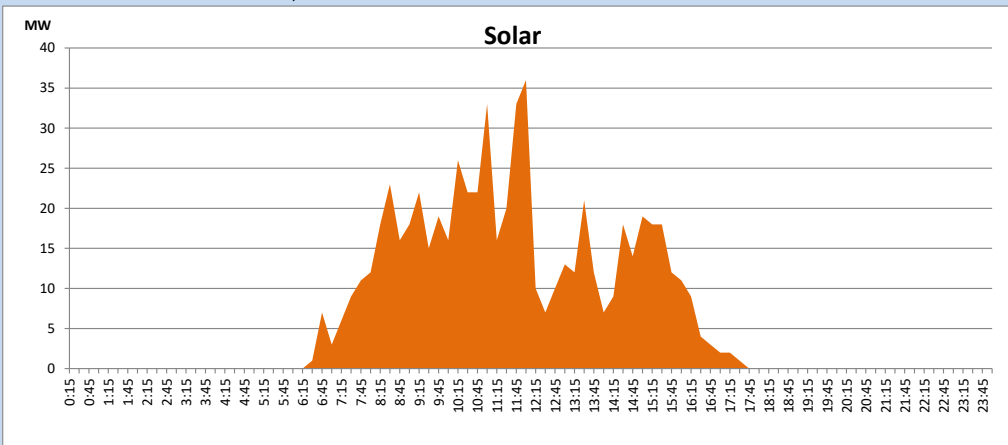
Based on Telemetered Power Stations only



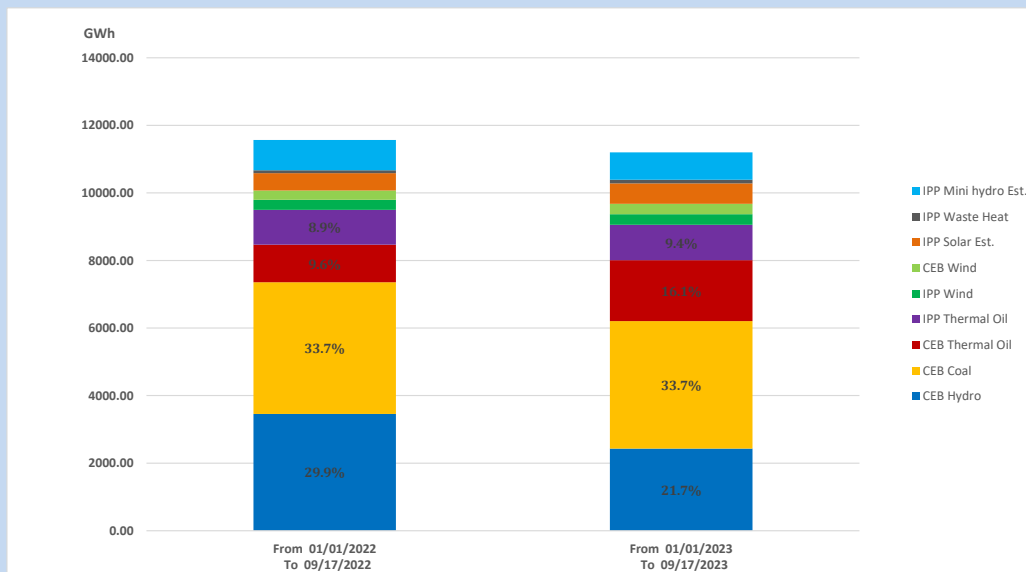
Solar Generation during

September 17, 2023

Based on Telemetered Power Stations only



15. Cumulative Dispatch Comparison with Last Year



Cumulative dispatch
 From 01/01/2022 To 09/17/2022
 From 01/01/2023 To 09/17/2023

11565 GWh
 11200 GWh

The above figures are including contribution from roof top solar, non telemetered solar and mini hydro plants (figures have been adjusted based on the data from the CEB monthly review reports.)

Thermal Plant Fuel types

Table 08

Power Station	Primary Fuel
CEB Thermal	
Sapugaskanda 1	Heavy Fuel
Sapugaskanda 2	Heavy Fuel
Kelanitissa Small Gas Turbines	Auto Diesel
GT 7 - Kelanitissa	Auto Diesel
Kelanitissa CCY	Naphtha or Diesel
Lakvijaya 1	Coal
Lakvijaya 2	Coal
Lakvijaya 3	Coal
Uthuru Janani	Heavy Fuel
Barge CEB	Heavy Fuel
KCCPS -2	Auto Diesel

Power Station	Primary Fuel
Private Thermal	
West Coast	Auto Diesel / Heavy Fuel
ACE Matara	Heavy Fuel
ACE Embilipitiya	Heavy Fuel

Major Incidents reported during the day

September 17, 2023

- 1) Kothmale – Victoria 220kV cct 01 tripped from both ends at 11:29hrs due to the operation of differential protection. The cct was normalized at 12:00hrs.
- 2) Barge – Kelanitissa 220kV cable which tripped on 16.09.23 was normalized at 18:41hrs.
- 3) New Laxapana unit 01 which was released for the routine maintenance work, became unavailable for the night peak due to a governor fault. The unit resumed generation at 01:13hrs (18.09.23).