

Generation and Reservoirs Statistics

September 14, 2023



PUBLIC UTILITIES COMMISSION OF SRI LANKA

1. Daily Generation Mix in MWh

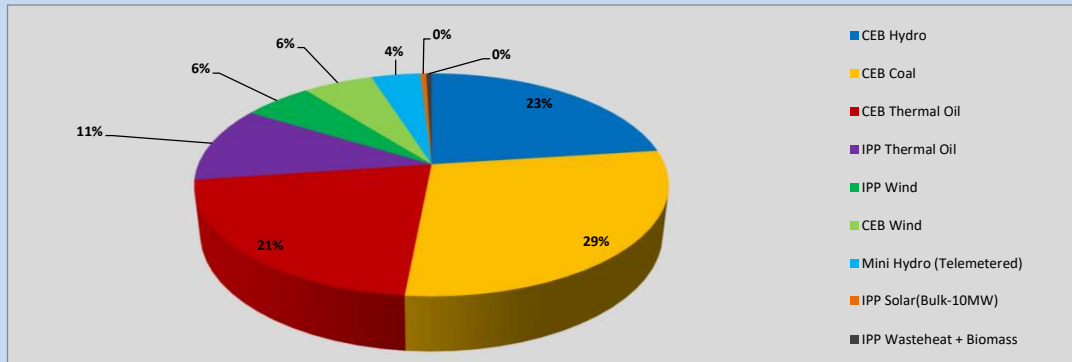


Table 01

	Generation (MWh)
CEB Hydro	9,058
CEB Coal	11,266
CEB Thermal Oil	8,391
IPP Thermal Oil	4,352
IPP Wind	2,211
CEB Wind	2,243
Mini Hydro (Telemetered)	1,582
IPP Solar (Bulk)	186
IPP Waste heat + Biomass	176
Total Generation (Excluding estimated figures)	39,465
* Estimated unserved energy	0
* Estimated Mini Hydro (Non telemetered)	2058
* Estimated IPP Solar PV (Bulk 1-10MW)	304
* Estimated Solar Roof Top PV	1660
Total Generation (Including estimated figures)	43,487

* Estimated figures of CEB generation report

Table 02

	Installed Capacity (MW)
CEB Hydro	1409
CEB Coal	810
CEB Thermal Oil	781
IPP Thermal Oil (West Coast, ACE Matara and ACE Embilipitiya)	387
IPP Wind	148
CEB Wind	100
Mini Hydro	416
IPP Waste heat + Biomass	50
IPP Solar	130
Rooftop Solar* (Ordinary)	267
Rooftop Solar* (LT Bulk)	256
Rooftop Solar* (HT Bulk)	61

Data Source - Monthly Review Report [May-2023]

2. Cumulative Dispatch

Following data excludes the contribution from roof top solar, non telemetered solar and mini hydro plants

Table 03 - Current Month

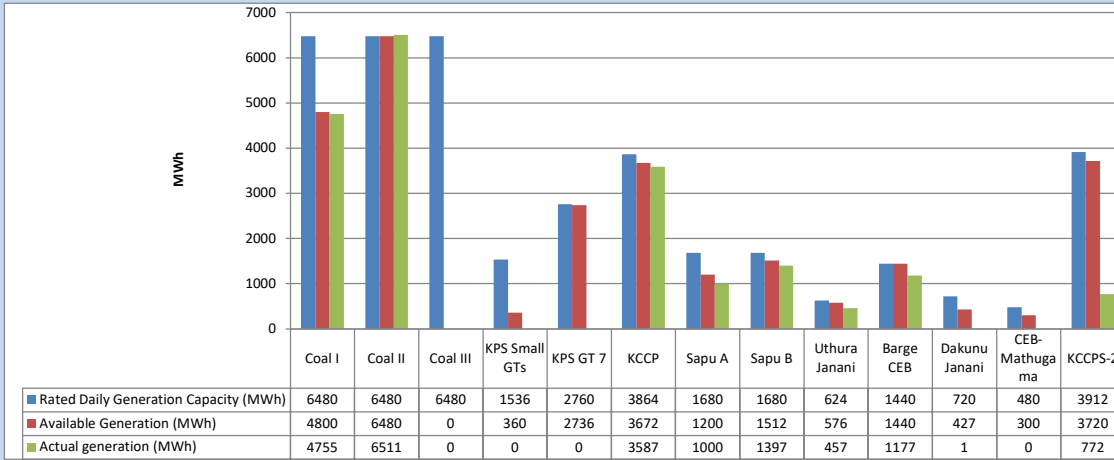
Category	Dispatch (GWh)	
CEB Hydro	115	22.01%
CEB Coal	165	31.76%
CEB Thermal Oil	97	18.62%
IPP Thermal	50	9.69%
SPP Wind	34	6.44%
CEB Wind	30	5.84%
Mini Hydro (Telemetered)	21	3.98%
IPP Solar(Bulk-10MW)	4	0.69%
IPP Waste heat + BMP	5	0.97%
Total	521	

Table 04 - Current Year

Category	Dispatch (GWh)	
CEB Hydro	2,414	24.18%
CEB Coal	3,750	37.57%
CEB Thermal Oil	1,782	17.86%
IPP Thermal	1,041	10.42%
SPP Wind	294	2.94%
CEB Wind	300	3.00%
Mini Hydro (Telemetered)	231	2.31%
IPP Solar(Bulk-10MW)	78	0.78%
IPP Waste heat	92	0.93%
Total	9,981	

3. CEB owned Thermal Plant Dispatch

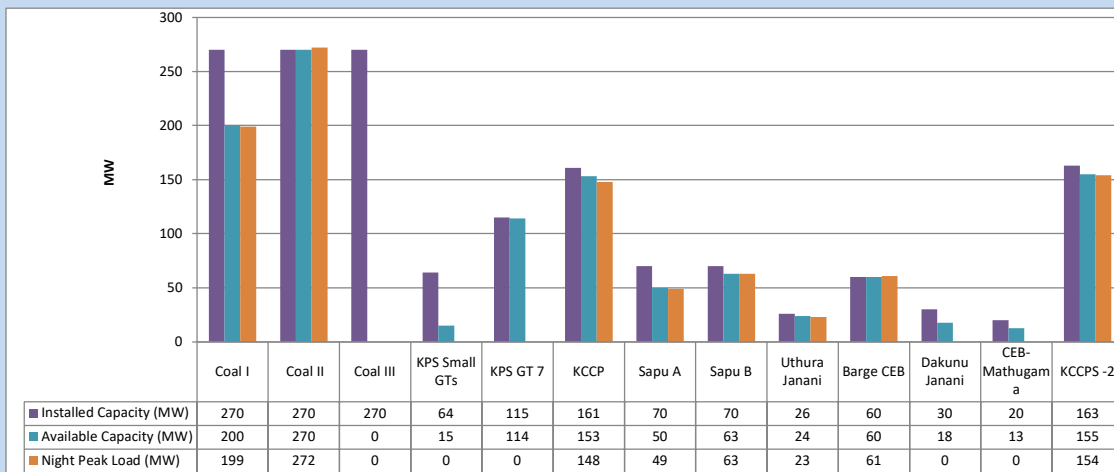
September 14, 2023



Available Generation is estimated based on plant availability at 6.00am on

September 15, 2023

4. CEB owned Thermal Plant Loading at the Night Peak

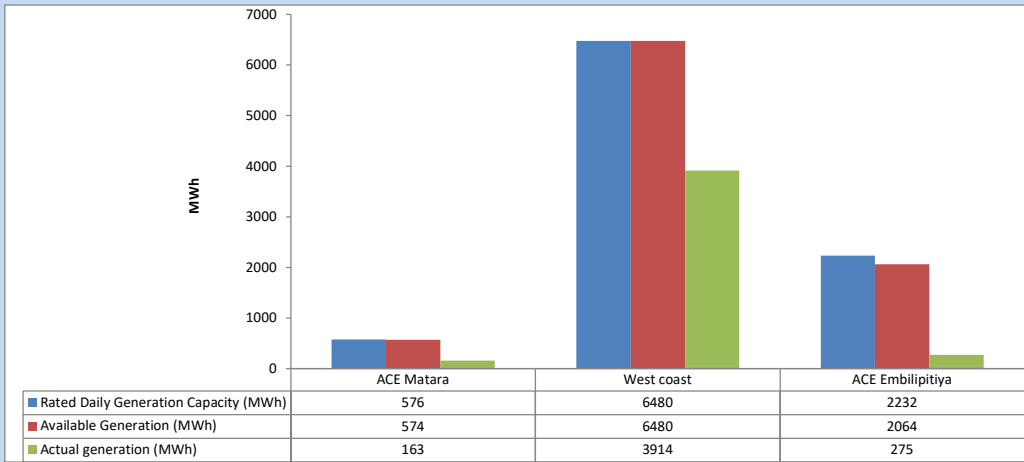


Plant availability is recorded at 6.00 am on

September 15, 2023

5. IPP owned Thermal Plant Dispatch

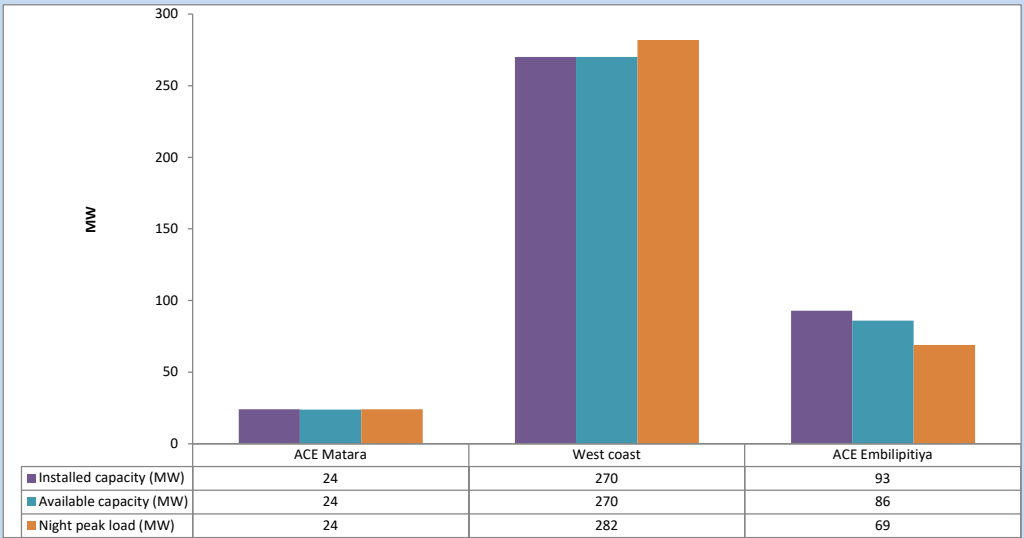
September 14, 2023



Available Generation is estimated based on plant availability at 6.00am on

September 15, 2023

6. IPP owned Thermal Plant Loading at the Night Peak

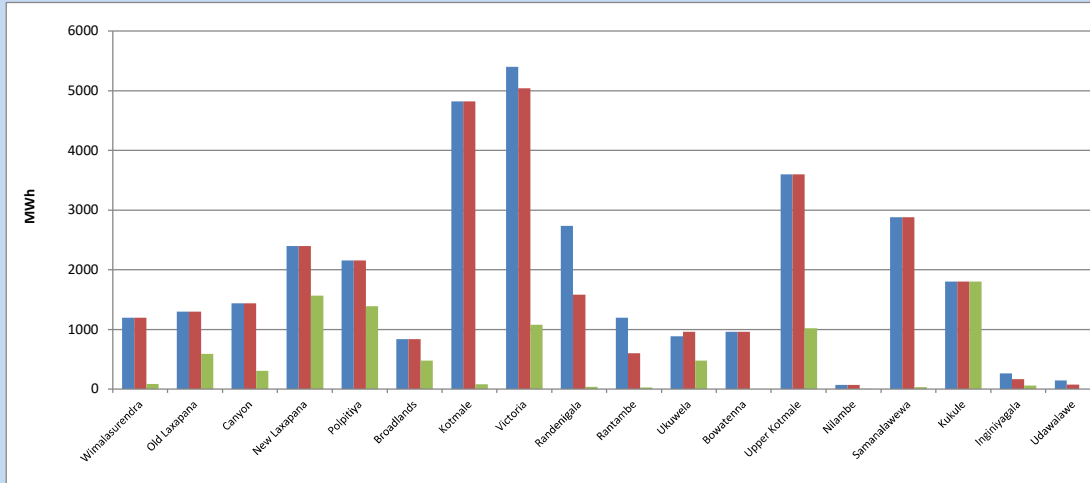


Plant availability is recorded at 6.00 am on

September 15, 2023

7. Major Hydro Plant Dispatch

September 14, 2023

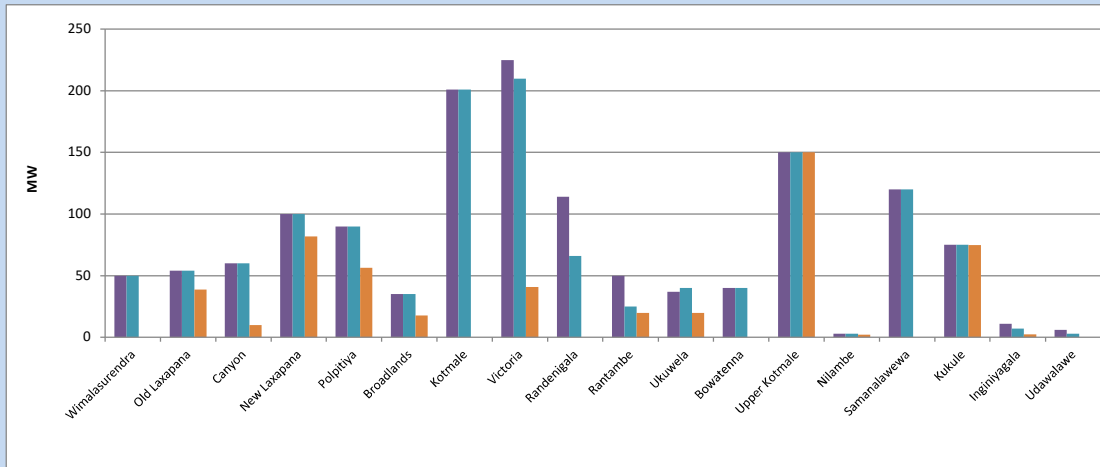


Available Generation is estimated based on plant availability at 6.00am on September 15, 2023
Broadlands power plant is operating in the Commissioning Stage

September 15, 2023

8. Major Hydro Plant Loading at Night Peak

September 14, 2023



Plant availability is recorded at 6.00 am on September 15, 2023
Broadlands power plant is operating in the Commissioning Stage

September 15, 2023

9. Summary of Major Plant performance

Table 05

Plant	Installed Capacity	Plant Availability	Night peak Load	Plant Dispatch
	(MW)	(MW)	(MW)	(MWh)
Wimalasurendra	50	50	0	87
Old Laxapana Canyon	54	54	39	591
New Laxapana	60	60	10	307
Polpitiya	100	100	82	1,567
Broadlands	90	90	57	1,390
Kotmale	35	35	18	481
Victoria	201	201	0	80
Randenigala	225	210	41	1,081
Rantambe	114	66	0	37
Ukuwela	50	25	20	30
Bowatenna	37	40	20	479
Upper Kotmale	40	40	0	2
Nilambe	150	150	150	1,022
Samanalawewa	3	3	2	7
Kukule	120	120	0	31
Inginiyagala	75	75	75	1,803
Udawalawe	11	7	3	63
Puttalam Coal I	6	3	0	0
Puttalam Coal II	270	200	199	4,755
Puttalam Coal III	270	270	272	6,511
KPS Small GTs	270	0	0	0
KPS GT 7	64	15	0	0
KCCP	115	114	0	0
Sapugaskanda A	161	153	148	3,587
Sapugaskanda B	70	50	49	1,000
Uthura Janani	70	63	63	1,397
Barge CEB	26	24	23	457
CEB-Hambantota	60	60	61	1,177
CEB-Mathugama	30	18	0	1
ACE Matara	20	13	0	0
Asia Power	24	24	24	163
KCCPS -2	50	0	0	0
West Coast	163	155	154	772
Nothern Power	270	270	282	3,914
ACE Embilipitiya	36	0	0	0
Total	93	86	69	275
	3,483	2,843	2,089	39,465

Plant availability is the availability recorded at 6 am on

September 15, 2023

10. Contribution to the Night Peak in MW

September 14, 2023

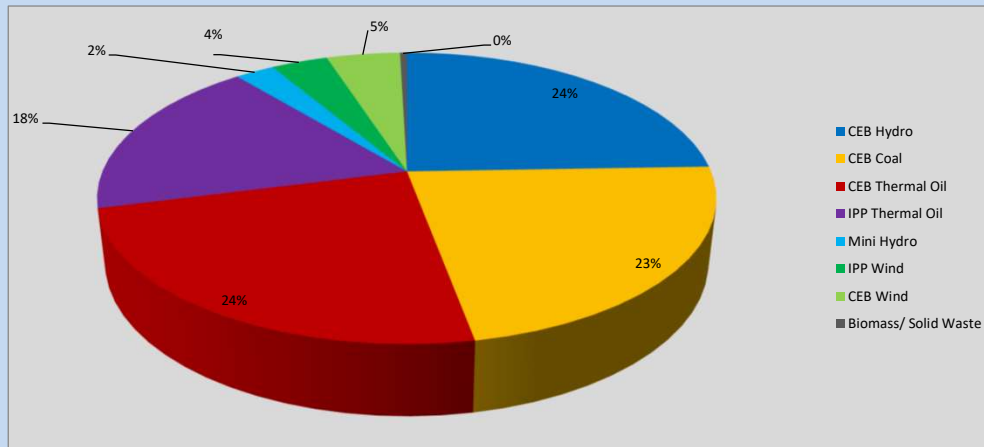


Table 06

CEB Hydro	509	MW
CEB Coal	471	MW
CEB Thermal Oil	498	MW
IPP Thermal Oil	375	MW
Mini Hydro (Telemetered)	51	MW
IPP Wind	73.9	MW
CEB Wind	95.6	MW
Biomass/ Solid Waste	9	MW

Recorded Peak Demand Data

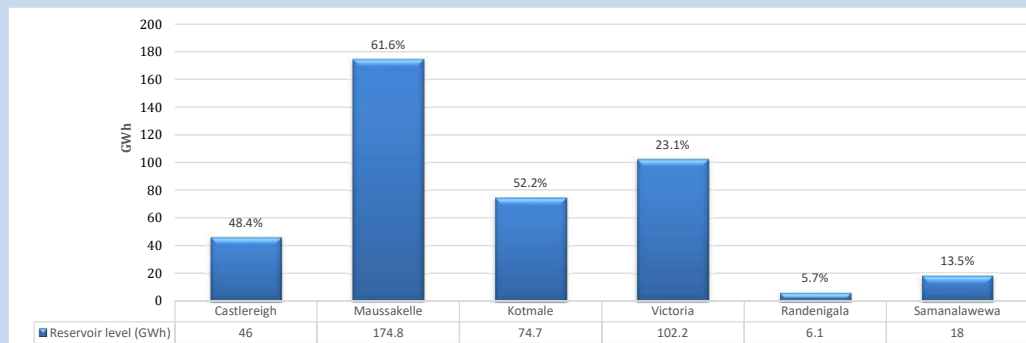
Table 07

Night Peak*	2,083	MW
Day Peak Maximum Demand	1,871	MW
Day Peak Minimum Demand	1,671	MW
Off Peak Minimum Demand	1,171	MW

Above figures are excluding contribution from roof top solar, non telemetered solar and mini hydro plants

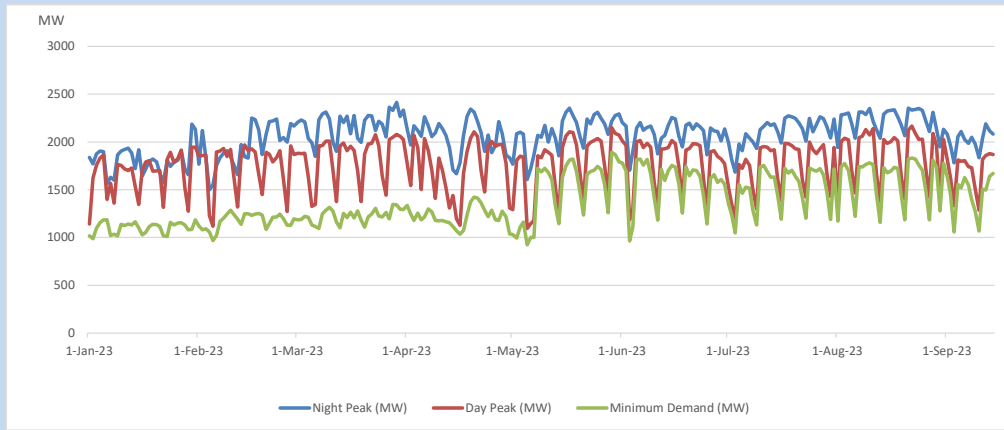
Reservoir Levels -

as at 06.00 Hr on September 15, 2023



Total Reservoir Level 421.8 GWh
% of Total capacity 35.0%

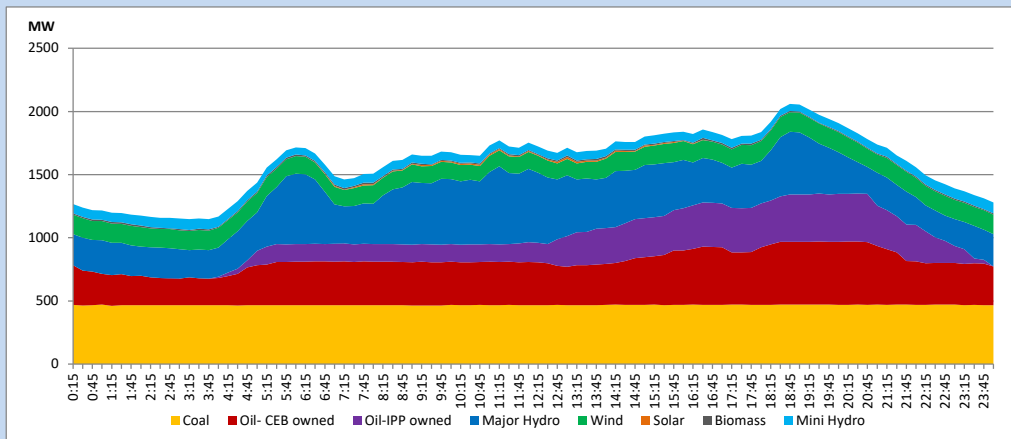
13. Variation of Demand during the current year



The above figures are excluding contribution from roof top solar, non telemetered solar and mini hydro plants

14. Daily Load Curve

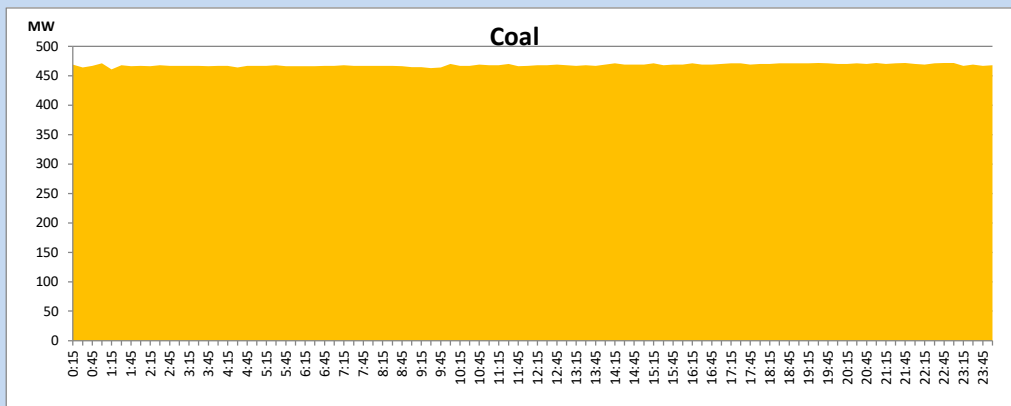
September 14, 2023



Solar and wind data is based on Telemetered Power Stations only

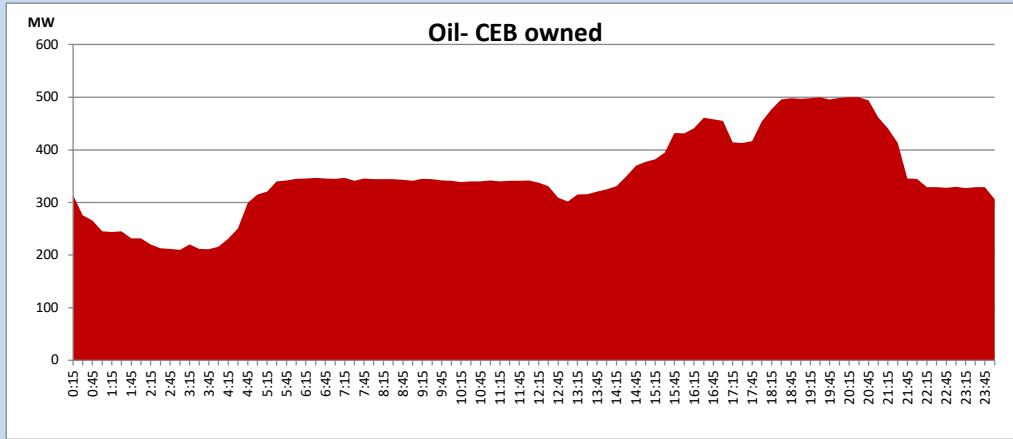
Coal Generation during

September 14, 2023



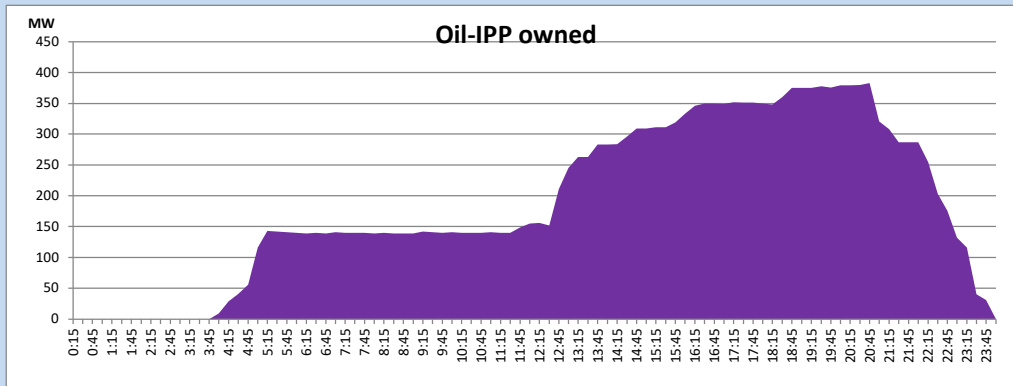
CEB Oil Plant Generation during

September 14, 2023



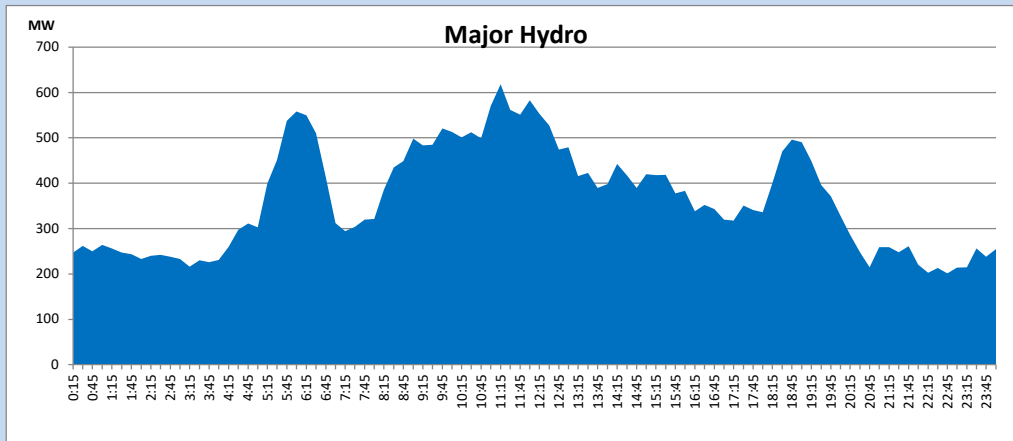
IPP Oil Plant Generation during

September 14, 2023



Major Hydro Generation during

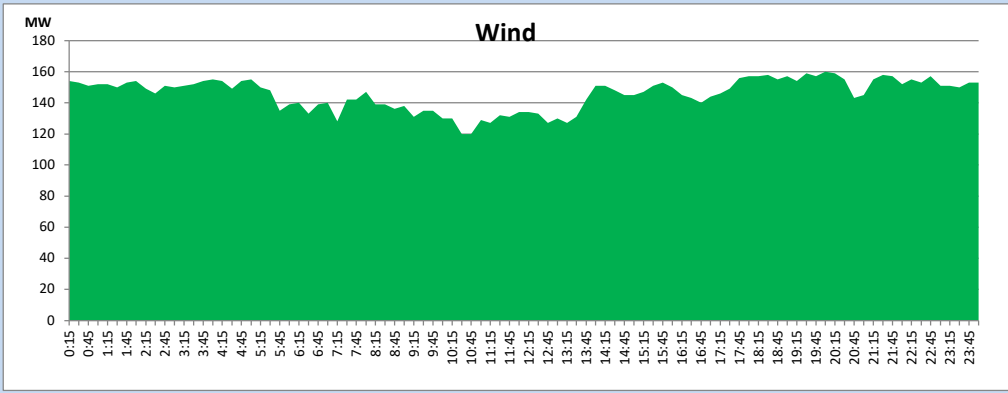
September 14, 2023



Wind Generation during

September 14, 2023

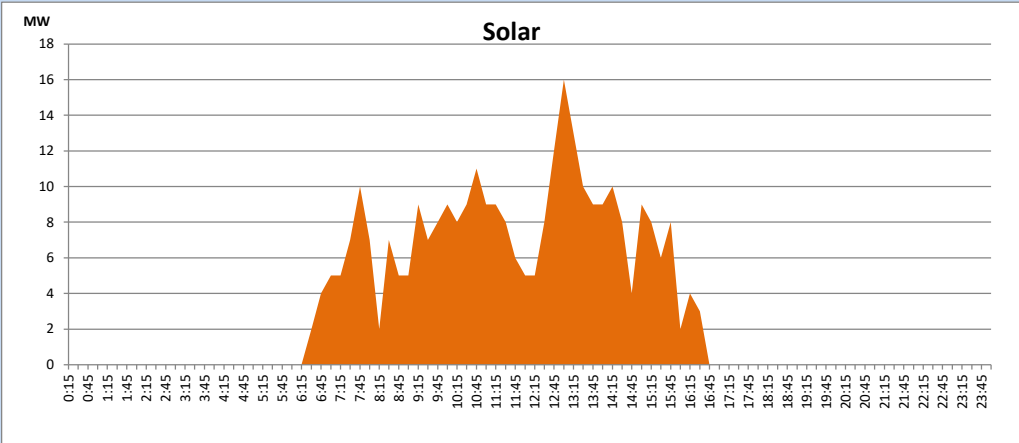
Based on Telemetered Power Stations only



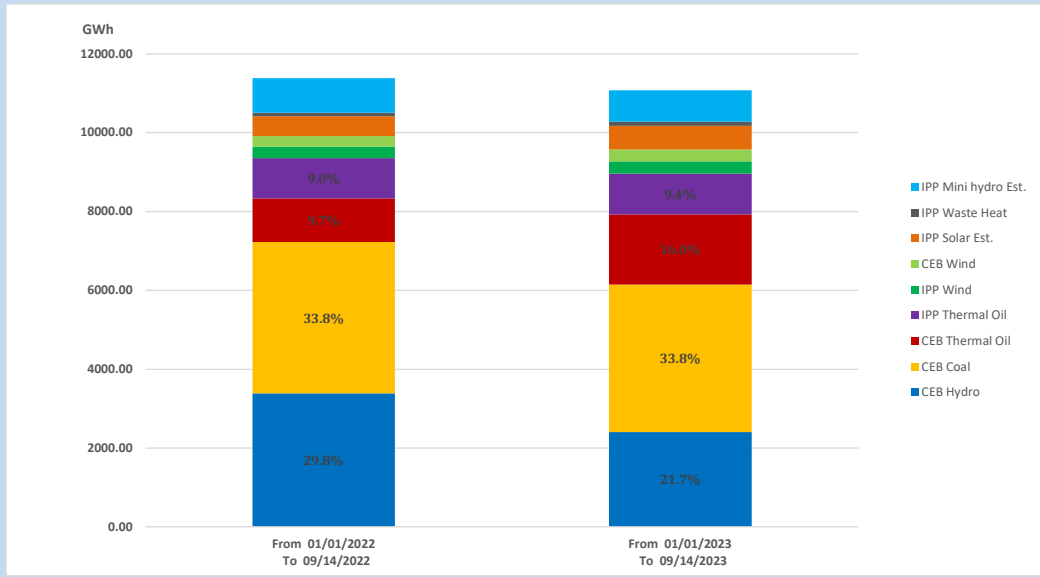
Solar Generation during

September 14, 2023

Based on Telemetered Power Stations only



15. Cumulative Dispatch Comparison with Last Year



Cumulative dispatch

From 01/01/2022 To 09/14/2022

11383 GWh

From 01/01/2023 To 09/13/2023

11080 GWh

The above figures are including contribution from roof top solar, non telemetered solar and mini hydro plants (figures have been adjusted based on the data from the CEB monthly review reports.)

Thermal Plant Fuel types

Table 08

Power Station	Primary Fuel
CEB Thermal	
Sapugaskanda 1	Heavy Fuel
Sapugaskanda 2	Heavy Fuel
Kelanitissa Small Gas Turbines	Auto Diesel
GT 7 - Kelanitissa	Auto Diesel
Kelanitissa CCY	Naphtha or Diesel
Lakvijaya 1	Coal
Lakvijaya 2	Coal
Lakvijaya 3	Coal
Uthuru Janani	Heavy Fuel
Barge CEB	Heavy Fuel
KCCPS -2	Auto Diesel

Power Station	Primary Fuel
Private Thermal	
West Coast	Auto Diesel / Heavy Fuel
ACE Matara	Heavy Fuel
ACE Embilipitiya	Heavy Fuel

Major Incidents reported during the day

September 14, 2023

- 1) Kukule pond Spilling started at 10:20hrs and continues to the present hour.