

Generation and Reservoirs Statistics

September 13, 2023



PUBLIC UTILITIES COMMISSION OF SRI LANKA

1. Daily Generation Mix in MWh

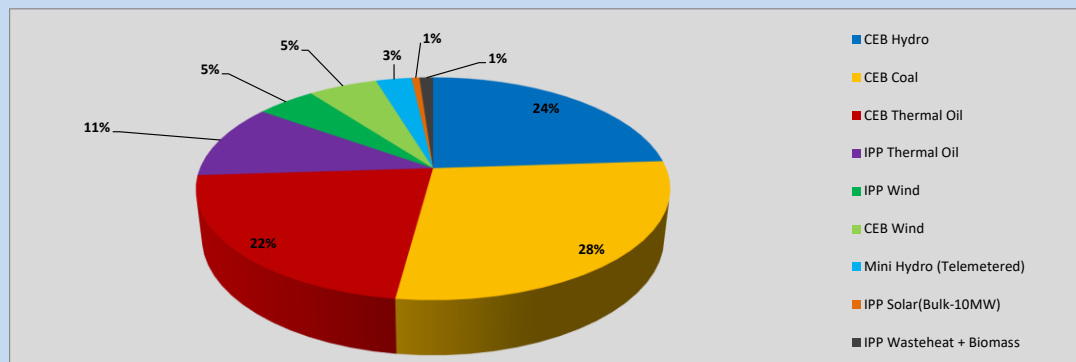


Table 01

	Generation (MWh)
CEB Hydro	9,518
CEB Coal	11,198
CEB Thermal Oil	8,693
IPP Thermal Oil	4,334
IPP Wind	1,917
CEB Wind	2,236
Mini Hydro (Telemetered)	1,160
IPP Solar (Bulk)	254
IPP Waste heat + Biomass	443
Total Generation (Excluding estimated figures)	39,753
* Estimated unserved energy	0
* Estimated Mini Hydro (Non telemetered)	2480
* Estimated IPP Solar PV (Bulk 1-10MW)	304
* Estimated Solar Roof Top PV	1660
Total Generation (Including estimated figures)	44,197

* Estimated figures of CEB generation report

Table 02

	Installed Capacity (MW)
CEB Hydro	1409
CEB Coal	810
CEB Thermal Oil	781
IPP Thermal Oil (West Coast, ACE Matara and ACE Embilipitiya)	387
IPP Wind	148
CEB Wind	100
Mini Hydro	416
IPP Waste heat + Biomass	50
IPP Solar	130
Rooftop Solar* (Ordinary)	267
Rooftop Solar* (LT Bulk)	256
Rooftop Solar* (HT Bulk)	61

Data Source - Monthly Review Report [May-2023]

2. Cumulative Dispatch

Following data excludes the contribution from roof top solar, non telemetered solar and mini hydro plants

Table 03 - Current Month

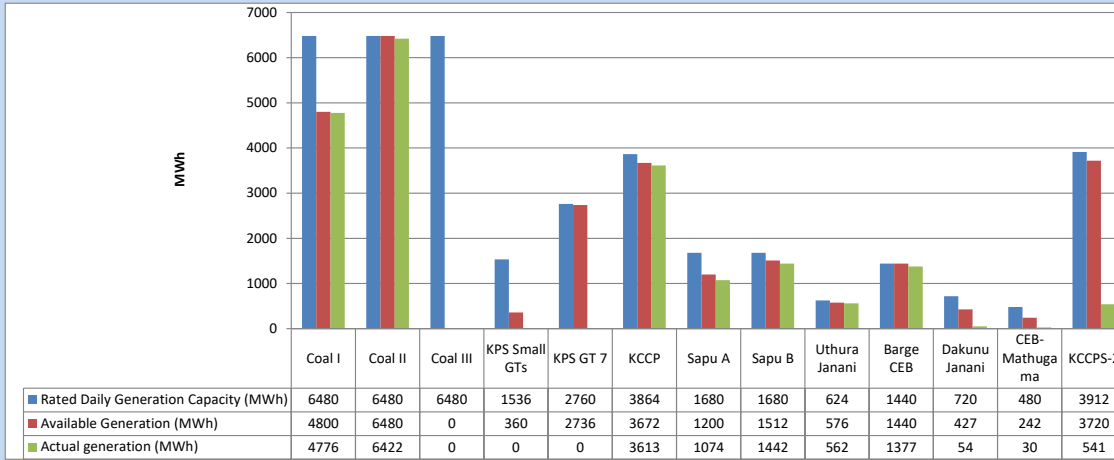
Category	Dispatch (GWh)	
CEB Hydro	106	21.93%
CEB Coal	154	32.02%
CEB Thermal Oil	89	18.40%
IPP Thermal	46	9.58%
SPP Wind	31	6.51%
CEB Wind	28	5.86%
Mini Hydro (Telemetered)	19	3.98%
IPP Solar(Bulk-10MW)	3	0.71%
IPP Waste heat + BMP	5	1.01%
Total	481	

Table 04 - Current Year

Category	Dispatch (GWh)	
CEB Hydro	2,405	24.19%
CEB Coal	3,739	37.61%
CEB Thermal Oil	1,774	17.84%
IPP Thermal	1,036	10.42%
SPP Wind	292	2.93%
CEB Wind	297	2.99%
Mini Hydro (Telemetered)	229	2.31%
IPP Solar(Bulk-10MW)	78	0.78%
IPP Waste heat	92	0.93%
Total	9,942	

3. CEB owned Thermal Plant Dispatch

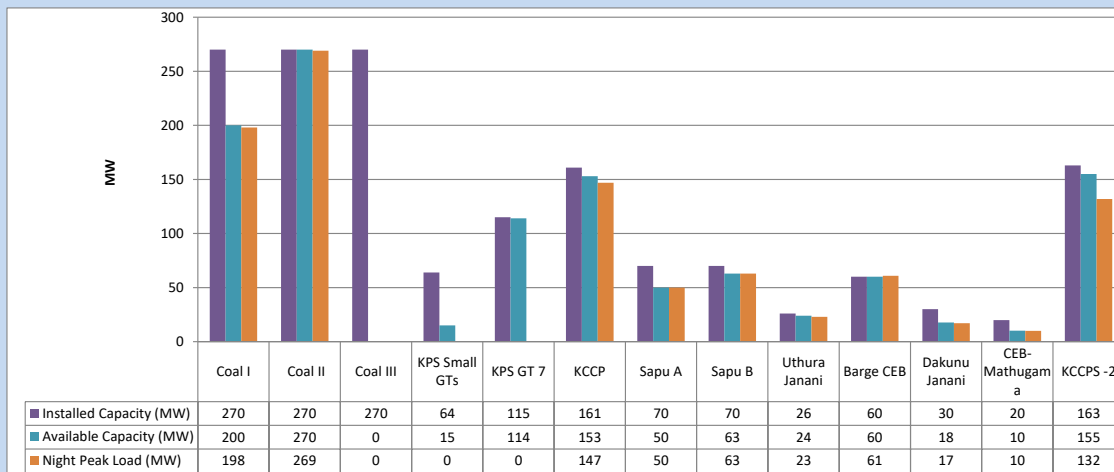
September 13, 2023



Available Generation is estimated based on plant availability at 6.00am on

September 14, 2023

4. CEB owned Thermal Plant Loading at the Night Peak

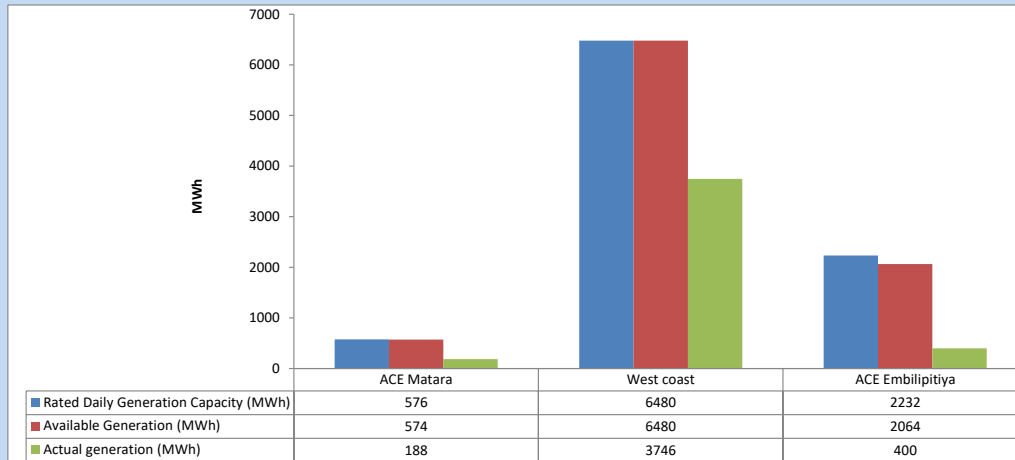


Plant availability is recorded at 6.00 am on

September 14, 2023

5. IPP owned Thermal Plant Dispatch

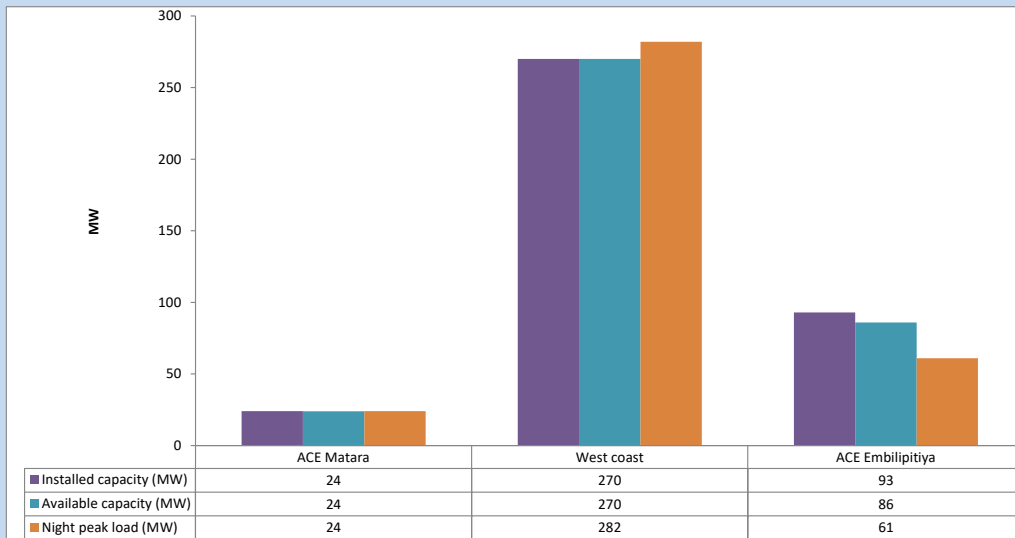
September 13, 2023



Available Generation is estimated based on plant availability at 6.00am on

September 14, 2023

6. IPP owned Thermal Plant Loading at the Night Peak

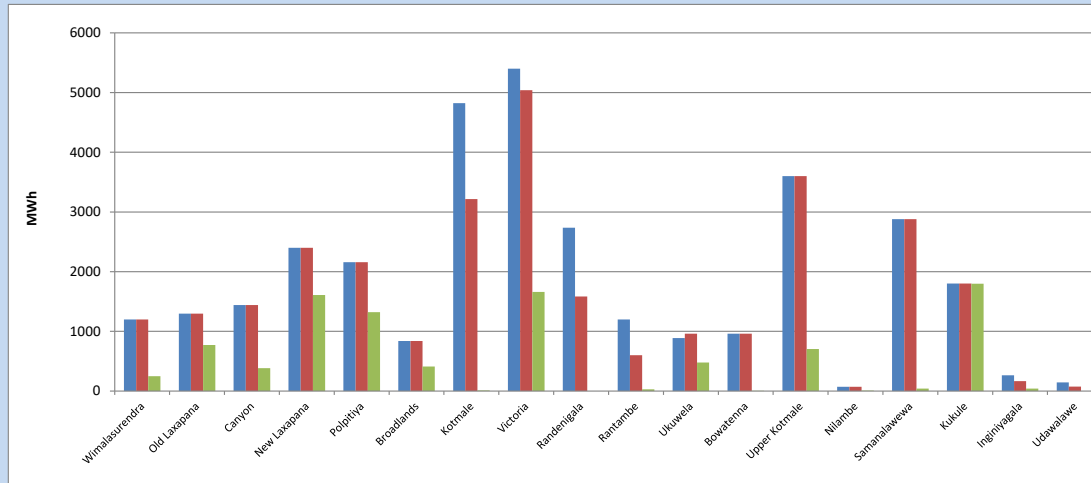


Plant availability is recorded at 6.00 am on

September 14, 2023

7. Major Hydro Plant Dispatch

September 13, 2023

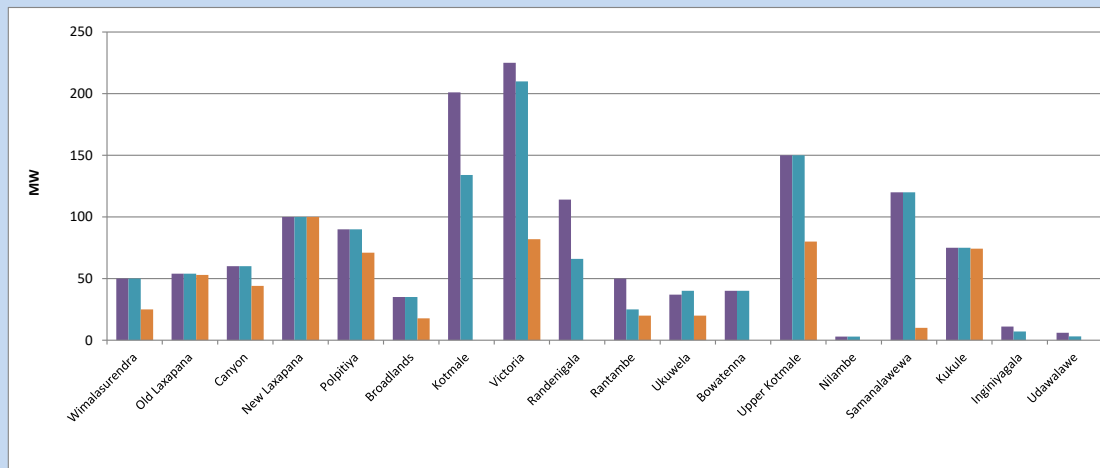


Available Generation is estimated based on plant availability at 6.00am on September 14, 2023
Broadlands power plant is operating in the Commissioning Stage

September 14, 2023

8. Major Hydro Plant Loading at Night Peak

September 13, 2023



Plant availability is recorded at 6.00 am on September 14, 2023
Broadlands power plant is operating in the Commissioning Stage

September 14, 2023

9. Summary of Major Plant performance

Table 05

Plant	Installed Capacity (MW)	Plant Availability (MW)	Night peak Load (MW)	Plant Dispatch (MWh)
Wimalasurendra	50	50	25	250
Old Laxapana	54	54	53	773
Canyon	60	60	44	384
New Laxapana	100	100	100	1,608
Polpitiya	90	90	71	1,320
Broadlands	35	35	18	410
Kotmale	201	134	0	10
Victoria	225	210	82	1,662
Randenigala	114	66	0	0
Rantambe	50	25	20	29
Ukuwela	37	40	20	477
Bowatenna	40	40	0	4
Upper Kotmale	150	150	80	705
Nilambe	3	3	0	7
Samanalawewa	120	120	10	40
Kukule	75	75	74	1,799
Inginiyagala	11	7	0	40
Udawalawe	6	3	0	0
Puttalam Coal I	270	200	198	4,776
Puttalam Coal II	270	270	269	6,422
Puttalam Coal III	270	0	0	0
KPS Small GTs	64	15	0	0
KPS GT 7	115	114	0	0
KCCP	161	153	147	3,613
Sapugaskanda A	70	50	50	1,074
Sapugaskanda B	70	63	63	1,442
Uthura Janani	26	24	23	562
Barge CEB	60	60	61	1,377
CEB-Hambantota	30	18	17	54
CEB-Mathugama	20	10	10	30
ACE Matara	24	24	24	188
Asia Power	50	0	0	0
KCCPS -2	163	155	132	541
West Coast	270	270	282	3,746
Nothern Power	36	0	0	0
ACE Embilipitiya	93	86	61	400
Total	3,483	2,774	2,138	39,753

Plant availability is the availability recorded at 6 am on

September 14, 2023

10. Contribution to the Night Peak in MW

September 13, 2023

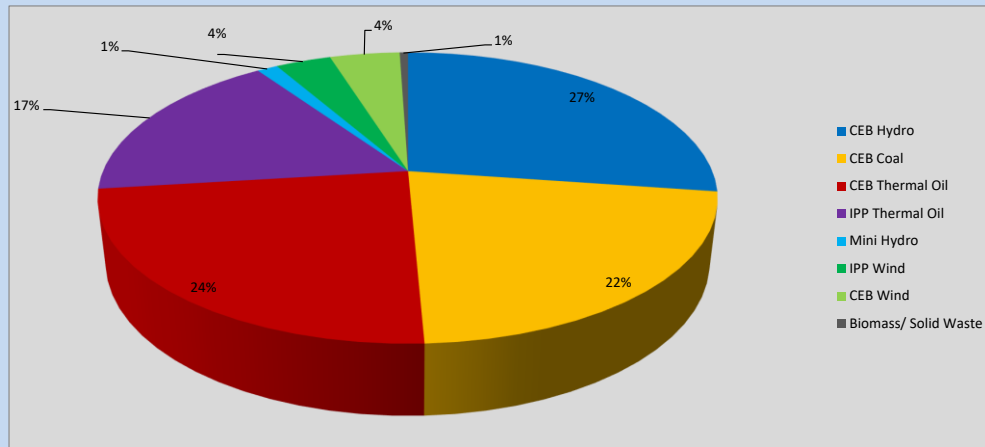


Table 06

CEB Hydro	577	MW
CEB Coal	467	MW
CEB Thermal Oil	503	MW
IPP Thermal Oil	367	MW
Mini Hydro (Telemetered)	27	MW
IPP Wind	73.1	MW
CEB Wind	92.2	MW
Biomass/ Solid Waste	11	MW

Recorded Peak Demand Data

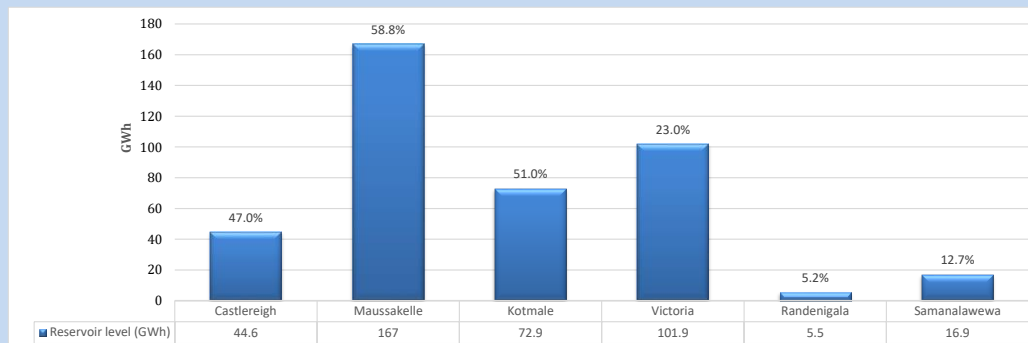
Table 07

Night Peak*	2,118	MW
Day Peak Maximum Demand	1,879	MW
Day Peak Minimum Demand	1,642	MW
Off Peak Minimum Demand	1,211	MW

Above figures are excluding contribution from roof top solar, non telemetered solar and mini hydro plants

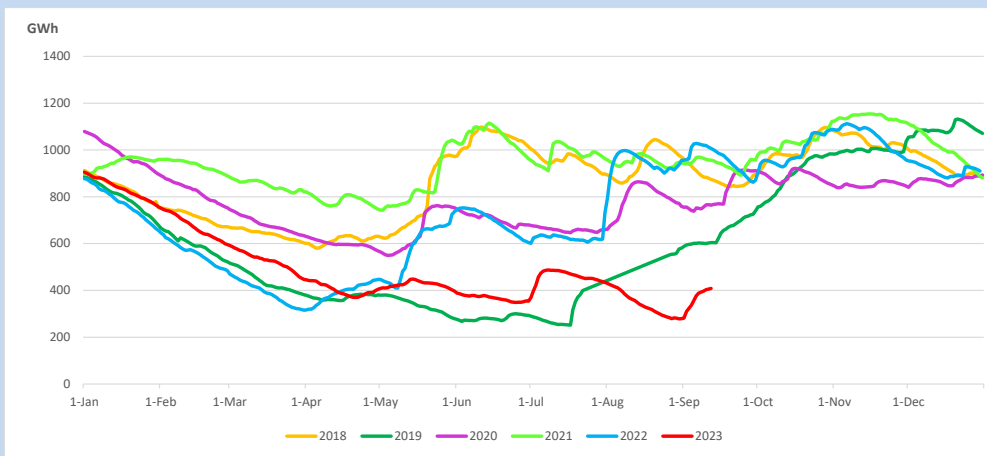
Reservoir Levels -

as at 06.00 Hr on September 14, 2023

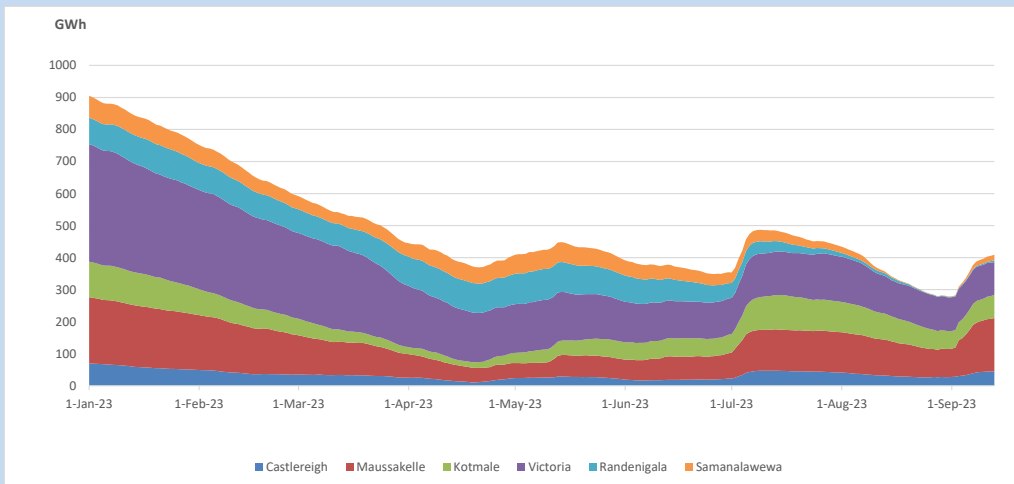


Total Reservoir Level 408.8 GWh
 % of Total capacity 34.0%

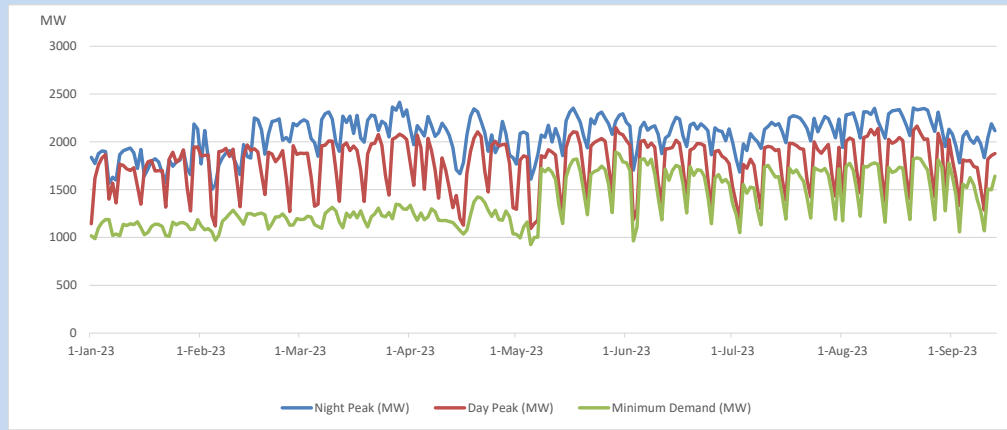
11. Comparison of Total Reservoir Storage Levels with Past Years



12. Variation of Major Hydro Reservoir Levels in the current year (GWh)



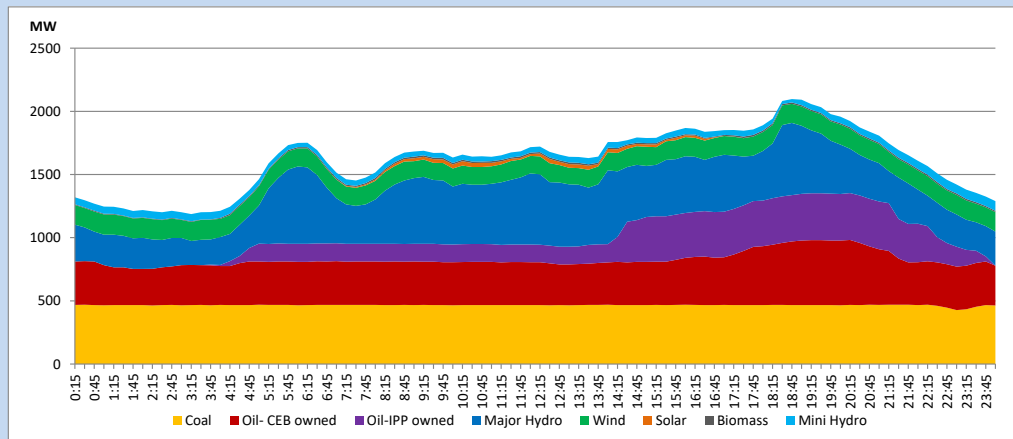
13. Variation of Demand during the current year



The above figures are excluding contribution from roof top solar, non telemetered solar and mini hydro plants

14. Daily Load Curve

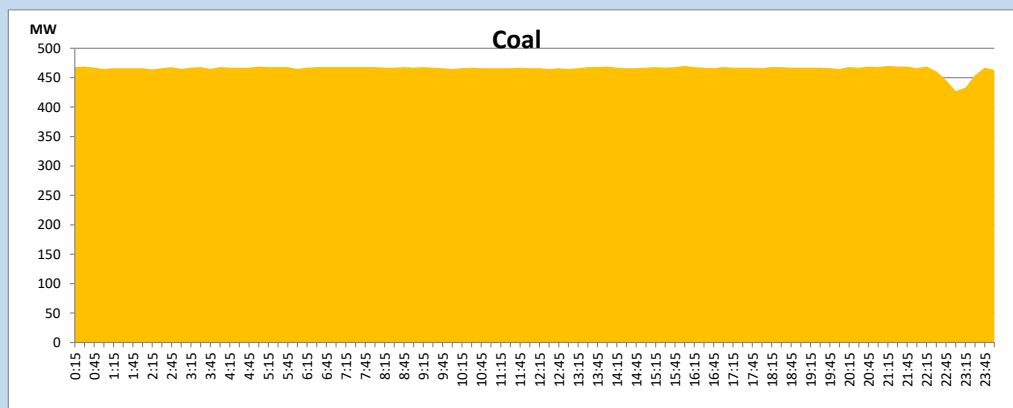
September 13, 2023



Solar and wind data is based on Telemetered Power Stations only

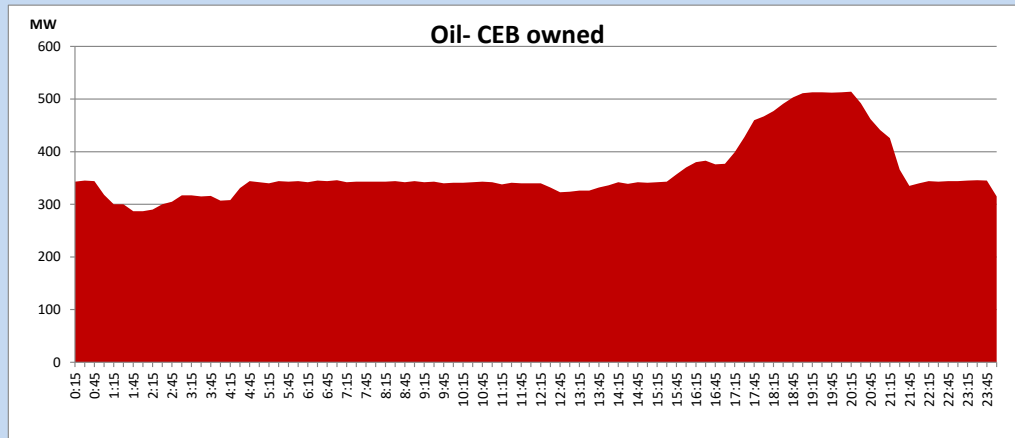
Coal Generation during

September 13, 2023



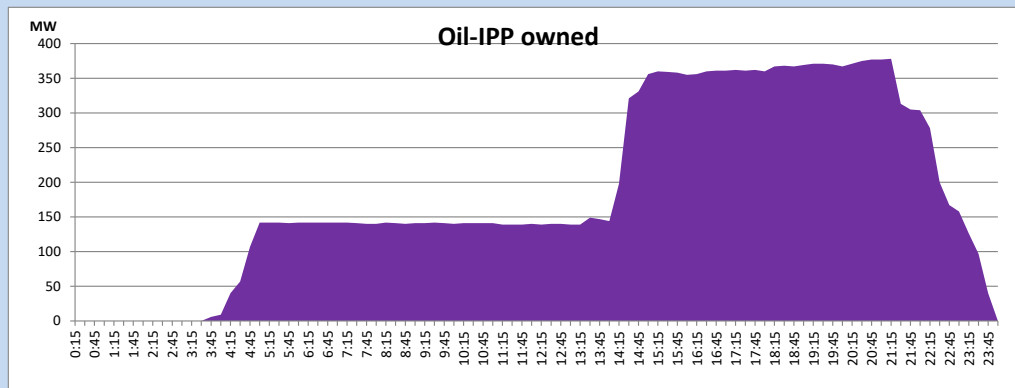
CEB Oil Plant Generation during

September 13, 2023



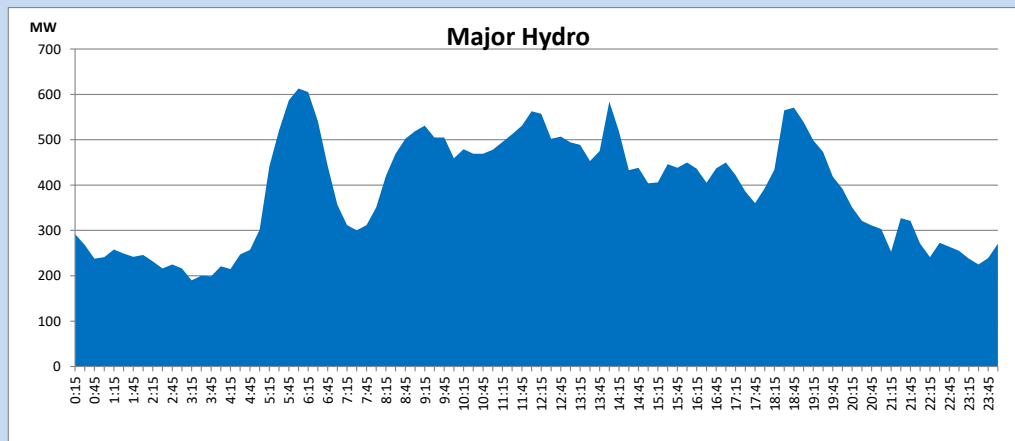
IPP Oil Plant Generation during

September 13, 2023



Major Hydro Generation during

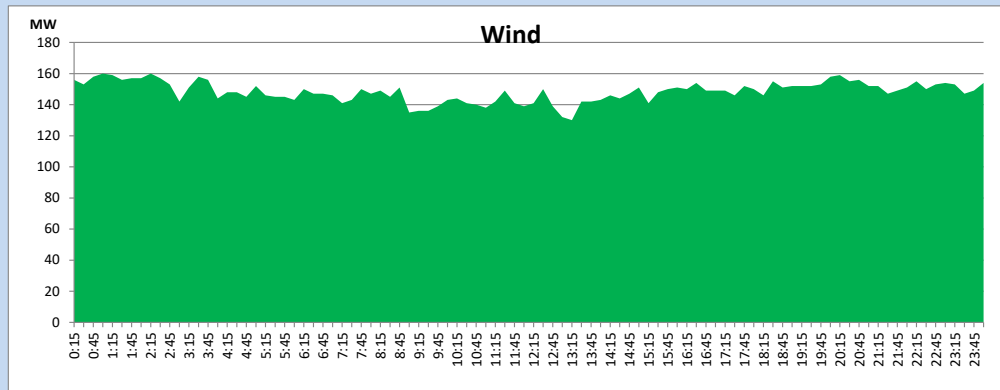
September 13, 2023



Wind Generation during

September 13, 2023

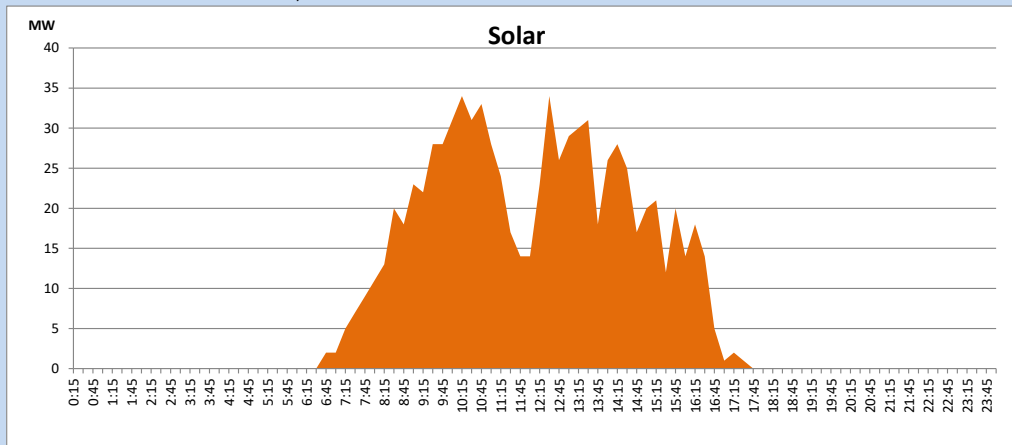
Based on Telemetered Power Stations only



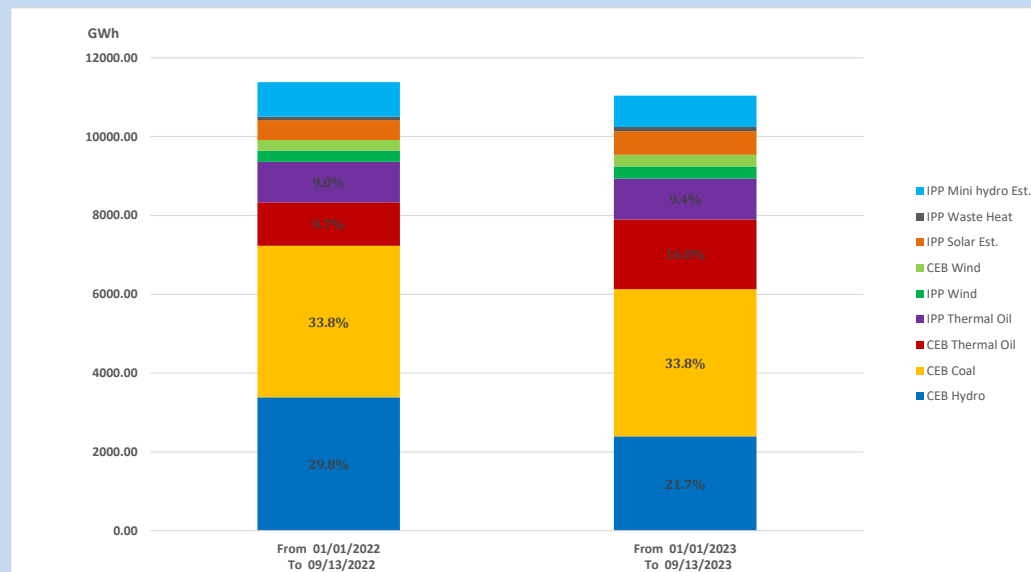
Solar Generation during

September 13, 2023

Based on Telemetered Power Stations only



15. Cumulative Dispatch Comparison with Last Year



Cumulative dispatch
From 01/01/2022 To 09/13/2022
From 01/01/2023 To 09/13/2023

11383 GWh
11037 GWh

The above figures are including contribution from roof top solar, non telemetered solar and mini hydro plants (figures have been adjusted based on the data from the CEB monthly review reports.)

Thermal Plant Fuel types

Table 08

Power Station	Primary Fuel
CEB Thermal	
Sapugaskanda 1	Heavy Fuel
Sapugaskanda 2	Heavy Fuel
Kelanitissa Small Gas Turbines	Auto Diesel
GT 7 - Kelanitissa	Auto Diesel
Kelanitissa CCY	Naphtha or Diesel
Lakvijaya 1	Coal
Lakvijaya 2	Coal
Lakvijaya 3	Coal
Uthuru Janani	Heavy Fuel
Barge CEB	Heavy Fuel
KCCPS -2	Auto Diesel

Power Station	Primary Fuel
Private Thermal	
West Coast	Auto Diesel / Heavy Fuel
ACE Matara	Heavy Fuel
ACE Embilipitiya	Heavy Fuel

Major Incidents reported during the day

September 13, 2023

- 1) Polpitiya unit 01 tripped at 12:01hrs due to turbine governer fault, rejecting 45MW from the system. Unit 01 resumed generation at 14:46hrs.