

Generation and Reservoirs Statistics

September 12, 2023



PUBLIC UTILITIES COMMISSION OF SRI LANKA

1. Daily Generation Mix in MWh

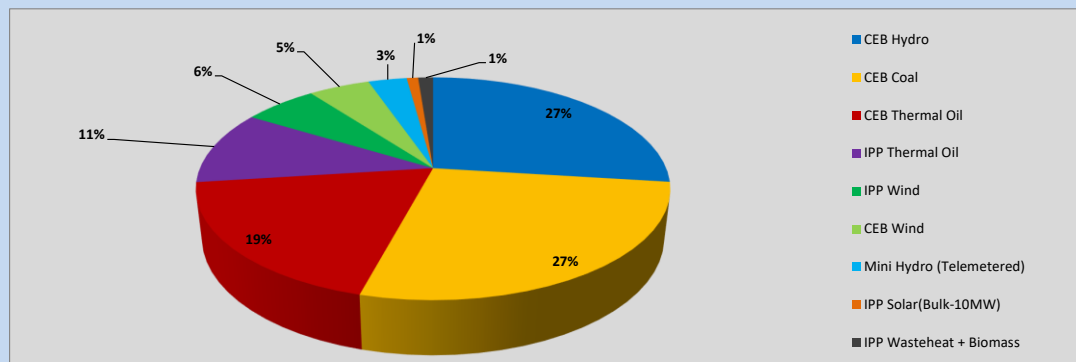


Table 01

	Generation (MWh)
CEB Hydro	10,556
CEB Coal	10,641
CEB Thermal Oil	7,364
IPP Thermal Oil	4,191
IPP Wind	2,356
CEB Wind	1,955
Mini Hydro (Telemetered)	1,231
IPP Solar (Bulk)	365
IPP Waste heat + Biomass	476
Total Generation (Excluding estimated figures)	39,135
* Estimated unserved energy	0
* Estimated Mini Hydro (Non telemetered)	2409
* Estimated IPP Solar PV (Bulk 1-10MW)	304
* Estimated Solar Roof Top PV	1660
Total Generation (Including estimated figures)	43,508

* Estimated figures of CEB generation report

Table 02

	Installed Capacity (MW)
CEB Hydro	1409
CEB Coal	810
CEB Thermal Oil	781
IPP Thermal Oil (West Coast, ACE Matara and ACE Embilipitiya)	387
IPP Wind	148
CEB Wind	100
Mini Hydro	416
IPP Waste heat + Biomass	50
IPP Solar	130
Rooftop Solar* (Ordinary)	267
Rooftop Solar* (LT Bulk)	256
Rooftop Solar* (HT Bulk)	61

Data Source - Monthly Review Report [May-2023]

2. Cumulative Dispatch

Following data excludes the contribution from roof top solar, non telemetered solar and mini hydro plants

Table 03 - Current Month

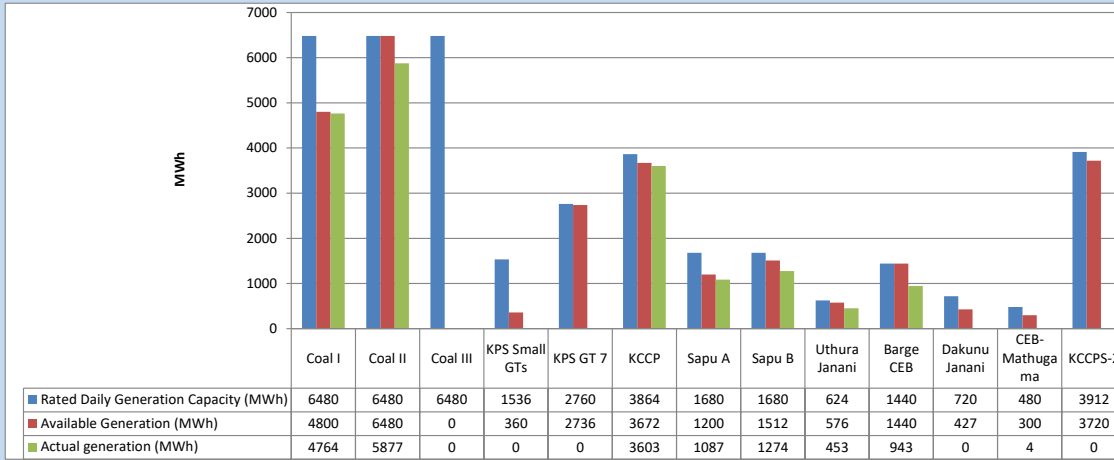
Category	Dispatch (GWh)	
CEB Hydro	96	21.75%
CEB Coal	143	32.37%
CEB Thermal Oil	80	18.09%
IPP Thermal	42	9.46%
SPP Wind	29	6.66%
CEB Wind	26	5.88%
Mini Hydro (Telemetered)	18	4.07%
IPP Solar(Bulk-10MW)	3	0.72%
IPP Waste heat + BMP	4	1.00%
Total	441	

Table 04 - Current Year

Category	Dispatch (GWh)	
CEB Hydro	2,395	24.19%
CEB Coal	3,727	37.64%
CEB Thermal Oil	1,765	17.83%
IPP Thermal	1,032	10.42%
SPP Wind	290	2.93%
CEB Wind	295	2.98%
Mini Hydro (Telemetered)	228	2.30%
IPP Solar(Bulk-10MW)	77	0.78%
IPP Waste heat	92	0.93%
Total	9,902	

3. CEB owned Thermal Plant Dispatch

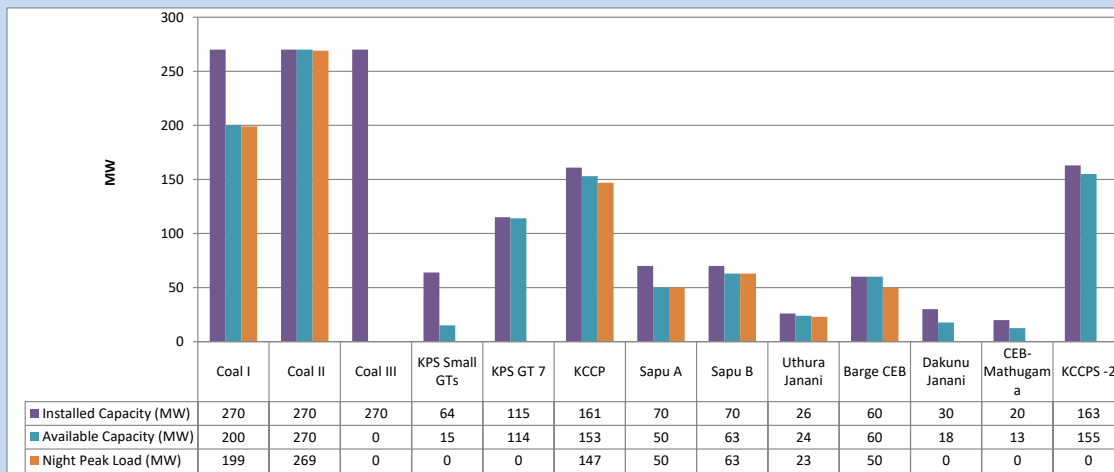
September 12, 2023



Available Generation is estimated based on plant availability at 6.00am on

September 13, 2023

4. CEB owned Thermal Plant Loading at the Night Peak

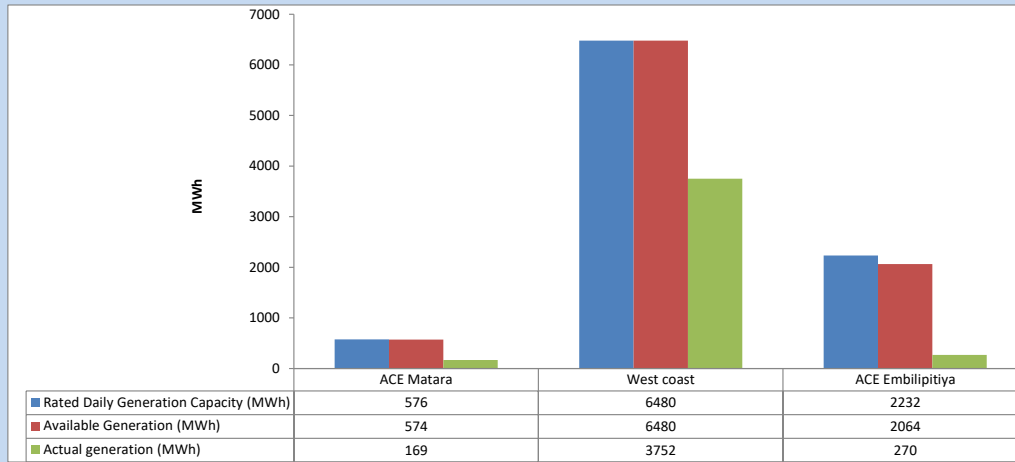


Plant availability is recorded at 6.00 am on

September 13, 2023

5. IPP owned Thermal Plant Dispatch

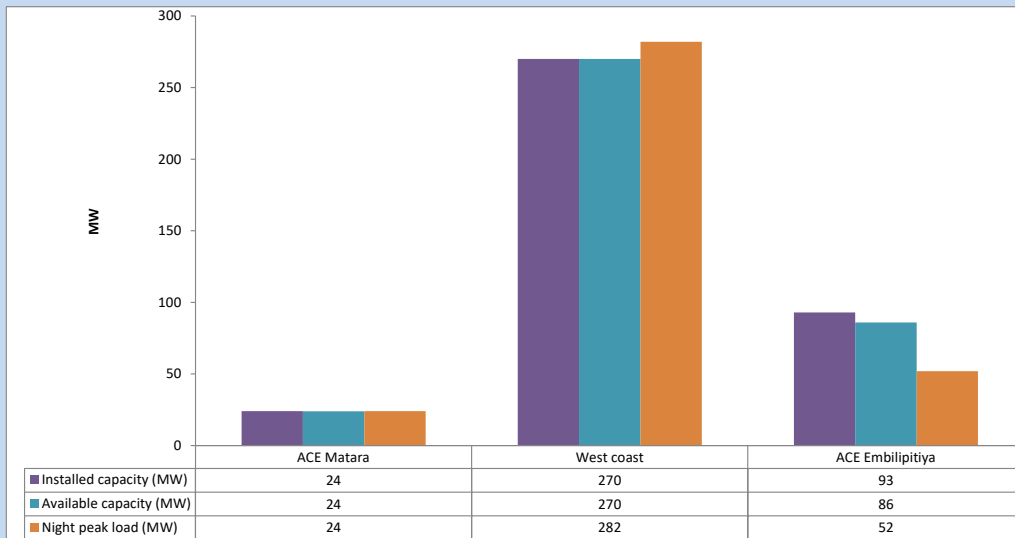
September 12, 2023



Available Generation is estimated based on plant availability at 6.00am on

September 13, 2023

6. IPP owned Thermal Plant Loading at the Night Peak

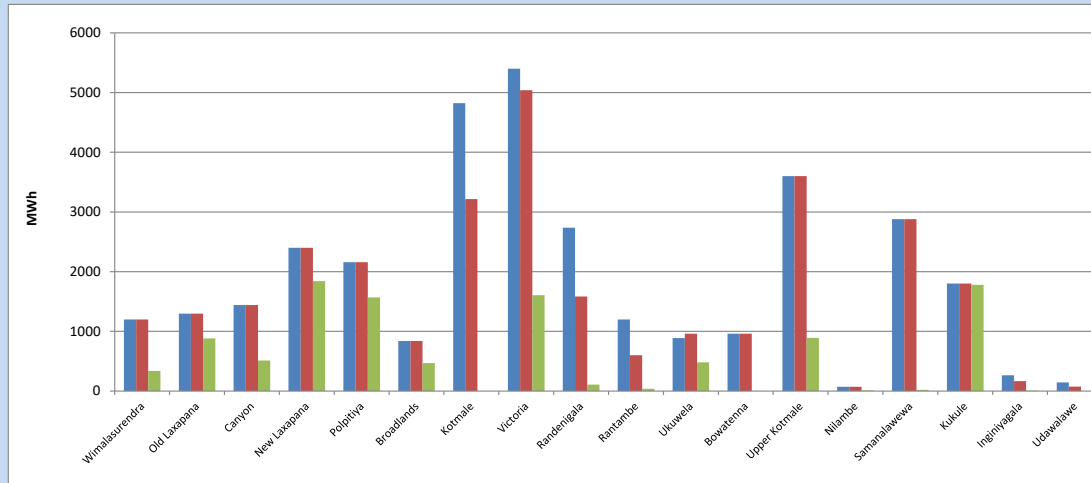


Plant availability is recorded at 6.00 am on

September 13, 2023

7. Major Hydro Plant Dispatch

September 12, 2023

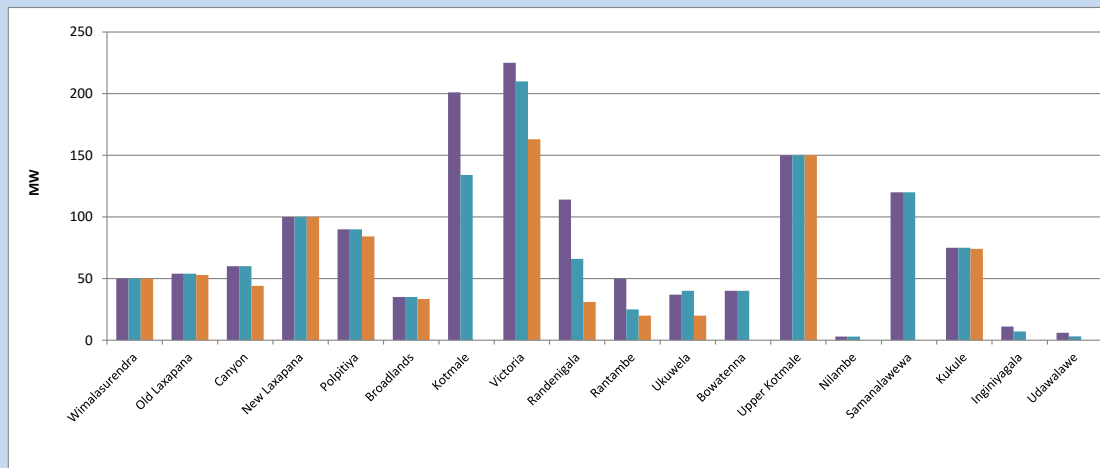


Available Generation is estimated based on plant availability at 6.00am on September 13, 2023
Broadlands power plant is operating in the Commissioning Stage

September 13, 2023

8. Major Hydro Plant Loading at Night Peak

September 12, 2023



Plant availability is recorded at 6.00 am on September 13, 2023
Broadlands power plant is operating in the Commissioning Stage

9. Summary of Major Plant performance

Table 05

Plant	Installed Capacity	Plant Availability	Night peak Load	Plant Dispatch
	(MW)	(MW)	(MW)	(MWh)
Wimalasurendra	50	50	50	338
Old Laxapana	54	54	53	880
Canyon	60	60	44	513
New Laxapana	100	100	100	1,841
Polpitiya	90	90	84	1,570
Broadlands	35	35	33	469
Kotmale	201	134	0	0
Victoria	225	210	163	1,607
Randenigala	114	66	31	109
Rantambe	50	25	20	38
Ukuwela	37	40	20	480
Bowatenna	40	40	0	0
Upper Kotmale	150	150	150	892
Nilambe	3	3	0	11
Samanalawewa	120	120	0	20
Kukule	75	75	74	1,780
Inginiyagala	11	7	0	8
Udawalawe	6	3	0	0
Puttalam Coal I	270	200	199	4,764
Puttalam Coal II	270	270	269	5,877
Puttalam Coal III	270	0	0	0
KPS Small GTs	64	15	0	0
KPS GT 7	115	114	0	0
KCCP	161	153	147	3,603
Sapugaskanda A	70	50	50	1,087
Sapugaskanda B	70	63	63	1,274
Uthura Janani	26	24	23	453
Barge CEB	60	60	50	943
CEB-Hambantota	30	18	0	0
CEB-Mathugama	20	13	0	4
ACE Matara	24	24	24	169
Asia Power	50	0	0	0
KCCPS -2	163	155	0	0
West Coast	270	270	282	3,752
Nothern Power	36	0	0	0
ACE Embilipitiya	93	86	52	270
Total	3,483	2,776	2,194	39,135

Plant availability is the availability recorded at 6 am on

September 13, 2023

10. Contribution to the Night Peak in MW

September 12, 2023

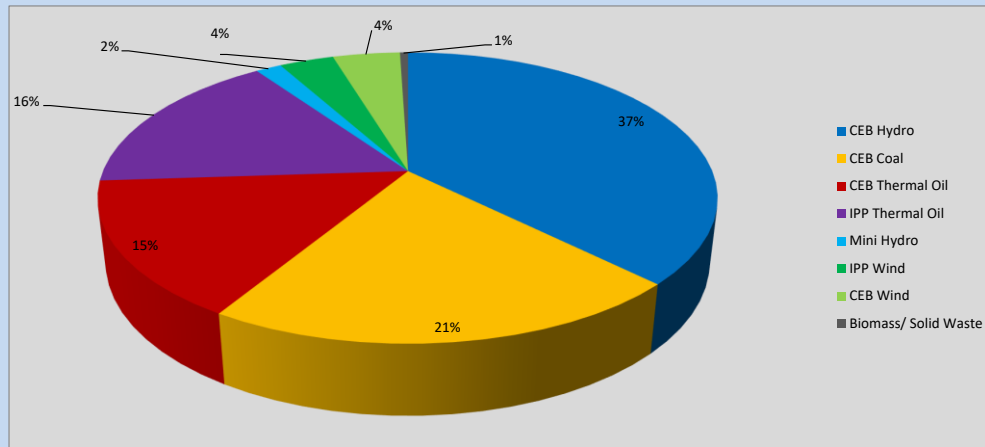


Table 06

CEB Hydro	818	MW
CEB Coal	468	MW
CEB Thermal Oil	333	MW
IPP Thermal Oil	358	MW
Mini Hydro (Telemetered)	35	MW
IPP Wind	74.4	MW
CEB Wind	91.7	MW
Biomass/ Solid Waste	11	MW

Recorded Peak Demand Data

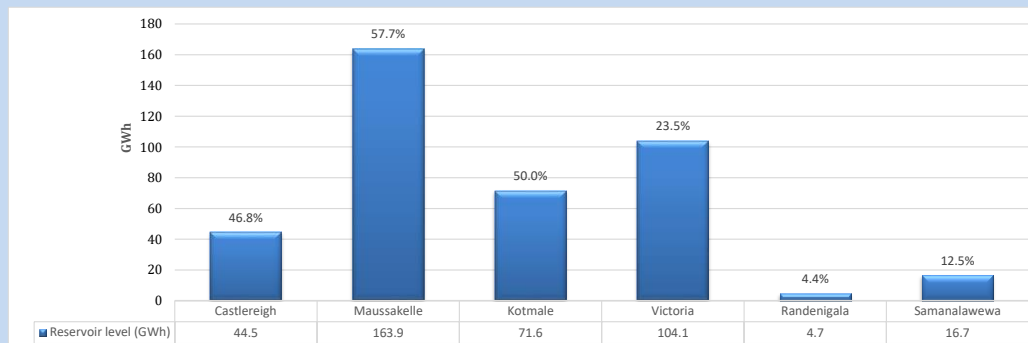
Table 07

Night Peak*	2,189	MW
Day Peak Maximum Demand	1,858	MW
Day Peak Minimum Demand	1,499	MW
Off Peak Minimum Demand	1,135	MW

Above figures are excluding contribution from roof top solar, non telemetered solar and mini hydro plants

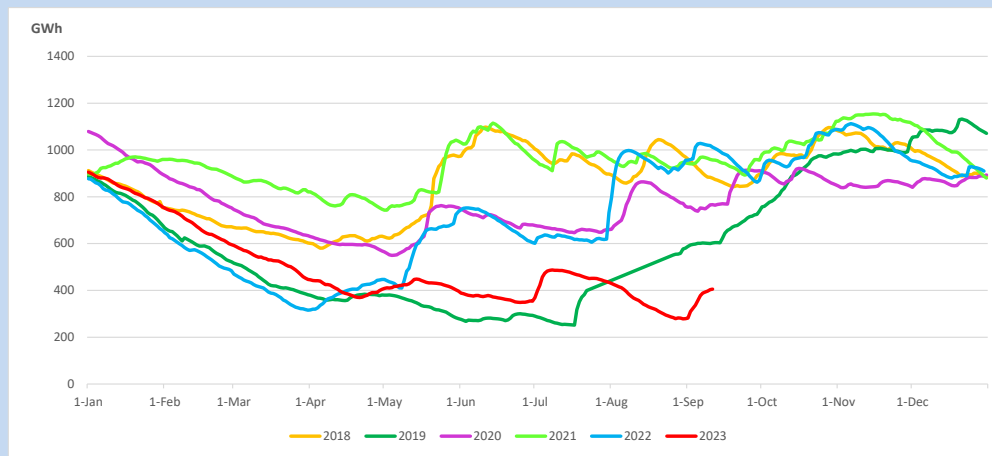
Reservoir Levels -

as at 06.00 Hr on September 13, 2023

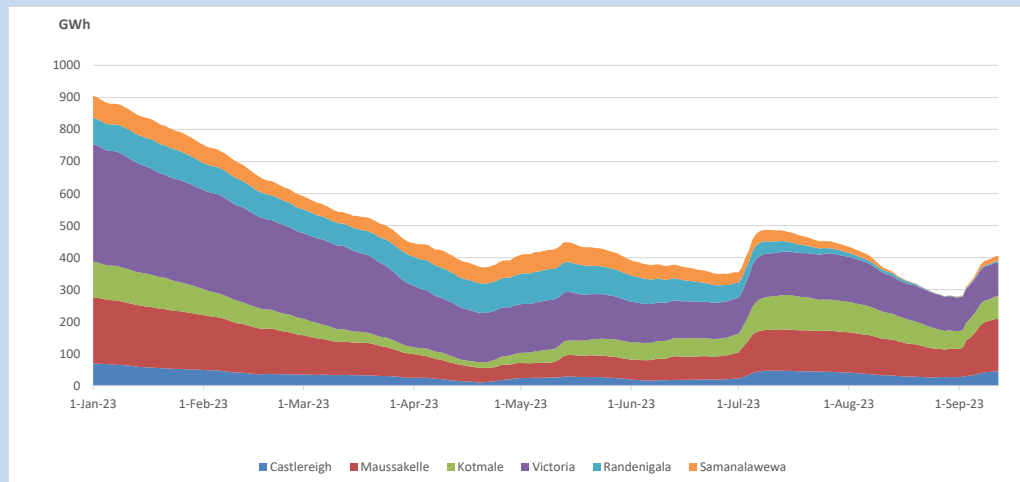


Total Reservoir Level 405.5 GWh
% of Total capacity 33.6%

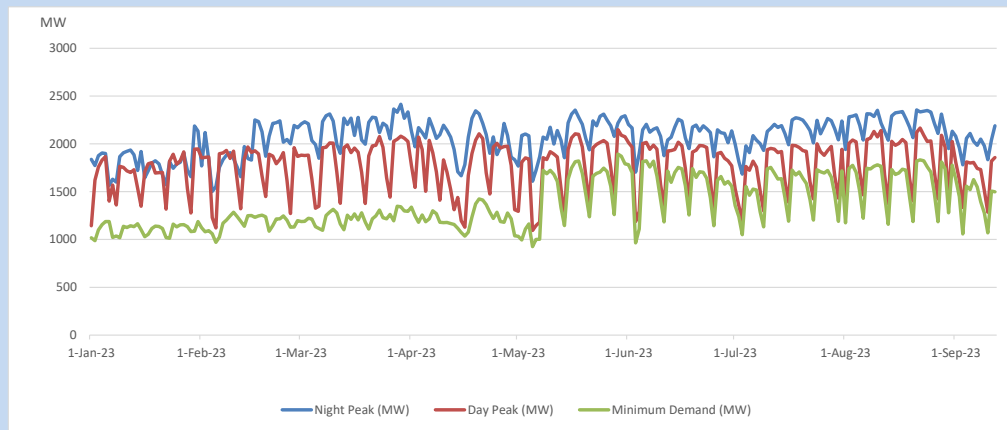
11. Comparison of Total Reservoir Storage Levels with Past Years



12. Variation of Major Hydro Reservoir Levels in the current year (GWh)



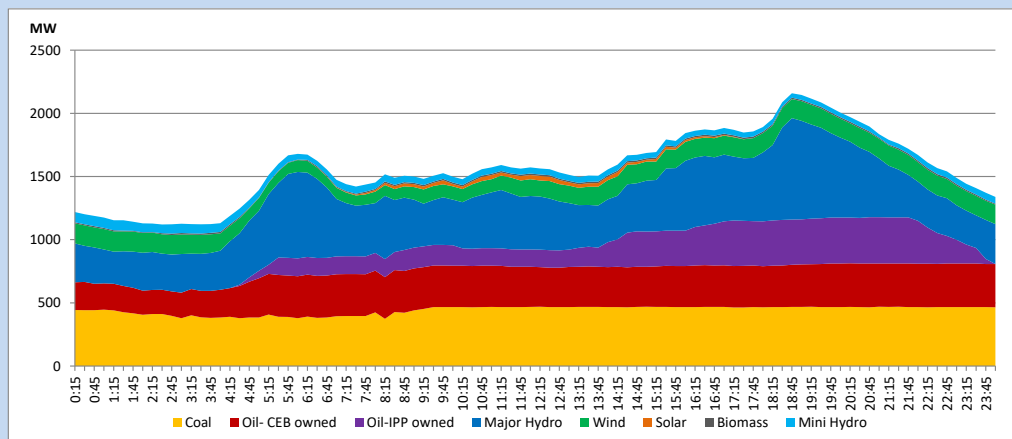
13. Variation of Demand during the current year



The above figures are excluding contribution from roof top solar, non telemetered solar and mini hydro plants

14. Daily Load Curve

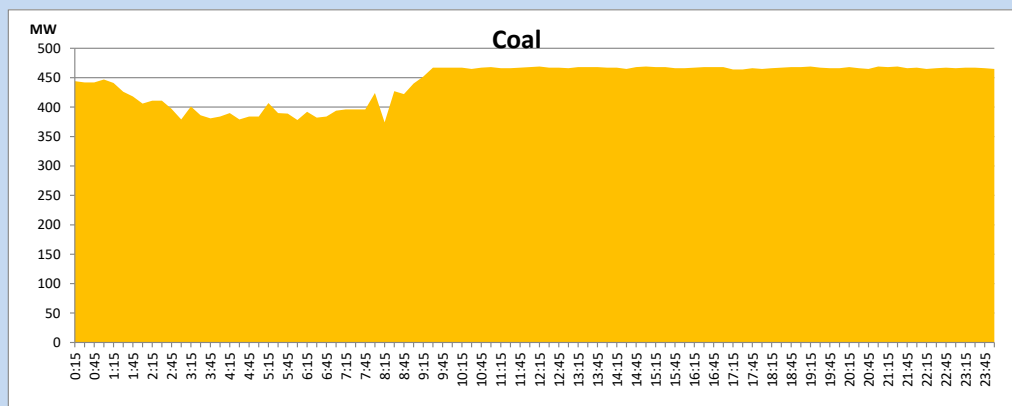
September 12, 2023



Solar and wind data is based on Telemetered Power Stations only

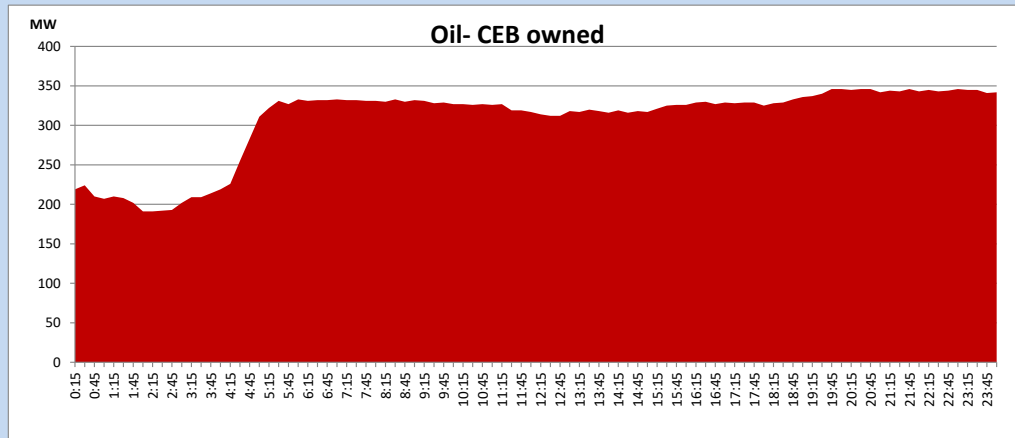
Coal Generation during

September 12, 2023



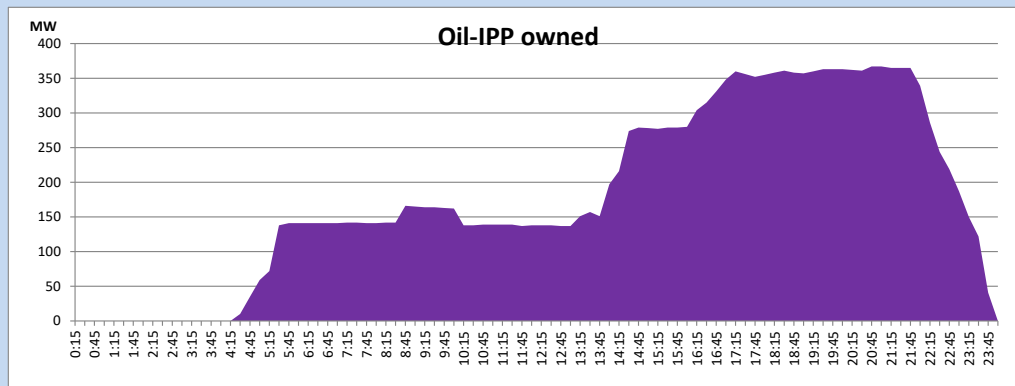
CEB Oil Plant Generation during

September 12, 2023



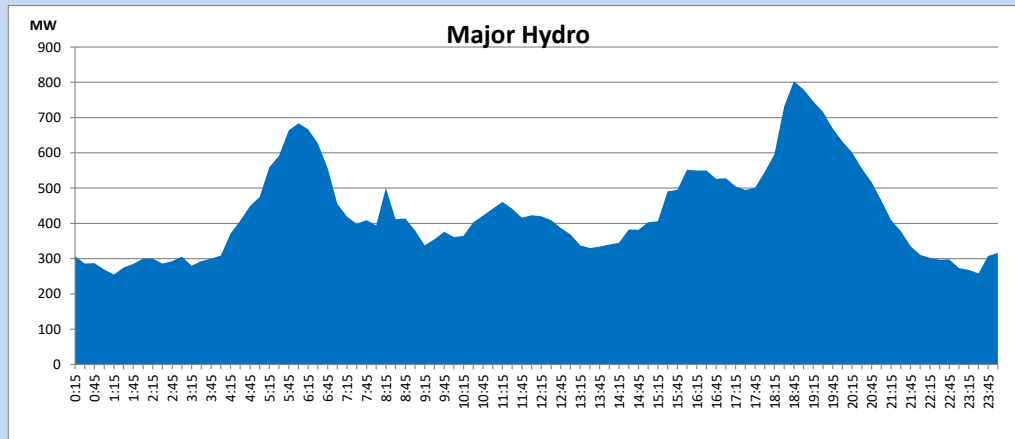
IPP Oil Plant Generation during

September 12, 2023



Major Hydro Generation during

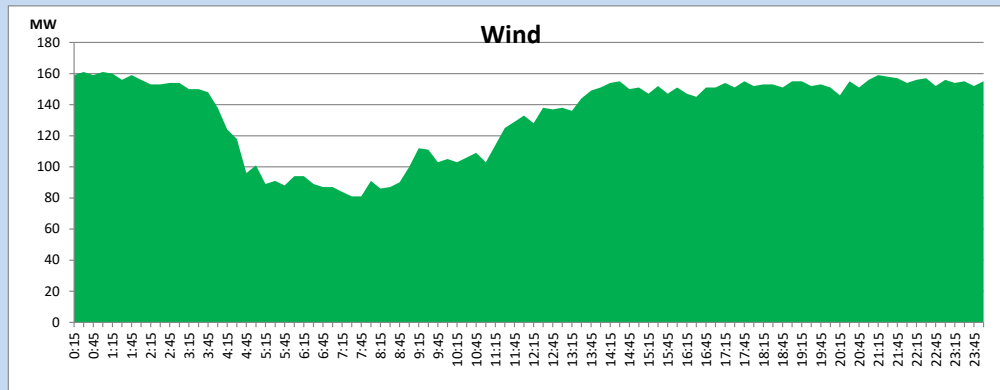
September 12, 2023



Wind Generation during

September 12, 2023

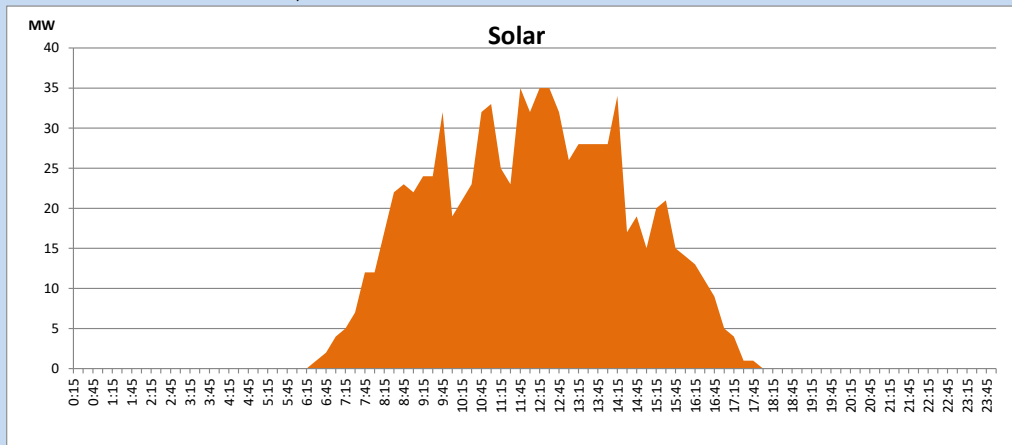
Based on Telemetered Power Stations only



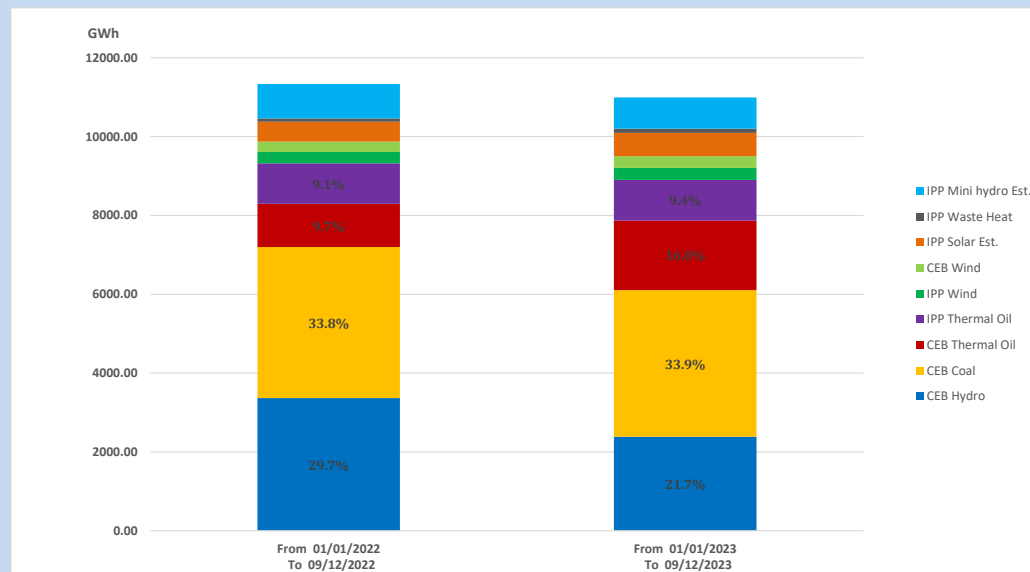
Solar Generation during

September 12, 2023

Based on Telemetered Power Stations only



15. Cumulative Dispatch Comparison with Last Year



Cumulative dispatch

From 01/01/2022 To 09/12/2022

11336 GWh

From 01/01/2023 To 09/12/2023

10993 GWh

The above figures are including contribution from roof top solar, non telemetered solar and mini hydro plants (figures have been adjusted based on the data from the CEB monthly review reports.)

Thermal Plant Fuel types

Table 08

Power Station	Primary Fuel
CEB Thermal	
Sapugaskanda 1	Heavy Fuel
Sapugaskanda 2	Heavy Fuel
Kelanitissa Small Gas Turbines	Auto Diesel
GT 7 - Kelanitissa	Auto Diesel
Kelanitissa CCY	Naphtha or Diesel
Lakvijaya 1	Coal
Lakvijaya 2	Coal
Lakvijaya 3	Coal
Uthuru Janani	Heavy Fuel
Barge CEB	Heavy Fuel
KCCPS -2	Auto Diesel

Power Station	Primary Fuel
Private Thermal	
West Coast	Auto Diesel / Heavy Fuel
ACE Matara	Heavy Fuel
ACE Embilipitiya	Heavy Fuel

Major Incidents reported during the day

September 12, 2023

- 1) The availability of LVPS unit 02 was limited to 200MW (net) from 03:50hrs to 09:30hrs due to a tripping of a coal mill feeder.
- 2) Pannipitiya-Padukka 220kV cct 02 was energized for the soak test at 15:02hrs.
- 3) Kukule pond spilling stopped at 19:00hrs.