

# Generation and Reservoirs Statistics

September 11, 2023



**PUBLIC UTILITIES COMMISSION OF SRI LANKA**

## 1. Daily Generation Mix in MWh

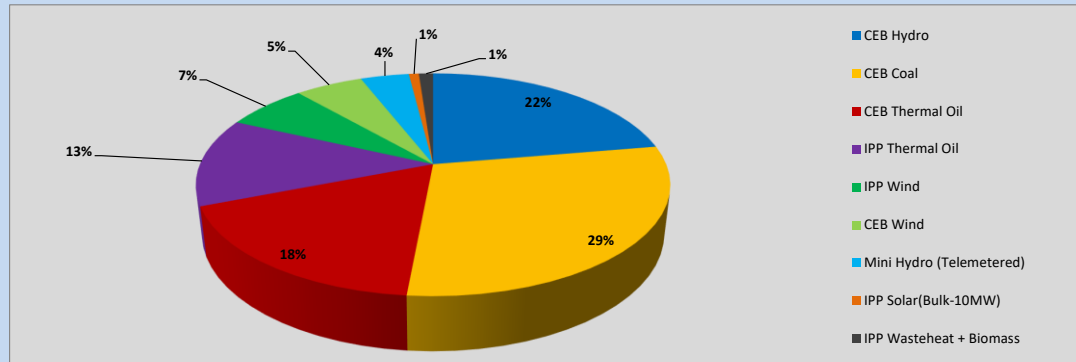


Table 01

	Generation (MWh)
CEB Hydro	8,502
CEB Coal	11,110
CEB Thermal Oil	6,693
IPP Thermal Oil	4,890
IPP Wind	2,543
CEB Wind	2,102
Mini Hydro (Telemetered)	1,507
IPP Solar (Bulk)	310
IPP Waste heat + Biomass	442
<b>Total Generation (Excluding estimated figures)</b>	<b>38,099</b>
* Estimated unserved energy	0
* Estimated Mini Hydro (Non telemetered)	2133
* Estimated IPP Solar PV (Bulk 1-10MW)	304
* Estimated Solar Roof Top PV	1660
<b>Total Generation (Including estimated figures)</b>	<b>42,196</b>

\* Estimated figures of CEB generation report

Table 02

	Installed Capacity (MW)
CEB Hydro	1409
CEB Coal	810
CEB Thermal Oil	781
IPP Thermal Oil (West Coast, ACE Matara and ACE Embilipitiya)	387
IPP Wind	148
CEB Wind	100
Mini Hydro	416
IPP Waste heat + Biomass	50
IPP Solar	130
Rooftop Solar* (Ordinary)	267
Rooftop Solar* (LT Bulk)	256
Rooftop Solar* (HT Bulk)	61

Data Source - Monthly Review Report [May-2023]

## 2. Cumulative Dispatch

Following data excludes the contribution from roof top solar, non telemetered solar and mini hydro plants

Table 03 - Current Month

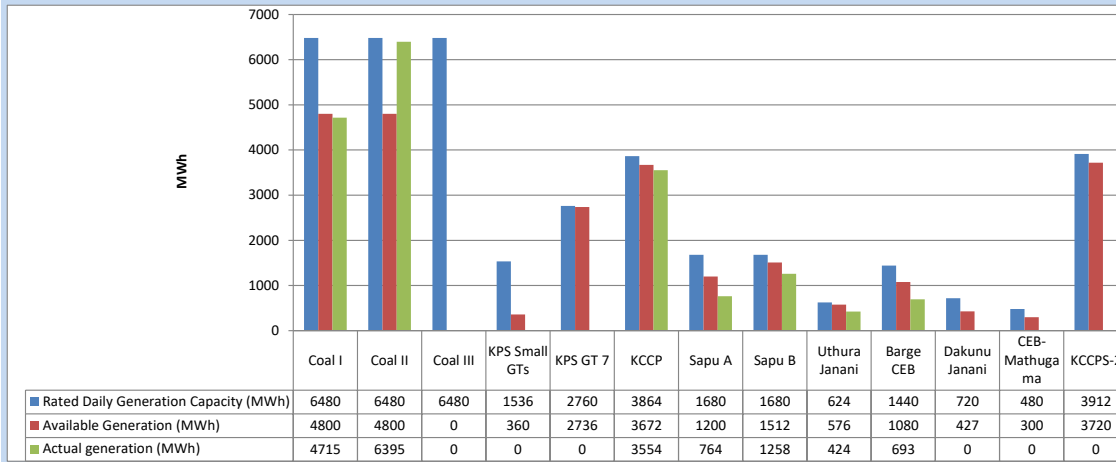
Category	Dispatch (GWh)	
CEB Hydro	85	21.24%
CEB Coal	132	32.87%
CEB Thermal Oil	73	18.02%
IPP Thermal	38	9.34%
SPP Wind	27	6.73%
CEB Wind	24	5.97%
Mini Hydro (Telemetered)	17	4.16%
IPP Solar(Bulk-10MW)	3	0.70%
IPP Waste heat + BMP	4	0.98%
<b>Total</b>	<b>402</b>	

Table 04 - Current Year

Category	Dispatch (GWh)	
CEB Hydro	2,384	24.18%
CEB Coal	3,717	37.69%
CEB Thermal Oil	1,758	17.82%
IPP Thermal	1,028	10.42%
SPP Wind	287	2.91%
CEB Wind	293	2.97%
Mini Hydro (Telemetered)	227	2.30%
IPP Solar(Bulk-10MW)	77	0.78%
IPP Waste heat	91	0.93%
<b>Total</b>	<b>9,863</b>	

### 3. CEB owned Thermal Plant Dispatch

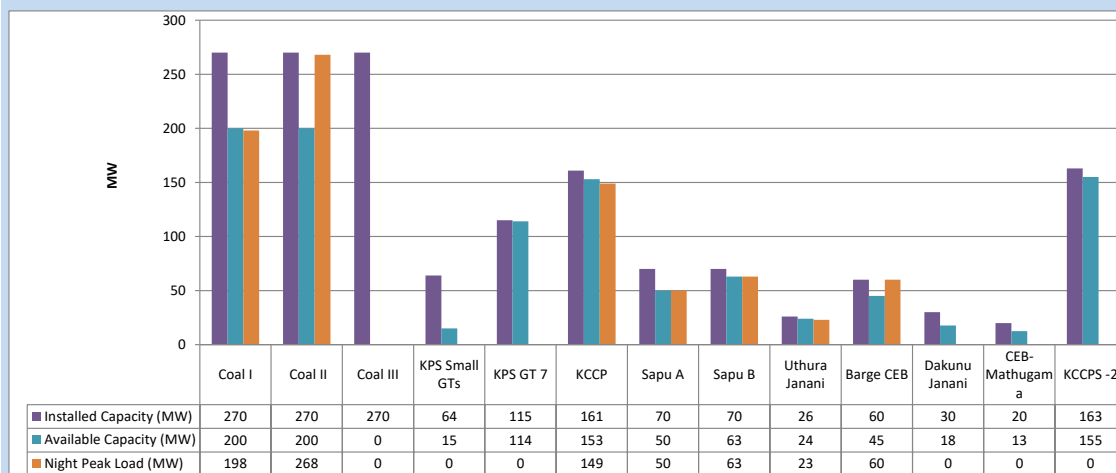
September 11, 2023



Available Generation is estimated based on plant availability at 6.00am on

September 12, 2023

### 4. CEB owned Thermal Plant Loading at the Night Peak

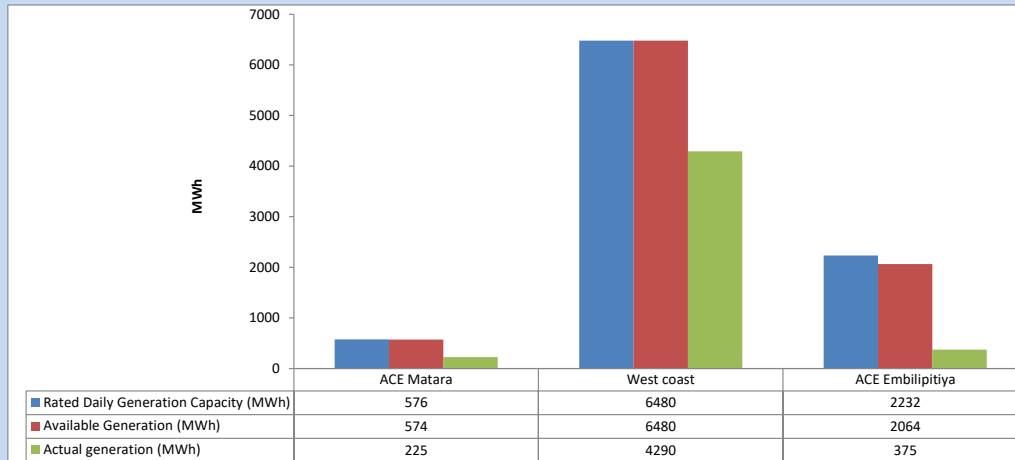


Plant availability is recorded at 6.00 am on

September 12, 2023

### 5. IPP owned Thermal Plant Dispatch

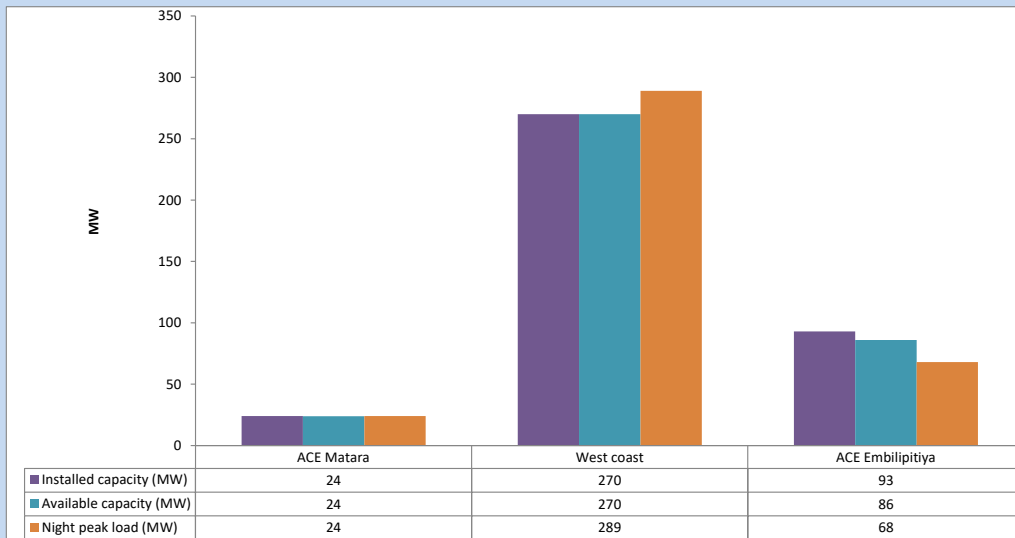
September 11, 2023



Available Generation is estimated based on plant availability at 6.00am on

September 12, 2023

### 6. IPP owned Thermal Plant Loading at the Night Peak

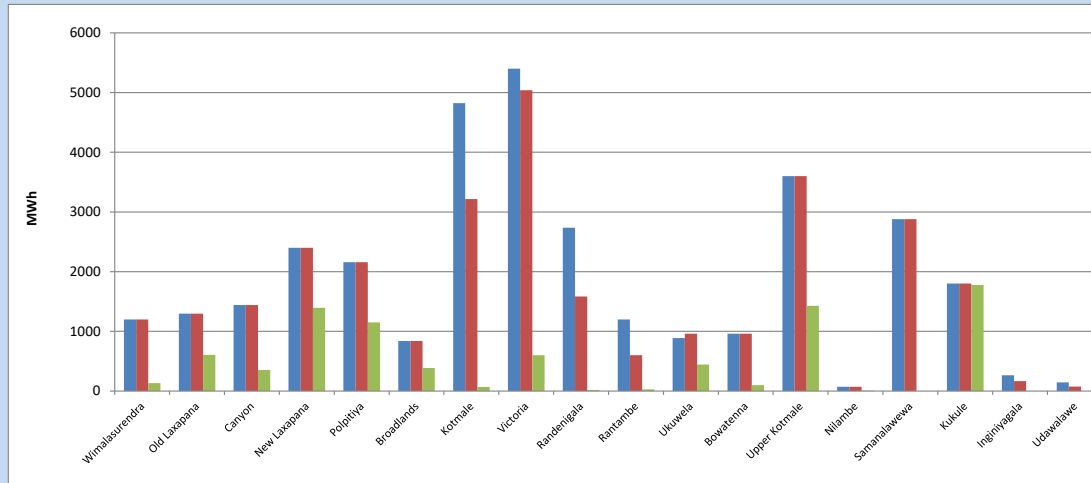


Plant availability is recorded at 6.00 am on

September 12, 2023

### 7. Major Hydro Plant Dispatch

September 11, 2023

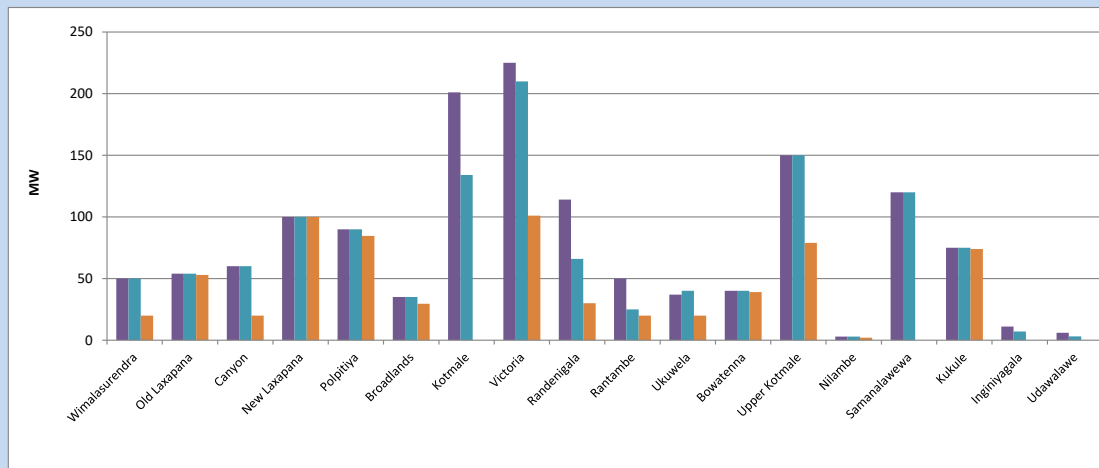


Available Generation is estimated based on plant availability at 6.00am on September 12, 2023  
Broadlands power plant is operating in the Commissioning Stage

September 12, 2023

### 8. Major Hydro Plant Loading at Night Peak

September 11, 2023



Plant availability is recorded at 6.00 am on September 12, 2023  
Broadlands power plant is operating in the Commissioning Stage

September 12, 2023

## 9. Summary of Major Plant performance

**Table 05**

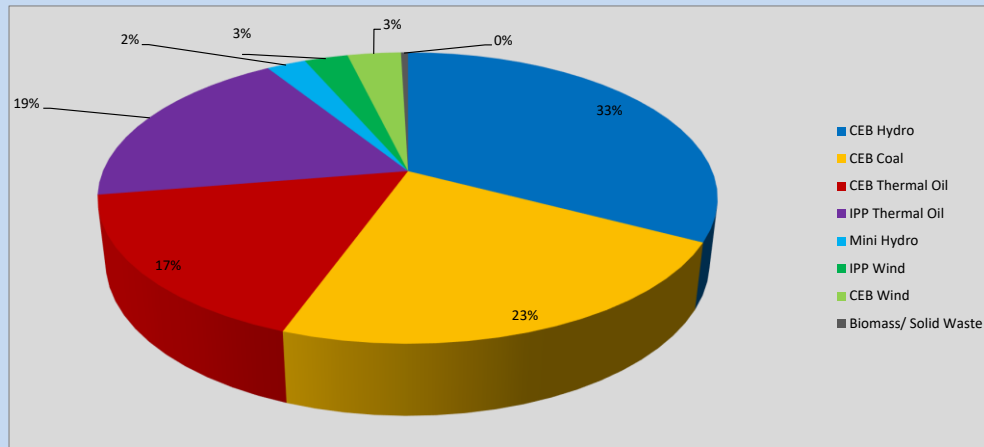
Plant	Installed Capacity (MW)	Plant Availability (MW)	Night peak Load (MW)	Plant Dispatch (MWh)
Wimalasurendra	50	50	20	133
Old Laxapana	54	54	53	605
Canyon	60	60	20	352
New Laxapana	100	100	100	1,396
Polpitiya	90	90	85	1,150
Broadlands	35	35	30	388
Kotmale	201	134	0	70
Victoria	225	210	101	600
Randenigala	114	66	30	16
Rantambe	50	25	20	30
Ukuwela	37	40	20	446
Bowatenna	40	40	39	100
Upper Kotmale	150	150	79	1,429
Nilambe	3	3	2	9
Samanalawewa	120	120	0	0
Kukule	75	75	74	1,778
Inginiyagala	11	7	0	0
Udawalawe	6	3	0	0
Puttalam Coal I	270	200	198	4,715
Puttalam Coal II	270	200	268	6,395
Puttalam Coal III	270	0	0	0
KPS Small GTs	64	15	0	0
KPS GT 7	115	114	0	0
KCCP	161	153	149	3,554
Sapugaskanda A	70	50	50	764
Sapugaskanda B	70	63	63	1,258
Uthura Janani	26	24	23	424
Barge CEB	60	45	60	693
CEB-Hambantota	30	18	0	0
CEB-Mathugama	20	13	0	0
ACE Matara	24	24	24	225
Asia Power	50	0	0	0
KCCPS -2	163	155	0	0
West Coast	270	270	289	4,290
Nothern Power	36	0	0	0
ACE Embilipitiya	93	86	68	375
<b>Total</b>	<b>3,483</b>	<b>2,691</b>	<b>2,046</b>	<b>38,099</b>

Plant availability is the availability recorded at 6 am on

September 12, 2023

### 10. Contribution to the Night Peak in MW

September 11, 2023



**Table 06**

CEB Hydro	667	MW
CEB Coal	466	MW
CEB Thermal Oil	345	MW
IPP Thermal Oil	381	MW
Mini Hydro (Telemetered)	50	MW
IPP Wind	55.5	MW
CEB Wind	68	MW
Biomass/ Solid Waste	9	MW

#### Recorded Peak Demand Data

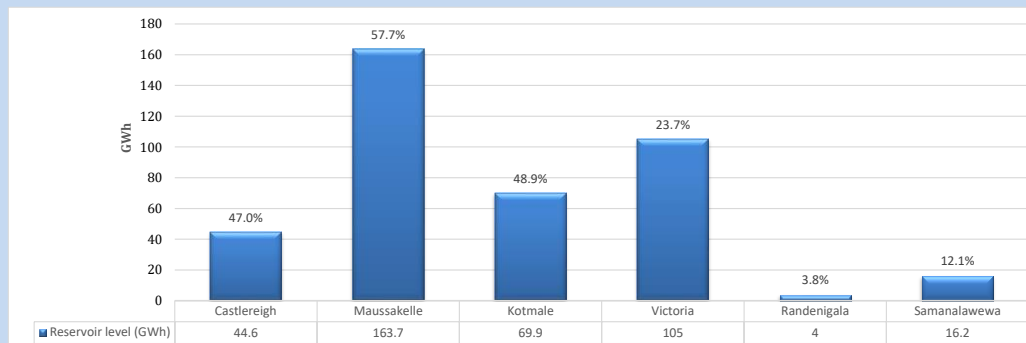
**Table 07**

Night Peak*	2,041	MW
Day Peak Maximum Demand	1,820	MW
Day Peak Minimum Demand	1,506	MW
Off Peak Minimum Demand	1,048	MW

Above figures are excluding contribution from roof top solar, non telemetered solar and mini hydro plants

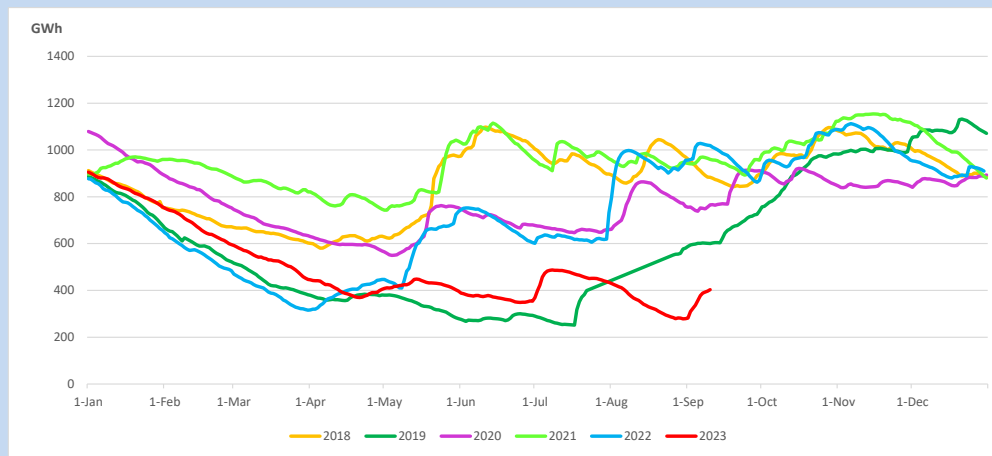
#### Reservoir Levels -

as at 06.00 Hr on September 12, 2023

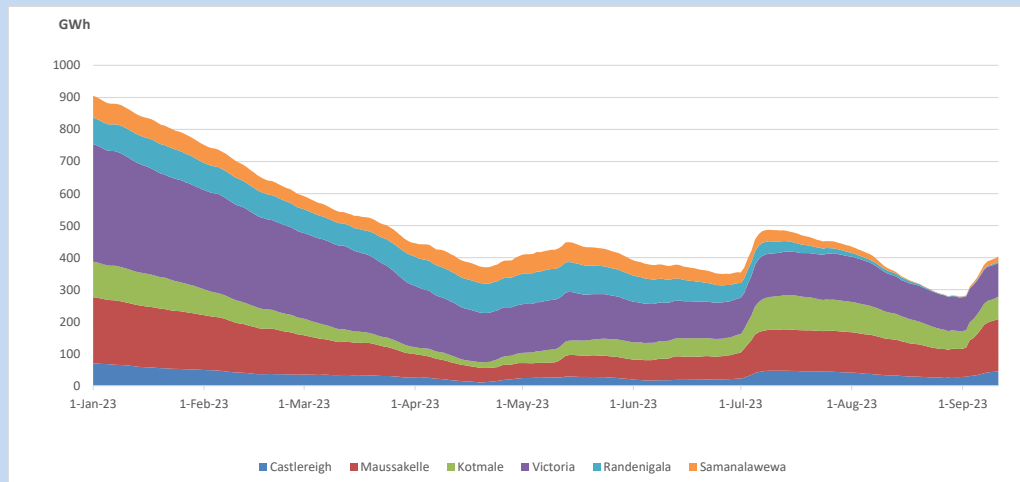


Total Reservoir Level 403.4 GWh  
% of Total capacity 33.5%

### 11. Comparison of Total Reservoir Storage Levels with Past Years

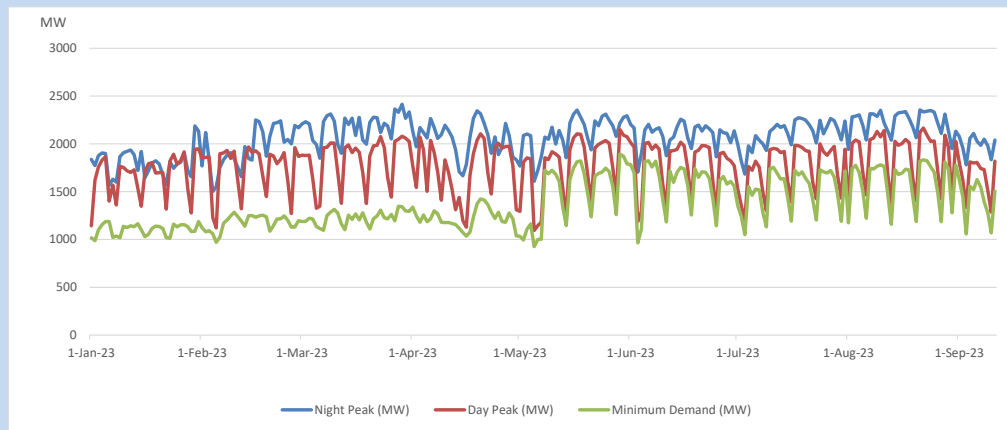


### 12. Variation of Major Hydro Reservoir Levels in the current year (GWh)





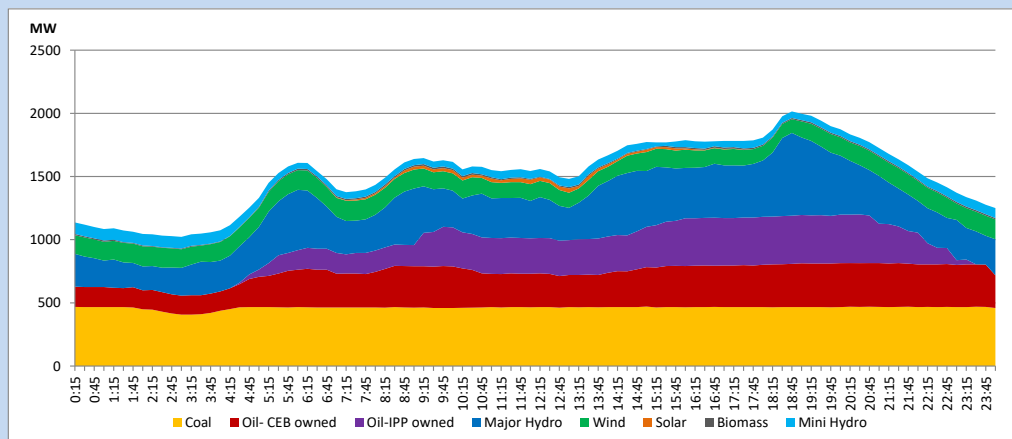
### 13. Variation of Demand during the current year



The above figures are excluding contribution from roof top solar, non telemetered solar and mini hydro plants

### 14. Daily Load Curve

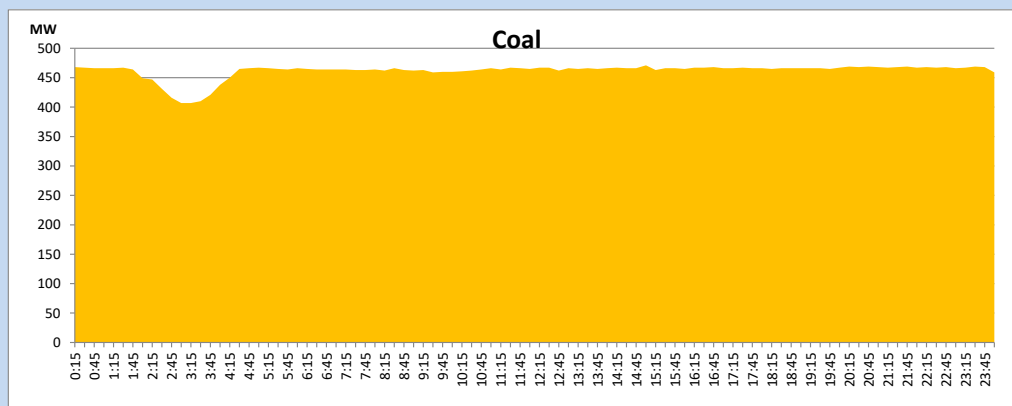
September 11, 2023



Solar and wind data is based on Telemetered Power Stations only

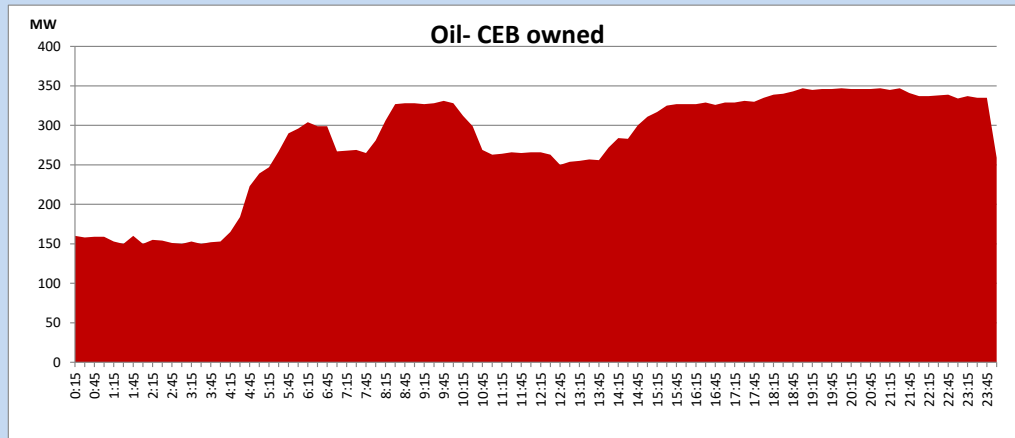
### Coal Generation during

September 11, 2023



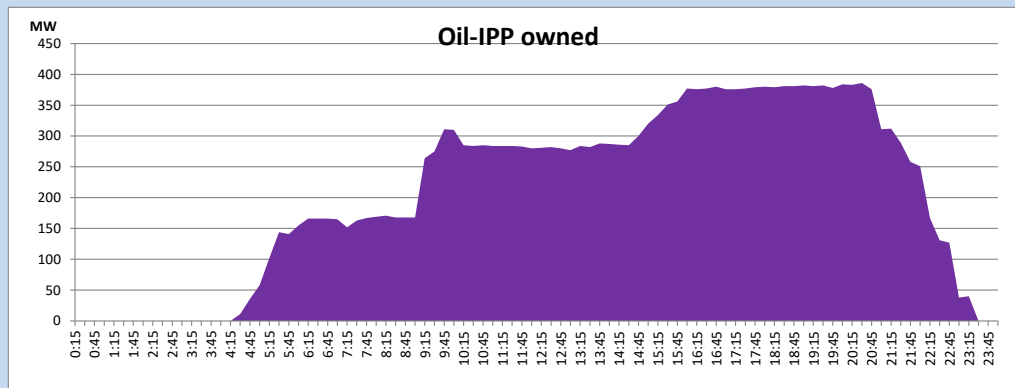
CEB Oil Plant Generation during

September 11, 2023



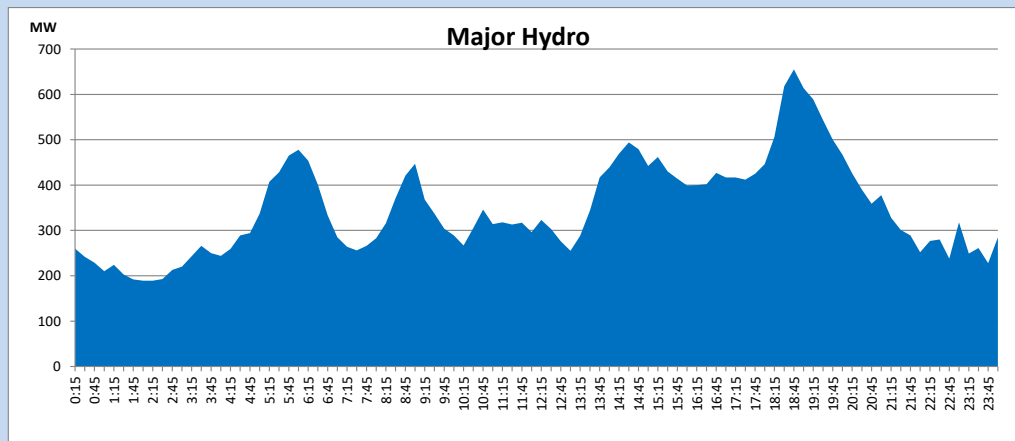
IPP Oil Plant Generation during

September 11, 2023



Major Hydro Generation during

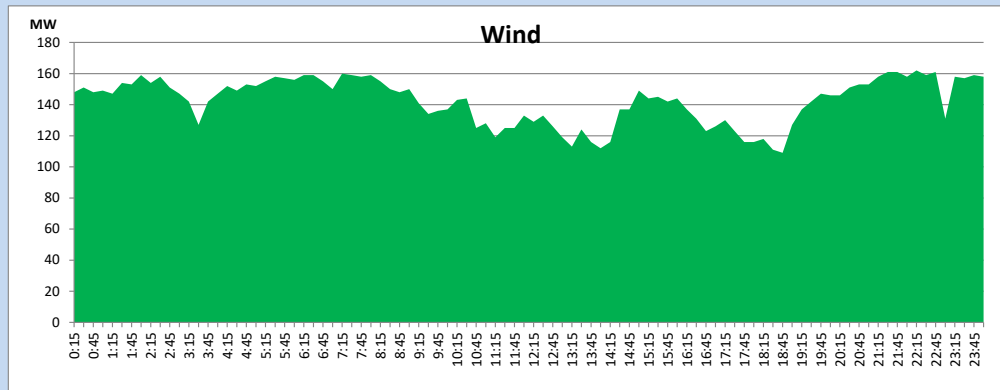
September 11, 2023



## Wind Generation during

September 11, 2023

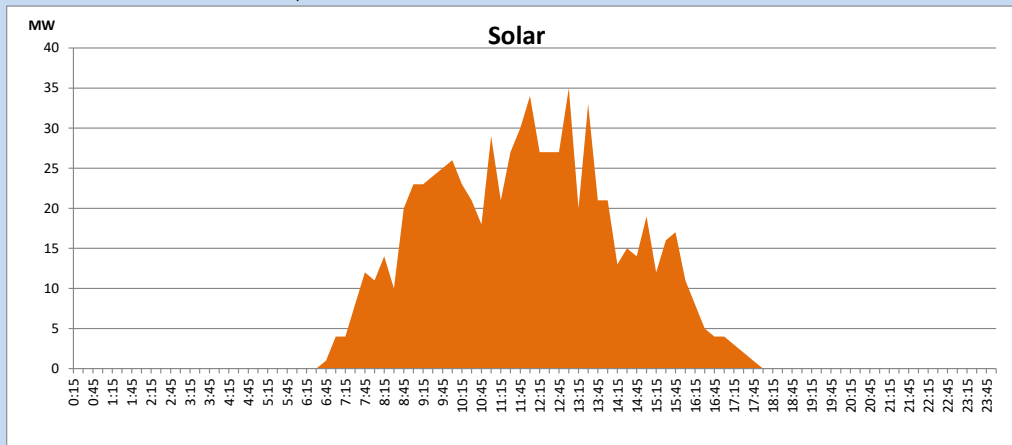
Based on Telemetered Power Stations only



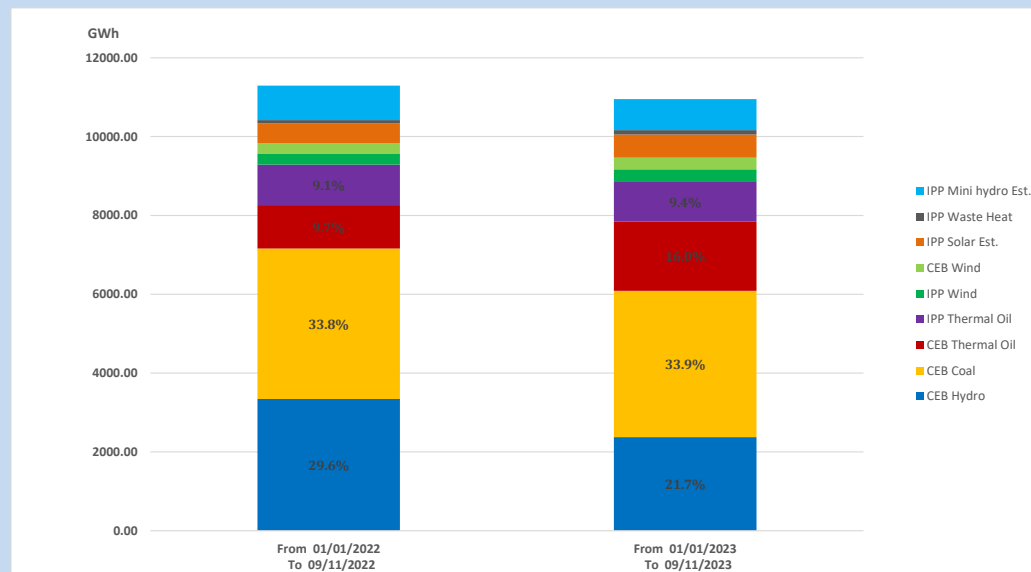
## Solar Generation during

September 11, 2023

Based on Telemetered Power Stations only



## 15. Cumulative Dispatch Comparison with Last Year



Cumulative dispatch  
 From 01/01/2022 To 09/11/2022  
 From 01/01/2023 To 09/11/2023

11292 GWh  
 10949 GWh

The above figures are including contribution from roof top solar, non telemetered solar and mini hydro plants (figures have been adjusted based on the data from the CEB monthly review reports.)

Thermal Plant Fuel types

Table 08

Power Station	Primary Fuel
CEB Thermal	
Sapugaskanda 1	Heavy Fuel
Sapugaskanda 2	Heavy Fuel
Kelanitissa Small Gas Turbines	Auto Diesel
GT 7 - Kelanitissa	Auto Diesel
Kelanitissa CCY	Naphtha or Diesel
Lakvijaya 1	Coal
Lakvijaya 2	Coal
Lakvijaya 3	Coal
Uthuru Janani	Heavy Fuel
Barge CEB	Heavy Fuel
KCCPS -2	Auto Diesel

Power Station	Primary Fuel
Private Thermal	
West Coast	Auto Diesel / Heavy Fuel
ACE Matara	Heavy Fuel
ACE Embilipitiya	Heavy Fuel

Major Incidents reported during the day

September 11, 2023

1) Kukule pond spilling continues to the present hour.

2) The availability of LVPS unit 02 is limited to 200MW (net) from 03:50hrs (12.09.2023) due to a tripping of a coal mill feeder. LVPS unit 02 is yet to reach full load.