

# Generation and Reservoirs Statistics

September 10, 2023



**PUBLIC UTILITIES COMMISSION OF SRI LANKA**

## 1. Daily Generation Mix in MWh

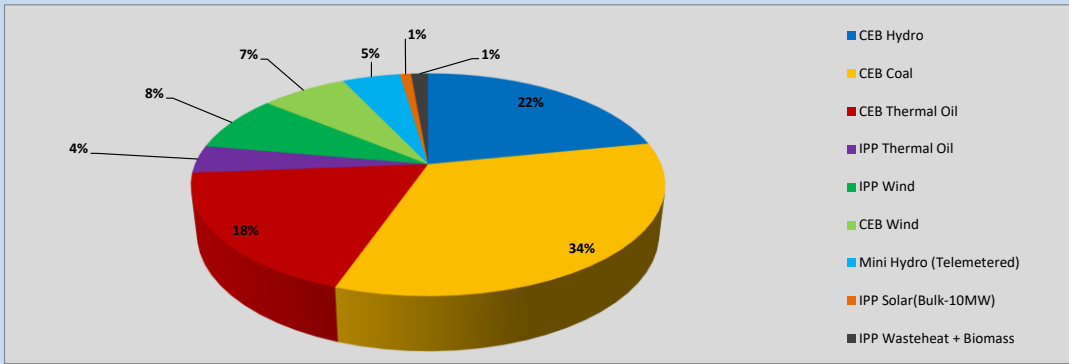


Table 01

	Generation (MWh)
CEB Hydro	7,039
CEB Coal	10,815
CEB Thermal Oil	5,942
IPP Thermal Oil	1,293
IPP Wind	2,640
CEB Wind	2,275
Mini Hydro (Telemetered)	1,522
IPP Solar (Bulk)	291
IPP Waste heat + Biomass	450
<b>Total Generation (Excluding estimated figures)</b>	<b>32,267</b>
* Estimated unserved energy	0
* Estimated Mini Hydro (Non telemetered)	2118
* Estimated IPP Solar PV (Bulk 1-10MW)	304
* Estimated Solar Roof Top PV	1660
<b>Total Generation (Including estimated figures)</b>	<b>36,349</b>

\* Estimated figures of CEB generation report

Table 02

	Installed Capacity (MW)
CEB Hydro	1409
CEB Coal	810
CEB Thermal Oil	781
IPP Thermal Oil (West Coast, ACE Matara and ACE Embilipitiya)	387
IPP Wind	148
CEB Wind	100
Mini Hydro	416
IPP Waste heat + Biomass	50
IPP Solar	130
Rooftop Solar* (Ordinary)	267
Rooftop Solar* (LT Bulk)	256
Rooftop Solar* (HT Bulk)	61

Data Source - Monthly Review Report [May-2023]

## 2. Cumulative Dispatch

Following data excludes the contribution from roof top solar, non telemetered solar and mini hydro plants

Table 03 - Current Month

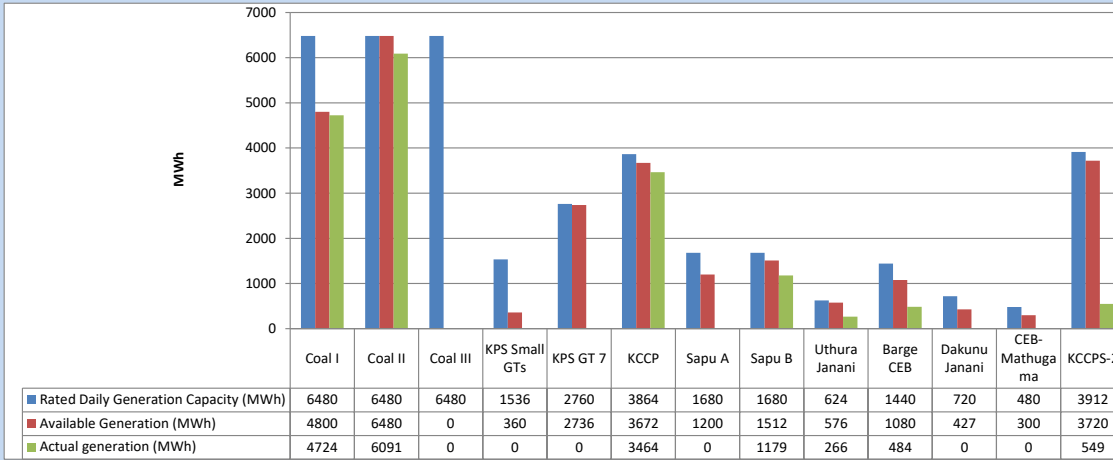
Category	Dispatch (GWh)	
CEB Hydro	77	21.13%
CEB Coal	121	33.26%
CEB Thermal Oil	66	18.07%
IPP Thermal	33	8.97%
SPP Wind	25	6.73%
CEB Wind	22	6.01%
Mini Hydro (Telemetered)	15	4.18%
IPP Solar(Bulk-10MW)	2	0.68%
IPP Waste heat + BMP	4	0.96%
<b>Total</b>	<b>364</b>	

Table 04 - Current Year

Category	Dispatch (GWh)	
CEB Hydro	2,376	24.18%
CEB Coal	3,706	37.72%
CEB Thermal Oil	1,751	17.82%
IPP Thermal	1,023	10.41%
SPP Wind	285	2.90%
CEB Wind	291	2.96%
Mini Hydro (Telemetered)	225	2.29%
IPP Solar(Bulk-10MW)	77	0.78%
IPP Waste heat	91	0.93%
<b>Total</b>	<b>9,825</b>	

### 3. CEB owned Thermal Plant Dispatch

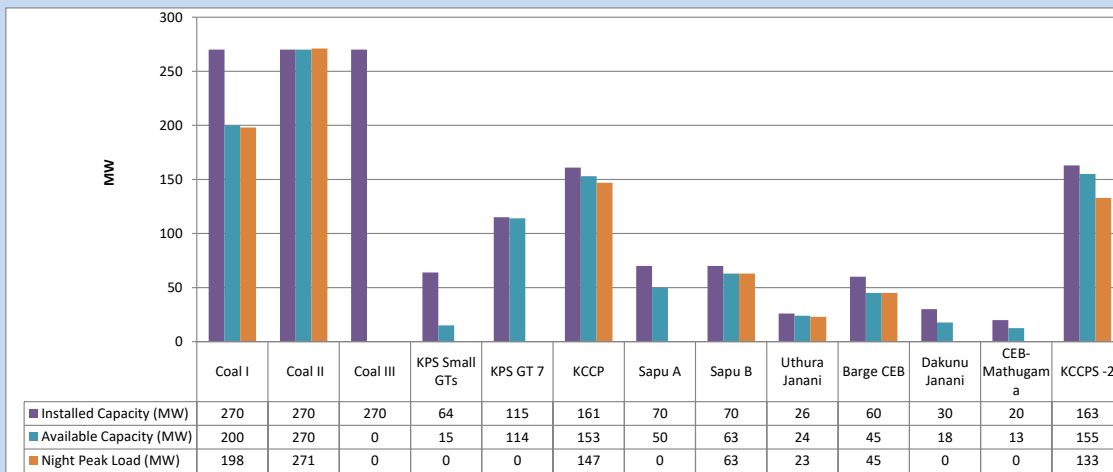
September 10, 2023



Available Generation is estimated based on plant availability at 6.00am on

September 11, 2023

### 4. CEB owned Thermal Plant Loading at the Night Peak

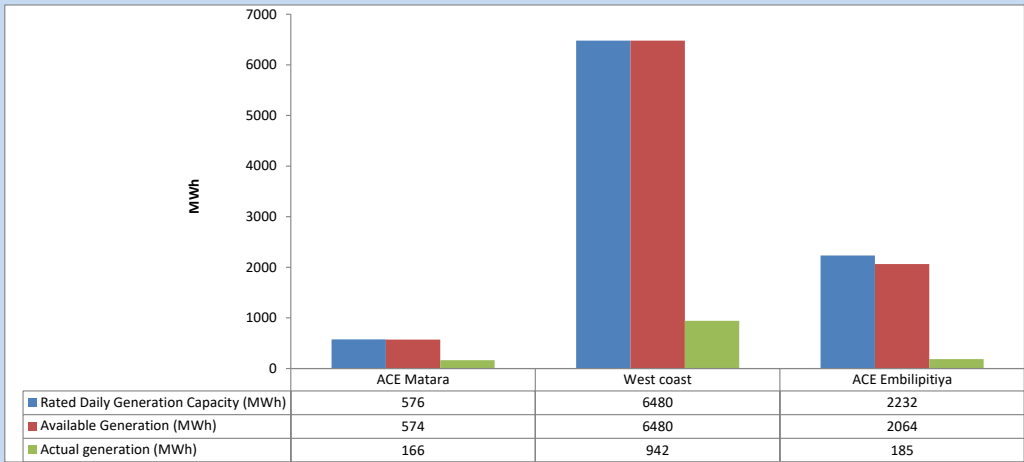


Plant availability is recorded at 6.00 am on

September 11, 2023

5. IPP owned Thermal Plant Dispatch

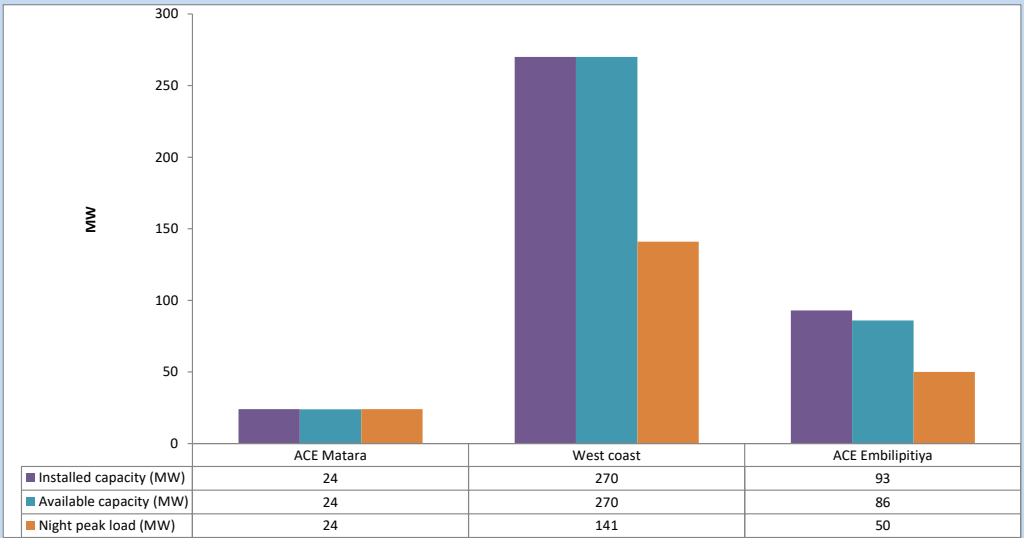
September 10, 2023



Available Generation is estimated based on plant availability at 6.00am on

September 11, 2023

6. IPP owned Thermal Plant Loading at the Night Peak

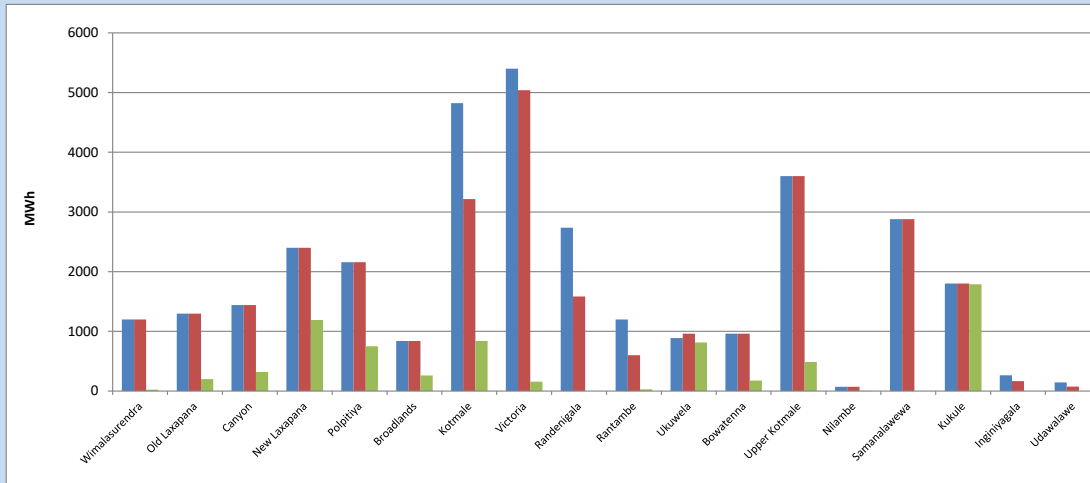


Plant availability is recorded at 6.00 am on

September 11, 2023

### 7. Major Hydro Plant Dispatch

September 10, 2023

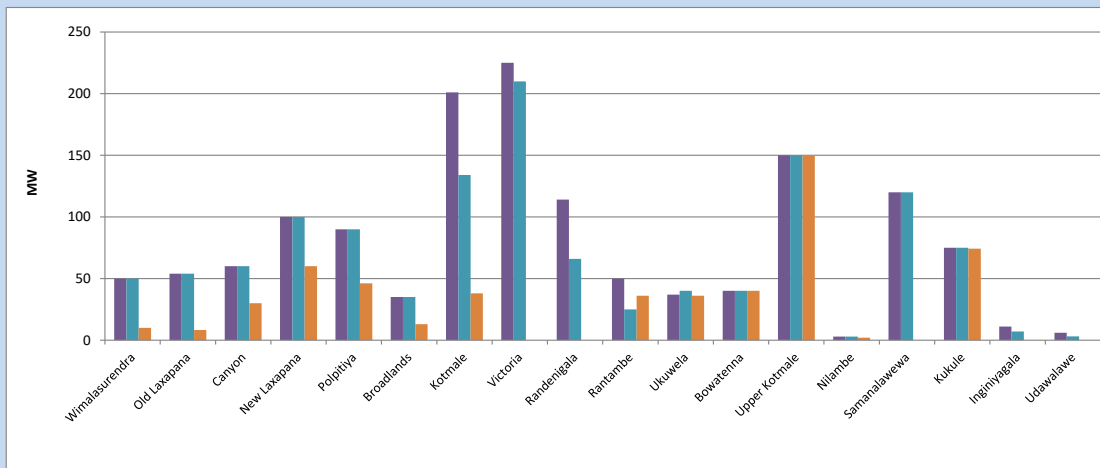


Available Generation is estimated based on plant availability at 6.00am on September 11, 2023  
Broadlands power plant is operating in the Commissioning Stage

September 11, 2023

### 8. Major Hydro Plant Loading at Night Peak

September 10, 2023



Plant availability is recorded at 6.00 am on September 11, 2023  
Broadlands power plant is operating in the Commissioning Stage

September 11, 2023

## 9. Summary of Major Plant performance

Table 05

Plant	Installed Capacity	Plant Availability	Night peak Load	Plant Dispatch
	(MW)	(MW)	(MW)	(MWh)
Wimalasurendra	50	50	10	24
Old Laxapana Canyon	54	54	8	199
New Laxapana	60	60	30	318
Polpitiya	100	100	60	1,189
Broadlands	90	90	46	750
Kotmale	35	35	13	261
Victoria	201	134	38	840
Randenigala	225	210	0	157
Rantambe	114	66	0	0
Ukuwela	50	25	36	29
Bowatenna	37	40	36	815
Upper Kotmale	40	40	40	175
Nilambe	150	150	150	488
Samanalawewa	3	3	2	6
Kukule	120	120	0	0
Inginiyagala	75	75	74	1,788
Udawalawe	11	7	0	0
Puttalam Coal I	6	3	0	0
Puttalam Coal II	270	200	198	4,724
Puttalam Coal III	270	270	271	6,091
KPS Small GTs	270	0	0	0
KPS GT 7	64	15	0	0
KCCP	115	114	0	0
Sapugaskanda A	161	153	147	3,464
Sapugaskanda B	70	50	0	0
Uthura Janani	70	63	63	1,179
Barge CEB	26	24	23	266
CEB-Hambantota	60	45	45	484
CEB-Mathugama	30	18	0	0
ACE Matara	20	13	0	0
Asia Power	24	24	24	166
KCCPS -2	50	0	0	0
West Coast	163	155	133	549
Nothern Power	270	270	141	942
ACE Embilipitiya	36	0	0	0
Total	93	86	50	185
	3,483	2,761	1,856	32,267

Plant availability is the availability recorded at 6 am on

September 11, 2023

10. Contribution to the Night Peak in MW

September 10, 2023

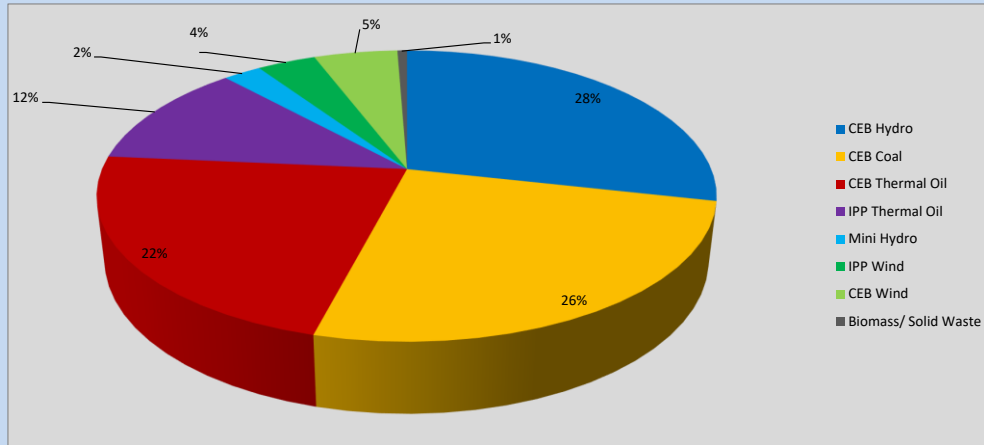


Table 06

CEB Hydro	523	MW
CEB Coal	469	MW
CEB Thermal Oil	411	MW
IPP Thermal Oil	215	MW
Mini Hydro (Telemetered)	43	MW
IPP Wind	67	MW
CEB Wind	95.6	MW
Biomass/ Solid Waste	11	MW

Recorded Peak Demand Data

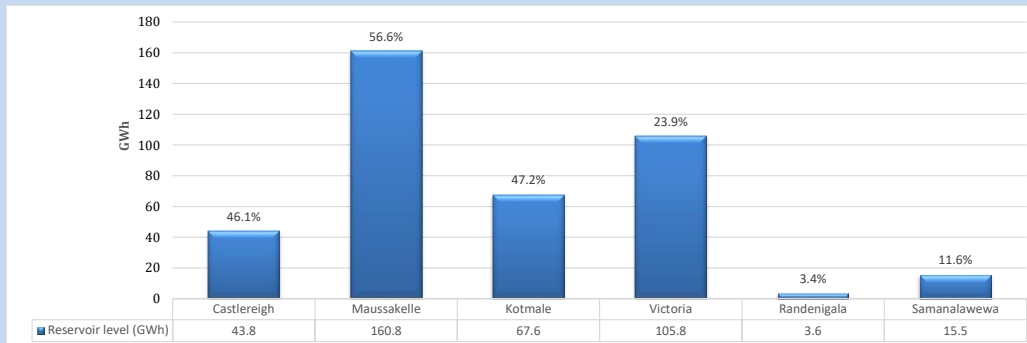
Table 07

Night Peak*	1,835	MW
Day Peak Maximum Demand	1,286	MW
Day Peak Minimum Demand	1,070	MW
Off Peak Minimum Demand	1,090	MW

Above figures are excluding contribution from roof top solar, non telemetered solar and mini hydro plants

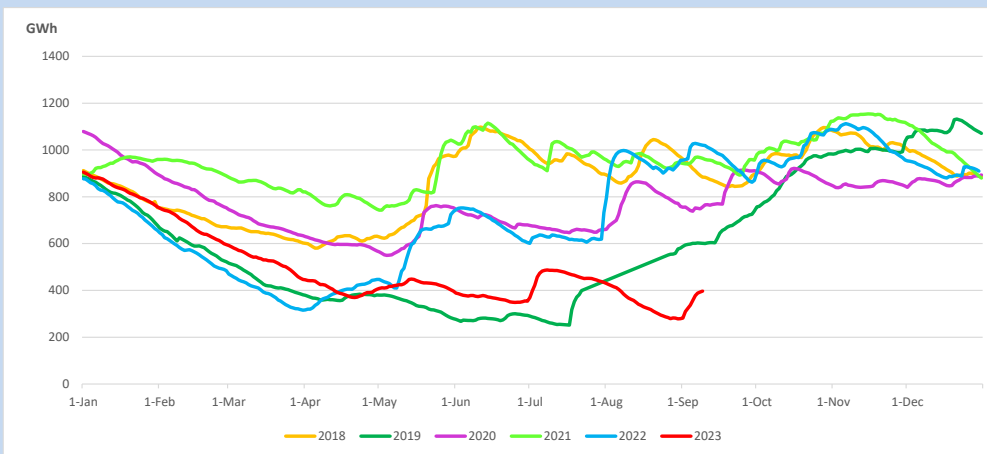
Reservoir Levels -

as at 06.00 Hr on September 11, 2023

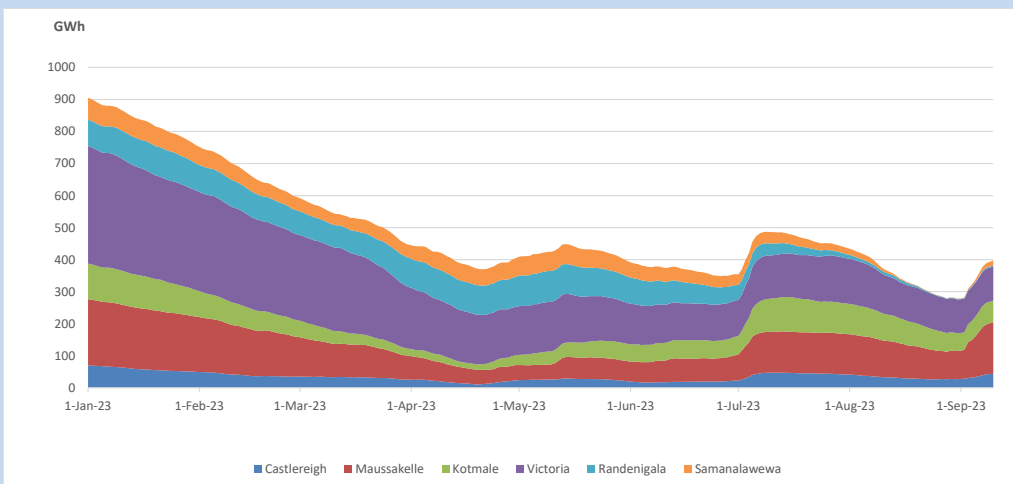


Total Reservoir Level 397.1 GWh  
 % of Total capacity 33.0%

### 11. Comparison of Total Reservoir Storage Levels with Past Years

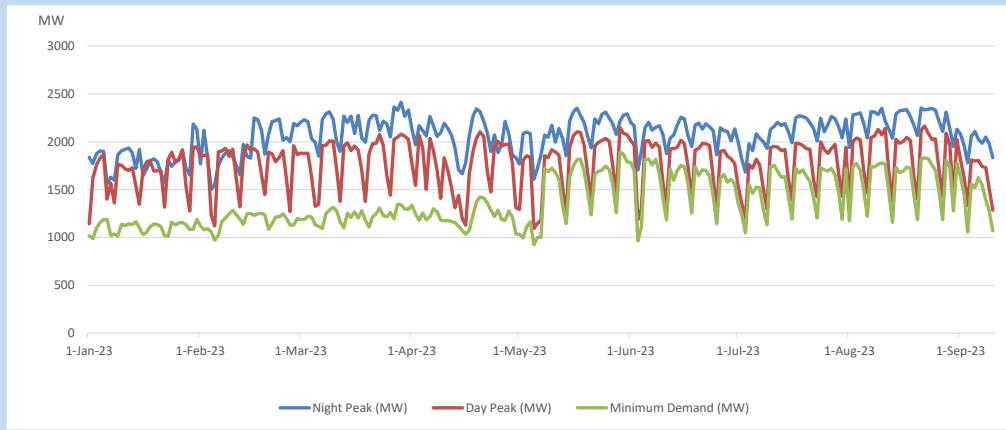


### 12. Variation of Major Hydro Reservoir Levels in the current year (GWh)





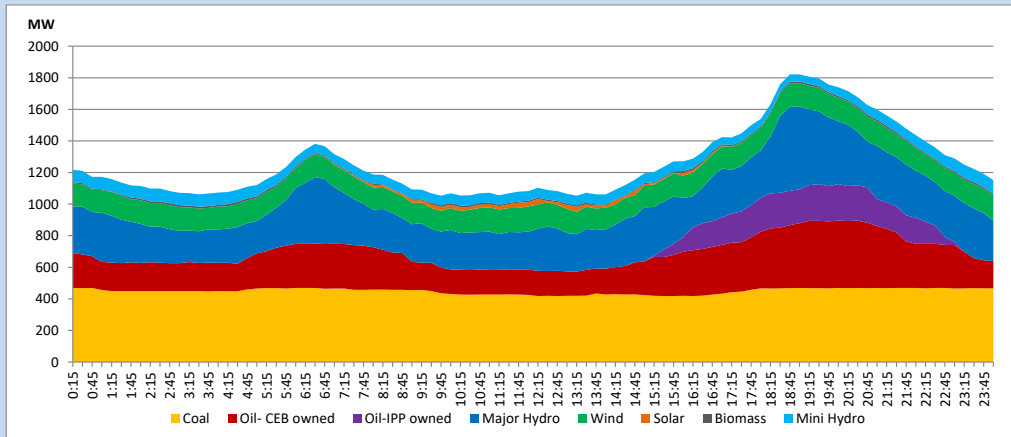
### 13. Variation of Demand during the current year



The above figures are excluding contribution from roof top solar, non telemetered solar and mini hydro plants

### 14. Daily Load Curve

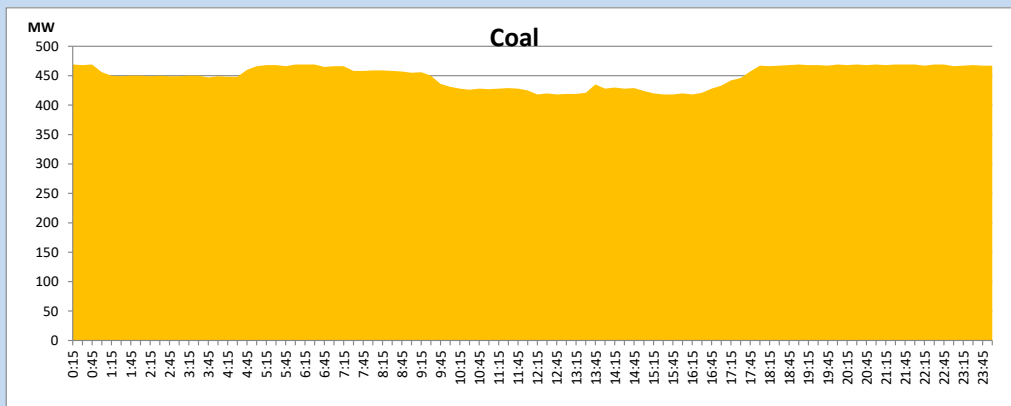
September 10, 2023



Solar and wind data is based on Telemetered Power Stations only

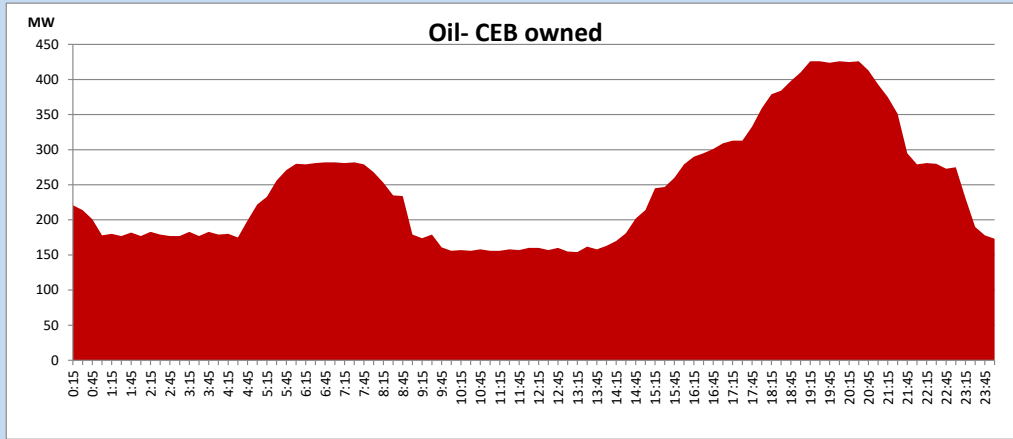
### Coal Generation during

September 10, 2023



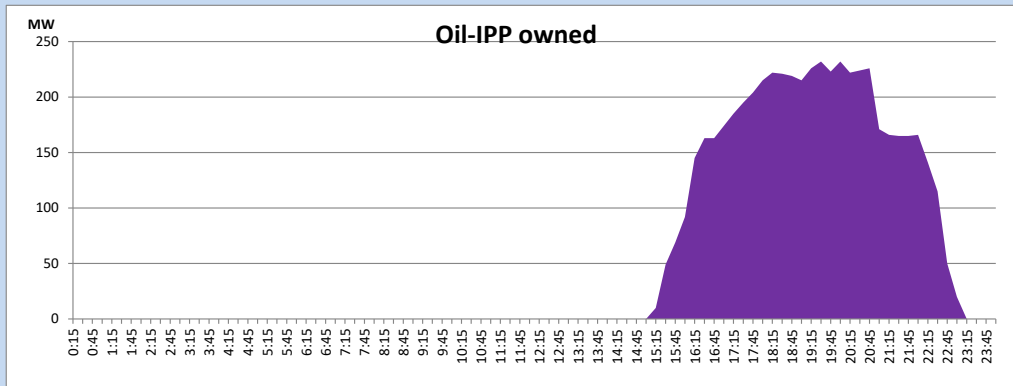
CEB Oil Plant Generation during

September 10, 2023



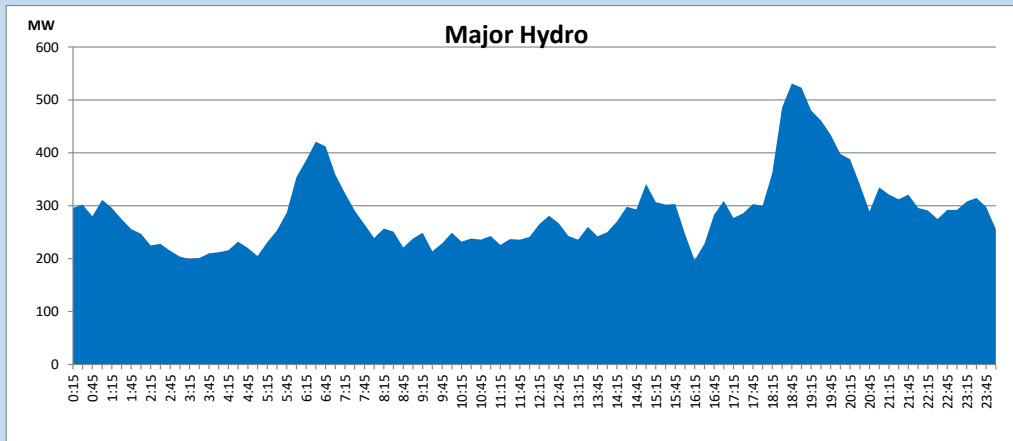
IPP Oil Plant Generation during

September 10, 2023



Major Hydro Generation during

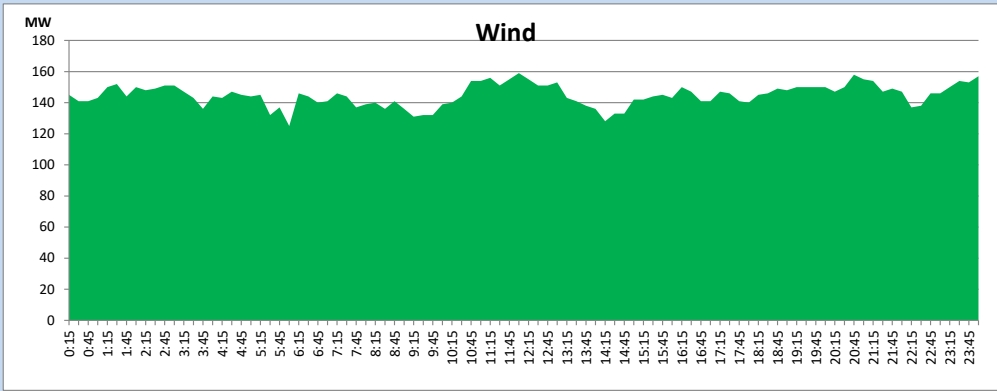
September 10, 2023



## Wind Generation during

September 10, 2023

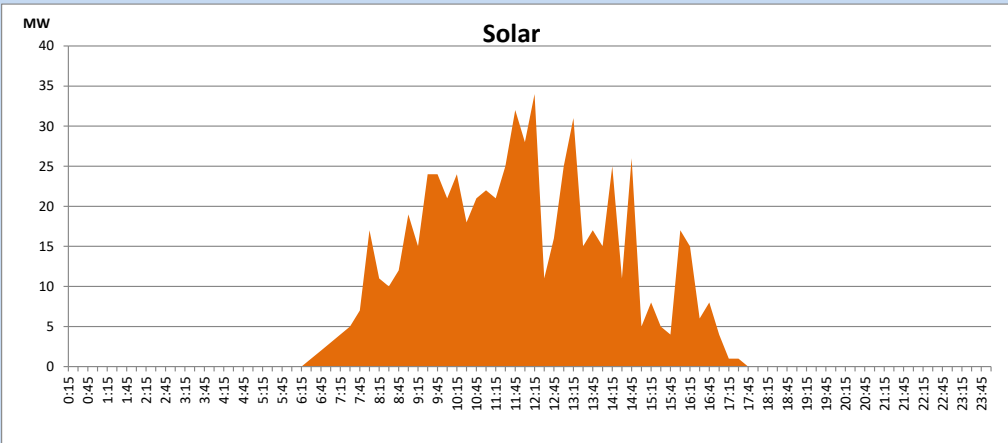
Based on Telemetered Power Stations only



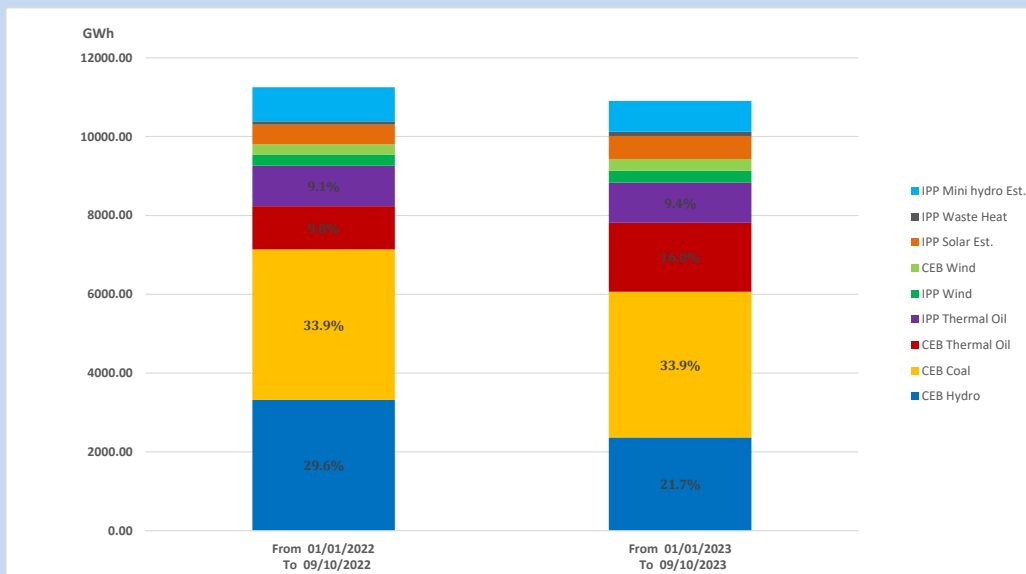
## Solar Generation during

September 10, 2023

Based on Telemetered Power Stations only



## 15. Cumulative Dispatch Comparison with Last Year



### Cumulative dispatch

From 01/01/2022 To 09/10/2022

11253 GWh

From 01/01/2023 To 09/10/2023

10907 GWh

The above figures are including contribution from roof top solar, non telemetered solar and mini hydro plants (figures have been adjusted based on the data from the CEB monthly review reports.)

Thermal Plant Fuel types

Table 08

Power Station	Primary Fuel
CEB Thermal	
Sapugaskanda 1	Heavy Fuel
Sapugaskanda 2	Heavy Fuel
Kelanitissa Small Gas Turbines	Auto Diesel
GT 7 - Kelanitissa	Auto Diesel
Kelanitissa CCY	Naphtha or Diesel
Lakvijaya 1	Coal
Lakvijaya 2	Coal
Lakvijaya 3	Coal
Uthuru Janani	Heavy Fuel
Barge CEB	Heavy Fuel
KCCPS -2	Auto Diesel

Power Station	Primary Fuel
Private Thermal	
West Coast	Auto Diesel / Heavy Fuel
ACE Matara	Heavy Fuel
ACE Embilipitiya	Heavy Fuel

Major Incidents reported during the day

September 10, 2023

- 1) Kukule pond spilling stopped at 7:30hrs and again started at 2:54hrs (11.09.2023) continues to the present hour.