

# Generation and Reservoirs Statistics

September 8, 2023



**PUBLIC UTILITIES COMMISSION OF SRI LANKA**

## 1. Daily Generation Mix in MWh

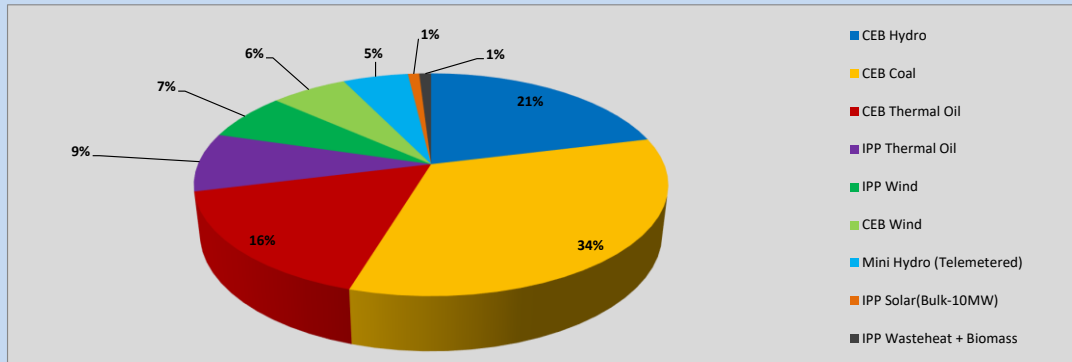


Table 01

	Generation (MWh)
CEB Hydro	7,750
CEB Coal	12,294
CEB Thermal Oil	6,028
IPP Thermal Oil	3,123
IPP Wind	2,546
CEB Wind	2,281
Mini Hydro (Telemetered)	1,955
IPP Solar (Bulk)	338
IPP Waste heat + Biomass	355
<b>Total Generation (Excluding estimated figures)</b>	<b>36,670</b>
* Estimated unserved energy	0
* Estimated Mini Hydro (Non telemetered)	1685
* Estimated IPP Solar PV (Bulk 1-10MW)	304
* Estimated Solar Roof Top PV	1660
<b>Total Generation (Including estimated figures)</b>	<b>40,319</b>

\* Estimated figures of CEB generation report

Table 02

	Installed Capacity (MW)
CEB Hydro	1409
CEB Coal	810
CEB Thermal Oil	781
IPP Thermal Oil (West Coast, ACE Matara and ACE Embilipitiya)	387
IPP Wind	148
CEB Wind	100
Mini Hydro	416
IPP Waste heat + Biomass	50
IPP Solar	130
Rooftop Solar* (Ordinary)	267
Rooftop Solar* (LT Bulk)	256
Rooftop Solar* (HT Bulk)	61

Data Source - Monthly Review Report [May-2023]

## 2. Cumulative Dispatch

Following data excludes the contribution from roof top solar, non telemetered solar and mini hydro plants

Table 03 - Current Month

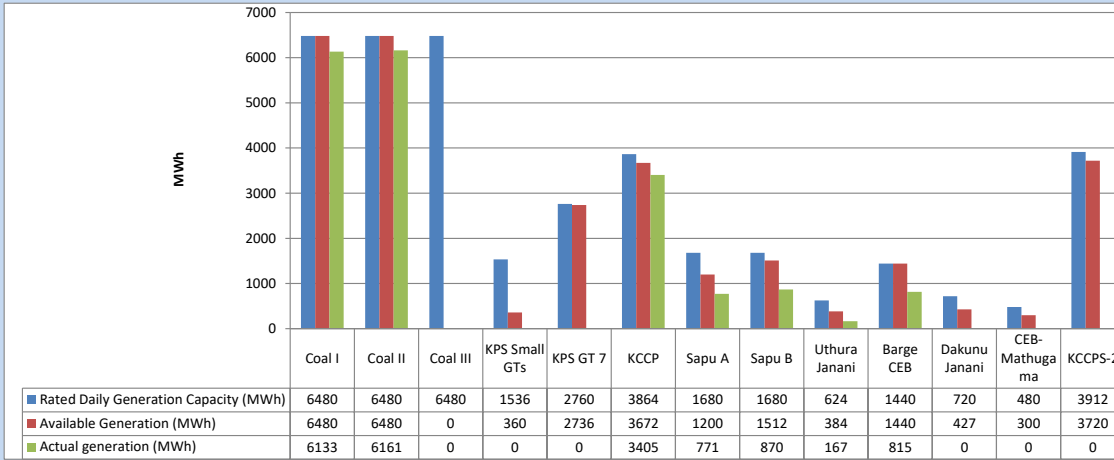
Category	Dispatch (GWh)	
CEB Hydro	61	20.72%
CEB Coal	99	33.24%
CEB Thermal Oil	54	18.13%
IPP Thermal	30	9.95%
SPP Wind	19	6.46%
CEB Wind	17	5.87%
Mini Hydro (Telemetered)	12	4.10%
IPP Solar(Bulk-10MW)	2	0.63%
IPP Waste heat + BMP	3	0.89%
<b>Total</b>	<b>297</b>	

Table 04 - Current Year

Category	Dispatch (GWh)	
CEB Hydro	2,360	24.19%
CEB Coal	3,683	37.75%
CEB Thermal Oil	1,739	17.82%
IPP Thermal	1,020	10.45%
SPP Wind	279	2.86%
CEB Wind	287	2.94%
Mini Hydro (Telemetered)	222	2.28%
IPP Solar(Bulk-10MW)	76	0.78%
IPP Waste heat	90	0.92%
<b>Total</b>	<b>9,757</b>	

### 3. CEB owned Thermal Plant Dispatch

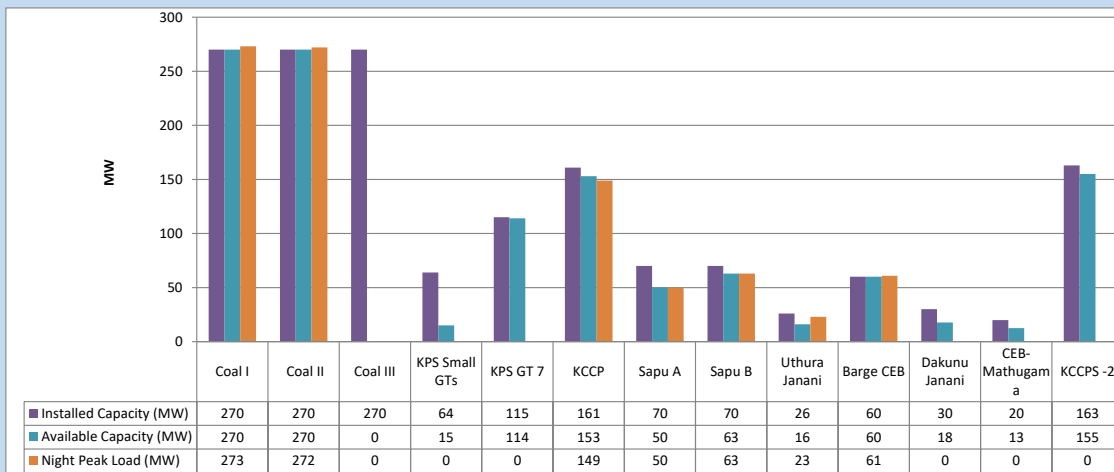
September 8, 2023



Available Generation is estimated based on plant availability at 6.00am on

September 9, 2023

### 4. CEB owned Thermal Plant Loading at the Night Peak

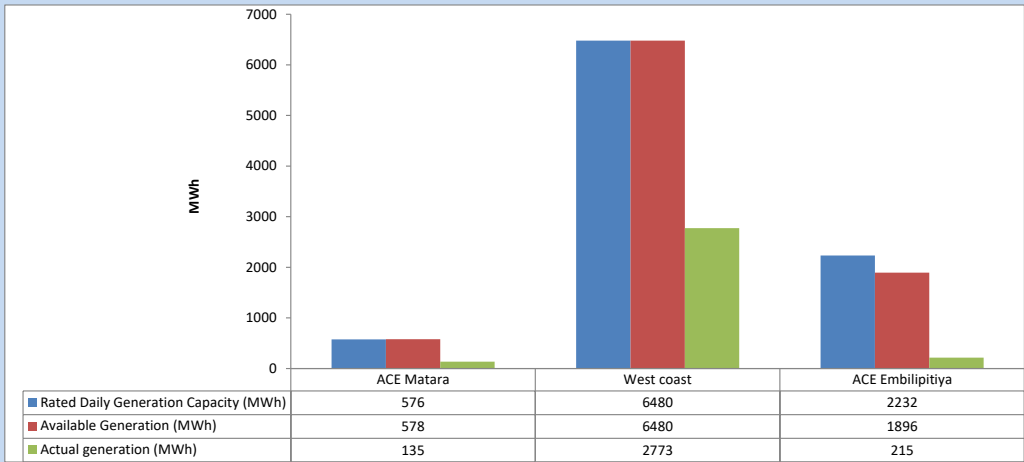


Plant availability is recorded at 6.00 am on

September 9, 2023

5. IPP owned Thermal Plant Dispatch

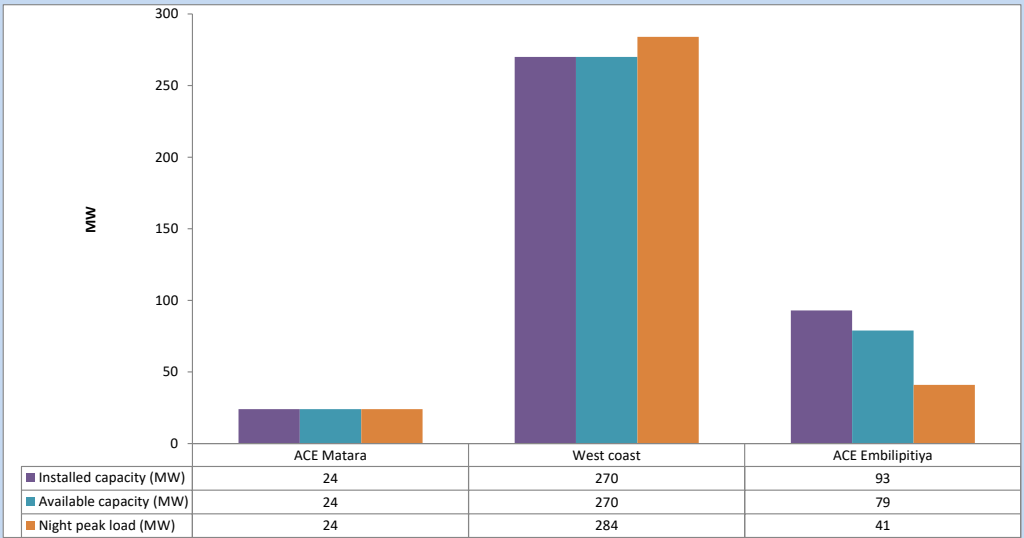
September 8, 2023



Available Generation is estimated based on plant availability at 6.00am on

September 9, 2023

6. IPP owned Thermal Plant Loading at the Night Peak

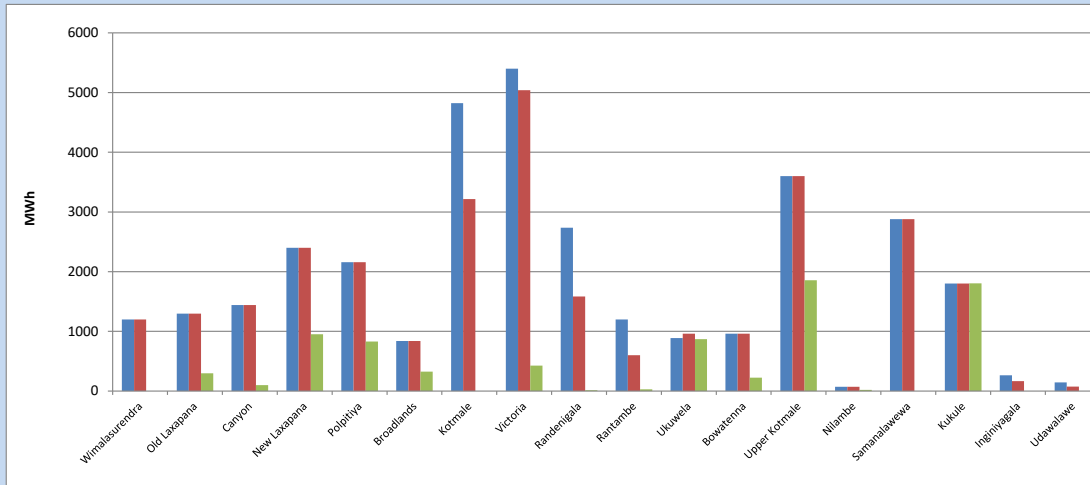


Plant availability is recorded at 6.00 am on

September 9, 2023

### 7. Major Hydro Plant Dispatch

September 8, 2023

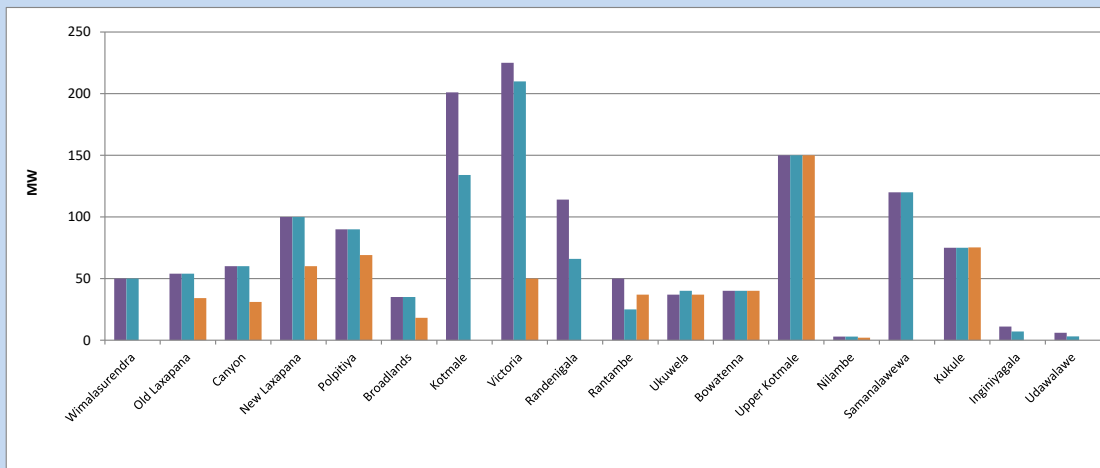


Available Generation is estimated based on plant availability at 6.00am on September 9, 2023  
Broadlands power plant is operating in the Commissioning Stage

September 9, 2023

### 8. Major Hydro Plant Loading at Night Peak

September 8, 2023



Plant availability is recorded at 6.00 am on September 9, 2023  
Broadlands power plant is operating in the Commissioning Stage

September 9, 2023

## 9. Summary of Major Plant performance

Table 05

Plant	Installed Capacity	Plant Availability	Night peak Load	Plant Dispatch
	(MW)	(MW)	(MW)	(MWh)
Wimalasurendra	50	50	0	0
Old Laxapana	54	54	34	299
Canyon	60	60	31	100
New Laxapana	100	100	60	953
Polpitiya	90	90	69	830
Broadlands	35	35	18	324
Kotmale	201	134	0	0
Victoria	225	210	50	426
Randenigala	114	66	0	14
Rantambe	50	25	37	29
Ukuwela	37	40	37	869
Bowatenna	40	40	40	225
Upper Kotmale	150	150	150	1,855
Nilambe	3	3	2	21
Samanalawewa	120	120	0	0
Kukule	75	75	75	1,805
Inginiyagala	11	7	0	0
Udawalawe	6	3	0	0
Puttalam Coal I	270	270	273	6,133
Puttalam Coal II	270	270	272	6,161
Puttalam Coal III	270	0	0	0
KPS Small GTs	64	15	0	0
KPS GT 7	115	114	0	0
KCCP	161	153	149	3,405
Sapugaskanda A	70	50	50	771
Sapugaskanda B	70	63	63	870
Uthura Janani	26	16	23	167
Barge CEB	60	60	61	815
CEB-Hambantota	30	18	0	0
CEB-Mathugama	20	13	0	0
ACE Matara	24	24	24	135
Asia Power	50	0	0	0
KCCPS -2	163	155	0	0
West Coast	270	270	284	2,773
Nothern Power	36	0	0	0
ACE Embilipitiya	93	79	41	215
<b>Total</b>	<b>3,483</b>	<b>2,832</b>	<b>2,073</b>	<b>36,670</b>

Plant availability is the availability recorded at 6 am on

September 9, 2023

### 10. Contribution to the Night Peak in MW

September 8, 2023

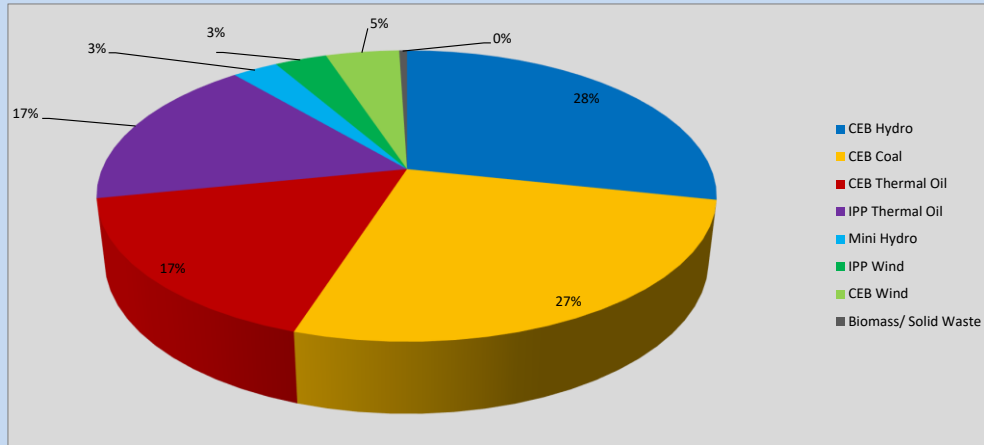


Table 06

CEB Hydro	582	MW
CEB Coal	545	MW
CEB Thermal Oil	346	MW
IPP Thermal Oil	349	MW
Mini Hydro (Telemetered)	58	MW
IPP Wind	66.8	MW
CEB Wind	94	MW
Biomass/ Solid Waste	10	MW

### Recorded Peak Demand Data

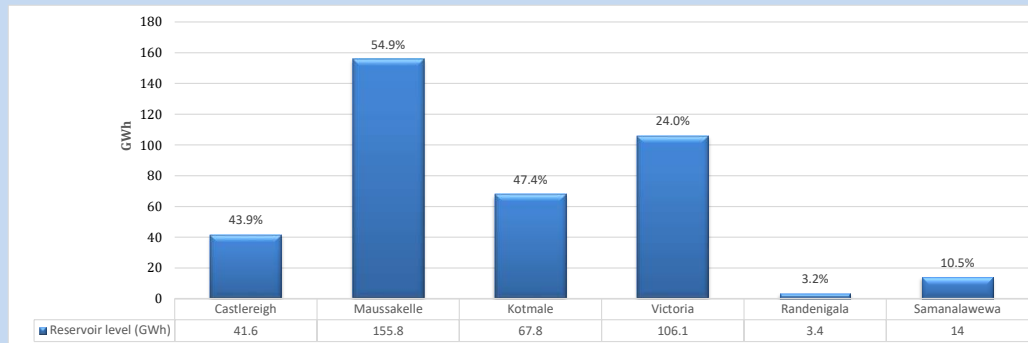
Table 07

Night Peak*	2,051	MW
Day Peak Maximum Demand	1,731	MW
Day Peak Minimum Demand	1,397	MW
Off Peak Minimum Demand	1,049	MW

Above figures are excluding contribution from roof top solar, non telemetered solar and mini hydro plants

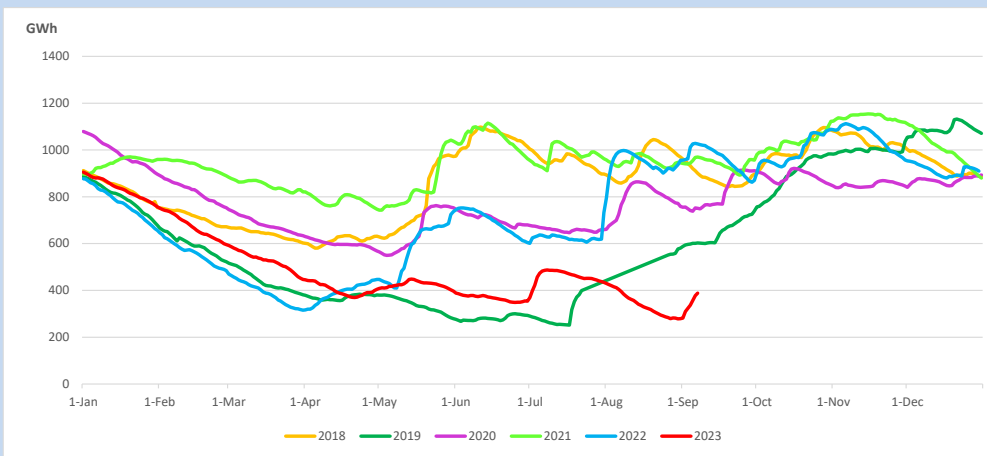
### Reservoir Levels -

as at 06.00 Hr on September 9, 2023

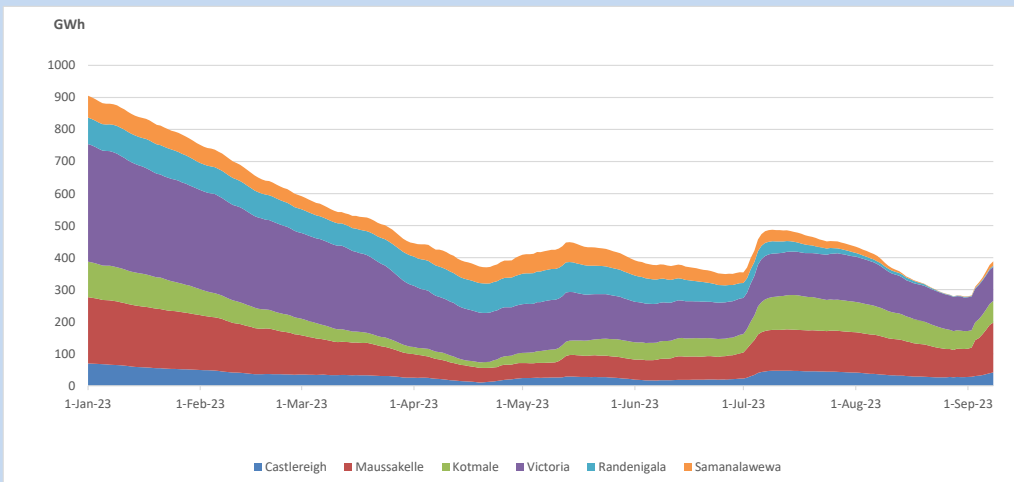


Total Reservoir Level 388.7 GWh  
 % of Total capacity 32.3%

### 11. Comparison of Total Reservoir Storage Levels with Past Years

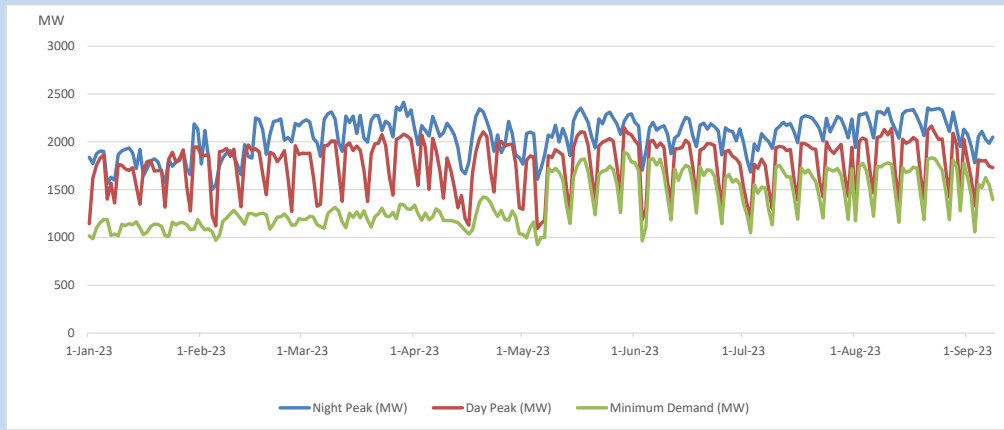


### 12. Variation of Major Hydro Reservoir Levels in the current year (GWh)





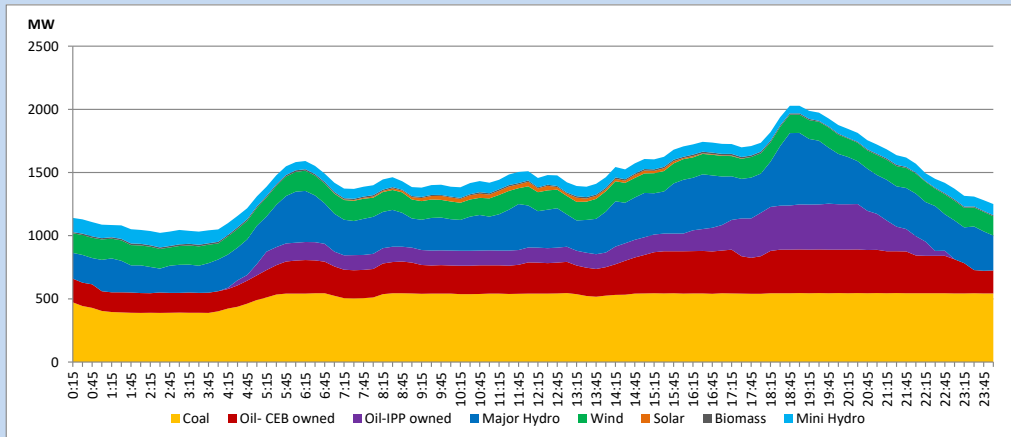
### 13. Variation of Demand during the current year



The above figures are excluding contribution from roof top solar, non telemetered solar and mini hydro plants

### 14. Daily Load Curve

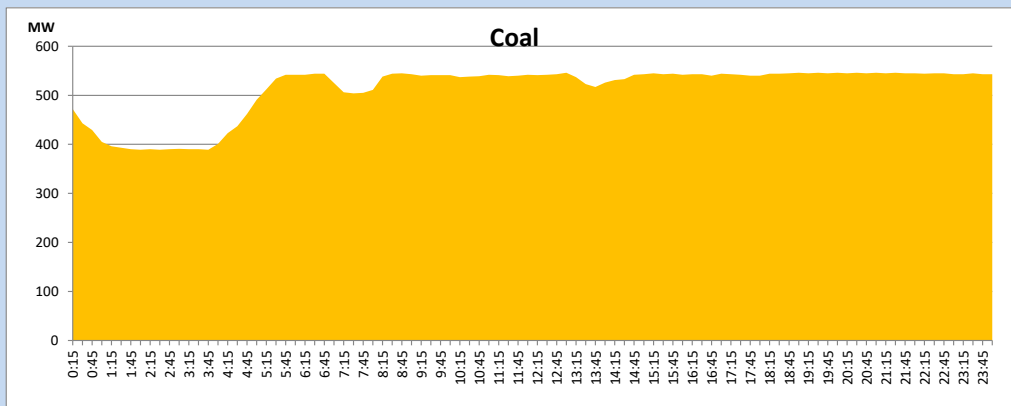
September 8, 2023



Solar and wind data is based on Telemetered Power Stations only

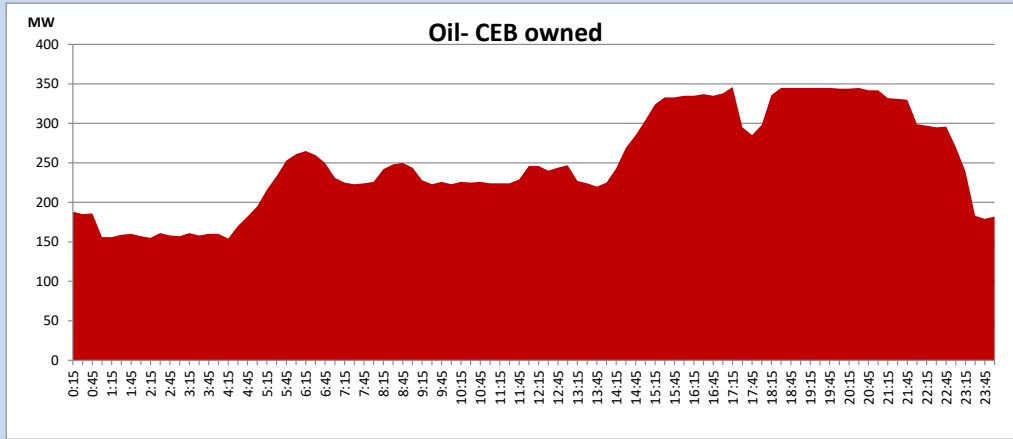
### Coal Generation during

September 8, 2023



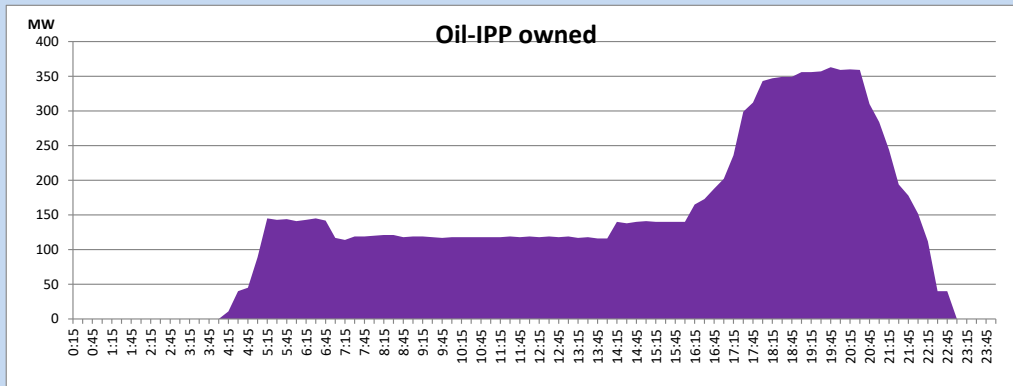
CEB Oil Plant Generation during

September 8, 2023



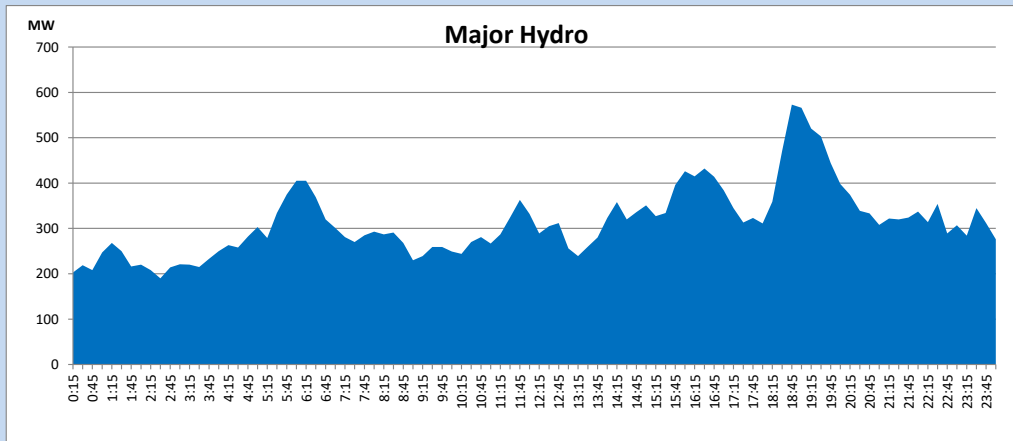
IPP Oil Plant Generation during

September 8, 2023



Major Hydro Generation during

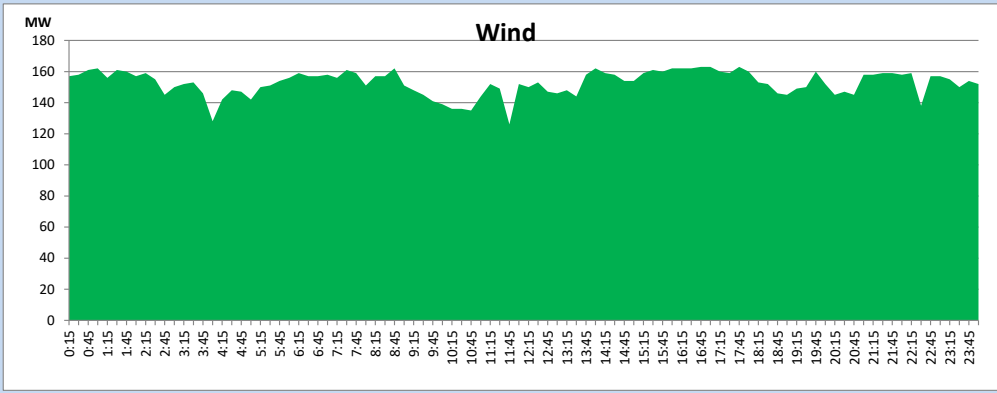
September 8, 2023



## Wind Generation during

September 8, 2023

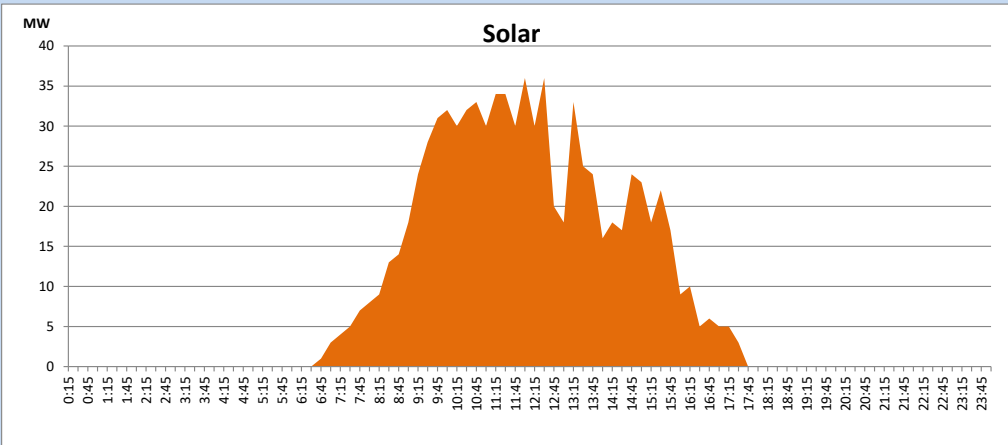
Based on Telemetered Power Stations only



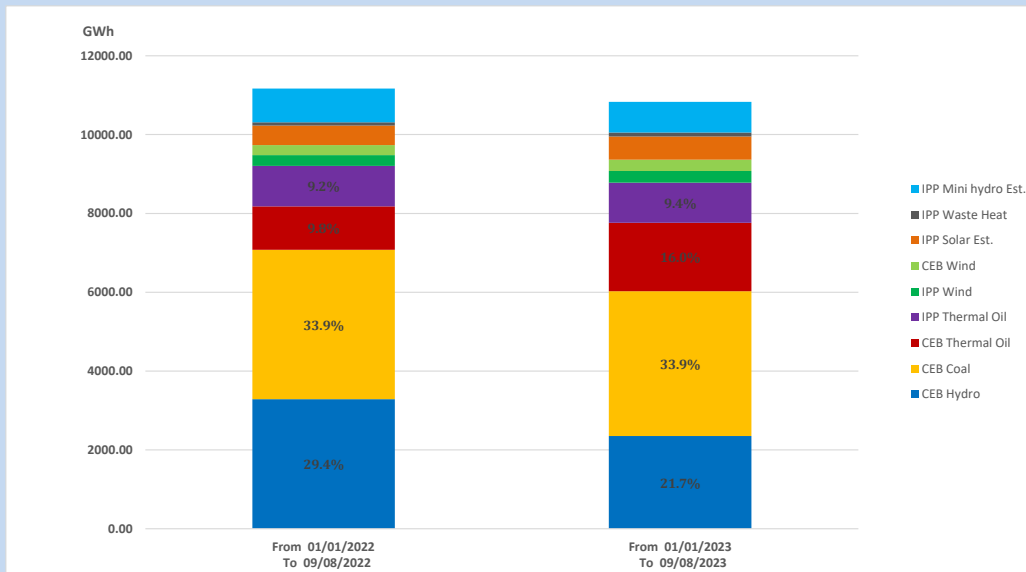
## Solar Generation during

September 8, 2023

Based on Telemetered Power Stations only



## 15. Cumulative Dispatch Comparison with Last Year



### Cumulative dispatch

From 01/01/2022 To 09/08/2022

11170 GWh

From 01/01/2023 To 09/08/2023

10831 GWh

The above figures are including contribution from roof top solar, non telemetered solar and mini hydro plants (figures have been adjusted based on the data from the CEB monthly review reports.)

Thermal Plant Fuel types

Table 08

Power Station	Primary Fuel
CEB Thermal	
Sapugaskanda 1	Heavy Fuel
Sapugaskanda 2	Heavy Fuel
Kelanitissa Small Gas Turbines	Auto Diesel
GT 7 - Kelanitissa	Auto Diesel
Kelanitissa CCY	Naphtha or Diesel
Lakvijaya 1	Coal
Lakvijaya 2	Coal
Lakvijaya 3	Coal
Uthuru Janani	Heavy Fuel
Barge CEB	Heavy Fuel
KCCPS -2	Auto Diesel

Power Station	Primary Fuel
Private Thermal	
West Coast	Auto Diesel / Heavy Fuel
ACE Matara	Heavy Fuel
ACE Embilipitiya	Heavy Fuel

Major Incidents reported during the day

September 8, 2023

- 1) Kukule pond spilling continues to the present hour.
- 2) Kolonnawa - Pannipitiya - Sri jayawardenapura 132kV cct 01 tripped from Kolonnawa and Sri Jayawardenapura ends (cct was switched off from Pannipitiya end for system requirement) at 23:23hrs, due to operation of Distance protection. Kolonnawa - Pannipitiya - Sri jayawardenapura 132kV cct 01 is yet to be restored.