

Generation and Reservoirs Statistics

September 7, 2023



PUBLIC UTILITIES COMMISSION OF SRI LANKA

1. Daily Generation Mix in MWh

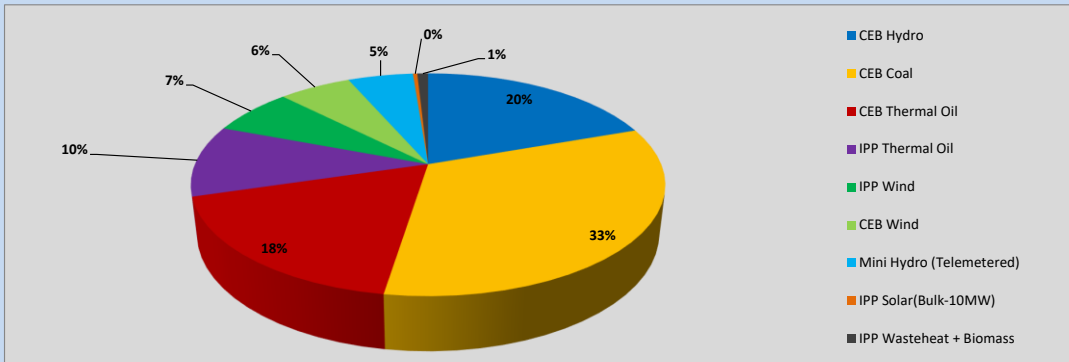


Table 01

	Generation (MWh)
CEB Hydro	7,464
CEB Coal	12,512
CEB Thermal Oil	6,810
IPP Thermal Oil	3,951
IPP Wind	2,583
CEB Wind	2,245
Mini Hydro (Telemetered)	2,022
IPP Solar (Bulk)	135
IPP Waste heat + Biomass	335
Total Generation (Excluding estimated figures)	38,057
* Estimated unserved energy	0
* Estimated Mini Hydro (Non telemetered)	1618
* Estimated IPP Solar PV (Bulk 1-10MW)	304
* Estimated Solar Roof Top PV	1650
Total Generation (Including estimated figures)	41,629

* Estimated figures of CEB generation report

Table 02

	Installed Capacity (MW)
CEB Hydro	1409
CEB Coal	810
CEB Thermal Oil	781
IPP Thermal Oil (West Coast, ACE Matara and ACE Embilipitiya)	387
IPP Wind	148
CEB Wind	100
Mini Hydro	416
IPP Waste heat + Biomass	50
IPP Solar	130
Rooftop Solar* (Ordinary)	267
Rooftop Solar* (LT Bulk)	256
Rooftop Solar* (HT Bulk)	61

Data Source - Monthly Review Report [May-2023]

2. Cumulative Dispatch

Following data excludes the contribution from roof top solar, non telemetered solar and mini hydro plants

Table 03 - Current Month

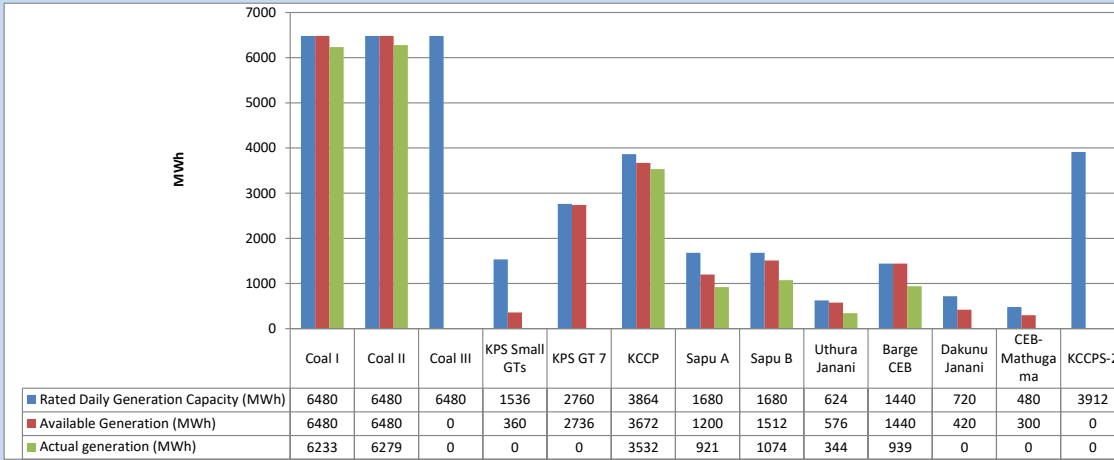
Category	Dispatch (GWh)	
CEB Hydro	54	20.66%
CEB Coal	86	33.21%
CEB Thermal Oil	48	18.37%
IPP Thermal	26	10.16%
SPP Wind	17	6.39%
CEB Wind	15	5.82%
Mini Hydro (Telemetered)	10	3.92%
IPP Solar(Bulk-10MW)	2	0.59%
IPP Waste heat + BMP	2	0.88%
Total	260	

Table 04 - Current Year

Category	Dispatch (GWh)	
CEB Hydro	2,353	24.20%
CEB Coal	3,671	37.76%
CEB Thermal Oil	1,733	17.83%
IPP Thermal	1,016	10.46%
SPP Wind	277	2.85%
CEB Wind	284	2.92%
Mini Hydro (Telemetered)	220	2.27%
IPP Solar(Bulk-10MW)	76	0.78%
IPP Waste heat	90	0.92%
Total	9,720	

3. CEB owned Thermal Plant Dispatch

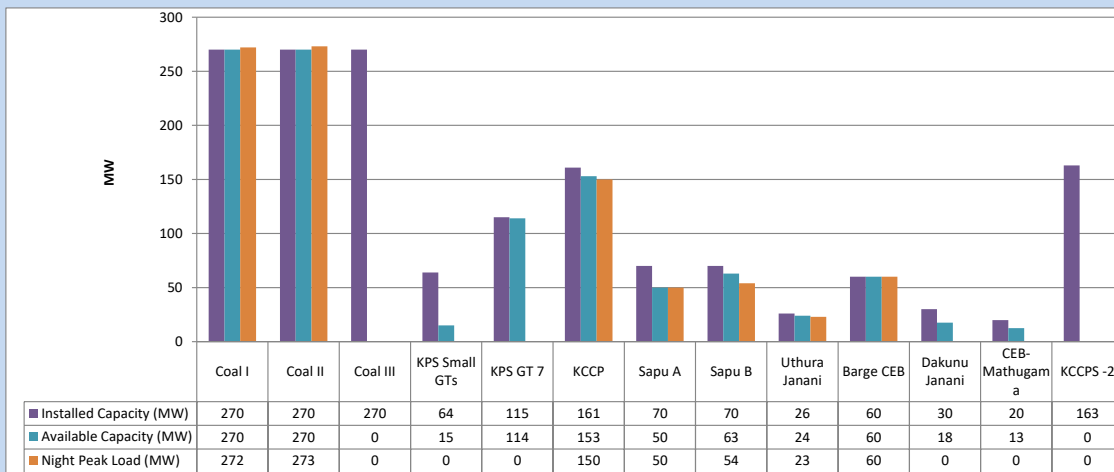
September 7, 2023



Available Generation is estimated based on plant availability at 6.00am on

September 8, 2023

4. CEB owned Thermal Plant Loading at the Night Peak

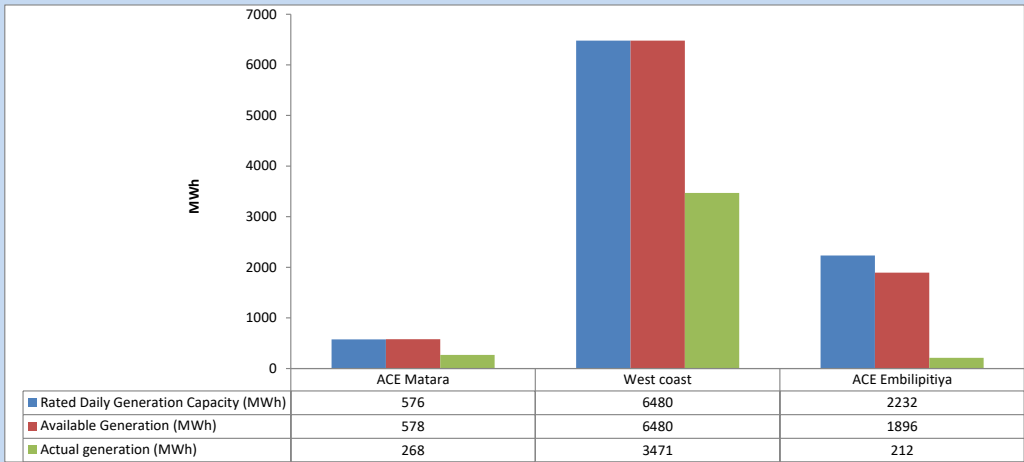


Plant availability is recorded at 6.00 am on

September 8, 2023

5. IPP owned Thermal Plant Dispatch

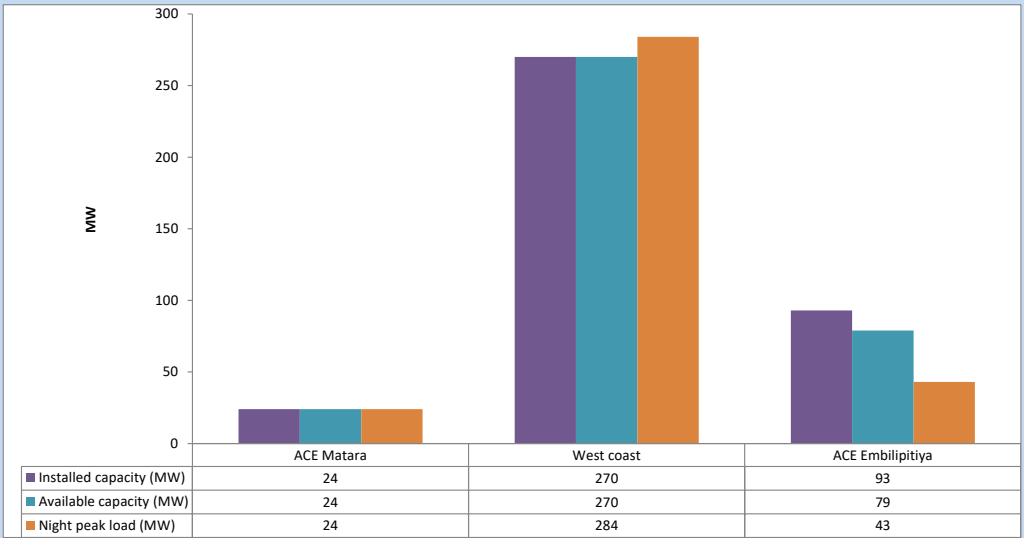
September 7, 2023



Available Generation is estimated based on plant availability at 6.00am on

September 8, 2023

6. IPP owned Thermal Plant Loading at the Night Peak

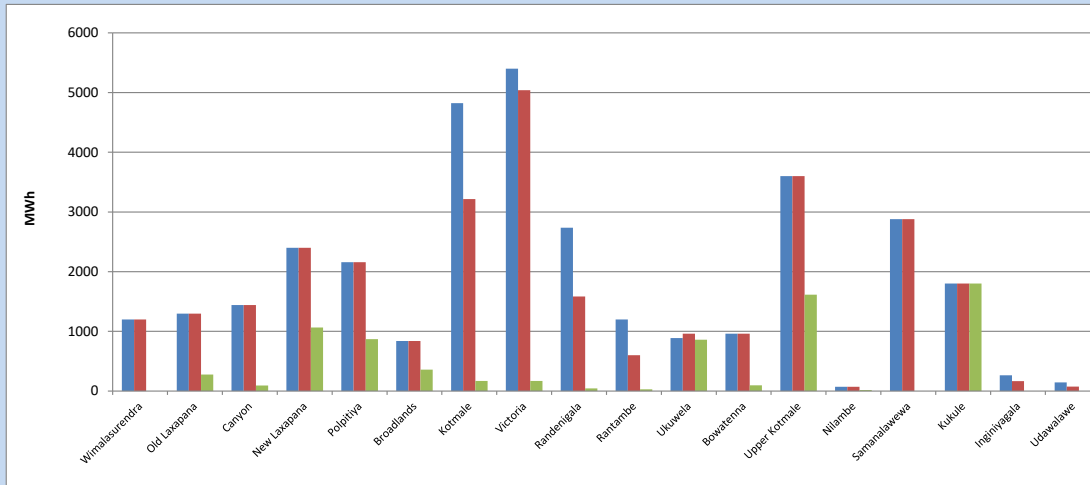


Plant availability is recorded at 6.00 am on

September 8, 2023

7. Major Hydro Plant Dispatch

September 7, 2023

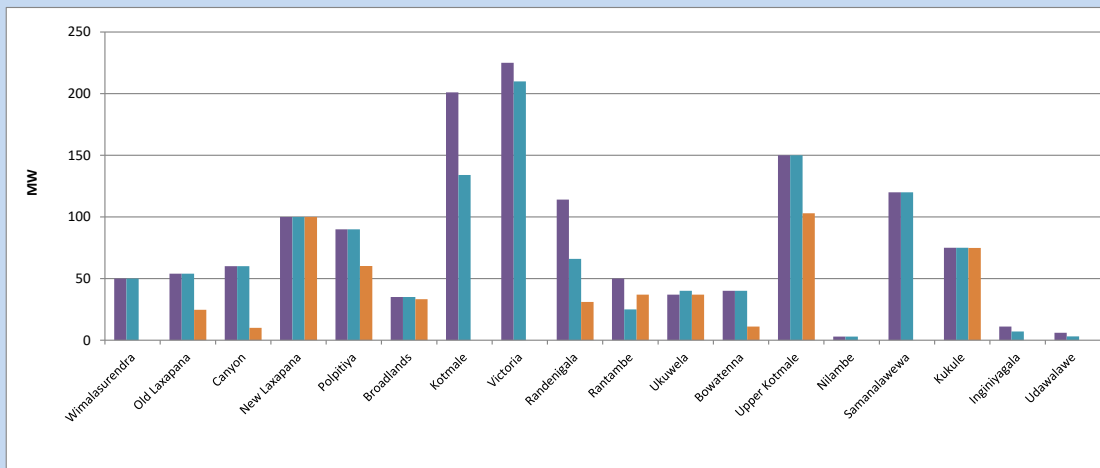


Available Generation is estimated based on plant availability at 6.00am on September 8, 2023
Broadlands power plant is operating in the Commissioning Stage

September 8, 2023

8. Major Hydro Plant Loading at Night Peak

September 7, 2023



Plant availability is recorded at 6.00 am on September 8, 2023
Broadlands power plant is operating in the Commissioning Stage

9. Summary of Major Plant performance

Table 05

Plant	Installed Capacity	Plant Availability	Night peak Load	Plant Dispatch
	(MW)	(MW)	(MW)	(MWh)
Wimalasurendra	50	50	0	0
Old Laxapana	54	54	25	278
Canyon	60	60	10	92
New Laxapana	100	100	100	1,064
Polpitiya	90	90	60	870
Broadlands	35	35	33	358
Kotmale	201	134	0	170
Victoria	225	210	0	170
Randenigala	114	66	31	44
Rantambe	50	25	37	30
Ukuwela	37	40	37	859
Bowatenna	40	40	11	95
Upper Kotmale	150	150	103	1,616
Nilambe	3	3	0	18
Samanalawewa	120	120	0	0
Kukule	75	75	75	1,800
Inginiyagala	11	7	0	0
Udawalawe	6	3	0	0
Puttalam Coal I	270	270	272	6,233
Puttalam Coal II	270	270	273	6,279
Puttalam Coal III	270	0	0	0
KPS Small GTs	64	15	0	0
KPS GT 7	115	114	0	0
KCCP	161	153	150	3,532
Sapugaskanda A	70	50	50	921
Sapugaskanda B	70	63	54	1,074
Uthura Janani	26	24	23	344
Barge CEB	60	60	60	939
CEB-Hambantota	30	18	0	0
CEB-Mathugama	20	13	0	0
ACE Matara	24	24	24	268
Asia Power	50	0	0	0
KCCPS -2	163	0	0	0
West Coast	270	270	284	3,471
Nothern Power	36	0	0	0
ACE Embilipitiya	93	79	43	212
Total	3,483	2,684	2,008	38,057

Plant availability is the availability recorded at 6 am on

September 8, 2023

10. Contribution to the Night Peak in MW

September 7, 2023

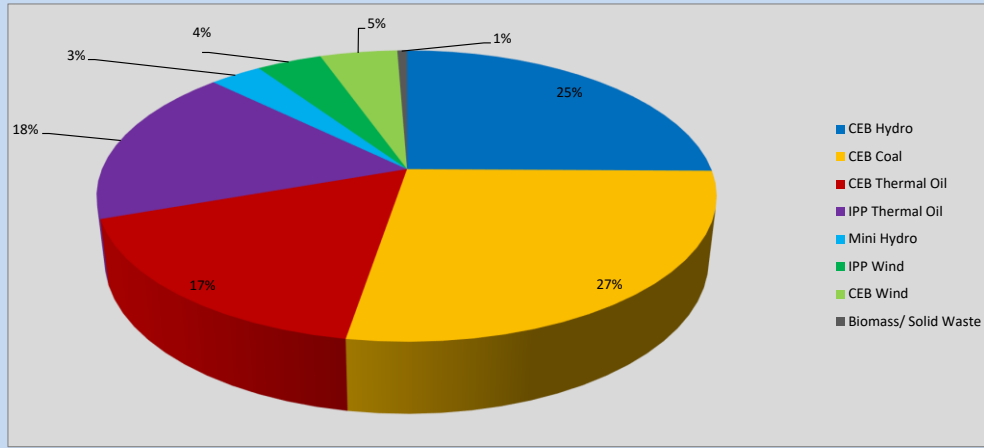


Table 06

CEB Hydro	500	MW
CEB Coal	545	MW
CEB Thermal Oil	337	MW
IPP Thermal Oil	351	MW
Mini Hydro (Telemetered)	64	MW
IPP Wind	80.8	MW
CEB Wind	95.7	MW
Biomass/ Solid Waste	12	MW

Recorded Peak Demand Data

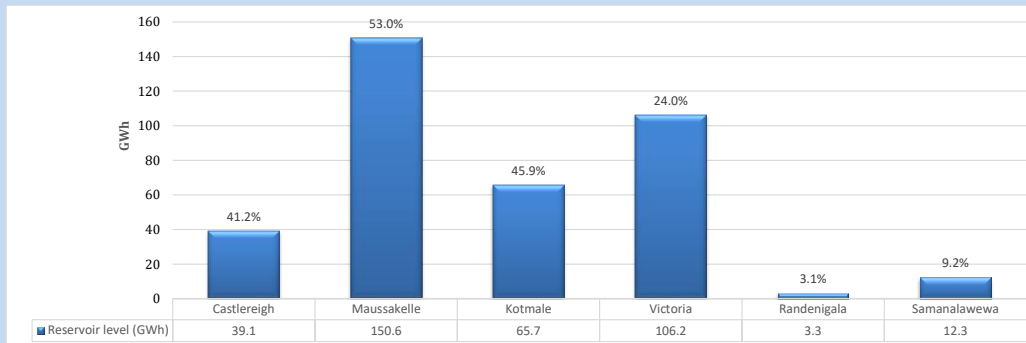
Table 07

Night Peak*	1,986	MW
Day Peak Maximum Demand	1,743	MW
Day Peak Minimum Demand	1,550	MW
Off Peak Minimum Demand	1,106	MW

Above figures are excluding contribution from roof top solar, non telemetered solar and mini hydro plants

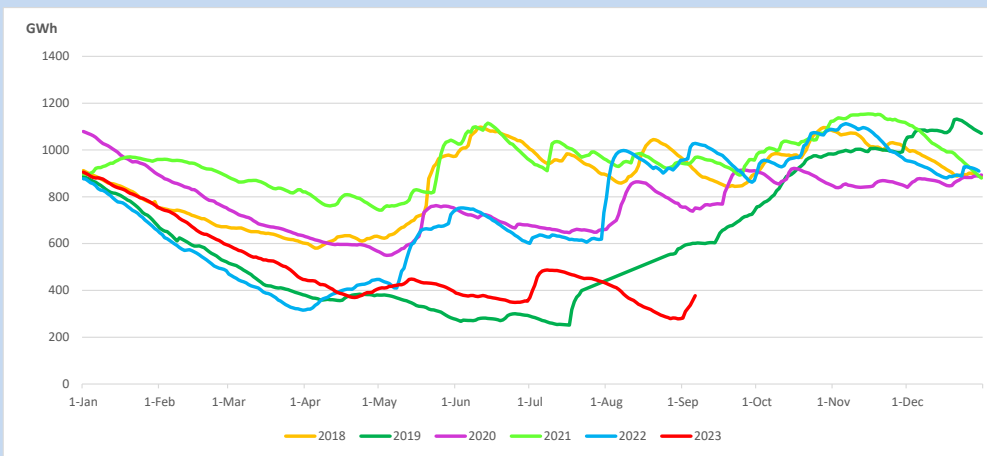
Reservoir Levels -

as at 06.00 Hr on September 8, 2023

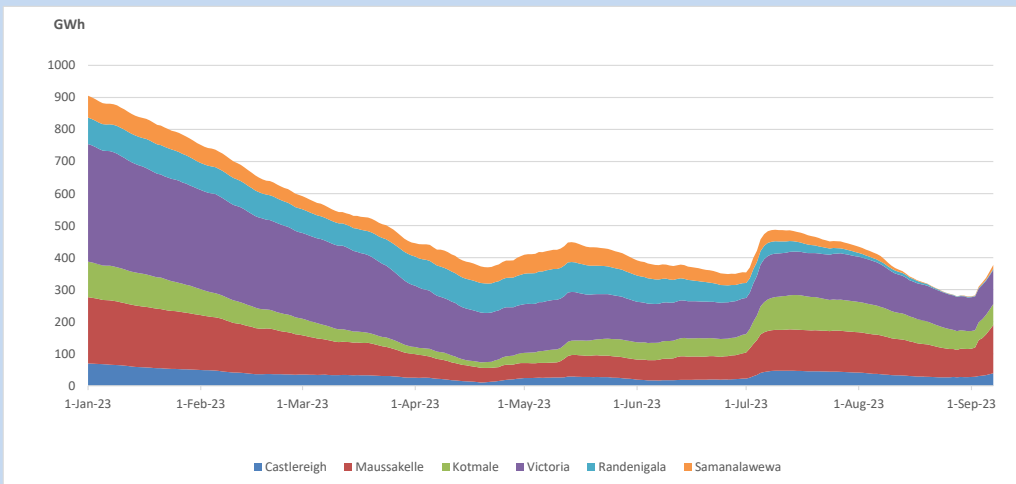


Total Reservoir Level 377.2 GWh
 % of Total capacity 31.3%

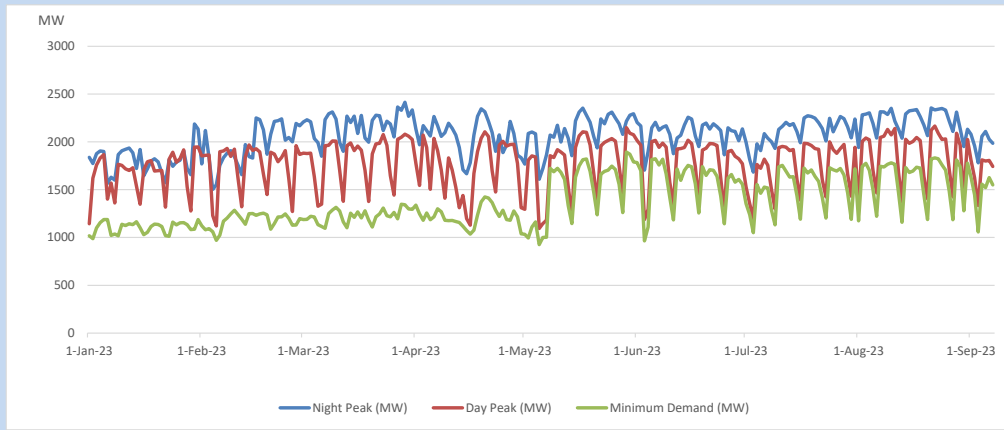
11. Comparison of Total Reservoir Storage Levels with Past Years



12. Variation of Major Hydro Reservoir Levels in the current year (GWh)



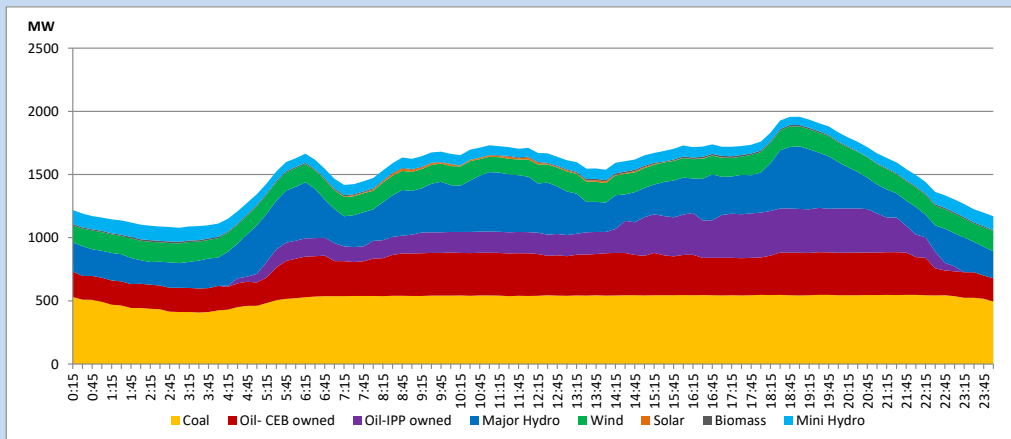
13. Variation of Demand during the current year



The above figures are excluding contribution from roof top solar, non telemetered solar and mini hydro plants

14. Daily Load Curve

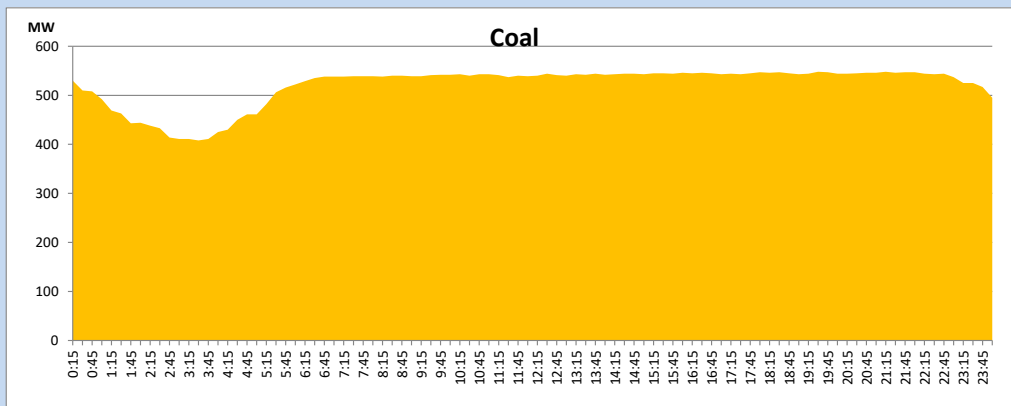
September 7, 2023



Solar and wind data is based on Telemetered Power Stations only

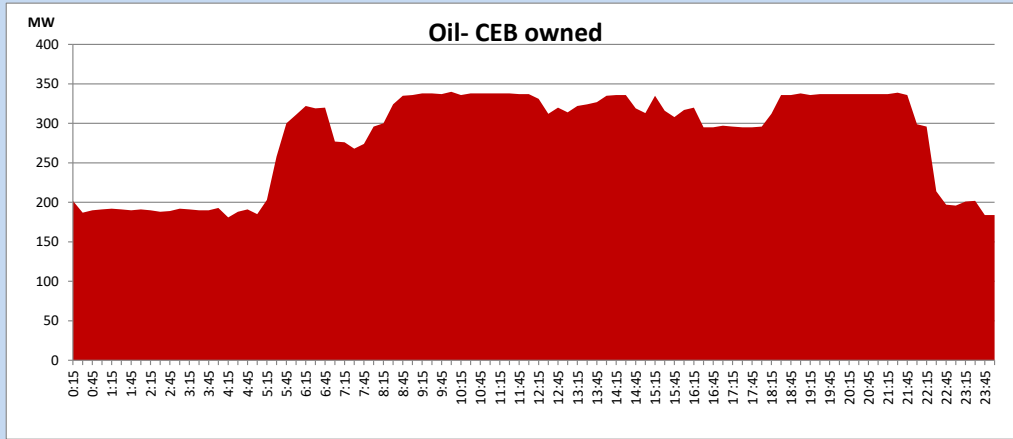
Coal Generation during

September 7, 2023



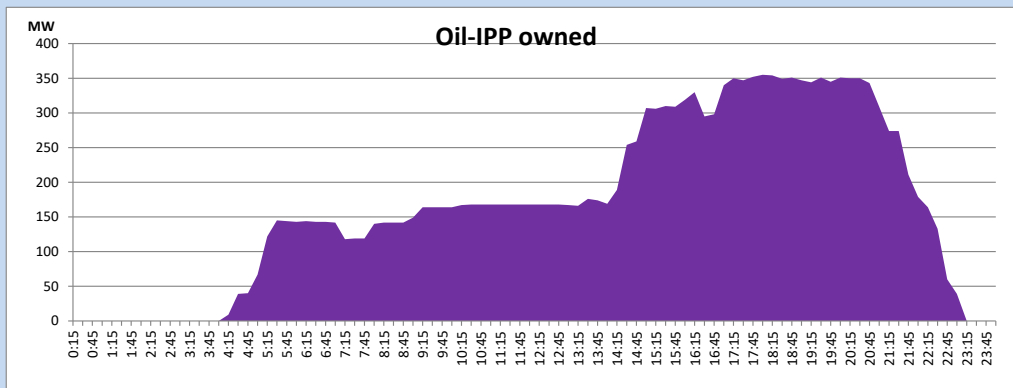
CEB Oil Plant Generation during

September 7, 2023



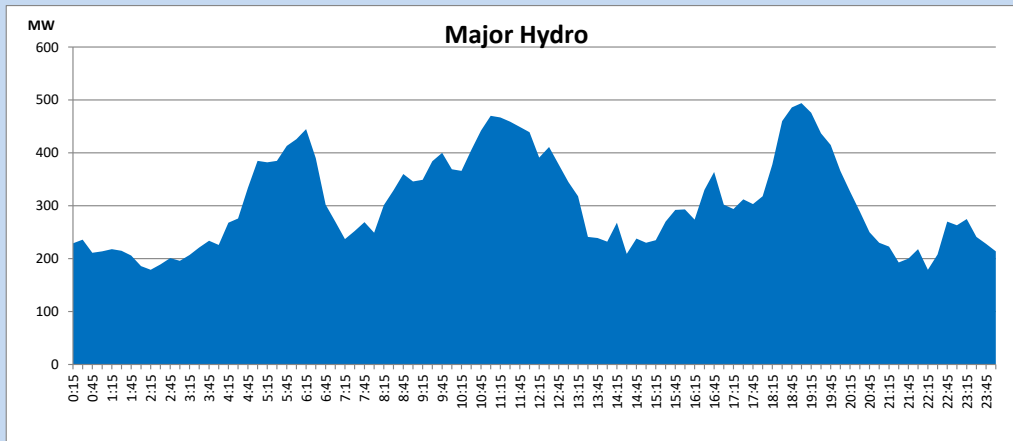
IPP Oil Plant Generation during

September 7, 2023



Major Hydro Generation during

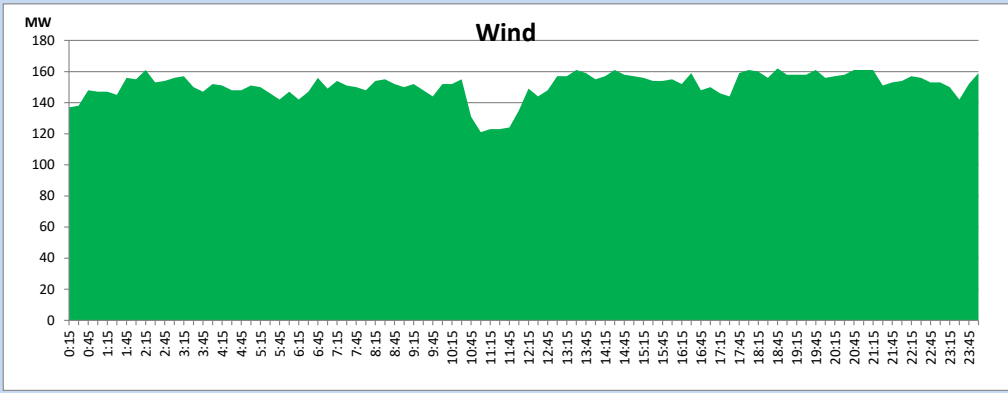
September 7, 2023



Wind Generation during

September 7, 2023

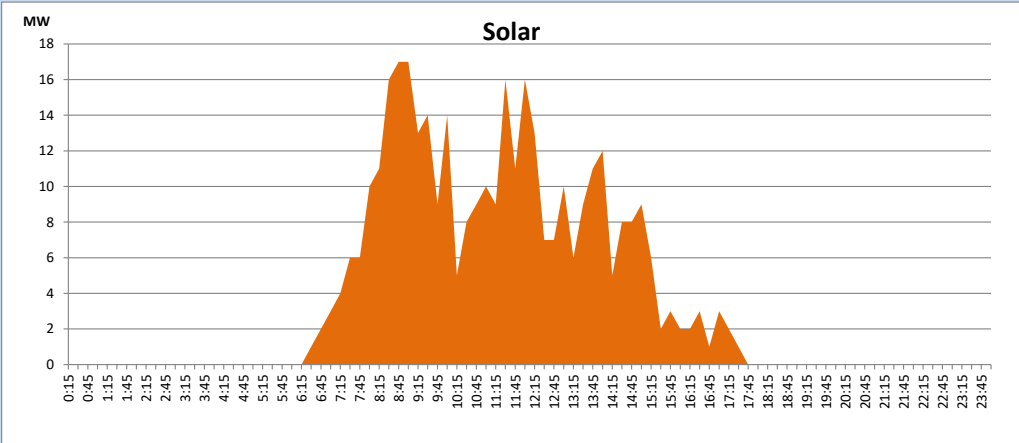
Based on Telemetered Power Stations only



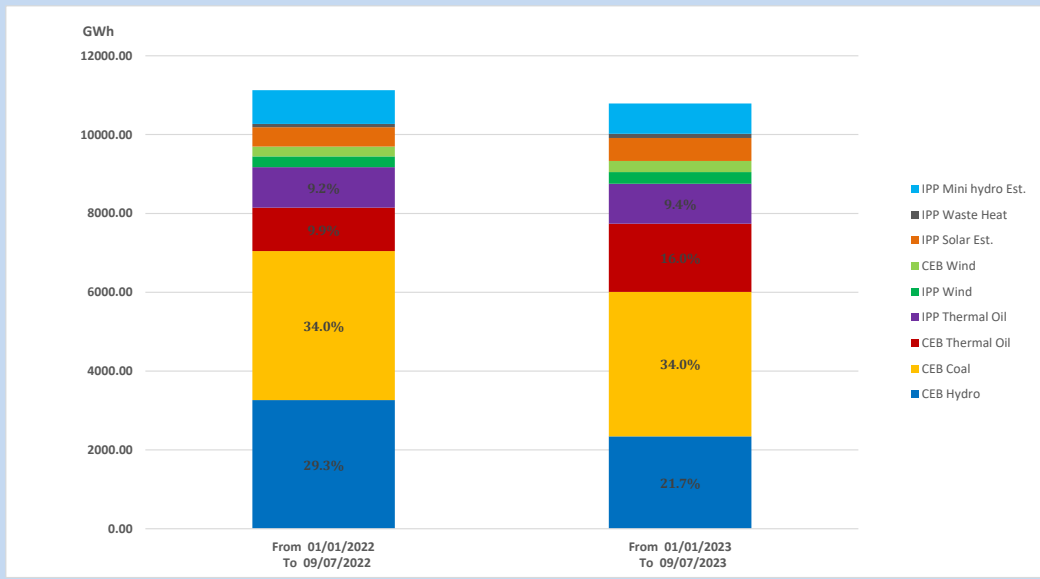
Solar Generation during

September 7, 2023

Based on Telemetered Power Stations only



15. Cumulative Dispatch Comparison with Last Year



Cumulative dispatch

From 01/01/2022 To 09/07/2022

11126 GWh

From 01/01/2023 To 09/07/2023

10791 GWh

The above figures are including contribution from roof top solar, non telemetered solar and mini hydro plants (figures have been adjusted based on the data from the CEB monthly review reports.)

Thermal Plant Fuel types

Table 08

Power Station	Primary Fuel
CEB Thermal	
Sapugaskanda 1	Heavy Fuel
Sapugaskanda 2	Heavy Fuel
Kelanitissa Small Gas Turbines	Auto Diesel
GT 7 - Kelanitissa	Auto Diesel
Kelanitissa CCY	Naphtha or Diesel
Lakvijaya 1	Coal
Lakvijaya 2	Coal
Lakvijaya 3	Coal
Uthuru Janani	Heavy Fuel
Barge CEB	Heavy Fuel
KCCPS -2	Auto Diesel

Power Station	Primary Fuel
Private Thermal	
West Coast	Auto Diesel / Heavy Fuel
ACE Matara	Heavy Fuel
ACE Embilipitiya	Heavy Fuel

Major Incidents reported during the day

September 7, 2023

- 1) Kukule pond spilling continues to the present hour.