

Generation and Reservoirs Statistics

September 2, 2023



PUBLIC UTILITIES COMMISSION OF SRI LANKA

1. Daily Generation Mix in MWh

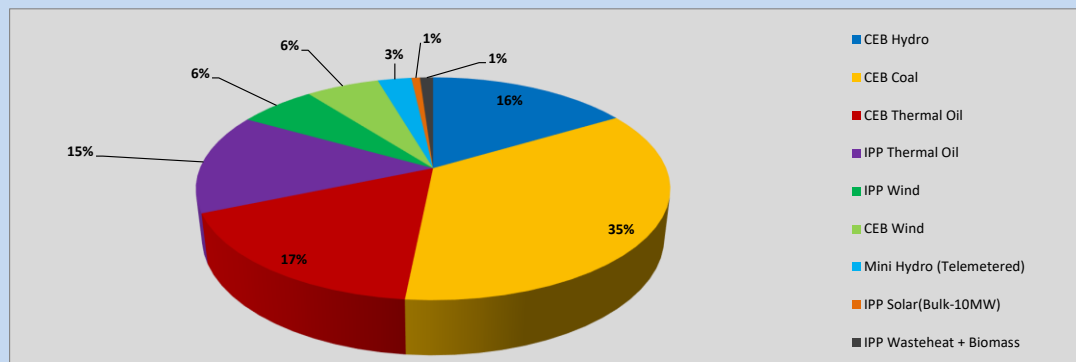


Table 01

	Generation (MWh)
CEB Hydro	5,958
CEB Coal	12,691
CEB Thermal Oil	6,170
IPP Thermal Oil	5,288
IPP Wind	2,281
CEB Wind	2,158
Mini Hydro (Telemetered)	995
IPP Solar (Bulk)	252
IPP Waste heat + Biomass	388
Total Generation (Excluding estimated figures)	36,161
* Estimated unserved energy	0
* Estimated Mini Hydro (Non telemetered)	2645
* Estimated IPP Solar PV (Bulk 1-10MW)	304
* Estimated Solar Roof Top PV	1650
Total Generation (Including estimated figures)	40,760

* Estimated figures of CEB generation report

Table 02

	Installed Capacity (MW)
CEB Hydro	1409
CEB Coal	810
CEB Thermal Oil	781
IPP Thermal Oil (West Coast, ACE Matara)	294
IPP Wind	148
CEB Wind	100
Mini Hydro	416
IPP Waste heat + Biomass	50
IPP Solar	130
Rooftop Solar* (Ordinary)	267
Rooftop Solar* (LT Bulk)	256
Rooftop Solar* (HT Bulk)	61

Data Source - Monthly Review Report [May-2023]

2. Cumulative Dispatch

Following data excludes the contribution from roof top solar, non telemetered solar and mini hydro plants

Table 03 - Current Month

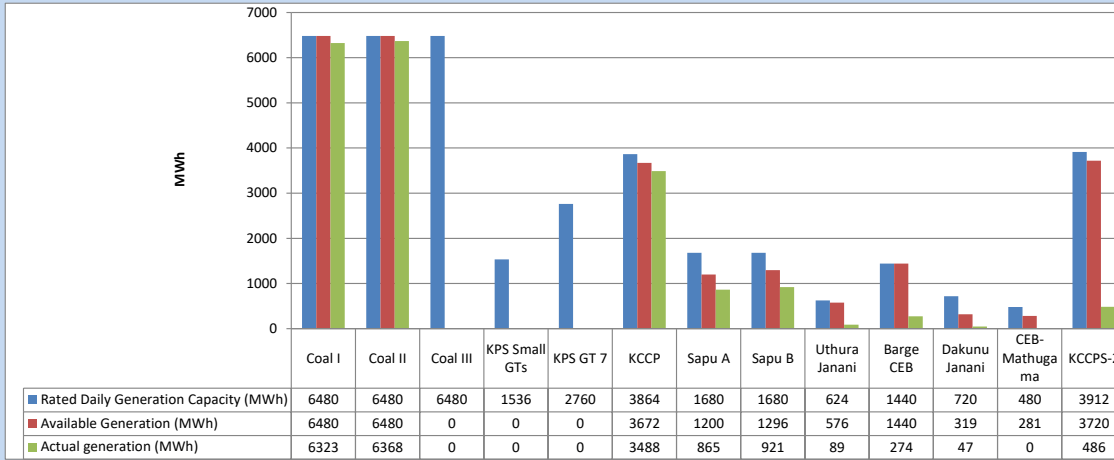
Category	Dispatch (GWh)	
CEB Hydro	11	15.05%
CEB Coal	26	33.90%
CEB Thermal Oil	16	21.15%
IPP Thermal	12	15.23%
SPP Wind	4	5.67%
CEB Wind	4	5.46%
Mini Hydro (Telemetered)	1	1.85%
IPP Solar(Bulk-10MW)	1	0.69%
IPP Waste heat + BMP	1	1.00%
Total	76	

Table 04 - Current Year

Category	Dispatch (GWh)	
CEB Hydro	2,310	24.23%
CEB Coal	3,610	37.86%
CEB Thermal Oil	1,701	17.84%
IPP Thermal	1,002	10.50%
SPP Wind	265	2.78%
CEB Wind	273	2.87%
Mini Hydro (Telemetered)	212	2.22%
IPP Solar(Bulk-10MW)	75	0.78%
IPP Waste heat	88	0.92%
Total	9,536	

3. CEB owned Thermal Plant Dispatch

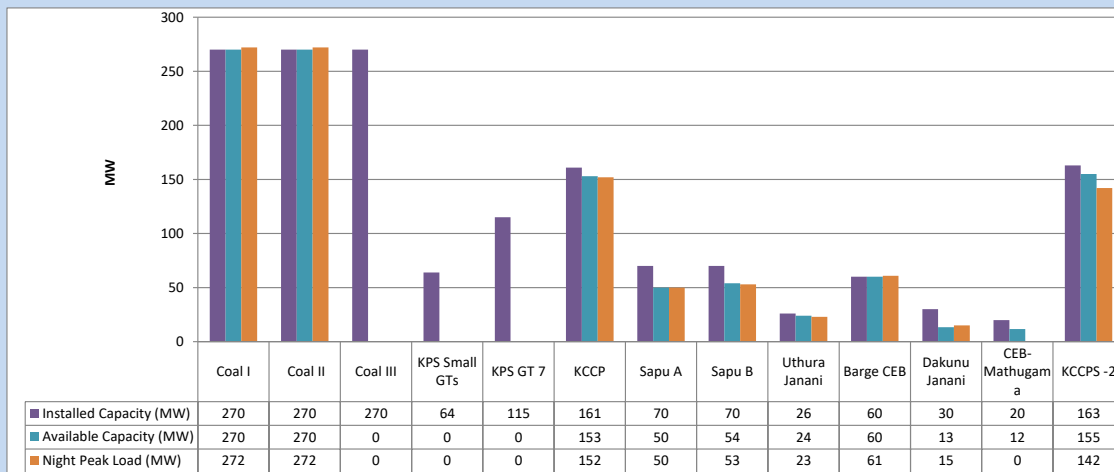
September 2, 2023



Available Generation is estimated based on plant availability at 6.00am on

September 3, 2023

4. CEB owned Thermal Plant Loading at the Night Peak

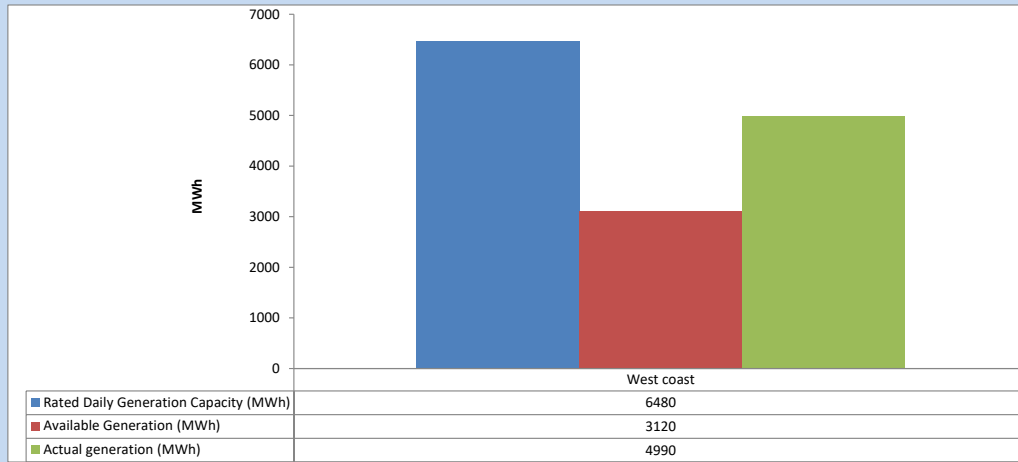


Plant availability is recorded at 6.00 am on

September 3, 2023

5. IPP owned Thermal Plant Dispatch

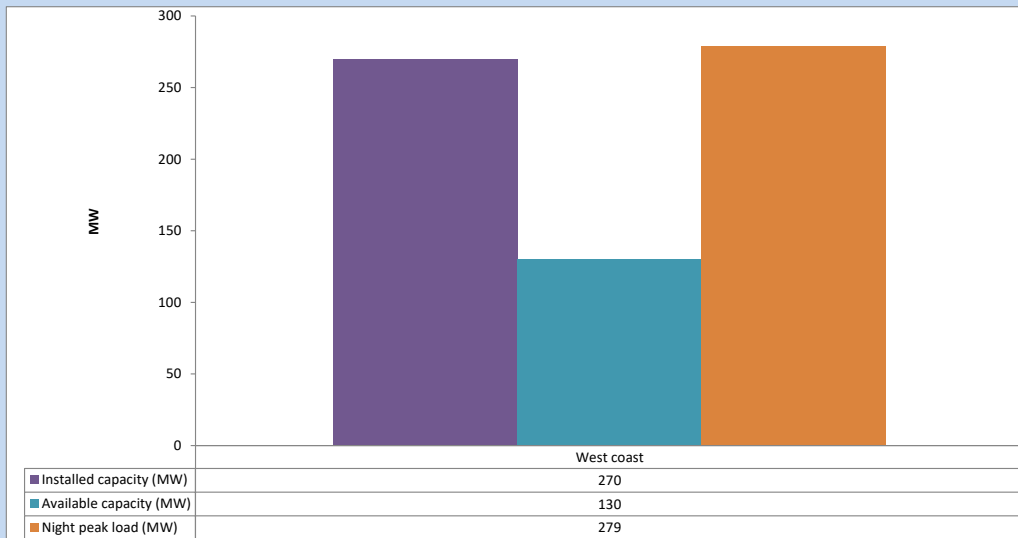
September 2, 2023



Available Generation is estimated based on plant availability at 6.00am on

September 3, 2023

6. IPP owned Thermal Plant Loading at the Night Peak

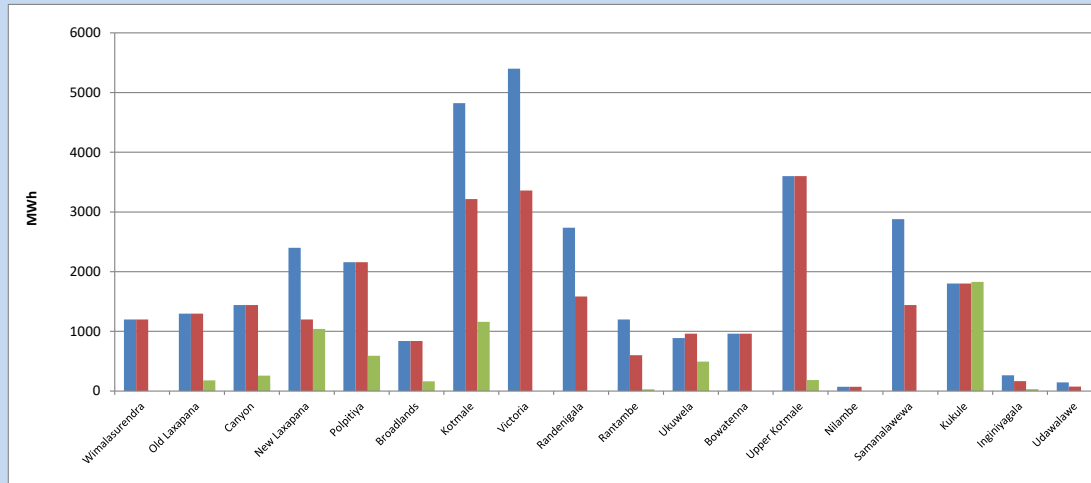


Plant availability is recorded at 6.00 am on

September 3, 2023

7. Major Hydro Plant Dispatch

September 2, 2023

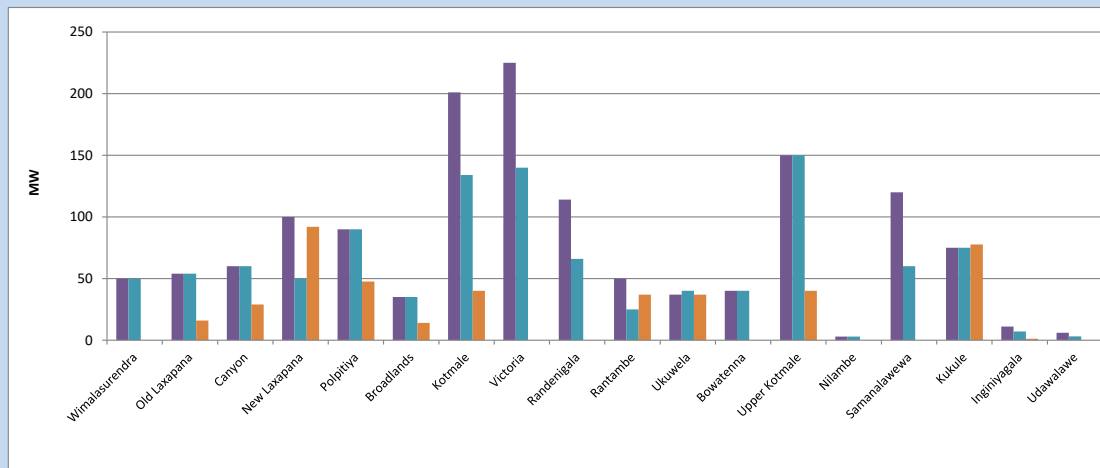


Available Generation is estimated based on plant availability at 6.00am on September 3, 2023
Broadlands power plant is operating in the Commissioning Stage

September 3, 2023

8. Major Hydro Plant Loading at Night Peak

September 2, 2023



Plant availability is recorded at 6.00 am on September 3, 2023
Broadlands power plant is operating in the Commissioning Stage

September 3, 2023

9. Summary of Major Plant performance

Table 05

Plant	Installed Capacity (MW)	Plant Availability (MW)	Night peak Load (MW)	Plant Dispatch (MWh)
Wimalasurendra	50	50	0	0
Old Laxapana Canyon	54	54	16	179
New Laxapana	60	60	29	258
Polpitiya	100	50	92	1,041
Broadlands	90	90	48	590
Kotmale	35	35	14	164
Kotmale	201	134	40	1,160
Victoria	225	140	0	0
Randenigala	114	66	0	0
Rantambe	50	25	37	29
Ukuwela	37	40	37	492
Bowatenna	40	40	0	0
Upper Kotmale	150	150	40	184
Nilambe	3	3	0	0
Samanalawewa	120	60	0	0
Kukule	75	75	78	1,829
Inginiyagala	11	7	1	32
Udawalawe	6	3	0	0
Puttalam Coal I	270	270	272	6,323
Puttalam Coal II	270	270	272	6,368
Puttalam Coal III	270	0	0	0
KPS Small GTs	64	0	0	0
KPS GT 7	115	0	0	0
KCCP	161	153	152	3,488
Sapugaskanda A	70	50	50	865
Sapugaskanda B	70	54	53	921
Uthura Janani	26	24	23	89
Barge CEB	60	60	61	274
CEB-Hambantota	30	13	15	47
CEB-Mathugama	20	12	0	0
ACE Matara	24	24	24	278
Asia Power	50	0	0	0
KCCPS -2	163	155	142	486
West Coast	270	130	279	4,990
Nothern Power	36	0	0	0
ACE Embilipitiya	93	0	0	0
Total	3,483	2,297	1,981	36,161

Plant availability is the availability recorded at 6 am on

September 3, 2023

10. Contribution to the Night Peak in MW

September 2, 2023

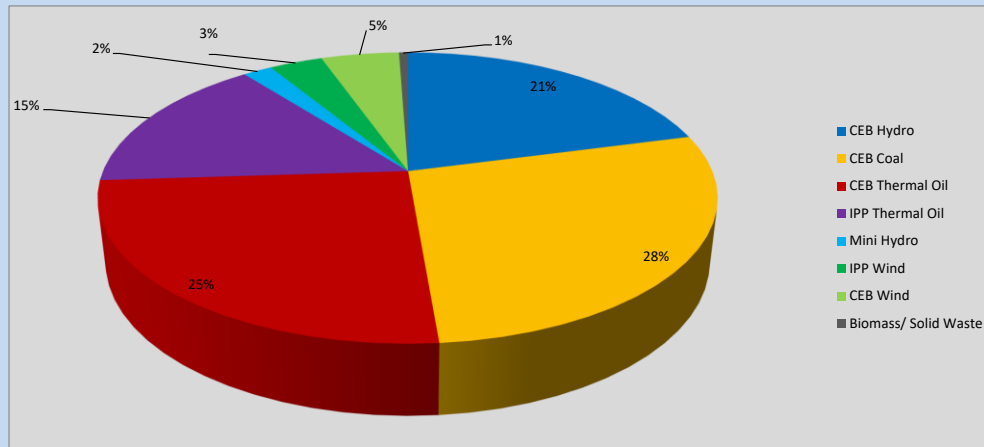


Table 06

CEB Hydro	410	MW
CEB Coal	544	MW
CEB Thermal Oil	496	MW
IPP Thermal Oil	303	MW
Mini Hydro (Telemetered)	35	MW
IPP Wind	65.1	MW
CEB Wind	95.2	MW
Biomass/ Solid Waste	11	MW

Recorded Peak Demand Data

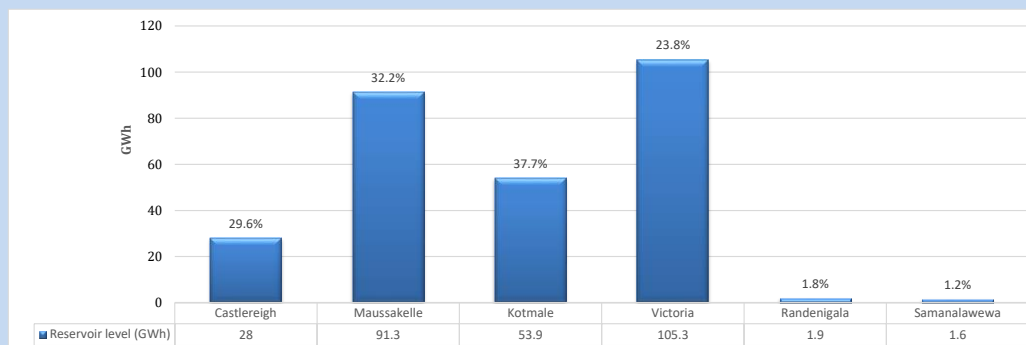
Table 07

Night Peak*	1,959	MW
Day Peak Maximum Demand	1,624	MW
Day Peak Minimum Demand	1,448	MW
Off Peak Minimum Demand	1,135	MW

Above figures are excluding contribution from roof top solar, non telemetered solar and mini hydro plants

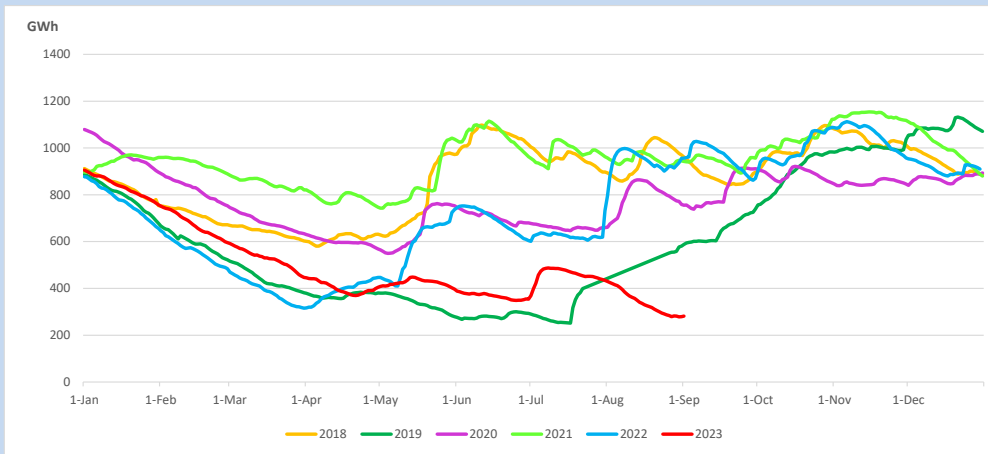
Reservoir Levels -

as at 06.00 Hr on September 3, 2023

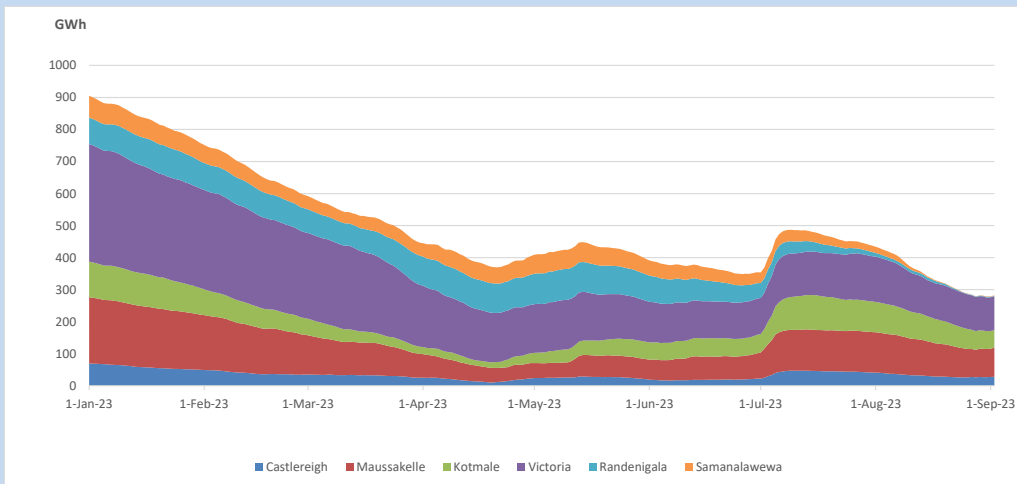


Total Reservoir Level 282 GWh
 % of Total capacity 23.5%

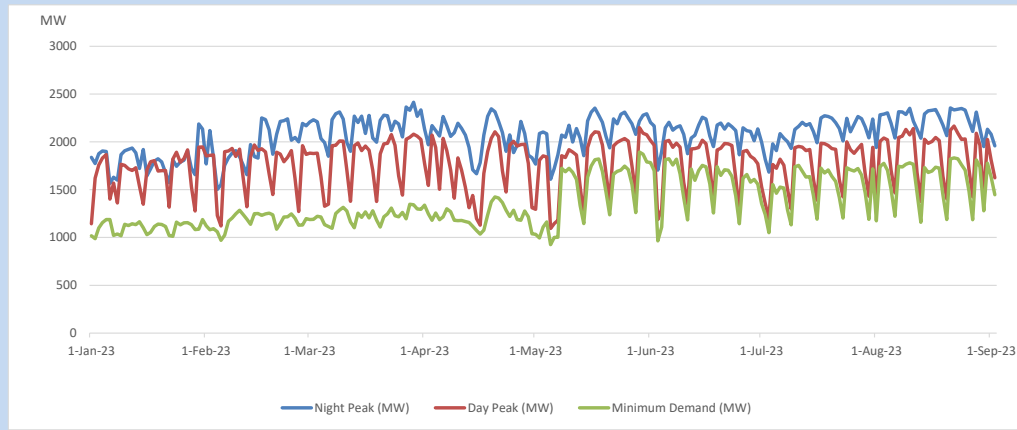
11. Comparison of Total Reservoir Storage Levels with Past Years



12. Variation of Major Hydro Reservoir Levels in the current year (GWh)



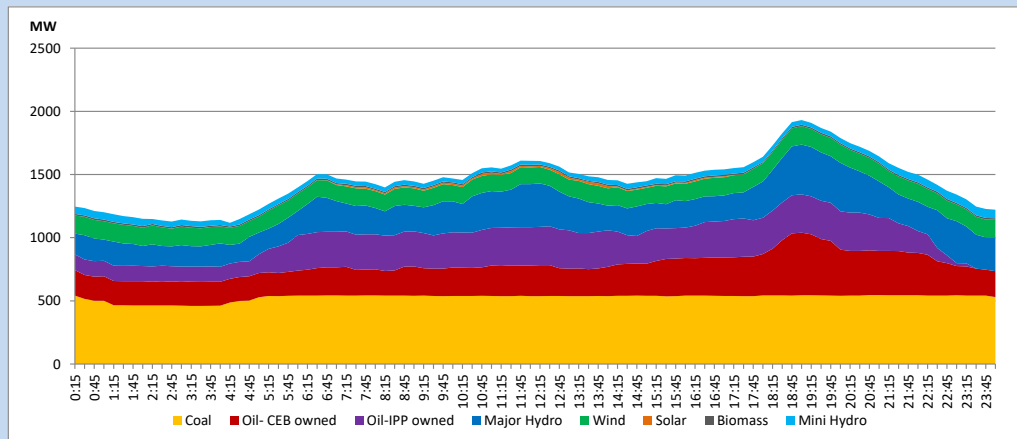
13. Variation of Demand during the current year



The above figures are excluding contribution from roof top solar, non telemetered solar and mini hydro plants

14. Daily Load Curve

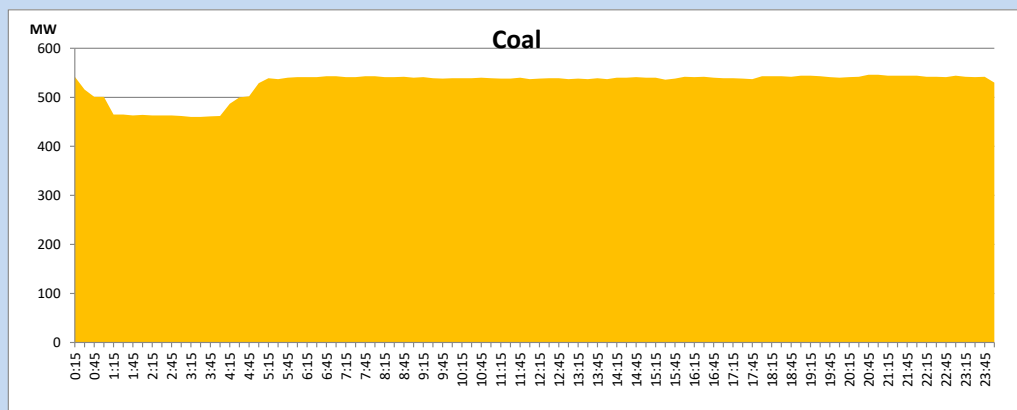
September 2, 2023



Solar and wind data is based on Telemetered Power Stations only

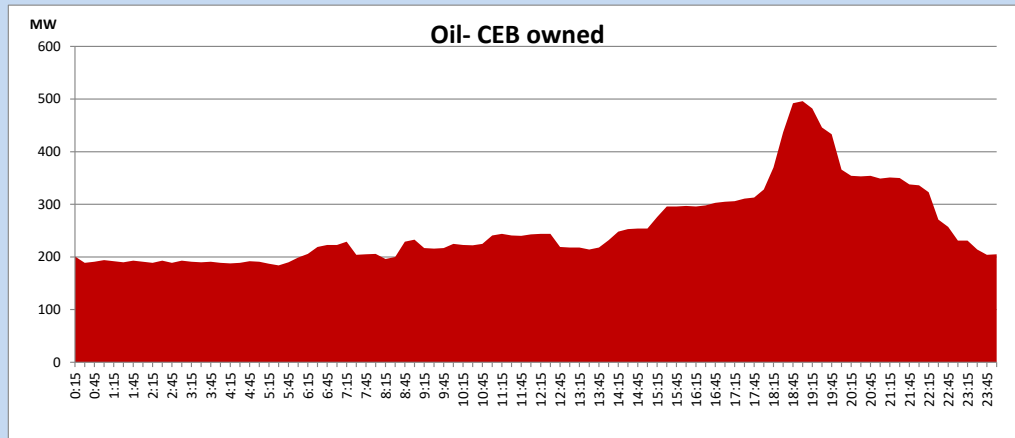
Coal Generation during

September 2, 2023



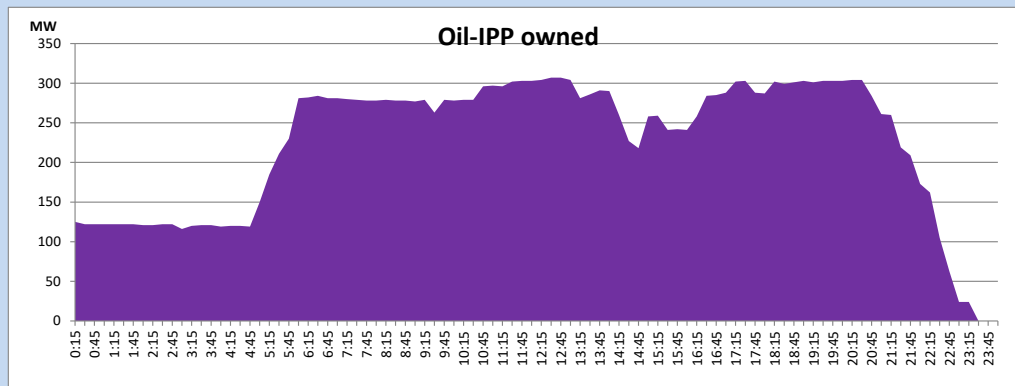
CEB Oil Plant Generation during

September 2, 2023



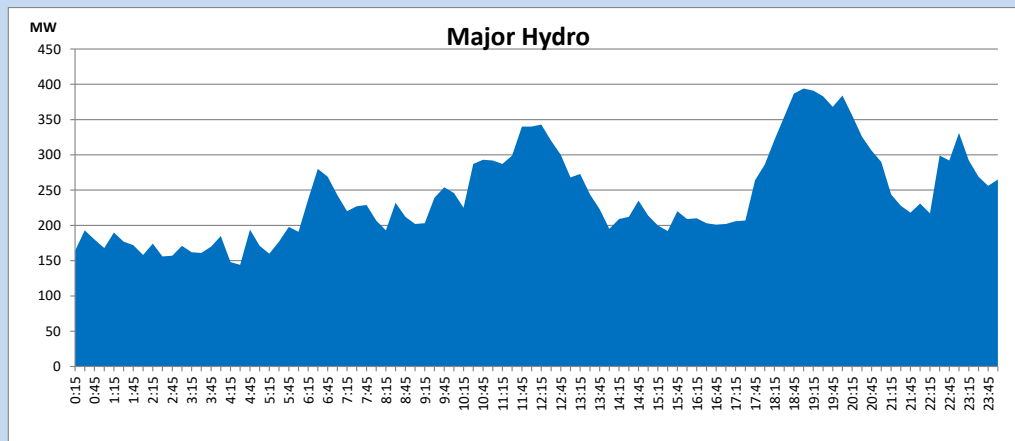
IPP Oil Plant Generation during

September 2, 2023



Major Hydro Generation during

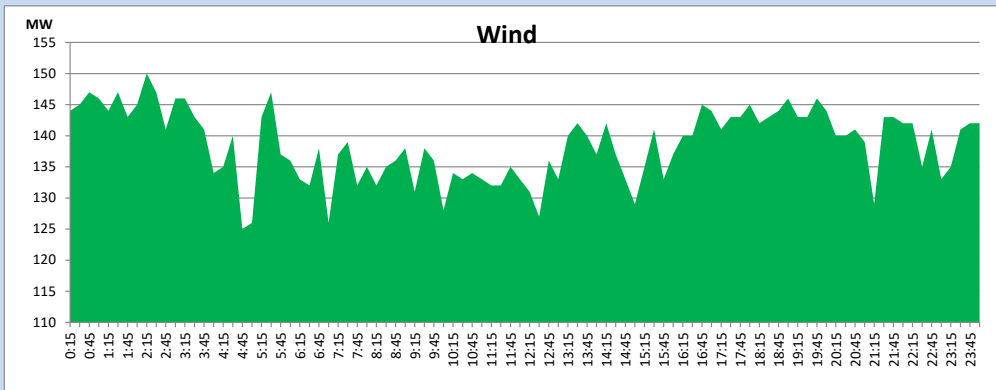
September 2, 2023



Wind Generation during

September 2, 2023

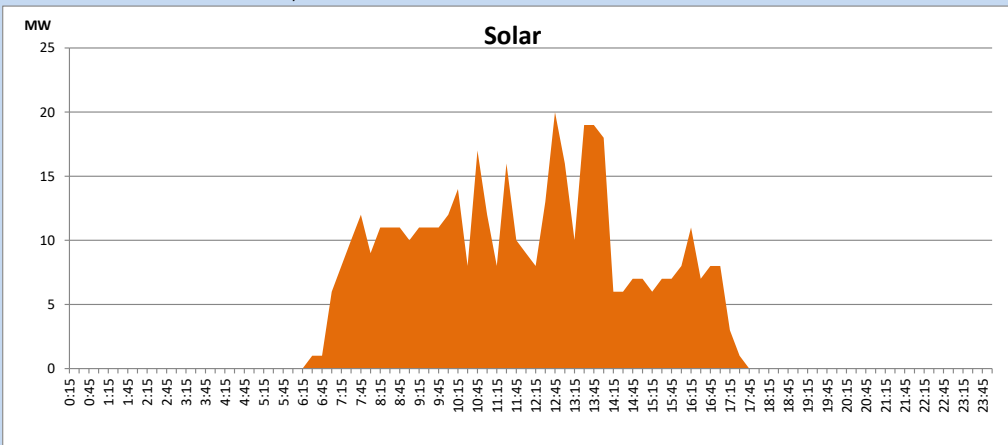
Based on Telemetered Power Stations only



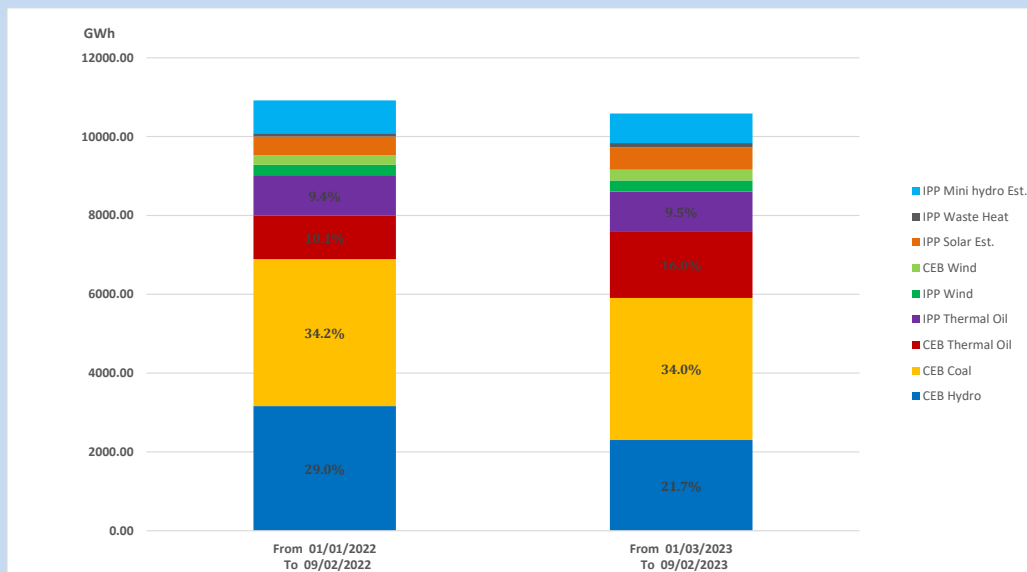
Solar Generation during

September 2, 2023

Based on Telemetered Power Stations only



15. Cumulative Dispatch Comparison with Last Year



Cumulative dispatch
From 01/01/2022 To 09/02/2022
From 01/01/2023 To 09/02/2023

10918 GWh
10587 GWh

The above figures are including contribution from roof top solar, non telemetered solar and mini hydro plants (figures have been adjusted based on the data from the CEB monthly review reports.)

Thermal Plant Fuel types

Table 08

Power Station	Primary Fuel
CEB Thermal	
Sapugaskanda 1	Heavy Fuel
Sapugaskanda 2	Heavy Fuel
Kelanitissa Small Gas Turbines	Auto Diesel
GT 7 - Kelanitissa	Auto Diesel
Kelanitissa CCY	Naphtha or Diesel
Lakvijaya 1	Coal
Lakvijaya 2	Coal
Lakvijaya 3	Coal
Uthuru Janani	Heavy Fuel
Barge CEB	Heavy Fuel
KCCPS -2	Auto Diesel

Power Station	Primary Fuel
Private Thermal	
West Coast	Auto Diesel / Heavy Fuel
ACE Matara	Heavy Fuel

Major Incidents reported during the day

September 2, 2023

- 1) Samanalawewa full load generation restricted, in order to comply with the operation constraints initiated by propagation of air bubbles at reservoir intake, which would further course for the possible formation of vortex at the same place, due to the severe depletion of Samanalawewa reservoir storage.
- 2) Kaluthara 132/33kV T/F 01 was normalized at 09:39hrs.
- 3) Kelaniya 132/33kV T/F 02 tripped at 12:13hrs indicating a signal from PRD. The T/F was normalized at 20:01hrs.
- 4) New Polpitiya-Hambanthota 220kV cct 02 was energized for the first time for soak test at 17:53hrs
- 5) Kukule spilling continuous to the