

Generation and Reservoirs Statistics

July 30, 2023



PUBLIC UTILITIES COMMISSION OF SRI LANKA

1. Daily Generation Mix in MWh

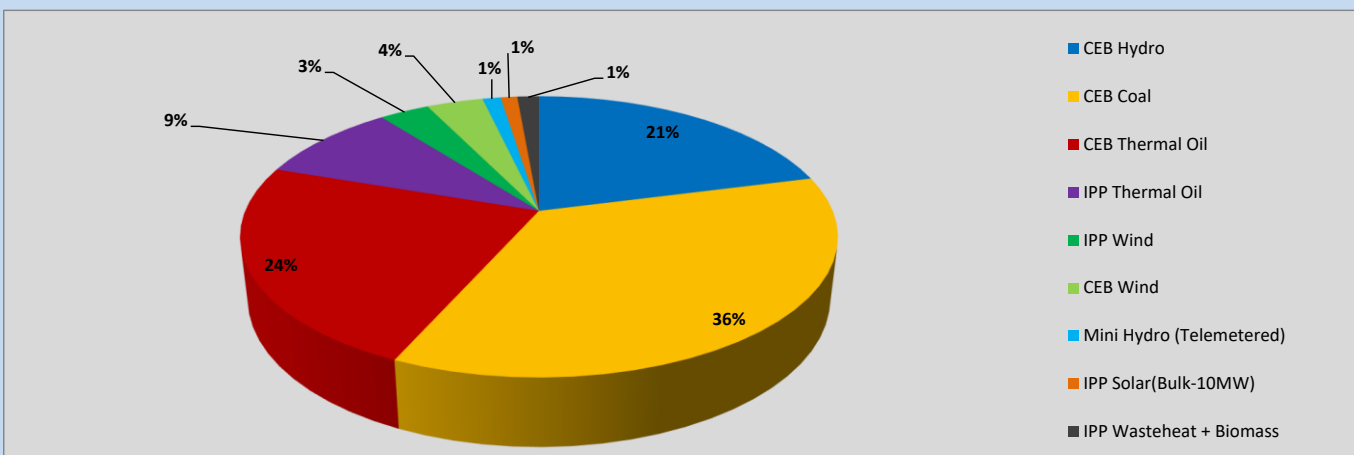


Table 01

CEB Hydro	7,491	MWh
CEB Coal	12,738	MWh
CEB Thermal Oil	8,396	MWh
IPP Thermal Oil	3,299	MWh
IPP Wind	1,153	MWh
CEB Wind	1,304	MWh
Mini Hydro (Telemetered)	419	MWh
IPP Solar (Bulk)	384	MWh
IPP Wasteheat + Biomass	498	MWh
Total Generation (Excluding estimated figures)	35,682	MWh
* Estimated unserved energy	0	MWh
* Estimated Mini Hydro (Non telemetered)	3091	MWh
* Estimated IPP Solar PV (Bulk 1-10MW)	304	MWh
* Estimated Solar Roof Top PV	1650	MWh
Total Generation (Including estimated figures)	40,727	MWh

* Estimated figures of CEB generation report

2. Cumulative Dispatch

Following data excludes the contribution from roof top solar, non telemetered solar and mini hydro plants

Table 02 - Current Month

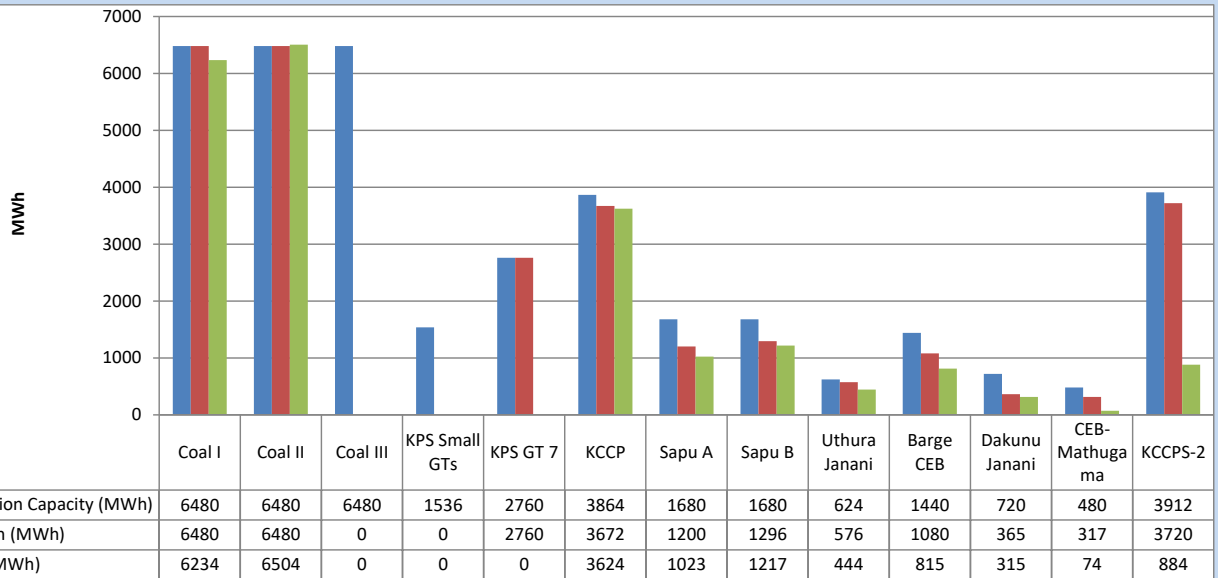
Category	Dispatch (GWh)	
CEB Hydro	301	25.64%
CEB Coal	354	30.17%
CEB Thermal Oil	209	17.84%
IPP Thermal	144	12.25%
SPP Wind	57	4.90%
CEB Wind	51	4.34%
Mini Hydro (Telemetered)	35	2.97%
IPP Solar(Bulk-10MW)	10	0.84%
IPP Wasteheat + BMP	12	1.06%
Total	1,173	

Table 03 - Current Year

Category	Dispatch (GWh)	
CEB Hydro	2,039	25.09%
CEB Coal	3,237	39.83%
CEB Thermal Oil	1,293	15.91%
IPP Thermal	798	9.82%
SPP Wind	209	2.57%
CEB Wind	215	2.65%
Mini Hydro (Telemetered)	201	2.47%
IPP Solar(Bulk-10MW)	63	0.77%
IPP Wasteheat	72	0.89%
Total	8,126	

3. CEB owned Thermal Plant Dispatch

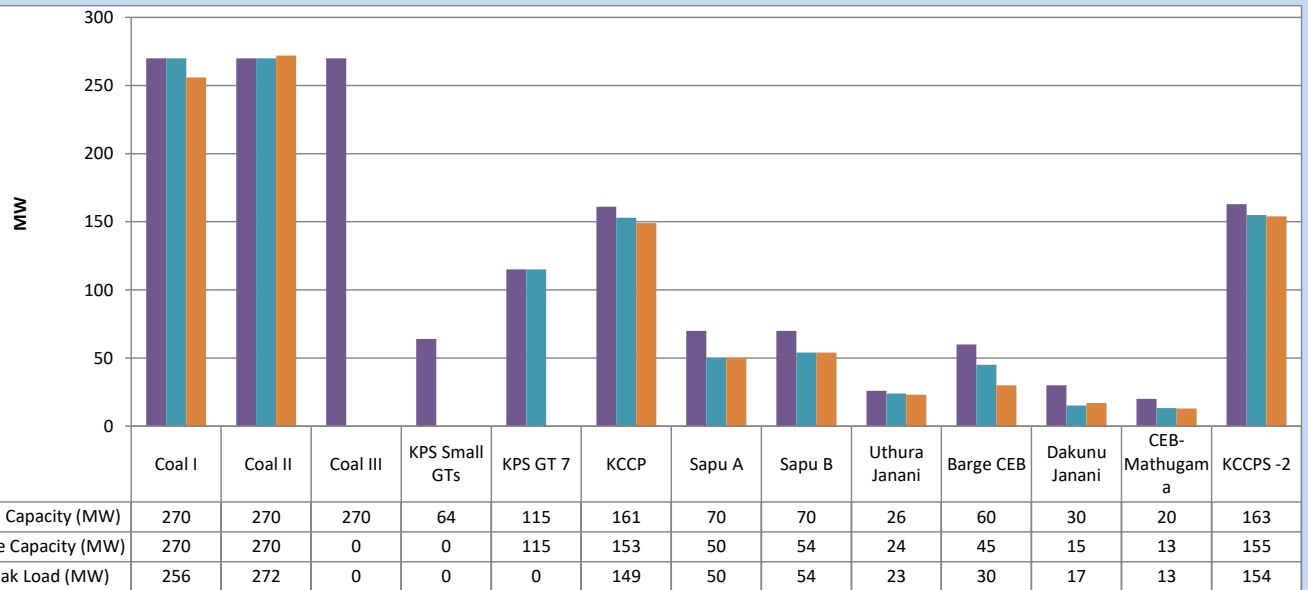
July 30, 2023



Available Generation is estimated based on plant availability at 6.00am on

July 31, 2023

4. CEB owned Thermal Plant Loading at the Night Peak

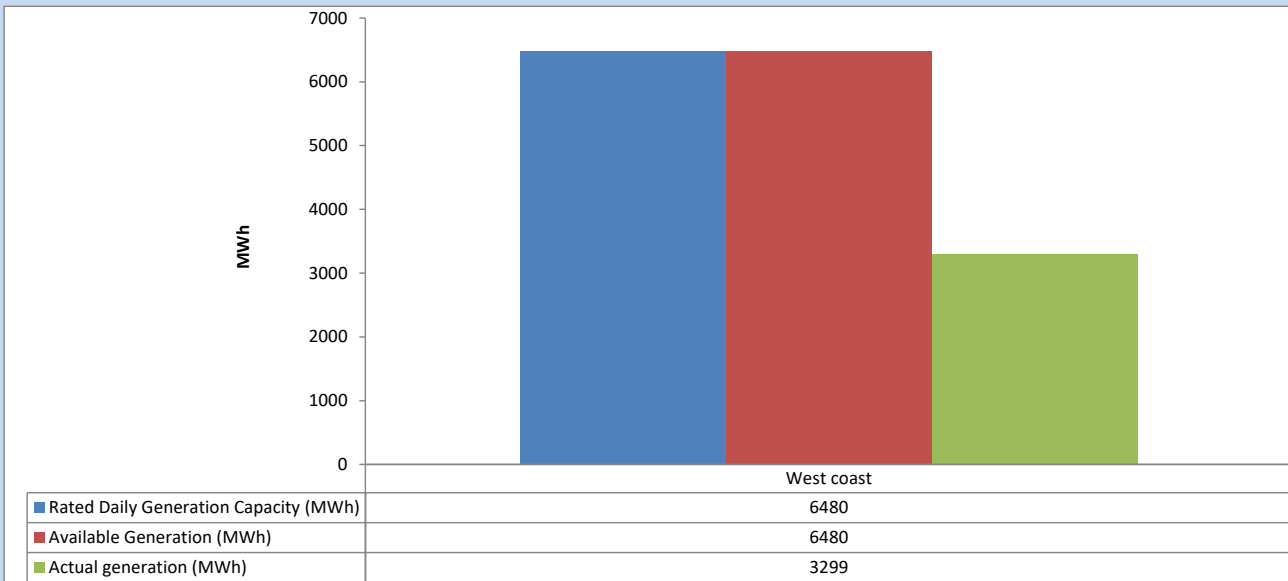


Plant availability is recorded at 6.00 am on

July 31, 2023

5. IPP owned Thermal Plant Dispatch

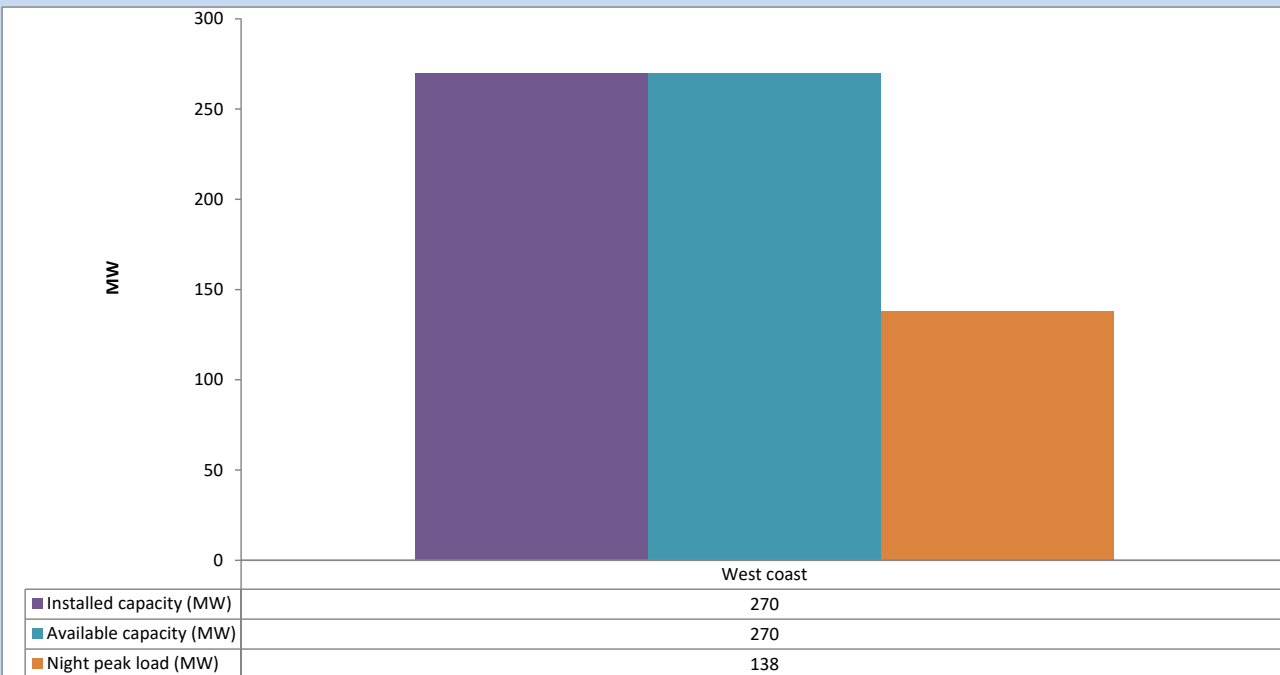
July 30, 2023



Available Generation is estimated based on plant availability at 6.00am on

July 31, 2023

6. IPP owned Thermal Plant Loading at the Night Peak

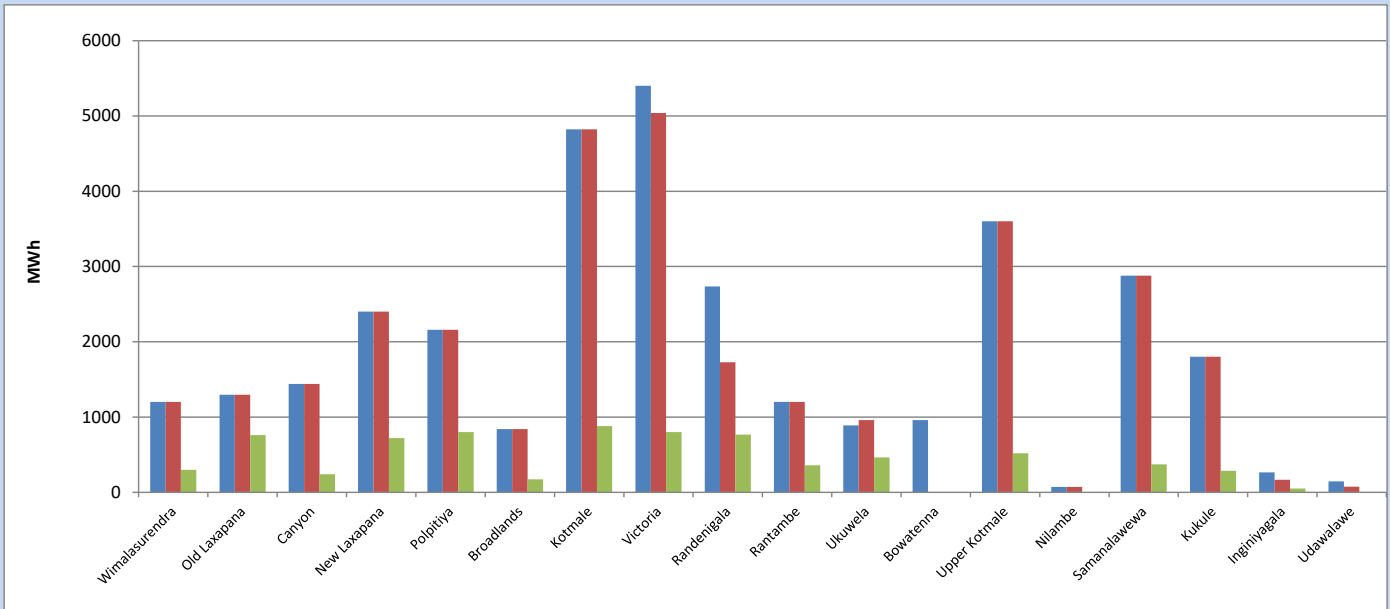


Plant availability is recorded at 6.00 am on

July 31, 2023

7. Major Hydro Plant Dispatch

July 30, 2023

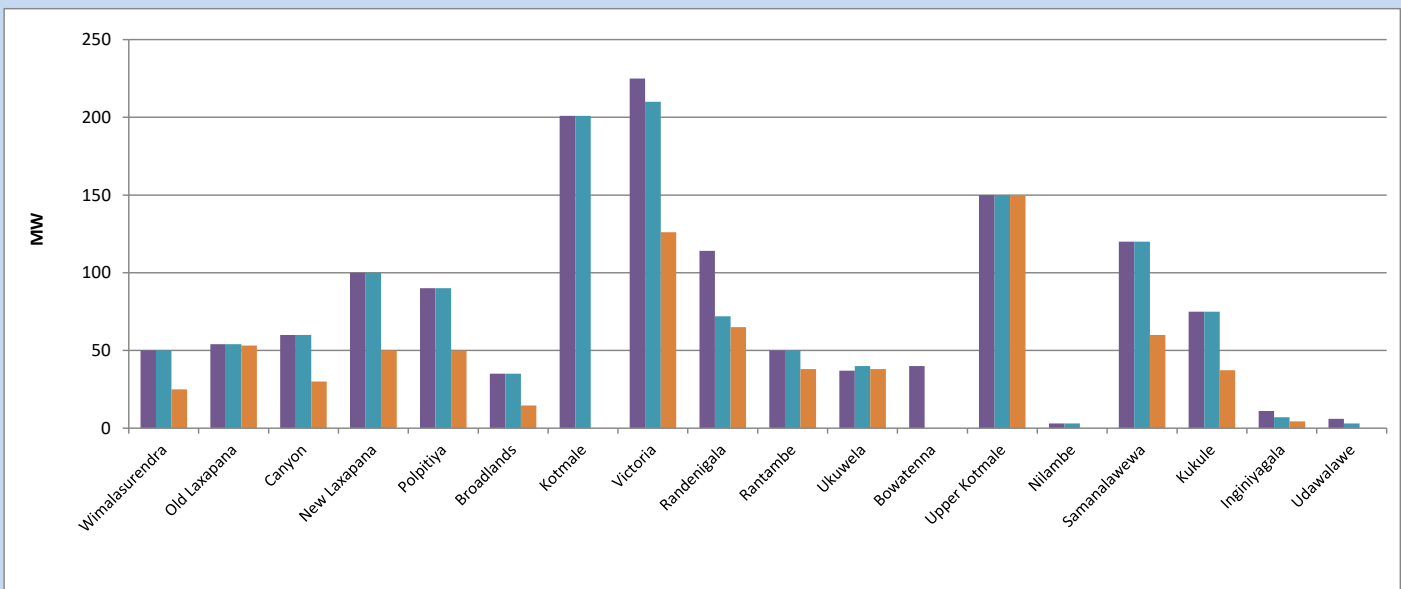


Available Generation is estimated based on plant availability at 6.00am on
Broadlands power plant is operating in the Commissioning Stage

July 31, 2023

8. Major Hydro Plant Loading at Night Peak

July 30, 2023



Plant availability is recorded at 6.00 am on
Broadlands power plant is operating in the Commissioning Stage

July 31, 2023

9. Summary of Major Plant performance

Table 04

Plant	Installed Capacity	Plant Availability	Night peak Load	Plant Dispatch
	(MW)	(MW)	(MW)	(MWh)
Wimalasurendra	50	50	25	298
Old Laxapana	54	54	53	760
Canyon	60	60	30	240
New Laxapana	100	100	50	720
Polpitiya	90	90	50	801
Broadlands	35	35	15	173
Kotmale	201	201	0	880
Victoria	225	210	126	800
Randenigala	114	72	65	766
Rantambe	50	50	38	359
Ukuwela	37	40	38	465
Bowatenna	40	0	0	0
Upper Kotmale	150	150	150	519
Nilambe	3	3	0	2
Samanalawewa	120	120	60	371
Kukule	75	75	37	285
Inginiyagala	11	7	4	52
Udawalawe	6	3	0	0
Puttalam Coal I	270	270	256	6,234
Puttalam Coal II	270	270	272	6,504
Puttalam Coal III	270	0	0	0
KPS Small GTs	64	0	0	0
KPS GT 7	115	115	0	0
KCCP	161	153	149	3,624
Sapugaskanda A	70	50	50	1,023
Sapugaskanda B	70	54	54	1,217
Uthura Janani	26	24	23	444
Barge CEB	60	45	30	815
CEB-Hambantota	30	15	17	315
CEB-Mathugama	20	13	13	74
ACE Matara	24	0	0	0
Asia Power	50	0	0	0
KCCPS -2	163	155	154	884
West Coast	270	270	138	3,299
Nothern Power	36	0	0	0
ACE Embilipitiya	93	0	0	0
Total	3,483	2,755	2,056	35,682

Plant availability is the availability recorded at 6 am on

July 31, 2023

10. Contribution to the Night Peak in MW

July 30, 2023

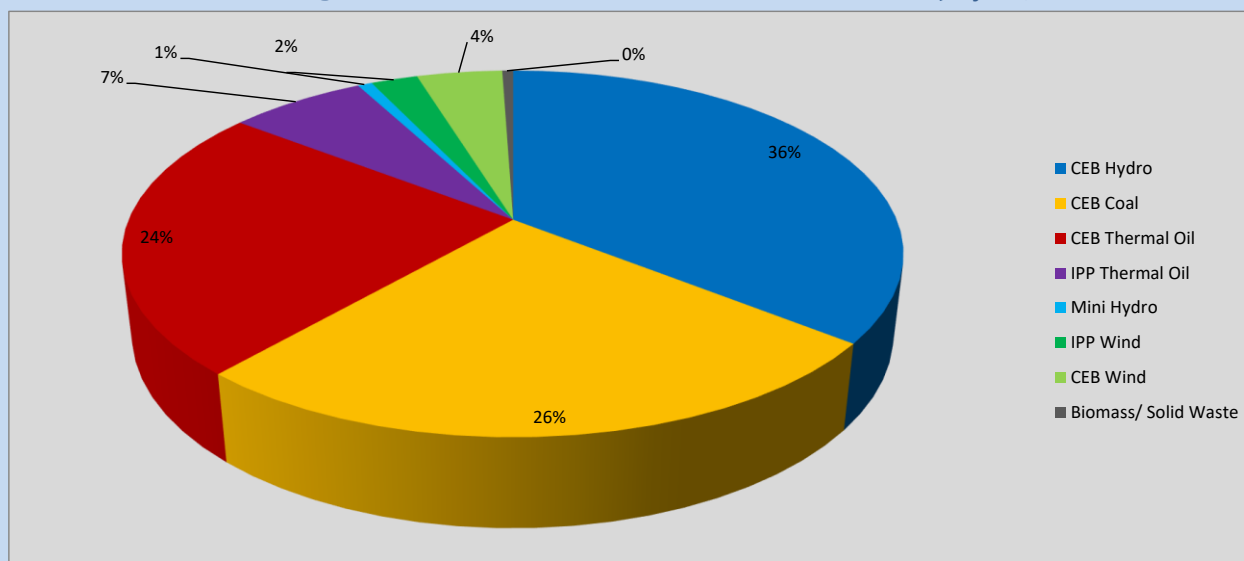


Table 05

CEB Hydro	728	MW
CEB Coal	528	MW
CEB Thermal Oil	490	MW
IPP Thermal Oil	138	MW
Mini Hydro (Telemetered)	15	MW
IPP Wind	47.2	MW
CEB Wind	86.4	MW
Biomass/ Solid Waste	11	MW

Recorded Peak Demand Data

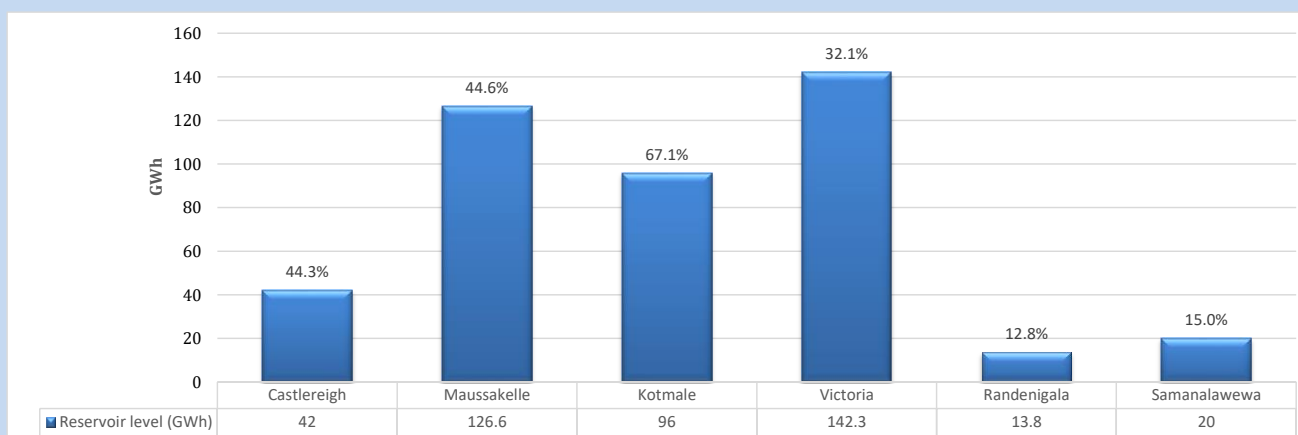
Table 06

Night Peak*	2,043	MW
Day Peak Maximum Demand	1,432	MW
Day Peak Minimum Demand	1,190	MW
Off Peak Minimum Demand	1,309	MW

Above figures are excluding contribution from roof top solar, non telemetered solar and mini hydro plants

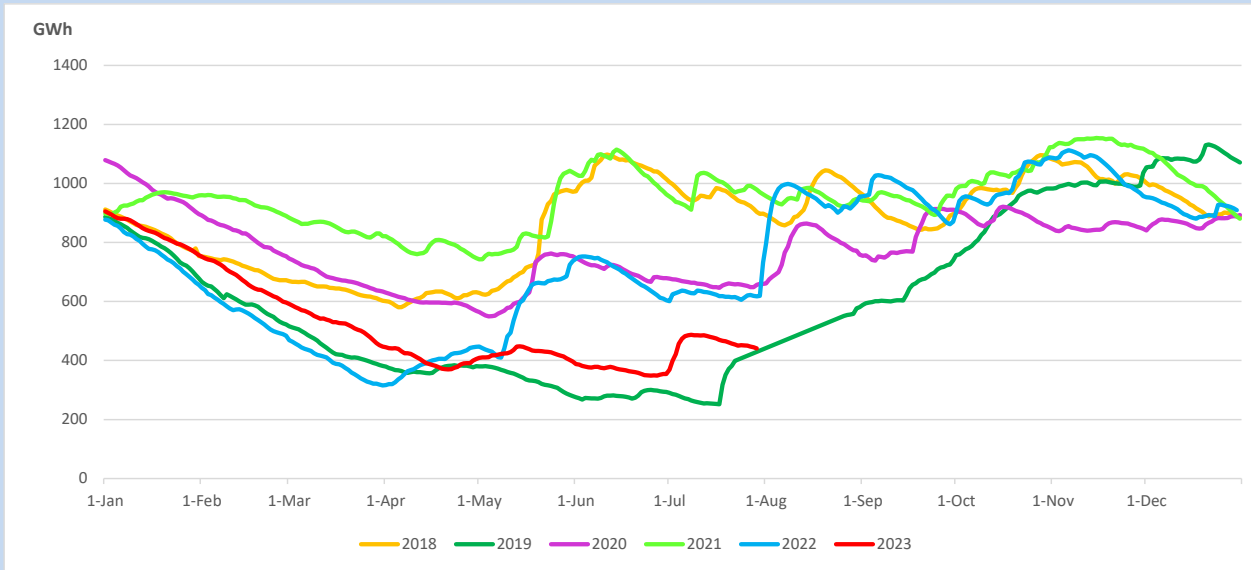
Reservoir Levels -

as at 06.00 Hr on July 31, 2023

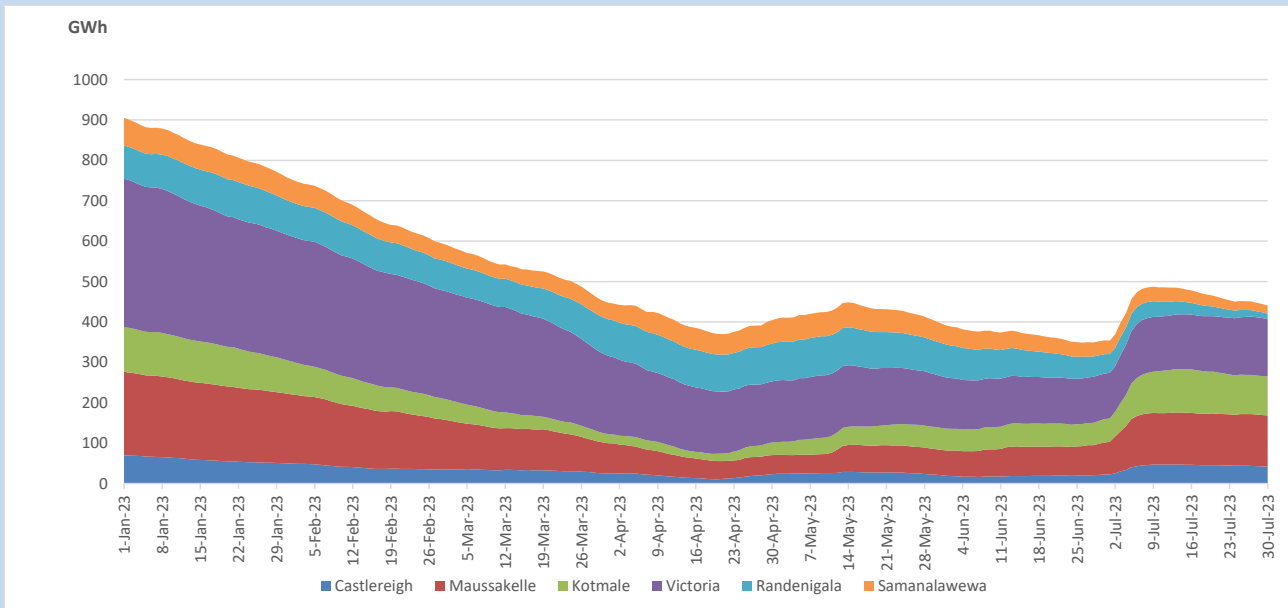


Total Reservoir Level 440.7 GWh
 % of Total capacity 36.5%

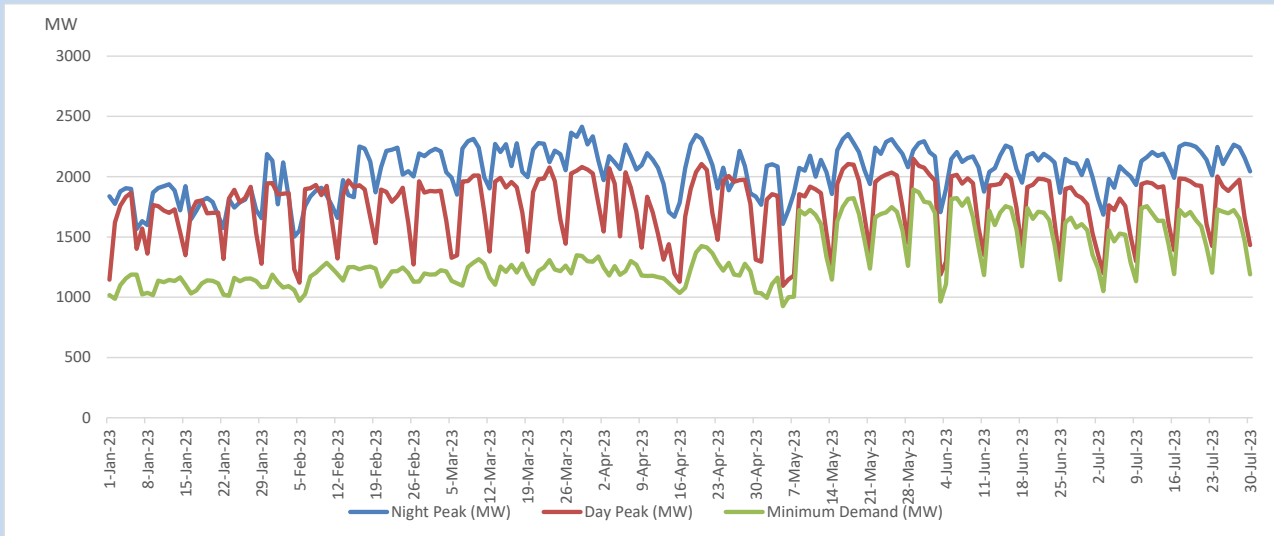
11. Comparison of Total Reservoir Storage Levels with Past Years



12. Variation of Major Hydro Reservoir Levels in the current year (GWh)



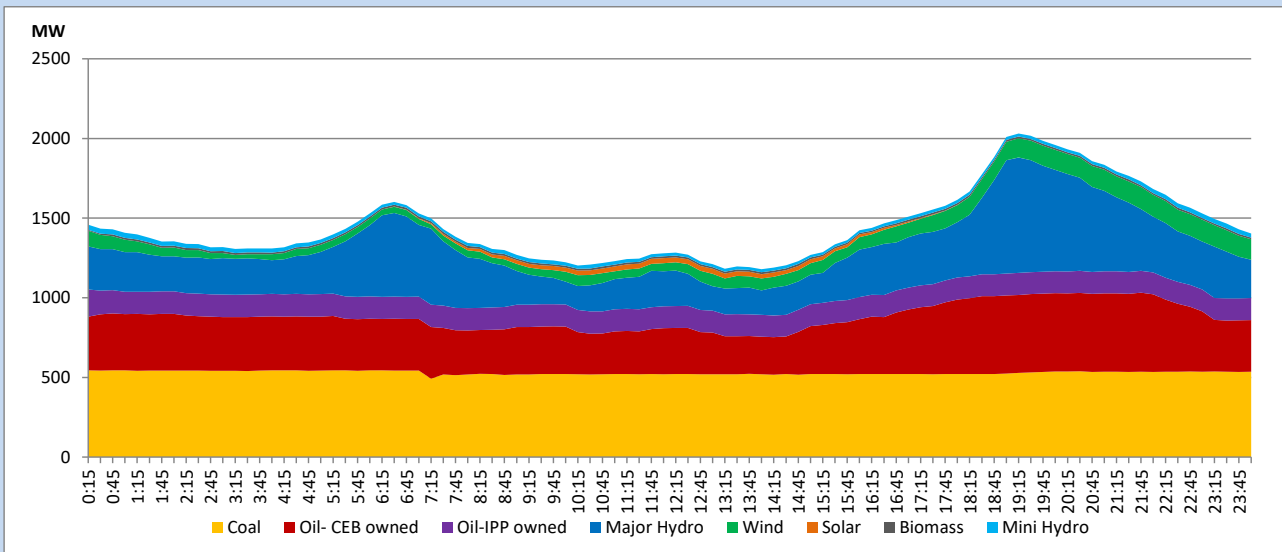
13. Variation of Demand during the current year



The above figures are excluding contribution from roof top solar, non telemetered solar and mini hydro plants

14. Daily Load Curve

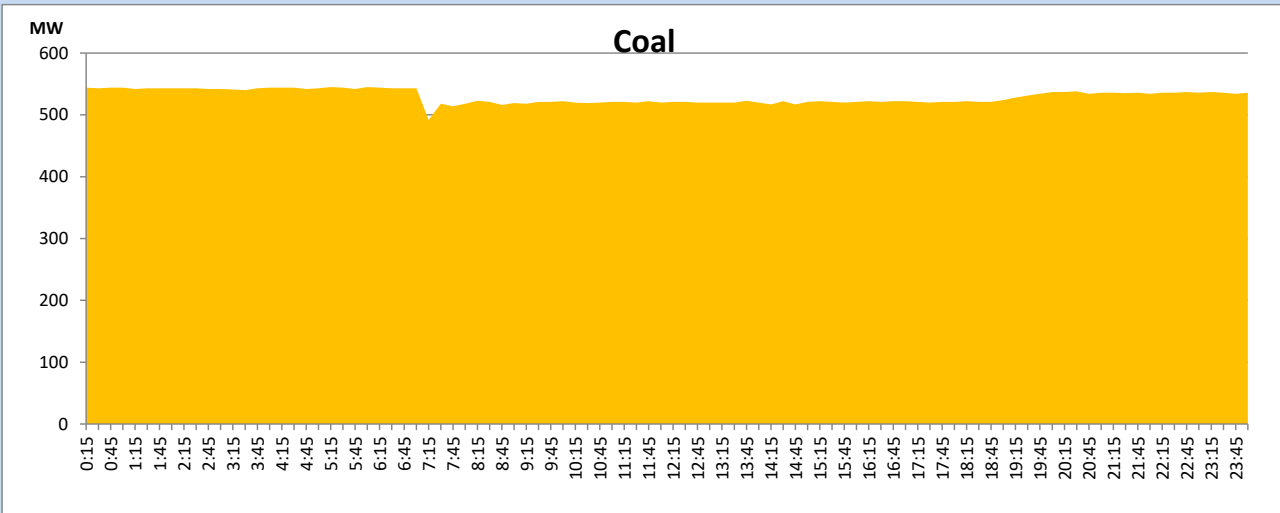
July 30, 2023



Solar and wind data is based on Telemetered Power Stations only

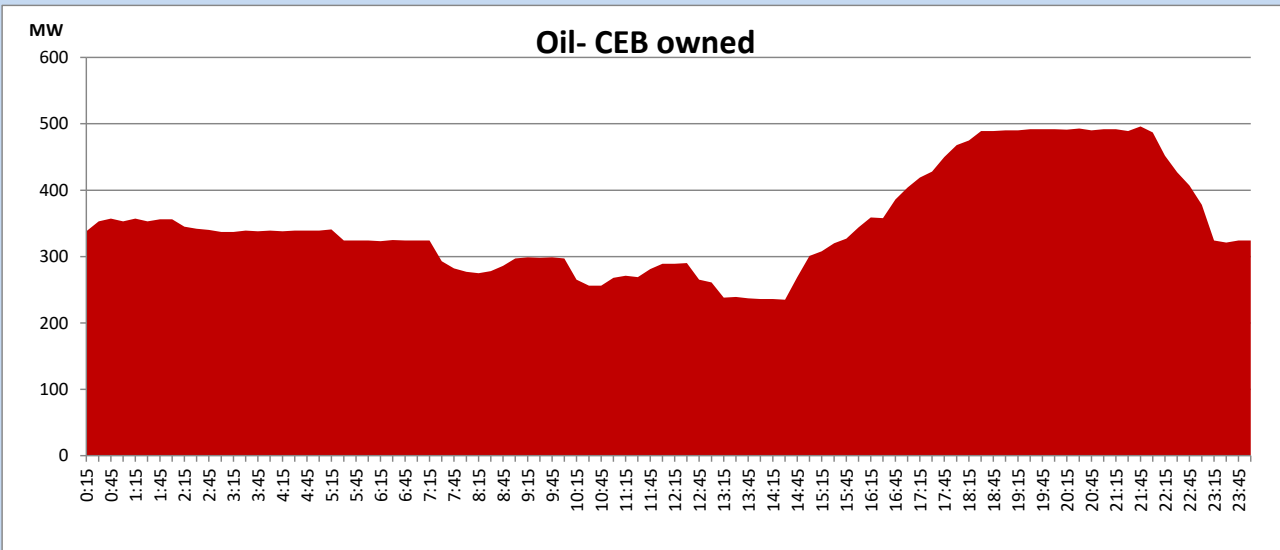
Coal Generation during

July 30, 2023



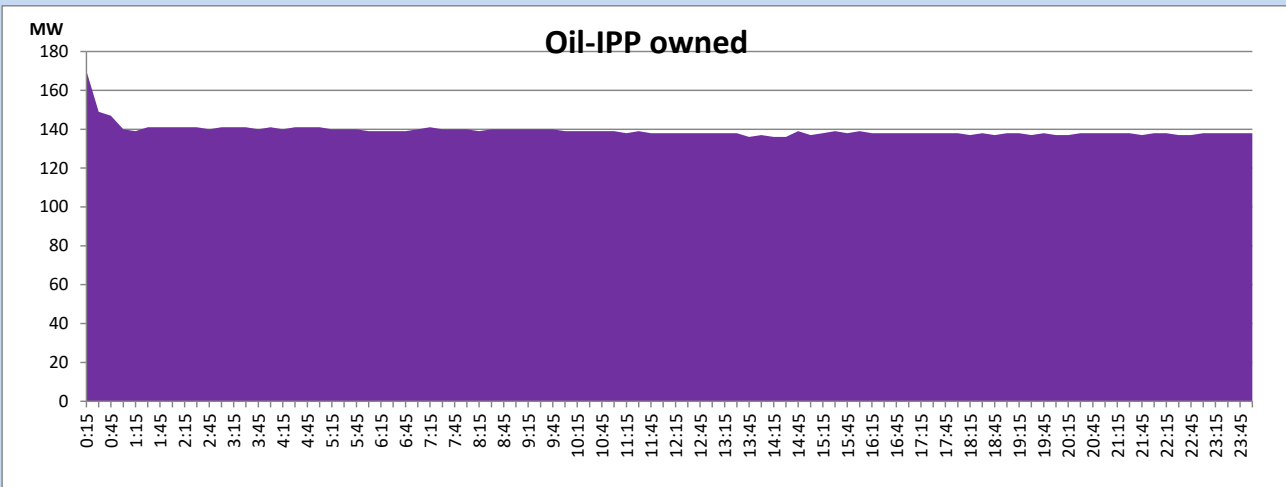
CEB Oil Plant Generation during

July 30, 2023



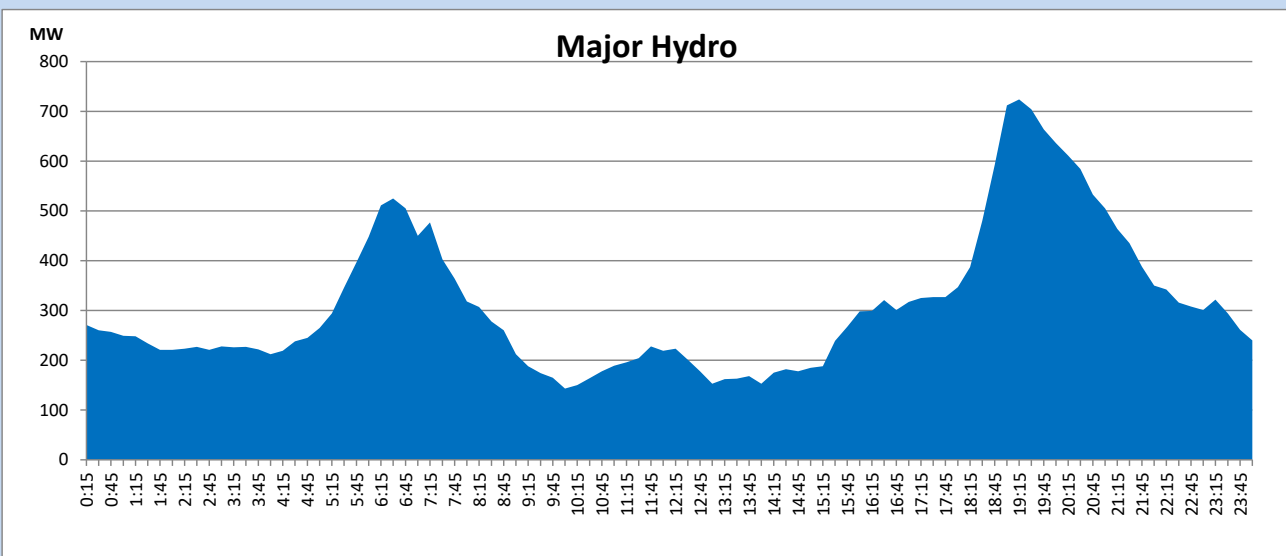
IPP Oil Plant Generation during

July 30, 2023



Major Hydro Generation during

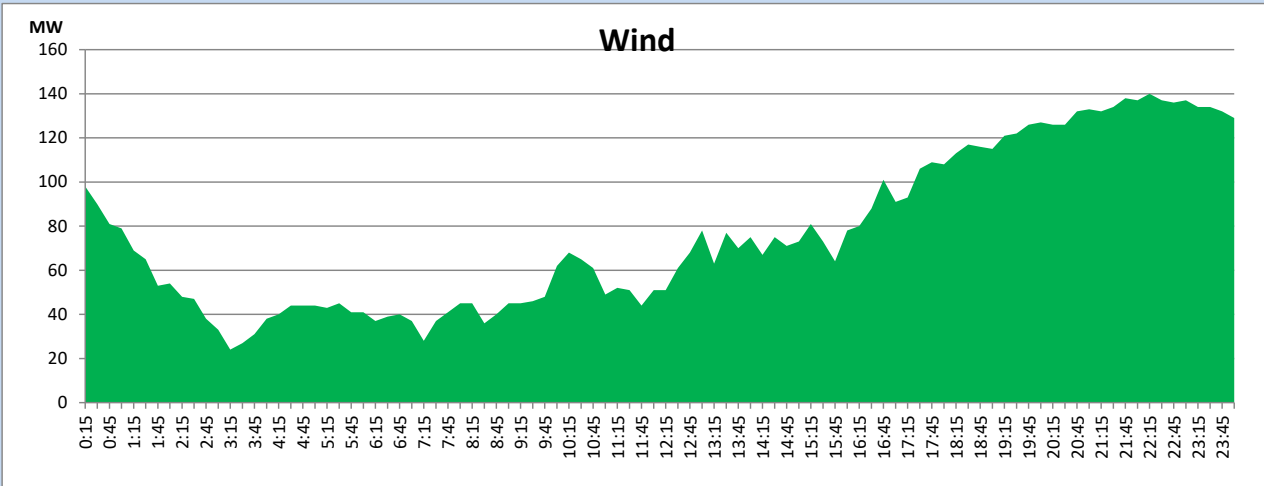
July 30, 2023



Wind Generation during

July 30, 2023

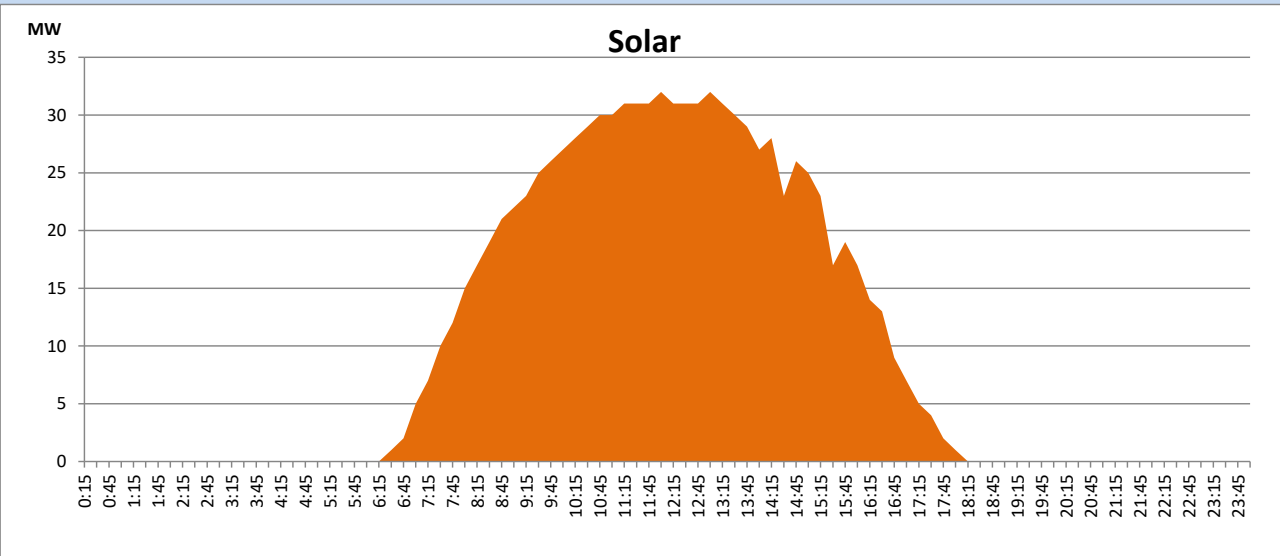
Based on Telemetered Power Stations only



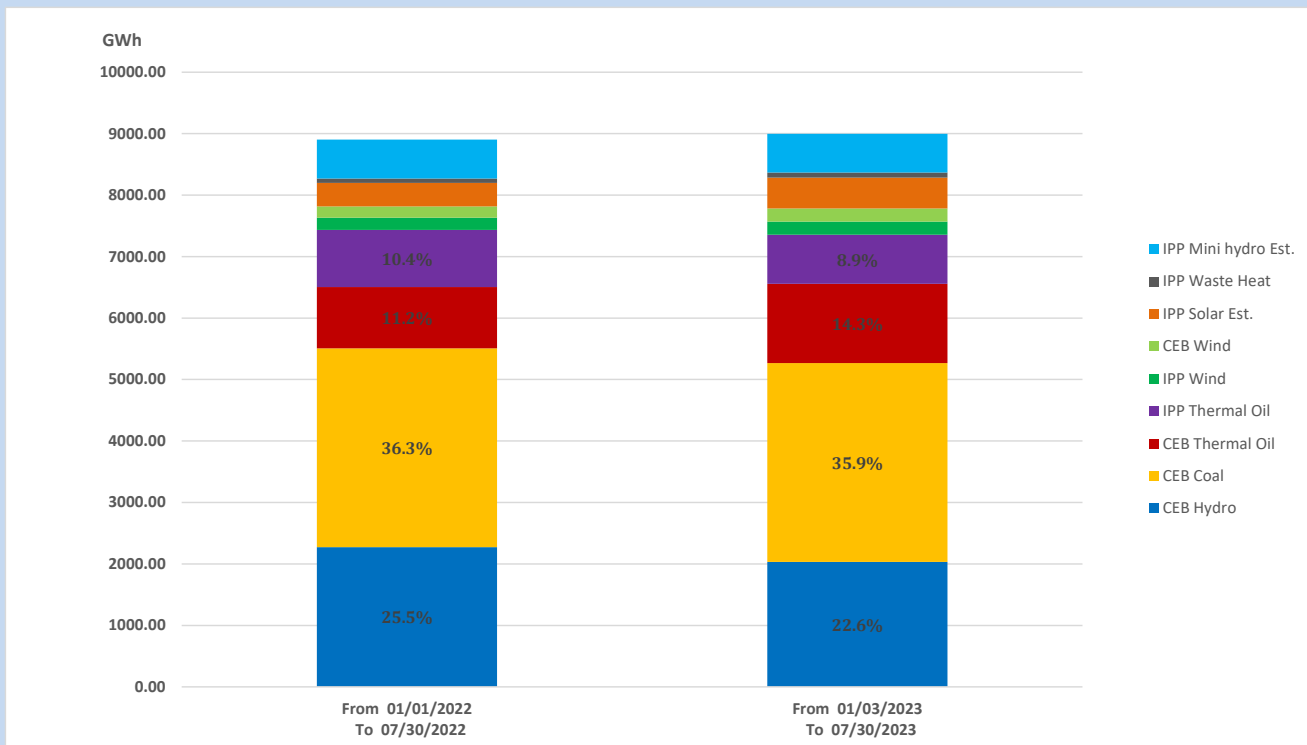
Solar Generation during

July 30, 2023

Based on Telemetered Power Stations only



15. Cumulative Dispatch Comparison with Last Year



Cumulative dispatch

From 01/01/2022 To 07/30/2022

9457 GWh

From 01/01/2023 To 07/30/2023

8944 GWh

The above figures are including contribution from roof top solar, non telemetered solar and mini hydro plants

Thermal Plant Fuel types

Power Station	Primary Fuel
CEB Thermal	
Sapugaskanda 1	Heavy Fuel
Sapugaskanda 2	Heavy Fuel
Kelanitissa Small Gas Turbines	Auto Diesel
GT 7 - Kelanitissa	Auto Diesel
Kelanitissa CCY	Naphtha or Diesel
Lakvijaya 1	Coal
Lakvijaya 2	Coal
Lakvijaya 3	Coal
Uthuru Janani	Heavy Fuel
Barge CEB	Heavy Fuel
KCCPS -2	Auto Diesel

Power Station	Primary Fuel
Private Thermal	
West Coast	Auto Diesel / Heavy Fuel

Major Incidents reported during the day

July 30, 2023

- 1) WCP availability limited to 130MW throughout the day due to GT-01 turbine washing.