

# Generation and Reservoirs Statistics

July 28, 2023



PUBLIC UTILITIES COMMISSION OF SRI LANKA

## 1. Daily Generation Mix in MWh

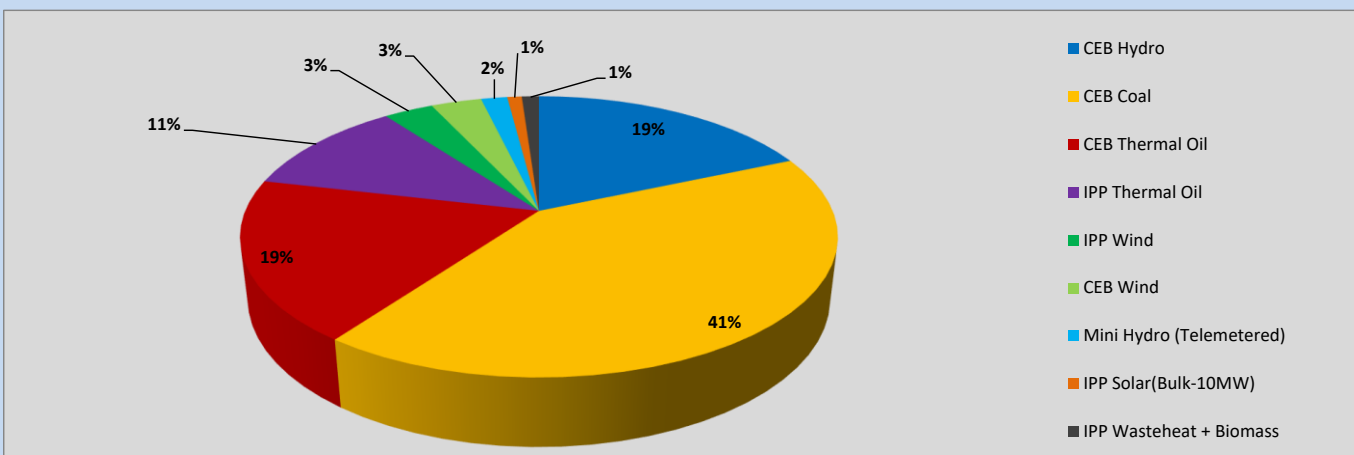


Table 01

CEB Hydro	7,901	MWh
CEB Coal	17,705	MWh
CEB Thermal Oil	7,925	MWh
IPP Thermal Oil	4,749	MWh
IPP Wind	1,366	MWh
CEB Wind	1,397	MWh
Mini Hydro (Telemetered)	724	MWh
IPP Solar (Bulk)	400	MWh
IPP Wasteheat + Biomass	471	MWh
<b>Total Generation (Excluding estimated figures)</b>	<b>42,638</b>	<b>MWh</b>
* Estimated unserved energy	0	MWh
* Estimated Mini Hydro (Non telemetered)	2786	MWh
* Estimated IPP Solar PV (Bulk 1-10MW)	304	MWh
* Estimated Solar Roof Top PV	1650	MWh
<b>Total Generation (Including estimated figures)</b>	<b>47,378</b>	<b>MWh</b>

\* Estimated figures of CEB generation report

## 2. Cumulative Dispatch

Following data excludes the contribution from roof top solar, non telemetered solar and mini hydro plants

Table 02 - Current Month

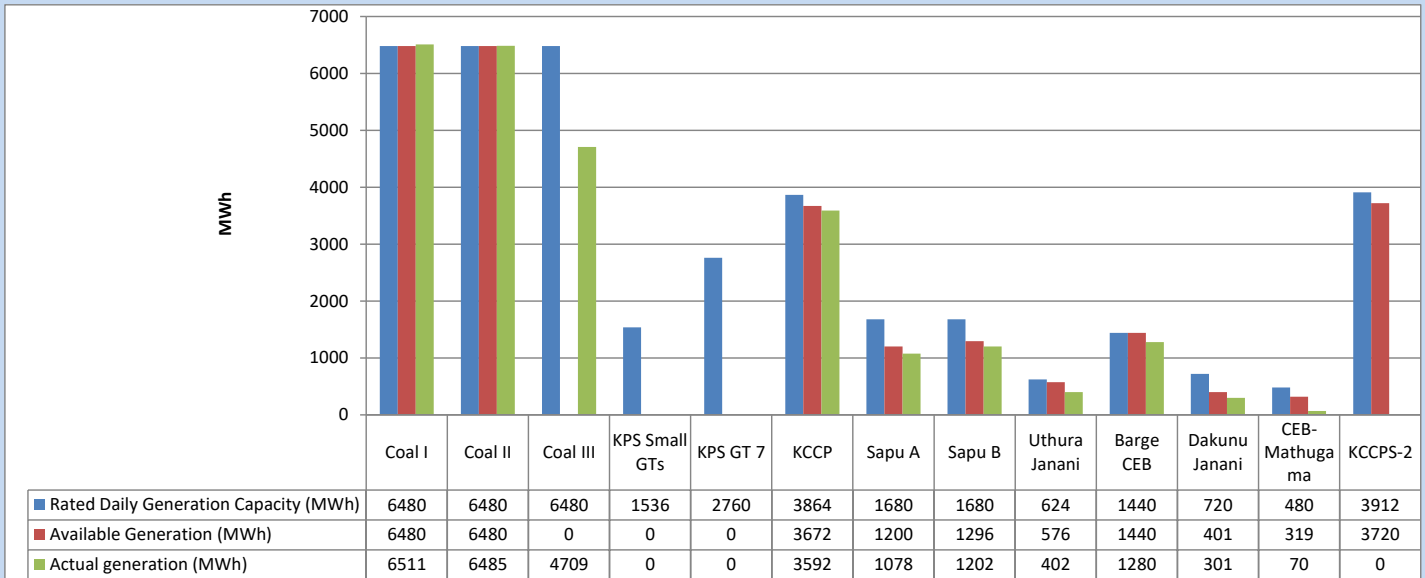
Category	Dispatch (GWh)	
CEB Hydro	286	26.02%
CEB Coal	328	29.89%
CEB Thermal Oil	192	17.47%
IPP Thermal	134	12.20%
SPP Wind	55	5.05%
CEB Wind	48	4.40%
Mini Hydro (Telemetered)	34	3.10%
IPP Solar (Bulk-10MW)	9	0.82%
IPP Wasteheat + BMP	12	1.05%
<b>Total</b>	<b>1,098</b>	

Table 03 - Current Year

Category	Dispatch (GWh)	
CEB Hydro	2,024	25.14%
CEB Coal	3,211	39.89%
CEB Thermal Oil	1,275	15.84%
IPP Thermal	788	9.79%
SPP Wind	207	2.57%
CEB Wind	212	2.64%
Mini Hydro (Telemetered)	200	2.48%
IPP Solar (Bulk-10MW)	62	0.77%
IPP Wasteheat	71	0.89%
<b>Total</b>	<b>8,051</b>	

### 3. CEB owned Thermal Plant Dispatch

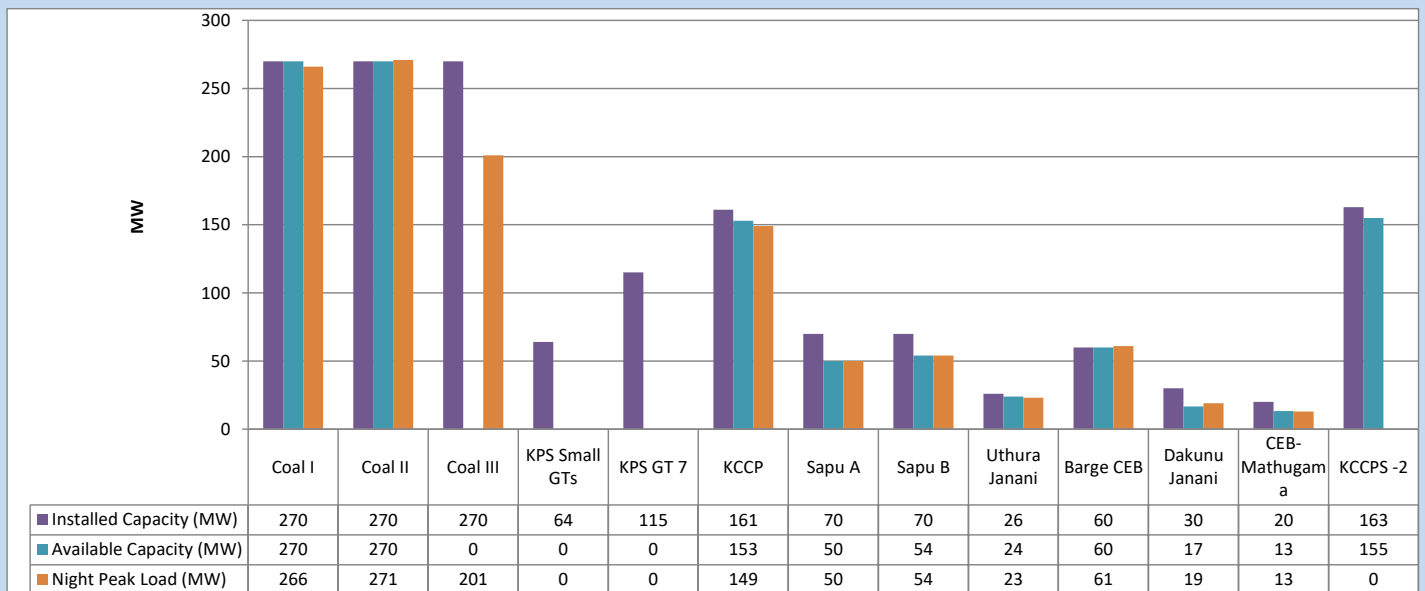
July 28, 2023



Available Generation is estimated based on plant availability at 6.00am on

July 29, 2023

### 4. CEB owned Thermal Plant Loading at the Night Peak

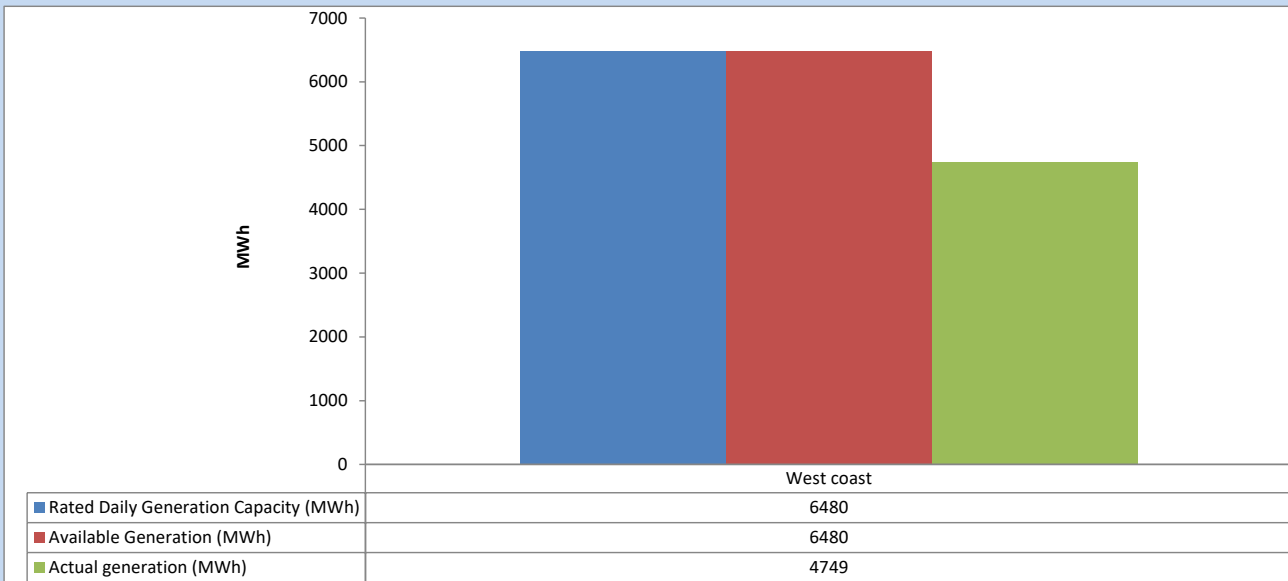


Plant availability is recorded at 6.00 am on

July 29, 2023

## 5. IPP owned Thermal Plant Dispatch

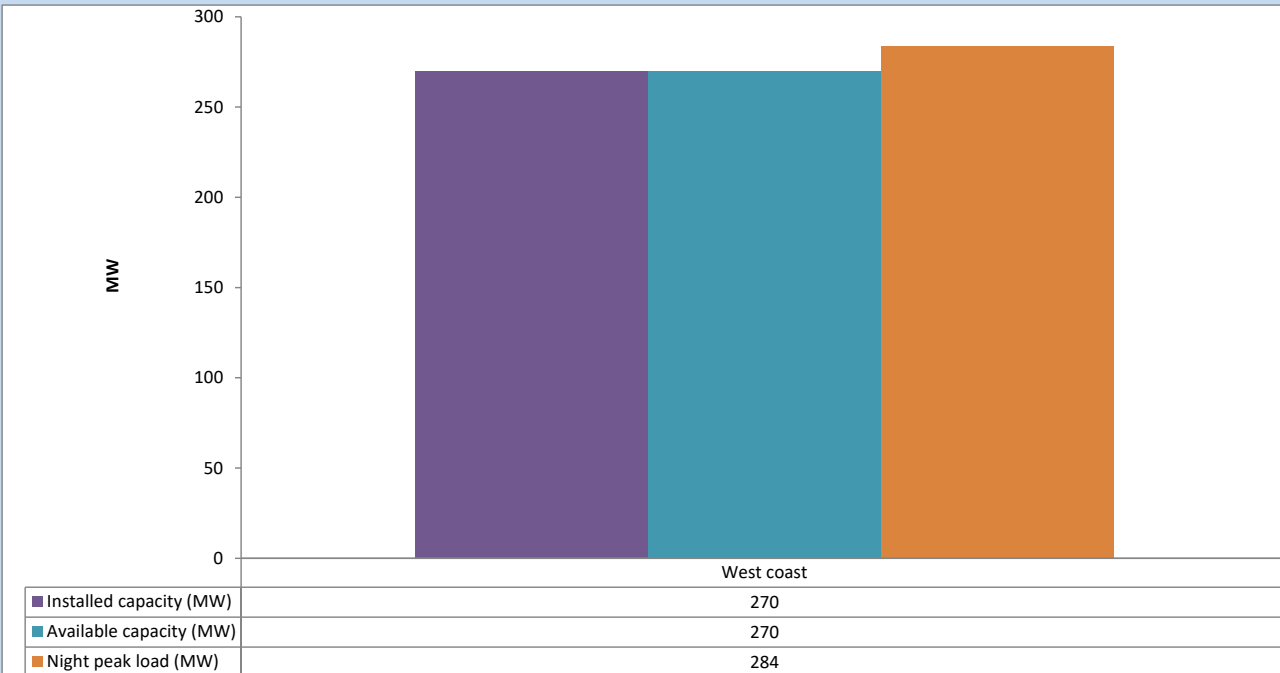
July 28, 2023



Available Generation is estimated based on plant availability at 6.00am on

July 29, 2023

## 6. IPP owned Thermal Plant Loading at the Night Peak

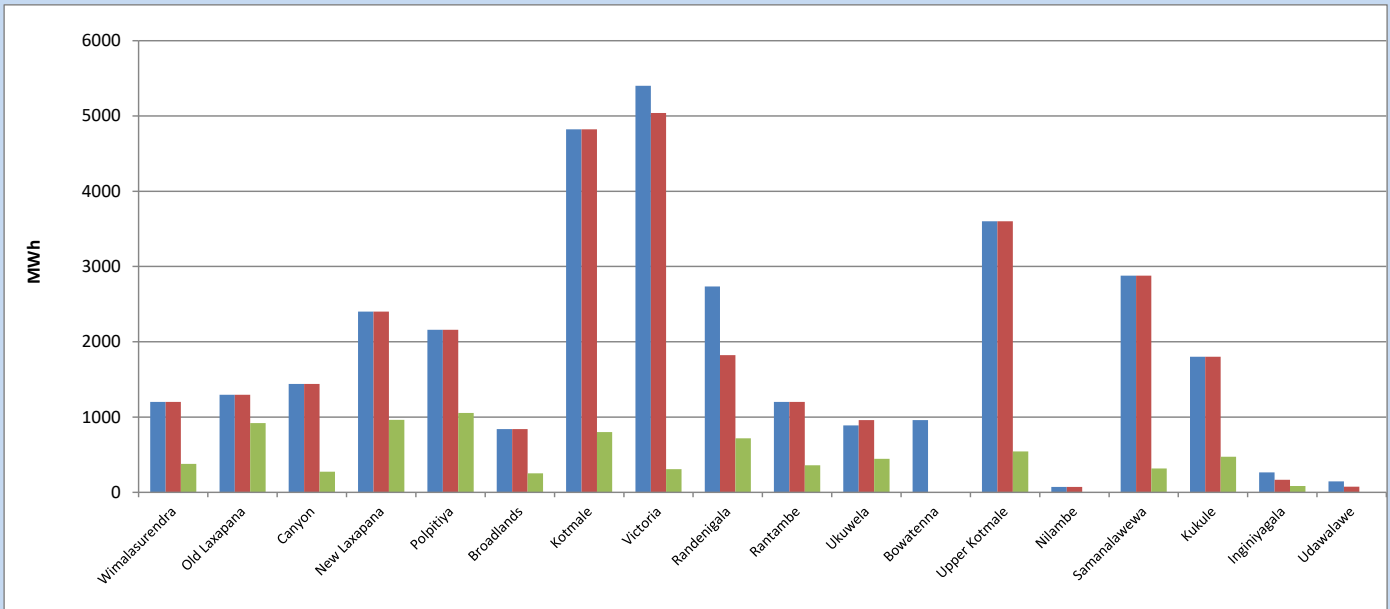


Plant availability is recorded at 6.00 am on

July 29, 2023

## 7. Major Hydro Plant Dispatch

July 28, 2023

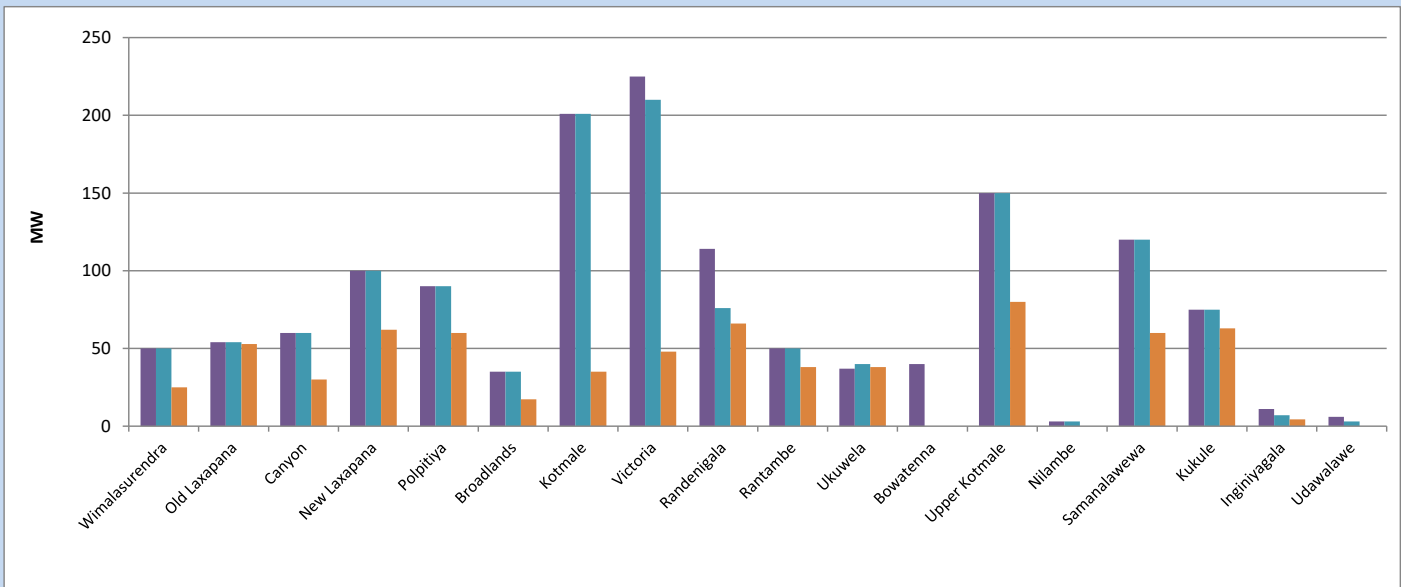


Available Generation is estimated based on plant availability at 6.00am on  
Broadlands power plant is operating in the Commissioning Stage

July 29, 2023

## 8. Major Hydro Plant Loading at Night Peak

July 28, 2023



Plant availability is recorded at 6.00 am on  
Broadlands power plant is operating in the Commissioning Stage

July 29, 2023

## 9. Summary of Major Plant performance

**Table 04**

Plant	Installed Capacity	Plant Availability	Night peak Load	Plant Dispatch
	(MW)	(MW)	(MW)	(MWh)
Wimalasurendra	50	50	25	379
Old Laxapana	54	54	53	919
Canyon	60	60	30	273
New Laxapana	100	100	62	964
Polpitiya	90	90	60	1,056
Broadlands	35	35	17	254
Kotmale	201	201	35	800
Victoria	225	210	48	309
Randenigala	114	76	66	719
Rantambe	50	50	38	361
Ukuwela	37	40	38	446
Bowatenna	40	0	0	0
Upper Kotmale	150	150	80	543
Nilambe	3	3	0	5
Samanalawewa	120	120	60	316
Kukule	75	75	63	474
Inginiyagala	11	7	4	83
Udawalawe	6	3	0	0
Puttalam Coal I	270	270	266	6,511
Puttalam Coal II	270	270	271	6,485
Puttalam Coal III	270	0	201	4,709
KPS Small GTs	64	0	0	0
KPS GT 7	115	0	0	0
KCCP	161	153	149	3,592
Sapugaskanda A	70	50	50	1,078
Sapugaskanda B	70	54	54	1,202
Uthura Janani	26	24	23	402
Barge CEB	60	60	61	1,280
CEB-Hambantota	30	17	19	301
CEB-Mathugama	20	13	13	70
ACE Matara	24	0	0	0
Asia Power	50	0	0	0
KCCPS -2	163	155	0	0
West Coast	270	270	284	4,749
Nothern Power	36	0	0	0
ACE Embilipitiya	93	0	0	0
<b>Total</b>	<b>3,483</b>	<b>2,660</b>	<b>2,255</b>	<b>42,638</b>

Plant availability is the availability recorded at 6 am on

July 29, 2023

### 10. Contribution to the Night Peak in MW

July 28, 2023

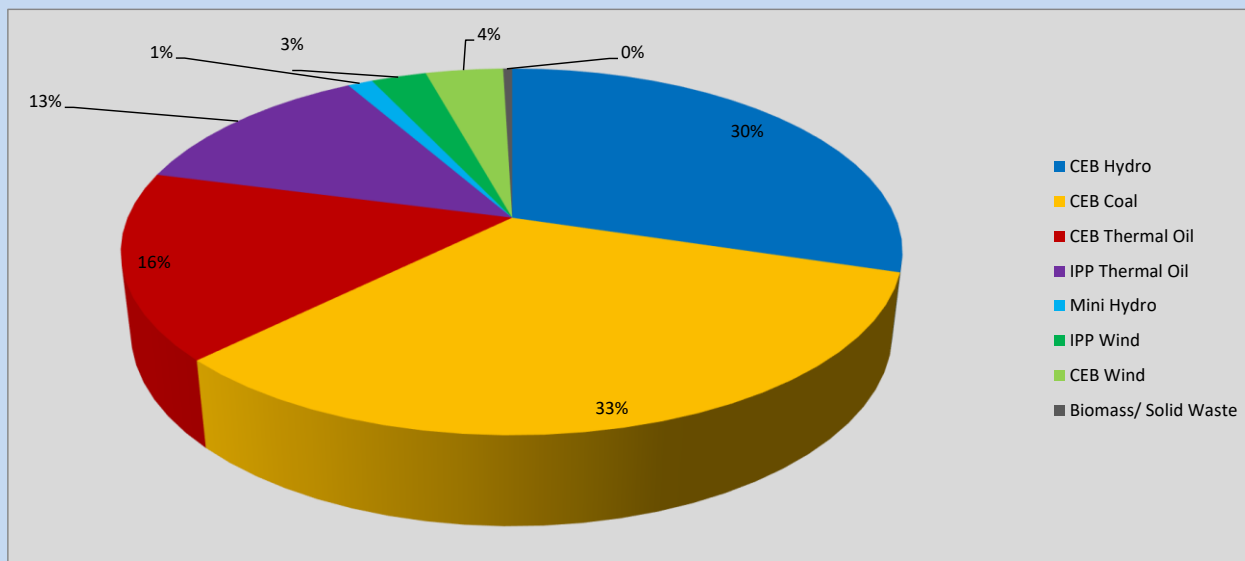


Table 05

CEB Hydro	666	MW
CEB Coal	738	MW
CEB Thermal Oil	369	MW
IPP Thermal Oil	284	MW
Mini Hydro (Telemetered)	28	MW
IPP Wind	61.3	MW
CEB Wind	85.9	MW
Biomass/ Solid Waste	10	MW

### Recorded Peak Demand Data

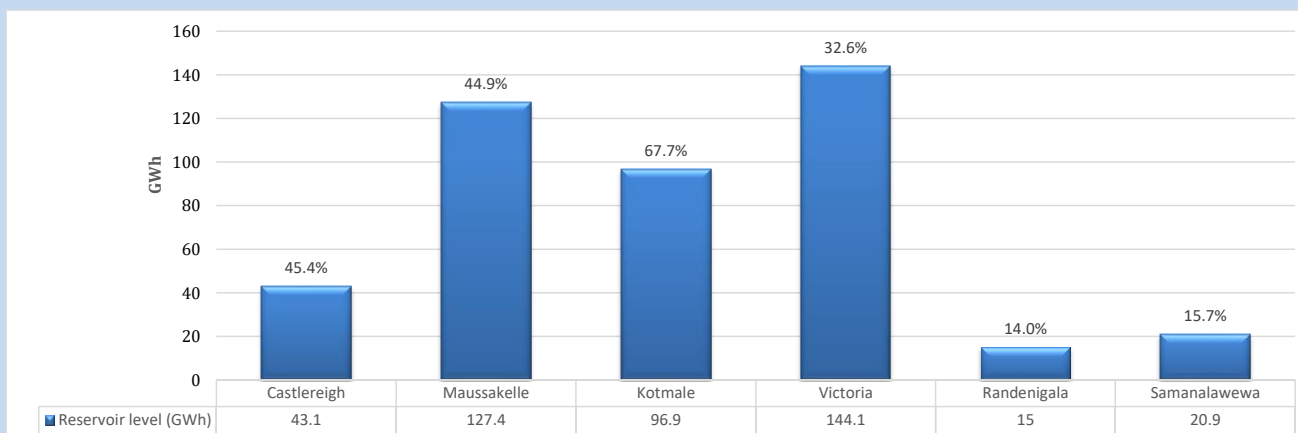
Table 06

Night Peak*	2,242	MW
Day Peak Maximum Demand	1,975	MW
Day Peak Minimum Demand	1,653	MW
Off Peak Minimum Demand	1,330	MW

Above figures are excluding contribution from roof top solar, non telemetered solar and mini hydro plants

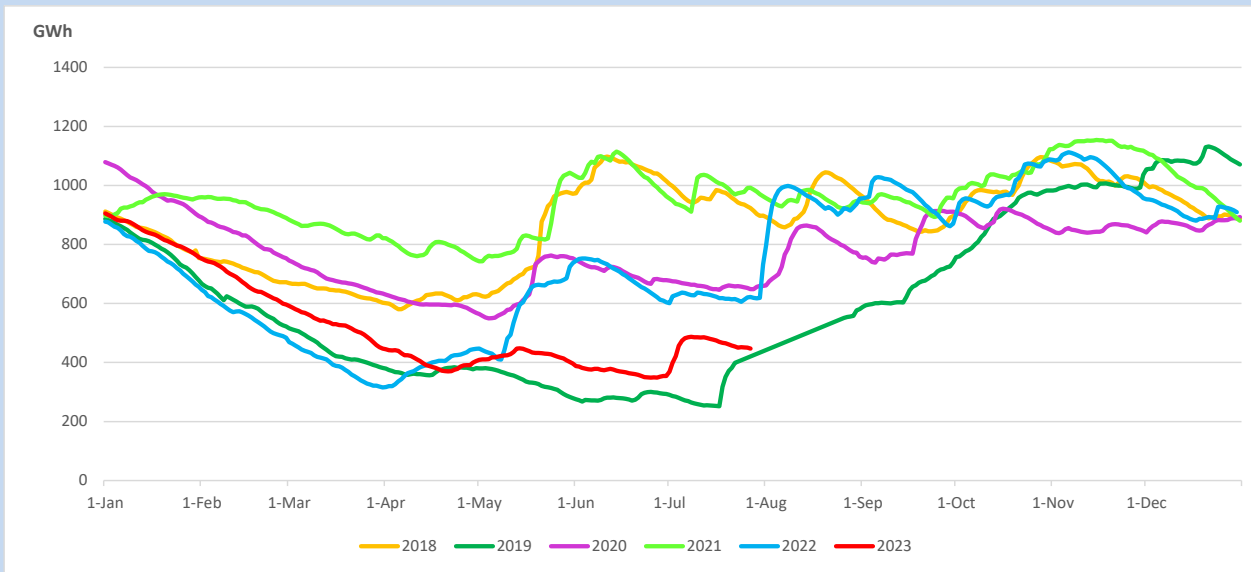
### Reservoir Levels -

as at 06.00 Hr on July 29, 2023

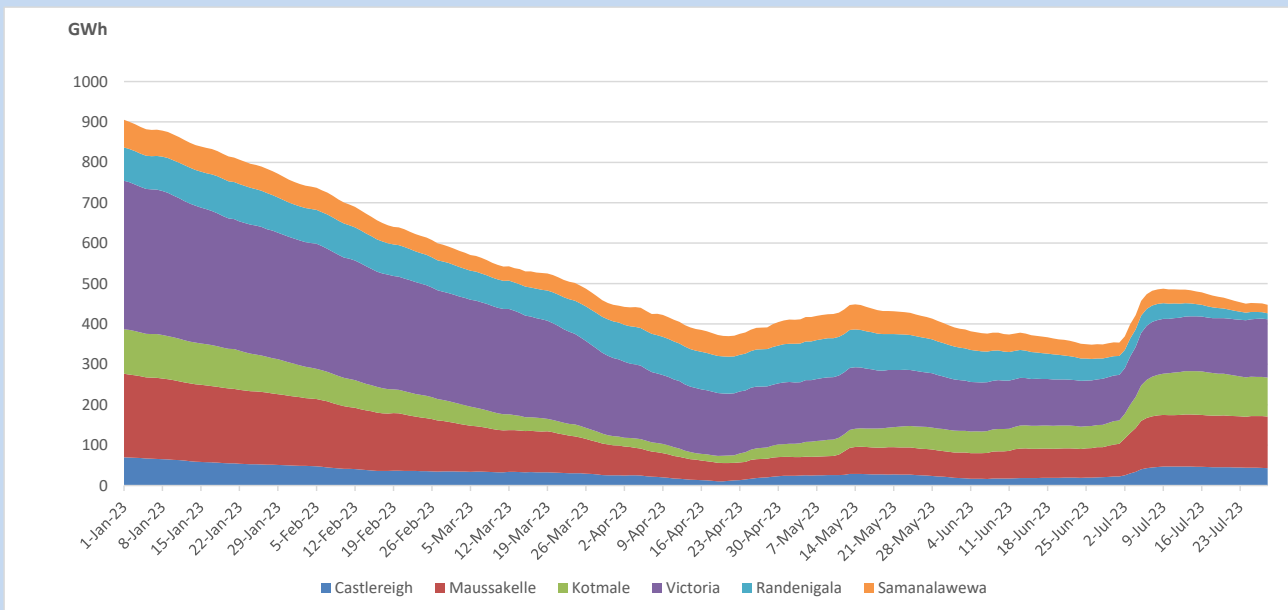


Total Reservoir Level 447.4 GWh  
 % of Total capacity 37.2%

## 11. Comparison of Total Reservoir Storage Levels with Past Years

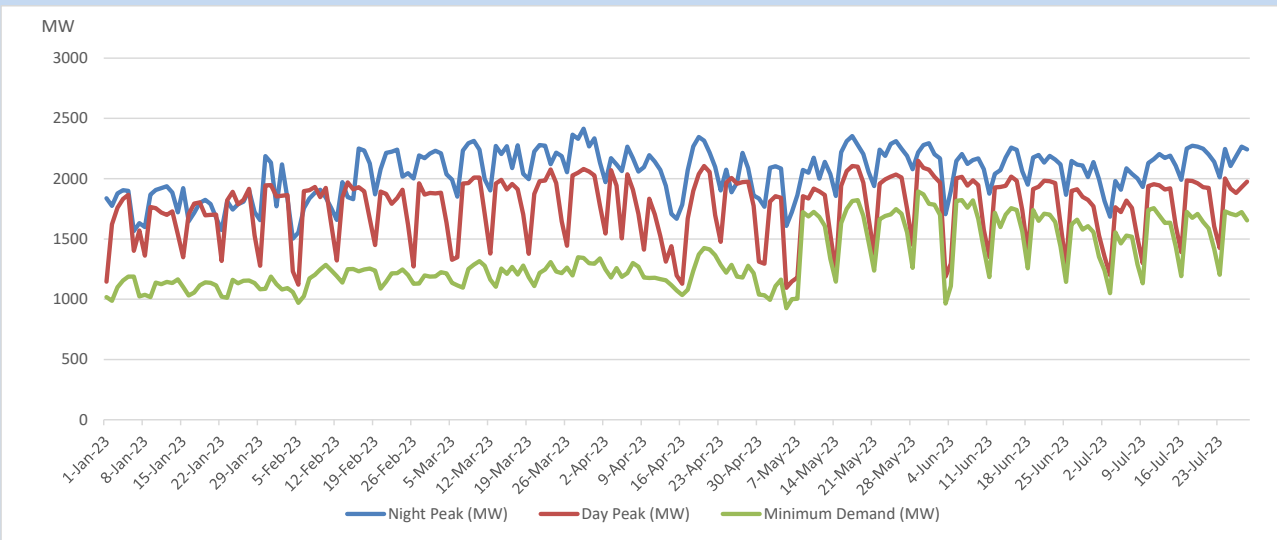


## 12. Variation of Major Hydro Reservoir Levels in the current year (GWh)





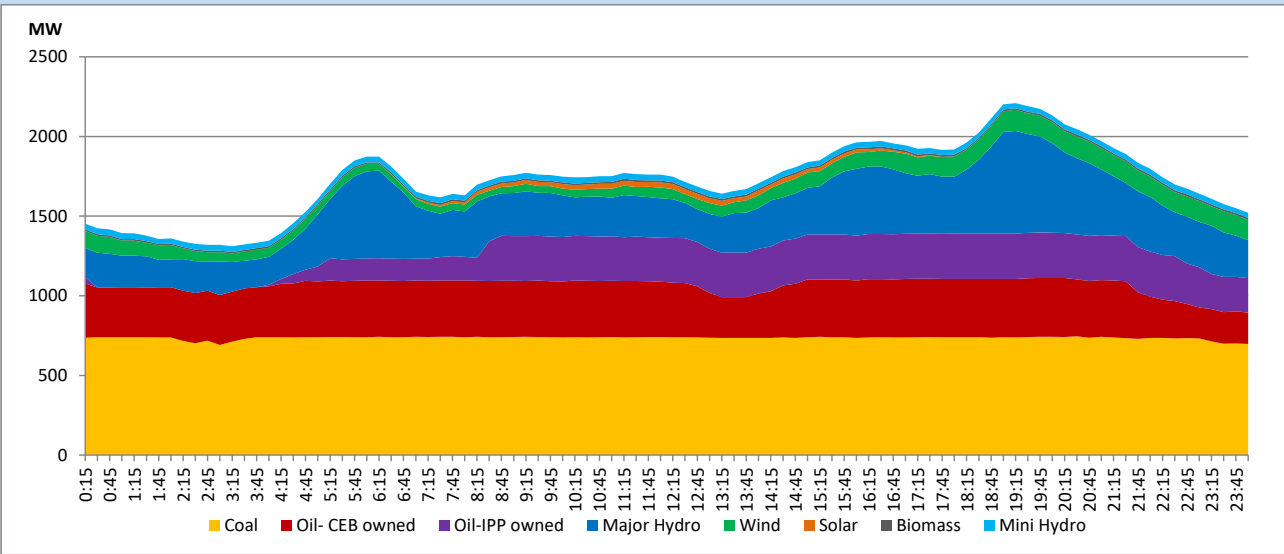
### 13. Variation of Demand during the current year



The above figures are excluding contribution from roof top solar, non telemetered solar and mini hydro plants

### 14. Daily Load Curve

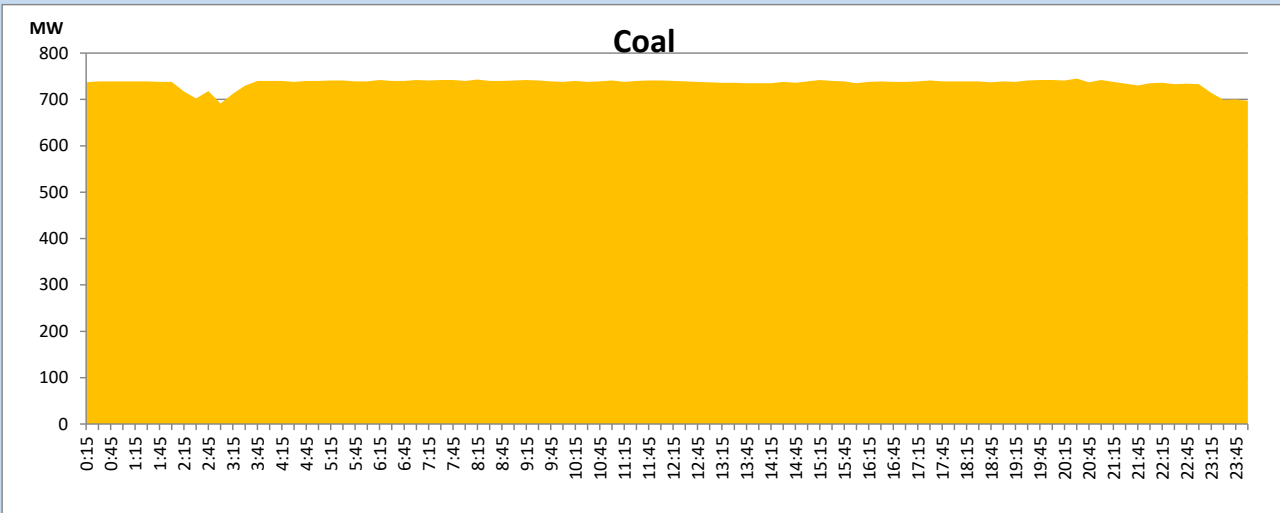
July 28, 2023



Solar and wind data is based on Telemetered Power Stations only

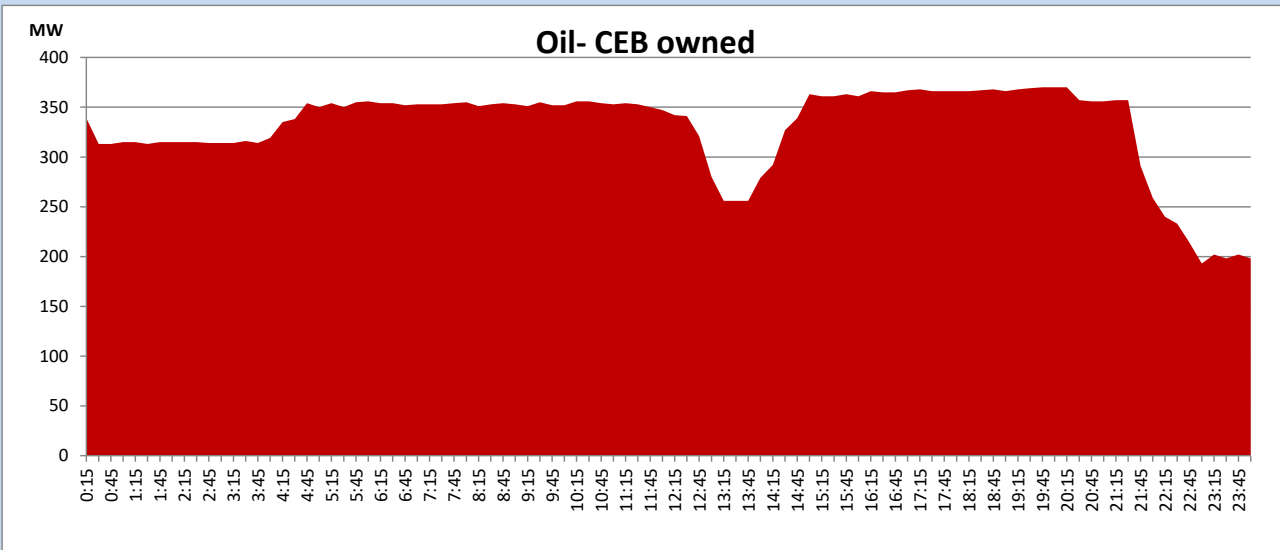
## Coal Generation during

July 28, 2023



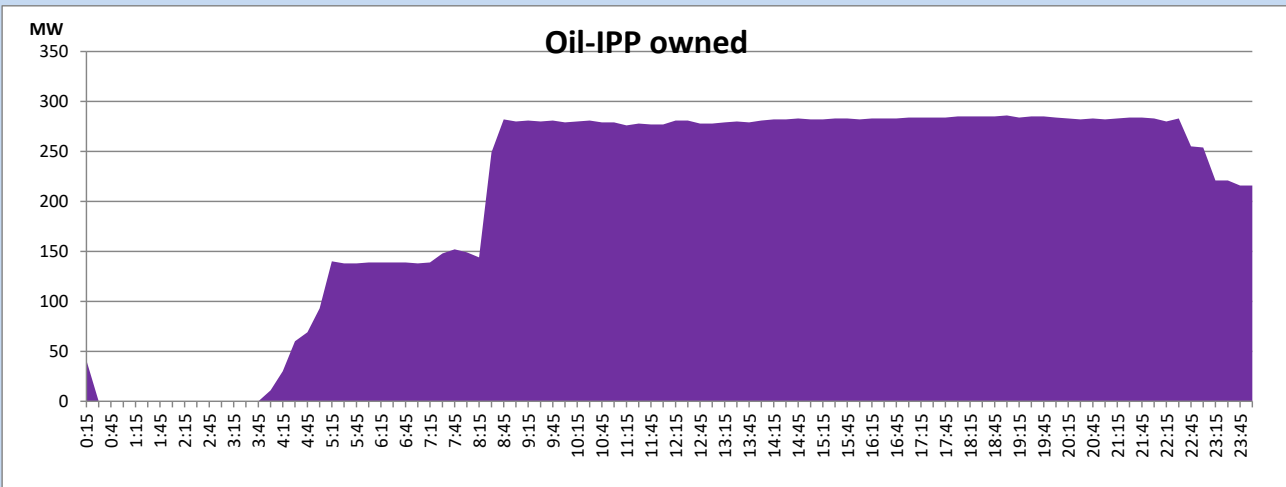
## CEB Oil Plant Generation during

July 28, 2023



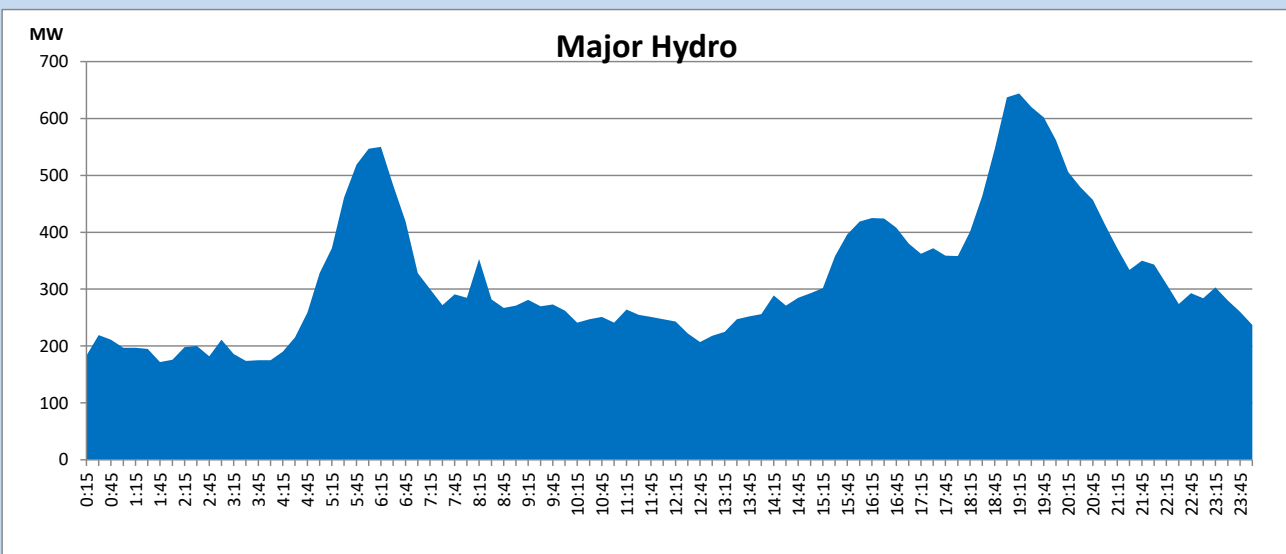
## IPP Oil Plant Generation during

July 28, 2023



## Major Hydro Generation during

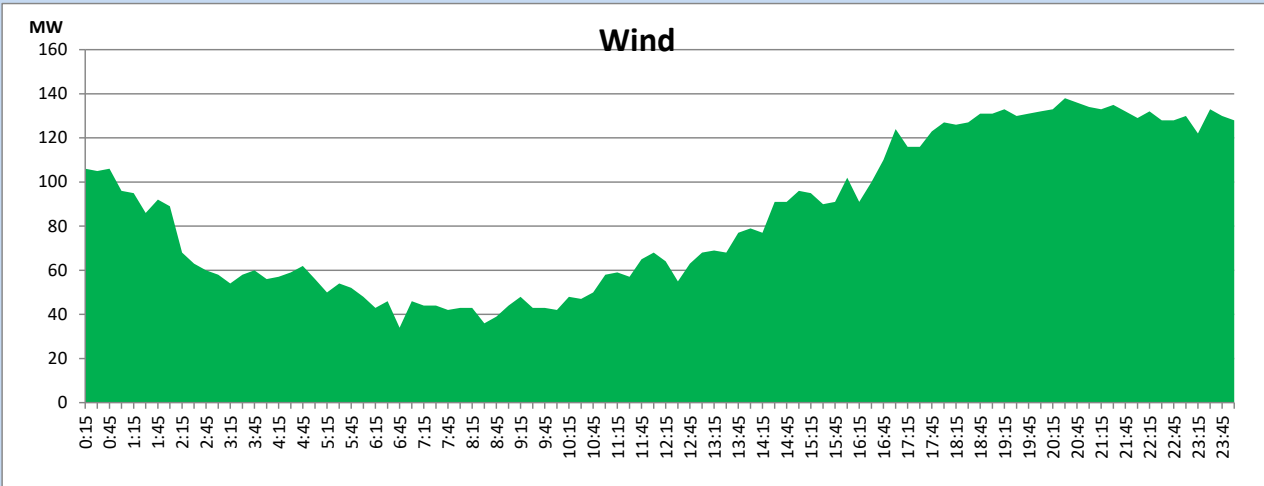
July 28, 2023



## Wind Generation during

July 28, 2023

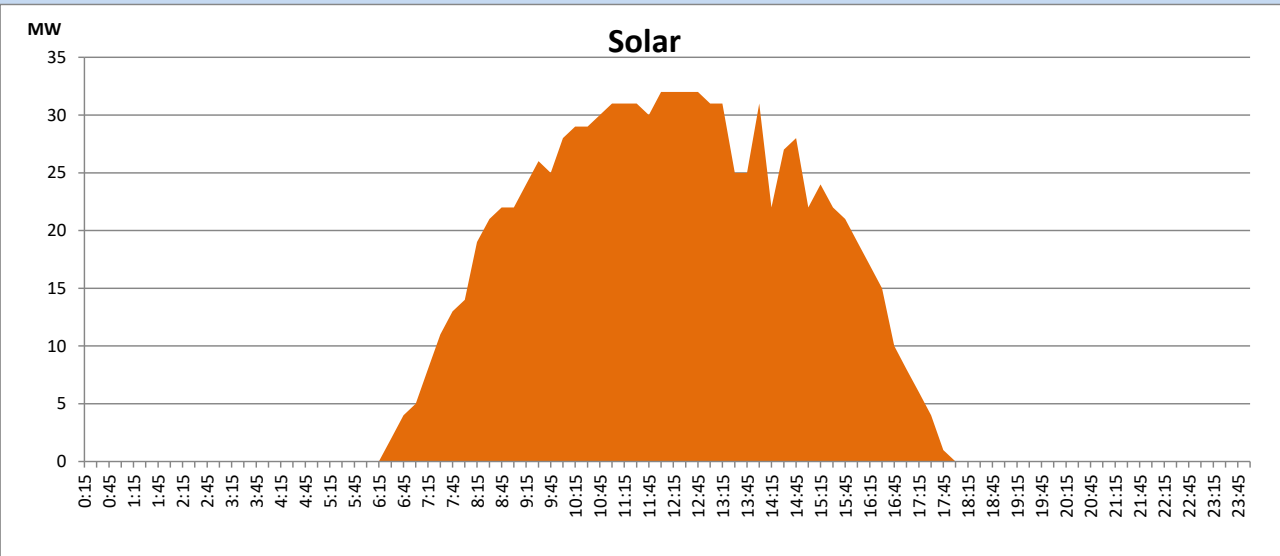
Based on Telemetered Power Stations only



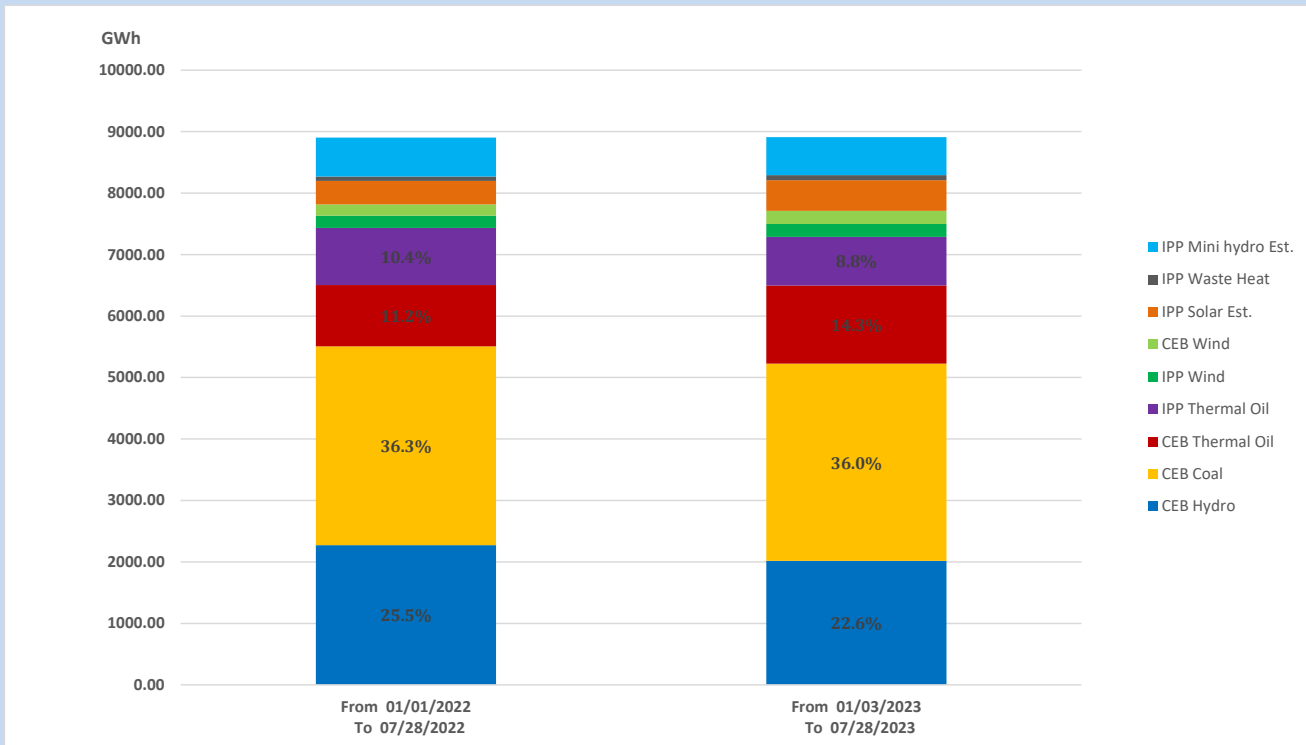
## Solar Generation during

July 28, 2023

Based on Telemetered Power Stations only



## 15. Cumulative Dispatch Comparison with Last Year



### Cumulative dispatch

From 01/01/2022 To 07/28/2022

9373 GWh

From 01/01/2023 To 07/28/2023

8851 GWh

The above figures are including contribution from roof top solar, non telemetered solar and mini hydro plants

**Thermal Plant Fuel types**

<b>Power Station</b>	<b>Primary Fuel</b>
<b>CEB Thermal</b>	
<b>Sapugaskanda 1</b>	Heavy Fuel
<b>Sapugaskanda 2</b>	Heavy Fuel
<b>Kelanitissa Small Gas Turbines</b>	Auto Diesel
<b>GT 7 - Kelanitissa</b>	Auto Diesel
<b>Kelanitissa CCY</b>	Naphtha or Diesel
<b>Lakvijaya 1</b>	Coal
<b>Lakvijaya 2</b>	Coal
<b>Lakvijaya 3</b>	Coal
<b>Uthuru Janani</b>	Heavy Fuel
<b>Barge CEB</b>	Heavy Fuel
<b>KCCPS -2</b>	Auto Diesel

<b>Power Station</b>	<b>Primary Fuel</b>
<b>Private Thermal</b>	
<b>West Coast</b>	Auto Diesel / Heavy Fuel

**Major Incidents reported during the day**

July 28, 2023

1) LVPS unit 03 desynchronized at 03:29 (29.07.2023) for a level A overhaul.