

Generation and Reservoirs Statistics

July 27, 2023



PUBLIC UTILITIES COMMISSION OF SRI LANKA

1. Daily Generation Mix in MWh

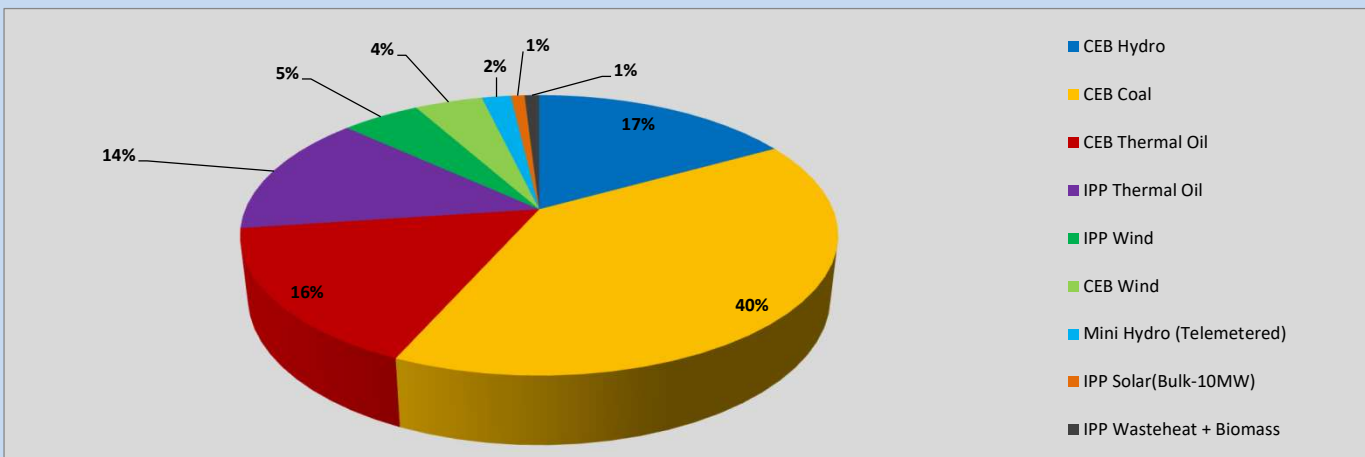


Table 01

CEB Hydro	7,221	MWh
CEB Coal	16,977	MWh
CEB Thermal Oil	6,919	MWh
IPP Thermal Oil	5,974	MWh
IPP Wind	2,167	MWh
CEB Wind	1,878	MWh
Mini Hydro (Telemetered)	801	MWh
IPP Solar (Bulk)	378	MWh
IPP Wasteheat + Biomass	405	MWh
Total Generation (Excluding estimated figures)	42,720	MWh
* Estimated unserved energy	0	MWh
* Estimated Mini Hydro (Non telemetered)	2709	MWh
* Estimated IPP Solar PV (Bulk 1-10MW)	304	MWh
* Estimated Solar Roof Top PV	1650	MWh
Total Generation (Including estimated figures)	47,383	MWh

* Estimated figures of CEB generation report

2. Cumulative Dispatch

Following data excludes the contribution from roof top solar, non telemetered solar and mini hydro plants

Table 02 - Current Month

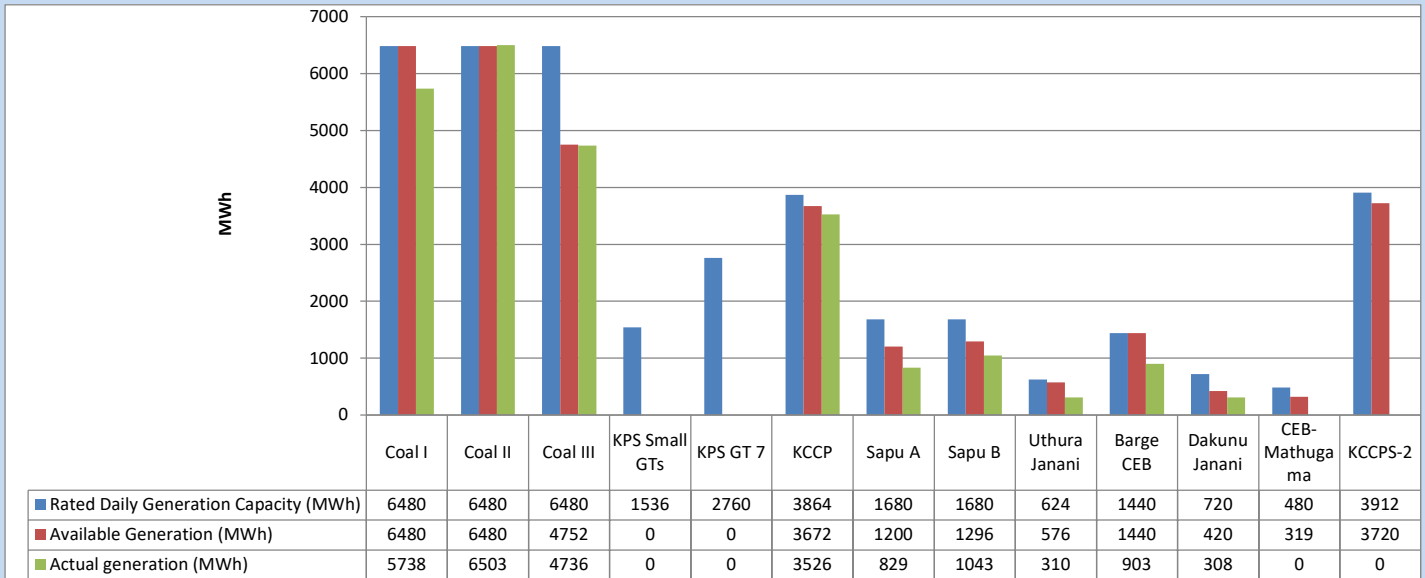
Category	Dispatch (GWh)	
CEB Hydro	278	26.32%
CEB Coal	311	29.42%
CEB Thermal Oil	184	17.43%
IPP Thermal	129	12.24%
SPP Wind	54	5.12%
CEB Wind	47	4.44%
Mini Hydro (Telemetered)	33	3.16%
IPP Solar (Bulk-10MW)	9	0.82%
IPP Wasteheat + BMP	11	1.04%
Total	1,056	

Table 03 - Current Year

Category	Dispatch (GWh)	
CEB Hydro	2,016	25.17%
CEB Coal	3,193	39.88%
CEB Thermal Oil	1,268	15.83%
IPP Thermal	783	9.78%
SPP Wind	205	2.56%
CEB Wind	211	2.63%
Mini Hydro (Telemetered)	199	2.49%
IPP Solar (Bulk-10MW)	62	0.77%
IPP Wasteheat	71	0.89%
Total	8,008	

3. CEB owned Thermal Plant Dispatch

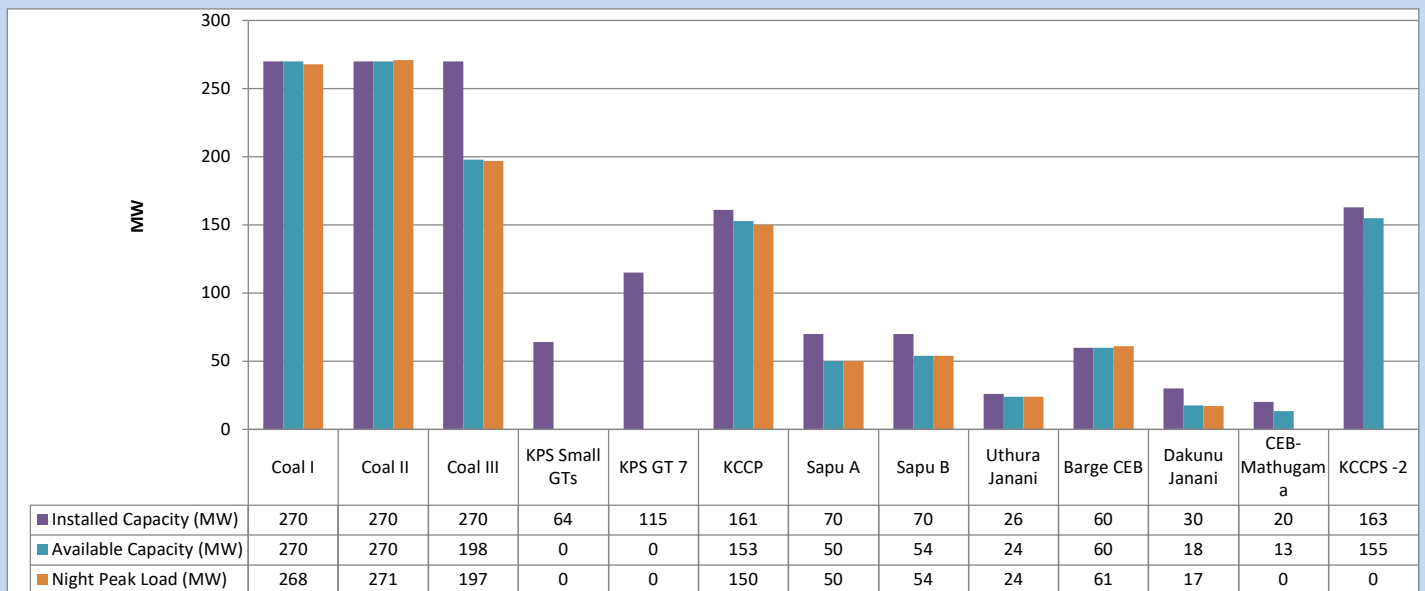
July 27, 2023



Available Generation is estimated based on plant availability at 6.00am on

July 28, 2023

4. CEB owned Thermal Plant Loading at the Night Peak

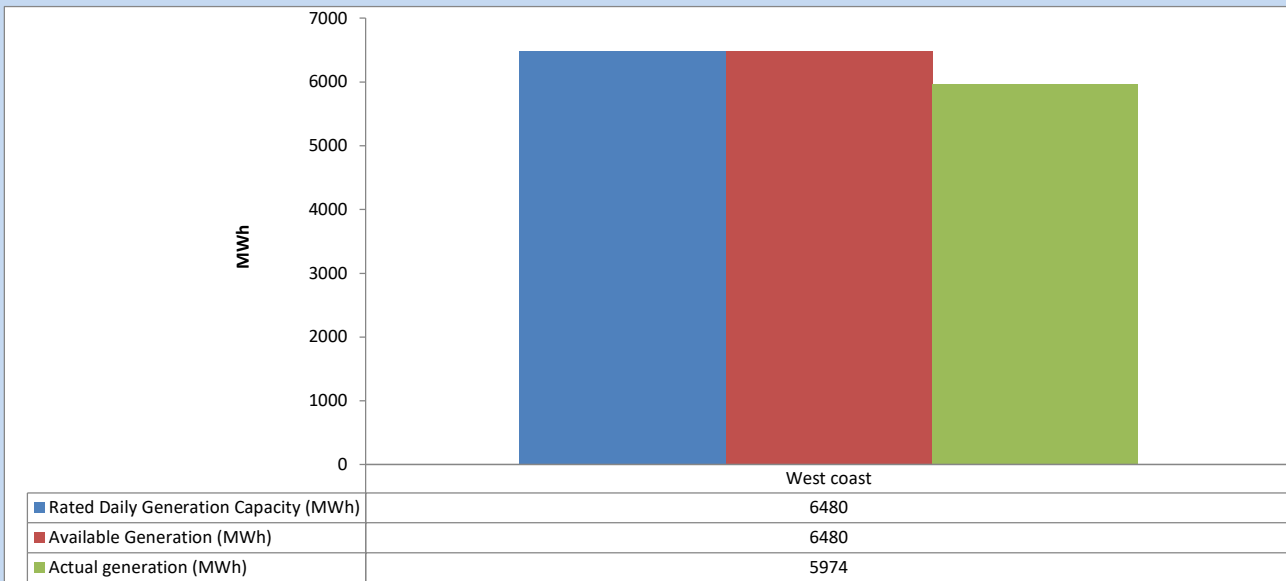


Plant availability is recorded at 6.00 am on

July 28, 2023

5. IPP owned Thermal Plant Dispatch

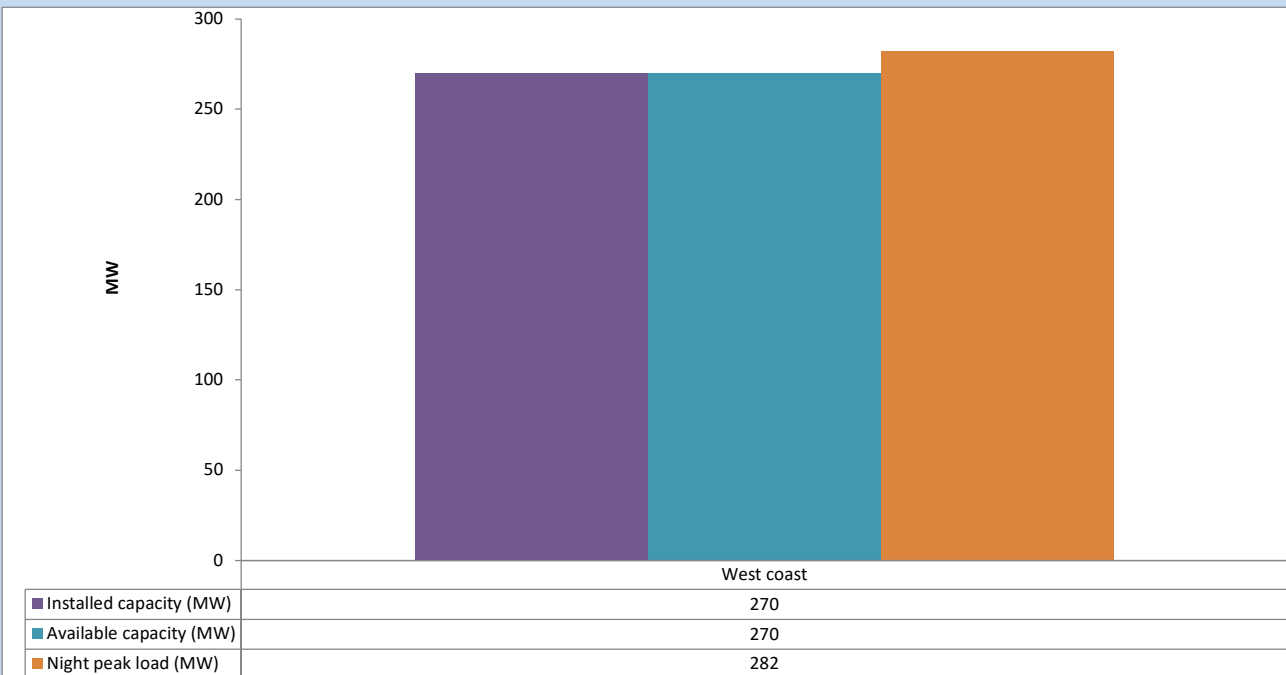
July 27, 2023



Available Generation is estimated based on plant availability at 6.00am on

July 28, 2023

6. IPP owned Thermal Plant Loading at the Night Peak

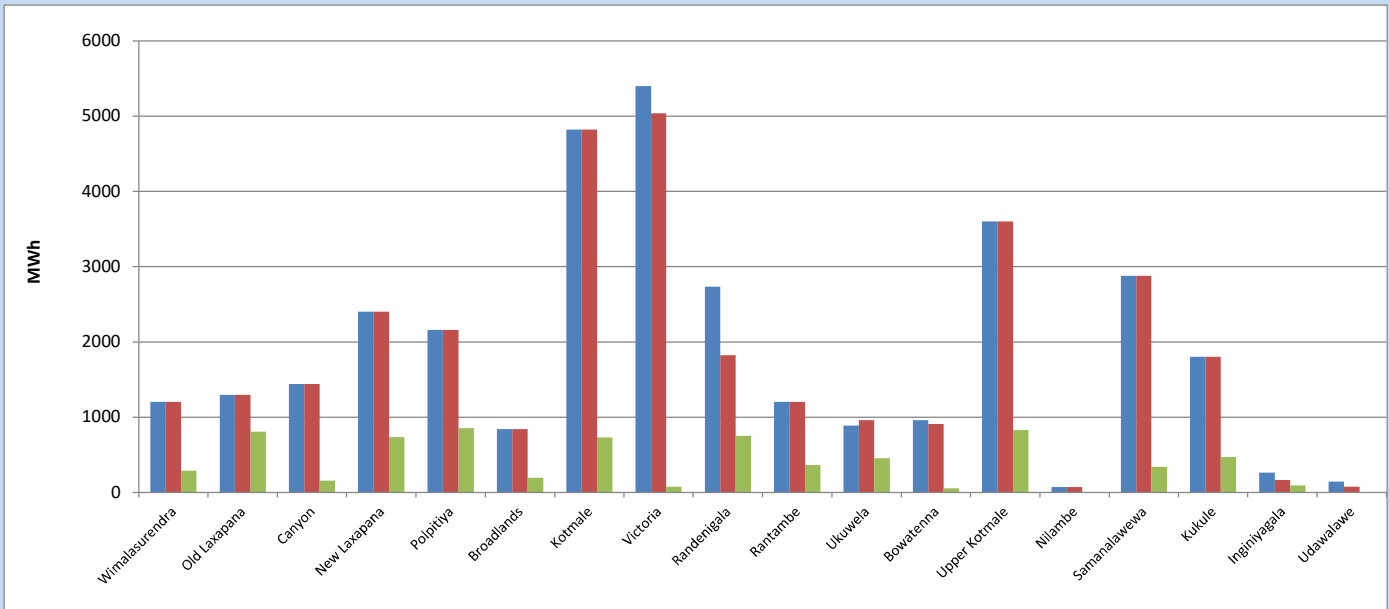


Plant availability is recorded at 6.00 am on

July 28, 2023

7. Major Hydro Plant Dispatch

July 27, 2023

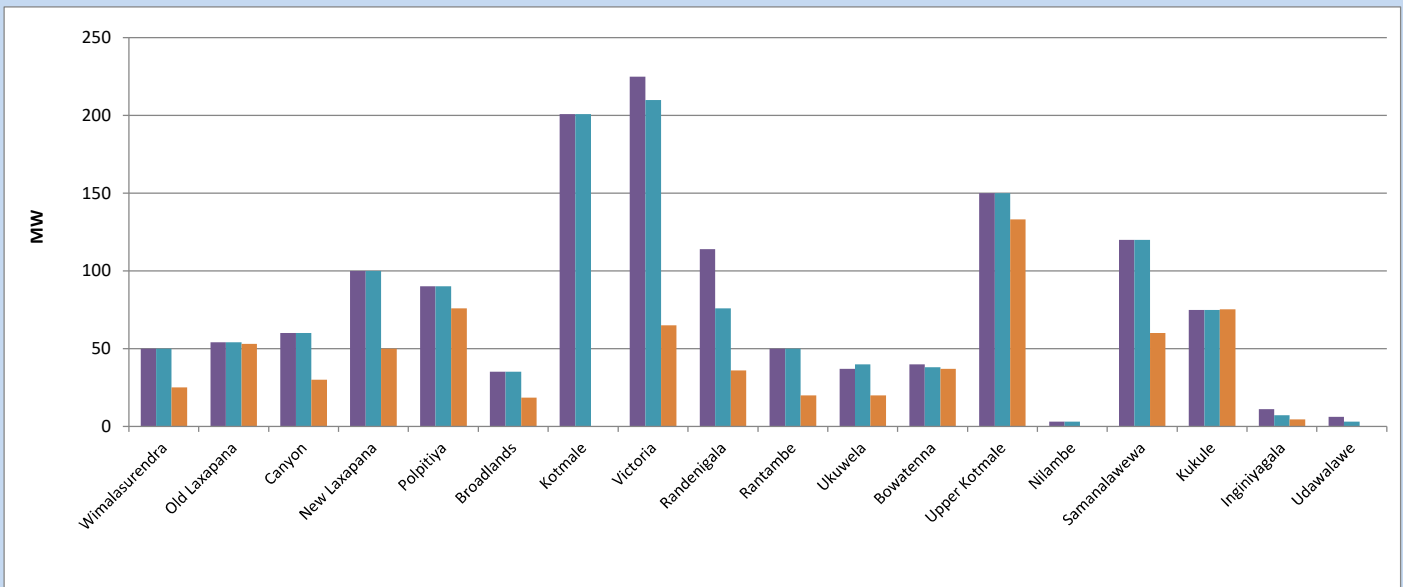


Available Generation is estimated based on plant availability at 6.00am on
Broadlands power plant is operating in the Commissioning Stage

July 28, 2023

8. Major Hydro Plant Loading at Night Peak

July 27, 2023



Plant availability is recorded at 6.00 am on
Broadlands power plant is operating in the Commissioning Stage

July 28, 2023

9. Summary of Major Plant performance

Table 04

Plant	Installed Capacity	Plant Availability	Night peak Load	Plant Dispatch
	(MW)	(MW)	(MW)	(MWh)
Wimalasurendra	50	50	25	288
Old Laxapana	54	54	53	807
Canyon	60	60	30	157
New Laxapana	100	100	50	736
Polpitiya	90	90	76	855
Broadlands	35	35	18	197
Kotmale	201	201	0	730
Victoria	225	210	65	74
Randenigala	114	76	36	755
Rantambe	50	50	20	365
Ukuwela	37	40	20	455
Bowatenna	40	38	37	54
Upper Kotmale	150	150	133	832
Nilambe	3	3	0	6
Samanalawewa	120	120	60	342
Kukule	75	75	75	474
Inginiyagala	11	7	4	94
Udawalawe	6	3	0	0
Puttalam Coal I	270	270	268	5,738
Puttalam Coal II	270	270	271	6,503
Puttalam Coal III	270	198	197	4,736
KPS Small GTs	64	0	0	0
KPS GT 7	115	0	0	0
KCCP	161	153	150	3,526
Sapugaskanda A	70	50	50	829
Sapugaskanda B	70	54	54	1,043
Uthura Janani	26	24	24	310
Barge CEB	60	60	61	903
CEB-Hambantota	30	18	17	308
CEB-Mathugama	20	13	0	0
ACE Matara	24	0	0	0
Asia Power	50	0	0	0
KCCPS -2	163	155	0	0
West Coast	270	270	282	5,974
Nothern Power	36	0	0	0
ACE Embilipitiya	93	0	0	0
Total	3,483	2,897	2,262	42,720

Plant availability is the availability recorded at 6 am on

July 28, 2023

10. Contribution to the Night Peak in MW

July 27, 2023

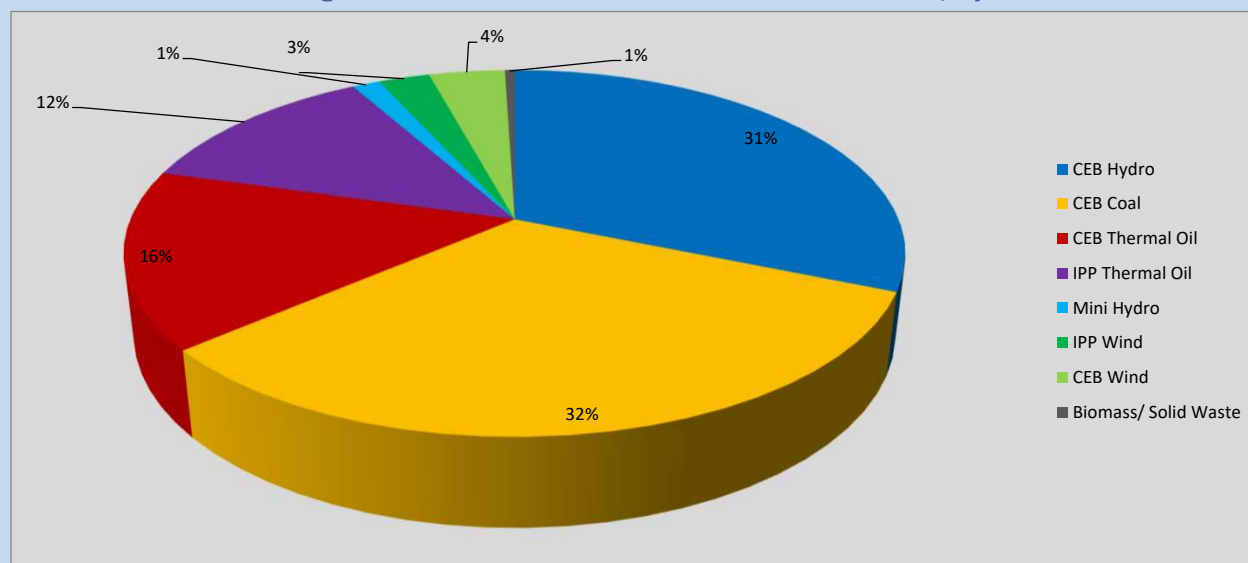


Table 05

CEB Hydro	708	MW
CEB Coal	736	MW
CEB Thermal Oil	356	MW
IPP Thermal Oil	282	MW
Mini Hydro (Telemetered)	31	MW
IPP Wind	57.4	MW
CEB Wind	85.1	MW
Biomass/ Solid Waste	11	MW

Recorded Peak Demand Data

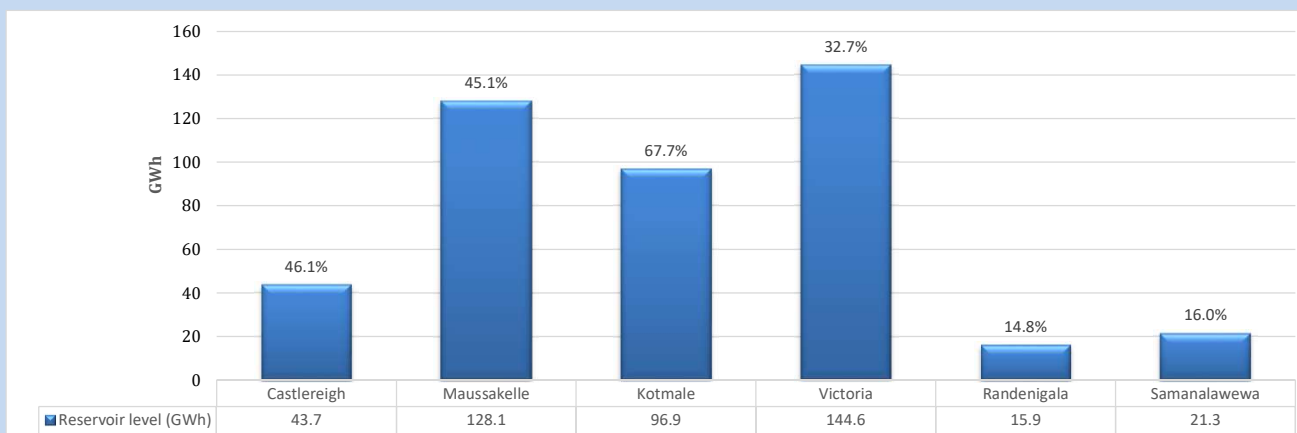
Table 06

Night Peak*	2,267	MW
Day Peak Maximum Demand	1,930	MW
Day Peak Minimum Demand	1,723	MW
Off Peak Minimum Demand	1,273	MW

Above figures are excluding contribution from roof top solar, non telemetered solar and mini hydro plants

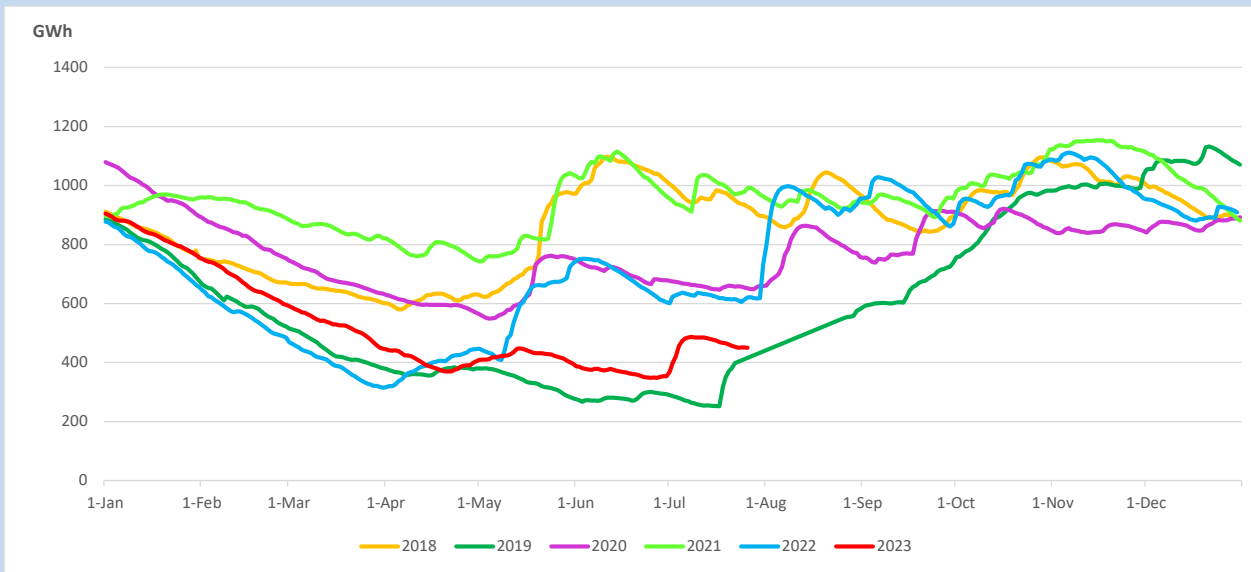
Reservoir Levels -

as at 06.00 Hr on July 28, 2023

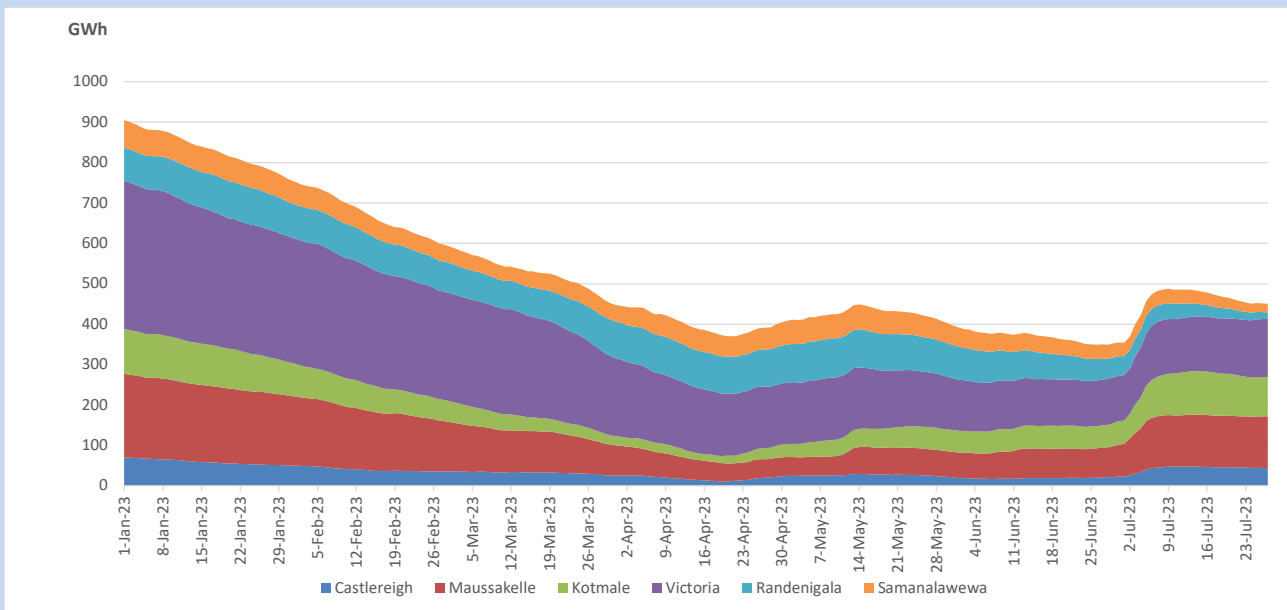


Total Reservoir Level 450.5 GWh
 % of Total capacity 37.4%

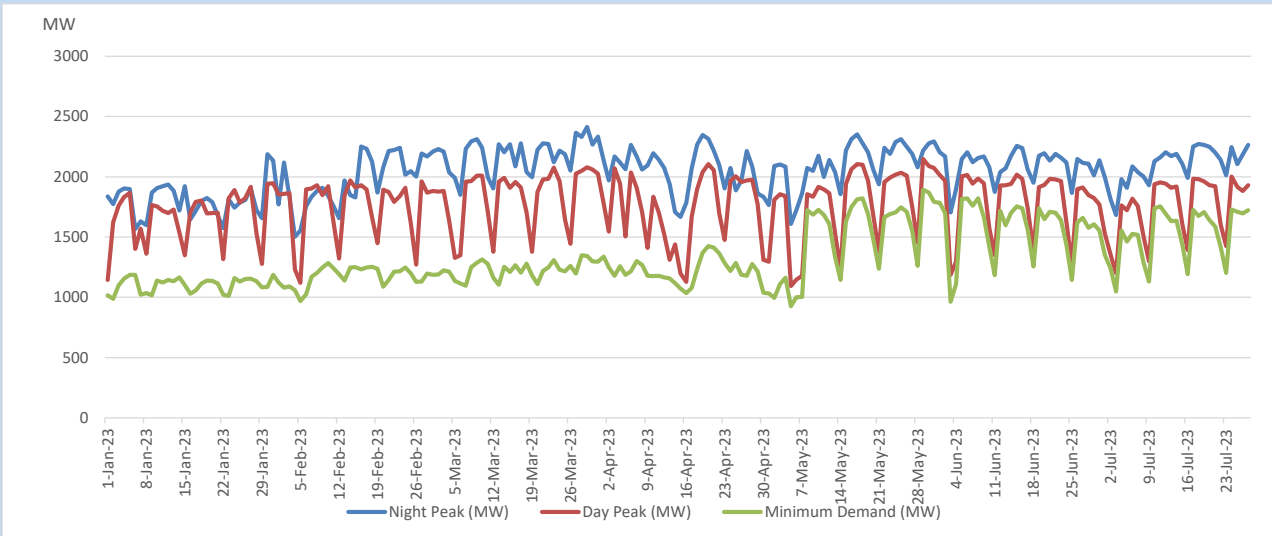
11. Comparison of Total Reservoir Storage Levels with Past Years



12. Variation of Major Hydro Reservoir Levels in the current year (GWh)



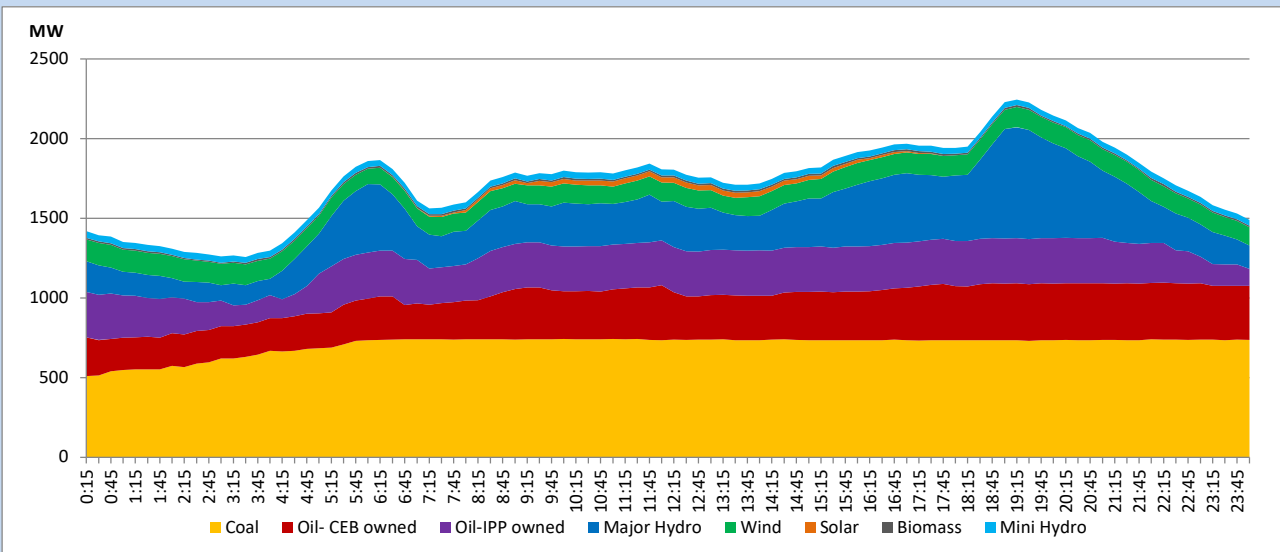
13. Variation of Demand during the current year



The above figures are excluding contribution from roof top solar, non telemetered solar and mini hydro plants

14. Daily Load Curve

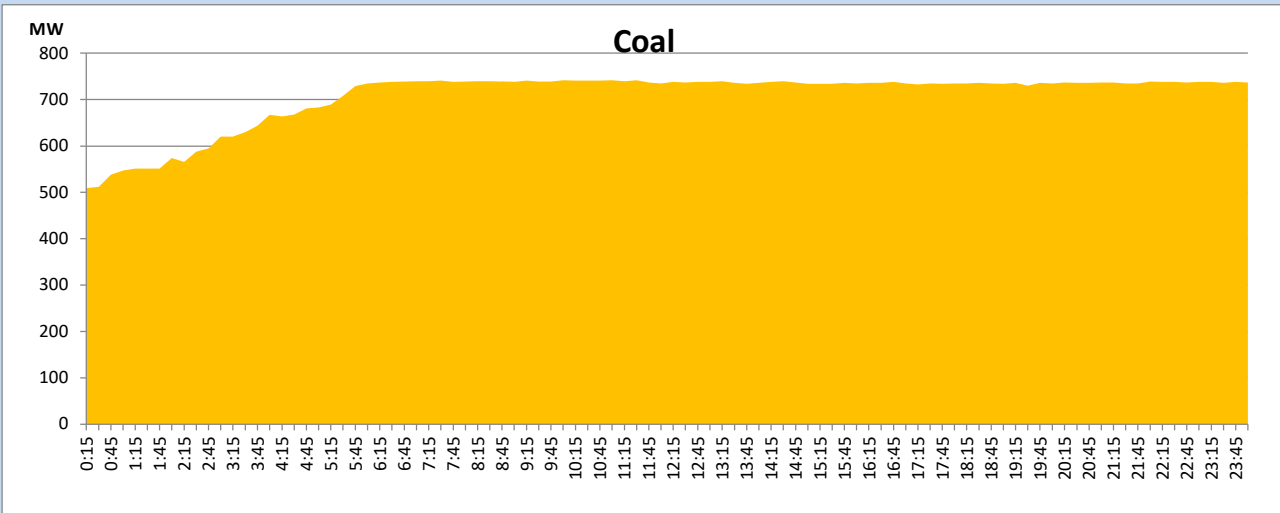
July 27, 2023



Solar and wind data is based on Telemetered Power Stations only

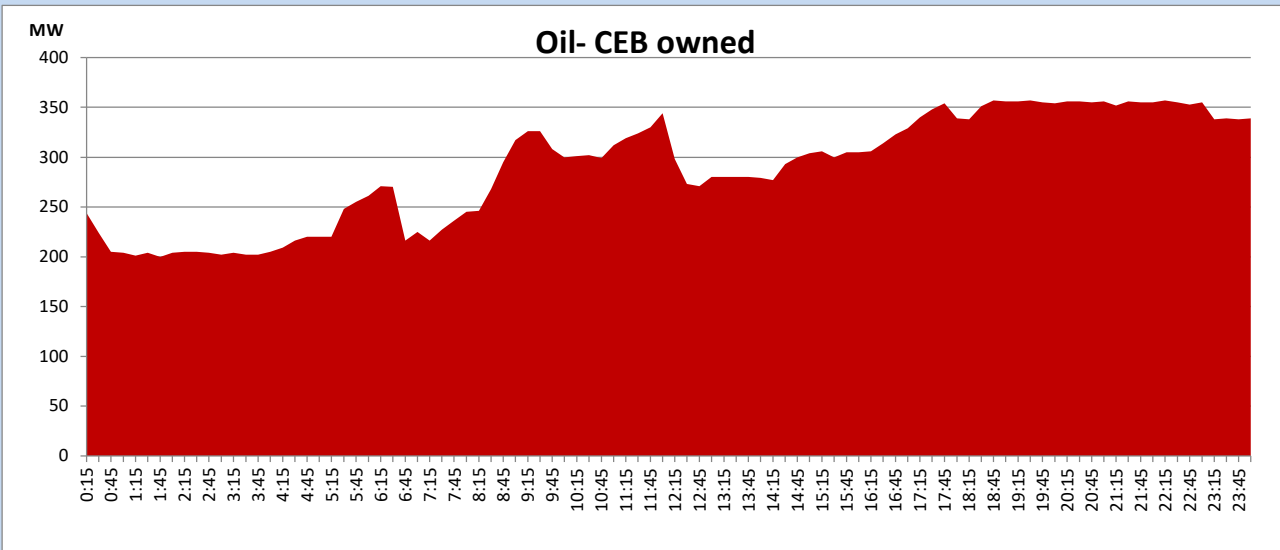
Coal Generation during

July 27, 2023



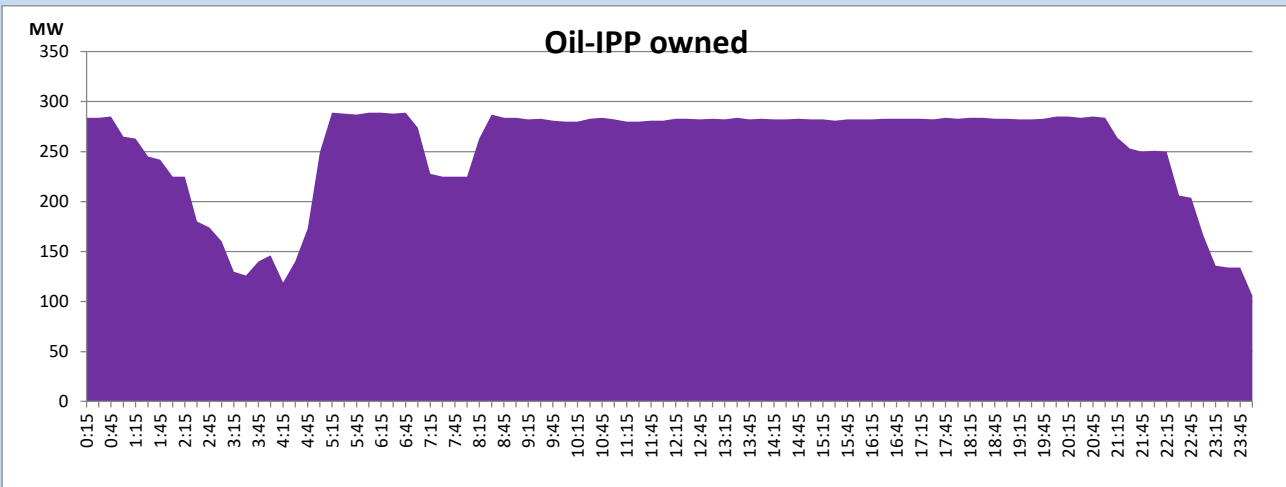
CEB Oil Plant Generation during

July 27, 2023



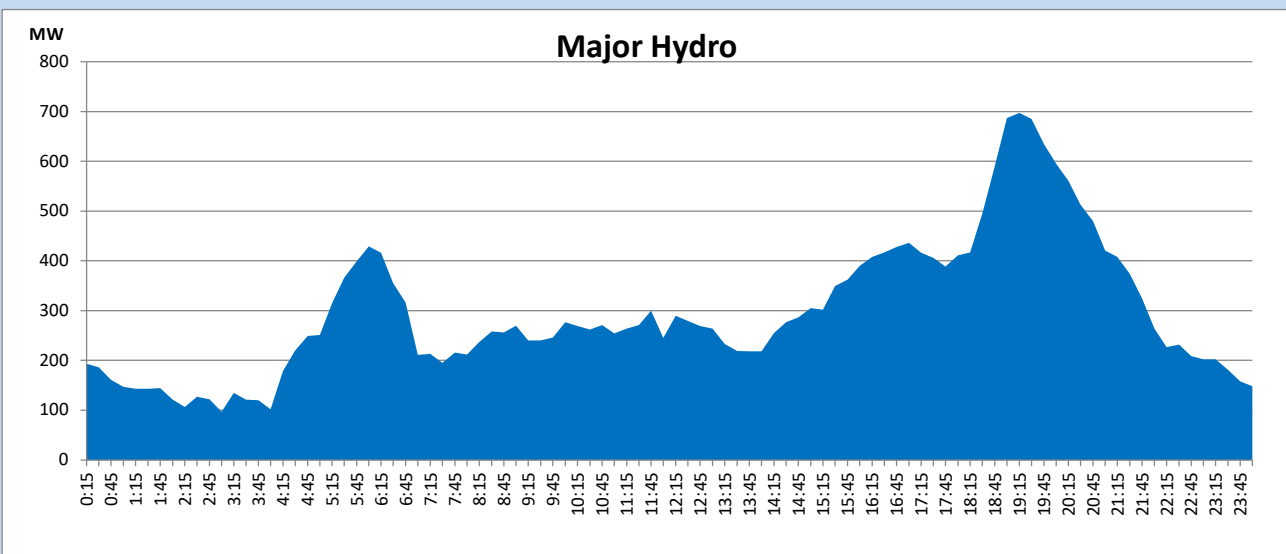
IPP Oil Plant Generation during

July 27, 2023



Major Hydro Generation during

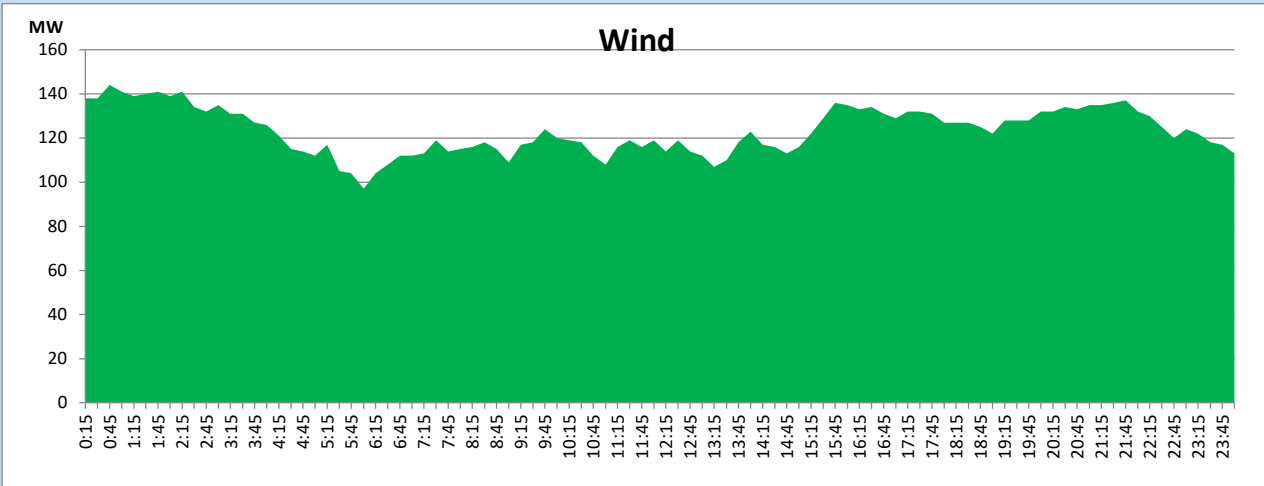
July 27, 2023



Wind Generation during

July 27, 2023

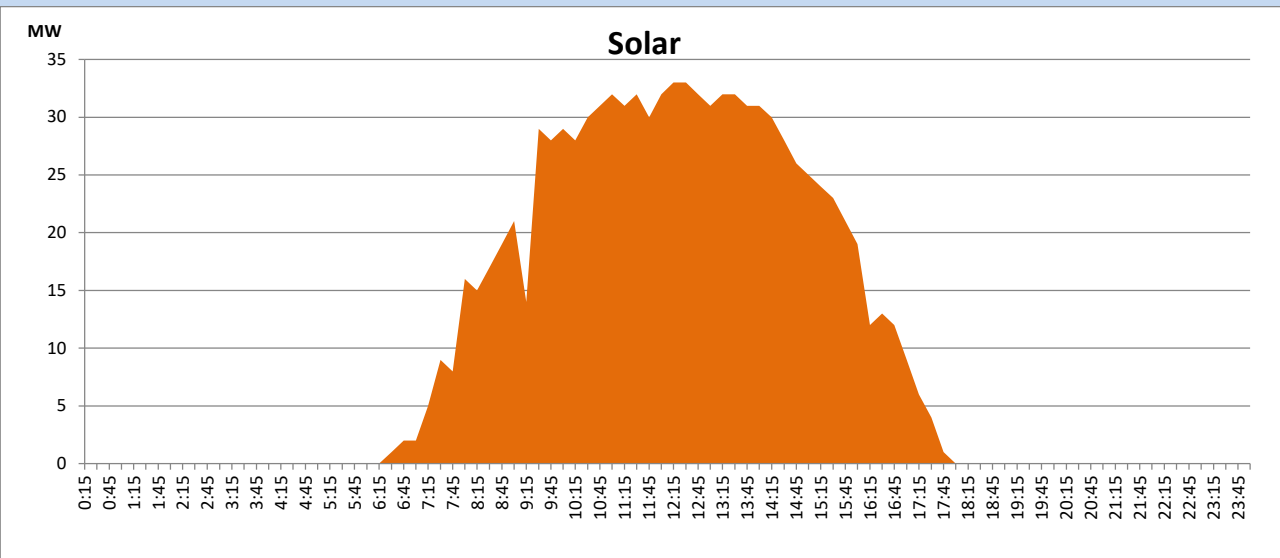
Based on Telemetered Power Stations only



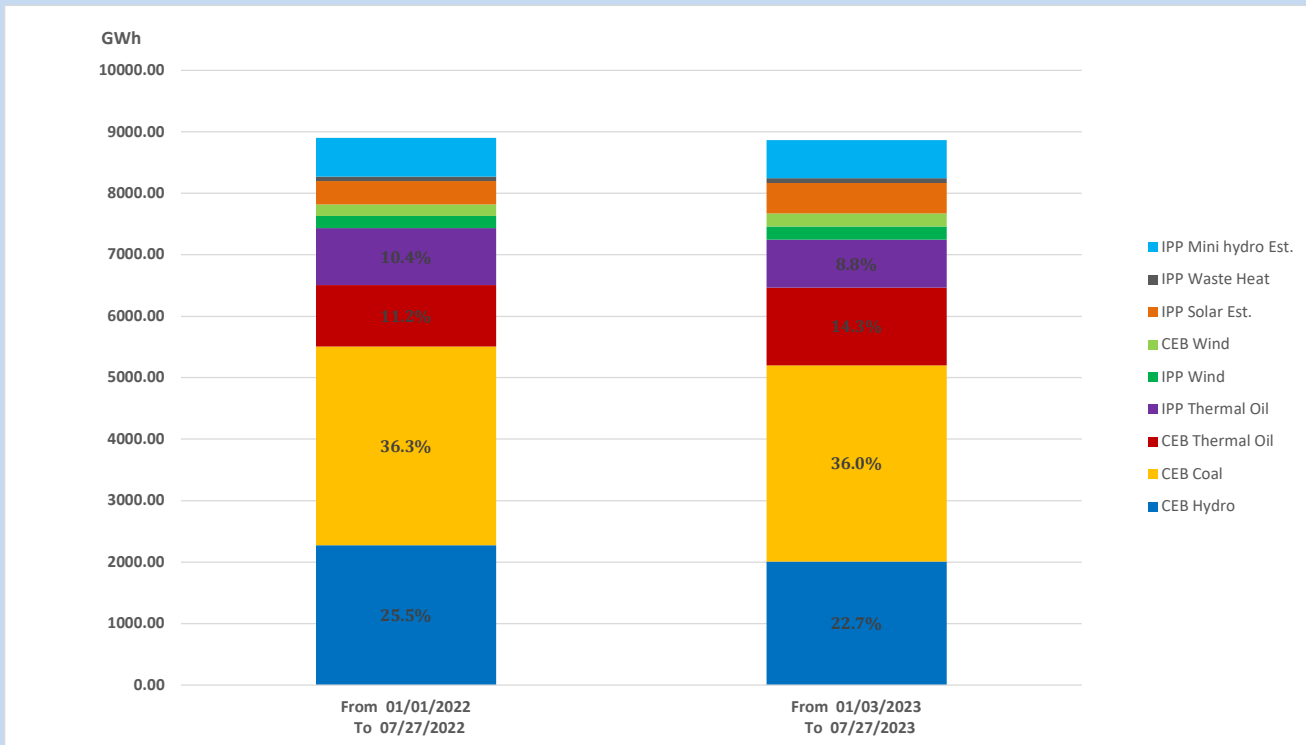
Solar Generation during

July 27, 2023

Based on Telemetered Power Stations only



15. Cumulative Dispatch Comparison with Last Year



Cumulative dispatch

From 01/01/2022 To 07/27/2022

9331 GWh

From 01/01/2023 To 07/27/2023

8804 GWh

The above figures are including contribution from roof top solar, non telemetered solar and mini hydro plants

Thermal Plant Fuel types

Power Station	Primary Fuel
CEB Thermal	
Sapugaskanda 1	Heavy Fuel
Sapugaskanda 2	Heavy Fuel
Kelanitissa Small Gas Turbines	Auto Diesel
GT 7 - Kelanitissa	Auto Diesel
Kelanitissa CCY	Naphtha or Diesel
Lakvijaya 1	Coal
Lakvijaya 2	Coal
Lakvijaya 3	Coal
Uthuru Janani	Heavy Fuel
Barge CEB	Heavy Fuel
KCCPS -2	Auto Diesel

Power Station	Primary Fuel
Private Thermal	
West Coast	Auto Diesel / Heavy Fuel

Major Incidents reported during the day

July 27, 2023

1) WPS unit 01 tripped at 07:29hrs due to low cooling water flow. The unit resumed generation at 07:43hrs.
Rasika Welagedara