

# Generation and Reservoirs Statistics

August 26, 2023



**PUBLIC UTILITIES COMMISSION OF SRI LANKA**

## 1. Daily Generation Mix in MWh

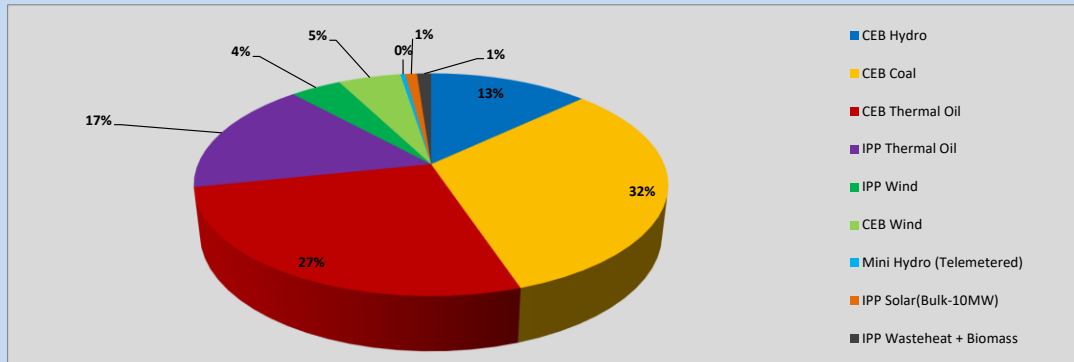


Table 01

	Generation (MWh)
CEB Hydro	5,311
CEB Coal	13,023
CEB Thermal Oil	10,962
IPP Thermal Oil	6,748
IPP Wind	1,701
CEB Wind	2,085
Mini Hydro (Telemetered)	159
IPP Solar (Bulk)	392
IPP Waste heat + Biomass	470
<b>Total Generation (Excluding estimated figures)</b>	<b>40,851</b>
* Estimated unserved energy	0
* Estimated Mini Hydro (Non telemetered)	3611
* Estimated IPP Solar PV (Bulk 1-10MW)	304
* Estimated Solar Roof Top PV	1650
<b>Total Generation (Including estimated figures)</b>	<b>46,416</b>

\* Estimated figures of CEB generation report

Table 02

	Installed Capacity (MW)
CEB Hydro	1409
CEB Coal	810
CEB Thermal Oil	781
IPP Thermal Oil (West Coast, ACE Matara)	294
IPP Wind	148
CEB Wind	100
Mini Hydro	416
IPP Waste heat + Biomass	50
IPP Solar	130
Rooftop Solar* (Ordinary)	267
Rooftop Solar* (LT Bulk)	256
Rooftop Solar* (HT Bulk)	61

Data Source - Monthly Review Report [May-2023]

## 2. Cumulative Dispatch

Following data excludes the contribution from roof top solar, non telemetered solar and mini hydro plants

Table 03 - Current Month

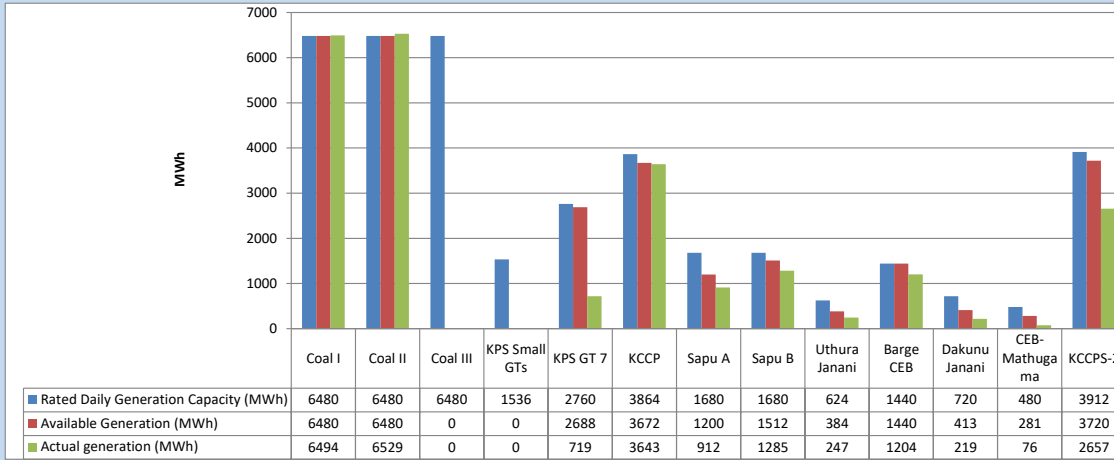
Category	Dispatch (GWh)	
CEB Hydro	223	20.42%
CEB Coal	270	24.74%
CEB Thermal Oil	328	30.00%
IPP Thermal	157	14.32%
SPP Wind	41	3.77%
CEB Wind	44	4.05%
Mini Hydro (Telemetered)	7	0.68%
IPP Solar(Bulk-10MW)	10	0.87%
IPP Waste heat + BMP	13	1.16%
<b>Total</b>	<b>1,093</b>	

Table 04 - Current Year

Category	Dispatch (GWh)	
CEB Hydro	2,270	24.51%
CEB Coal	3,520	38.01%
CEB Thermal Oil	1,632	17.62%
IPP Thermal	960	10.37%
SPP Wind	251	2.71%
CEB Wind	261	2.82%
Mini Hydro (Telemetered)	209	2.25%
IPP Solar(Bulk-10MW)	73	0.79%
IPP Waste heat	86	0.92%
<b>Total</b>	<b>9,261</b>	

### 3. CEB owned Thermal Plant Dispatch

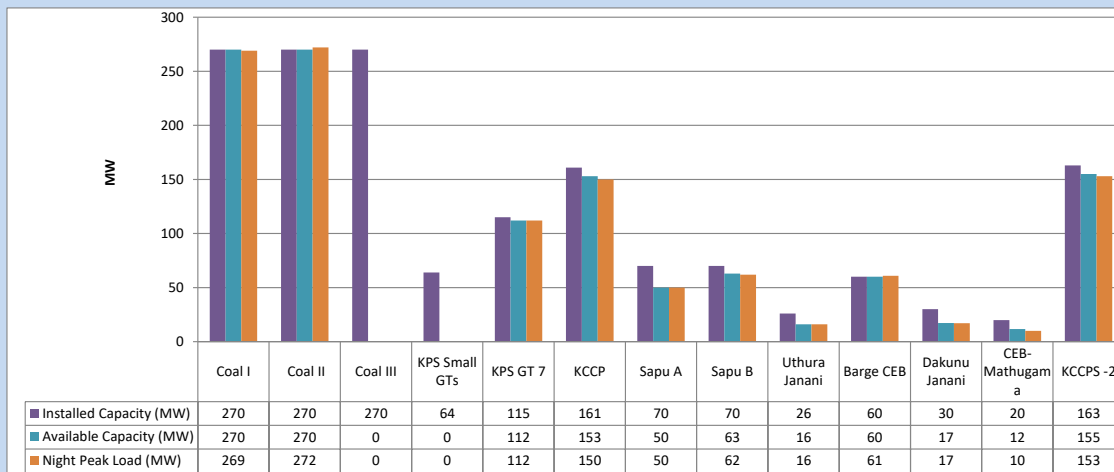
August 26, 2023



Available Generation is estimated based on plant availability at 6.00am on

August 27, 2023

### 4. CEB owned Thermal Plant Loading at the Night Peak

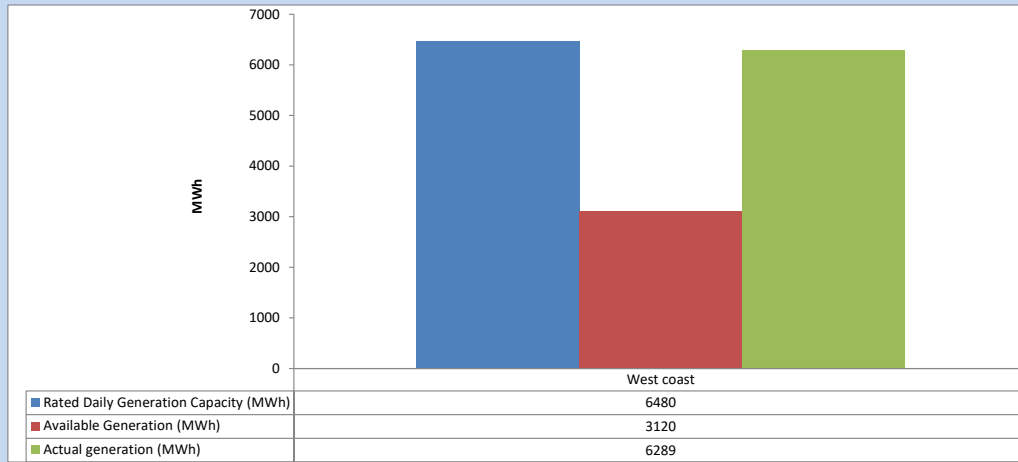


Plant availability is recorded at 6.00 am on

August 27, 2023

### 5. IPP owned Thermal Plant Dispatch

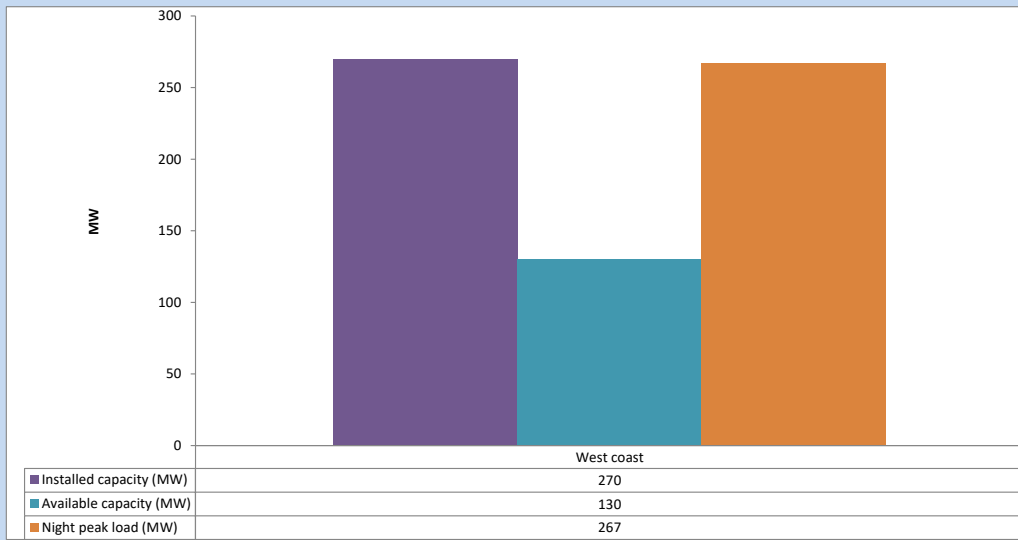
August 26, 2023



Available Generation is estimated based on plant availability at 6.00am on

August 27, 2023

### 6. IPP owned Thermal Plant Loading at the Night Peak

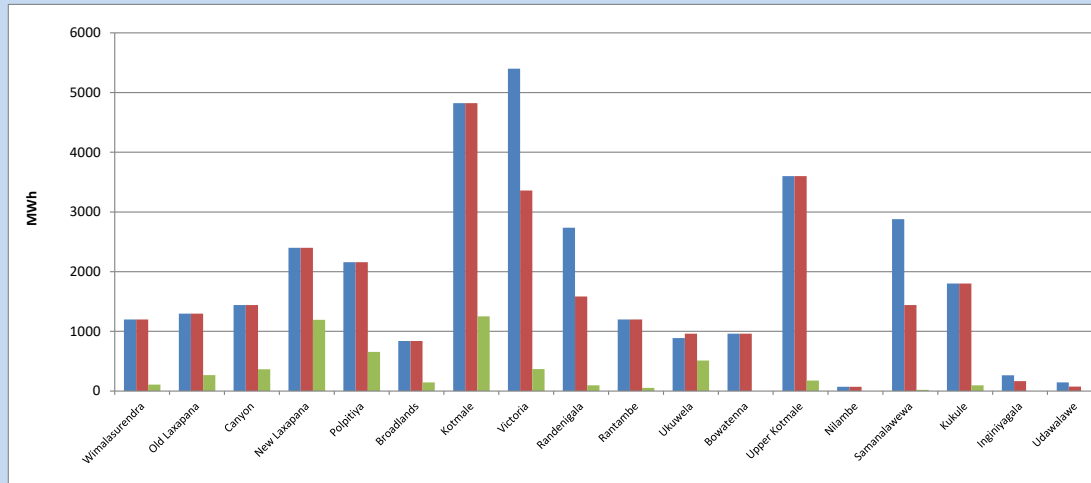


Plant availability is recorded at 6.00 am on

August 27, 2023

### 7. Major Hydro Plant Dispatch

August 26, 2023

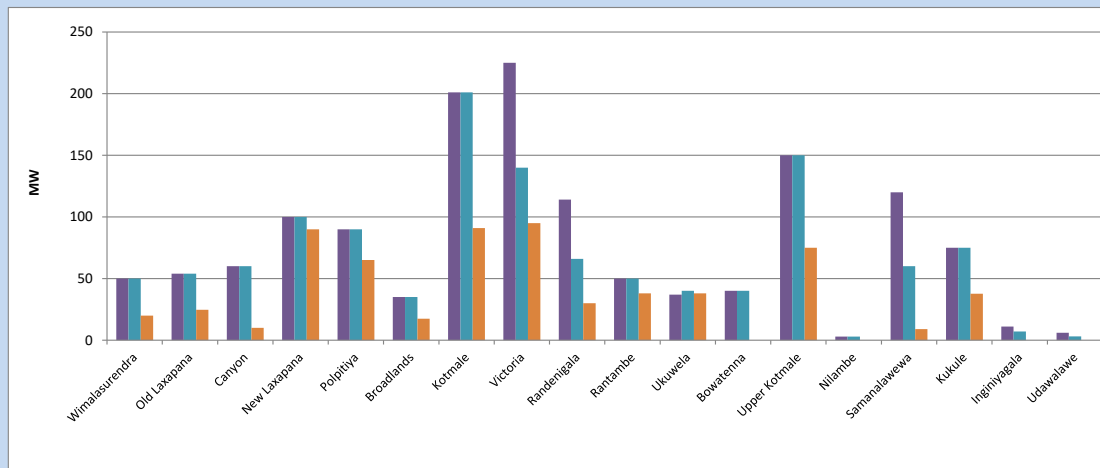


Available Generation is estimated based on plant availability at 6.00am on August 27, 2023  
Broadlands power plant is operating in the Commissioning Stage

August 27, 2023

### 8. Major Hydro Plant Loading at Night Peak

August 26, 2023



Plant availability is recorded at 6.00 am on August 27, 2023  
Broadlands power plant is operating in the Commissioning Stage

August 27, 2023

## 9. Summary of Major Plant performance

Table 05

Plant	Installed Capacity	Plant Availability	Night peak Load	Plant Dispatch
	(MW)	(MW)	(MW)	(MWh)
Wimalasurendra	50	50	20	109
Old Laxapana	54	54	25	268
Canyon	60	60	10	366
New Laxapana	100	100	90	1,193
Polpitiya	90	90	65	655
Broadlands	35	35	18	145
Kotmale	201	201	91	1,250
Victoria	225	140	95	369
Randenigala	114	66	30	96
Rantambe	50	50	38	55
Ukuwela	37	40	38	513
Bowatenna	40	40	0	0
Upper Kotmale	150	150	75	175
Nilambe	3	3	0	0
Samanalawewa	120	60	9	20
Kukule	75	75	38	97
Inginiyagala	11	7	0	0
Udawalawe	6	3	0	0
Puttalam Coal I	270	270	269	6,494
Puttalam Coal II	270	270	272	6,529
Puttalam Coal III	270	0	0	0
KPS Small GTs	64	0	0	0
KPS GT 7	115	112	112	719
KCCP	161	153	150	3,643
Sapugaskanda A	70	50	50	912
Sapugaskanda B	70	63	62	1,285
Uthura Janani	26	16	16	247
Barge CEB	60	60	61	1,204
CEB-Hambantota	30	17	17	219
CEB-Mathugama	20	12	10	76
ACE Matara	24	0	0	0
Asia Power	50	0	0	0
KCCPS -2	163	155	153	2,657
West Coast	270	130	267	6,289
Nothern Power	36	0	0	0
ACE Embilipitiya	93	0	0	0
<b>Total</b>	<b>3,483</b>	<b>2,532</b>	<b>2,217</b>	<b>40,392</b>

Plant availability is the availability recorded at 6 am on

August 27, 2023

### 10. Contribution to the Night Peak in MW

August 26, 2023

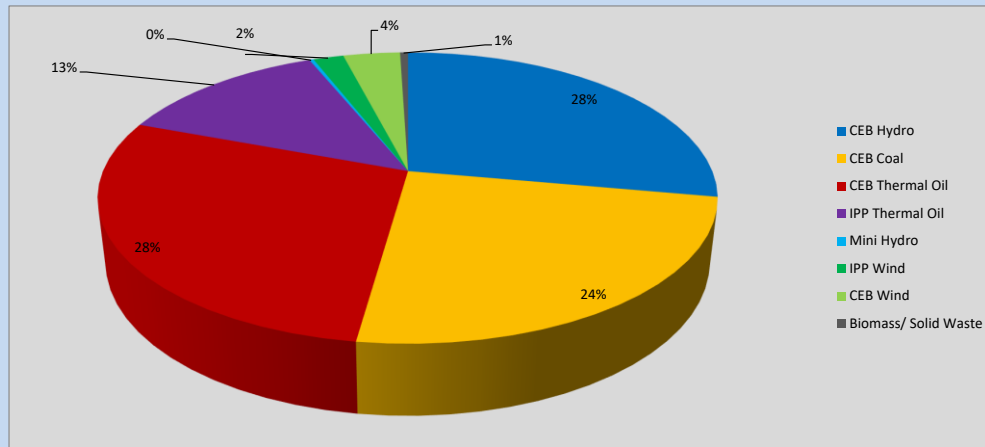


Table 06

CEB Hydro	617	MW
CEB Coal	541	MW
CEB Thermal Oil	631	MW
IPP Thermal Oil	291	MW
Mini Hydro (Telemetered)	6	MW
IPP Wind	42	MW
CEB Wind	78.5	MW
Biomass/ Solid Waste	11	MW

#### Recorded Peak Demand Data

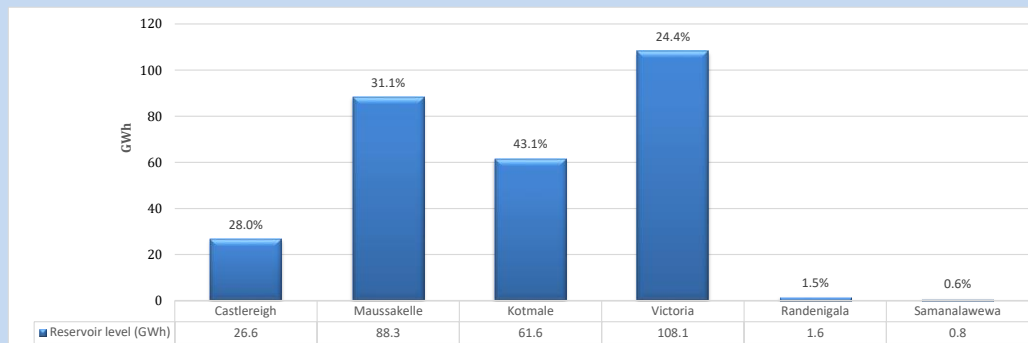
Table 07

Night Peak*	2,217	MW
Day Peak Maximum Demand	1,710	MW
Day Peak Minimum Demand	1,485	MW
Off Peak Minimum Demand	1,404	MW

Above figures are excluding contribution from roof top solar, non telemetered solar and mini hydro plants

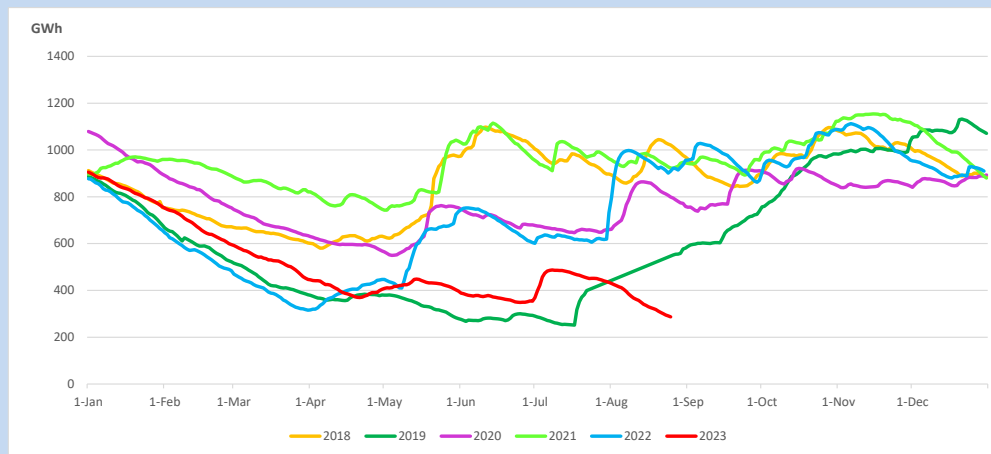
#### Reservoir Levels -

as at 06.00 Hr on August 27, 2023

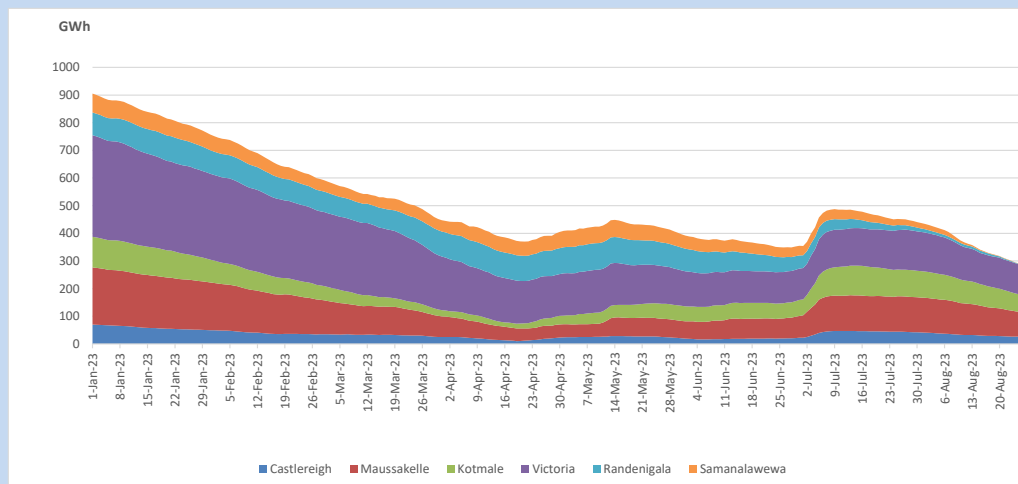


Total Reservoir Level 287 GWh  
% of Total capacity 23.8%

### 11. Comparison of Total Reservoir Storage Levels with Past Years

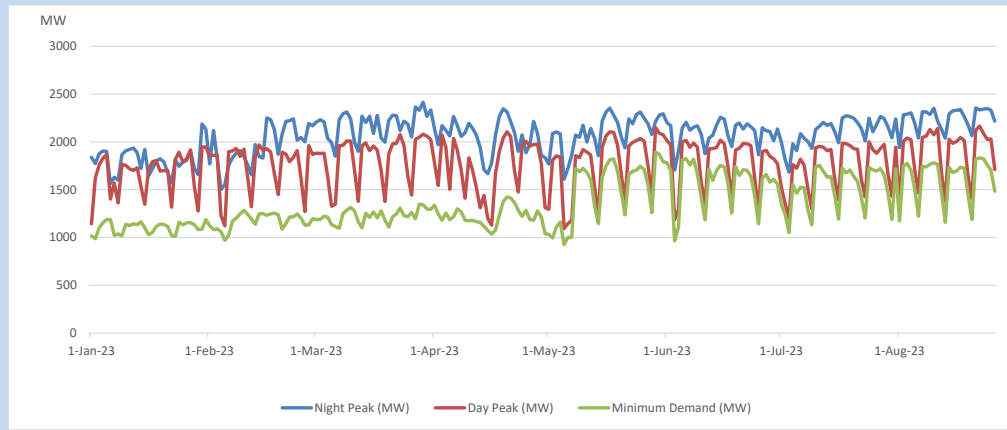


### 12. Variation of Major Hydro Reservoir Levels in the current year (GWh)





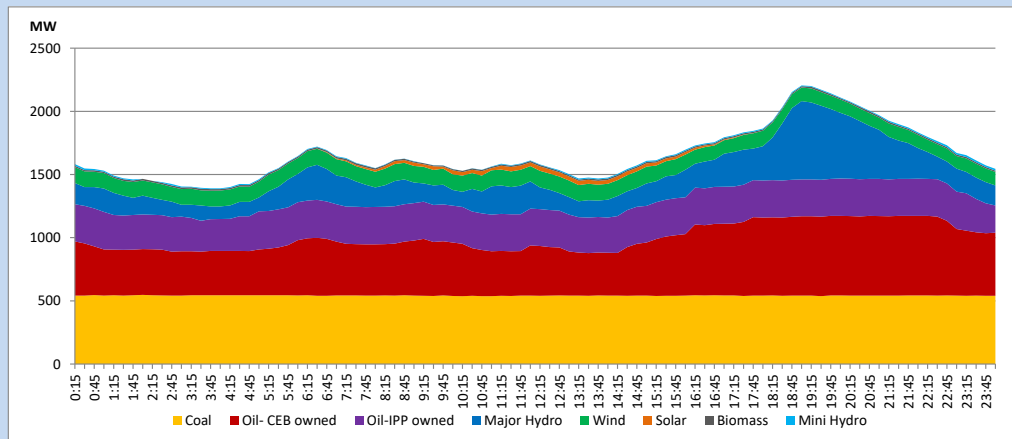
### 13. Variation of Demand during the current year



The above figures are excluding contribution from roof top solar, non telemetered solar and mini hydro plants

### 14. Daily Load Curve

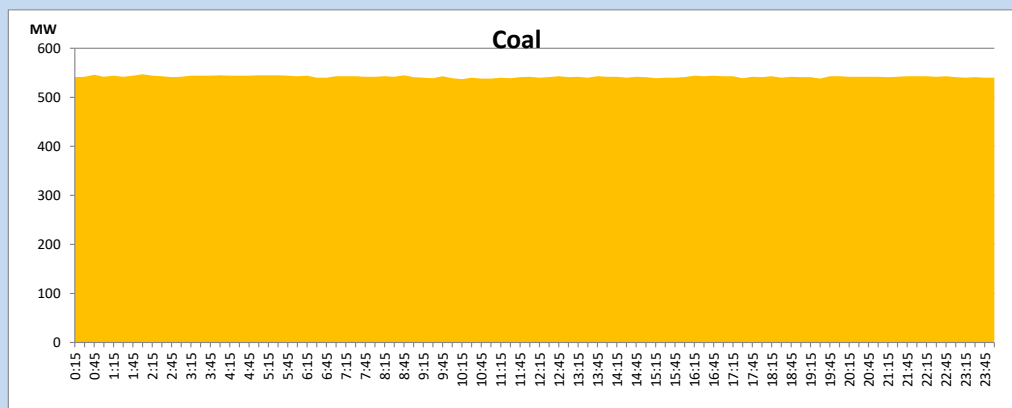
August 26, 2023



Solar and wind data is based on Telemetered Power Stations only

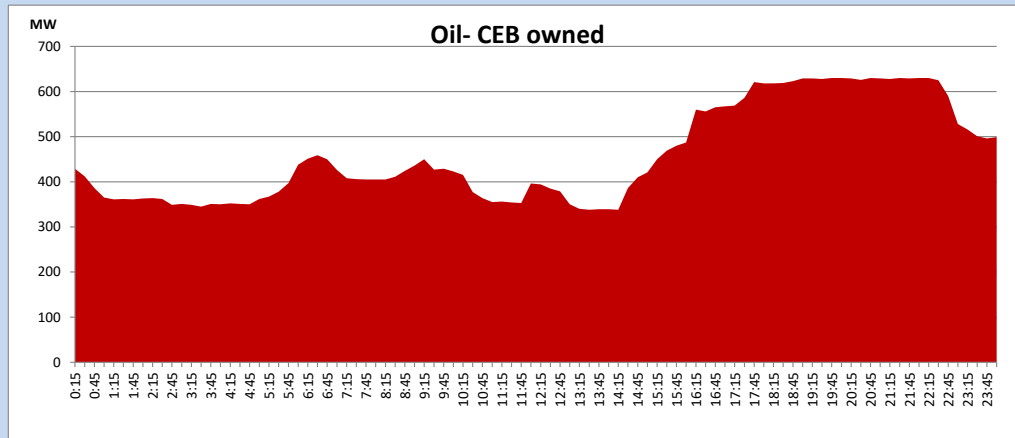
### Coal Generation during

August 26, 2023



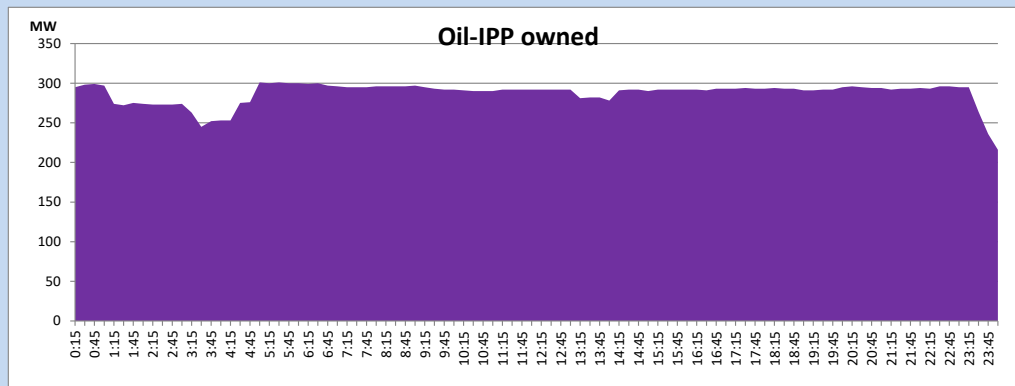
CEB Oil Plant Generation during

August 26, 2023



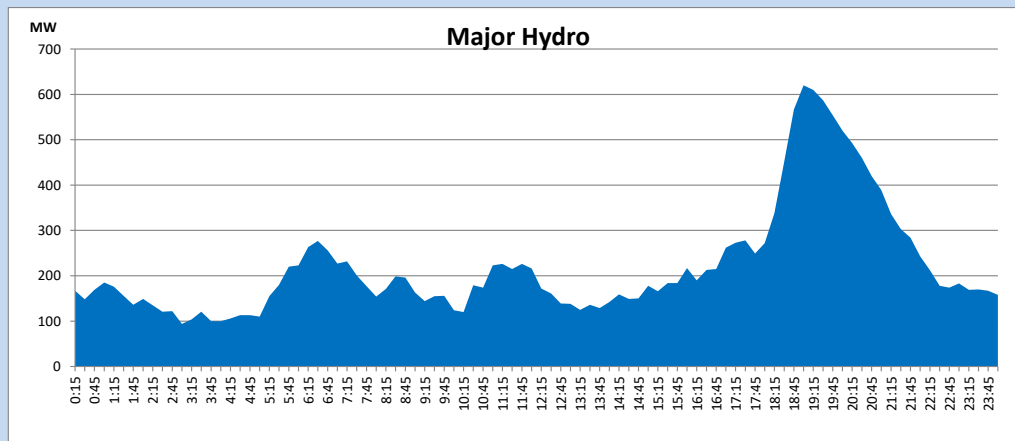
IPP Oil Plant Generation during

August 26, 2023



Major Hydro Generation during

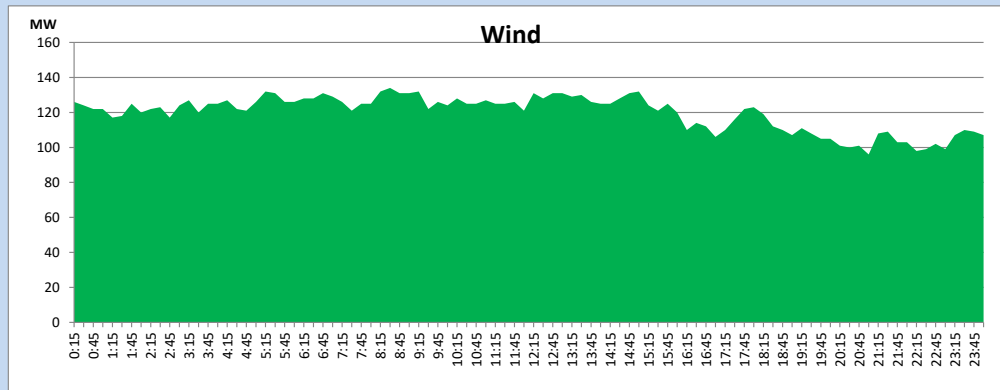
August 26, 2023



## Wind Generation during

August 26, 2023

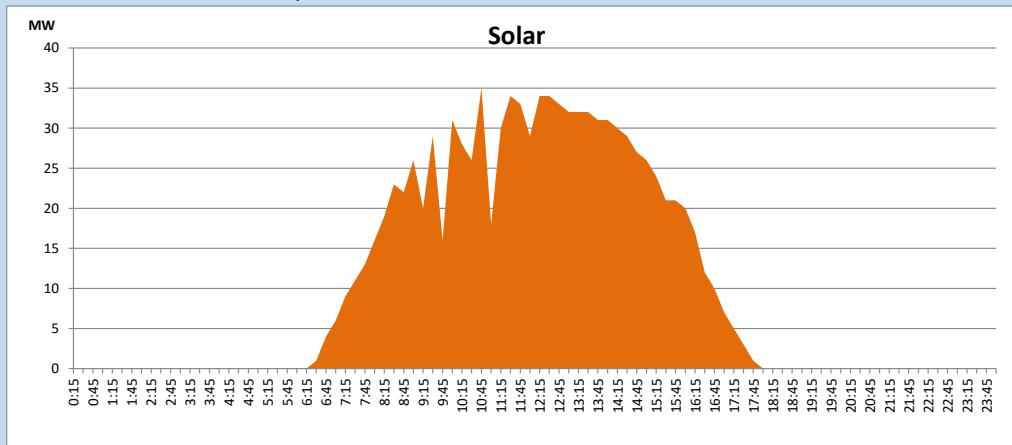
Based on Telemetered Power Stations only



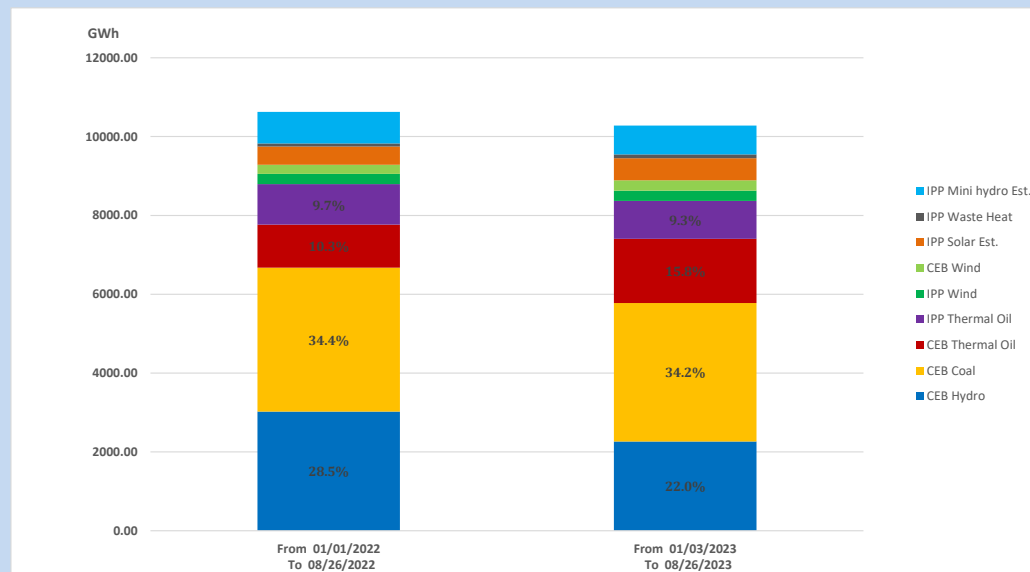
## Solar Generation during

August 26, 2023

Based on Telemetered Power Stations only



## 15. Cumulative Dispatch Comparison with Last Year



**Cumulative dispatch**  
 From 01/01/2022 To 08/26/2022  
 From 01/01/2023 To 08/26/2023

**10626 GWh**  
**10278 GWh**

The above figures are including contribution from roof top solar, non telemetered solar and mini hydro plants (figures have been adjusted based on the data from the CEB monthly review reports.)

Thermal Plant Fuel types

Table 08

Power Station	Primary Fuel
CEB Thermal	
Sapugaskanda 1	Heavy Fuel
Sapugaskanda 2	Heavy Fuel
Kelanitissa Small Gas Turbines	Auto Diesel
GT 7 - Kelanitissa	Auto Diesel
Kelanitissa CCY	Naphtha or Diesel
Lakvijaya 1	Coal
Lakvijaya 2	Coal
Lakvijaya 3	Coal
Uthuru Janani	Heavy Fuel
Barge CEB	Heavy Fuel
KCCPS -2	Auto Diesel

Power Station	Primary Fuel
Private Thermal	
West Coast	Auto Diesel / Heavy Fuel
ACE Matara	Heavy Fuel

Major Incidents reported during the day

August 26, 2023

- 1) Samanalawewa full load generation restricted, in order to comply with the operation constraints initiated by propagation of air bubbles at reservoir intake, which would further course for the possible formation of vortex at the same place, due to the severe depletion of Samanalawewa reservoir storage.
- 2) N'Anuradhapura - Vavniya cct 01 tripped at 13:47hrs due to operation of Distance Protection. N' Anuradhapura - Vavniya cct 01 restored at 15:45hrs.