

# Generation and Reservoirs Statistics

August 25, 2023



**PUBLIC UTILITIES COMMISSION OF SRI LANKA**

## 1. Daily Generation Mix in MWh

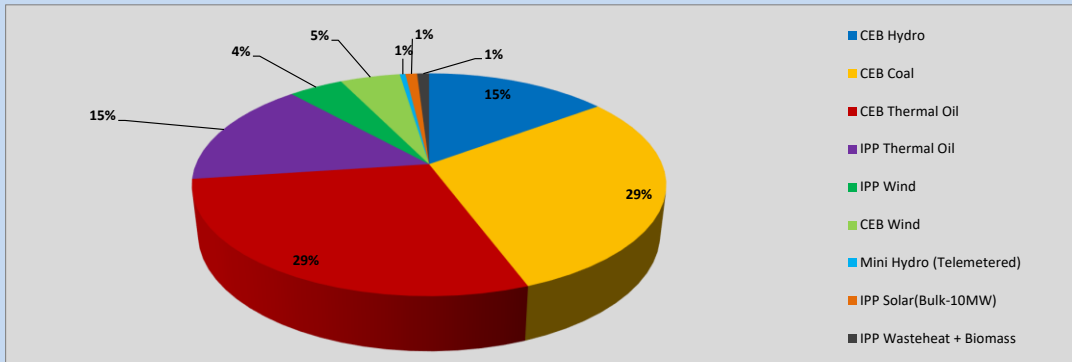


Table 01

	Generation (MWh)
CEB Hydro	6,559
CEB Coal	13,007
CEB Thermal Oil	12,617
IPP Thermal Oil	6,803
IPP Wind	1,964
CEB Wind	2,160
Mini Hydro (Telemetered)	201
IPP Solar (Bulk)	421
IPP Waste heat + Biomass	432
<b>Total Generation (Excluding estimated figures)</b>	<b>44,164</b>
* Estimated unserved energy	0
* Estimated Mini Hydro (Non telemetered)	3569
* Estimated IPP Solar PV (Bulk 1-10MW)	304
* Estimated Solar Roof Top PV	1650
<b>Total Generation (Including estimated figures)</b>	<b>49,687</b>

\* Estimated figures of CEB generation report

Table 02

	Installed Capacity (MW)
CEB Hydro	1409
CEB Coal	810
CEB Thermal Oil	781
IPP Thermal Oil (West Coast, ACE Matara)	294
IPP Wind	148
CEB Wind	100
Mini Hydro	416
IPP Waste heat + Biomass	50
IPP Solar	130
Rooftop Solar* (Ordinary)	267
Rooftop Solar* (LT Bulk)	256
Rooftop Solar* (HT Bulk)	61

Data Source - Monthly Review Report [May-2023]

## 2. Cumulative Dispatch

Following data excludes the contribution from roof top solar, non telemetered solar and mini hydro plants

Table 03 - Current Month

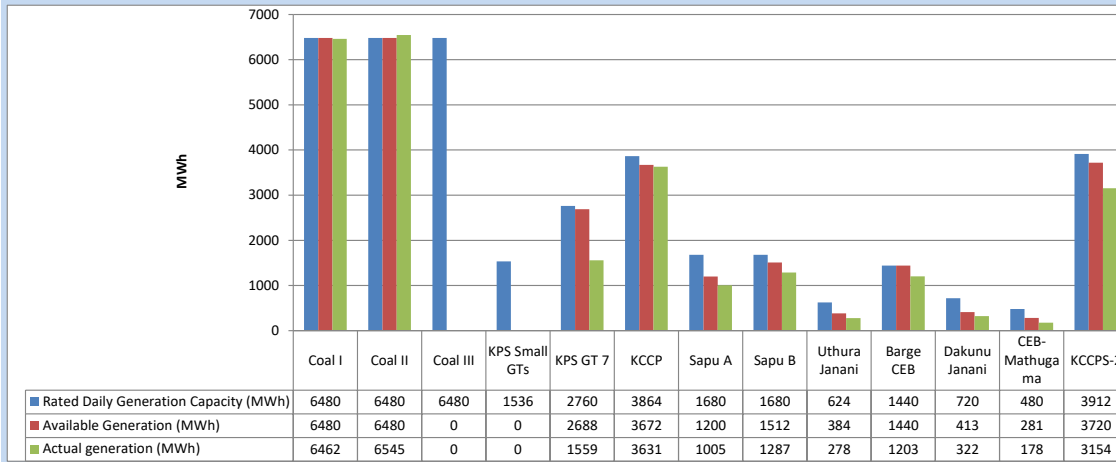
Category	Dispatch (GWh)	
CEB Hydro	218	20.71%
CEB Coal	257	24.46%
CEB Thermal Oil	317	30.12%
IPP Thermal	150	14.23%
SPP Wind	39	3.75%
CEB Wind	42	4.01%
Mini Hydro (Telemetered)	7	0.69%
IPP Solar(Bulk-10MW)	9	0.87%
IPP Waste heat + BMP	12	1.16%
<b>Total</b>	<b>1,052</b>	

Table 04 - Current Year

Category	Dispatch (GWh)	
CEB Hydro	2,265	24.56%
CEB Coal	3,507	38.04%
CEB Thermal Oil	1,621	17.58%
IPP Thermal	953	10.34%
SPP Wind	250	2.71%
CEB Wind	259	2.80%
Mini Hydro (Telemetered)	208	2.26%
IPP Solar(Bulk-10MW)	72	0.78%
IPP Waste heat	85	0.92%
<b>Total</b>	<b>9,220</b>	

### 3. CEB owned Thermal Plant Dispatch

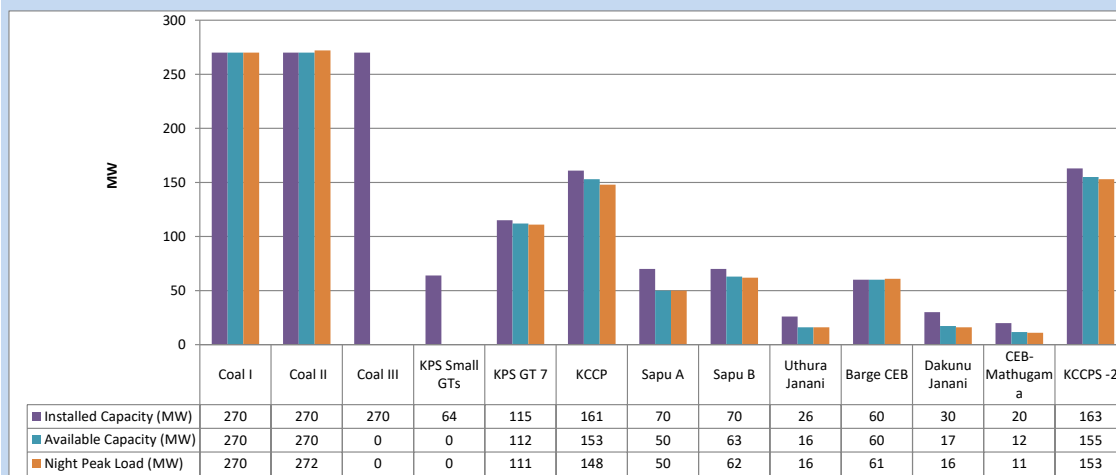
August 25, 2023



Available Generation is estimated based on plant availability at 6.00am on

August 26, 2023

### 4. CEB owned Thermal Plant Loading at the Night Peak

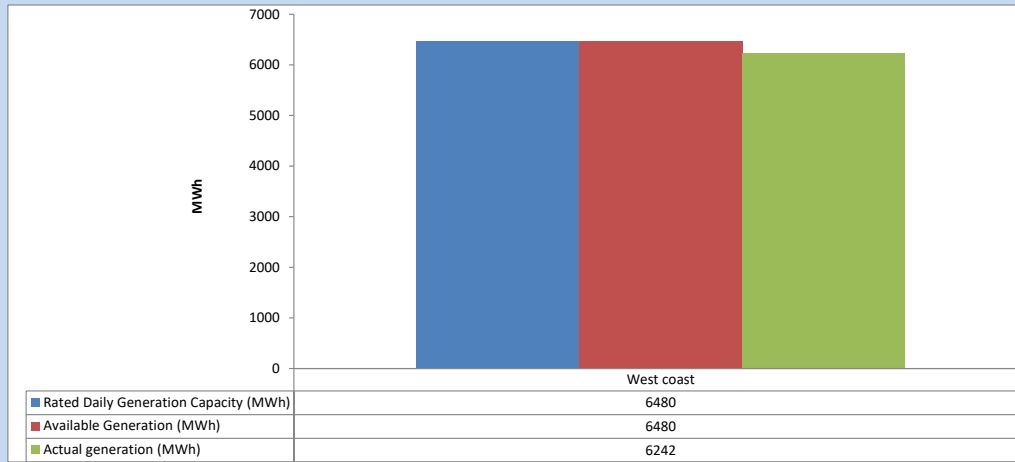


Plant availability is recorded at 6.00 am on

August 26, 2023

### 5. IPP owned Thermal Plant Dispatch

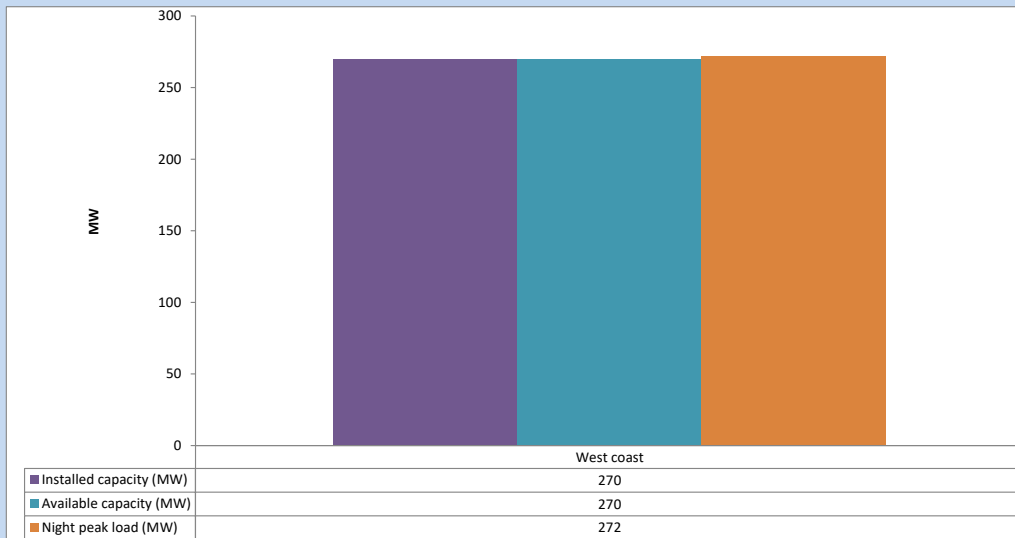
August 25, 2023



Available Generation is estimated based on plant availability at 6.00am on

August 26, 2023

### 6. IPP owned Thermal Plant Loading at the Night Peak

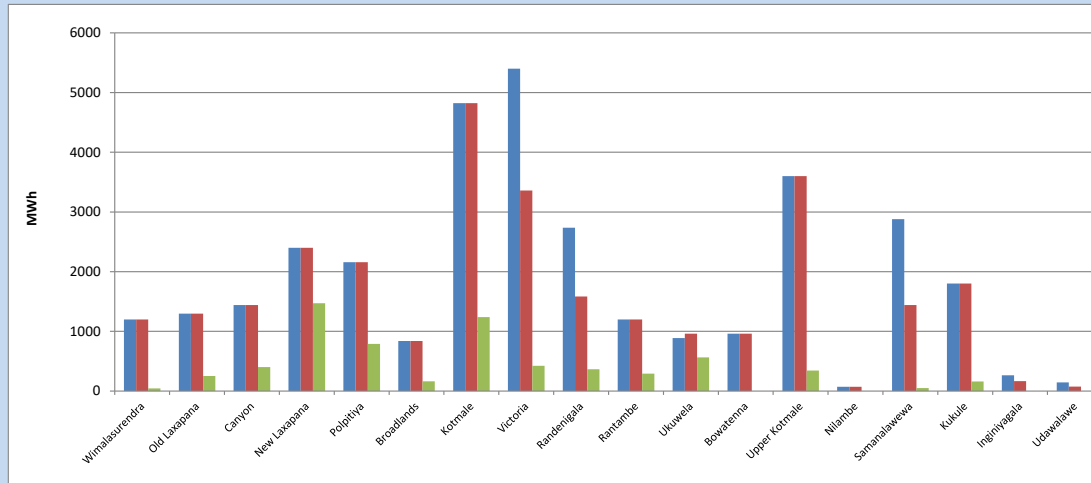


Plant availability is recorded at 6.00 am on

August 26, 2023

### 7. Major Hydro Plant Dispatch

August 25, 2023

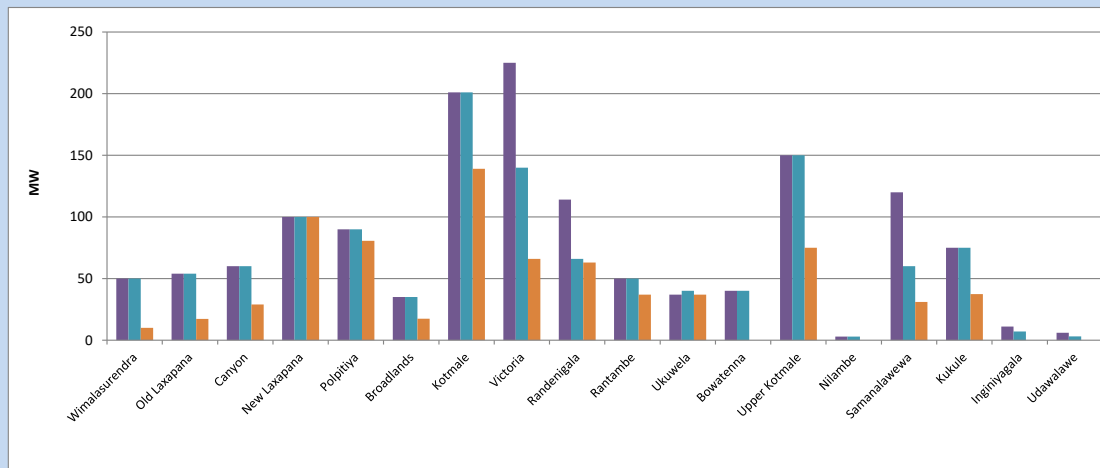


Available Generation is estimated based on plant availability at 6.00am on August 26, 2023  
 Broadlands power plant is operating in the Commissioning Stage

August 26, 2023

### 8. Major Hydro Plant Loading at Night Peak

August 25, 2023



Plant availability is recorded at 6.00 am on August 26, 2023  
 Broadlands power plant is operating in the Commissioning Stage

August 26, 2023

## 9. Summary of Major Plant performance

Table 05

Plant	Installed Capacity (MW)	Plant Availability (MW)	Night peak Load (MW)	Plant Dispatch (MWh)
Wimalasurendra	50	50	10	44
Old Laxapana	54	54	17	251
Canyon	60	60	29	402
New Laxapana	100	100	100	1,470
Polpitiya	90	90	81	791
Broadlands	35	35	17	165
Kotmale	201	201	139	1,240
Victoria	225	140	66	423
Randenigala	114	66	63	366
Rantambe	50	50	37	291
Ukuwela	37	40	37	564
Bowatenna	40	40	0	0
Upper Kotmale	150	150	75	344
Nilambe	3	3	0	0
Samanalawewa	120	60	31	49
Kukule	75	75	37	159
Inginiyagala	11	7	0	0
Udawalawe	6	3	0	0
Puttalam Coal I	270	270	270	6,462
Puttalam Coal II	270	270	272	6,545
Puttalam Coal III	270	0	0	0
KPS Small GTs	64	0	0	0
KPS GT 7	115	112	111	1,559
KCCP	161	153	148	3,631
Sapugaskanda A	70	50	50	1,005
Sapugaskanda B	70	63	62	1,287
Uthura Janani	26	16	16	278
Barge CEB	60	60	61	1,203
CEB-Hambantota	30	17	16	322
CEB-Mathugama	20	12	11	178
ACE Matara	24	0	0	0
Asia Power	50	0	0	0
KCCPS -2	163	155	153	3,154
West Coast	270	270	272	6,242
Nothern Power	36	0	0	0
ACE Embilipitiya	93	0	0	0
<b>Total</b>	<b>3,483</b>	<b>2,672</b>	<b>2,331</b>	<b>43,603</b>

Plant availability is the availability recorded at 6 am on

August 26, 2023

### 10. Contribution to the Night Peak in MW

August 25, 2023

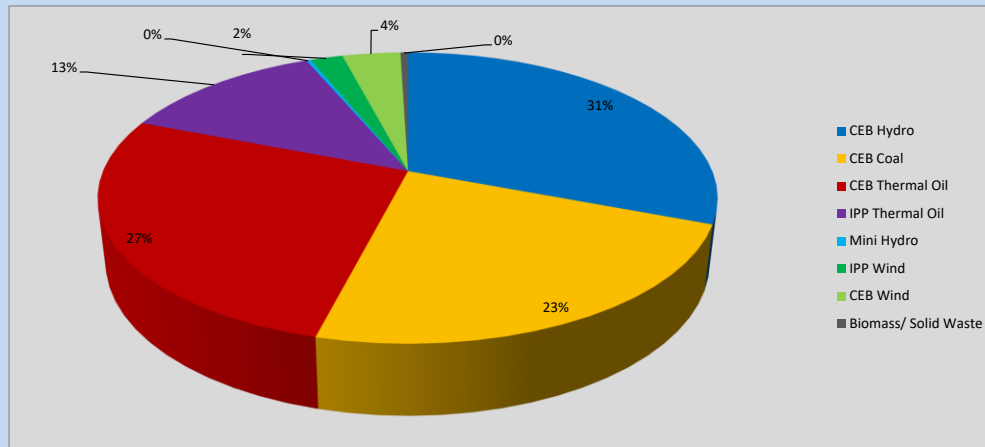


Table 06

CEB Hydro	718	MW
CEB Coal	542	MW
CEB Thermal Oil	628	MW
IPP Thermal Oil	296	MW
Mini Hydro (Telemetered)	6	MW
IPP Wind	47.2	MW
CEB Wind	84.5	MW
Biomass/ Solid Waste	11	MW

#### Recorded Peak Demand Data

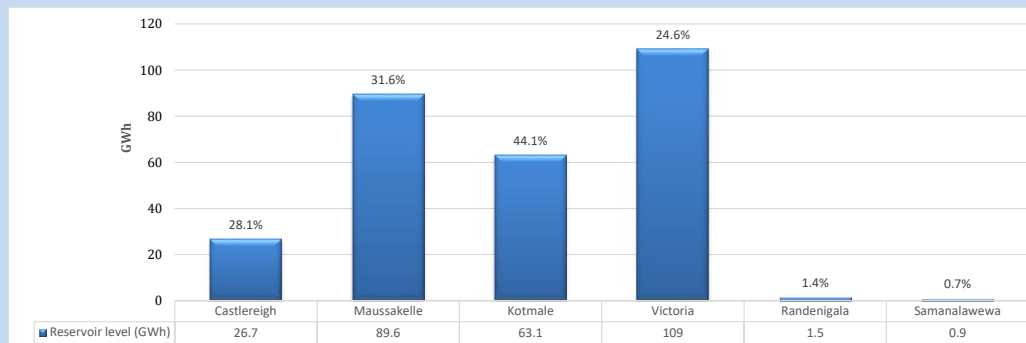
Table 07

Night Peak*	2,333	MW
Day Peak Maximum Demand	2,031	MW
Day Peak Minimum Demand	1,705	MW
Off Peak Minimum Demand	1,400	MW

Above figures are excluding contribution from roof top solar, non telemetered solar and mini hydro plants

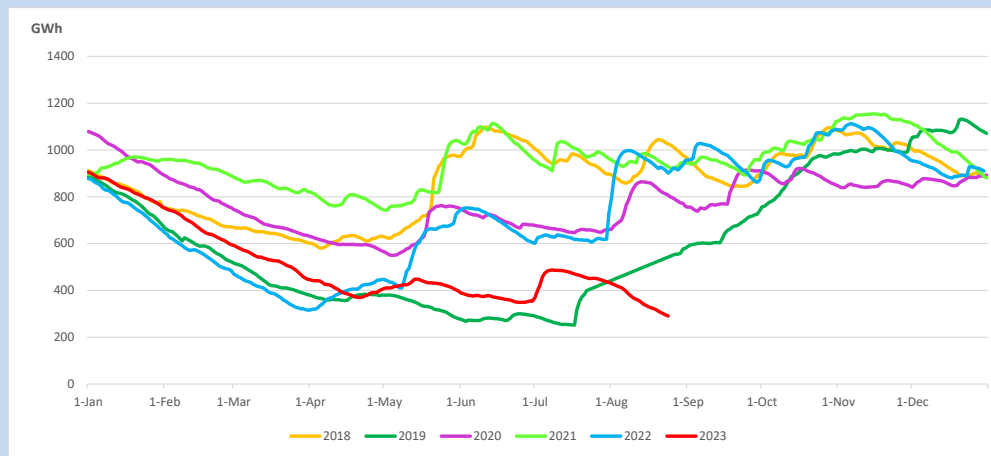
#### Reservoir Levels -

as at 06.00 Hr on August 26, 2023

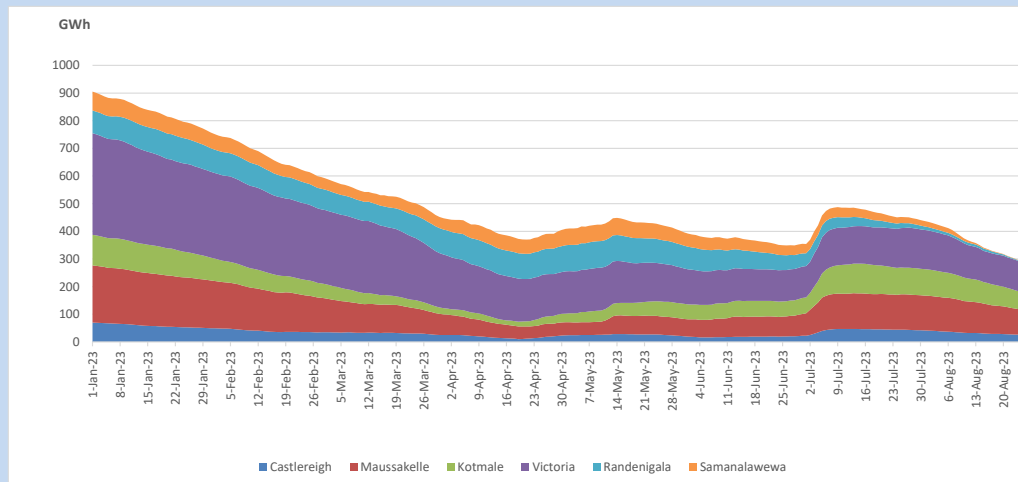


Total Reservoir Level 290.8 GWh  
 % of Total capacity 24.2%

### 11. Comparison of Total Reservoir Storage Levels with Past Years

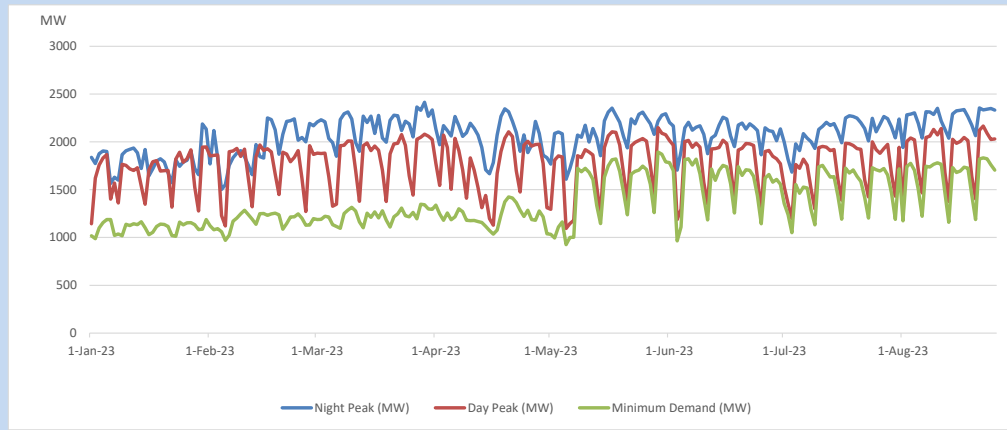


### 12. Variation of Major Hydro Reservoir Levels in the current year (GWh)





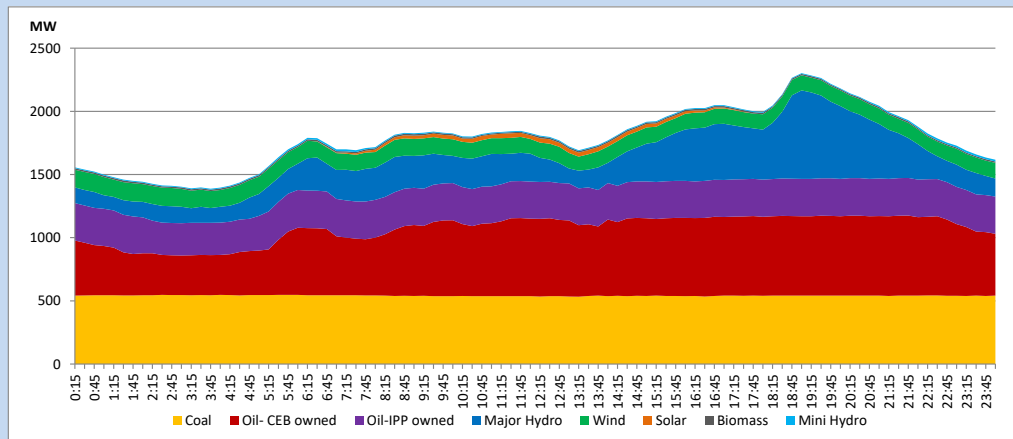
### 13. Variation of Demand during the current year



The above figures are excluding contribution from roof top solar, non telemetered solar and mini hydro plants

### 14. Daily Load Curve

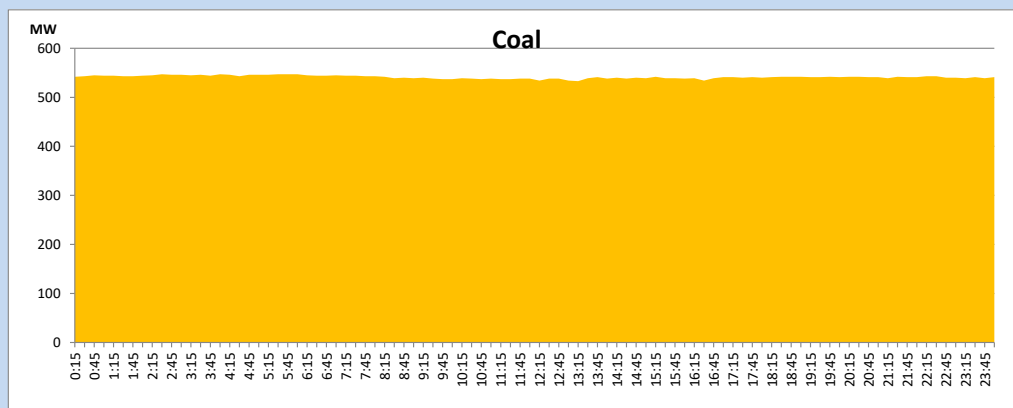
August 25, 2023



Solar and wind data is based on Telemetered Power Stations only

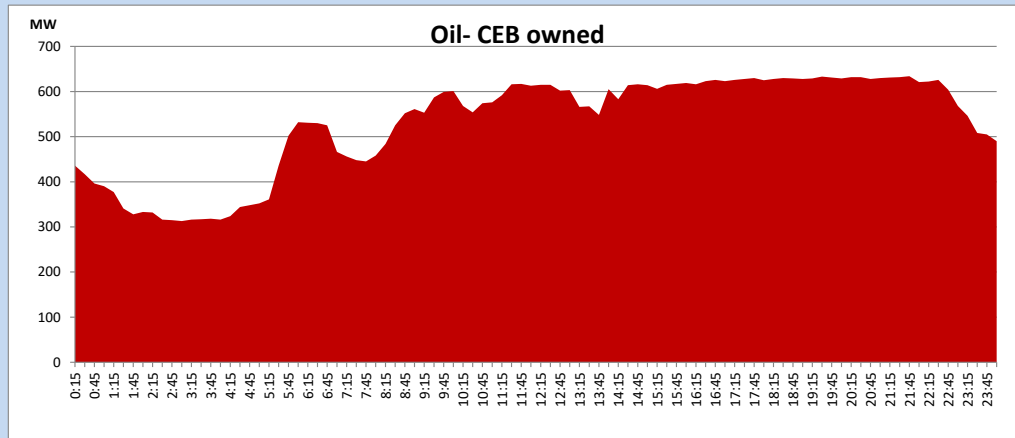
### Coal Generation during

August 25, 2023



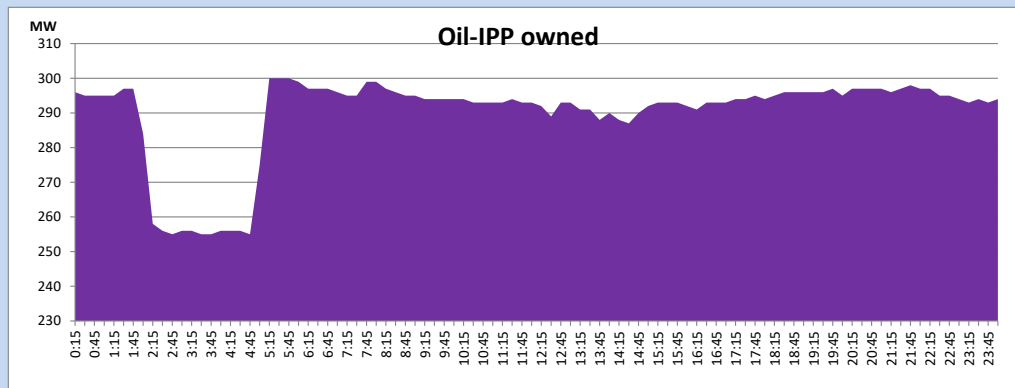
CEB Oil Plant Generation during

August 25, 2023



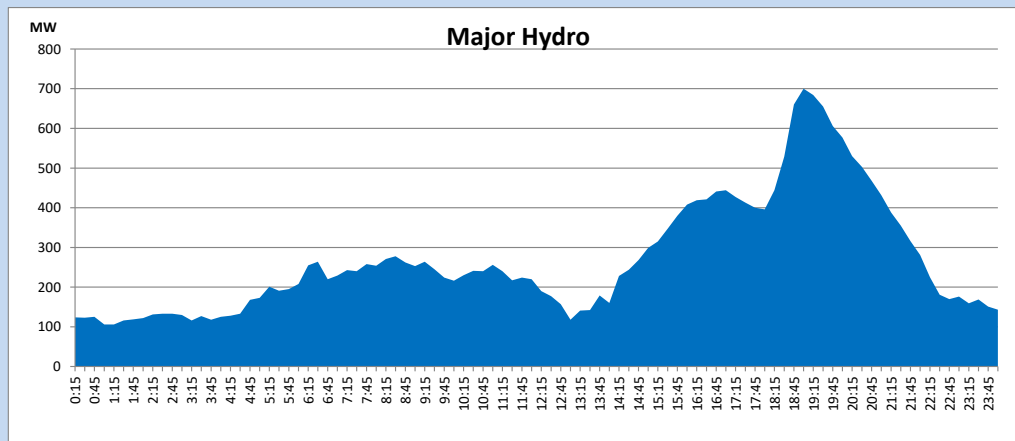
IPP Oil Plant Generation during

August 25, 2023



Major Hydro Generation during

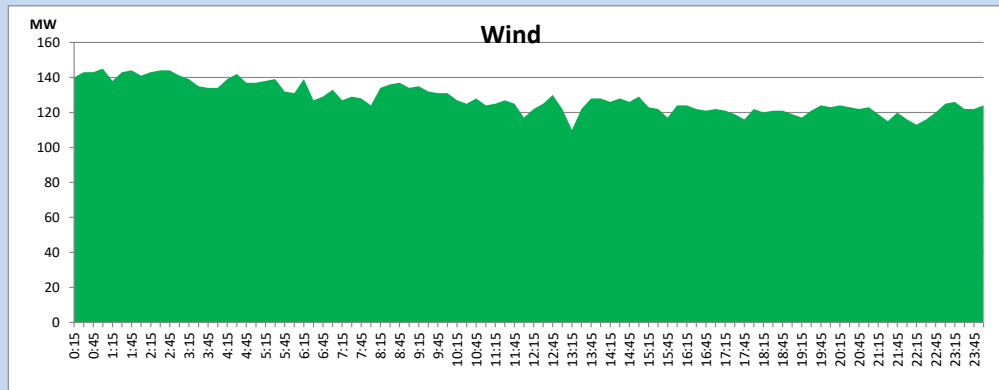
August 25, 2023



## Wind Generation during

August 25, 2023

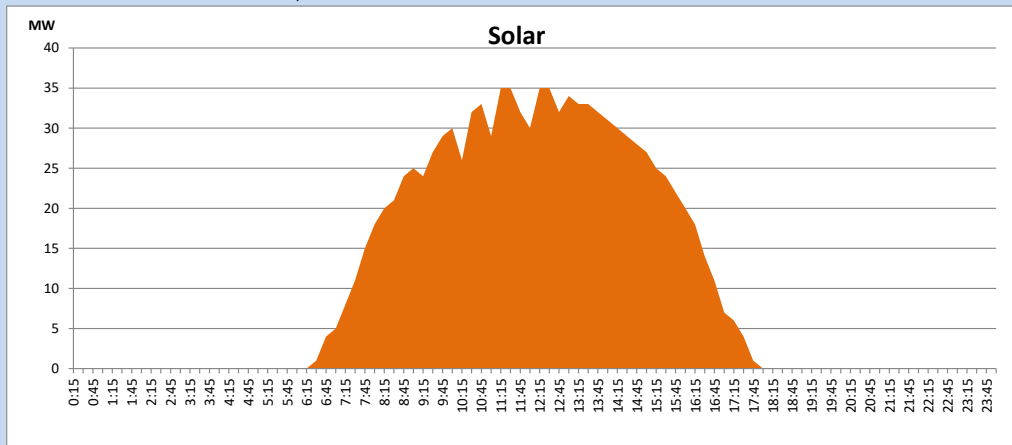
Based on Telemetered Power Stations only



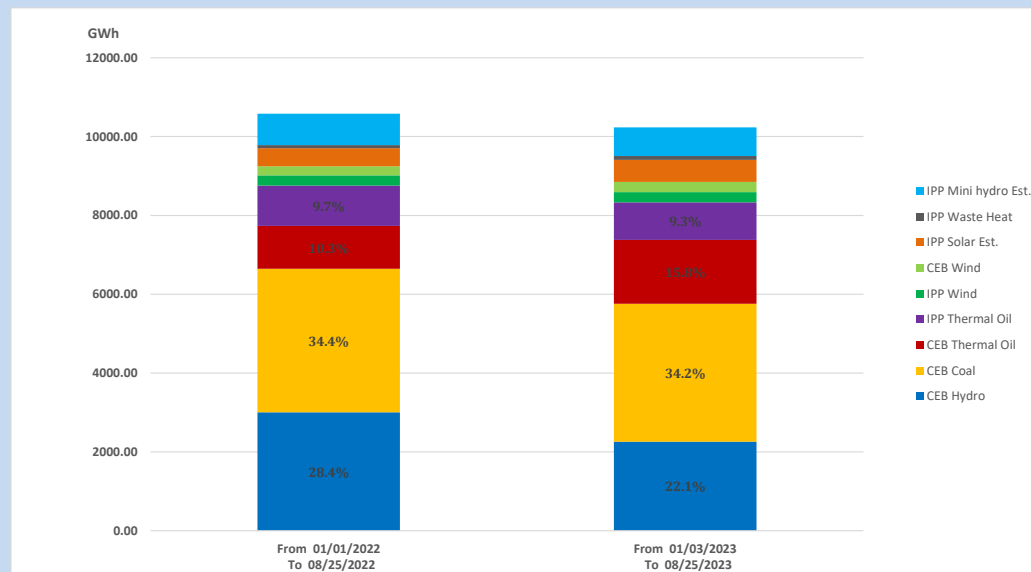
## Solar Generation during

August 25, 2023

Based on Telemetered Power Stations only



## 15. Cumulative Dispatch Comparison with Last Year



Cumulative dispatch  
 From 01/01/2022 To 08/25/2022  
 From 01/03/2023 To 08/25/2023

10582 GWh  
 10232 GWh

The above figures are including contribution from roof top solar, non telemetered solar and mini hydro plants (figures have been adjusted based on the data from the CEB monthly review reports.)

Thermal Plant Fuel types

Table 08

Power Station	Primary Fuel
CEB Thermal	
Sapugaskanda 1	Heavy Fuel
Sapugaskanda 2	Heavy Fuel
Kelanitissa Small Gas Turbines	Auto Diesel
GT 7 - Kelanitissa	Auto Diesel
Kelanitissa CCY	Naphtha or Diesel
Lakvijaya 1	Coal
Lakvijaya 2	Coal
Lakvijaya 3	Coal
Uthuru Janani	Heavy Fuel
Barge CEB	Heavy Fuel
KCCPS -2	Auto Diesel

Power Station	Primary Fuel
Private Thermal	
West Coast	Auto Diesel / Heavy Fuel
ACE Matara	Heavy Fuel

Major Incidents reported during the day

August 25, 2023

- 1) Samanalawewa full load generation restricted, in order to comply with the operation constraints initiated by propagation of air bubbles at reservoir intake, which would further course for the possible formation of vortex at the same place, due to the severe depletion of Samanalawewa reservoir storage.