

Generation and Reservoirs Statistics

August 24, 2023



PUBLIC UTILITIES COMMISSION OF SRI LANKA

1. Daily Generation Mix in MWh

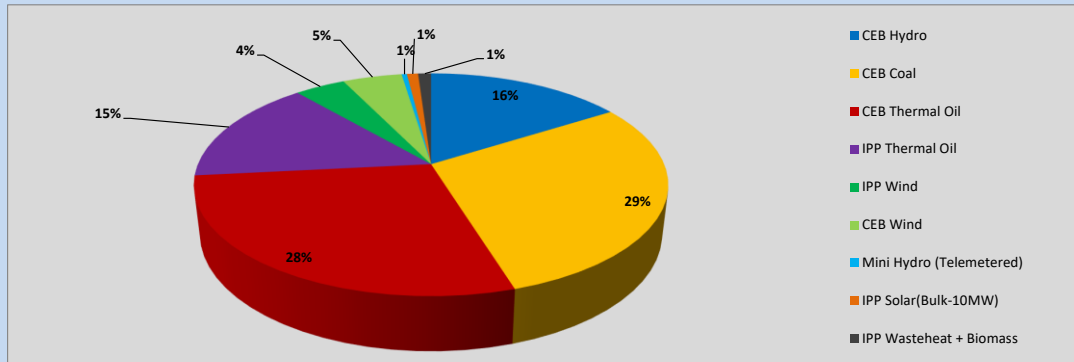


Table 01

	Generation (MWh)
CEB Hydro	7,166
CEB Coal	13,017
CEB Thermal Oil	12,561
IPP Thermal Oil	6,817
IPP Wind	1,837
CEB Wind	2,160
Mini Hydro (Telemetered)	192
IPP Solar (Bulk)	407
IPP Waste heat + Biomass	472
Total Generation (Excluding estimated figures)	44,629
* Estimated unserved energy	0
* Estimated Mini Hydro (Non telemetered)	3578
* Estimated IPP Solar PV (Bulk 1-10MW)	304
* Estimated Solar Roof Top PV	1650
Total Generation (Including estimated figures)	50,161

* Estimated figures of CEB generation report

Table 02

	Installed Capacity (MW)
CEB Hydro	1409
CEB Coal	810
CEB Thermal Oil	781
IPP Thermal Oil (West Coast, ACE Matara)	294
IPP Wind	148
CEB Wind	100
Mini Hydro	416
IPP Waste heat + Biomass	50
IPP Solar	130
Rooftop Solar* (Ordinary)	267
Rooftop Solar* (LT Bulk)	256
Rooftop Solar* (HT Bulk)	61

Data Source - Monthly Review Report [May-2023]

2. Cumulative Dispatch

Following data excludes the contribution from roof top solar, non telemetered solar and mini hydro plants

Table 03 - Current Month

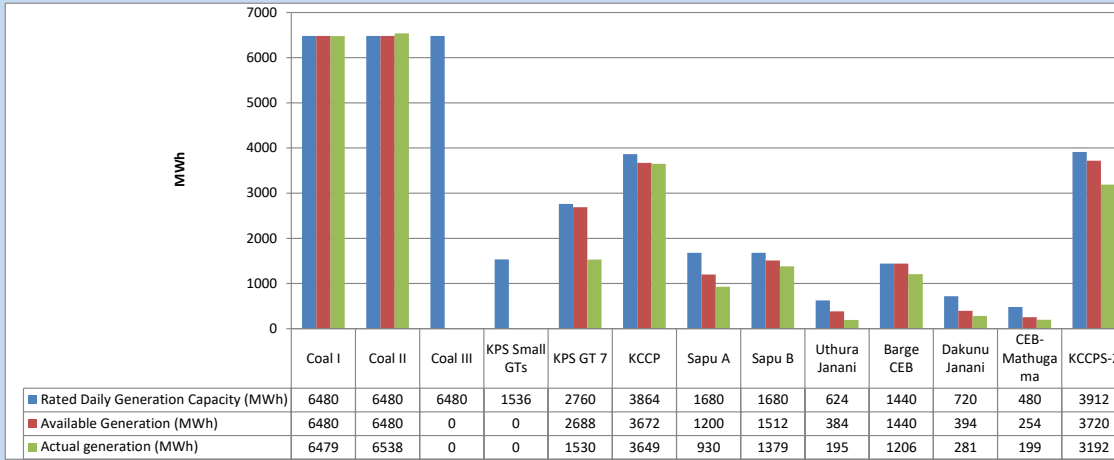
Category	Dispatch (GWh)	
CEB Hydro	211	20.97%
CEB Coal	244	24.25%
CEB Thermal Oil	304	30.19%
IPP Thermal	143	14.18%
SPP Wind	38	3.72%
CEB Wind	40	3.97%
Mini Hydro (Telemetered)	7	0.70%
IPP Solar(Bulk-10MW)	9	0.86%
IPP Waste heat + BMP	12	1.17%
Total	1,008	

Table 04 - Current Year

Category	Dispatch (GWh)	
CEB Hydro	2,258	24.61%
CEB Coal	3,494	38.08%
CEB Thermal Oil	1,608	17.53%
IPP Thermal	947	10.32%
SPP Wind	248	2.70%
CEB Wind	256	2.79%
Mini Hydro (Telemetered)	208	2.27%
IPP Solar(Bulk-10MW)	72	0.78%
IPP Waste heat	85	0.92%
Total	9,176	

3. CEB owned Thermal Plant Dispatch

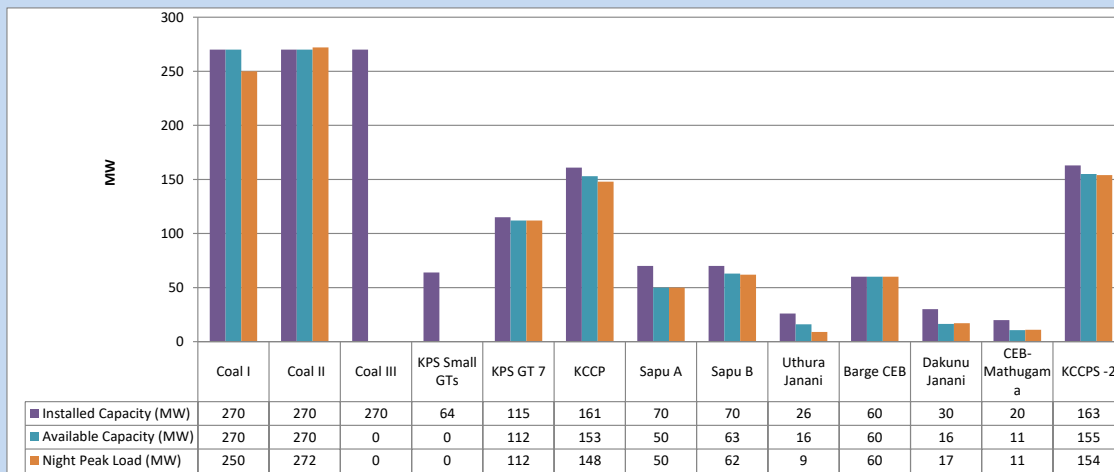
August 24, 2023



Available Generation is estimated based on plant availability at 6.00am on

August 25, 2023

4. CEB owned Thermal Plant Loading at the Night Peak

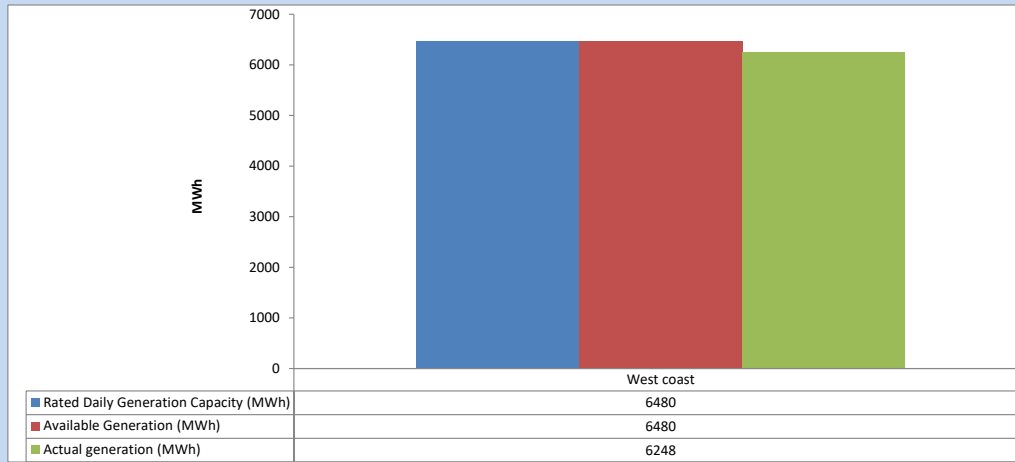


Plant availability is recorded at 6.00 am on

August 25, 2023

5. IPP owned Thermal Plant Dispatch

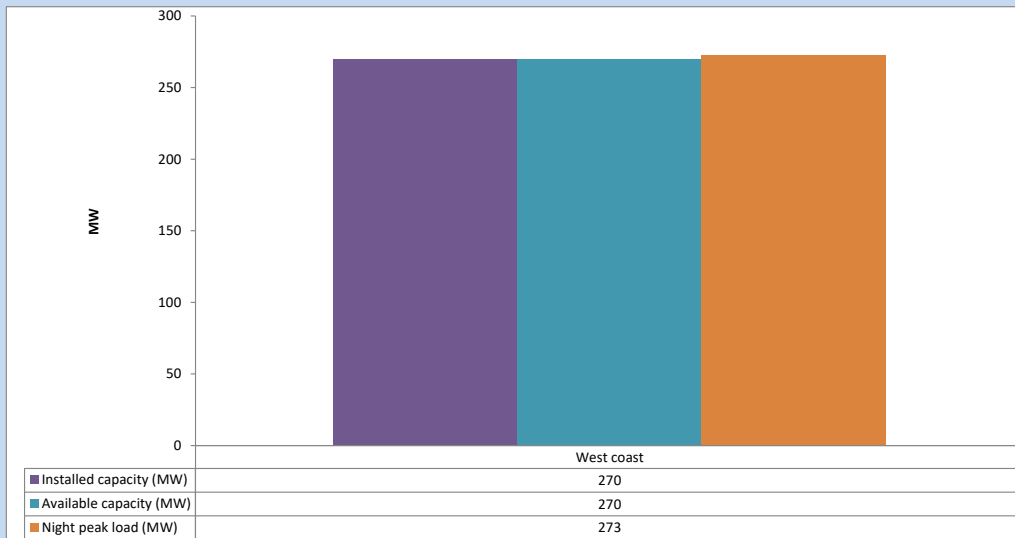
August 24, 2023



Available Generation is estimated based on plant availability at 6.00am on

August 25, 2023

6. IPP owned Thermal Plant Loading at the Night Peak

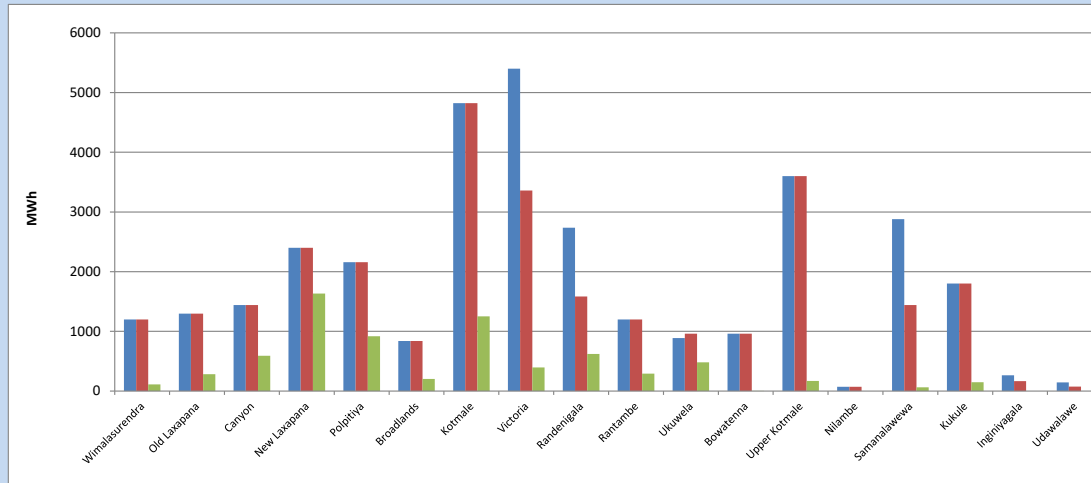


Plant availability is recorded at 6.00 am on

August 25, 2023

7. Major Hydro Plant Dispatch

August 24, 2023

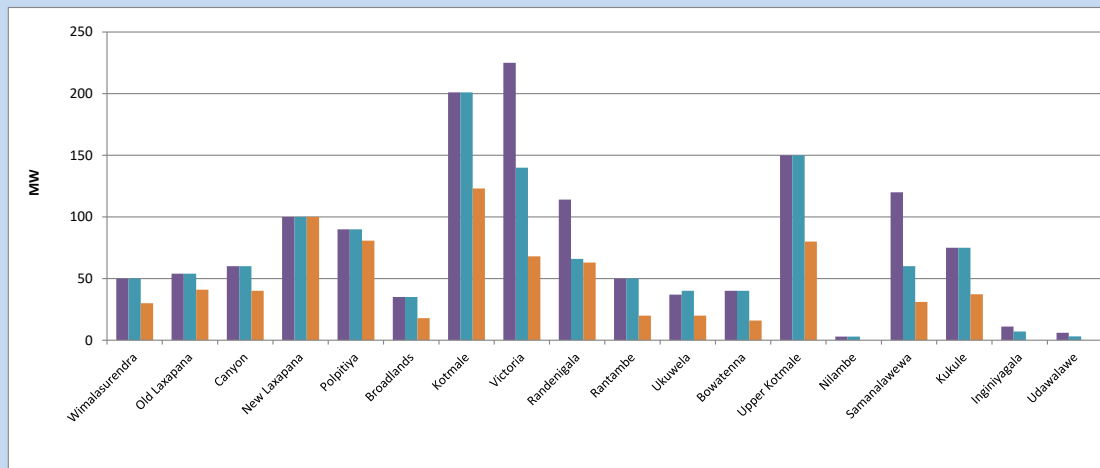


Available Generation is estimated based on plant availability at 6.00am on August 25, 2023
Broadlands power plant is operating in the Commissioning Stage

August 25, 2023

8. Major Hydro Plant Loading at Night Peak

August 24, 2023



Plant availability is recorded at 6.00 am on August 25, 2023
Broadlands power plant is operating in the Commissioning Stage

August 25, 2023

9. Summary of Major Plant performance

Table 05

Plant	Installed Capacity (MW)	Plant Availability (MW)	Night peak Load (MW)	Plant Dispatch (MWh)
Wimalasurendra	50	50	30	111
Old Laxapana	54	54	41	284
Canyon	60	60	40	590
New Laxapana	100	100	100	1,633
Polpitiya	90	90	81	918
Broadlands	35	35	18	204
Kotmale	201	201	123	1,250
Victoria	225	140	68	397
Randenigala	114	66	63	621
Rantambe	50	50	20	291
Ukuwela	37	40	20	482
Bowatenna	40	40	16	2
Upper Kotmale	150	150	80	170
Nilambe	3	3	0	0
Samanalawewa	120	60	31	64
Kukule	75	75	37	149
Inginiyagala	11	7	0	0
Udawalawe	6	3	0	0
Puttalam Coal I	270	270	250	6,479
Puttalam Coal II	270	270	272	6,538
Puttalam Coal III	270	0	0	0
KPS Small GTs	64	0	0	0
KPS GT 7	115	112	112	1,530
KCCP	161	153	148	3,649
Sapugaskanda A	70	50	50	930
Sapugaskanda B	70	63	62	1,379
Uthura Janani	26	16	9	195
Barge CEB	60	60	60	1,206
CEB-Hambantota	30	16	17	281
CEB-Mathugama	20	11	11	199
ACE Matara	24	0	0	0
Asia Power	50	0	0	0
KCCPS -2	163	155	154	3,192
West Coast	270	270	273	6,248
Nothern Power	36	0	0	0
ACE Embilipitiya	93	0	0	0
Total	3,483	2,670	2,331	44,060

Plant availability is the availability recorded at 6 am on

August 25, 2023

10. Contribution to the Night Peak in MW

August 24, 2023

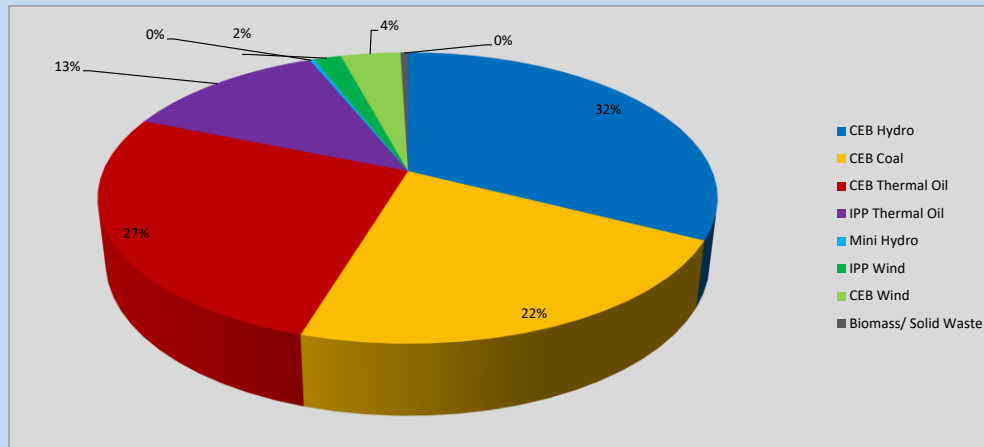


Table 06

CEB Hydro	763	MW
CEB Coal	522	MW
CEB Thermal Oil	623	MW
IPP Thermal Oil	297	MW
Mini Hydro (Telemetered)	7	MW
IPP Wind	40.1	MW
CEB Wind	87.5	MW
Biomass/ Solid Waste	11	MW

Recorded Peak Demand Data

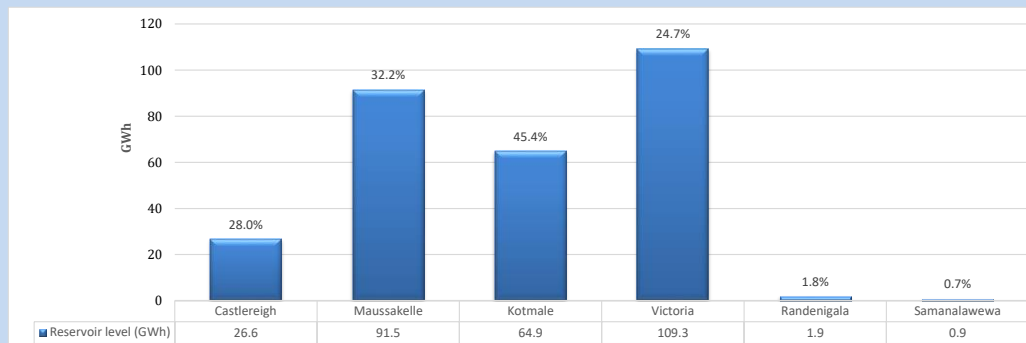
Table 07

Night Peak*	2,350	MW
Day Peak Maximum Demand	2,025	MW
Day Peak Minimum Demand	1,761	MW
Off Peak Minimum Demand	1,411	MW

Above figures are excluding contribution from roof top solar, non telemetered solar and mini hydro plants

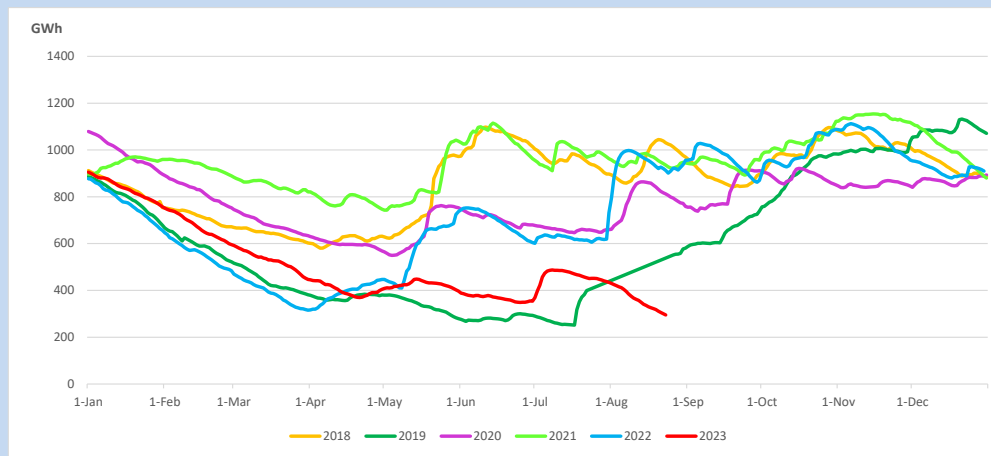
Reservoir Levels -

as at 06.00 Hr on August 25, 2023

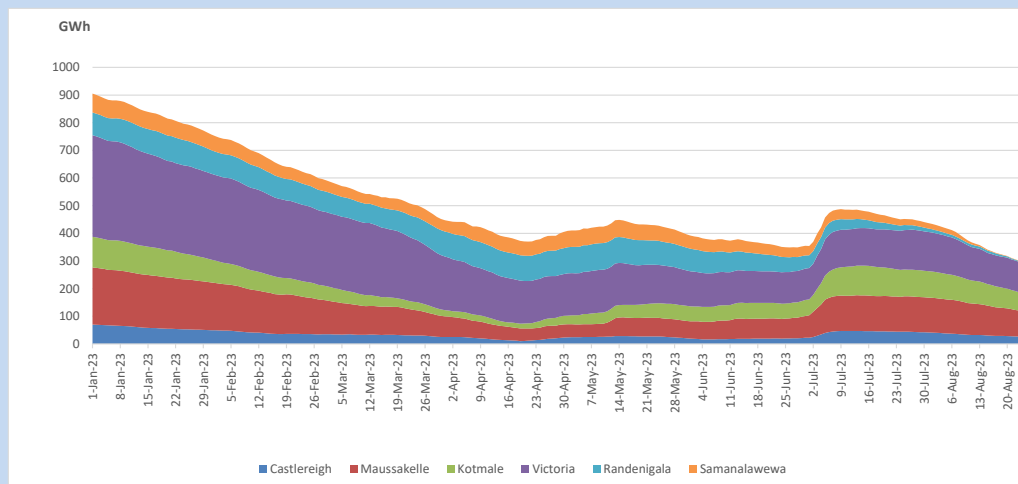


Total Reservoir Level 295.1 GWh
% of Total capacity 24.6%

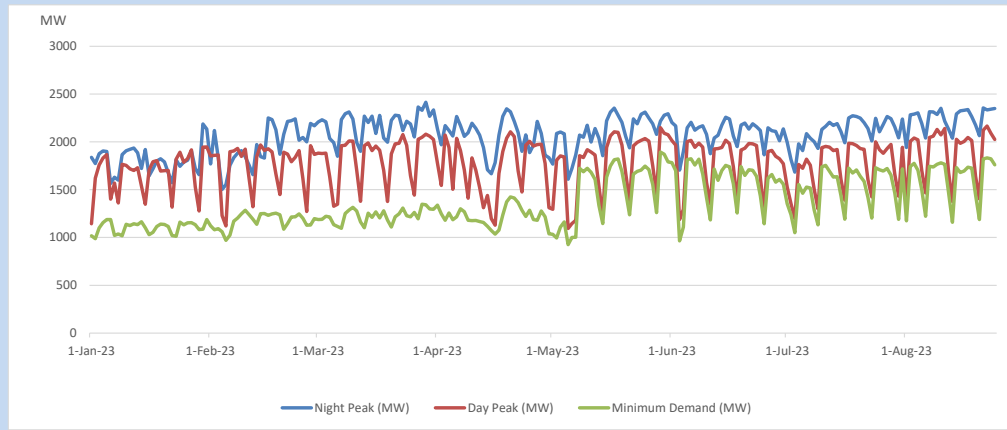
11. Comparison of Total Reservoir Storage Levels with Past Years



12. Variation of Major Hydro Reservoir Levels in the current year (GWh)



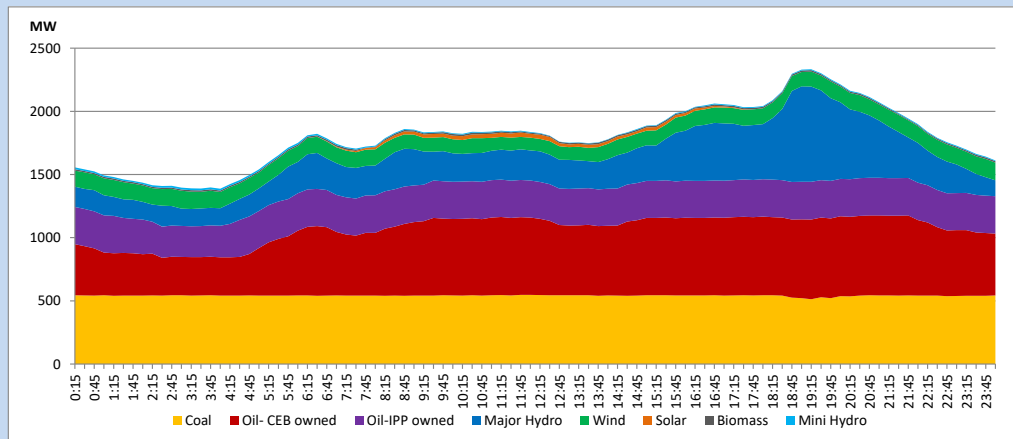
13. Variation of Demand during the current year



The above figures are excluding contribution from roof top solar, non telemetered solar and mini hydro plants

14. Daily Load Curve

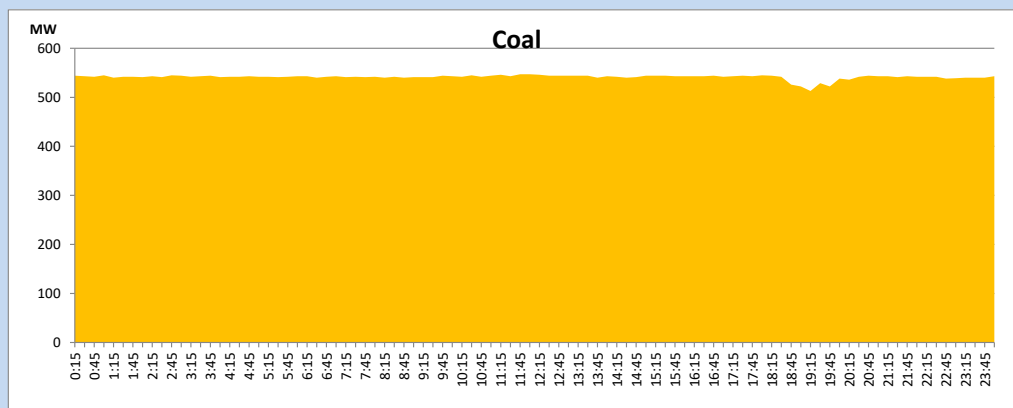
August 24, 2023



Solar and wind data is based on Telemetered Power Stations only

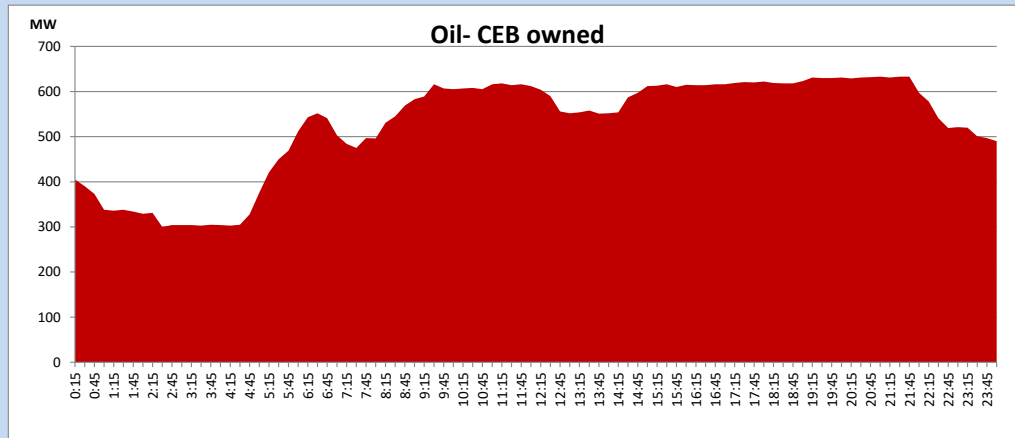
Coal Generation during

August 24, 2023



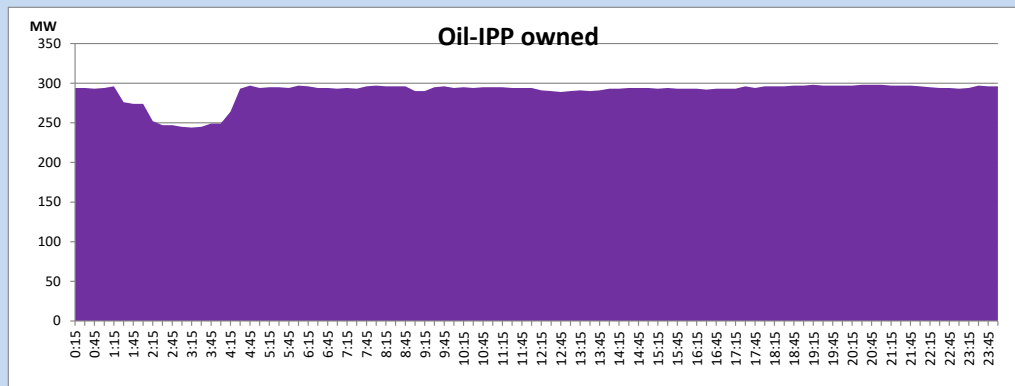
CEB Oil Plant Generation during

August 24, 2023



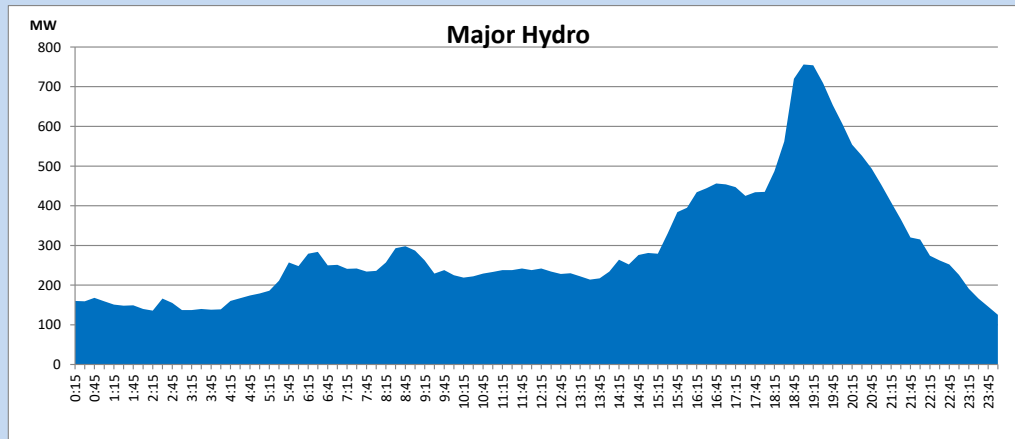
IPP Oil Plant Generation during

August 24, 2023



Major Hydro Generation during

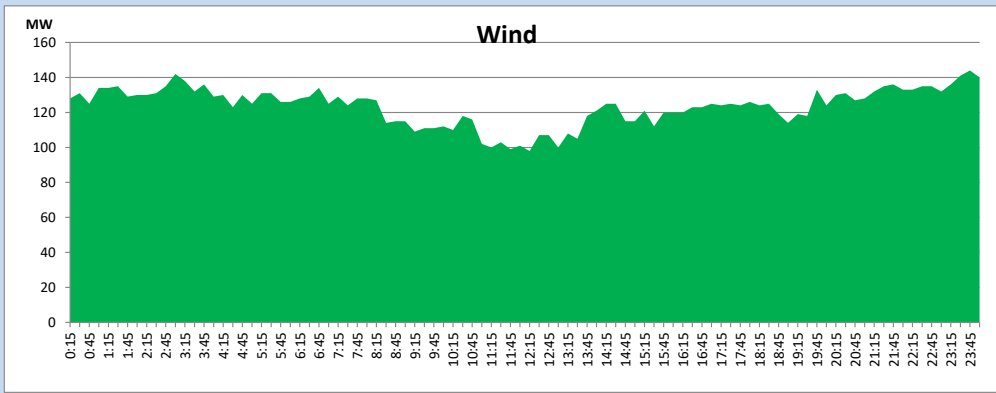
August 24, 2023



Wind Generation during

August 24, 2023

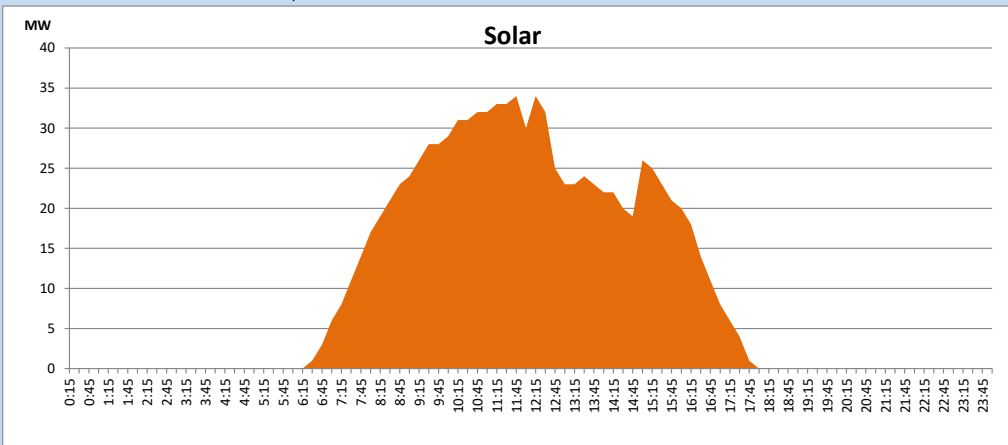
Based on Telemetered Power Stations only



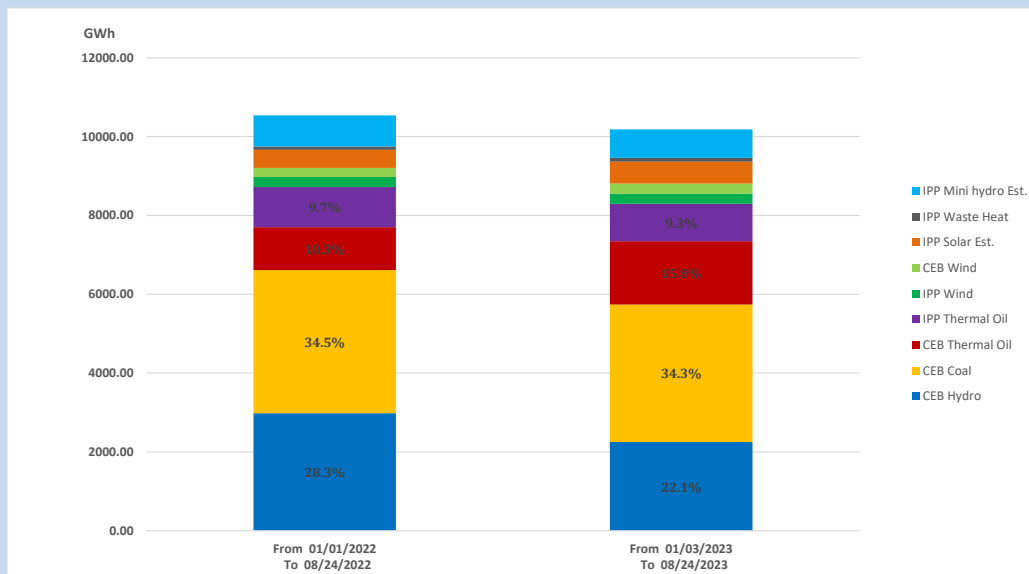
Solar Generation during

August 24, 2023

Based on Telemetered Power Stations only



15. Cumulative Dispatch Comparison with Last Year



Cumulative dispatch
From 01/01/2022 To 08/24/2022

10537 GWh

From 01/01/2023 To 08/24/2023

10182 GWh

The above figures are including contribution from roof top solar, non telemetered solar and mini hydro plants (figures have been adjusted based on the data from the CEB monthly review reports.)

Thermal Plant Fuel types

Table 08

Power Station	Primary Fuel
CEB Thermal	
Sapugaskanda 1	Heavy Fuel
Sapugaskanda 2	Heavy Fuel
Kelanitissa Small Gas Turbines	Auto Diesel
GT 7 - Kelanitissa	Auto Diesel
Kelanitissa CCY	Naphtha or Diesel
Lakvijaya 1	Coal
Lakvijaya 2	Coal
Lakvijaya 3	Coal
Uthuru Janani	Heavy Fuel
Barge CEB	Heavy Fuel
KCCPS -2	Auto Diesel

Power Station	Primary Fuel
Private Thermal	
West Coast	Auto Diesel / Heavy Fuel
ACE Matara	Heavy Fuel

Major Incidents reported during the day

August 24, 2023

- 1) Samanalawewa full load generation restricted, in order to comply with the operation constraints initiated by propagation of air bubbles at reservoir intake, which would further course for the possible formation of vortex at the same place, due to the severe depletion of Samanalawewa reservoir storage.
- 2) LVPS unit 01 de-loaded to 221MW (net) due to the clogging of a coal-mill at 18:33hrs. LVPS unit 01 reached full load 270MW (net) at 20:06hrs.