

Generation and Reservoirs Statistics

August 22, 2023



PUBLIC UTILITIES COMMISSION OF SRI LANKA

1. Daily Generation Mix in MWh

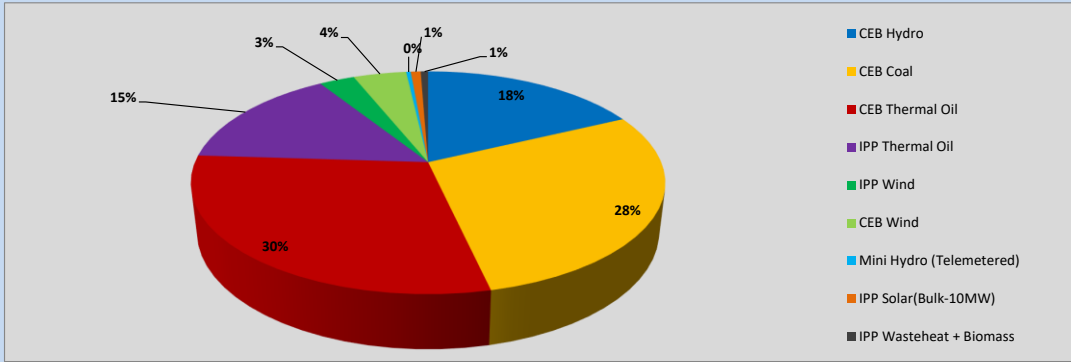


Table 01

	Generation (MWh)
CEB Hydro	8,077
CEB Coal	12,876
CEB Thermal Oil	13,328
IPP Thermal Oil	6,767
IPP Wind	1,300
CEB Wind	1,950
Mini Hydro (Telemetered)	168
IPP Solar (Bulk)	365
IPP Waste heat + Biomass	272
Total Generation (Excluding estimated figures)	45,103
* Estimated unserved energy	0
* Estimated Mini Hydro (Non telemetered)	3602
* Estimated IPP Solar PV (Bulk 1-10MW)	304
* Estimated Solar Roof Top PV	1650
Total Generation (Including estimated figures)	50,659

* Estimated figures of CEB generation report

Table 02

	Installed Capacity (MW)
CEB Hydro	1409
CEB Coal	810
CEB Thermal Oil	781
IPP Thermal Oil (West Coast, ACE Matara)	294
IPP Wind	148
CEB Wind	100
Mini Hydro	416
IPP Waste heat + Biomass	50
IPP Solar	130
Rooftop Solar* (Ordinary)	267
Rooftop Solar* (LT Bulk)	256
Rooftop Solar* (HT Bulk)	61

Data Source - Monthly Review Report [May-2023]

2. Cumulative Dispatch

Following data excludes the contribution from roof top solar, non telemetered solar and mini hydro plants

Table 03 - Current Month

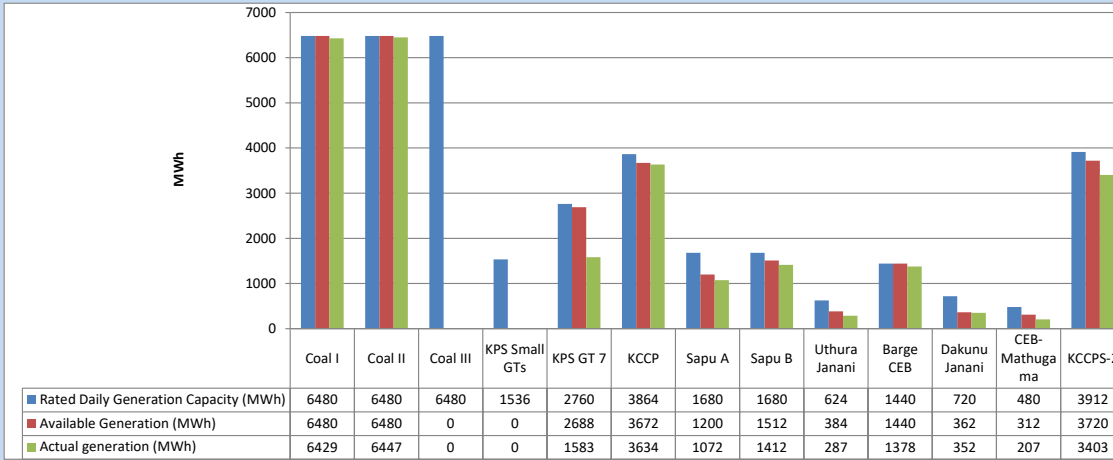
Category	Dispatch (GWh)	
CEB Hydro	188	21.56%
CEB Coal	205	23.52%
CEB Thermal Oil	266	30.40%
IPP Thermal	123	14.02%
SPP Wind	33	3.76%
CEB Wind	34	3.90%
Mini Hydro (Telemetered)	6	0.74%
IPP Solar(Bulk-10MW)	8	0.87%
IPP Waste heat + BMP	11	1.21%
Total	874	

Table 04 - Current Year

Category	Dispatch (GWh)	
CEB Hydro	2,235	24.72%
CEB Coal	3,455	38.22%
CEB Thermal Oil	1,569	17.36%
IPP Thermal	926	10.24%
SPP Wind	243	2.69%
CEB Wind	251	2.77%
Mini Hydro (Telemetered)	208	2.30%
IPP Solar(Bulk-10MW)	71	0.78%
IPP Waste heat	83	0.92%
Total	9,042	

3. CEB owned Thermal Plant Dispatch

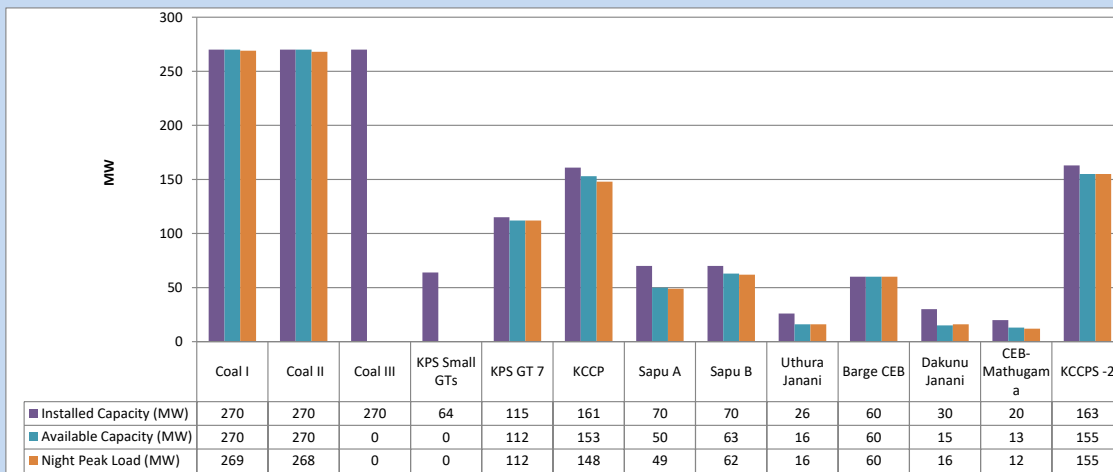
August 22, 2023



Available Generation is estimated based on plant availability at 6.00am on

August 23, 2023

4. CEB owned Thermal Plant Loading at the Night Peak

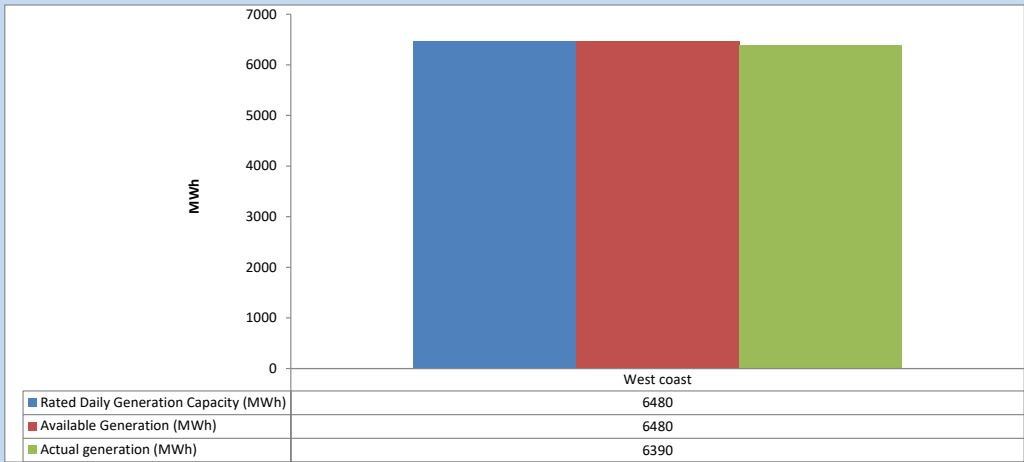


Plant availability is recorded at 6.00 am on

August 23, 2023

5. IPP owned Thermal Plant Dispatch

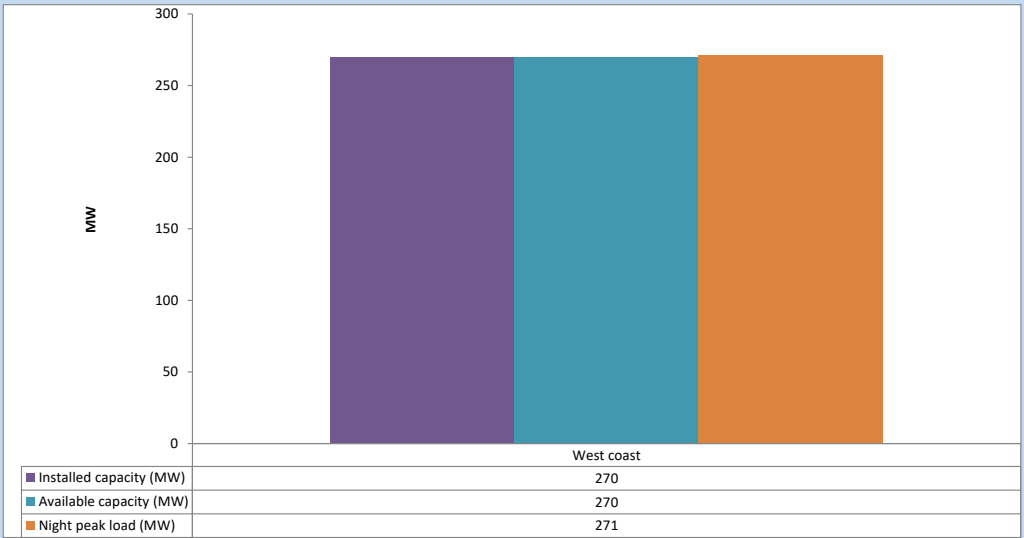
August 22, 2023



Available Generation is estimated based on plant availability at 6.00am on

August 23, 2023

6. IPP owned Thermal Plant Loading at the Night Peak

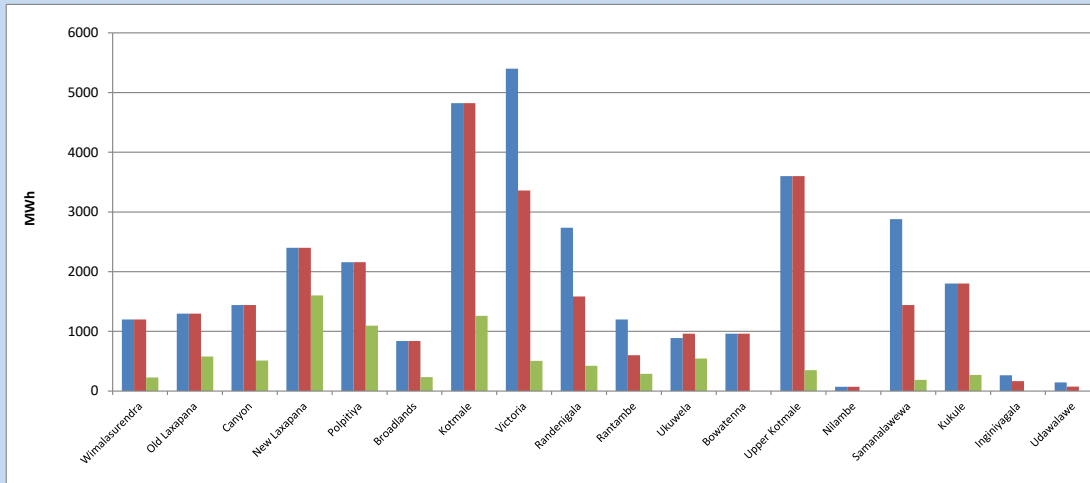


Plant availability is recorded at 6.00 am on

August 23, 2023

7. Major Hydro Plant Dispatch

August 22, 2023

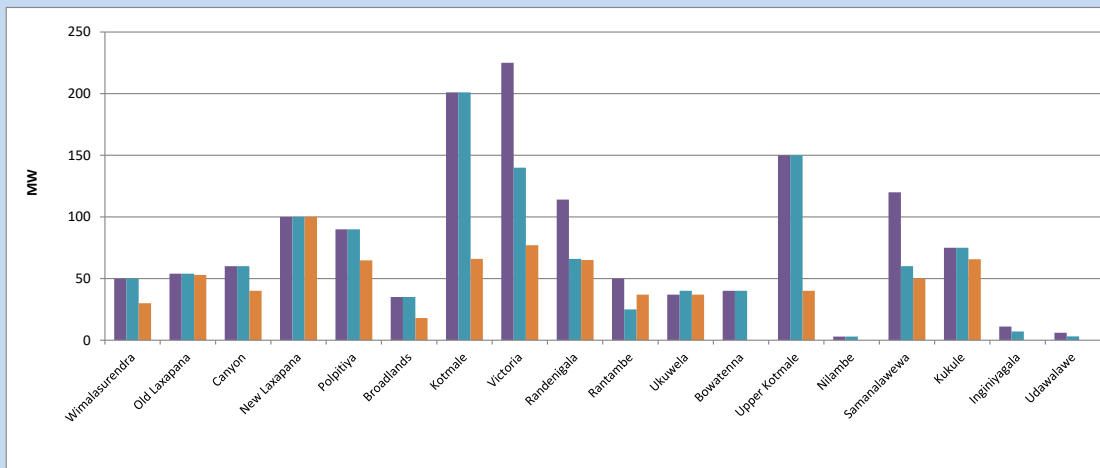


Available Generation is estimated based on plant availability at 6.00am on August 23, 2023
Broadlands power plant is operating in the Commissioning Stage

August 23, 2023

8. Major Hydro Plant Loading at Night Peak

August 22, 2023



Plant availability is recorded at 6.00 am on August 23, 2023
Broadlands power plant is operating in the Commissioning Stage

August 23, 2023

9. Summary of Major Plant performance

Table 05

Plant	Installed Capacity	Plant Availability	Night peak Load	Plant Dispatch
	(MW)	(MW)	(MW)	(MWh)
Wimalasurendra	50	50	30	227
Old Laxapana Canyon	54	54	53	578
New Laxapana	60	60	40	513
Polpitiya	100	100	100	1,602
Broadlands	90	90	65	1,094
Kotmale	35	35	18	233
Victoria	201	201	66	1,260
Randenigala	225	140	77	506
Rantambe	114	66	65	423
Ukuwela	50	25	37	290
Bowatenna	37	40	37	544
Upper Kotmale	40	40	0	0
Nilambe	150	150	40	350
Samanalawewa	3	3	0	0
Kukule	120	60	50	187
Inginiyagala	75	75	66	270
Udawalawe	11	7	0	0
Puttalam Coal I	6	3	0	0
Puttalam Coal II	270	270	269	6,429
Puttalam Coal III	270	270	268	6,447
KPS Small GTs	270	0	0	0
KPS GT 7	64	0	0	0
KCCP	115	112	112	1,583
Sapugaskanda A	161	153	148	3,634
Sapugaskanda B	70	50	49	1,072
Uthura Janani	70	63	62	1,412
Barge CEB	26	16	16	287
CEB-Hambantota	60	60	60	1,378
CEB-Mathugama	30	15	16	352
ACE Matara	20	13	12	207
Asia Power	24	0	0	0
KCCPS -2	50	0	0	0
West Coast	163	155	155	3,403
Nothern Power	270	270	271	6,390
ACE Embilipitiya	36	0	0	0
Total	93	0	0	0
	3,483	2,646	2,331	44,726

Plant availability is the availability recorded at 6 am on

August 23, 2023

10. Contribution to the Night Peak in MW

August 22, 2023

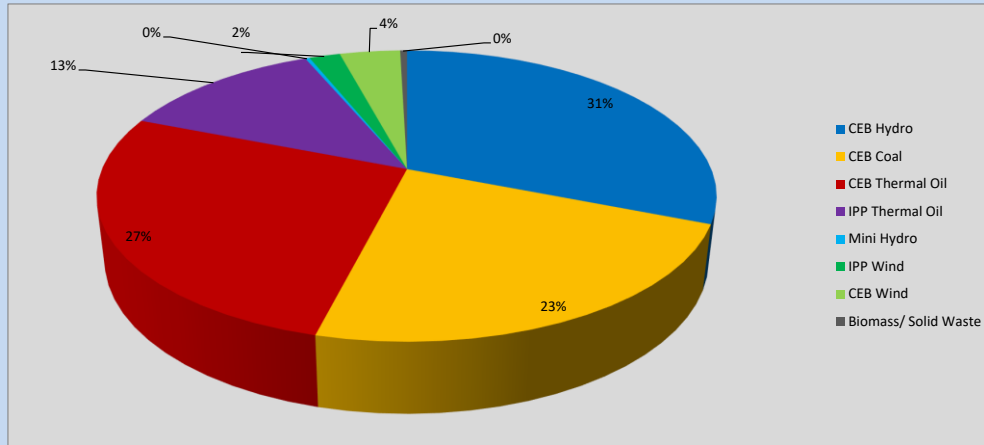


Table 06

CEB Hydro	722	MW
CEB Coal	537	MW
CEB Thermal Oil	630	MW
IPP Thermal Oil	295	MW
Mini Hydro (Telemetered)	6	MW
IPP Wind	45	MW
CEB Wind	87.9	MW
Biomass/ Solid Waste	10	MW

Recorded Peak Demand Data

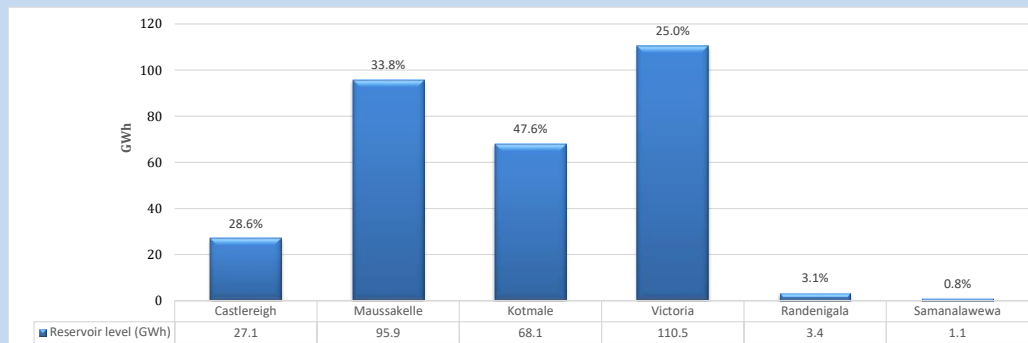
Table 07

Night Peak*	2,334	MW
Day Peak Maximum Demand	2,166	MW
Day Peak Minimum Demand	1,834	MW
Off Peak Minimum Demand	1,429	MW

Above figures are excluding contribution from roof top solar, non telemetered solar and mini hydro plants

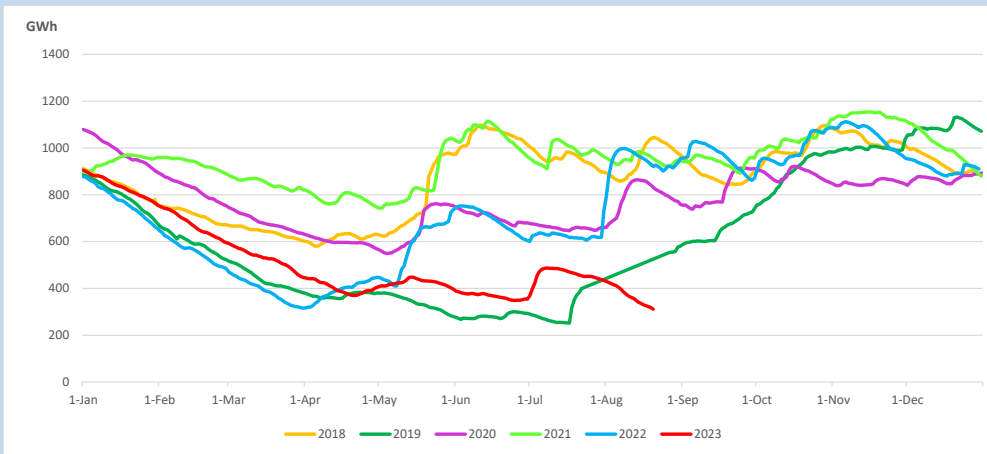
Reservoir Levels -

as at 06.00 Hr on August 23, 2023

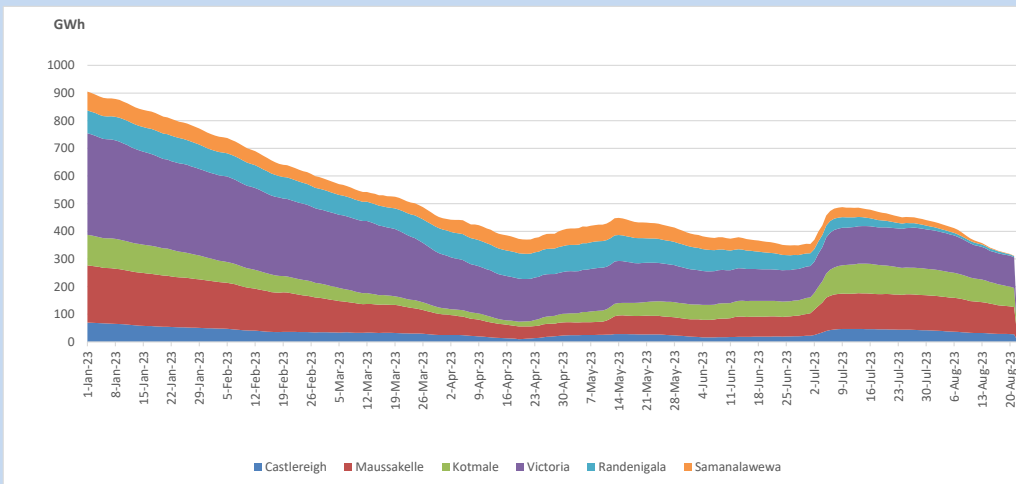


Total Reservoir Level 306.1 GWh
% of Total capacity 25.3%

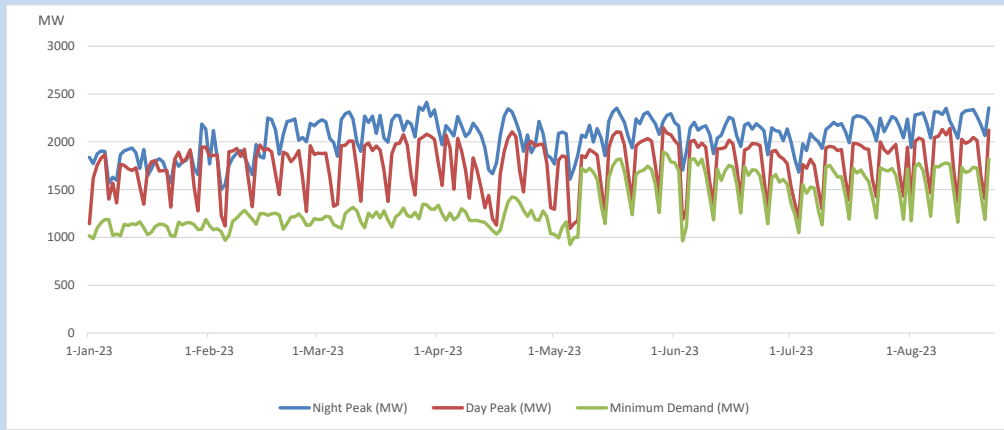
11. Comparison of Total Reservoir Storage Levels with Past Years



12. Variation of Major Hydro Reservoir Levels in the current year (GWh)



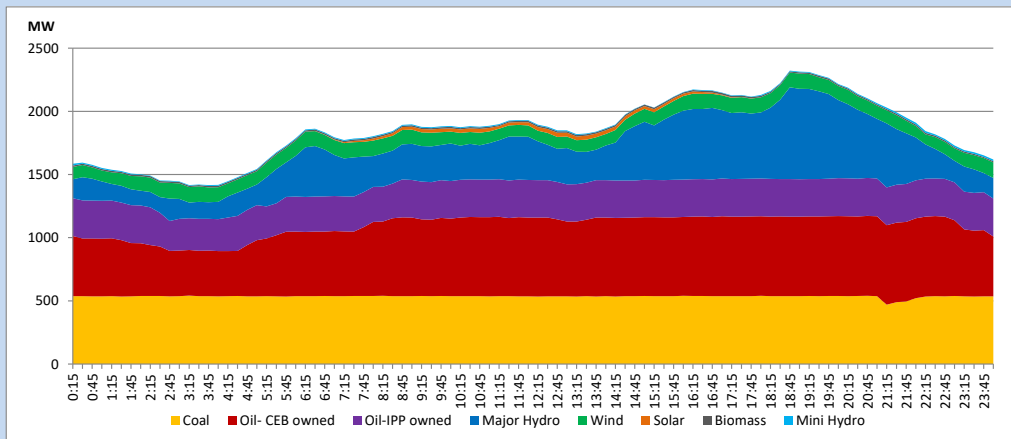
13. Variation of Demand during the current year



The above figures are excluding contribution from roof top solar, non telemetered solar and mini hydro plants

14. Daily Load Curve

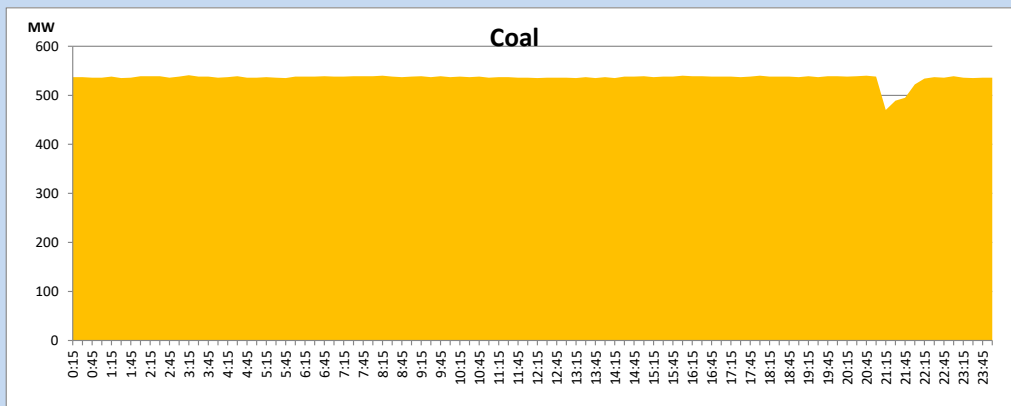
August 22, 2023



Solar and wind data is based on Telemetered Power Stations only

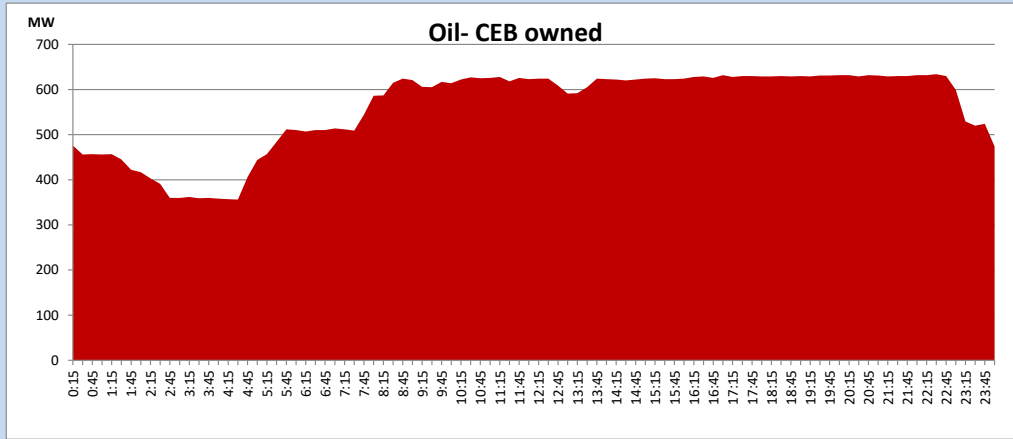
Coal Generation during

August 22, 2023



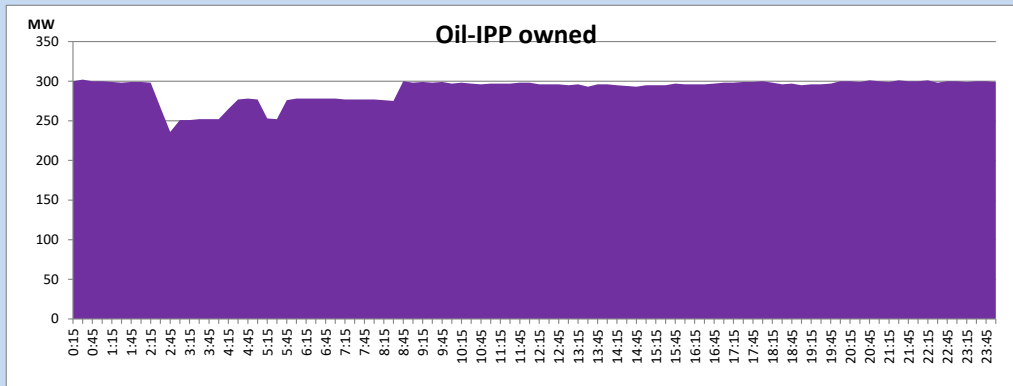
CEB Oil Plant Generation during

August 22, 2023



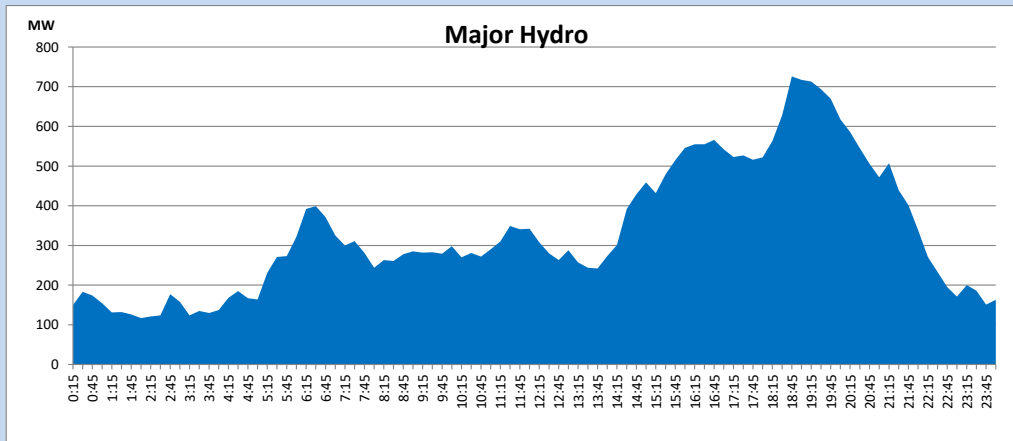
IPP Oil Plant Generation during

August 22, 2023



Major Hydro Generation during

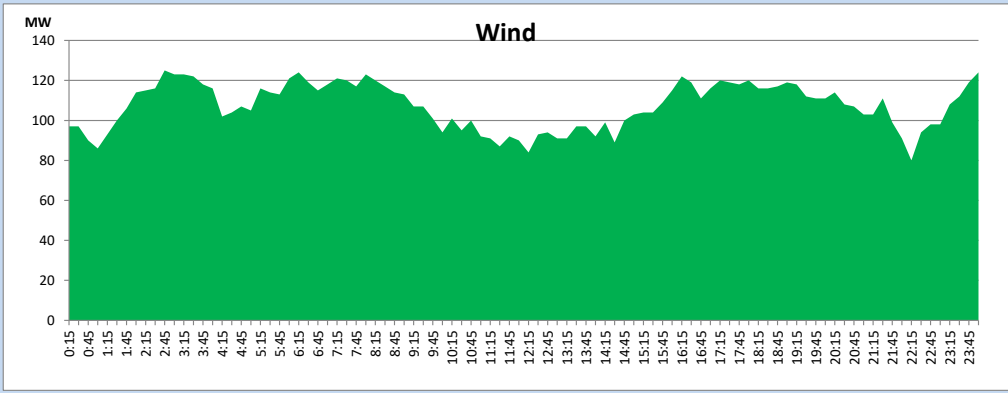
August 22, 2023



Wind Generation during

August 22, 2023

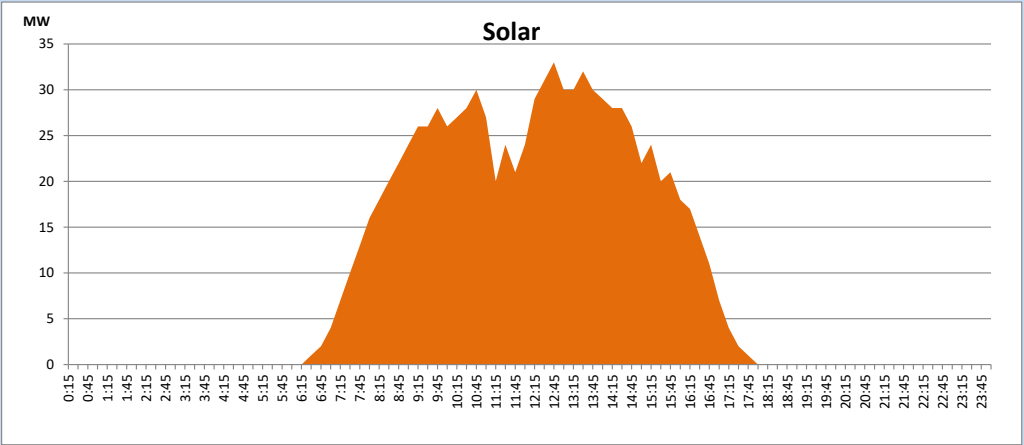
Based on Telemetered Power Stations only



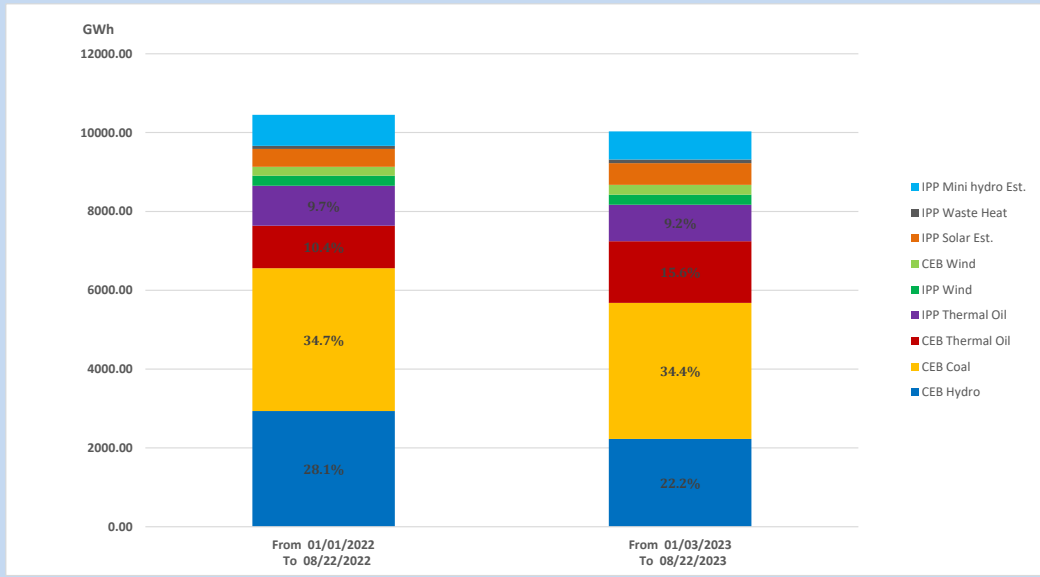
Solar Generation during

August 22, 2023

Based on Telemetered Power Stations only



15. Cumulative Dispatch Comparison with Last Year



Cumulative dispatch

From 01/01/2022 To 08/22/2022

10449 GWh

From 01/01/2023 To 08/22/2023

10031 GWh

The above figures are including contribution from roof top solar, non telemetered solar and mini hydro plants (figures have been adjusted based on the data from the CEB monthly review reports.)

Thermal Plant Fuel types

Table 08

Power Station	Primary Fuel
CEB Thermal	
Sapugaskanda 1	Heavy Fuel
Sapugaskanda 2	Heavy Fuel
Kelanitissa Small Gas Turbines	Auto Diesel
GT 7 - Kelanitissa	Auto Diesel
Kelanitissa CCY	Naphtha or Diesel
Lakvijaya 1	Coal
Lakvijaya 2	Coal
Lakvijaya 3	Coal
Uthuru Janani	Heavy Fuel
Barge CEB	Heavy Fuel
KCCPS -2	Auto Diesel

Power Station	Primary Fuel
Private Thermal	
West Coast	Auto Diesel / Heavy Fuel
ACE Matara	Heavy Fuel

Major Incidents reported during the day

August 22, 2023

- 1) Samanalawewa full load generation restricted, in order to comply with the operation constraints initiated by propagation of air bubbles at reservoir intake, which would further course for the possible formation of vortex at the same place, due to the severe depletion of Samanalawewa reservoir storage.
- 2) ACE -Matara power plant commenced commercial operations at 08:00hrs and reached full load by 08:27hrs.
- 3) New Polpitiya-Hambanthota 220kV cct 01 was energized from New Polpitiya end for the soak test at 19:18hrs.