

Generation and Reservoirs Statistics

August 17, 2023



PUBLIC UTILITIES COMMISSION OF SRI LANKA

1. Daily Generation Mix in MWh

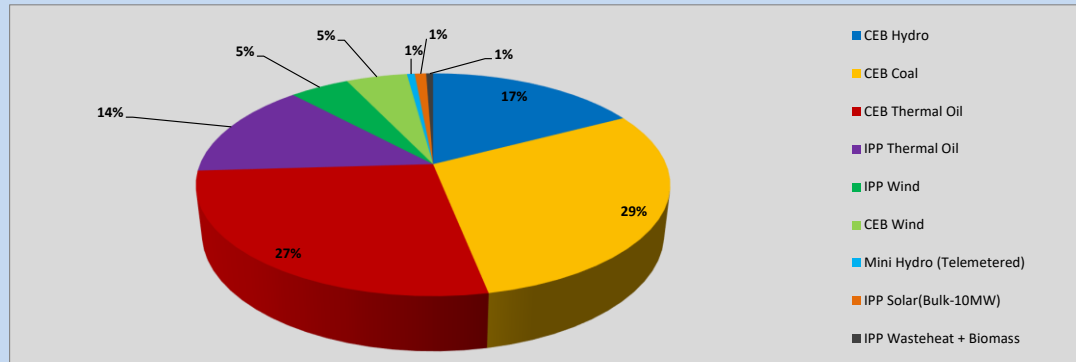


Table 01

	Generation (MWh)
CEB Hydro	7,617
CEB Coal	12,992
CEB Thermal Oil	11,952
IPP Thermal Oil	6,142
IPP Wind	2,134
CEB Wind	2,191
Mini Hydro (Telemetered)	276
IPP Solar (Bulk)	411
IPP Waste heat + Biomass	248
Total Generation (Excluding estimated figures)	43,963
* Estimated unserved energy	0
* Estimated Mini Hydro (Non telemetered)	3494
* Estimated IPP Solar PV (Bulk 1-10MW)	304
* Estimated Solar Roof Top PV	1650
Total Generation (Including estimated figures)	49,411

* Estimated figures of CEB generation report

Table 02

	Installed Capacity (MW)
CEB Hydro	1409
CEB Coal	810
CEB Thermal Oil	781
IPP Thermal Oil (West Coast)	270
IPP Wind	148
CEB Wind	100
Mini Hydro	416
IPP Waste heat + Biomass	50
IPP Solar	130
Rooftop Solar* (Ordinary)	267
Rooftop Solar* (LT Bulk)	256
Rooftop Solar* (HT Bulk)	61

Data Source - Monthly Review Report [May-2023]

2. Cumulative Dispatch

Following data excludes the contribution from roof top solar, non telemetered solar and mini hydro plants

Table 03 - Current Month

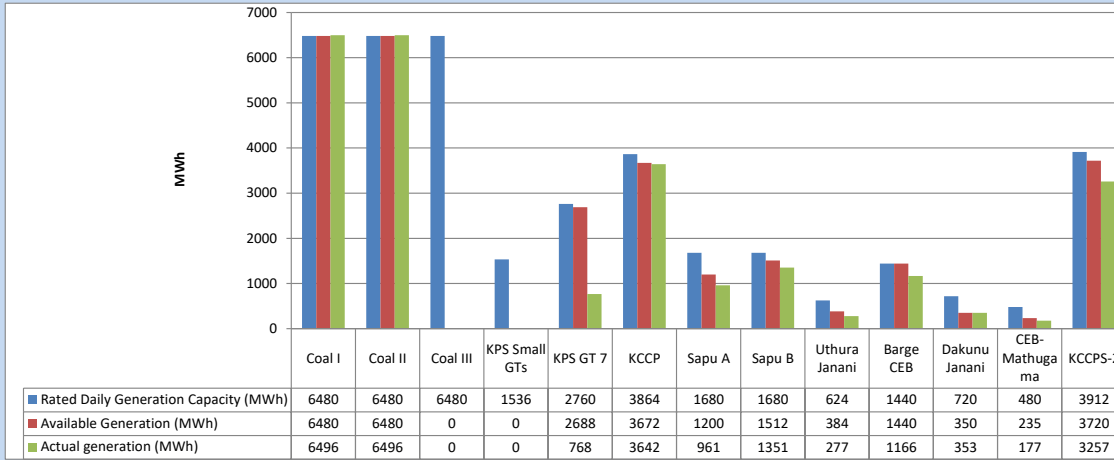
Category	Dispatch (GWh)	
CEB Hydro	160	22.59%
CEB Coal	154	21.68%
CEB Thermal Oil	220	30.92%
IPP Thermal	102	14.42%
SPP Wind	26	3.69%
CEB Wind	27	3.79%
Mini Hydro (Telemetered)	6	0.81%
IPP Solar(Bulk-10MW)	6	0.88%
IPP Waste heat + BMP	9	1.21%
Total	710	

Table 04 - Current Year

Category	Dispatch (GWh)	
CEB Hydro	2,207	24.86%
CEB Coal	3,404	38.34%
CEB Thermal Oil	1,523	17.16%
IPP Thermal	906	10.21%
SPP Wind	236	2.66%
CEB Wind	243	2.74%
Mini Hydro (Telemetered)	207	2.33%
IPP Solar(Bulk-10MW)	69	0.78%
IPP Waste heat	81	0.92%
Total	8,878	

3. CEB owned Thermal Plant Dispatch

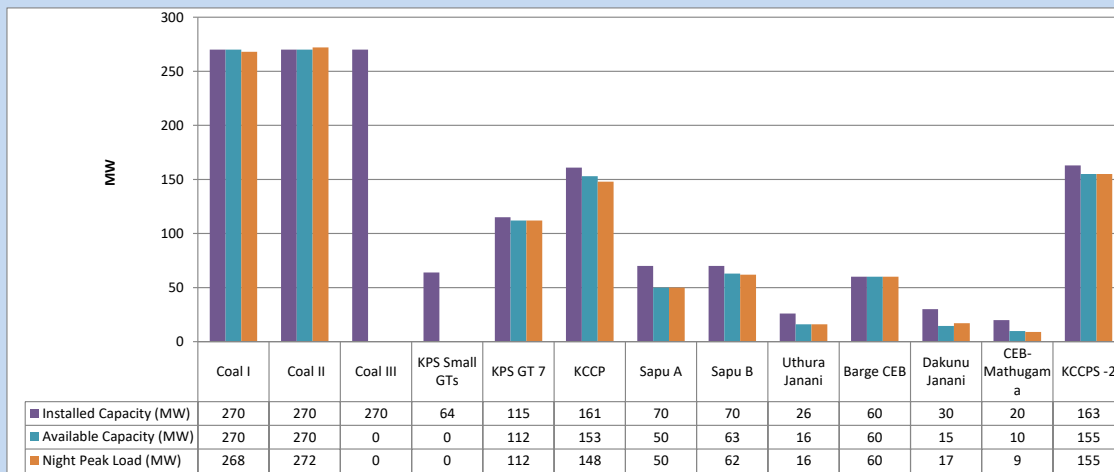
August 17, 2023



Available Generation is estimated based on plant availability at 6.00am on

August 18, 2023

4. CEB owned Thermal Plant Loading at the Night Peak

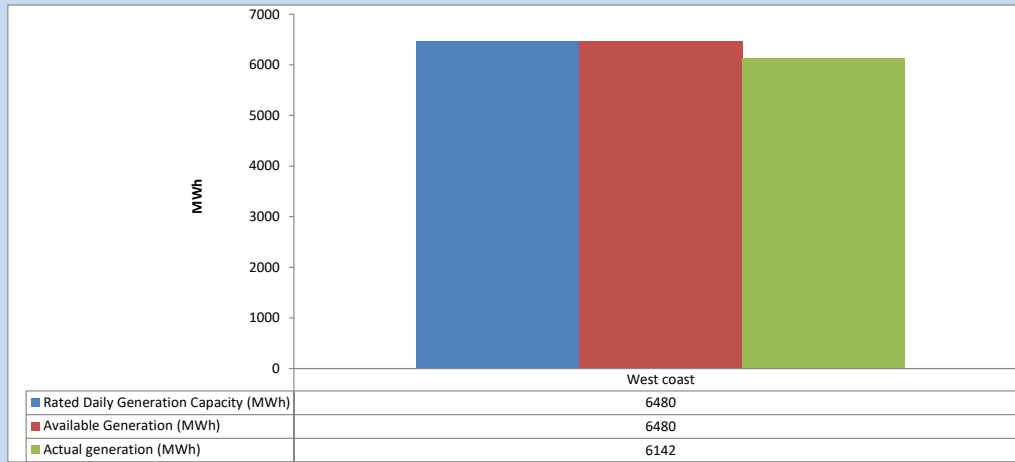


Plant availability is recorded at 6.00 am on

August 18, 2023

5. IPP owned Thermal Plant Dispatch

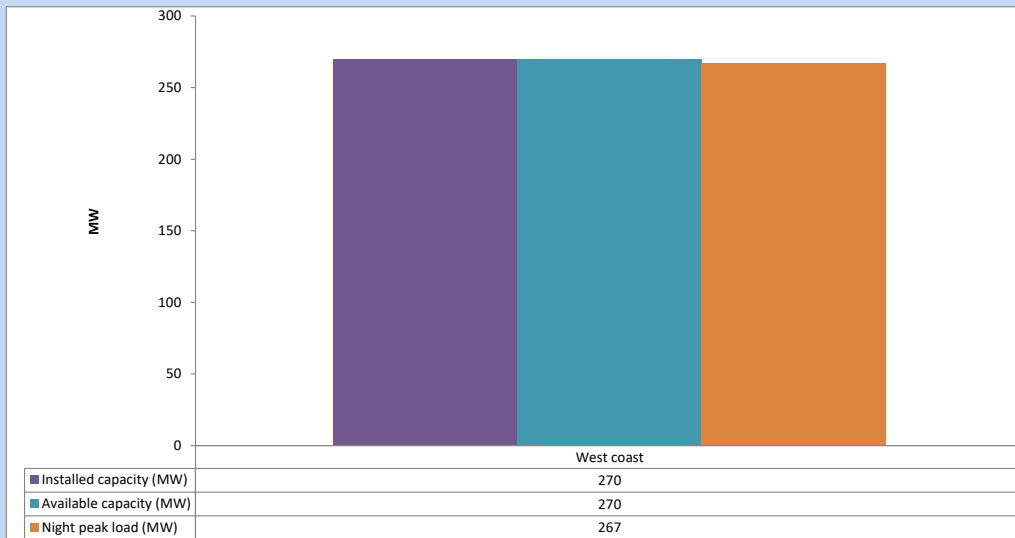
August 17, 2023



Available Generation is estimated based on plant availability at 6.00am on

August 18, 2023

6. IPP owned Thermal Plant Loading at the Night Peak

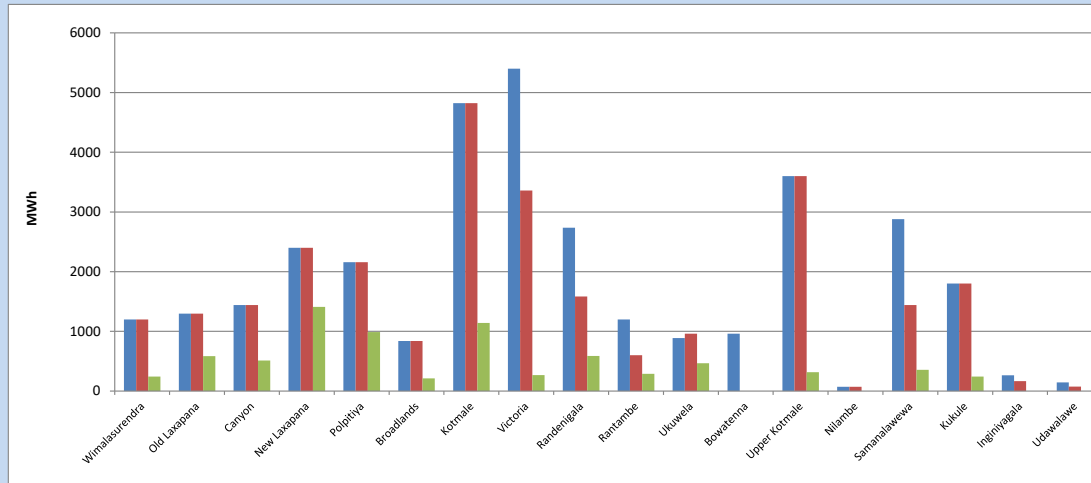


Plant availability is recorded at 6.00 am on

August 18, 2023

7. Major Hydro Plant Dispatch

August 17, 2023

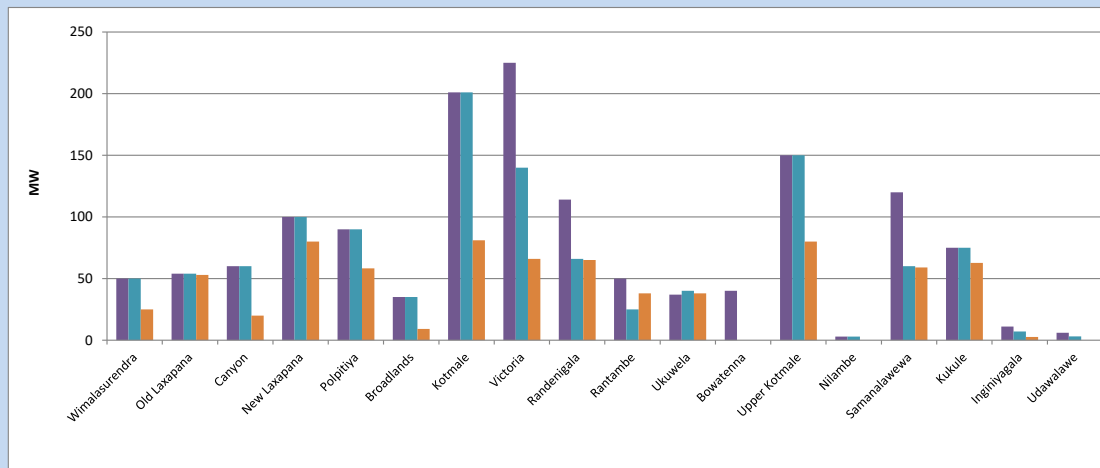


Available Generation is estimated based on plant availability at 6.00am on August 18, 2023
Broadlands power plant is operating in the Commissioning Stage

August 18, 2023

8. Major Hydro Plant Loading at Night Peak

August 17, 2023



Plant availability is recorded at 6.00 am on August 18, 2023
Broadlands power plant is operating in the Commissioning Stage

August 18, 2023

9. Summary of Major Plant performance

Table 05

Plant	Installed Capacity (MW)	Plant Availability (MW)	Night peak Load (MW)	Plant Dispatch (MWh)
Wimalasurendra	50	50	25	242
Old Laxapana	54	54	53	586
Canyon	60	60	20	513
New Laxapana	100	100	80	1,409
Polpitiya	90	90	58	989
Broadlands	35	35	9	212
Kotmale	201	201	81	1,140
Victoria	225	140	66	268
Randenigala	114	66	65	587
Rantambe	50	25	38	288
Ukuwela	37	40	38	466
Bowatenna	40	0	0	0
Upper Kotmale	150	150	80	317
Nilambe	3	3	0	0
Samanalawewa	120	60	59	357
Kukule	75	75	63	243
Inginiyagala	11	7	3	0
Udawalawe	6	3	0	0
Puttalam Coal I	270	270	268	6,496
Puttalam Coal II	270	270	272	6,496
Puttalam Coal III	270	0	0	0
KPS Small GTs	64	0	0	0
KPS GT 7	115	112	112	768
KCCP	161	153	148	3,642
Sapugaskanda A	70	50	50	961
Sapugaskanda B	70	63	62	1,351
Uthura Janani	26	16	16	277
Barge CEB	60	60	60	1,166
CEB-Hambantota	30	15	17	353
CEB-Mathugama	20	10	9	177
ACE Matara	24	0	0	0
Asia Power	50	0	0	0
KCCPS -2	163	155	155	3,257
West Coast	270	270	267	6,142
Nothern Power	36	0	0	0
ACE Embilipitiya	93	0	0	0
Total	3,483	2,603	2,361	43,963

Plant availability is the availability recorded at 6 am on

August 18, 2023

10. Contribution to the Night Peak in MW

August 17, 2023

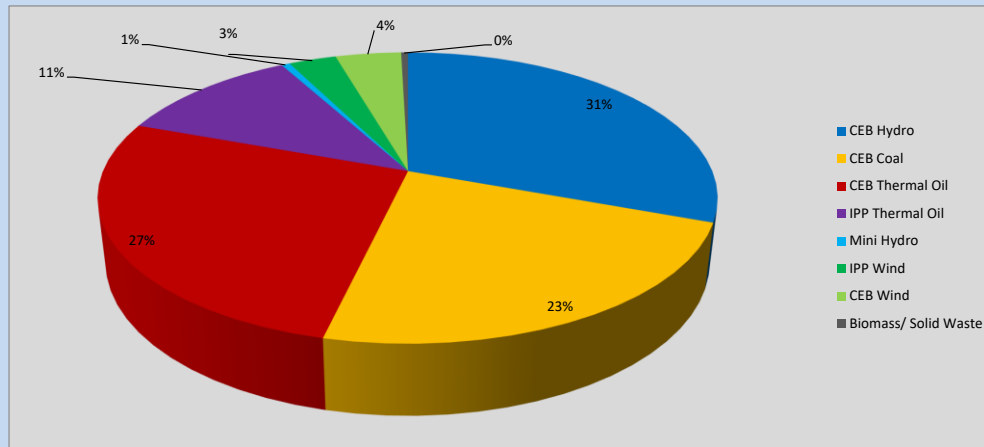


Table 06

CEB Hydro	715	MW
CEB Coal	540	MW
CEB Thermal Oil	629	MW
IPP Thermal Oil	267	MW
Mini Hydro (Telemetered)	12	MW
IPP Wind	69.2	MW
CEB Wind	95.8	MW
Biomass/ Solid Waste	10	MW

Recorded Peak Demand Data

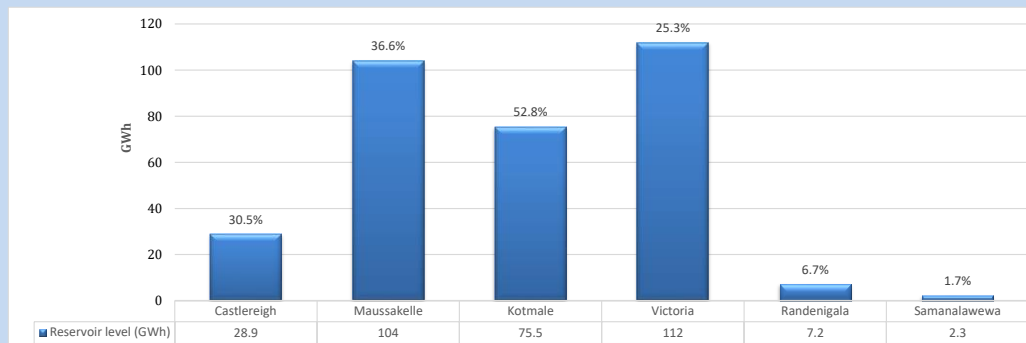
Table 07

Night Peak*	2,338	MW
Day Peak Maximum Demand	2,046	MW
Day Peak Minimum Demand	1,736	MW
Off Peak Minimum Demand	1,385	MW

Above figures are excluding contribution from roof top solar, non telemetered solar and mini hydro plants

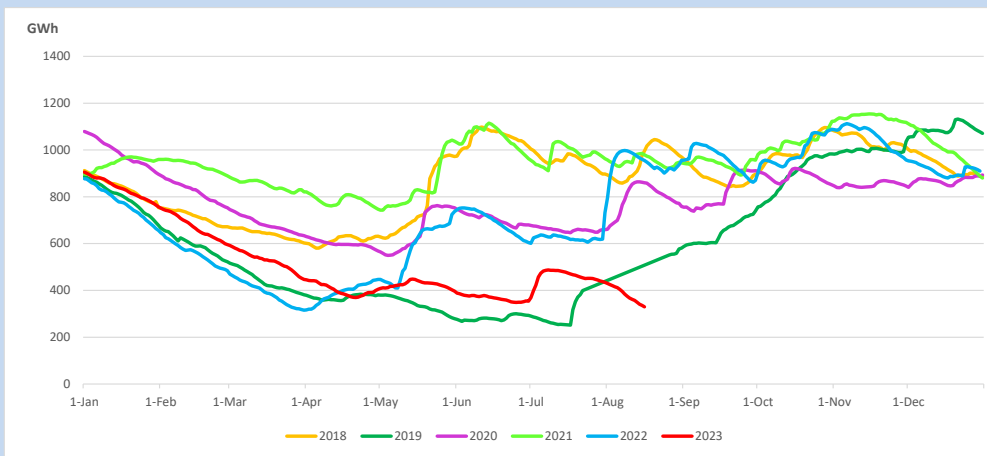
Reservoir Levels -

as at 06.00 Hr on August 18, 2023

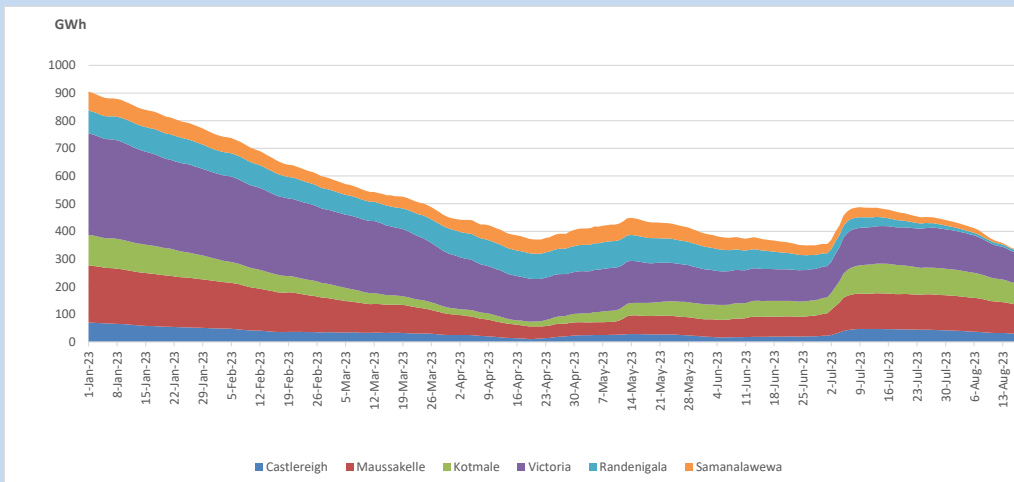


Total Reservoir Level 329.9 GWh
% of Total capacity 27.3%

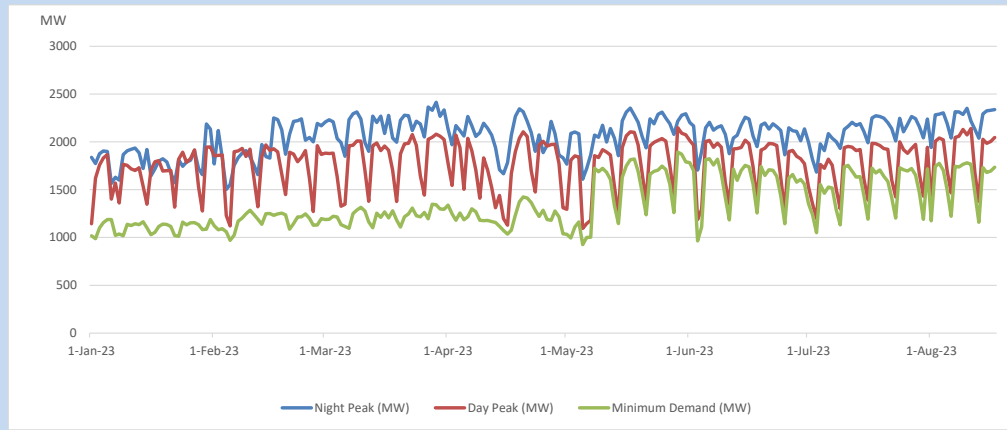
11. Comparison of Total Reservoir Storage Levels with Past Years



12. Variation of Major Hydro Reservoir Levels in the current year (GWh)



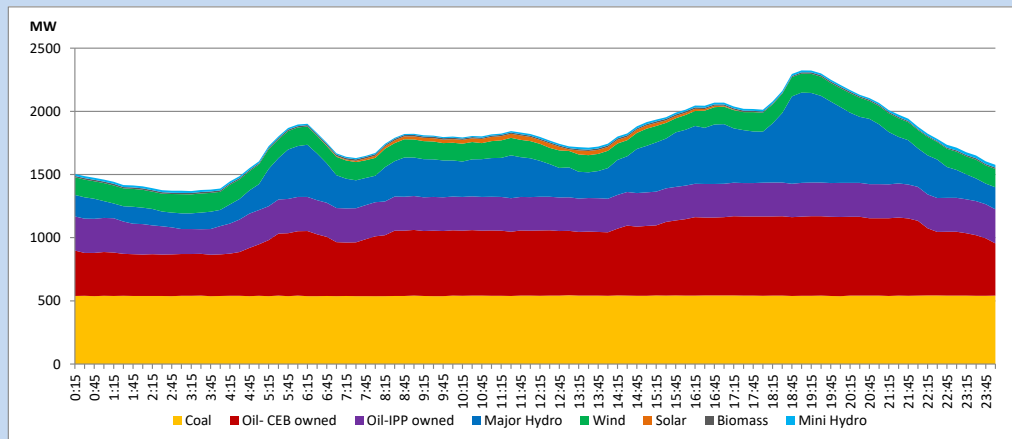
13. Variation of Demand during the current year



The above figures are excluding contribution from roof top solar, non telemetered solar and mini hydro plants

14. Daily Load Curve

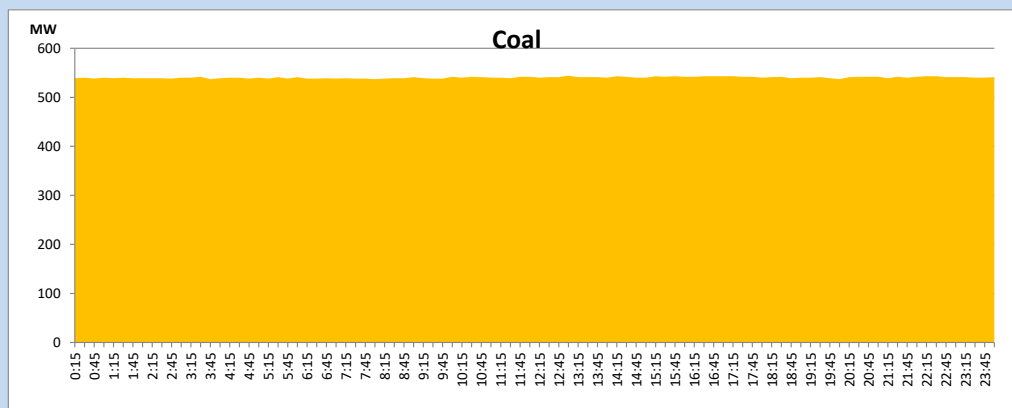
August 17, 2023



Solar and wind data is based on Telemetered Power Stations only

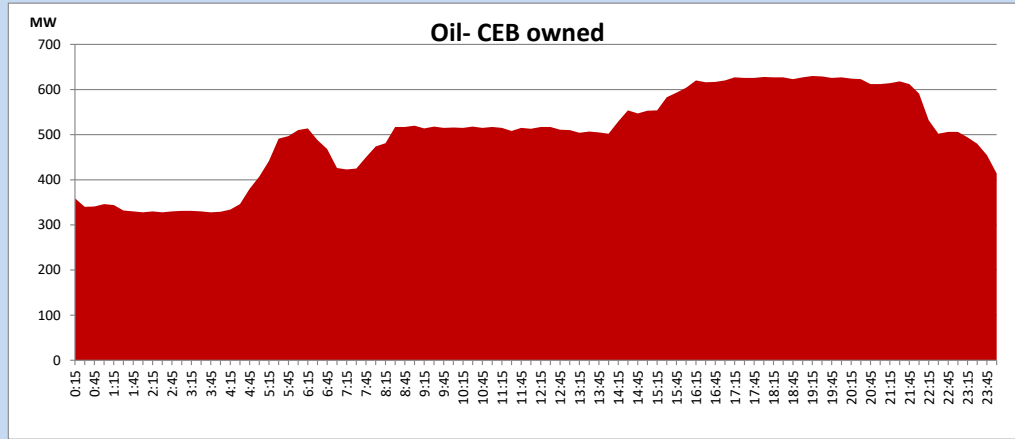
Coal Generation during

August 17, 2023



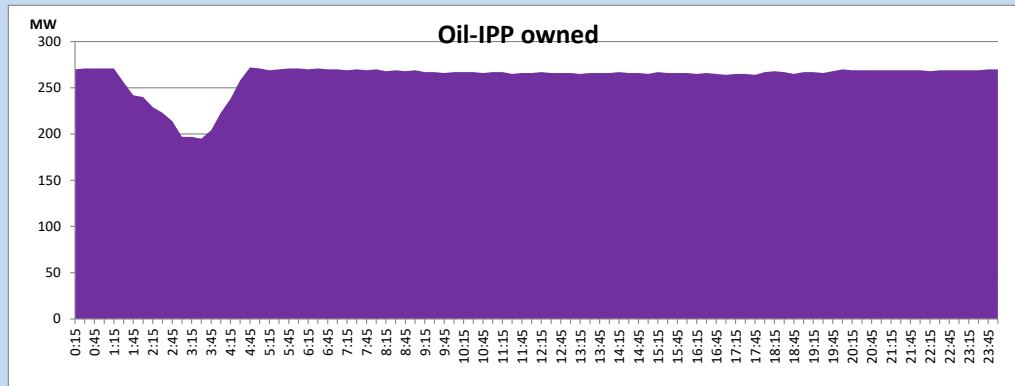
CEB Oil Plant Generation during

August 17, 2023



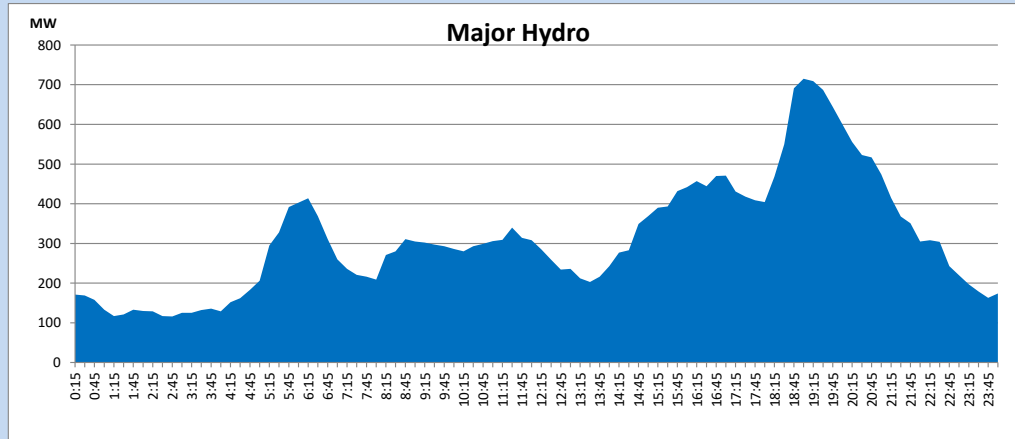
IPP Oil Plant Generation during

August 17, 2023



Major Hydro Generation during

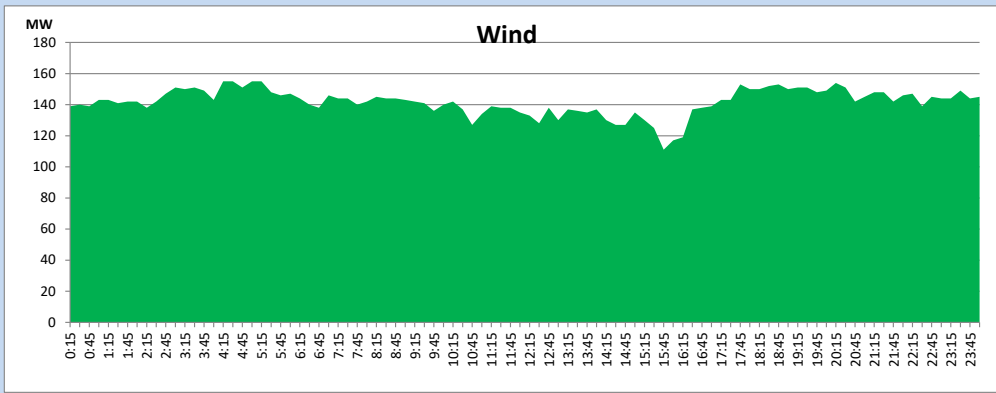
August 17, 2023



Wind Generation during

August 17, 2023

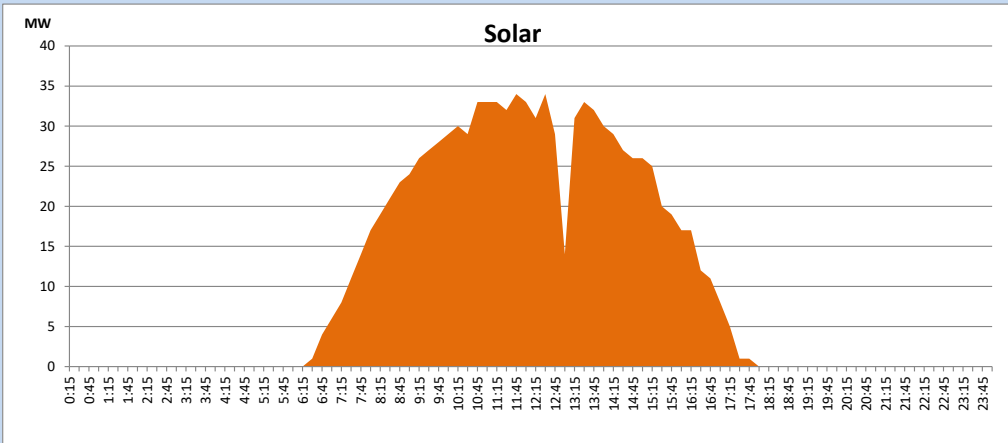
Based on Telemetered Power Stations only



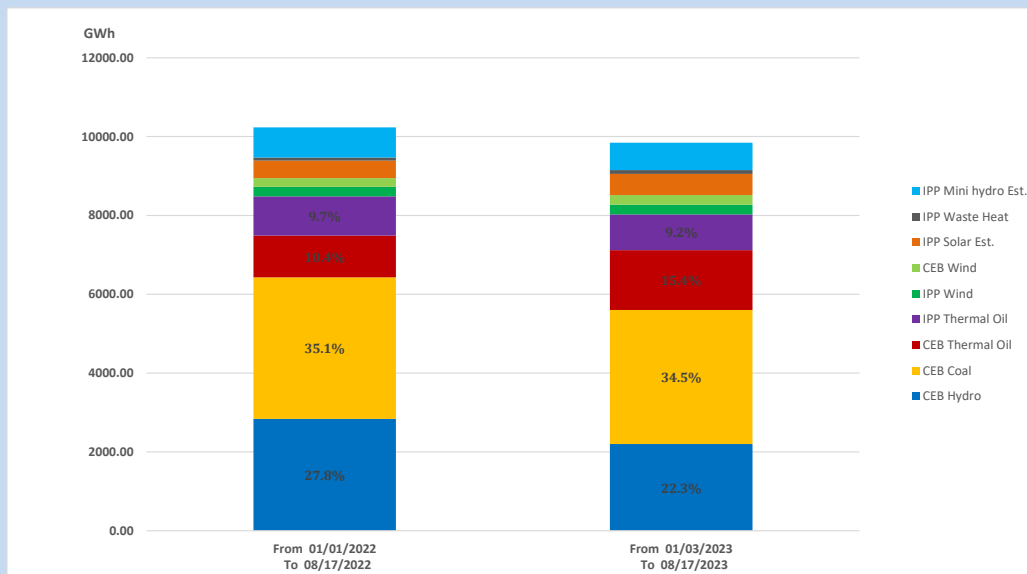
Solar Generation during

August 17, 2023

Based on Telemetered Power Stations only



15. Cumulative Dispatch Comparison with Last Year



Cumulative dispatch
 From 01/01/2022 To 08/17/2022
 From 01/03/2023 To 08/17/2023

10232 GWh
 9845 GWh

The above figures are including contribution from roof top solar, non telemetered solar and mini hydro plants (figures have been adjusted based on the data from the CEB monthly review reports.)

Thermal Plant Fuel types

Table 08

Power Station	Primary Fuel
CEB Thermal	
Sapugaskanda 1	Heavy Fuel
Sapugaskanda 2	Heavy Fuel
Kelanitissa Small Gas Turbines	Auto Diesel
GT 7 - Kelanitissa	Auto Diesel
Kelanitissa CCY	Naphtha or Diesel
Lakvijaya 1	Coal
Lakvijaya 2	Coal
Lakvijaya 3	Coal
Uthuru Janani	Heavy Fuel
Barge CEB	Heavy Fuel
KCCPS -2	Auto Diesel

Power Station	Primary Fuel
Private Thermal	
West Coast	Auto Diesel / Heavy Fuel

Major Incidents reported during the day

August 17, 2023

- 1) Samanalawewa full load generation restricted, in order to comply with the operation constraints initiated by propagation of air bubbles at reservoir intake, which would further course for the possible formation of vortex at the same place, due to the severe depletion of Samanalawewa reservoir storage.