

Generation and Reservoirs Statistics

August 14, 2023



PUBLIC UTILITIES COMMISSION OF SRI LANKA

1. Daily Generation Mix in MWh

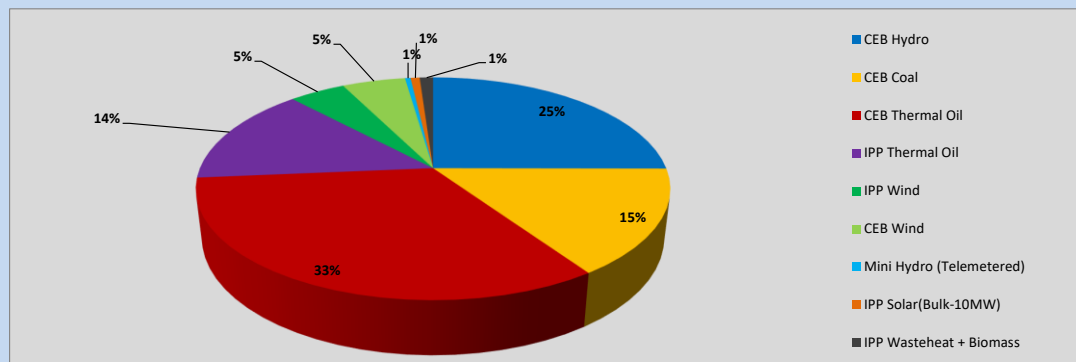


Table 01

	Generation (MWh)
CEB Hydro	10,573
CEB Coal	6,493
CEB Thermal Oil	14,000
IPP Thermal Oil	6,058
IPP Wind	1,928
CEB Wind	2,175
Mini Hydro (Telemetered)	191
IPP Solar (Bulk)	313
IPP Waste heat + Biomass	460
Total Generation (Excluding estimated figures)	42,191
* Estimated unserved energy	0
* Estimated Mini Hydro (Non telemetered)	3579
* Estimated IPP Solar PV (Bulk 1-10MW)	304
* Estimated Solar Roof Top PV	1650
Total Generation (Including estimated figures)	47,724

* Estimated figures of CEB generation report

Table 02

	Installed Capacity (MW)
CEB Hydro	1409
CEB Coal	810
CEB Thermal Oil	781
IPP Thermal Oil (West Coast)	270
IPP Wind	148
CEB Wind	100
Mini Hydro	416
IPP Waste heat + Biomass	50
IPP Solar	130
Rooftop Solar* (Ordinary)	267
Rooftop Solar* (LT Bulk)	256
Rooftop Solar* (HT Bulk)	61

Data Source - Monthly Review Report [May-2023]

2. Cumulative Dispatch

Following data excludes the contribution from roof top solar, non telemetered solar and mini hydro plants

Table 03 - Current Month

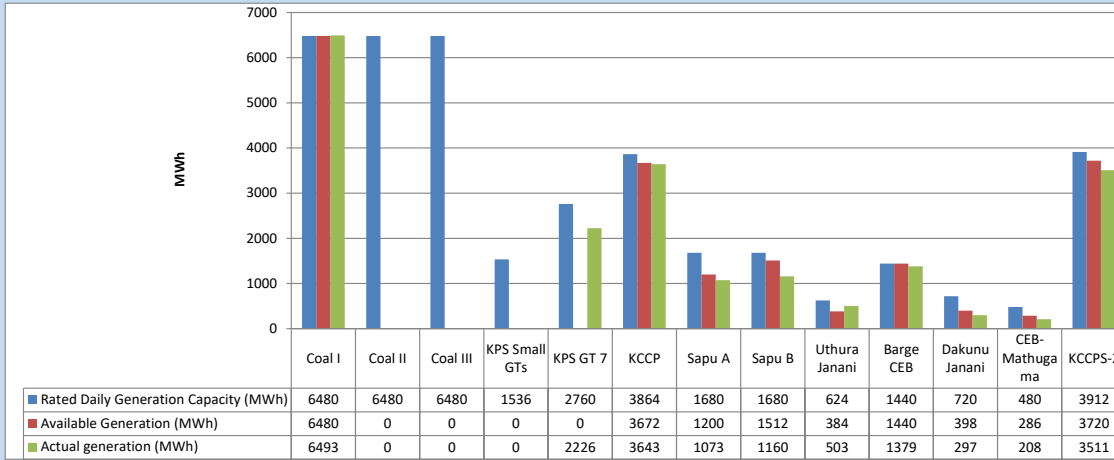
Category	Dispatch (GWh)	
CEB Hydro	133	23.04%
CEB Coal	124	21.43%
CEB Thermal Oil	180	31.14%
IPP Thermal	83	14.41%
SPP Wind	20	3.45%
CEB Wind	20	3.52%
Mini Hydro (Telemetered)	5	0.85%
IPP Solar(Bulk-10MW)	5	0.87%
IPP Waste heat + BMP	7	1.28%
Total	579	

Table 04 - Current Year

Category	Dispatch (GWh)	
CEB Hydro	2,180	24.92%
CEB Coal	3,374	38.57%
CEB Thermal Oil	1,484	16.97%
IPP Thermal	887	10.14%
SPP Wind	230	2.63%
CEB Wind	237	2.71%
Mini Hydro (Telemetered)	206	2.36%
IPP Solar(Bulk-10MW)	68	0.78%
IPP Waste heat	80	0.92%
Total	8,747	

3. CEB owned Thermal Plant Dispatch

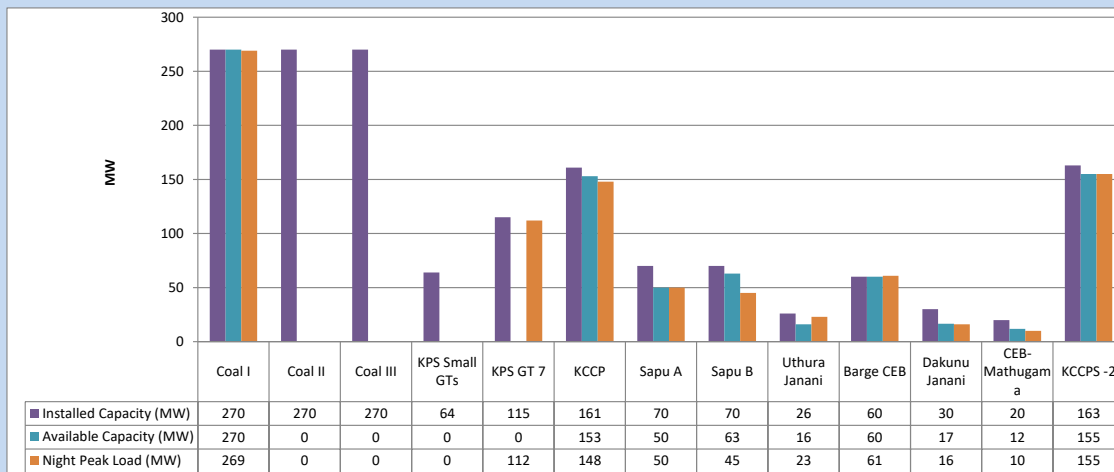
August 14, 2023



Available Generation is estimated based on plant availability at 6.00am on

August 15, 2023

4. CEB owned Thermal Plant Loading at the Night Peak

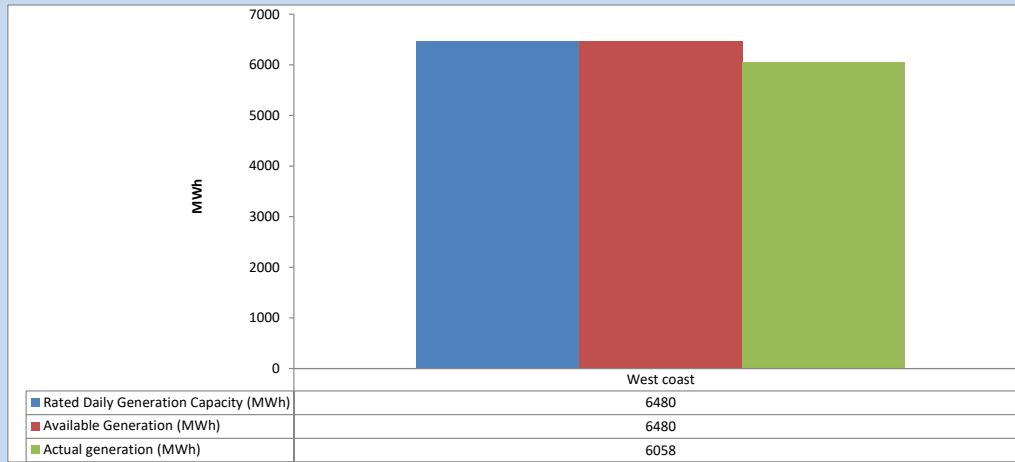


Plant availability is recorded at 6.00 am on

August 15, 2023

5. IPP owned Thermal Plant Dispatch

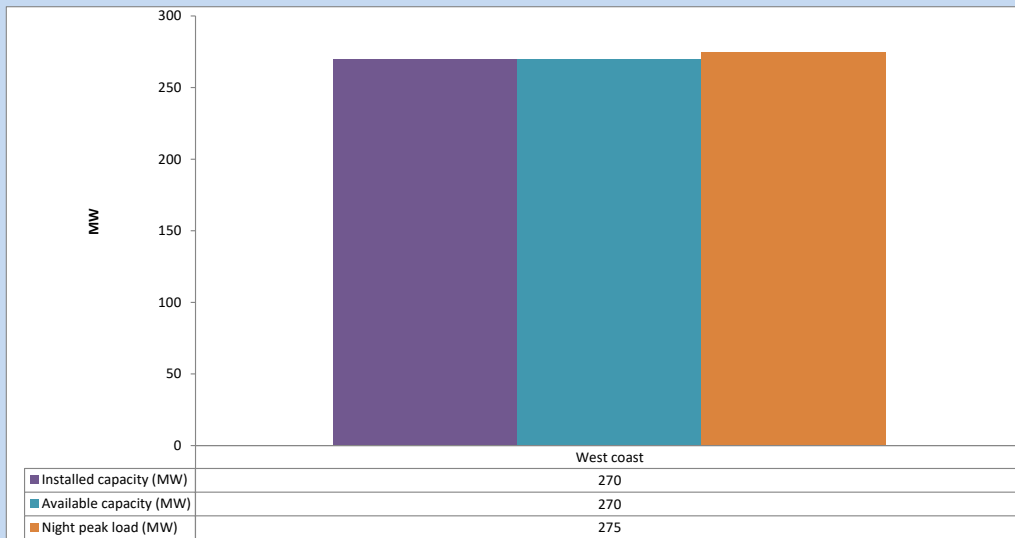
August 14, 2023



Available Generation is estimated based on plant availability at 6.00am on

August 15, 2023

6. IPP owned Thermal Plant Loading at the Night Peak

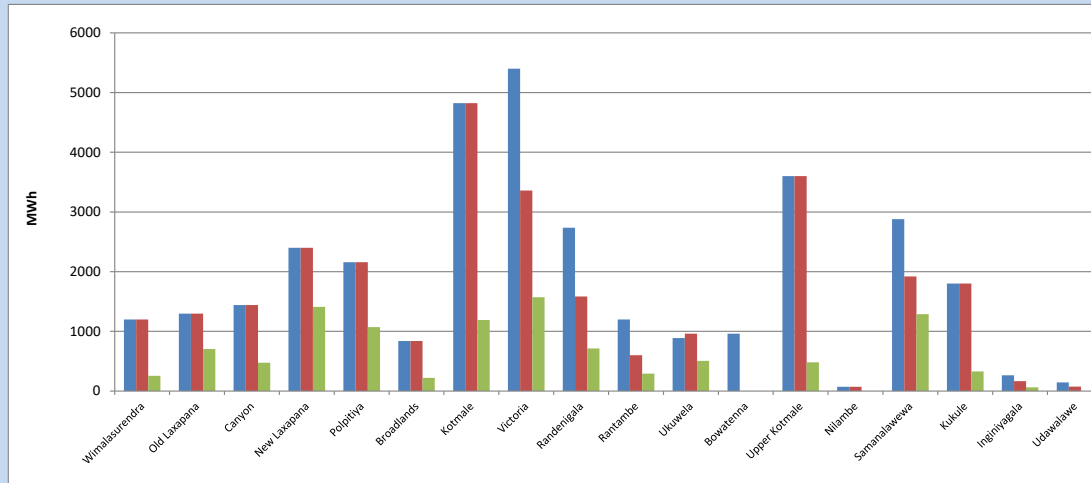


Plant availability is recorded at 6.00 am on

August 15, 2023

7. Major Hydro Plant Dispatch

August 14, 2023

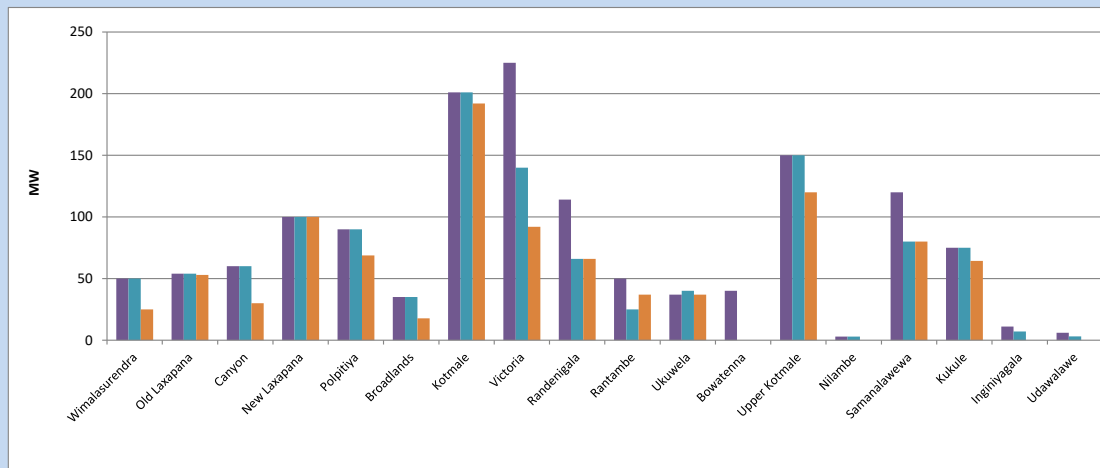


Available Generation is estimated based on plant availability at 6.00am on August 15, 2023
 Broadlands power plant is operating in the Commissioning Stage

August 15, 2023

8. Major Hydro Plant Loading at Night Peak

August 14, 2023



Plant availability is recorded at 6.00 am on August 15, 2023
 Broadlands power plant is operating in the Commissioning Stage

August 15, 2023

9. Summary of Major Plant performance

Table 05

Plant	Installed Capacity (MW)	Plant Availability (MW)	Night peak Load (MW)	Plant Dispatch (MWh)
Wimalasurendra	50	50	25	255
Old Laxapana Canyon	54	54	53	705
New Laxapana	60	60	30	474
Polpitiya	100	100	100	1,410
Broadlands	90	90	69	1,071
Kotmale	35	35	18	221
Kotmale	201	201	192	1,190
Victoria	225	140	92	1,573
Randenigala	114	66	66	714
Rantambe	50	25	37	292
Ukuwela	37	40	37	507
Bowatenna	40	0	0	0
Upper Kotmale	150	150	120	482
Nilambe	3	3	0	0
Samanalawewa	120	80	80	1,288
Kukule	75	75	64	328
Inginiyagala	11	7	0	63
Udawalawe	6	3	0	0
Puttalam Coal I	270	270	269	6,493
Puttalam Coal II	270	0	0	0
Puttalam Coal III	270	0	0	0
KPS Small GTs	64	0	0	0
KPS GT 7	115	0	112	2,226
KCCP	161	153	148	3,643
Sapugaskanda A	70	50	50	1,073
Sapugaskanda B	70	63	45	1,160
Uthura Janani	26	16	23	503
Barge CEB	60	60	61	1,379
CEB-Hambantota	30	17	16	297
CEB-Mathugama	20	12	10	208
ACE Matara	24	0	0	0
Asia Power	50	0	0	0
KCCPS -2	163	155	155	3,511
West Coast	270	270	275	6,058
Nothern Power	36	0	0	0
ACE Embilipitiya	93	0	0	0
Total	3,483	2,245	2,313	42,191

Plant availability is the availability recorded at 6 am on

August 15, 2023

10. Contribution to the Night Peak in MW

August 14, 2023

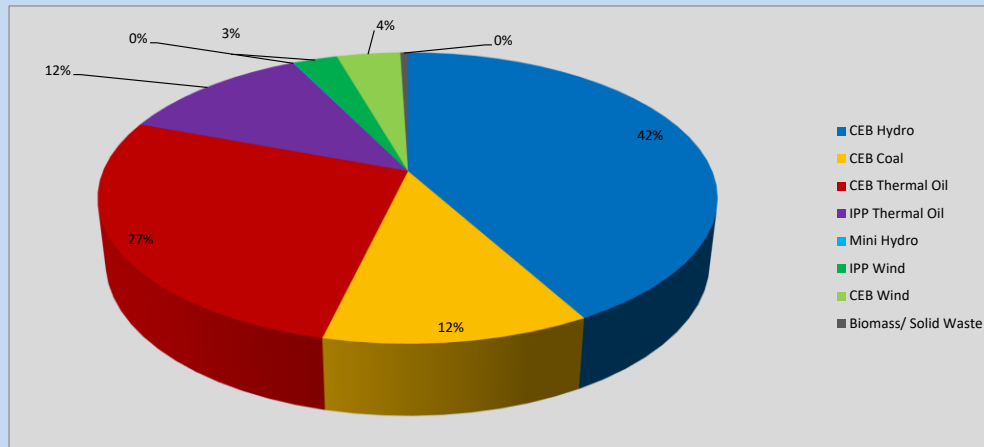


Table 06

CEB Hydro	962	MW
CEB Coal	269	MW
CEB Thermal Oil	620	MW
IPP Thermal Oil	275	MW
Mini Hydro (Telemetered)	2	MW
IPP Wind	62.9	MW
CEB Wind	90.9	MW
Biomass/ Solid Waste	11	MW

Recorded Peak Demand Data

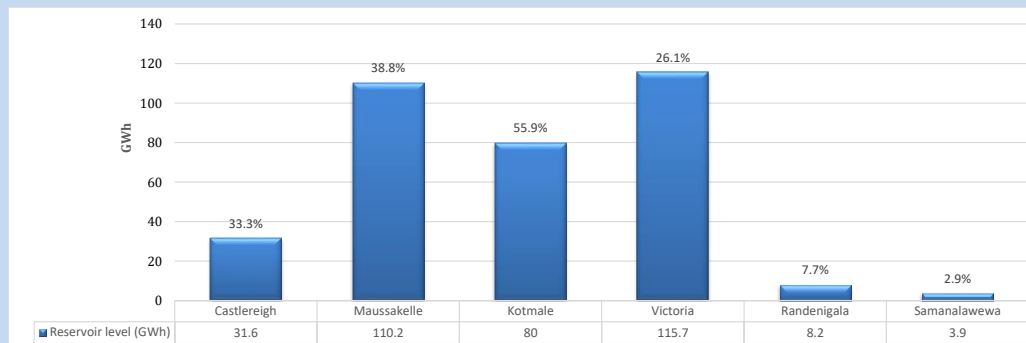
Table 07

Night Peak*	2,292	MW
Day Peak Maximum Demand	2,027	MW
Day Peak Minimum Demand	1,731	MW
Off Peak Minimum Demand	1,230	MW

Above figures are excluding contribution from roof top solar, non telemetered solar and mini hydro plants

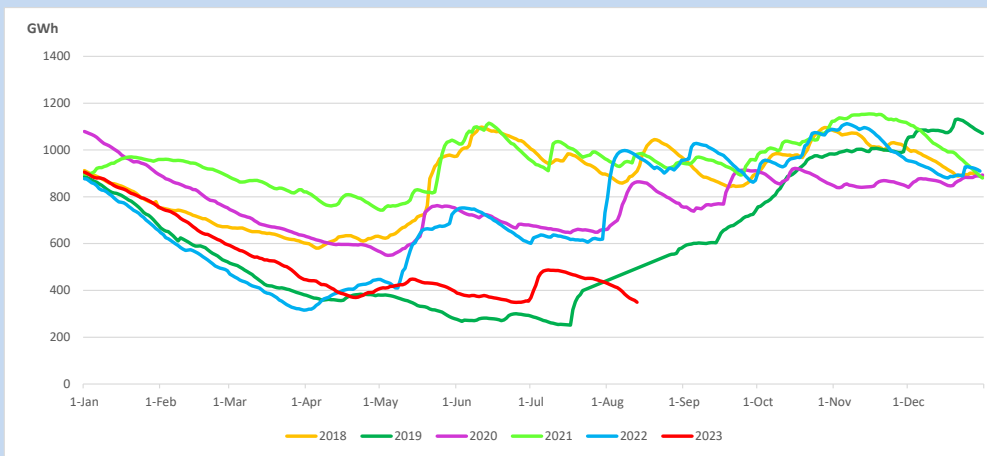
Reservoir Levels -

as at 06.00 Hr on August 15, 2023

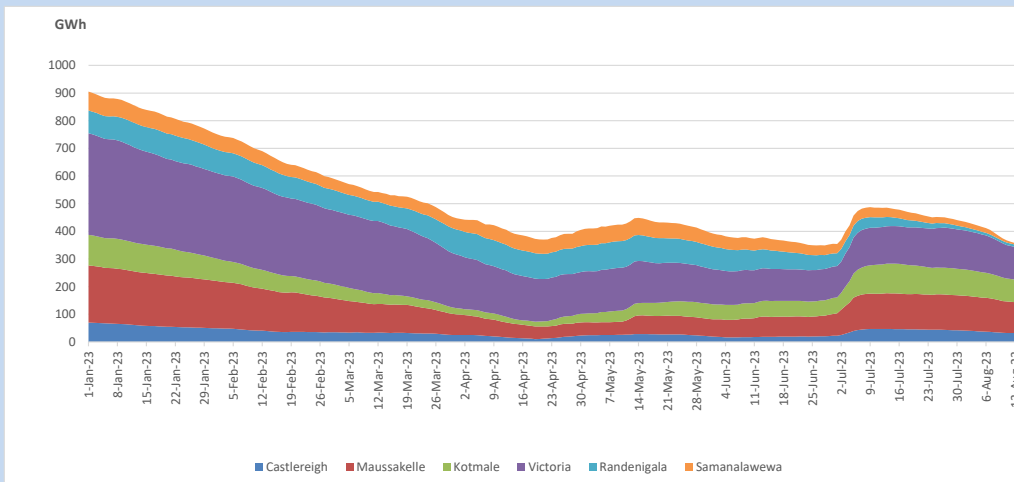


Total Reservoir Level 349.6 GWh
 % of Total capacity 29.0%

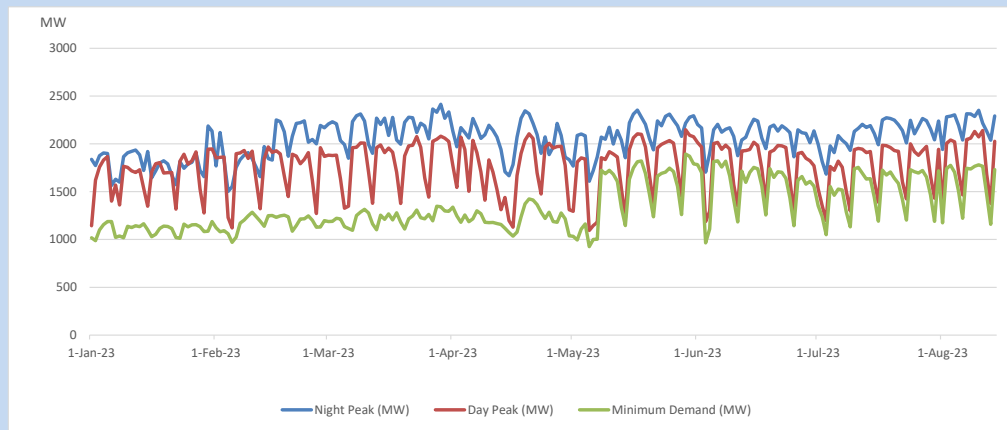
11. Comparison of Total Reservoir Storage Levels with Past Years



12. Variation of Major Hydro Reservoir Levels in the current year (GWh)



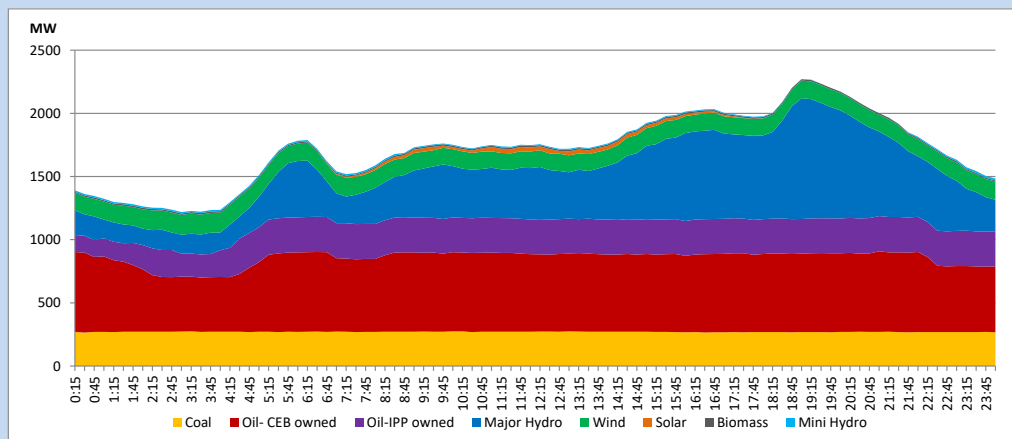
13. Variation of Demand during the current year



The above figures are excluding contribution from roof top solar, non telemetered solar and mini hydro plants

14. Daily Load Curve

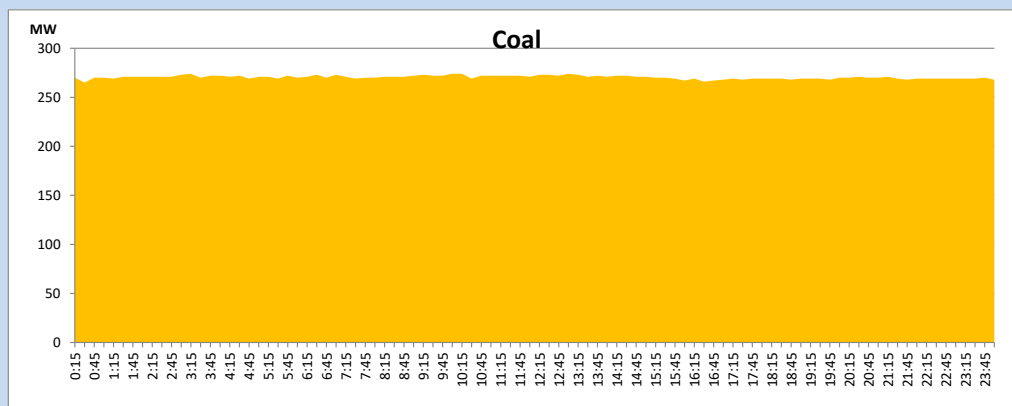
August 14, 2023



Solar and wind data is based on Telemetered Power Stations only

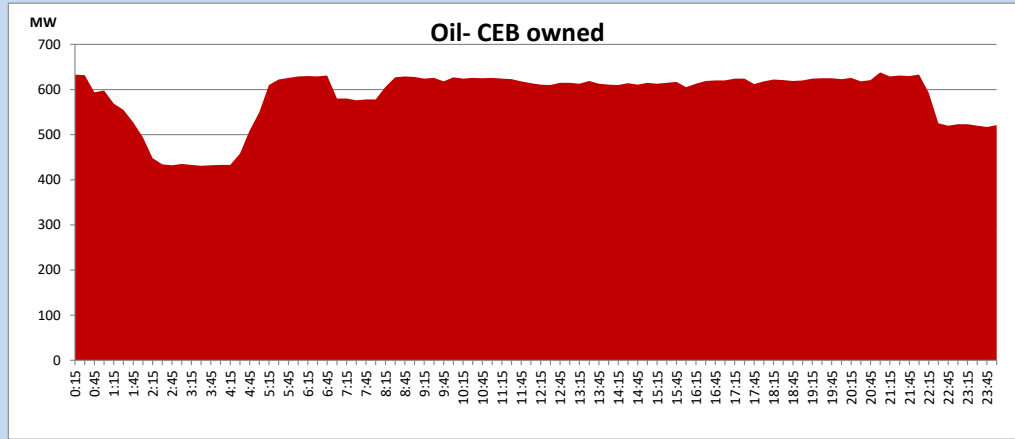
Coal Generation during

August 14, 2023



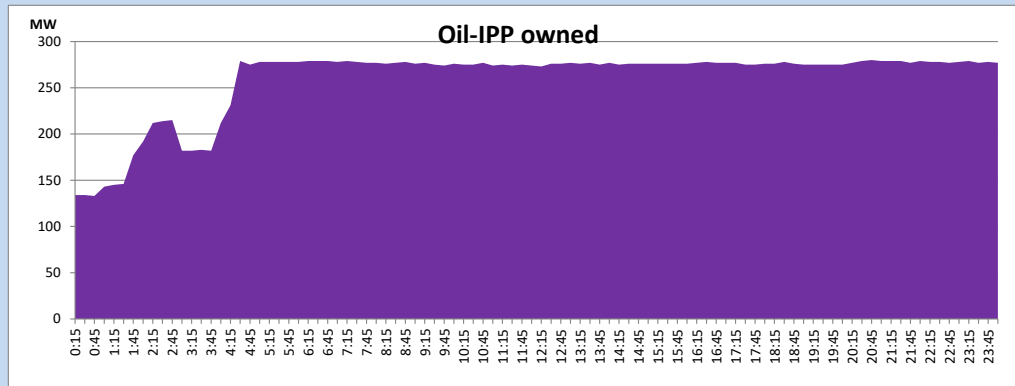
CEB Oil Plant Generation during

August 14, 2023



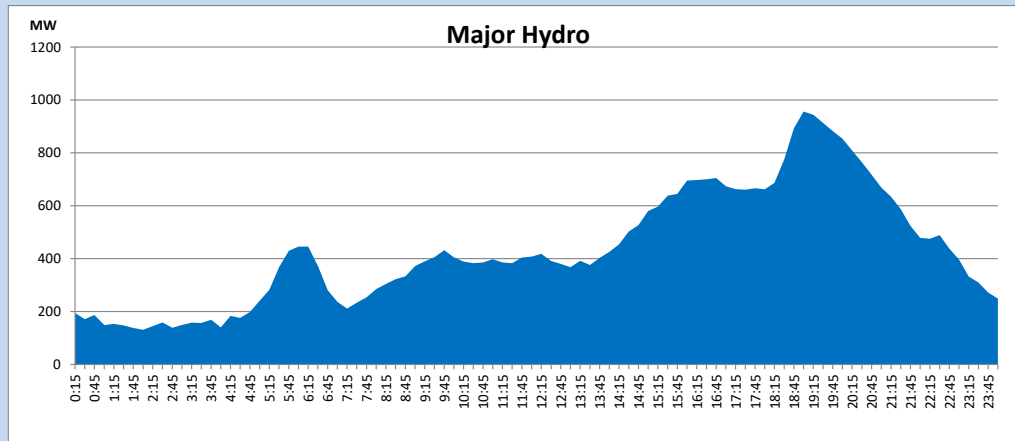
IPP Oil Plant Generation during

August 14, 2023



Major Hydro Generation during

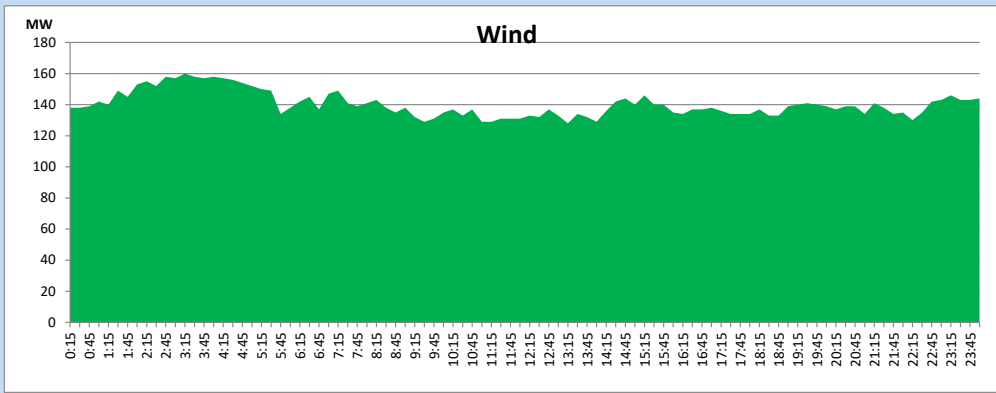
August 14, 2023



Wind Generation during

August 14, 2023

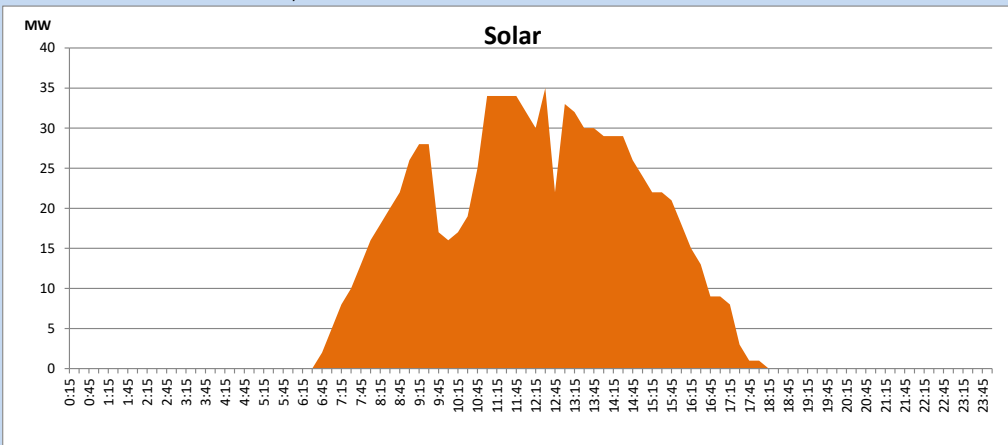
Based on Telemetered Power Stations only



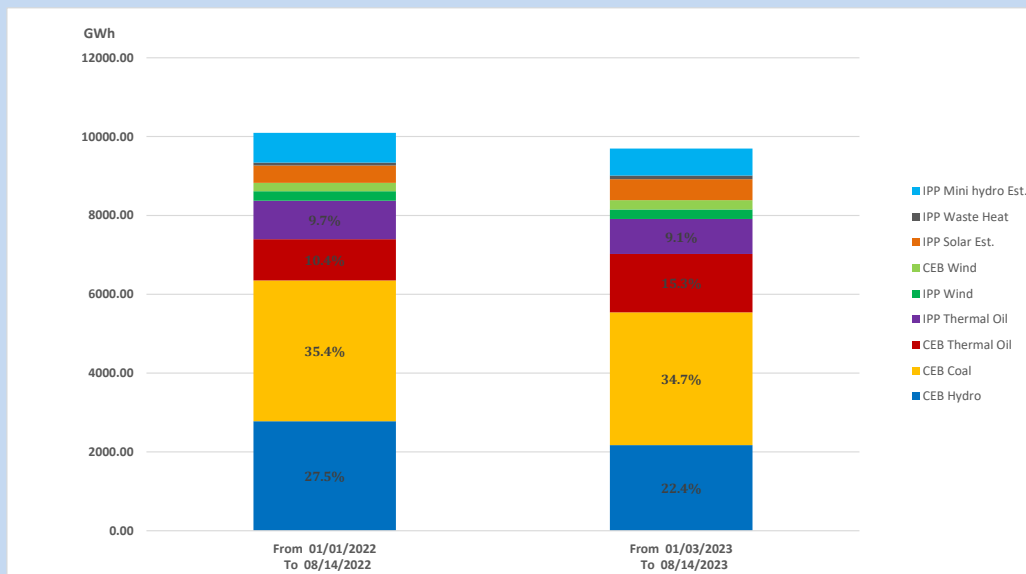
Solar Generation during

August 14, 2023

Based on Telemetered Power Stations only



15. Cumulative Dispatch Comparison with Last Year



Cumulative dispatch
 From 01/01/2022 To 08/14/2022
 From 01/01/2023 To 08/14/2023

10095 GWh
 9698 GWh

The above figures are including contribution from roof top solar, non telemetered solar and mini hydro plants (Adjusted as per the CEB monly review reports)

Thermal Plant Fuel types

Table 08

Power Station	Primary Fuel
CEB Thermal	
Sapugaskanda 1	Heavy Fuel
Sapugaskanda 2	Heavy Fuel
Kelanitissa Small Gas Turbines	Auto Diesel
GT 7 - Kelanitissa	Auto Diesel
Kelanitissa CCY	Naphtha or Diesel
Lakvijaya 1	Coal
Lakvijaya 2	Coal
Lakvijaya 3	Coal
Uthuru Janani	Heavy Fuel
Barge CEB	Heavy Fuel
KCCPS -2	Auto Diesel

Power Station	Primary Fuel
Private Thermal	
West Coast	Auto Diesel / Heavy Fuel

Major Incidents reported during the day

August 14, 2023

Major Incidents

- 1) Samanalawewa full load generation restricted, in order to comply with the operation constraints initiated by propagation of air bubbles at reservoir intake, which would further course for the possible formation of vortex at the same place, due to the severe depletion of Samanalawewa reservoir storage.
- 2) KPS GT7 performed a forced shutdown at 22:31hrs due to a malfunction of fuel nozzles. KPS GT7 is yet to resume generation.