

# Generation and Reservoirs Statistics

August 11, 2023



PUBLIC UTILITIES COMMISSION OF SRI LANKA

## 1. Daily Generation Mix in MWh

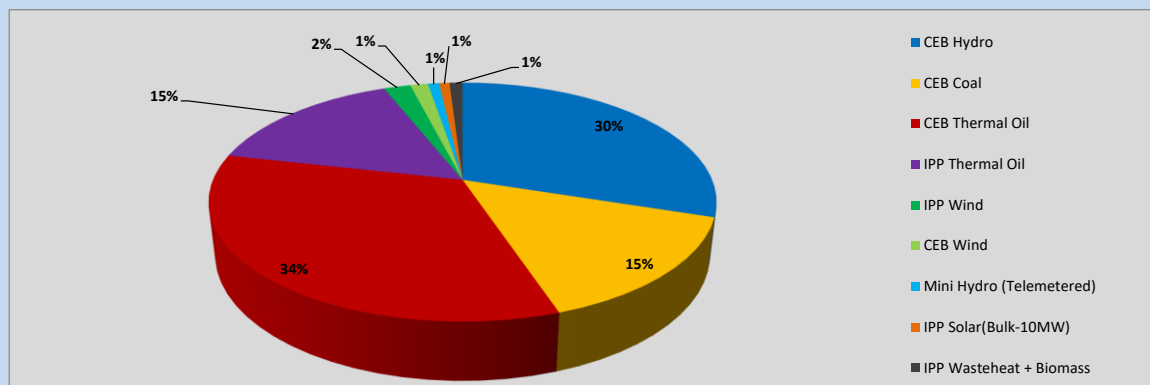


Table 01

CEB Hydro	13,056	MWh
CEB Coal	6,482	MWh
CEB Thermal Oil	14,671	MWh
IPP Thermal Oil	6,744	MWh
IPP Wind	888	MWh
CEB Wind	590	MWh
Mini Hydro (Telemetered)	371	MWh
IPP Solar (Bulk)	342	MWh
IPP Waste heat + Biomass	434	MWh
<b>Total Generation (Excluding estimated figures)</b>	<b>43,578</b>	<b>MWh</b>
* Estimated unserved energy	0	MWh
* Estimated Mini Hydro (Non telemetered)	3399	MWh
* Estimated IPP Solar PV (Bulk 1-10MW)	304	MWh
* Estimated Solar Roof Top PV	1650	MWh
<b>Total Generation (Including estimated figures)</b>	<b>48,931</b>	<b>MWh</b>

\* Estimated figures of CEB generation report

## 2. Cumulative Dispatch

Following data excludes the contribution from roof top solar, non telemetered solar and mini hydro plants

Table 02 - Current Month

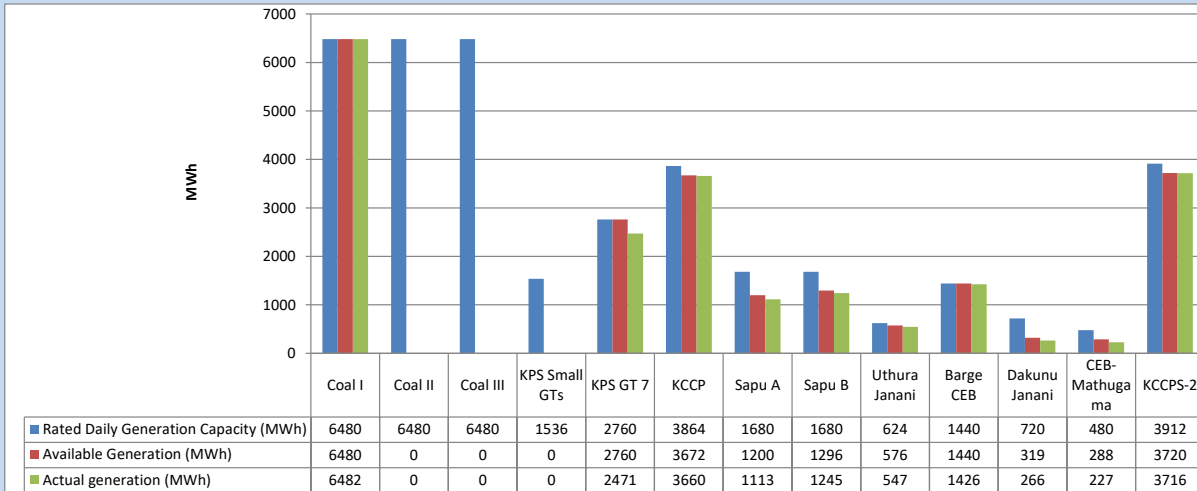
Category	Dispatch (GWh)	
CEB Hydro	107	23.12%
CEB Coal	105	22.65%
CEB Thermal Oil	138	29.91%
IPP Thermal	67	14.62%
SPP Wind	15	3.31%
CEB Wind	16	3.37%
Mini Hydro (Telemetered)	4	0.86%
IPP Solar (Bulk-10MW)	4	0.87%
IPP Waste heat + BMP	6	1.30%
<b>Total</b>	<b>462</b>	

Table 03 - Current Year

Category	Dispatch (GWh)	
CEB Hydro	2,154	24.95%
CEB Coal	3,354	38.87%
CEB Thermal Oil	1,442	16.71%
IPP Thermal	871	10.10%
SPP Wind	225	2.61%
CEB Wind	232	2.69%
Mini Hydro (Telemetered)	205	2.38%
IPP Solar (Bulk-10MW)	67	0.78%
IPP Waste heat	79	0.91%
<b>Total</b>	<b>8,630</b>	

### 3. CEB owned Thermal Plant Dispatch

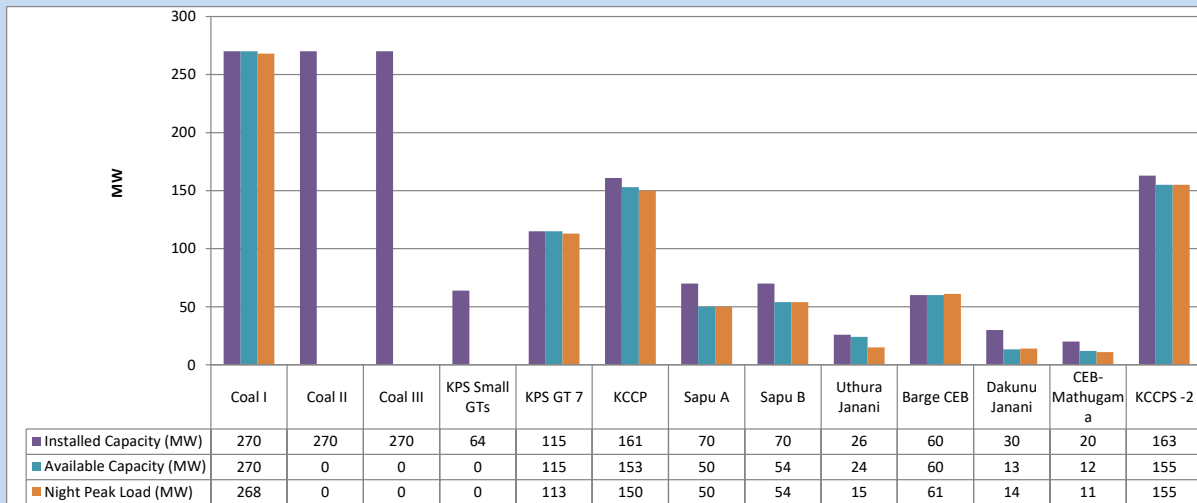
August 11, 2023



Available Generation is estimated based on plant availability at 6.00am on

August 12, 2023

### 4. CEB owned Thermal Plant Loading at the Night Peak

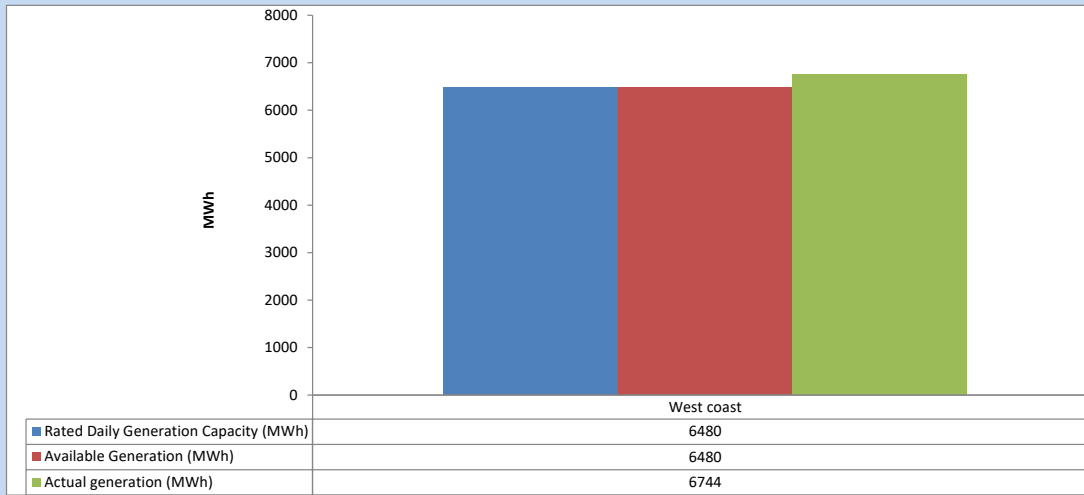


Plant availability is recorded at 6.00 am on

August 12, 2023

## 5. IPP owned Thermal Plant Dispatch

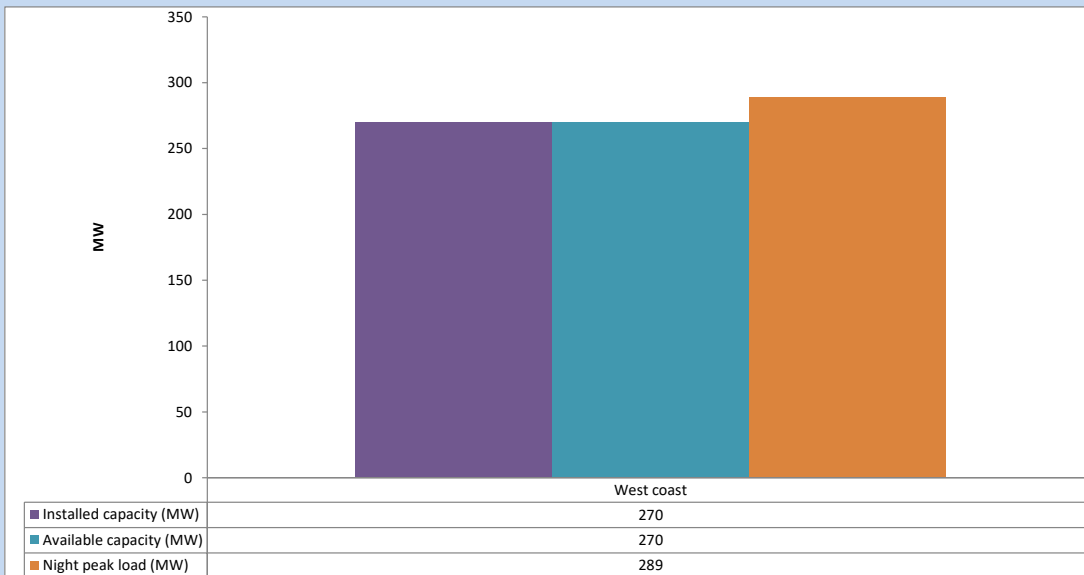
August 11, 2023



Available Generation is estimated based on plant availability at 6.00am on

August 12, 2023

## 6. IPP owned Thermal Plant Loading at the Night Peak

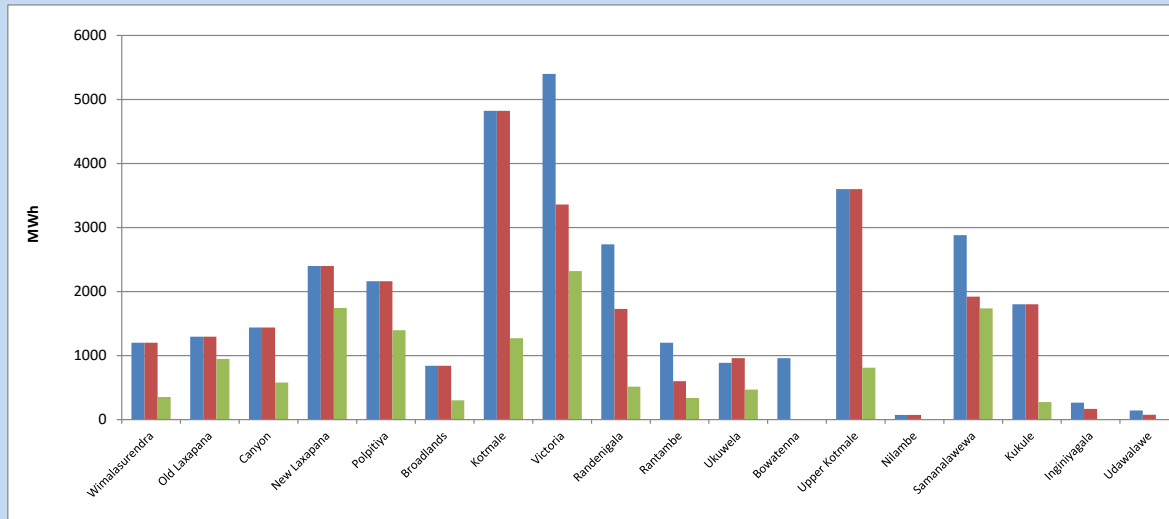


Plant availability is recorded at 6.00 am on

August 12, 2023

### 7. Major Hydro Plant Dispatch

August 11, 2023

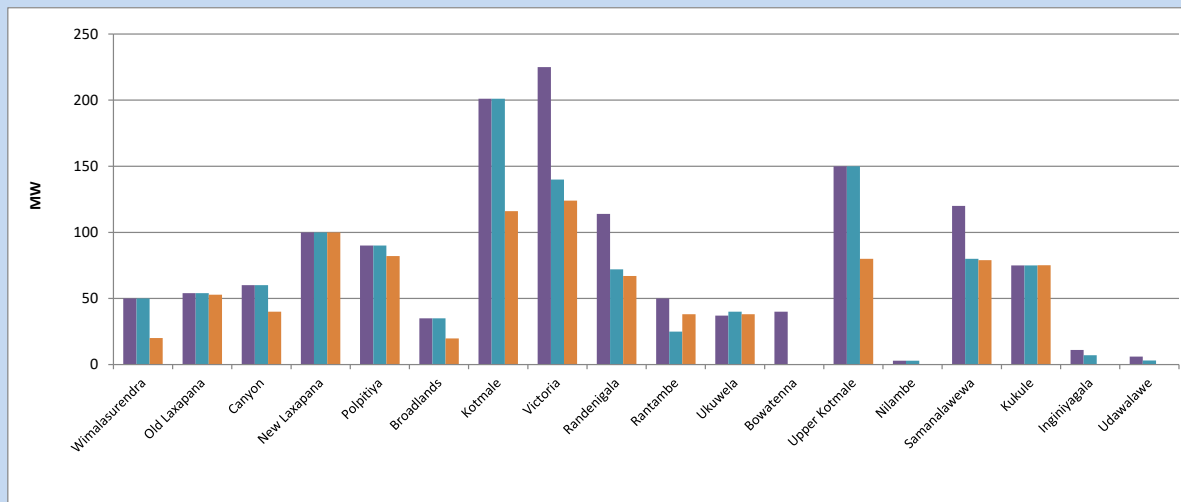


Available Generation is estimated based on plant availability at 6.00am on August 12, 2023  
 Broadlands power plant is operating in the Commissioning Stage

August 12, 2023

### 8. Major Hydro Plant Loading at Night Peak

August 11, 2023



Plant availability is recorded at 6.00 am on August 12, 2023  
 Broadlands power plant is operating in the Commissioning Stage

August 12, 2023

## 9. Summary of Major Plant performance

**Table 04**

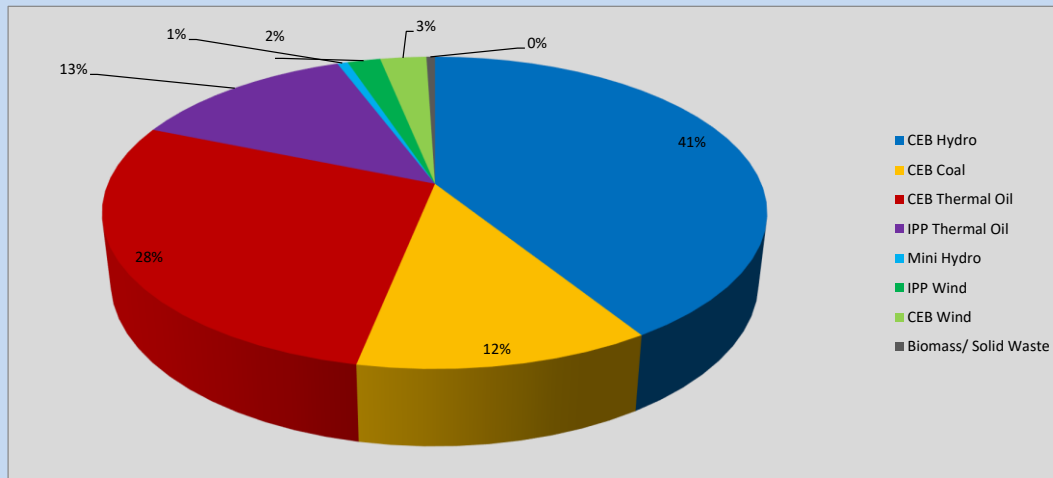
Plant	Installed Capacity	Plant Availability	Night peak Load	Plant Dispatch
	(MW)	(MW)	(MW)	(MWh)
Wimalasurendra	50	50	20	353
Old Laxapana	54	54	53	947
Canyon	60	60	40	578
New Laxapana	100	100	100	1,744
Polpitiya	90	90	82	1,397
Broadlands	35	35	20	302
Kotmale	201	201	116	1,270
Victoria	225	140	124	2,319
Randenigala	114	72	67	516
Rantambe	50	25	38	337
Ukuwela	37	40	38	470
Bowatenna	40	0	0	0
Upper Kotmale	150	150	80	811
Nilambe	3	3	0	0
Samanalawewa	120	80	79	1,737
Kukule	75	75	75	275
Inginiyagala	11	7	0	0
Udawalawe	6	3	0	0
Puttalam Coal I	270	270	268	6,482
Puttalam Coal II	270	0	0	0
Puttalam Coal III	270	0	0	0
KPS Small GTs	64	0	0	0
KPS GT 7	115	115	113	2,471
KCCP	161	153	150	3,660
Sapugaskanda A	70	50	50	1,113
Sapugaskanda B	70	54	54	1,245
Uthura Janani	26	24	15	547
Barge CEB	60	60	61	1,426
CEB-Hambantota	30	13	14	266
CEB-Mathugama	20	12	11	227
ACE Matara	24	0	0	0
Asia Power	50	0	0	0
KCCPS -2	163	155	155	3,716
West Coast	270	270	289	6,744
Nothern Power	36	0	0	0
ACE Embilipitiya	93	0	0	0
<b>Total</b>	<b>3,483</b>	<b>2,361</b>	<b>2,238</b>	<b>43,578</b>

Plant availability is the availability recorded at 6 am on

August 12, 2023

## 10. Contribution to the Night Peak in MW

August 11, 2023



**Table 05**

CEB Hydro	910	MW
CEB Coal	268	MW
CEB Thermal Oil	623	MW
IPP Thermal Oil	289	MW
Mini Hydro (Telemetered)	13	MW
IPP Wind	42.5	MW
CEB Wind	59.4	MW
Biomass/ Solid Waste	11	MW

### Recorded Peak Demand Data

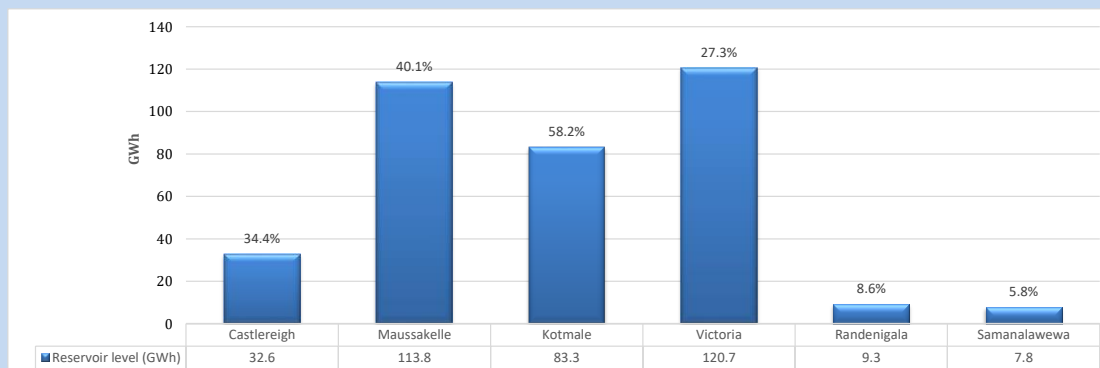
**Table 06**

Night Peak*	2,216	MW
Day Peak Maximum Demand	2,140	MW
Day Peak Minimum Demand	1,766	MW
Off Peak Minimum Demand	1,391	MW

Above figures are excluding contribution from roof top solar, non telemetered solar and mini hydro plants

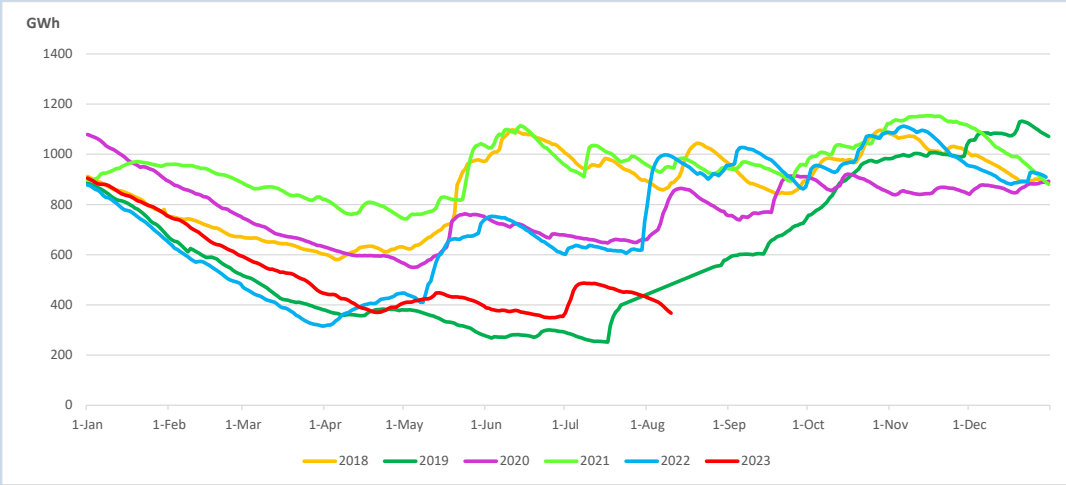
### Reservoir Levels -

as at 06.00 Hr on August 12, 2023

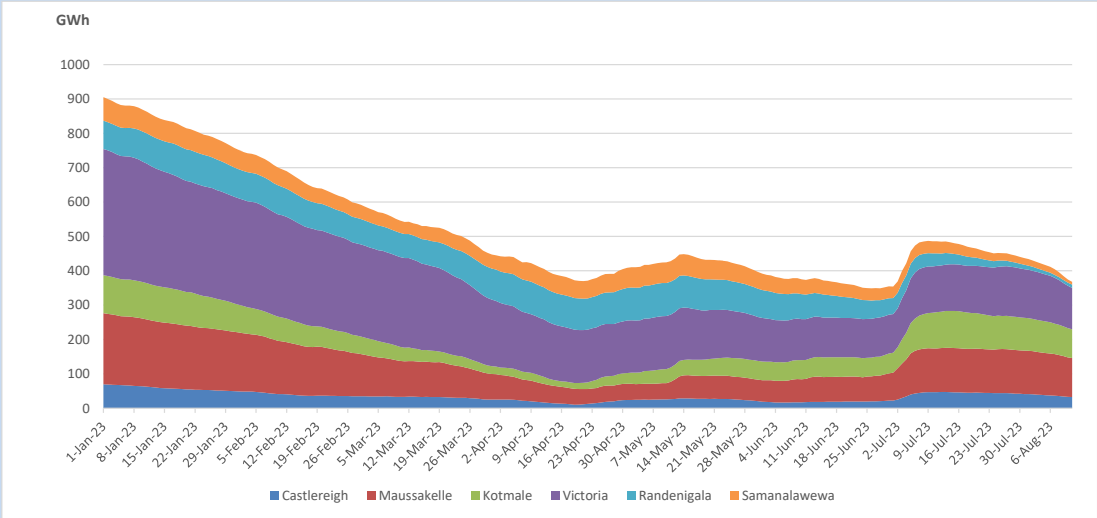


Total Reservoir Level 367.5 GWh  
% of Total capacity 30.5%

### 11. Comparison of Total Reservoir Storage Levels with Past Years

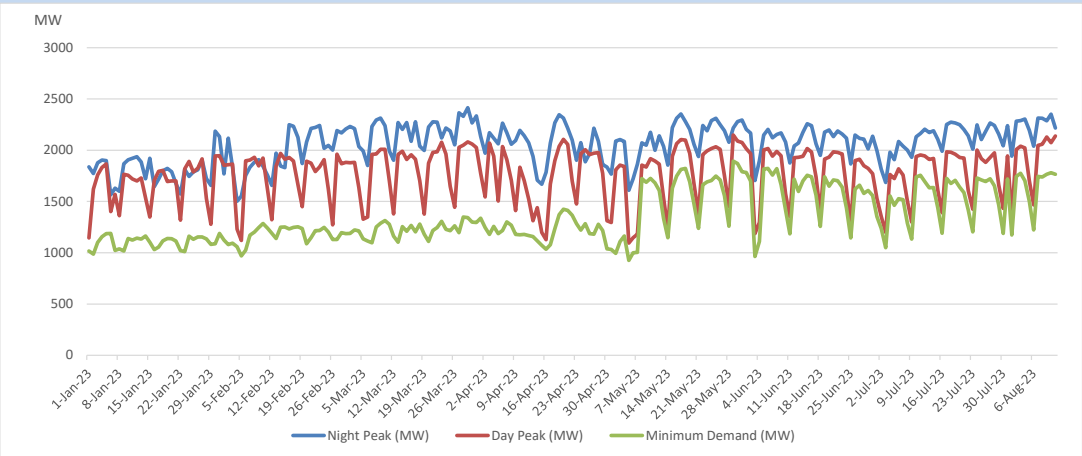


### 12. Variation of Major Hydro Reservoir Levels in the current year (GWh)





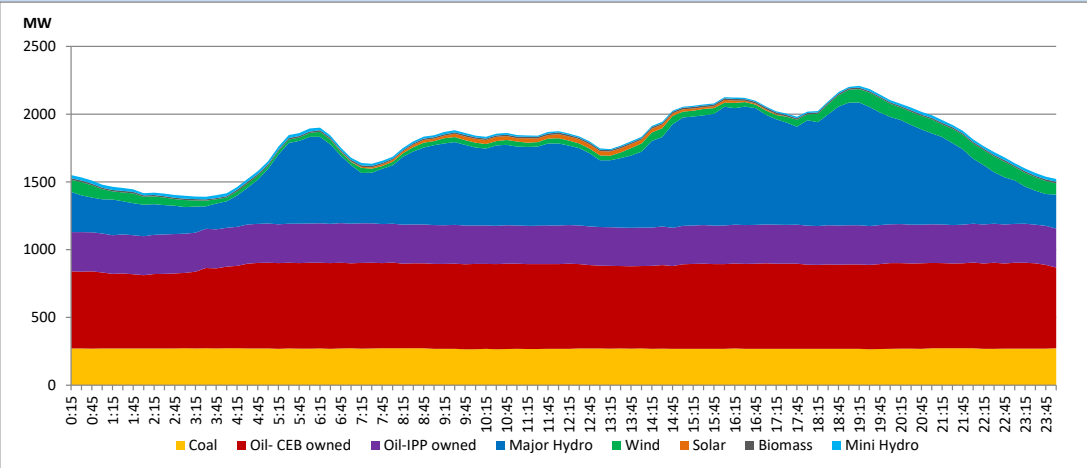
### 13. Variation of Demand during the current year



The above figures are excluding contribution from roof top solar, non telemetered solar and mini hydro plants

### 14. Daily Load Curve

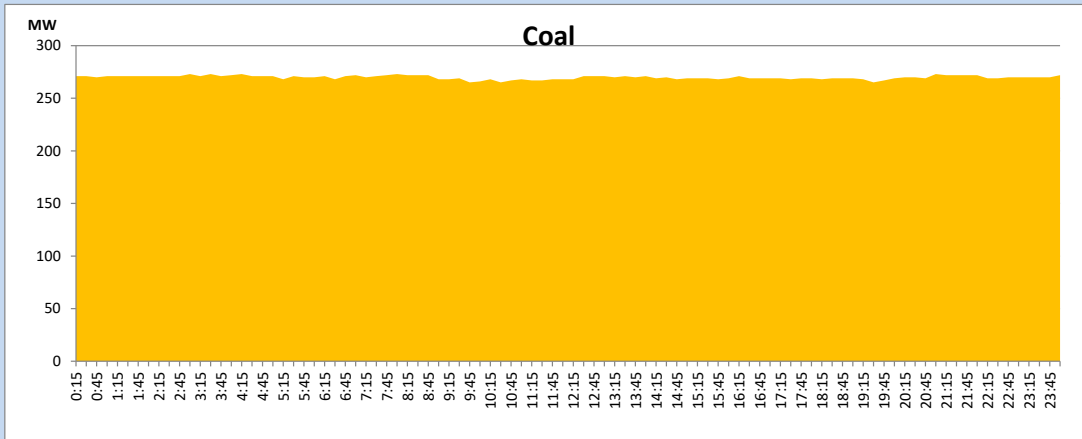
August 11, 2023



Solar and wind data is based on Telemetered Power Stations only

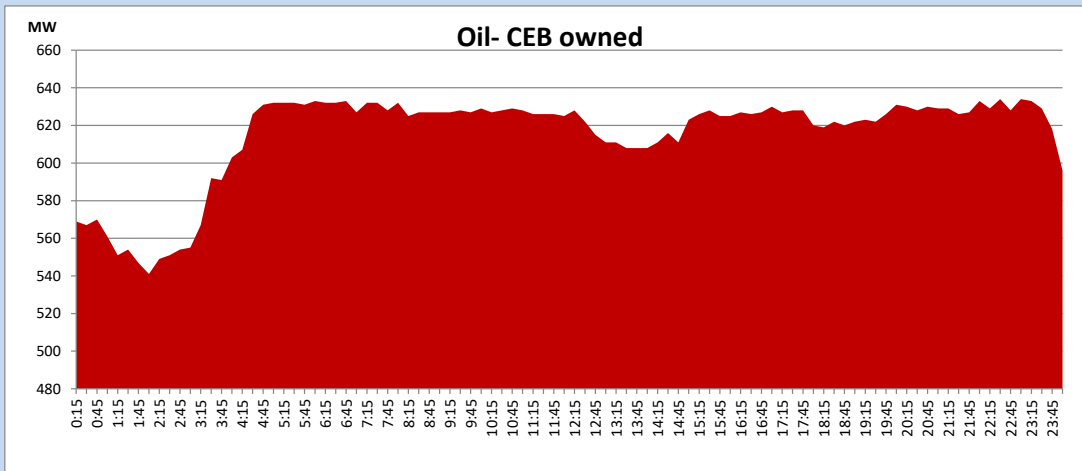
Coal Generation during

August 11, 2023



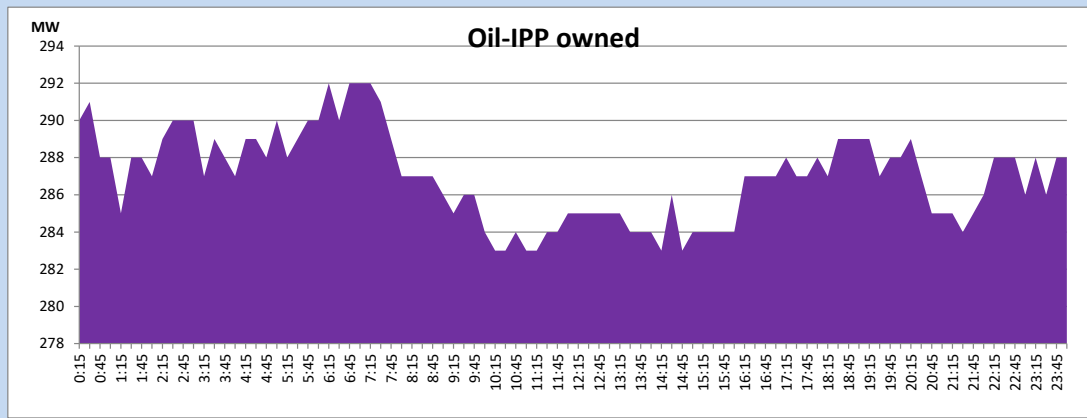
CEB Oil Plant Generation during

August 11, 2023



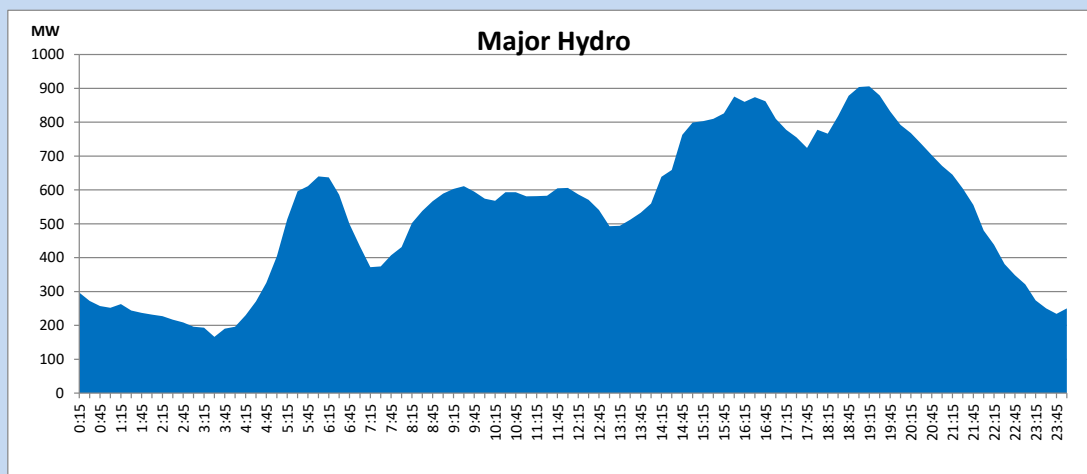
IPP Oil Plant Generation during

August 11, 2023



Major Hydro Generation during

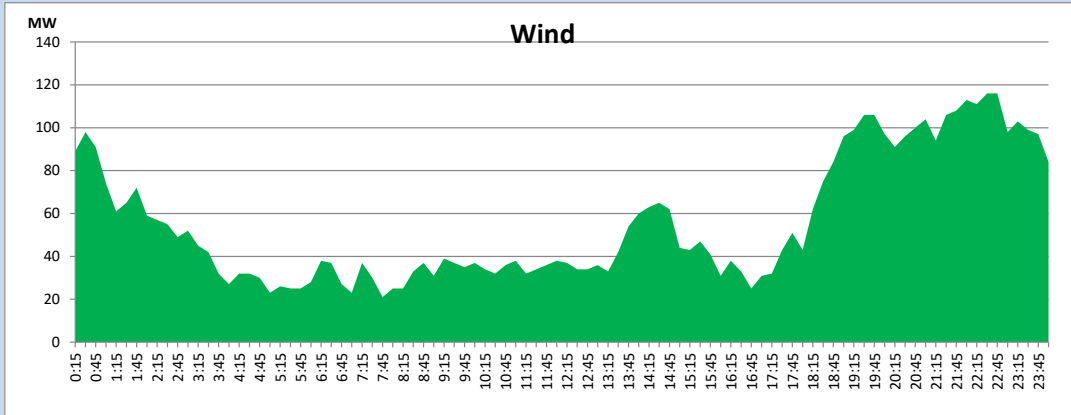
August 11, 2023



## Wind Generation during

August 11, 2023

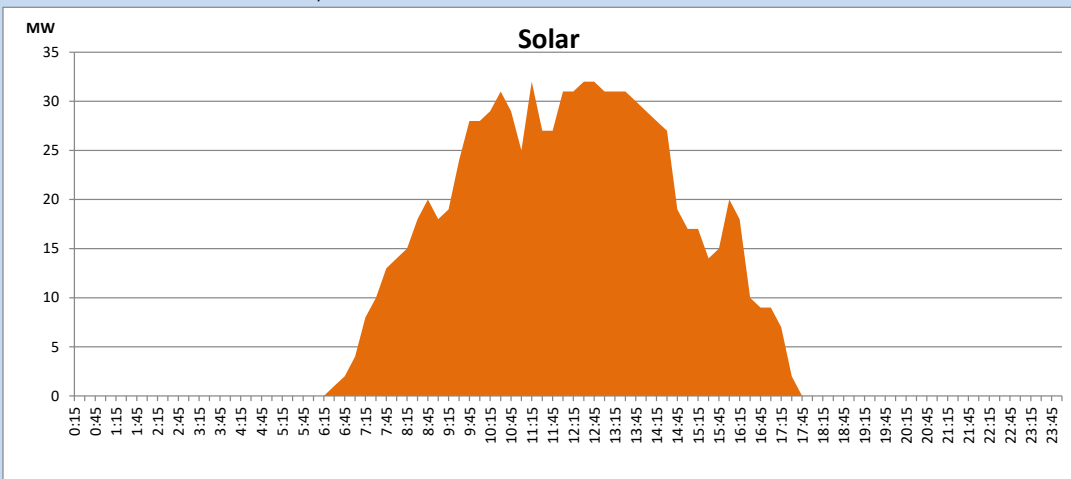
Based on Telemetered Power Stations only



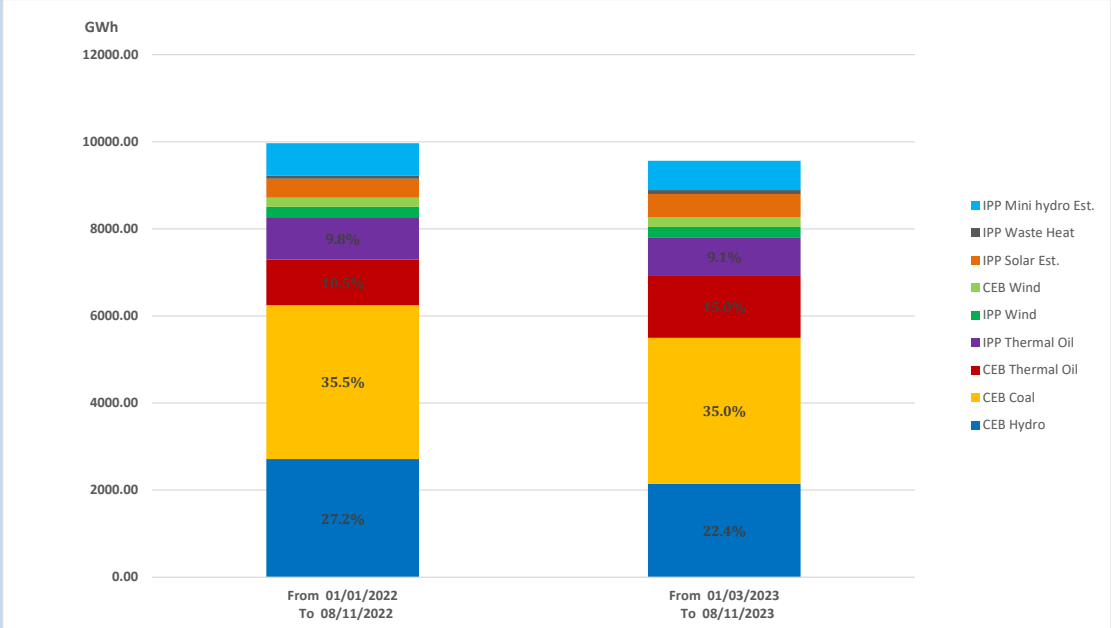
## Solar Generation during

August 11, 2023

Based on Telemetered Power Stations only



### 15. Cumulative Dispatch Comparison with Last Year



Cumulative dispatch  
 From 01/01/2022 To 08/11/2022  
 From 01/01/2023 To 08/11/2023

9966 GWh  
 9564 GWh

The above figures are including contribution from roof top solar, non telemetered solar and mini hydro plants

**Thermal Plant Fuel types**

Power Station	Primary Fuel
<b>CEB Thermal</b>	
<b>Sapugaskanda 1</b>	Heavy Fuel
<b>Sapugaskanda 2</b>	Heavy Fuel
<b>Kelanitissa Small Gas Turbines</b>	Auto Diesel
<b>GT 7 - Kelanitissa</b>	Auto Diesel
<b>Kelanitissa CCY</b>	Naphtha or Diesel
<b>Lakvijaya 1</b>	Coal
<b>Lakvijaya 2</b>	Coal
<b>Lakvijaya 3</b>	Coal
<b>Uthuru Janani</b>	Heavy Fuel
<b>Barge CEB</b>	Heavy Fuel
<b>KCCPS -2</b>	Auto Diesel

Power Station	Primary Fuel
<b>Private Thermal</b>	
<b>West Coast</b>	Auto Diesel / Heavy Fuel

**Major Incidents reported during the day**

August 11, 2023

1) Samanalawewa full load generation restricted, in order to comply with the operation constraints initiated by propagation of air bubbles at reservoir intake, which would further course for the possible formation of vortex at the same place, due to the severe depletion of Samanalawewa reservoir storage.