

Generation and Reservoirs Statistics

August 9, 2023



PUBLIC UTILITIES COMMISSION OF SRI LANKA

1. Daily Generation Mix in MWh

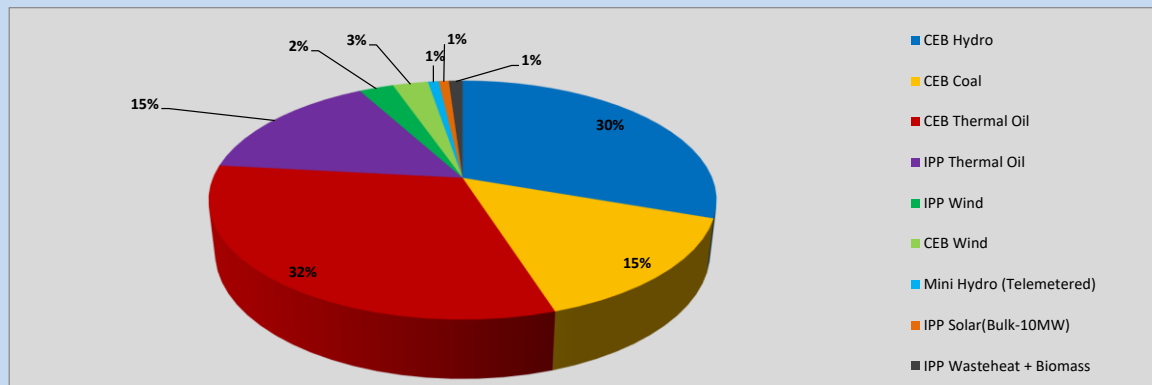


Table 01

CEB Hydro	13,462	MWh
CEB Coal	6,525	MWh
CEB Thermal Oil	14,046	MWh
IPP Thermal Oil	6,787	MWh
IPP Wind	1,167	MWh
CEB Wind	1,195	MWh
Mini Hydro (Telemetered)	361	MWh
IPP Solar (Bulk)	342	MWh
IPP Waste heat + Biomass	466	MWh
Total Generation (Excluding estimated figures)	44,351	MWh
* Estimated unserved energy	0	MWh
* Estimated Mini Hydro (Non telemetered)	3409	MWh
* Estimated IPP Solar PV (Bulk 1-10MW)	304	MWh
* Estimated Solar Roof Top PV	1650	MWh
Total Generation (Including estimated figures)	49,714	MWh

* Estimated figures of CEB generation report

2. Cumulative Dispatch

Following data excludes the contribution from roof top solar, non telemetered solar and mini hydro plants

Table 02 - Current Month

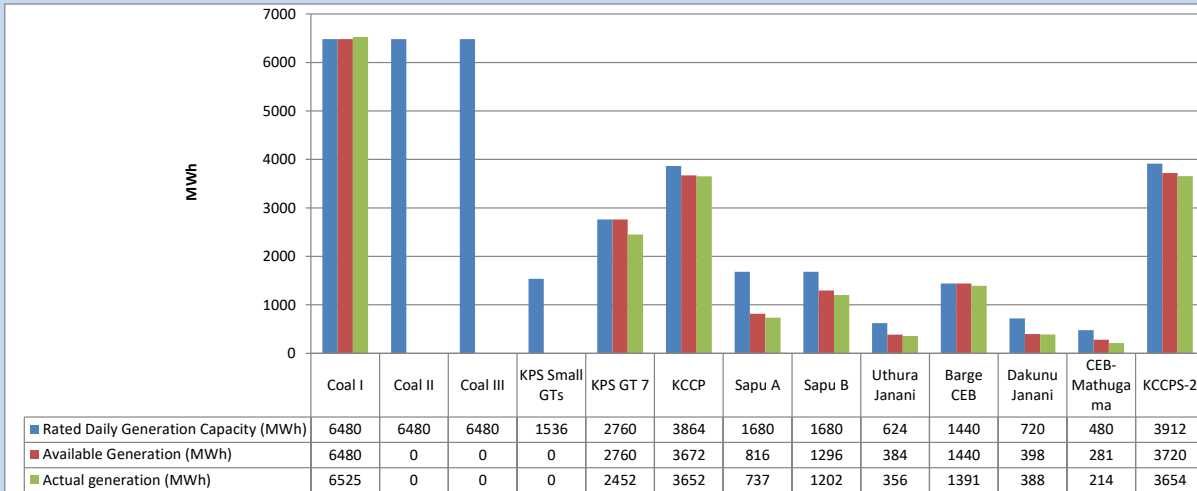
Category	Dispatch (GWh)	
CEB Hydro	81	21.58%
CEB Coal	92	24.49%
CEB Thermal Oil	109	29.20%
IPP Thermal	54	14.42%
SPP Wind	13	3.55%
CEB Wind	14	3.66%
Mini Hydro (Telemetered)	3	0.85%
IPP Solar (Bulk-10MW)	3	0.88%
IPP Waste heat + BMP	5	1.37%
Total	374	

Table 03 - Current Year

Category	Dispatch (GWh)	
CEB Hydro	2,127	24.91%
CEB Coal	3,341	39.12%
CEB Thermal Oil	1,413	16.54%
IPP Thermal	858	10.04%
SPP Wind	223	2.61%
CEB Wind	230	2.69%
Mini Hydro (Telemetered)	204	2.39%
IPP Solar (Bulk-10MW)	66	0.78%
IPP Waste heat	78	0.91%
Total	8,542	

3. CEB owned Thermal Plant Dispatch

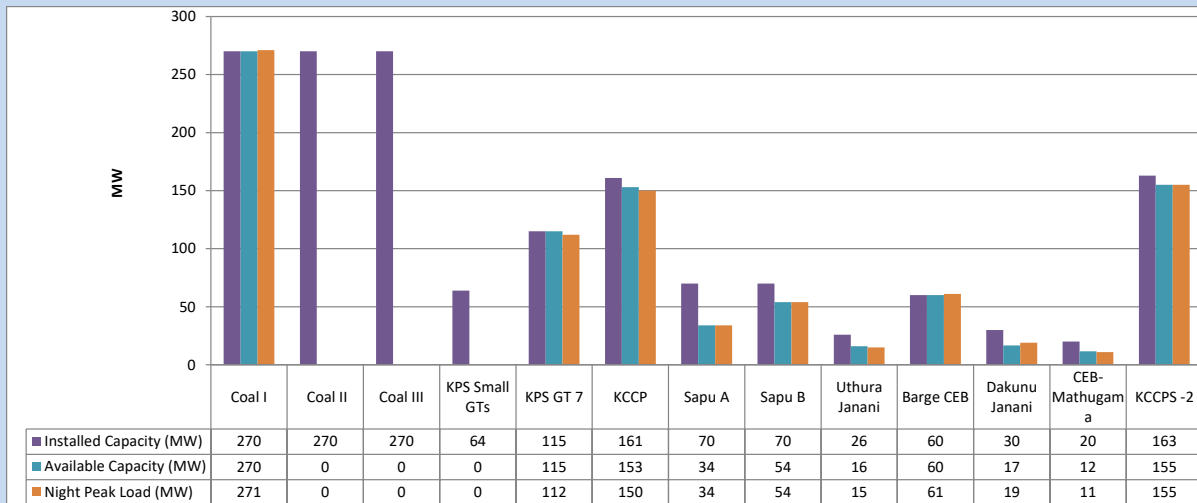
August 9, 2023



Available Generation is estimated based on plant availability at 6.00am on

August 10, 2023

4. CEB owned Thermal Plant Loading at the Night Peak

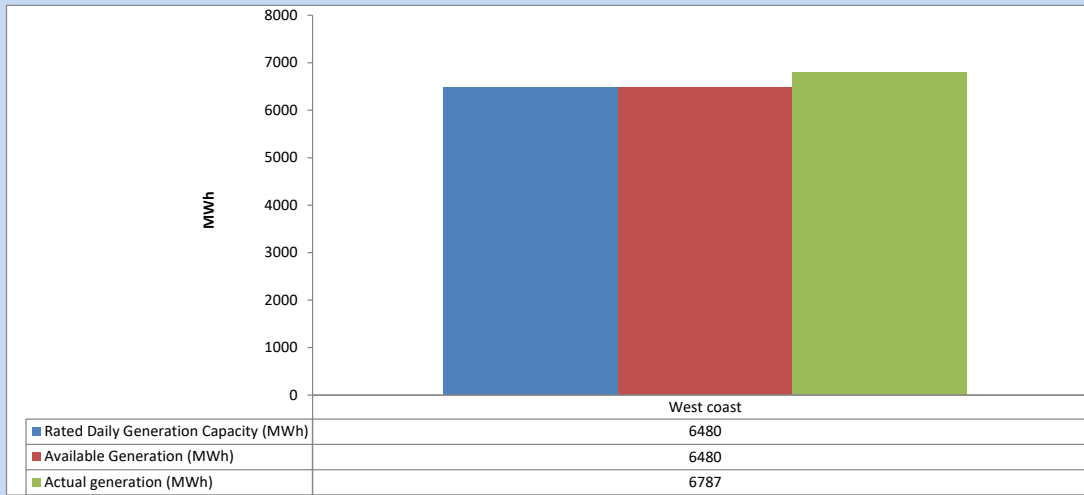


Plant availability is recorded at 6.00 am on

August 10, 2023

5. IPP owned Thermal Plant Dispatch

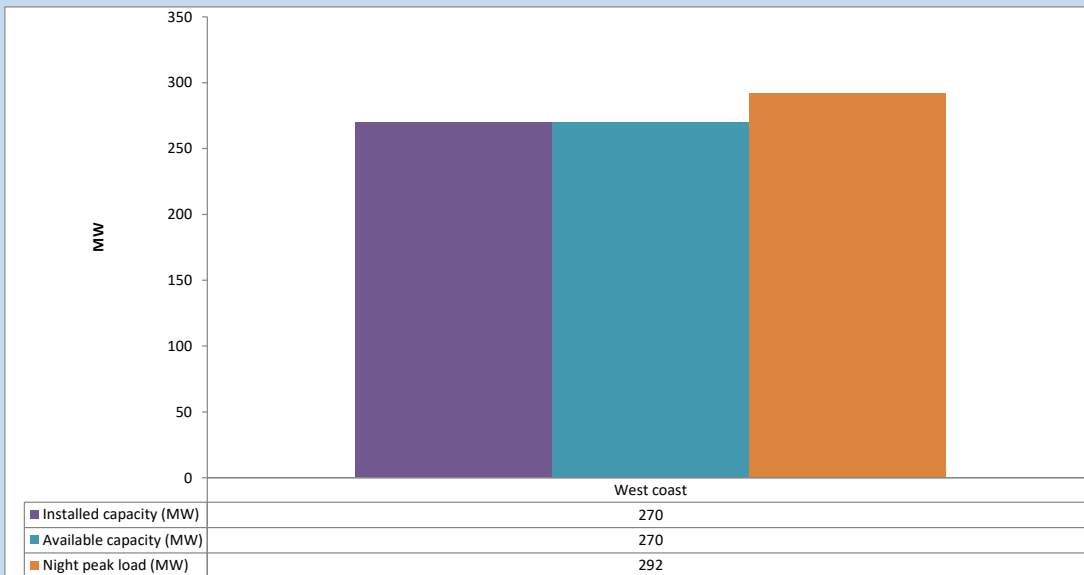
August 9, 2023



Available Generation is estimated based on plant availability at 6.00am on

August 10, 2023

6. IPP owned Thermal Plant Loading at the Night Peak

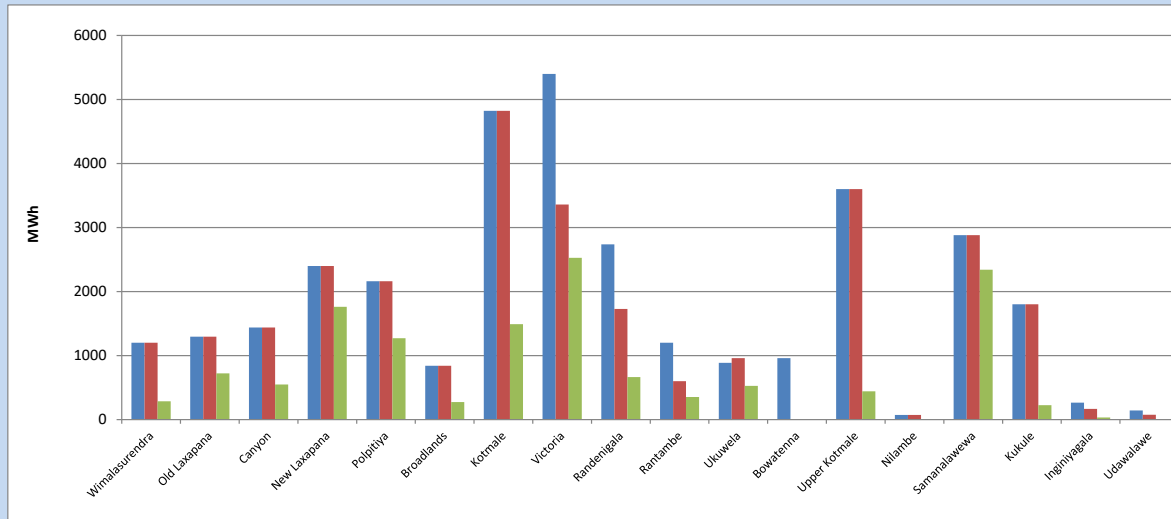


Plant availability is recorded at 6.00 am on

August 10, 2023

7. Major Hydro Plant Dispatch

August 9, 2023

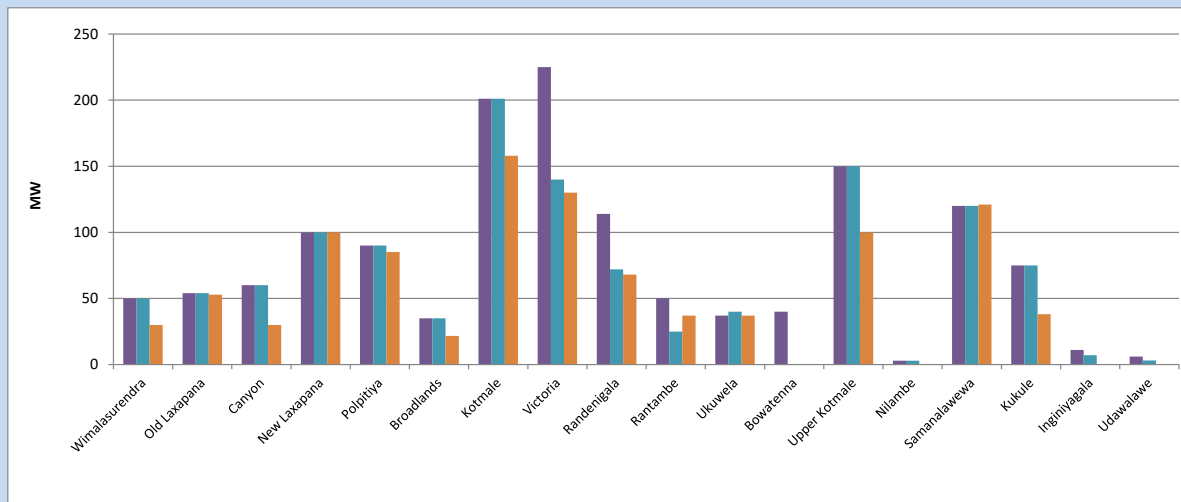


Available Generation is estimated based on plant availability at 6.00am on August 10, 2023
 Broadlands power plant is operating in the Commissioning Stage

August 10, 2023

8. Major Hydro Plant Loading at Night Peak

August 9, 2023



Plant availability is recorded at 6.00 am on August 10, 2023
 Broadlands power plant is operating in the Commissioning Stage

August 10, 2023

9. Summary of Major Plant performance

Table 04

Plant	Installed Capacity	Plant Availability	Night peak Load	Plant Dispatch
	(MW)	(MW)	(MW)	(MWh)
Wimalasurendra	50	50	30	285
Old Laxapana	54	54	53	723
Canyon	60	60	30	549
New Laxapana	100	100	100	1,762
Polpitiya	90	90	85	1,270
Broadlands	35	35	22	275
Kotmale	201	201	158	1,490
Victoria	225	140	130	2,526
Randenigala	114	72	68	664
Rantambe	50	25	37	352
Ukuwela	37	40	37	527
Bowatenna	40	0	0	0
Upper Kotmale	150	150	100	442
Nilambe	3	3	0	0
Samanalawewa	120	120	121	2,340
Kukule	75	75	38	224
Inginiyagala	11	7	0	33
Udawalawe	6	3	0	0
Puttalam Coal I	270	270	271	6,525
Puttalam Coal II	270	0	0	0
Puttalam Coal III	270	0	0	0
KPS Small GTs	64	0	0	0
KPS GT 7	115	115	112	2,452
KCCP	161	153	150	3,652
Sapugaskanda A	70	34	34	737
Sapugaskanda B	70	54	54	1,202
Uthura Janani	26	16	15	356
Barge CEB	60	60	61	1,391
CEB-Hambantota	30	17	19	388
CEB-Mathugama	20	12	11	214
ACE Matara	24	0	0	0
Asia Power	50	0	0	0
KCCPS -2	163	155	155	3,654
West Coast	270	270	292	6,787
Nothern Power	36	0	0	0
ACE Embilipitiya	93	0	0	0
Total	3,483	2,380	2,309	44,351

Plant availability is the availability recorded at 6 am on

August 10, 2023

10. Contribution to the Night Peak in MW

August 9, 2023

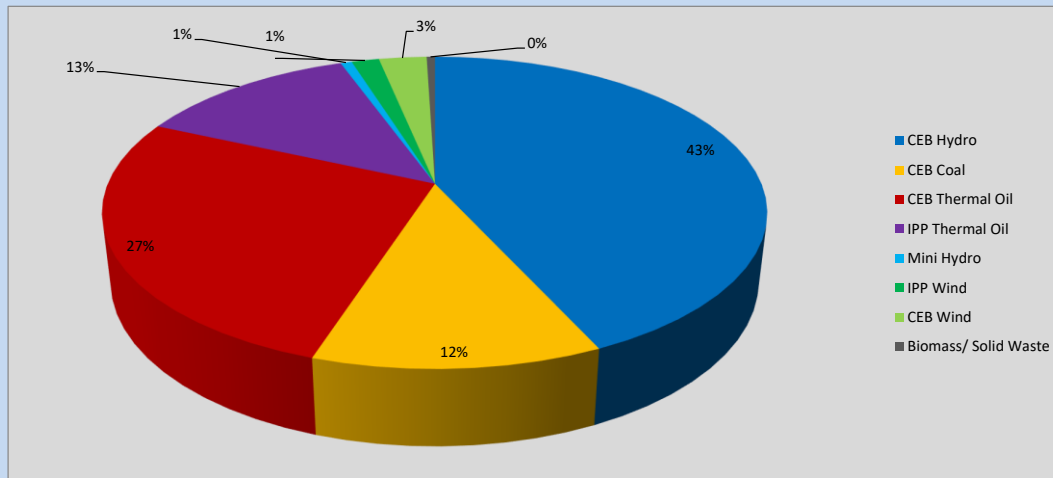


Table 05

CEB Hydro	987	MW
CEB Coal	271	MW
CEB Thermal Oil	611	MW
IPP Thermal Oil	292	MW
Mini Hydro (Telemetered)	15	MW
IPP Wind	36.6	MW
CEB Wind	63.4	MW
Biomass/ Solid Waste	11	MW

Recorded Peak Demand Data

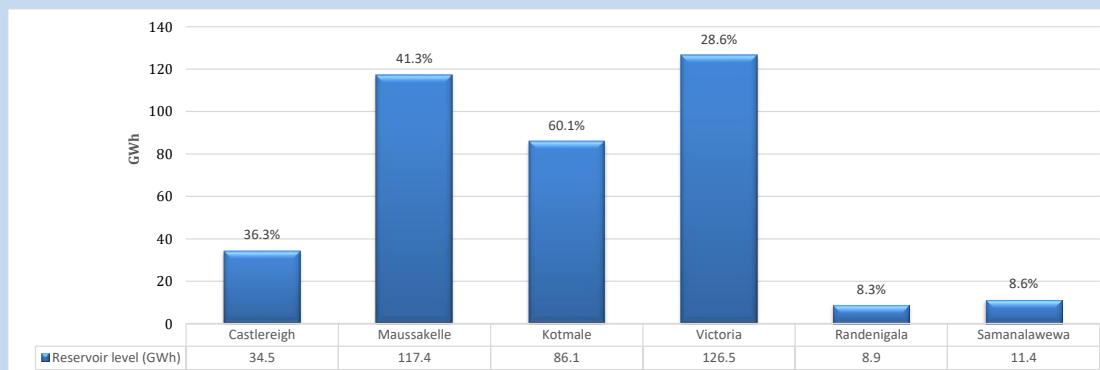
Table 06

Night Peak*	2,287	MW
Day Peak Maximum Demand	2,130	MW
Day Peak Minimum Demand	1,765	MW
Off Peak Minimum Demand	1,373	MW

Above figures are excluding contribution from roof top solar, non telemetered solar and mini hydro plants

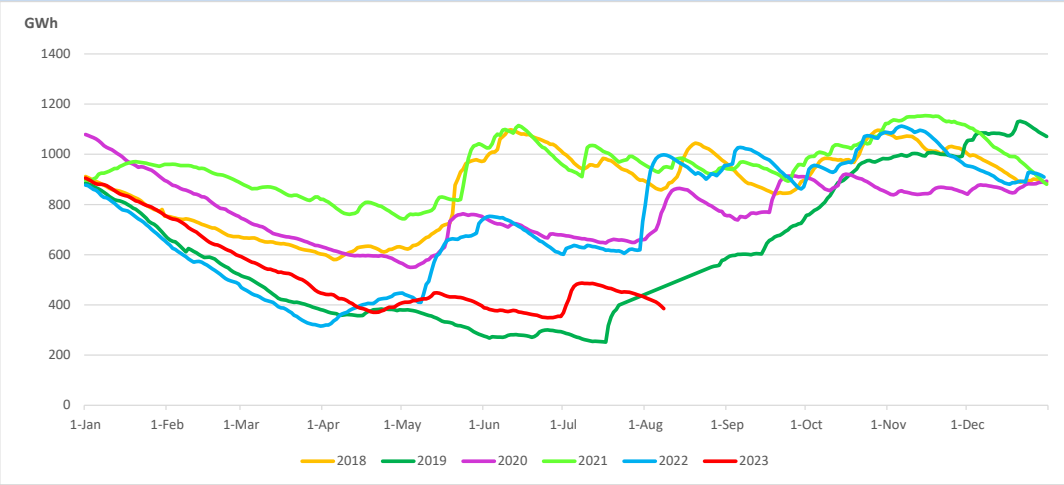
Reservoir Levels -

as at 06.00 Hr on August 10, 2023

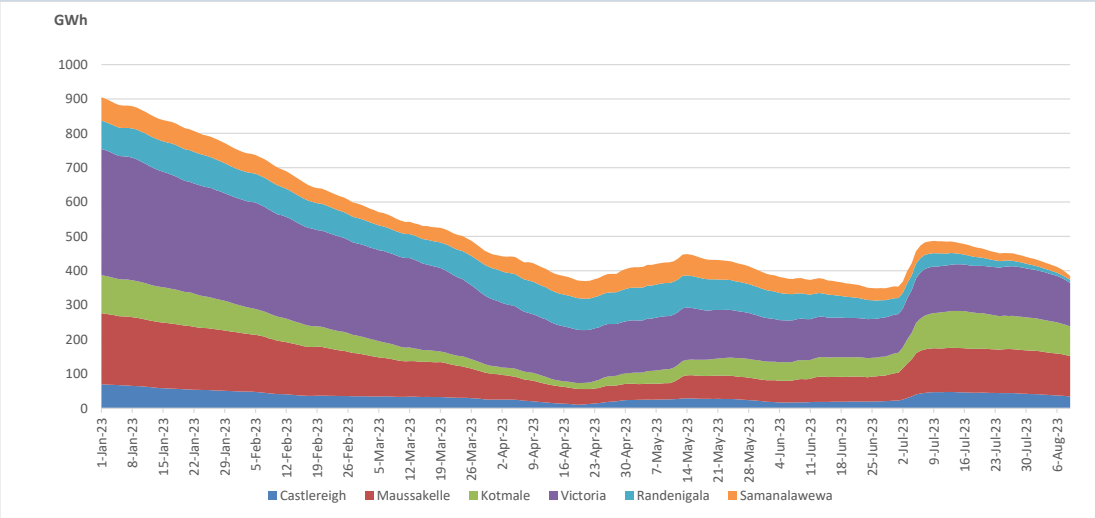


Total Reservoir Level 384.8 GWh
 % of Total capacity 31.9%

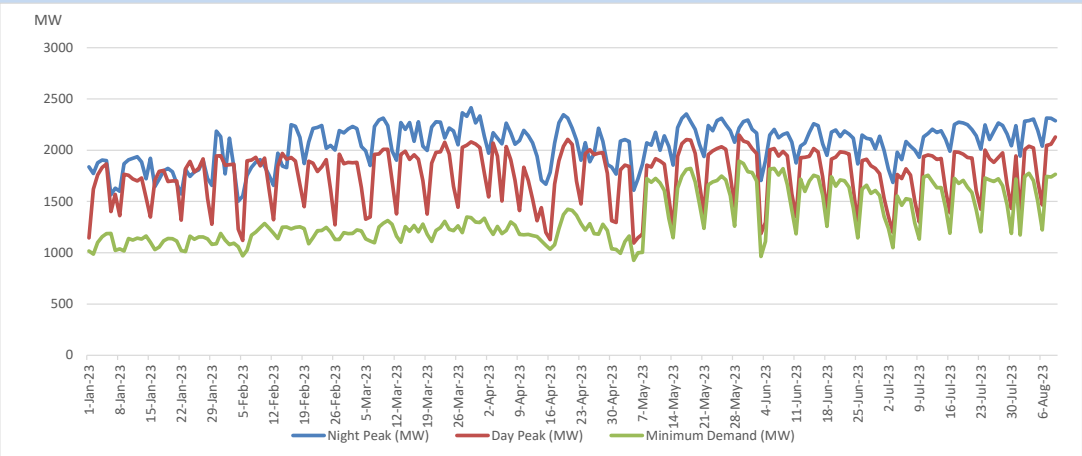
11. Comparison of Total Reservoir Storage Levels with Past Years



12. Variation of Major Hydro Reservoir Levels in the current year (GWh)



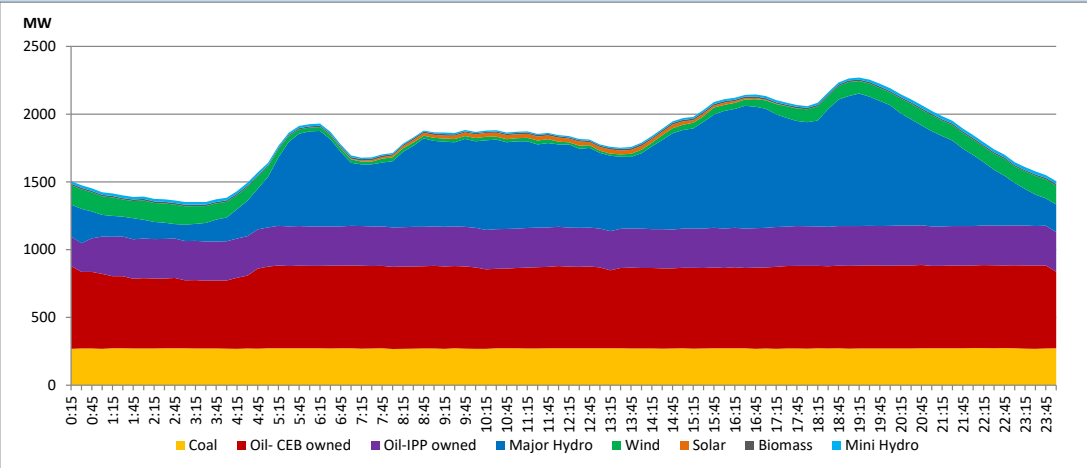
13. Variation of Demand during the current year



The above figures are excluding contribution from roof top solar, non telemetered solar and mini hydro plants

14. Daily Load Curve

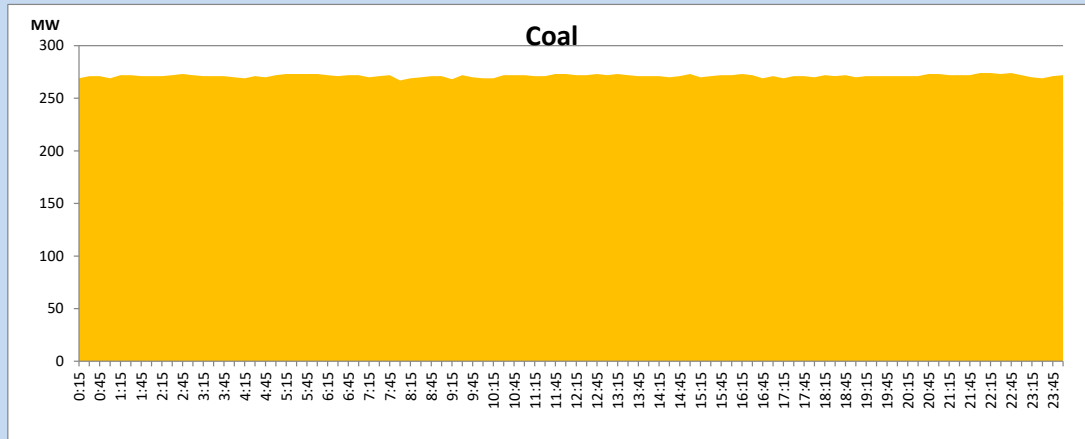
August 9, 2023



Solar and wind data is based on Telemetered Power Stations only

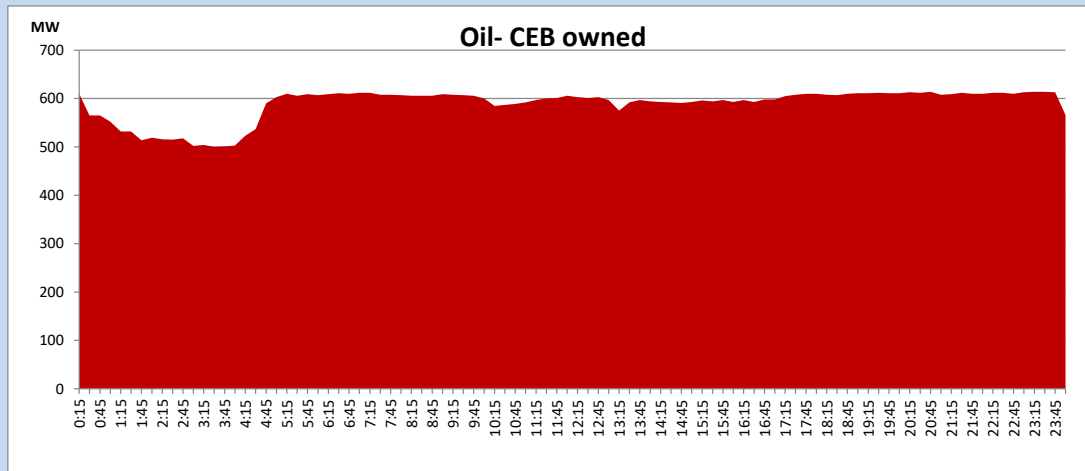
Coal Generation during

August 9, 2023



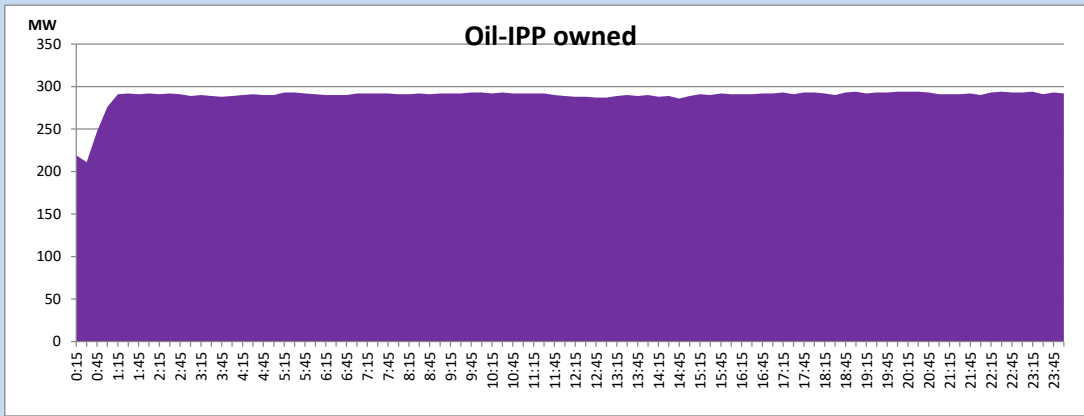
CEB Oil Plant Generation during

August 9, 2023



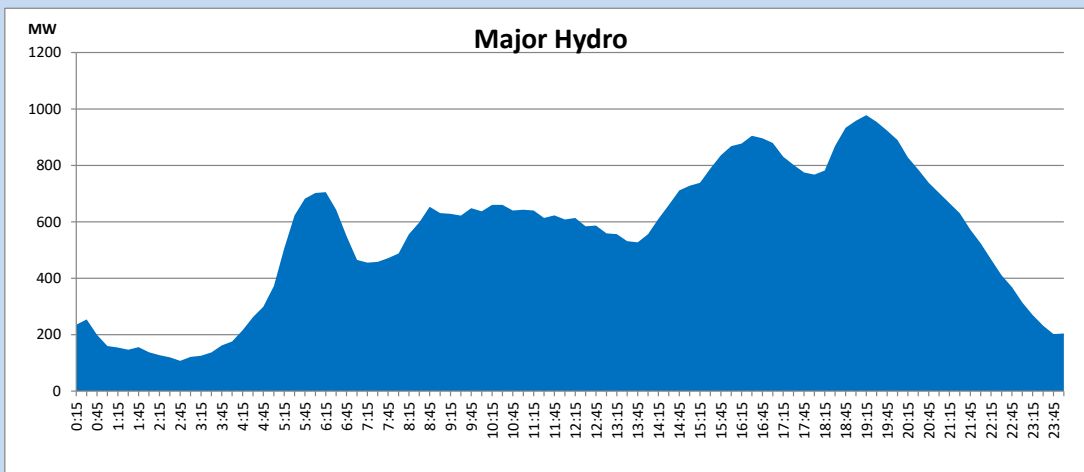
IPP Oil Plant Generation during

August 9, 2023



Major Hydro Generation during

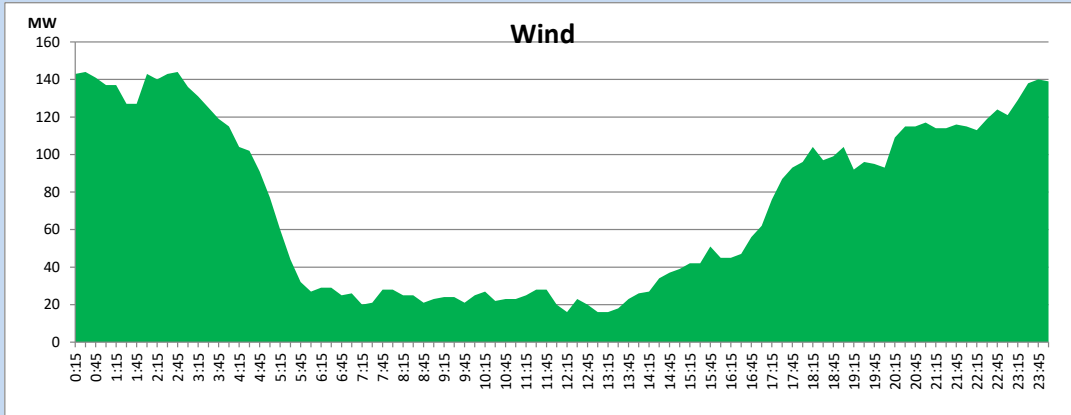
August 9, 2023



Wind Generation during

August 9, 2023

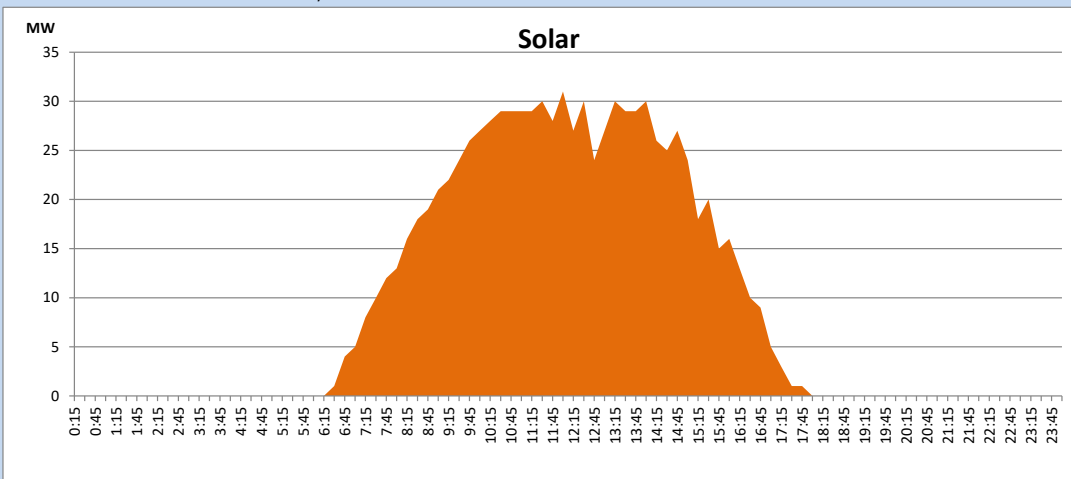
Based on Telemetered Power Stations only



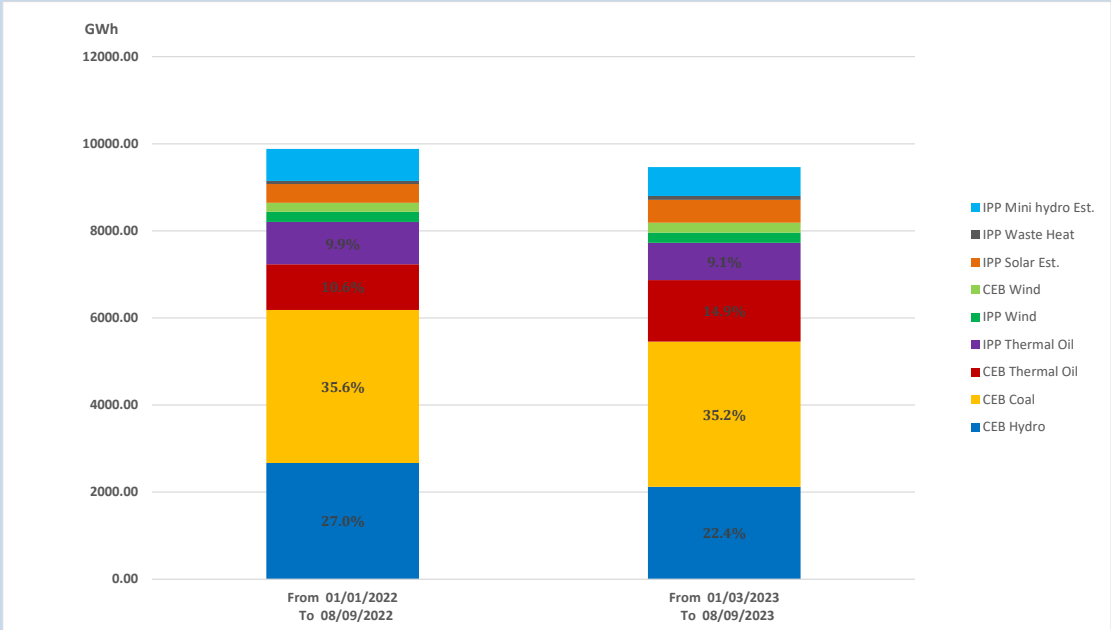
Solar Generation during

August 9, 2023

Based on Telemetered Power Stations only



15. Cumulative Dispatch Comparison with Last Year



Cumulative dispatch
 From 01/01/2022 To 08/09/2022
 From 01/01/2023 To 08/09/2023

9880 GWh
 9466 GWh

The above figures are including contribution from roof top solar, non telemetered solar and mini hydro plants

Thermal Plant Fuel types

Power Station	Primary Fuel
CEB Thermal	
Sapugaskanda 1	Heavy Fuel
Sapugaskanda 2	Heavy Fuel
Kelanitissa Small Gas Turbines	Auto Diesel
GT 7 - Kelanitissa	Auto Diesel
Kelanitissa CCY	Naphtha or Diesel
Lakvijaya 1	Coal
Lakvijaya 2	Coal
Lakvijaya 3	Coal
Uthuru Janani	Heavy Fuel
Barge CEB	Heavy Fuel
KCCPS -2	Auto Diesel

Power Station	Primary Fuel
Private Thermal	
West Coast	Auto Diesel / Heavy Fuel

Major Incidents reported during the day

August 9, 2023

1) Nil.