

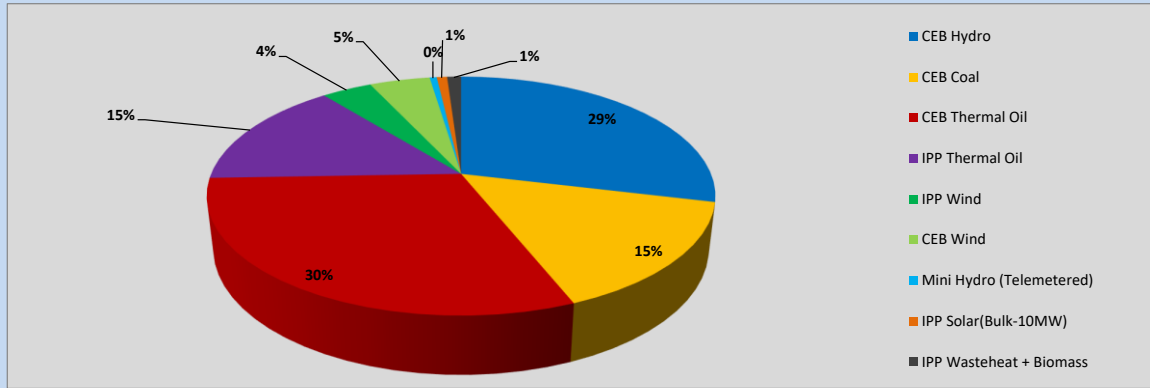
# Generation and Reservoirs Statistics

August 8, 2023



PUBLIC UTILITIES COMMISSION OF SRI LANKA

## 1. Daily Generation Mix in MWh



**Table 01**

CEB Hydro	12,654	MWh
CEB Coal	6,667	MWh
CEB Thermal Oil	13,435	MWh
IPP Thermal Oil	6,487	MWh
IPP Wind	1,683	MWh
CEB Wind	2,024	MWh
Mini Hydro (Telemetered)	236	MWh
IPP Solar (Bulk)	346	MWh
IPP Waste heat + Biomass	467	MWh
<b>Total Generation (Excluding estimated figures)</b>	<b>43,999</b>	<b>MWh</b>
* Estimated unserved energy	0	MWh
* Estimated Mini Hydro (Non telemetered)	3534	MWh
* Estimated IPP Solar PV (Bulk 1-10MW)	304	MWh
* Estimated Solar Roof Top PV	1650	MWh
<b>Total Generation (Including estimated figures)</b>	<b>49,487</b>	<b>MWh</b>

\* Estimated figures of CEB generation report

## 2. Cumulative Dispatch

Following data excludes the contribution from roof top solar, non telemetered solar and mini hydro plants

**Table 02 - Current Month**

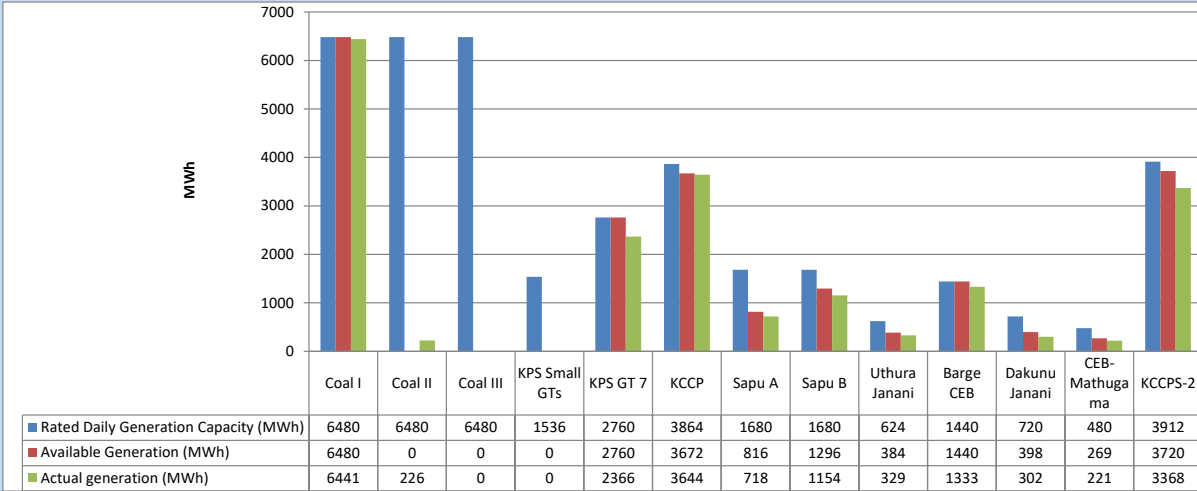
Category	Dispatch (GWh)	
CEB Hydro	67	20.40%
CEB Coal	85	25.80%
CEB Thermal Oil	95	28.87%
IPP Thermal	47	14.30%
SPP Wind	12	3.67%
CEB Wind	12	3.79%
Mini Hydro (Telemetered)	3	0.86%
IPP Solar (Bulk-10MW)	3	0.89%
IPP Waste heat + BMP	5	1.41%
<b>Total</b>	<b>330</b>	

**Table 03 - Current Year**

Category	Dispatch (GWh)	
CEB Hydro	2,114	24.88%
CEB Coal	3,335	39.24%
CEB Thermal Oil	1,399	16.46%
IPP Thermal	851	10.01%
SPP Wind	222	2.61%
CEB Wind	229	2.69%
Mini Hydro (Telemetered)	204	2.40%
IPP Solar (Bulk-10MW)	66	0.78%
IPP Waste heat	77	0.91%
<b>Total</b>	<b>8,498</b>	

### 3. CEB owned Thermal Plant Dispatch

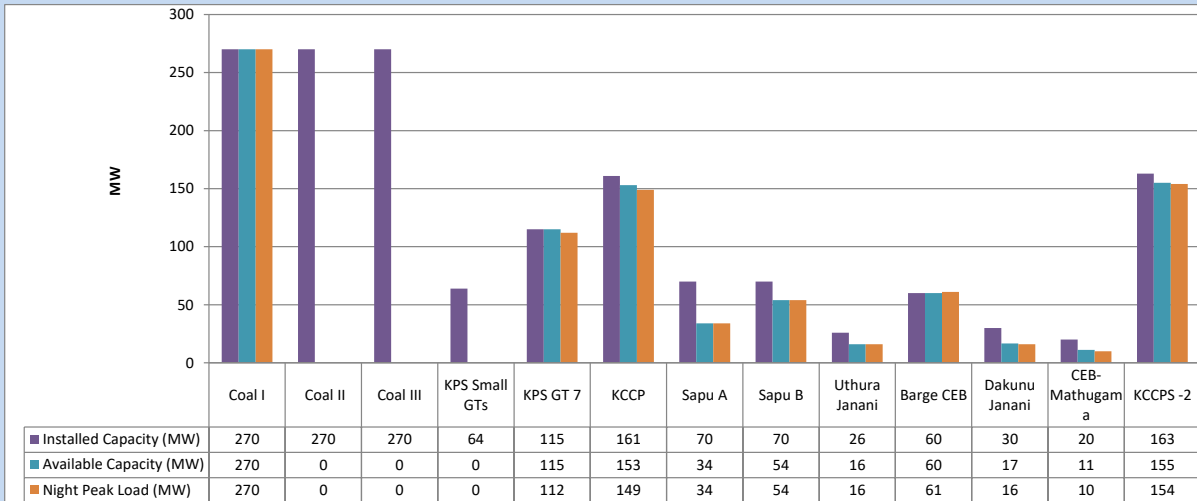
August 8, 2023



Available Generation is estimated based on plant availability at 6.00am on

August 9, 2023

### 4. CEB owned Thermal Plant Loading at the Night Peak

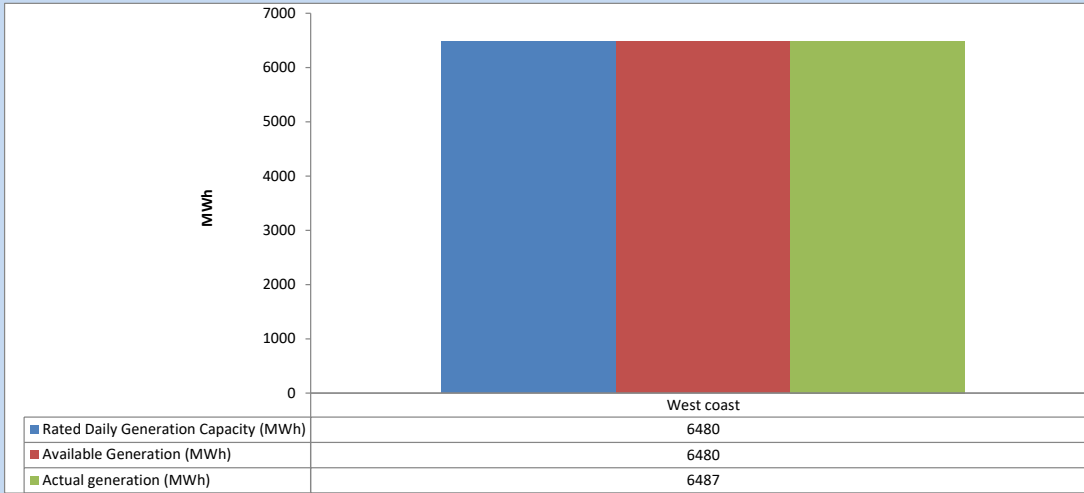


Plant availability is recorded at 6.00 am on

August 9, 2023

### 5. IPP owned Thermal Plant Dispatch

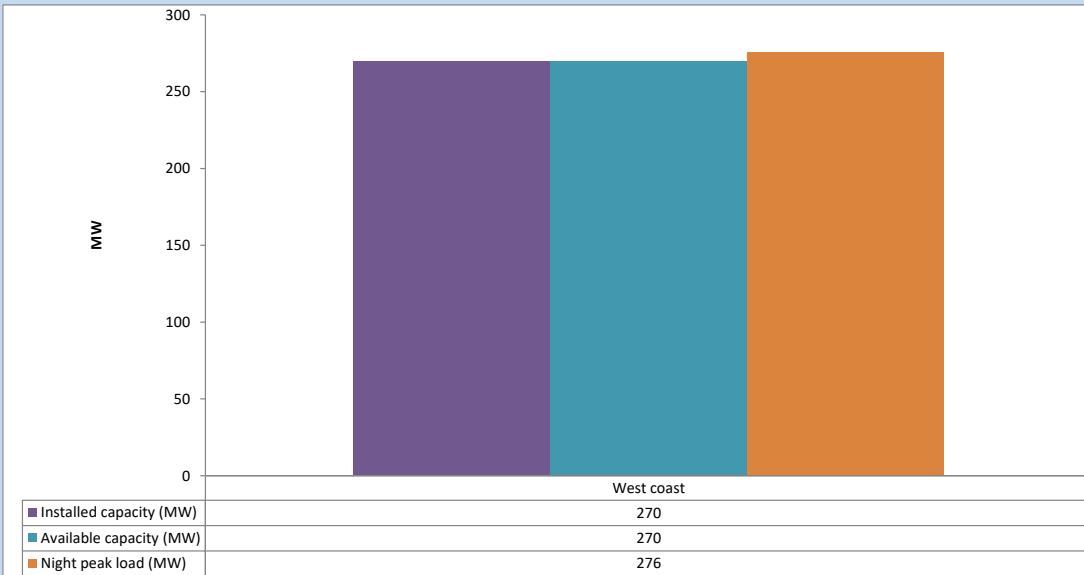
August 8, 2023



Available Generation is estimated based on plant availability at 6.00am on

August 9, 2023

### 6. IPP owned Thermal Plant Loading at the Night Peak

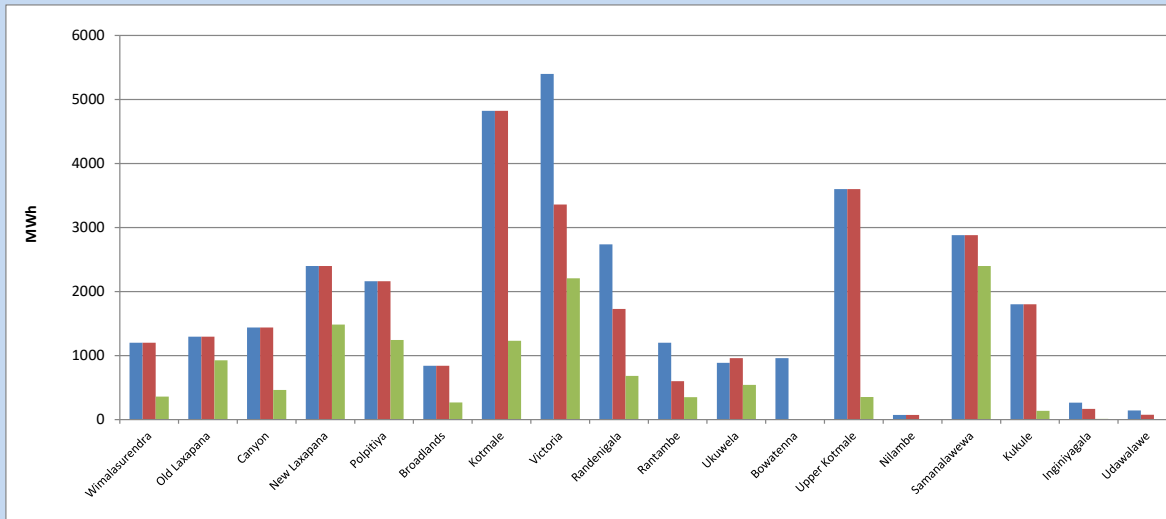


Plant availability is recorded at 6.00 am on

August 9, 2023

### 7. Major Hydro Plant Dispatch

August 8, 2023

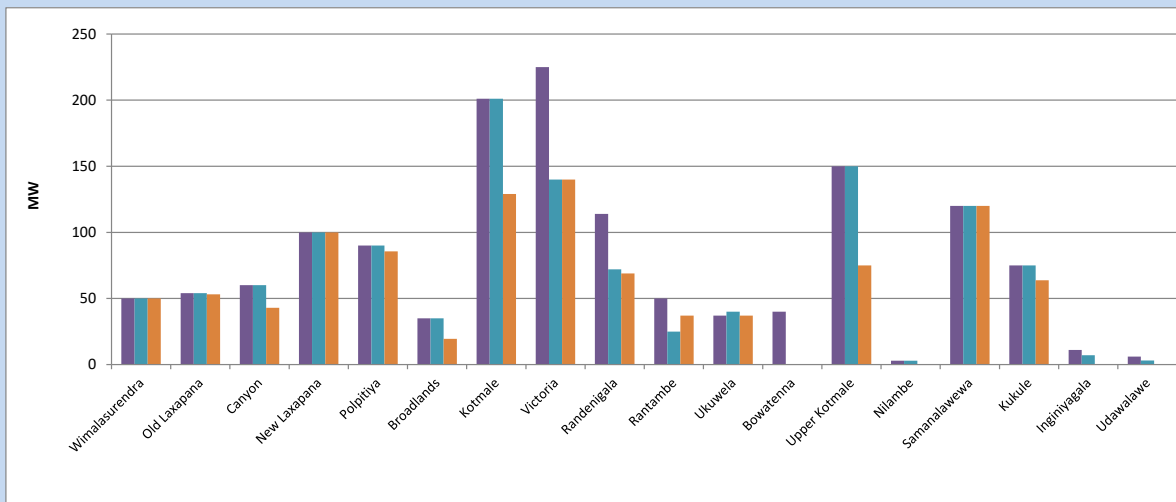


Available Generation is estimated based on plant availability at 6.00am on August 9, 2023  
 Broadlands power plant is operating in the Commissioning Stage

August 9, 2023

### 8. Major Hydro Plant Loading at Night Peak

August 8, 2023



Plant availability is recorded at 6.00 am on August 9, 2023  
 Broadlands power plant is operating in the Commissioning Stage

August 9, 2023

## 9. Summary of Major Plant performance

**Table 04**

Plant	Installed Capacity	Plant Availability	Night peak Load	Plant Dispatch
	(MW)	(MW)	(MW)	(MWh)
Wimalasurendra	50	50	50	360
Old Laxapana	54	54	53	927
Canyon	60	60	43	463
New Laxapana	100	100	100	1,483
Polpitiya	90	90	86	1,243
Broadlands	35	35	20	269
Kotmale	201	201	129	1,230
Victoria	225	140	140	2,206
Randenigala	114	72	69	681
Rantambe	50	25	37	350
Ukuwela	37	40	37	543
Bowatenna	40	0	0	0
Upper Kotmale	150	150	75	352
Nilambe	3	3	0	0
Samanalawewa	120	120	120	2,398
Kukule	75	75	64	137
Inginiyagala	11	7	0	12
Udawalawe	6	3	0	0
Puttalam Coal I	270	270	270	6,441
Puttalam Coal II	270	0	0	226
Puttalam Coal III	270	0	0	0
KPS Small GTs	64	0	0	0
KPS GT 7	115	115	112	2,366
KCCP	161	153	149	3,644
Sapugaskanda A	70	34	34	718
Sapugaskanda B	70	54	54	1,154
Uthura Janani	26	16	16	329
Barge CEB	60	60	61	1,333
CEB-Hambantota	30	17	16	302
CEB-Mathugama	20	11	10	221
ACE Matara	24	0	0	0
Asia Power	50	0	0	0
KCCPS -2	163	155	154	3,368
West Coast	270	270	276	6,487
Nothern Power	36	0	0	0
ACE Embilipitiya	93	0	0	0
<b>Total</b>	<b>3,483</b>	<b>2,380</b>	<b>2,335</b>	<b>43,999</b>

Plant availability is the availability recorded at 6 am on

August 9, 2023

### 10. Contribution to the Night Peak in MW

August 8, 2023

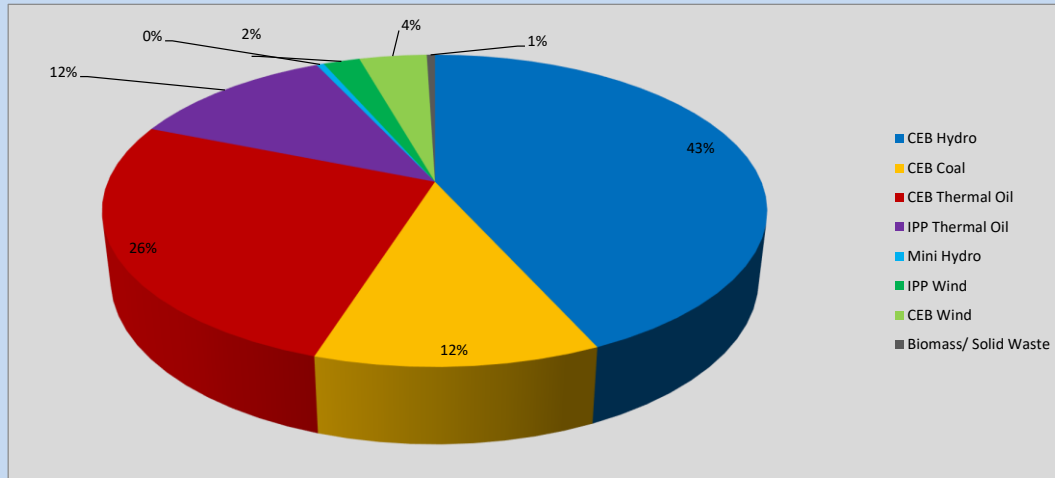


Table 05

CEB Hydro	1000	MW
CEB Coal	270	MW
CEB Thermal Oil	606	MW
IPP Thermal Oil	276	MW
Mini Hydro (Telemetered)	10	MW
IPP Wind	49.2	MW
CEB Wind	90.7	MW
Biomass/ Solid Waste	11	MW

### Recorded Peak Demand Data

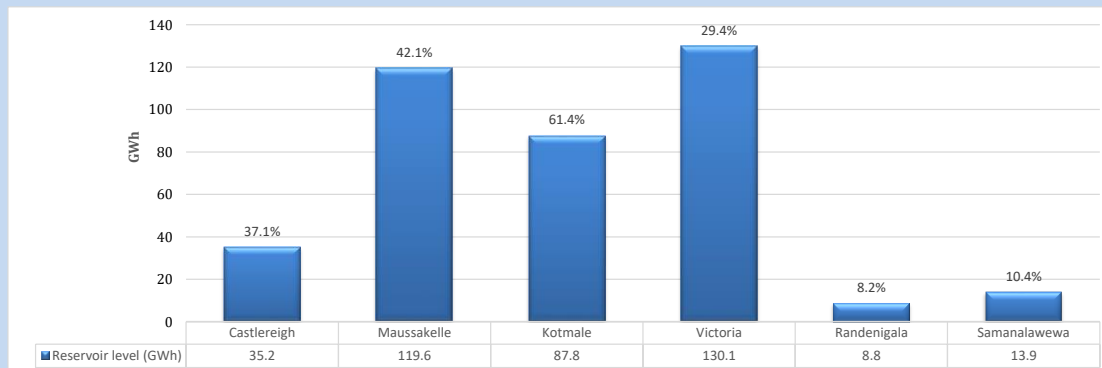
Table 06

Night Peak*	2,313	MW
Day Peak Maximum Demand	2,059	MW
Day Peak Minimum Demand	1,738	MW
Off Peak Minimum Demand	1,366	MW

Above figures are excluding contribution from roof top solar, non telemetered solar and mini hydro plants

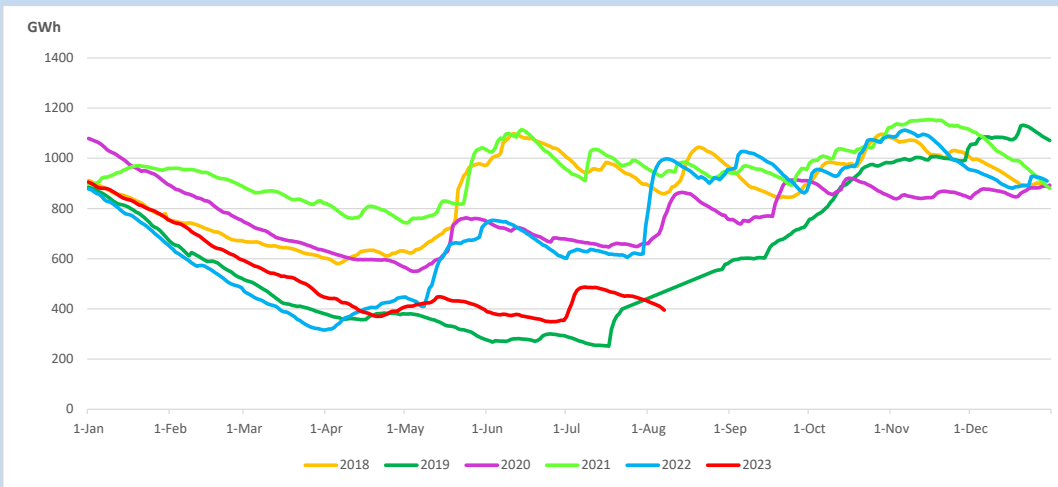
### Reservoir Levels -

as at 06.00 Hr on August 9, 2023

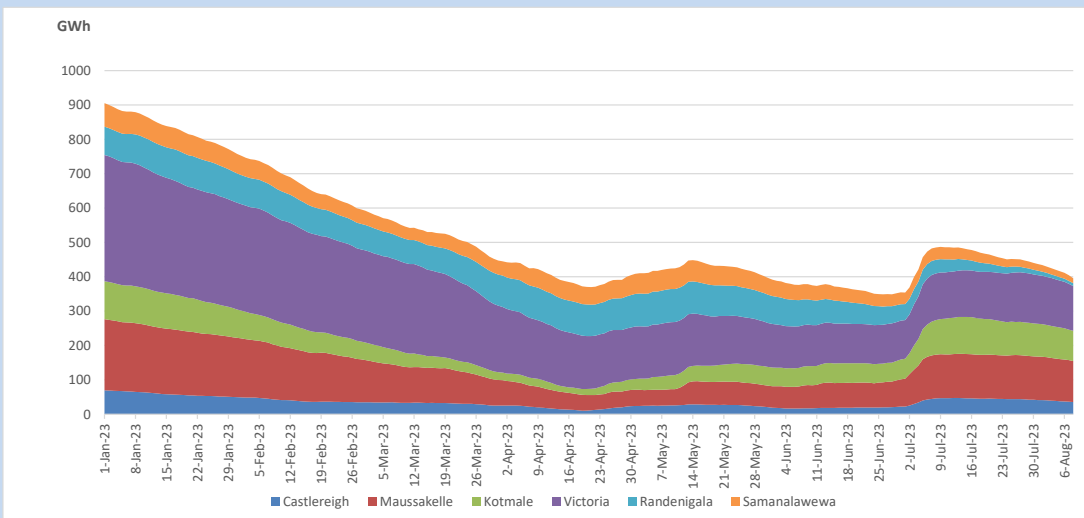


Total Reservoir Level 395.4 GWh  
% of Total capacity 32.8%

### 11. Comparison of Total Reservoir Storage Levels with Past Years

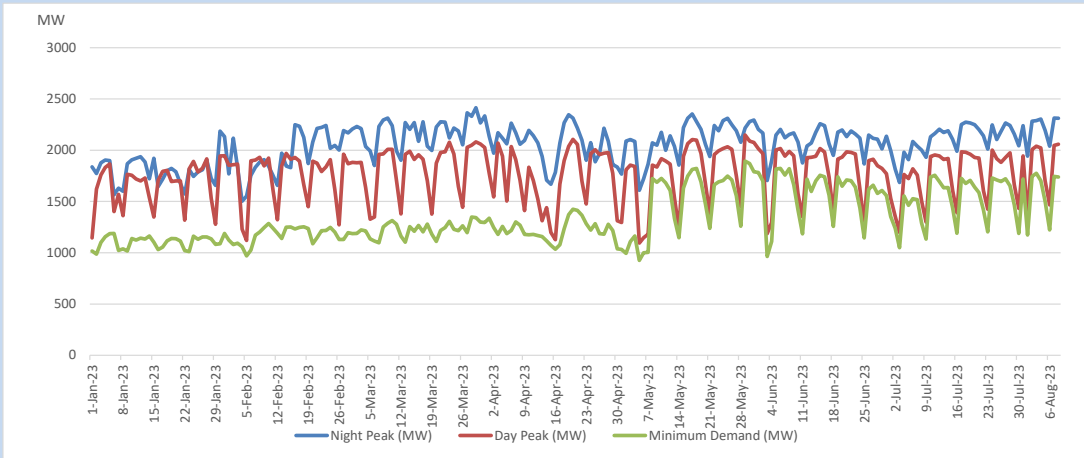


### 12. Variation of Major Hydro Reservoir Levels in the current year (GWh)





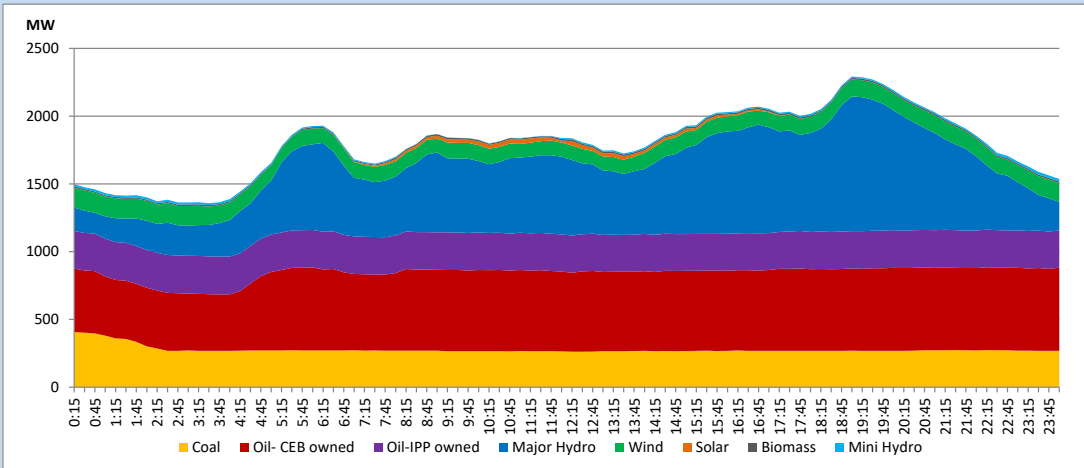
### 13. Variation of Demand during the current year



The above figures are excluding contribution from roof top solar, non telemetered solar and mini hydro plants

### 14. Daily Load Curve

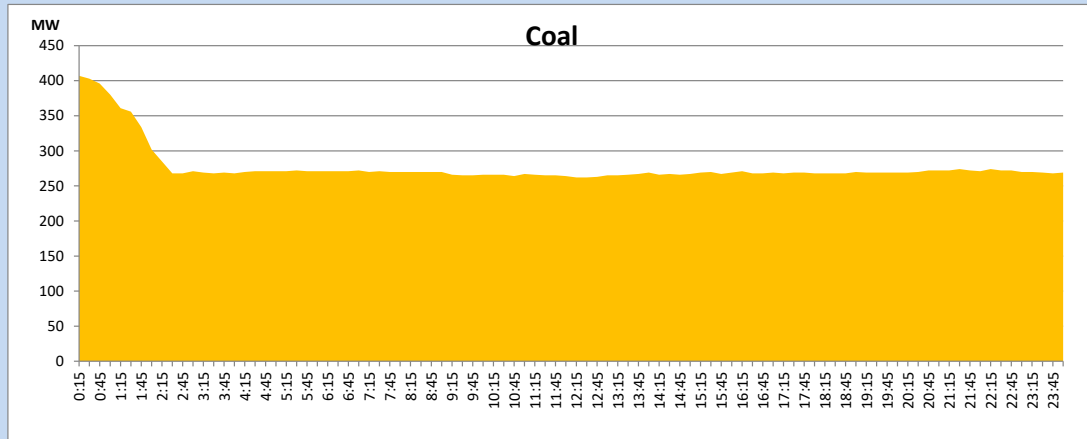
August 8, 2023



Solar and wind data is based on Telemetered Power Stations only

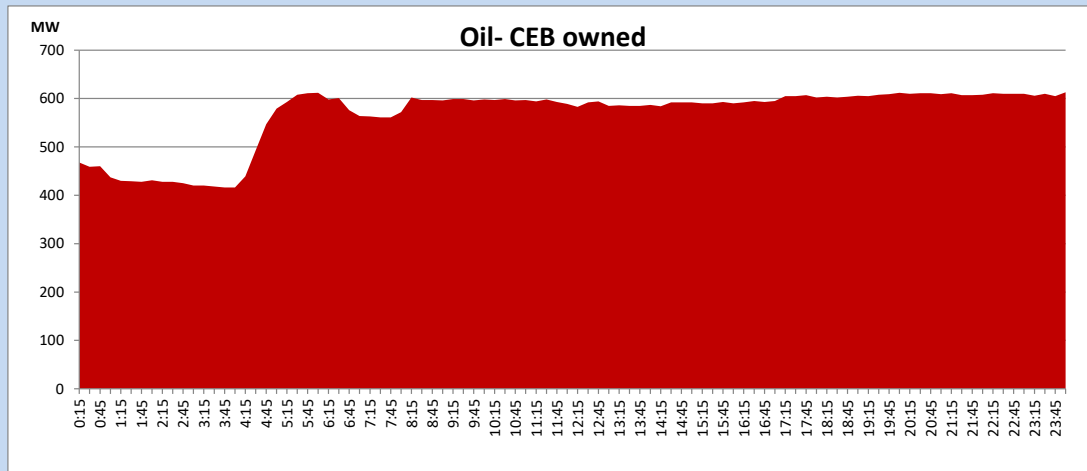
Coal Generation during

August 8, 2023



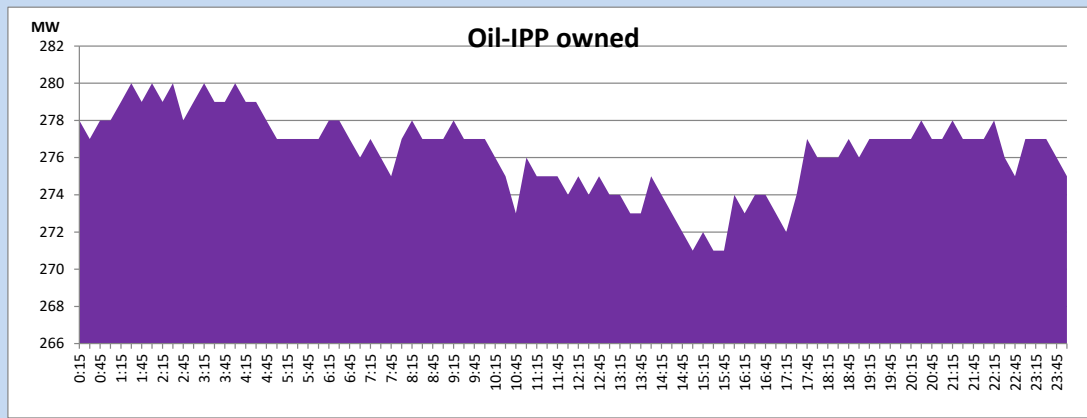
CEB Oil Plant Generation during

August 8, 2023



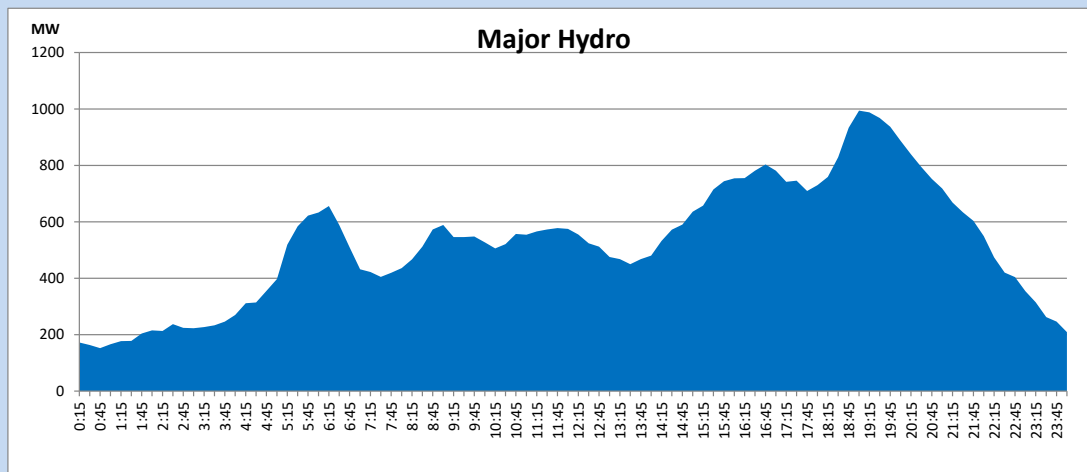
IPP Oil Plant Generation during

August 8, 2023



Major Hydro Generation during

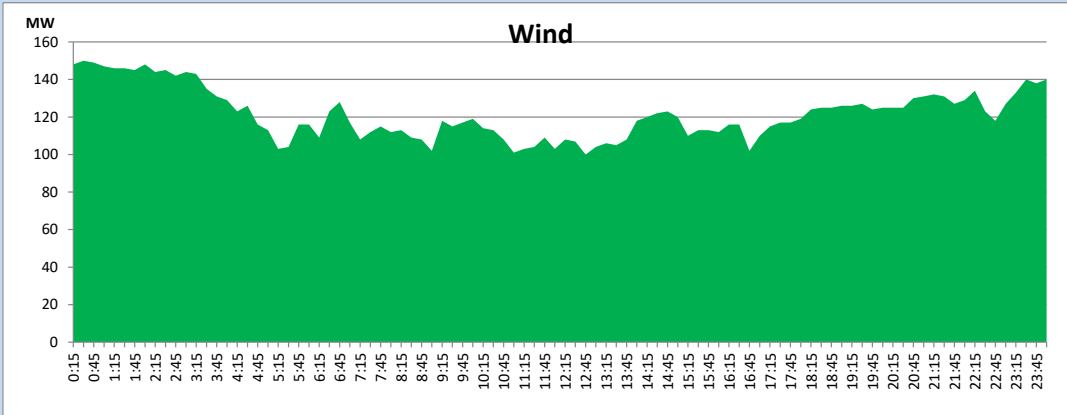
August 8, 2023



## Wind Generation during

August 8, 2023

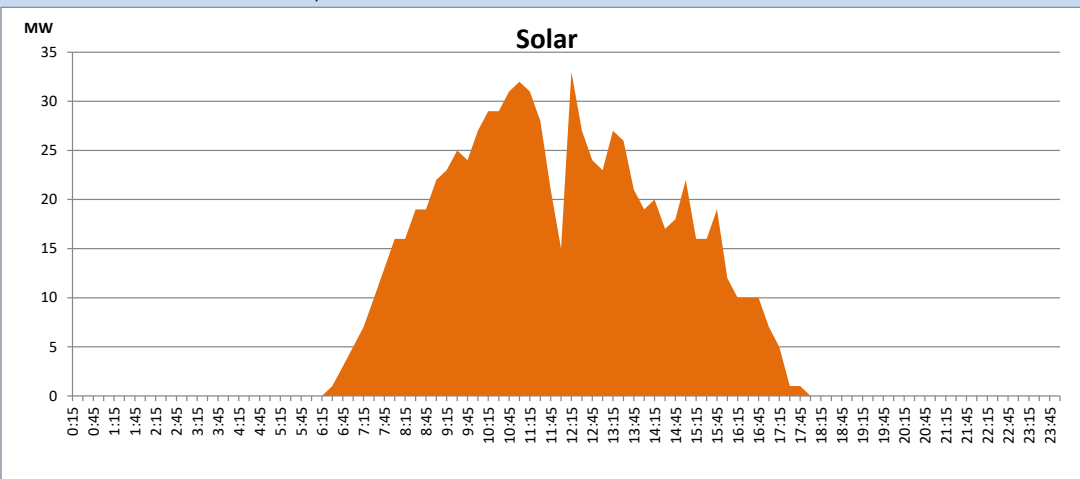
Based on Telemetered Power Stations only



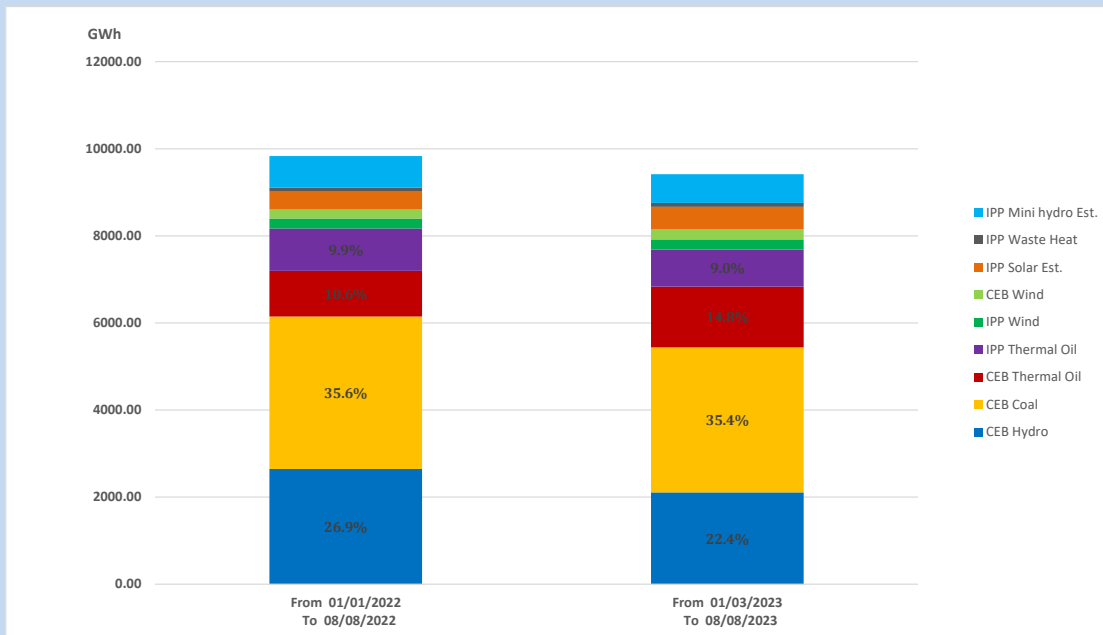
## Solar Generation during

August 8, 2023

Based on Telemetered Power Stations only



### 15. Cumulative Dispatch Comparison with Last Year



Cumulative dispatch  
 From 01/01/2022 To 08/08/2022  
 From 01/01/2023 To 08/08/2023

9834 GWh  
 9416 GWh

The above figures are including contribution from roof top solar, non telemetered solar and mini hydro plants

**Thermal Plant Fuel types**

Power Station	Primary Fuel
<b>CEB Thermal</b>	
Sapugaskanda 1	Heavy Fuel
Sapugaskanda 2	Heavy Fuel
Kelanitissa Small Gas Turbines	Auto Diesel
GT 7 - Kelanitissa	Auto Diesel
Kelanitissa CCY	Naphtha or Diesel
Lakvijaya 1	Coal
Lakvijaya 2	Coal
Lakvijaya 3	Coal
Uthuru Janani	Heavy Fuel
Barge CEB	Heavy Fuel
KCCPS -2	Auto Diesel

Power Station	Primary Fuel
<b>Private Thermal</b>	
West Coast	Auto Diesel / Heavy Fuel

**Major Incidents reported during the day**

August 8, 2023

- 1) Matara-New Galle 132kV cct 02 tripped and A/R from both ends at 07:18hrs due to the operation of differential protection.
- 2) Ambalangoda-New Galle 132kV cct 02 tripped and A/R from both ends at 08:59hrs due to the operation of distance protection.