

Generation and Reservoirs Statistics

August 7, 2023



PUBLIC UTILITIES COMMISSION OF SRI LANKA

1. Daily Generation Mix in MWh

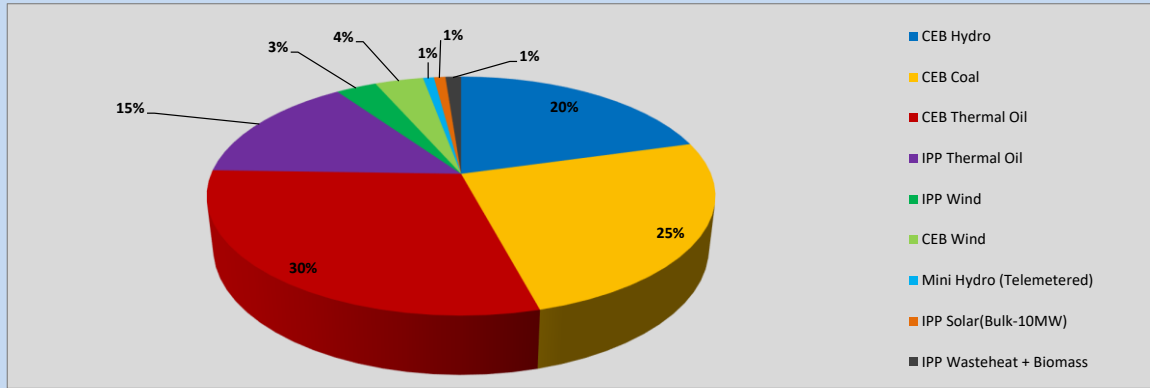


Table 01

CEB Hydro	8,835	MWh
CEB Coal	10,790	MWh
CEB Thermal Oil	12,704	MWh
IPP Thermal Oil	6,347	MWh
IPP Wind	1,328	MWh
CEB Wind	1,578	MWh
Mini Hydro (Telemetered)	351	MWh
IPP Solar (Bulk)	376	MWh
IPP Waste heat + Biomass	509	MWh
Total Generation (Excluding estimated figures)	42,818	MWh
* Estimated unserved energy	0	MWh
* Estimated Mini Hydro (Non telemetered)	3419	MWh
* Estimated IPP Solar PV (Bulk 1-10MW)	304	MWh
* Estimated Solar Roof Top PV	1650	MWh
Total Generation (Including estimated figures)	48,191	MWh

* Estimated figures of CEB generation report

2. Cumulative Dispatch

Following data excludes the contribution from roof top solar, non telemetered solar and mini hydro plants

Table 02 - Current Month

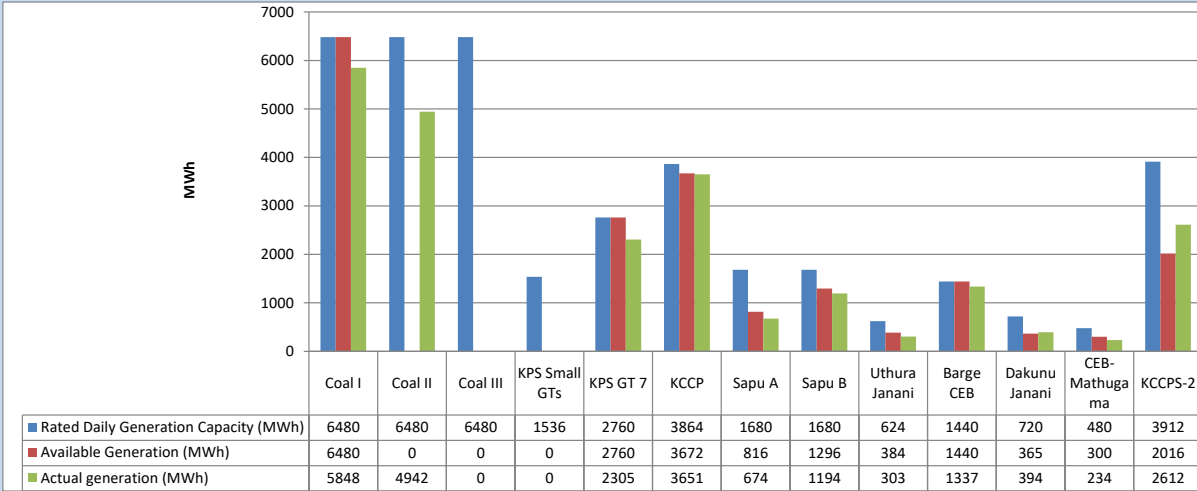
Category	Dispatch (GWh)	
CEB Hydro	55	19.12%
CEB Coal	78	27.45%
CEB Thermal Oil	82	28.61%
IPP Thermal	41	14.24%
SPP Wind	10	3.65%
CEB Wind	10	3.66%
Mini Hydro (Telemetered)	3	0.90%
IPP Solar (Bulk-10MW)	3	0.91%
IPP Waste heat + BMP	4	1.46%
Total	286	

Table 03 - Current Year

Category	Dispatch (GWh)	
CEB Hydro	2,101	24.86%
CEB Coal	3,328	39.37%
CEB Thermal Oil	1,386	16.39%
IPP Thermal	844	9.99%
SPP Wind	220	2.61%
CEB Wind	227	2.68%
Mini Hydro (Telemetered)	204	2.41%
IPP Solar (Bulk-10MW)	66	0.78%
IPP Waste heat	77	0.91%
Total	8,454	

3. CEB owned Thermal Plant Dispatch

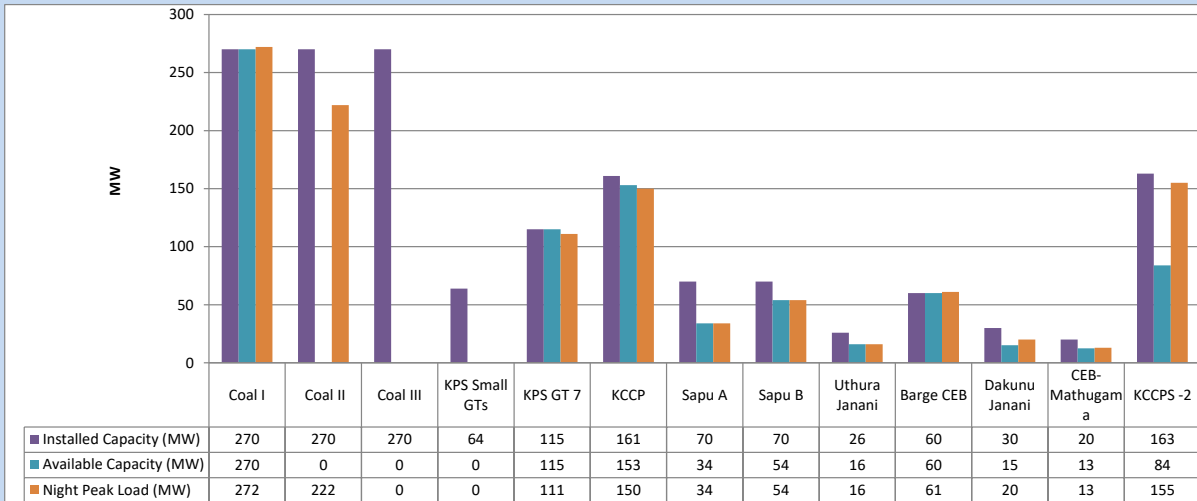
August 7, 2023



Available Generation is estimated based on plant availability at 6.00am on

August 8, 2023

4. CEB owned Thermal Plant Loading at the Night Peak

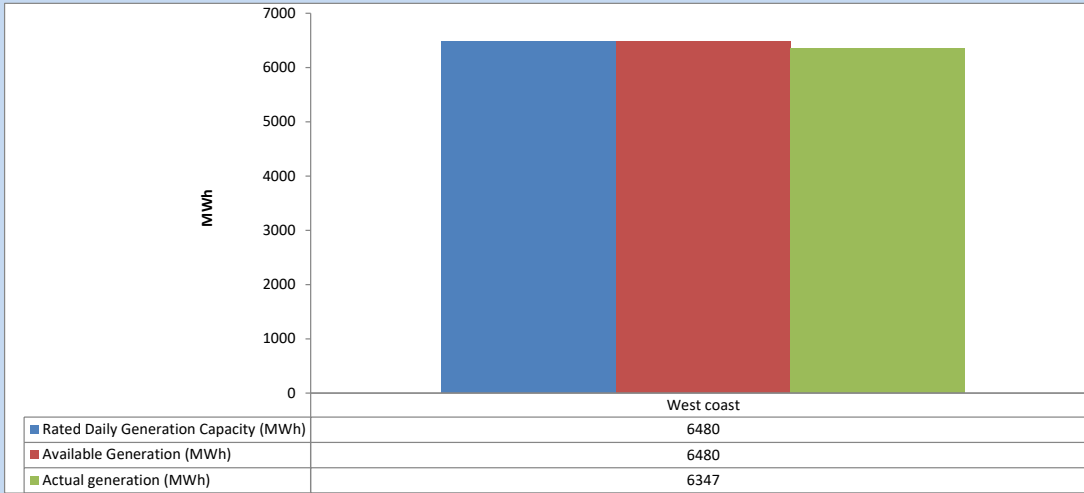


Plant availability is recorded at 6.00 am on

August 8, 2023

5. IPP owned Thermal Plant Dispatch

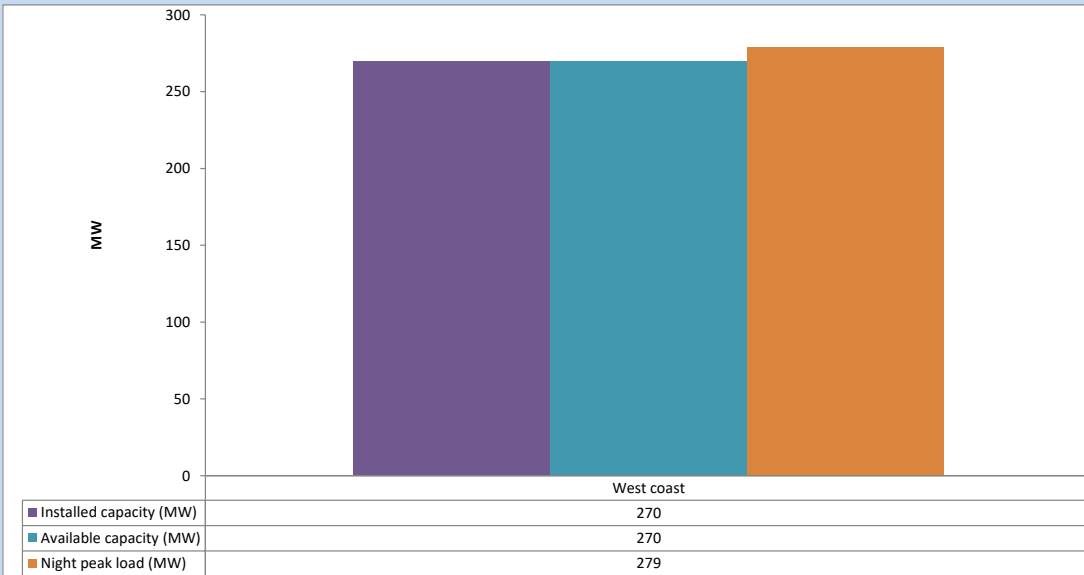
August 7, 2023



Available Generation is estimated based on plant availability at 6.00am on

August 8, 2023

6. IPP owned Thermal Plant Loading at the Night Peak

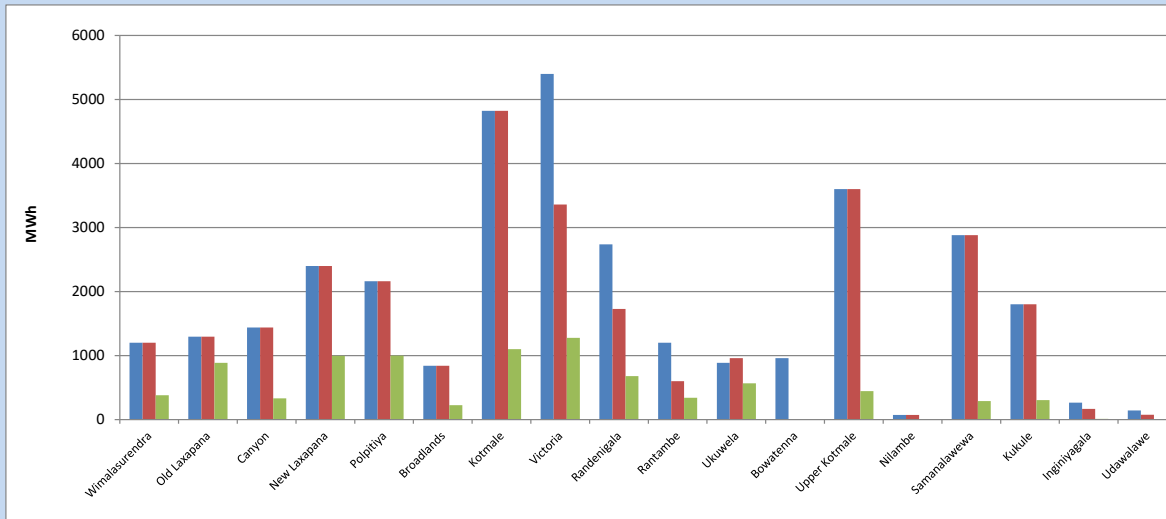


Plant availability is recorded at 6.00 am on

August 8, 2023

7. Major Hydro Plant Dispatch

August 7, 2023

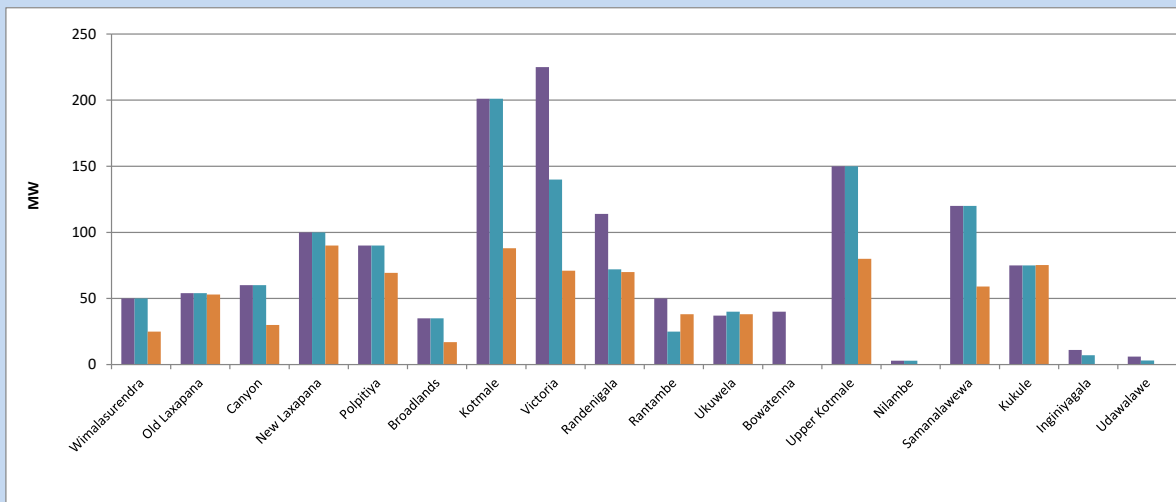


Available Generation is estimated based on plant availability at 6.00am on August 8, 2023
 Broadlands power plant is operating in the Commissioning Stage

August 8, 2023

8. Major Hydro Plant Loading at Night Peak

August 7, 2023



Plant availability is recorded at 6.00 am on August 8, 2023
 Broadlands power plant is operating in the Commissioning Stage

August 8, 2023

9. Summary of Major Plant performance

Table 04

Plant	Installed Capacity	Plant Availability	Night peak Load	Plant Dispatch
	(MW)	(MW)	(MW)	(MWh)
Wimalasurendra	50	50	25	381
Old Laxapana	54	54	53	887
Canyon	60	60	30	332
New Laxapana	100	100	90	995
Polpitiya	90	90	69	999
Broadlands	35	35	17	225
Kotmale	201	201	88	1,100
Victoria	225	140	71	1,277
Randenigala	114	72	70	680
Rantambe	50	25	38	340
Ukuwela	37	40	38	566
Bowatenna	40	0	0	0
Upper Kotmale	150	150	80	446
Nilambe	3	3	0	2
Samanalawewa	120	120	59	289
Kukule	75	75	75	304
Inginiyagala	11	7	0	12
Udawalawe	6	3	0	0
Puttalam Coal I	270	270	272	5,848
Puttalam Coal II	270	0	222	4,942
Puttalam Coal III	270	0	0	0
KPS Small GTs	64	0	0	0
KPS GT 7	115	115	111	2,305
KCCP	161	153	150	3,651
Sapugaskanda A	70	34	34	674
Sapugaskanda B	70	54	54	1,194
Uthura Janani	26	16	16	303
Barge CEB	60	60	61	1,337
CEB-Hambantota	30	15	20	394
CEB-Mathugama	20	13	13	234
ACE Matara	24	0	0	0
Asia Power	50	0	0	0
KCCPS -2	163	84	155	2,612
West Coast	270	270	279	6,347
Nothern Power	36	0	0	0
ACE Embilipitiya	93	0	0	0
Total	3,483	2,309	2,338	42,818

Plant availability is the availability recorded at 6 am on

August 8, 2023

10. Contribution to the Night Peak in MW

August 7, 2023

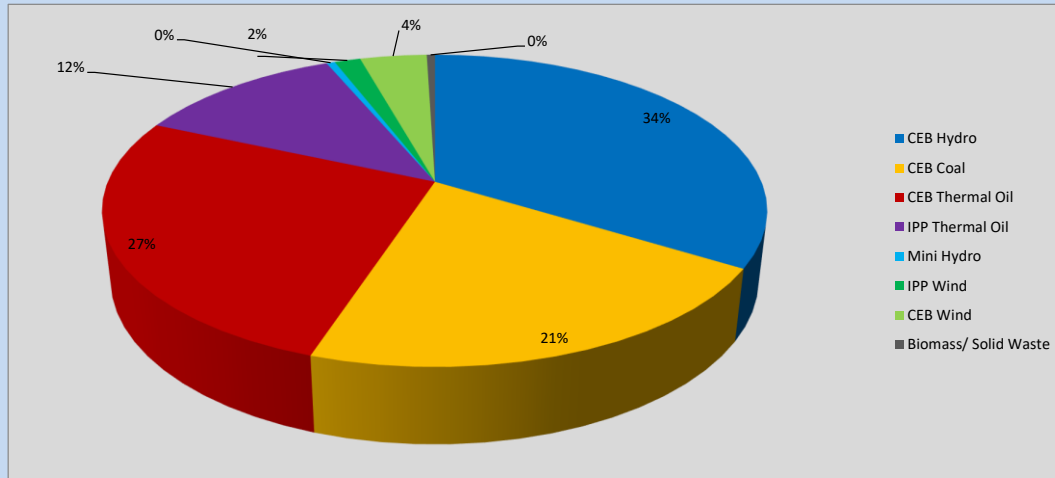


Table 05

CEB Hydro	781	MW
CEB Coal	494	MW
CEB Thermal Oil	614	MW
IPP Thermal Oil	279	MW
Mini Hydro (Telemetered)	11	MW
IPP Wind	34.9	MW
CEB Wind	89.7	MW
Biomass/ Solid Waste	11	MW

Recorded Peak Demand Data

Table 06

Night Peak*	2,315	MW
Day Peak Maximum Demand	2,047	MW
Day Peak Minimum Demand	1,744	MW
Off Peak Minimum Demand	1,249	MW

Above figures are excluding contribution from roof top solar, non telemetered solar and mini hydro plants

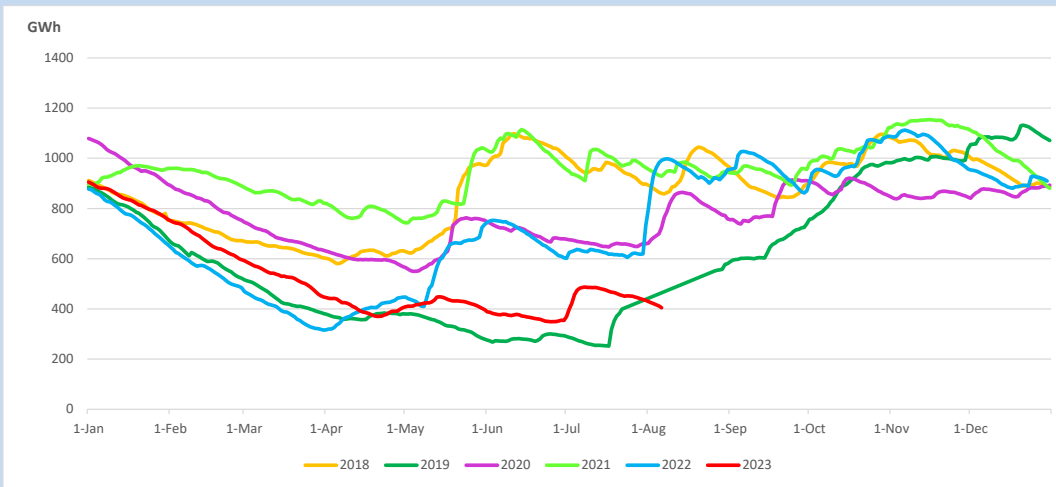
Reservoir Levels -

as at 06.00 Hr on August 8, 2023

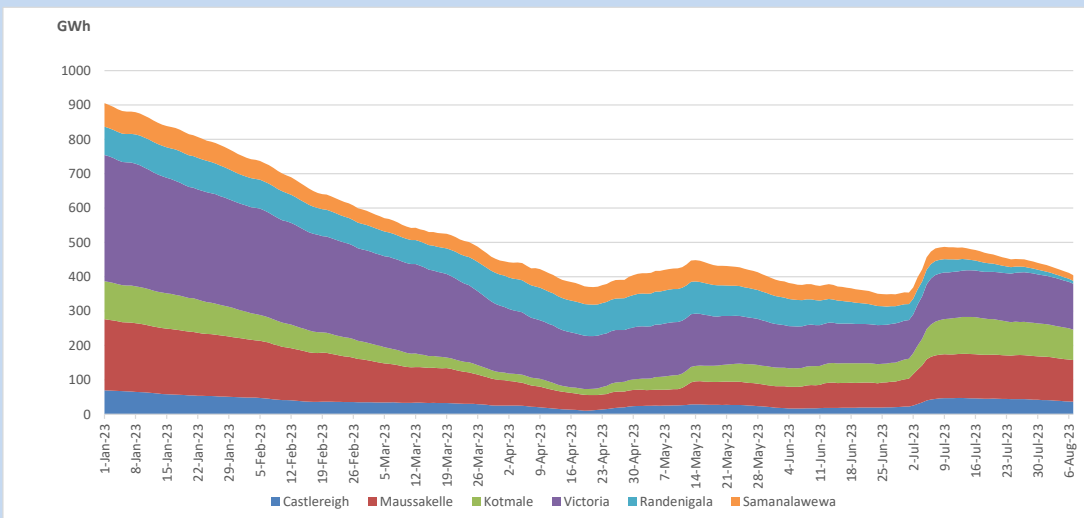


Total Reservoir Level 404.8 GWh
 % of Total capacity 33.6%

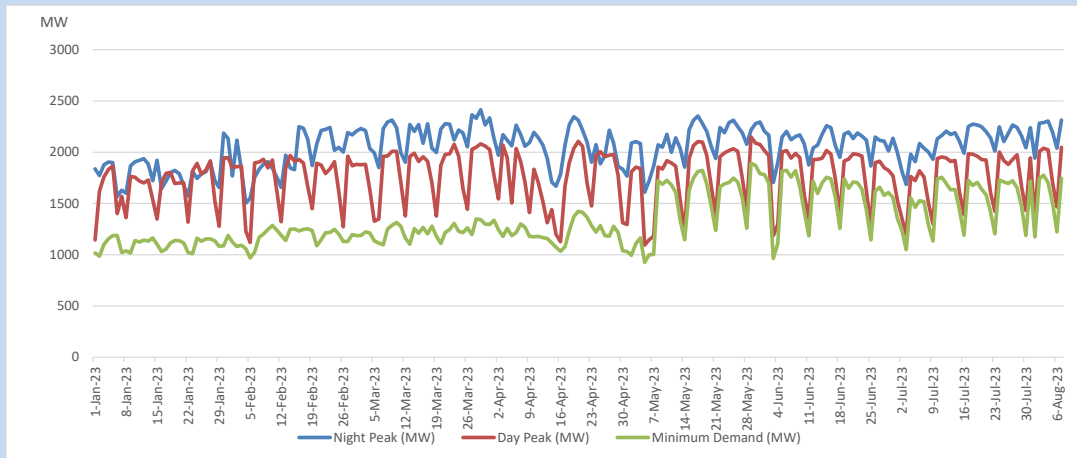
11. Comparison of Total Reservoir Storage Levels with Past Years



12. Variation of Major Hydro Reservoir Levels in the current year (GWh)



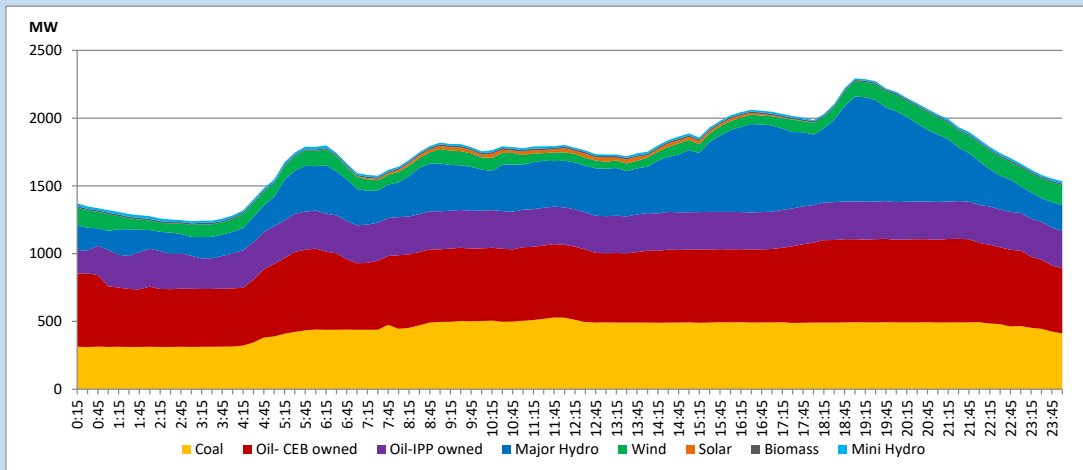
13. Variation of Demand during the current year



The above figures are excluding contribution from roof top solar, non telemetered solar and mini hydro plants

14. Daily Load Curve

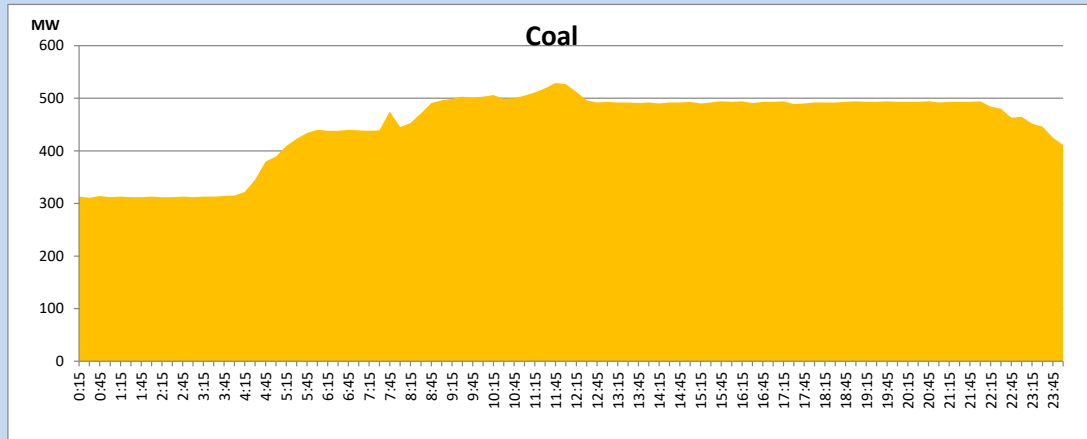
August 7, 2023



Solar and wind data is based on Telemetered Power Stations only

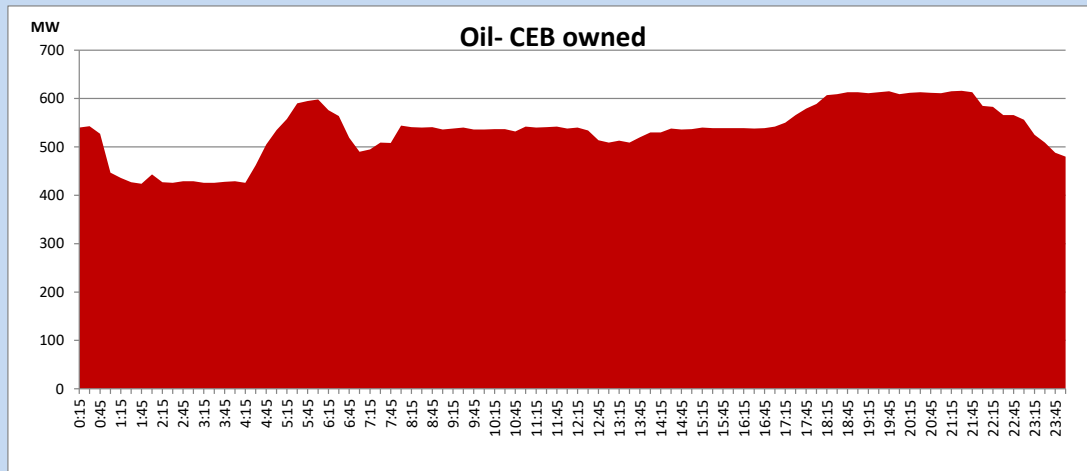
Coal Generation during

August 7, 2023



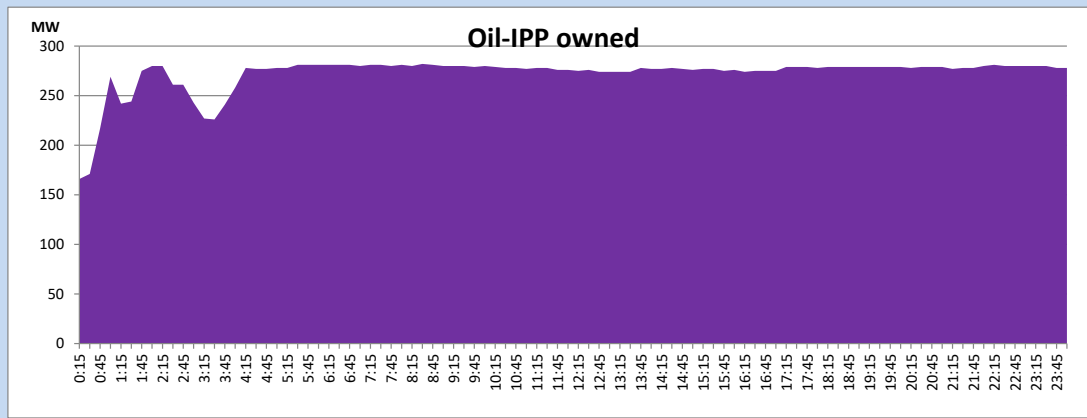
CEB Oil Plant Generation during

August 7, 2023



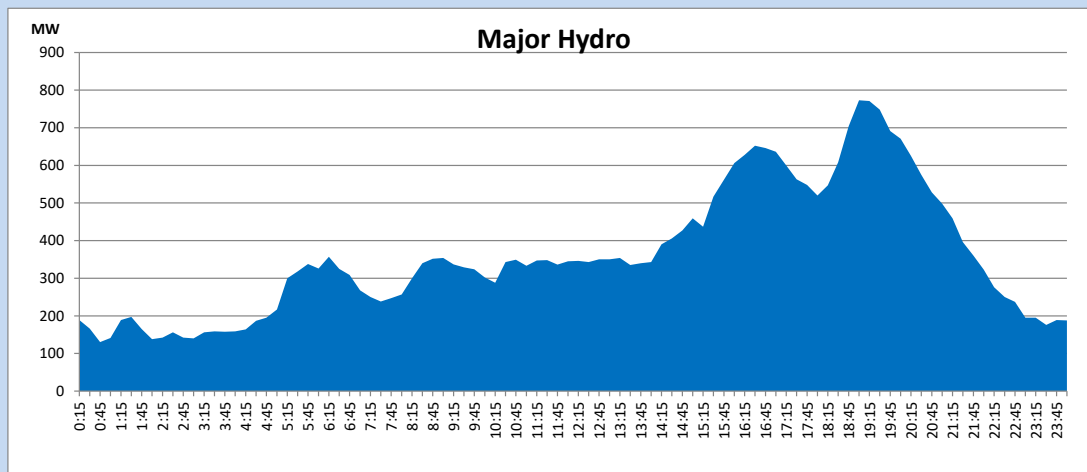
IPP Oil Plant Generation during

August 7, 2023



Major Hydro Generation during

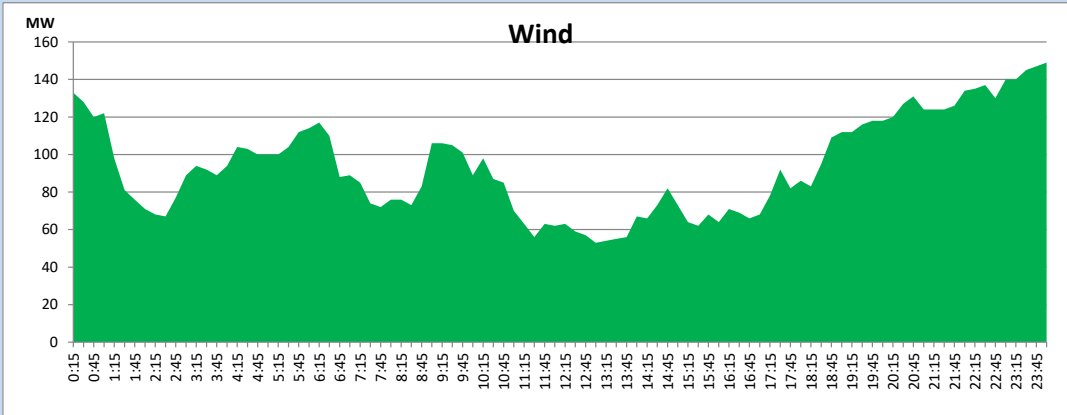
August 7, 2023



Wind Generation during

August 7, 2023

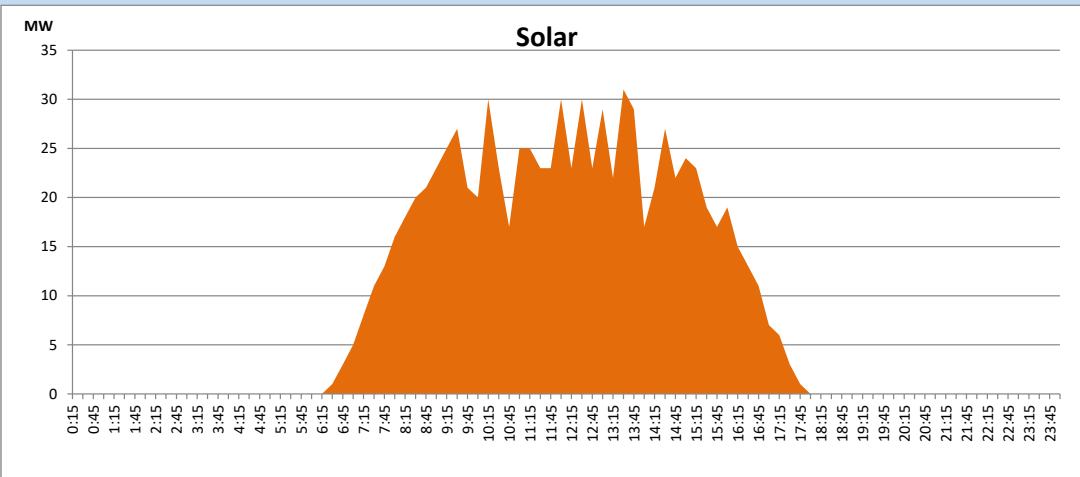
Based on Telemetered Power Stations only



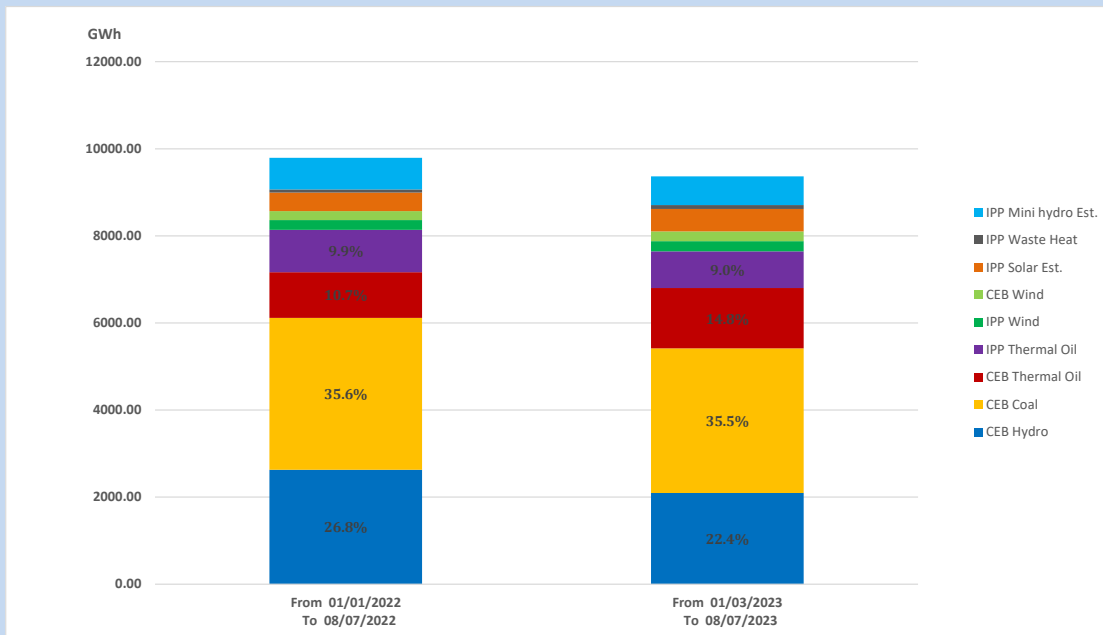
Solar Generation during

August 7, 2023

Based on Telemetered Power Stations only



15. Cumulative Dispatch Comparison with Last Year



Cumulative dispatch
 From 01/01/2022 To 08/07/2022
 From 01/01/2023 To 08/05/2023

9790 GWh
 9367 GWh

The above figures are including contribution from roof top solar, non telemetered solar and mini hydro plants

Thermal Plant Fuel types

Power Station	Primary Fuel
CEB Thermal	
Sapugaskanda 1	Heavy Fuel
Sapugaskanda 2	Heavy Fuel
Kelanitissa Small Gas Turbines	Auto Diesel
GT 7 - Kelanitissa	Auto Diesel
Kelanitissa CCY	Naphtha or Diesel
Lakvijaya 1	Coal
Lakvijaya 2	Coal
Lakvijaya 3	Coal
Uthuru Janani	Heavy Fuel
Barge CEB	Heavy Fuel
KCCPS -2	Auto Diesel

Power Station	Primary Fuel
Private Thermal	
West Coast	Auto Diesel / Heavy Fuel

Major Incidents reported during the day

August 7, 2023

- 1) Athu-Thul-N'Pol cct tripped ad A/R from all ends at 10:36hrs due to operation of distance protection, at the same time Dakunu Janani Plant tripped rejecting 15MW from the system. Dakunu Janani Plant resumed generation by 10:42hrs.
- 2) Mahiyanganaya T/F 01 tripped at 14:17 hrs without any indication and T/F energized at 17:47hrs.
- 3) LVPS Gen. 02 performed a force shutdown at 02:17hrs (08.08.23) due to suspected water leak of HP heater 03.