

Generation and Reservoirs Statistics

August 5, 2023



PUBLIC UTILITIES COMMISSION OF SRI LANKA

1. Daily Generation Mix in MWh

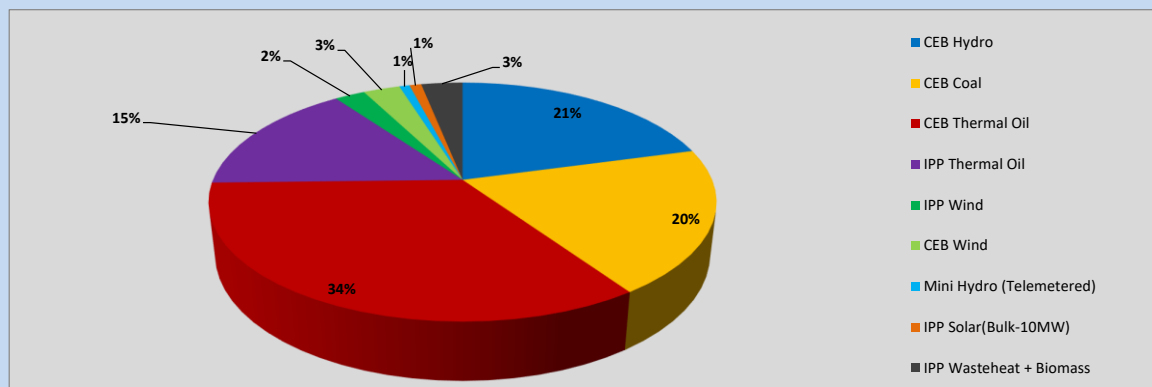


Table 01

CEB Hydro	8,544	MWh
CEB Coal	8,072	MWh
CEB Thermal Oil	14,069	MWh
IPP Thermal Oil	6,354	MWh
IPP Wind	949	MWh
CEB Wind	1,149	MWh
Mini Hydro (Telemetered)	322	MWh
IPP Solar (Bulk)	370	MWh
IPP Waste heat + Biomass	1294	MWh
Total Generation (Excluding estimated figures)	41,123	MWh
* Estimated unserved energy	0	MWh
* Estimated Mini Hydro (Non telemetered)	3448	MWh
* Estimated IPP Solar PV (Bulk 1-10MW)	304	MWh
* Estimated Solar Roof Top PV	1650	MWh
Total Generation (Including estimated figures)	46,525	MWh

* Estimated figures of CEB generation report

2. Cumulative Dispatch

Following data excludes the contribution from roof top solar, non telemetered solar and mini hydro plants

Table 02 - Current Month

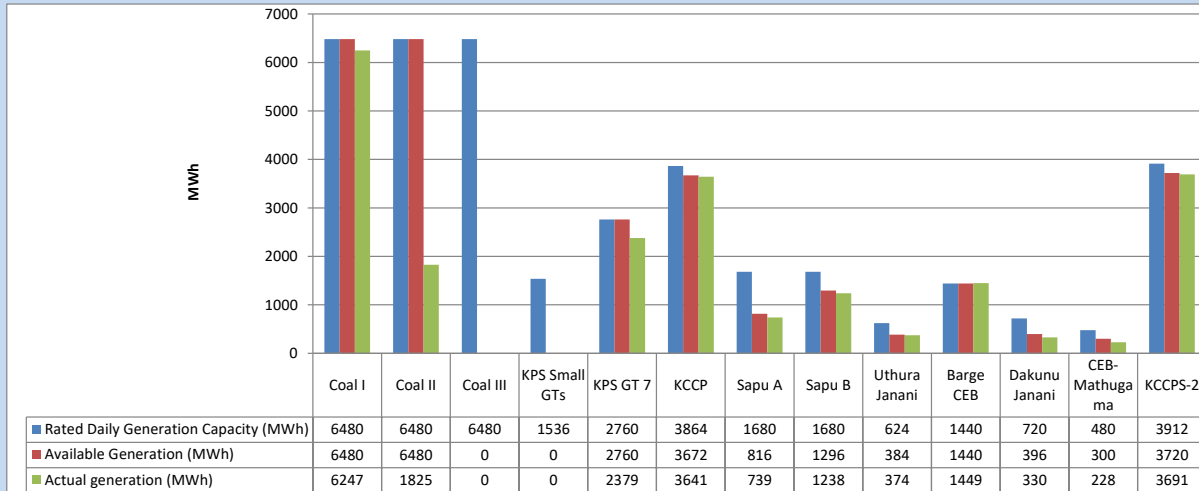
Category	Dispatch (GWh)	
CEB Hydro	38	18.52%
CEB Coal	60	28.87%
CEB Thermal Oil	55	26.80%
IPP Thermal	31	15.08%
SPP Wind	8	3.83%
CEB Wind	7	3.62%
Mini Hydro (Telemetered)	2	0.87%
IPP Solar (Bulk-10MW)	2	0.89%
IPP Waste heat + BMP	3	1.52%
Total	207	

Table 03 - Current Year

Category	Dispatch (GWh)	
CEB Hydro	2,085	24.90%
CEB Coal	3,309	39.52%
CEB Thermal Oil	1,359	16.23%
IPP Thermal	835	9.97%
SPP Wind	218	2.60%
CEB Wind	224	2.67%
Mini Hydro (Telemetered)	203	2.42%
IPP Solar (Bulk-10MW)	65	0.78%
IPP Waste heat	76	0.91%
Total	8,375	

3. CEB owned Thermal Plant Dispatch

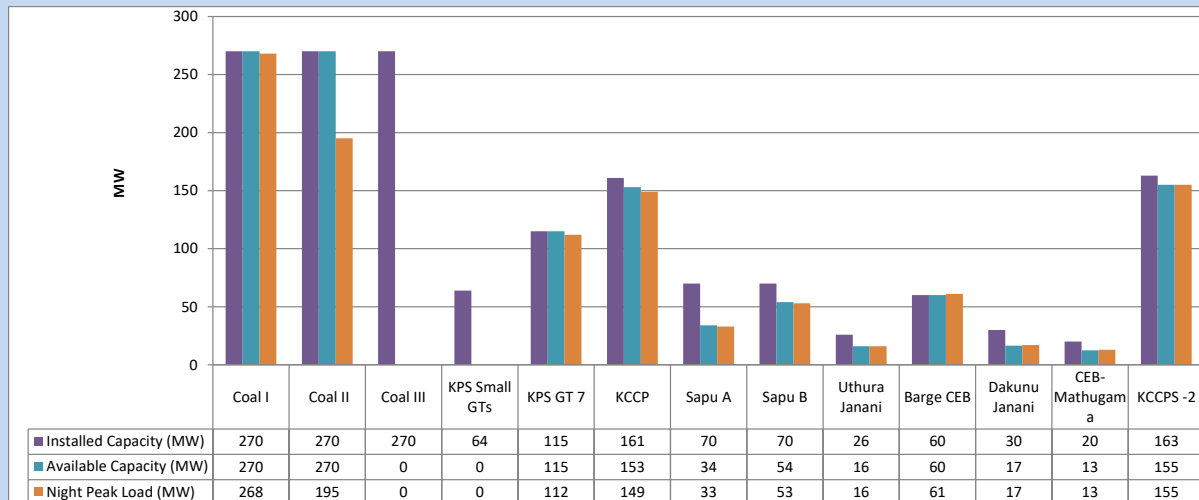
August 5, 2023



Available Generation is estimated based on plant availability at 6.00am on

August 6, 2023

4. CEB owned Thermal Plant Loading at the Night Peak

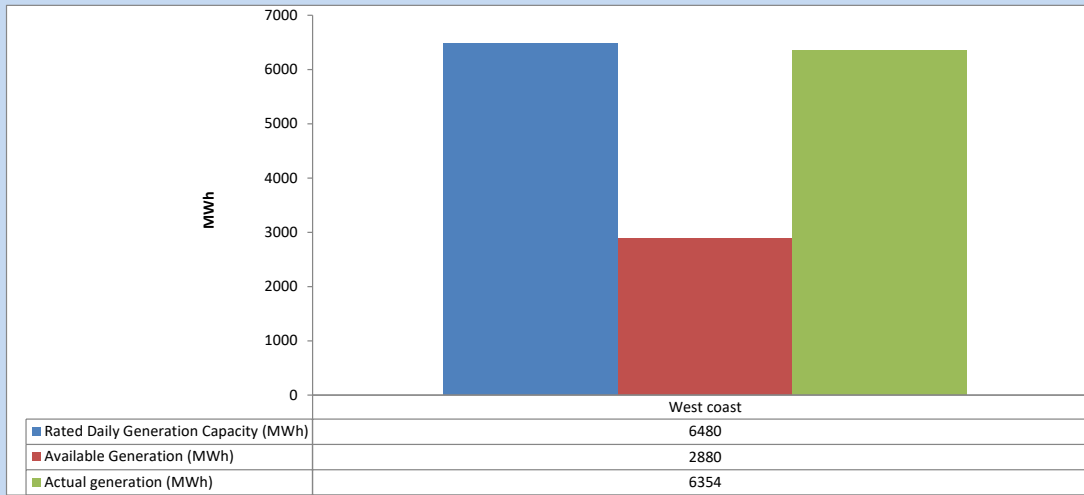


Plant availability is recorded at 6.00 am on

August 6, 2023

5. IPP owned Thermal Plant Dispatch

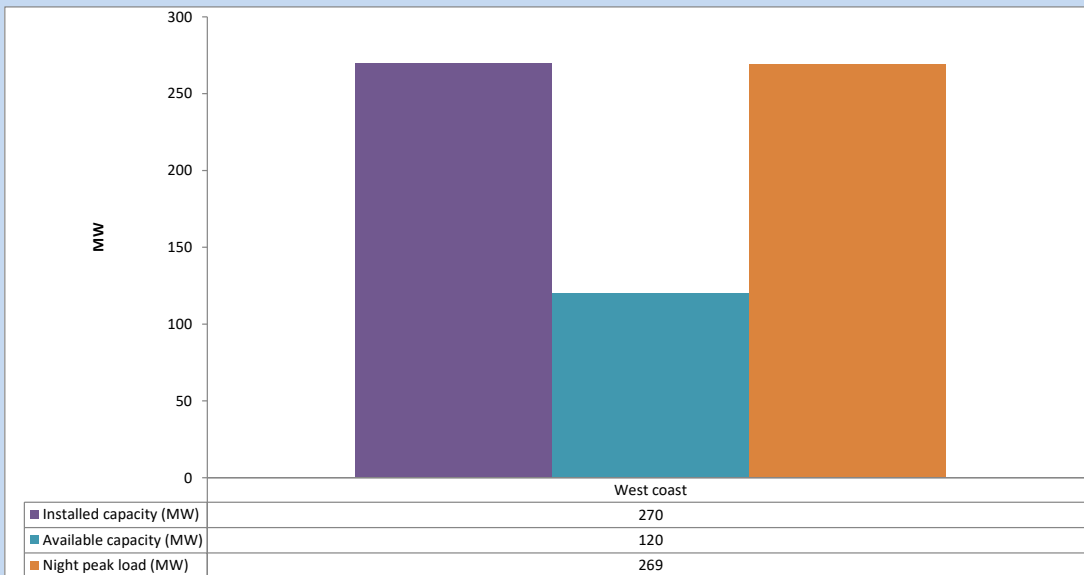
August 5, 2023



Available Generation is estimated based on plant availability at 6.00am on

August 6, 2023

6. IPP owned Thermal Plant Loading at the Night Peak

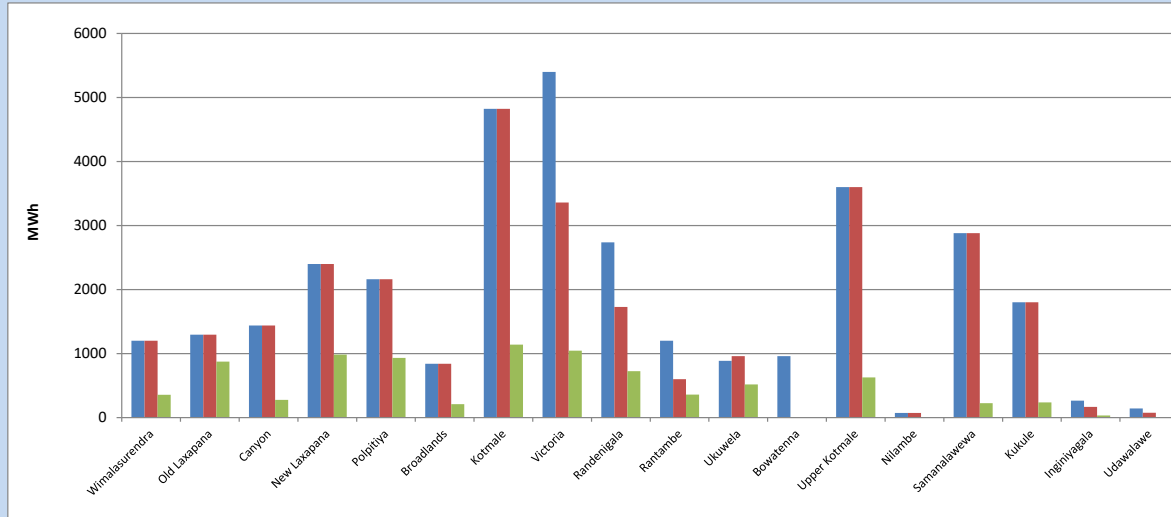


Plant availability is recorded at 6.00 am on

August 6, 2023

7. Major Hydro Plant Dispatch

August 5, 2023

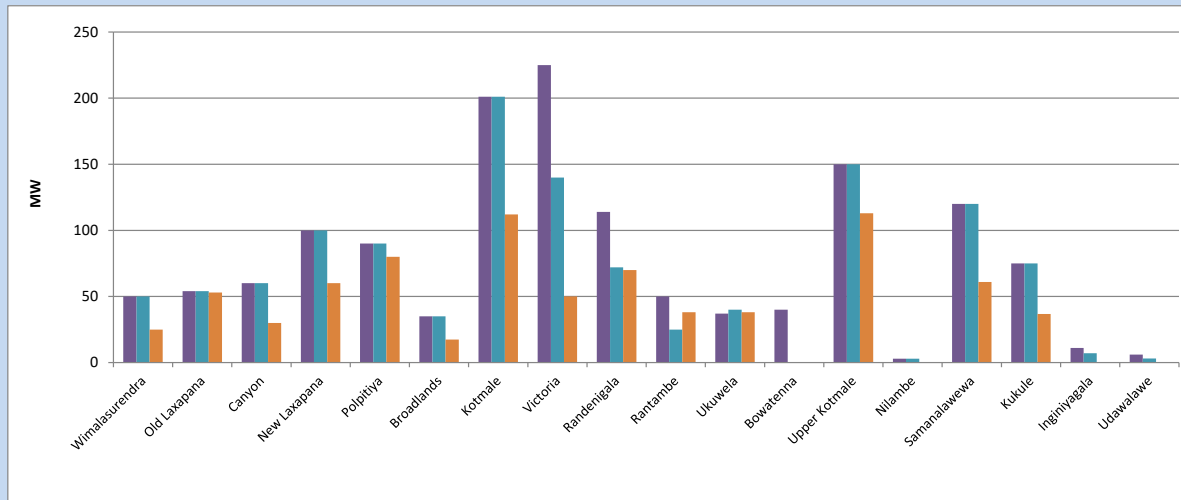


Available Generation is estimated based on plant availability at 6.00am on August 6, 2023
 Broadlands power plant is operating in the Commissioning Stage

August 6, 2023

8. Major Hydro Plant Loading at Night Peak

August 5, 2023



Plant availability is recorded at 6.00 am on August 6, 2023
 Broadlands power plant is operating in the Commissioning Stage

August 6, 2023

9. Summary of Major Plant performance

Table 04

Plant	Installed Capacity	Plant Availability	Night peak Load	Plant Dispatch
	(MW)	(MW)	(MW)	(MWh)
Wimalasurendra	50	50	25	356
Old Laxapana	54	54	53	875
Canyon	60	60	30	277
New Laxapana	100	100	60	983
Polpitiya	90	90	80	934
Broadlands	35	35	17	209
Kotmale	201	201	112	1,140
Victoria	225	140	50	1,046
Randenigala	114	72	70	726
Rantambe	50	25	38	358
Ukuwela	37	40	38	519
Bowatenna	40	0	0	0
Upper Kotmale	150	150	113	627
Nilambe	3	3	0	0
Samanalawewa	120	120	61	224
Kukule	75	75	37	236
Inginiyagala	11	7	0	34
Udawalawe	6	3	0	0
Puttalam Coal I	270	270	268	6,247
Puttalam Coal II	270	270	195	1,825
Puttalam Coal III	270	0	0	0
KPS Small GTs	64	0	0	0
KPS GT 7	115	115	112	2,379
KCCP	161	153	149	3,641
Sapugaskanda A	70	34	33	739
Sapugaskanda B	70	54	53	1,238
Uthura Janani	26	16	16	374
Barge CEB	60	60	61	1,449
CEB-Hambantota	30	17	17	330
CEB-Mathugama	20	13	13	228
ACE Matara	24	0	0	0
Asia Power	50	0	0	0
KCCPS -2	163	155	155	3,691
West Coast	270	120	269	6,354
Nothern Power	36	0	0	0
ACE Embilipitiya	93	0	0	0
Total	3,483	2,501	2,206	41,123

Plant availability is the availability recorded at 6 am on

August 6, 2023

10. Contribution to the Night Peak in MW

August 5, 2023

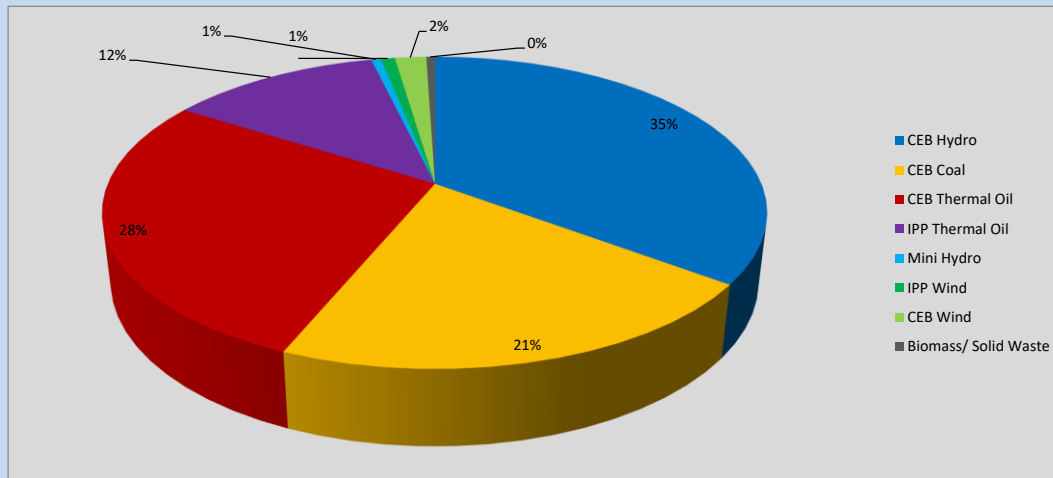


Table 05

CEB Hydro	771	MW
CEB Coal	463	MW
CEB Thermal Oil	609	MW
IPP Thermal Oil	269	MW
Mini Hydro (Telemetered)	12	MW
IPP Wind	17.8	MW
CEB Wind	40	MW
Biomass/ Solid Waste	11	MW

Recorded Peak Demand Data

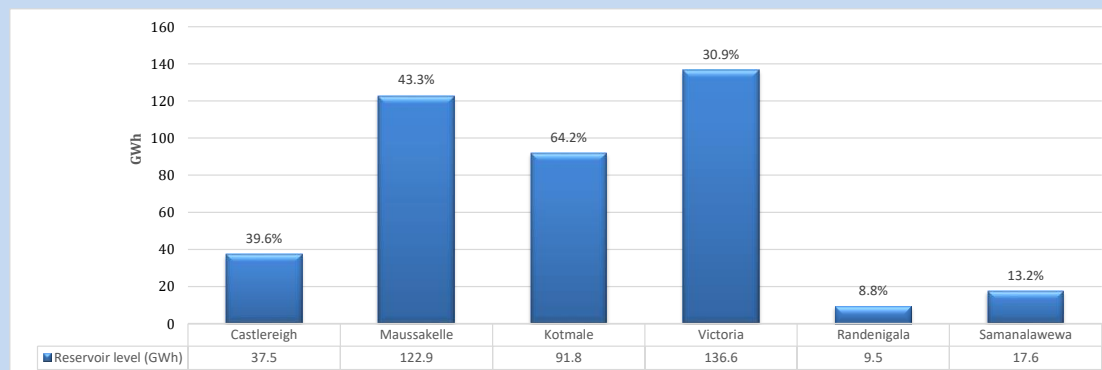
Table 06

Night Peak*	2,193	MW
Day Peak Maximum Demand	1,701	MW
Day Peak Minimum Demand	1,500	MW
Off Peak Minimum Demand	1,382	MW

Above figures are excluding contribution from roof top solar, non telemetered solar and mini hydro plants

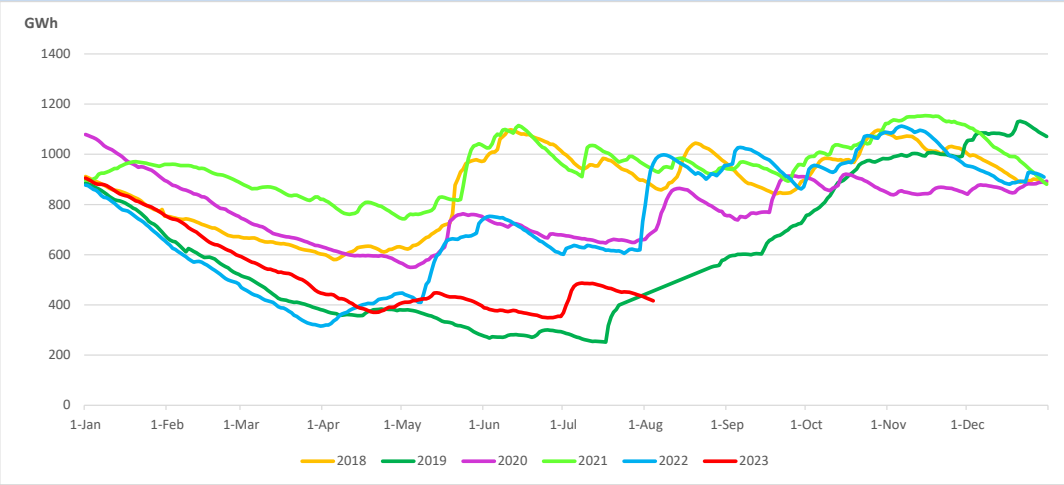
Reservoir Levels -

as at 06.00 Hr on August 6, 2023

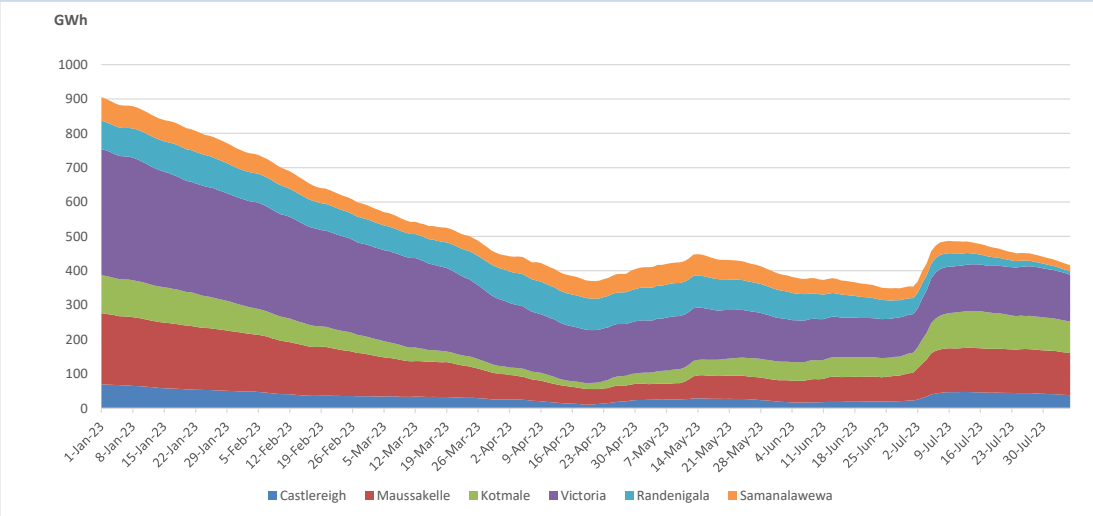


Total Reservoir Level 415.9 GWh
 % of Total capacity 34.5%

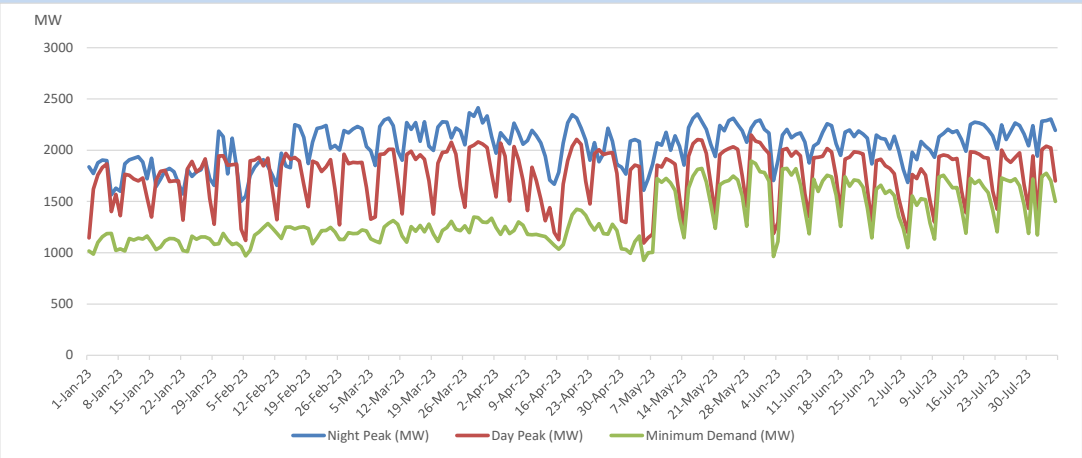
11. Comparison of Total Reservoir Storage Levels with Past Years



12. Variation of Major Hydro Reservoir Levels in the current year (GWh)



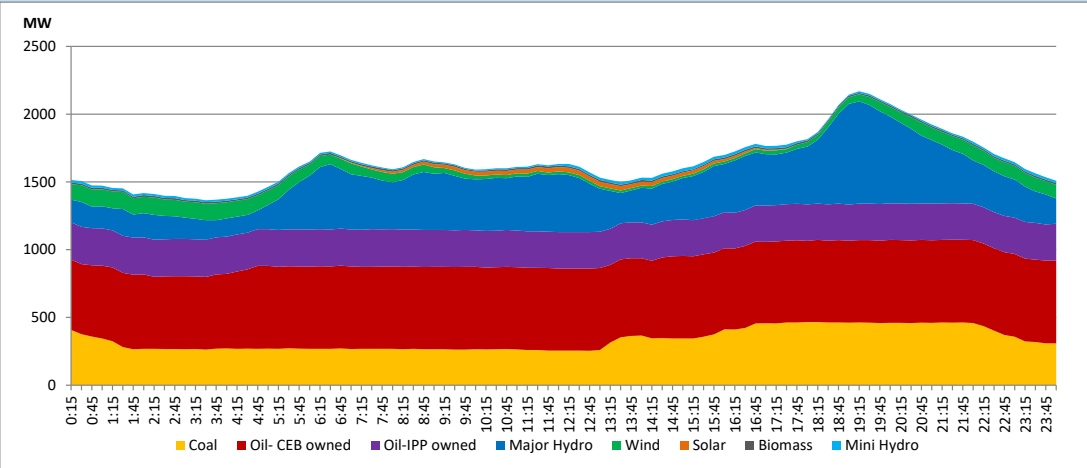
13. Variation of Demand during the current year



The above figures are excluding contribution from roof top solar, non telemetered solar and mini hydro plants

14. Daily Load Curve

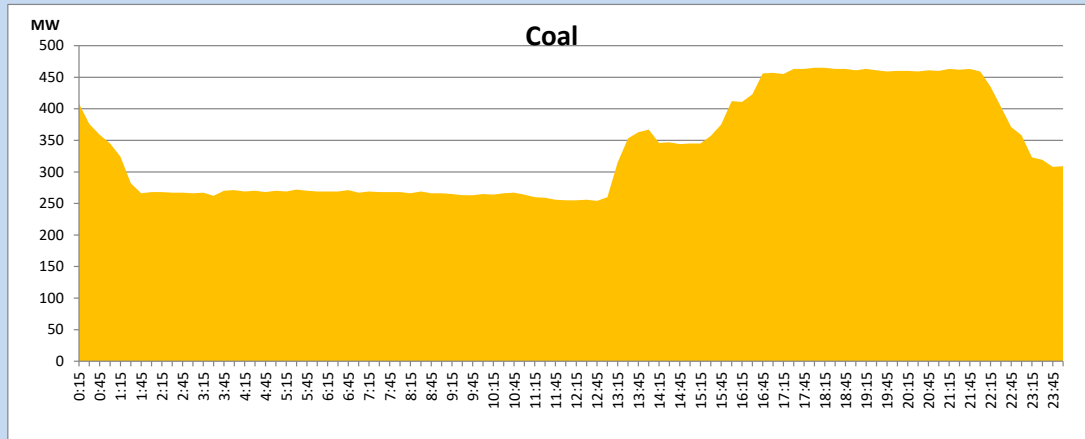
August 5, 2023



Solar and wind data is based on Telemetered Power Stations only

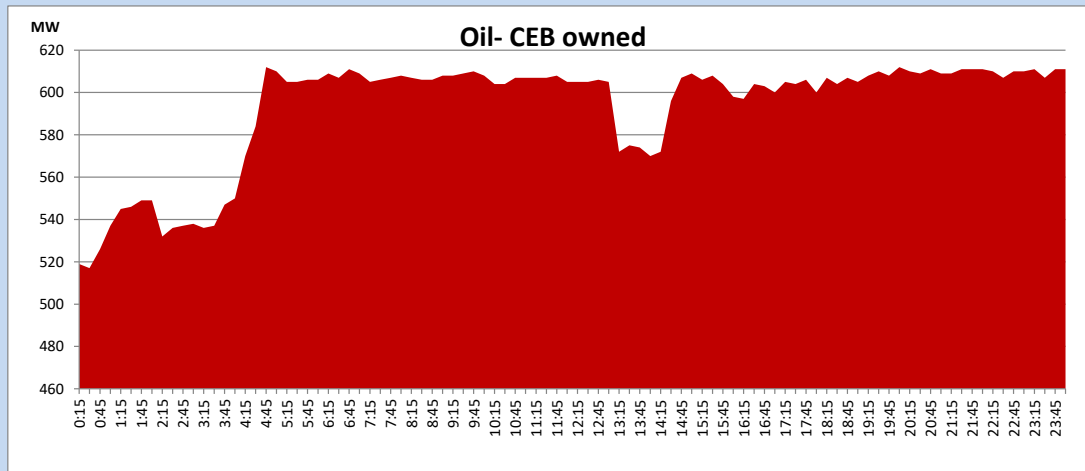
Coal Generation during

August 5, 2023



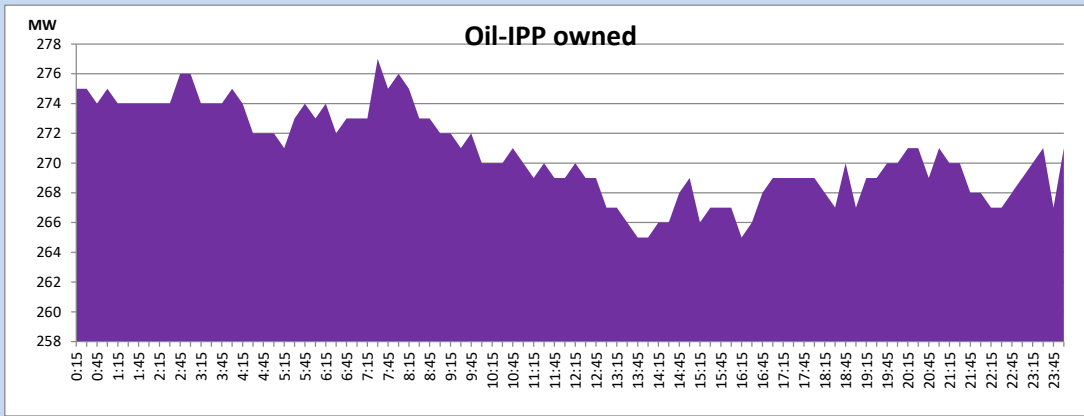
CEB Oil Plant Generation during

August 5, 2023



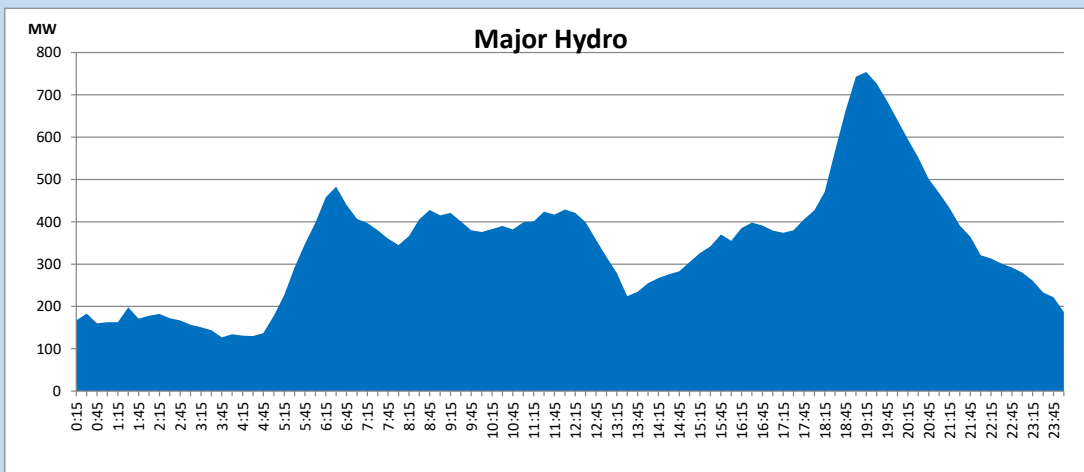
IPP Oil Plant Generation during

August 5, 2023



Major Hydro Generation during

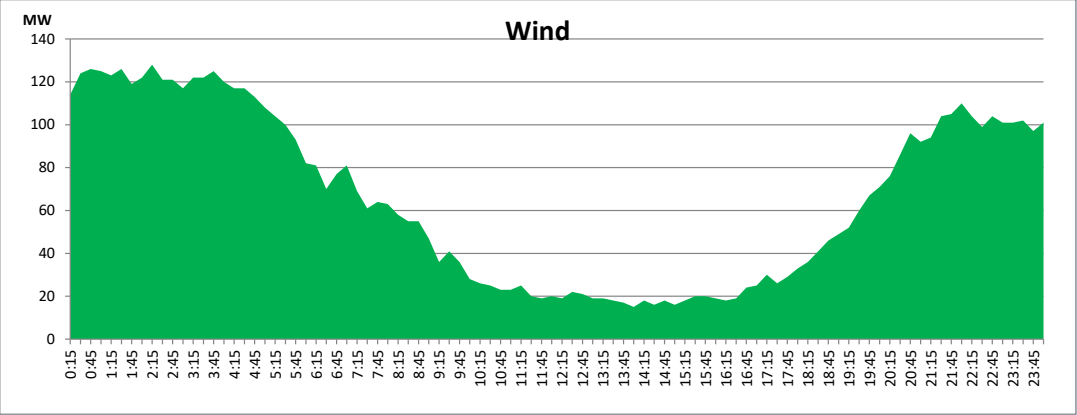
August 5, 2023



Wind Generation during

August 5, 2023

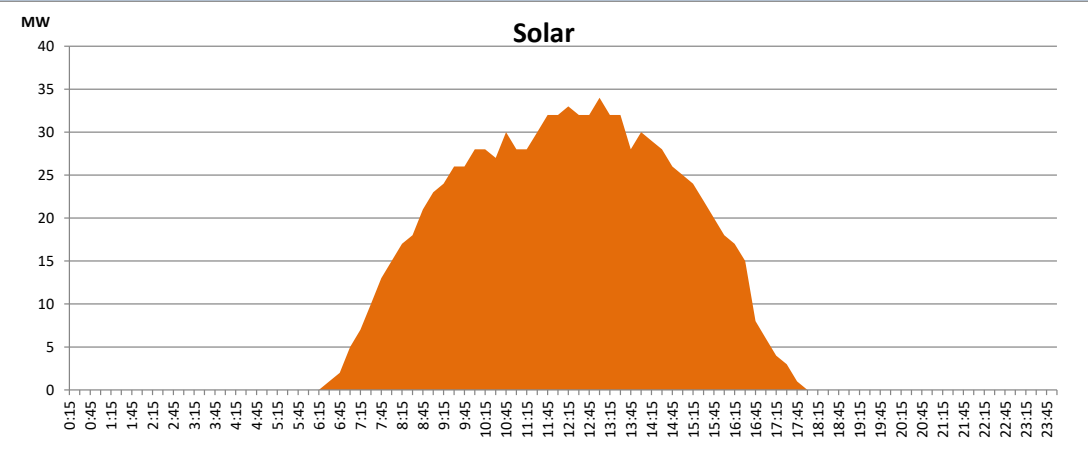
Based on Telemetered Power Stations only



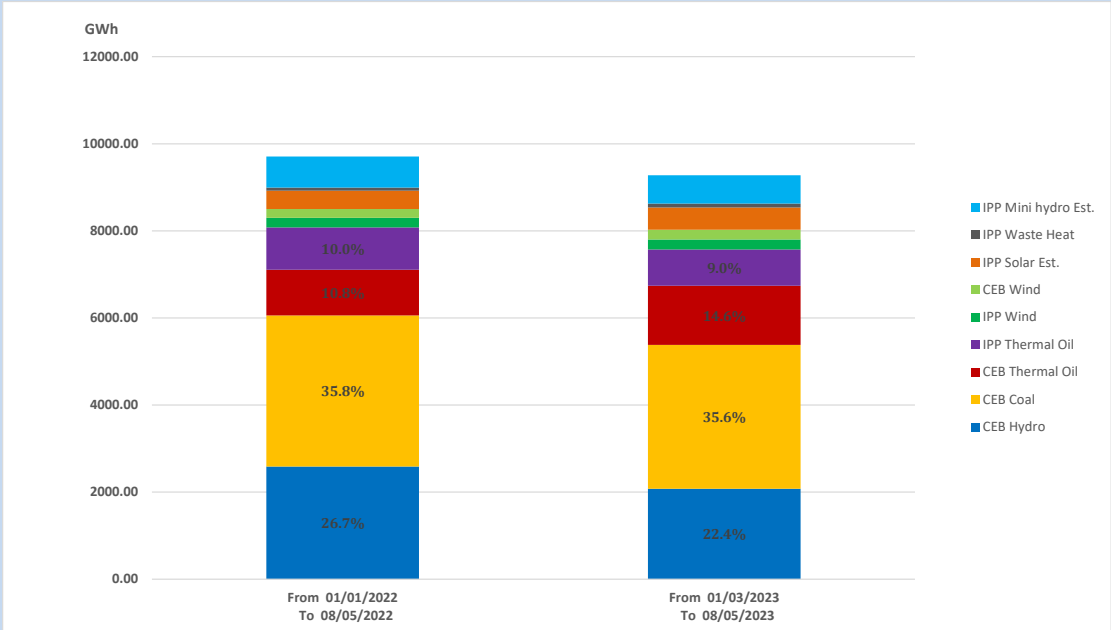
Solar Generation during

August 5, 2023

Based on Telemetered Power Stations only



15. Cumulative Dispatch Comparison with Last Year



Cumulative dispatch
 From 01/01/2022 To 08/05/2022
 From 01/01/2023 To 08/05/2023

9708 GWh
 9277 GWh

The above figures are including contribution from roof top solar, non telemetered solar and mini hydro plants

Thermal Plant Fuel types

Power Station	Primary Fuel
CEB Thermal	
Sapugaskanda 1	Heavy Fuel
Sapugaskanda 2	Heavy Fuel
Kelanitissa Small Gas Turbines	Auto Diesel
GT 7 - Kelanitissa	Auto Diesel
Kelanitissa CCY	Naphtha or Diesel
Lakvijaya 1	Coal
Lakvijaya 2	Coal
Lakvijaya 3	Coal
Uthuru Janani	Heavy Fuel
Barge CEB	Heavy Fuel
KCCPS -2	Auto Diesel

Power Station	Primary Fuel
Private Thermal	
West Coast	Auto Diesel / Heavy Fuel

Major Incidents reported during the day

August 5, 2023

- 1) Puttalam 132/33kV T/F 01 and T/F 03 tripped only from 33kV side along with 33kV B/S CB at 9:37hrs, causing feeder 01, 02, 03, 04 and the wind feeder to be dead. Both T/Fs and all affected feeders except feeder 03 were restored by 10:15 hrs. Puttalam feeder 03 was restored at 19:12hrs.
- 2) LVPS Unit 02 synchronized at 13:04hrs and reached 195MW(net) (i.e full load of 03 coal mills) at 17:35hrs.