

# Generation and Reservoirs Statistics

August 4, 2023



PUBLIC UTILITIES COMMISSION OF SRI LANKA

## 1. Daily Generation Mix in MWh

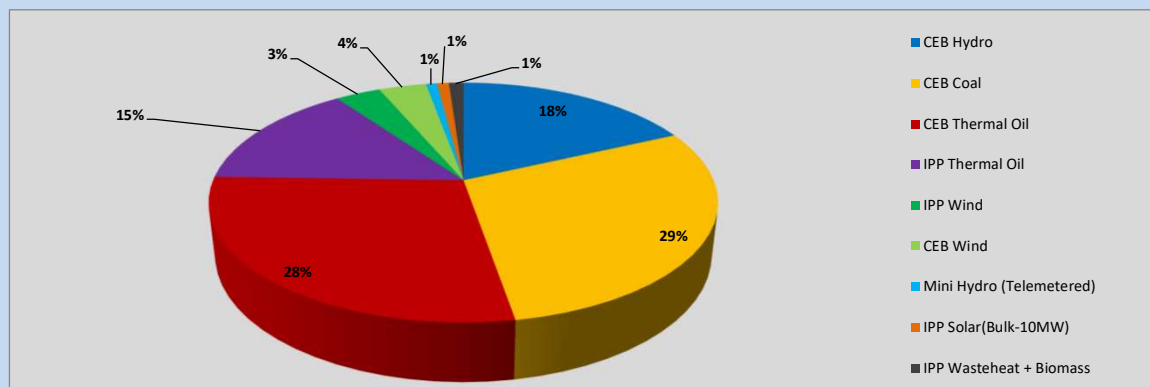


Table 01

CEB Hydro	7,937	MWh
CEB Coal	12,757	MWh
CEB Thermal Oil	12,335	MWh
IPP Thermal Oil	6,413	MWh
IPP Wind	1,501	MWh
CEB Wind	1,576	MWh
Mini Hydro (Telemetered)	365	MWh
IPP Solar (Bulk)	395	MWh
IPP Waste heat + Biomass	485	MWh
<b>Total Generation (Excluding estimated figures)</b>	<b>43,764</b>	<b>MWh</b>
* Estimated unserved energy	0	MWh
* Estimated Mini Hydro (Non telemetered)	3405	MWh
* Estimated IPP Solar PV (Bulk 1-10MW)	304	MWh
* Estimated Solar Roof Top PV	1650	MWh
<b>Total Generation (Including estimated figures)</b>	<b>49,123</b>	<b>MWh</b>

\* Estimated figures of CEB generation report

## 2. Cumulative Dispatch

Following data excludes the contribution from roof top solar, non telemetered solar and mini hydro plants

Table 02 - Current Month

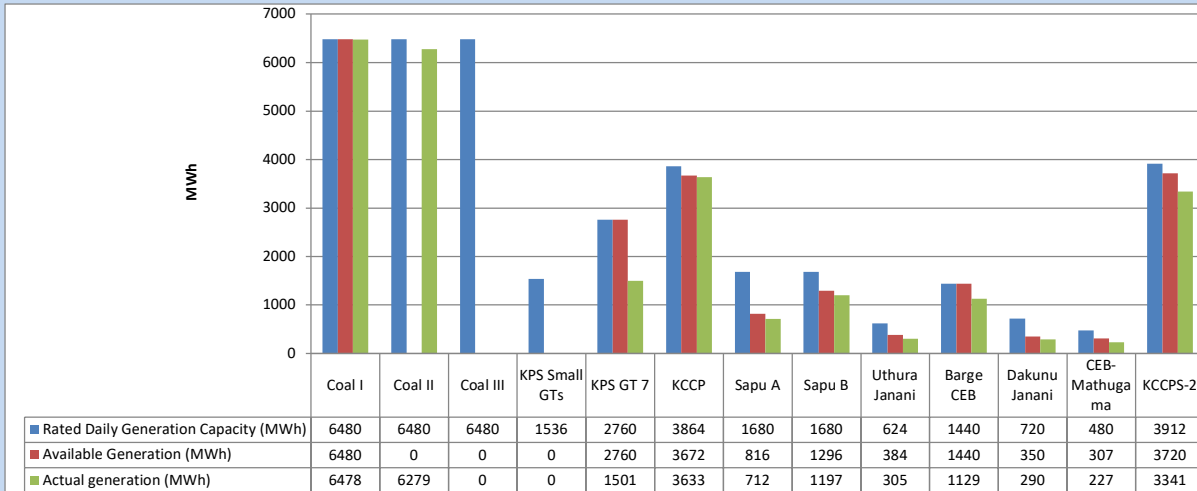
Category	Dispatch (GWh)	
CEB Hydro	30	17.96%
CEB Coal	52	31.17%
CEB Thermal Oil	41	24.96%
IPP Thermal	25	14.98%
SPP Wind	7	4.21%
CEB Wind	6	3.82%
Mini Hydro (Telemetered)	1	0.89%
IPP Solar (Bulk-10MW)	1	0.88%
IPP Waste heat + BMP	2	1.12%
<b>Total</b>	<b>165</b>	

Table 03 - Current Year

Category	Dispatch (GWh)	
CEB Hydro	2,076	24.92%
CEB Coal	3,301	39.62%
CEB Thermal Oil	1,345	16.14%
IPP Thermal	829	9.94%
SPP Wind	217	2.60%
CEB Wind	223	2.67%
Mini Hydro (Telemetered)	203	2.43%
IPP Solar (Bulk-10MW)	65	0.78%
IPP Waste heat	75	0.90%
<b>Total</b>	<b>8,333</b>	

### 3. CEB owned Thermal Plant Dispatch

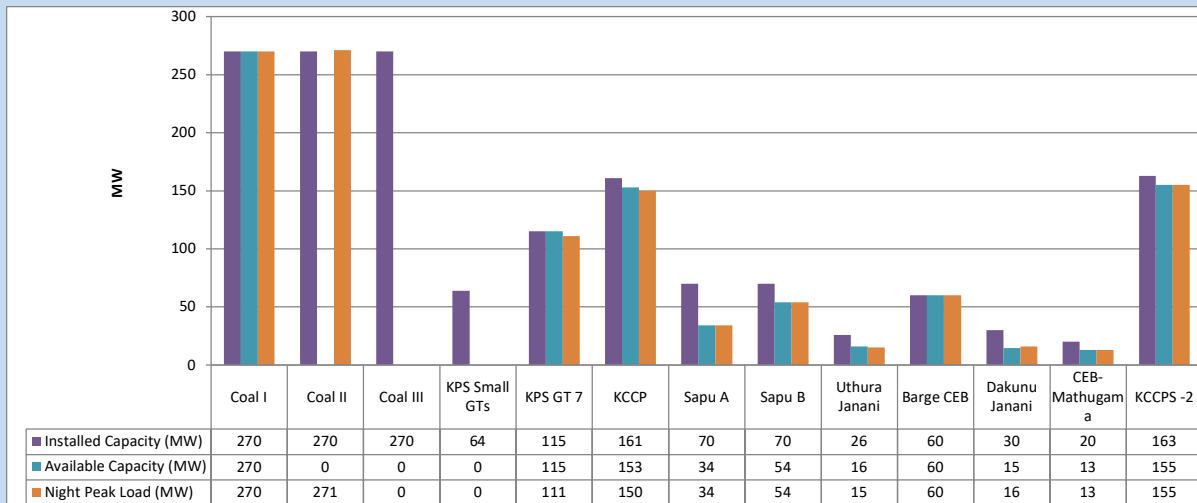
August 4, 2023



Available Generation is estimated based on plant availability at 6.00am on

August 5, 2023

### 4. CEB owned Thermal Plant Loading at the Night Peak



Plant availability is recorded at 6.00 am on

August 5, 2023

## 5. IPP owned Thermal Plant Dispatch

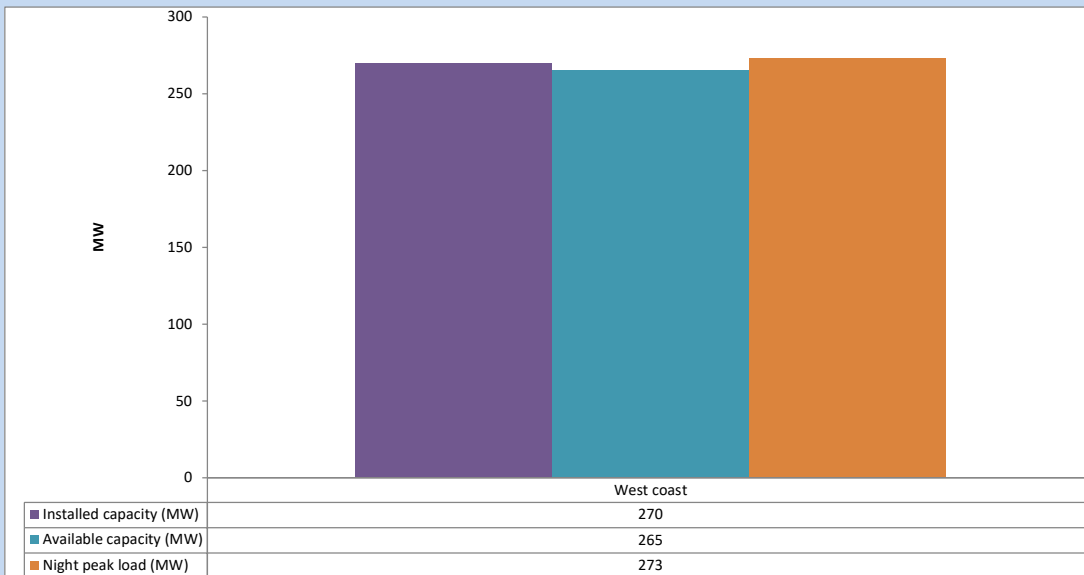
August 4, 2023



Available Generation is estimated based on plant availability at 6.00am on

August 5, 2023

## 6. IPP owned Thermal Plant Loading at the Night Peak

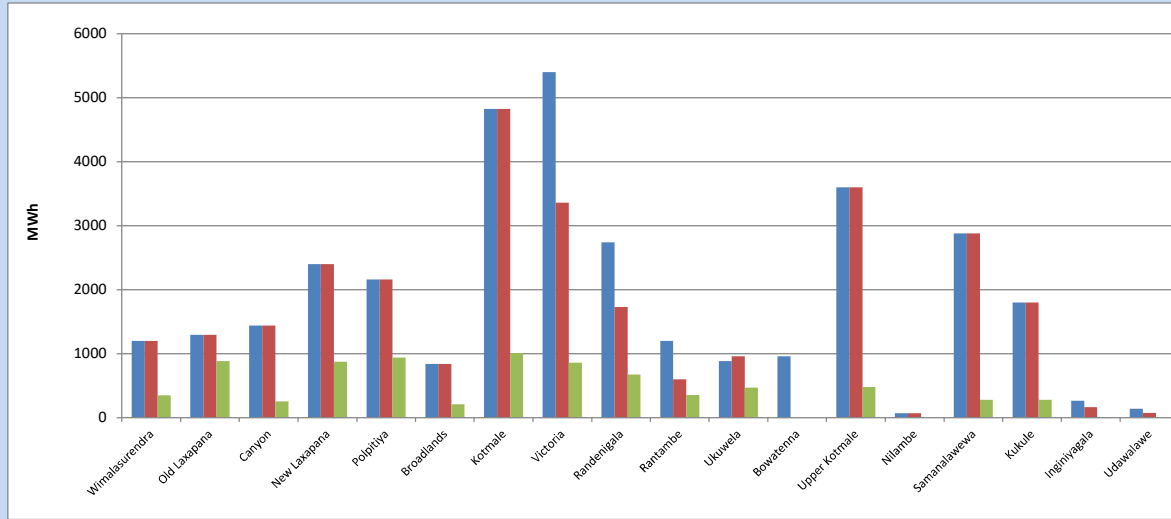


Plant availability is recorded at 6.00 am on

August 5, 2023

### 7. Major Hydro Plant Dispatch

August 4, 2023

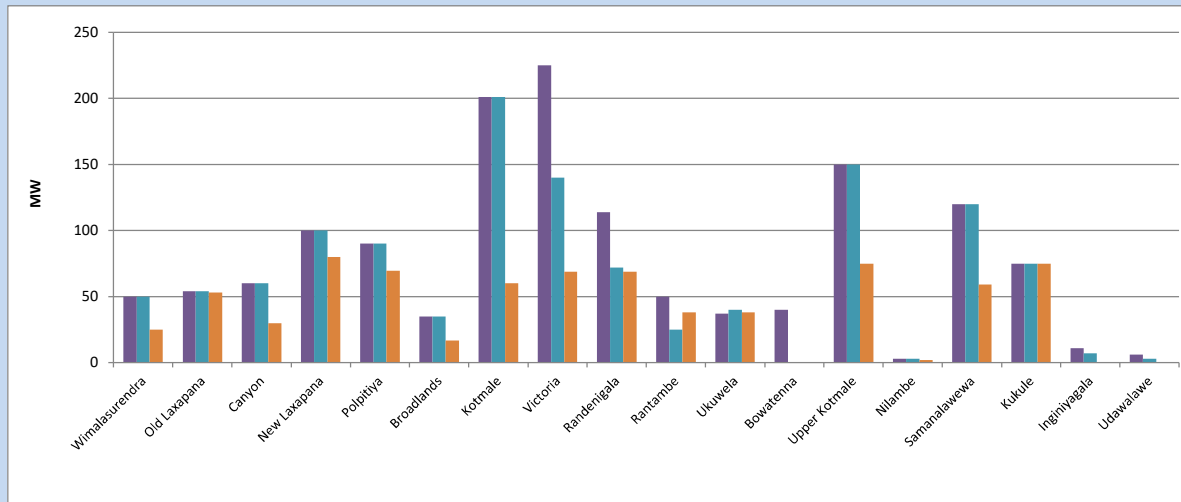


Available Generation is estimated based on plant availability at 6.00am on August 5, 2023  
 Broadlands power plant is operating in the Commissioning Stage

August 5, 2023

### 8. Major Hydro Plant Loading at Night Peak

August 4, 2023



Plant availability is recorded at 6.00 am on August 5, 2023  
 Broadlands power plant is operating in the Commissioning Stage

August 5, 2023

## 9. Summary of Major Plant performance

**Table 04**

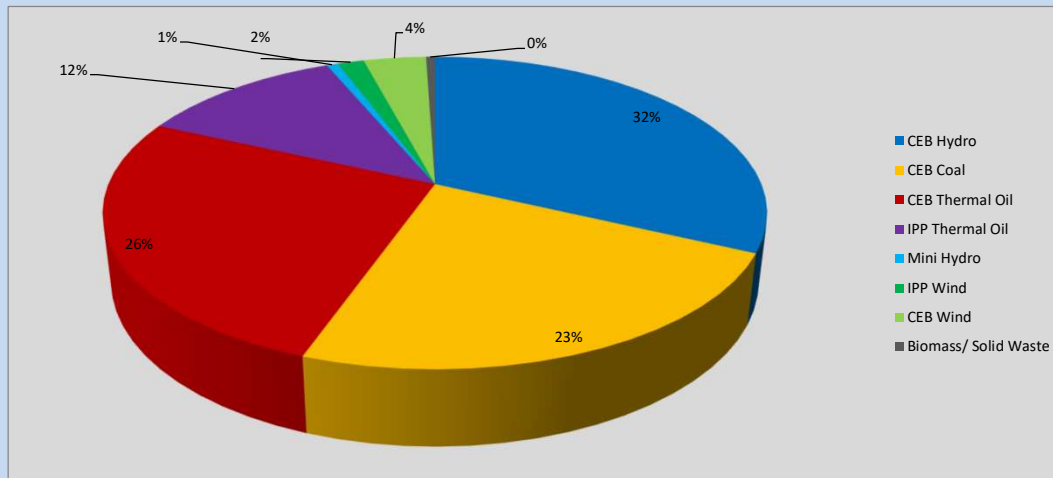
Plant	Installed Capacity	Plant Availability	Night peak Load	Plant Dispatch
	(MW)	(MW)	(MW)	(MWh)
Wimalasurendra	50	50	25	349
Old Laxapana	54	54	53	887
Canyon	60	60	30	257
New Laxapana	100	100	80	877
Polpitiya	90	90	70	939
Broadlands	35	35	17	212
Kotmale	201	201	60	1,010
Victoria	225	140	69	861
Randenigala	114	72	69	675
Rantambe	50	25	38	354
Ukuwela	37	40	38	469
Bowatenna	40	0	0	0
Upper Kotmale	150	150	75	480
Nilambe	3	3	2	0
Samanalawewa	120	120	59	280
Kukule	75	75	75	279
Inginiyagala	11	7	0	8
Udawalawe	6	3	0	0
Puttalam Coal I	270	270	270	6,478
Puttalam Coal II	270	0	271	6,279
Puttalam Coal III	270	0	0	0
KPS Small GTs	64	0	0	0
KPS GT 7	115	115	111	1,501
KCCP	161	153	150	3,633
Sapugaskanda A	70	34	34	712
Sapugaskanda B	70	54	54	1,197
Uthura Janani	26	16	15	305
Barge CEB	60	60	60	1,129
CEB-Hambantota	30	15	16	290
CEB-Mathugama	20	13	13	227
ACE Matara	24	0	0	0
Asia Power	50	0	0	0
KCCPS -2	163	155	155	3,341
West Coast	270	265	273	6,413
Nothern Power	36	0	0	0
ACE Embilipitiya	93	0	0	0
<b>Total</b>	<b>3,483</b>	<b>2,375</b>	<b>2,328</b>	<b>43,764</b>

Plant availability is the availability recorded at 6 am on

August 5, 2023

## 10. Contribution to the Night Peak in MW

August 4, 2023



**Table 05**

CEB Hydro	737	MW
CEB Coal	541	MW
CEB Thermal Oil	608	MW
IPP Thermal Oil	273	MW
Mini Hydro (Telemetered)	15	MW
IPP Wind	35.3	MW
CEB Wind	83.8	MW
Biomass/ Solid Waste	12	MW

### Recorded Peak Demand Data

**Table 06**

Night Peak*	2,305	MW
Day Peak Maximum Demand	2,022	MW
Day Peak Minimum Demand	1,703	MW
Off Peak Minimum Demand	1,373	MW

Above figures are excluding contribution from roof top solar, non telemetered solar and mini hydro plants

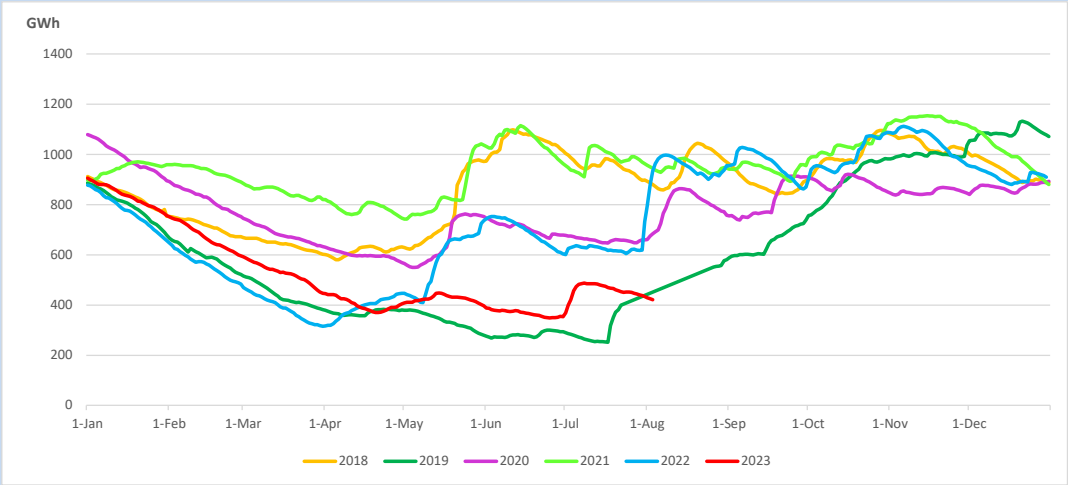
### Reservoir Levels -

as at 06.00 Hr on August 5, 2023

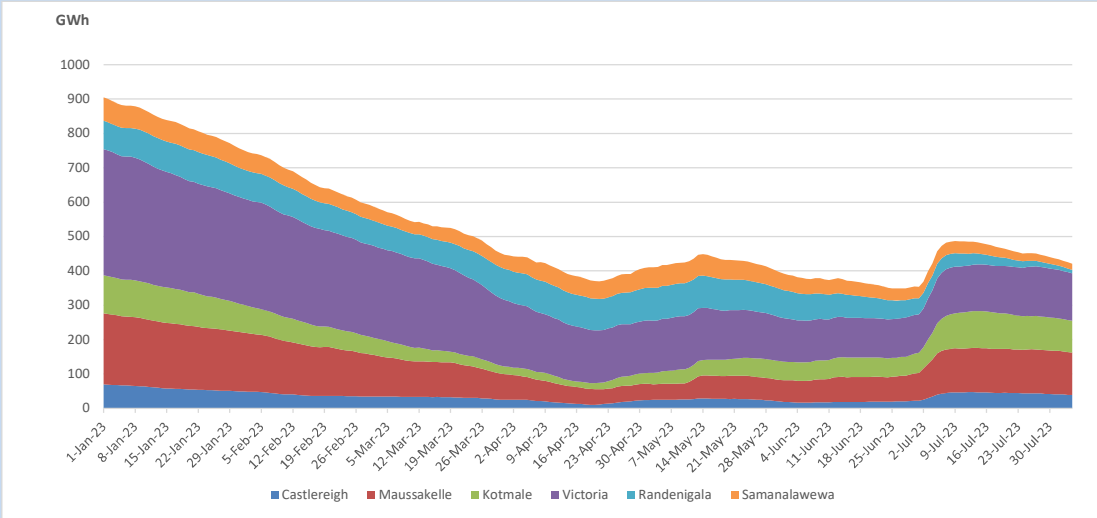


Total Reservoir Level                      420.7 GWh  
 % of Total capacity                            34.9%

### 11. Comparison of Total Reservoir Storage Levels with Past Years

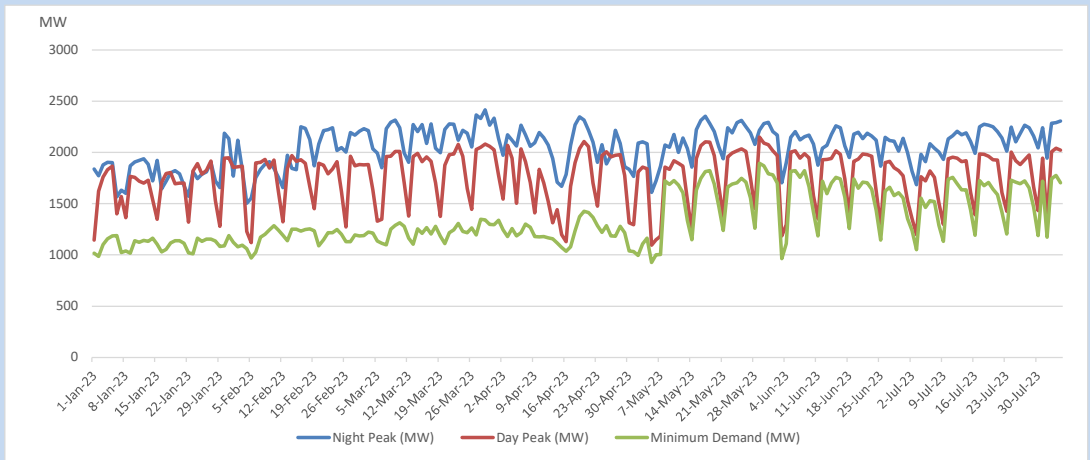


### 12. Variation of Major Hydro Reservoir Levels in the current year (GWh)





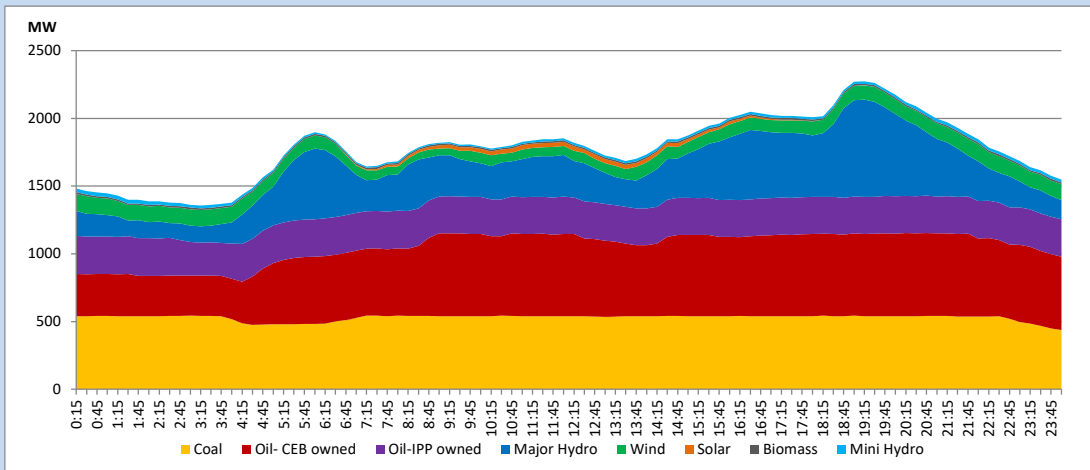
### 13. Variation of Demand during the current year



The above figures are excluding contribution from roof top solar, non telemetered solar and mini hydro plants

### 14. Daily Load Curve

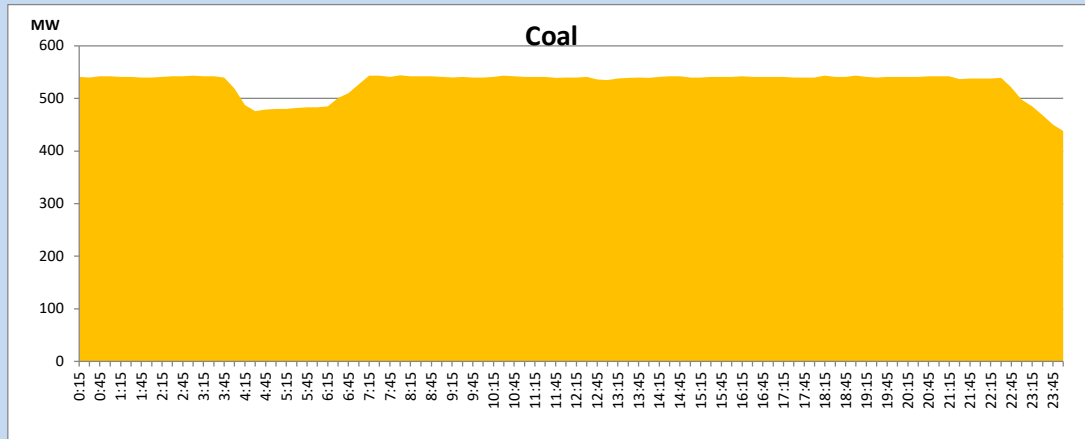
August 4, 2023



Solar and wind data is based on Telemetered Power Stations only

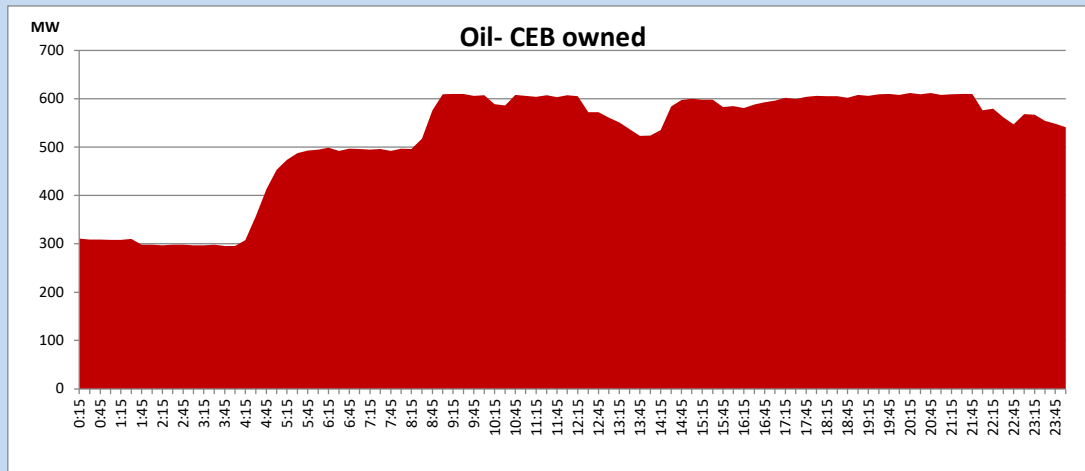
Coal Generation during

August 4, 2023



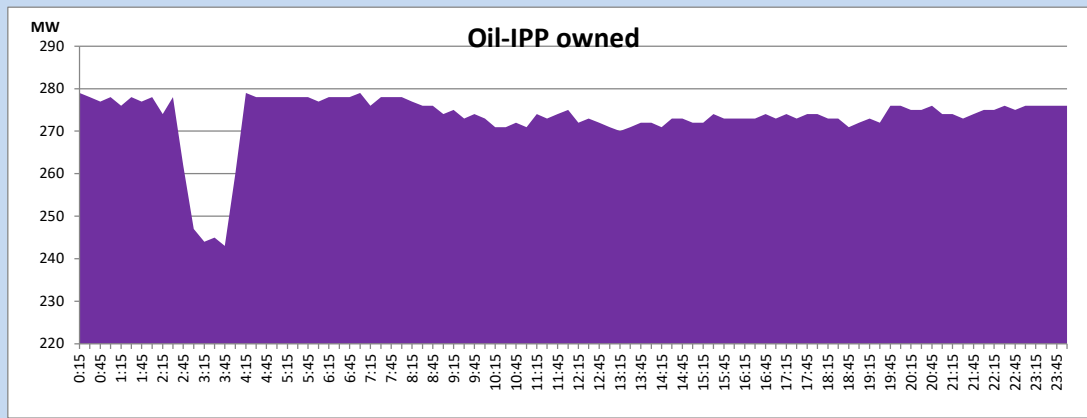
CEB Oil Plant Generation during

August 4, 2023



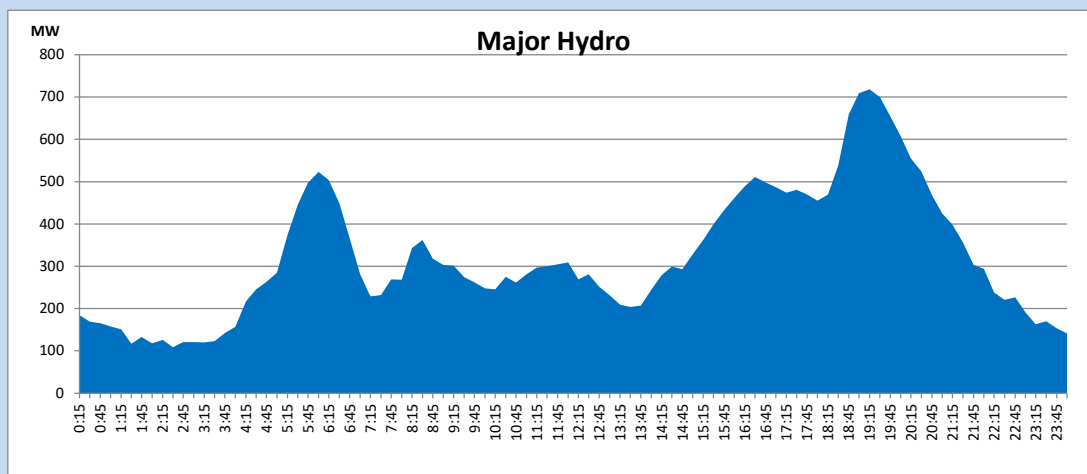
### IPP Oil Plant Generation during

August 4, 2023



### Major Hydro Generation during

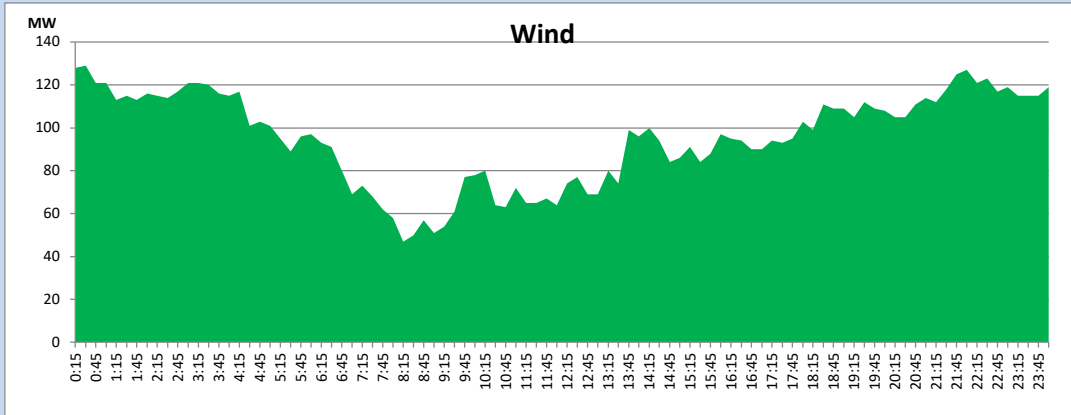
August 4, 2023



## Wind Generation during

August 4, 2023

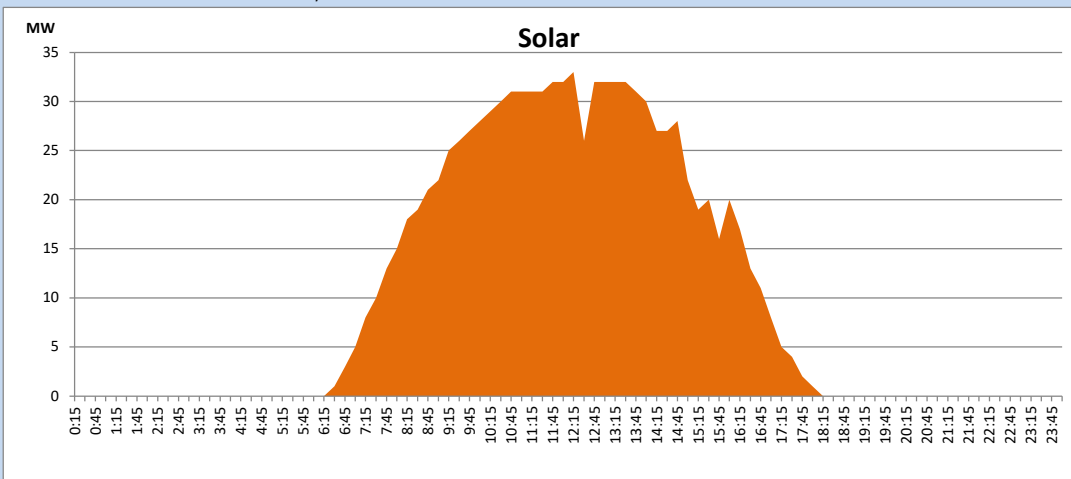
Based on Telemetered Power Stations only



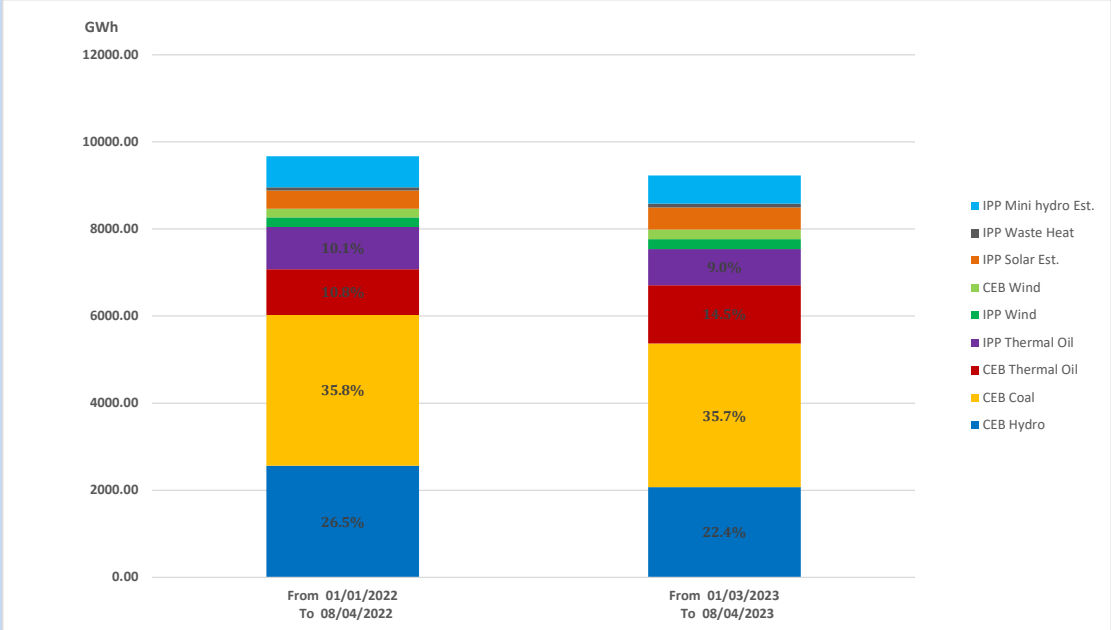
## Solar Generation during

August 4, 2023

Based on Telemetered Power Stations only



### 15. Cumulative Dispatch Comparison with Last Year



Cumulative dispatch  
 From 01/01/2022 To 08/04/2022  
 From 01/01/2023 To 08/04/2023

9664 GWh  
 9231 GWh

The above figures are including contribution from roof top solar, non telemetered solar and mini hydro plants

Thermal Plant Fuel types

Power Station	Primary Fuel
<b>CEB Thermal</b>	
<b>Sapugaskanda 1</b>	Heavy Fuel
<b>Sapugaskanda 2</b>	Heavy Fuel
<b>Kelanitissa Small Gas Turbines</b>	Auto Diesel
<b>GT 7 - Kelanitissa</b>	Auto Diesel
<b>Kelanitissa CCY</b>	Naphtha or Diesel
<b>Lakvijaya 1</b>	Coal
<b>Lakvijaya 2</b>	Coal
<b>Lakvijaya 3</b>	Coal
<b>Uthuru Janani</b>	Heavy Fuel
<b>Barge CEB</b>	Heavy Fuel
<b>KCCPS -2</b>	Auto Diesel

Power Station	Primary Fuel
<b>Private Thermal</b>	
<b>West Coast</b>	Auto Diesel / Heavy Fuel

Major Incidents reported during the day

August 4, 2023

- 1) LVPS unit 02, which was deloaded to 210MW (net) due to an alarm of Generator Differential protection, reached full load at 7:19hrs .
- 2) LVPS unit 02 performed a forced shutdown at 1:33hrs (05/08/2023), to inspect the Generator Differential protection alarm.