

# Generation and Reservoirs Statistics

August 3, 2023



PUBLIC UTILITIES COMMISSION OF SRI LANKA

## 1. Daily Generation Mix in MWh

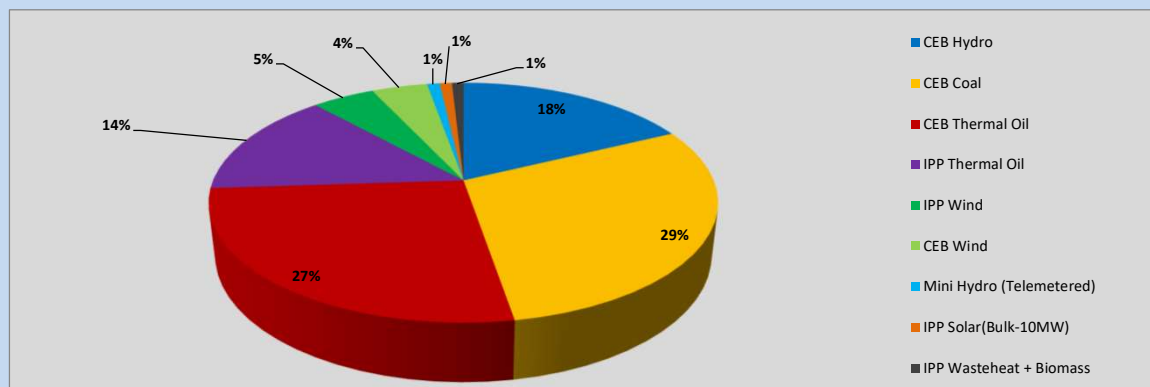


Table 01

CEB Hydro	7,782	MWh
CEB Coal	12,878	MWh
CEB Thermal Oil	11,627	MWh
IPP Thermal Oil	6,242	MWh
IPP Wind	2,070	MWh
CEB Wind	1,850	MWh
Mini Hydro (Telemetered)	418	MWh
IPP Solar (Bulk)	404	MWh
IPP Waste heat + Biomass	384	MWh
<b>Total Generation (Excluding estimated figures)</b>	<b>43,655</b>	<b>MWh</b>
* Estimated unserved energy	0	MWh
* Estimated Mini Hydro (Non telemetered)	3352	MWh
* Estimated IPP Solar PV (Bulk 1-10MW)	304	MWh
* Estimated Solar Roof Top PV	1650	MWh
<b>Total Generation (Including estimated figures)</b>	<b>48,961</b>	<b>MWh</b>

\* Estimated figures of CEB generation report

## 2. Cumulative Dispatch

Following data excludes the contribution from roof top solar, non telemetered solar and mini hydro plants

Table 02 - Current Month

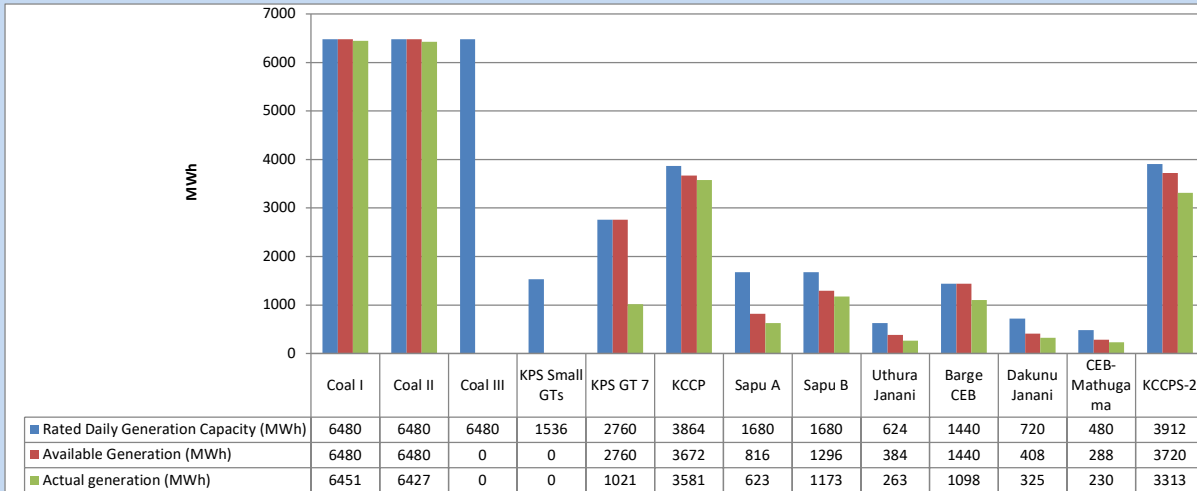
Category	Dispatch (GWh)	
CEB Hydro	22	17.77%
CEB Coal	39	31.66%
CEB Thermal Oil	29	23.63%
IPP Thermal	18	14.99%
SPP Wind	5	4.46%
CEB Wind	5	3.87%
Mini Hydro (Telemetered)	1	0.91%
IPP Solar (Bulk-10MW)	1	0.86%
IPP Waste heat + BMP	1	1.11%
<b>Total</b>	<b>123</b>	

Table 03 - Current Year

Category	Dispatch (GWh)	
CEB Hydro	2,069	24.95%
CEB Coal	3,289	39.67%
CEB Thermal Oil	1,333	16.08%
IPP Thermal	822	9.92%
SPP Wind	216	2.60%
CEB Wind	221	2.67%
Mini Hydro (Telemetered)	202	2.44%
IPP Solar (Bulk-10MW)	64	0.77%
IPP Waste heat	74	0.89%
<b>Total</b>	<b>8,291</b>	

### 3. CEB owned Thermal Plant Dispatch

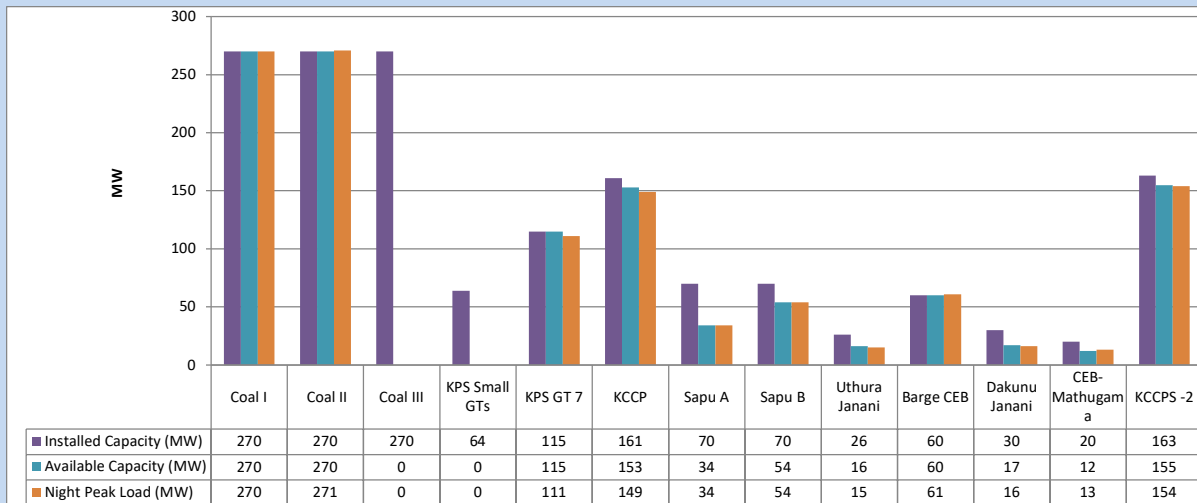
August 3, 2023



Available Generation is estimated based on plant availability at 6.00am on

August 4, 2023

### 4. CEB owned Thermal Plant Loading at the Night Peak

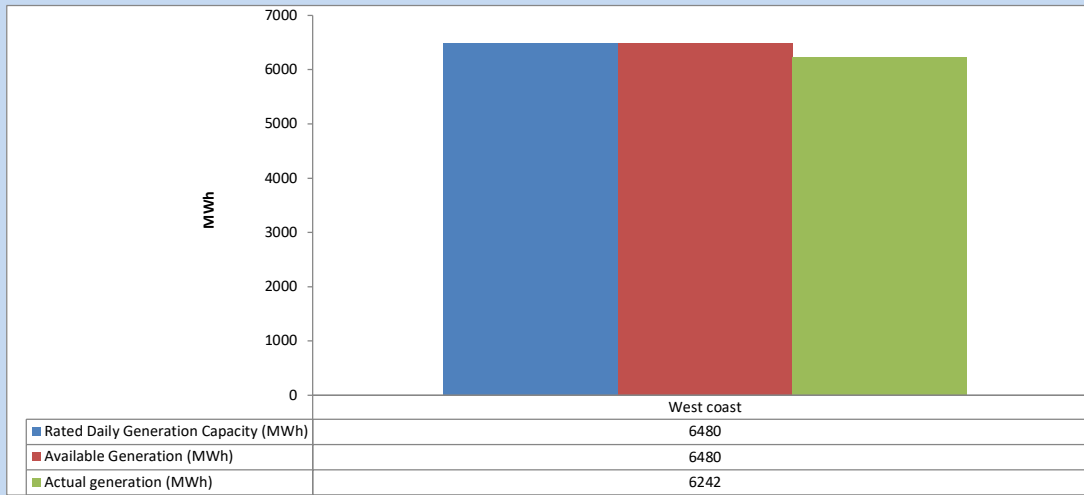


Plant availability is recorded at 6.00 am on

August 4, 2023

## 5. IPP owned Thermal Plant Dispatch

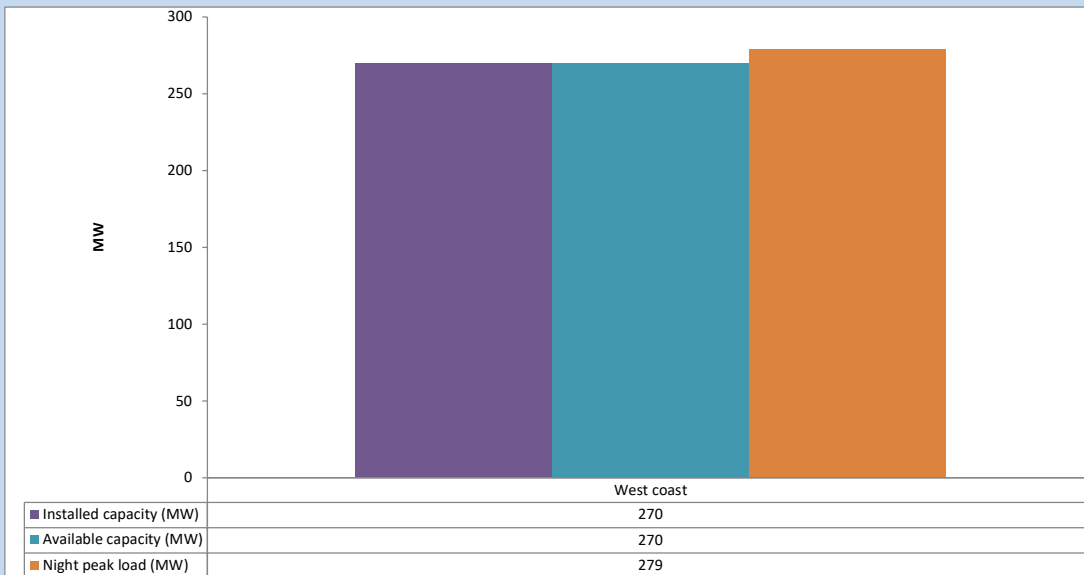
August 3, 2023



Available Generation is estimated based on plant availability at 6.00am on

August 4, 2023

## 6. IPP owned Thermal Plant Loading at the Night Peak

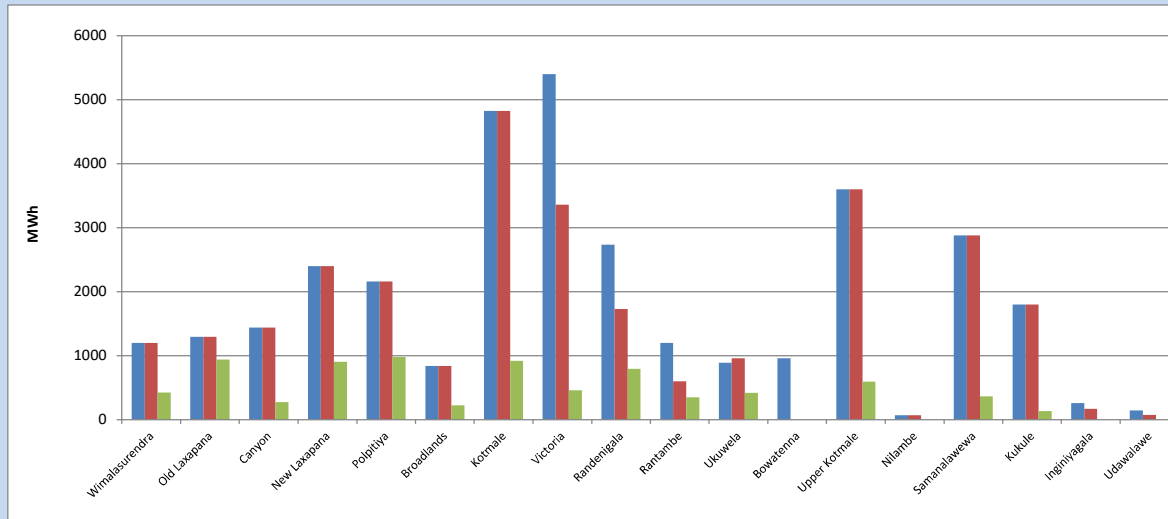


Plant availability is recorded at 6.00 am on

August 4, 2023

### 7. Major Hydro Plant Dispatch

August 3, 2023

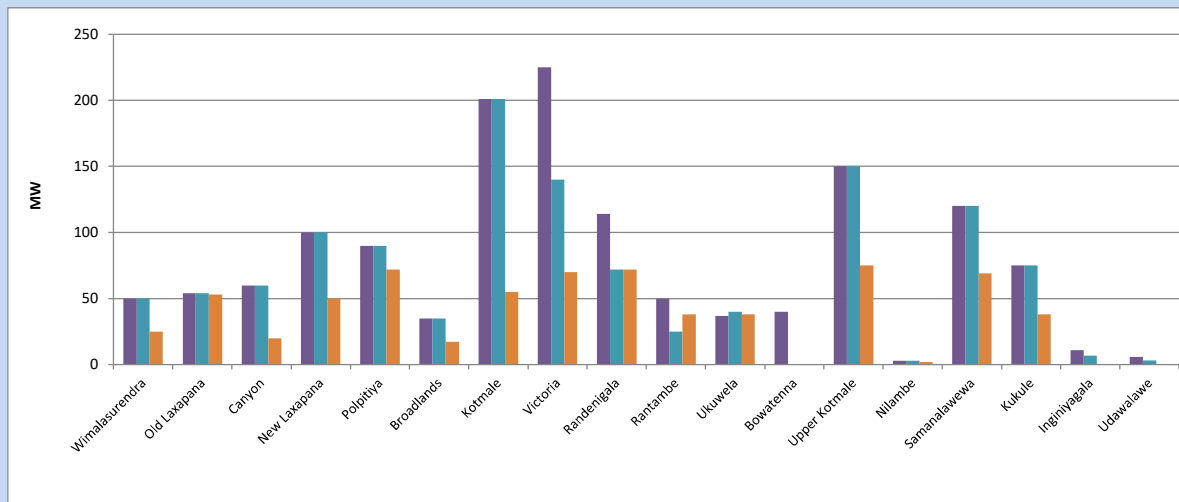


Available Generation is estimated based on plant availability at 6.00am on August 4, 2023  
 Broadlands power plant is operating in the Commissioning Stage

August 4, 2023

### 8. Major Hydro Plant Loading at Night Peak

August 3, 2023



Plant availability is recorded at 6.00 am on August 4, 2023  
 Broadlands power plant is operating in the Commissioning Stage

August 4, 2023

## 9. Summary of Major Plant performance

**Table 04**

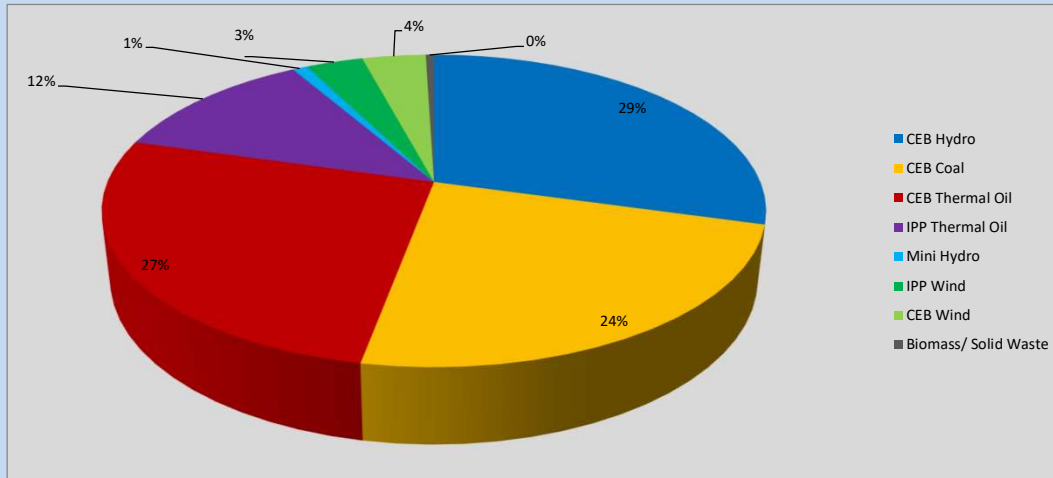
Plant	Installed Capacity	Plant Availability	Night peak Load	Plant Dispatch
	(MW)	(MW)	(MW)	(MWh)
Wimalasurendra	50	50	25	426
Old Laxapana	54	54	53	939
Canyon	60	60	20	275
New Laxapana	100	100	50	903
Polpitiya	90	90	72	979
Broadlands	35	35	17	225
Kotmale	201	201	55	920
Victoria	225	140	70	457
Randenigala	114	72	72	793
Rantambe	50	25	38	347
Ukuwela	37	40	38	417
Bowatenna	40	0	0	0
Upper Kotmale	150	150	75	596
Nilambe	3	3	2	3
Samanalawewa	120	120	69	364
Kukule	75	75	38	138
Inginiyagala	11	7	0	0
Udawalawe	6	3	0	0
Puttalam Coal I	270	270	270	6,451
Puttalam Coal II	270	270	271	6,427
Puttalam Coal III	270	0	0	0
KPS Small GTs	64	0	0	0
KPS GT 7	115	115	111	1,021
KCCP	161	153	149	3,581
Sapugaskanda A	70	34	34	623
Sapugaskanda B	70	54	54	1,173
Uthura Janani	26	16	15	263
Barge CEB	60	60	61	1,098
CEB-Hambantota	30	17	16	325
CEB-Mathugama	20	12	13	230
ACE Matara	24	0	0	0
Asia Power	50	0	0	0
KCCPS -2	163	155	154	3,313
West Coast	270	270	279	6,242
Nothern Power	36	0	0	0
ACE Embilipitiya	93	0	0	0
<b>Total</b>	<b>3,483</b>	<b>2,651</b>	<b>2,313</b>	<b>43,655</b>

Plant availability is the availability recorded at 6 am on

August 4, 2023

### 10. Contribution to the Night Peak in MW

August 3, 2023



**Table 05**

CEB Hydro	671	MW
CEB Coal	541	MW
CEB Thermal Oil	607	MW
IPP Thermal Oil	279	MW
Mini Hydro (Telemetered)	20	MW
IPP Wind	76.2	MW
CEB Wind	84.7	MW
Biomass/ Solid Waste	11	MW

#### Recorded Peak Demand Data

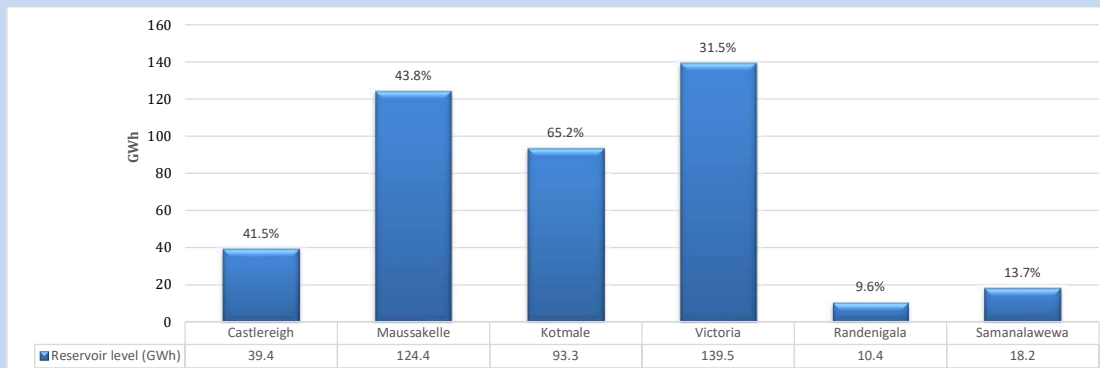
**Table 06**

Night Peak*	2,290	MW
Day Peak Maximum Demand	2,040	MW
Day Peak Minimum Demand	1,775	MW
Off Peak Minimum Demand	1,348	MW

Above figures are excluding contribution from roof top solar, non telemetered solar and mini hydro plants

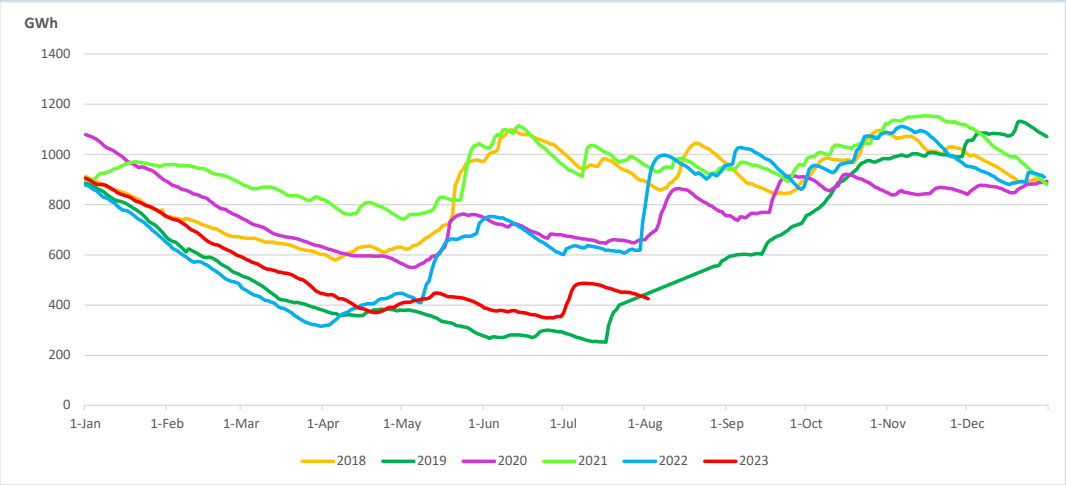
#### Reservoir Levels -

as at 06.00 Hr on August 4, 2023

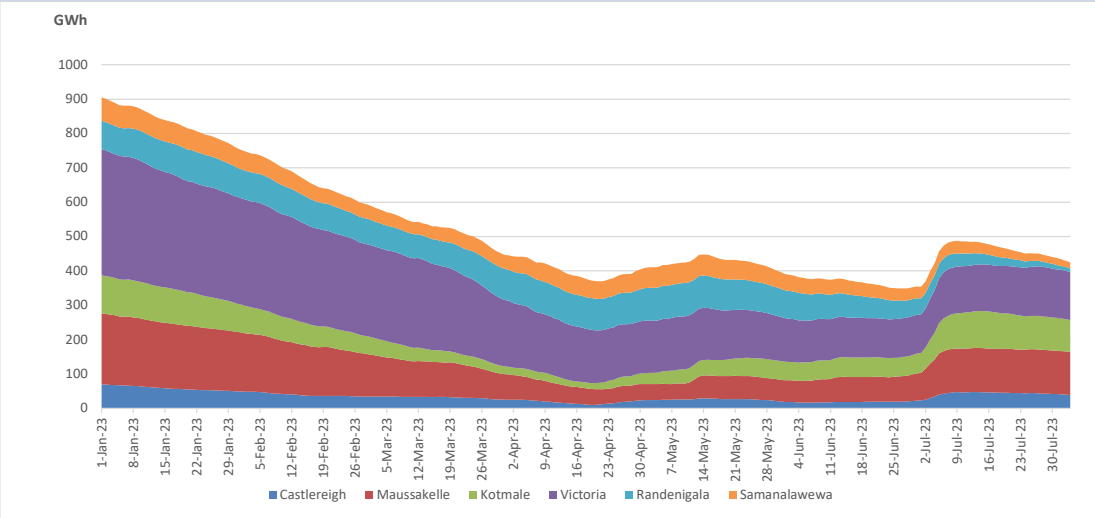


Total Reservoir Level                      425.2 GWh  
 % of Total capacity                            35.3%

### 11. Comparison of Total Reservoir Storage Levels with Past Years

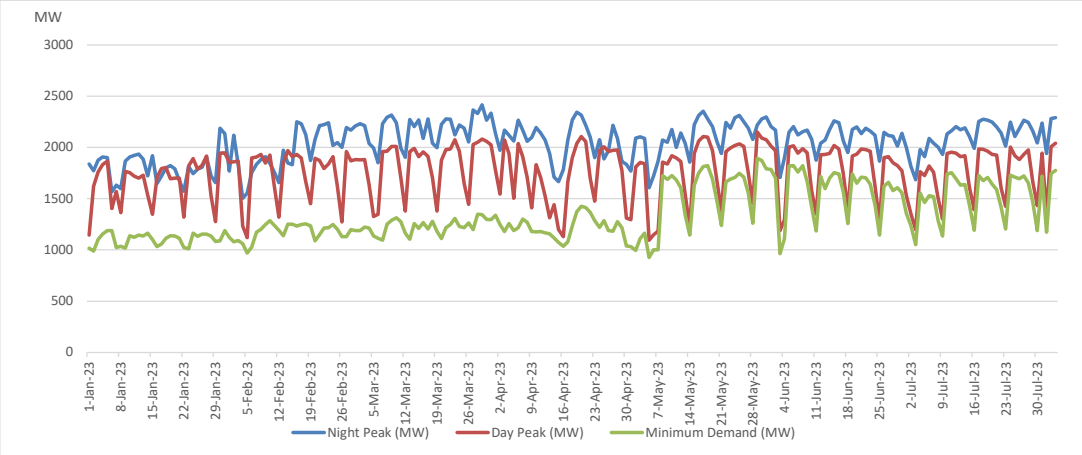


### 12. Variation of Major Hydro Reservoir Levels in the current year (GWh)





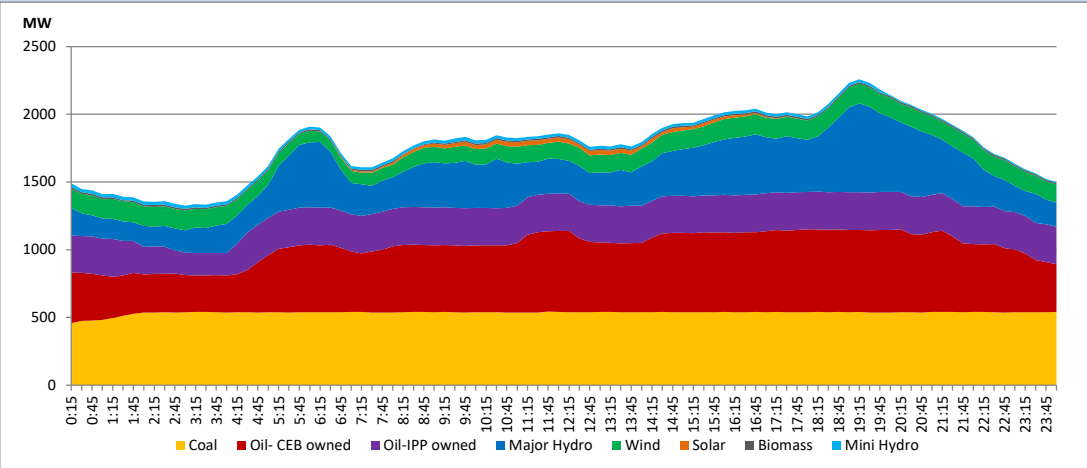
### 13. Variation of Demand during the current year



The above figures are excluding contribution from roof top solar, non telemetered solar and mini hydro plants

### 14. Daily Load Curve

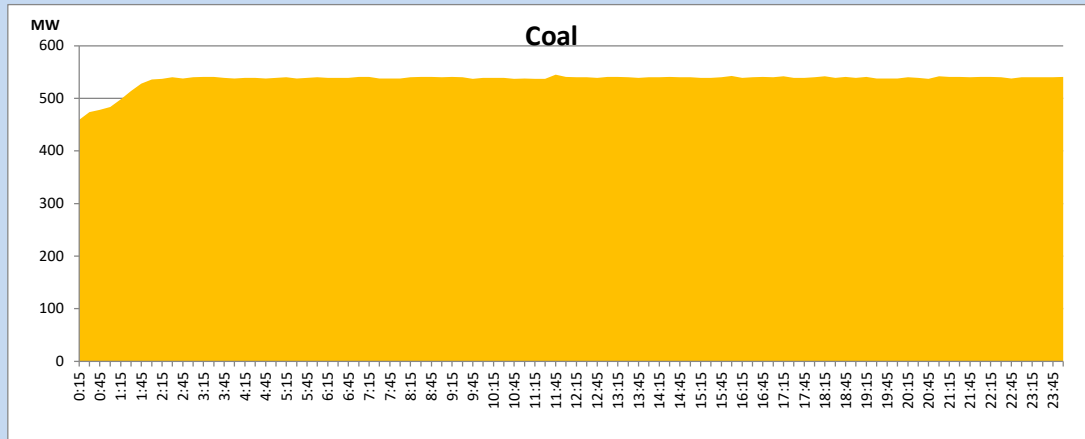
August 3, 2023



Solar and wind data is based on Telemetered Power Stations only

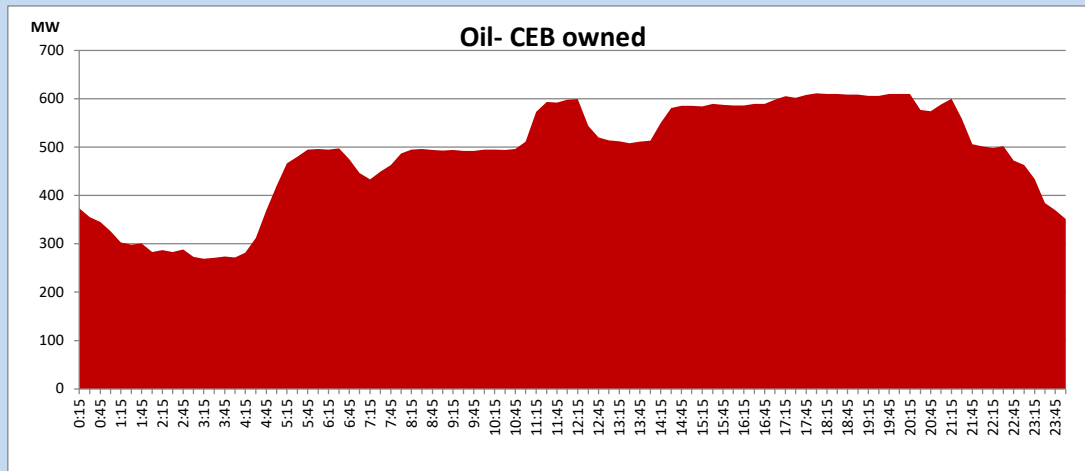
Coal Generation during

August 3, 2023



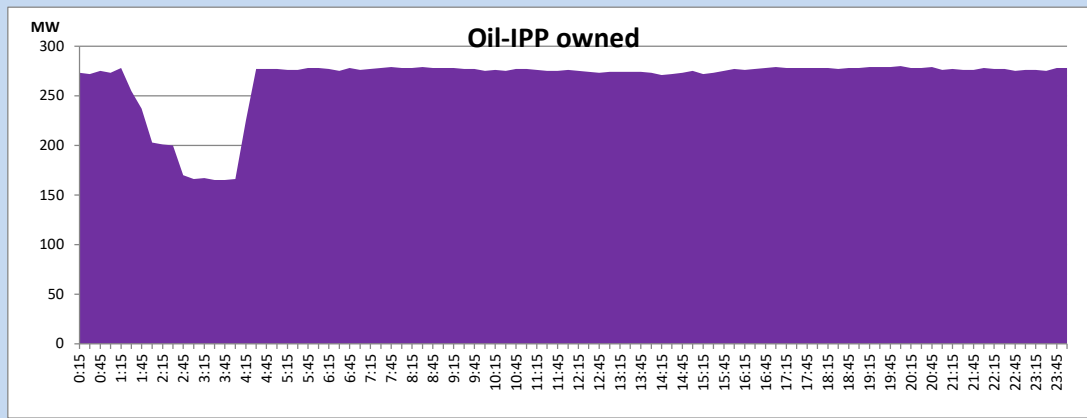
CEB Oil Plant Generation during

August 3, 2023



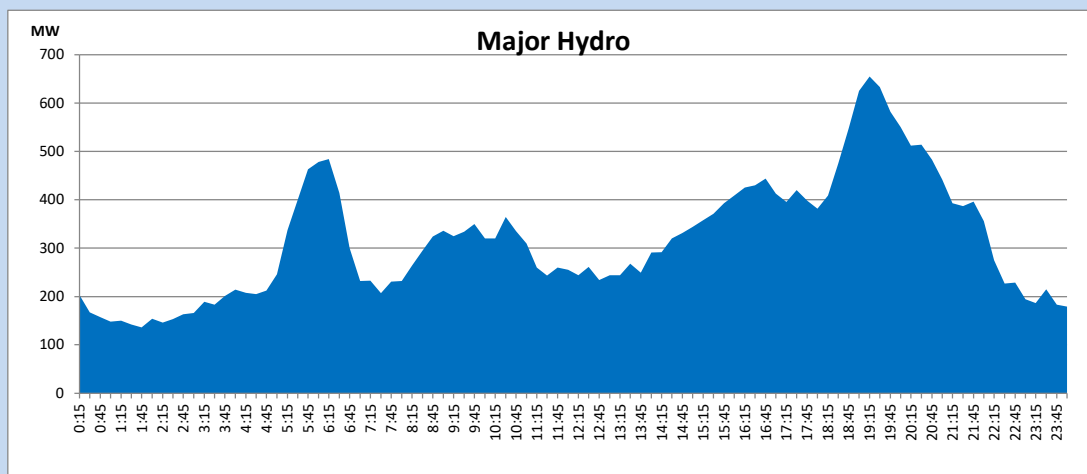
IPP Oil Plant Generation during

August 3, 2023



Major Hydro Generation during

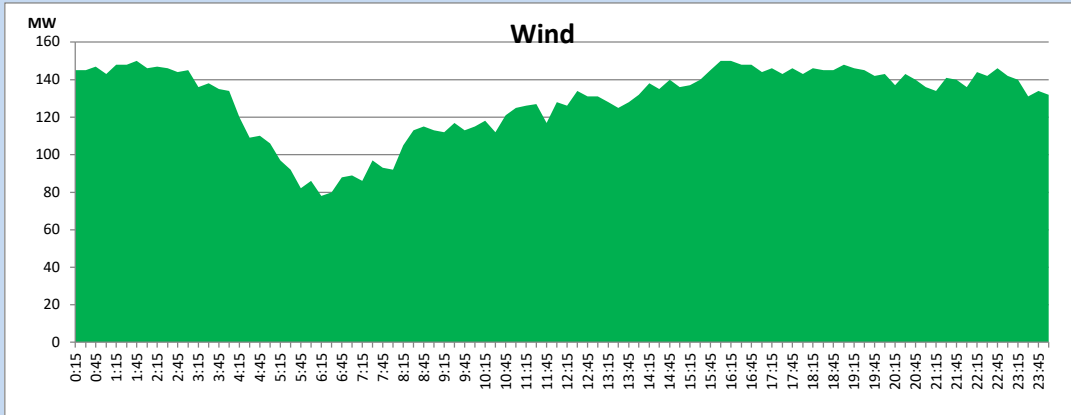
August 3, 2023



## Wind Generation during

August 3, 2023

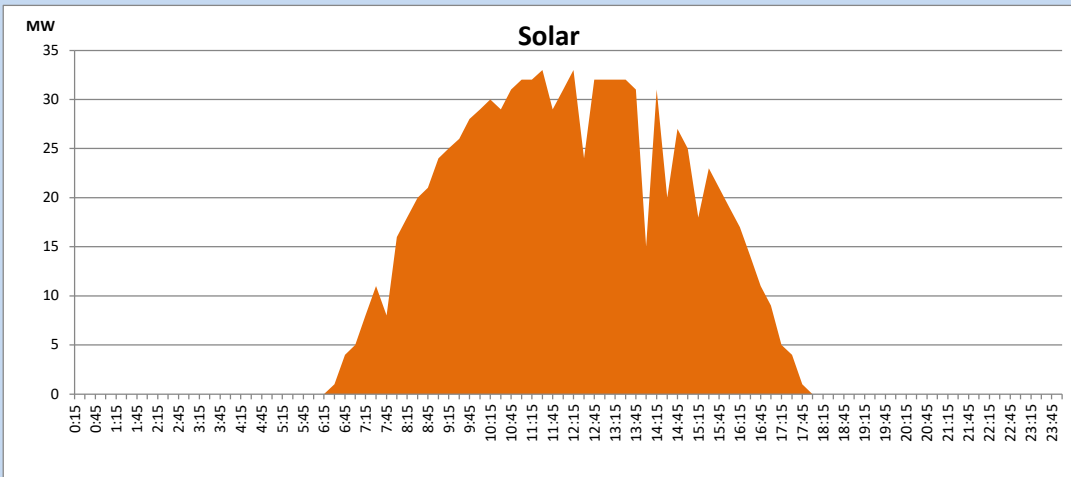
Based on Telemetered Power Stations only



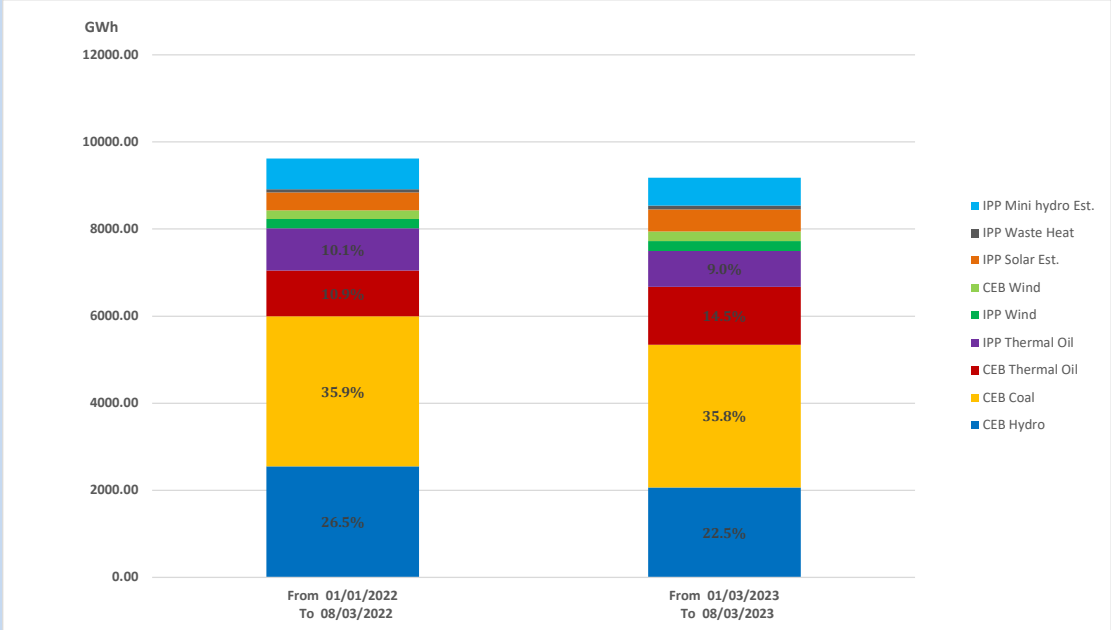
## Solar Generation during

August 3, 2023

Based on Telemetered Power Stations only



### 15. Cumulative Dispatch Comparison with Last Year



Cumulative dispatch  
 From 01/01/2022 To 08/03/2022  
 From 01/01/2023 To 08/03/2023

9620 GWh  
 9181 GWh

The above figures are including contribution from roof top solar, non telemetered solar and mini hydro plants

**Thermal Plant Fuel types**

Power Station	Primary Fuel
<b>CEB Thermal</b>	
<b>Sapugaskanda 1</b>	Heavy Fuel
<b>Sapugaskanda 2</b>	Heavy Fuel
<b>Kelanitissa Small Gas Turbines</b>	Auto Diesel
<b>GT 7 - Kelanitissa</b>	Auto Diesel
<b>Kelanitissa CCY</b>	Naphtha or Diesel
<b>Lakvijaya 1</b>	Coal
<b>Lakvijaya 2</b>	Coal
<b>Lakvijaya 3</b>	Coal
<b>Uthuru Janani</b>	Heavy Fuel
<b>Barge CEB</b>	Heavy Fuel
<b>KCCPS -2</b>	Auto Diesel

Power Station	Primary Fuel
<b>Private Thermal</b>	
<b>West Coast</b>	Auto Diesel / Heavy Fuel

**Major Incidents reported during the day**

August 3, 2023

1) Generator differential protection starting alarm occurred in LVPS Unit 02 at 03:41hrs(04.08.2023). Since then, the unit was de-loaded to 210 MW (Net) for system reliability purposes until 06:00hrs(04.08.2023).