

Generation and Reservoirs Statistics

August 2, 2023



PUBLIC UTILITIES COMMISSION OF SRI LANKA

1. Daily Generation Mix in MWh

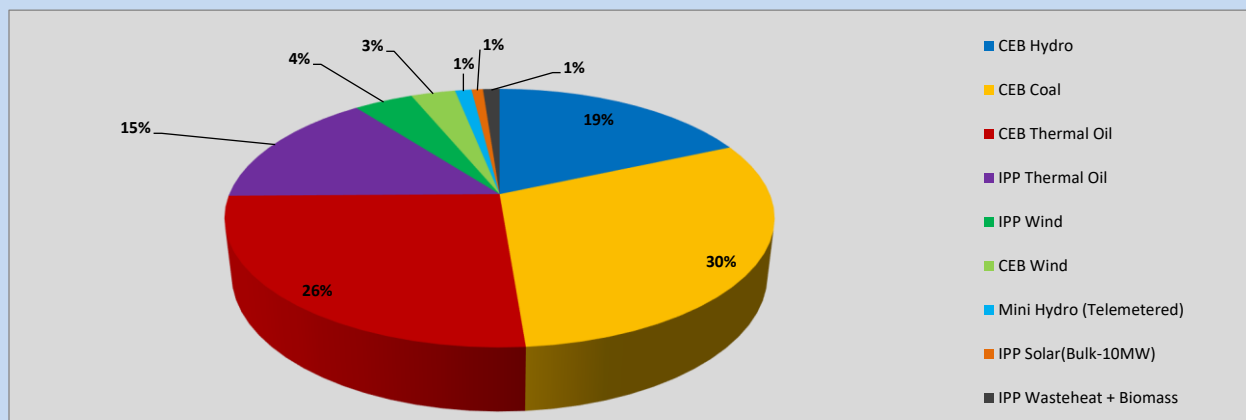


Table 01

CEB Hydro	7,857	MWh
CEB Coal	12,934	MWh
CEB Thermal Oil	11,115	MWh
IPP Thermal Oil	6,310	MWh
IPP Wind	1,775	MWh
CEB Wind	1,331	MWh
Mini Hydro (Telemetered)	495	MWh
IPP Solar (Bulk)	343	MWh
IPP Wasteheat + Biomass	498	MWh
Total Generation (Excluding estimated figures)	42,658	MWh
* Estimated unserved energy	0	MWh
* Estimated Mini Hydro (Non telemetered)	3275	MWh
* Estimated IPP Solar PV (Bulk 1-10MW)	304	MWh
* Estimated Solar Roof Top PV	1650	MWh
Total Generation (Including estimated figures)	47,887	MWh

* Estimated figures of CEB generation report

2. Cumulative Dispatch

Following data excludes the contribution from roof top solar, non telemetered solar and mini hydro plants

Table 02 - Current Month

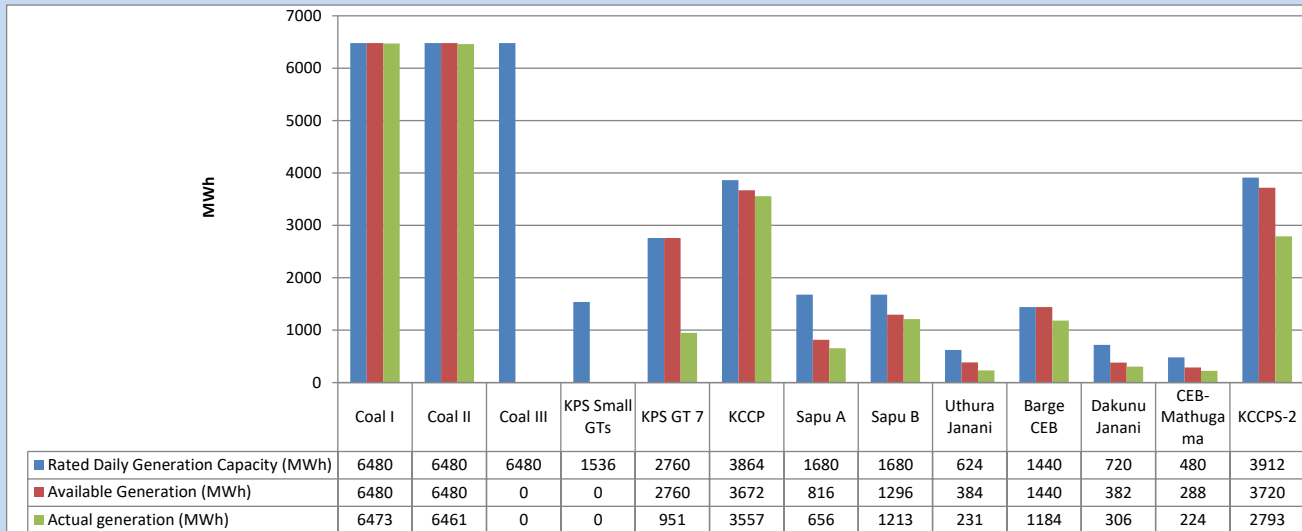
Category	Dispatch (GWh)	
CEB Hydro	14	17.94%
CEB Coal	26	33.23%
CEB Thermal Oil	17	22.21%
IPP Thermal	12	15.56%
SPP Wind	3	4.36%
CEB Wind	3	3.70%
Mini Hydro (Telemetered)	1	0.90%
IPP Solar(Bulk-10MW)	1	0.85%
IPP Wasteheat + BMP	1	1.26%
Total	78	

Table 03 - Current Year

Category	Dispatch (GWh)	
CEB Hydro	2,061	24.99%
CEB Coal	3,276	39.73%
CEB Thermal Oil	1,321	16.02%
IPP Thermal	816	9.89%
SPP Wind	213	2.59%
CEB Wind	219	2.66%
Mini Hydro (Telemetered)	202	2.45%
IPP Solar(Bulk-10MW)	64	0.77%
IPP Wasteheat	74	0.89%
Total	8,246	

3. CEB owned Thermal Plant Dispatch

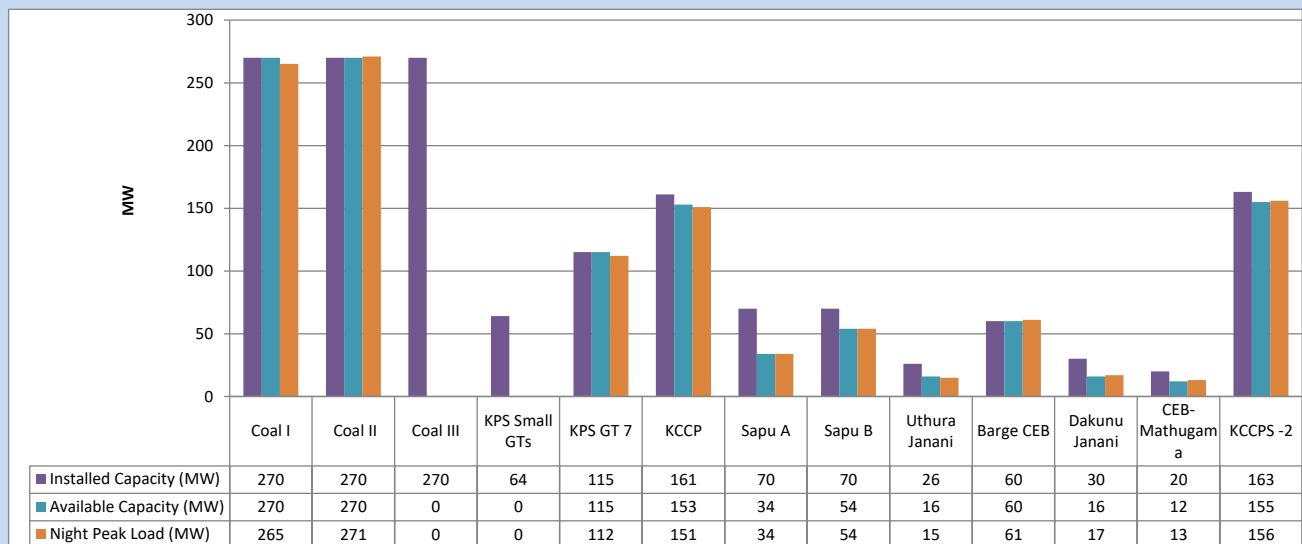
August 2, 2023



Available Generation is estimated based on plant availability at 6.00am on

August 3, 2023

4. CEB owned Thermal Plant Loading at the Night Peak

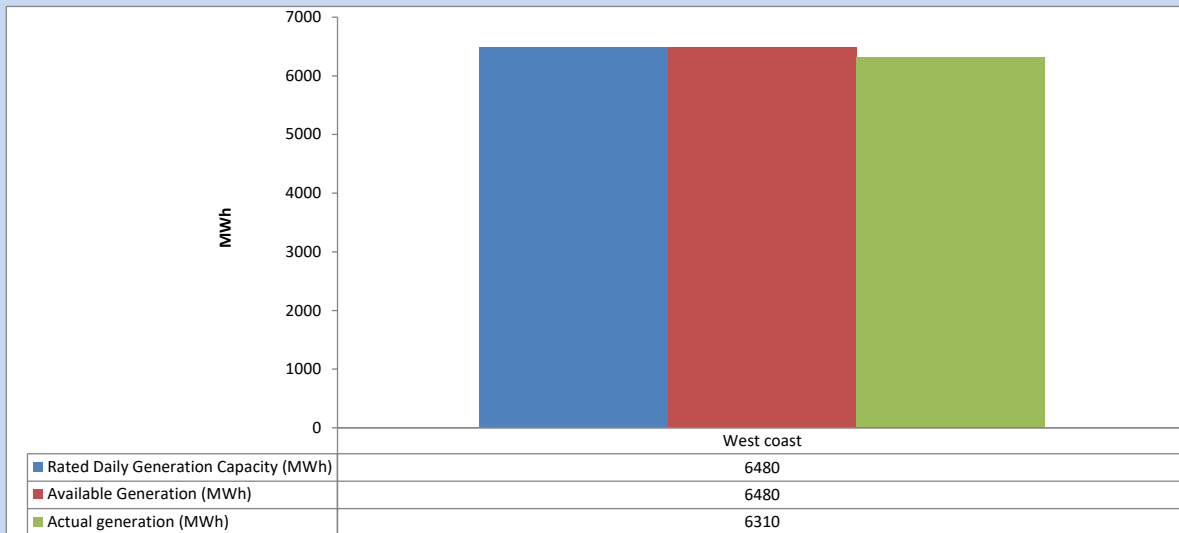


Plant availability is recorded at 6.00 am on

August 3, 2023

5. IPP owned Thermal Plant Dispatch

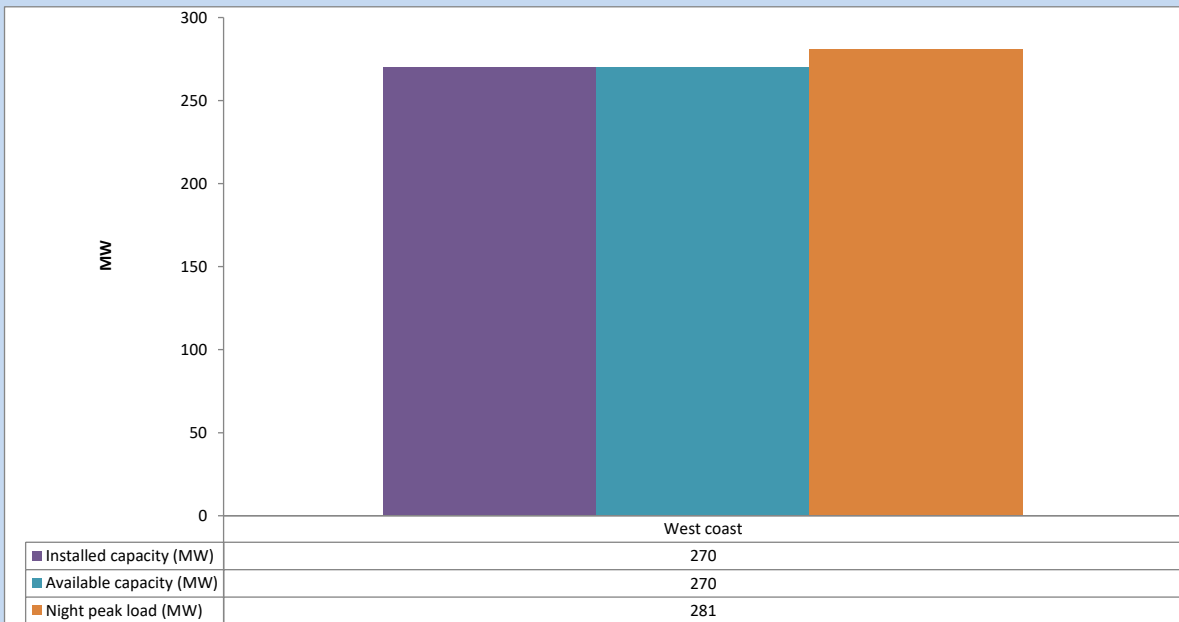
August 2, 2023



Available Generation is estimated based on plant availability at 6.00am on

August 3, 2023

6. IPP owned Thermal Plant Loading at the Night Peak

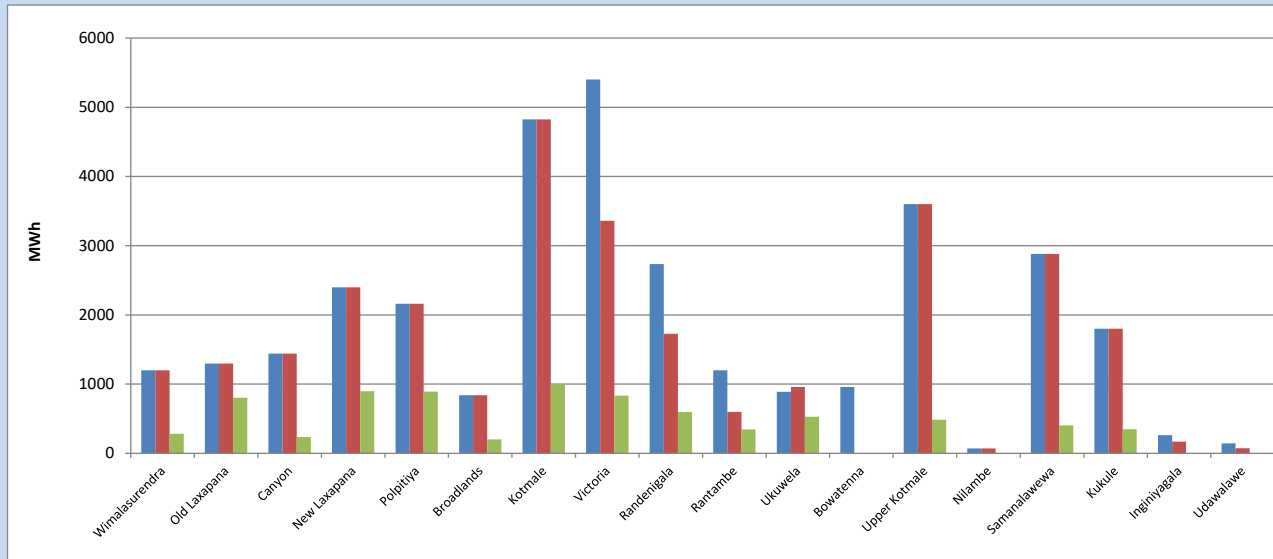


Plant availability is recorded at 6.00 am on

August 3, 2023

7. Major Hydro Plant Dispatch

August 2, 2023

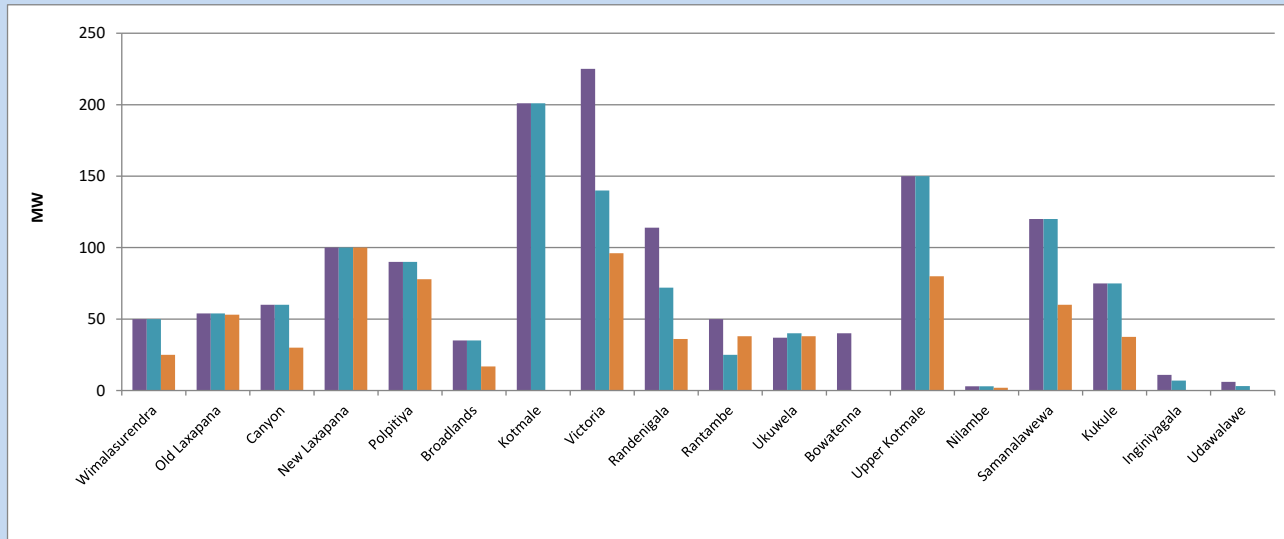


Available Generation is estimated based on plant availability at 6.00am on August 3, 2023
Broadlands power plant is operating in the Commissioning Stage

August 3, 2023

8. Major Hydro Plant Loading at Night Peak

August 2, 2023



Plant availability is recorded at 6.00 am on August 3, 2023
Broadlands power plant is operating in the Commissioning Stage

August 3, 2023

9. Summary of Major Plant performance

Table 04

Plant	Installed Capacity	Plant Availability	Night peak Load	Plant Dispatch
	(MW)	(MW)	(MW)	(MWh)
Wimalasurendra	50	50	25	282
Old Laxapana	54	54	53	804
Canyon	60	60	30	235
New Laxapana	100	100	100	897
Polpitiya	90	90	78	891
Broadlands	35	35	17	202
Kotmale	201	201	0	1,000
Victoria	225	140	96	835
Randenigala	114	72	36	595
Rantambe	50	25	38	345
Ukuwela	37	40	38	528
Bowatenna	40	0	0	0
Upper Kotmale	150	150	80	487
Nilambe	3	3	2	4
Samanalawewa	120	120	60	402
Kukule	75	75	38	350
Inginiyagala	11	7	0	0
Udawalawe	6	3	0	0
Puttalam Coal I	270	270	265	6,473
Puttalam Coal II	270	270	271	6,461
Puttalam Coal III	270	0	0	0
KPS Small GTs	64	0	0	0
KPS GT 7	115	115	112	951
KCCP	161	153	151	3,557
Sapugaskanda A	70	34	34	656
Sapugaskanda B	70	54	54	1,213
Uthura Janani	26	16	15	231
Barge CEB	60	60	61	1,184
CEB-Hambantota	30	16	17	306
CEB-Mathugama	20	12	13	224
ACE Matara	24	0	0	0
Asia Power	50	0	0	0
KCCPS -2	163	155	156	2,793
West Coast	270	270	281	6,310
Nothern Power	36	0	0	0
ACE Embilipitiya	93	0	0	0
Total	3,483	2,650	2,306	42,658

Plant availability is the availability recorded at 6 am on

August 3, 2023

10. Contribution to the Night Peak in MW

August 2, 2023

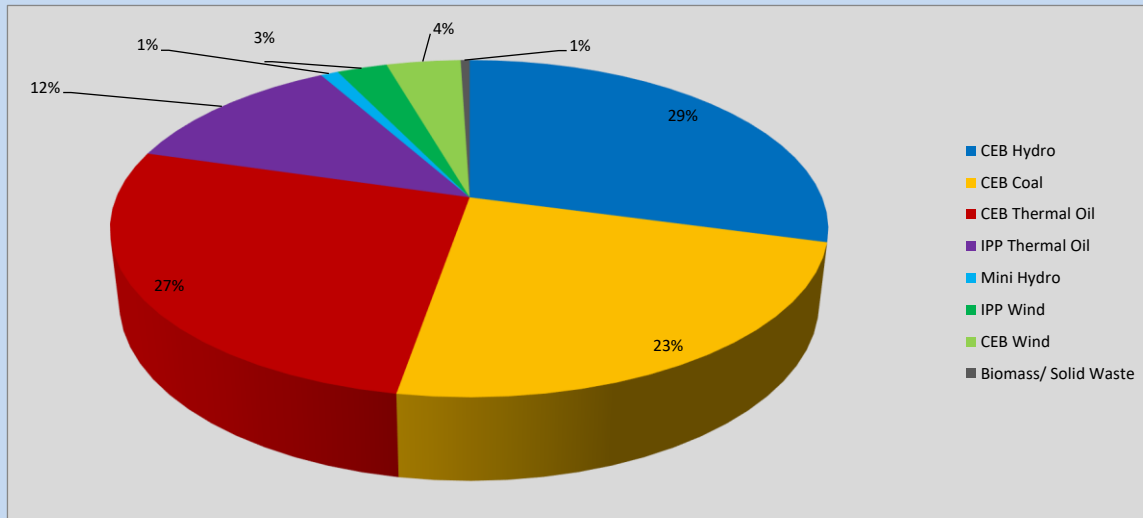


Table 05

CEB Hydro	667	MW
CEB Coal	536	MW
CEB Thermal Oil	613	MW
IPP Thermal Oil	281	MW
Mini Hydro (Telemetered)	22	MW
IPP Wind	61.8	MW
CEB Wind	91.2	MW
Biomass/ Solid Waste	11	MW

Recorded Peak Demand Data

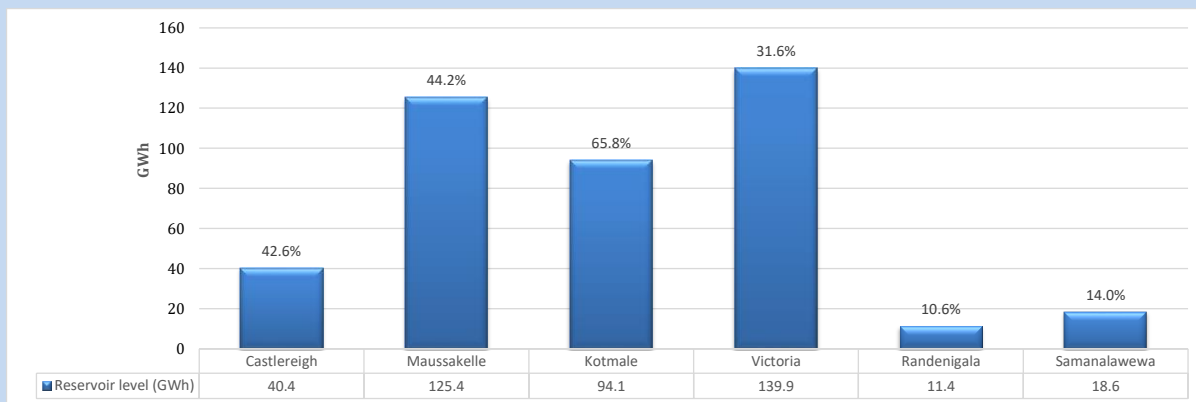
Table 06

Night Peak*	2,283	MW
Day Peak Maximum Demand	2,007	MW
Day Peak Minimum Demand	1,744	MW
Off Peak Minimum Demand	1,229	MW

Above figures are excluding contribution from roof top solar, non telemetered solar and mini hydro plants

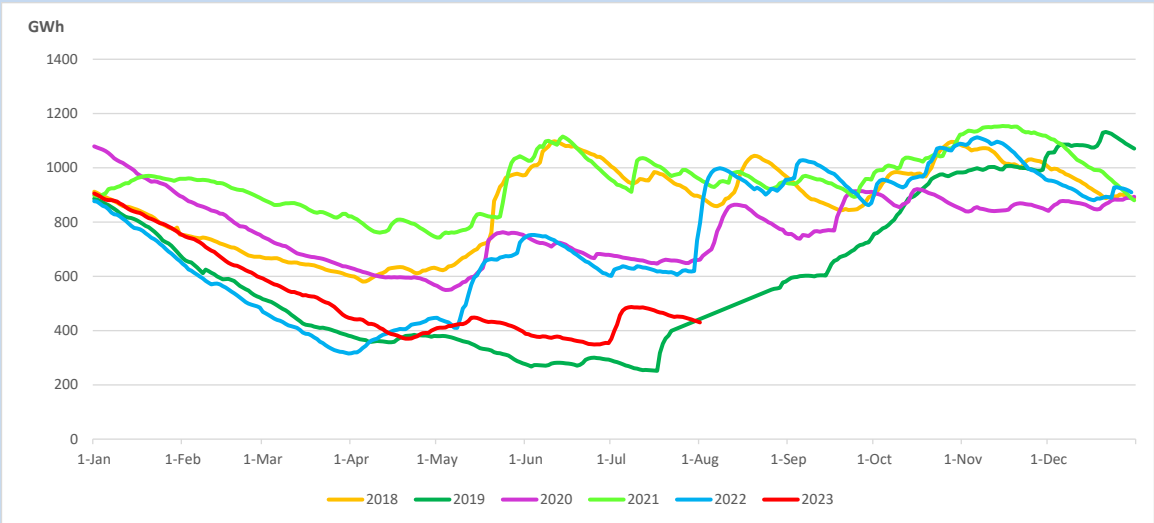
Reservoir Levels -

as at 06.00 Hr on August 3, 2023

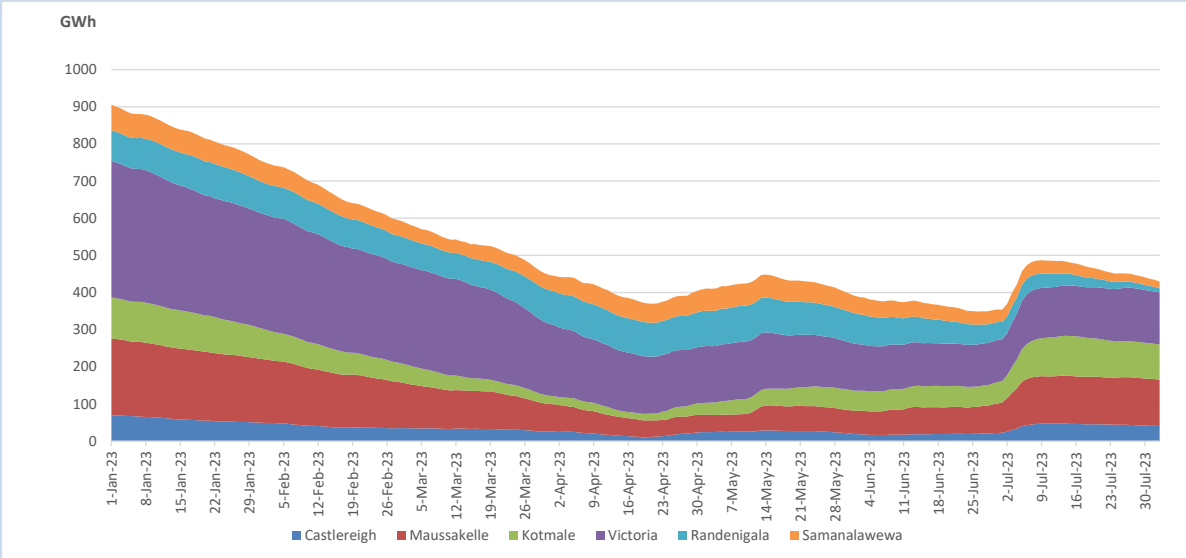


Total Reservoir Level 429.8 GWh
 % of Total capacity 35.7%

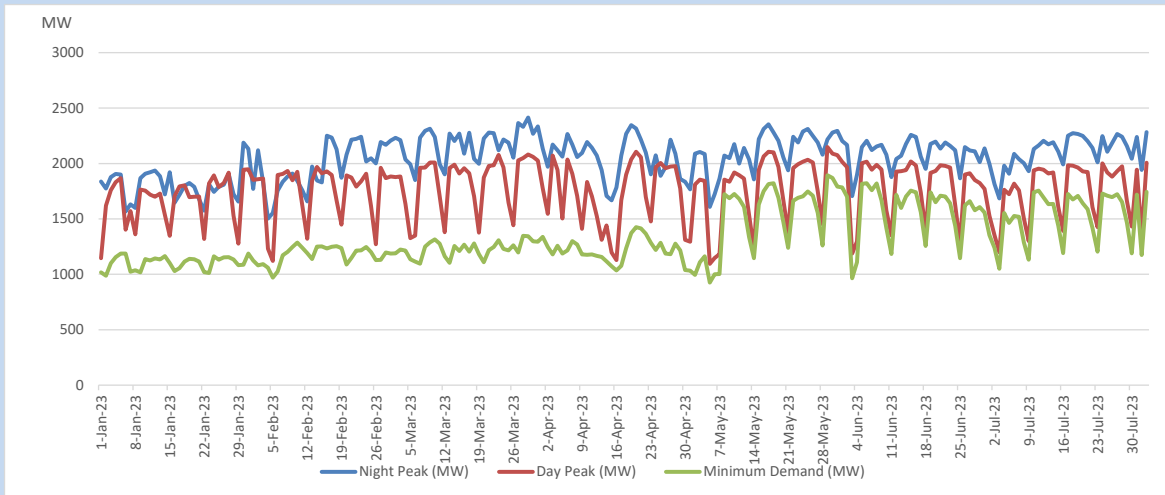
11. Comparison of Total Reservoir Storage Levels with Past Years



12. Variation of Major Hydro Reservoir Levels in the current year (GWh)



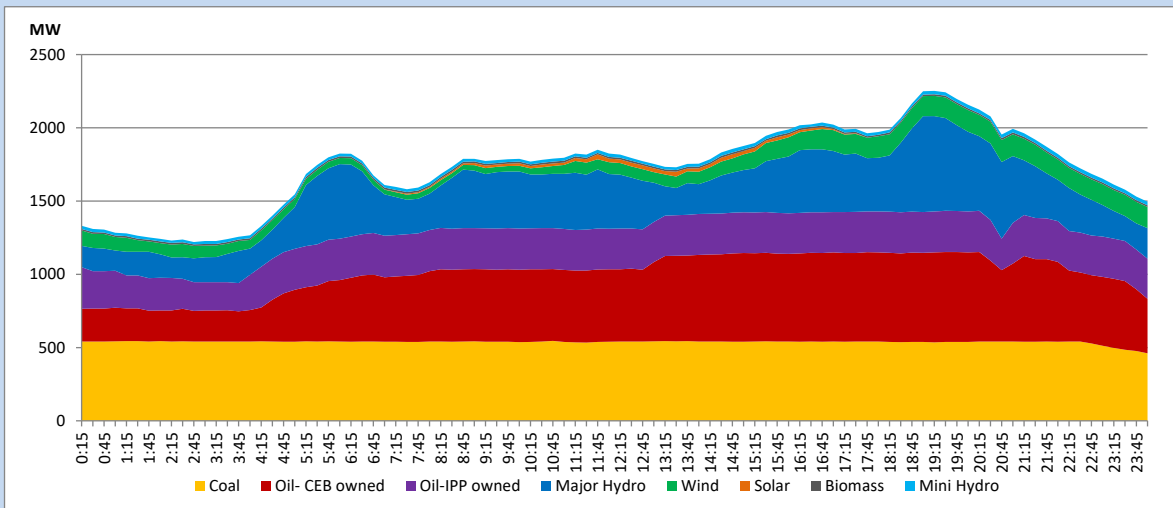
13. Variation of Demand during the current year



The above figures are excluding contribution from roof top solar, non telemetered solar and mini hydro plants

14. Daily Load Curve

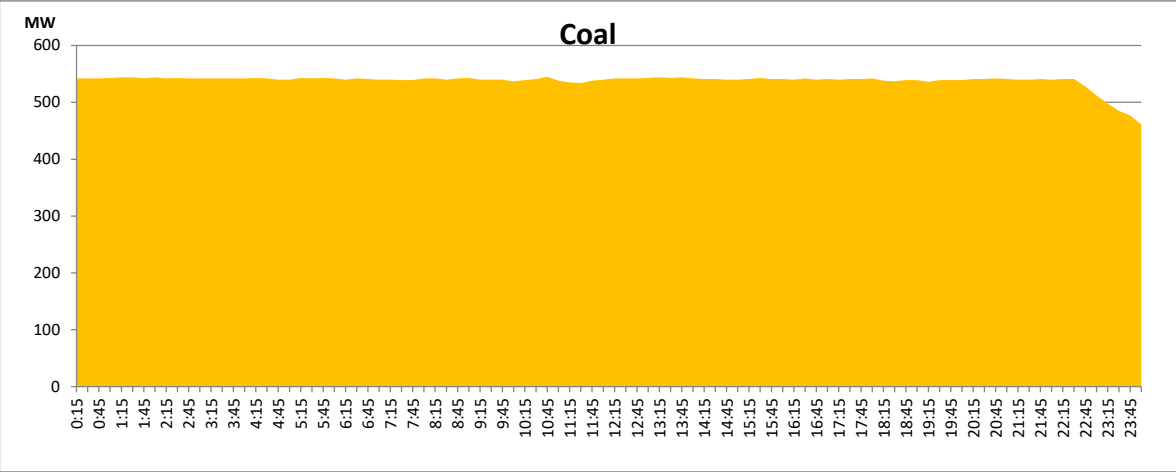
August 2, 2023



Solar and wind data is based on Telemetered Power Stations only

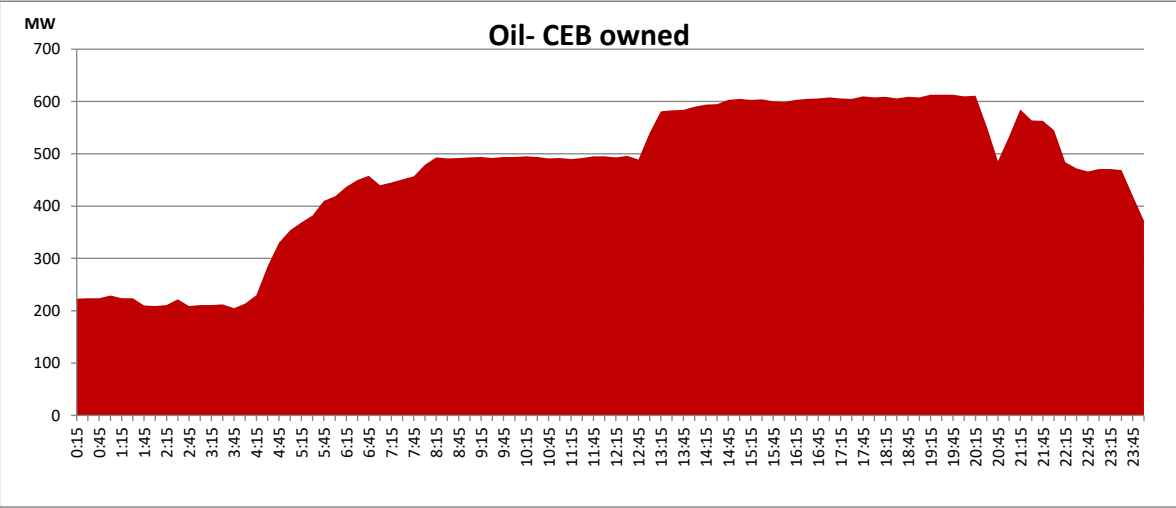
Coal Generation during

August 2, 2023



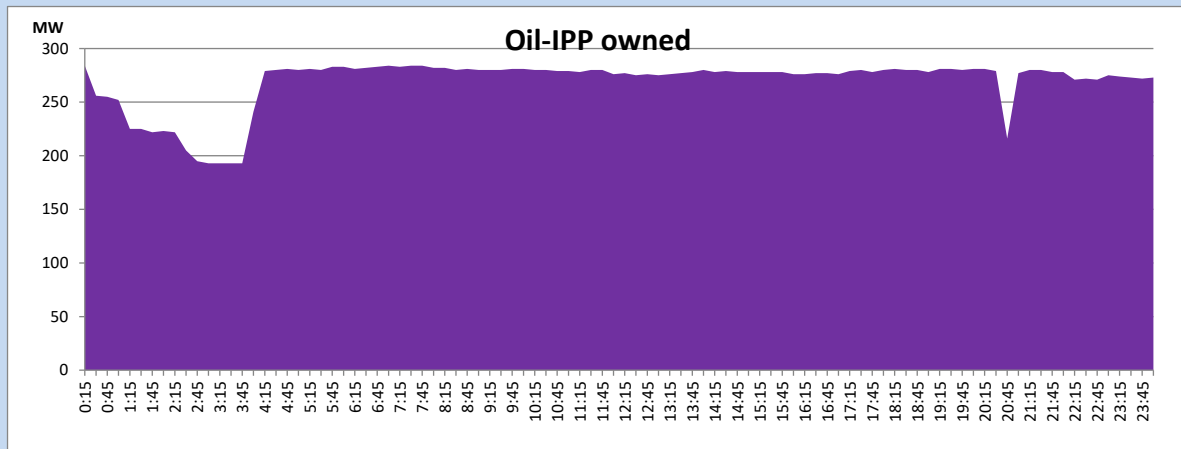
CEB Oil Plant Generation during

August 2, 2023



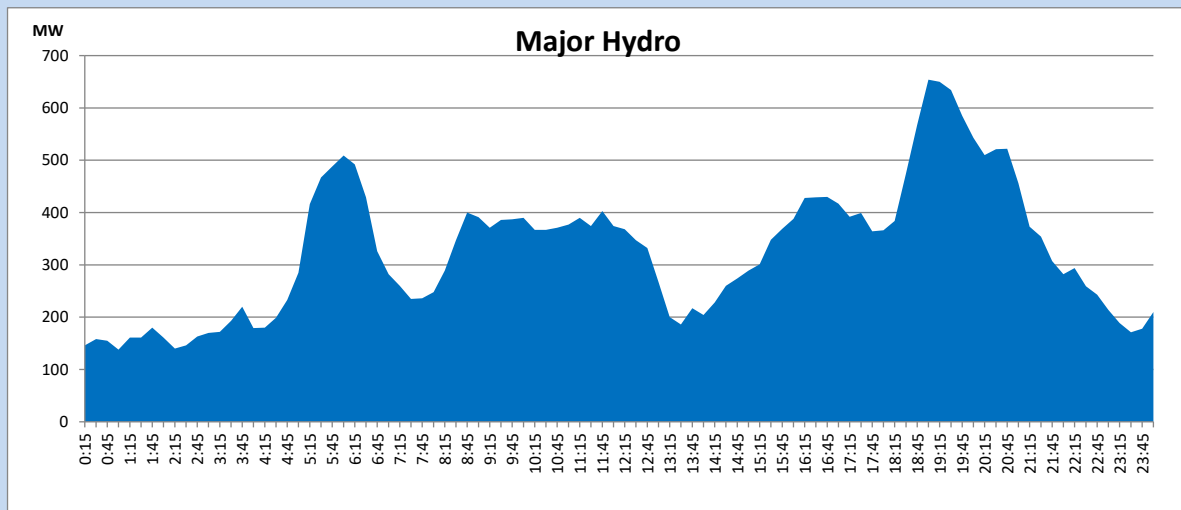
IPP Oil Plant Generation during

August 2, 2023



Major Hydro Generation during

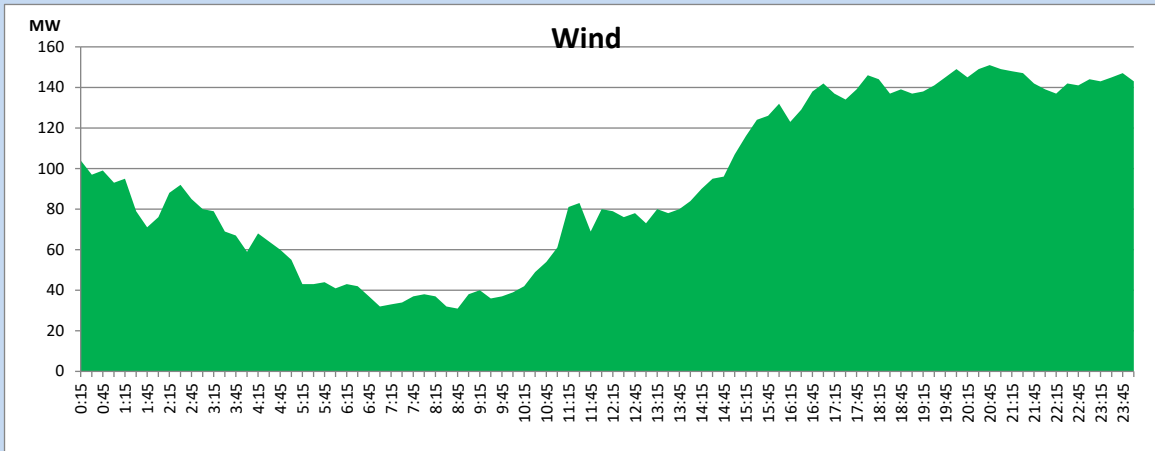
August 2, 2023



Wind Generation during

August 2, 2023

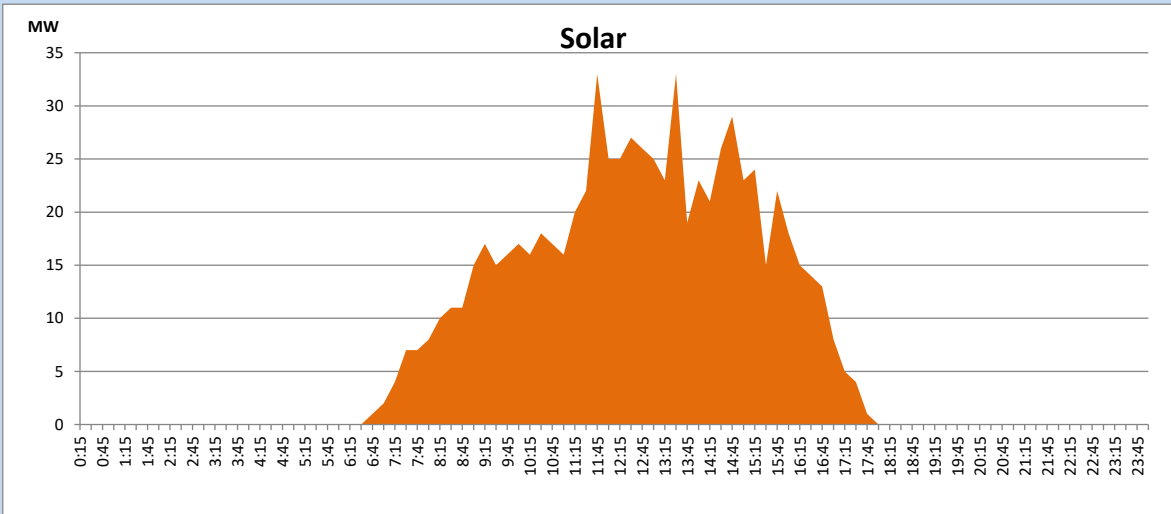
Based on Telemetered Power Stations only



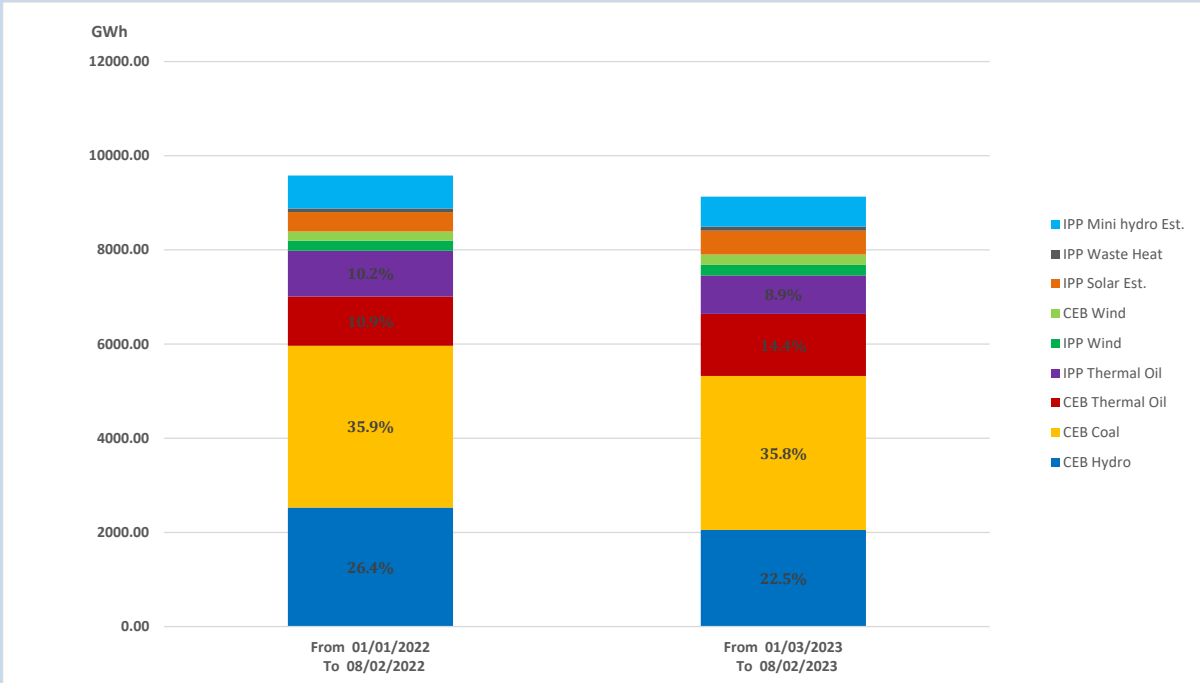
Solar Generation during

August 2, 2023

Based on Telemetered Power Stations only



15. Cumulative Dispatch Comparison with Last Year



Cumulative dispatch

From 01/01/2022 To 08/02/2022

9578 GWh

From 01/01/2023 To 08/02/2023

9132 GWh

The above figures are including contribution from roof top solar, non telemetered solar and mini hydro plants

Thermal Plant Fuel types

Power Station	Primary Fuel
CEB Thermal	
Sapugaskanda 1	Heavy Fuel
Sapugaskanda 2	Heavy Fuel
Kelanitissa Small Gas Turbines	Auto Diesel
GT 7 - Kelanitissa	Auto Diesel
Kelanitissa CCY	Naphtha or Diesel
Lakvijaya 1	Coal
Lakvijaya 2	Coal
Lakvijaya 3	Coal
Uthuru Janani	Heavy Fuel
Barge CEB	Heavy Fuel
KCCPS -2	Auto Diesel

Power Station	Primary Fuel
Private Thermal	
West Coast	Auto Diesel / Heavy Fuel

Major Incidents reported during the day

August 2, 2023

- 1) Biyagama – Sapugaskanda PS 132kV cct 01 was manually switched off at 15:10hrs due to an oil leakage in the Sapugaskanda PS line bay CB at Biyagama GSS. The cct is yet to be normalized.
- 2) Pannipitiya 220/132/33kV T/F 02 was manually switched off at 20:36hrs due to an emergency clearance purpose inside the GSS. The T/F was restored at 20:48hrs.