

# Generation and Reservoirs Statistics

August 1, 2023



PUBLIC UTILITIES COMMISSION OF SRI LANKA

## 1. Daily Generation Mix in MWh

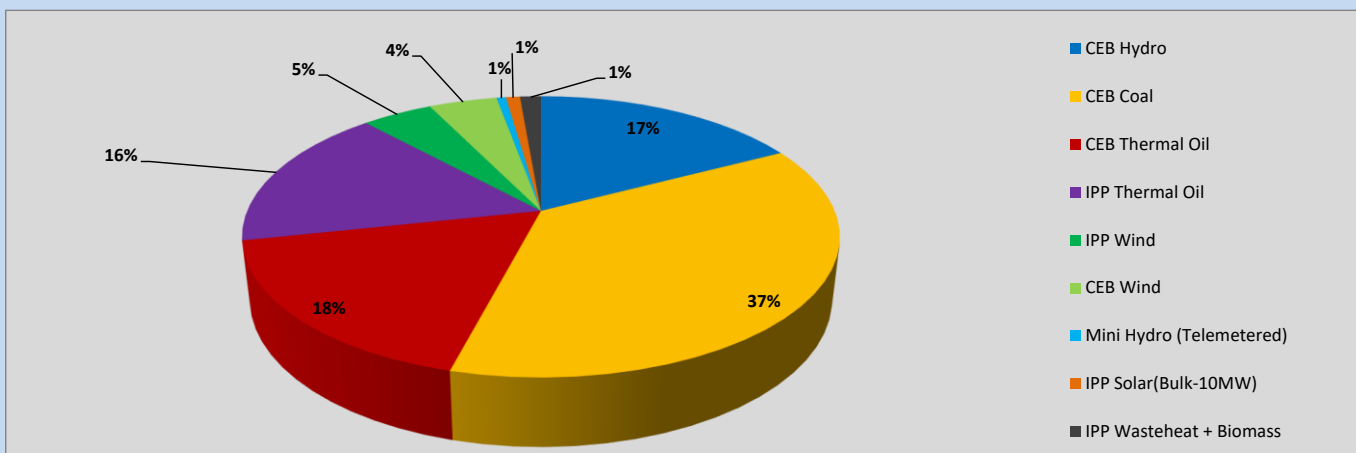


Table 01

|   |               |            |
|---|---------------|------------|
| CEB Hydro   | 6,139         | MWh        |
| CEB Coal  | 12,999        | MWh        |
| CEB Thermal Oil                                       | 6,212         | MWh        |
| IPP Thermal Oil                                       | 5,835         | MWh        |
| IPP Wind  | 1,621         | MWh        |
| CEB Wind  | 1,562         | MWh        |
| Mini Hydro (Telemetered)                              | 213           | MWh        |
| IPP Solar (Bulk)                                      | 323           | MWh        |
| IPP Wasteheat + Biomass                               | 478           | MWh        |
| <b>Total Generation (Excluding estimated figures)</b> | <b>35,382</b> | <b>MWh</b> |
| * Estimated unserved energy                           | 0             | MWh        |
| * Estimated Mini Hydro (Non telemetered)              | 3557          | MWh        |
| * Estimated IPP Solar PV (Bulk 1-10MW)                | 304           | MWh        |
| * Estimated Solar Roof Top PV                         | 1650          | MWh        |
| <b>Total Generation (Including estimated figures)</b> | <b>40,893</b> | <b>MWh</b> |

\* Estimated figures of CEB generation report

## 2. Cumulative Dispatch

Following data excludes the contribution from roof top solar, non telemetered solar and mini hydro plants

Table 02 - Current Month

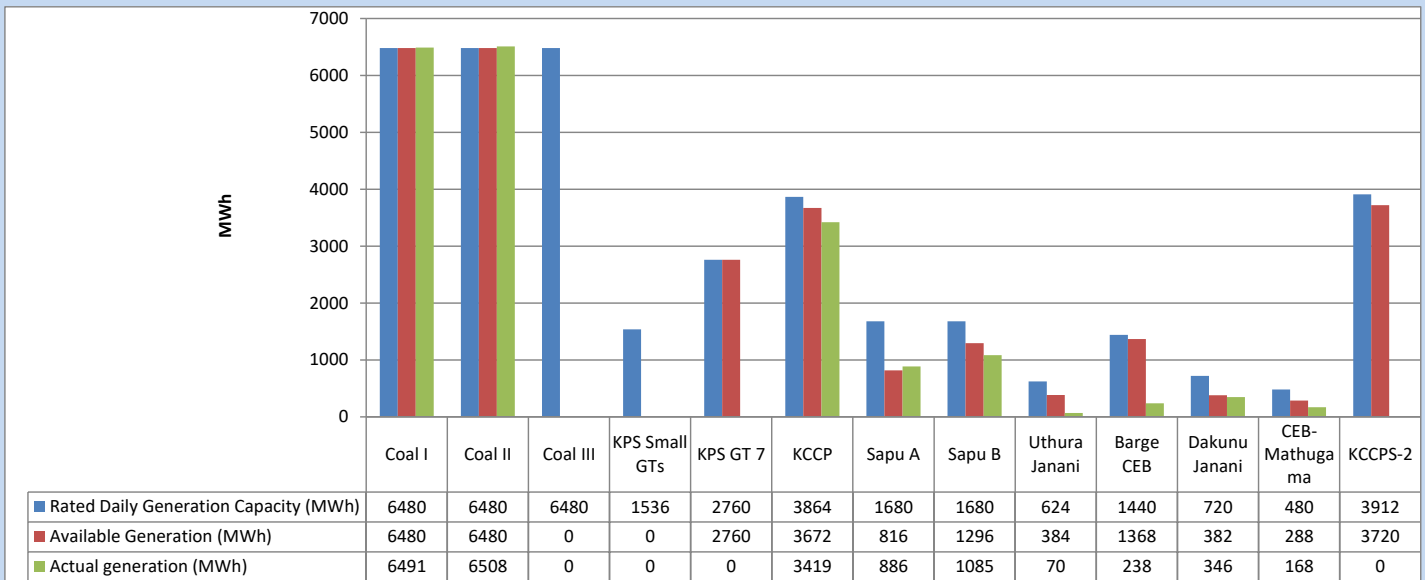
| Category                 | Dispatch (GWh) |        |
|--------------------------|----------------|--------|
| CEB Hydro                | 6              | 17.38% |
| CEB Coal                 | 13             | 36.74% |
| CEB Thermal Oil          | 6              | 17.55% |
| IPP Thermal              | 6              | 16.48% |
| SPP Wind                 | 2              | 4.58%  |
| CEB Wind                 | 2              | 4.41%  |
| Mini Hydro (Telemetered) | 0              | 0.59%  |
| IPP Solar(Bulk-10MW)     | 0              | 0.90%  |
| IPP Wasteheat + BMP      | 0              | 1.36%  |
| <b>Total</b>             | <b>35</b>      |        |

Table 03 - Current Year

| Category                 | Dispatch (GWh) |        |
|--------------------------|----------------|--------|
| CEB Hydro                | 2,053          | 25.02% |
| CEB Coal                 | 3,263          | 39.77% |
| CEB Thermal Oil          | 1,310          | 15.97% |
| IPP Thermal              | 810            | 9.87%  |
| SPP Wind                 | 212            | 2.58%  |
| CEB Wind                 | 218            | 2.66%  |
| Mini Hydro (Telemetered) | 201            | 2.45%  |
| IPP Solar(Bulk-10MW)     | 64             | 0.77%  |
| IPP Wasteheat            | 73             | 0.89%  |
| <b>Total</b>             | <b>8,203</b>   |        |

### 3. CEB owned Thermal Plant Dispatch

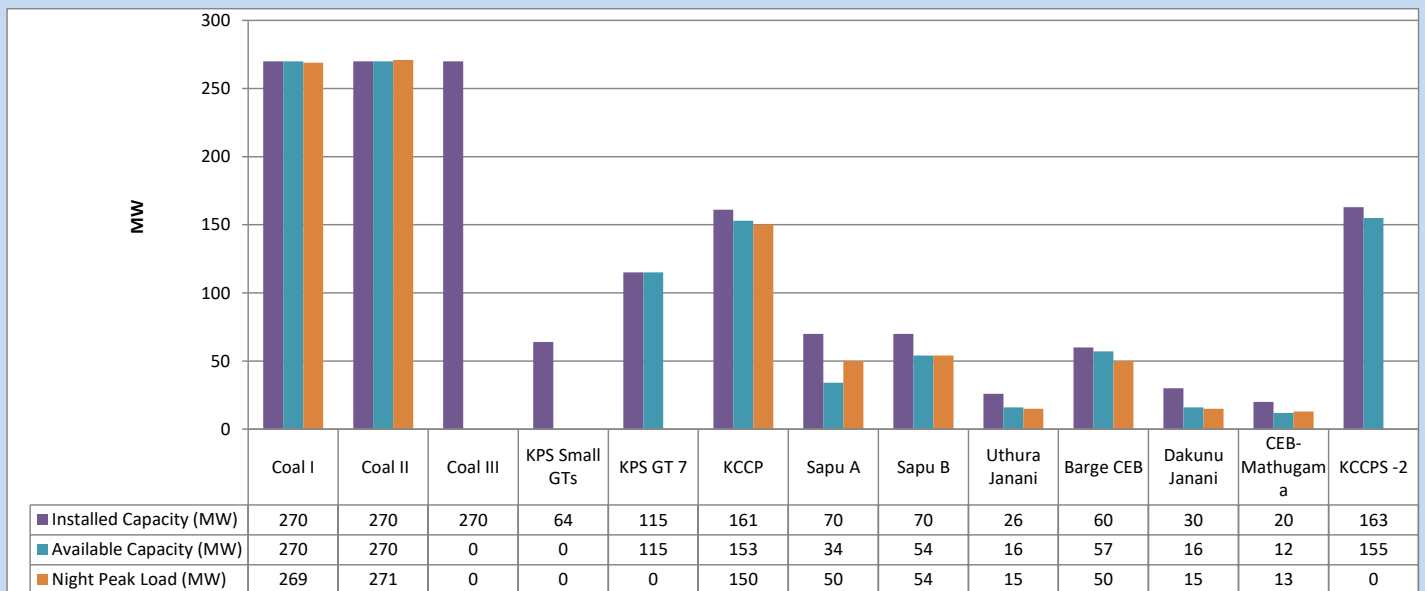
August 1, 2023



Available Generation is estimated based on plant availability at 6.00am on

August 2, 2023

### 4. CEB owned Thermal Plant Loading at the Night Peak

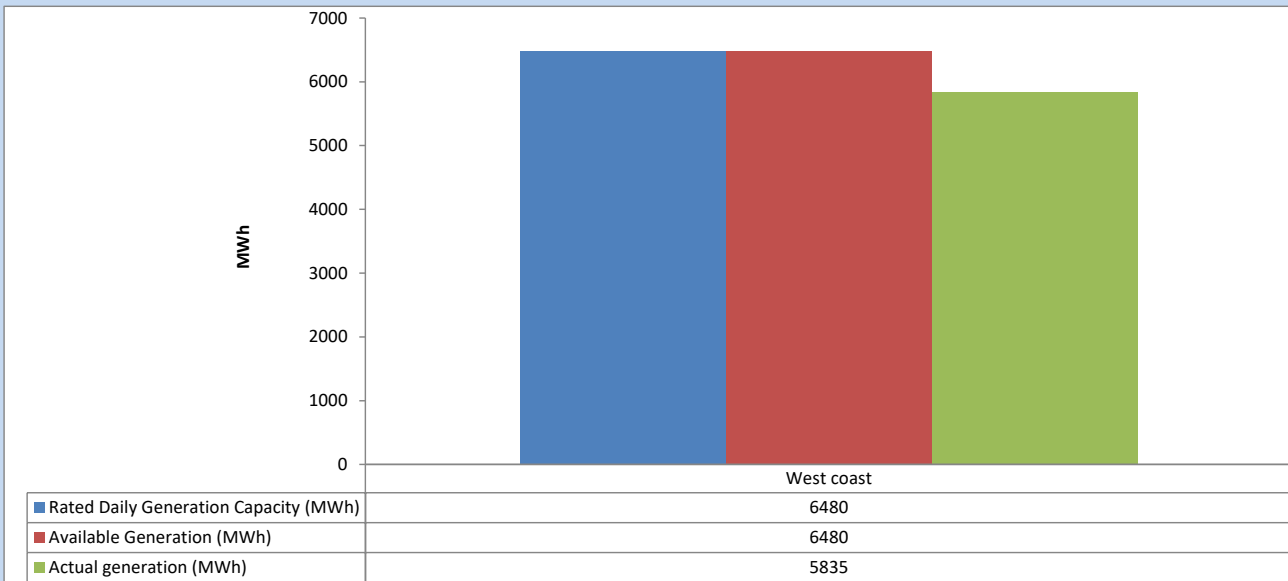


Plant availability is recorded at 6.00 am on

August 2, 2023

## 5. IPP owned Thermal Plant Dispatch

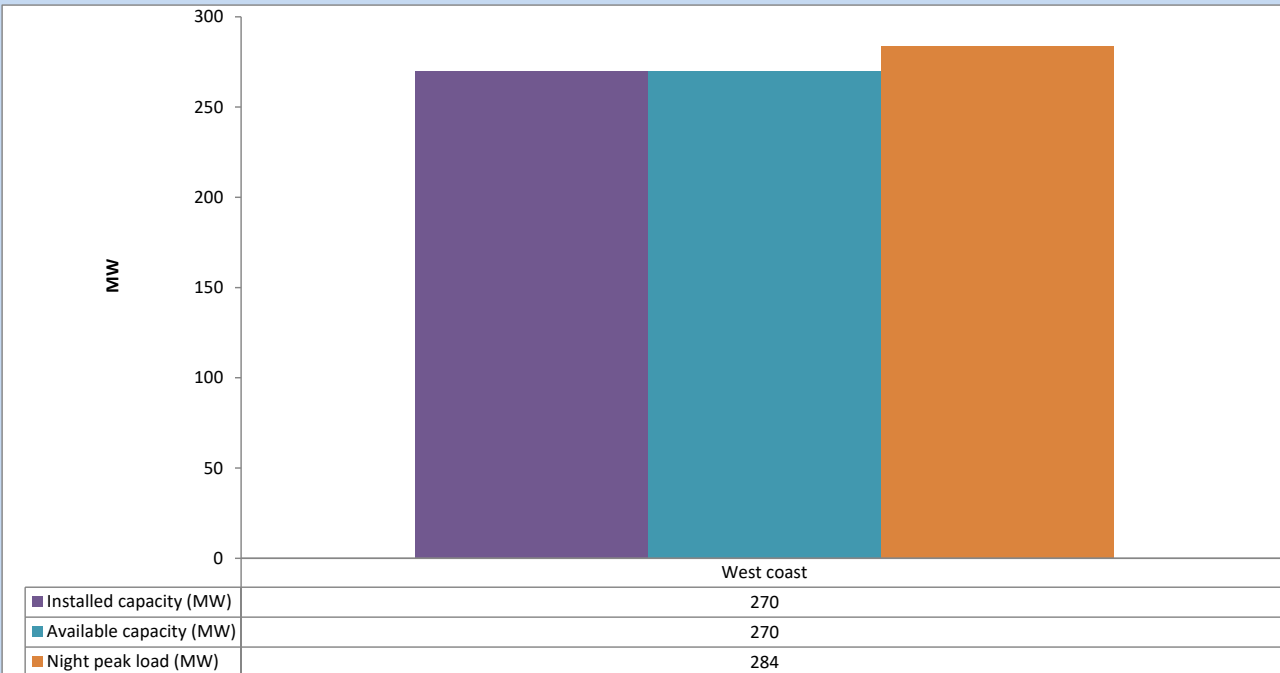
August 1, 2023



Available Generation is estimated based on plant availability at 6.00am on

August 2, 2023

## 6. IPP owned Thermal Plant Loading at the Night Peak

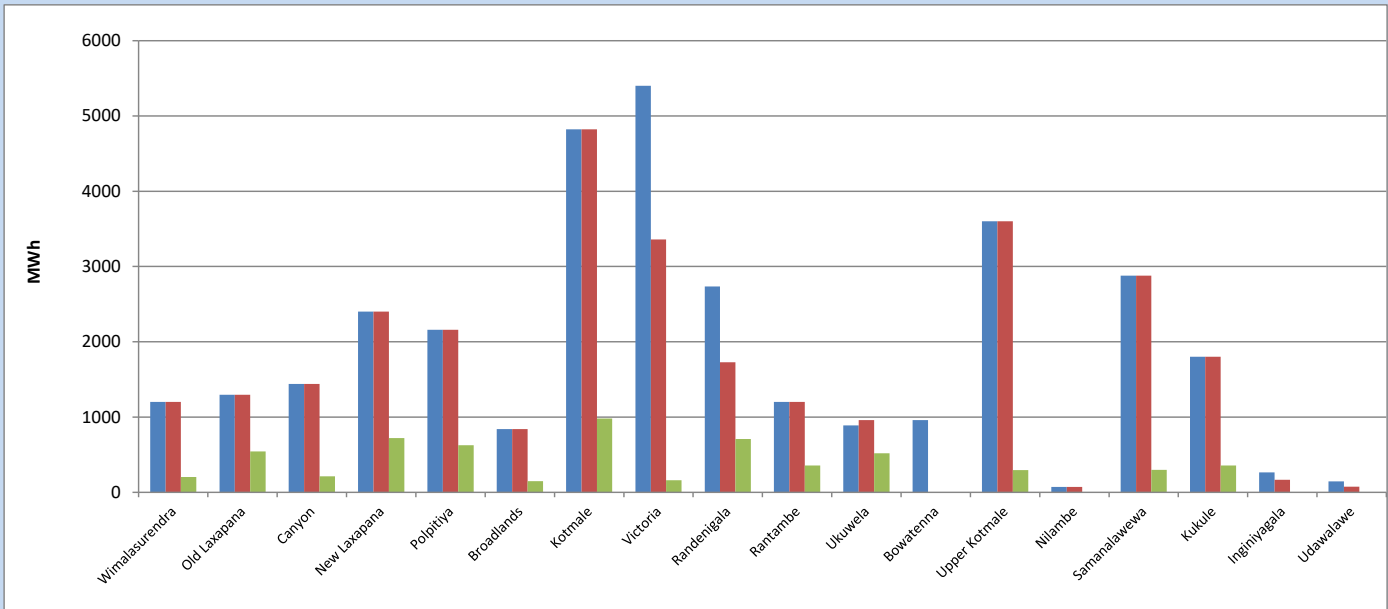


Plant availability is recorded at 6.00 am on

August 2, 2023

## 7. Major Hydro Plant Dispatch

August 1, 2023

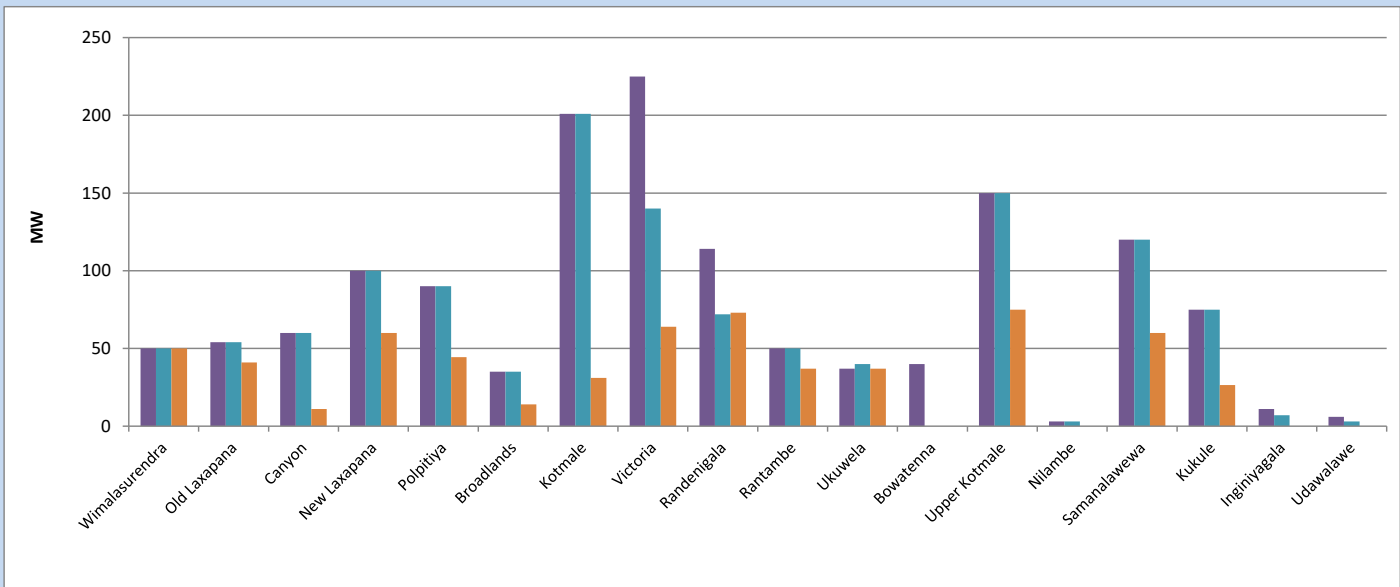


Available Generation is estimated based on plant availability at 6.00am on August 2, 2023  
Broadlands power plant is operating in the Commissioning Stage

August 2, 2023

## 8. Major Hydro Plant Loading at Night Peak

August 1, 2023



Plant availability is recorded at 6.00 am on August 2, 2023  
Broadlands power plant is operating in the Commissioning Stage

August 2, 2023

## 9. Summary of Major Plant performance

**Table 04**

| Plant             | Installed Capacity | Plant Availability | Night peak Load | Plant Dispatch |
|-------------------|--------------------|--------------------|-----------------|----------------|
|                   | (MW)               | (MW)               | (MW)            | (MWh)          |
| Wimalasurendra    | 50                 | 50                 | 50              | 204            |
| Old Laxapana      | 54                 | 54                 | 41              | 543            |
| Canyon            | 60                 | 60                 | 11              | 214            |
| New Laxapana      | 100                | 100                | 60              | 720            |
| Polpitiya         | 90                 | 90                 | 44              | 627            |
| Broadlands        | 35                 | 35                 | 14              | 149            |
| Kotmale           | 201                | 201                | 31              | 981            |
| Victoria          | 225                | 140                | 64              | 162            |
| Randenigala       | 114                | 72                 | 73              | 709            |
| Rantambe          | 50                 | 50                 | 37              | 358            |
| Ukuwela           | 37                 | 40                 | 37              | 520            |
| Bowatenna         | 40                 | 0                  | 0               | 0              |
| Upper Kotmale     | 150                | 150                | 75              | 295            |
| Nilambe           | 3                  | 3                  | 0               | 0              |
| Samanalawewa      | 120                | 120                | 60              | 299            |
| Kukule            | 75                 | 75                 | 26              | 358            |
| Inginiyagala      | 11                 | 7                  | 0               | 0              |
| Udawalawe         | 6                  | 3                  | 0               | 0              |
| Puttalam Coal I   | 270                | 270                | 269             | 6,491          |
| Puttalam Coal II  | 270                | 270                | 271             | 6,508          |
| Puttalam Coal III | 270                | 0                  | 0               | 0              |
| KPS Small GTs     | 64                 | 0                  | 0               | 0              |
| KPS GT 7          | 115                | 115                | 0               | 0              |
| KCCP              | 161                | 153                | 150             | 3,419          |
| Sapugaskanda A    | 70                 | 34                 | 50              | 886            |
| Sapugaskanda B    | 70                 | 54                 | 54              | 1,085          |
| Uthura Janani     | 26                 | 16                 | 15              | 70             |
| Barge CEB         | 60                 | 57                 | 50              | 238            |
| CEB-Hambantota    | 30                 | 16                 | 15              | 346            |
| CEB-Mathugama     | 20                 | 12                 | 13              | 168            |
| ACE Matara        | 24                 | 0                  | 0               | 0              |
| Asia Power        | 50                 | 0                  | 0               | 0              |
| KCCPS -2          | 163                | 155                | 0               | 0              |
| West Coast        | 270                | 270                | 284             | 5,835          |
| Nothern Power     | 36                 | 0                  | 0               | 0              |
| ACE Embilipitiya  | 93                 | 0                  | 0               | 0              |
| <b>Total</b>      | <b>3,483</b>       | <b>2,672</b>       | <b>1,954</b>    | <b>35,382</b>  |

Plant availability is the availability recorded at 6 am on

August 2, 2023

### 10. Contribution to the Night Peak in MW

August 1, 2023

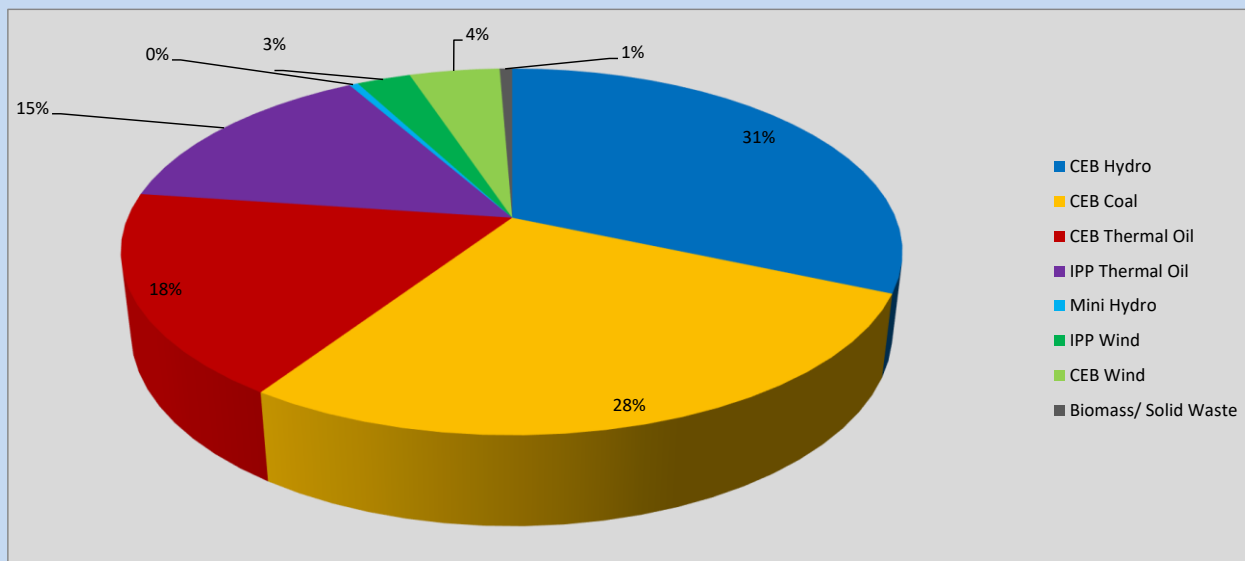


Table 05

|                          |         |
|--------------------------|---------|
| CEB Hydro                | 612 MW  |
| CEB Coal                 | 540 MW  |
| CEB Thermal Oil          | 347 MW  |
| IPP Thermal Oil          | 284 MW  |
| Mini Hydro (Telemetered) | 8 MW    |
| IPP Wind                 | 51.8 MW |
| CEB Wind                 | 86.7 MW |
| Biomass/ Solid Waste     | 12 MW   |

### Recorded Peak Demand Data

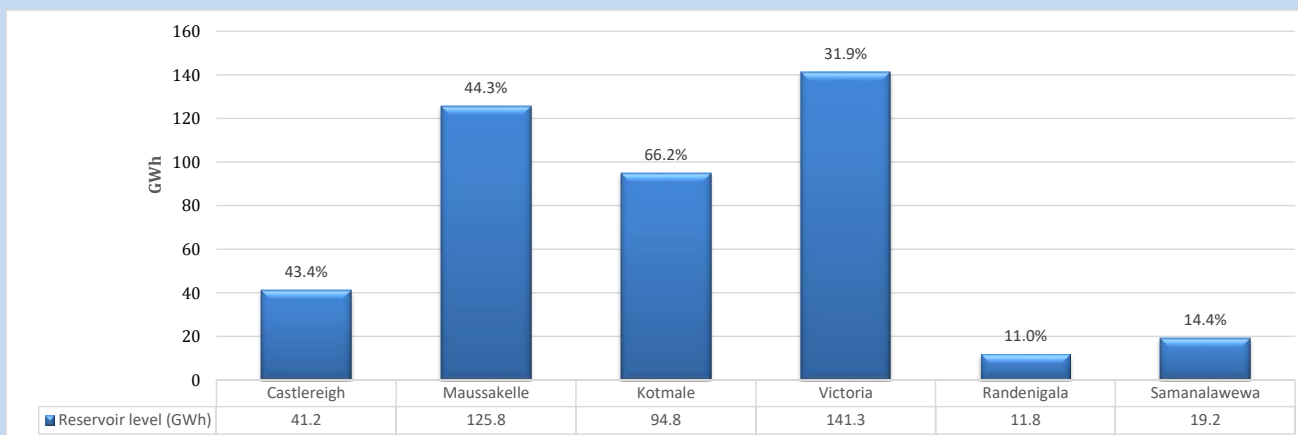
Table 06

|                         |          |
|-------------------------|----------|
| Night Peak*             | 1,942 MW |
| Day Peak Maximum Demand | 1,346 MW |
| Day Peak Minimum Demand | 1,174 MW |
| Off Peak Minimum Demand | 1,301 MW |

Above figures are excluding contribution from roof top solar, non telemetered solar and mini hydro plants

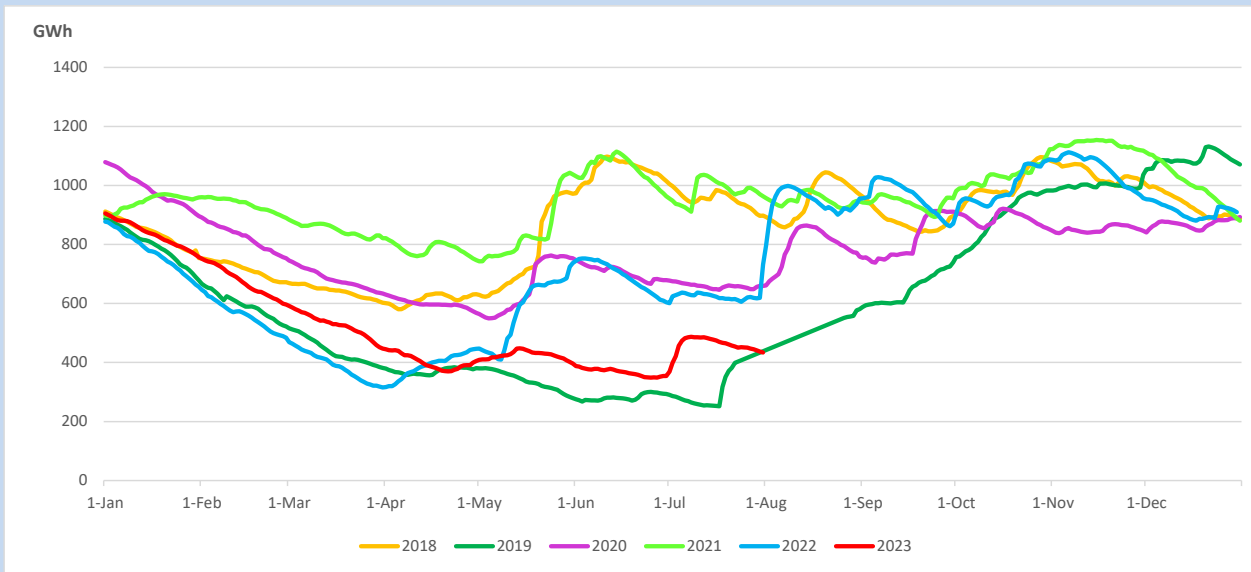
### Reservoir Levels -

as at 06.00 Hr on August 2, 2023

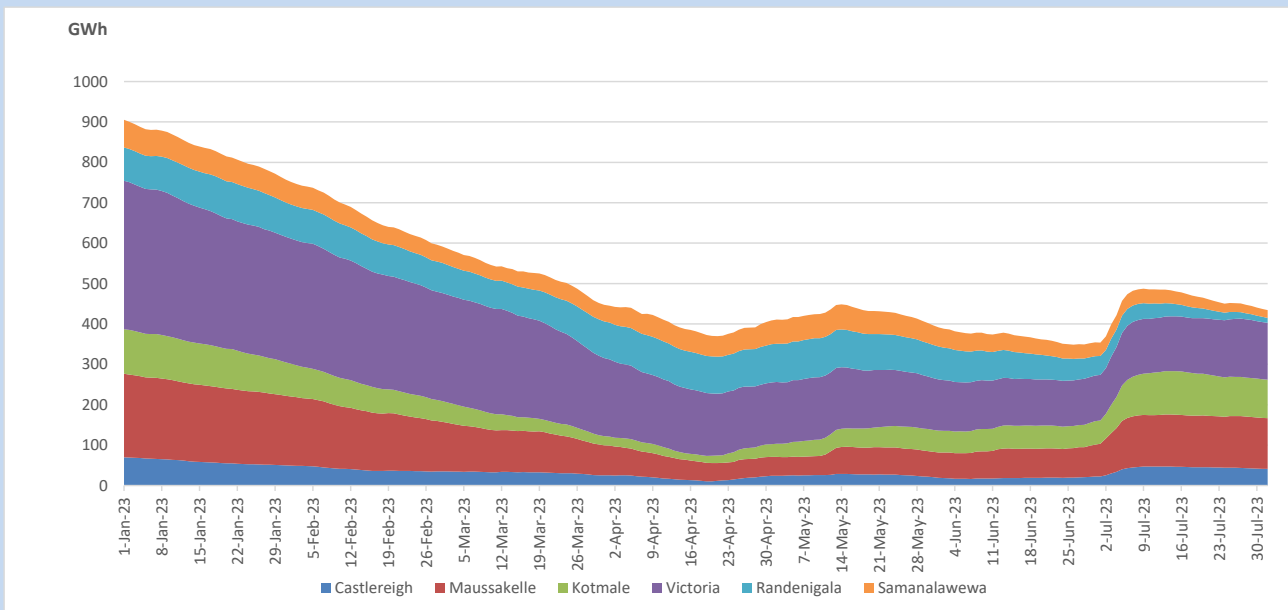


Total Reservoir Level 434.1 GWh  
 % of Total capacity 36.0%

## 11. Comparison of Total Reservoir Storage Levels with Past Years

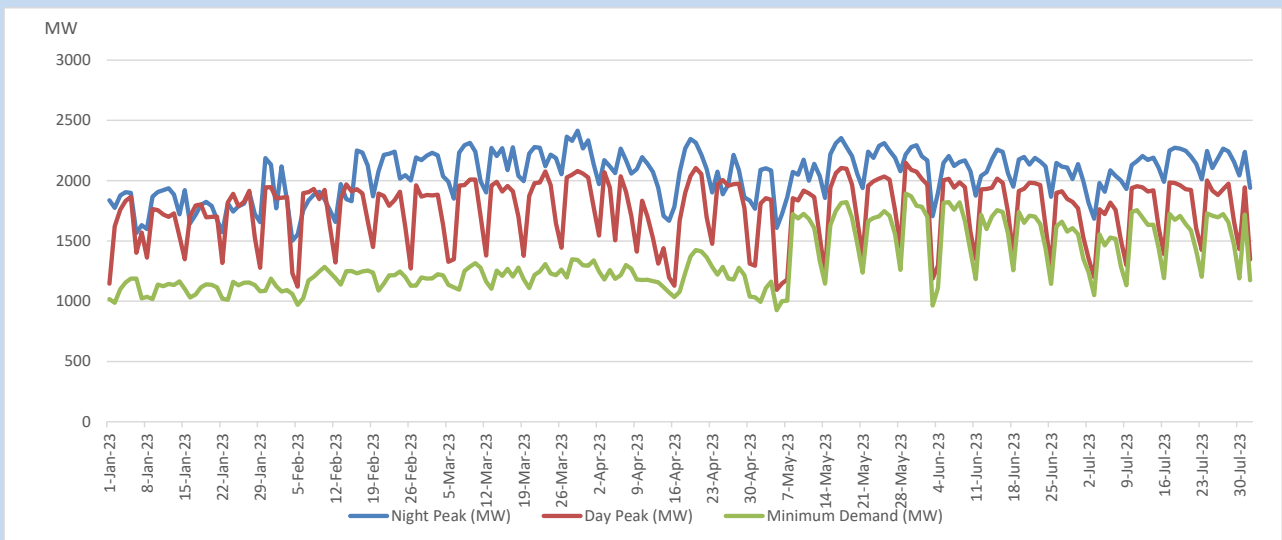


## 12. Variation of Major Hydro Reservoir Levels in the current year (GWh)





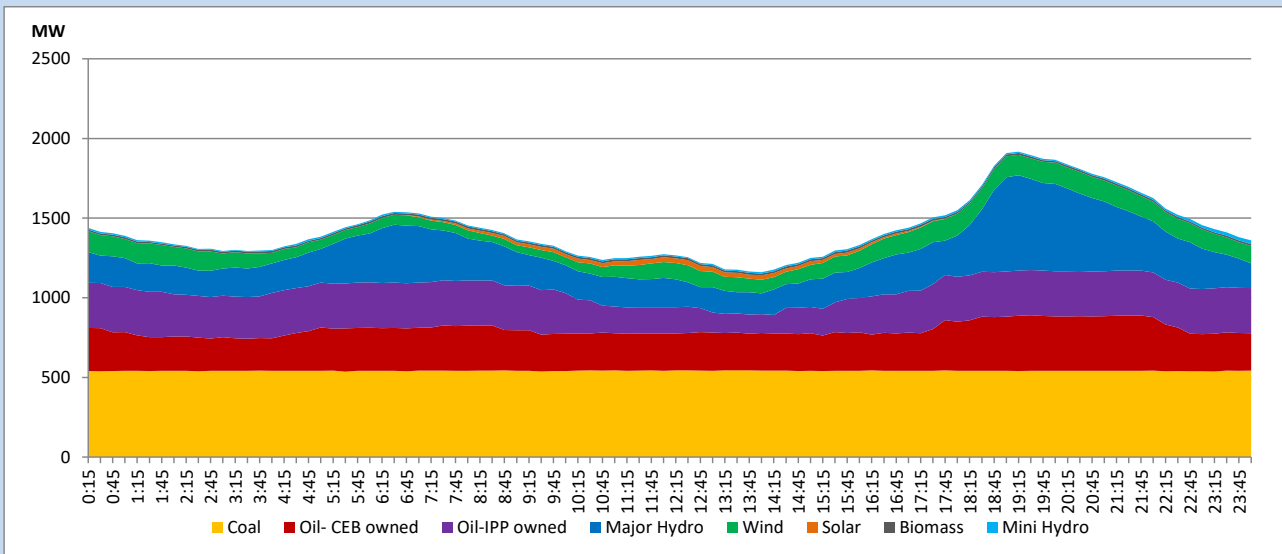
### 13. Variation of Demand during the current year



The above figures are excluding contribution from roof top solar, non telemetered solar and mini hydro plants

### 14. Daily Load Curve

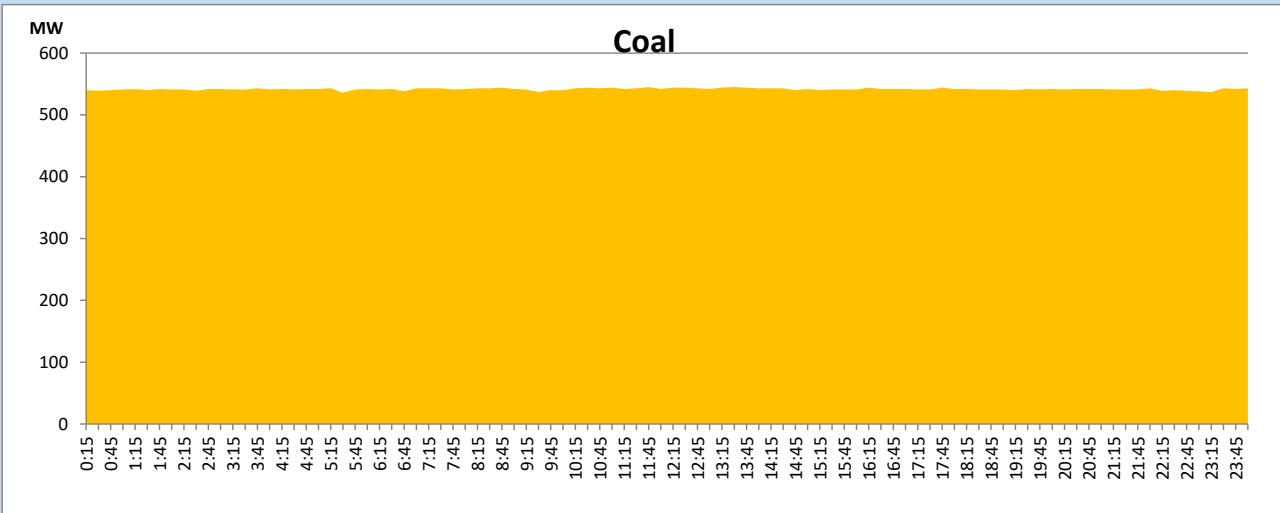
August 1, 2023



Solar and wind data is based on Telemetered Power Stations only

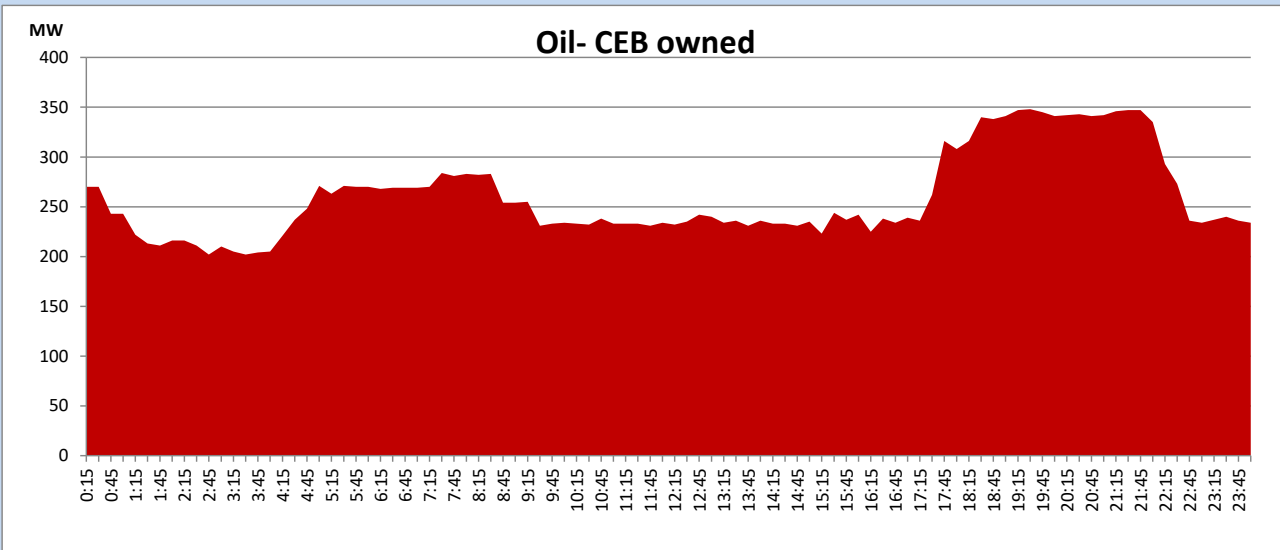
## Coal Generation during

August 1, 2023



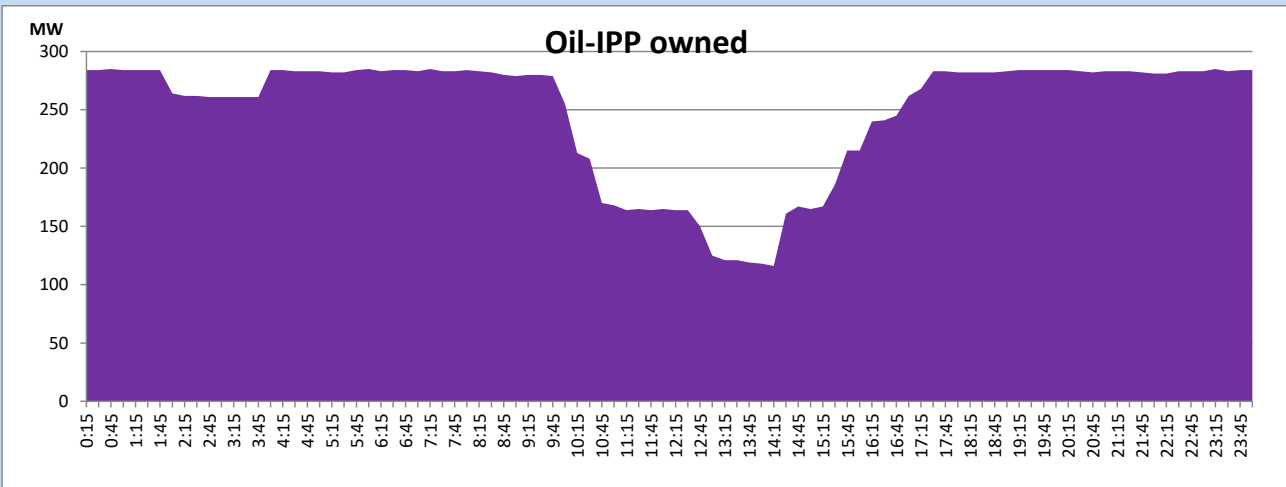
## CEB Oil Plant Generation during

August 1, 2023



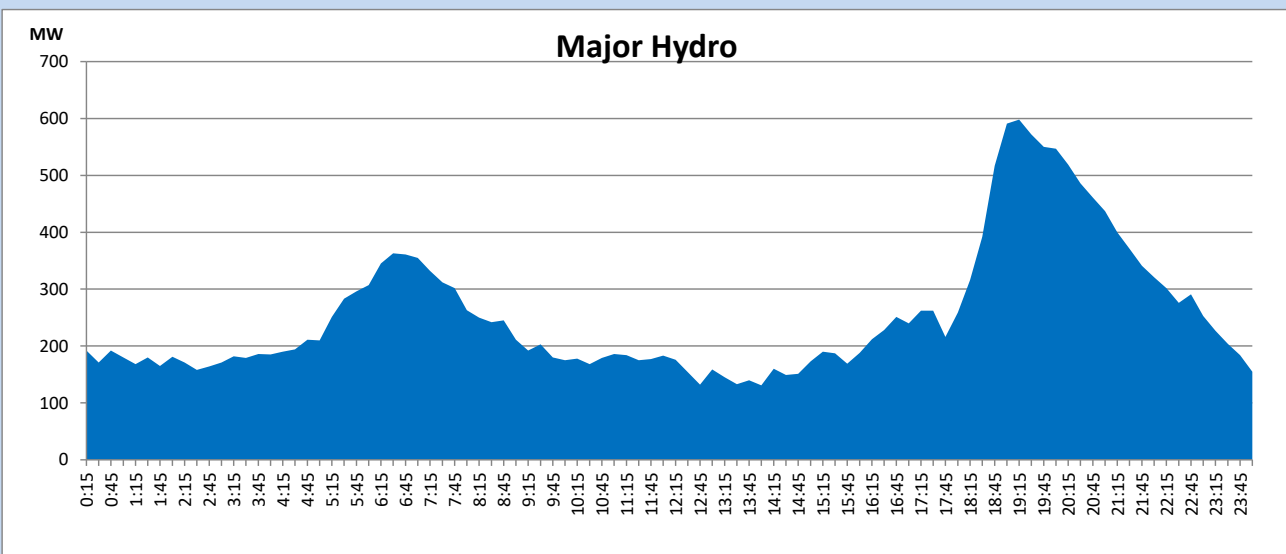
### IPP Oil Plant Generation during

August 1, 2023



### Major Hydro Generation during

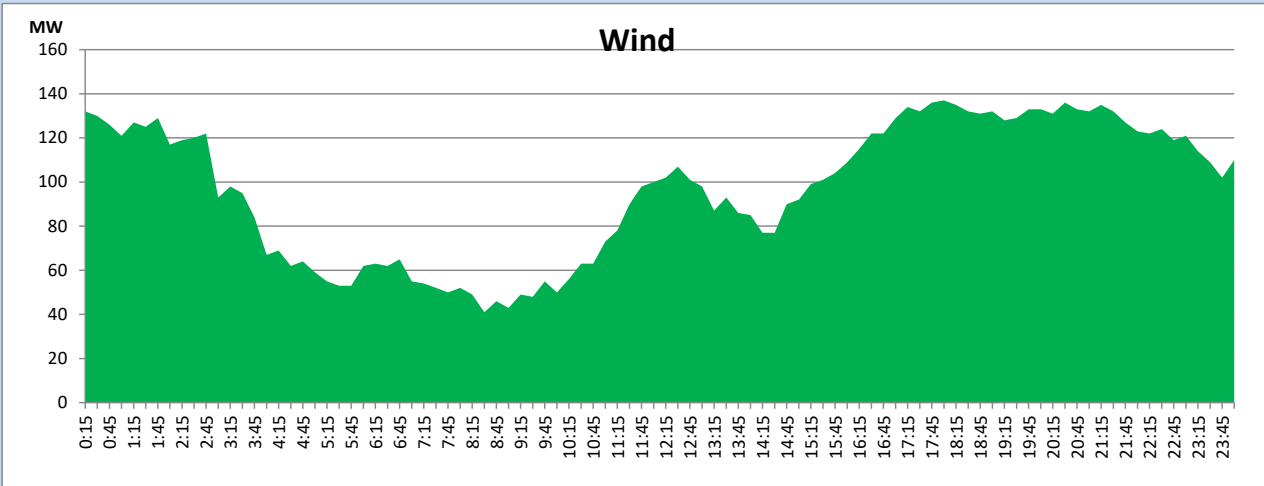
August 1, 2023



## Wind Generation during

August 1, 2023

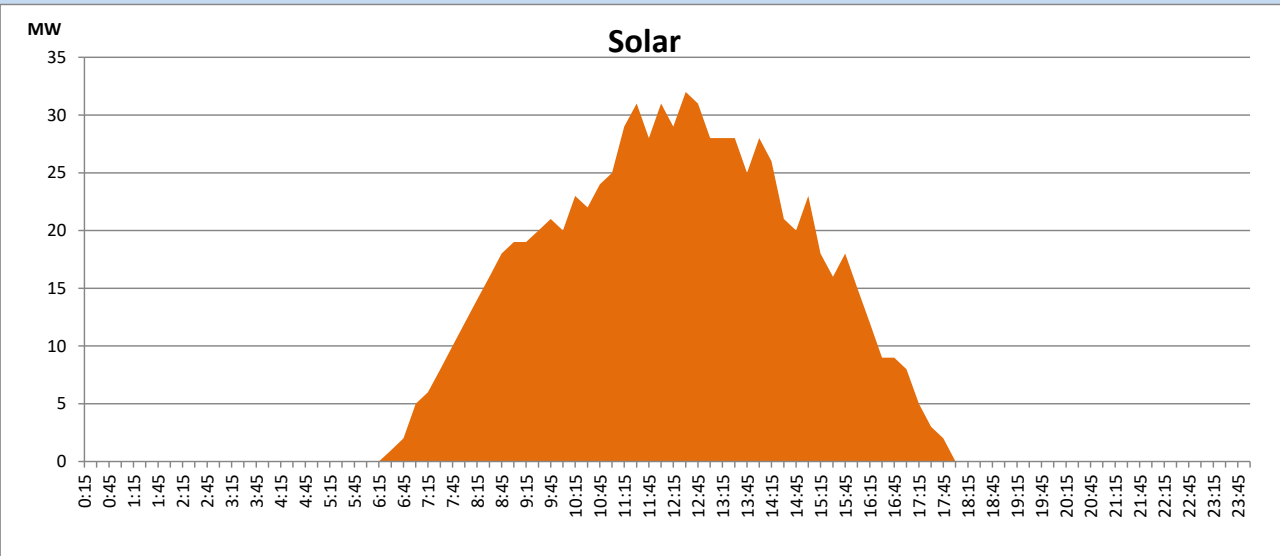
Based on Telemetered Power Stations only



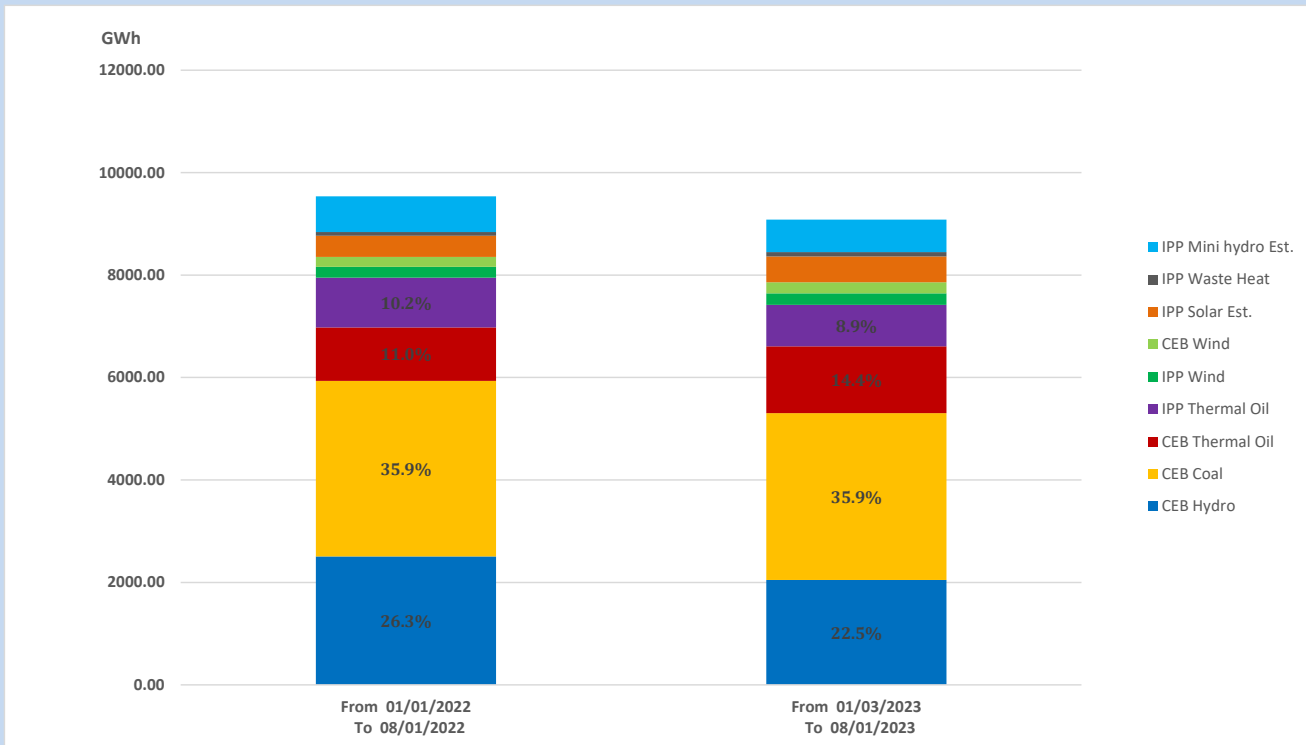
## Solar Generation during

August 1, 2023

Based on Telemetered Power Stations only



## 15. Cumulative Dispatch Comparison with Last Year



### Cumulative dispatch

From 01/01/2022 To 08/01/2022

9536 GWh

From 01/01/2023 To 08/01/2023

9085 GWh

The above figures are including contribution from roof top solar, non telemetered solar and mini hydro plants

**Thermal Plant Fuel types**

| <b>Power Station</b>                  | <b>Primary Fuel</b> |
|---------------------------------------|---------------------|
| <b>CEB Thermal</b>                    |                     |
| <b>Sapugaskanda 1</b>                 | Heavy Fuel          |
| <b>Sapugaskanda 2</b>                 | Heavy Fuel          |
| <b>Kelanitissa Small Gas Turbines</b> | Auto Diesel         |
| <b>GT 7 - Kelanitissa</b>             | Auto Diesel         |
| <b>Kelanitissa CCY</b>                | Naphtha or Diesel   |
| <b>Lakvijaya 1</b>                    | Coal                |
| <b>Lakvijaya 2</b>                    | Coal                |
| <b>Lakvijaya 3</b>                    | Coal                |
| <b>Uthuru Janani</b>                  | Heavy Fuel          |
| <b>Barge CEB</b>                      | Heavy Fuel          |
| <b>KCCPS -2</b>                       | Auto Diesel         |

| <b>Power Station</b>   | <b>Primary Fuel</b>      |
|------------------------|--------------------------|
| <b>Private Thermal</b> |                          |
| <b>West Coast</b>      | Auto Diesel / Heavy Fuel |

**Major Incidents reported during the day**

August 1, 2023

1) Nil.