

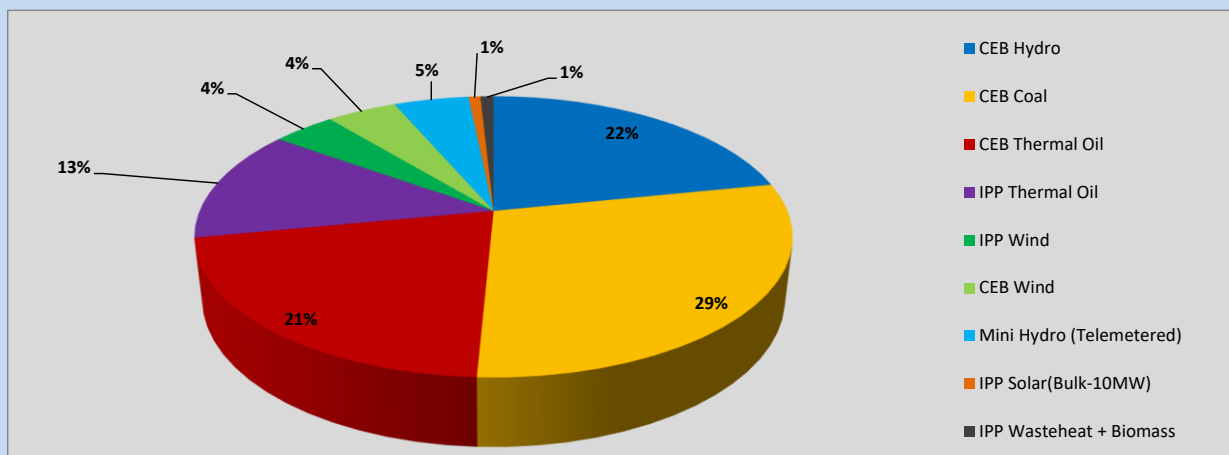
Generation and Reservoirs Statistics

June 30, 2023



PUBLIC UTILITIES COMMISSION OF SRI LANKA

1. Daily Generation Mix in MWh



CEB Hydro	8,485	MWh
CEB Coal	11,271	MWh
CEB Thermal Oil	8,263	MWh
IPP Thermal Oil	5,050	MWh
IPP Wind	1,585	MWh
CEB Wind	1,763	MWh
Mini Hydro (Telemetered)	1,887	MWh
IPP Solar (Bulk)	300	MWh
IPP Wasteheat + Biomass	331	MWh

Total Generation (Excluding estimated figures) 38,935 MWh

Estimated figures of CEB generation report

Estimated unserved energy = 0.00 GWh

Estimated Mini Hydro (Non telemetered) = 2193 MWh

Estimated IPP Solar PV (Bulk 1-10MW) = 304 MWh

Estimated Solar Roof Top PV = 1890 MWh

2. Cumulative Dispatch

Following data excludes the contribution from roof top solar, non telemetered solar and mini hydro plants

For Current Month

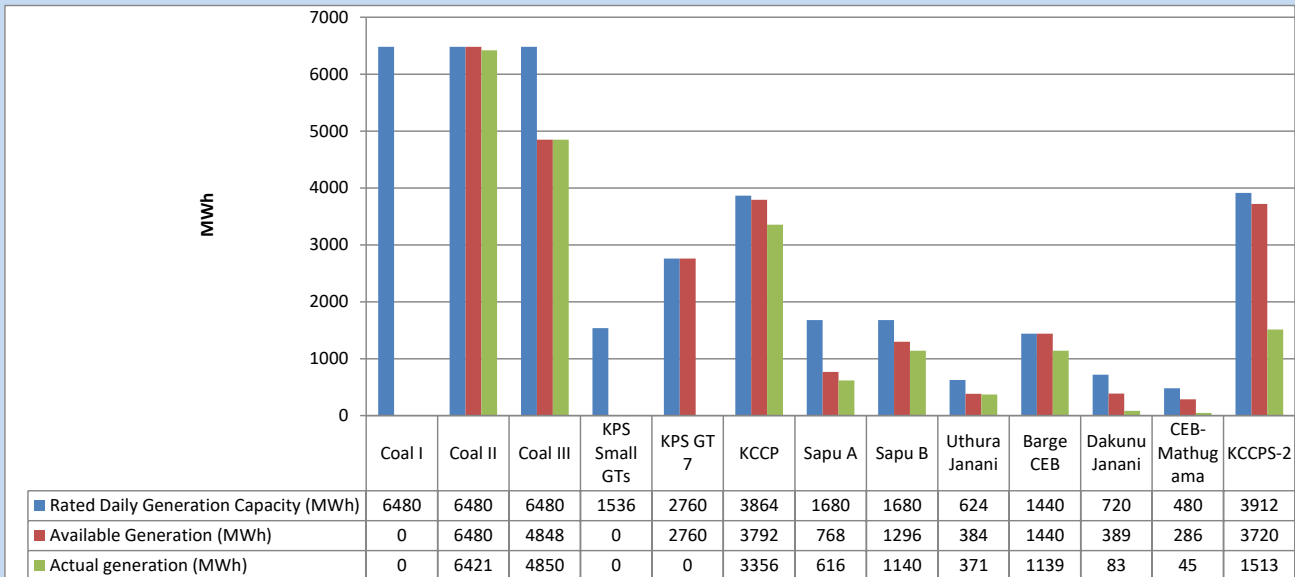
Category	Dispatch (GWh)	
CEB Hydro	257	21.53%
CEB Coal	388	32.48%
CEB Thermal Oil	236	19.77%
IPP Thermal	137	11.47%
SPP Wind	61	5.07%
CEB Wind	53	4.43%
Mini Hydro (Telemetered)	40	3.35%
IPP Solar(Bulk-10MW)	10	0.82%
IPP Wasteheat + BMP	13	1.08%
Total	1,195	

For Current Year

Category	Dispatch (GWh)	
CEB Hydro	1,738	25.00%
CEB Coal	2,883	41.46%
CEB Thermal Oil	1,084	15.58%
IPP Thermal	654	9.41%
SPP Wind	151	2.17%
CEB Wind	164	2.36%
Mini Hydro (Telemetered)	166	2.39%
IPP Solar(Bulk-10MW)	53	0.76%
IPP Wasteheat	60	0.86%
Total	6,953	

3. CEB owned Thermal Plant Dispatch

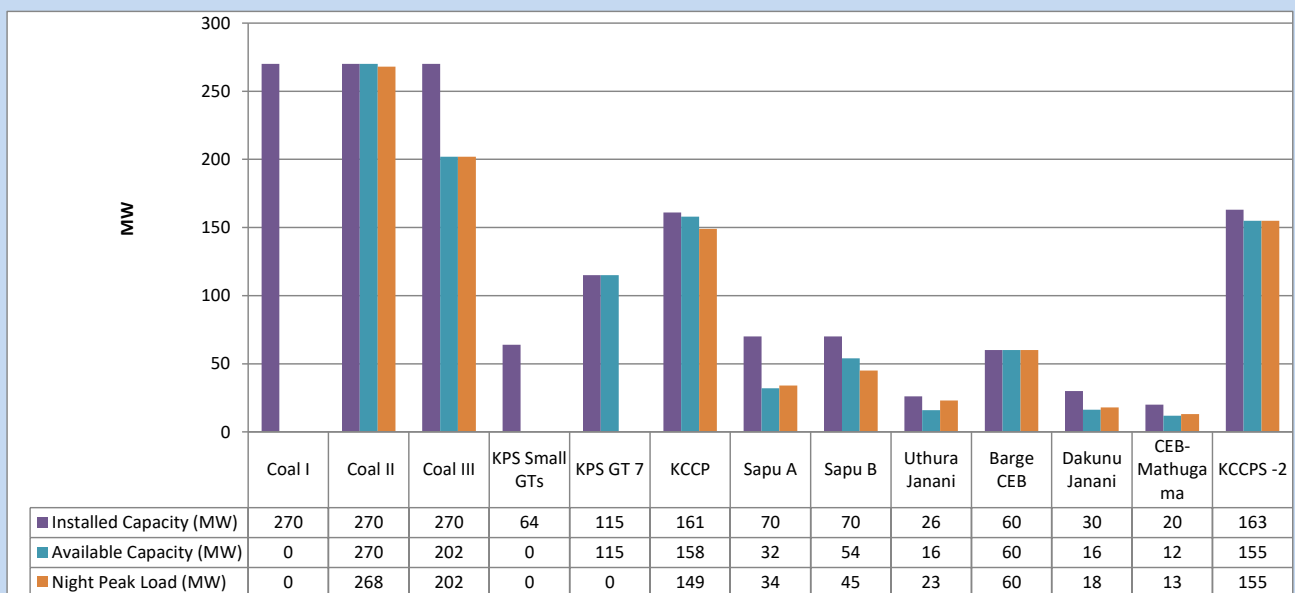
June 30, 2023



Available Generation is estimated based on plant availability at 6.00am on

July 1, 2023

4. CEB owned Thermal Plant Loading at the Night Peak

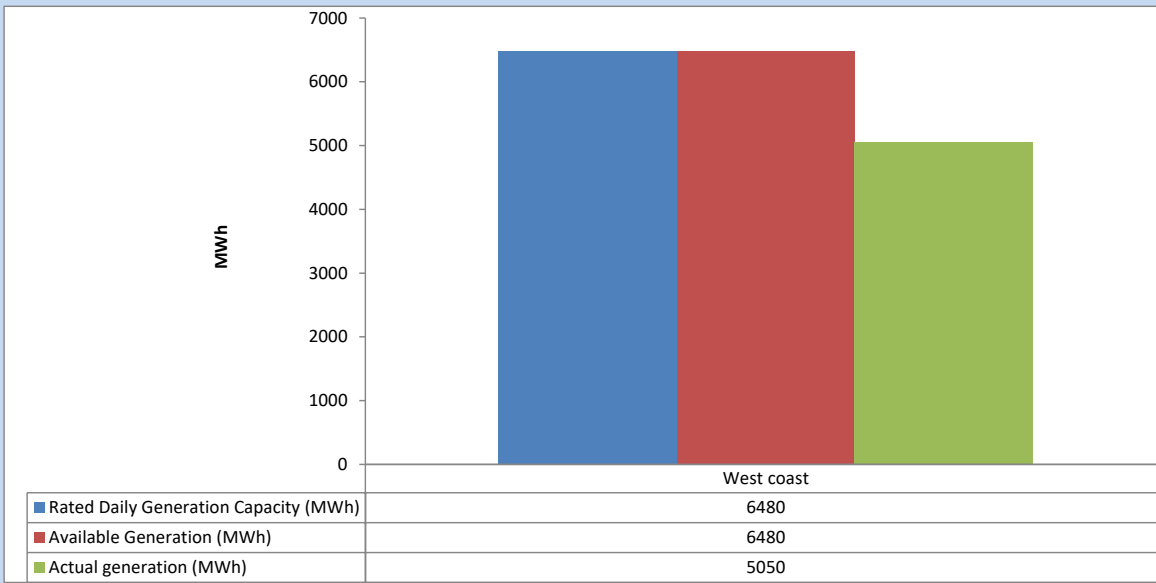


Plant availability is recorded at 6.00 am on

July 1, 2023

5. IPP owned Thermal Plant Dispatch

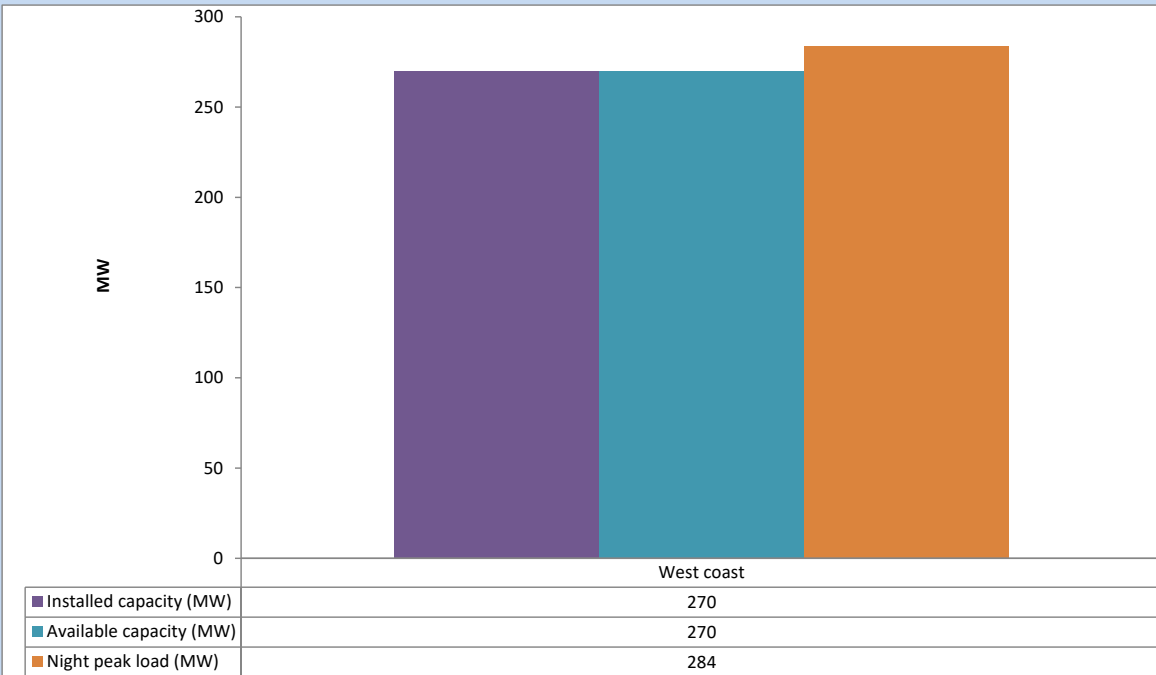
June 30, 2023



Available Generation is estimated based on plant availability at 6.00am on

July 1, 2023

6. IPP owned Thermal Plant Loading at the Night Peak

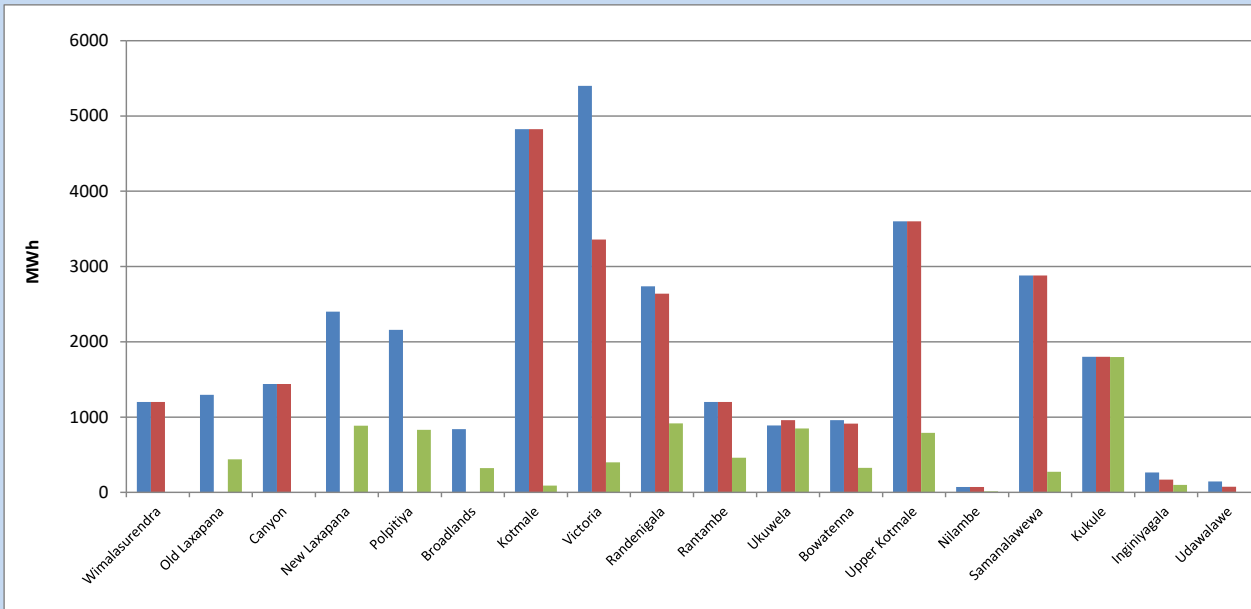


Plant availability is recorded at 6.00 am on

July 1, 2023

7. Major Hydro Plant Dispatch

June 30, 2023

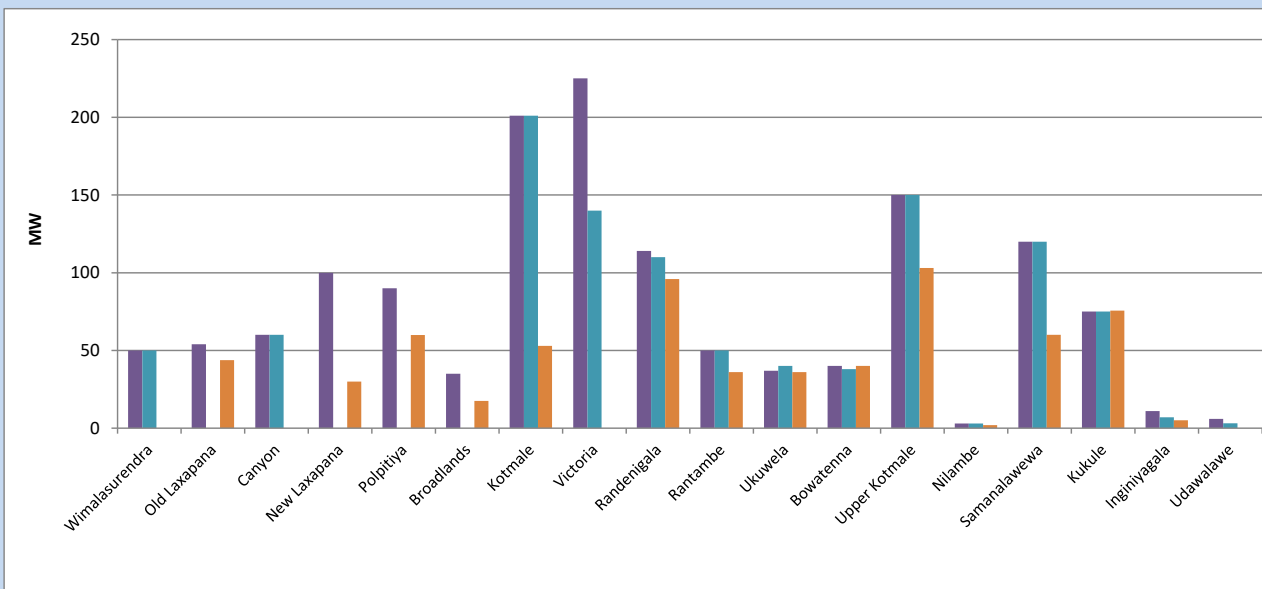


Available Generation is estimated based on plant availability at 6.00am on
Broadlands power plant is operating in the Commissioning Stage

July 1, 2023

8. Major Hydro Plant Loading at Night Peak

June 30, 2023



Plant availability is recorded at 6.00 am on
Broadlands power plant is operating in the Commissioning Stage

July 1, 2023

9. Summary of Major Plant performance

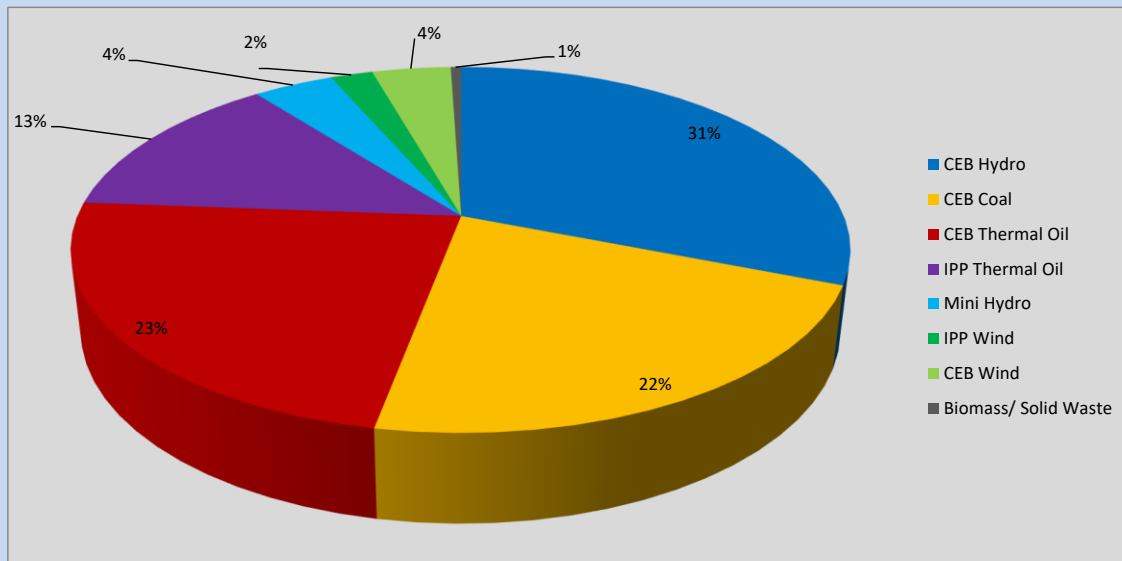
Plant	Installed Capacity	Plant Availability	Night peak Load	Plant Dispatch
	(MW)	(MW)	(MW)	(MWh)
Wimalasurendra	50	50	0	0
Old Laxapana	54	0	44	437
Canyon	60	60	0	0
New Laxapana	100	0	30	886
Polpitiya	90	0	60	830
Broadlands	35	0	18	321
Kotmale	201	201	53	90
Victoria	225	140	0	400
Randenigala	114	110	96	916
Rantambe	50	50	36	459
Ukuwela	37	40	36	849
Bowatenna	40	38	40	324
Upper Kotmale	150	150	103	792
Nilambe	3	3	2	14
Samanalawewa	120	120	60	272
Kukule	75	75	76	1,797
Inginiyagala	11	7	5	98
Udawalawe	6	3	0	0
Puttalam Coal I	270	0	0	0
Puttalam Coal II	270	270	268	6,421
Puttalam Coal III	270	202	202	4,850
KPS Small GTs	64	0	0	0
KPS GT 7	115	115	0	0
KCCP	161	158	149	3,356
Sapugaskanda A	70	32	34	616
Sapugaskanda B	70	54	45	1,140
Uthura Janani	26	16	23	371
Barge CEB	60	60	60	1,139
CEB-Hambantota	30	16	18	83
CEB-Mathugama	20	12	13	45
ACE Matara	24	0	0	0
Asia Power	50	0	0	0
KCCPS -2	163	155	155	1,513
West Coast	270	270	284	5,050
Nothern Power	36	0	0	0
ACE Embilipitiya	93	0	0	0
Total	3,483	2,407	2,133	38,935

Plant availability is the availability recorded at 6 am on

July 1, 2023

10. Contribution to the Night Peak in MW

June 30, 2023



CEB Hydro	662 MW
CEB Coal	470 MW
CEB Thermal Oil	497 MW
IPP Thermal Oil	284 MW
Mini Hydro (Telemetered)	85 MW
IPP Wind	44.7 MW
CEB Wind	83.3 MW
Biomass/ Solid Waste	11 MW

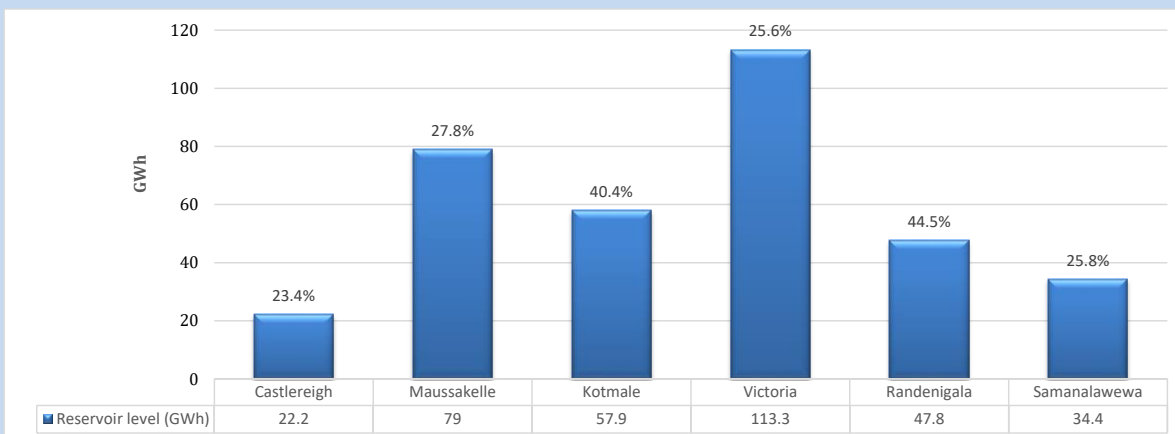
Recorded Peak Demand Data

Night Peak*	2,137 MW
Day Peak Maximum Demand	1,771 MW
Day Peak Minimum Demand	1,557 MW
Off Peak Minimum Demand	1,156 MW

Above figures are excluding contribution from roof top solar, non telemetered solar and mini hydro plants

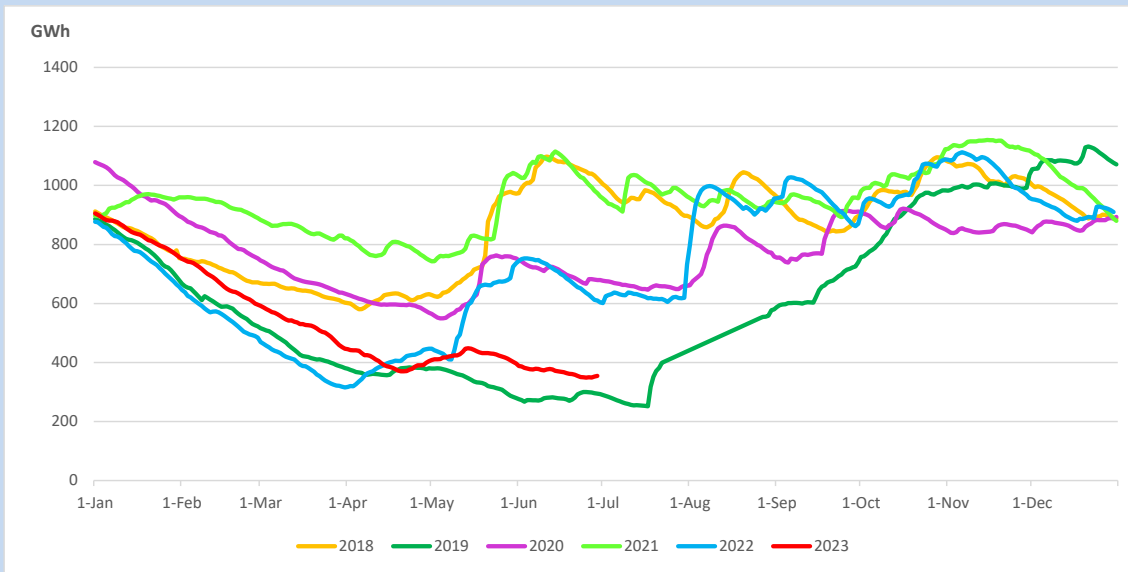
Reservoir Levels -

as at 06.00 Hr on July 1, 2023

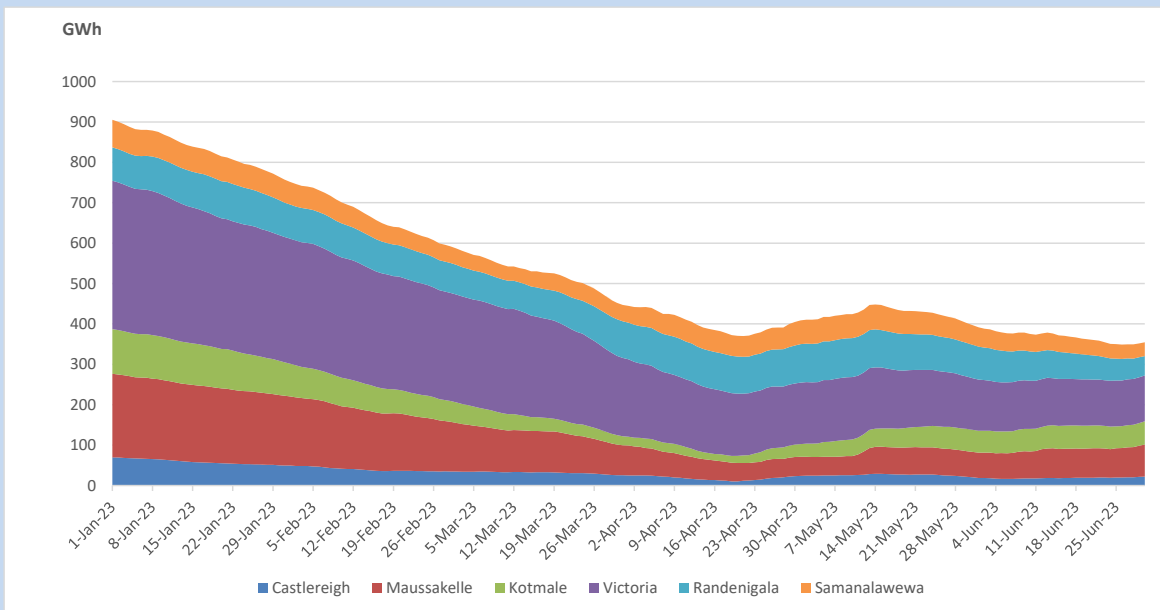


Total Reservoir Level	354.6 GWh
% of Total capacity	29.4%

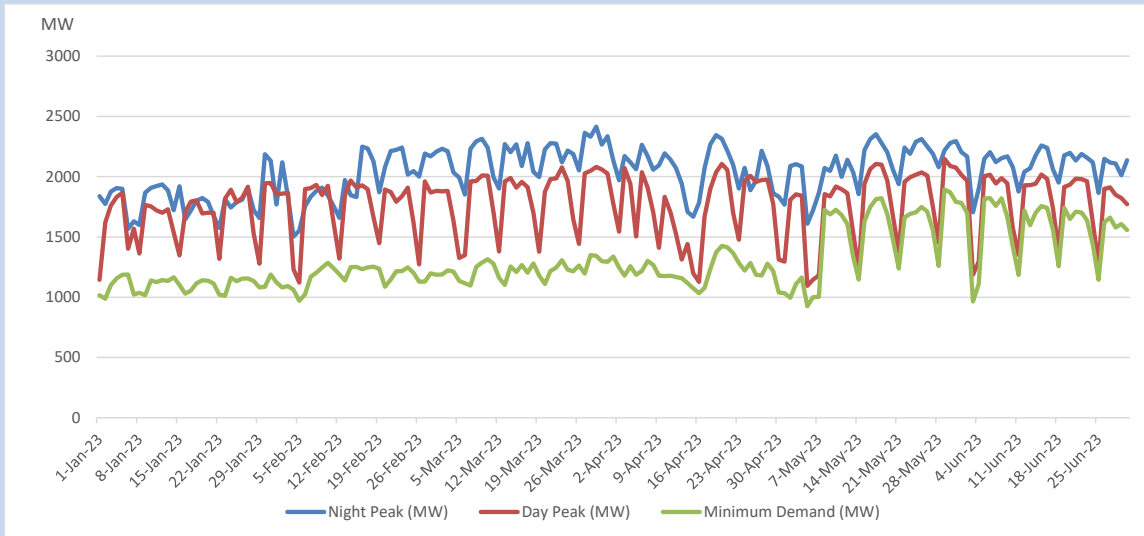
11. Comparison of Total Reservoir Storage Levels with Past Years



12. Variation of Major Hydro Reservoir Levels in the current year (GWh)



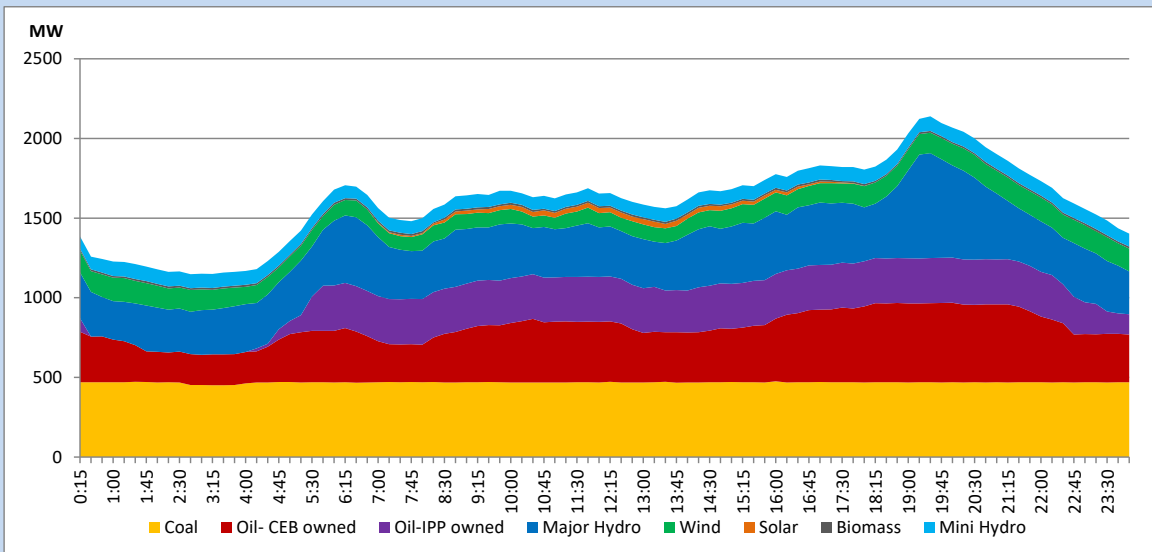
13. Variation of Demand during the current year



The above figures are excluding contribution from roof top solar, non telemetered solar and mini hydro plants

14. Daily Load Curve

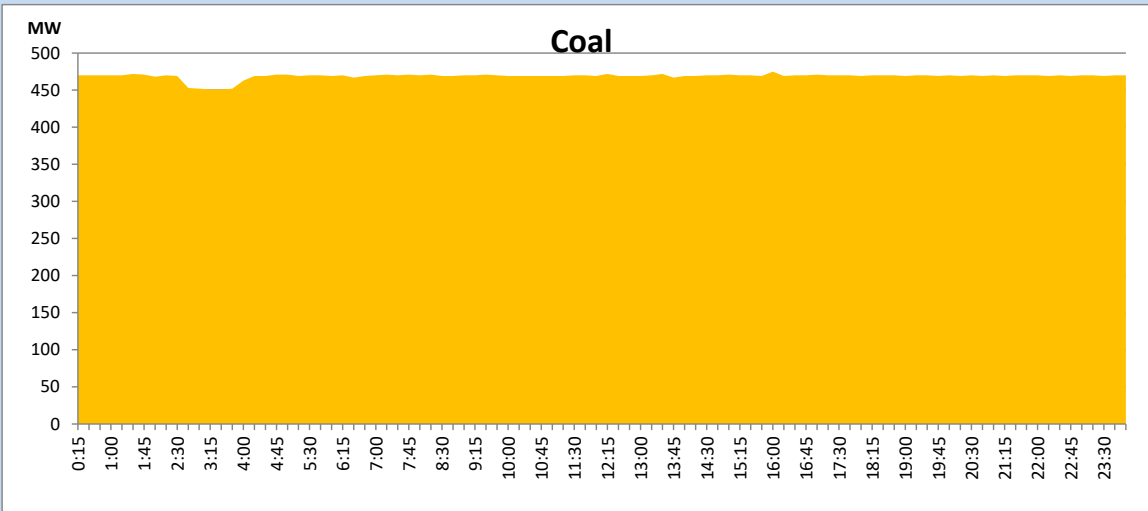
June 30, 2023



Solar and wind data is based on Telemetered Power Stations only

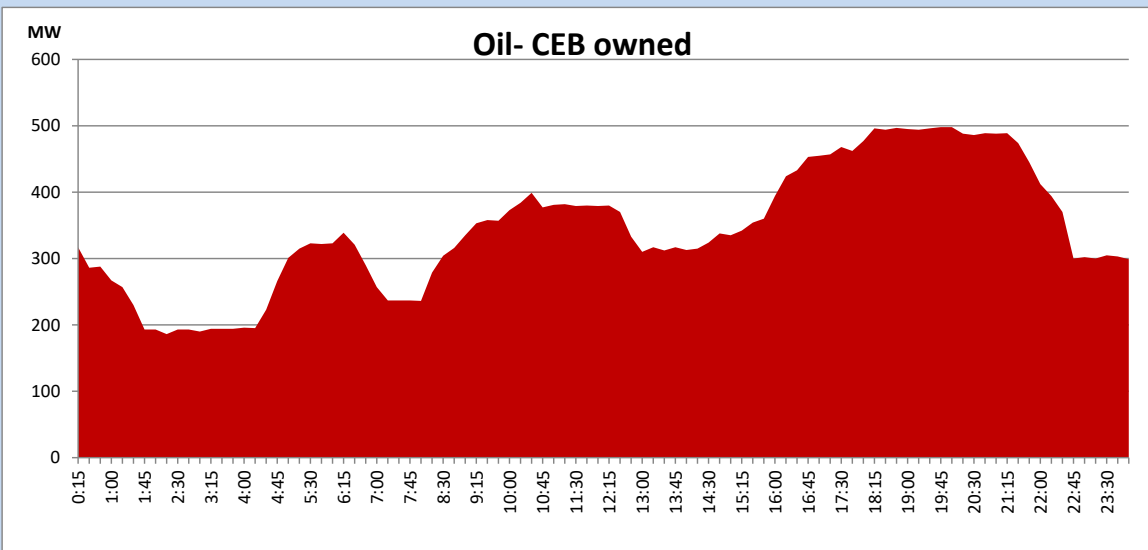
Coal Generation during

June 30, 2023



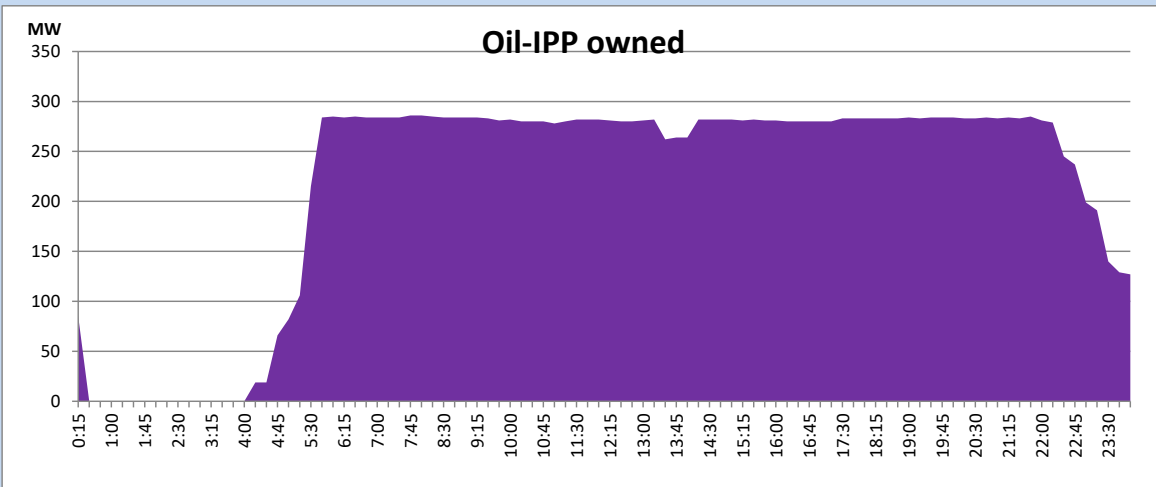
CEB Oil Plant Generation during

June 30, 2023



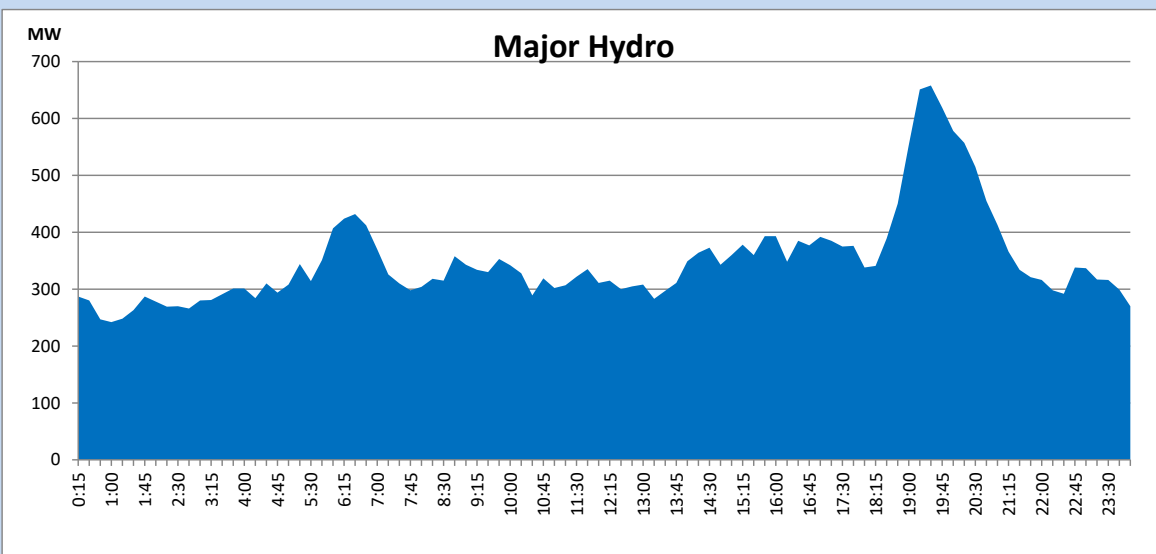
IPP Oil Plant Generation during

June 30, 2023



Major Hydro Generation during

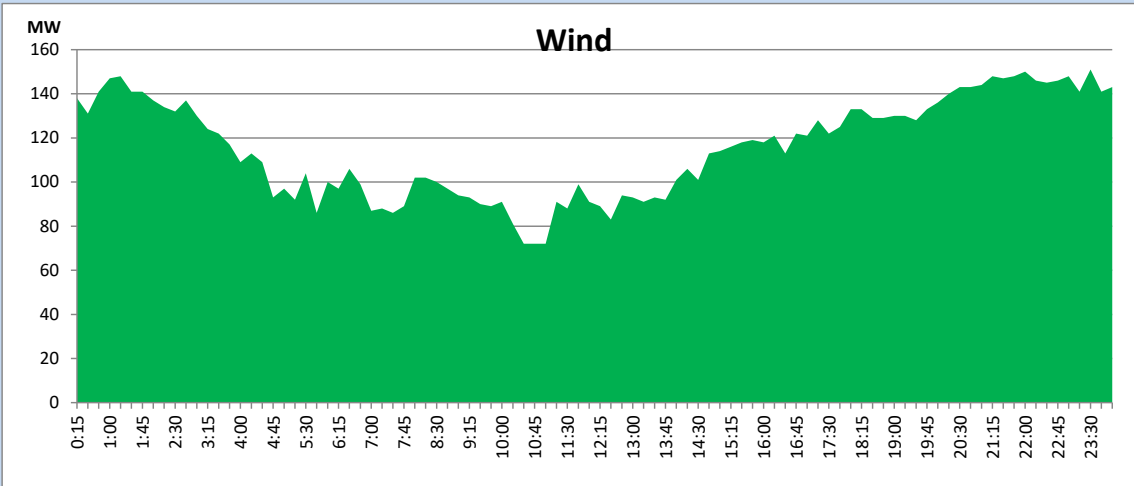
June 30, 2023



Wind Generation during

June 30, 2023

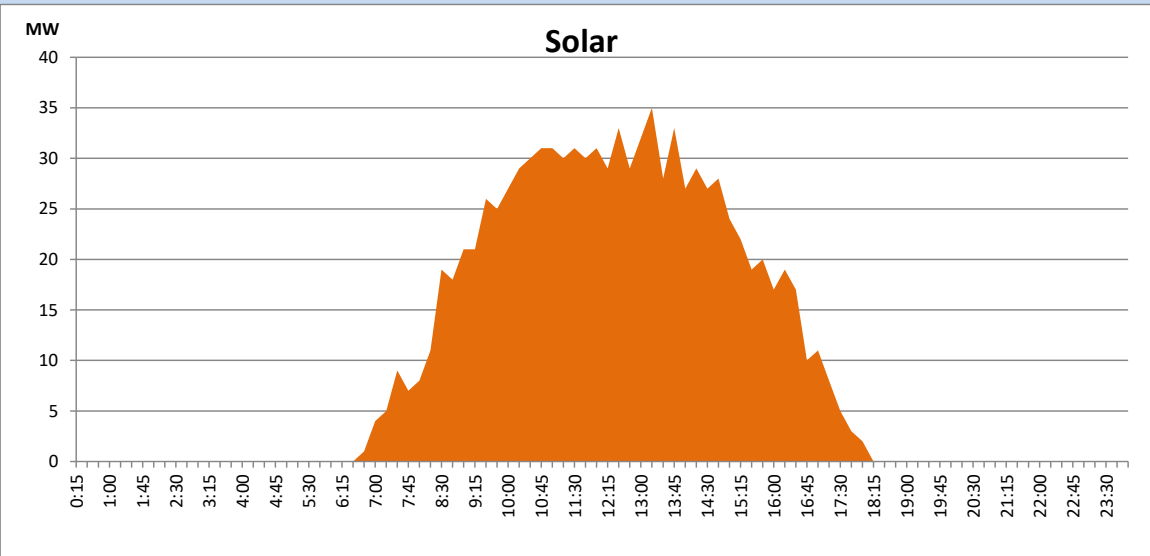
Based on Telemetered Power Stations only



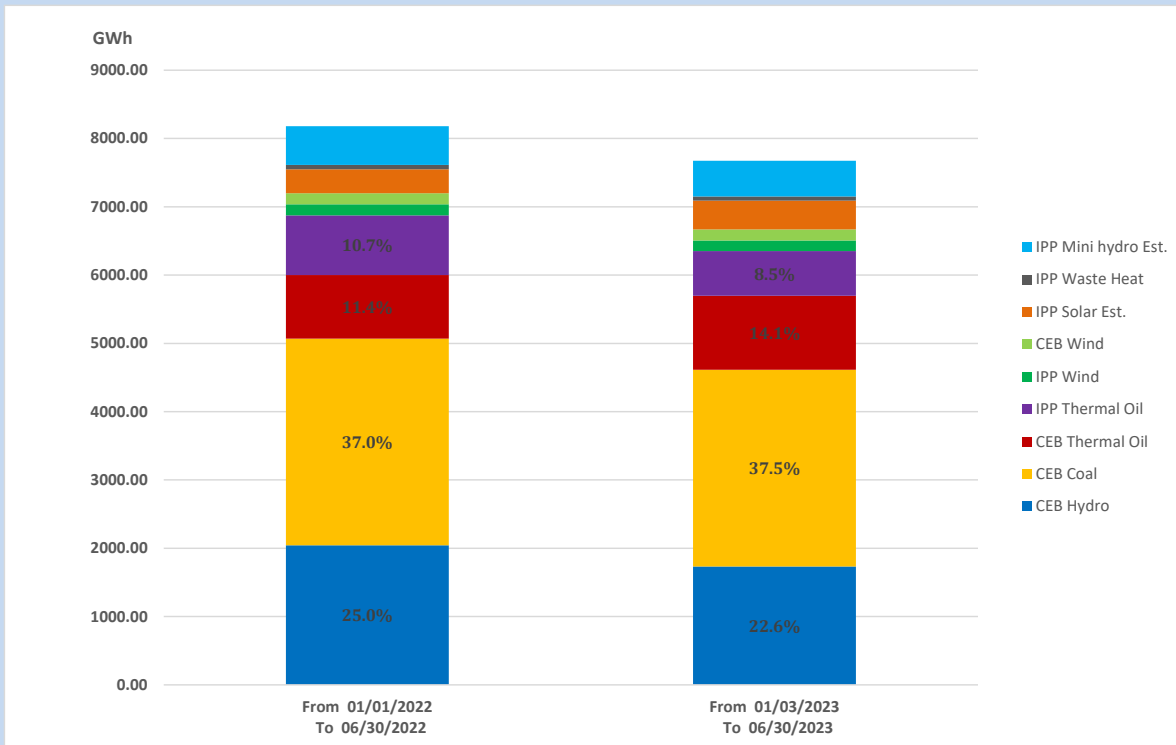
Solar Generation during

June 30, 2023

Based on Telemetered Power Stations only



15. Cumulative Dispatch Comparison with Last Year



The above figures are including contribution from roof top solar, non telemetered solar and mini hydro plants

Cumulative dispatch

From 01/01/2022 To 06/30/2022

8179 GWh

From 01/01/2023 To 06/29/2023

7678 GWh

Thermal Plant Fuel types

Power Station	Primary Fuel
CEB Thermal	
Sapugaskanda 1	Heavy Fuel
Sapugaskanda 2	Heavy Fuel
Kelanitissa Small Gas Turbines	Auto Diesel
GT 7 - Kelanitissa	Auto Diesel
Kelanitissa CCY	Naphtha or Diesel
Lakvijaya 1	Coal
Lakvijaya 2	Coal
Lakvijaya 3	Coal
Uthuru Janani	Heavy Fuel
Barge CEB	Heavy Fuel
KCCPS -2	Auto Diesel

Power Station	Primary Fuel
Private Thermal	
West Coast	Auto Diesel / Heavy Fuel

Major Incidents reported during the day

June 30, 2023

- 1) WPS GSS 33kV B/S CB SH01 tripped at 14:09hrs due to operation of earth fault protection. The 33kV B/S was normalized at 14:22hrs.
- 2) Kilinochchi GSS 33kV feeder 07 tripped and A/R at 16:05 hrs due to the operation of earth fault protection. At the same time , 33kV B/S 01 tripped due to the operation of earth fault protection. The 33kV B/S was normalized at 16:09hrs.
- 3) WPS GSS 33kV feeder 09 tripped and A/R at 17:46 hrs due to the operation of earth fault protection. At the same time , 33kV B/S CB SH02 tripped due to the operation of earth fault protection. The 33kV B/S was normalized at 17:53hrs.
- 4) All Polpitiya m/cs, New Laxapana m/cs, Old Laxapana m/cs made unavailable at 23:37hrs due to facilitate Laxapana pond de-silting outage.