

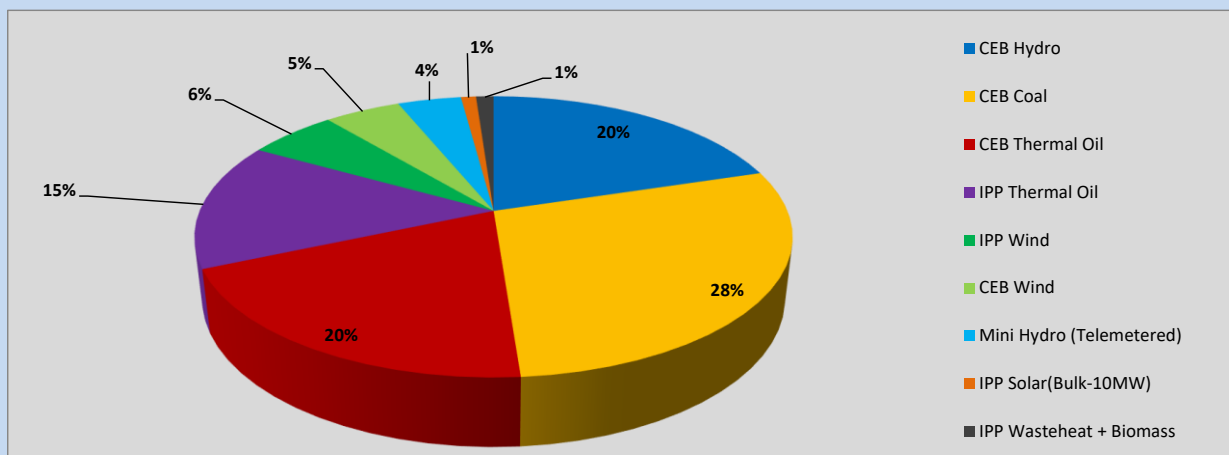
# Generation and Reservoirs Statistics

June 29, 2023



PUBLIC UTILITIES COMMISSION OF SRI LANKA

## 1. Daily Generation Mix in MWh



CEB Hydro	8,030	MWh
CEB Coal	11,299	MWh
CEB Thermal Oil	7,804	MWh
IPP Thermal Oil	5,789	MWh
IPP Wind	2,278	MWh
CEB Wind	1,949	MWh
Mini Hydro (Telemetered)	1,627	MWh
IPP Solar (Bulk)	385	MWh
IPP Wasteheat + Biomass	450	MWh

**Total Generation (Excluding estimated figures) 39,611 MWh**

### Estimated figures of CEB generation report

Estimated unserved energy = 0.00 GWh

Estimated Mini Hydro (Non telemetered) = 2453 MWh

Estimated IPP Solar PV (Bulk 1-10MW) = 304 MWh

Estimated Solar Roof Top PV = 1890 MWh

## 2. Cumulative Dispatch

Following data excludes the contribution from roof top solar, non telemetered solar and mini hydro plants

### For Current Month

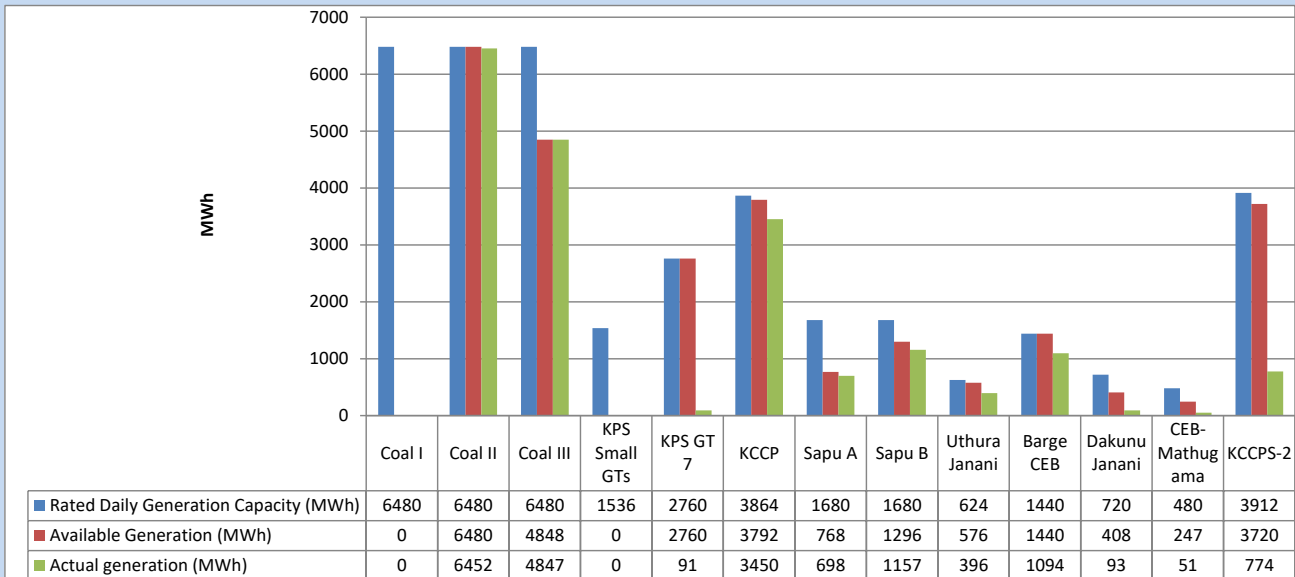
Category	Dispatch (GWh)	
CEB Hydro	249	21.52%
CEB Coal	377	32.60%
CEB Thermal Oil	228	19.72%
IPP Thermal	132	11.42%
SPP Wind	59	5.11%
CEB Wind	51	4.42%
Mini Hydro (Telemetered)	38	3.30%
IPP Solar(Bulk-10MW)	10	0.83%
IPP Wasteheat + BMP	13	1.09%
<b>Total</b>	<b>1,156</b>	

### For Current Year

Category	Dispatch (GWh)	
CEB Hydro	1,729	25.01%
CEB Coal	2,872	41.53%
CEB Thermal Oil	1,075	15.55%
IPP Thermal	649	9.39%
SPP Wind	150	2.16%
CEB Wind	162	2.35%
Mini Hydro (Telemetered)	164	2.37%
IPP Solar(Bulk-10MW)	53	0.76%
IPP Wasteheat	60	0.86%
<b>Total</b>	<b>6,914</b>	

### 3. CEB owned Thermal Plant Dispatch

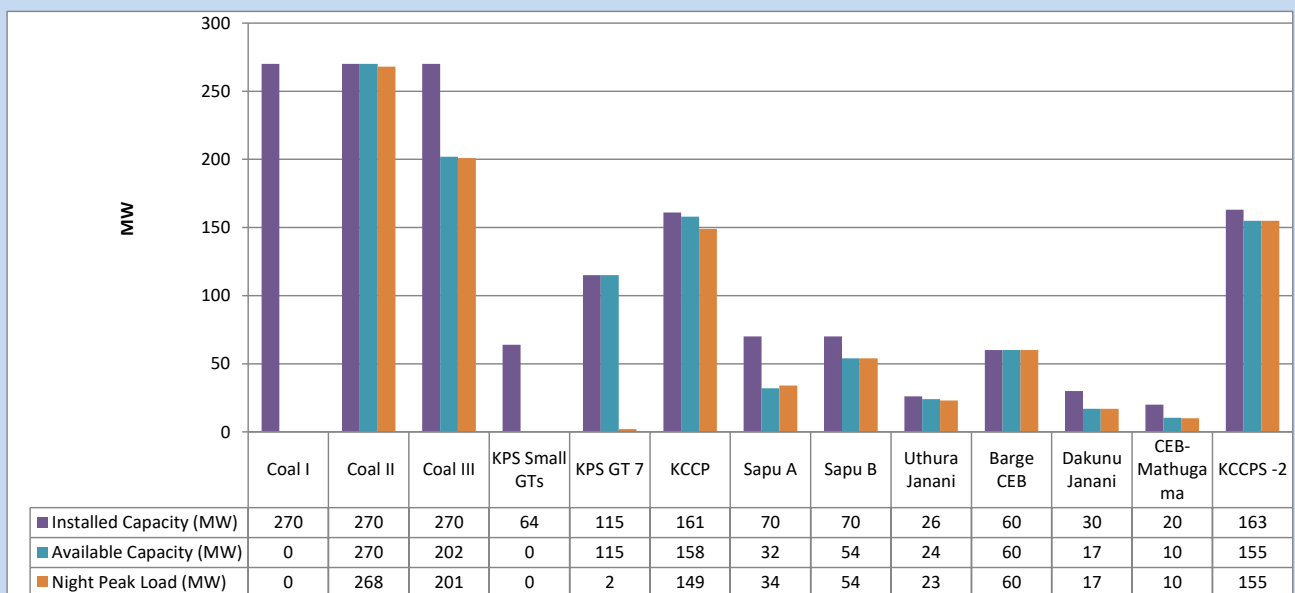
June 29, 2023



Available Generation is estimated based on plant availability at 6.00am on

June 30, 2023

### 4. CEB owned Thermal Plant Loading at the Night Peak

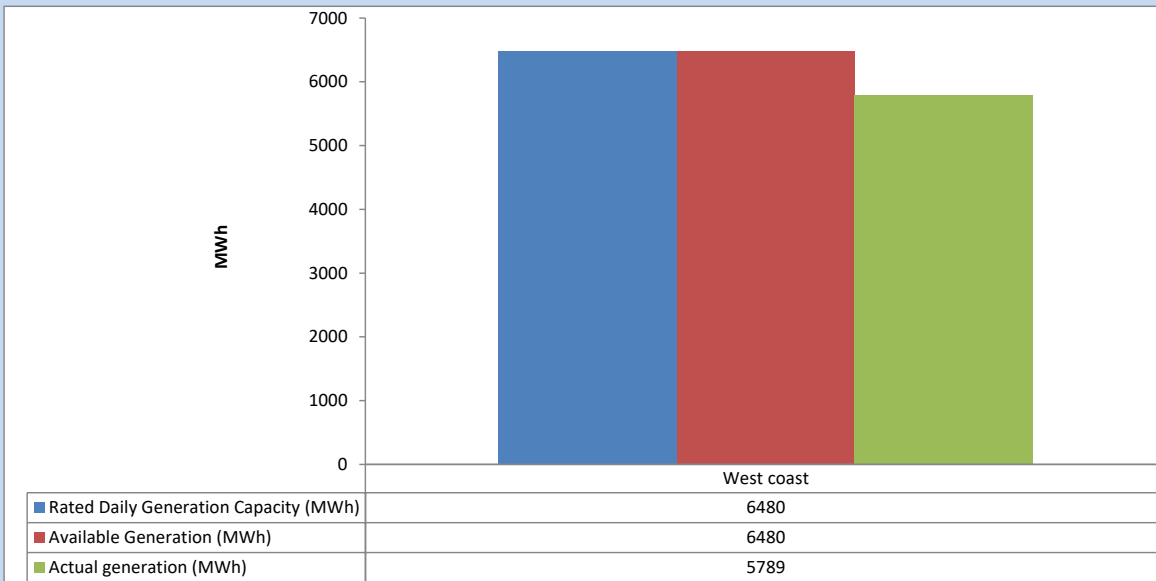


Plant availability is recorded at 6.00 am on

June 30, 2023

## 5. IPP owned Thermal Plant Dispatch

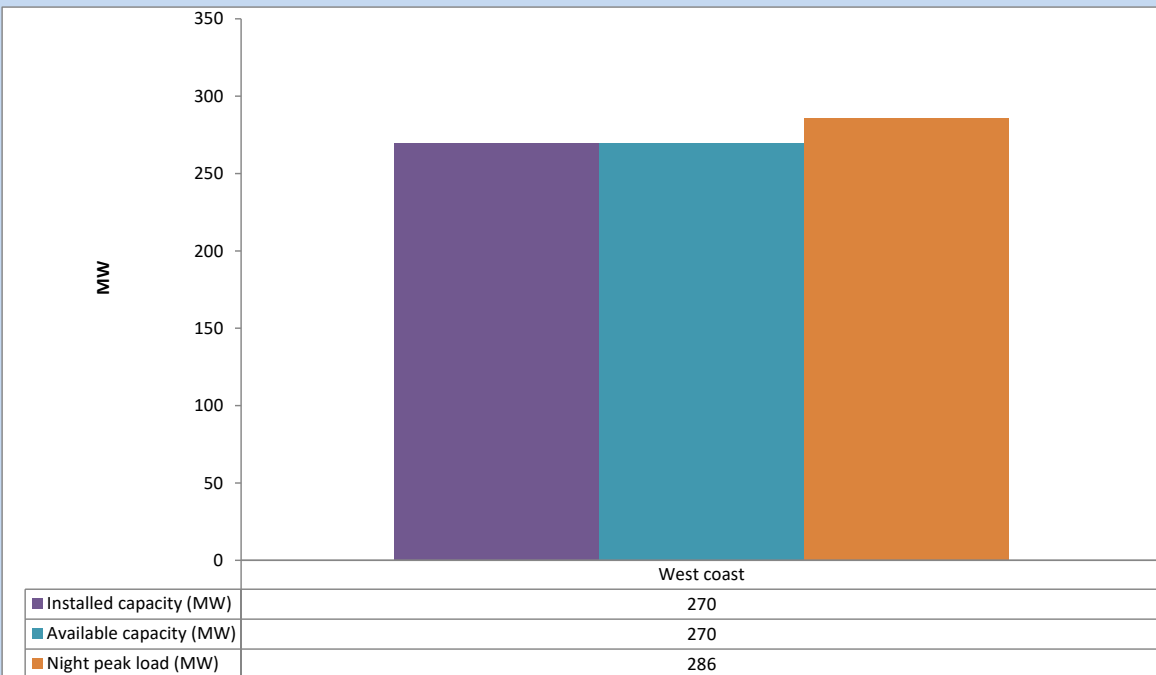
June 29, 2023



Available Generation is estimated based on plant availability at 6.00am on

June 30, 2023

## 6. IPP owned Thermal Plant Loading at the Night Peak

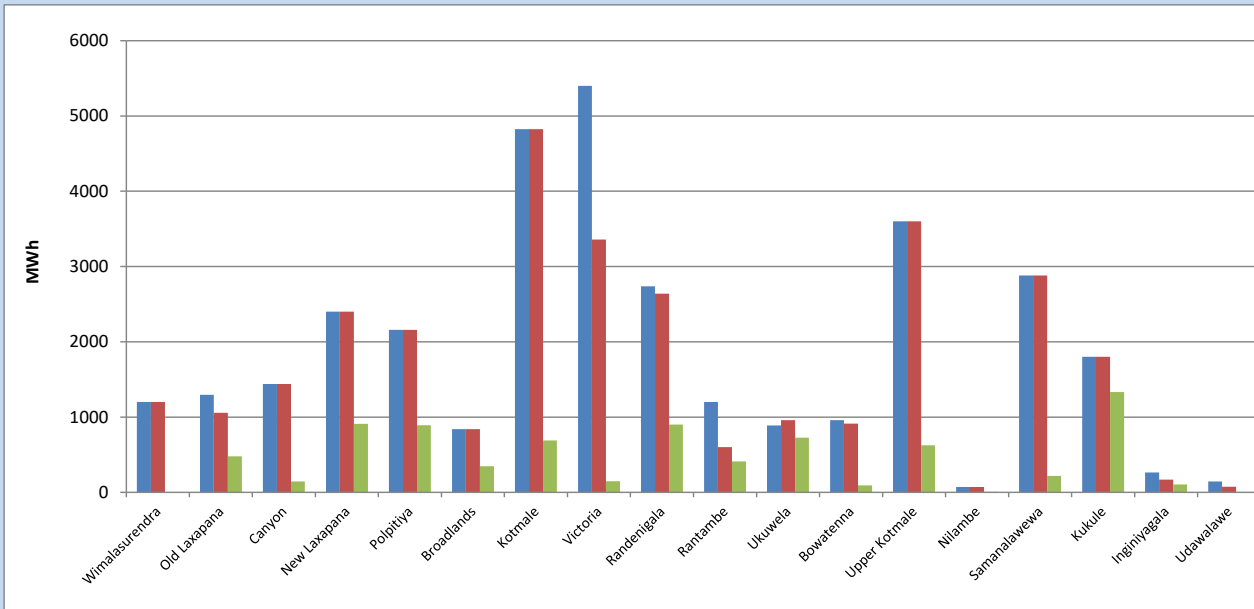


Plant availability is recorded at 6.00 am on

June 30, 2023

## 7. Major Hydro Plant Dispatch

June 29, 2023

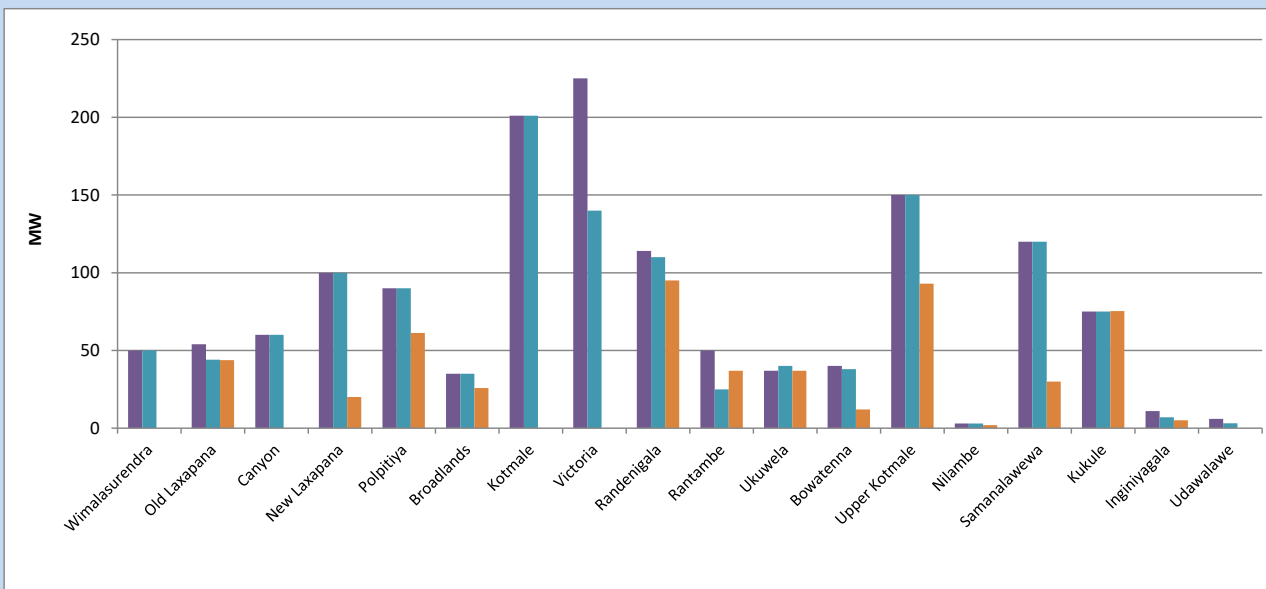


Available Generation is estimated based on plant availability at 6.00am on  
Broadlands power plant is operating in the Commissioning Stage

June 30, 2023

## 8. Major Hydro Plant Loading at Night Peak

June 29, 2023



Plant availability is recorded at 6.00 am on  
Broadlands power plant is operating in the Commissioning Stage

June 30, 2023

## 9. Summary of Major Plant performance

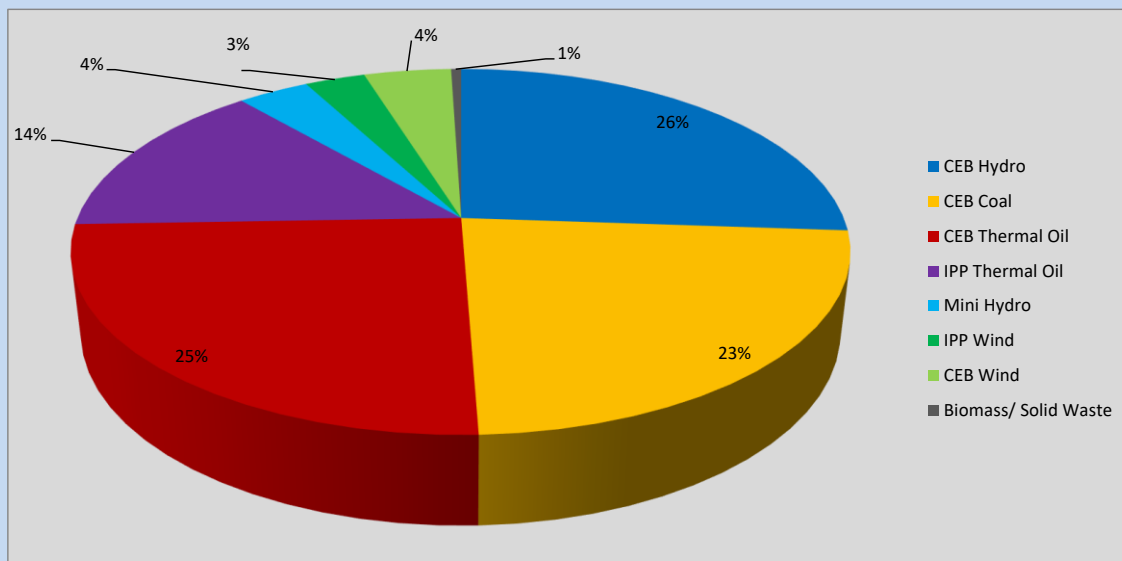
Plant	Installed Capacity	Plant Availability	Night peak Load	Plant Dispatch
	(MW)	(MW)	(MW)	(MWh)
Wimalasurendra	50	50	0	0
Old Laxapana	54	44	44	479
Canyon	60	60	0	144
New Laxapana	100	100	20	910
Polpitiya	90	90	61	890
Broadlands	35	35	26	347
Kotmale	201	201	0	690
Victoria	225	140	0	149
Randenigala	114	110	95	900
Rantambe	50	25	37	410
Ukuwela	37	40	37	727
Bowatenna	40	38	12	94
Upper Kotmale	150	150	93	626
Nilambe	3	3	2	7
Samanalawewa	120	120	30	219
Kukule	75	75	75	1,333
Inginiyagala	11	7	5	105
Udawalawe	6	3	0	0
Puttalam Coal I	270	0	0	0
Puttalam Coal II	270	270	268	6,452
Puttalam Coal III	270	202	201	4,847
KPS Small GTs	64	0	0	0
KPS GT 7	115	115	2	91
KCCP	161	158	149	3,450
Sapugaskanda A	70	32	34	698
Sapugaskanda B	70	54	54	1,157
Uthura Janani	26	24	23	396
Barge CEB	60	60	60	1,094
CEB-Hambantota	30	17	17	93
CEB-Mathugama	20	10	10	51
ACE Matara	24	0	0	0
Asia Power	50	0	0	0
KCCPS -2	163	155	155	774
West Coast	270	270	286	5,789
Nothern Power	36	0	0	0
ACE Embilipitiya	93	0	0	0
<b>Total</b>	<b>3,483</b>	<b>2,658</b>	<b>2,025</b>	<b>39,611</b>

Plant availability is the availability recorded at 6 am on

June 30, 2023

### 10. Contribution to the Night Peak in MW

June 29, 2023



CEB Hydro	525 MW
CEB Coal	469 MW
CEB Thermal Oil	504 MW
IPP Thermal Oil	286 MW
Mini Hydro (Telemetered)	71 MW
IPP Wind	60 MW
CEB Wind	86.9 MW
Biomass/ Solid Waste	10 MW

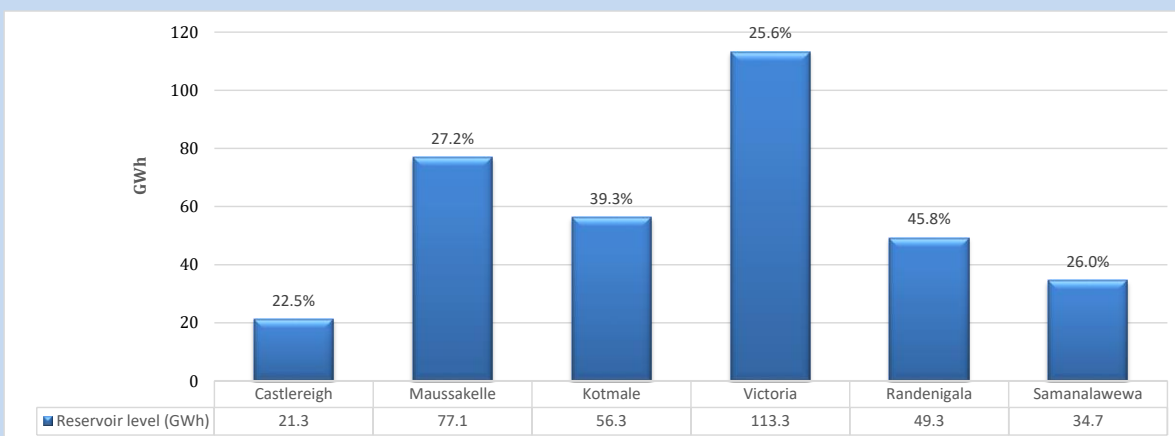
#### Recorded Peak Demand Data

Night Peak*	2,013 MW
Day Peak Maximum Demand	1,823 MW
Day Peak Minimum Demand	1,607 MW
Off Peak Minimum Demand	1,244 MW

Above figures are excluding contribution from roof top solar, non telemetered solar and mini hydro plants

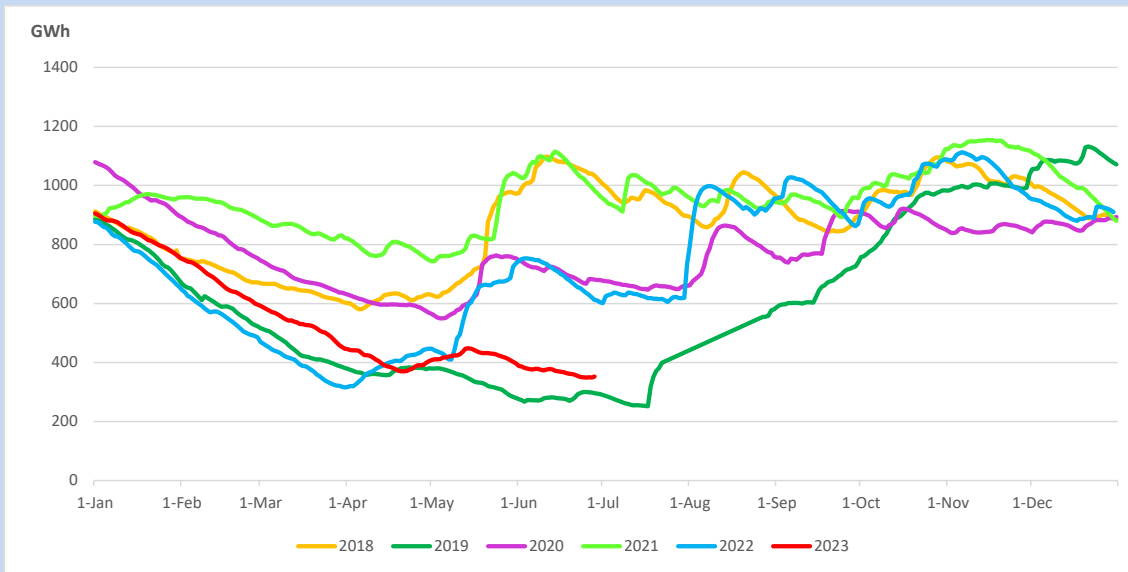
#### Reservoir Levels -

as at 06.00 Hr on June 30, 2023

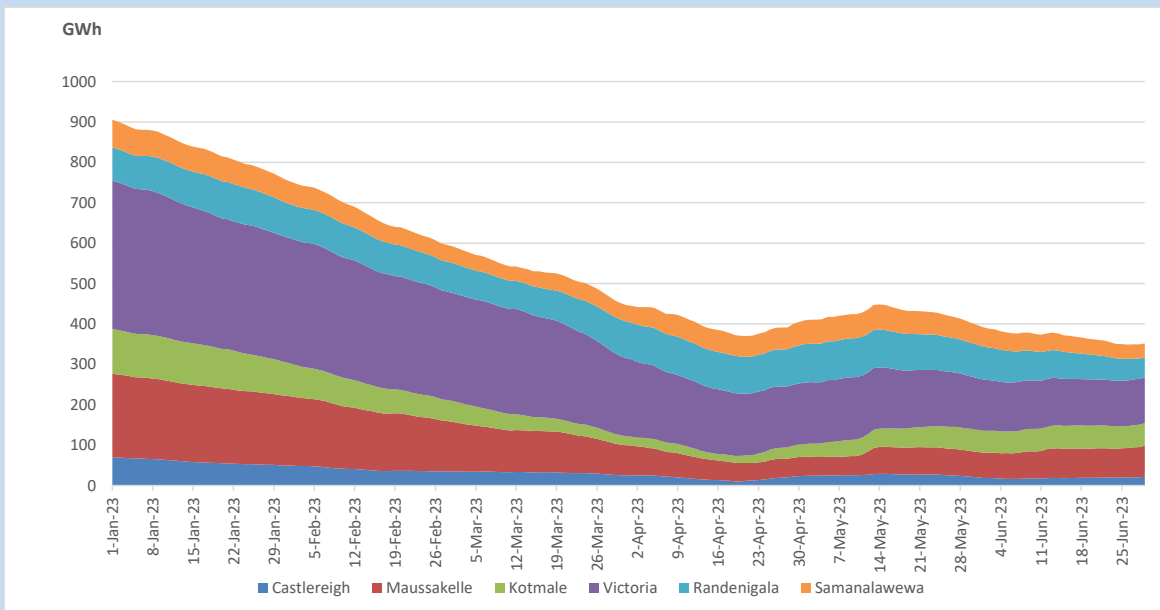


Total Reservoir Level	352 GWh
% of Total capacity	29.2%

## 11. Comparison of Total Reservoir Storage Levels with Past Years

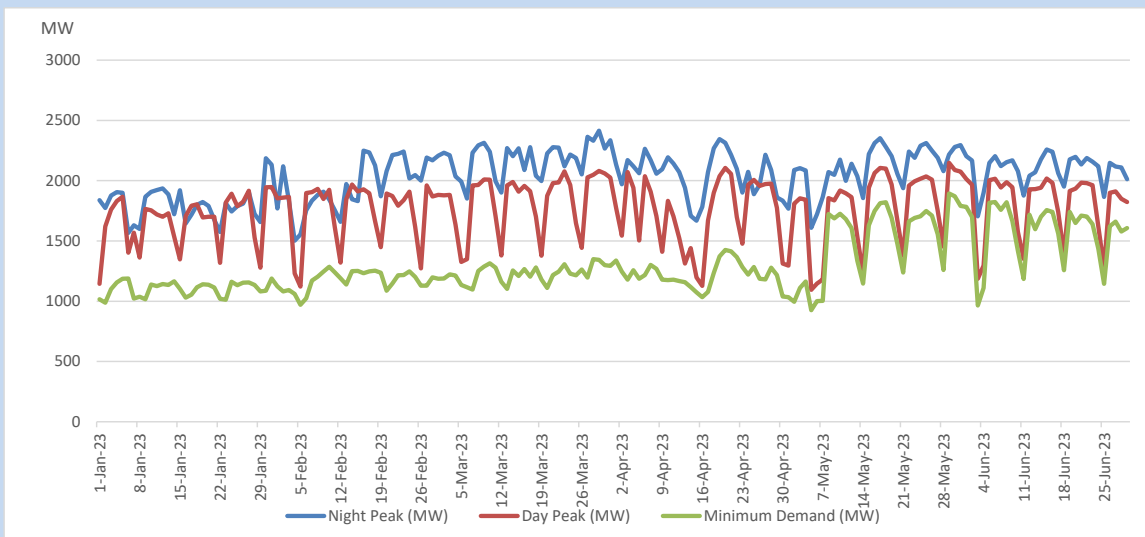


## 12. Variation of Major Hydro Reservoir Levels in the current year (GWh)





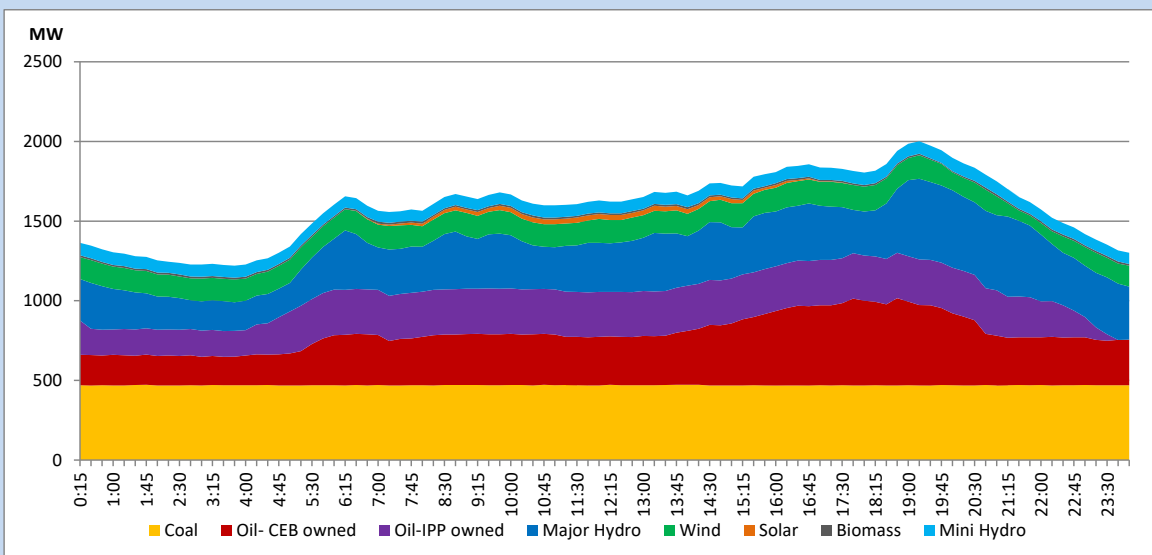
### 13. Variation of Demand during the current year



The above figures are excluding contribution from roof top solar, non telemetered solar and mini hydro plants

### 14. Daily Load Curve

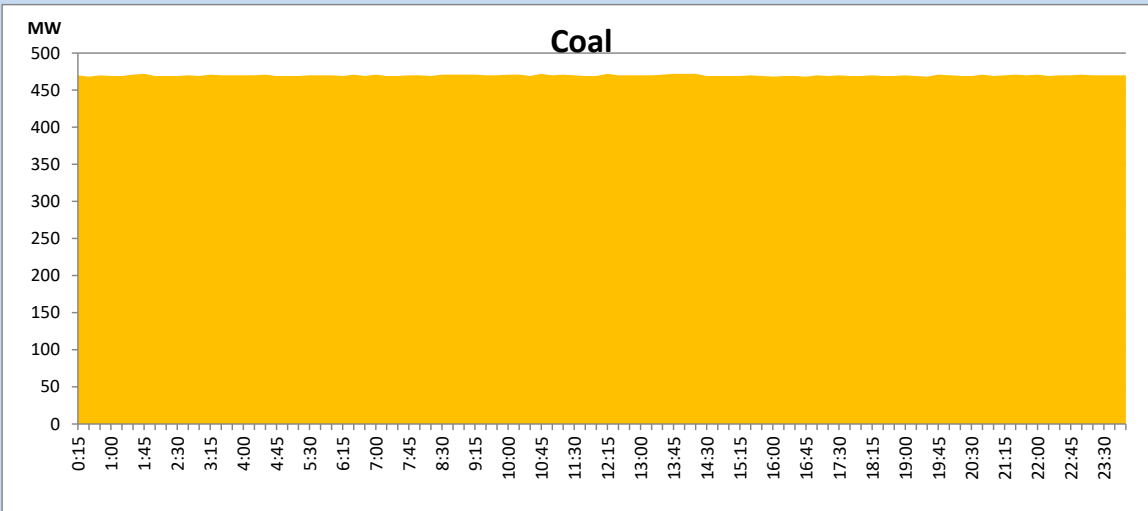
June 29, 2023



Solar and wind data is based on Telemetered Power Stations only

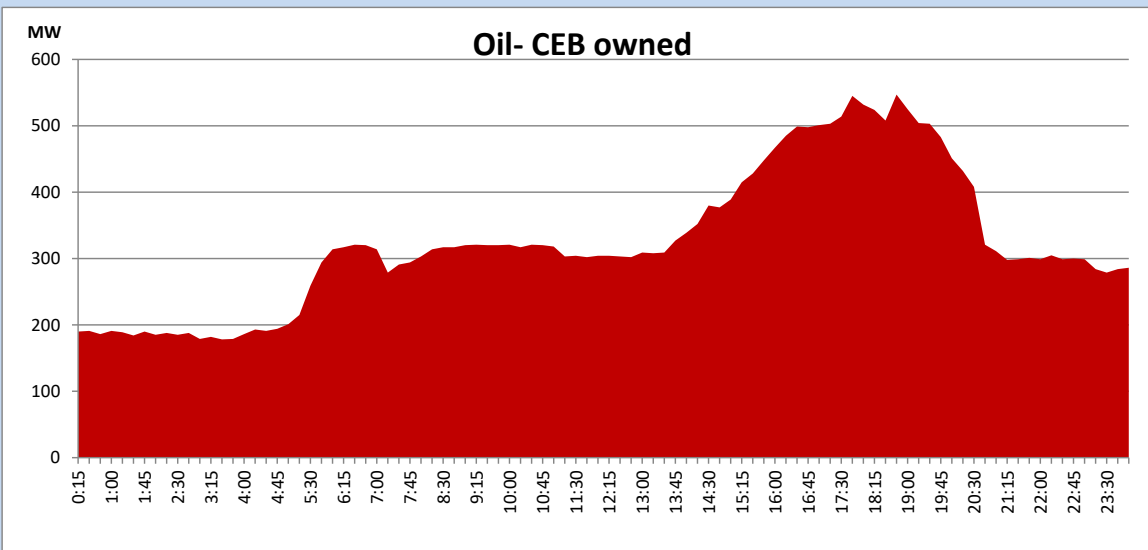
## Coal Generation during

June 29, 2023



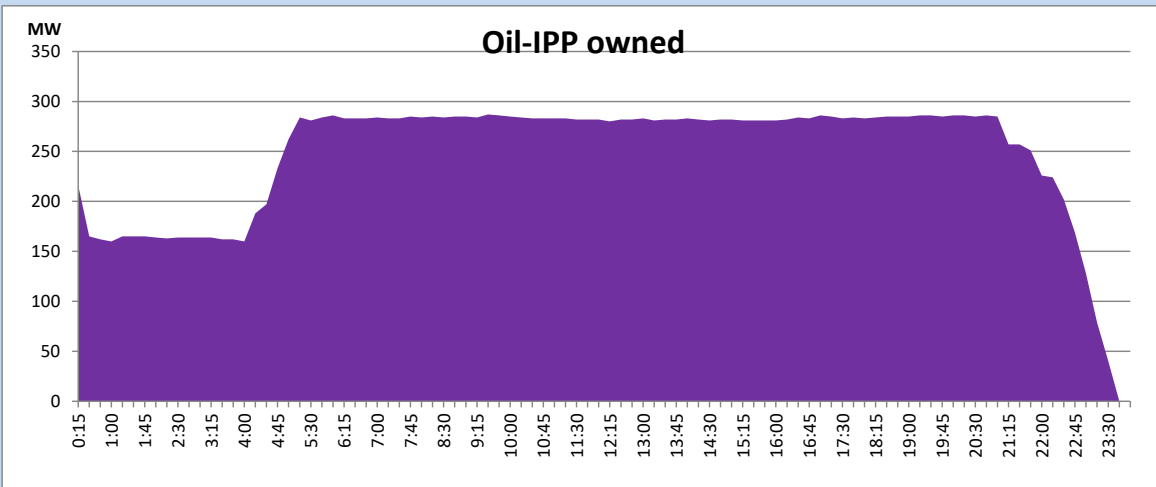
## CEB Oil Plant Generation during

June 29, 2023



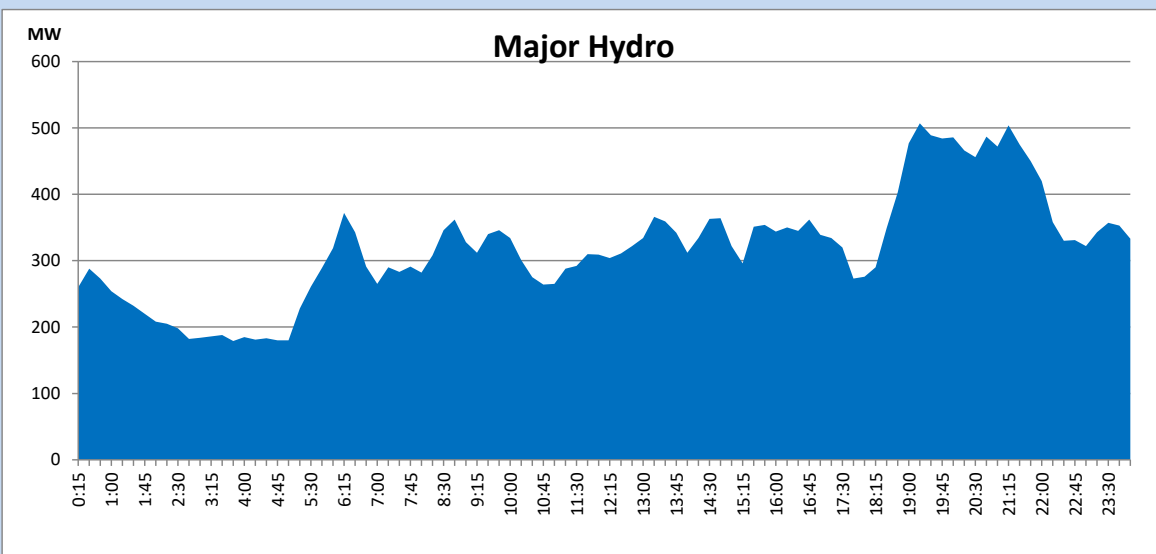
IPP Oil Plant Generation during

June 29, 2023



Major Hydro Generation during

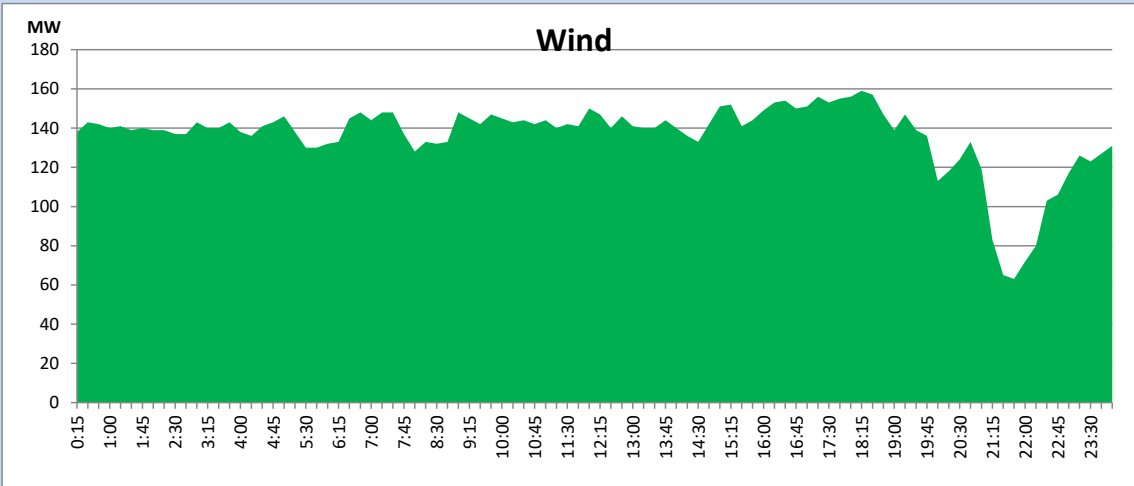
June 29, 2023



## Wind Generation during

June 29, 2023

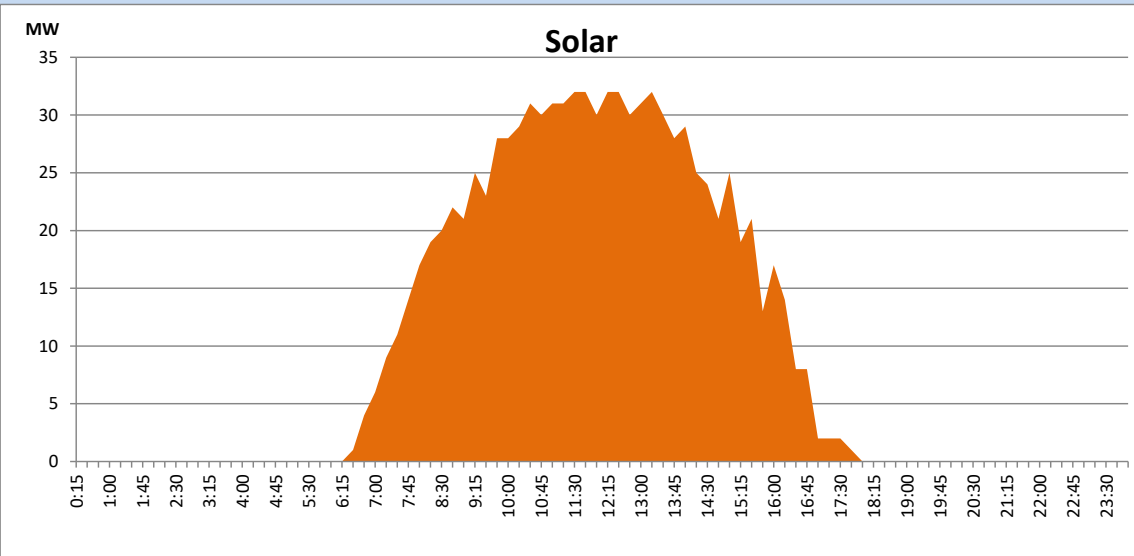
Based on Telemetered Power Stations only



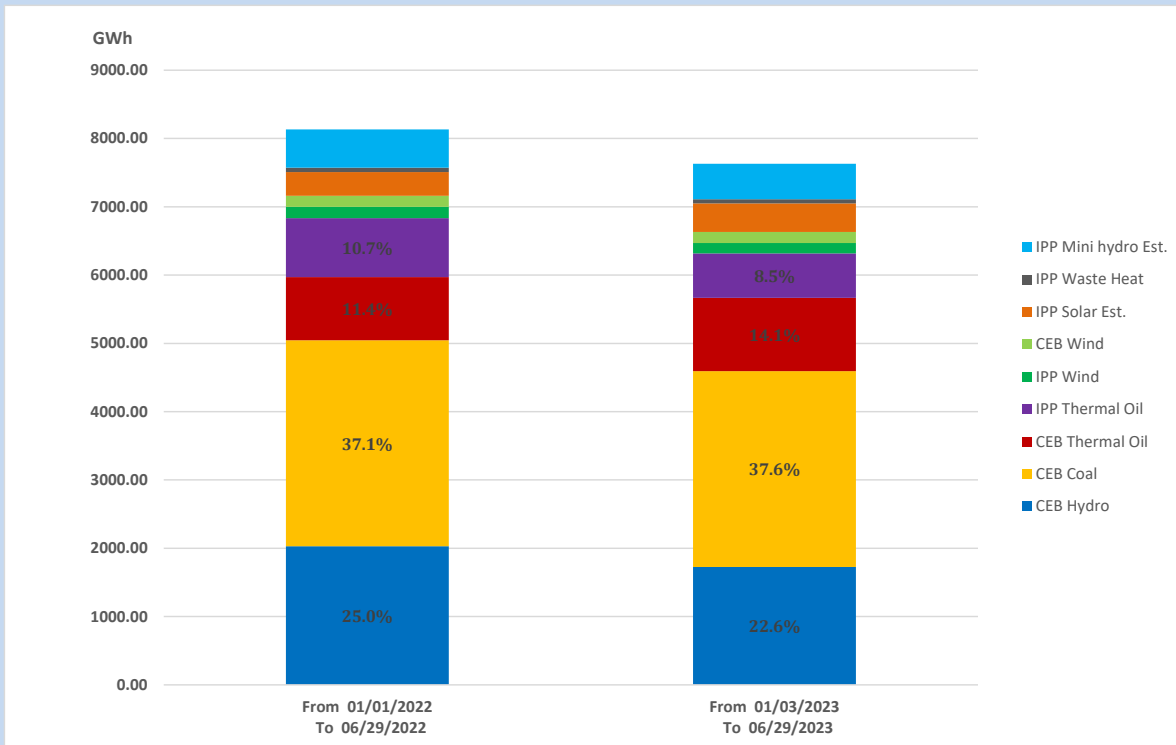
## Solar Generation during

June 29, 2023

Based on Telemetered Power Stations only



## 15. Cumulative Dispatch Comparison with Last Year



The above figures are including contribution from roof top solar, non telemetered solar and mini hydro plants

### Cumulative dispatch

From 01/01/2022 To 06/29/2022

8132 GWh

From 01/01/2023 To 06/29/2023

7635 GWh

**Thermal Plant Fuel types**

Power Station	Primary Fuel
CEB Thermal	
Sapugaskanda 1	Heavy Fuel
Sapugaskanda 2	Heavy Fuel
Kelanitissa Small Gas Turbines	Auto Diesel
GT 7 - Kelanitissa	Auto Diesel
Kelanitissa CCY	Naphtha or Diesel
Lakvijaya 1	Coal
Lakvijaya 2	Coal
Lakvijaya 3	Coal
Uthuru Janani	Heavy Fuel
Barge CEB	Heavy Fuel
KCCPS -2	Auto Diesel

Power Station	Primary Fuel
Private Thermal	
West Coast	Auto Diesel / Heavy Fuel

**Major Incidents reported during the day**

June 29, 2023

- 1) Hambanthota 220/132/33kV T/F 02 tripped from all ends at 7:40hrs due to operation of differential protection.  
The Hambanthota 220/132/33kV T/F 02 energized at 8:09hrs
- 2) Galle – Matara 132kV cct 02 tripped and A/R from both ends at 06:04hrs(30.06.23) due to the operation of differential protection.