

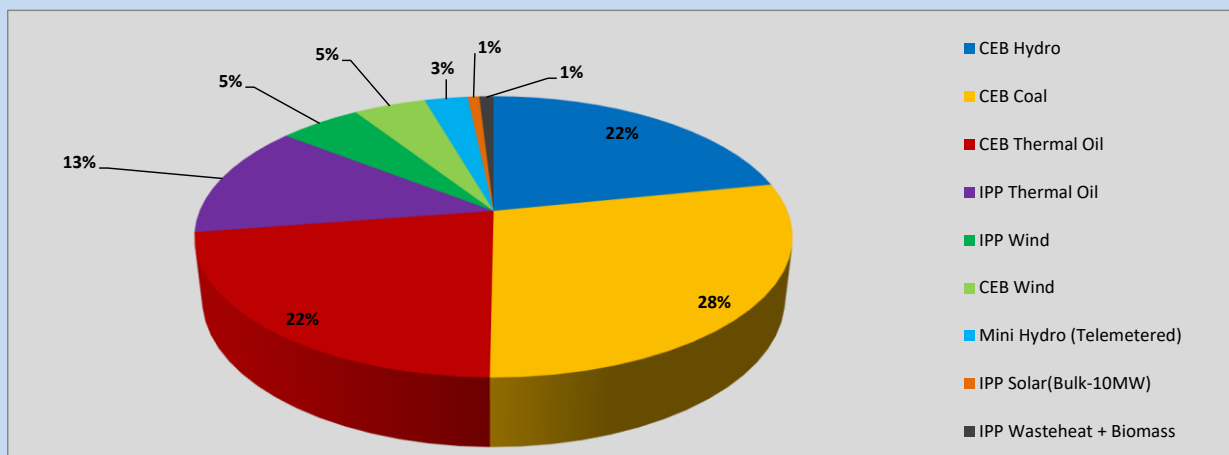
Generation and Reservoirs Statistics

June 28, 2023



PUBLIC UTILITIES COMMISSION OF SRI LANKA

1. Daily Generation Mix in MWh



CEB Hydro	8,654	MWh
CEB Coal	11,278	MWh
CEB Thermal Oil	8,901	MWh
IPP Thermal Oil	5,162	MWh
IPP Wind	2,106	MWh
CEB Wind	1,856	MWh
Mini Hydro (Telemetered)	1,110	MWh
IPP Solar (Bulk)	299	MWh
IPP Wasteheat + Biomass	367	MWh

Total Generation (Excluding estimated figures) 39,733 MWh

Estimated figures of CEB generation report

Estimated unserved energy = 0.00 GWh

Estimated Mini Hydro (Non telemetered) = 2970 MWh

Estimated IPP Solar PV (Bulk 1-10MW) = 304 MWh

Estimated Solar Roof Top PV = 1890 MWh

2. Cumulative Dispatch

Following data excludes the contribution from roof top solar, non telemetered solar and mini hydro plants

For Current Month

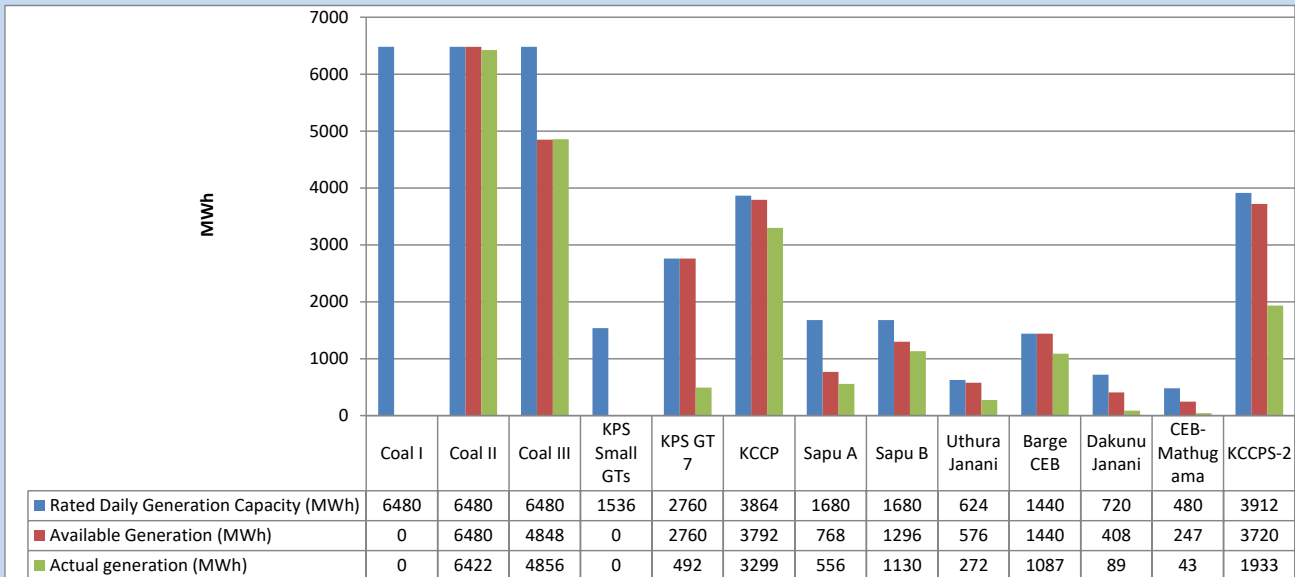
Category	Dispatch (GWh)	
CEB Hydro	241	21.57%
CEB Coal	366	32.74%
CEB Thermal Oil	220	19.72%
IPP Thermal	126	11.30%
SPP Wind	57	5.09%
CEB Wind	49	4.40%
Mini Hydro (Telemetered)	36	3.27%
IPP Solar(Bulk-10MW)	9	0.82%
IPP Wasteheat + BMP	12	1.08%
Total	1,116	

For Current Year

Category	Dispatch (GWh)	
CEB Hydro	1,721	25.04%
CEB Coal	2,860	41.61%
CEB Thermal Oil	1,068	15.53%
IPP Thermal	643	9.36%
SPP Wind	147	2.14%
CEB Wind	160	2.33%
Mini Hydro (Telemetered)	162	2.36%
IPP Solar(Bulk-10MW)	52	0.76%
IPP Wasteheat	59	0.86%
Total	6,874	

3. CEB owned Thermal Plant Dispatch

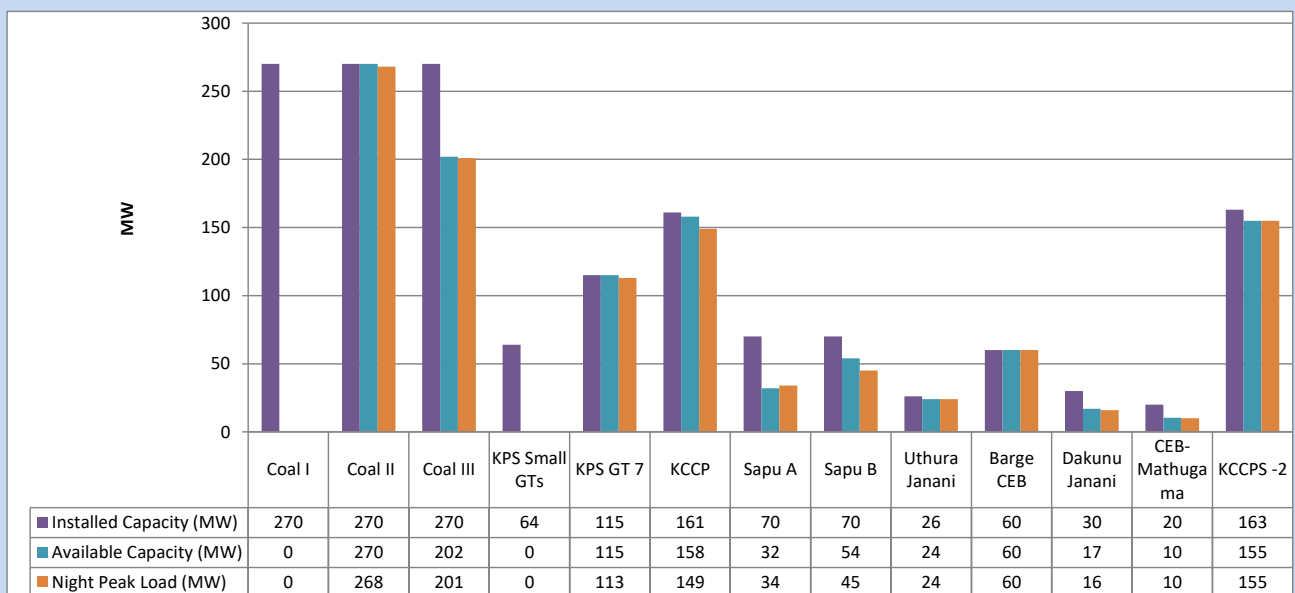
June 28, 2023



Available Generation is estimated based on plant availability at 6.00am on

June 29, 2023

4. CEB owned Thermal Plant Loading at the Night Peak

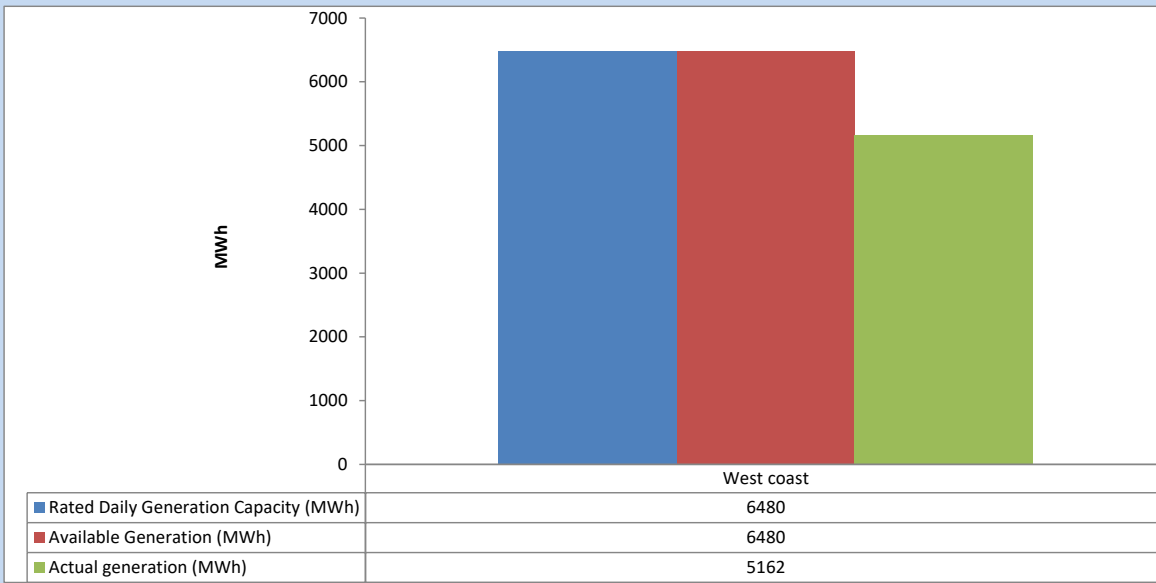


Plant availability is recorded at 6.00 am on

June 29, 2023

5. IPP owned Thermal Plant Dispatch

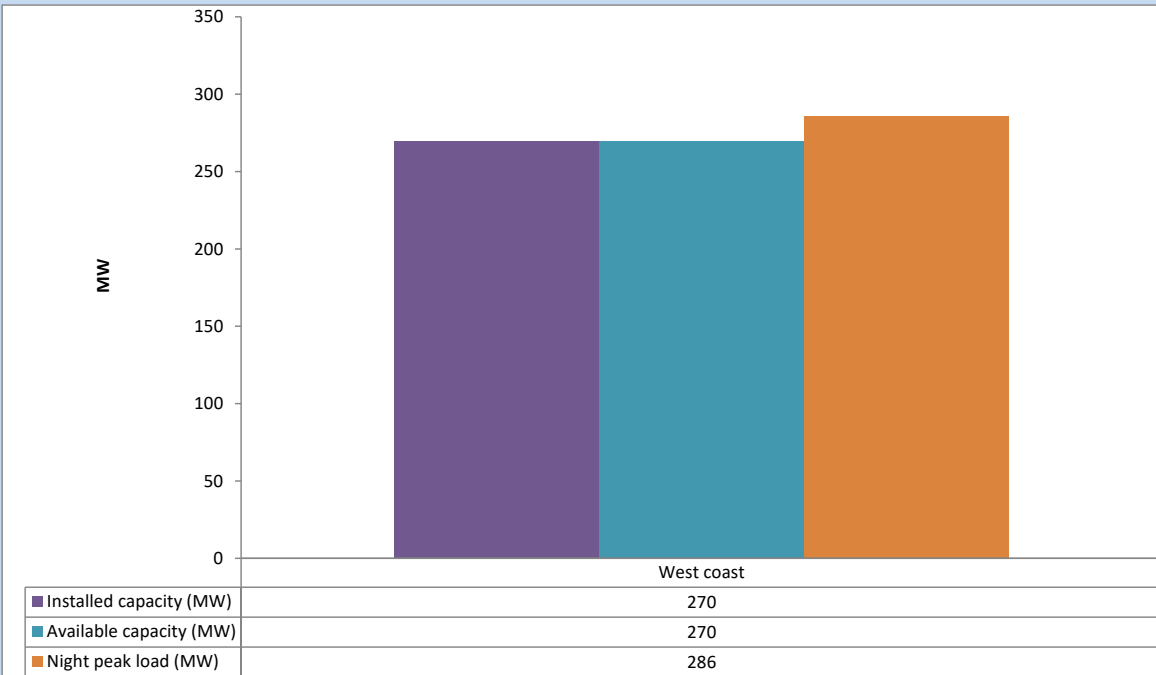
June 28, 2023



Available Generation is estimated based on plant availability at 6.00am on

June 29, 2023

6. IPP owned Thermal Plant Loading at the Night Peak

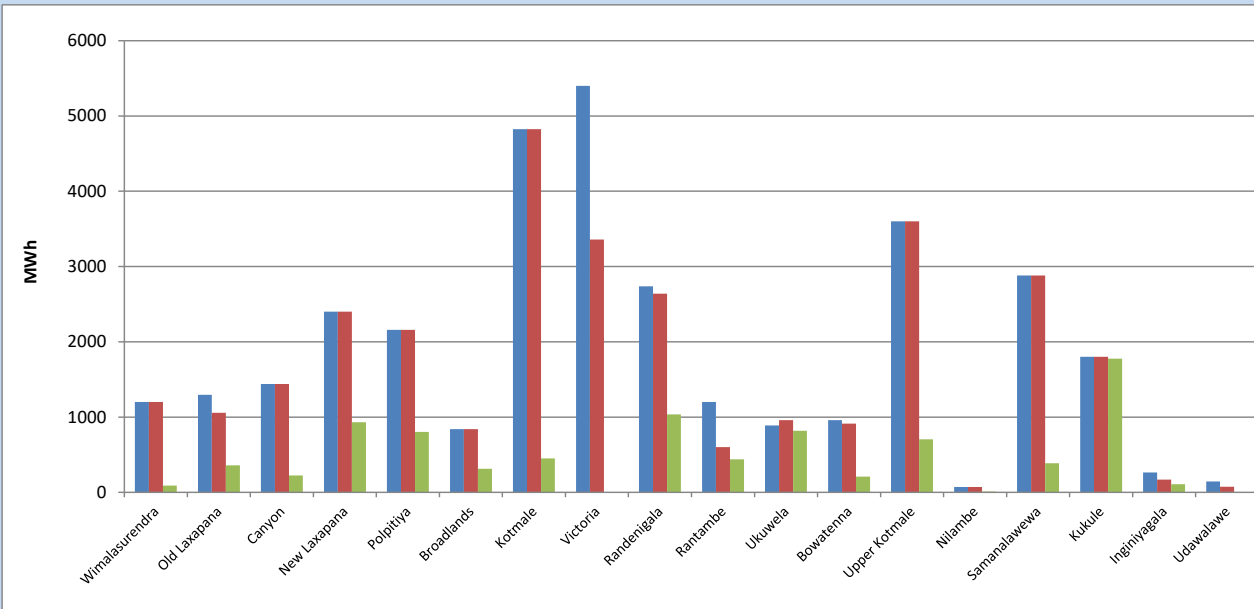


Plant availability is recorded at 6.00 am on

June 29, 2023

7. Major Hydro Plant Dispatch

June 28, 2023

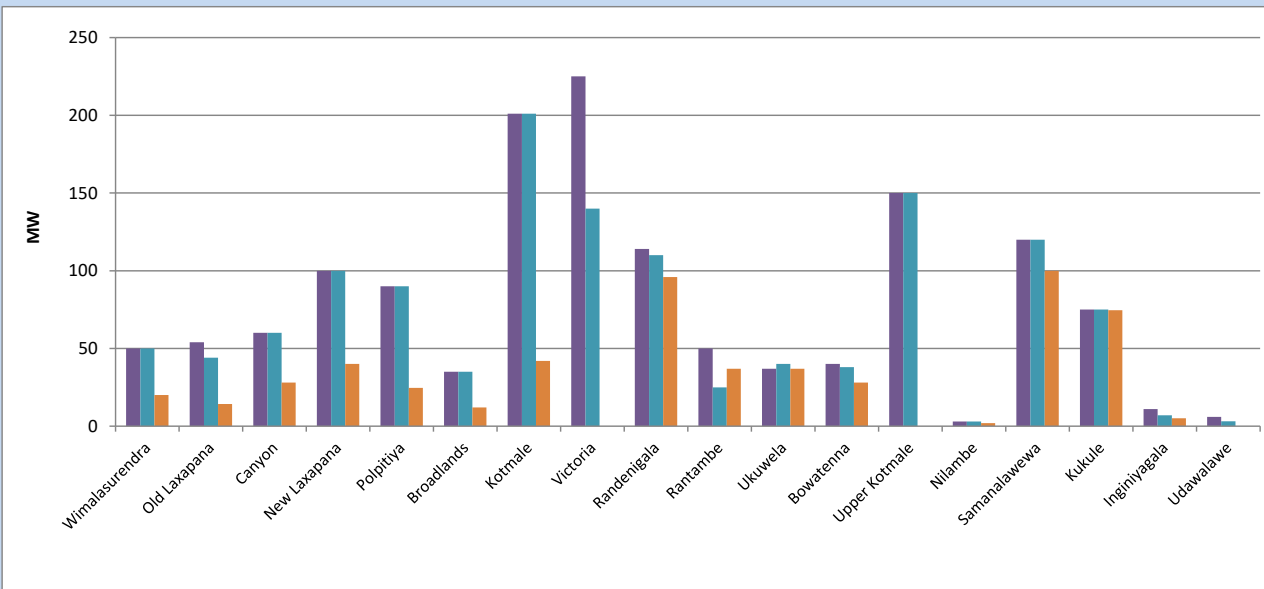


Available Generation is estimated based on plant availability at 6.00am on
Broadlands power plant is operating in the Commissioning Stage

June 29, 2023

8. Major Hydro Plant Loading at Night Peak

June 28, 2023



Plant availability is recorded at 6.00 am on
Broadlands power plant is operating in the Commissioning Stage

June 29, 2023

9. Summary of Major Plant performance

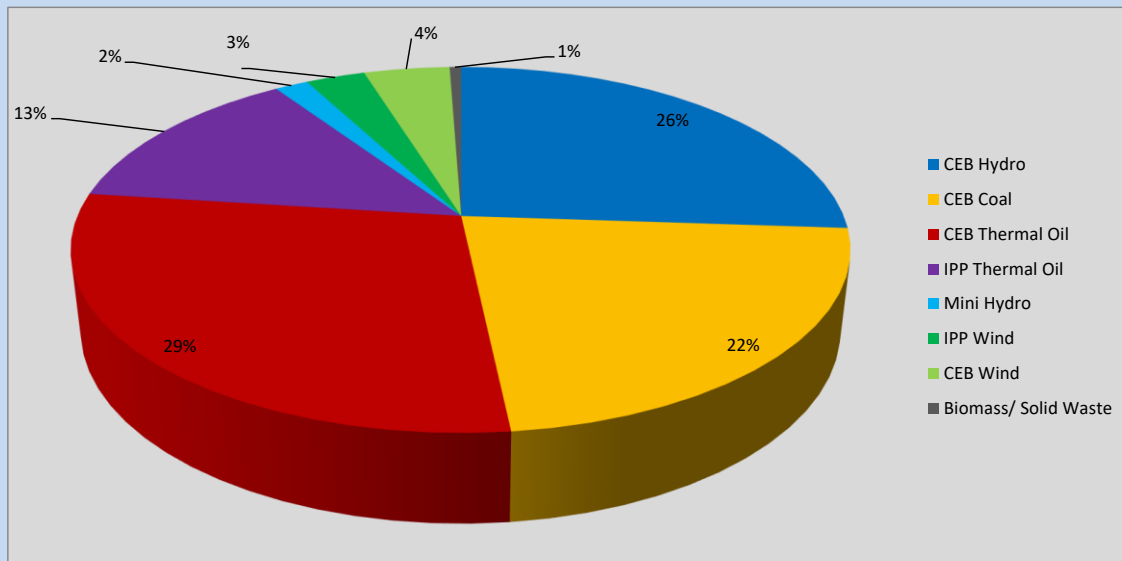
Plant	Installed Capacity	Plant Availability	Night peak Load	Plant Dispatch
	(MW)	(MW)	(MW)	(MWh)
Wimalasurendra	50	50	20	91
Old Laxapana	54	44	14	359
Canyon	60	60	28	223
New Laxapana	100	100	40	930
Polpitiya	90	90	25	802
Broadlands	35	35	12	312
Kotmale	201	201	42	450
Victoria	225	140	0	0
Randenigala	114	110	96	1,035
Rantambe	50	25	37	439
Ukuwela	37	40	37	818
Bowatenna	40	38	28	210
Upper Kotmale	150	150	0	706
Nilambe	3	3	2	10
Samanalawewa	120	120	100	385
Kukule	75	75	75	1,775
Inginiyagala	11	7	5	109
Udawalawe	6	3	0	0
Puttalam Coal I	270	0	0	0
Puttalam Coal II	270	270	268	6,422
Puttalam Coal III	270	202	201	4,856
KPS Small GTs	64	0	0	0
KPS GT 7	115	115	113	492
KCCP	161	158	149	3,299
Sapugaskanda A	70	32	34	556
Sapugaskanda B	70	54	45	1,130
Uthura Janani	26	24	24	272
Barge CEB	60	60	60	1,087
CEB-Hambantota	30	17	16	89
CEB-Mathugama	20	10	10	43
ACE Matara	24	0	0	0
Asia Power	50	0	0	0
KCCPS -2	163	155	155	1,933
West Coast	270	270	286	5,162
Nothern Power	36	0	0	0
ACE Embilipitiya	93	0	0	0
Total	3,483	2,658	2,120	39,733

Plant availability is the availability recorded at 6 am on

June 29, 2023

10. Contribution to the Night Peak in MW

June 28, 2023



CEB Hydro	550 MW
CEB Coal	469 MW
CEB Thermal Oil	606 MW
IPP Thermal Oil	286 MW
Mini Hydro (Telemetered)	35 MW
IPP Wind	62 MW
CEB Wind	89.6 MW
Biomass/ Solid Waste	12 MW

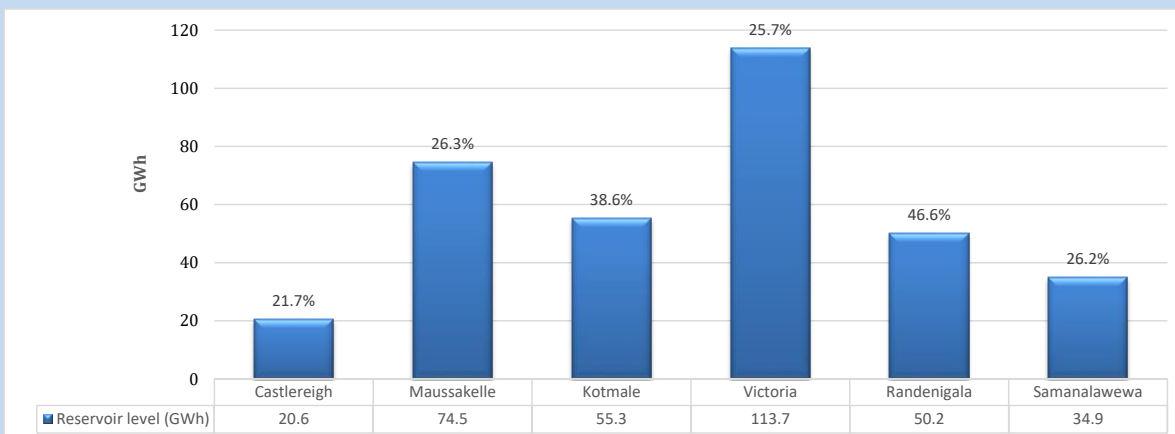
Recorded Peak Demand Data

Night Peak*	2,109 MW
Day Peak Maximum Demand	1,850 MW
Day Peak Minimum Demand	1,578 MW
Off Peak Minimum Demand	1,183 MW

Above figures are excluding contribution from roof top solar, non telemetered solar and mini hydro plants

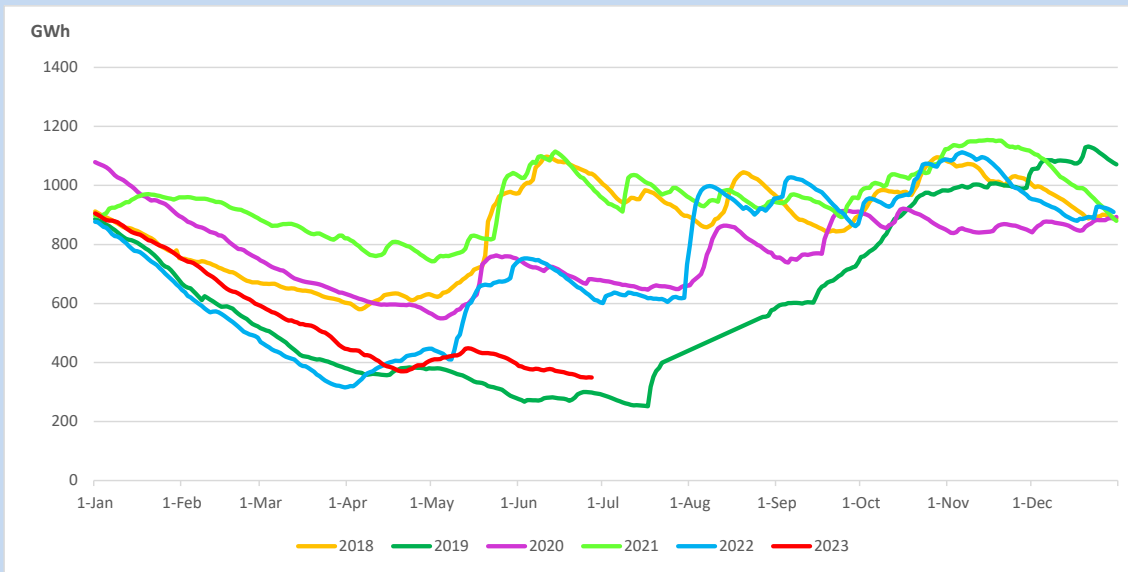
Reservoir Levels -

as at 06.00 Hr on June 29, 2023

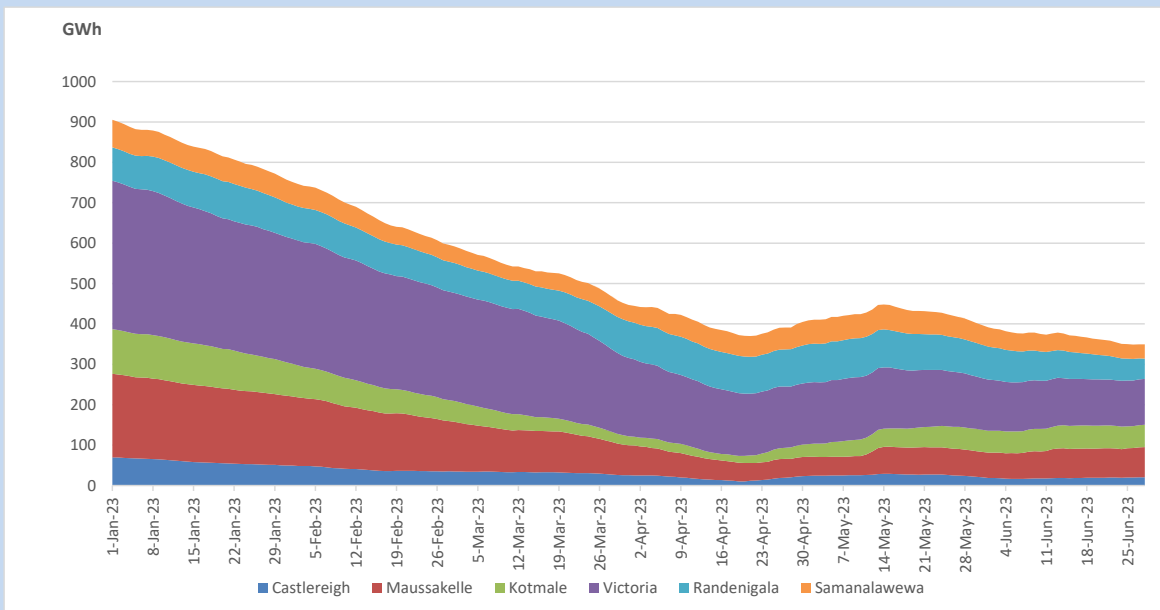


Total Reservoir Level	349.2 GWh
% of Total capacity	29.0%

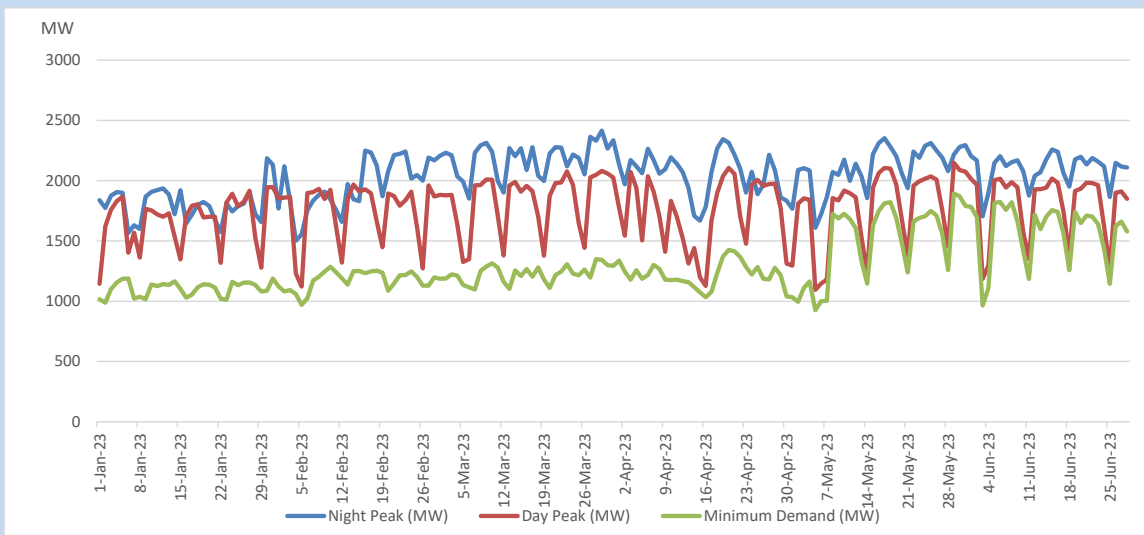
11. Comparison of Total Reservoir Storage Levels with Past Years



12. Variation of Major Hydro Reservoir Levels in the current year (GWh)



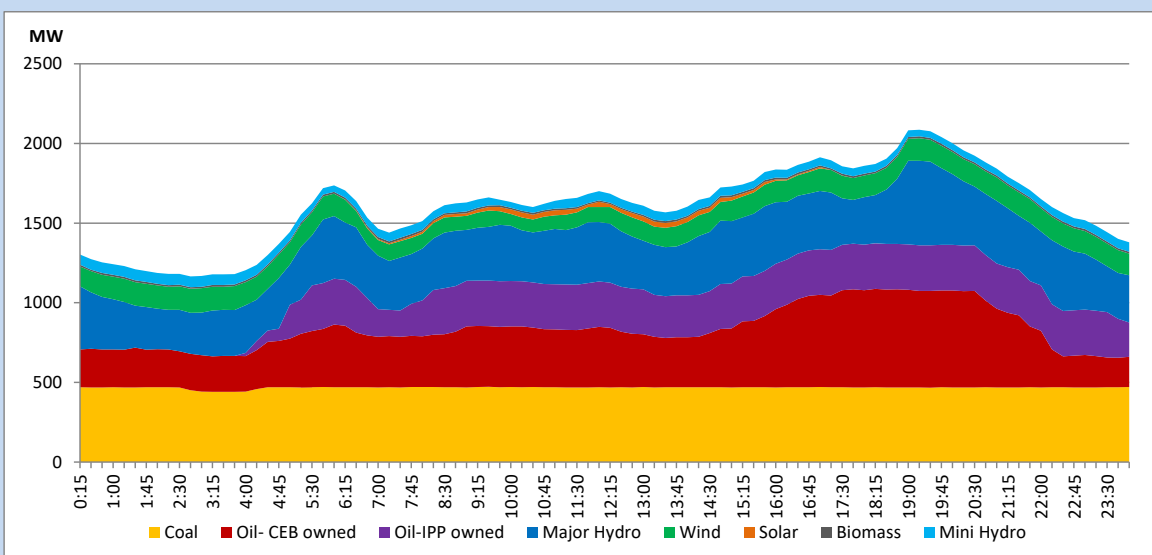
13. Variation of Demand during the current year



The above figures are excluding contribution from roof top solar, non telemetered solar and mini hydro plants

14. Daily Load Curve

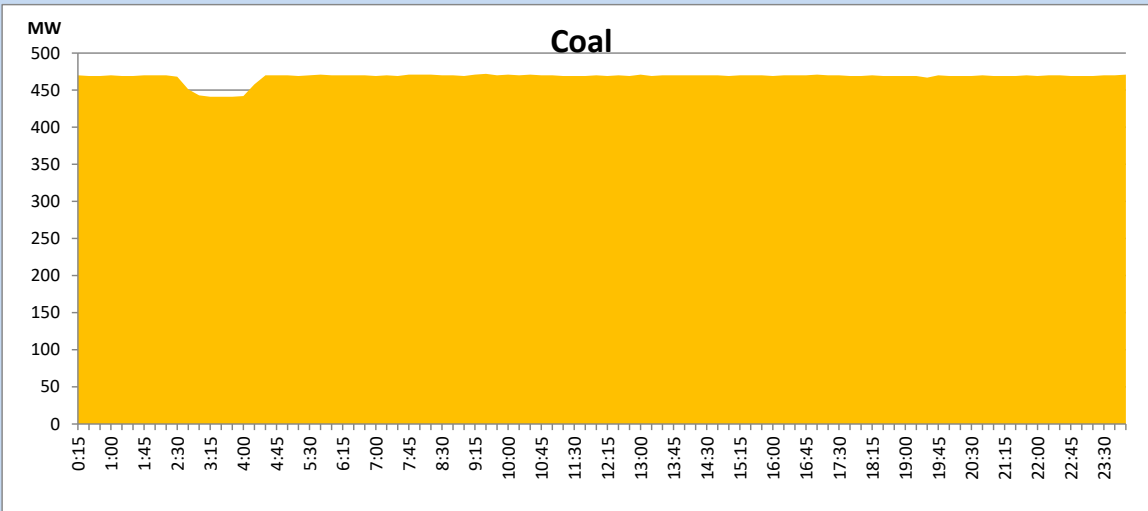
June 28, 2023



Solar and wind data is based on Telemetered Power Stations only

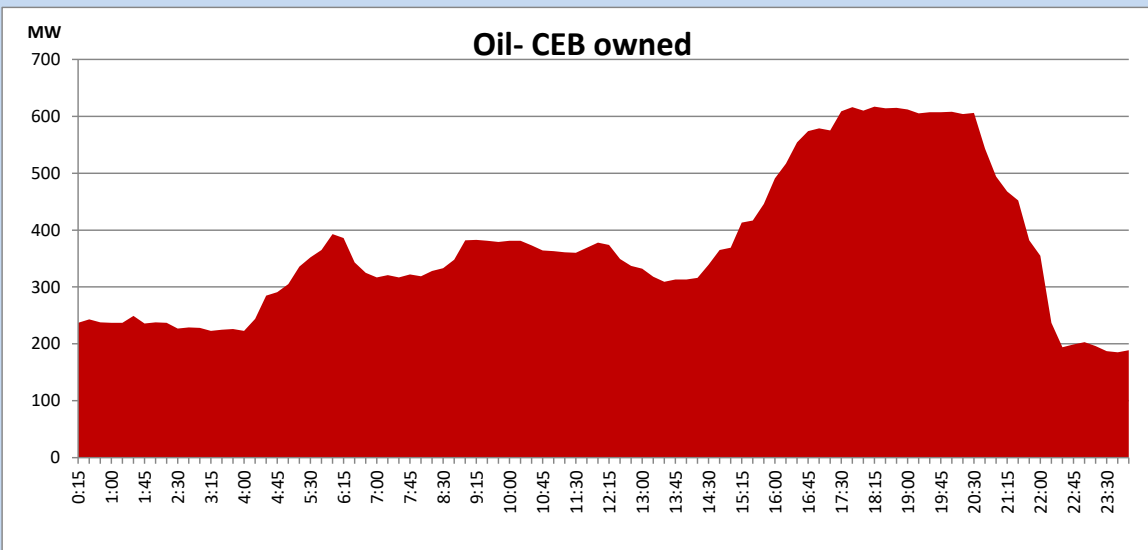
Coal Generation during

June 28, 2023



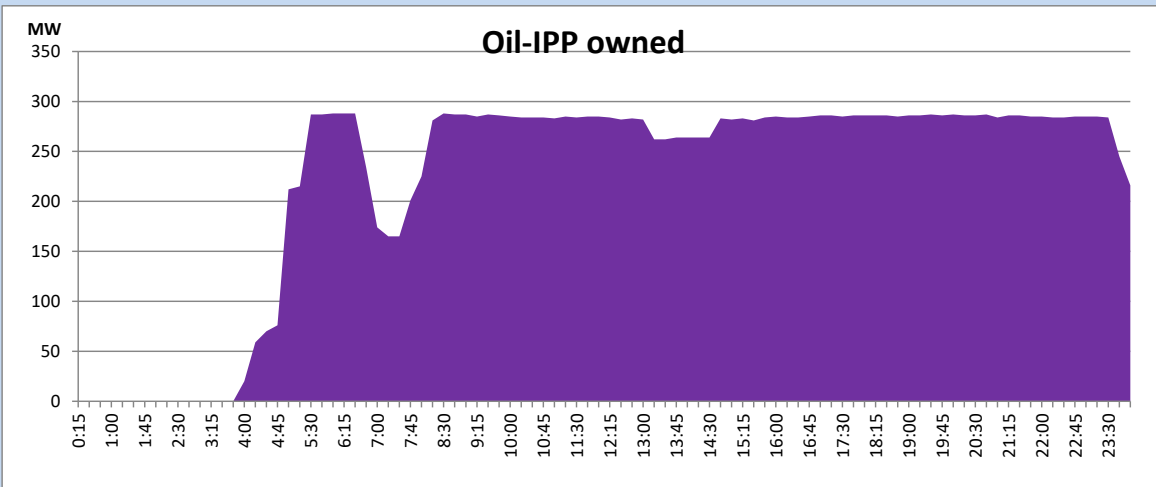
CEB Oil Plant Generation during

June 28, 2023



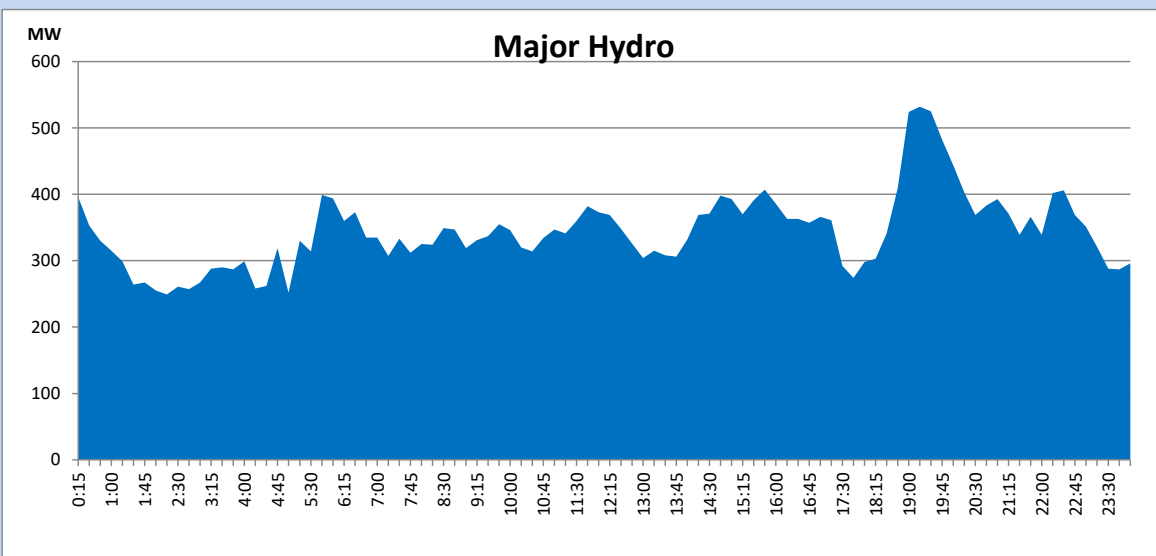
IPP Oil Plant Generation during

June 28, 2023



Major Hydro Generation during

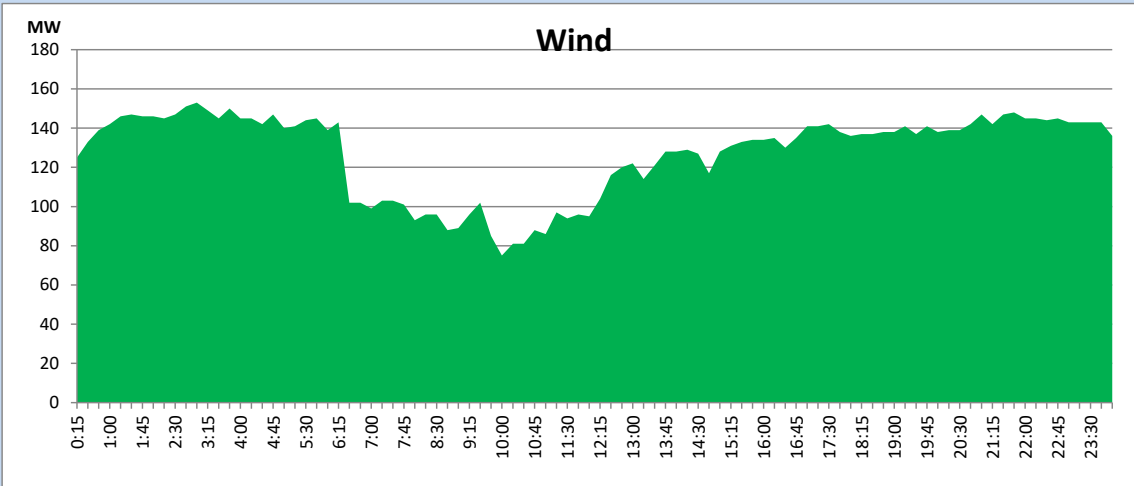
June 28, 2023



Wind Generation during

June 28, 2023

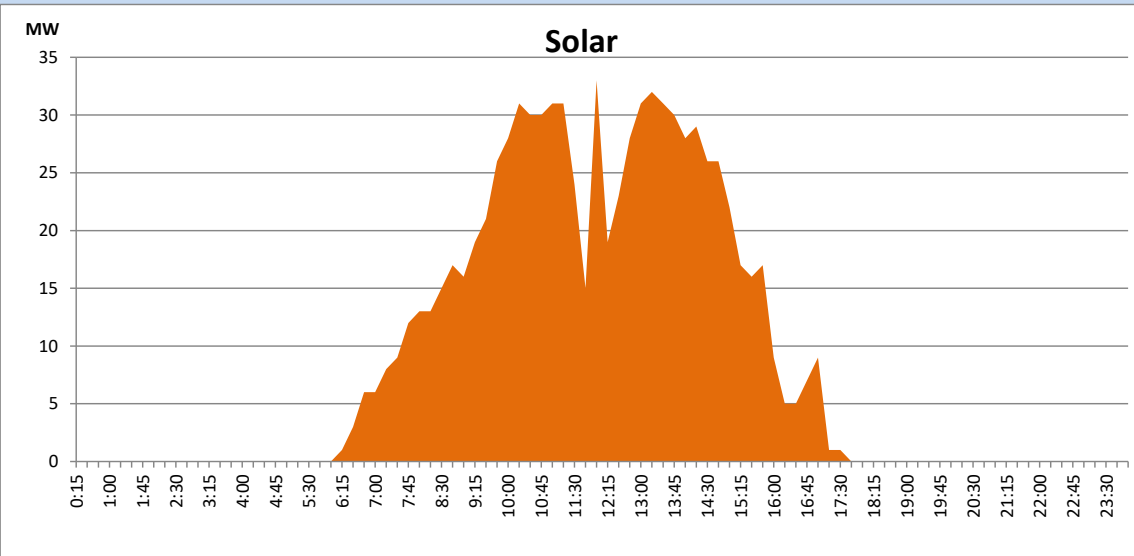
Based on Telemetered Power Stations only



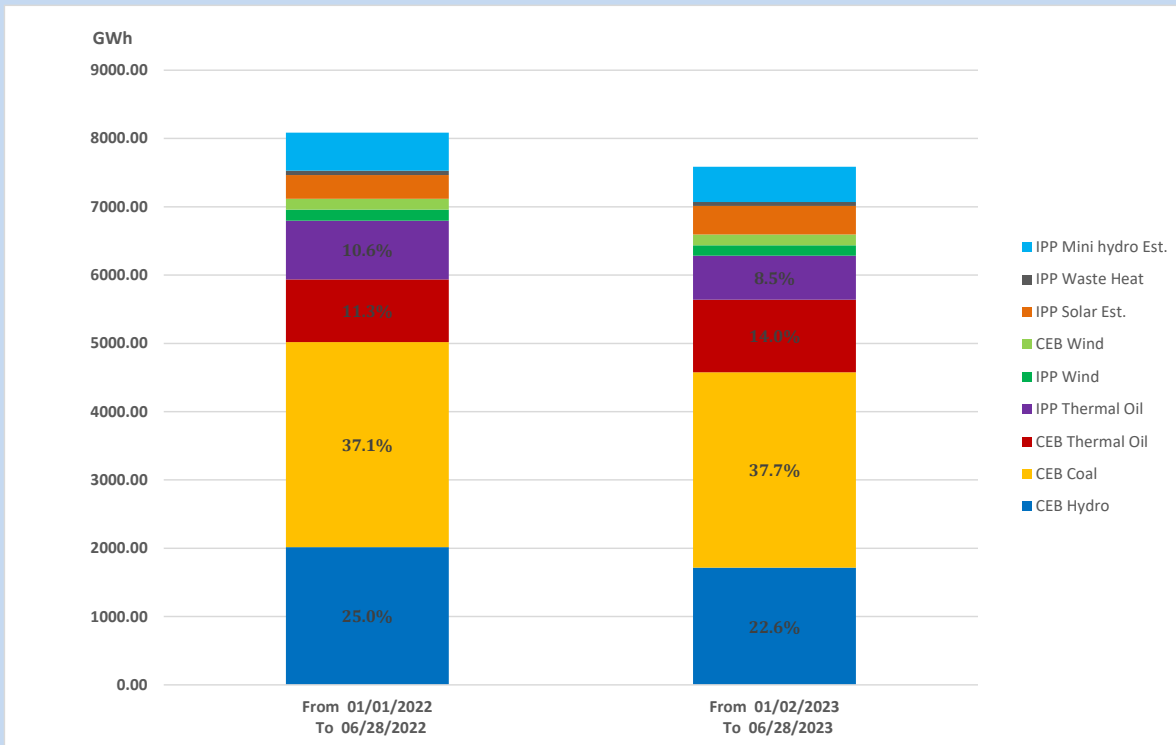
Solar Generation during

June 28, 2023

Based on Telemetered Power Stations only



15. Cumulative Dispatch Comparison with Last Year



The above figures are including contribution from roof top solar, non telemetered solar and mini hydro plants

Cumulative dispatch

From 01/01/2022 To 06/28/2022

8086 GWh

From 01/01/2023 To 06/28/2023

7591 GWh

Thermal Plant Fuel types

Power Station	Primary Fuel
CEB Thermal	
Sapugaskanda 1	Heavy Fuel
Sapugaskanda 2	Heavy Fuel
Kelanitissa Small Gas Turbines	Auto Diesel
GT 7 - Kelanitissa	Auto Diesel
Kelanitissa CCY	Naphtha or Diesel
Lakvijaya 1	Coal
Lakvijaya 2	Coal
Lakvijaya 3	Coal
Uthuru Janani	Heavy Fuel
Barge CEB	Heavy Fuel
KCCPS -2	Auto Diesel

Power Station	Primary Fuel
Private Thermal	
West Coast	Auto Diesel / Heavy Fuel

Major Incidents reported during the day

June 28, 2023

- 1) Rantambe unit 02 tripped at 14:03hrs rejecting 20MW from the system due to the tripping of unit T/F . Unit 02 is yet to resume generation.