

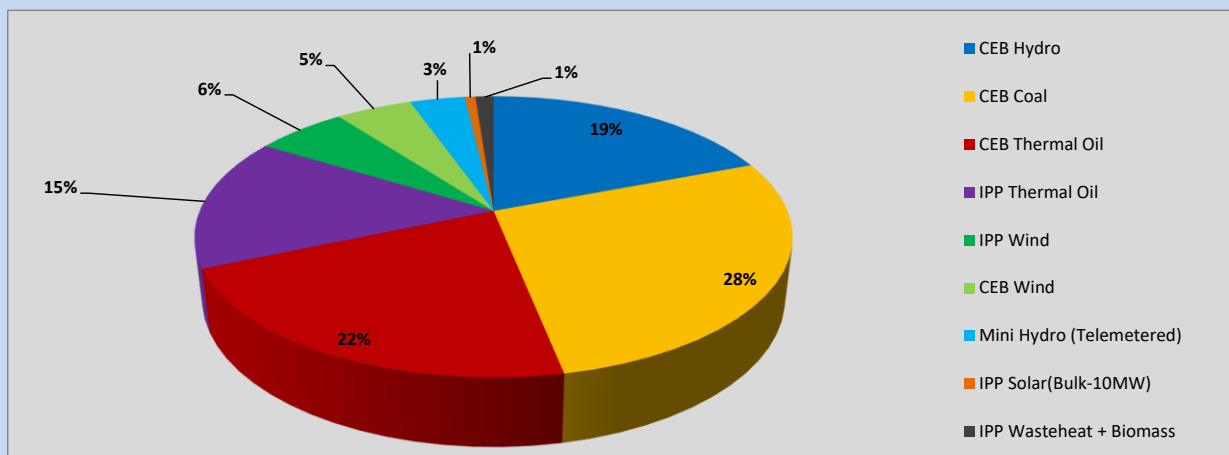
Generation and Reservoirs Statistics

June 27, 2023



PUBLIC UTILITIES COMMISSION OF SRI LANKA

1. Daily Generation Mix in MWh



CEB Hydro	7,821	MWh
CEB Coal	11,292	MWh
CEB Thermal Oil	8,851	MWh
IPP Thermal Oil	6,211	MWh
IPP Wind	2,395	MWh
CEB Wind	2,012	MWh
Mini Hydro (Telemetered)	1,455	MWh
IPP Solar (Bulk)	278	MWh
IPP Wasteheat + Biomass	479	MWh

Total Generation (Excluding estimated figures) 40,794 MWh

Estimated figures of CEB generation report

Estimated unserved energy = 0.00 GWh

Estimated Mini Hydro (Non telemetered) = 2625 MWh

Estimated IPP Solar PV (Bulk 1-10MW) = 304 MWh

Estimated Solar Roof Top PV = 1890 MWh

2. Cumulative Dispatch

Following data excludes the contribution from roof top solar, non telemetered solar and mini hydro plants

For Current Month

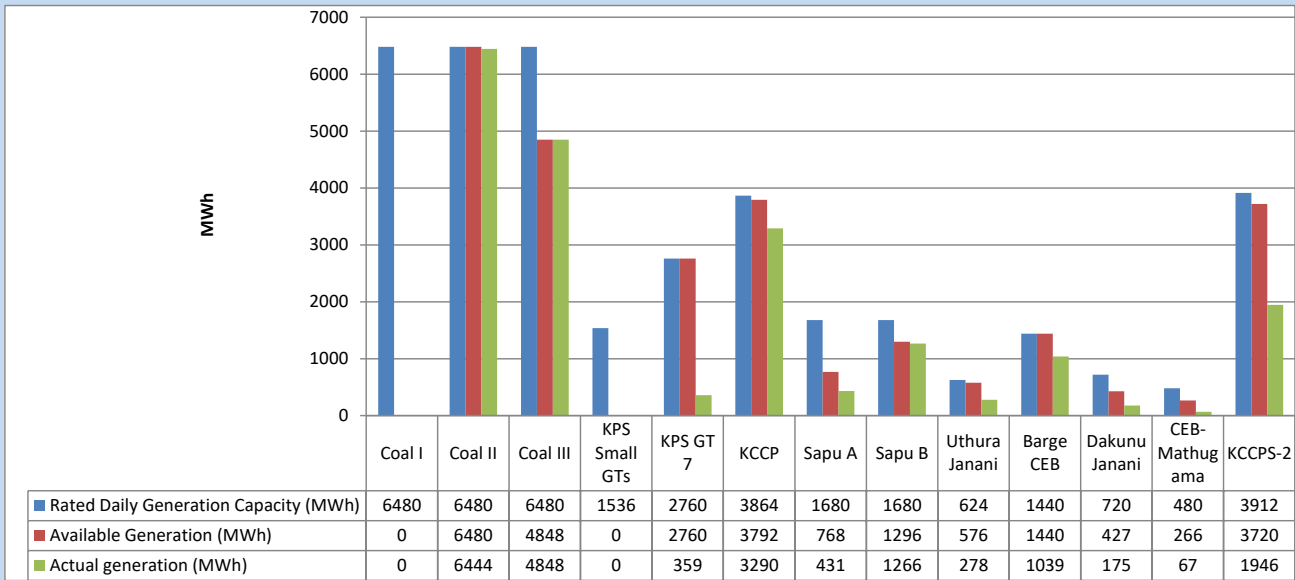
Category	Dispatch (GWh)	
CEB Hydro	232	21.56%
CEB Coal	354	32.90%
CEB Thermal Oil	211	19.63%
IPP Thermal	121	11.24%
SPP Wind	55	5.08%
CEB Wind	47	4.39%
Mini Hydro (Telemetered)	35	3.28%
IPP Solar(Bulk-10MW)	9	0.82%
IPP Wasteheat + BMP	12	1.09%
Total	1,077	

For Current Year

Category	Dispatch (GWh)	
CEB Hydro	1,713	25.06%
CEB Coal	2,849	41.69%
CEB Thermal Oil	1,059	15.49%
IPP Thermal	638	9.34%
SPP Wind	145	2.13%
CEB Wind	158	2.32%
Mini Hydro (Telemetered)	161	2.36%
IPP Solar(Bulk-10MW)	52	0.76%
IPP Wasteheat	59	0.86%
Total	6,834	

3. CEB owned Thermal Plant Dispatch

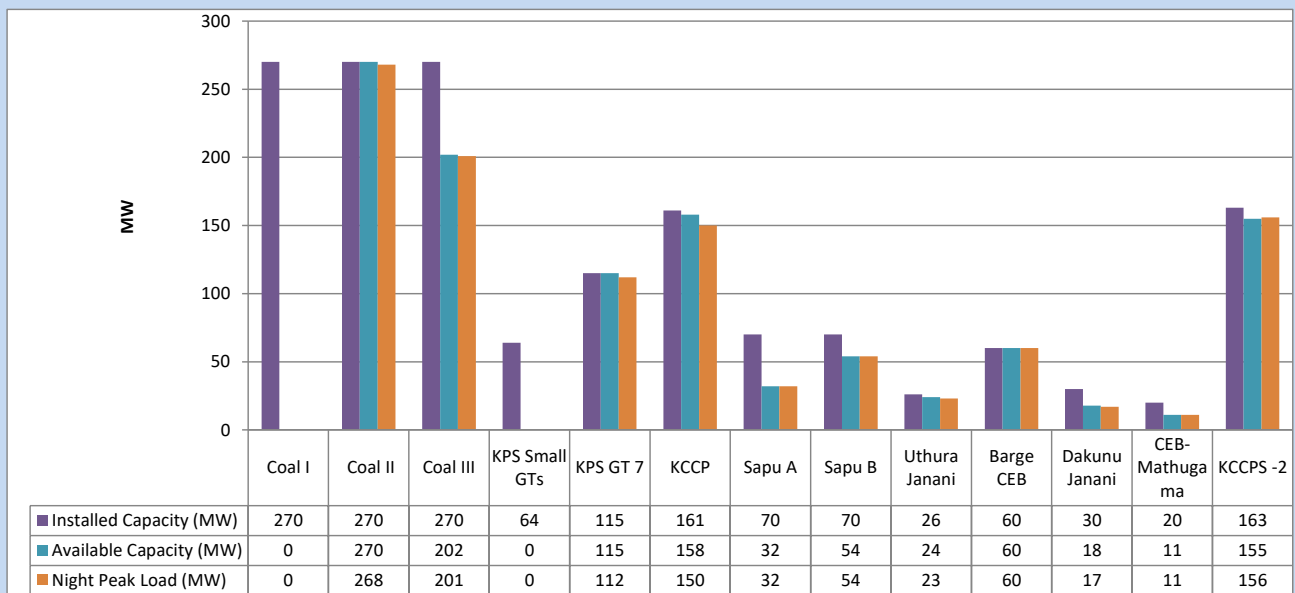
June 27, 2023



Available Generation is estimated based on plant availability at 6.00am on

June 28, 2023

4. CEB owned Thermal Plant Loading at the Night Peak

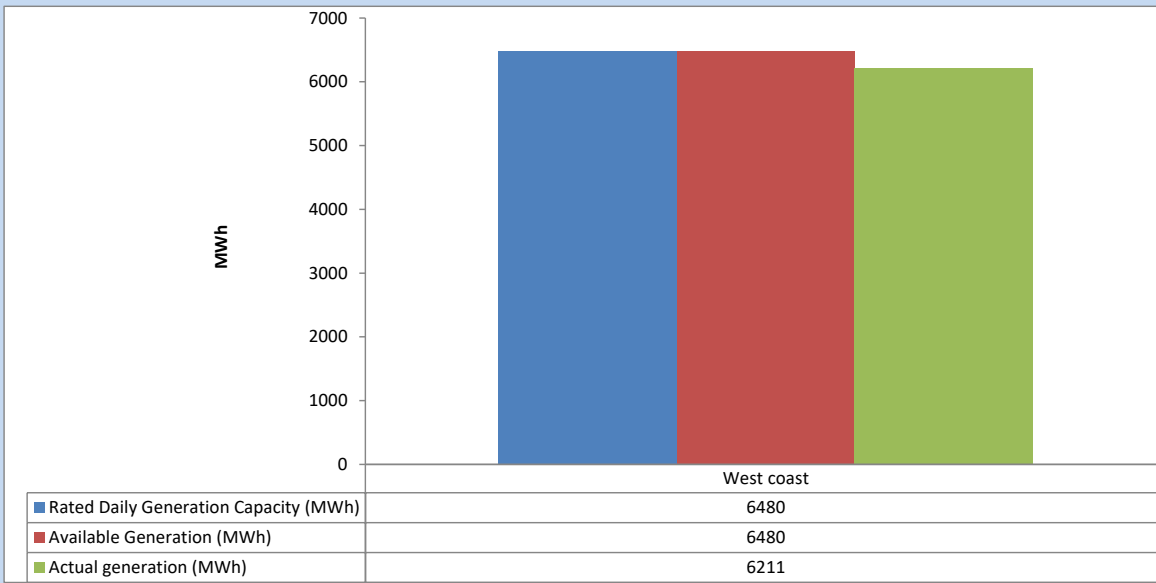


Plant availability is recorded at 6.00 am on

June 28, 2023

5. IPP owned Thermal Plant Dispatch

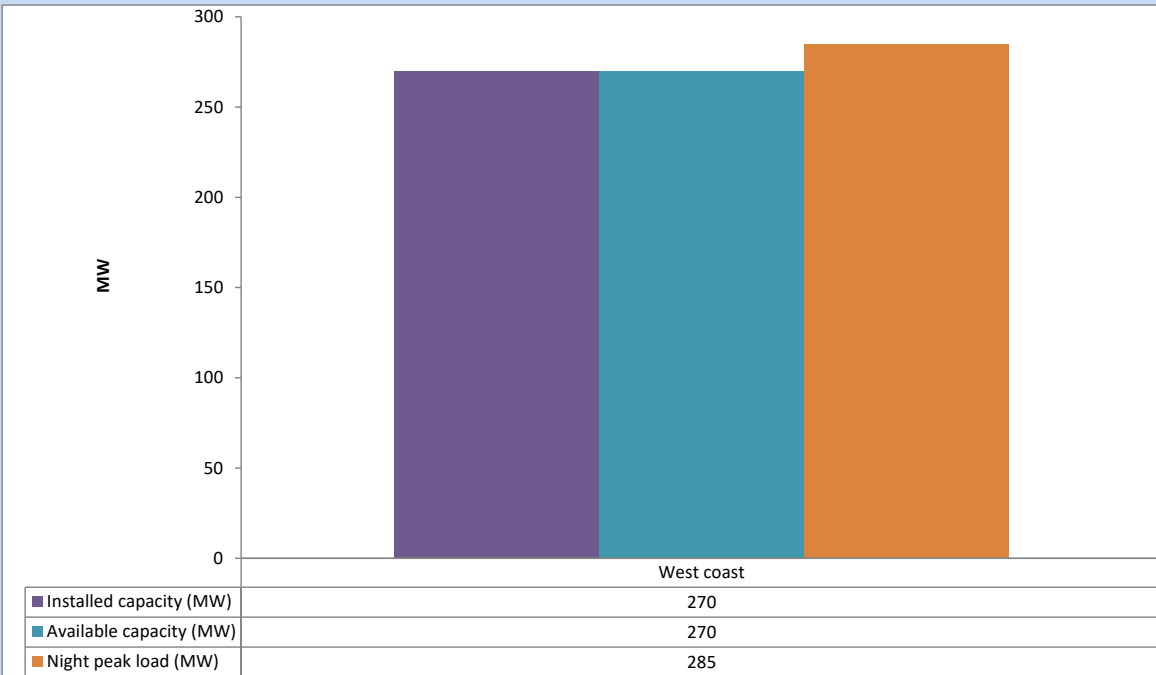
June 27, 2023



Available Generation is estimated based on plant availability at 6.00am on

June 28, 2023

6. IPP owned Thermal Plant Loading at the Night Peak

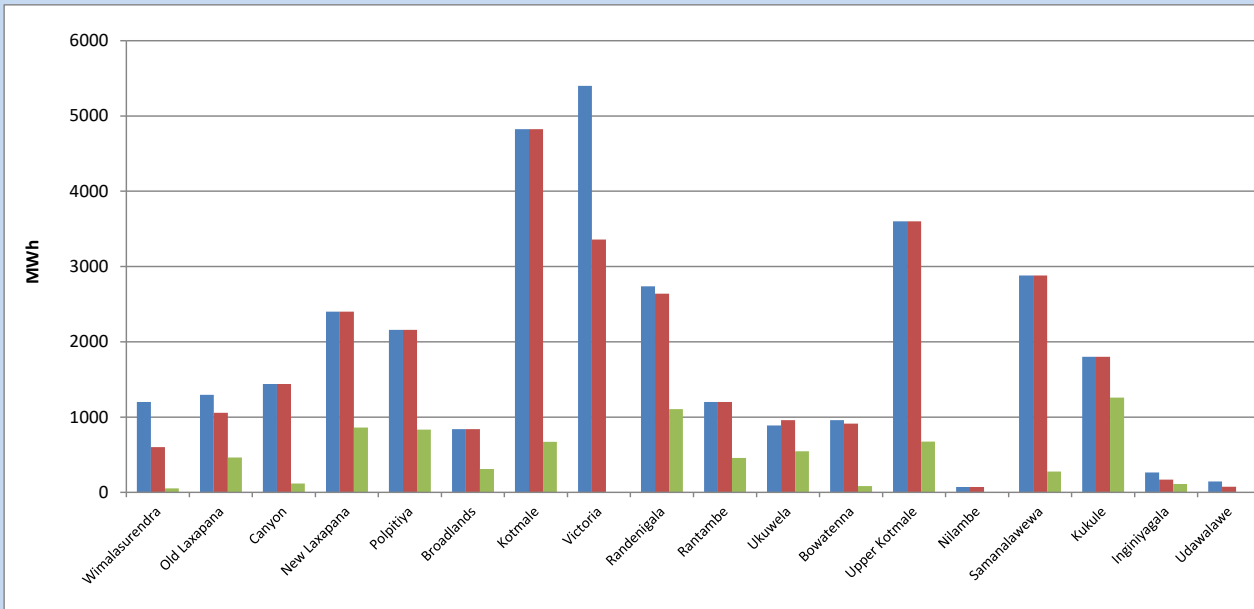


Plant availability is recorded at 6.00 am on

June 28, 2023

7. Major Hydro Plant Dispatch

June 27, 2023

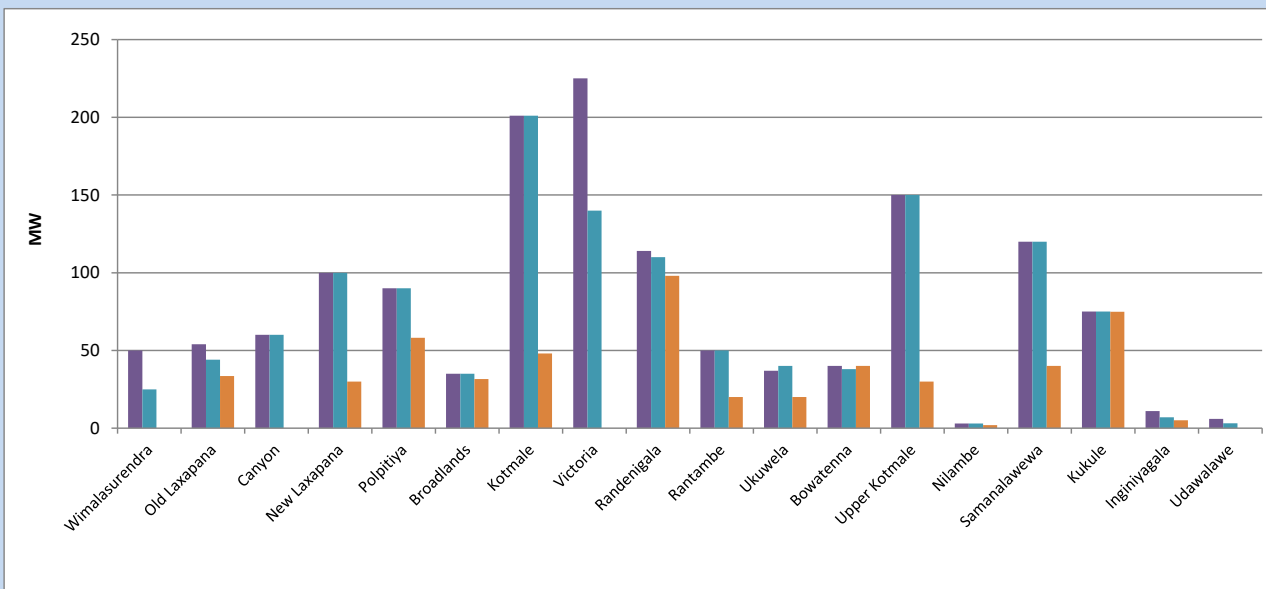


Available Generation is estimated based on plant availability at 6.00am on
Broadlands power plant is operating in the Commissioning Stage

June 28, 2023

8. Major Hydro Plant Loading at Night Peak

June 27, 2023



Plant availability is recorded at 6.00 am on
Broadlands power plant is operating in the Commissioning Stage

June 28, 2023

9. Summary of Major Plant performance

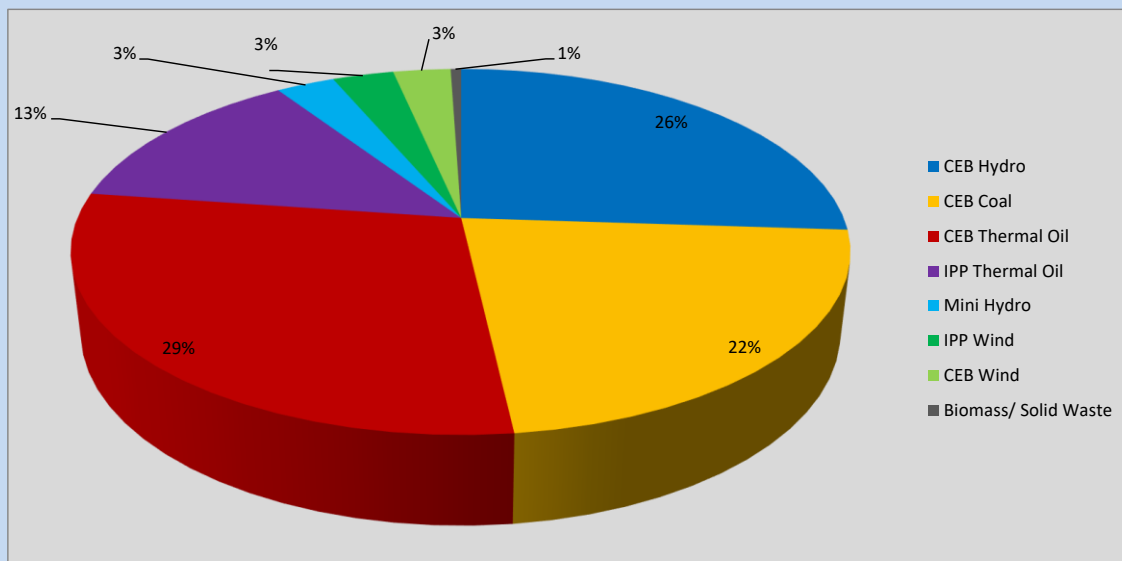
Plant	Installed Capacity	Plant Availability	Night peak Load	Plant Dispatch
	(MW)	(MW)	(MW)	(MWh)
Wimalasurendra	50	25	0	53
Old Laxapana	54	44	34	463
Canyon	60	60	0	118
New Laxapana	100	100	30	861
Polpitiya	90	90	58	834
Broadlands	35	35	32	309
Kotmale	201	201	48	670
Victoria	225	140	0	0
Randenigala	114	110	98	1,106
Rantambe	50	50	20	456
Ukuwela	37	40	20	547
Bowatenna	40	38	40	82
Upper Kotmale	150	150	30	675
Nilambe	3	3	2	4
Samanalawewa	120	120	40	275
Kukule	75	75	75	1,258
Inginiyagala	11	7	5	110
Udawalawe	6	3	0	0
Puttalam Coal I	270	0	0	0
Puttalam Coal II	270	270	268	6,444
Puttalam Coal III	270	202	201	4,848
KPS Small GTs	64	0	0	0
KPS GT 7	115	115	112	359
KCCP	161	158	150	3,290
Sapugaskanda A	70	32	32	431
Sapugaskanda B	70	54	54	1,266
Uthura Janani	26	24	23	278
Barge CEB	60	60	60	1,039
CEB-Hambantota	30	18	17	175
CEB-Mathugama	20	11	11	67
ACE Matara	24	0	0	0
Asia Power	50	0	0	0
KCCPS -2	163	155	156	1,946
West Coast	270	270	285	6,211
Nothern Power	36	0	0	0
ACE Embilipitiya	93	0	0	0
Total	3,483	2,660	2,097	40,794

Plant availability is the availability recorded at 6 am on

June 28, 2023

10. Contribution to the Night Peak in MW

June 27, 2023



CEB Hydro	551 MW
CEB Coal	469 MW
CEB Thermal Oil	615 MW
IPP Thermal Oil	285 MW
IPP Wind	64.1 MW
CEB Wind	60.2 MW
Mini Hydro (Telemetered)	61 MW
Biomass and Solid Waste	11 MW

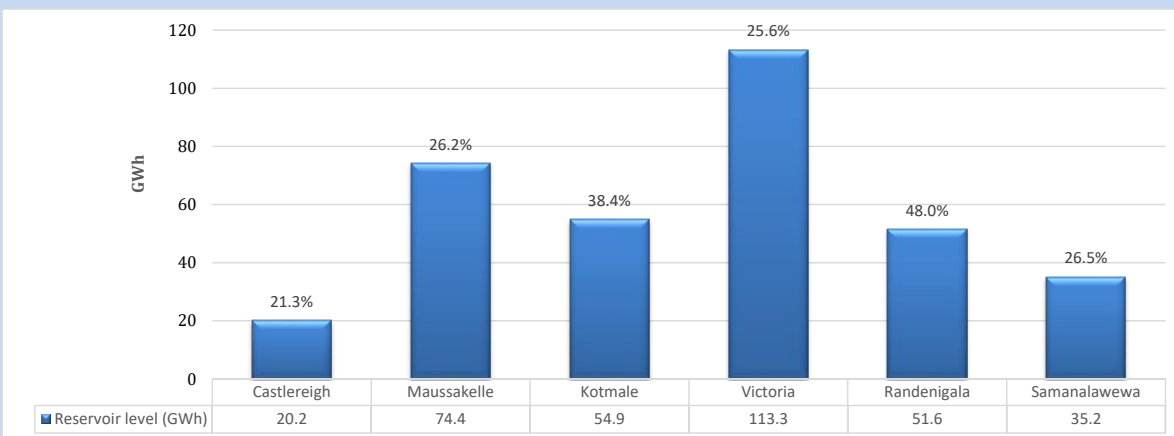
Recorded Peak Demand Data

Night Peak*	2,117 MW
Day Peak Maximum Demand	1,912 MW
Day Peak Minimum Demand	1,660 MW
Off Peak Minimum Demand	1,207 MW

Above figures are excluding contribution from roof top solar, non telemetered solar and mini hydro plants

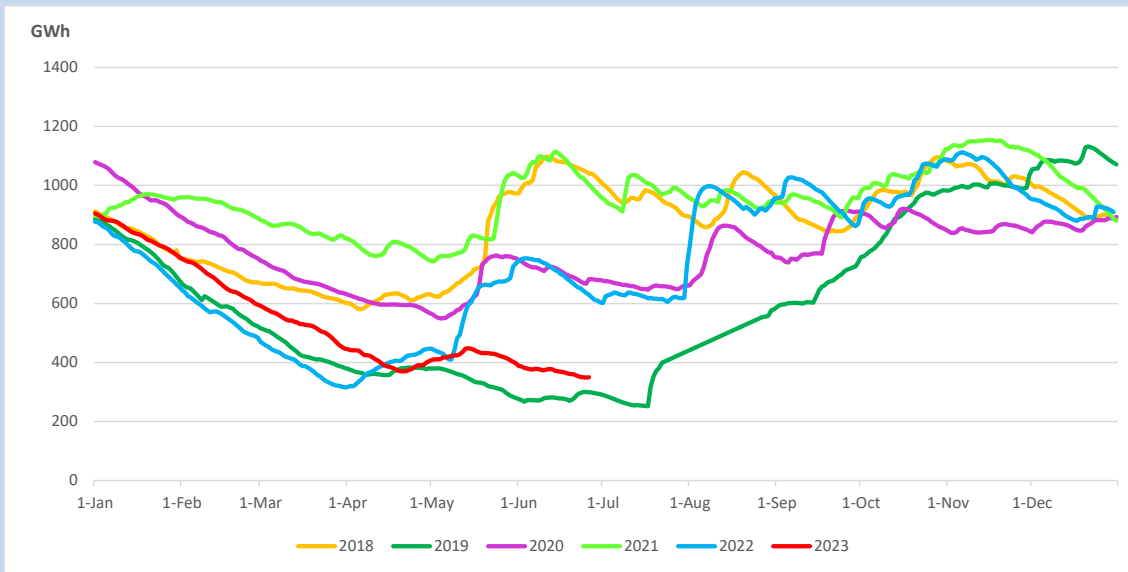
Reservoir Levels -

as at 06.00 Hr on June 28, 2023

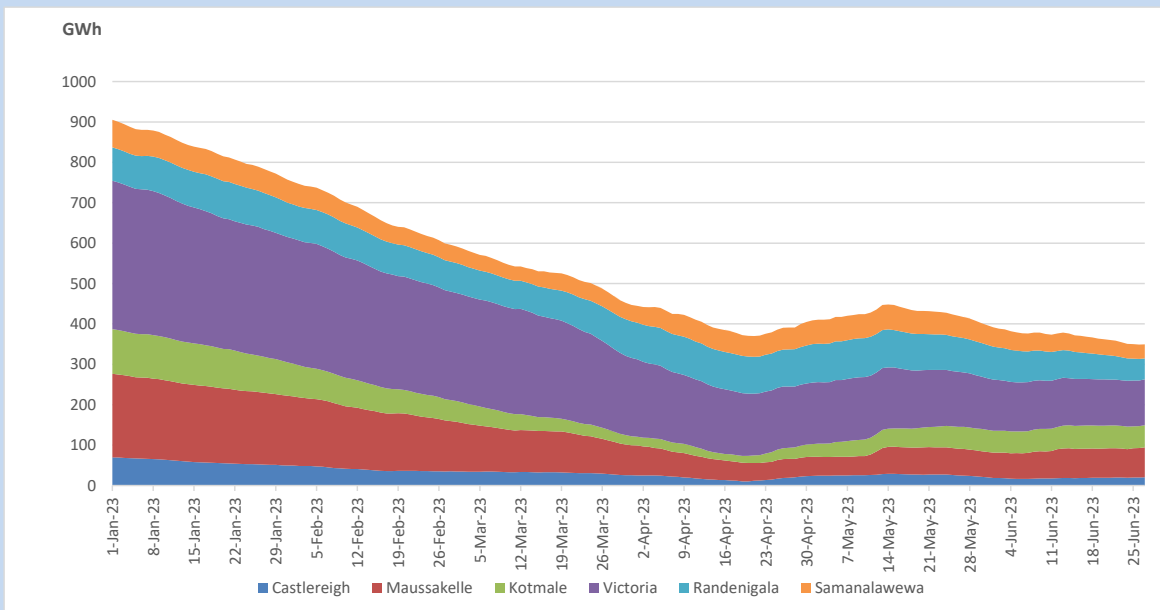


Total Reservoir Level	349.6 GWh
% of Total capacity	29.0%

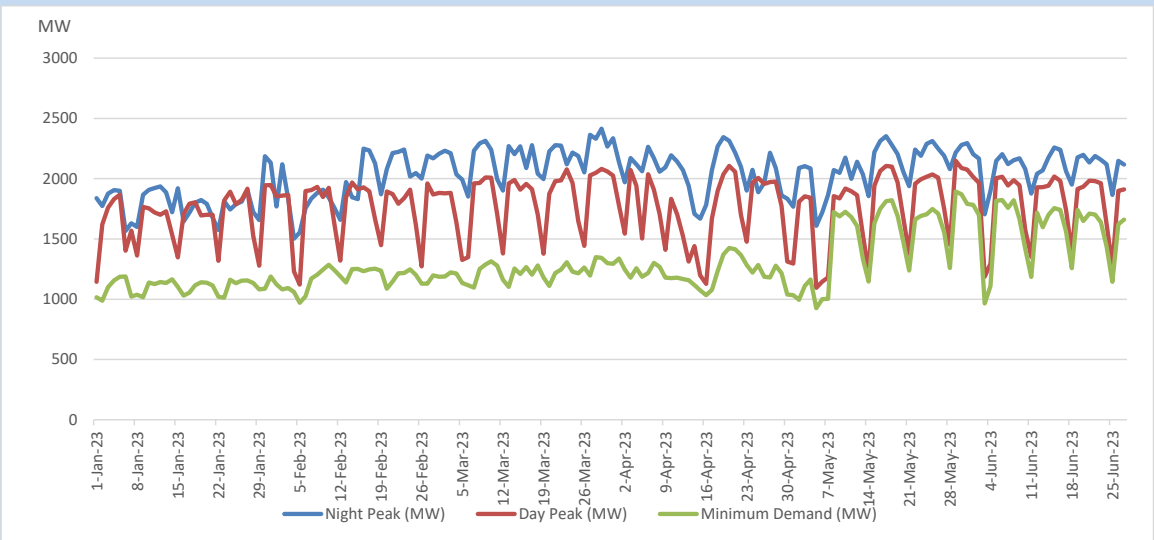
11. Comparison of Total Reservoir Storage Levels with Past Years



12. Variation of Major Hydro Reservoir Levels in the current year (GWh)



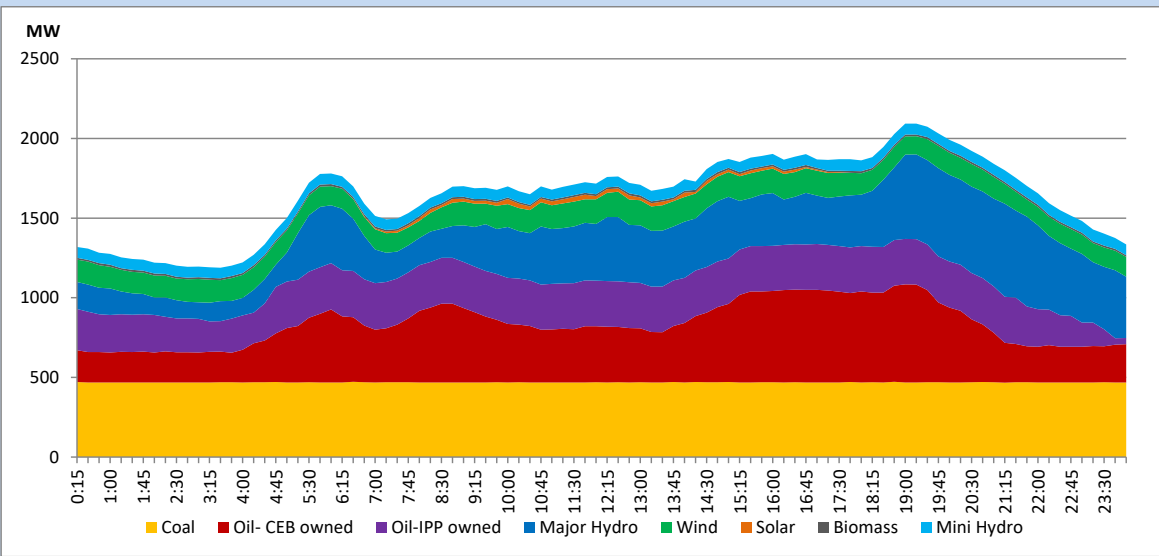
13. Variation of Demand during the current year



The above figures are excluding contribution from roof top solar, non telemetered solar and mini hydro plants

14. Daily Load Curve

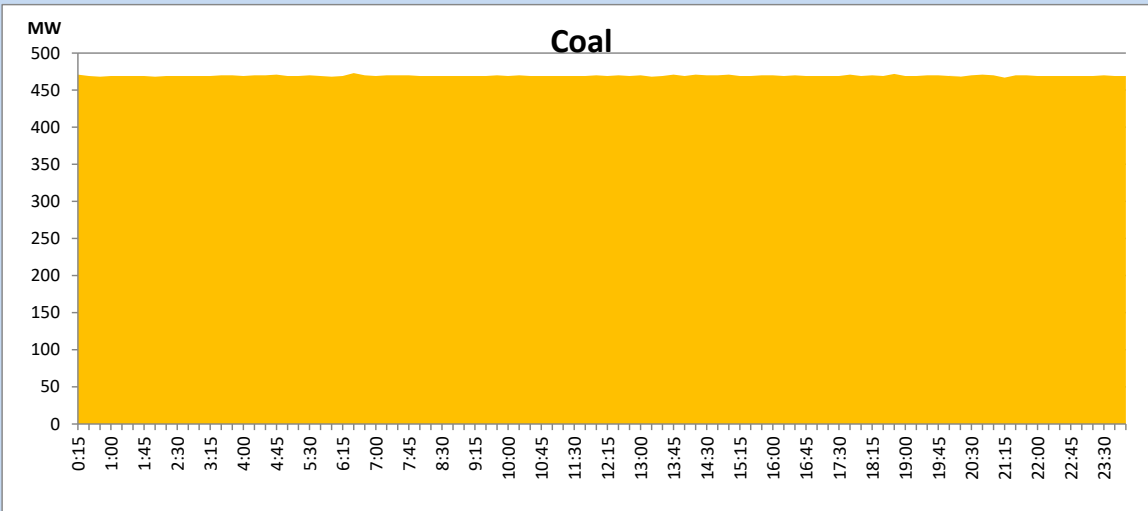
June 27, 2023



Solar and wind data is based on Telemetered Power Stations only

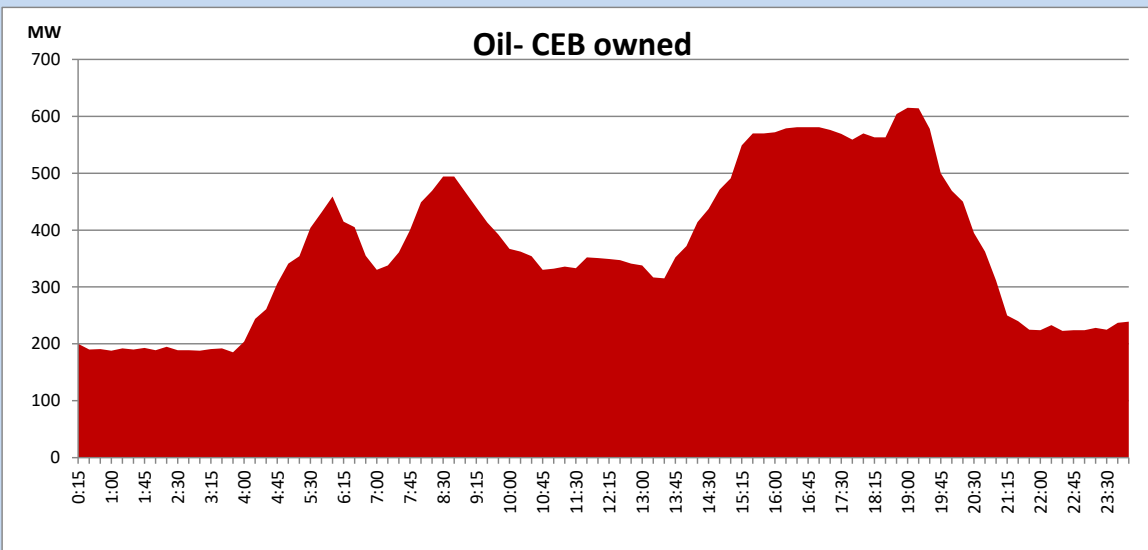
Coal Generation during

June 27, 2023



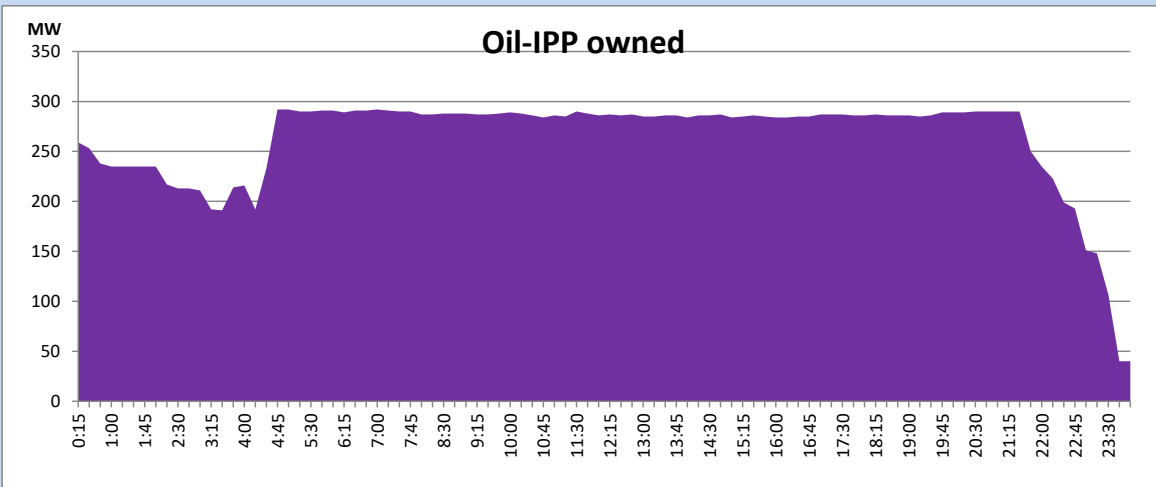
CEB Oil Plant Generation during

June 27, 2023



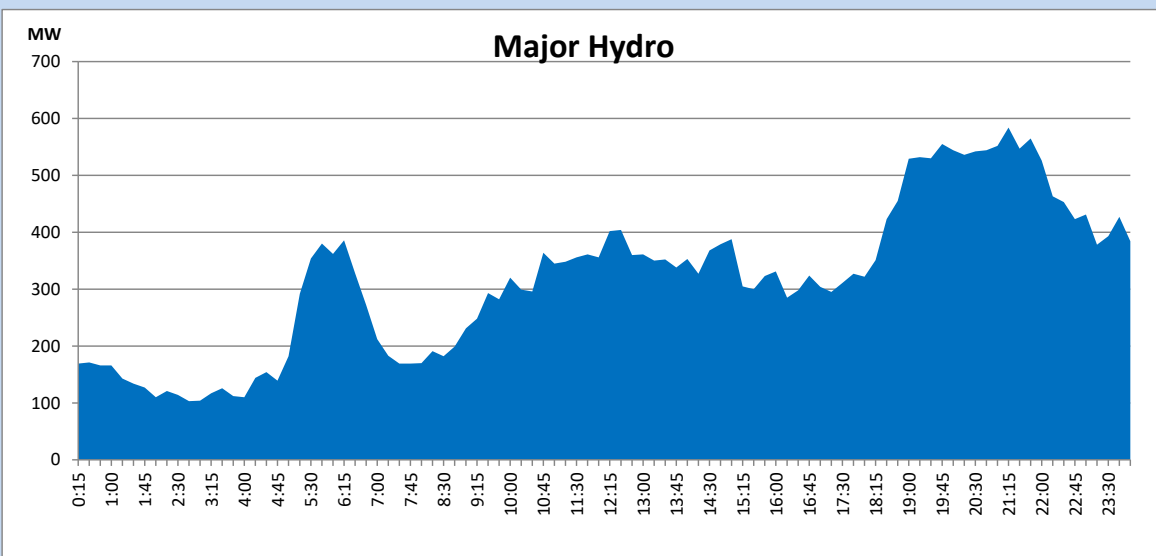
IPP Oil Plant Generation during

June 27, 2023



Major Hydro Generation during

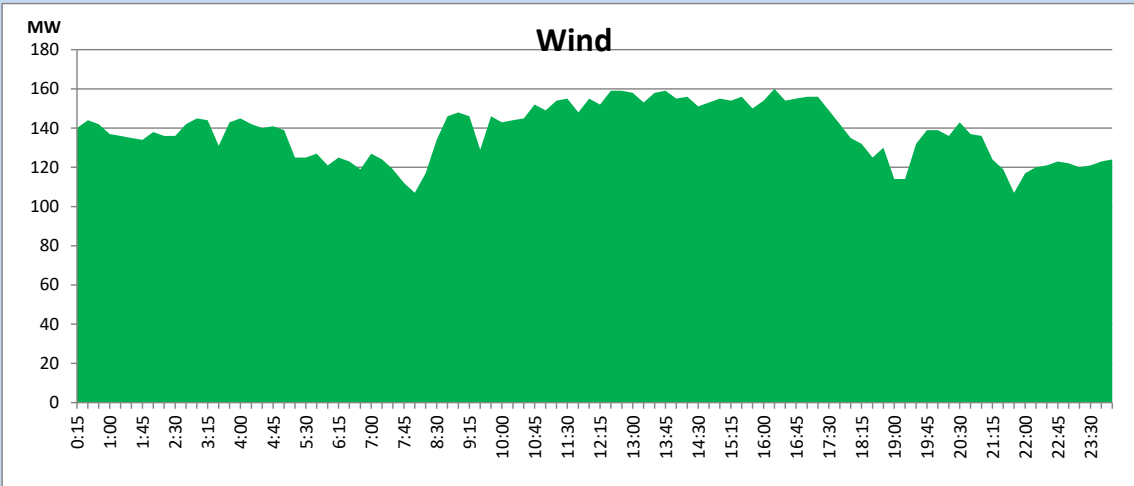
June 27, 2023



Wind Generation during

June 27, 2023

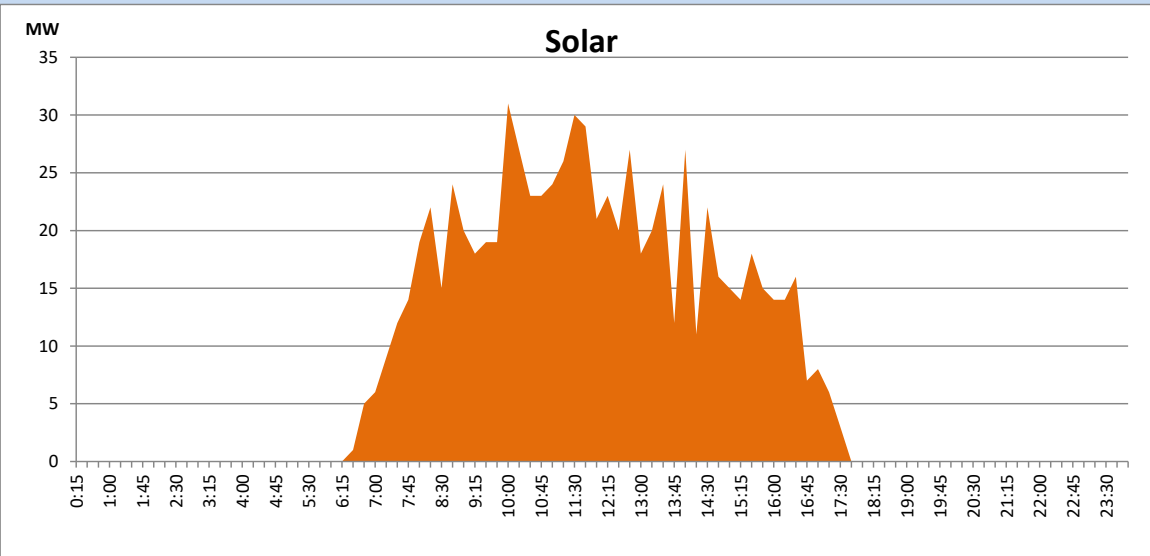
Based on Telemetered Power Stations only



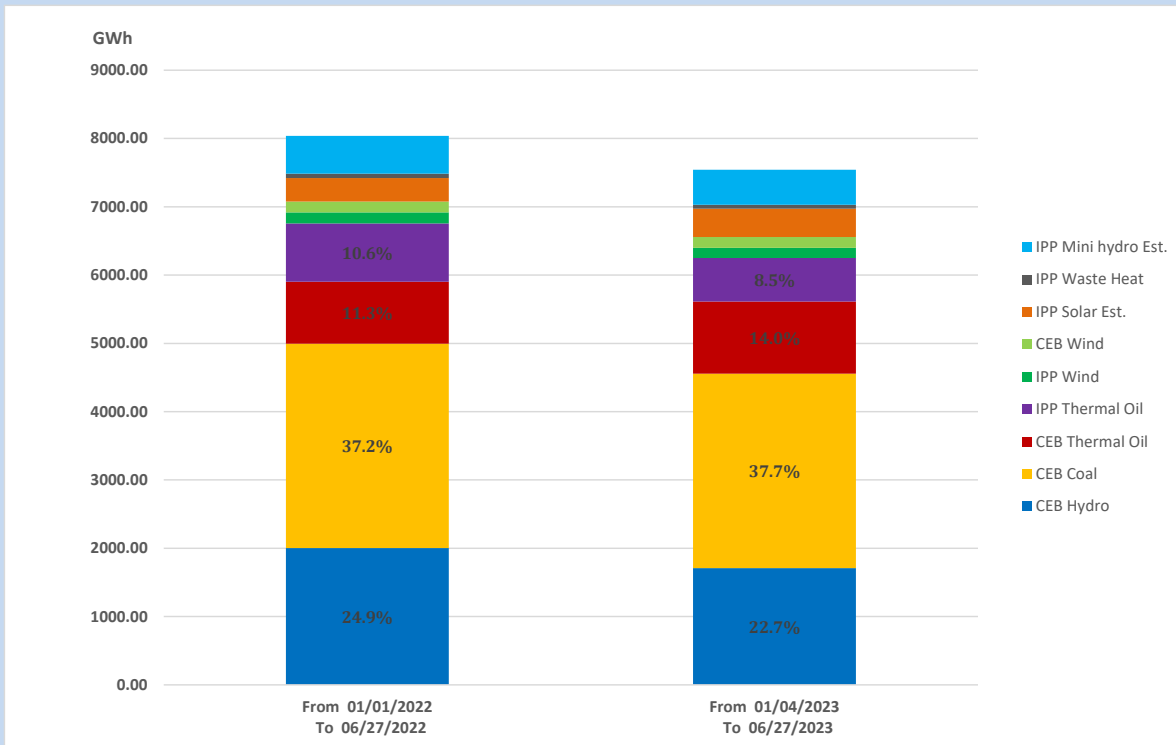
Solar Generation during

June 27, 2023

Based on Telemetered Power Stations only



15. Cumulative Dispatch Comparison with Last Year



The above figures are including contribution from roof top solar, non telemetered solar and mini hydro plants

Cumulative dispatch

From 01/01/2022 To 06/27/2022

8039 GWh

From 01/01/2023 To 06/27/2023

7546 GWh

Thermal Plant Fuel types

Power Station	Primary Fuel
CEB Thermal	
Sapugaskanda 1	Heavy Fuel
Sapugaskanda 2	Heavy Fuel
Kelanitissa Small Gas Turbines	Auto Diesel
GT 7 - Kelanitissa	Auto Diesel
Kelanitissa CCY	Naphtha or Diesel
Lakvijaya 1	Coal
Lakvijaya 2	Coal
Lakvijaya 3	Coal
Uthuru Janani	Heavy Fuel
Barge CEB	Heavy Fuel
KCCPS -2	Auto Diesel

Power Station	Primary Fuel
Private Thermal	
West Coast	Auto Diesel / Heavy Fuel

Major Incidents reported during the day

June 27, 2023

- 1) Padukka-Oruwala 132kv cct tripped and A/R from Padukka end at 16:42hrs due to the operation of distance protection.