

# Generation and Reservoirs Statistics

July 25, 2023



PUBLIC UTILITIES COMMISSION OF SRI LANKA

## 1. Daily Generation Mix in MWh

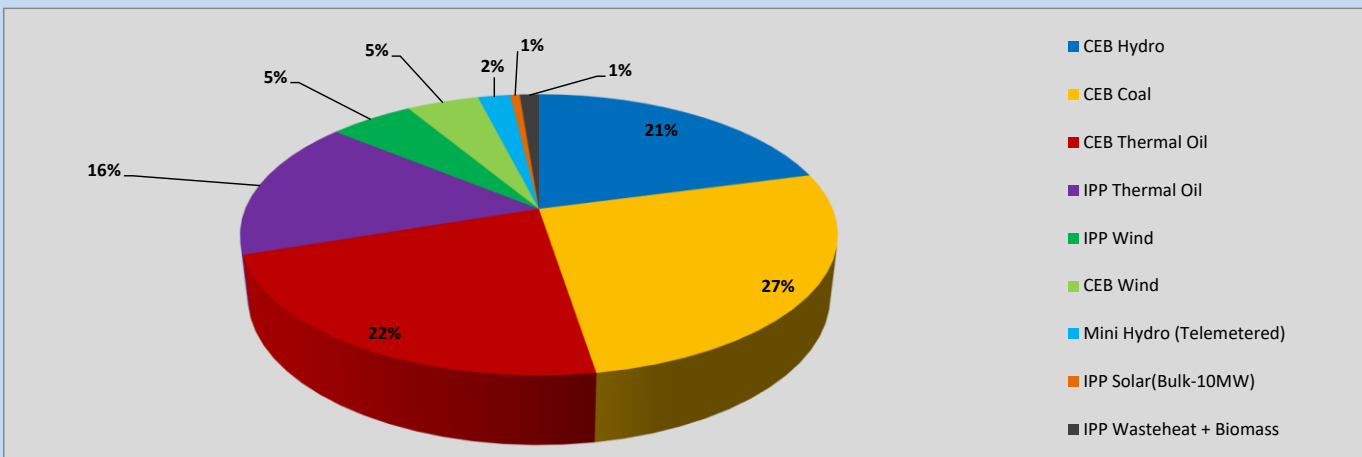


Table 01

CEB Hydro	8,765	MWh
CEB Coal	11,201	MWh
CEB Thermal Oil	9,431	MWh
IPP Thermal Oil	6,757	MWh
IPP Wind	2,297	MWh
CEB Wind	1,972	MWh
Mini Hydro (Telemetered)	879	MWh
IPP Solar (Bulk)	258	MWh
IPP Wasteheat + Biomass	522	MWh
<b>Total Generation (Excluding estimated figures)</b>	<b>42,082</b>	<b>MWh</b>
* Estimated unserved energy	0	MWh
* Estimated Mini Hydro (Non telemetered)	2631	MWh
* Estimated IPP Solar PV (Bulk 1-10MW)	304	MWh
* Estimated Solar Roof Top PV	1650	MWh
<b>Total Generation (Including estimated figures)</b>	<b>46,667</b>	<b>MWh</b>

\* Estimated figures of CEB generation report

## 2. Cumulative Dispatch

Following data excludes the contribution from roof top solar, non telemetered solar and mini hydro plants

Table 02 - Current Month

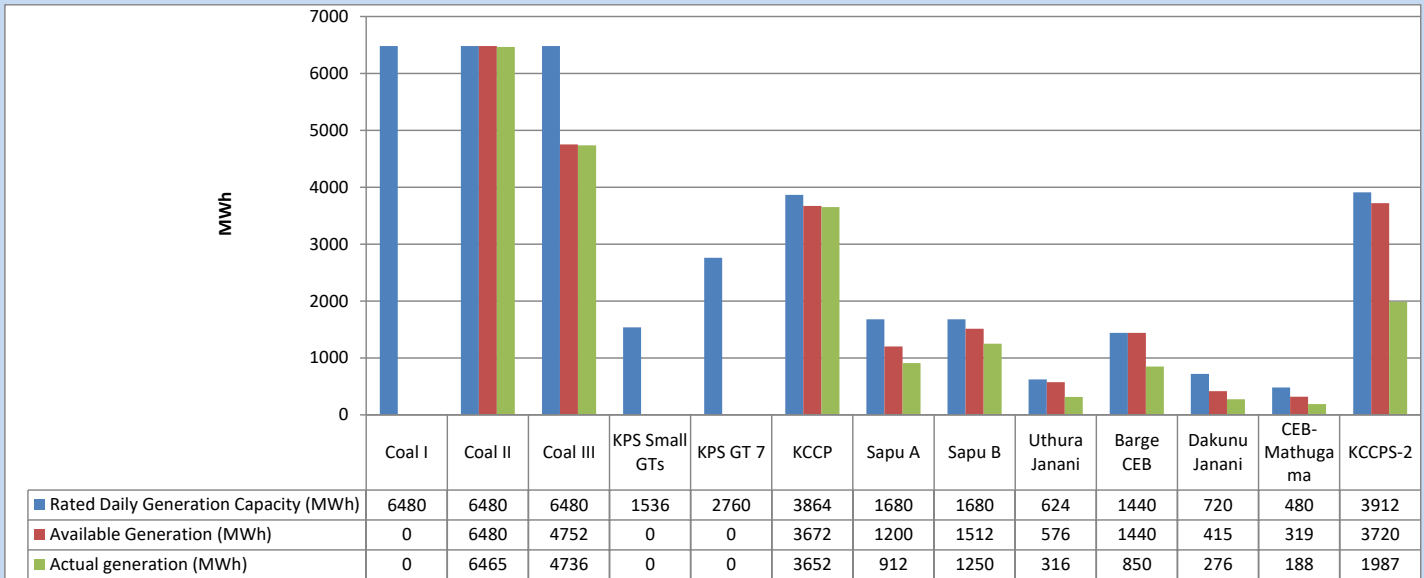
Category	Dispatch (GWh)	
CEB Hydro	261	26.90%
CEB Coal	282	29.06%
CEB Thermal Oil	168	17.31%
IPP Thermal	117	12.00%
SPP Wind	50	5.12%
CEB Wind	44	4.49%
Mini Hydro (Telemetered)	32	3.26%
IPP Solar (Bulk-10MW)	8	0.82%
IPP Wasteheat + BMP	10	1.05%
<b>Total</b>	<b>971</b>	

Table 03 - Current Year

Category	Dispatch (GWh)	
CEB Hydro	1,999	25.23%
CEB Coal	3,165	39.94%
CEB Thermal Oil	1,252	15.80%
IPP Thermal	771	9.72%
SPP Wind	201	2.54%
CEB Wind	208	2.62%
Mini Hydro (Telemetered)	198	2.49%
IPP Solar (Bulk-10MW)	61	0.77%
IPP Wasteheat	70	0.89%
<b>Total</b>	<b>7,924</b>	

### 3. CEB owned Thermal Plant Dispatch

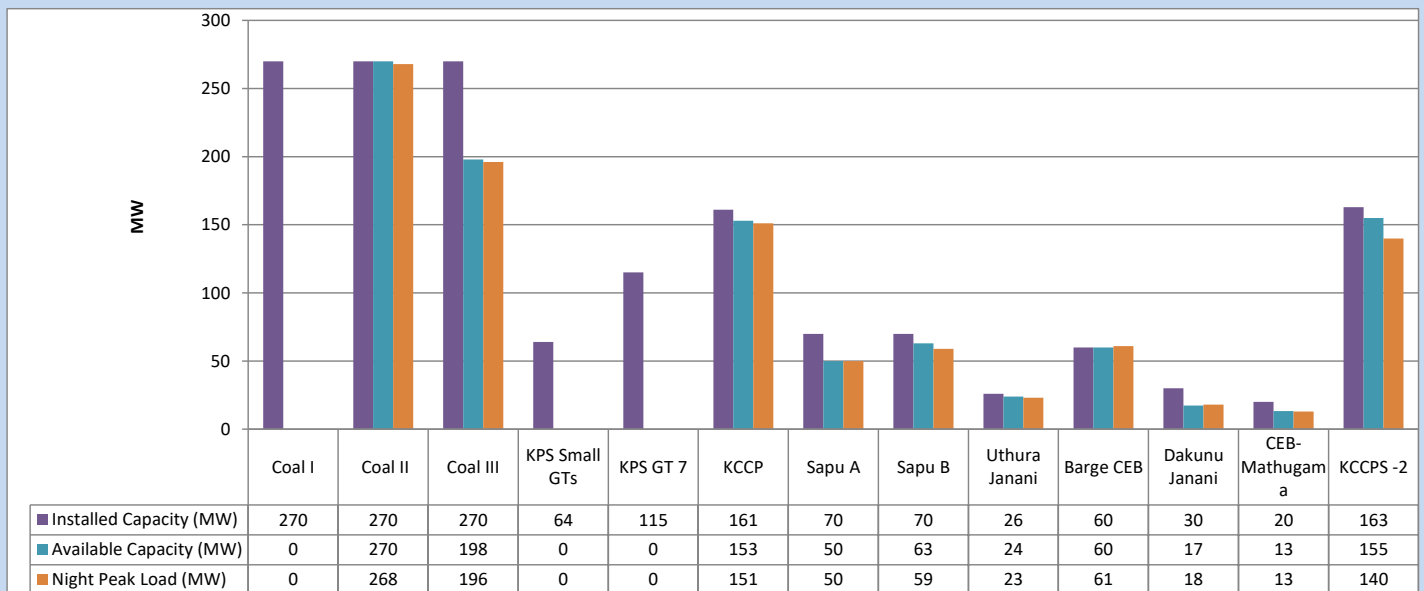
July 25, 2023



Available Generation is estimated based on plant availability at 6.00am on

July 26, 2023

### 4. CEB owned Thermal Plant Loading at the Night Peak

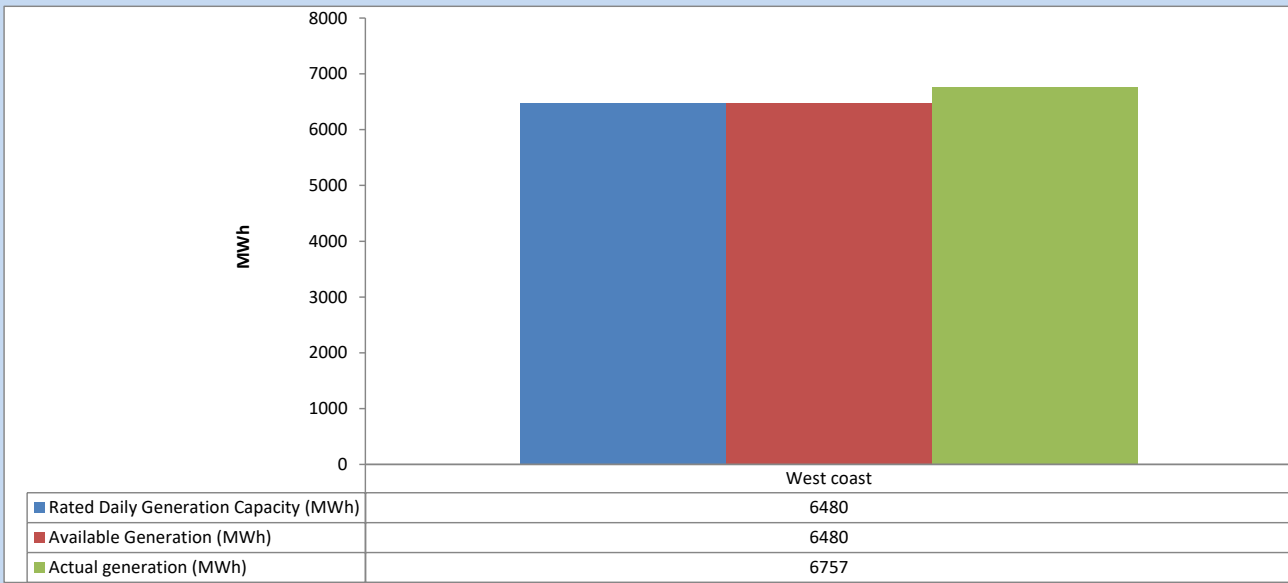


Plant availability is recorded at 6.00 am on

July 26, 2023

## 5. IPP owned Thermal Plant Dispatch

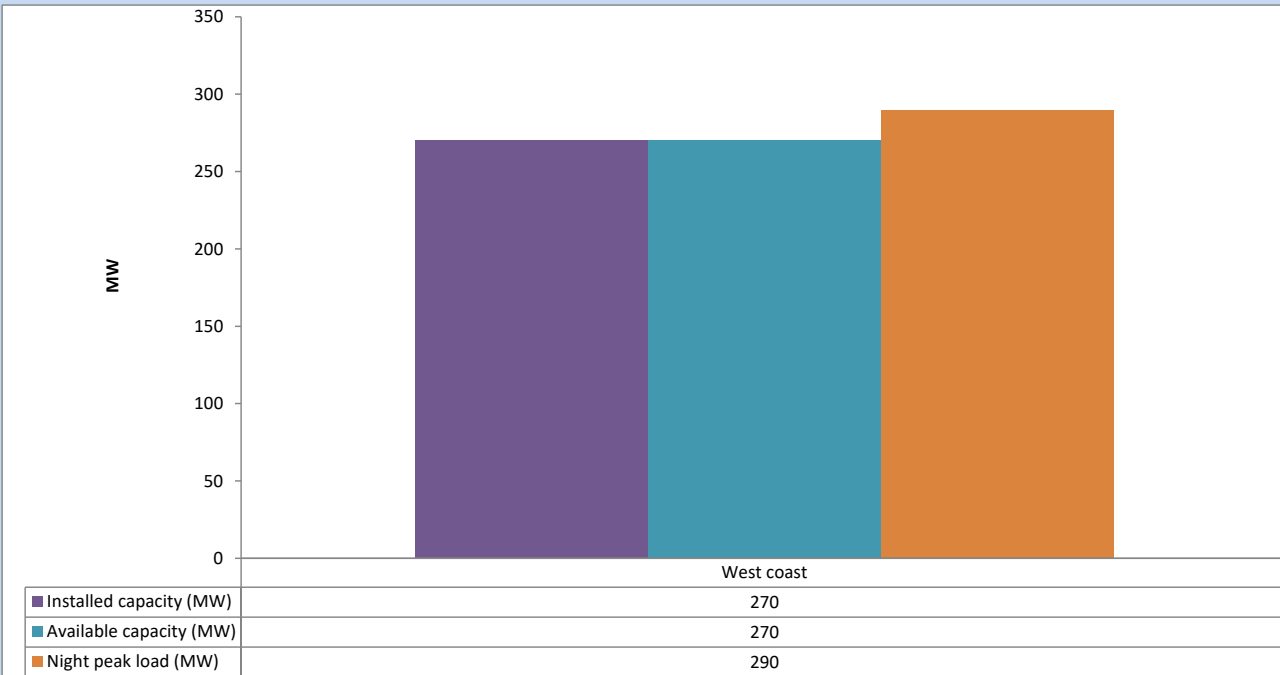
July 25, 2023



Available Generation is estimated based on plant availability at 6.00am on

July 26, 2023

## 6. IPP owned Thermal Plant Loading at the Night Peak

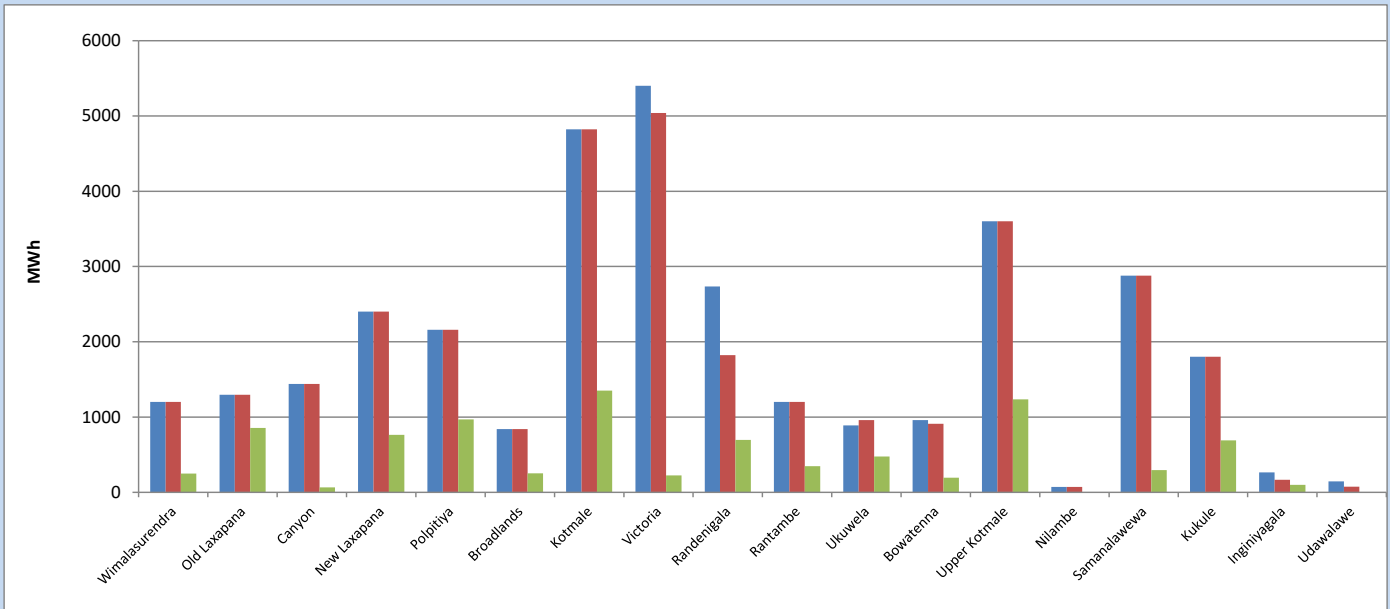


Plant availability is recorded at 6.00 am on

July 26, 2023

## 7. Major Hydro Plant Dispatch

July 25, 2023

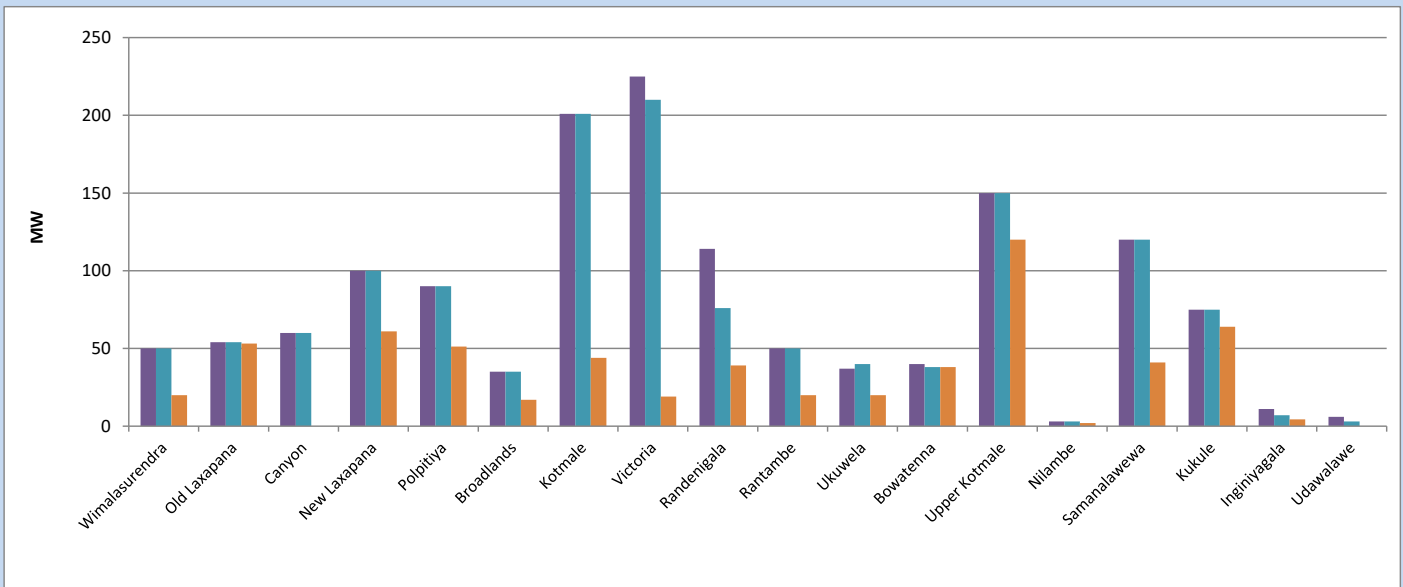


Available Generation is estimated based on plant availability at 6.00am on  
Broadlands power plant is operating in the Commissioning Stage

July 26, 2023

## 8. Major Hydro Plant Loading at Night Peak

July 25, 2023



Plant availability is recorded at 6.00 am on  
Broadlands power plant is operating in the Commissioning Stage

July 26, 2023

## 9. Summary of Major Plant performance

Table 04

Plant	Installed Capacity	Plant Availability	Night peak Load	Plant Dispatch
	(MW)	(MW)	(MW)	(MWh)
Wimalasurendra	50	50	20	251
Old Laxapana	54	54	53	855
Canyon	60	60	0	65
New Laxapana	100	100	61	763
Polpitiya	90	90	51	968
Broadlands	35	35	17	252
Kotmale	201	201	44	1,350
Victoria	225	210	19	225
Randenigala	114	76	39	696
Rantambe	50	50	20	346
Ukuwela	37	40	20	476
Bowatenna	40	38	38	194
Upper Kotmale	150	150	120	1,235
Nilambe	3	3	2	5
Samanalawewa	120	120	41	296
Kukule	75	75	64	689
Inginiyagala	11	7	4	99
Udawalawe	6	3	0	0
Puttalam Coal I	270	0	0	0
Puttalam Coal II	270	270	268	6,465
Puttalam Coal III	270	198	196	4,736
KPS Small GTs	64	0	0	0
KPS GT 7	115	0	0	0
KCCP	161	153	151	3,652
Sapugaskanda A	70	50	50	912
Sapugaskanda B	70	63	59	1,250
Uthura Janani	26	24	23	316
Barge CEB	60	60	61	850
CEB-Hambantota	30	17	18	276
CEB-Mathugama	20	13	13	188
ACE Matara	24	0	0	0
Asia Power	50	0	0	0
KCCPS -2	163	155	140	1,987
West Coast	270	270	290	6,757
Nothern Power	36	0	0	0
ACE Embilipitiya	93	0	0	0
<b>Total</b>	<b>3,483</b>	<b>2,636</b>	<b>2,100</b>	<b>42,082</b>

Plant availability is the availability recorded at 6 am on

July 26, 2023

## 10. Contribution to the Night Peak in MW

July 25, 2023

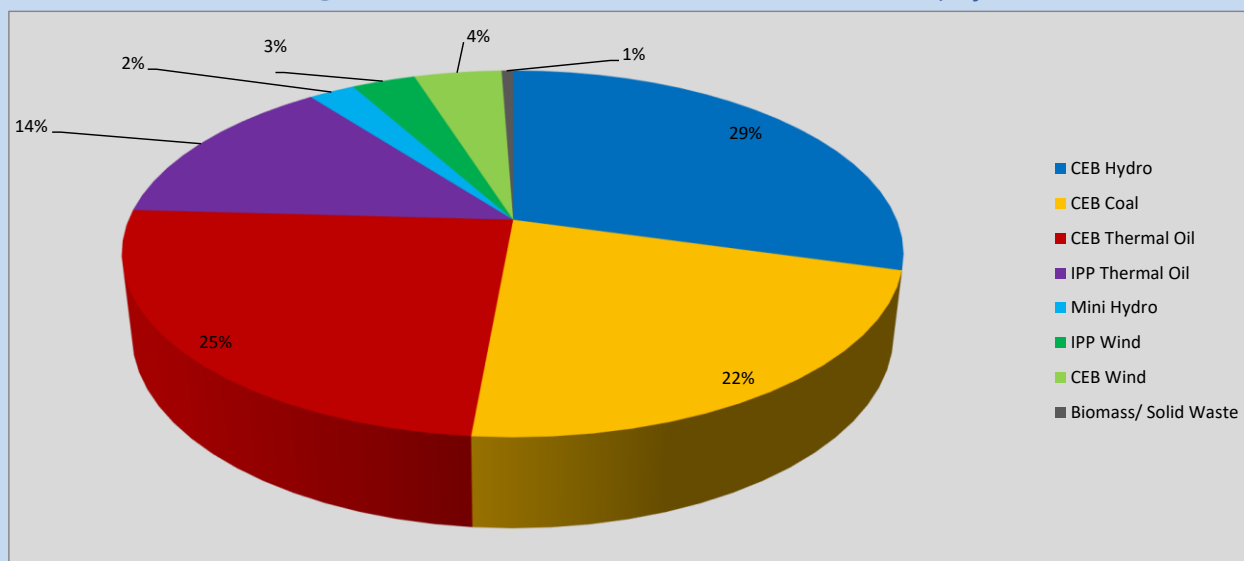


Table 05

CEB Hydro	619 MW
CEB Coal	464 MW
CEB Thermal Oil	515 MW
IPP Thermal Oil	290 MW
Mini Hydro (Telemetered)	48 MW
IPP Wind	66.4 MW
CEB Wind	91.1 MW
Biomass/ Solid Waste	12 MW

### Recorded Peak Demand Data

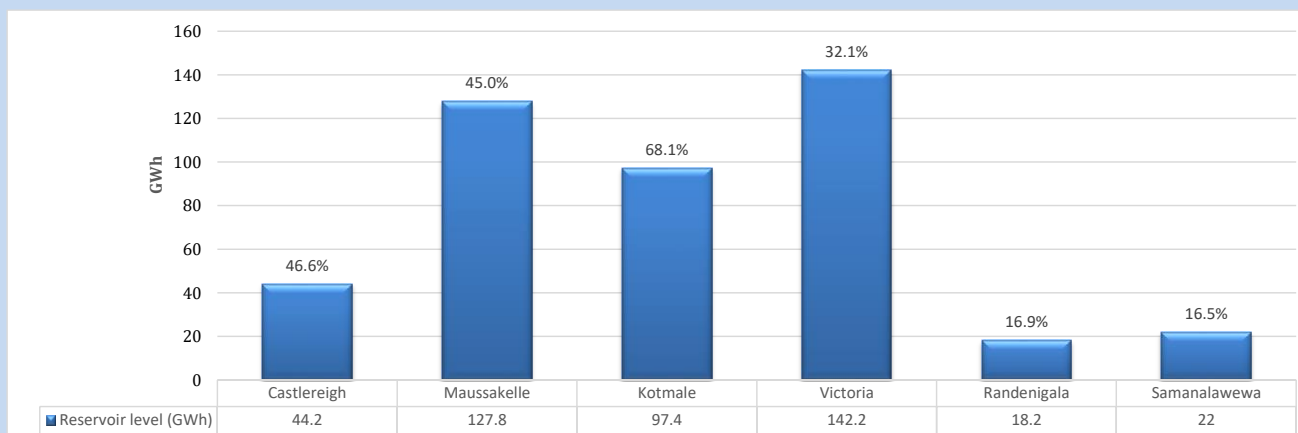
Table 06

Night Peak*	2,105 MW
Day Peak Maximum Demand	1,919 MW
Day Peak Minimum Demand	1,710 MW
Off Peak Minimum Demand	1,297 MW

Above figures are excluding contribution from roof top solar, non telemetered solar and mini hydro plants

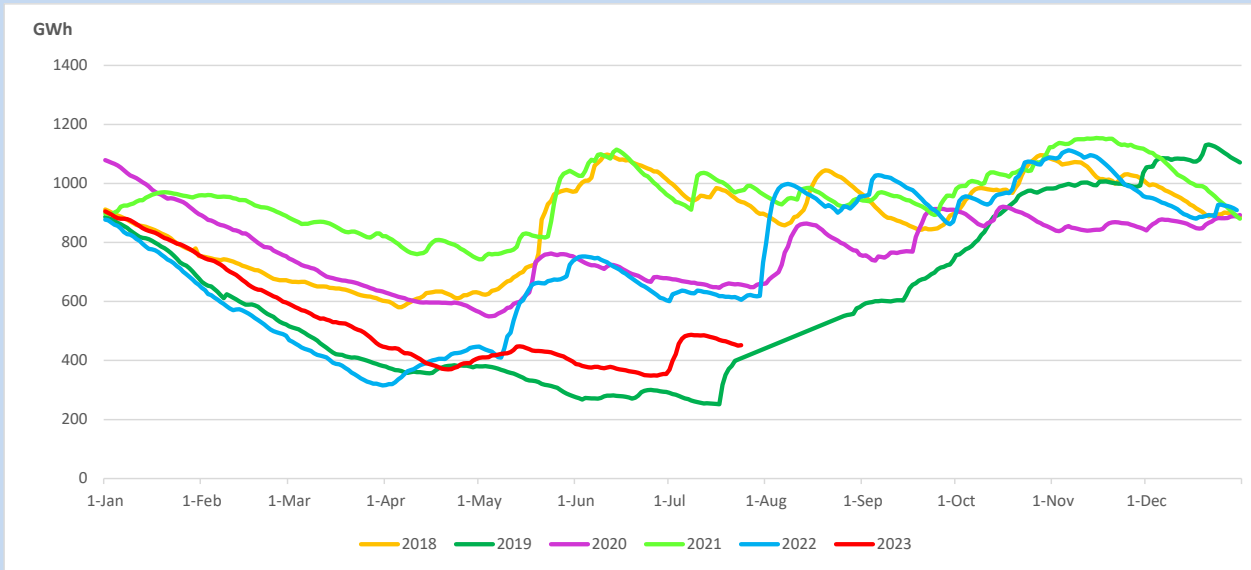
### Reservoir Levels -

as at 06.00 Hr on July 26, 2023

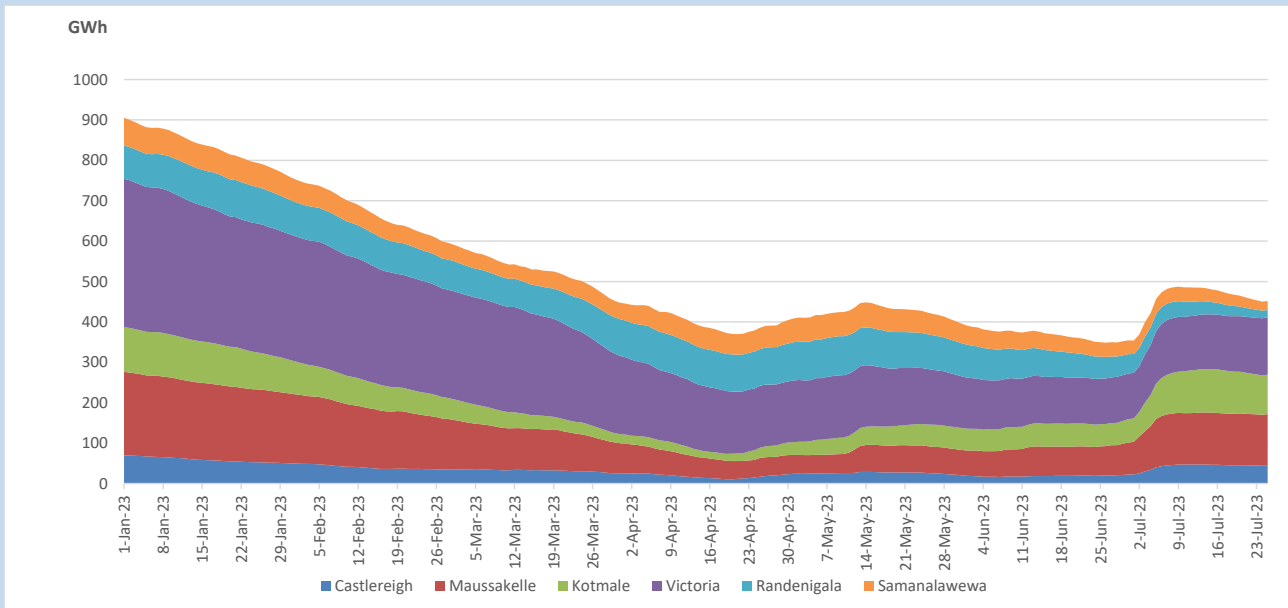


Total Reservoir Level 451.8 GWh  
 % of Total capacity 37.5%

## 11. Comparison of Total Reservoir Storage Levels with Past Years

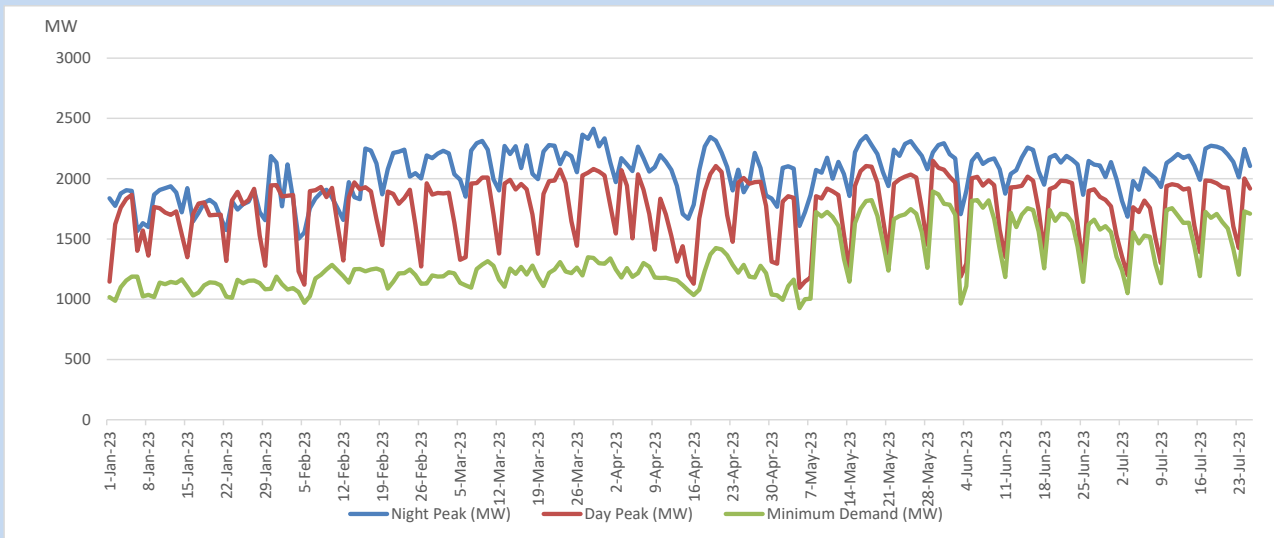


## 12. Variation of Major Hydro Reservoir Levels in the current year (GWh)





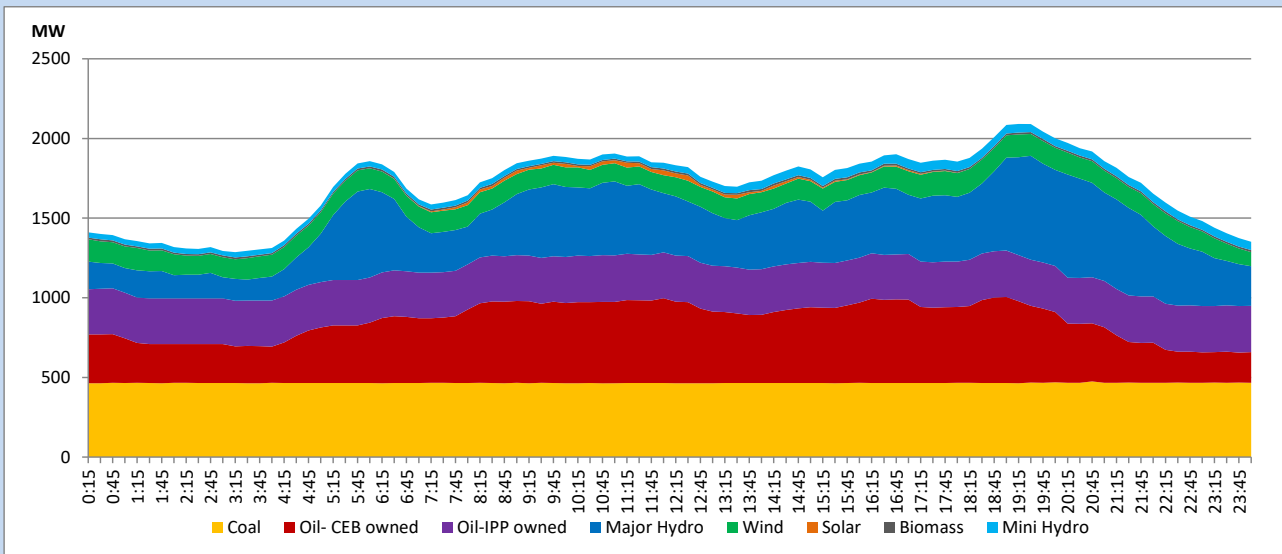
### 13. Variation of Demand during the current year



The above figures are excluding contribution from roof top solar, non telemetered solar and mini hydro plants

### 14. Daily Load Curve

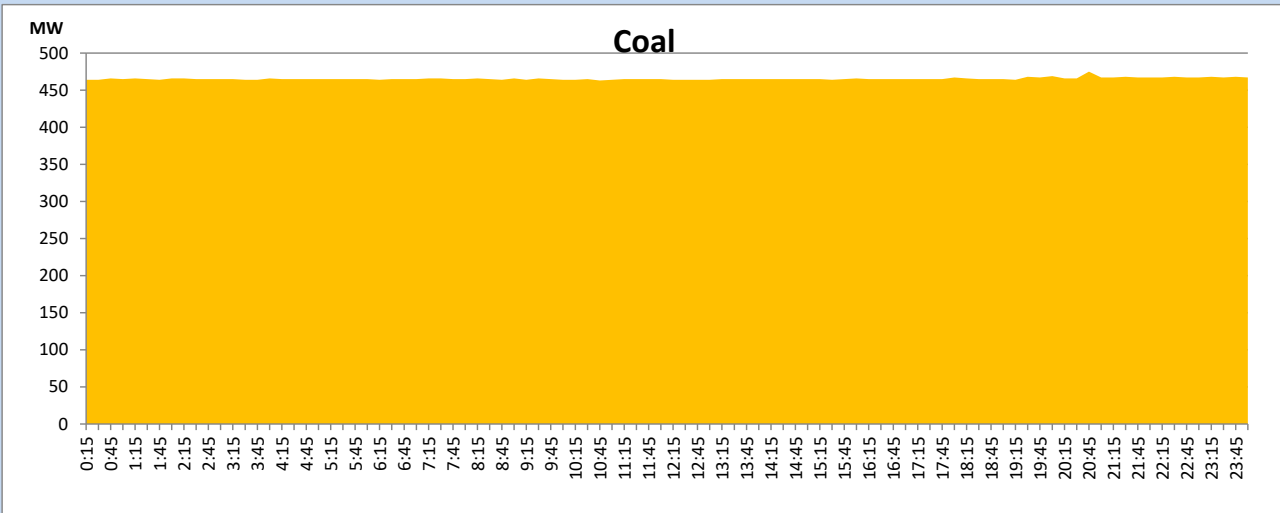
July 25, 2023



Solar and wind data is based on Telemetered Power Stations only

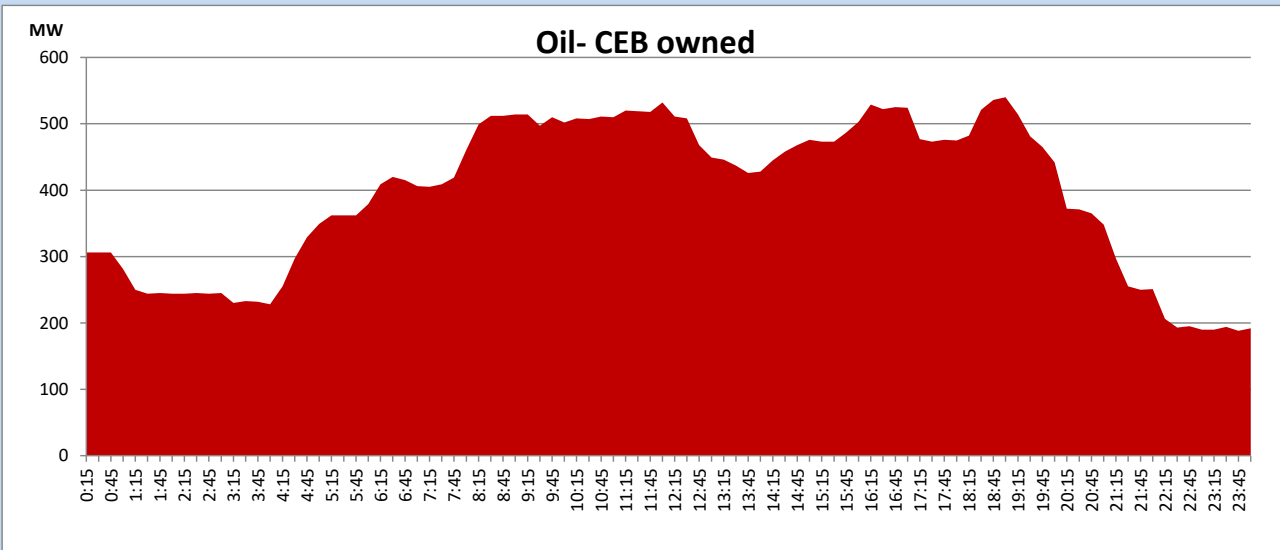
## Coal Generation during

July 25, 2023



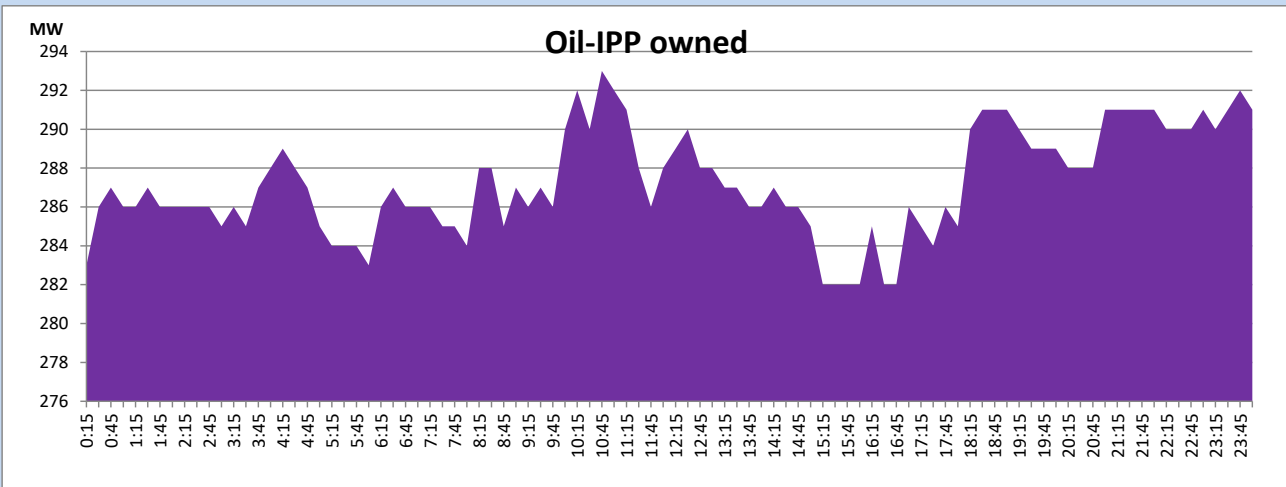
## CEB Oil Plant Generation during

July 25, 2023



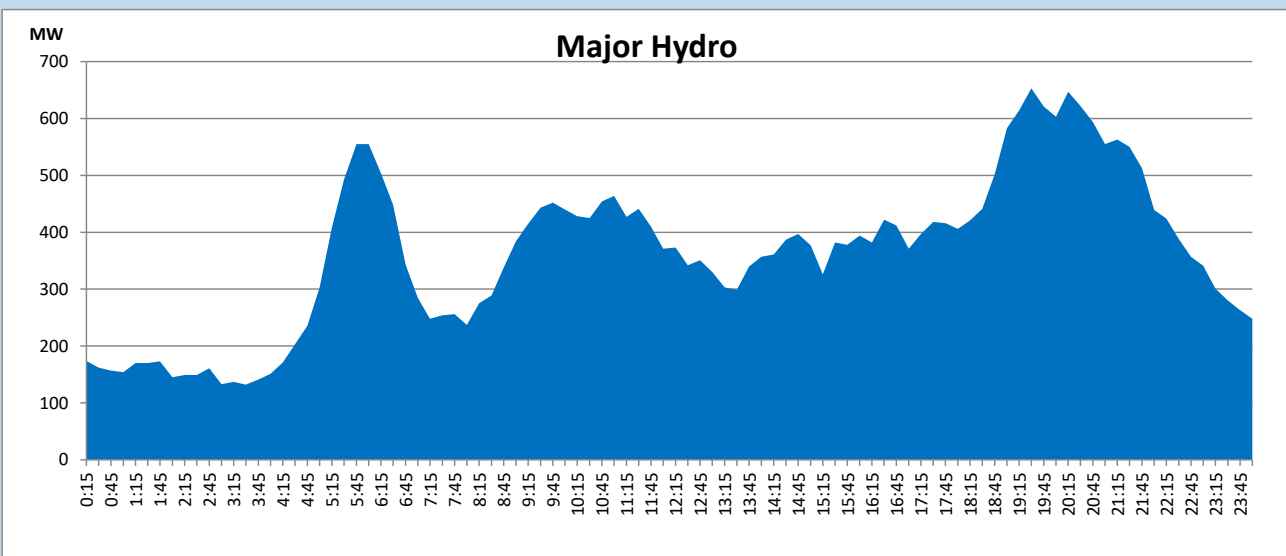
IPP Oil Plant Generation during

July 25, 2023



Major Hydro Generation during

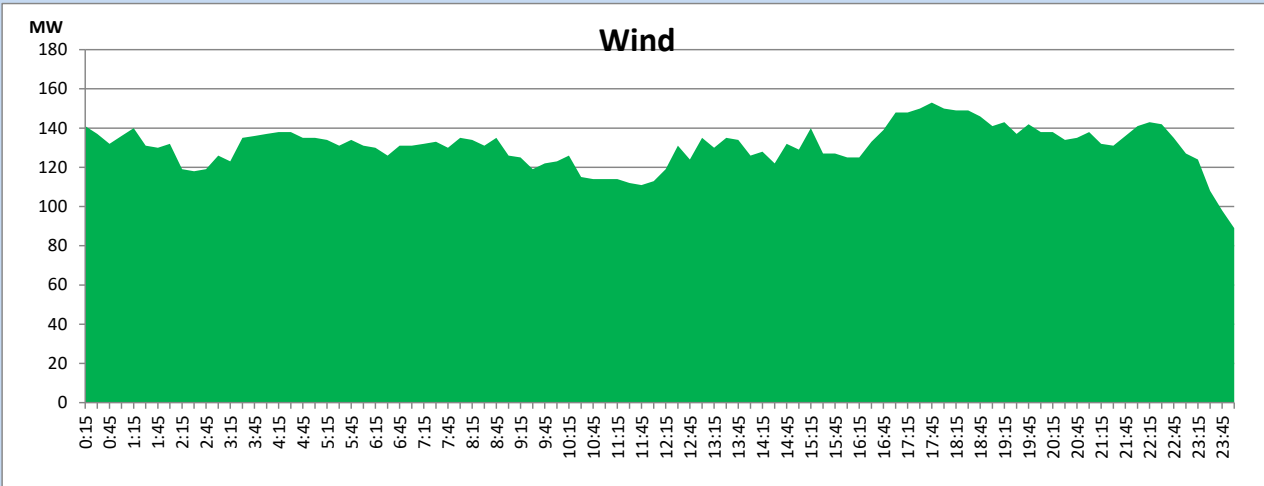
July 25, 2023



## Wind Generation during

July 25, 2023

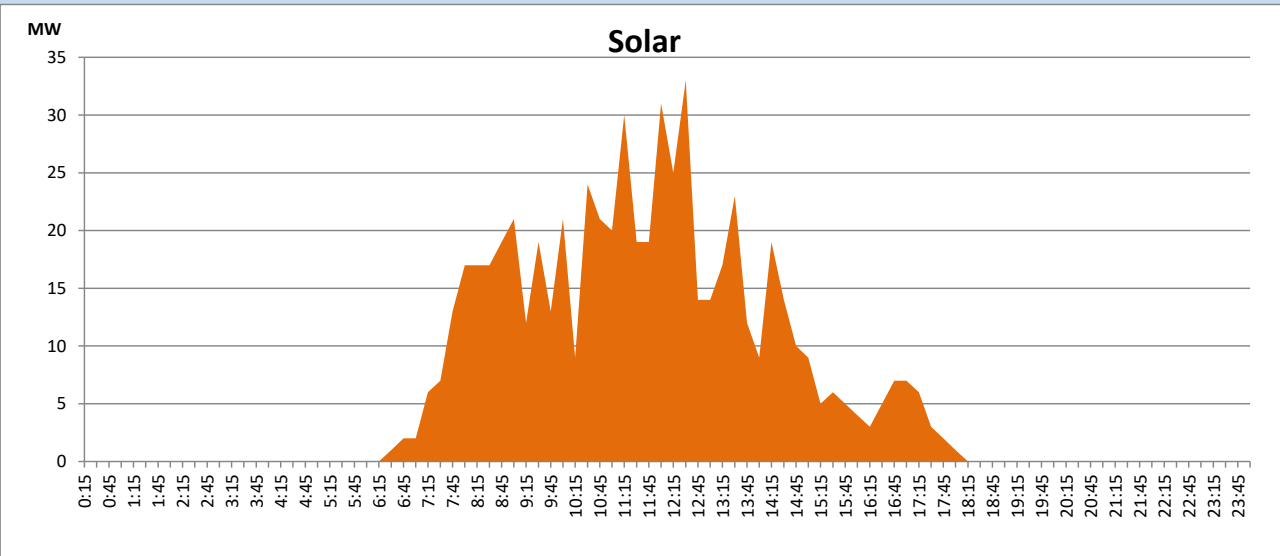
Based on Telemetered Power Stations only



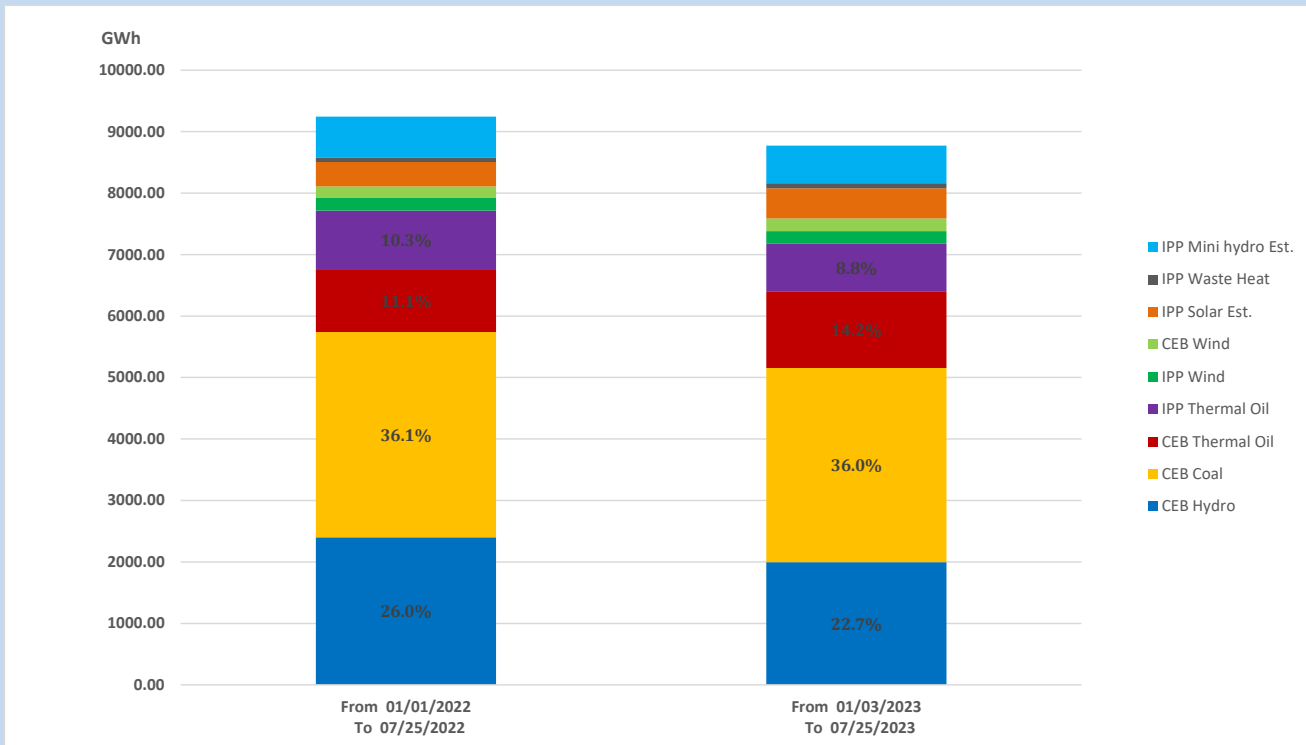
## Solar Generation during

July 25, 2023

Based on Telemetered Power Stations only



## 15. Cumulative Dispatch Comparison with Last Year



### Cumulative dispatch

From 01/01/2022 To 07/25/2022

9246 GWh

From 01/01/2023 To 07/25/2023

8772 GWh

The above figures are including contribution from roof top solar, non telemetered solar and mini hydro plants

**Thermal Plant Fuel types**

<b>Power Station</b>	<b>Primary Fuel</b>
<b>CEB Thermal</b>	
<b>Sapugaskanda 1</b>	Heavy Fuel
<b>Sapugaskanda 2</b>	Heavy Fuel
<b>Kelanitissa Small Gas Turbines</b>	Auto Diesel
<b>GT 7 - Kelanitissa</b>	Auto Diesel
<b>Kelanitissa CCY</b>	Naphtha or Diesel
<b>Lakvijaya 1</b>	Coal
<b>Lakvijaya 2</b>	Coal
<b>Lakvijaya 3</b>	Coal
<b>Uthuru Janani</b>	Heavy Fuel
<b>Barge CEB</b>	Heavy Fuel
<b>KCCPS -2</b>	Auto Diesel

<b>Power Station</b>	<b>Primary Fuel</b>
<b>Private Thermal</b>	
<b>West Coast</b>	Auto Diesel / Heavy Fuel

**Major Incidents reported during the day**

July 25, 2023

1) Kolonnawa 132/33kV T/F 04 tripped along with 33kV feeder 18 at 14:53hrs due to the operation of O/C protection. Kolonnawa 132/33kV T/F 04 and 33kV feeder 18 were normalized at 16:18hrs.