

# Generation and Reservoirs Statistics

July 24, 2023



PUBLIC UTILITIES COMMISSION OF SRI LANKA

## 1. Daily Generation Mix in MWh

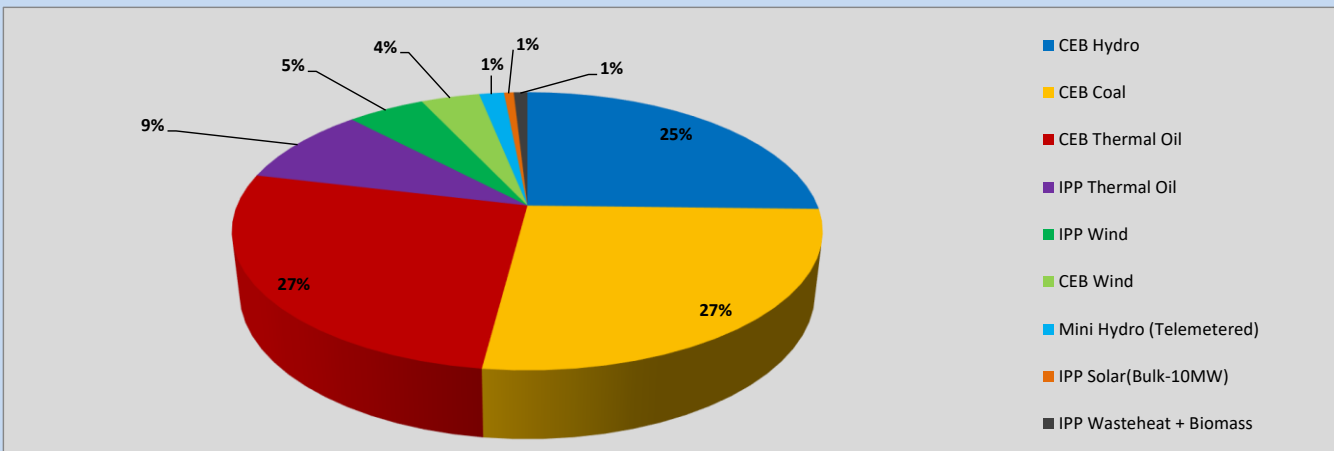


Table 01

CEB Hydro	10,664	MWh
CEB Coal	11,191	MWh
CEB Thermal Oil	11,212	MWh
IPP Thermal Oil	3,862	MWh
IPP Wind	2,125	MWh
CEB Wind	1,612	MWh
Mini Hydro (Telemetered)	681	MWh
IPP Solar (Bulk)	268	MWh
IPP Wasteheat + Biomass	376	MWh
<b>Total Generation (Excluding estimated figures)</b>	<b>41,991</b>	<b>MWh</b>
* Estimated unserved energy	0	MWh
* Estimated Mini Hydro (Non telemetered)	2829	MWh
* Estimated IPP Solar PV (Bulk 1-10MW)	304	MWh
* Estimated Solar Roof Top PV	1650	MWh
<b>Total Generation (Including estimated figures)</b>	<b>46,774</b>	<b>MWh</b>

\* Estimated figures of CEB generation report

## 2. Cumulative Dispatch

Following data excludes the contribution from roof top solar, non telemetered solar and mini hydro plants

Table 02 - Current Month

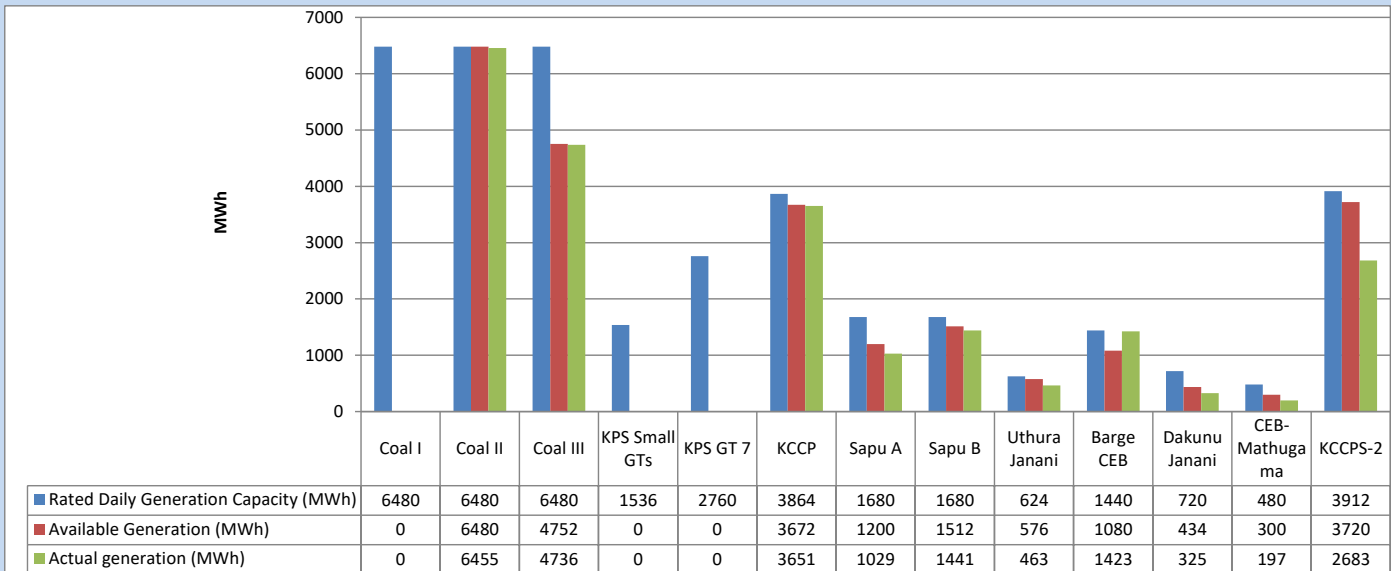
Category	Dispatch (GWh)	
CEB Hydro	253	27.18%
CEB Coal	271	29.17%
CEB Thermal Oil	159	17.08%
IPP Thermal	110	11.81%
SPP Wind	47	5.10%
CEB Wind	42	4.48%
Mini Hydro (Telemetered)	31	3.31%
IPP Solar (Bulk-10MW)	8	0.83%
IPP Wasteheat + BMP	10	1.04%
<b>Total</b>	<b>929</b>	

Table 03 - Current Year

Category	Dispatch (GWh)	
CEB Hydro	1,991	25.25%
CEB Coal	3,154	40.02%
CEB Thermal Oil	1,242	15.76%
IPP Thermal	764	9.69%
SPP Wind	199	2.52%
CEB Wind	206	2.61%
Mini Hydro (Telemetered)	197	2.49%
IPP Solar (Bulk-10MW)	61	0.77%
IPP Wasteheat	70	0.88%
<b>Total</b>	<b>7,882</b>	

### 3. CEB owned Thermal Plant Dispatch

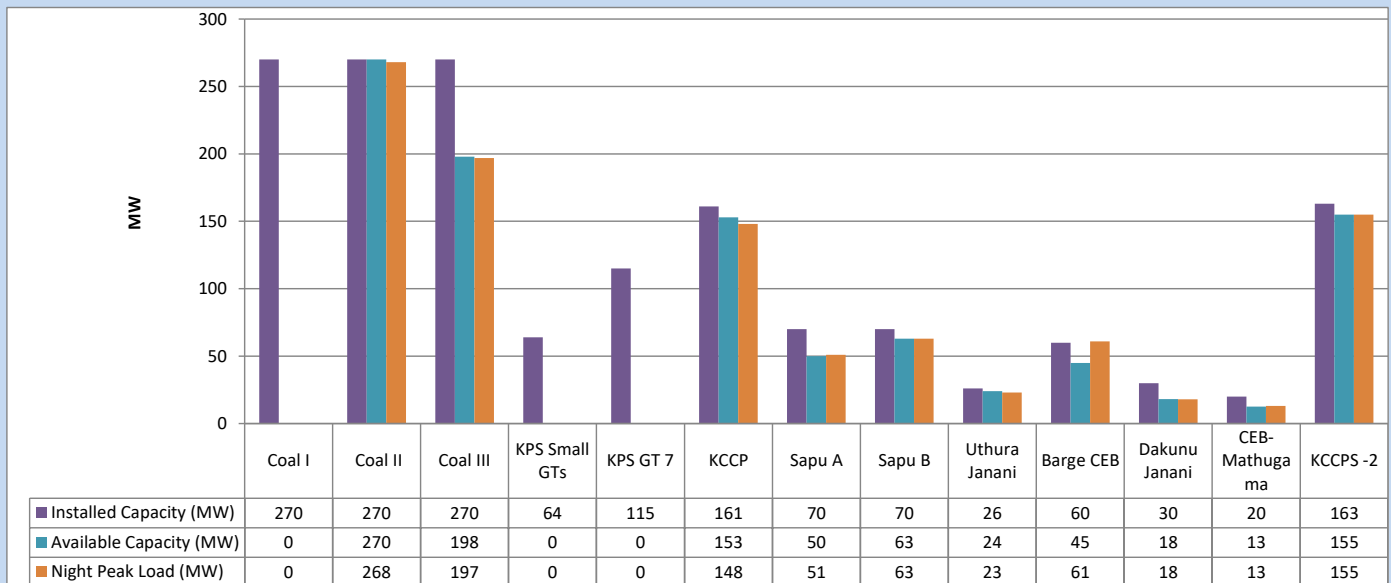
July 24, 2023



Available Generation is estimated based on plant availability at 6.00am on

July 25, 2023

### 4. CEB owned Thermal Plant Loading at the Night Peak

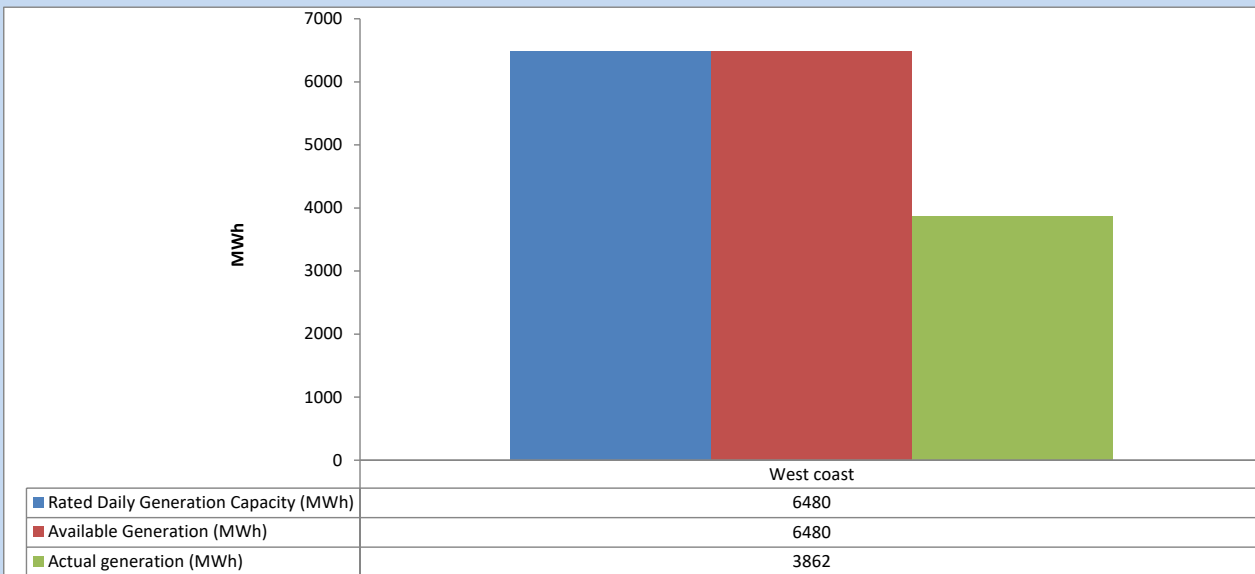


Plant availability is recorded at 6.00 am on

July 25, 2023

## 5. IPP owned Thermal Plant Dispatch

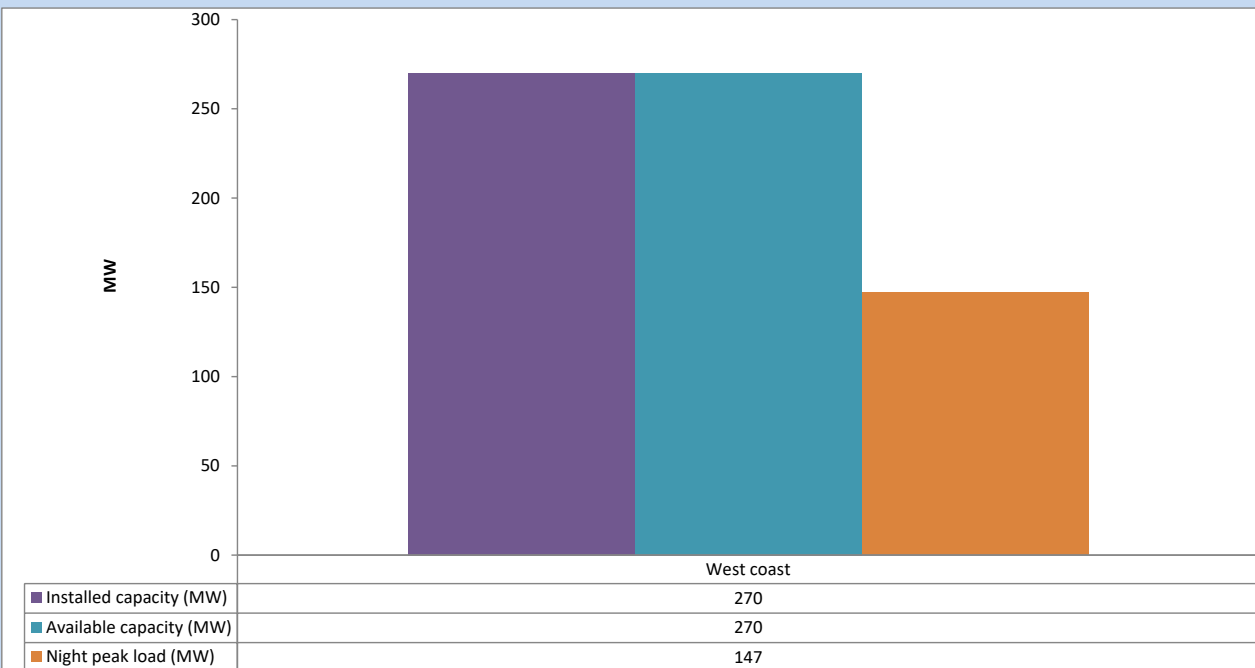
July 24, 2023



Available Generation is estimated based on plant availability at 6.00am on

July 25, 2023

## 6. IPP owned Thermal Plant Loading at the Night Peak

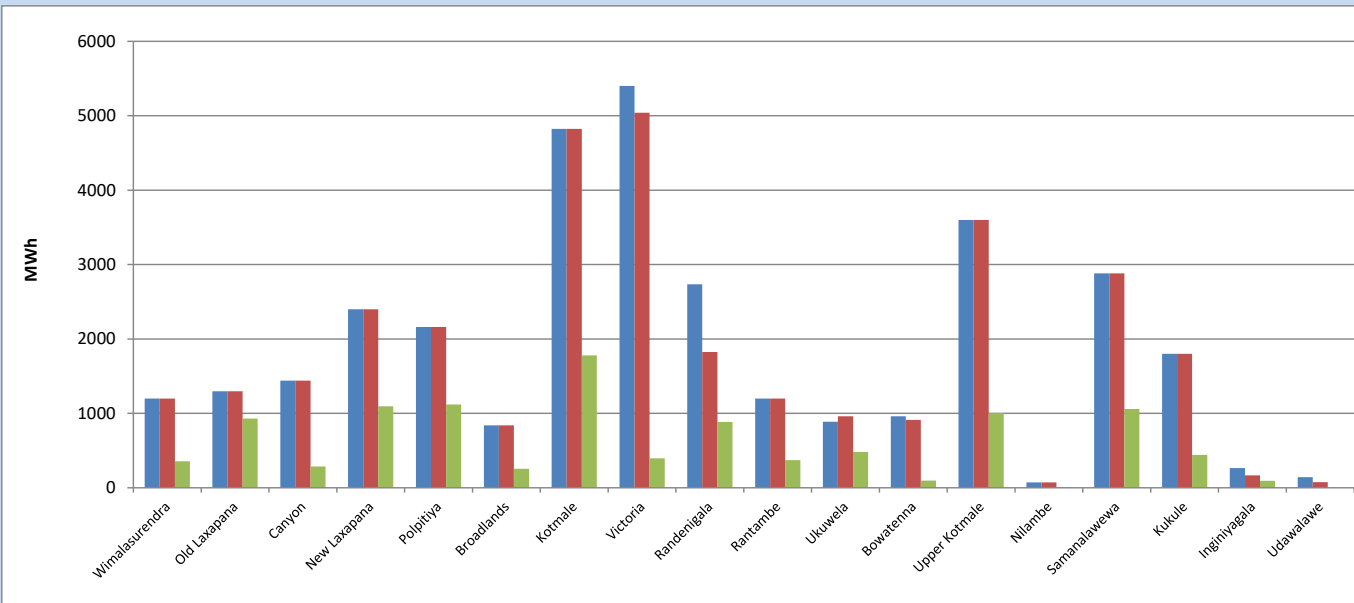


Plant availability is recorded at 6.00 am on

July 25, 2023

## 7. Major Hydro Plant Dispatch

July 24, 2023

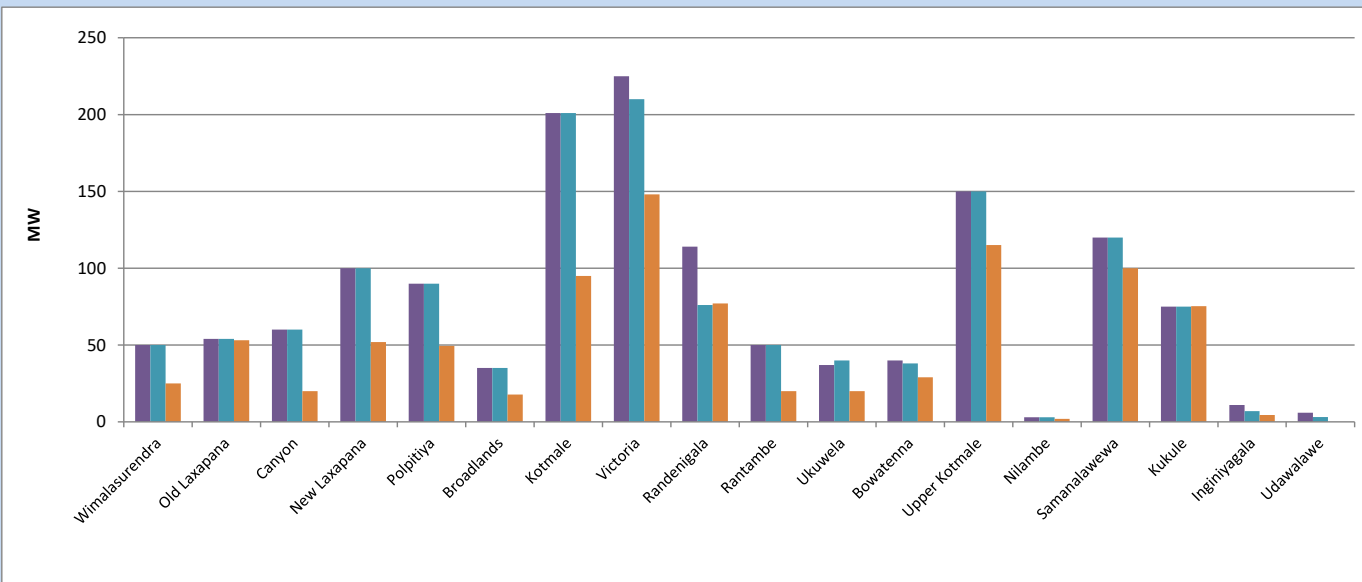


Available Generation is estimated based on plant availability at 6.00am on  
Broadlands power plant is operating in the Commissioning Stage

July 25, 2023

## 8. Major Hydro Plant Loading at Night Peak

July 24, 2023



Plant availability is recorded at 6.00 am on  
Broadlands power plant is operating in the Commissioning Stage

July 25, 2023

## 9. Summary of Major Plant performance

Table 04

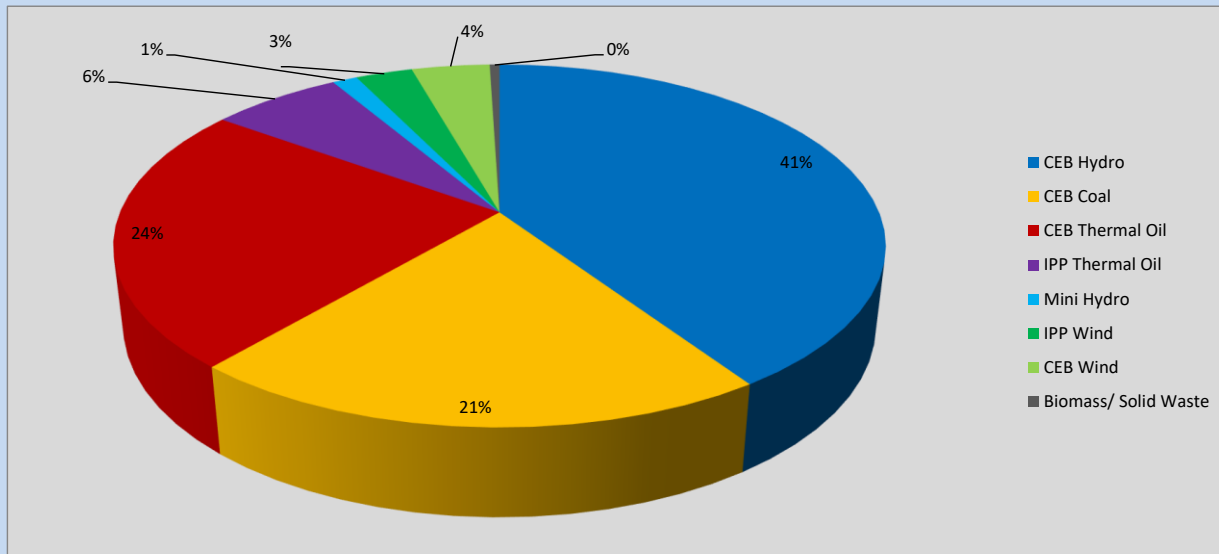
Plant	Installed Capacity	Plant Availability	Night peak Load	Plant Dispatch
	(MW)	(MW)	(MW)	(MWh)
Wimalasurendra	50	50	25	357
Old Laxapana	54	54	53	930
Canyon	60	60	20	286
New Laxapana	100	100	52	1,094
Polpitiya	90	90	49	1,120
Broadlands	35	35	18	257
Kotmale	201	201	95	1,780
Victoria	225	210	148	396
Randenigala	114	76	77	885
Rantambe	50	50	20	371
Ukuwela	37	40	20	483
Bowatenna	40	38	29	97
Upper Kotmale	150	150	115	1,005
Nilambe	3	3	2	8
Samanalawewa	120	120	100	1,059
Kukule	75	75	75	441
Inginiyagala	11	7	4	95
Udawalawe	6	3	0	0
Puttalam Coal I	270	0	0	0
Puttalam Coal II	270	270	268	6,455
Puttalam Coal III	270	198	197	4,736
KPS Small GTs	64	0	0	0
KPS GT 7	115	0	0	0
KCCP	161	153	148	3,651
Sapugaskanda A	70	50	51	1,029
Sapugaskanda B	70	63	63	1,441
Uthura Janani	26	24	23	463
Barge CEB	60	45	61	1,423
CEB-Hambantota	30	18	18	325
CEB-Mathugama	20	13	13	197
ACE Matara	24	0	0	0
Asia Power	50	0	0	0
KCCPS -2	163	155	155	2,683
West Coast	270	270	147	3,862
Nothern Power	36	0	0	0
ACE Embilipitiya	93	0	0	0
<b>Total</b>	<b>3,483</b>	<b>2,621</b>	<b>2,238</b>	<b>41,991</b>

Plant availability is the availability recorded at 6 am on

July 25, 2023

## 10. Contribution to the Night Peak in MW

July 24, 2023



**Table 05**

CEB Hydro	912	MW
CEB Coal	465	MW
CEB Thermal Oil	532	MW
IPP Thermal Oil	147	MW
Mini Hydro (Telemetered)	28	MW
IPP Wind	64	MW
CEB Wind	87.9	MW
Biomass/ Solid Waste	11	MW

### Recorded Peak Demand Data

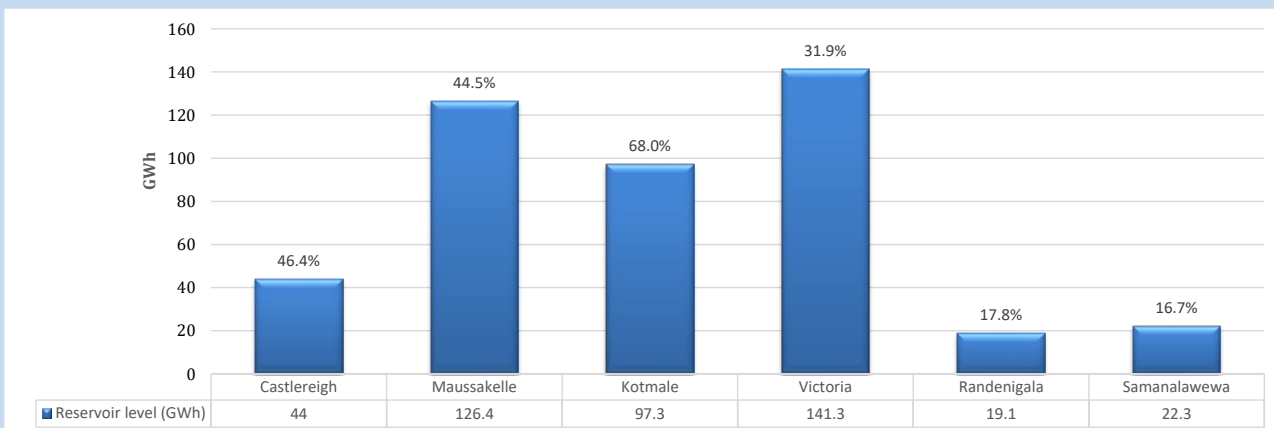
**Table 06**

Night Peak*	2,247	MW
Day Peak Maximum Demand	2,002	MW
Day Peak Minimum Demand	1,729	MW
Off Peak Minimum Demand	1,207	MW

Above figures are excluding contribution from roof top solar, non telemetered solar and mini hydro plants

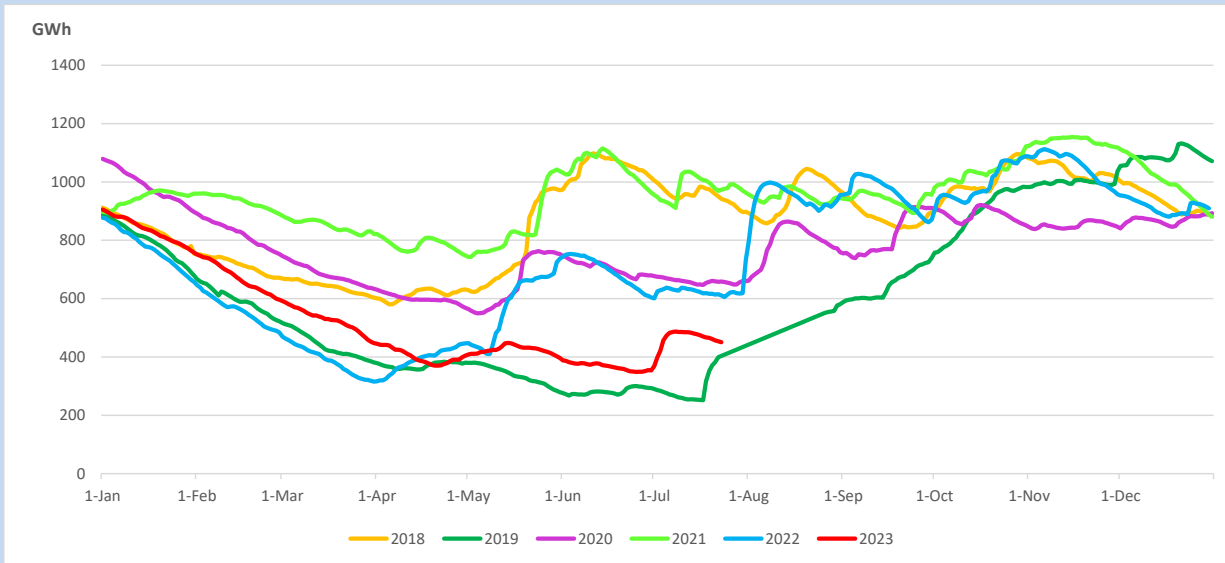
### Reservoir Levels -

as at 06.00 Hr on July 25, 2023

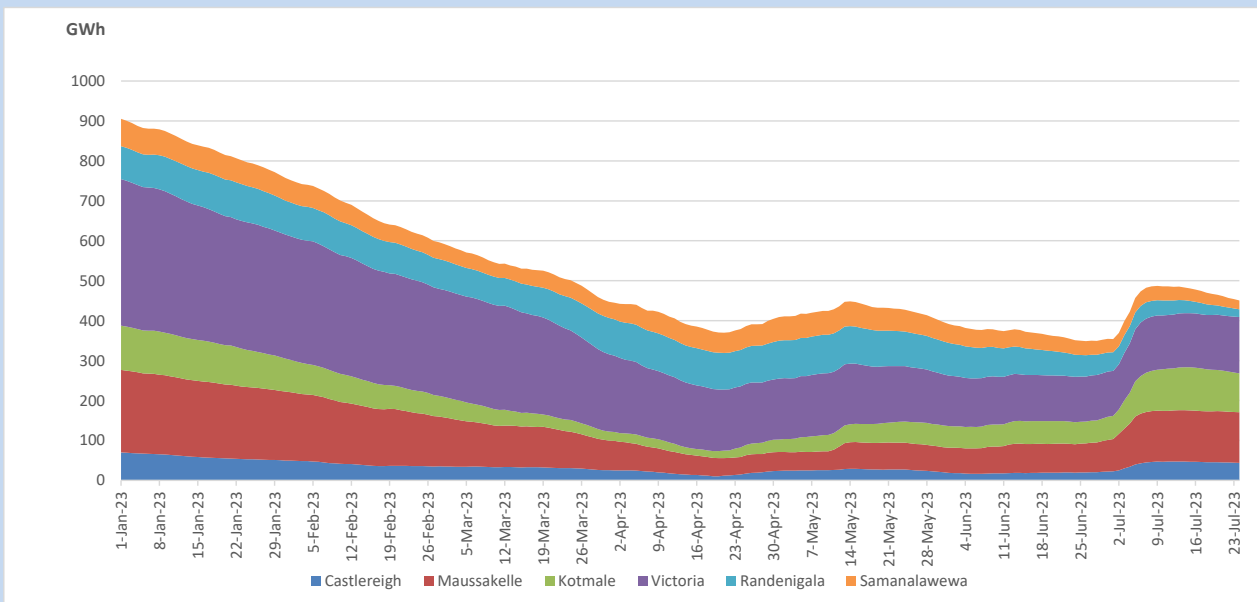


Total Reservoir Level 450.4 GWh  
% of Total capacity 37.4%

## 11. Comparison of Total Reservoir Storage Levels with Past Years

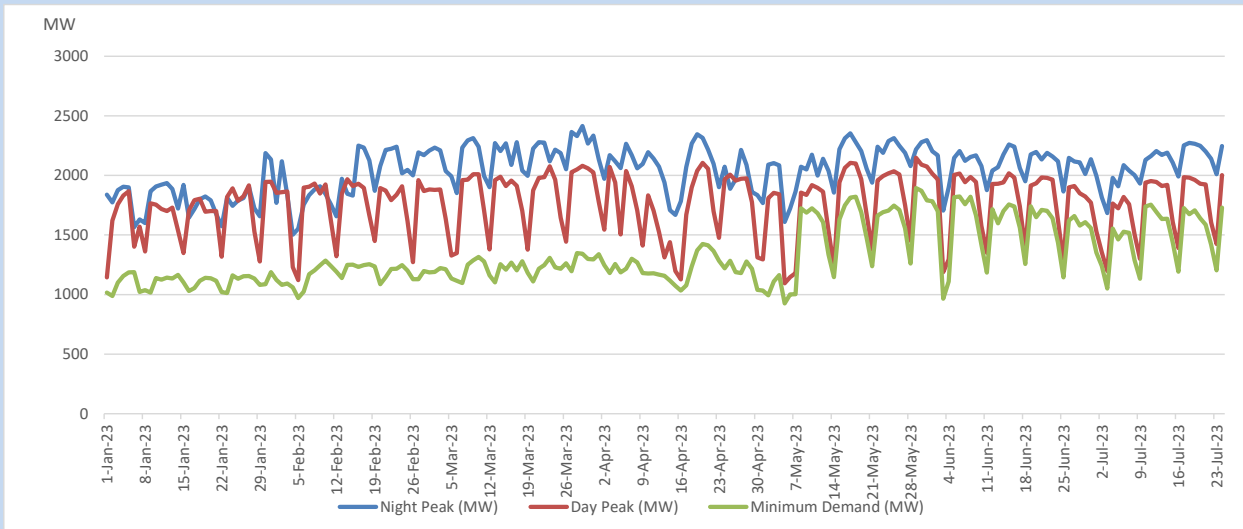


## 12. Variation of Major Hydro Reservoir Levels in the current year (GWh)





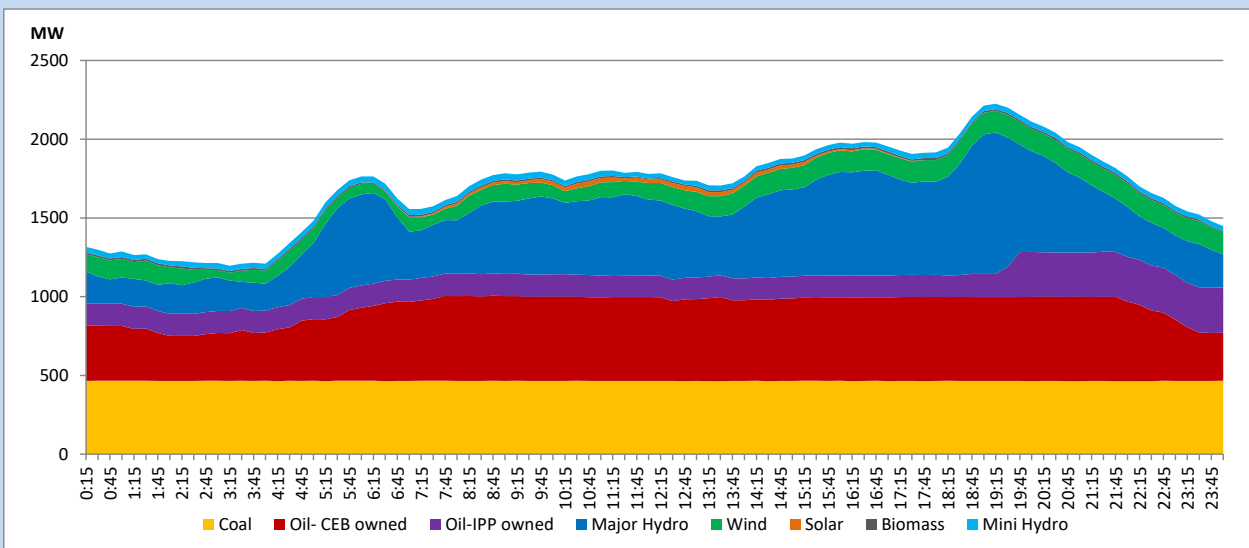
### 13. Variation of Demand during the current year



The above figures are excluding contribution from roof top solar, non telemetered solar and mini hydro plants

### 14. Daily Load Curve

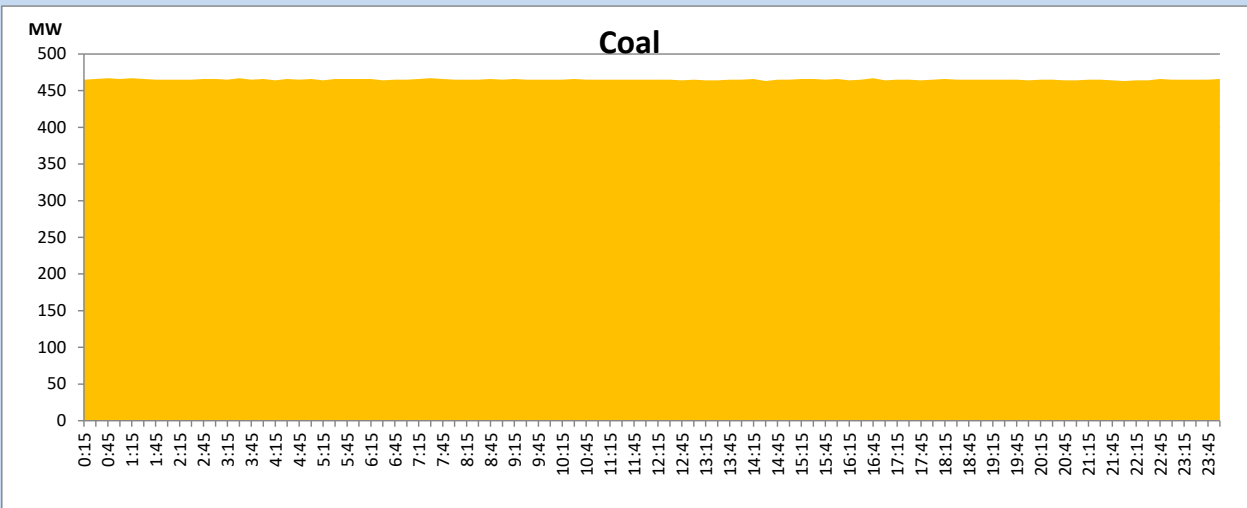
July 24, 2023



Solar and wind data is based on Telemetered Power Stations only

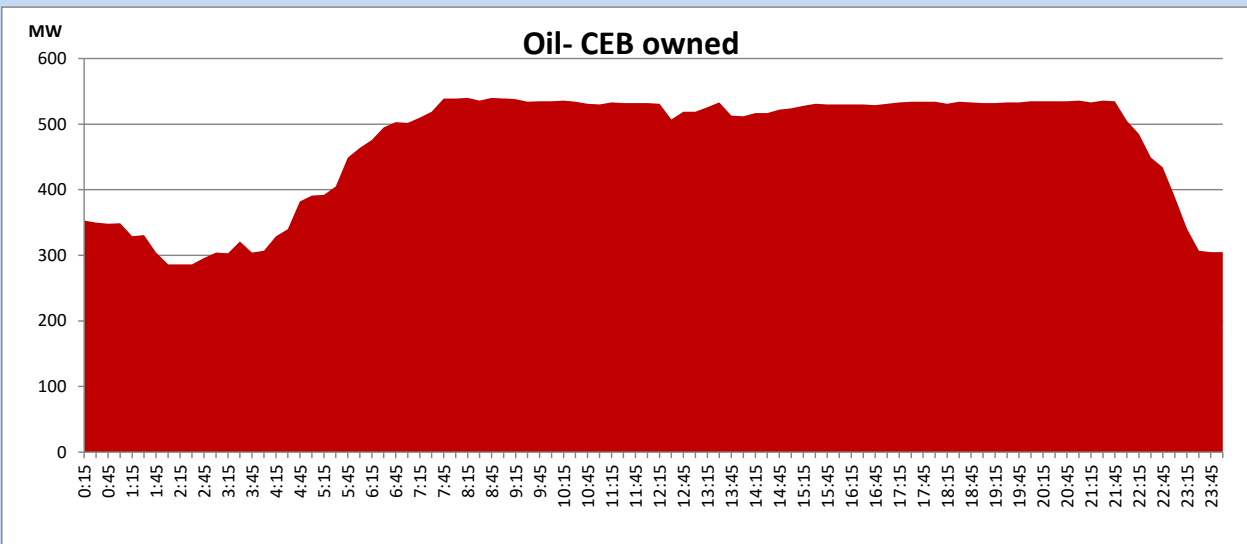
## Coal Generation during

July 24, 2023



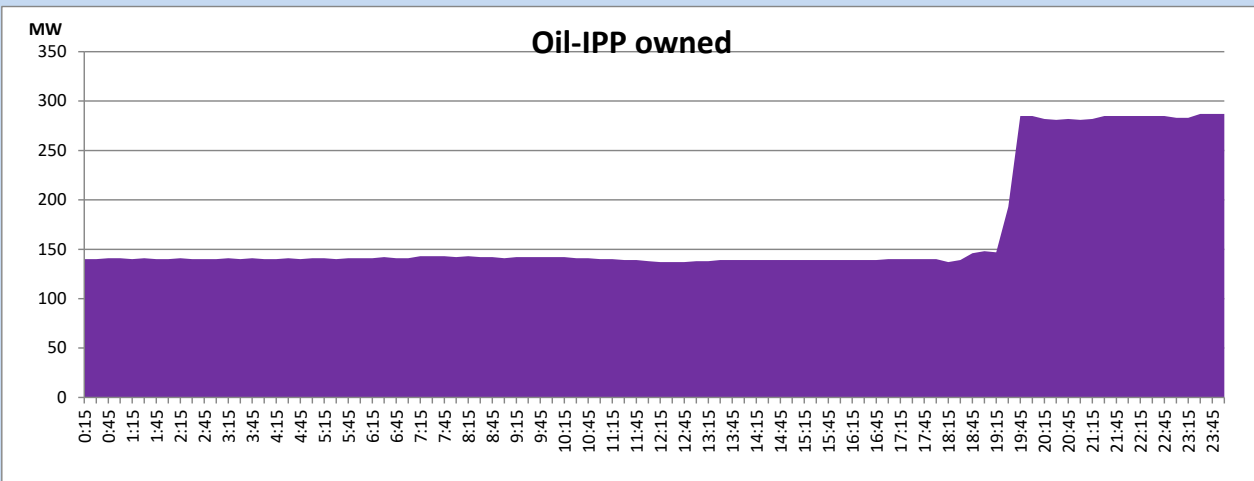
## CEB Oil Plant Generation during

July 24, 2023



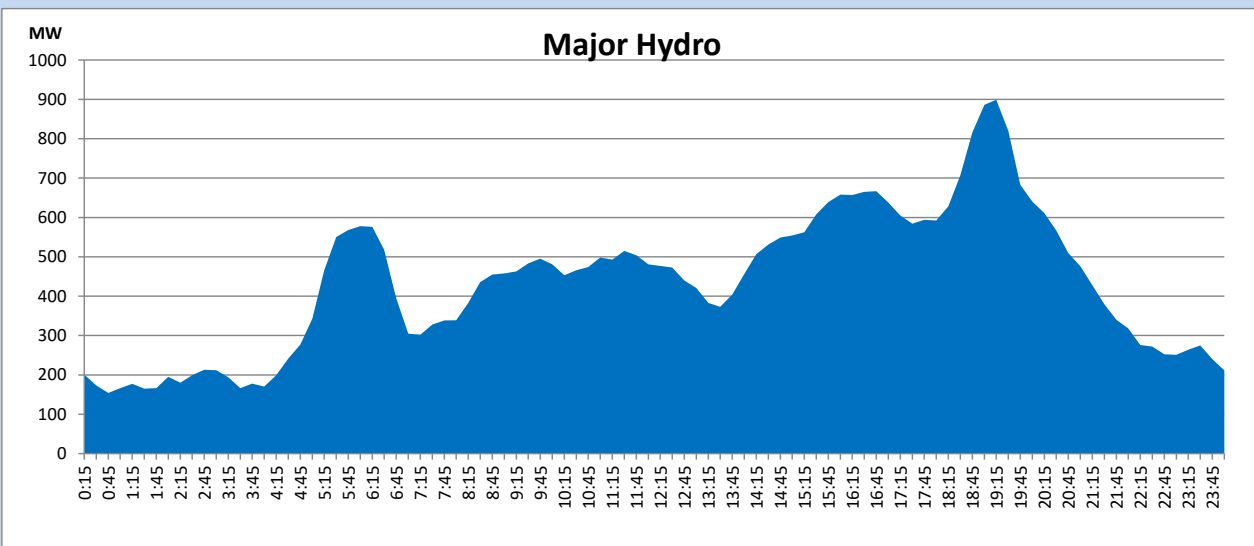
### IPP Oil Plant Generation during

July 24, 2023



### Major Hydro Generation during

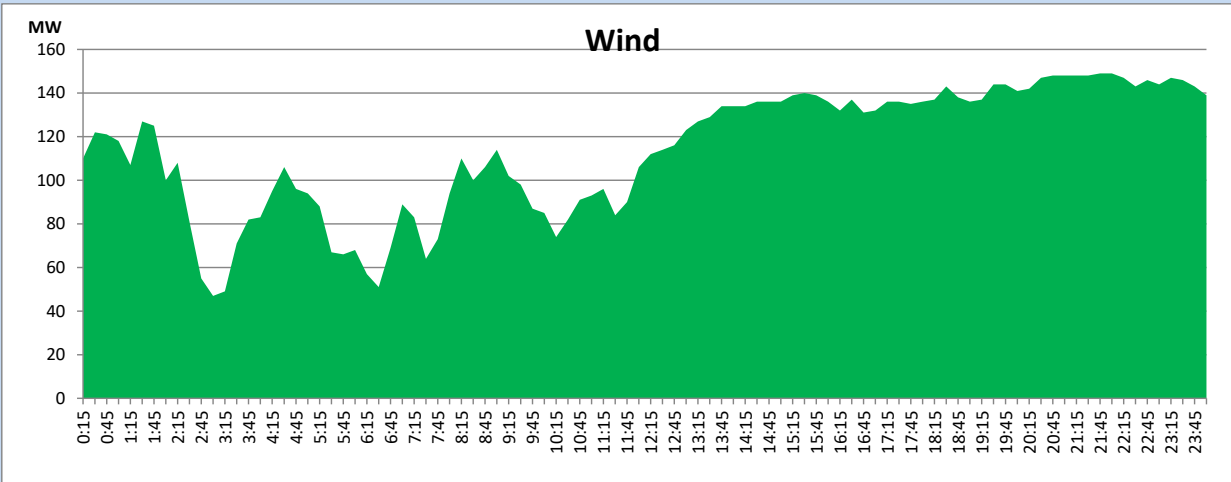
July 24, 2023



## Wind Generation during

July 24, 2023

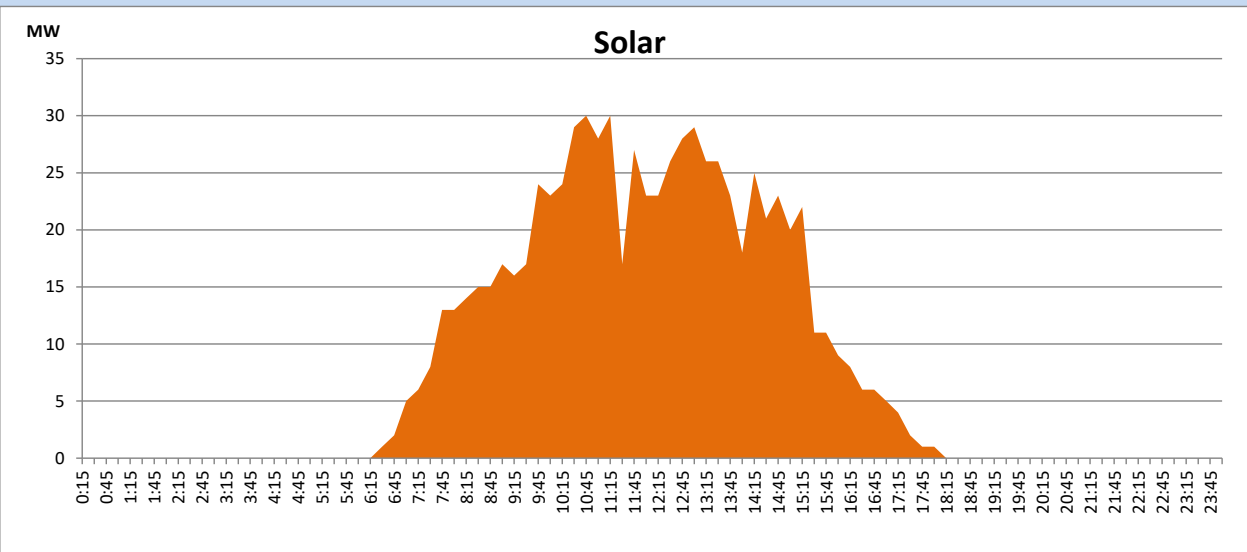
Based on Telemetered Power Stations only



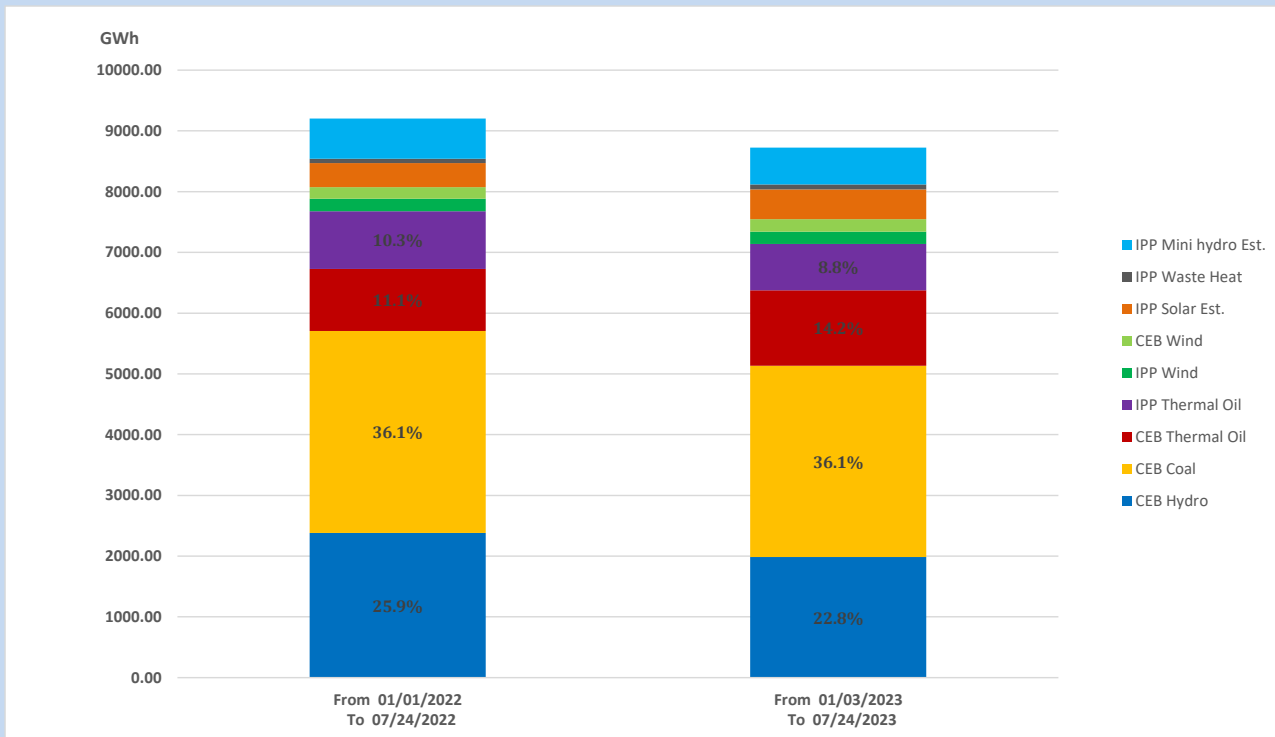
## Solar Generation during

July 24, 2023

Based on Telemetered Power Stations only



## 15. Cumulative Dispatch Comparison with Last Year



### Cumulative dispatch

From 01/01/2022 To 07/24/2022

9203 GWh

From 01/01/2023 To 07/24/2023

8725 GWh

The above figures are including contribution from roof top solar, non telemetered solar and mini hydro plants

**Thermal Plant Fuel types**

Power Station	Primary Fuel
<b>CEB Thermal</b>	
<b>Sapugaskanda 1</b>	Heavy Fuel
<b>Sapugaskanda 2</b>	Heavy Fuel
<b>Kelanitissa Small Gas Turbines</b>	Auto Diesel
<b>GT 7 - Kelanitissa</b>	Auto Diesel
<b>Kelanitissa CCY</b>	Naphtha or Diesel
<b>Lakvijaya 1</b>	Coal
<b>Lakvijaya 2</b>	Coal
<b>Lakvijaya 3</b>	Coal
<b>Uthuru Janani</b>	Heavy Fuel
<b>Barge CEB</b>	Heavy Fuel
<b>KCCPS -2</b>	Auto Diesel

Power Station	Primary Fuel
<b>Private Thermal</b>	
<b>West Coast</b>	Auto Diesel / Heavy Fuel

**Major Incidents reported during the day**

July 24, 2023

1) Hambanthota GSS 132/33kV T/F 03 tripped from both ends at 12:25hrs due to the operation of differential protection. At the same time, Hambanthota DPP (Dakunu Janani) tripped rejecting 19MW from the system. Hambanthota GSS 132/33kV T/F 03 was normalized at 13:35hrs and Hambanthota DPP resumed generation at 12:31hrs.

2) WCP availability limited to 130MW from 00:00hrs to 19:00hrs due to a GT washing work. WCP second GT synchronized at 18:38hrs and reached BL2 (270MW) at 19:36hrs.