

Generation and Reservoirs Statistics

July 23, 2023



PUBLIC UTILITIES COMMISSION OF SRI LANKA

1. Daily Generation Mix in MWh

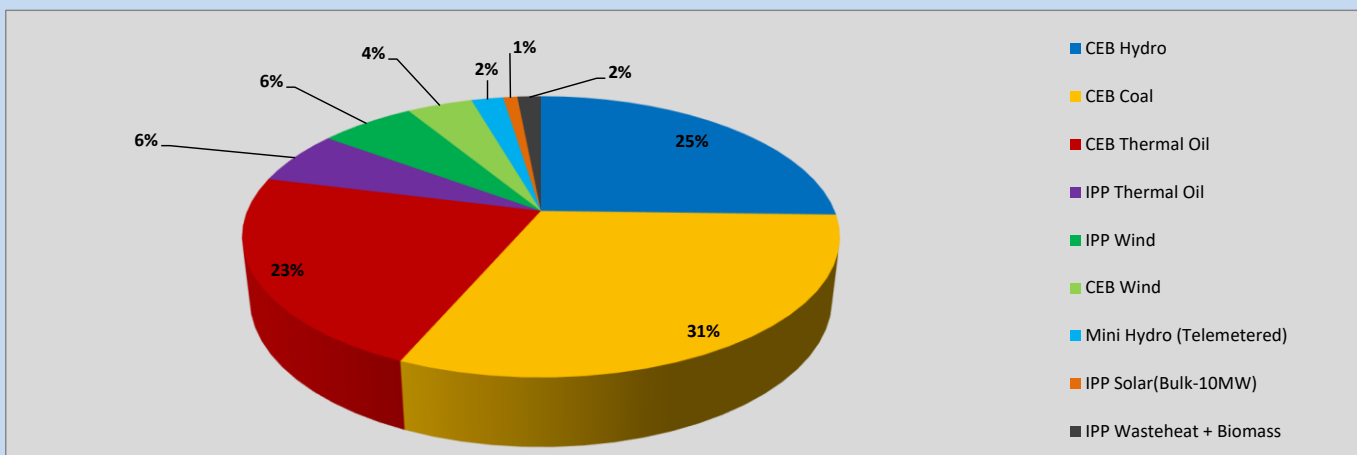


Table 01

CEB Hydro	9,095	MWh
CEB Coal	11,112	MWh
CEB Thermal Oil	8,023	MWh
IPP Thermal Oil	2,207	MWh
IPP Wind	2,204	MWh
CEB Wind	1,518	MWh
Mini Hydro (Telemetered)	738	MWh
IPP Solar (Bulk)	328	MWh
IPP Wasteheat + Biomass	544	MWh
Total Generation (Excluding estimated figures)	35,769	MWh
* Estimated unserved energy	0	MWh
* Estimated Mini Hydro (Non telemetered)	2772	MWh
* Estimated IPP Solar PV (Bulk 1-10MW)	304	MWh
* Estimated Solar Roof Top PV	1650	MWh
Total Generation (Including estimated figures)	40,495	MWh

* Estimated figures of CEB generation report

2. Cumulative Dispatch

Following data excludes the contribution from roof top solar, non telemetered solar and mini hydro plants

Table 02 - Current Month

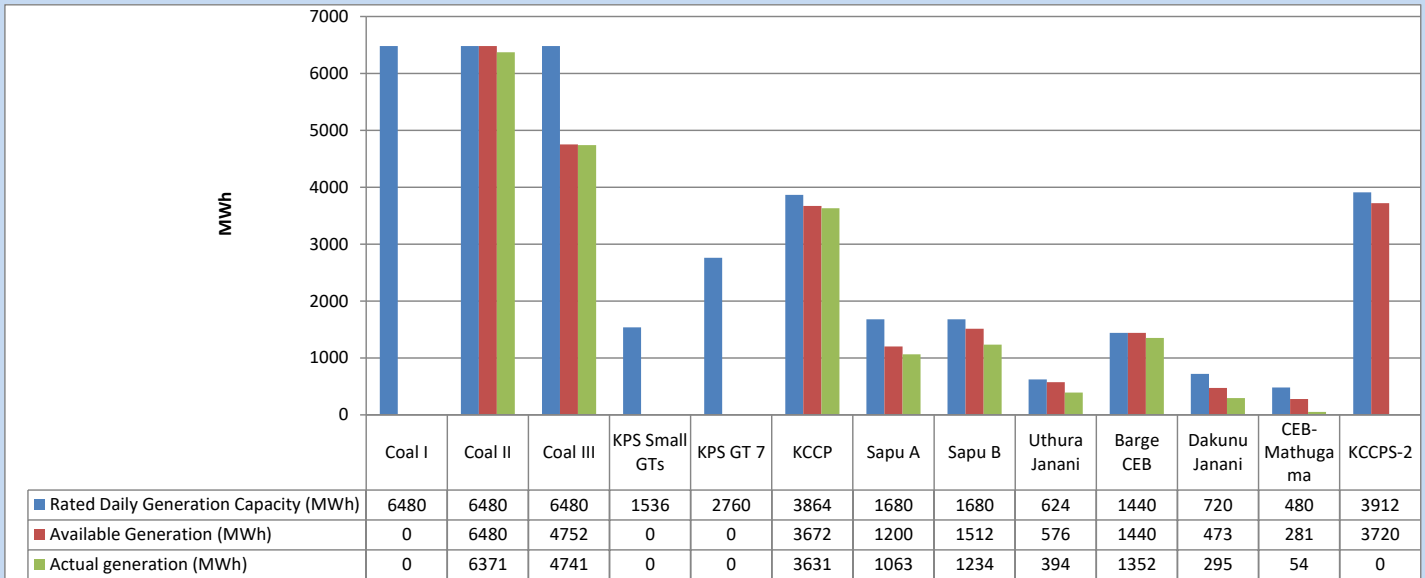
Category	Dispatch (GWh)	
CEB Hydro	242	27.26%
CEB Coal	260	29.29%
CEB Thermal Oil	147	16.62%
IPP Thermal	106	11.94%
SPP Wind	45	5.10%
CEB Wind	40	4.51%
Mini Hydro (Telemetered)	30	3.39%
IPP Solar (Bulk-10MW)	7	0.84%
IPP Wasteheat + BMP	9	1.05%
Total	887	

Table 03 - Current Year

Category	Dispatch (GWh)	
CEB Hydro	1,980	25.25%
CEB Coal	3,143	40.09%
CEB Thermal Oil	1,231	15.70%
IPP Thermal	760	9.69%
SPP Wind	197	2.51%
CEB Wind	204	2.60%
Mini Hydro (Telemetered)	196	2.50%
IPP Solar (Bulk-10MW)	60	0.77%
IPP Wasteheat	69	0.88%
Total	7,840	

3. CEB owned Thermal Plant Dispatch

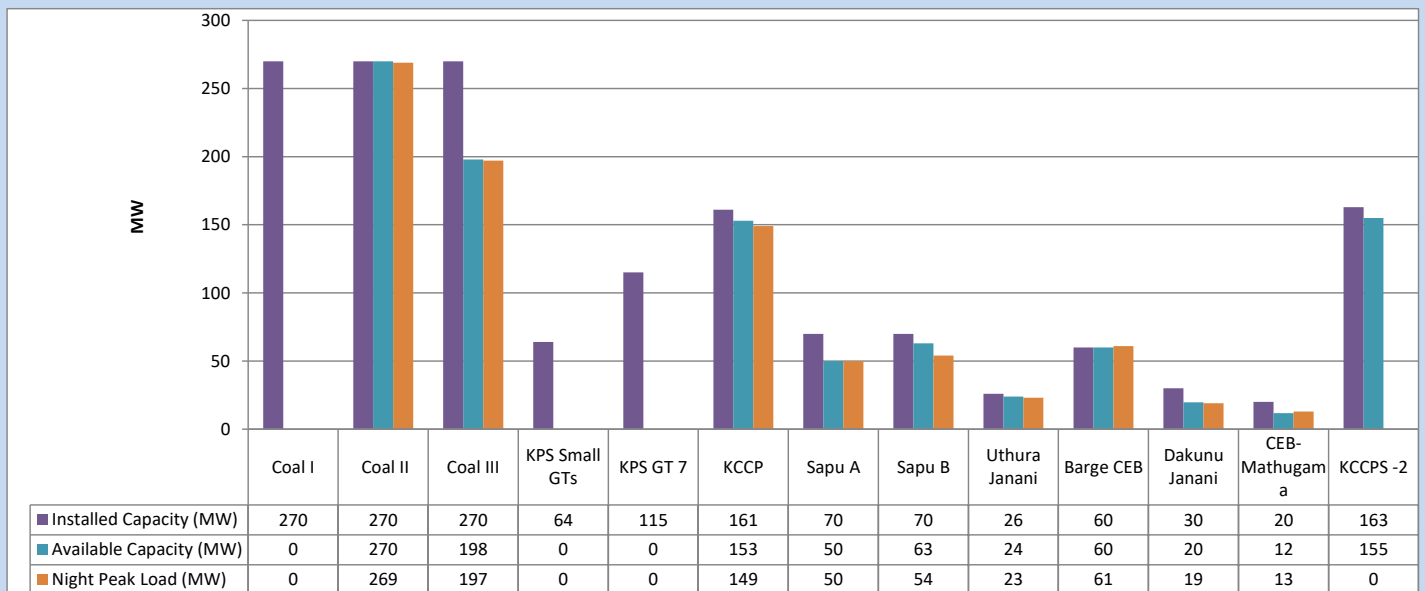
July 23, 2023



Available Generation is estimated based on plant availability at 6.00am on

July 24, 2023

4. CEB owned Thermal Plant Loading at the Night Peak

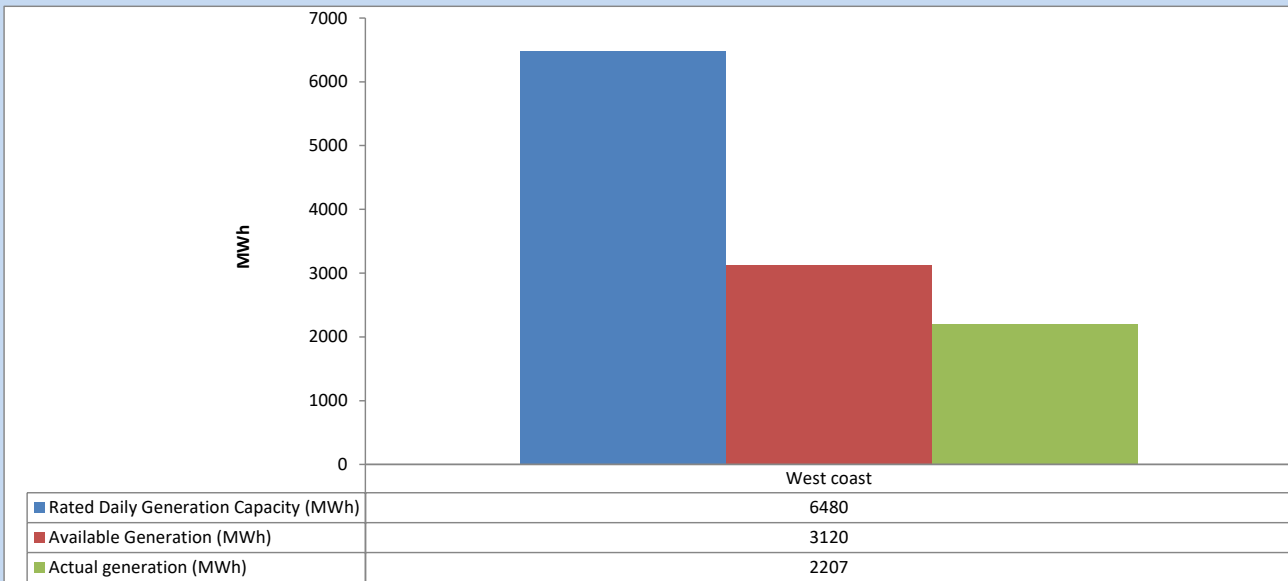


Plant availability is recorded at 6.00 am on

July 24, 2023

5. IPP owned Thermal Plant Dispatch

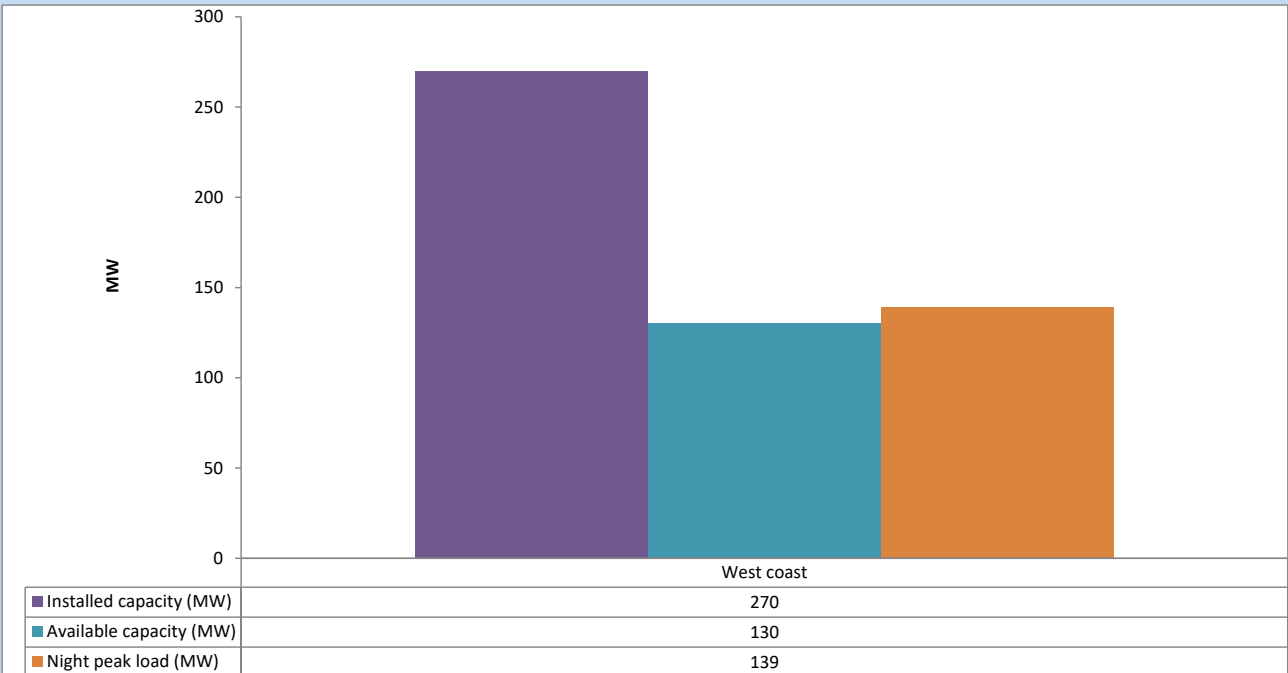
July 23, 2023



Available Generation is estimated based on plant availability at 6.00am on

July 24, 2023

6. IPP owned Thermal Plant Loading at the Night Peak

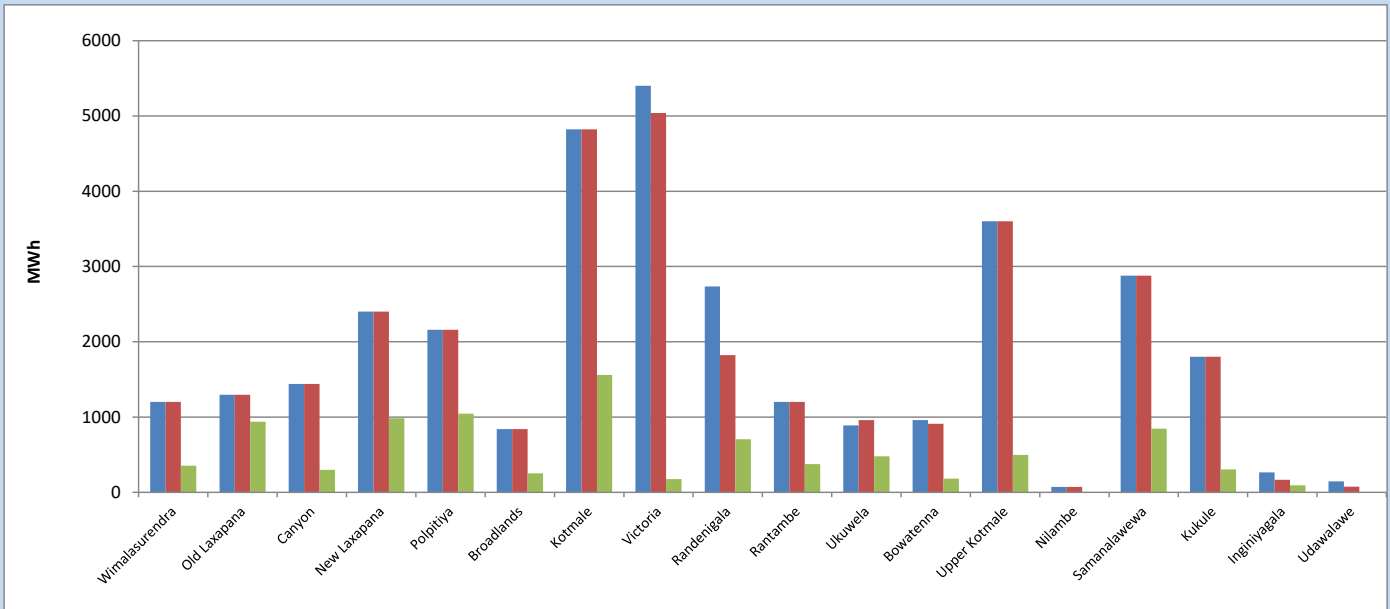


Plant availability is recorded at 6.00 am on

July 24, 2023

7. Major Hydro Plant Dispatch

July 23, 2023

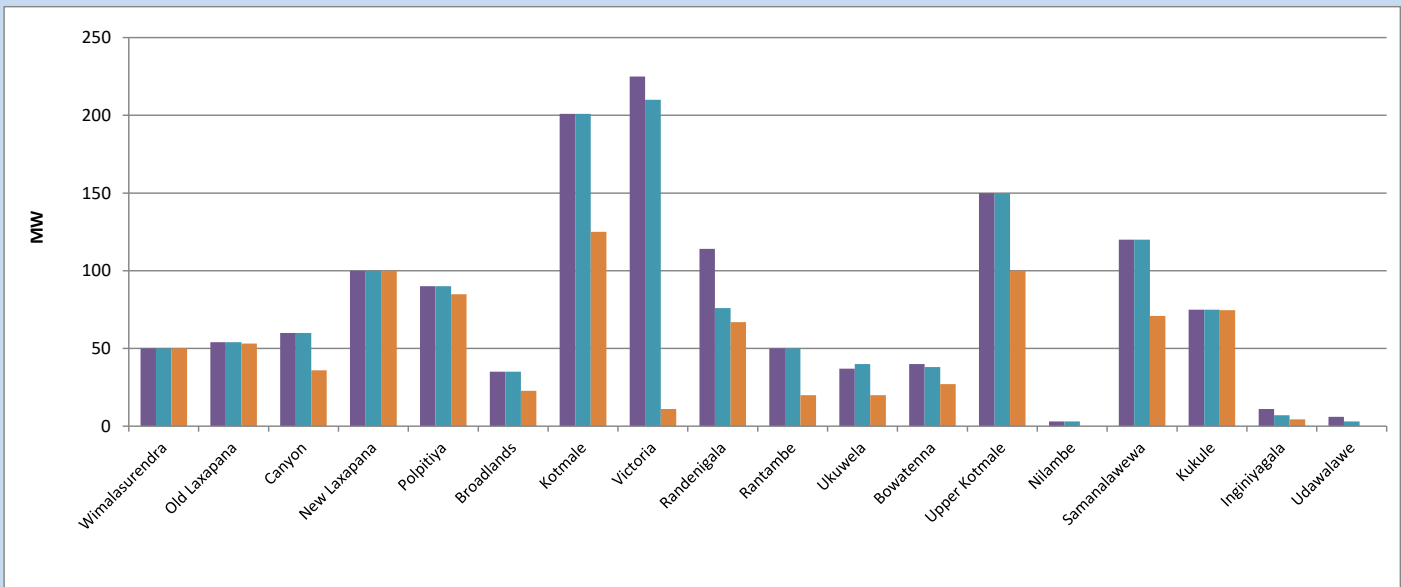


Available Generation is estimated based on plant availability at 6.00am on
Broadlands power plant is operating in the Commissioning Stage

July 24, 2023

8. Major Hydro Plant Loading at Night Peak

July 23, 2023



Plant availability is recorded at 6.00 am on
Broadlands power plant is operating in the Commissioning Stage

July 24, 2023

9. Summary of Major Plant performance

Table 04

Plant	Installed Capacity	Plant Availability	Night peak Load	Plant Dispatch
	(MW)	(MW)	(MW)	(MWh)
Wimalasurendra	50	50	50	353
Old Laxapana	54	54	53	937
Canyon	60	60	36	297
New Laxapana	100	100	100	984
Polpitiya	90	90	85	1,046
Broadlands	35	35	23	252
Kotmale	201	201	125	1,560
Victoria	225	210	11	176
Randenigala	114	76	67	705
Rantambe	50	50	20	374
Ukuwela	37	40	20	479
Bowatenna	40	38	27	182
Upper Kotmale	150	150	100	498
Nilambe	3	3	0	6
Samanalawewa	120	120	71	846
Kukule	75	75	75	306
Inginiyagala	11	7	4	94
Udawalawe	6	3	0	0
Puttalam Coal I	270	0	0	0
Puttalam Coal II	270	270	269	6,371
Puttalam Coal III	270	198	197	4,741
KPS Small GTs	64	0	0	0
KPS GT 7	115	0	0	0
KCCP	161	153	149	3,631
Sapugaskanda A	70	50	50	1,063
Sapugaskanda B	70	63	54	1,234
Uthura Janani	26	24	23	394
Barge CEB	60	60	61	1,352
CEB-Hambantota	30	20	19	295
CEB-Mathugama	20	12	13	54
ACE Matara	24	0	0	0
Asia Power	50	0	0	0
KCCPS -2	163	155	0	0
West Coast	270	130	139	2,207
Nothern Power	36	0	0	0
ACE Embilipitiya	93	0	0	0
Total	3,483	2,497	2,000	35,769

Plant availability is the availability recorded at 6 am on

July 24, 2023

10. Contribution to the Night Peak in MW

July 23, 2023

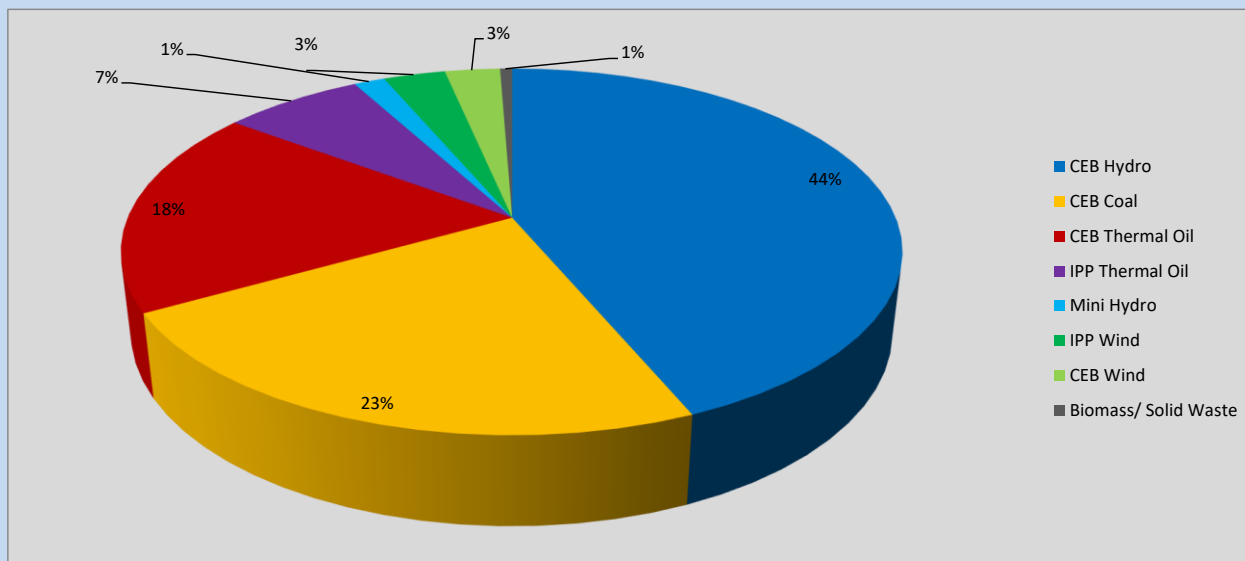


Table 05

CEB Hydro	878	MW
CEB Coal	466	MW
CEB Thermal Oil	369	MW
IPP Thermal Oil	139	MW
Mini Hydro (Telemetered)	31	MW
IPP Wind	61.5	MW
CEB Wind	54.9	MW
Biomass/ Solid Waste	12	MW

Recorded Peak Demand Data

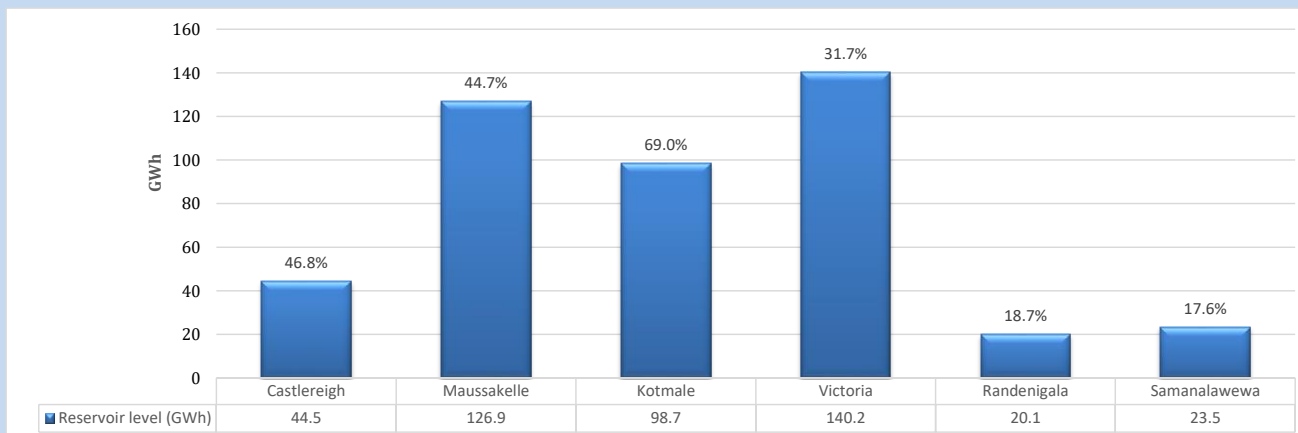
Table 06

Night Peak*	2,011	MW
Day Peak Maximum Demand	1,425	MW
Day Peak Minimum Demand	1,204	MW
Off Peak Minimum Demand	1,274	MW

Above figures are excluding contribution from roof top solar, non telemetered solar and mini hydro plants

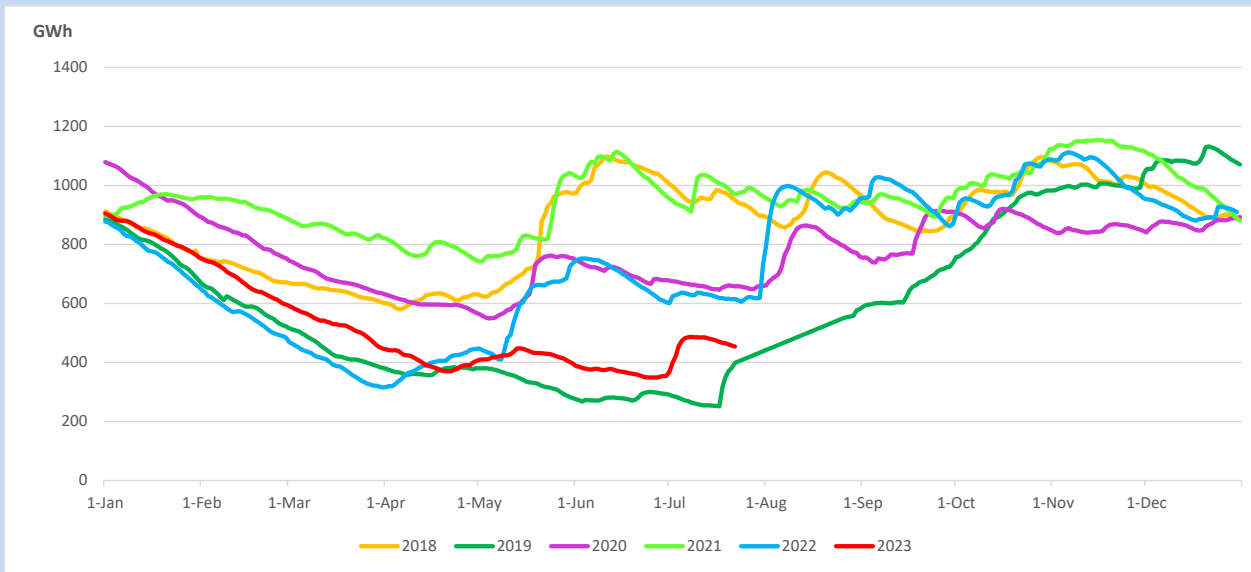
Reservoir Levels -

as at 06.00 Hr on July 24, 2023

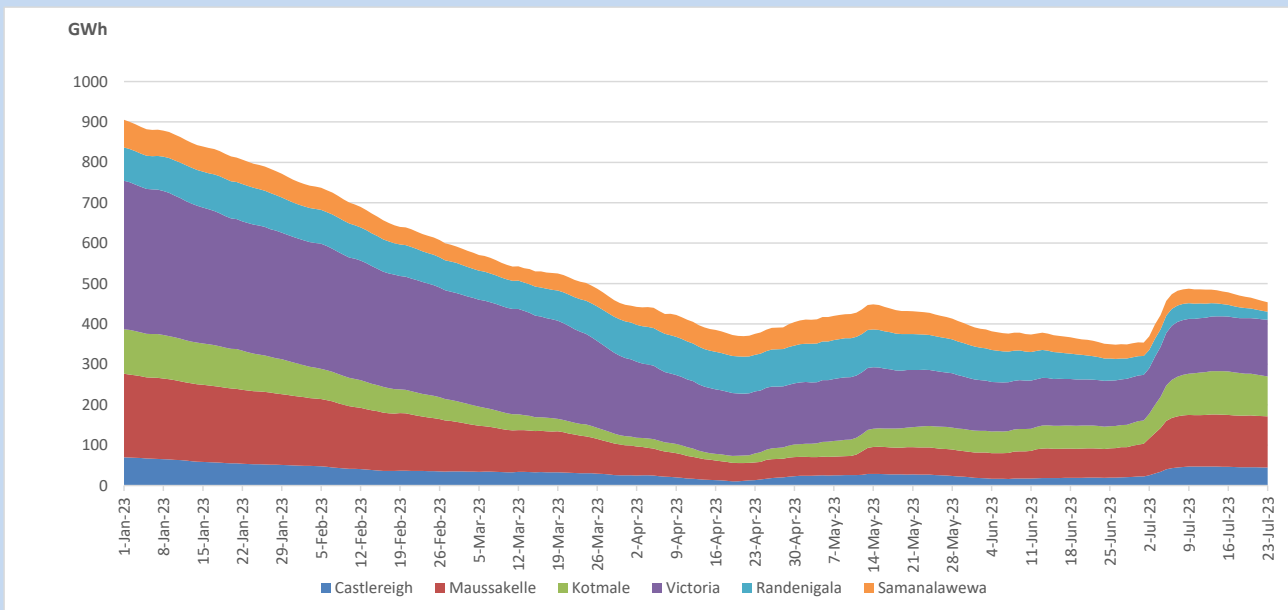


Total Reservoir Level 453.9 GWh
 % of Total capacity 37.7%

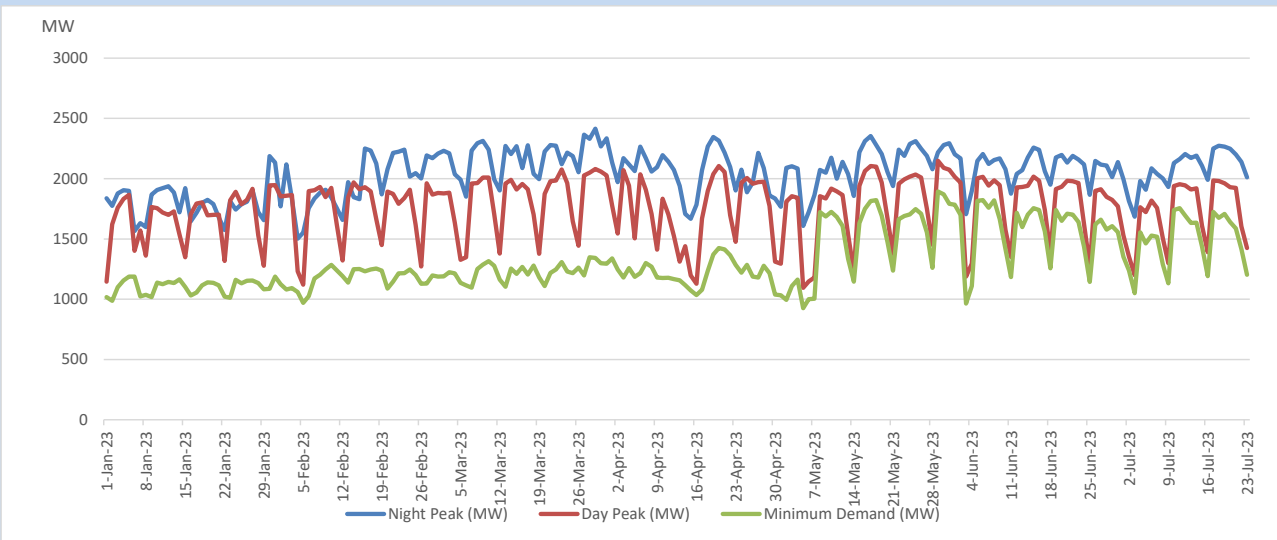
11. Comparison of Total Reservoir Storage Levels with Past Years



12. Variation of Major Hydro Reservoir Levels in the current year (GWh)



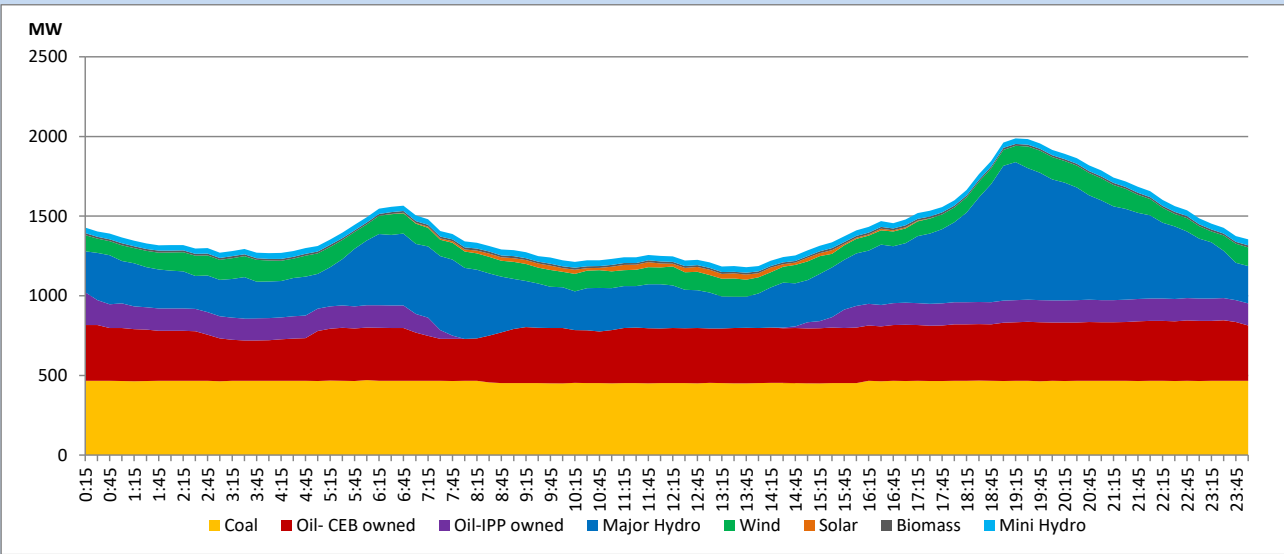
13. Variation of Demand during the current year



The above figures are excluding contribution from roof top solar, non telemetered solar and mini hydro plants

14. Daily Load Curve

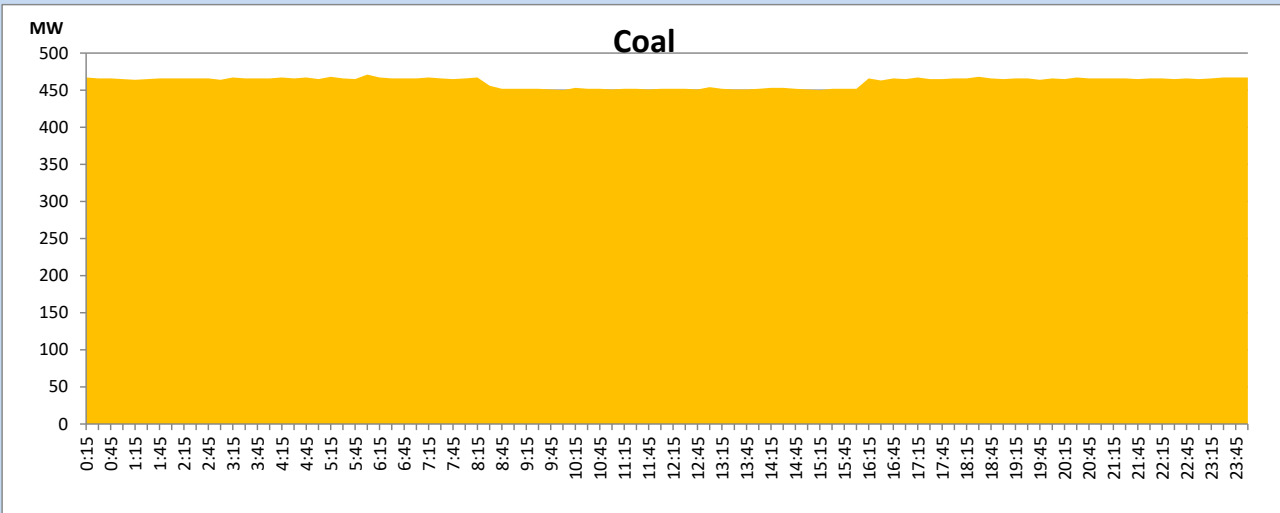
July 23, 2023



Solar and wind data is based on Telemetered Power Stations only

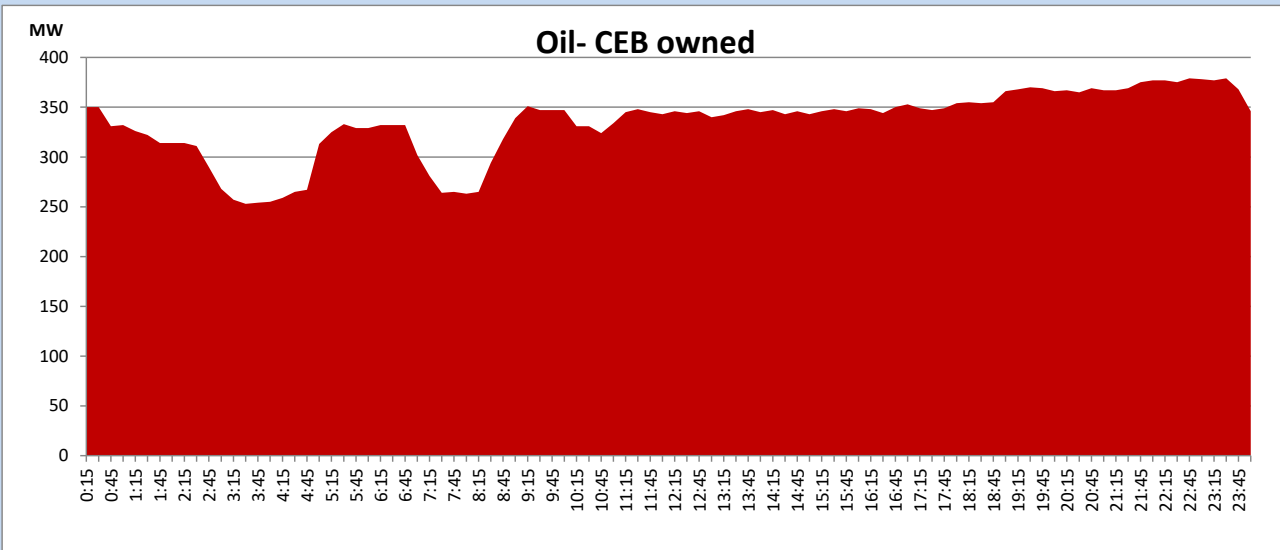
Coal Generation during

July 23, 2023



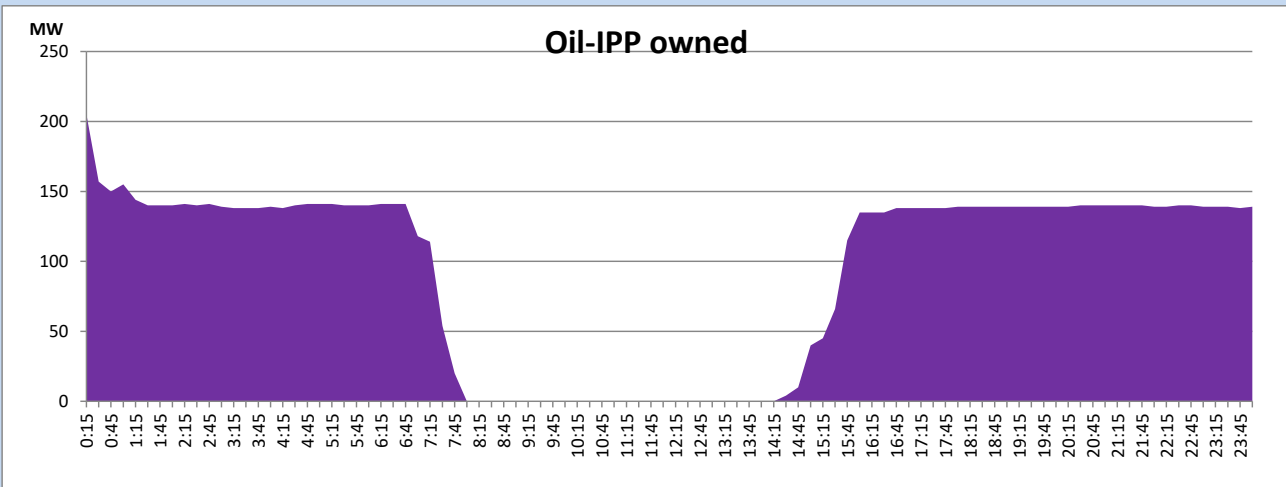
CEB Oil Plant Generation during

July 23, 2023



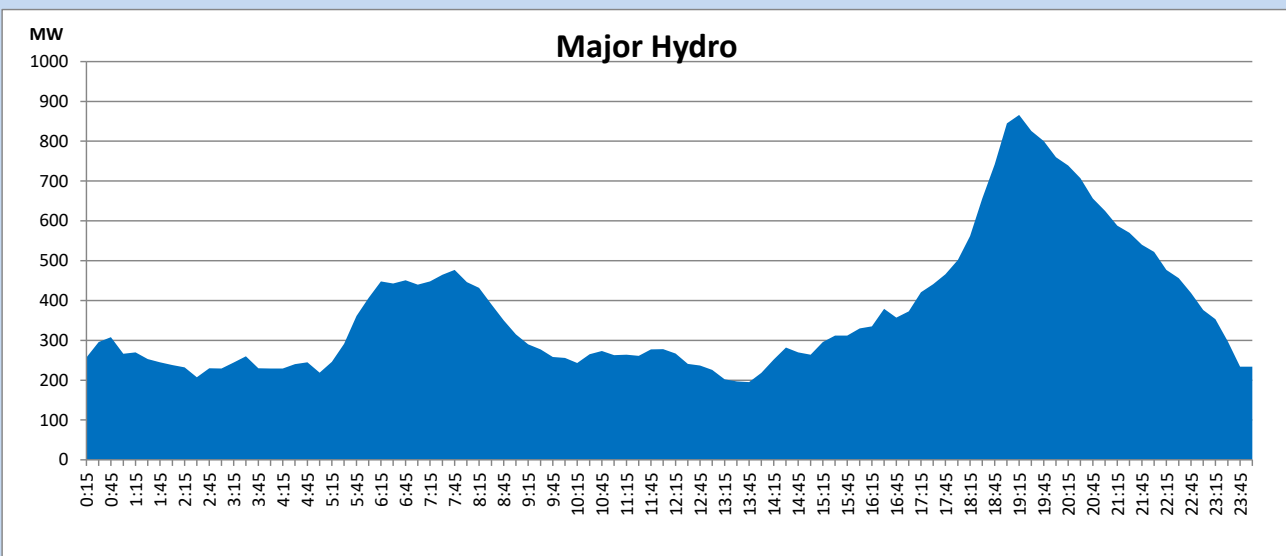
IPP Oil Plant Generation during

July 23, 2023



Major Hydro Generation during

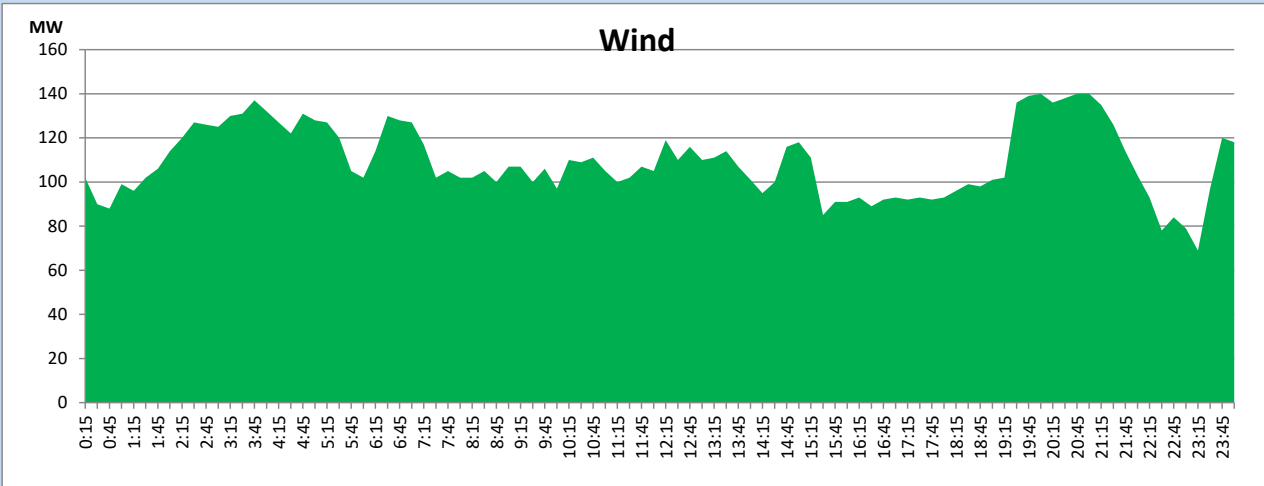
July 23, 2023



Wind Generation during

July 23, 2023

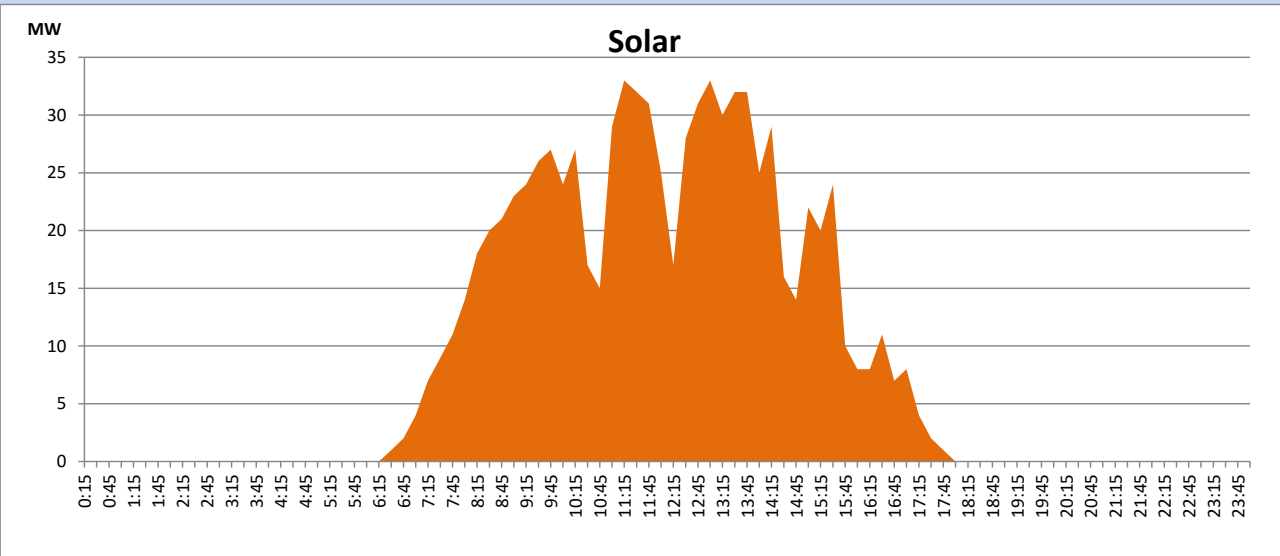
Based on Telemetered Power Stations only



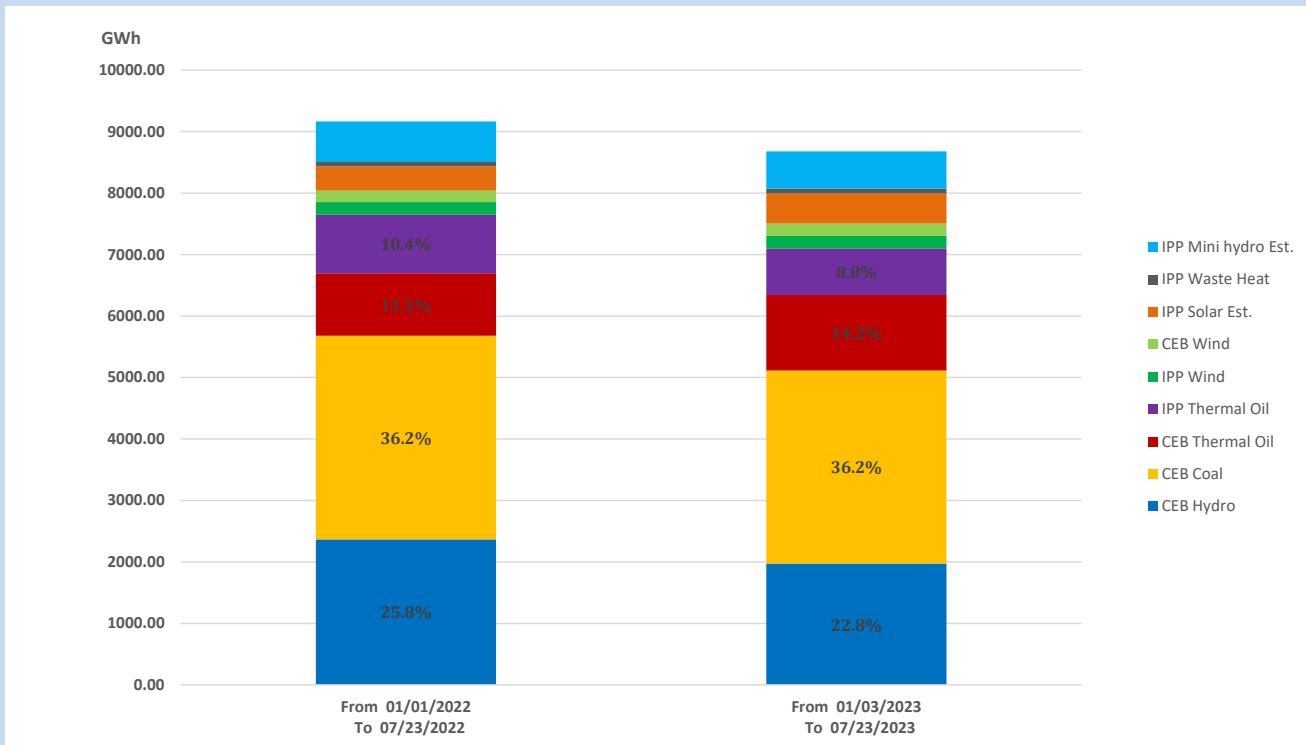
Solar Generation during

July 23, 2023

Based on Telemetered Power Stations only



15. Cumulative Dispatch Comparison with Last Year



Cumulative dispatch

From 01/01/2022 To 07/23/2022

9166 GWh

From 01/01/2023 To 07/23/2023

8679 GWh

The above figures are including contribution from roof top solar, non telemetered solar and mini hydro plants

Thermal Plant Fuel types

Power Station	Primary Fuel
CEB Thermal	
Sapugaskanda 1	Heavy Fuel
Sapugaskanda 2	Heavy Fuel
Kelanitissa Small Gas Turbines	Auto Diesel
GT 7 - Kelanitissa	Auto Diesel
Kelanitissa CCY	Naphtha or Diesel
Lakvijaya 1	Coal
Lakvijaya 2	Coal
Lakvijaya 3	Coal
Uthuru Janani	Heavy Fuel
Barge CEB	Heavy Fuel
KCCPS -2	Auto Diesel

Power Station	Primary Fuel
Private Thermal	
West Coast	Auto Diesel / Heavy Fuel

Major Incidents reported during the day

July 23, 2023

- 1) New Laxapana Unit 01 tripped at 11:48hrs, rejecting 15MW from the system due to high upper guide bearing temperature. The unit resumed generation at 12:42hrs.
- 2) Beliatta-Matara 132kV cct tripped from Matara end, and tripped and A/R from Beliatta end at 19:17hrs due to the operation of distance protection. The cct was normalized at 19:30hrs.
- 3) Kotugoda – Veyangoda 220kV cct 01 tripped and A/R from both ends at 03:49hrs(24.07.2023) due to the operation of differential protection.