

# Generation and Reservoirs Statistics

July 22, 2023



PUBLIC UTILITIES COMMISSION OF SRI LANKA

## 1. Daily Generation Mix in MWh

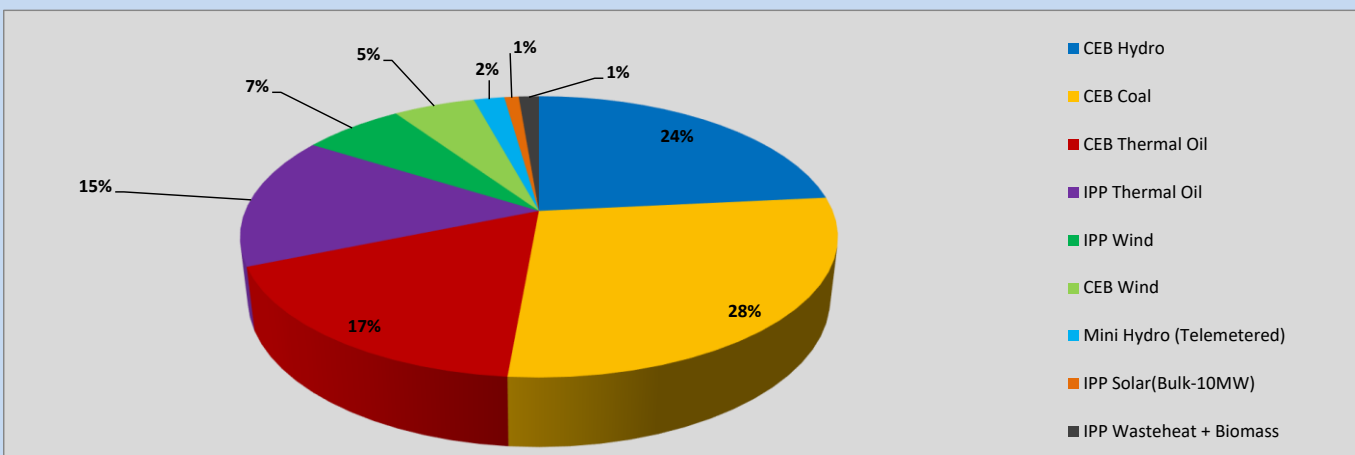


Table 01

CEB Hydro	9,160	MWh
CEB Coal	10,936	MWh
CEB Thermal Oil	6,791	MWh
IPP Thermal Oil	5,936	MWh
IPP Wind	2,563	MWh
CEB Wind	2,068	MWh
Mini Hydro (Telemetered)	778	MWh
IPP Solar (Bulk)	364	MWh
IPP Wasteheat + Biomass	509	MWh
<b>Total Generation (Excluding estimated figures)</b>	<b>39,105</b>	<b>MWh</b>
* Estimated unserved energy	0	MWh
* Estimated Mini Hydro (Non telemetered)	2732	MWh
* Estimated IPP Solar PV (Bulk 1-10MW)	304	MWh
* Estimated Solar Roof Top PV	1650	MWh
<b>Total Generation (Including estimated figures)</b>	<b>43,791</b>	<b>MWh</b>

\* Estimated figures of CEB generation report

## 2. Cumulative Dispatch

Following data excludes the contribution from roof top solar, non telemetered solar and mini hydro plants

Table 02 - Current Month

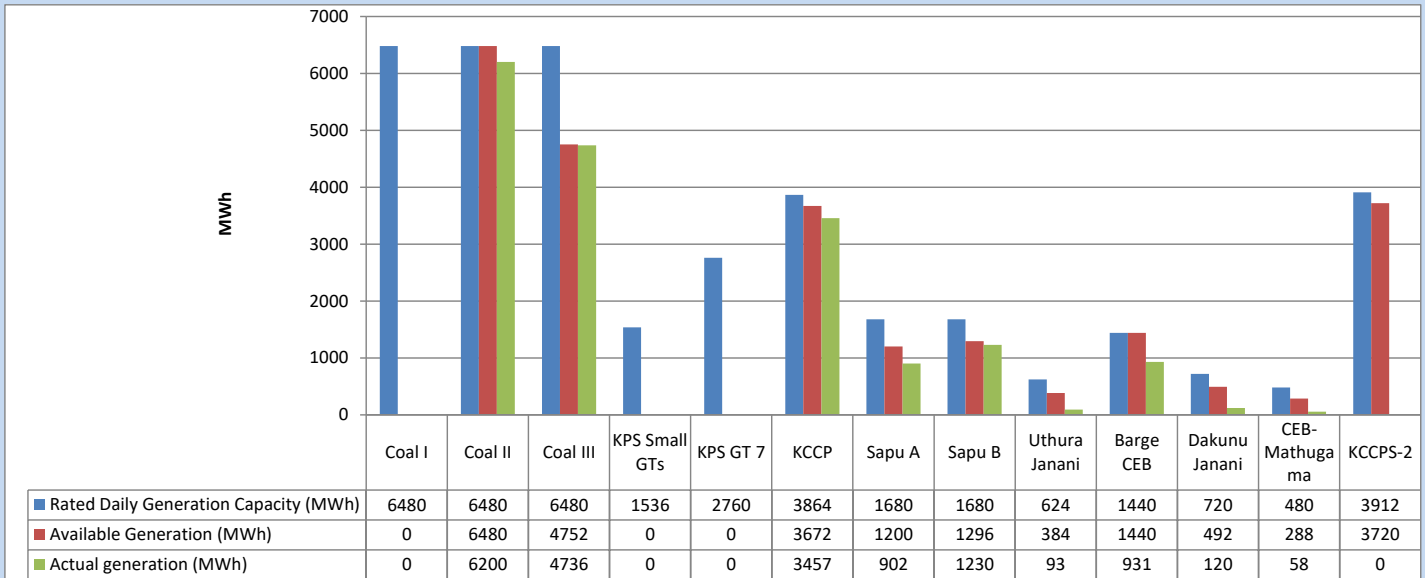
Category	Dispatch (GWh)	
CEB Hydro	233	27.34%
CEB Coal	249	29.22%
CEB Thermal Oil	139	16.38%
IPP Thermal	104	12.18%
SPP Wind	43	5.06%
CEB Wind	38	4.52%
Mini Hydro (Telemetered)	29	3.44%
IPP Solar (Bulk-10MW)	7	0.84%
IPP Wasteheat + BMP	9	1.03%
<b>Total</b>	<b>852</b>	

Table 03 - Current Year

Category	Dispatch (GWh)	
CEB Hydro	1,971	25.25%
CEB Coal	3,132	40.13%
CEB Thermal Oil	1,223	15.67%
IPP Thermal	758	9.71%
SPP Wind	194	2.49%
CEB Wind	203	2.59%
Mini Hydro (Telemetered)	195	2.50%
IPP Solar (Bulk-10MW)	60	0.77%
IPP Wasteheat	69	0.88%
<b>Total</b>	<b>7,804</b>	

### 3. CEB owned Thermal Plant Dispatch

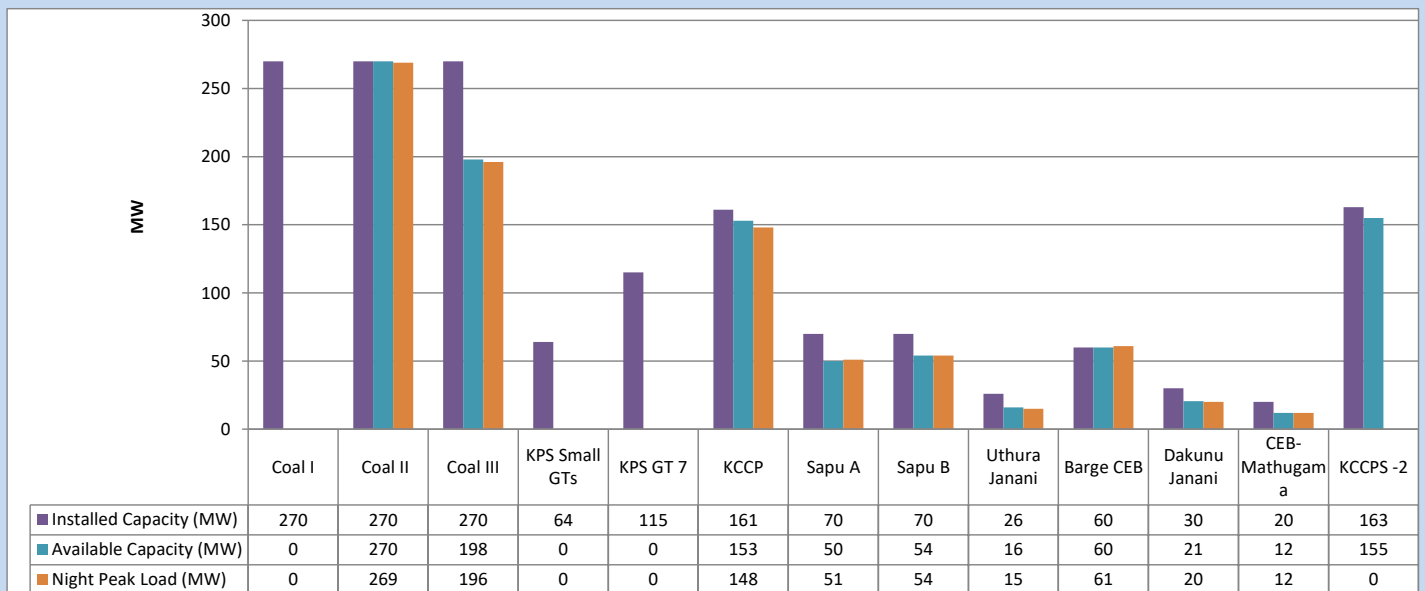
July 22, 2023



Available Generation is estimated based on plant availability at 6.00am on

July 23, 2023

### 4. CEB owned Thermal Plant Loading at the Night Peak

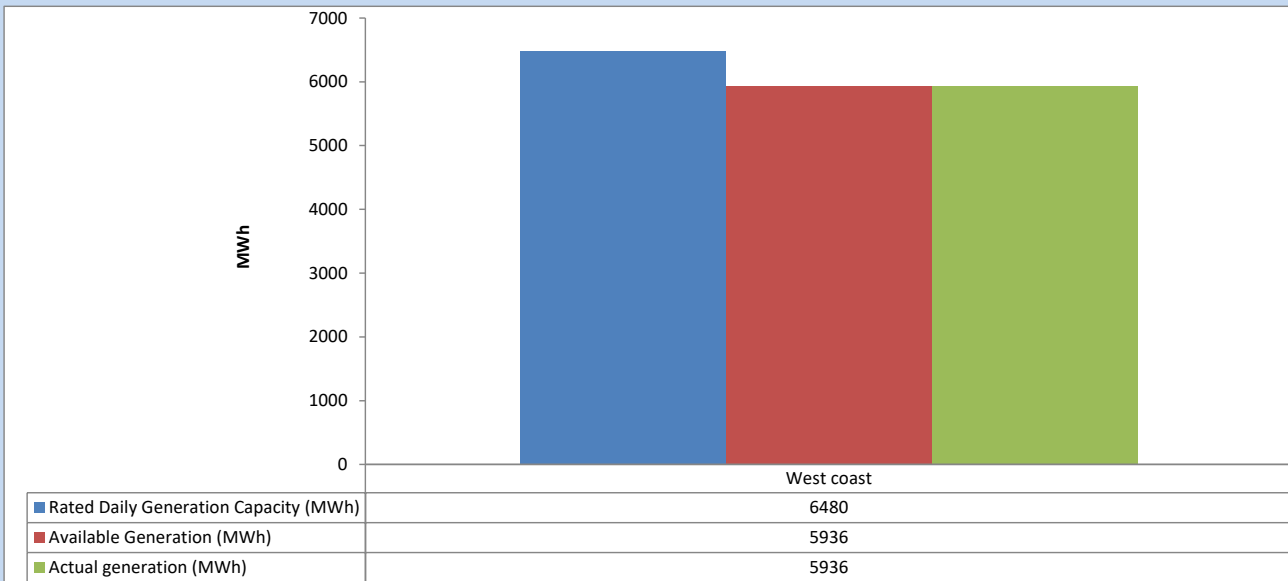


Plant availability is recorded at 6.00 am on

July 23, 2023

## 5. IPP owned Thermal Plant Dispatch

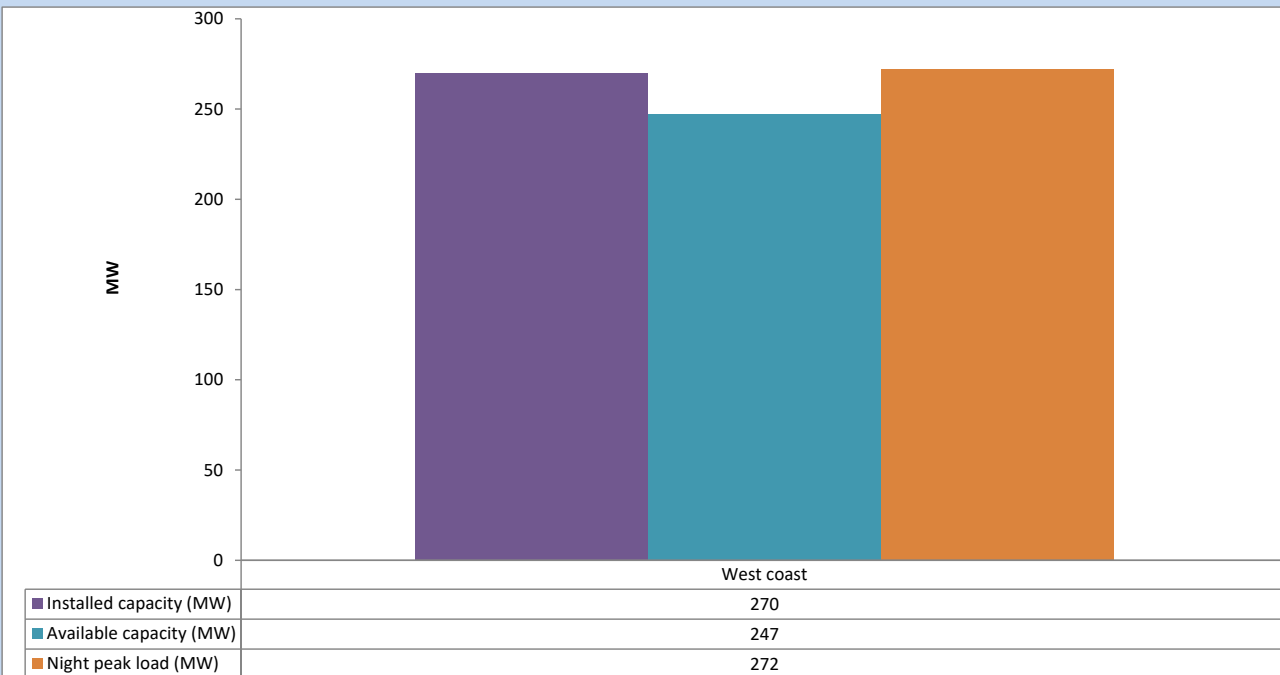
July 22, 2023



Available Generation is estimated based on plant availability at 6.00am on

July 23, 2023

## 6. IPP owned Thermal Plant Loading at the Night Peak

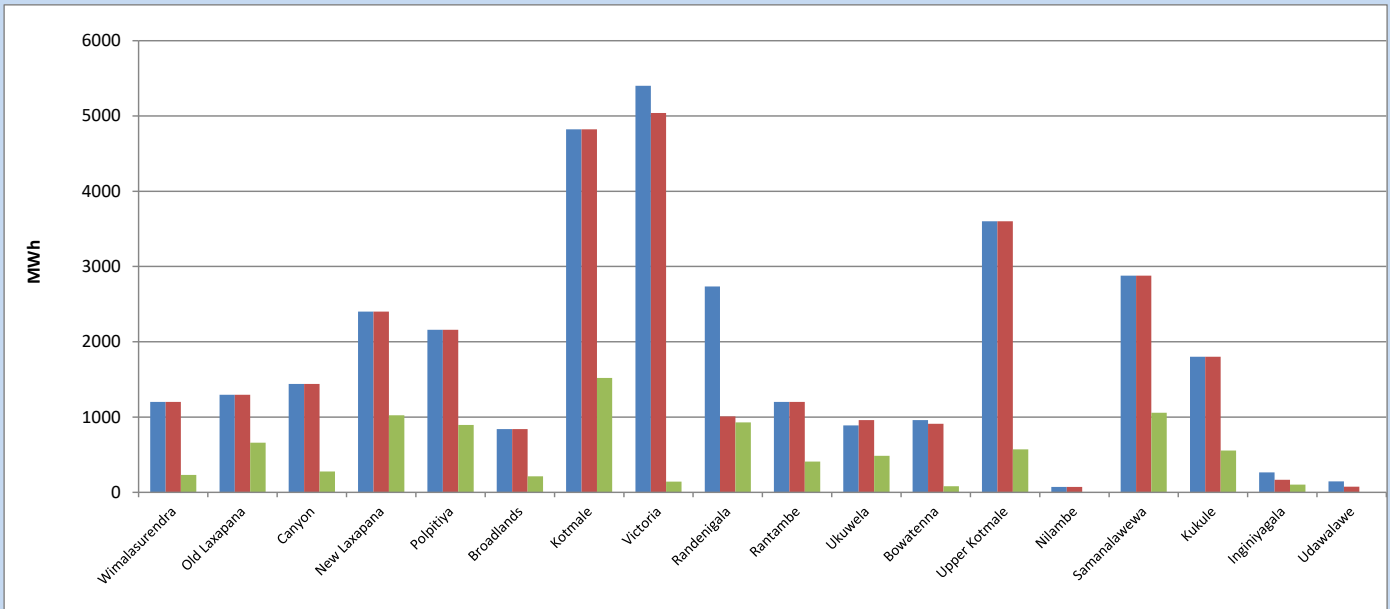


Plant availability is recorded at 6.00 am on

July 23, 2023

## 7. Major Hydro Plant Dispatch

July 22, 2023

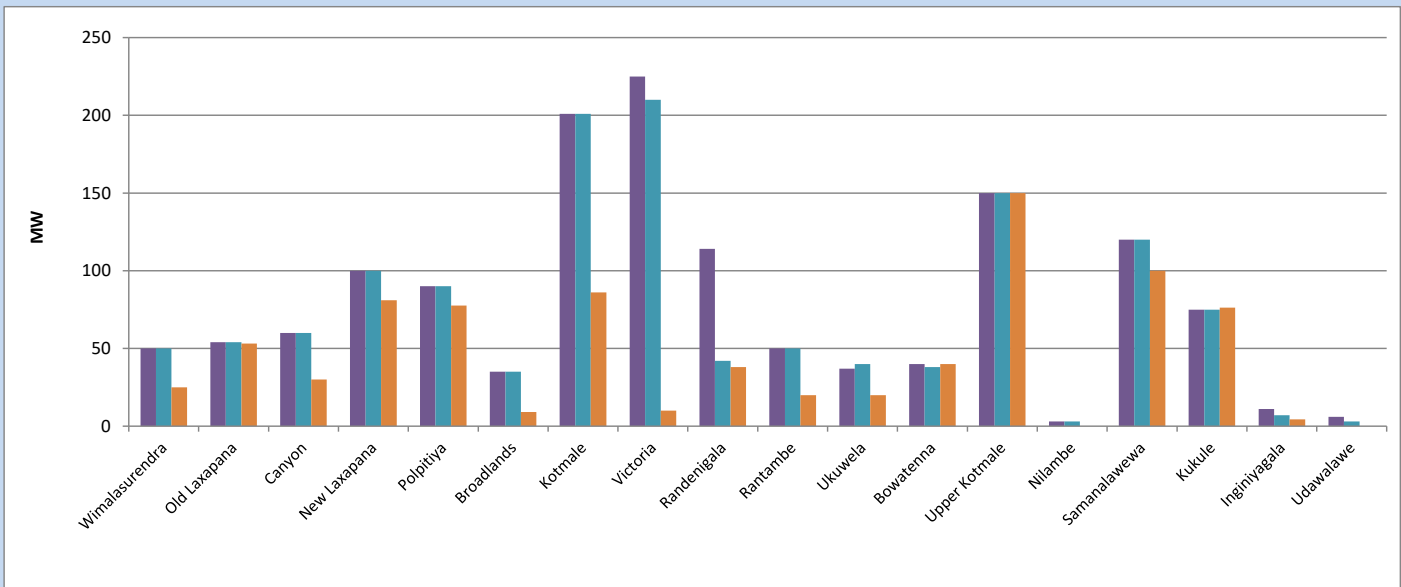


Available Generation is estimated based on plant availability at 6.00am on  
Broadlands power plant is operating in the Commissioning Stage

July 23, 2023

## 8. Major Hydro Plant Loading at Night Peak

July 22, 2023



Plant availability is recorded at 6.00 am on  
Broadlands power plant is operating in the Commissioning Stage

July 23, 2023

## 9. Summary of Major Plant performance

Table 04

Plant	Installed Capacity	Plant Availability	Night peak Load	Plant Dispatch
	(MW)	(MW)	(MW)	(MWh)
Wimalasurendra	50	50	25	232
Old Laxapana	54	54	53	661
Canyon	60	60	30	277
New Laxapana	100	100	81	1,023
Polpitiya	90	90	78	896
Broadlands	35	35	9	212
Kotmale	201	201	86	1,520
Victoria	225	210	10	142
Randenigala	114	42	38	928
Rantambe	50	50	20	409
Ukuwela	37	40	20	485
Bowatenna	40	38	40	81
Upper Kotmale	150	150	150	572
Nilambe	3	3	0	5
Samanalawewa	120	120	100	1,058
Kukule	75	75	76	557
Inginiyagala	11	7	4	102
Udawalawe	6	3	0	0
Puttalam Coal I	270	0	0	0
Puttalam Coal II	270	270	269	6,200
Puttalam Coal III	270	198	196	4,736
KPS Small GTs	64	0	0	0
KPS GT 7	115	0	0	0
KCCP	161	153	148	3,457
Sapugaskanda A	70	50	51	902
Sapugaskanda B	70	54	54	1,230
Uthura Janani	26	16	15	93
Barge CEB	60	60	61	931
CEB-Hambantota	30	21	20	120
CEB-Mathugama	20	12	12	58
ACE Matara	24	0	0	0
Asia Power	50	0	0	0
KCCPS -2	163	155	0	0
West Coast	270	247	272	5,936
Nothern Power	36	0	0	0
ACE Embilipitiya	93	0	0	0
<b>Total</b>	<b>3,483</b>	<b>2,564</b>	<b>2,120</b>	<b>39,105</b>

Plant availability is the availability recorded at 6 am on

July 23, 2023

### 10. Contribution to the Night Peak in MW

July 22, 2023

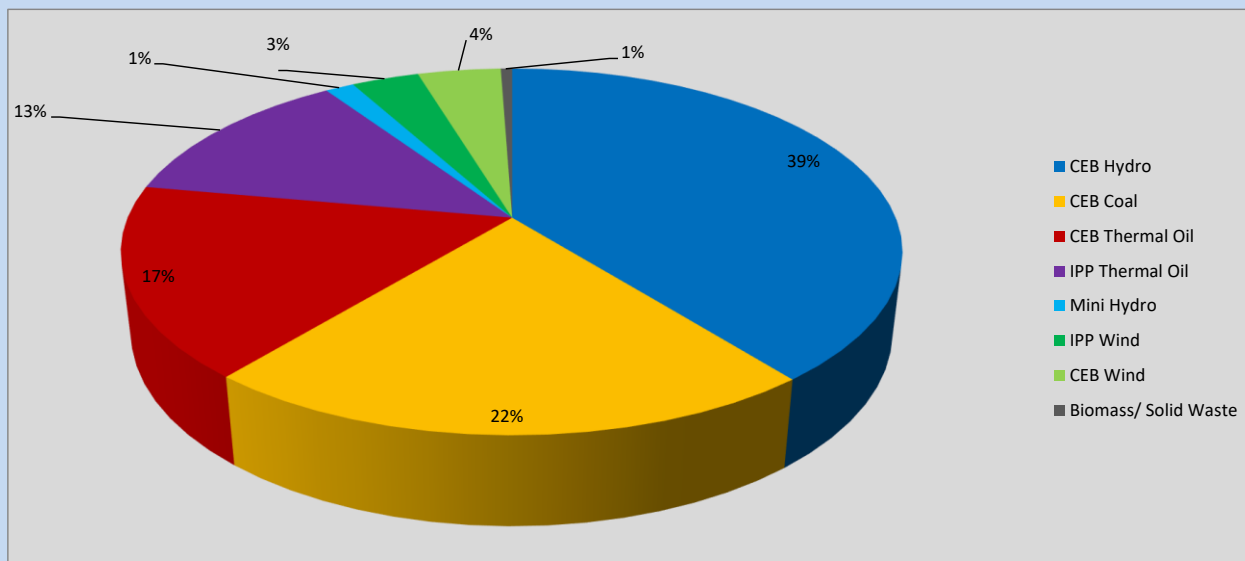


Table 05

CEB Hydro	840	MW
CEB Coal	465	MW
CEB Thermal Oil	361	MW
IPP Thermal Oil	272	MW
Mini Hydro (Telemetered)	30	MW
IPP Wind	71.3	MW
CEB Wind	87.9	MW
Biomass/ Solid Waste	12	MW

### Recorded Peak Demand Data

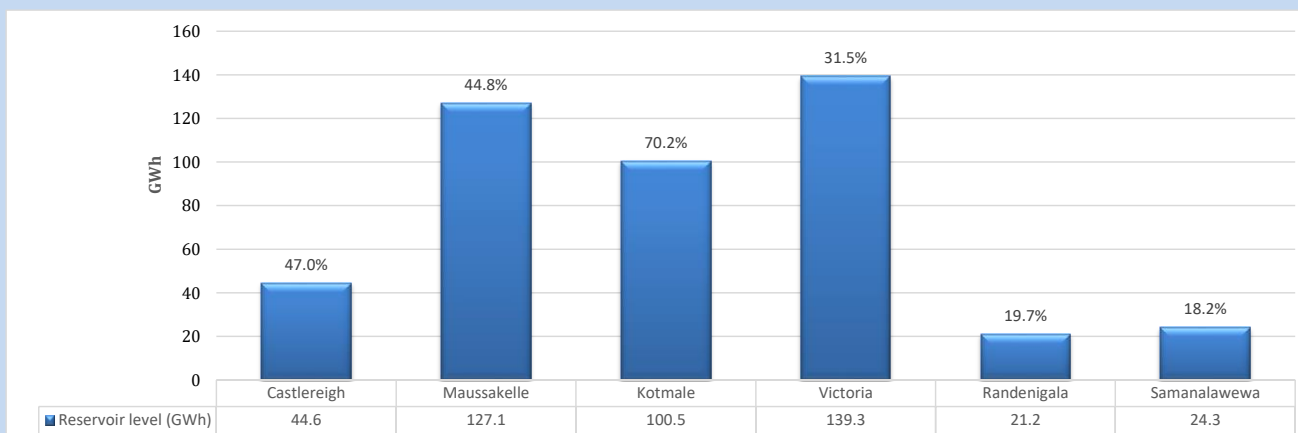
Table 06

Night Peak*	2,140	MW
Day Peak Maximum Demand	1,605	MW
Day Peak Minimum Demand	1,418	MW
Off Peak Minimum Demand	1,303	MW

Above figures are excluding contribution from roof top solar, non telemetered solar and mini hydro plants

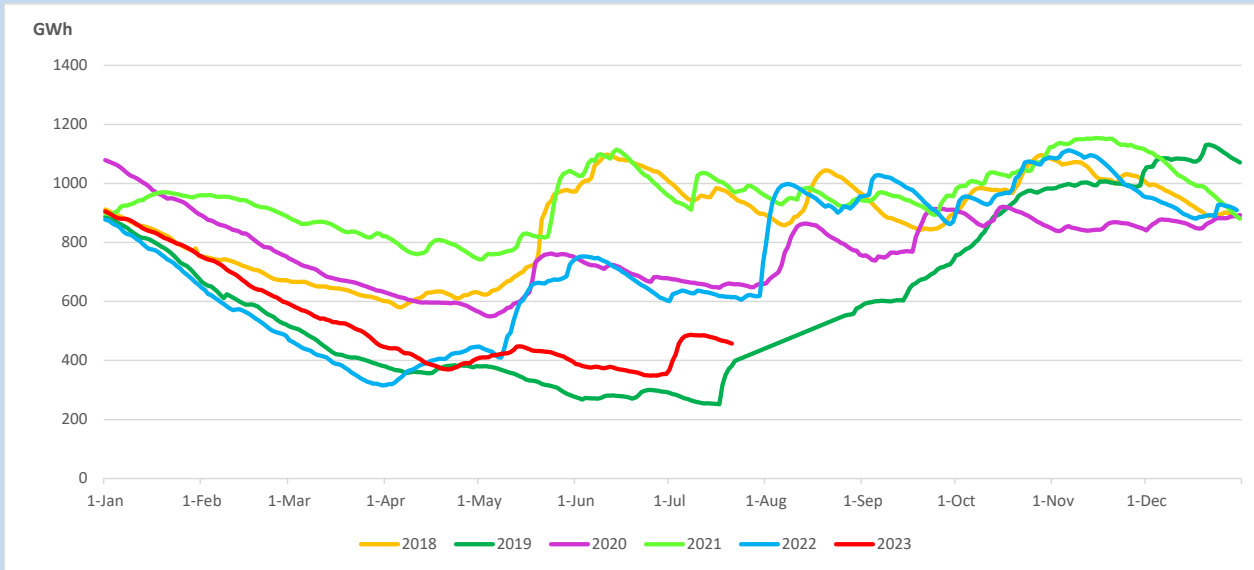
### Reservoir Levels -

as at 06.00 Hr on July 23, 2023

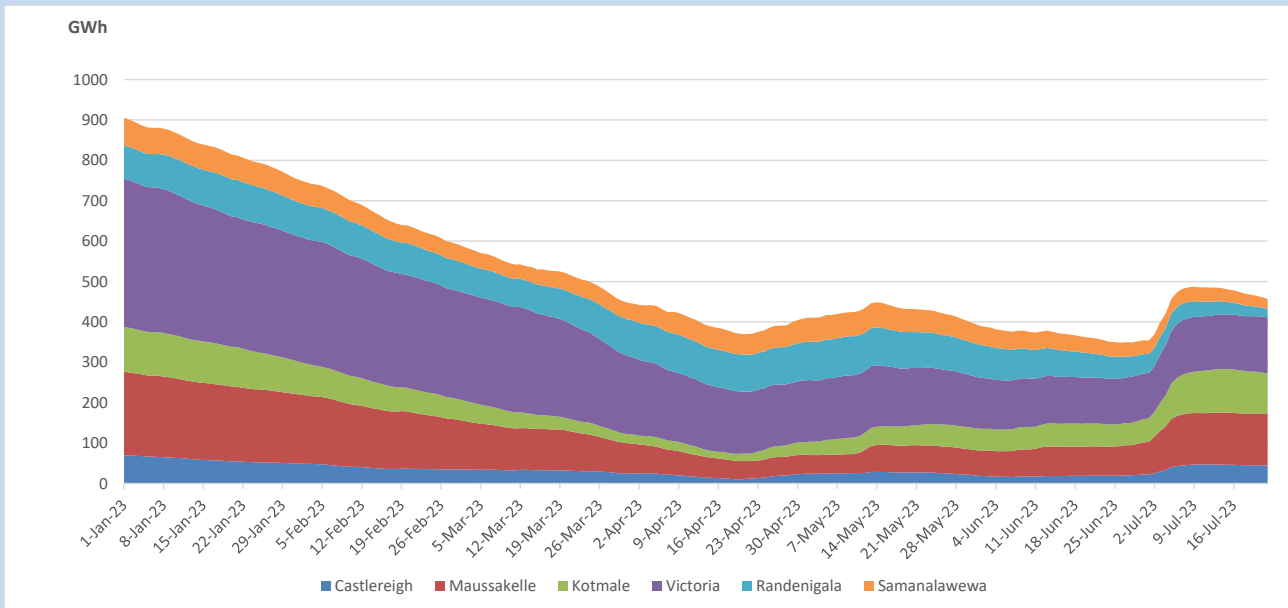


Total Reservoir Level 457 GWh  
 % of Total capacity 37.9%

## 11. Comparison of Total Reservoir Storage Levels with Past Years

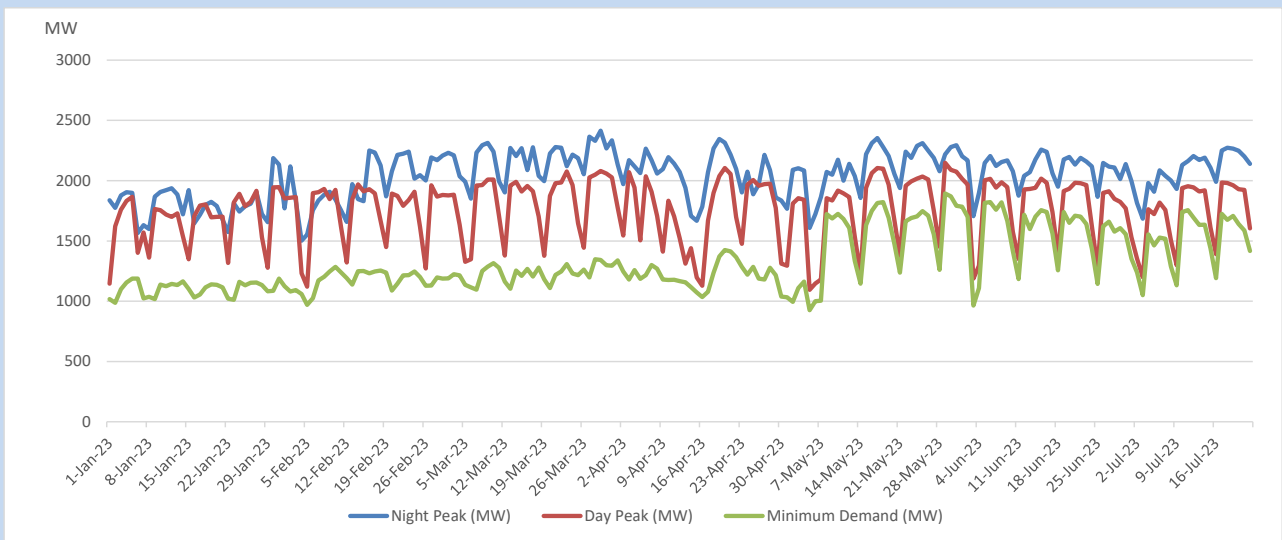


## 12. Variation of Major Hydro Reservoir Levels in the current year (GWh)





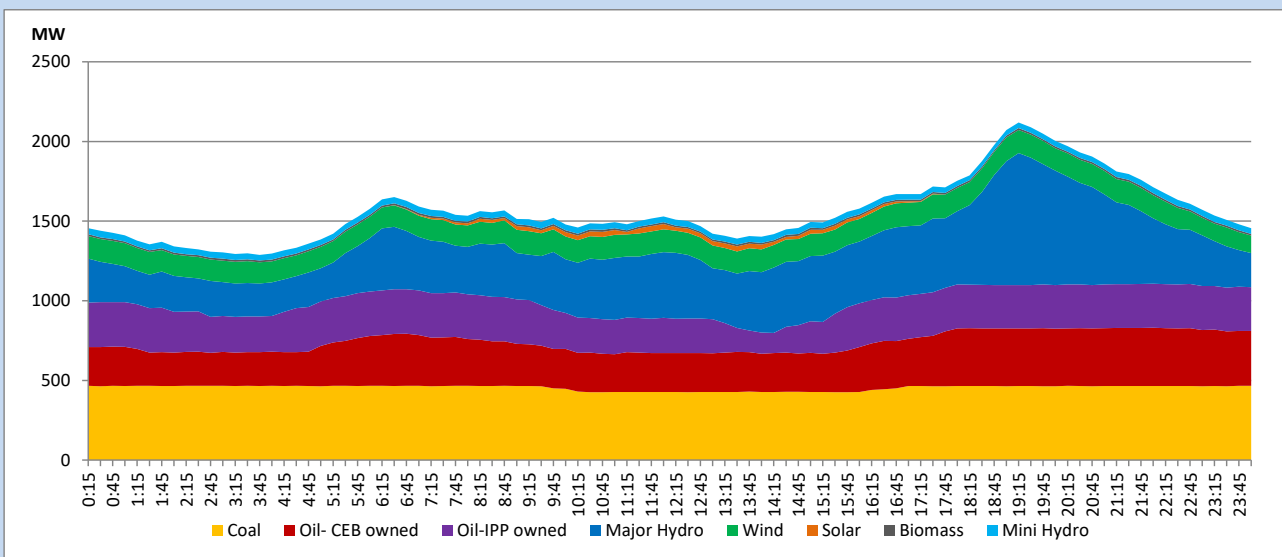
### 13. Variation of Demand during the current year



The above figures are excluding contribution from roof top solar, non telemetered solar and mini hydro plants

### 14. Daily Load Curve

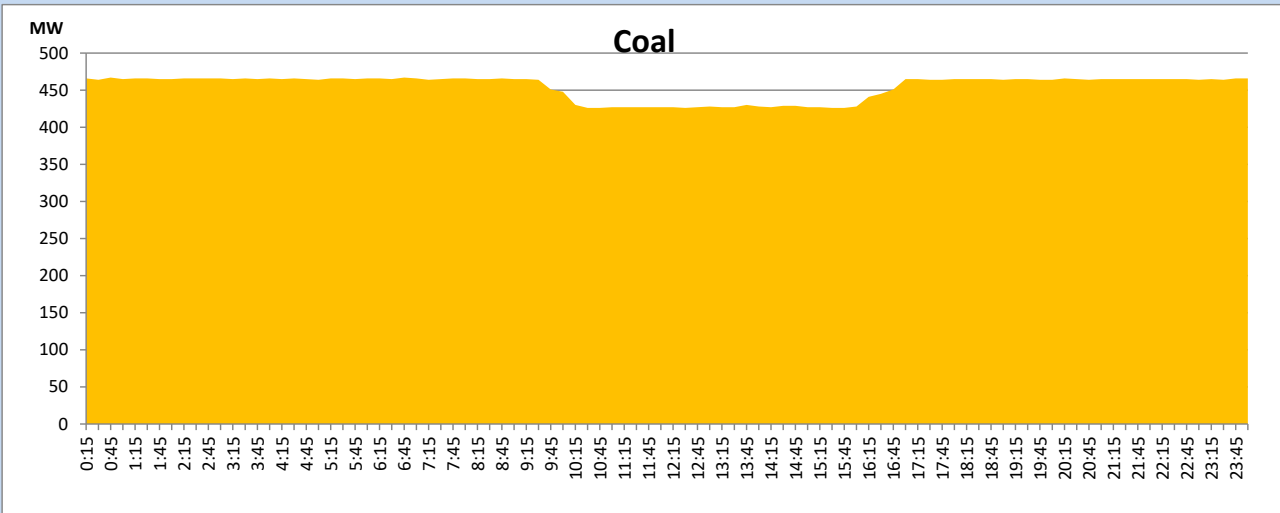
July 22, 2023



Solar and wind data is based on Telemetered Power Stations only

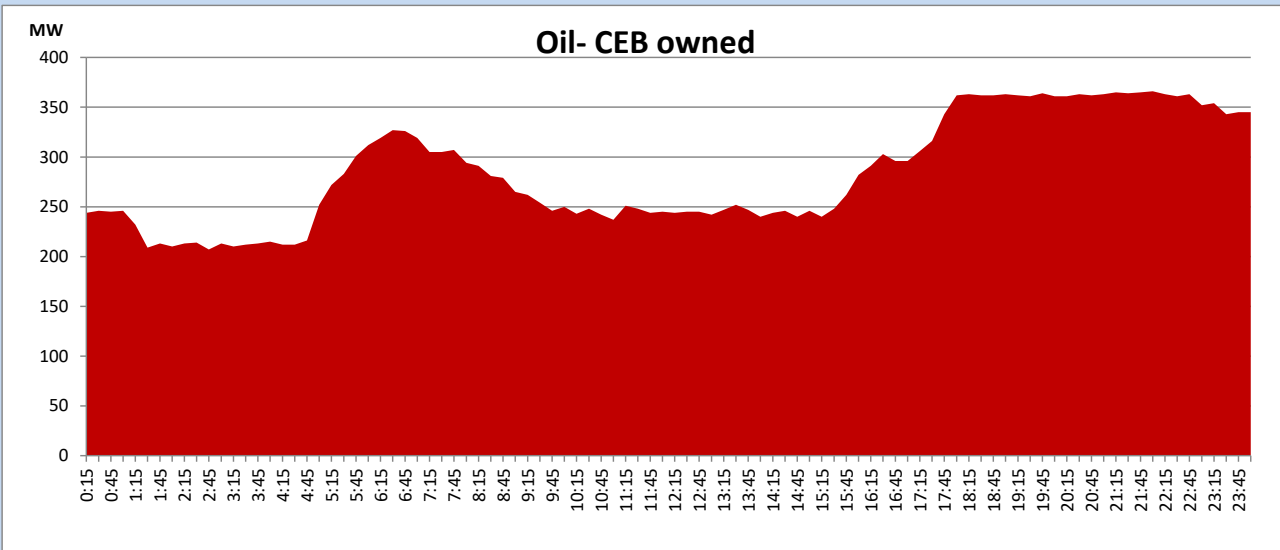
## Coal Generation during

July 22, 2023



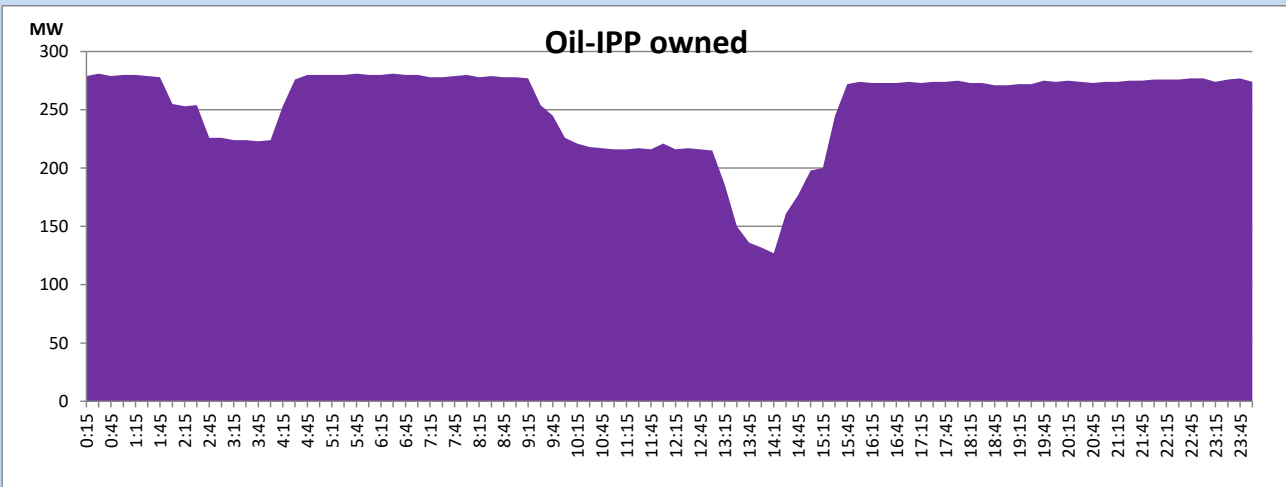
## CEB Oil Plant Generation during

July 22, 2023



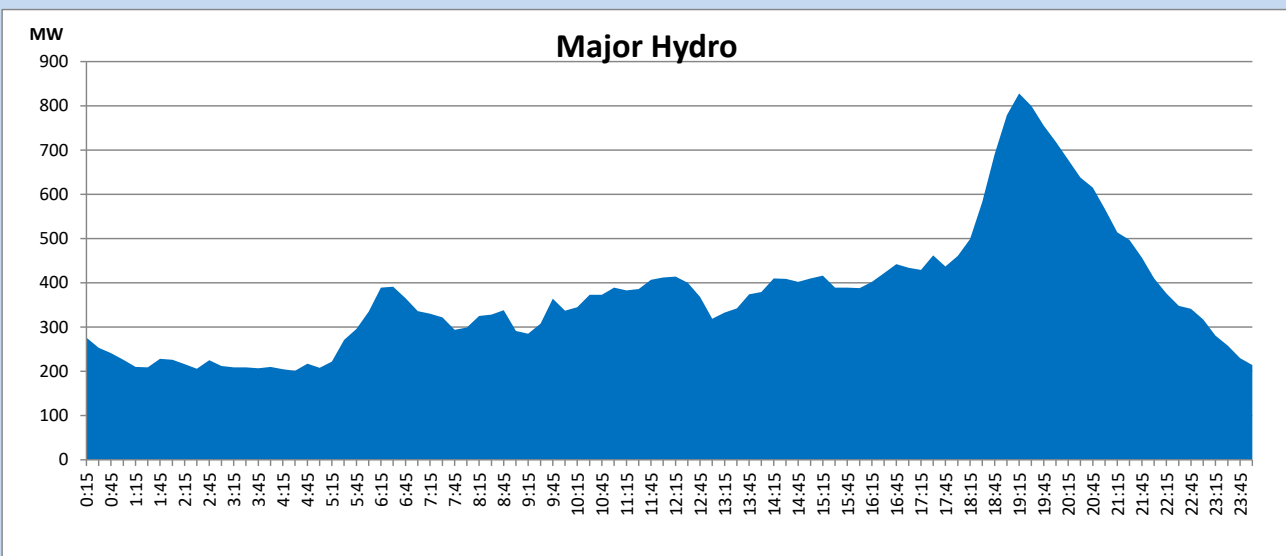
IPP Oil Plant Generation during

July 22, 2023



Major Hydro Generation during

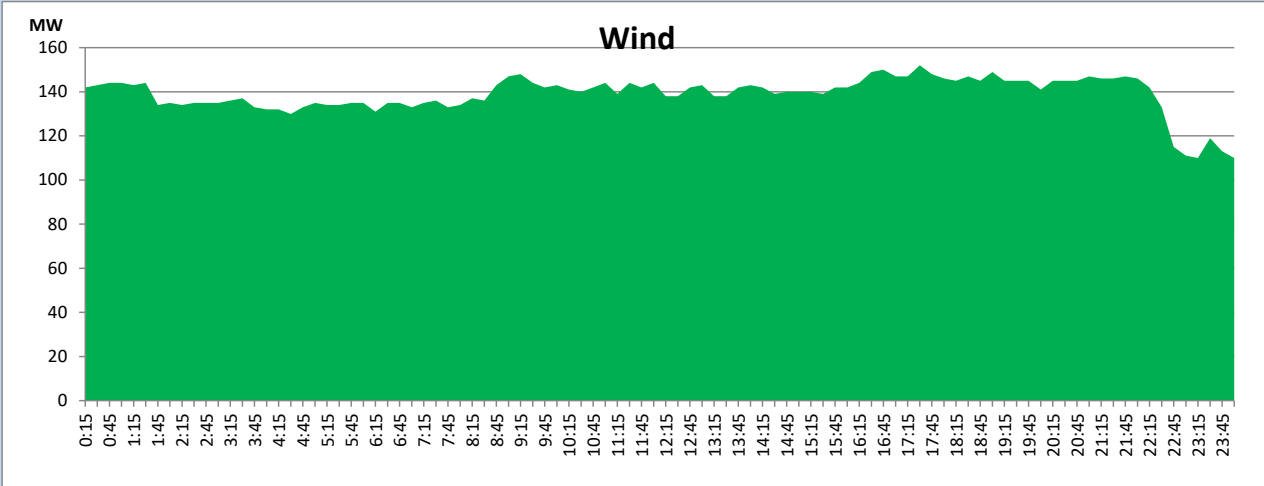
July 22, 2023



## Wind Generation during

July 22, 2023

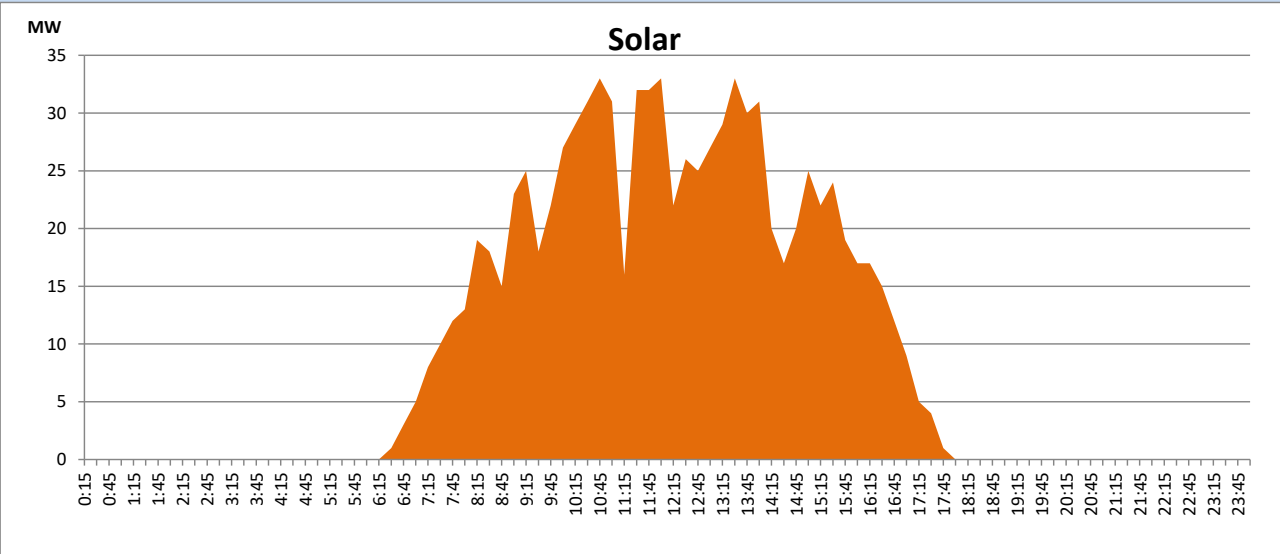
Based on Telemetered Power Stations only



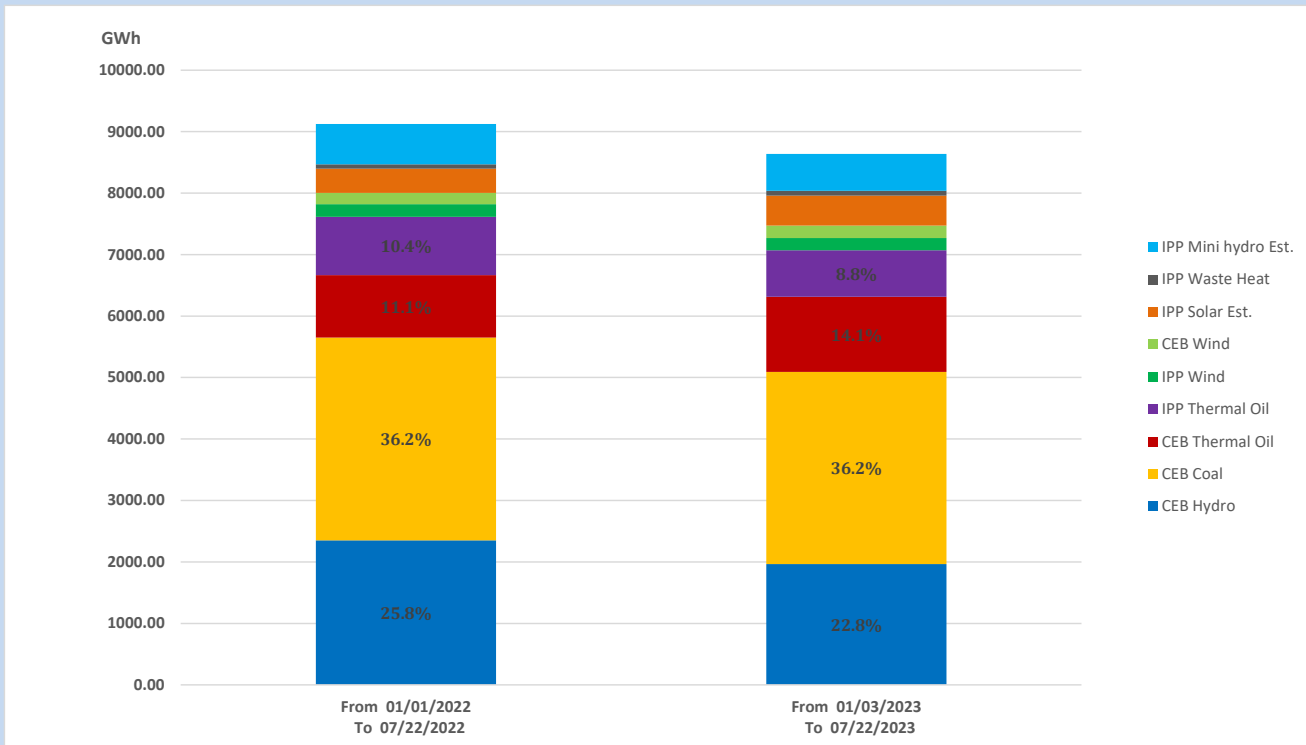
## Solar Generation during

July 22, 2023

Based on Telemetered Power Stations only



## 15. Cumulative Dispatch Comparison with Last Year



### Cumulative dispatch

From 01/01/2022 To 07/22/2022

9125 GWh

From 01/01/2023 To 07/22/2023

8638 GWh

The above figures are including contribution from roof top solar, non telemetered solar and mini hydro plants

**Thermal Plant Fuel types**

<b>Power Station</b>	<b>Primary Fuel</b>
<b>CEB Thermal</b>	
<b>Sapugaskanda 1</b>	Heavy Fuel
<b>Sapugaskanda 2</b>	Heavy Fuel
<b>Kelanitissa Small Gas Turbines</b>	Auto Diesel
<b>GT 7 - Kelanitissa</b>	Auto Diesel
<b>Kelanitissa CCY</b>	Naphtha or Diesel
<b>Lakvijaya 1</b>	Coal
<b>Lakvijaya 2</b>	Coal
<b>Lakvijaya 3</b>	Coal
<b>Uthuru Janani</b>	Heavy Fuel
<b>Barge CEB</b>	Heavy Fuel
<b>KCCPS -2</b>	Auto Diesel

<b>Power Station</b>	<b>Primary Fuel</b>
<b>Private Thermal</b>	
<b>West Coast</b>	Auto Diesel / Heavy Fuel

**Major Incidents reported during the day**

July 22, 2023

1) Nil.