

Generation and Reservoirs Statistics

July 21, 2023



PUBLIC UTILITIES COMMISSION OF SRI LANKA

1. Daily Generation Mix in MWh

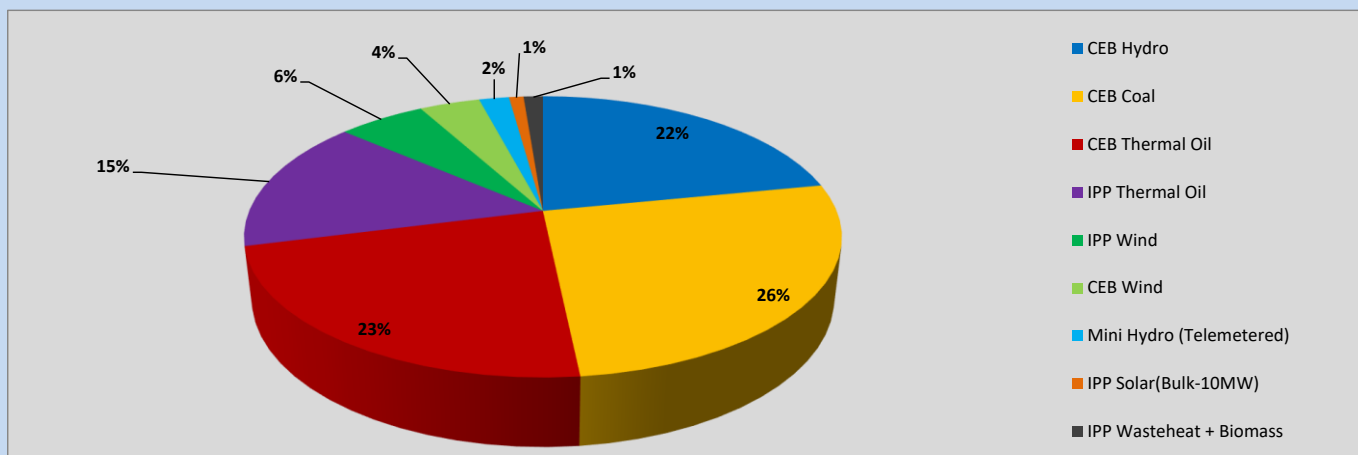


Table 01

CEB Hydro	9,284	MWh
CEB Coal	11,213	MWh
CEB Thermal Oil	9,618	MWh
IPP Thermal Oil	6,479	MWh
IPP Wind	2,396	MWh
CEB Wind	1,661	MWh
Mini Hydro (Telemetered)	822	MWh
IPP Solar (Bulk)	400	MWh
IPP Wasteheat + Biomass	529	MWh
Total Generation (Excluding estimated figures)	42,402	MWh
* Estimated unserved energy	0	MWh
* Estimated Mini Hydro (Non telemetered)	2688	MWh
* Estimated IPP Solar PV (Bulk 1-10MW)	304	MWh
* Estimated Solar Roof Top PV	1650	MWh
Total Generation (Including estimated figures)	47,044	MWh

* Estimated figures of CEB generation report

2. Cumulative Dispatch

Following data excludes the contribution from roof top solar, non telemetered solar and mini hydro plants

Table 02 - Current Month

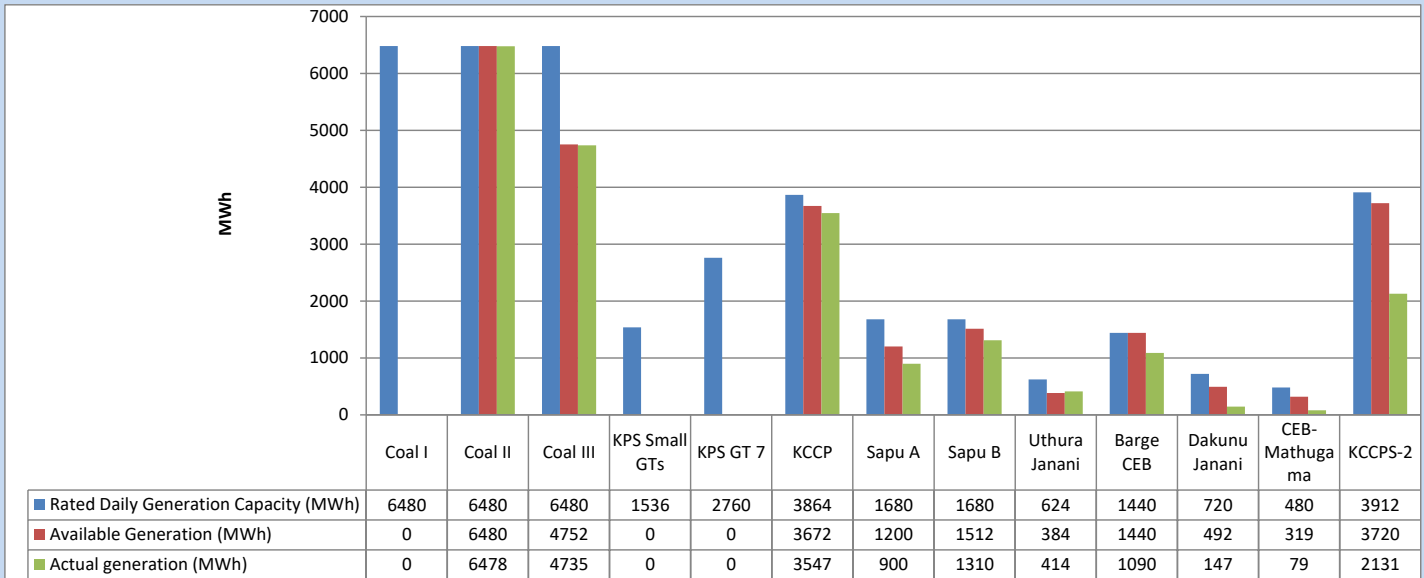
Category	Dispatch (GWh)	
CEB Hydro	224	27.53%
CEB Coal	238	29.28%
CEB Thermal Oil	133	16.33%
IPP Thermal	98	12.03%
SPP Wind	41	4.99%
CEB Wind	36	4.48%
Mini Hydro (Telemetered)	29	3.51%
IPP Solar (Bulk-10MW)	7	0.84%
IPP Wasteheat + BMP	8	1.01%
Total	812	

Table 03 - Current Year

Category	Dispatch (GWh)	
CEB Hydro	1,962	25.26%
CEB Coal	3,121	40.19%
CEB Thermal Oil	1,216	15.66%
IPP Thermal	752	9.68%
SPP Wind	192	2.47%
CEB Wind	200	2.58%
Mini Hydro (Telemetered)	194	2.50%
IPP Solar (Bulk-10MW)	60	0.77%
IPP Wasteheat	68	0.88%
Total	7,765	

3. CEB owned Thermal Plant Dispatch

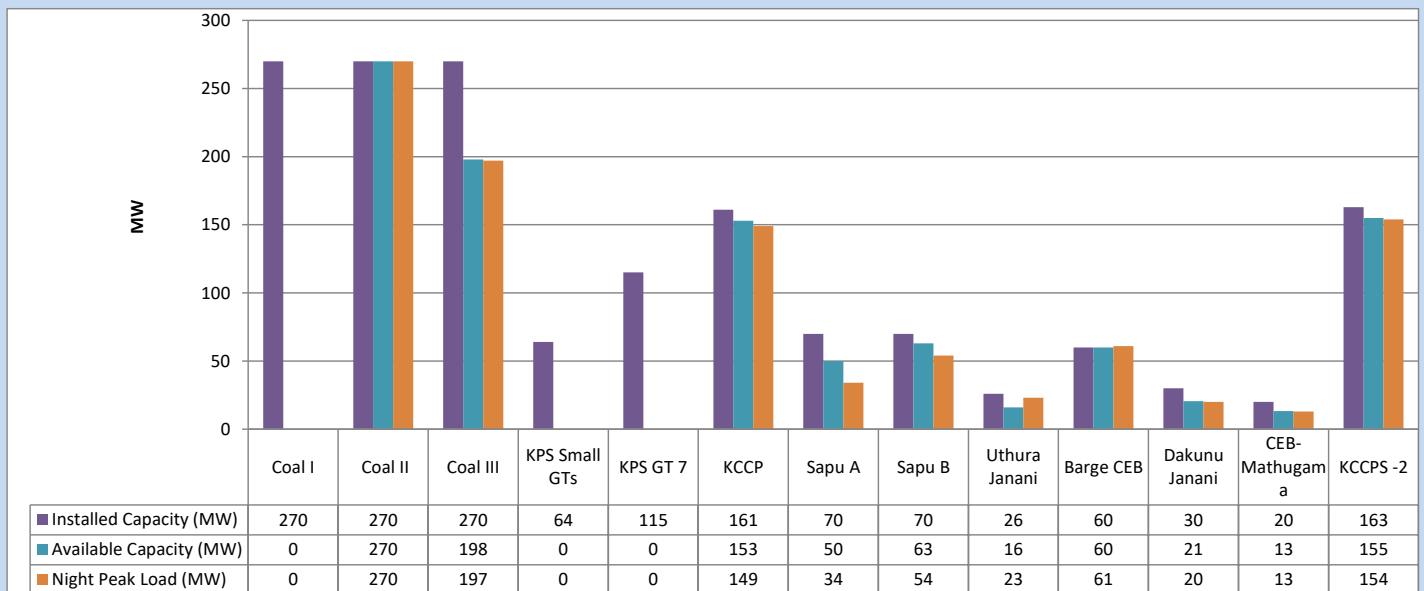
July 21, 2023



Available Generation is estimated based on plant availability at 6.00am on

July 22, 2023

4. CEB owned Thermal Plant Loading at the Night Peak

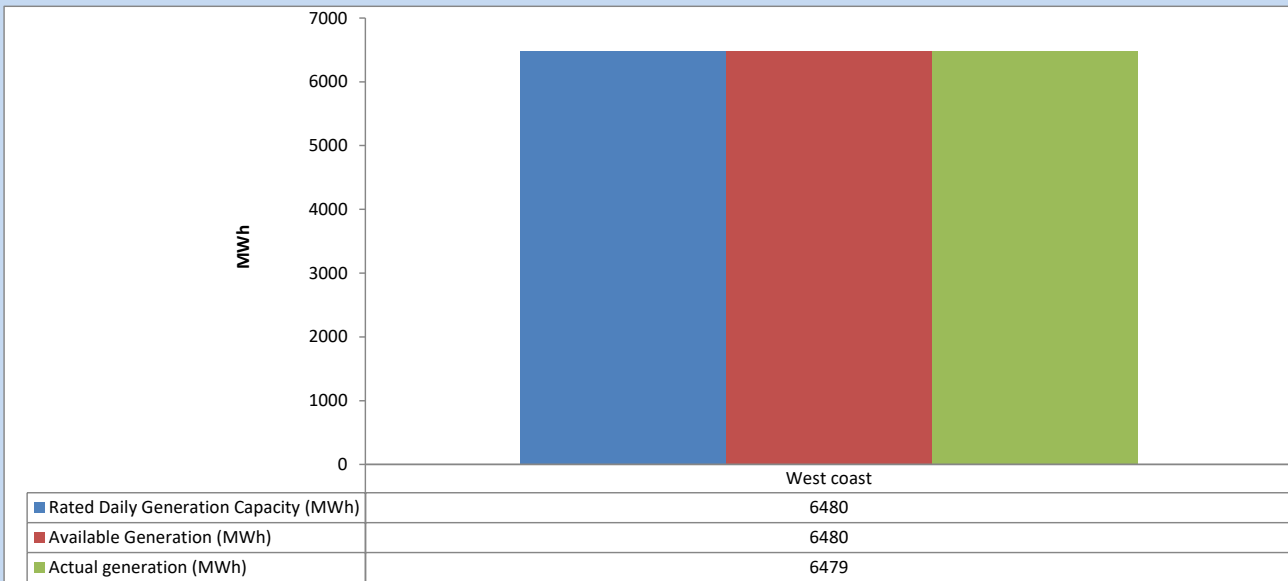


Plant availability is recorded at 6.00 am on

July 22, 2023

5. IPP owned Thermal Plant Dispatch

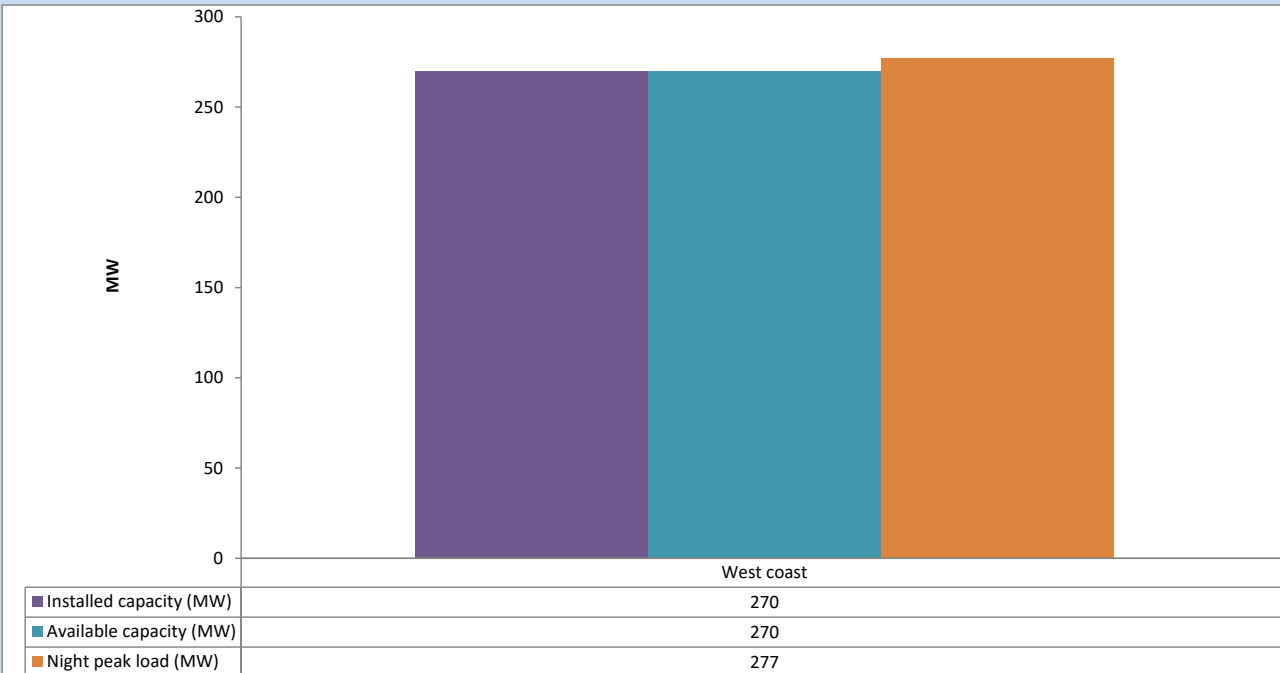
July 21, 2023



Available Generation is estimated based on plant availability at 6.00am on

July 22, 2023

6. IPP owned Thermal Plant Loading at the Night Peak

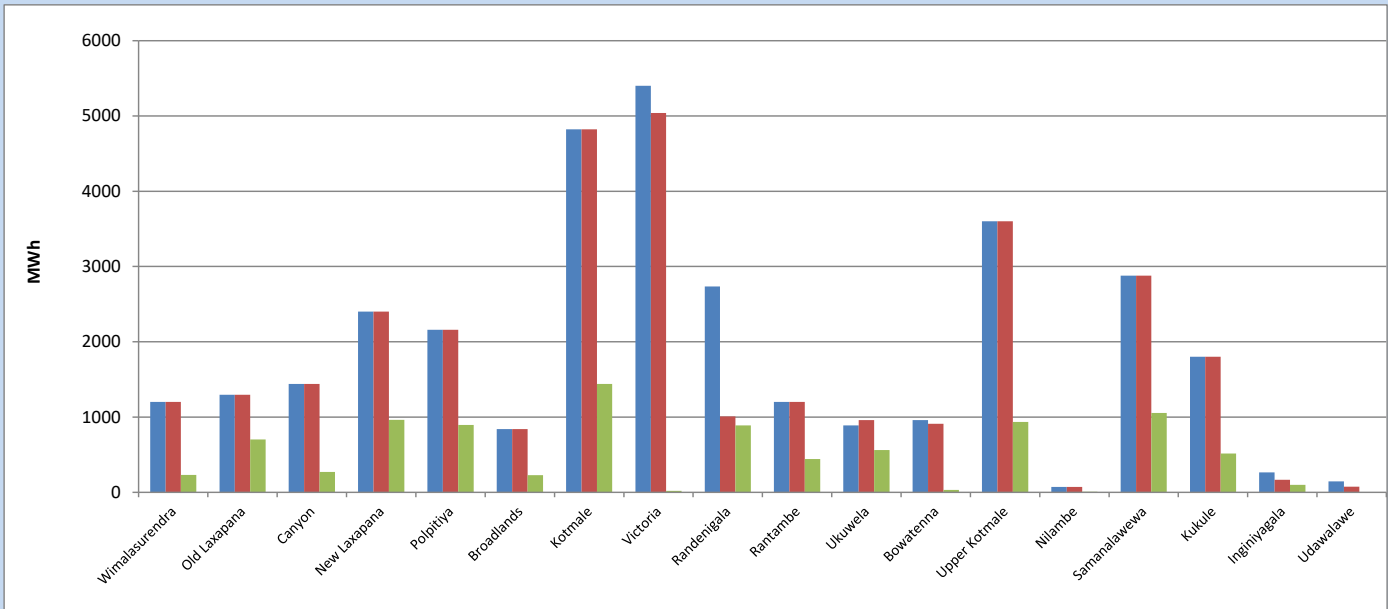


Plant availability is recorded at 6.00 am on

July 22, 2023

7. Major Hydro Plant Dispatch

July 21, 2023

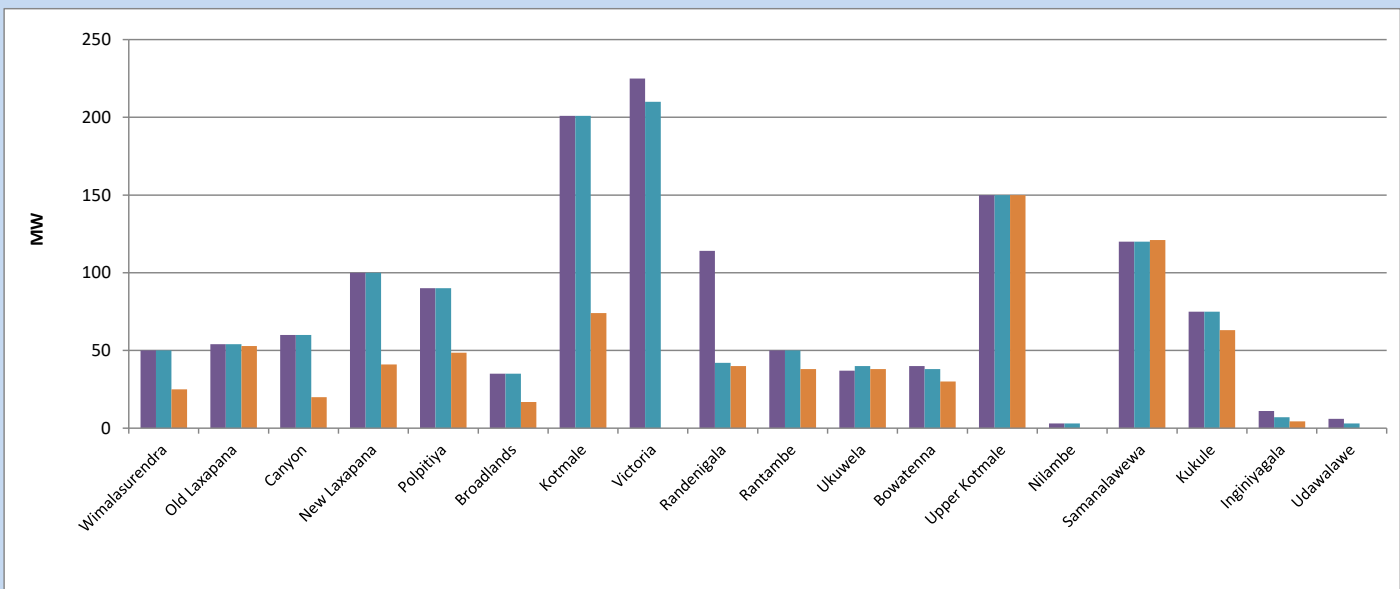


Available Generation is estimated based on plant availability at 6.00am on
Broadlands power plant is operating in the Commissioning Stage

July 22, 2023

8. Major Hydro Plant Loading at Night Peak

July 21, 2023



Plant availability is recorded at 6.00 am on
Broadlands power plant is operating in the Commissioning Stage

July 22, 2023

9. Summary of Major Plant performance

Table 04

Plant	Installed Capacity	Plant Availability	Night peak Load	Plant Dispatch
	(MW)	(MW)	(MW)	(MWh)
Wimalasurendra	50	50	25	231
Old Laxapana	54	54	53	703
Canyon	60	60	20	271
New Laxapana	100	100	41	963
Polpitiya	90	90	49	894
Broadlands	35	35	17	228
Kotmale	201	201	74	1,440
Victoria	225	210	0	19
Randenigala	114	42	40	888
Rantambe	50	50	38	441
Ukuwela	37	40	38	562
Bowatenna	40	38	30	32
Upper Kotmale	150	150	150	935
Nilambe	3	3	0	8
Samanalawewa	120	120	121	1,054
Kukule	75	75	63	516
Inginiyagala	11	7	4	99
Udawalawe	6	3	0	0
Puttalam Coal I	270	0	0	0
Puttalam Coal II	270	270	270	6,478
Puttalam Coal III	270	198	197	4,735
KPS Small GTs	64	0	0	0
KPS GT 7	115	0	0	0
KCCP	161	153	149	3,547
Sapugaskanda A	70	50	34	900
Sapugaskanda B	70	63	54	1,310
Uthura Janani	26	16	23	414
Barge CEB	60	60	61	1,090
CEB-Hambantota	30	21	20	147
CEB-Mathugama	20	13	13	79
ACE Matara	24	0	0	0
Asia Power	50	0	0	0
KCCPS -2	163	155	154	2,131
West Coast	270	270	277	6,479
Nothern Power	36	0	0	0
ACE Embilipitiya	93	0	0	0
Total	3,483	2,597	2,199	42,402

Plant availability is the availability recorded at 6 am on

July 22, 2023

10. Contribution to the Night Peak in MW

July 21, 2023

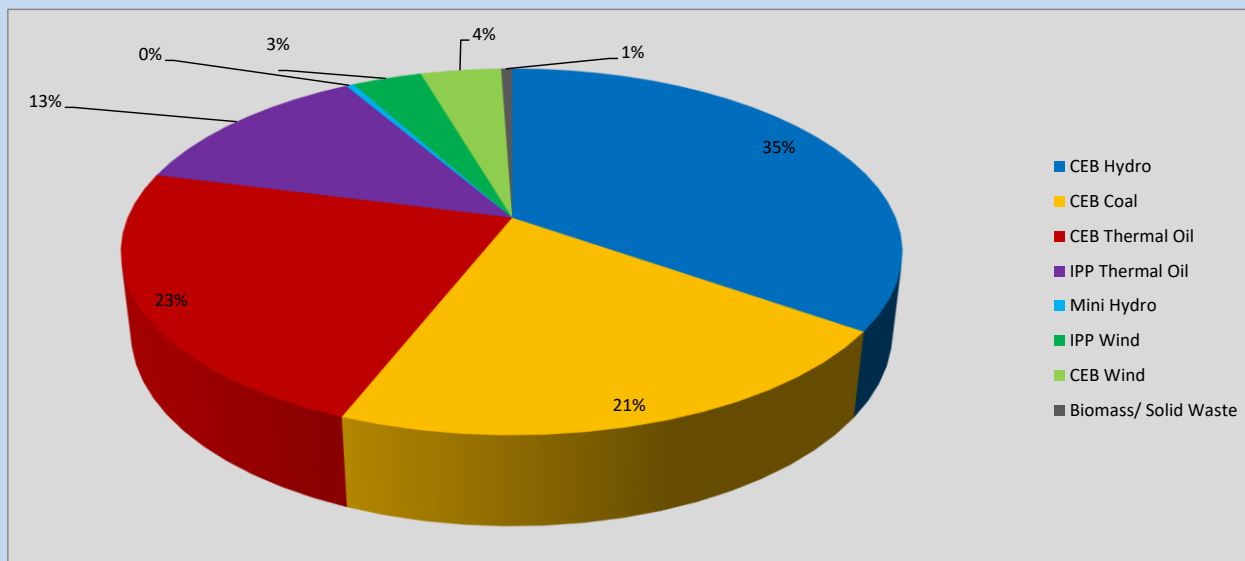


Table 05

CEB Hydro	765	MW
CEB Coal	467	MW
CEB Thermal Oil	508	MW
IPP Thermal Oil	277	MW
Mini Hydro (Telemetered)	9	MW
IPP Wind	75.8	MW
CEB Wind	87.7	MW
Biomass/ Solid Waste	12	MW

Recorded Peak Demand Data

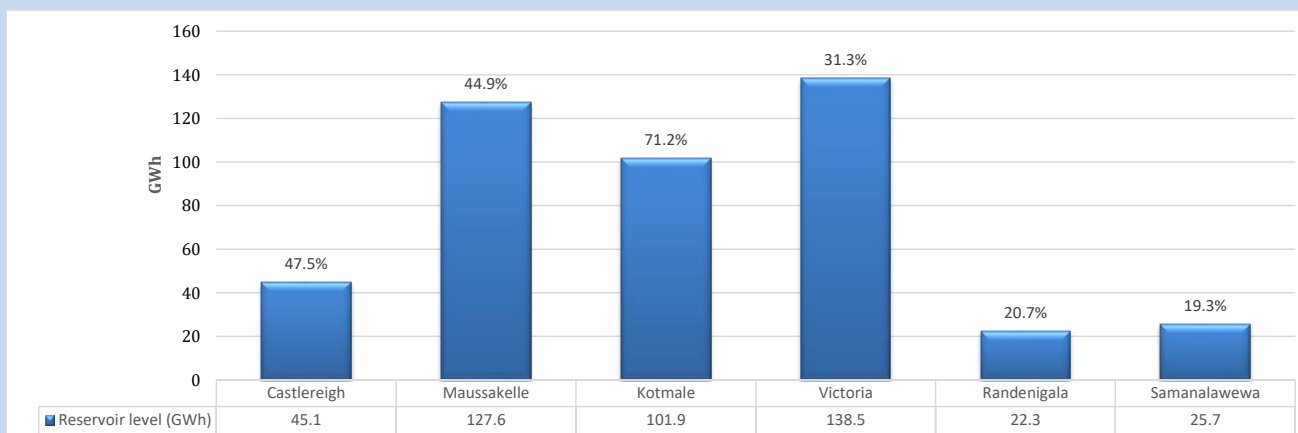
Table 06

Night Peak*	2,201	MW
Day Peak Maximum Demand	1,923	MW
Day Peak Minimum Demand	1,587	MW
Off Peak Minimum Demand	1,296	MW

Above figures are excluding contribution from roof top solar, non telemetered solar and mini hydro plants

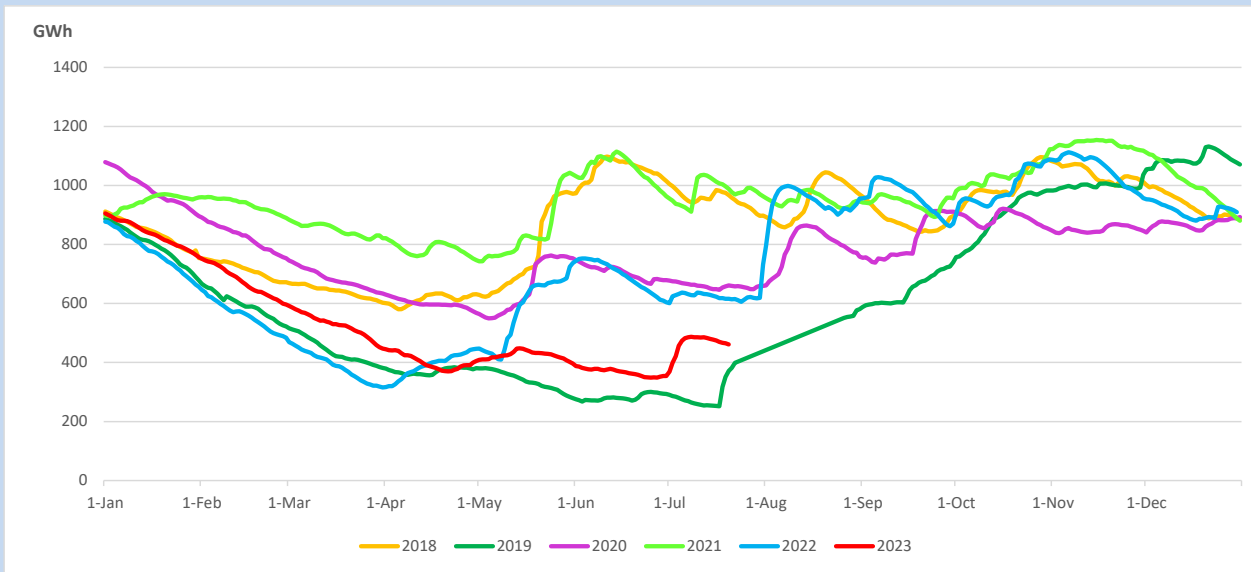
Reservoir Levels -

as at 06.00 Hr on July 22, 2023

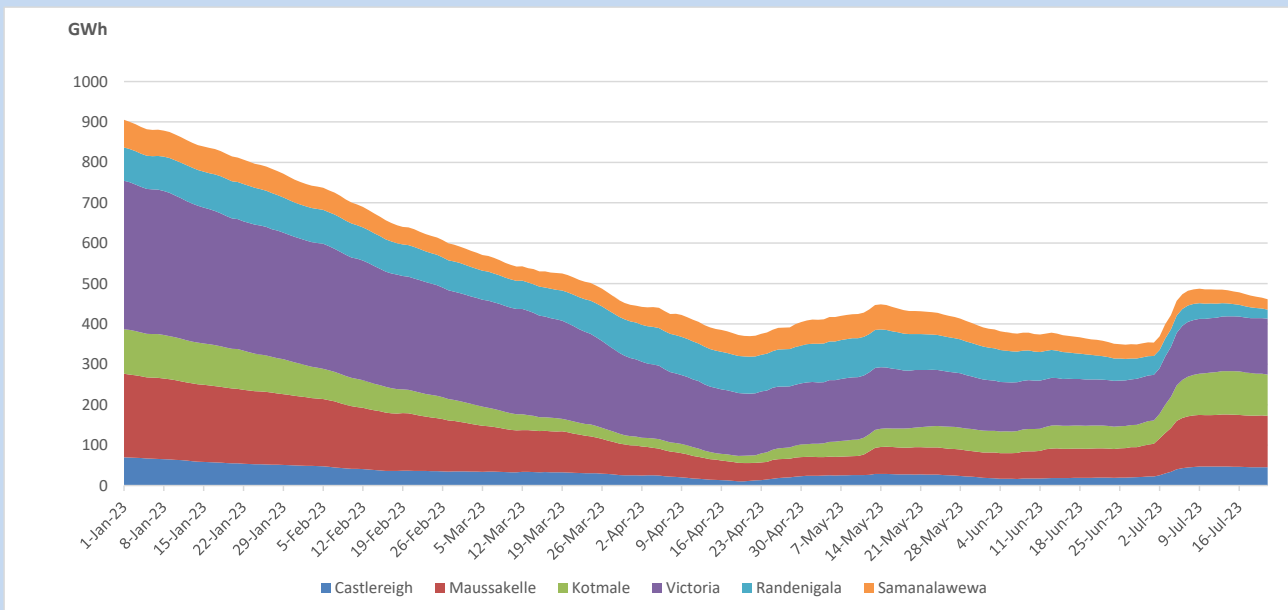


Total Reservoir Level 461.1 GWh
 % of Total capacity 38.2%

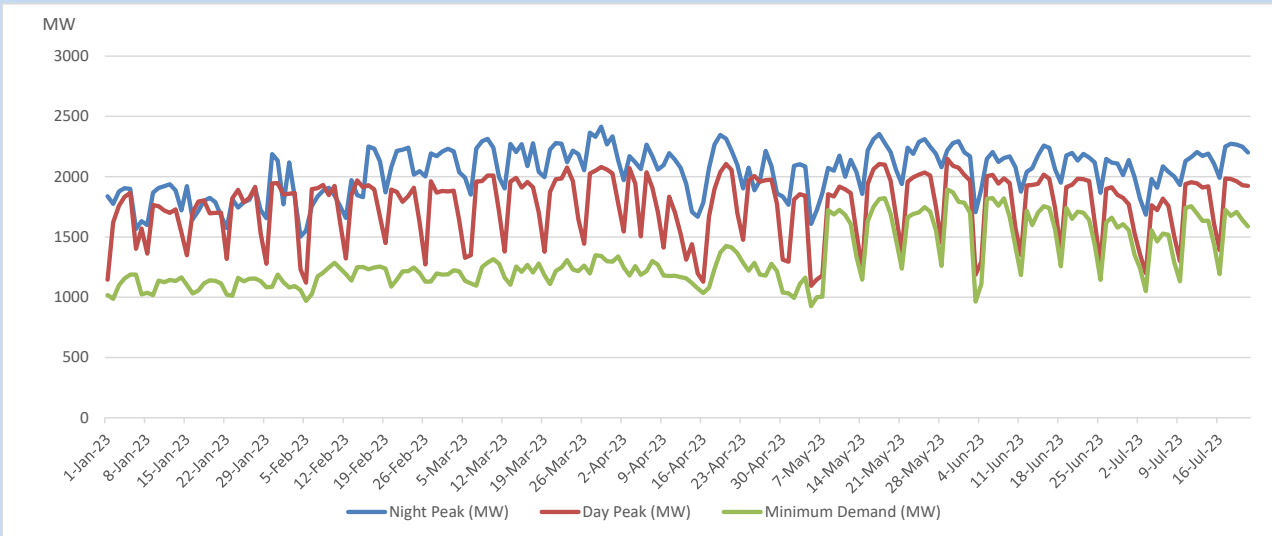
11. Comparison of Total Reservoir Storage Levels with Past Years



12. Variation of Major Hydro Reservoir Levels in the current year (GWh)



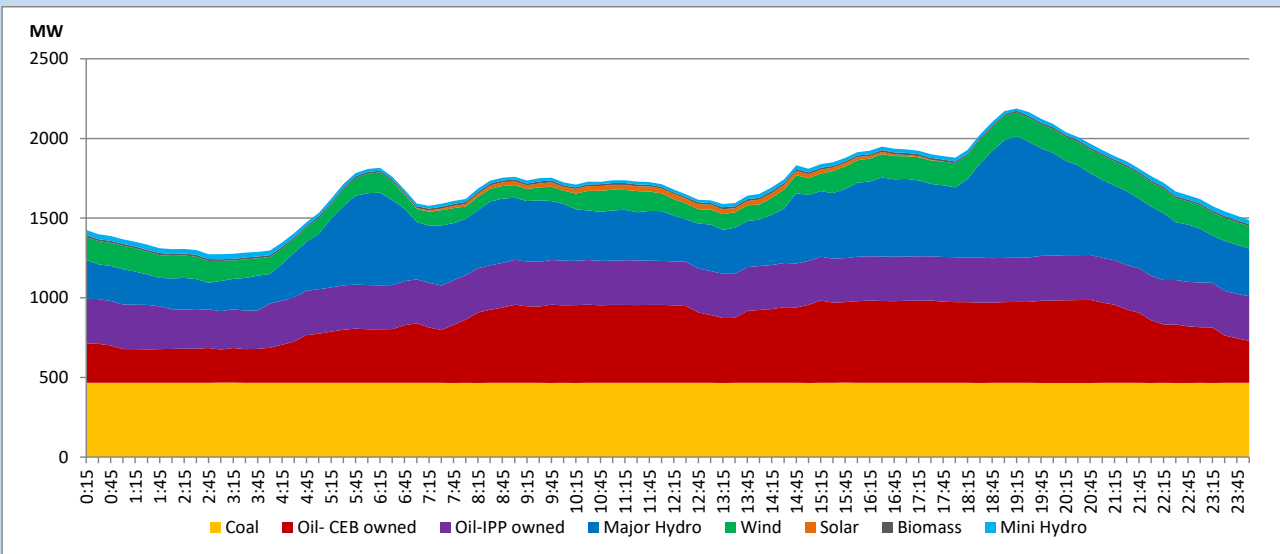
13. Variation of Demand during the current year



The above figures are excluding contribution from roof top solar, non telemetered solar and mini hydro plants

14. Daily Load Curve

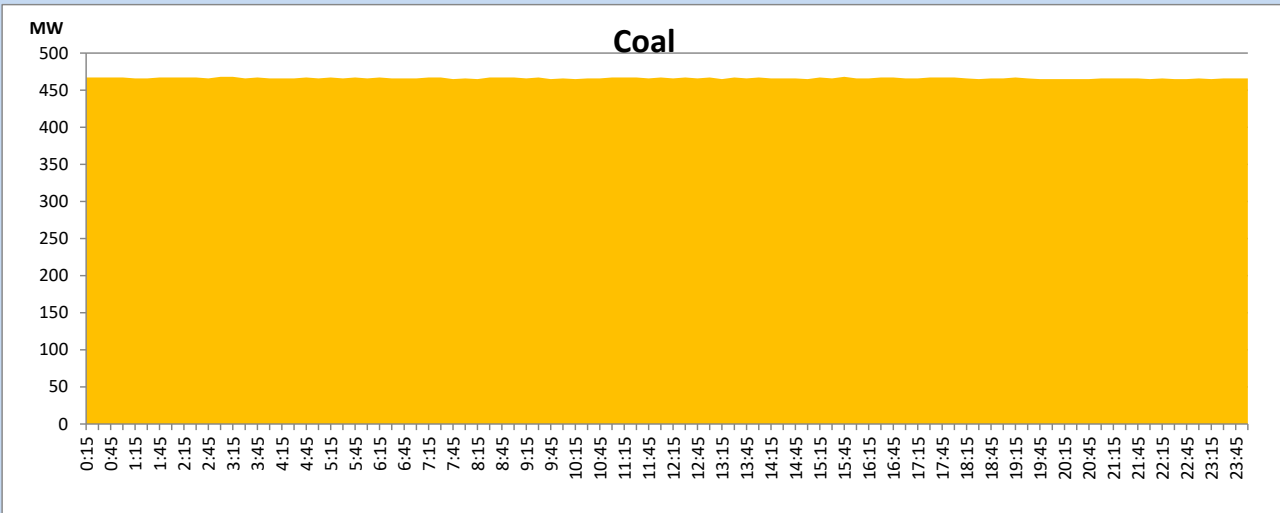
July 21, 2023



Solar and wind data is based on Telemetered Power Stations only

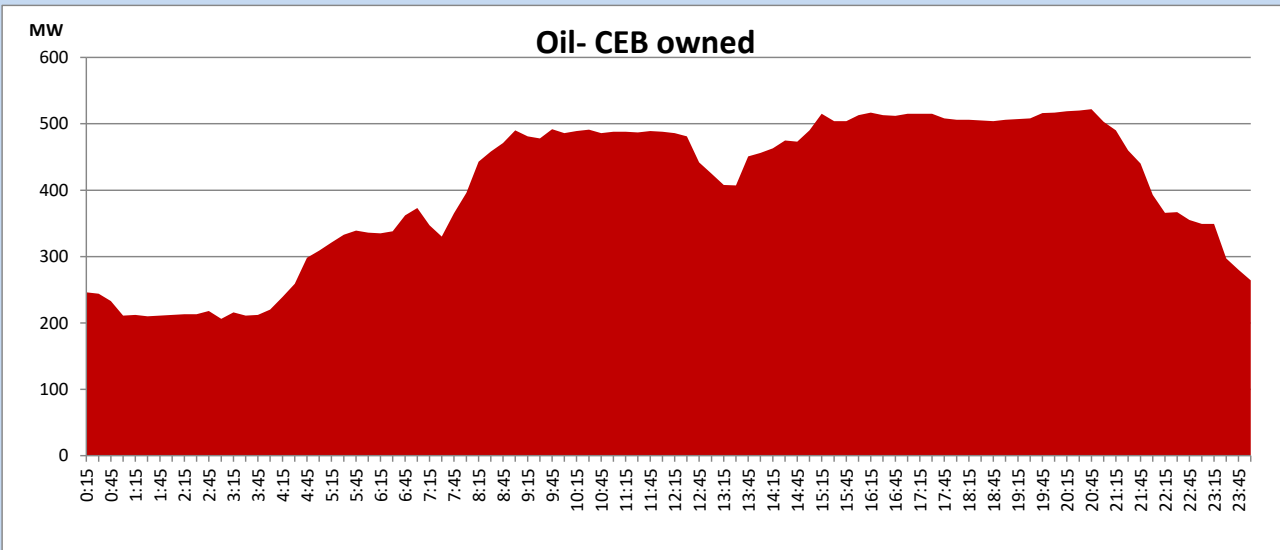
Coal Generation during

July 21, 2023



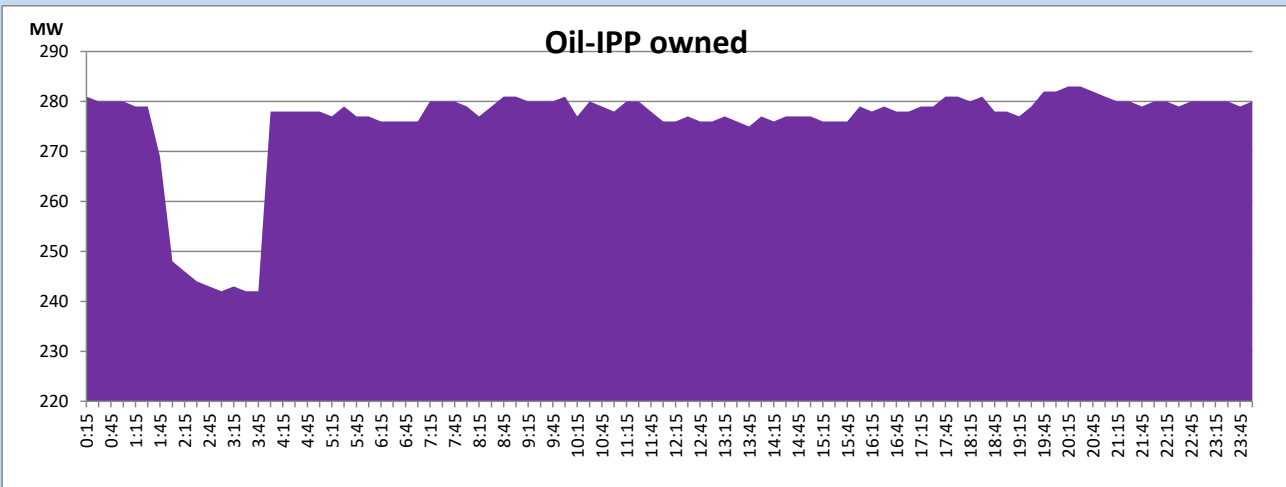
CEB Oil Plant Generation during

July 21, 2023



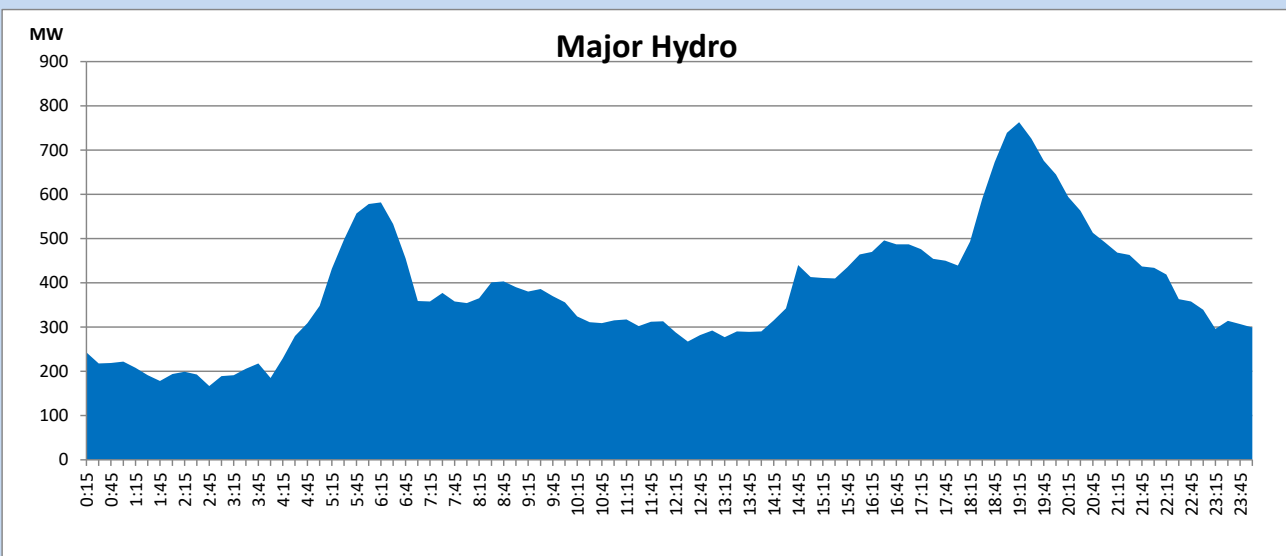
IPP Oil Plant Generation during

July 21, 2023



Major Hydro Generation during

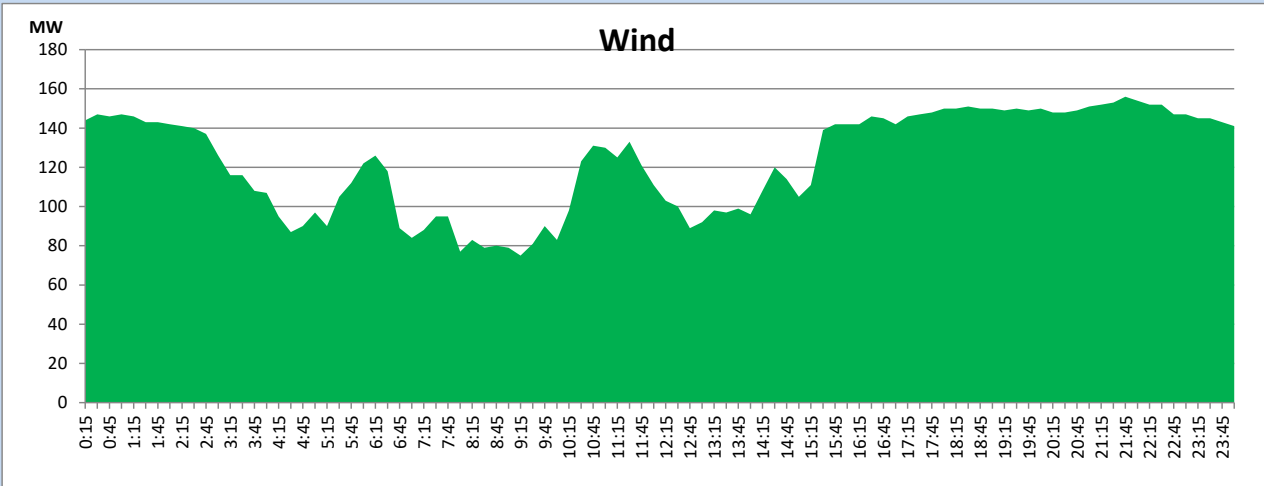
July 21, 2023



Wind Generation during

July 21, 2023

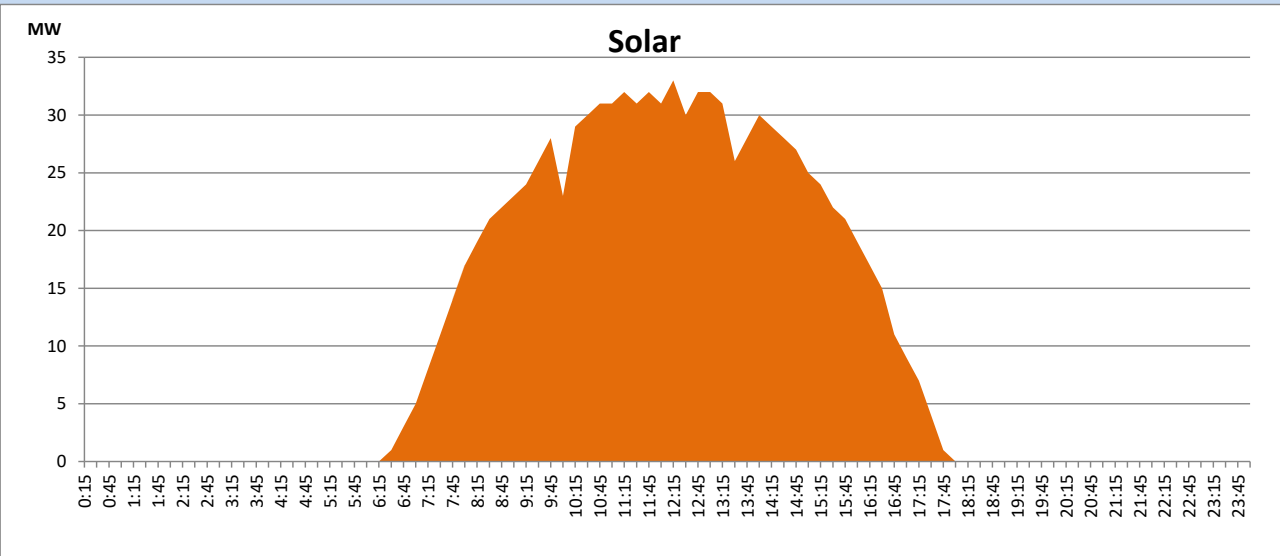
Based on Telemetered Power Stations only



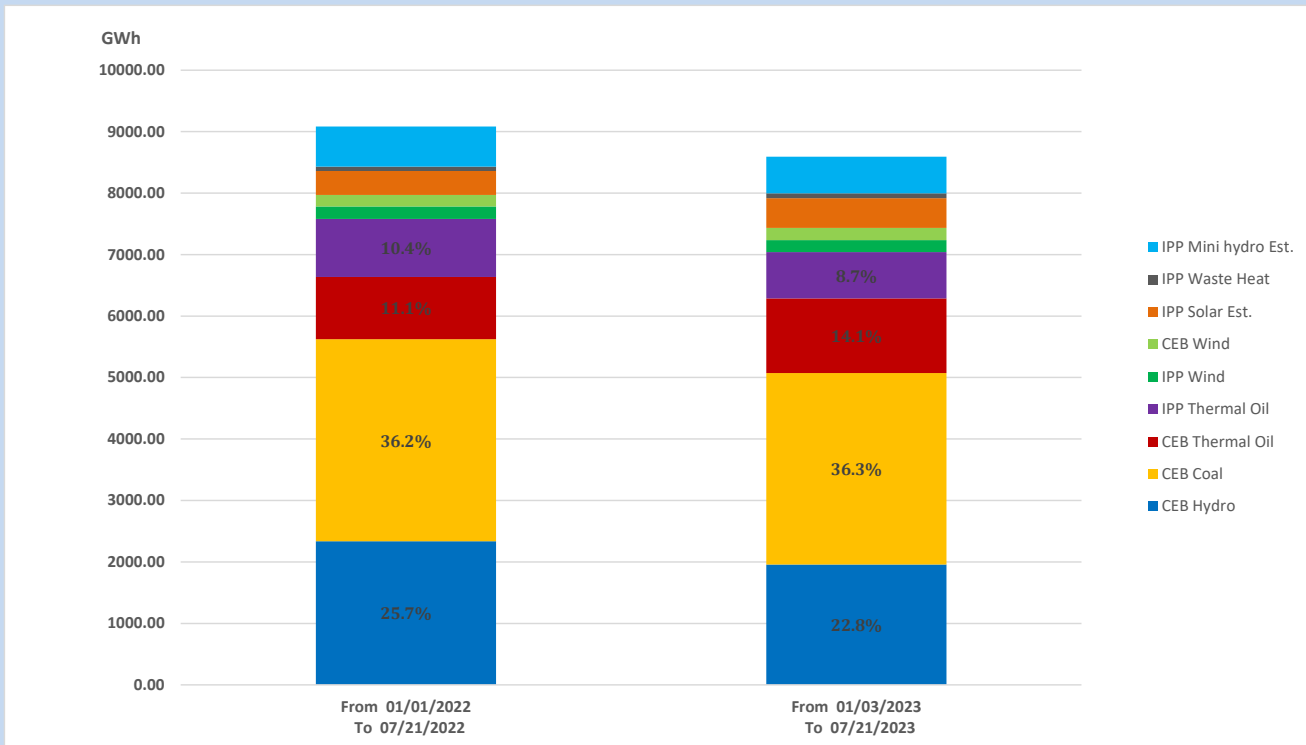
Solar Generation during

July 21, 2023

Based on Telemetered Power Stations only



15. Cumulative Dispatch Comparison with Last Year



Cumulative dispatch

From 01/01/2022 To 07/21/2022

9082 GWh

From 01/01/2023 To 07/21/2023

8594 GWh

The above figures are including contribution from roof top solar, non telemetered solar and mini hydro plants

Thermal Plant Fuel types

Power Station	Primary Fuel
CEB Thermal	
Sapugaskanda 1	Heavy Fuel
Sapugaskanda 2	Heavy Fuel
Kelanitissa Small Gas Turbines	Auto Diesel
GT 7 - Kelanitissa	Auto Diesel
Kelanitissa CCY	Naphtha or Diesel
Lakvijaya 1	Coal
Lakvijaya 2	Coal
Lakvijaya 3	Coal
Uthuru Janani	Heavy Fuel
Barge CEB	Heavy Fuel
KCCPS -2	Auto Diesel

Power Station	Primary Fuel
Private Thermal	
West Coast	Auto Diesel / Heavy Fuel

Major Incidents reported during the day

July 21, 2023

- 1) Beliatta - Embilipitiya 132kV cct tripped from Embilipitiya end and tripped & A/R from Beliatta end due to the operation of distance protection at 11:59hrs. The cct was normalized at 12:09hrs.
- 2) Habarana - Ukuwela 132kV cct tripped & A/R from both ends at 13:39hrs due to the operation of distance protection and again the cct was tripped from both ends at 13:53hrs due to the operation of distance protection. The cct was normalized at 14:02hrs.
- 3) New Habarana 220/132/33kV T/F 02 which was tripped on 24/06/2023, was restored at 19:38hrs.