

Generation and Reservoirs Statistics

July 20, 2023



PUBLIC UTILITIES COMMISSION OF SRI LANKA

1. Daily Generation Mix in MWh

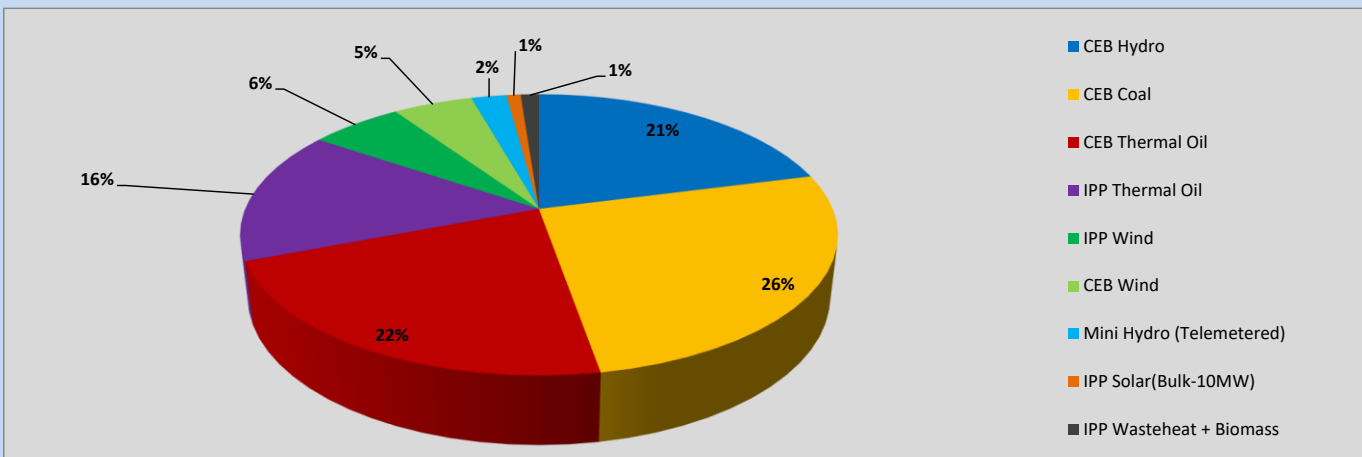


Table 01

CEB Hydro	8,956	MWh
CEB Coal	11,223	MWh
CEB Thermal Oil	9,353	MWh
IPP Thermal Oil	6,544	MWh
IPP Wind	2,557	MWh
CEB Wind	2,204	MWh
Mini Hydro (Telemetered)	976	MWh
IPP Solar (Bulk)	391	MWh
IPP Wasteheat + Biomass	504	MWh
Total Generation (Excluding estimated figures)	42,708	MWh
* Estimated unserved energy	0	MWh
* Estimated Mini Hydro (Non telemetered)	2534	MWh
* Estimated IPP Solar PV (Bulk 1-10MW)	304	MWh
* Estimated Solar Roof Top PV	1650	MWh
Total Generation (Including estimated figures)	47,196	MWh

* Estimated figures of CEB generation report

2. Cumulative Dispatch

Following data excludes the contribution from roof top solar, non telemetered solar and mini hydro plants

Table 02 - Current Month

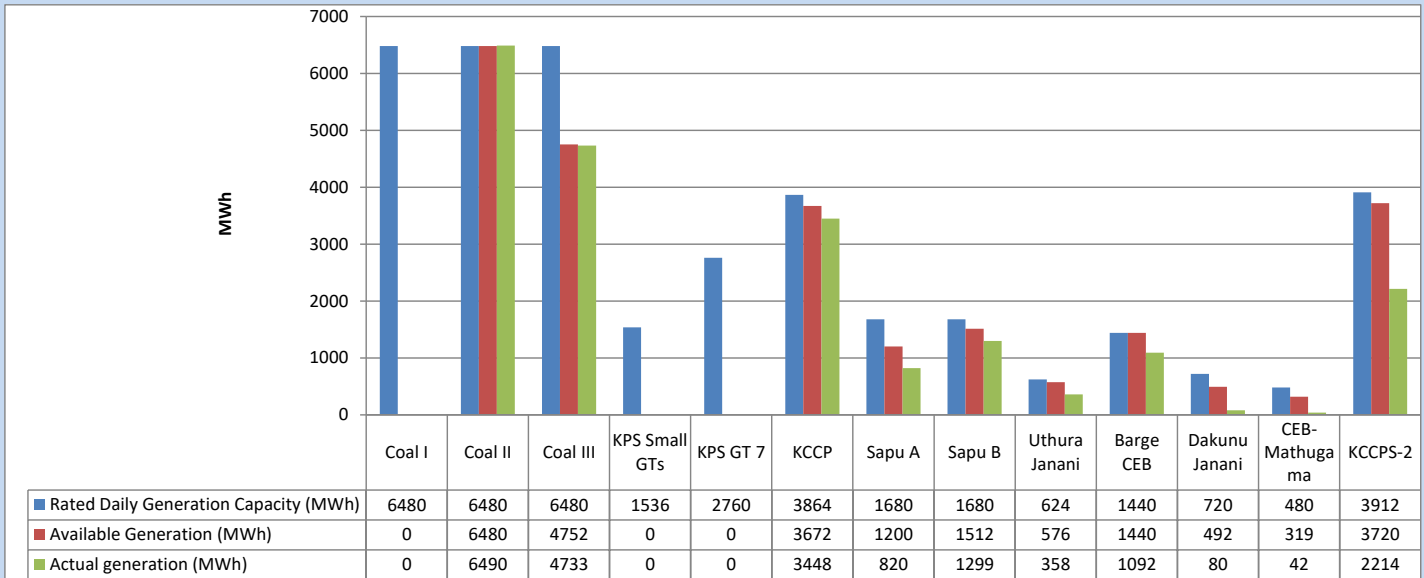
Category	Dispatch (GWh)	
CEB Hydro	214	27.84%
CEB Coal	227	29.43%
CEB Thermal Oil	123	15.98%
IPP Thermal	91	11.85%
SPP Wind	38	4.95%
CEB Wind	35	4.51%
Mini Hydro (Telemetered)	28	3.60%
IPP Solar(Bulk-10MW)	6	0.83%
IPP Wasteheat + BMP	8	1.00%
Total	770	

Table 03 - Current Year

Category	Dispatch (GWh)	
CEB Hydro	1,952	25.28%
CEB Coal	3,110	40.26%
CEB Thermal Oil	1,207	15.62%
IPP Thermal	745	9.65%
SPP Wind	189	2.45%
CEB Wind	199	2.57%
Mini Hydro (Telemetered)	194	2.51%
IPP Solar(Bulk-10MW)	59	0.77%
IPP Wasteheat	68	0.88%
Total	7,723	

3. CEB owned Thermal Plant Dispatch

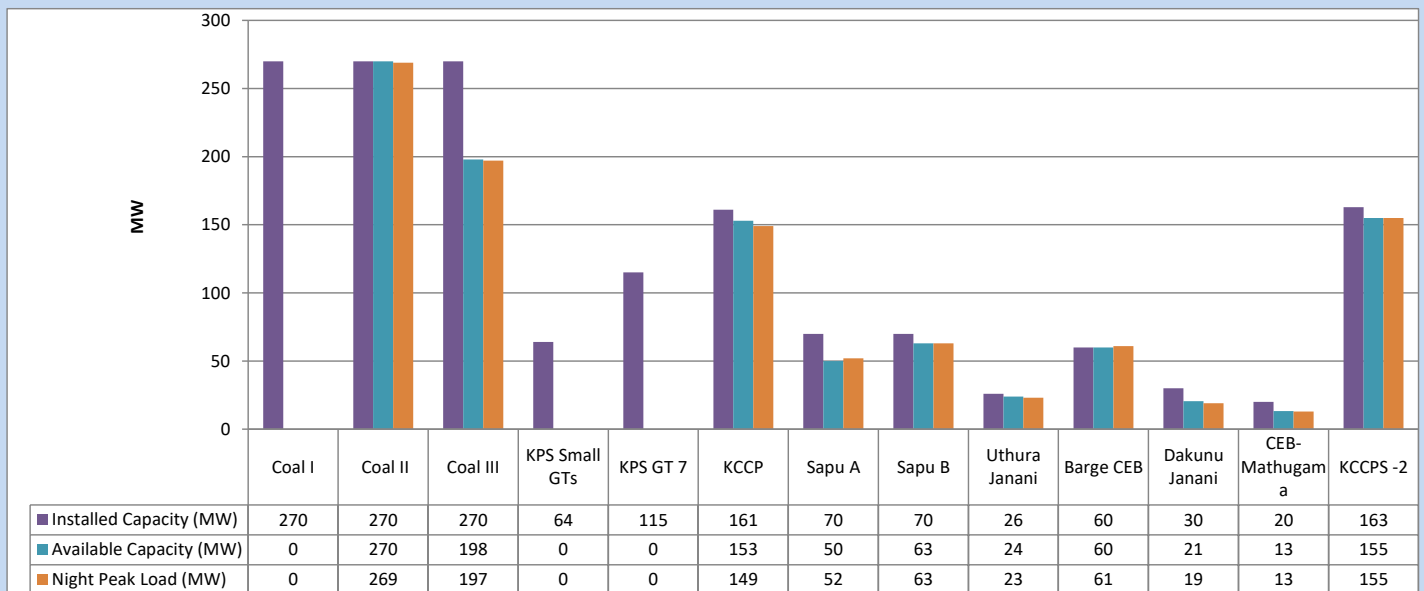
July 20, 2023



Available Generation is estimated based on plant availability at 6.00am on

July 21, 2023

4. CEB owned Thermal Plant Loading at the Night Peak

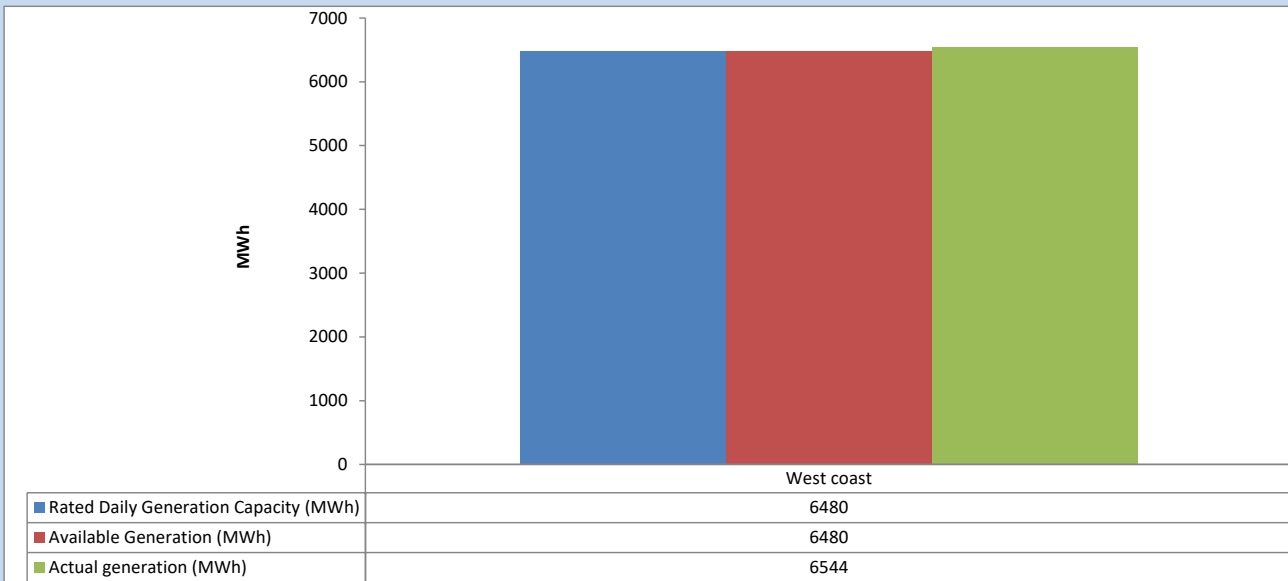


Plant availability is recorded at 6.00 am on

July 21, 2023

5. IPP owned Thermal Plant Dispatch

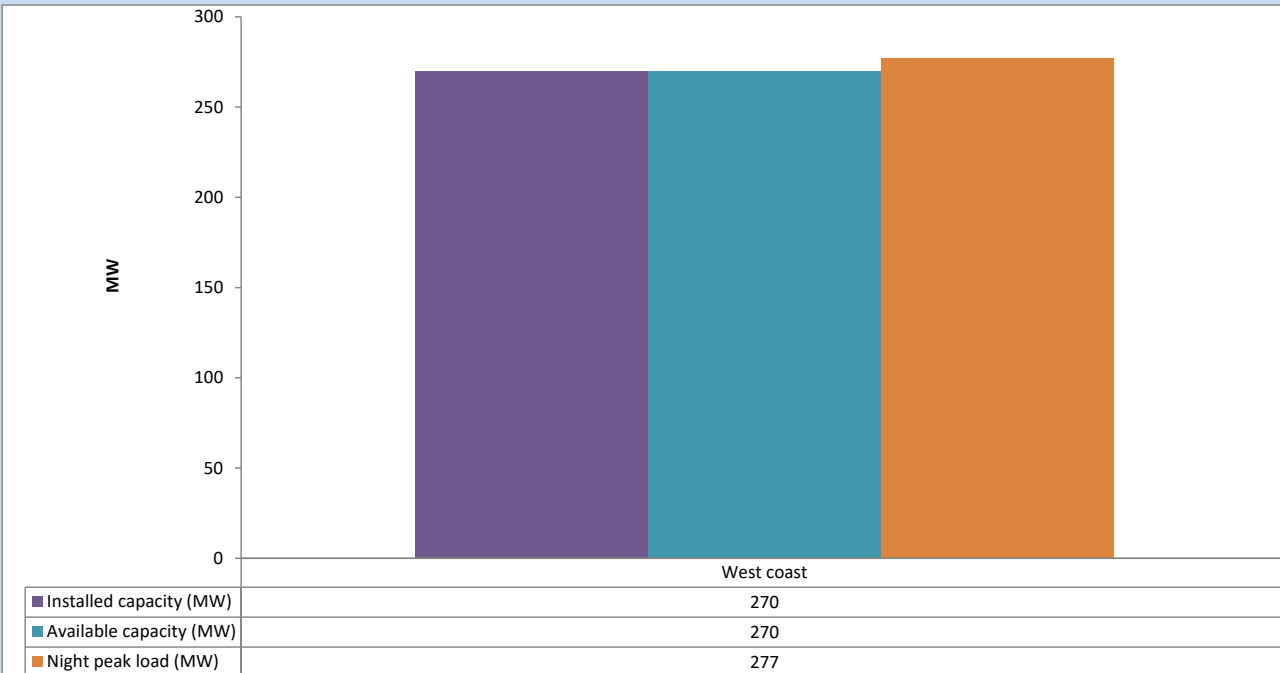
July 20, 2023



Available Generation is estimated based on plant availability at 6.00am on

July 21, 2023

6. IPP owned Thermal Plant Loading at the Night Peak

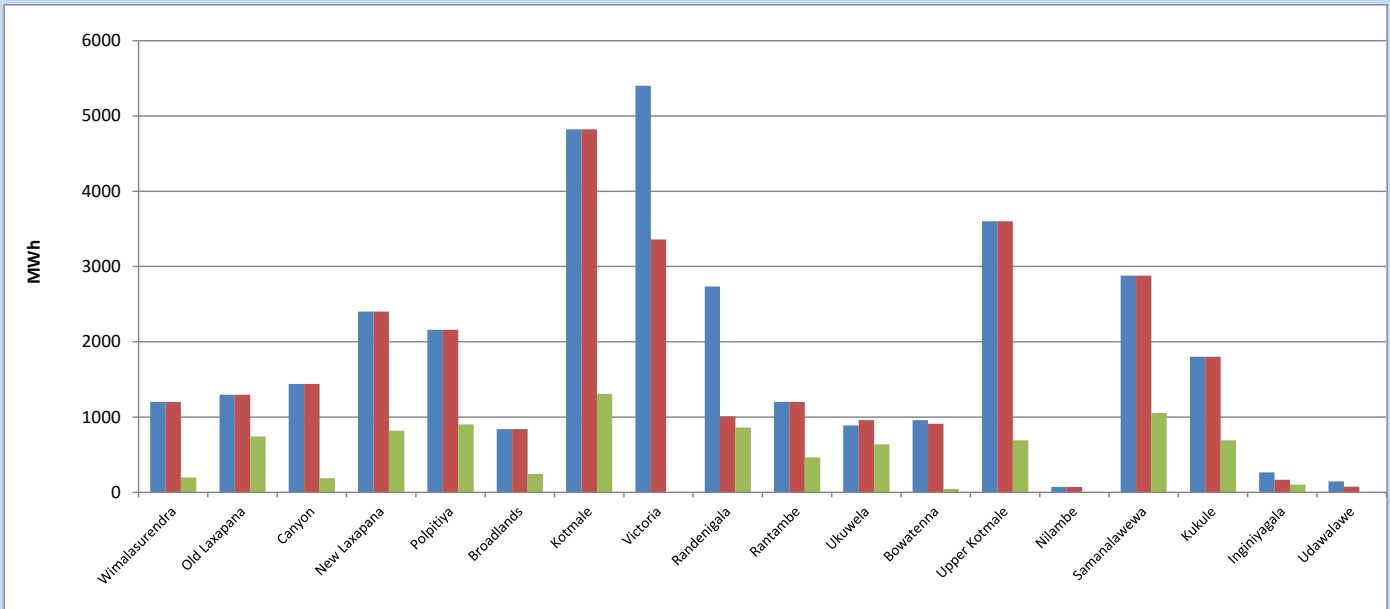


Plant availability is recorded at 6.00 am on

July 21, 2023

7. Major Hydro Plant Dispatch

July 20, 2023

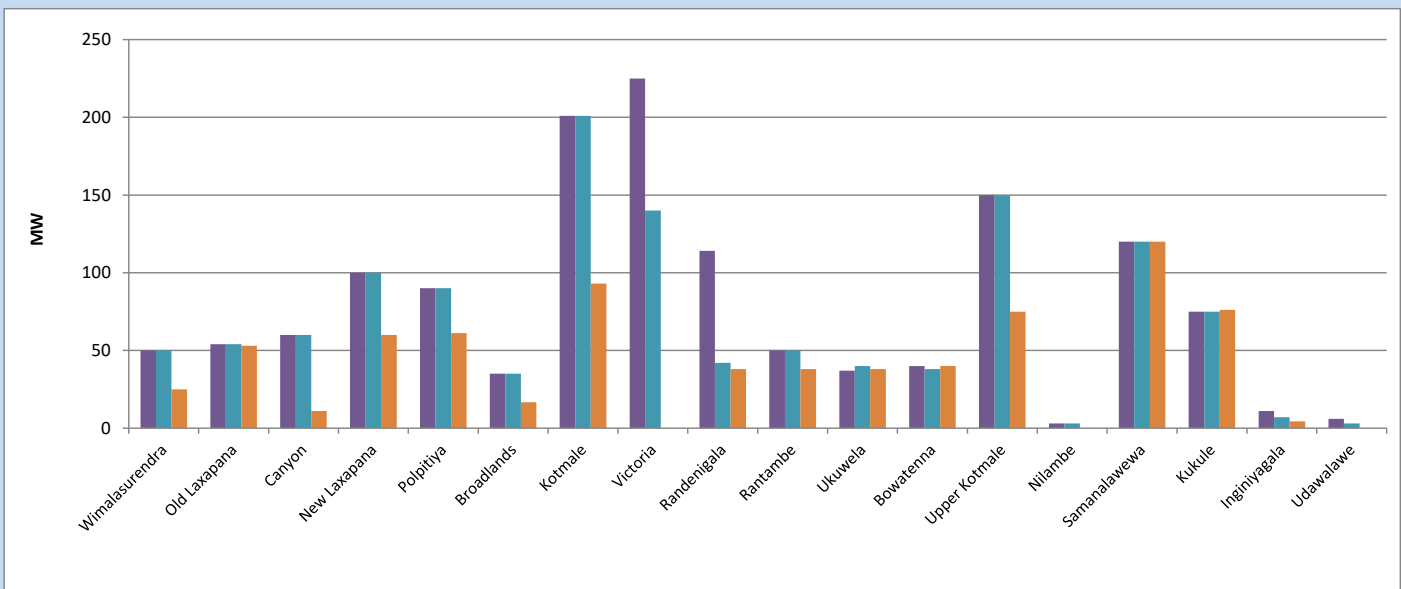


Available Generation is estimated based on plant availability at 6.00am on
Broadlands power plant is operating in the Commissioning Stage

July 21, 2023

8. Major Hydro Plant Loading at Night Peak

July 20, 2023



Plant availability is recorded at 6.00 am on
Broadlands power plant is operating in the Commissioning Stage

July 21, 2023

9. Summary of Major Plant performance

Table 04

Plant	Installed Capacity	Plant Availability	Night peak Load	Plant Dispatch
	(MW)	(MW)	(MW)	(MWh)
Wimalasurendra	50	50	25	196
Old Laxapana	54	54	53	742
Canyon	60	60	11	189
New Laxapana	100	100	60	820
Polpitiya	90	90	61	902
Broadlands	35	35	17	245
Kotmale	201	201	93	1,310
Victoria	225	140	0	0
Randenigala	114	42	38	861
Rantambe	50	50	38	464
Ukuwela	37	40	38	638
Bowatenna	40	38	40	45
Upper Kotmale	150	150	75	689
Nilambe	3	3	0	6
Samanalawewa	120	120	120	1,056
Kukule	75	75	76	690
Inginiyagala	11	7	4	103
Udawalawe	6	3	0	0
Puttalam Coal I	270	0	0	0
Puttalam Coal II	270	270	269	6,490
Puttalam Coal III	270	198	197	4,733
KPS Small GTs	64	0	0	0
KPS GT 7	115	0	0	0
KCCP	161	153	149	3,448
Sapugaskanda A	70	50	52	820
Sapugaskanda B	70	63	63	1,299
Uthura Janani	26	24	23	358
Barge CEB	60	60	61	1,092
CEB-Hambantota	30	21	19	80
CEB-Mathugama	20	13	13	42
ACE Matara	24	0	0	0
Asia Power	50	0	0	0
KCCPS -2	163	155	155	2,214
West Coast	270	270	277	6,544
Nothern Power	36	0	0	0
ACE Embilipitiya	93	0	0	0
Total	3,483	2,535	2,247	42,708

Plant availability is the availability recorded at 6 am on

July 21, 2023

10. Contribution to the Night Peak in MW

July 20, 2023

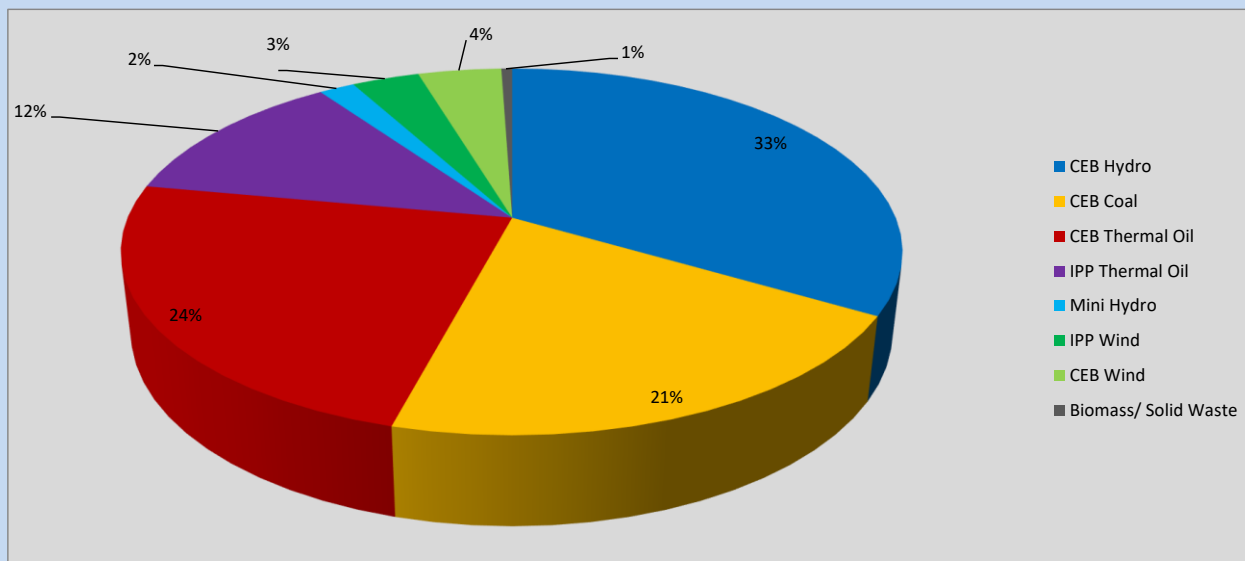


Table 05

CEB Hydro	751 MW
CEB Coal	466 MW
CEB Thermal Oil	535 MW
IPP Thermal Oil	277 MW
Mini Hydro (Telemetered)	40 MW
IPP Wind	74.9 MW
CEB Wind	92.6 MW
Biomass/ Solid Waste	12 MW

Recorded Peak Demand Data

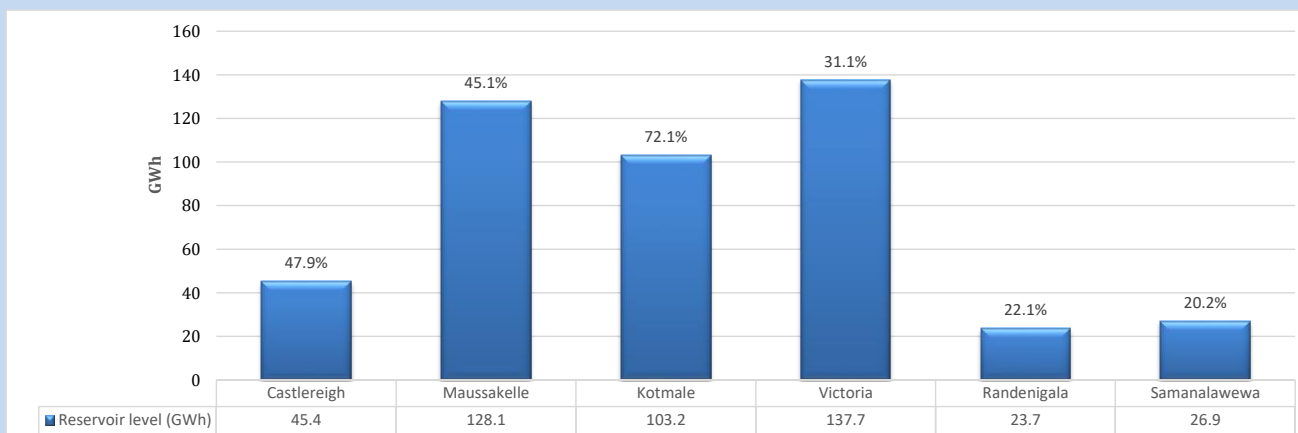
Table 06

Night Peak*	2,249 MW
Day Peak Maximum Demand	1,929 MW
Day Peak Minimum Demand	1,640 MW
Off Peak Minimum Demand	1,315 MW

Above figures are excluding contribution from roof top solar, non telemetered solar and mini hydro plants

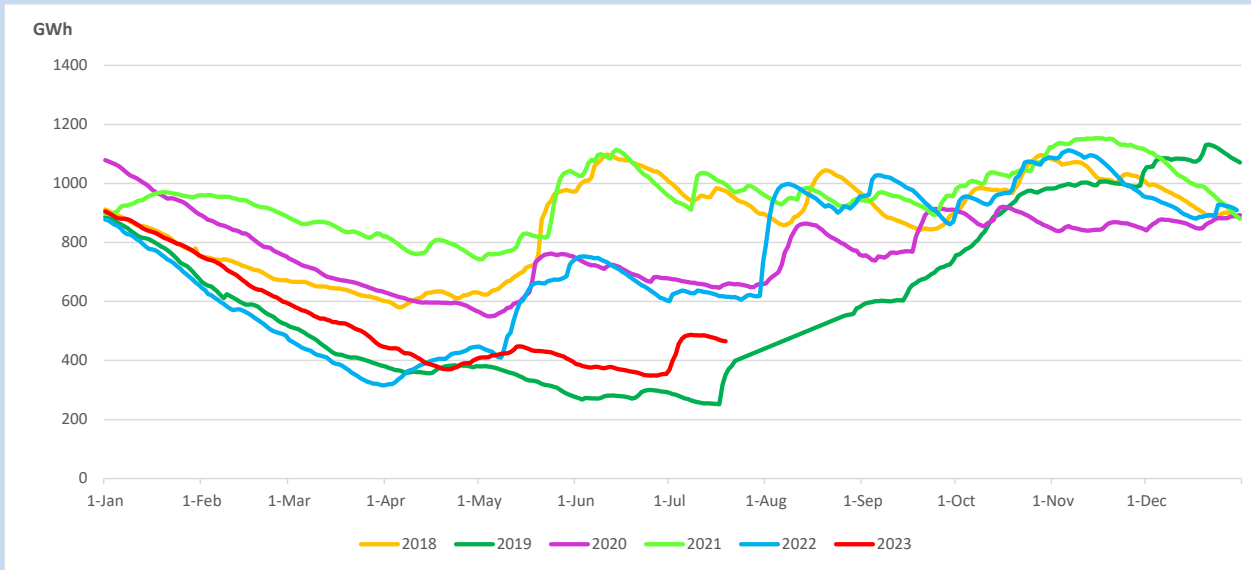
Reservoir Levels -

as at 06.00 Hr on July 21, 2023

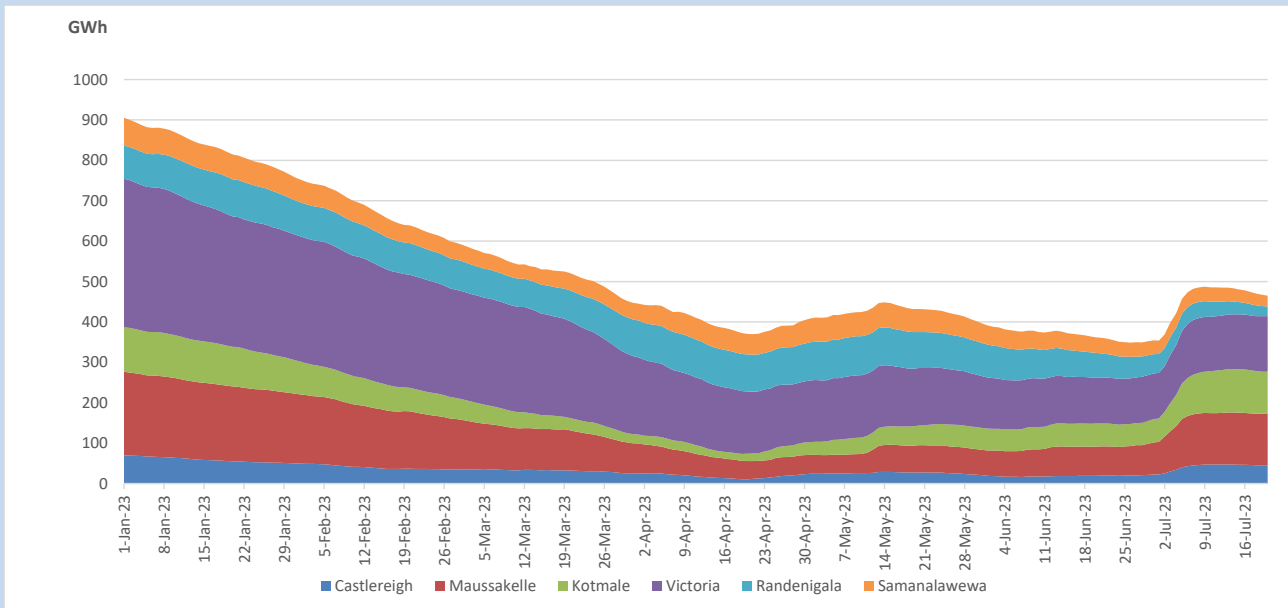


Total Reservoir Level 465 GWh
 % of Total capacity 38.6%

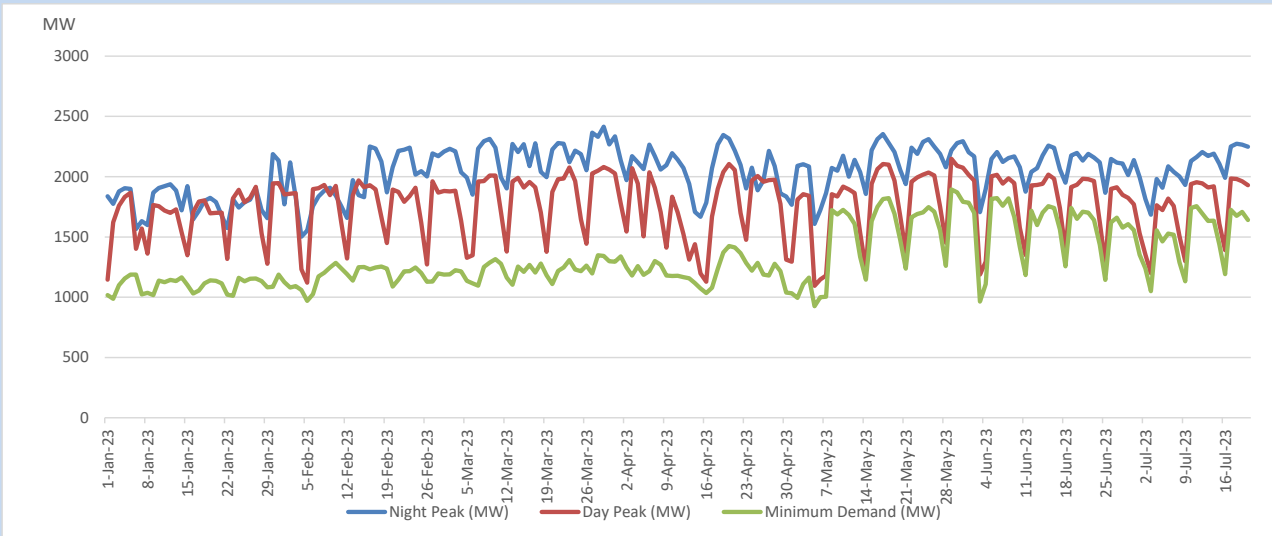
11. Comparison of Total Reservoir Storage Levels with Past Years



12. Variation of Major Hydro Reservoir Levels in the current year (GWh)



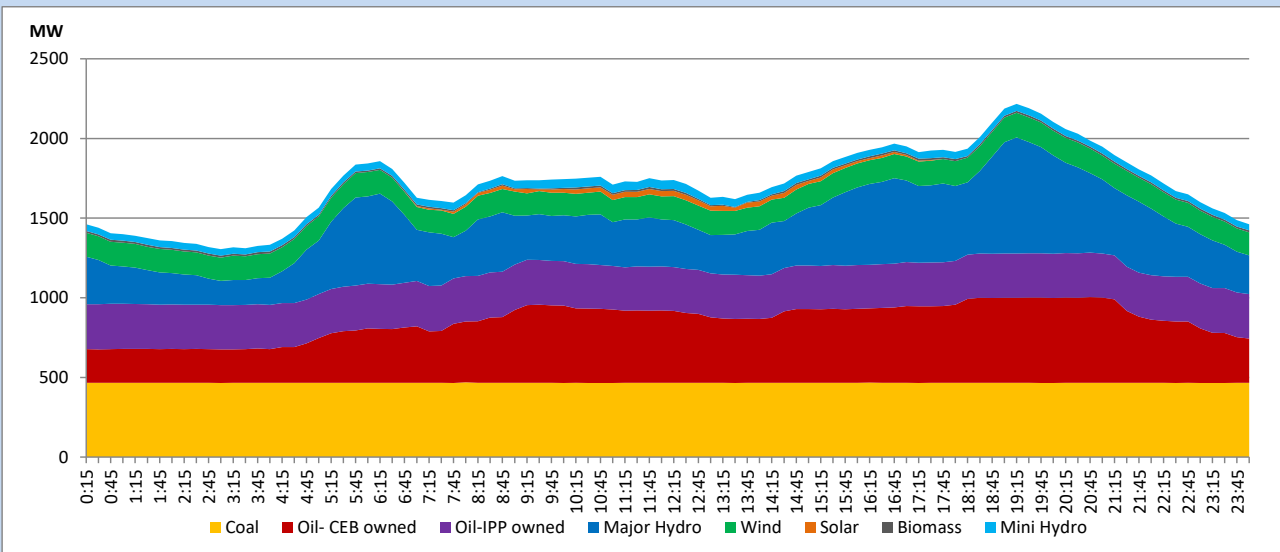
13. Variation of Demand during the current year



The above figures are excluding contribution from roof top solar, non telemetered solar and mini hydro plants

14. Daily Load Curve

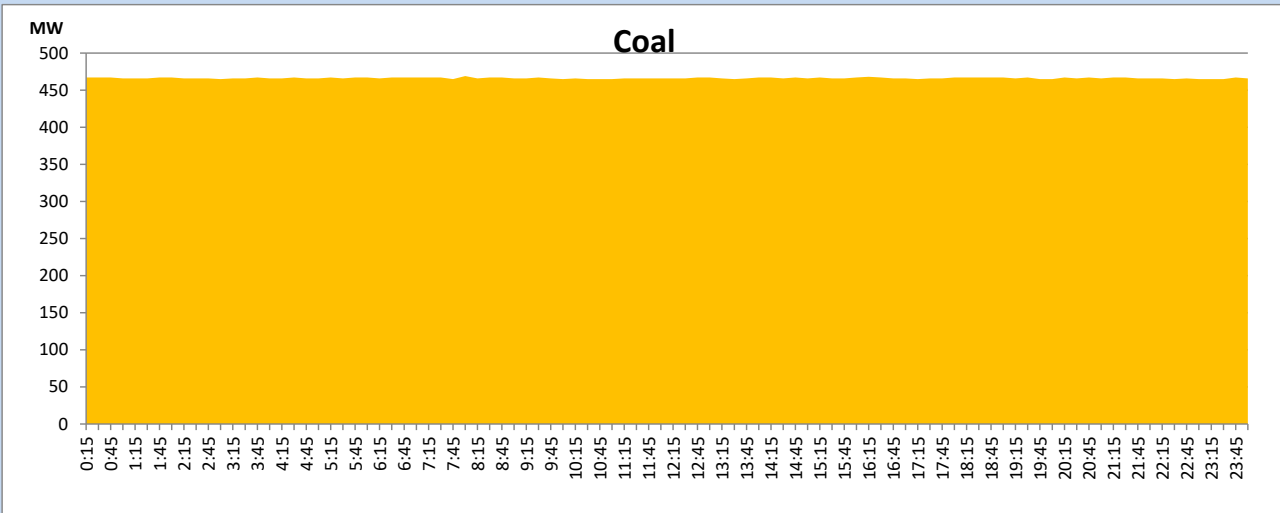
July 20, 2023



Solar and wind data is based on Telemetered Power Stations only

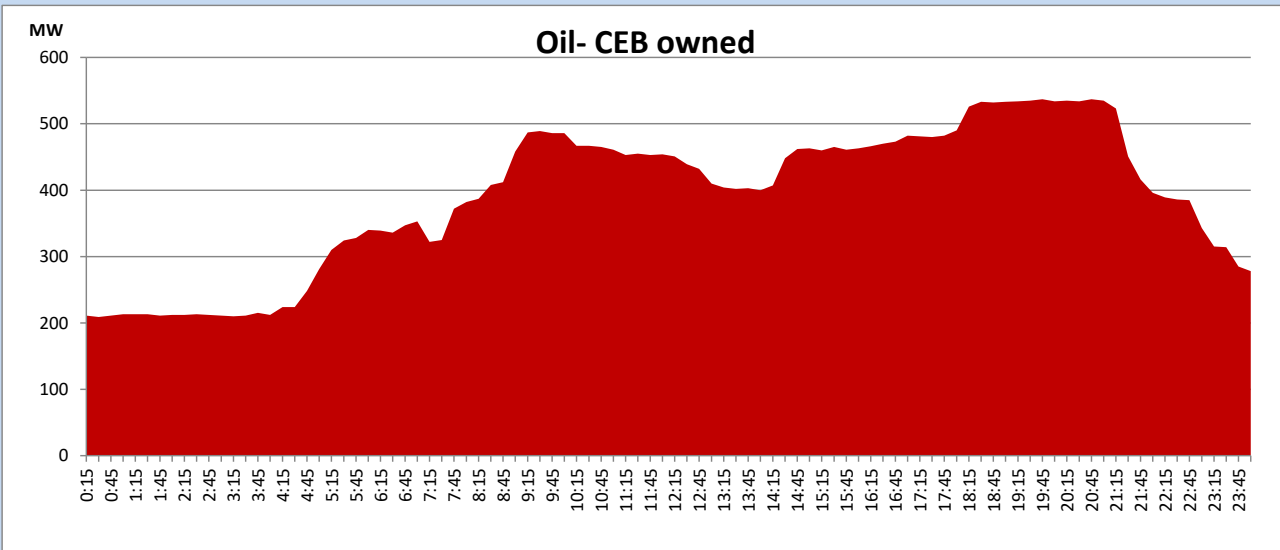
Coal Generation during

July 20, 2023



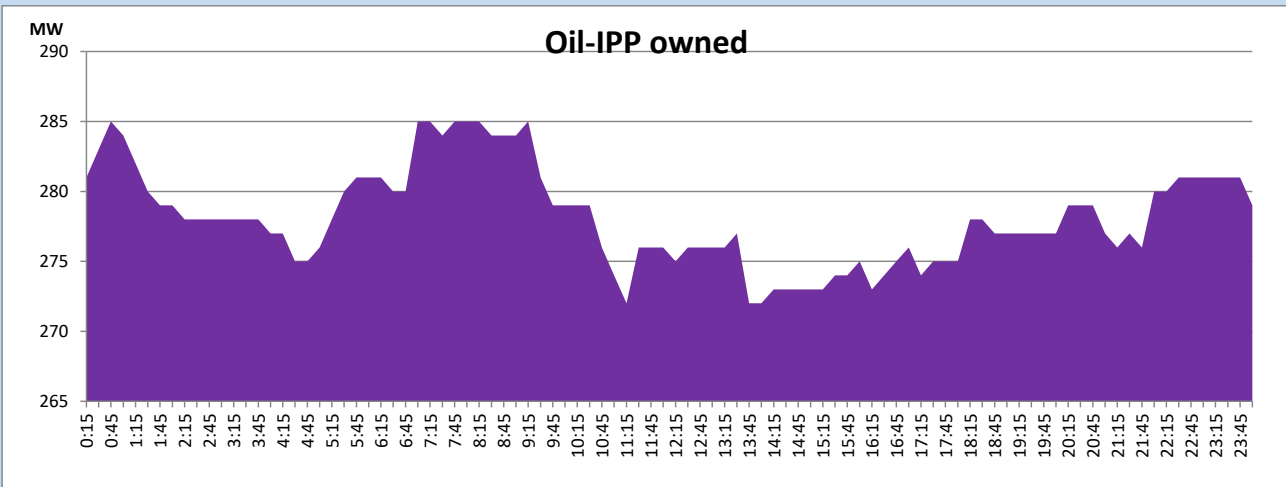
CEB Oil Plant Generation during

July 20, 2023



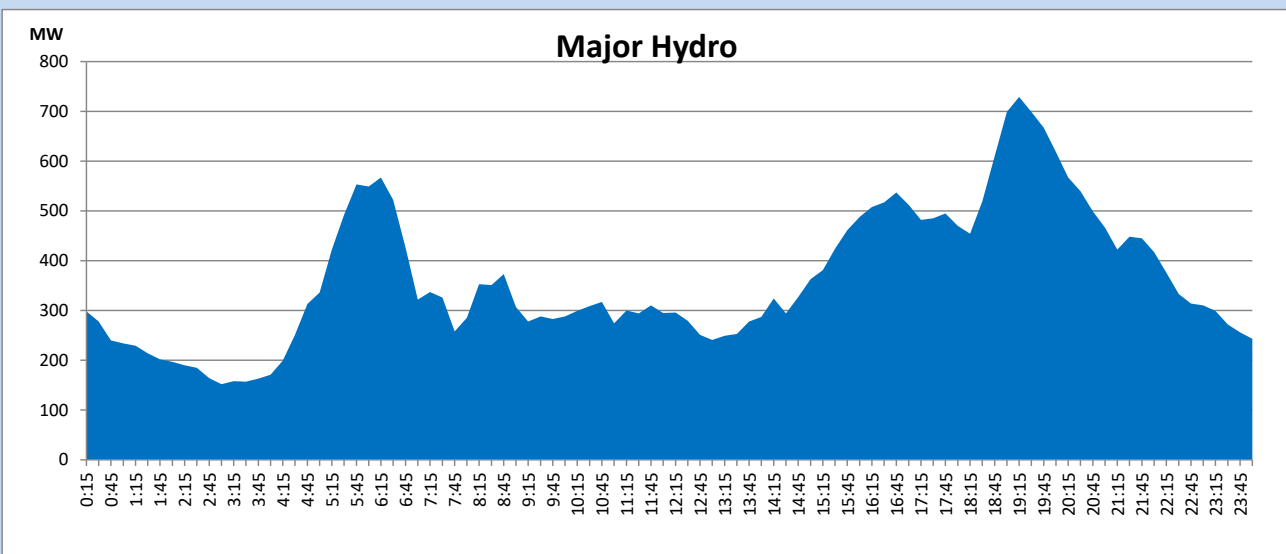
IPP Oil Plant Generation during

July 20, 2023



Major Hydro Generation during

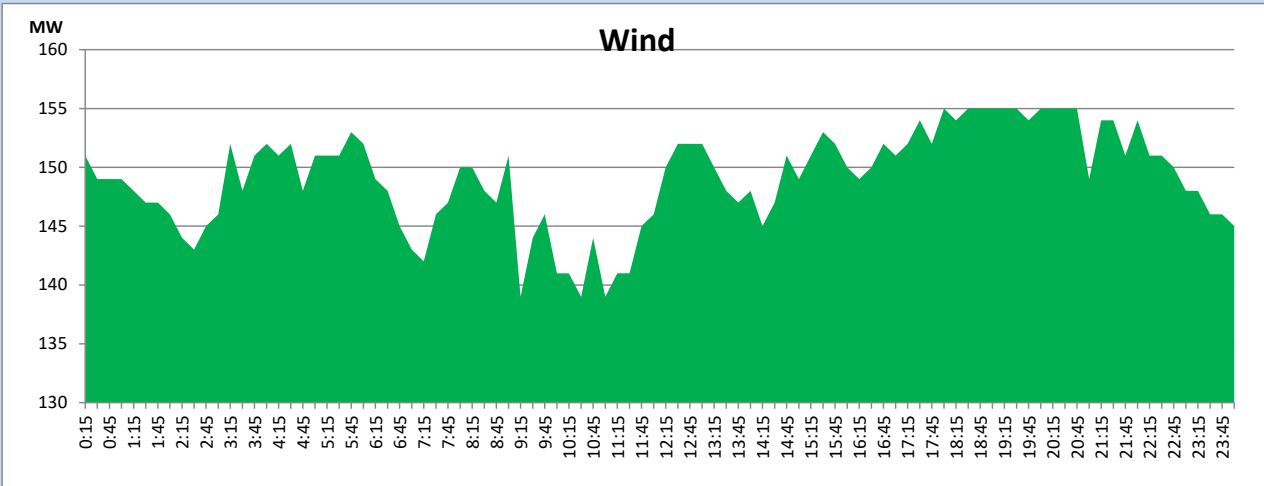
July 20, 2023



Wind Generation during

July 20, 2023

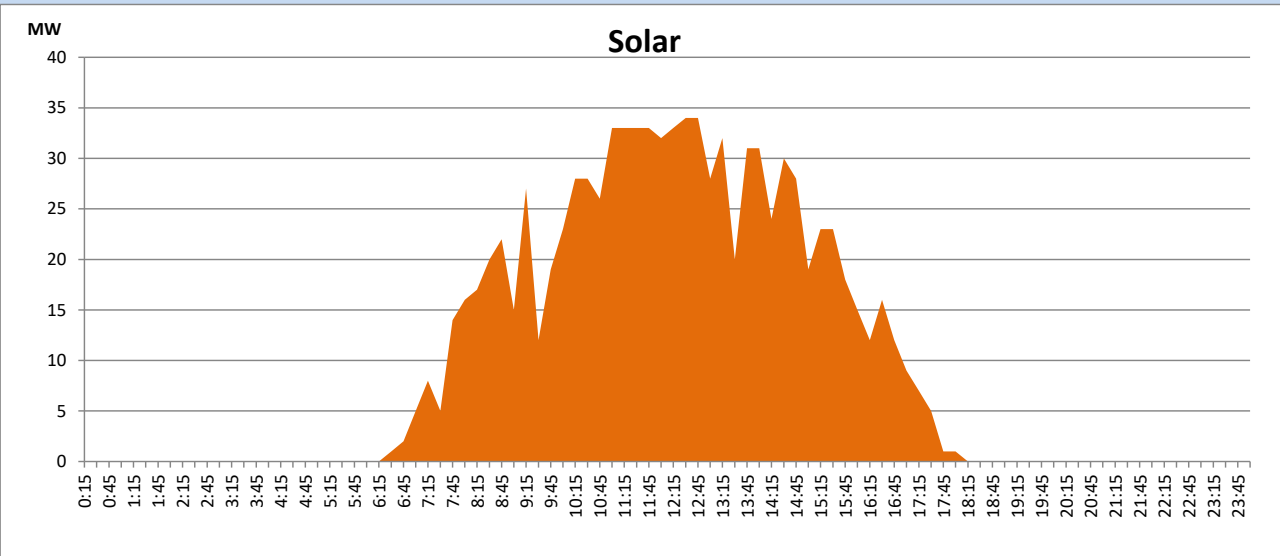
Based on Telemetered Power Stations only



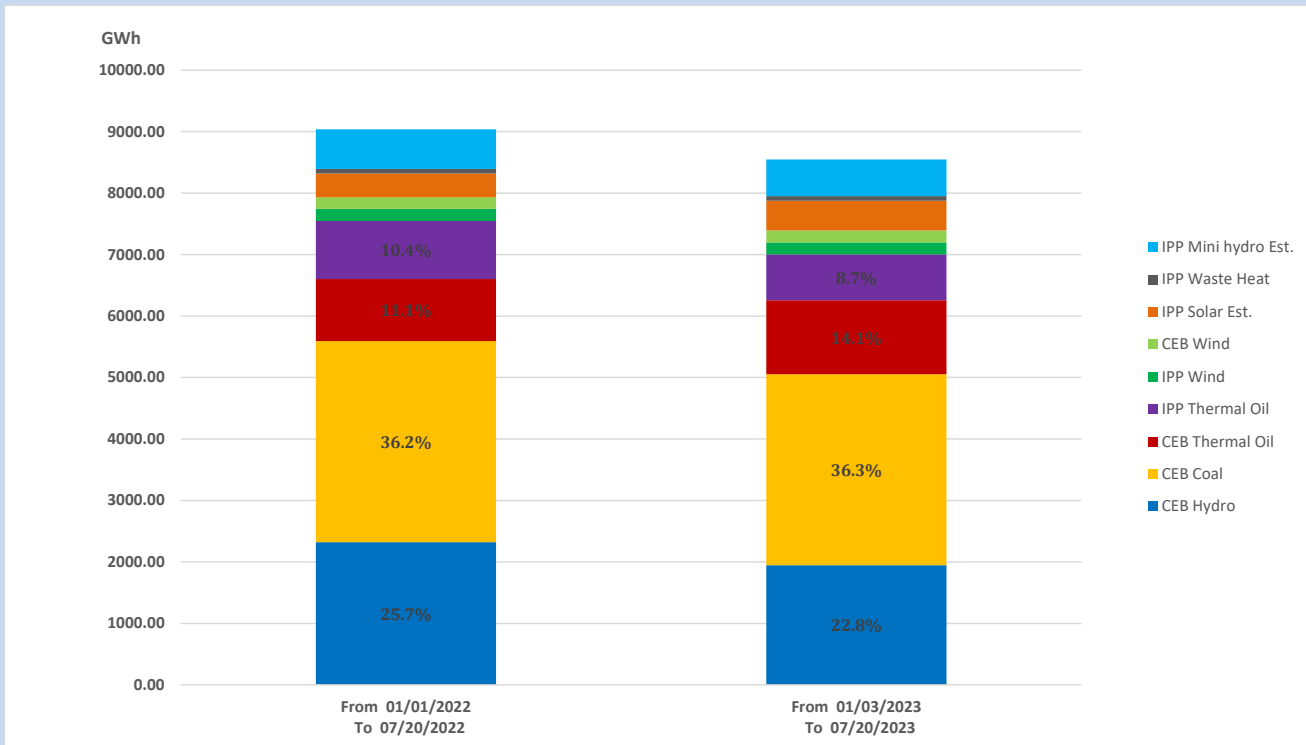
Solar Generation during

July 20, 2023

Based on Telemetered Power Stations only



15. Cumulative Dispatch Comparison with Last Year



Cumulative dispatch

From 01/01/2022 To 07/20/2022

9038 GWh

From 01/01/2023 To 07/20/2023

8547 GWh

The above figures are including contribution from roof top solar, non telemetered solar and mini hydro plants

Thermal Plant Fuel types

Power Station	Primary Fuel
CEB Thermal	
Sapugaskanda 1	Heavy Fuel
Sapugaskanda 2	Heavy Fuel
Kelanitissa Small Gas Turbines	Auto Diesel
GT 7 - Kelanitissa	Auto Diesel
Kelanitissa CCY	Naphtha or Diesel
Lakvijaya 1	Coal
Lakvijaya 2	Coal
Lakvijaya 3	Coal
Uthuru Janani	Heavy Fuel
Barge CEB	Heavy Fuel
KCCPS -2	Auto Diesel

Power Station	Primary Fuel
Private Thermal	
West Coast	Auto Diesel / Heavy Fuel

Major Incidents reported during the day

July 20, 2023

1) Kothmale – New Habarana 220kV cct 01 tripped from Kothmale end and tripped and A/R from New Habarana end at 12:19hrs due to the operation of differential protection. The cct was normalized at 12:31hrs.