

Generation and Reservoirs Statistics

July 19, 2023



PUBLIC UTILITIES COMMISSION OF SRI LANKA

1. Daily Generation Mix in MWh

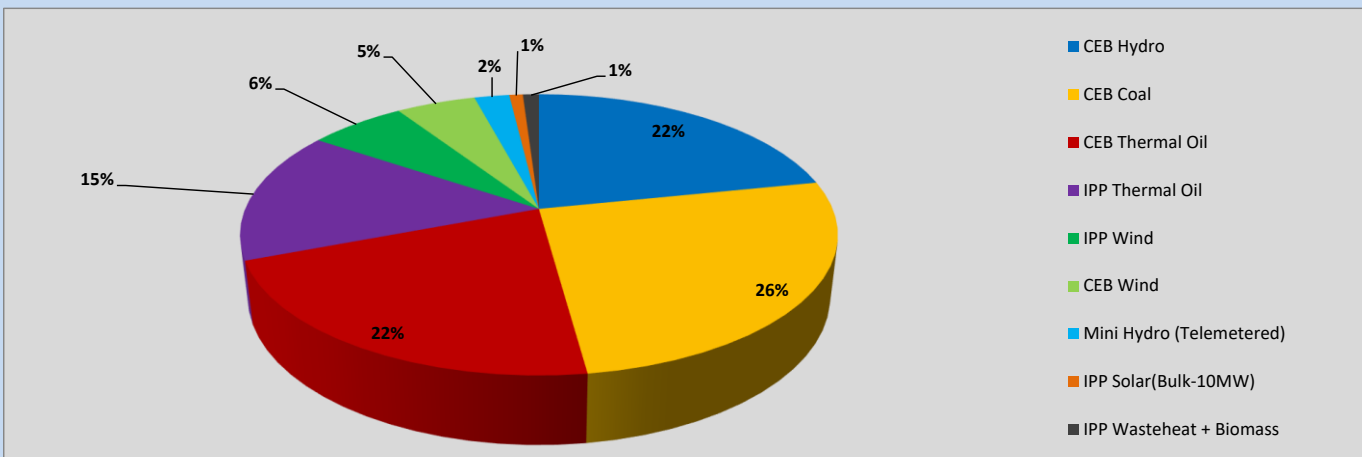


Table 01

CEB Hydro	9,402	MWh
CEB Coal	11,238	MWh
CEB Thermal Oil	9,220	MWh
IPP Thermal Oil	6,560	MWh
IPP Wind	2,706	MWh
CEB Wind	2,219	MWh
Mini Hydro (Telemetered)	977	MWh
IPP Solar (Bulk)	378	MWh
IPP Wasteheat + Biomass	447	MWh
Total Generation (Excluding estimated figures)	43,147	MWh
* Estimated unserved energy	0	MWh
* Estimated Mini Hydro (Non telemetered)	2533	MWh
* Estimated IPP Solar PV (Bulk 1-10MW)	304	MWh
* Estimated Solar Roof Top PV	1650	MWh
Total Generation (Including estimated figures)	47,634	MWh

* Estimated figures of CEB generation report

2. Cumulative Dispatch

Following data excludes the contribution from roof top solar, non telemetered solar and mini hydro plants

Table 02 - Current Month

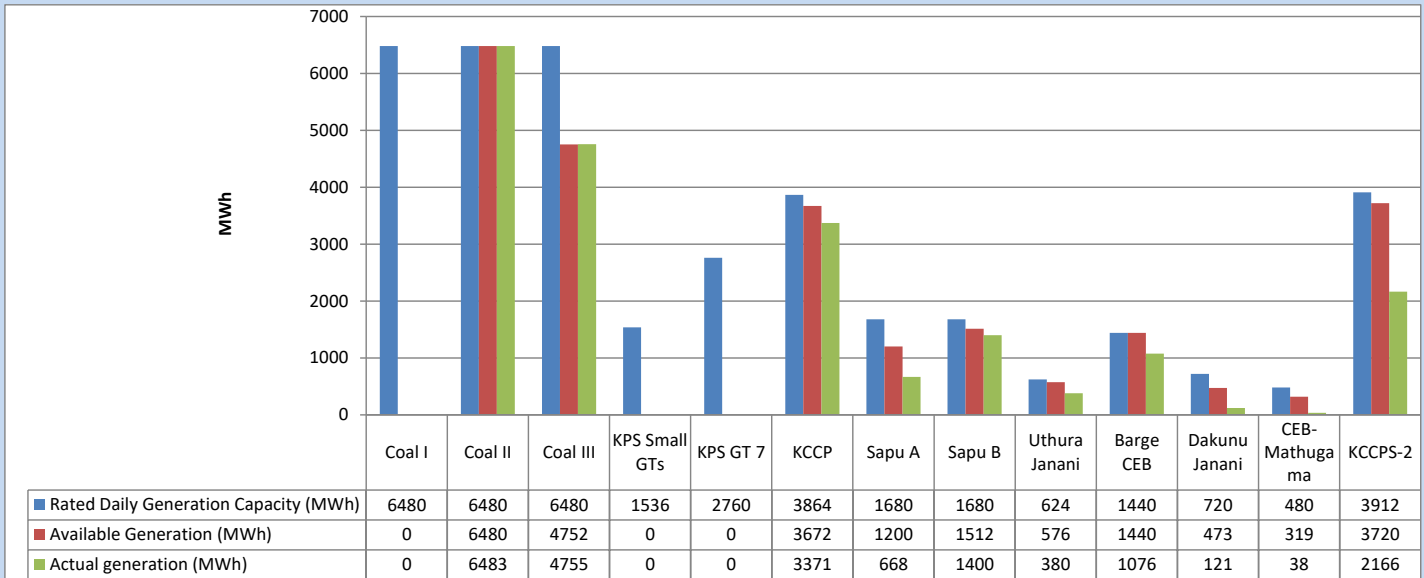
Category	Dispatch (GWh)	
CEB Hydro	205	28.24%
CEB Coal	215	29.62%
CEB Thermal Oil	114	15.63%
IPP Thermal	85	11.65%
SPP Wind	36	4.89%
CEB Wind	33	4.47%
Mini Hydro (Telemetered)	27	3.68%
IPP Solar (Bulk-10MW)	6	0.82%
IPP Wasteheat + BMP	7	0.99%
Total	727	

Table 03 - Current Year

Category	Dispatch (GWh)	
CEB Hydro	1,943	25.30%
CEB Coal	3,098	40.34%
CEB Thermal Oil	1,197	15.59%
IPP Thermal	739	9.62%
SPP Wind	187	2.43%
CEB Wind	197	2.56%
Mini Hydro (Telemetered)	193	2.51%
IPP Solar (Bulk-10MW)	59	0.77%
IPP Wasteheat	67	0.87%
Total	7,680	

3. CEB owned Thermal Plant Dispatch

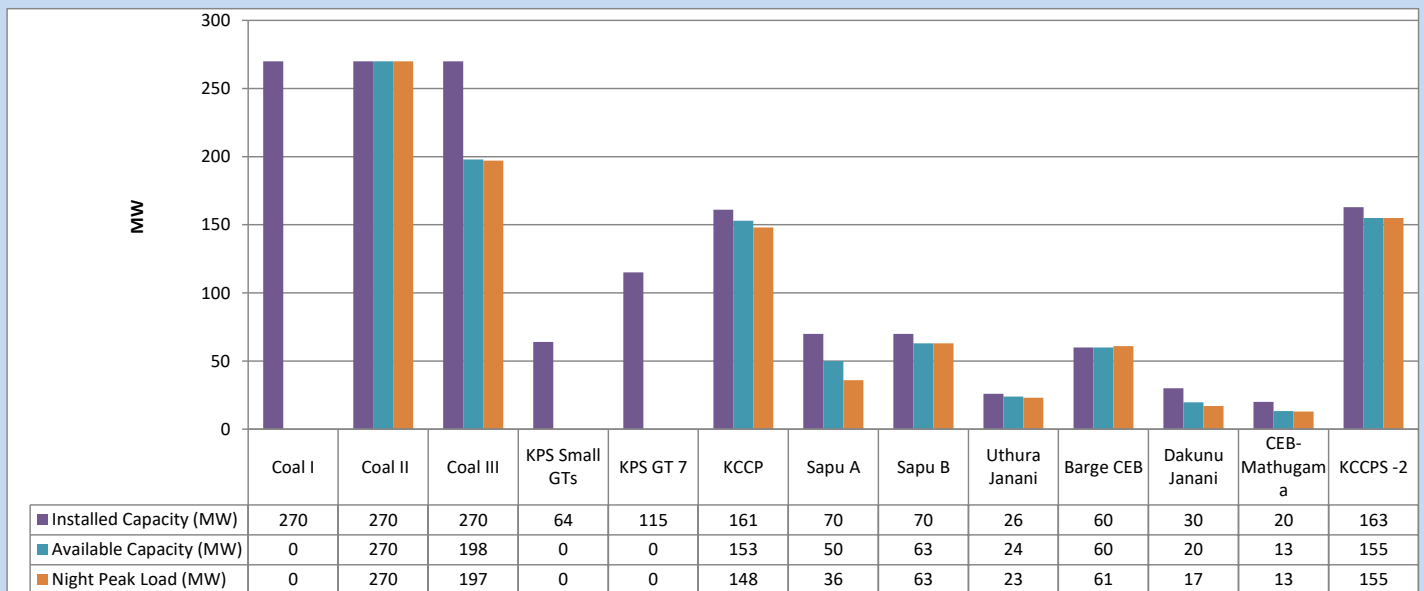
July 19, 2023



Available Generation is estimated based on plant availability at 6.00am on

July 20, 2023

4. CEB owned Thermal Plant Loading at the Night Peak

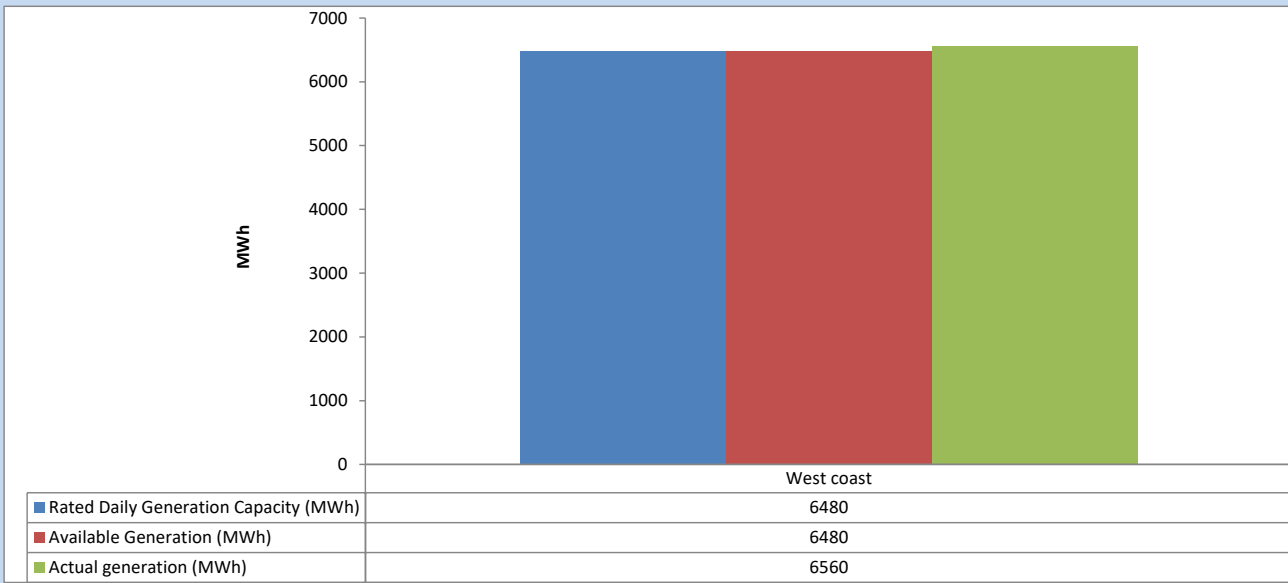


Plant availability is recorded at 6.00 am on

July 20, 2023

5. IPP owned Thermal Plant Dispatch

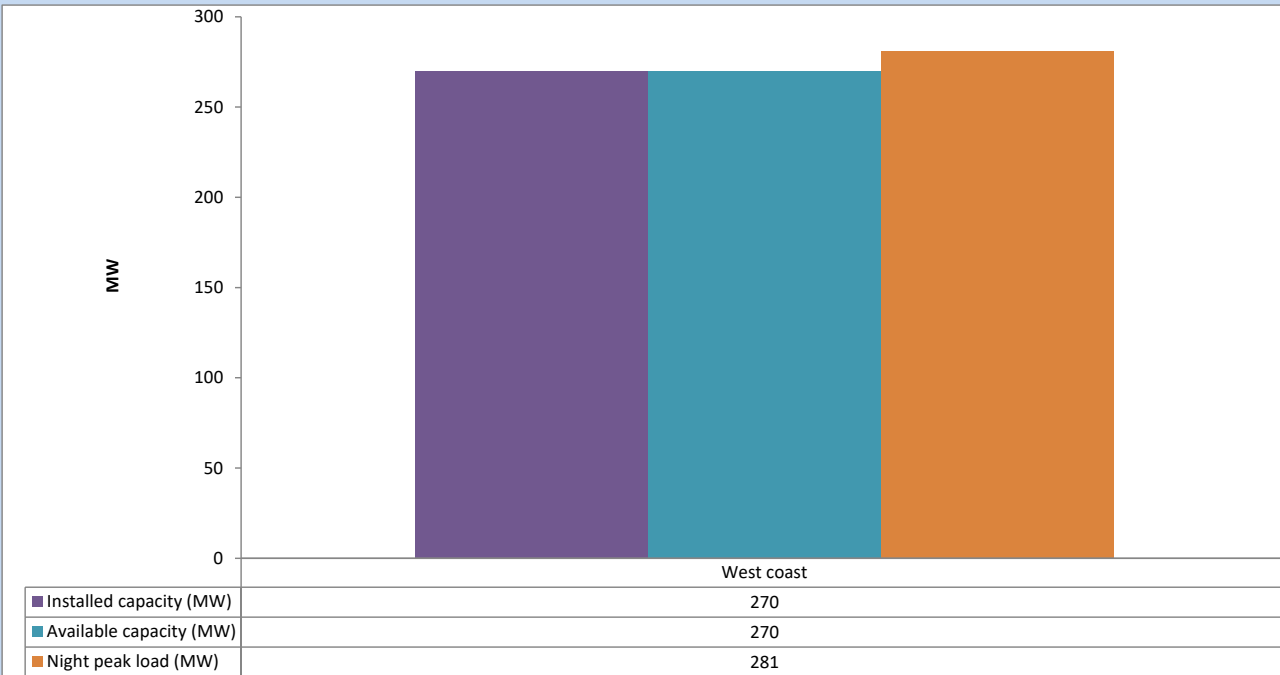
July 19, 2023



Available Generation is estimated based on plant availability at 6.00am on

July 20, 2023

6. IPP owned Thermal Plant Loading at the Night Peak

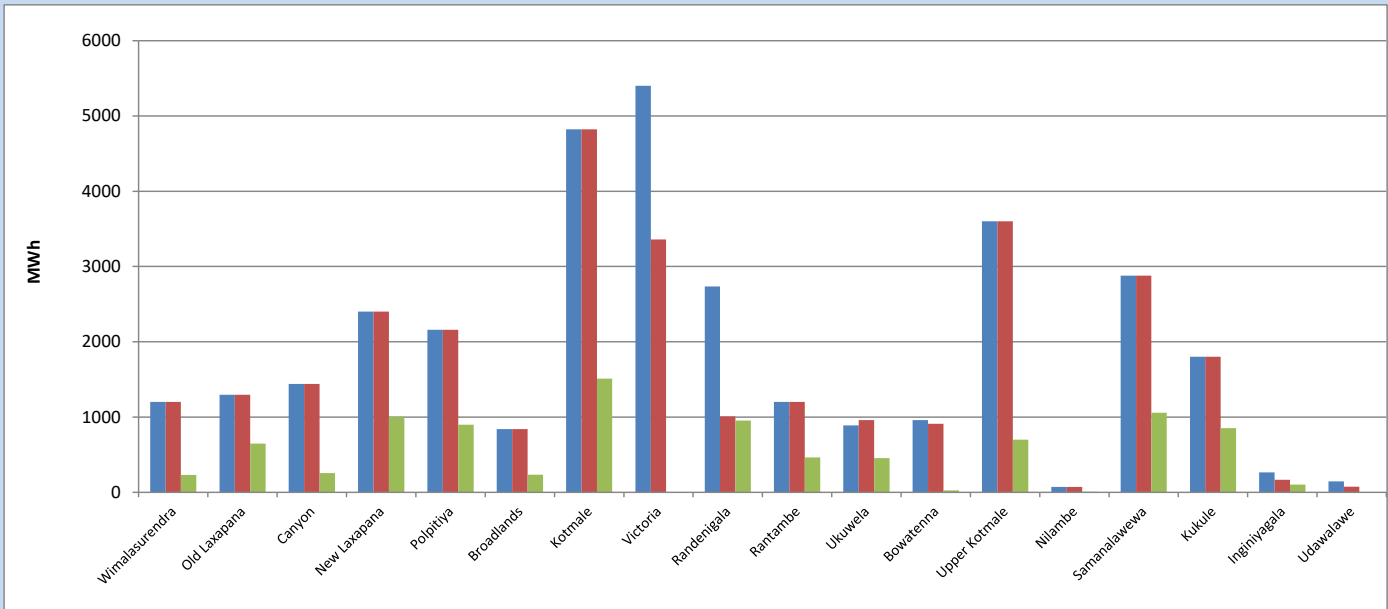


Plant availability is recorded at 6.00 am on

July 20, 2023

7. Major Hydro Plant Dispatch

July 19, 2023

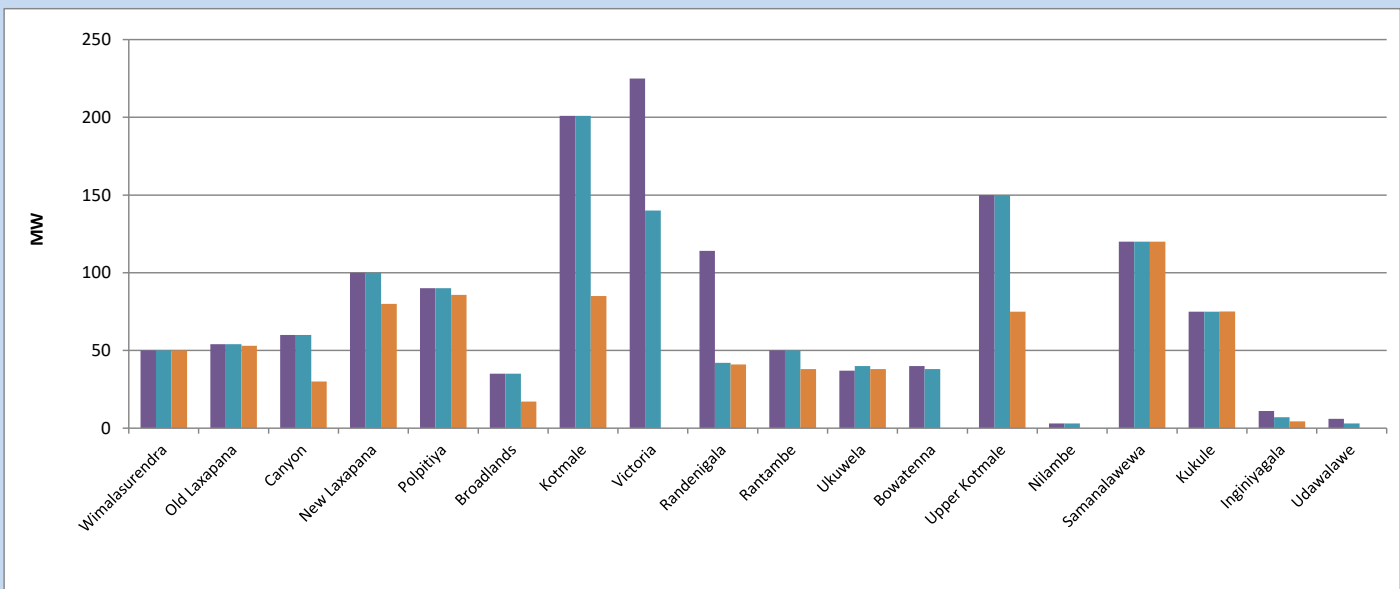


Available Generation is estimated based on plant availability at 6.00am on
Broadlands power plant is operating in the Commissioning Stage

July 20, 2023

8. Major Hydro Plant Loading at Night Peak

July 19, 2023



Plant availability is recorded at 6.00 am on
Broadlands power plant is operating in the Commissioning Stage

July 20, 2023

9. Summary of Major Plant performance

Table 04

Plant	Installed Capacity	Plant Availability	Night peak Load	Plant Dispatch
	(MW)	(MW)	(MW)	(MWh)
Wimalasurendra	50	50	50	231
Old Laxapana	54	54	53	647
Canyon	60	60	30	257
New Laxapana	100	100	80	1,005
Polpitiya	90	90	86	899
Broadlands	35	35	17	235
Kotmale	201	201	85	1,510
Victoria	225	140	0	0
Randenigala	114	42	41	955
Rantambe	50	50	38	465
Ukuwela	37	40	38	454
Bowatenna	40	38	0	26
Upper Kotmale	150	150	75	699
Nilambe	3	3	0	8
Samanalawewa	120	120	120	1,057
Kukule	75	75	75	852
Inginiyagala	11	7	4	102
Udawalawe	6	3	0	0
Puttalam Coal I	270	0	0	0
Puttalam Coal II	270	270	270	6,483
Puttalam Coal III	270	198	197	4,755
KPS Small GTs	64	0	0	0
KPS GT 7	115	0	0	0
KCCP	161	153	148	3,371
Sapugaskanda A	70	50	36	668
Sapugaskanda B	70	63	63	1,400
Uthura Janani	26	24	23	380
Barge CEB	60	60	61	1,076
CEB-Hambantota	30	20	17	121
CEB-Mathugama	20	13	13	38
ACE Matara	24	0	0	0
Asia Power	50	0	0	0
KCCPS -2	163	155	155	2,166
West Coast	270	270	281	6,560
Nothern Power	36	0	0	0
ACE Embilipitiya	93	0	0	0
Total	3,483	2,534	2,266	43,147

Plant availability is the availability recorded at 6 am on

July 20, 2023

10. Contribution to the Night Peak in MW

July 19, 2023

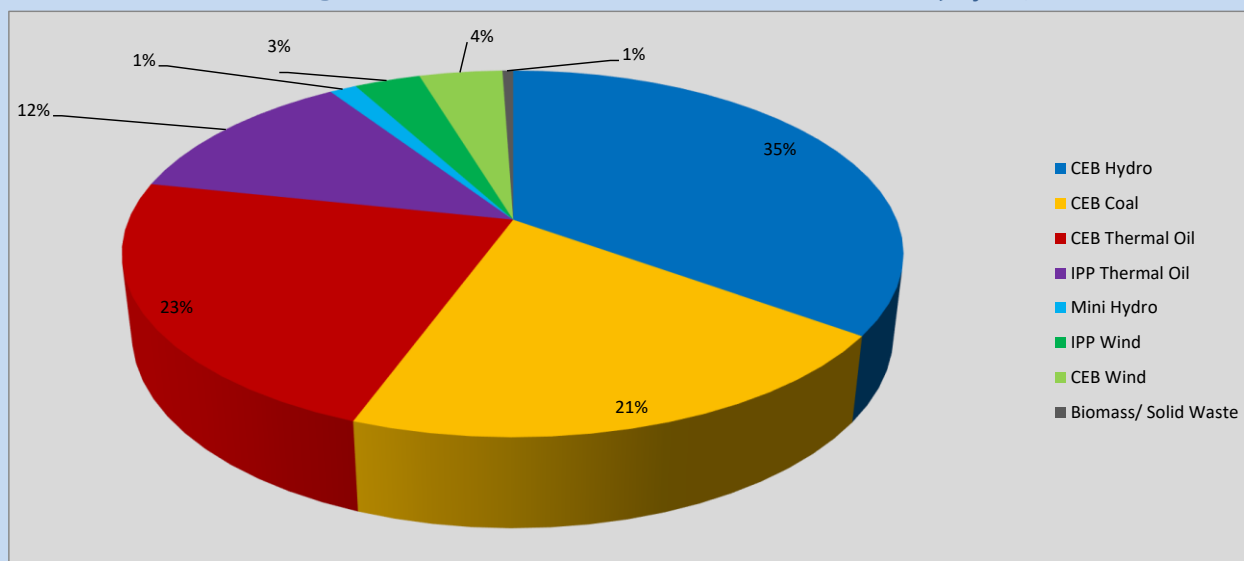


Table 05

CEB Hydro	792 MW
CEB Coal	467 MW
CEB Thermal Oil	516 MW
IPP Thermal Oil	281 MW
Mini Hydro (Telemetered)	30 MW
IPP Wind	74.1 MW
CEB Wind	93.2 MW
Biomass/ Solid Waste	12 MW

Recorded Peak Demand Data

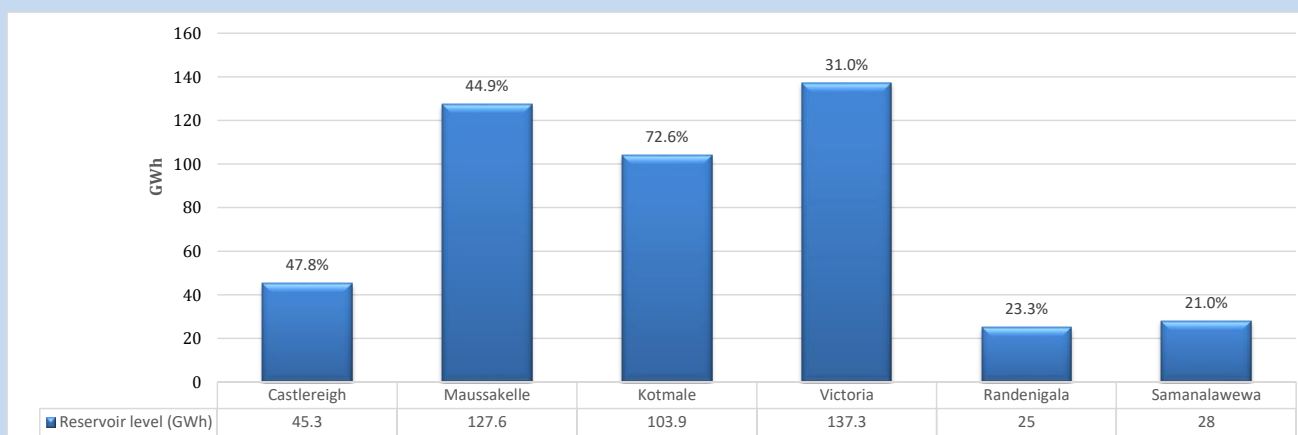
Table 06

Night Peak*	2,266 MW
Day Peak Maximum Demand	1,962 MW
Day Peak Minimum Demand	1,707 MW
Off Peak Minimum Demand	1,295 MW

Above figures are excluding contribution from roof top solar, non telemetered solar and mini hydro plants

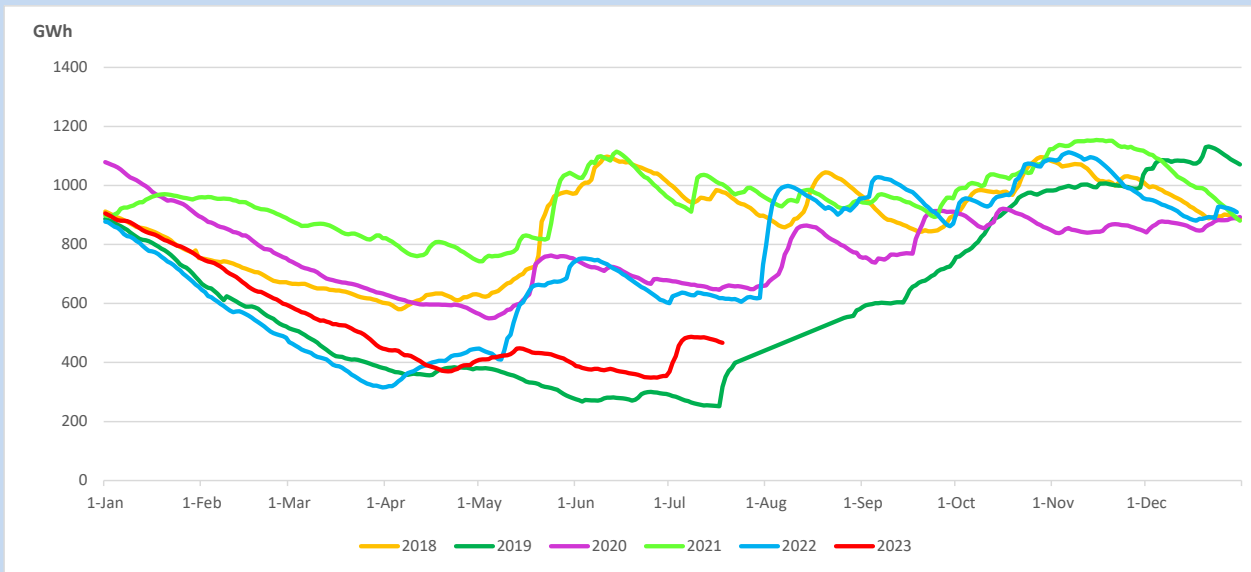
Reservoir Levels -

as at 06.00 Hr on July 20, 2023

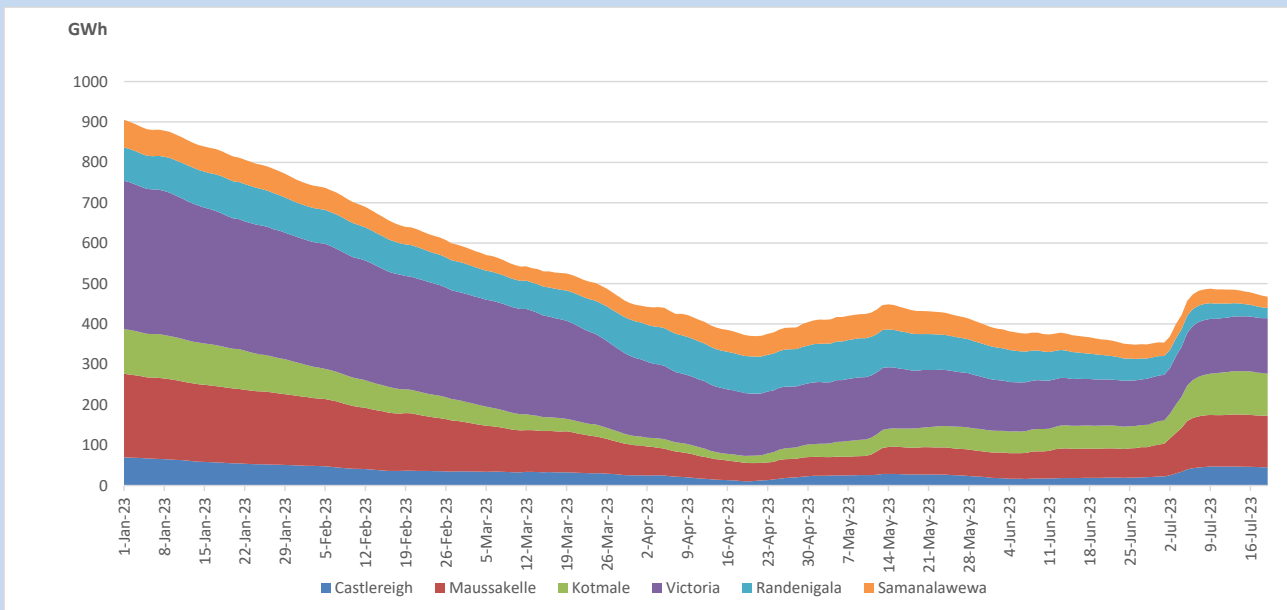


Total Reservoir Level 467.1 GWh
 % of Total capacity 38.7%

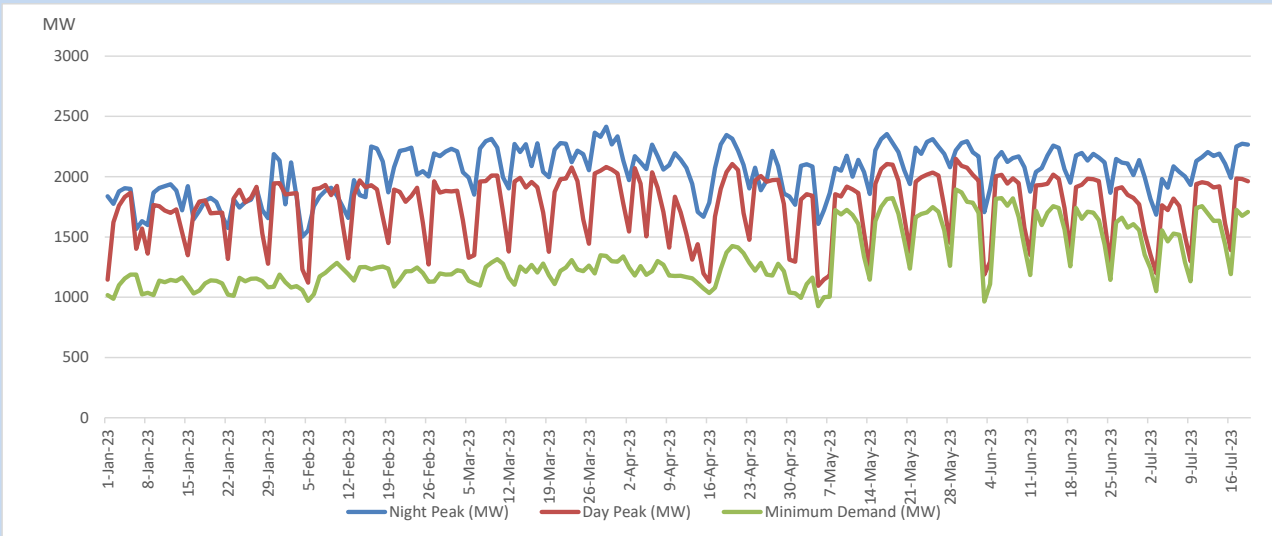
11. Comparison of Total Reservoir Storage Levels with Past Years



12. Variation of Major Hydro Reservoir Levels in the current year (GWh)



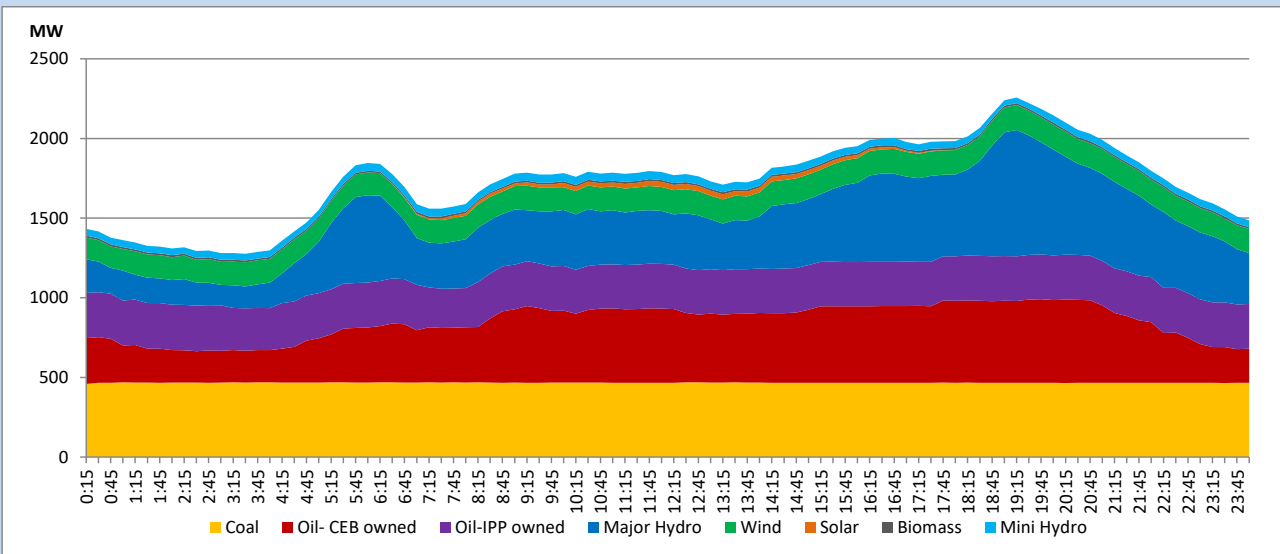
13. Variation of Demand during the current year



The above figures are excluding contribution from roof top solar, non telemetered solar and mini hydro plants

14. Daily Load Curve

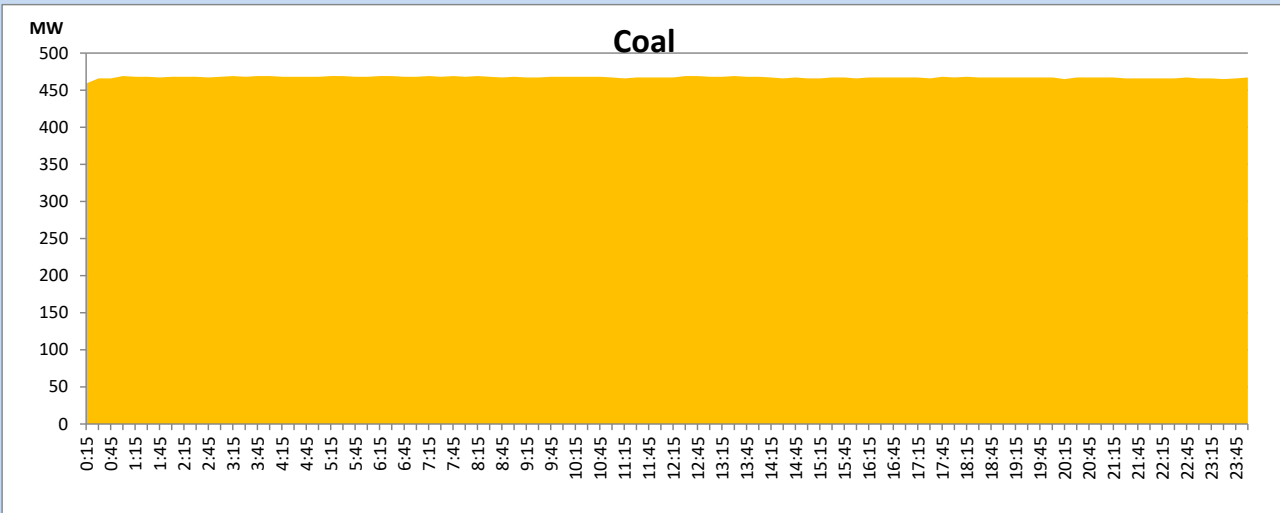
July 19, 2023



Solar and wind data is based on Telemetered Power Stations only

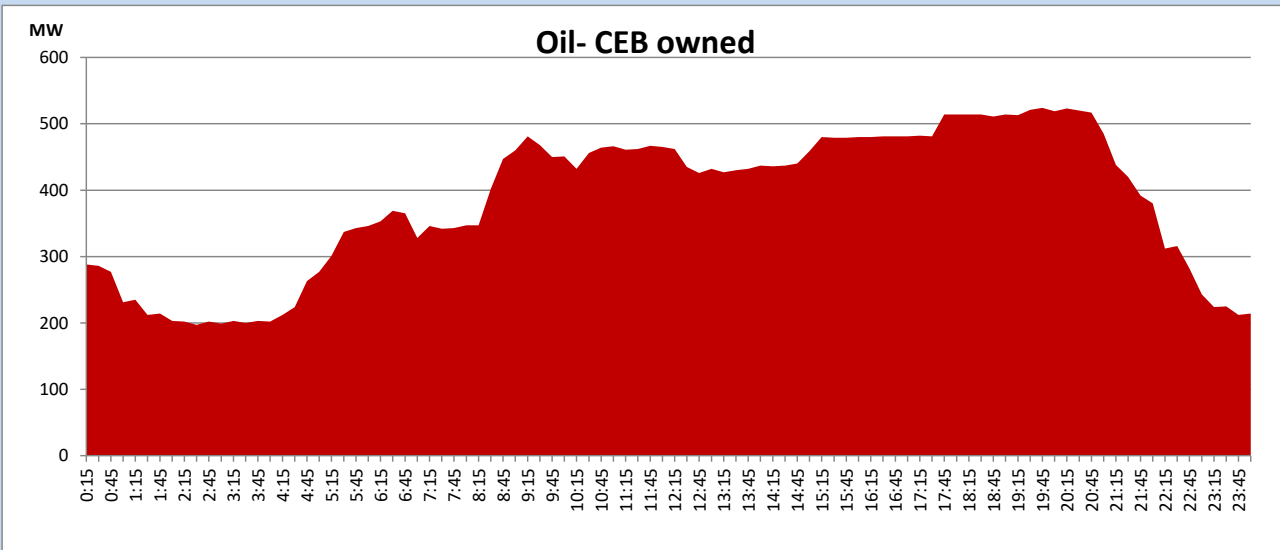
Coal Generation during

July 19, 2023



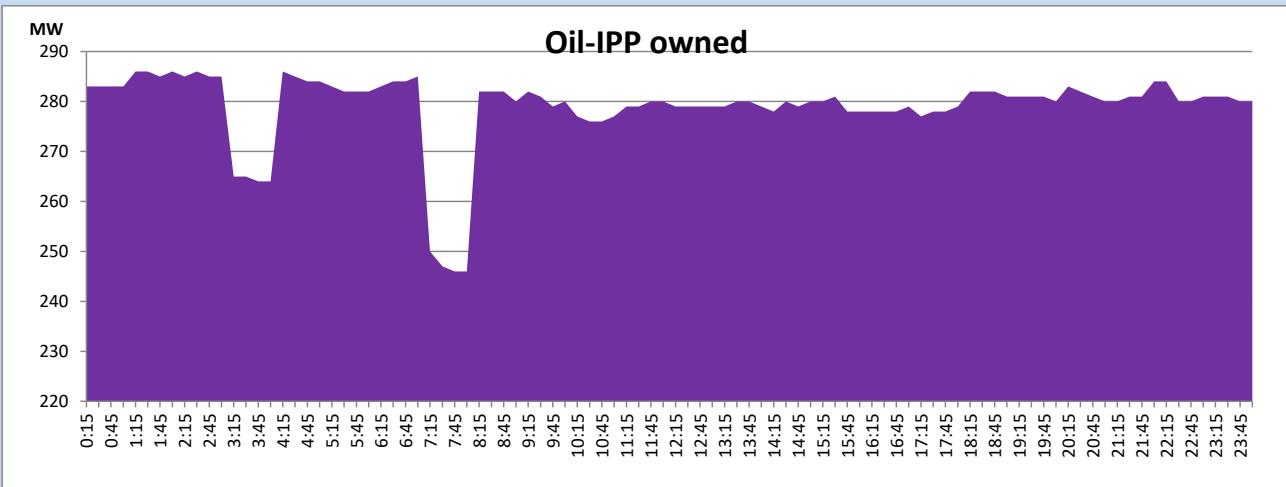
CEB Oil Plant Generation during

July 19, 2023



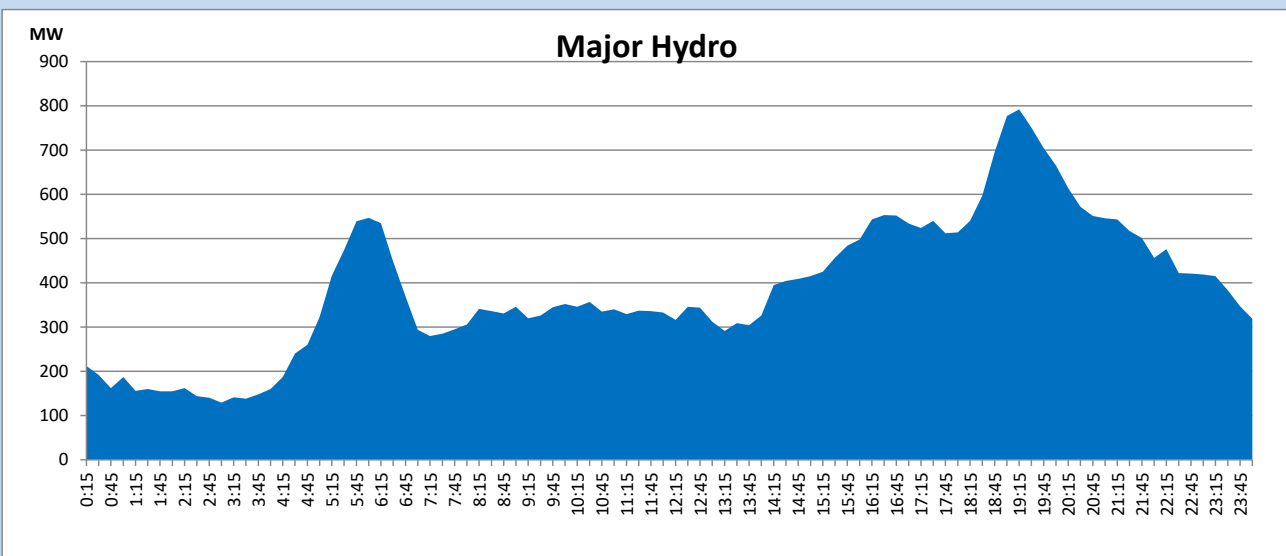
IPP Oil Plant Generation during

July 19, 2023



Major Hydro Generation during

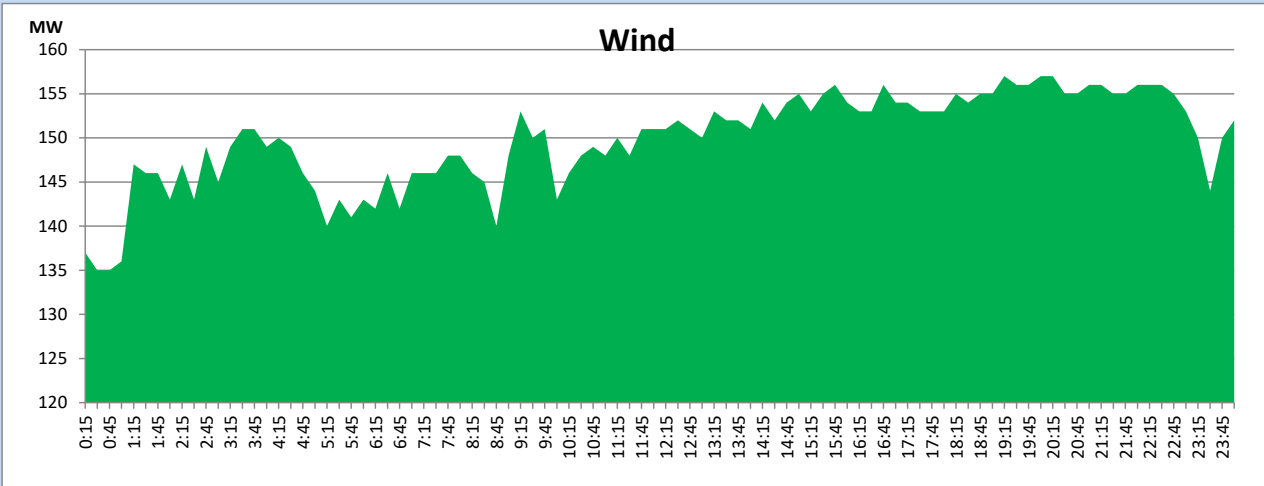
July 19, 2023



Wind Generation during

July 19, 2023

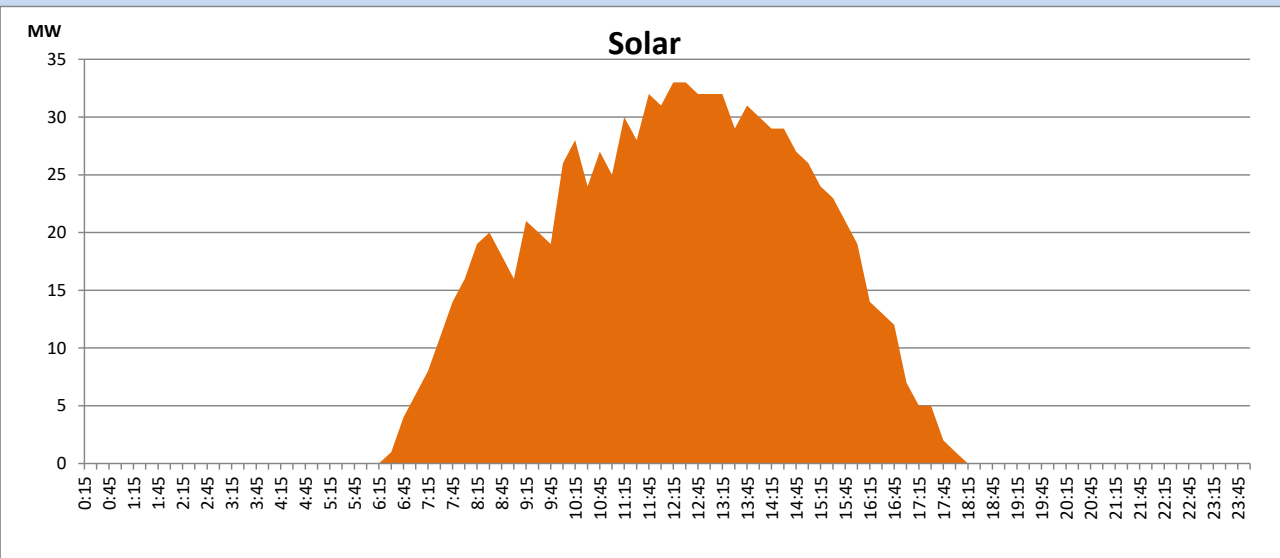
Based on Telemetered Power Stations only



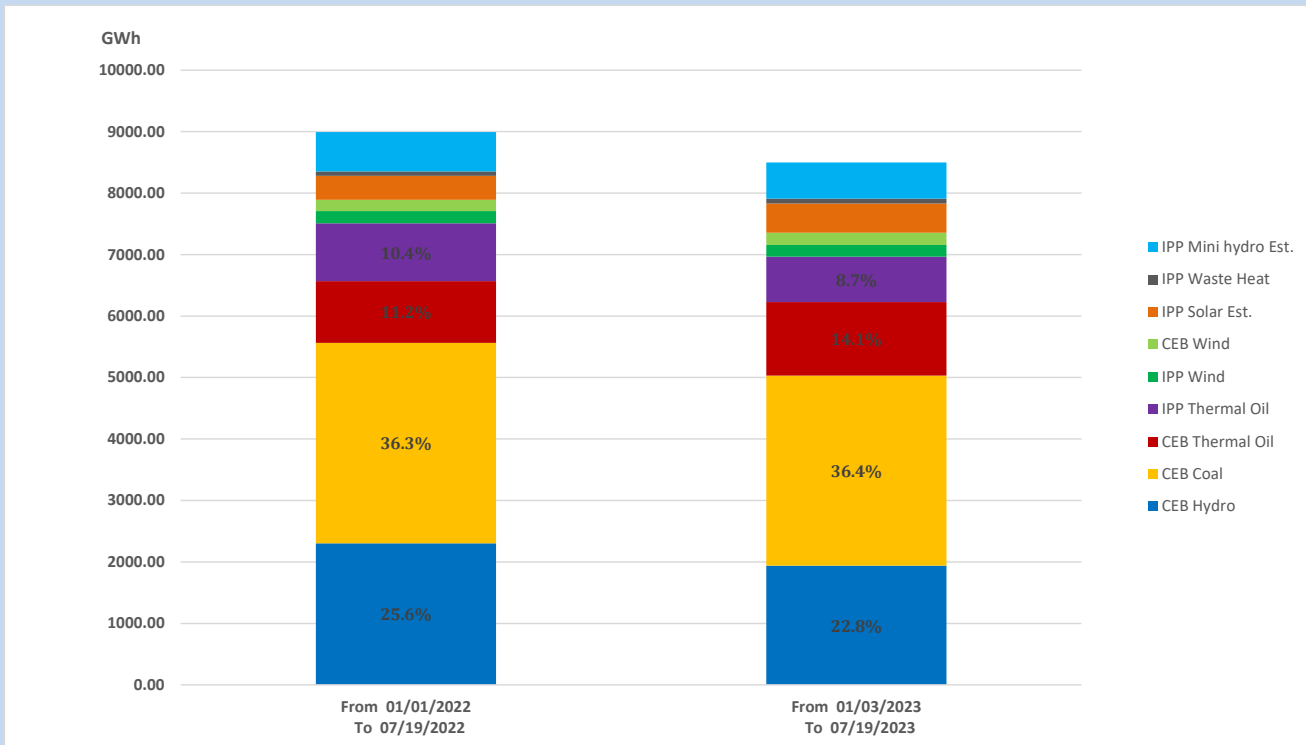
Solar Generation during

July 19, 2023

Based on Telemetered Power Stations only



15. Cumulative Dispatch Comparison with Last Year



Cumulative dispatch

From 01/01/2022 To 07/19/2022

8994 GWh

From 01/01/2023 To 07/19/2023

8500 GWh

The above figures are including contribution from roof top solar, non telemetered solar and mini hydro plants

Thermal Plant Fuel types

Power Station	Primary Fuel
CEB Thermal	
Sapugaskanda 1	Heavy Fuel
Sapugaskanda 2	Heavy Fuel
Kelanitissa Small Gas Turbines	Auto Diesel
GT 7 - Kelanitissa	Auto Diesel
Kelanitissa CCY	Naphtha or Diesel
Lakvijaya 1	Coal
Lakvijaya 2	Coal
Lakvijaya 3	Coal
Uthuru Janani	Heavy Fuel
Barge CEB	Heavy Fuel
KCCPS -2	Auto Diesel

Power Station	Primary Fuel
Private Thermal	
West Coast	Auto Diesel / Heavy Fuel

Major Incidents reported during the day

July 19, 2023

1) KPS GT 7 made unavailable from 9:41hrs for repairing of exhaust silencer.