

# Generation and Reservoirs Statistics

July 18, 2023



PUBLIC UTILITIES COMMISSION OF SRI LANKA

## 1. Daily Generation Mix in MWh

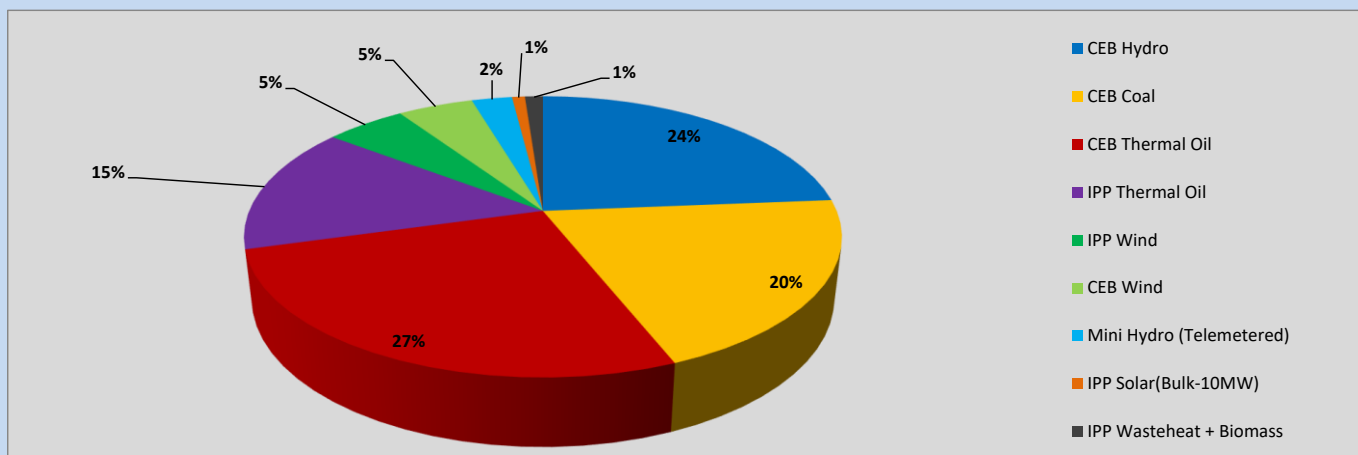


Table 01

CEB Hydro	10,237	MWh
CEB Coal	8,729	MWh
CEB Thermal Oil	11,538	MWh
IPP Thermal Oil	6,323	MWh
IPP Wind	2,241	MWh
CEB Wind	2,107	MWh
Mini Hydro (Telemetered)	1,130	MWh
IPP Solar (Bulk)	360	MWh
IPP Wasteheat + Biomass	501	MWh
<b>Total Generation (Excluding estimated figures)</b>	<b>43,166</b>	<b>MWh</b>
* Estimated unserved energy	0	MWh
* Estimated Mini Hydro (Non telemetered)	2380	MWh
* Estimated IPP Solar PV (Bulk 1-10MW)	304	MWh
* Estimated Solar Roof Top PV	1650	MWh
<b>Total Generation (Including estimated figures)</b>	<b>47,500</b>	<b>MWh</b>

\* Estimated figures of CEB generation report

## 2. Cumulative Dispatch

Following data excludes the contribution from roof top solar, non telemetered solar and mini hydro plants

Table 02 - Current Month

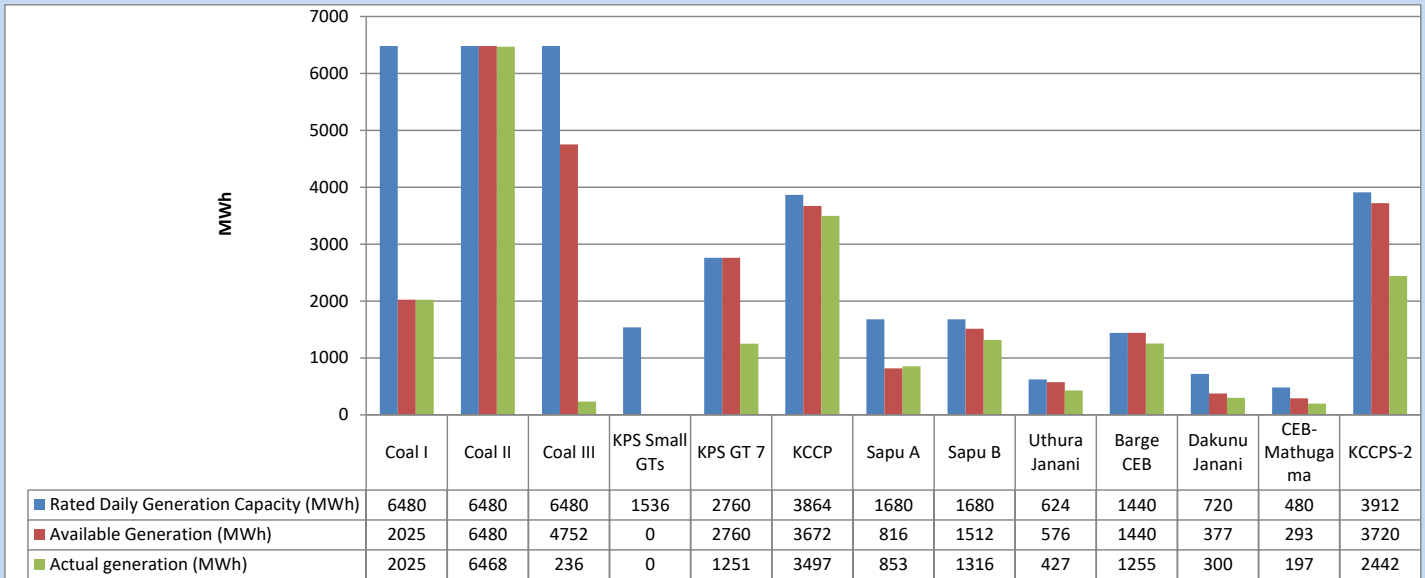
Category	Dispatch (GWh)	
CEB Hydro	196	28.65%
CEB Coal	204	29.84%
CEB Thermal Oil	104	15.27%
IPP Thermal	78	11.43%
SPP Wind	33	4.80%
CEB Wind	30	4.43%
Mini Hydro (Telemetered)	26	3.77%
IPP Solar(Bulk-10MW)	6	0.82%
IPP Wasteheat + BMP	7	0.99%
<b>Total</b>	<b>684</b>	

Table 03 - Current Year

Category	Dispatch (GWh)	
CEB Hydro	1,934	25.32%
CEB Coal	3,087	40.42%
CEB Thermal Oil	1,188	15.56%
IPP Thermal	732	9.59%
SPP Wind	184	2.41%
CEB Wind	194	2.54%
Mini Hydro (Telemetered)	192	2.51%
IPP Solar(Bulk-10MW)	59	0.77%
IPP Wasteheat	67	0.87%
<b>Total</b>	<b>7,637</b>	

### 3. CEB owned Thermal Plant Dispatch

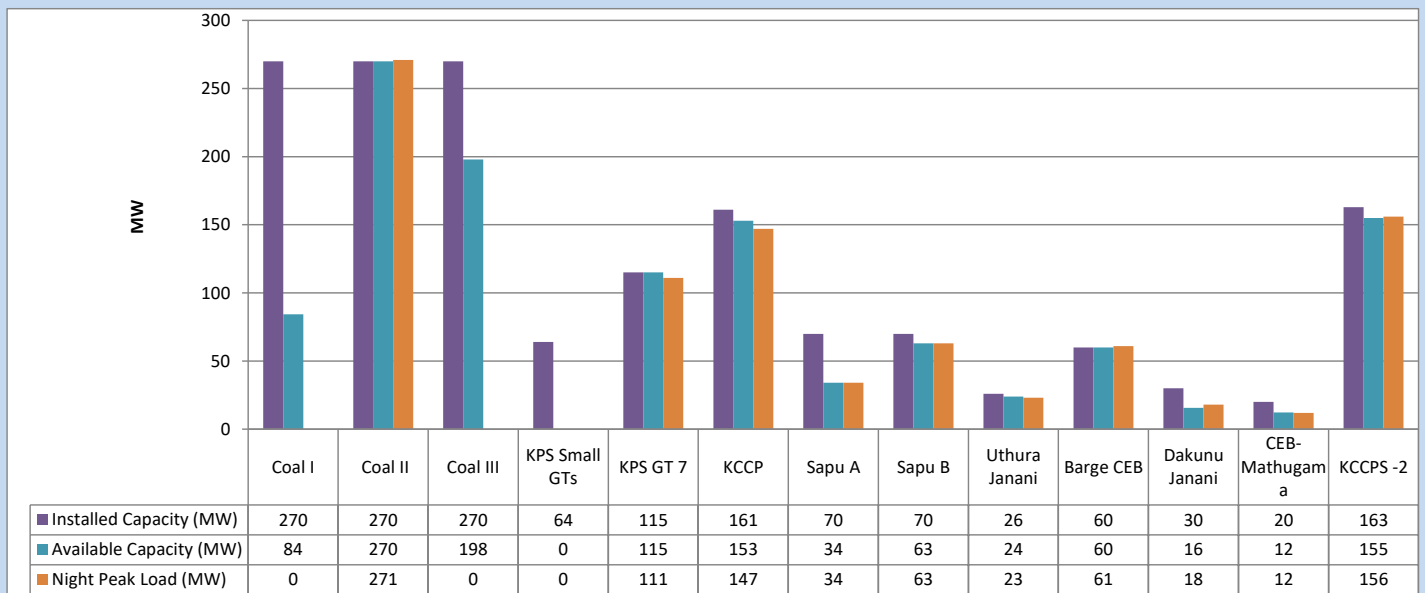
July 18, 2023



Available Generation is estimated based on plant availability at 6.00am on

July 19, 2023

### 4. CEB owned Thermal Plant Loading at the Night Peak

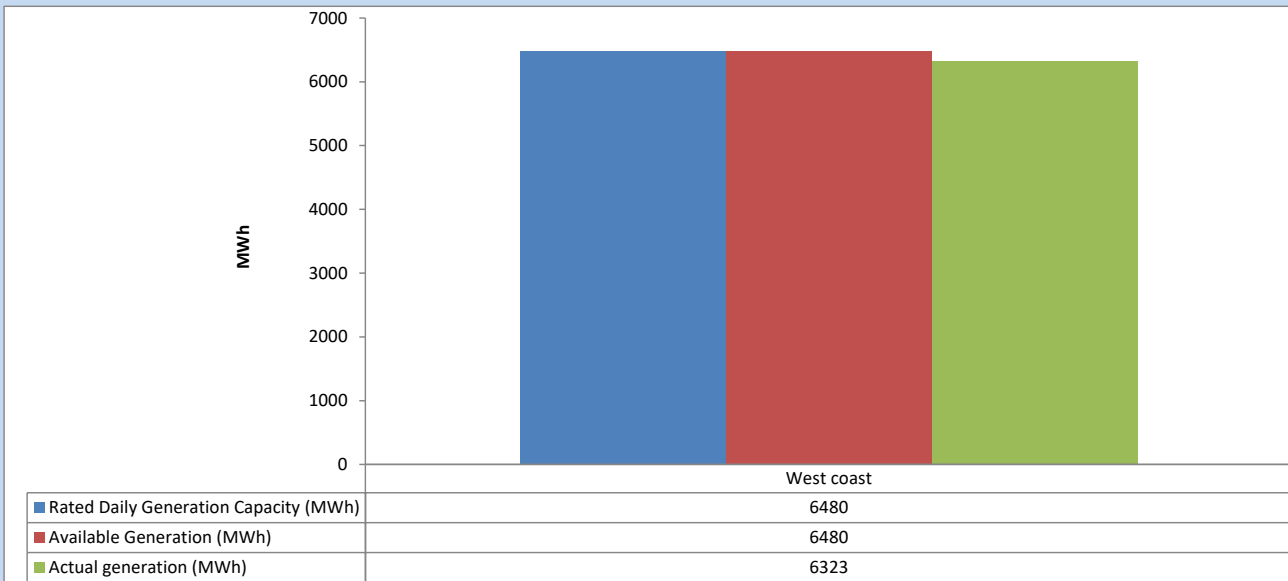


Plant availability is recorded at 6.00 am on

July 19, 2023

## 5. IPP owned Thermal Plant Dispatch

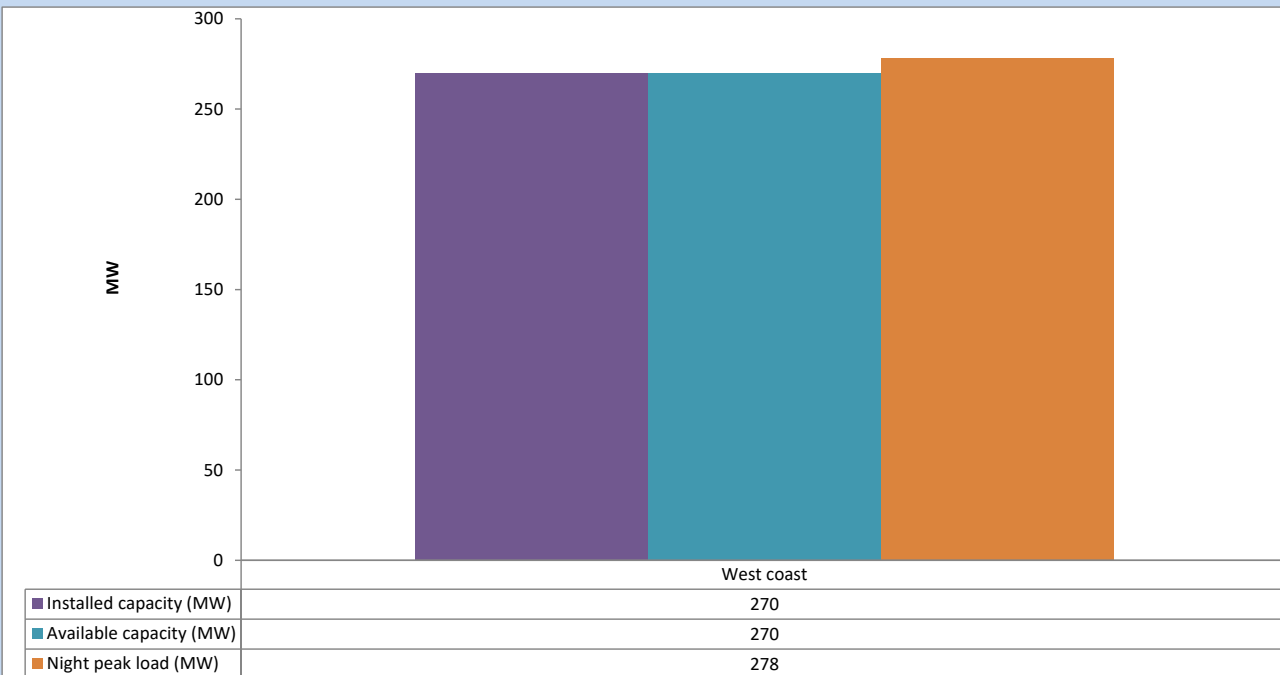
July 18, 2023



Available Generation is estimated based on plant availability at 6.00am on

July 19, 2023

## 6. IPP owned Thermal Plant Loading at the Night Peak

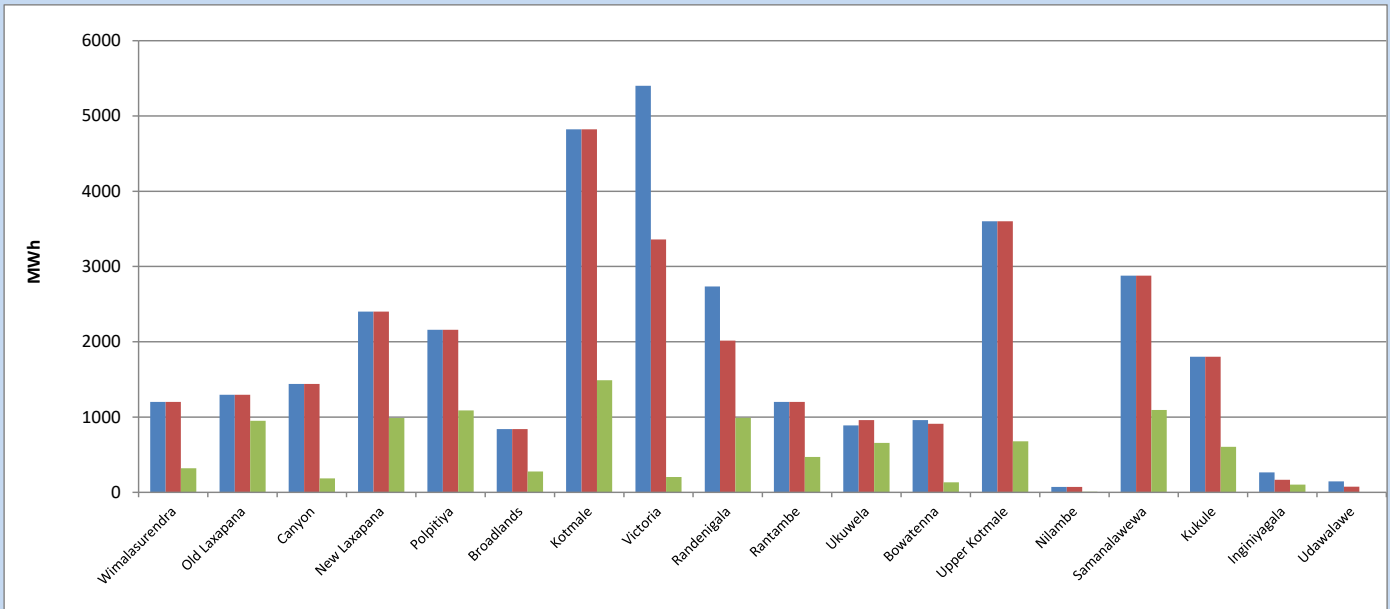


Plant availability is recorded at 6.00 am on

July 19, 2023

## 7. Major Hydro Plant Dispatch

July 18, 2023

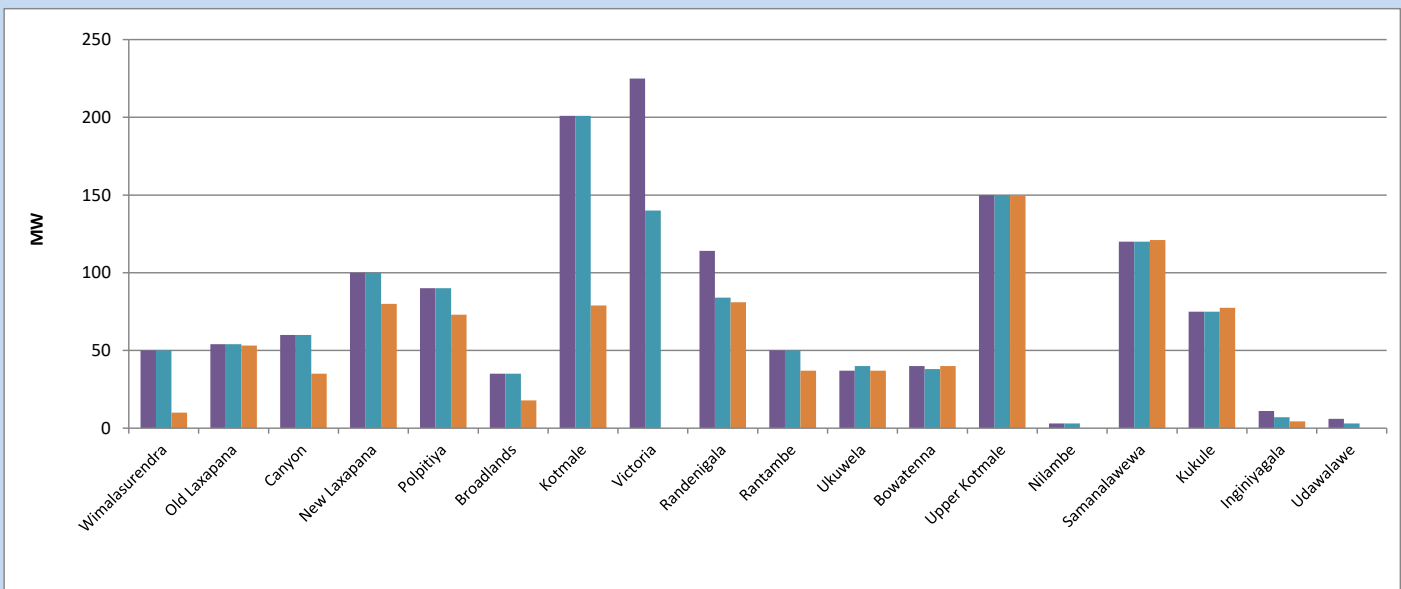


Available Generation is estimated based on plant availability at 6.00am on  
Broadlands power plant is operating in the Commissioning Stage

July 19, 2023

## 8. Major Hydro Plant Loading at Night Peak

July 18, 2023



Plant availability is recorded at 6.00 am on  
Broadlands power plant is operating in the Commissioning Stage

July 19, 2023

## 9. Summary of Major Plant performance

Table 04

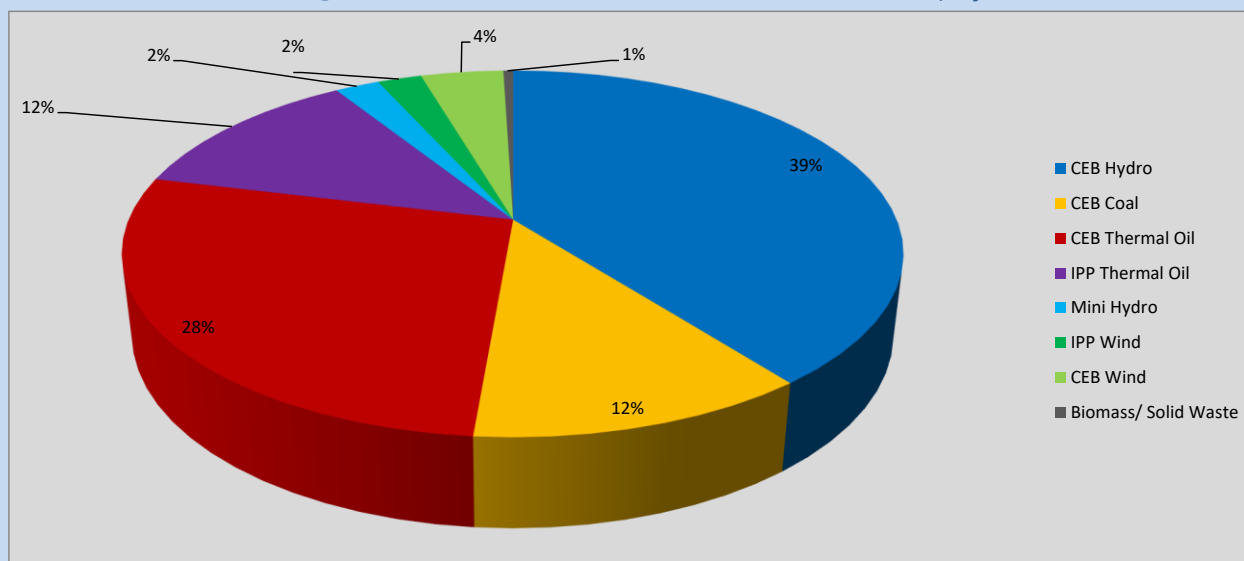
Plant	Installed Capacity	Plant Availability	Night peak Load	Plant Dispatch
	(MW)	(MW)	(MW)	(MWh)
Wimalasurendra	50	50	10	320
Old Laxapana	54	54	53	952
Canyon	60	60	35	184
New Laxapana	100	100	80	987
Polpitiya	90	90	73	1,087
Broadlands	35	35	18	277
Kotmale	201	201	79	1,490
Victoria	225	140	0	204
Randenigala	114	84	81	990
Rantambe	50	50	37	470
Ukuwela	37	40	37	656
Bowatenna	40	38	40	132
Upper Kotmale	150	150	150	677
Nilambe	3	3	0	8
Samanalawewa	120	120	121	1,093
Kukule	75	75	77	606
Inginiyagala	11	7	4	104
Udawalawe	6	3	0	0
Puttalam Coal I	270	84	0	2,025
Puttalam Coal II	270	270	271	6,468
Puttalam Coal III	270	198	0	236
KPS Small GTs	64	0	0	0
KPS GT 7	115	115	111	1,251
KCCP	161	153	147	3,497
Sapugaskanda A	70	34	34	853
Sapugaskanda B	70	63	63	1,316
Uthura Janani	26	24	23	427
Barge CEB	60	60	61	1,255
CEB-Hambantota	30	16	18	300
CEB-Mathugama	20	12	12	197
ACE Matara	24	0	0	0
Asia Power	50	0	0	0
KCCPS -2	163	155	156	2,442
West Coast	270	270	278	6,323
Nothern Power	36	0	0	0
ACE Embilipitiya	93	0	0	0
Total	3,483	2,754	2,273	43,166

Plant availability is the availability recorded at 6 am on

July 19, 2023

## 10. Contribution to the Night Peak in MW

July 18, 2023



**Table 05**

CEB Hydro	897	MW
CEB Coal	271	MW
CEB Thermal Oil	625	MW
IPP Thermal Oil	278	MW
Mini Hydro (Telemetered)	50	MW
IPP Wind	49.7	MW
CEB Wind	92.8	MW
Biomass/ Solid Waste	11	MW

### Recorded Peak Demand Data

**Table 06**

Night Peak*	2,274	MW
Day Peak Maximum Demand	1,981	MW
Day Peak Minimum Demand	1,675	MW
Off Peak Minimum Demand	1,313	MW

Above figures are excluding contribution from roof top solar, non telemetered solar and mini hydro plants

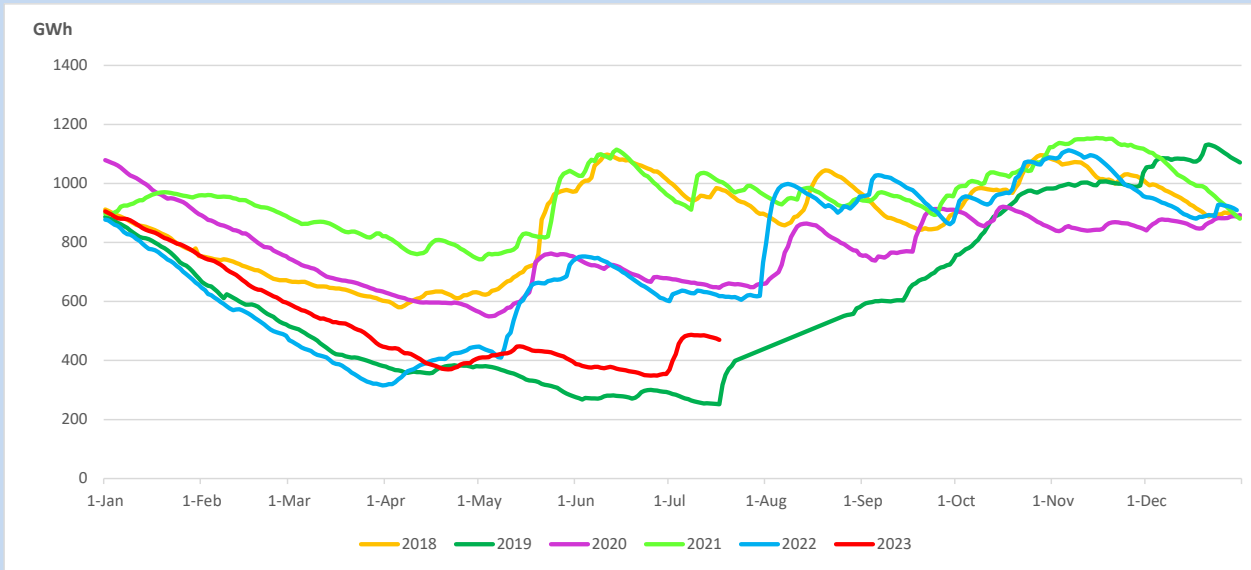
### Reservoir Levels -

as at 06.00 Hr on July 19, 2023

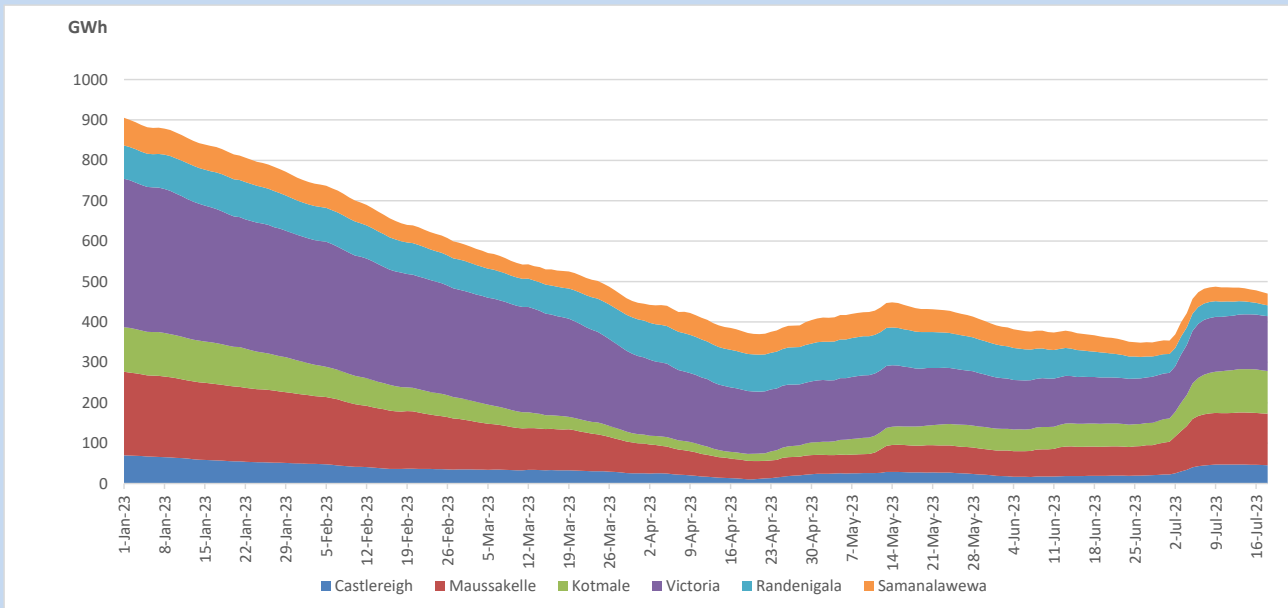


Total Reservoir Level 470 GWh  
% of Total capacity 39.0%

## 11. Comparison of Total Reservoir Storage Levels with Past Years

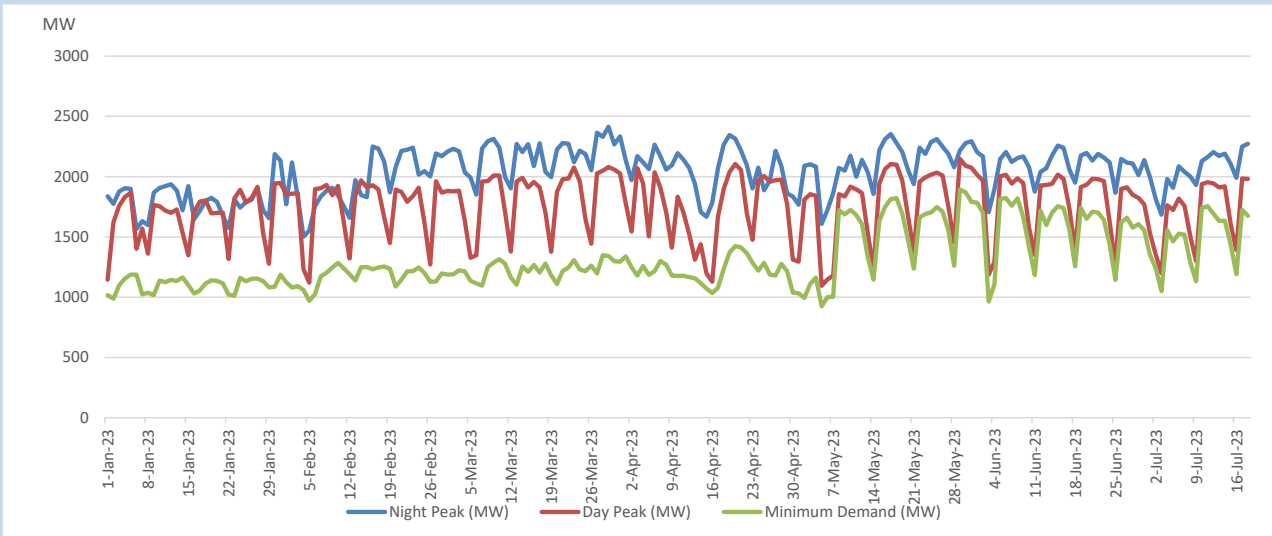


## 12. Variation of Major Hydro Reservoir Levels in the current year (GWh)





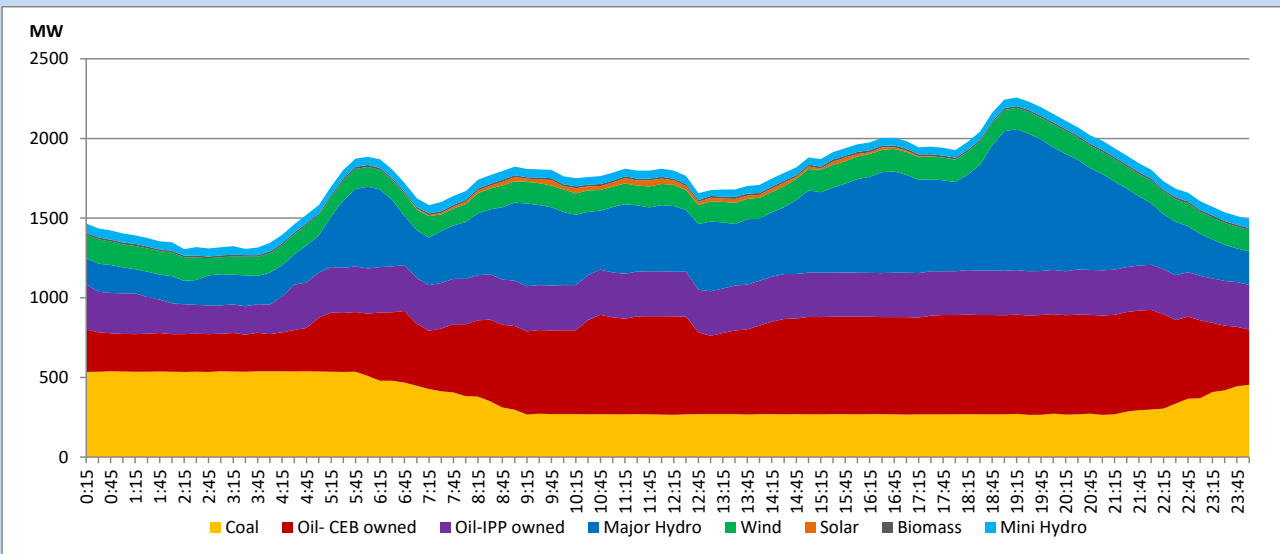
### 13. Variation of Demand during the current year



The above figures are excluding contribution from roof top solar, non telemetered solar and mini hydro plants

### 14. Daily Load Curve

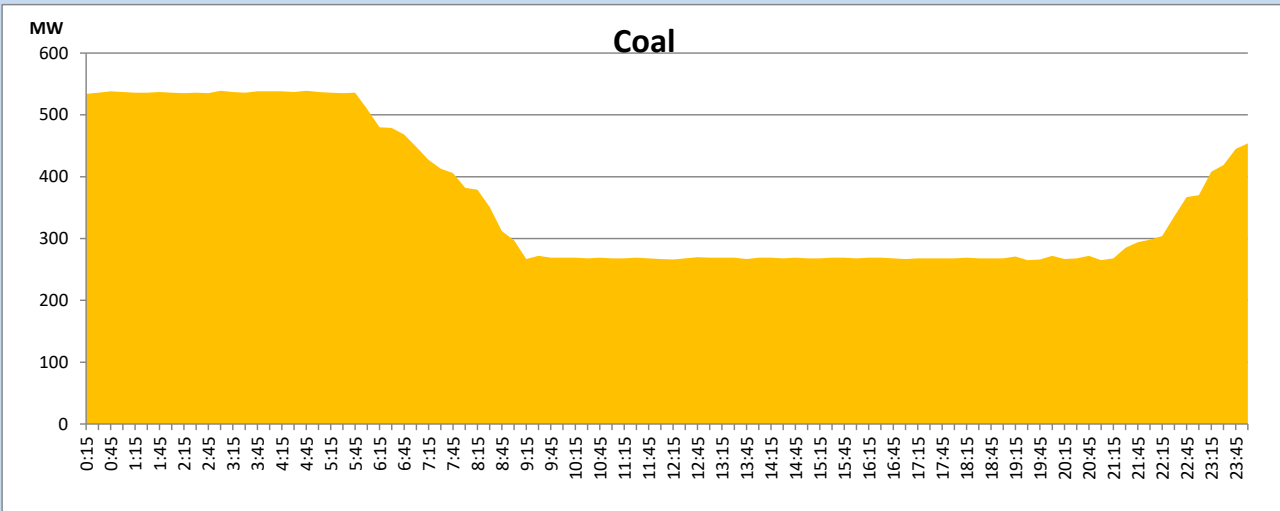
July 18, 2023



Solar and wind data is based on Telemetered Power Stations only

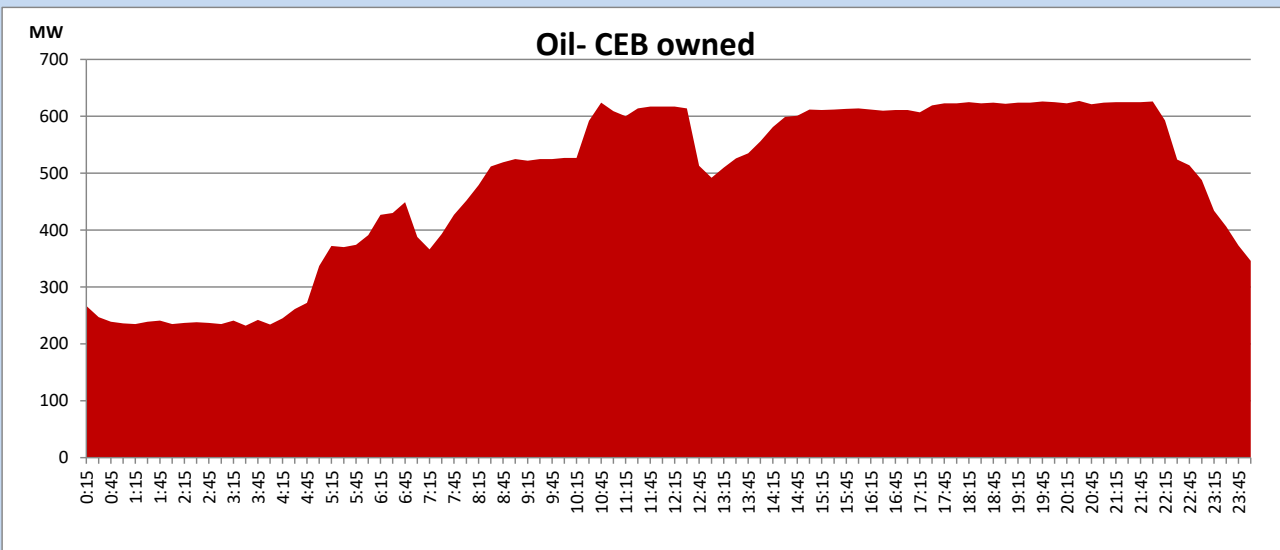
## Coal Generation during

July 18, 2023



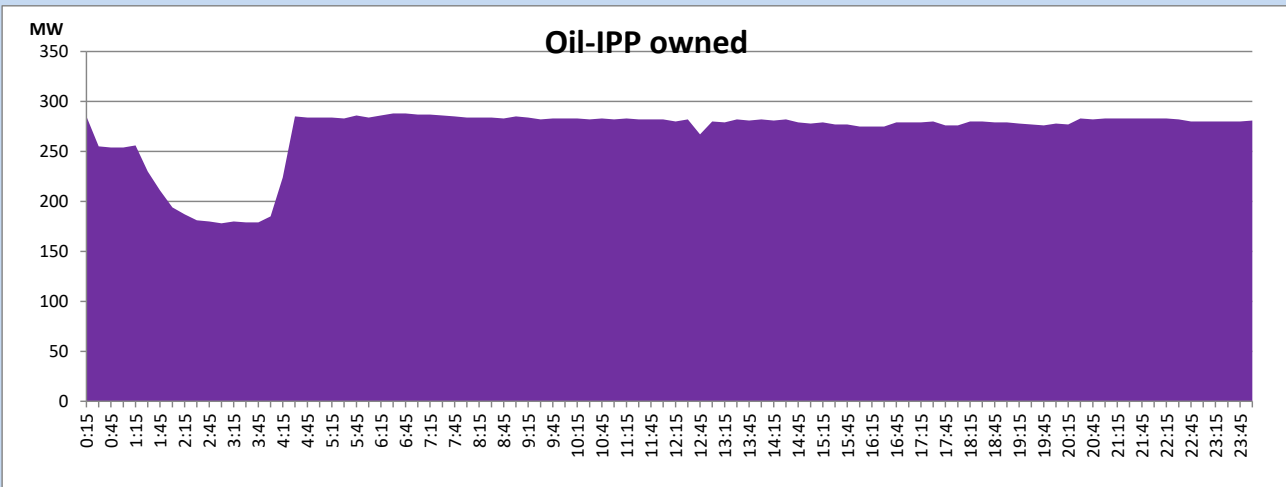
## CEB Oil Plant Generation during

July 18, 2023



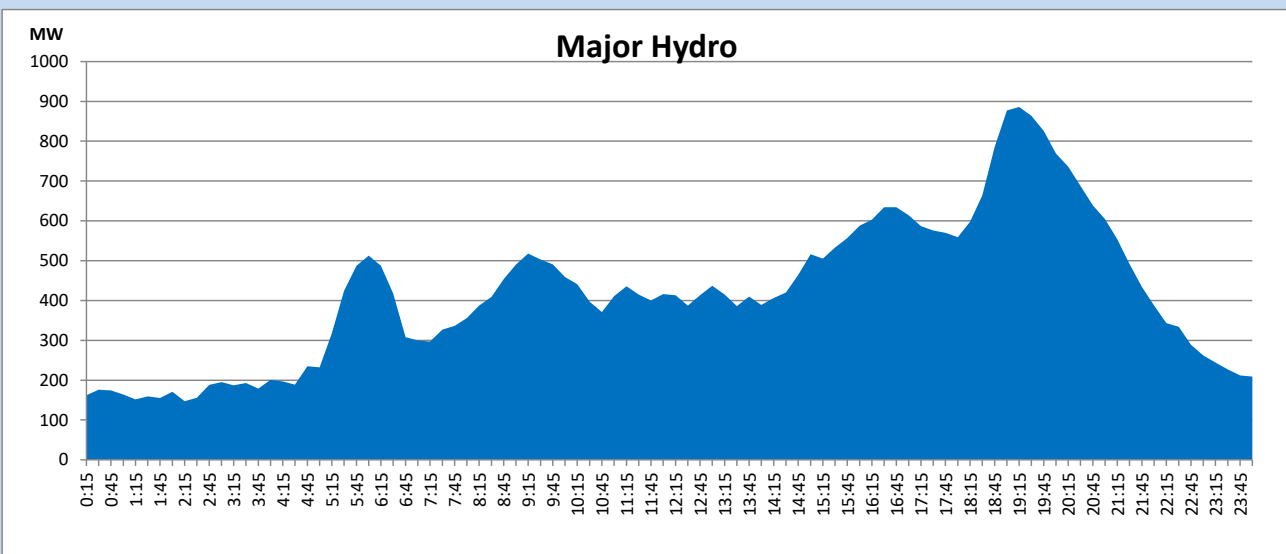
## IPP Oil Plant Generation during

July 18, 2023



## Major Hydro Generation during

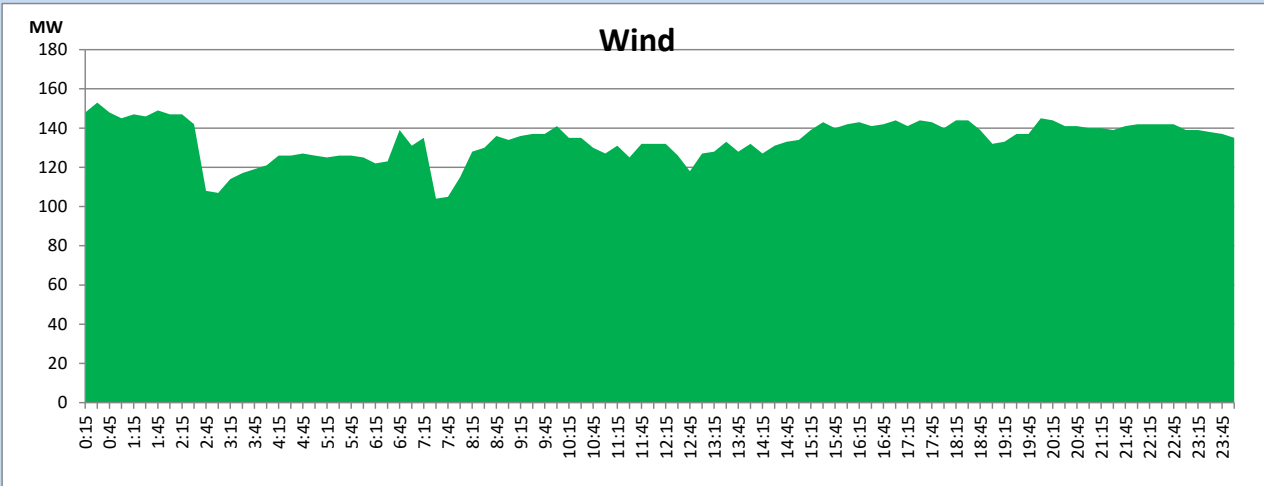
July 18, 2023



## Wind Generation during

July 18, 2023

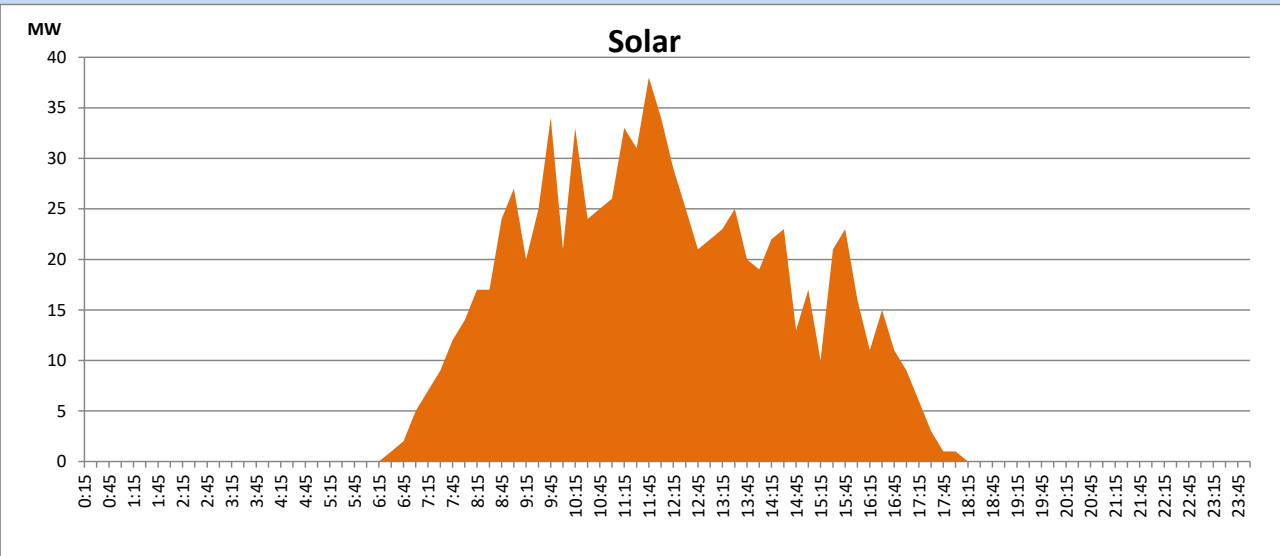
Based on Telemetered Power Stations only



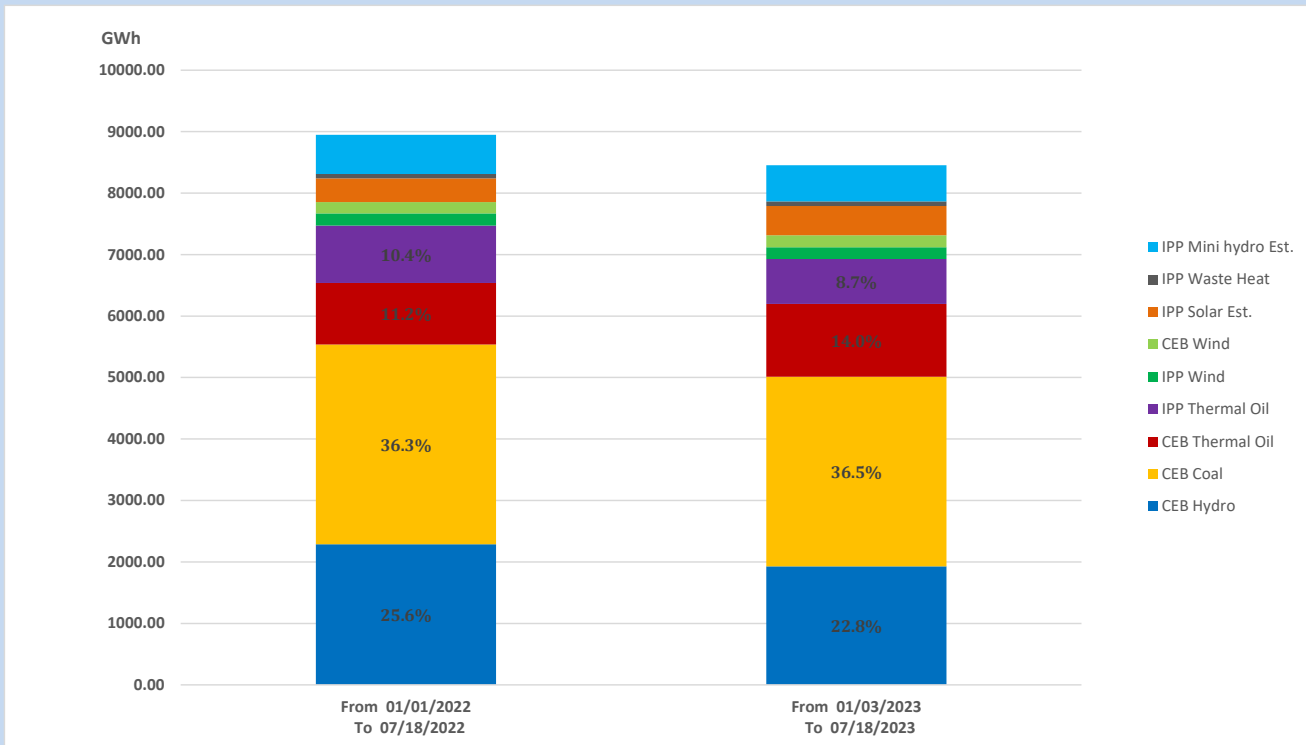
## Solar Generation during

July 18, 2023

Based on Telemetered Power Stations only



## 15. Cumulative Dispatch Comparison with Last Year



### Cumulative dispatch

From 01/01/2022 To 07/18/2022

8949 GWh

From 01/01/2023 To 07/18/2023

8453 GWh

The above figures are including contribution from roof top solar, non telemetered solar and mini hydro plants

**Thermal Plant Fuel types**

Power Station	Primary Fuel
<b>CEB Thermal</b>	
<b>Sapugaskanda 1</b>	Heavy Fuel
<b>Sapugaskanda 2</b>	Heavy Fuel
<b>Kelanitissa Small Gas Turbines</b>	Auto Diesel
<b>GT 7 - Kelanitissa</b>	Auto Diesel
<b>Kelanitissa CCY</b>	Naphtha or Diesel
<b>Lakvijaya 1</b>	Coal
<b>Lakvijaya 2</b>	Coal
<b>Lakvijaya 3</b>	Coal
<b>Uthuru Janani</b>	Heavy Fuel
<b>Barge CEB</b>	Heavy Fuel
<b>KCCPS -2</b>	Auto Diesel

Power Station	Primary Fuel
<b>Private Thermal</b>	
<b>West Coast</b>	Auto Diesel / Heavy Fuel

**Major Incidents reported during the day**

July 18, 2023

- 1) Kotugoda-Veyangoda 220kV cct 01 tripped and A/R from both ends at 12:37hrs due to the operation of distance protection. At the same time, KCCPS2 ST tripped rejecting 55MW from the system due to the disturbance caused by the fault occurred in Kotugoda-Veyangoda cct 01.
- 2) LVPS Unit 01 performed a forced shutdown and desynchronized from the system at 09:04hrs due to a boiler tube steam leakage.
- 3) LVPS Unit 03 synchronized at 21:16hrs and reached 198MW(net) by 00:14hrs(19.07.2023).