

# Generation and Reservoirs Statistics

July 15, 2023



PUBLIC UTILITIES COMMISSION OF SRI LANKA

## 1. Daily Generation Mix in MWh

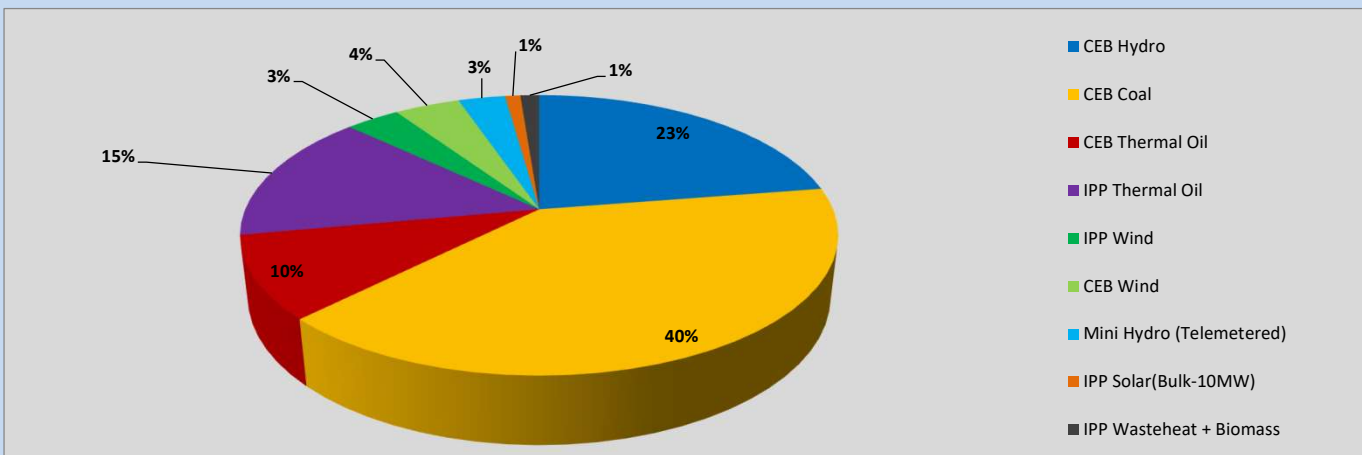


Table 01

CEB Hydro	8,643	MWh
CEB Coal	15,358	MWh
CEB Thermal Oil	3,668	MWh
IPP Thermal Oil	5,738	MWh
IPP Wind	1,347	MWh
CEB Wind	1,624	MWh
Mini Hydro (Telemetered)	1,163	MWh
IPP Solar (Bulk)	382	MWh
IPP Wasteheat + Biomass	467	MWh
<b>Total Generation (Excluding estimated figures)</b>	<b>38,390</b>	<b>MWh</b>
* Estimated unserved energy	0	MWh
* Estimated Mini Hydro (Non telemetered)	2347	MWh
* Estimated IPP Solar PV (Bulk 1-10MW)	304	MWh
* Estimated Solar Roof Top PV	1650	MWh
<b>Total Generation (Including estimated figures)</b>	<b>42,691</b>	<b>MWh</b>

\* Estimated figures of CEB generation report

## 2. Cumulative Dispatch

Following data excludes the contribution from roof top solar, non telemetered solar and mini hydro plants

Table 02 - Current Month

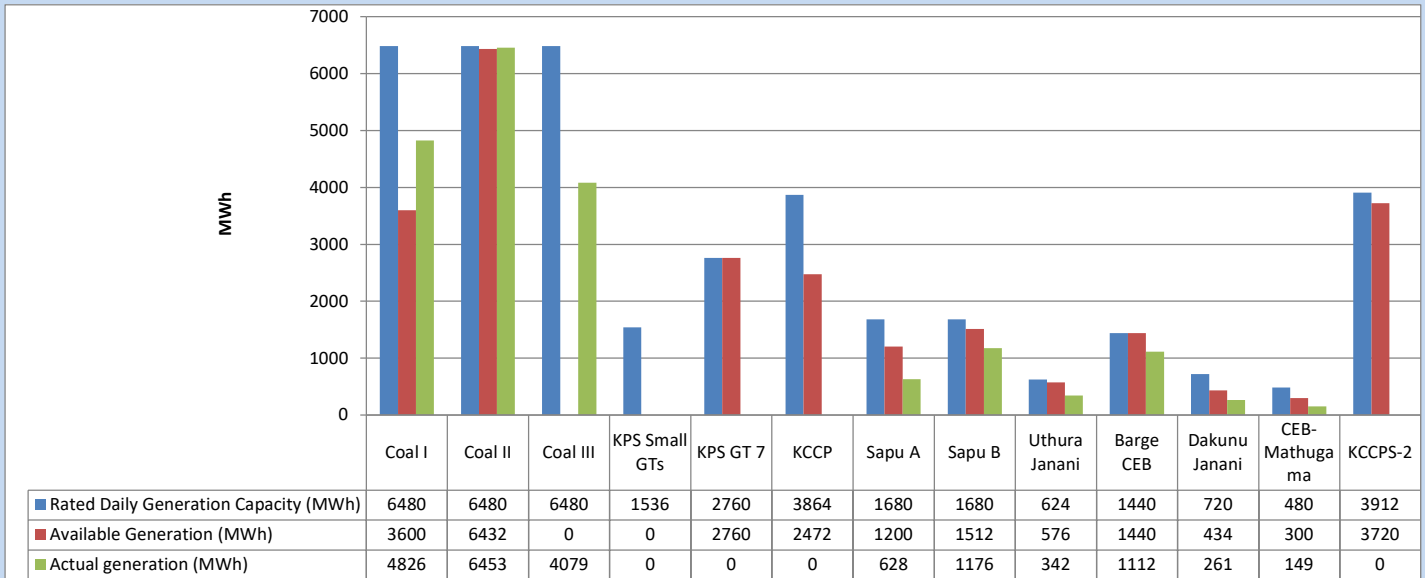
Category	Dispatch (GWh)	
CEB Hydro	168	29.72%
CEB Coal	171	30.25%
CEB Thermal Oil	79	13.97%
IPP Thermal	63	11.13%
SPP Wind	27	4.79%
CEB Wind	25	4.36%
Mini Hydro (Telemetered)	23	4.03%
IPP Solar (Bulk-10MW)	5	0.80%
IPP Wasteheat + BMP	5	0.95%
<b>Total</b>	<b>564</b>	

Table 03 - Current Year

Category	Dispatch (GWh)	
CEB Hydro	1,905	25.35%
CEB Coal	3,053	40.62%
CEB Thermal Oil	1,162	15.46%
IPP Thermal	717	9.54%
SPP Wind	178	2.37%
CEB Wind	189	2.51%
Mini Hydro (Telemetered)	189	2.51%
IPP Solar (Bulk-10MW)	58	0.77%
IPP Wasteheat	65	0.87%
<b>Total</b>	<b>7,517</b>	

### 3. CEB owned Thermal Plant Dispatch

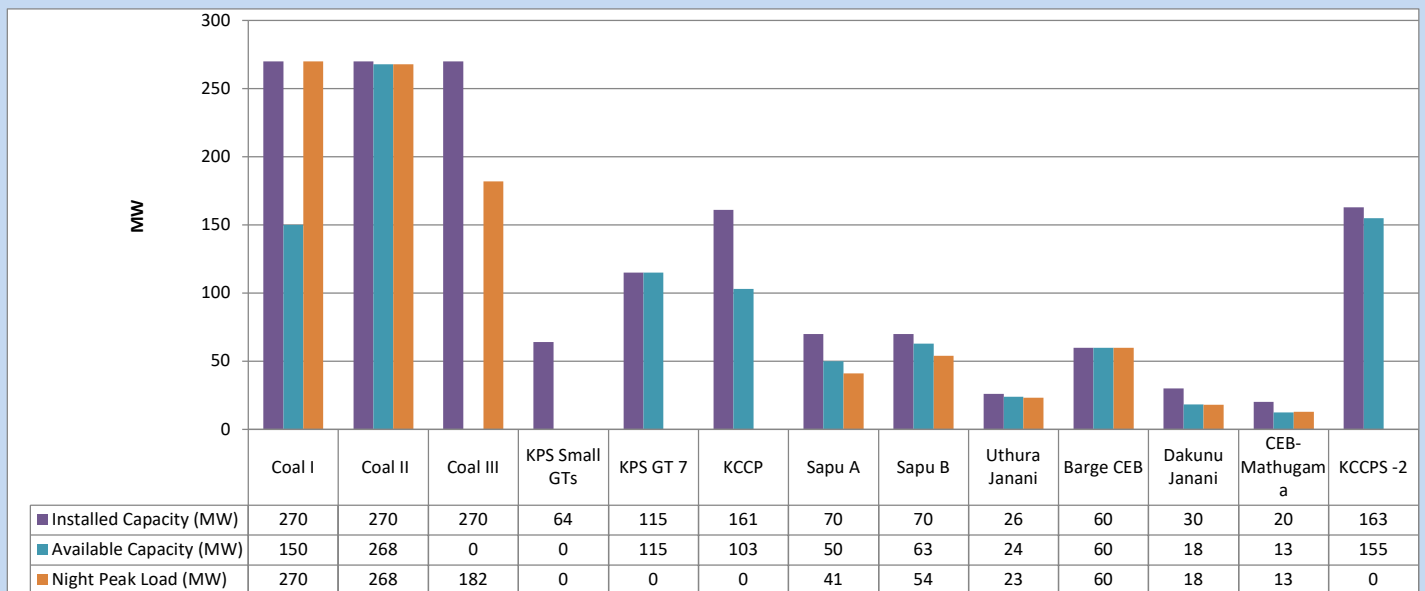
July 15, 2023



Available Generation is estimated based on plant availability at 6.00am on

July 16, 2023

### 4. CEB owned Thermal Plant Loading at the Night Peak

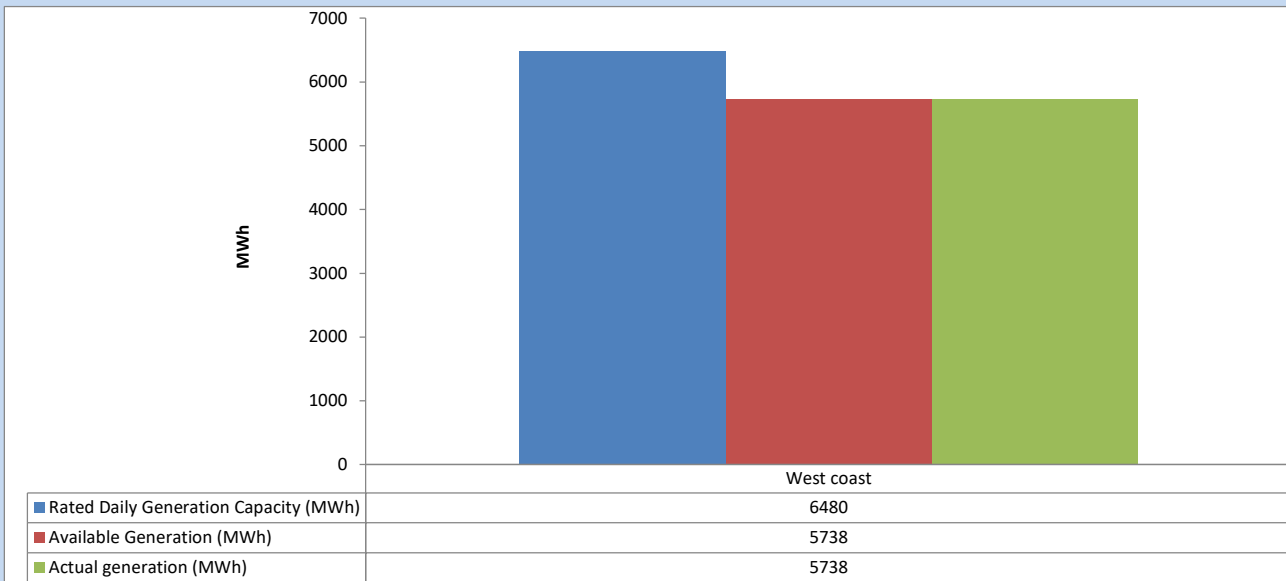


Plant availability is recorded at 6.00 am on

July 16, 2023

## 5. IPP owned Thermal Plant Dispatch

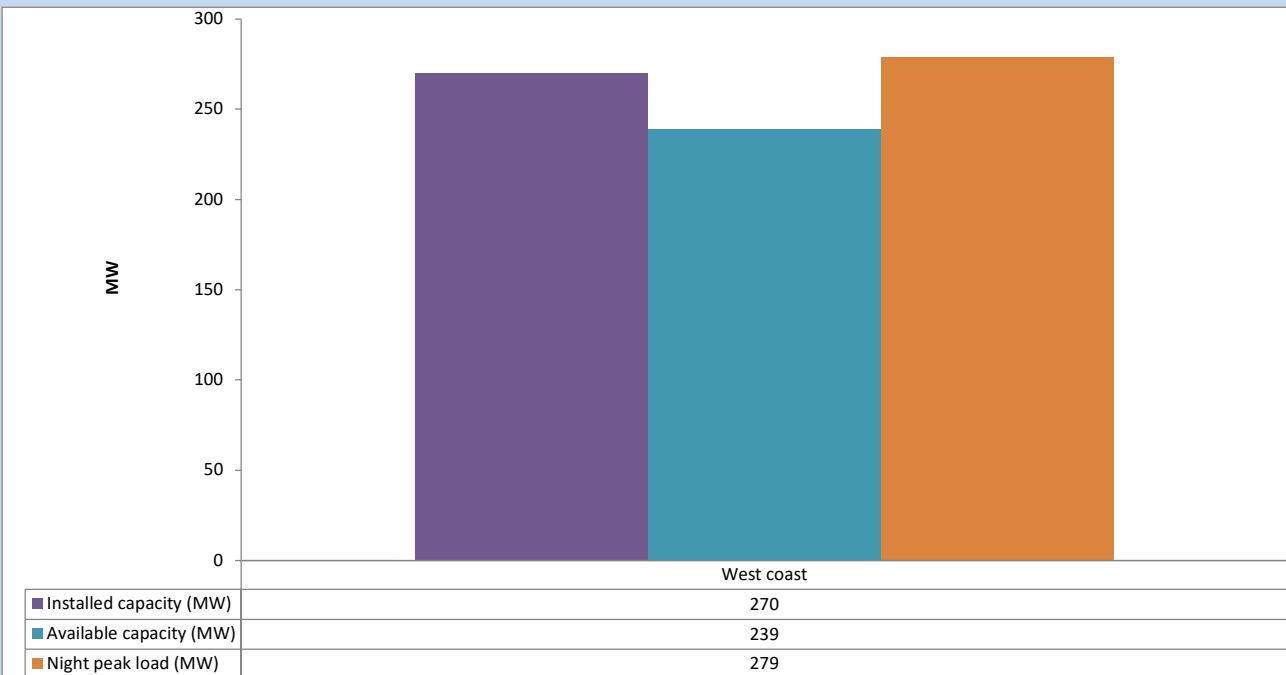
July 15, 2023



Available Generation is estimated based on plant availability at 6.00am on

July 16, 2023

## 6. IPP owned Thermal Plant Loading at the Night Peak

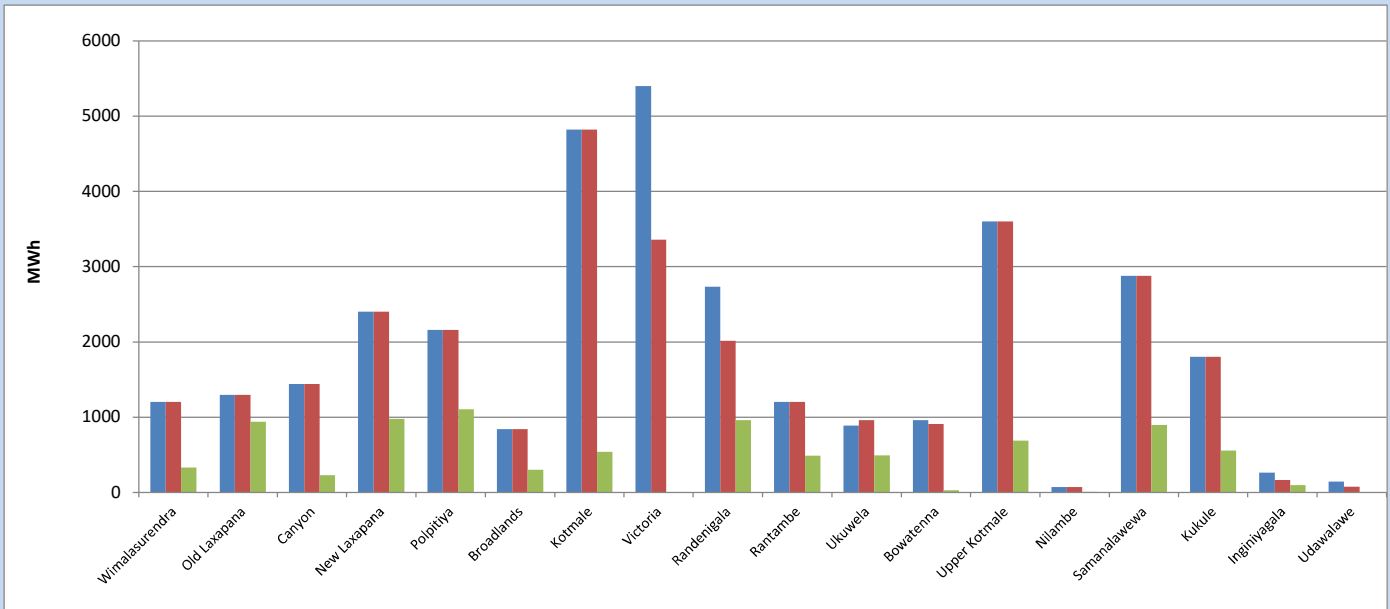


Plant availability is recorded at 6.00 am on

July 16, 2023

## 7. Major Hydro Plant Dispatch

July 15, 2023

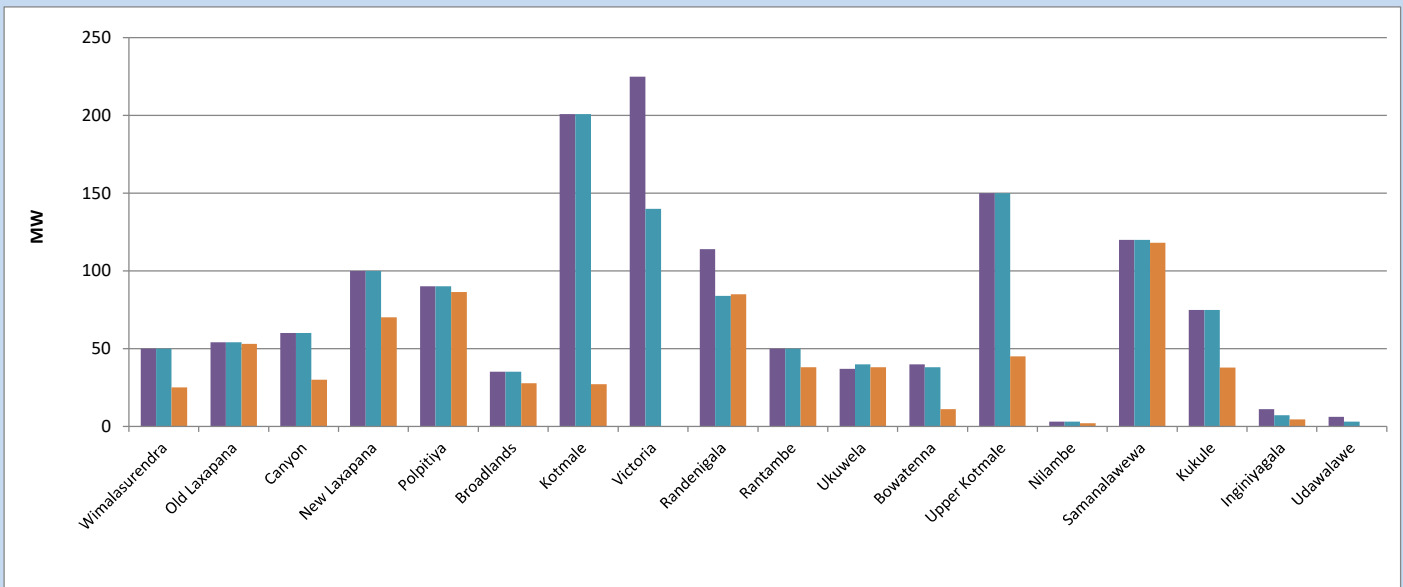


Available Generation is estimated based on plant availability at 6.00am on  
Broadlands power plant is operating in the Commissioning Stage

July 16, 2023

## 8. Major Hydro Plant Loading at Night Peak

July 15, 2023



Plant availability is recorded at 6.00 am on  
Broadlands power plant is operating in the Commissioning Stage

July 16, 2023

## 9. Summary of Major Plant performance

**Table 04**

Plant	Installed Capacity	Plant Availability	Night peak Load	Plant Dispatch
	(MW)	(MW)	(MW)	(MWh)
Wimalasurendra	50	50	25	331
Old Laxapana	54	54	53	938
Canyon	60	60	30	227
New Laxapana	100	100	70	978
Polpitiya	90	90	87	1,108
Broadlands	35	35	28	302
Kotmale	201	201	27	540
Victoria	225	140	0	0
Randenigala	114	84	85	960
Rantambe	50	50	38	487
Ukuwela	37	40	38	495
Bowatenna	40	38	11	29
Upper Kotmale	150	150	45	686
Nilambe	3	3	2	9
Samanalawewa	120	120	118	894
Kukule	75	75	38	559
Inginiyagala	11	7	4	100
Udawalawe	6	3	0	0
Puttalam Coal I	270	150	270	4,826
Puttalam Coal II	270	268	268	6,453
Puttalam Coal III	270	0	182	4,079
KPS Small GTs	64	0	0	0
KPS GT 7	115	115	0	0
KCCP	161	103	0	0
Sapugaskanda A	70	50	41	628
Sapugaskanda B	70	63	54	1,176
Uthura Janani	26	24	23	342
Barge CEB	60	60	60	1,112
CEB-Hambantota	30	18	18	261
CEB-Mathugama	20	13	13	149
ACE Matara	24	0	0	0
Asia Power	50	0	0	0
KCCPS -2	163	155	0	0
West Coast	270	239	279	5,738
Nothern Power	36	0	0	0
ACE Embilipitiya	93	0	0	0
<b>Total</b>	<b>3,483</b>	<b>2,558</b>	<b>2,105</b>	<b>38,390</b>

Plant availability is the availability recorded at 6 am on

July 16, 2023

## 10. Contribution to the Night Peak in MW

July 15, 2023

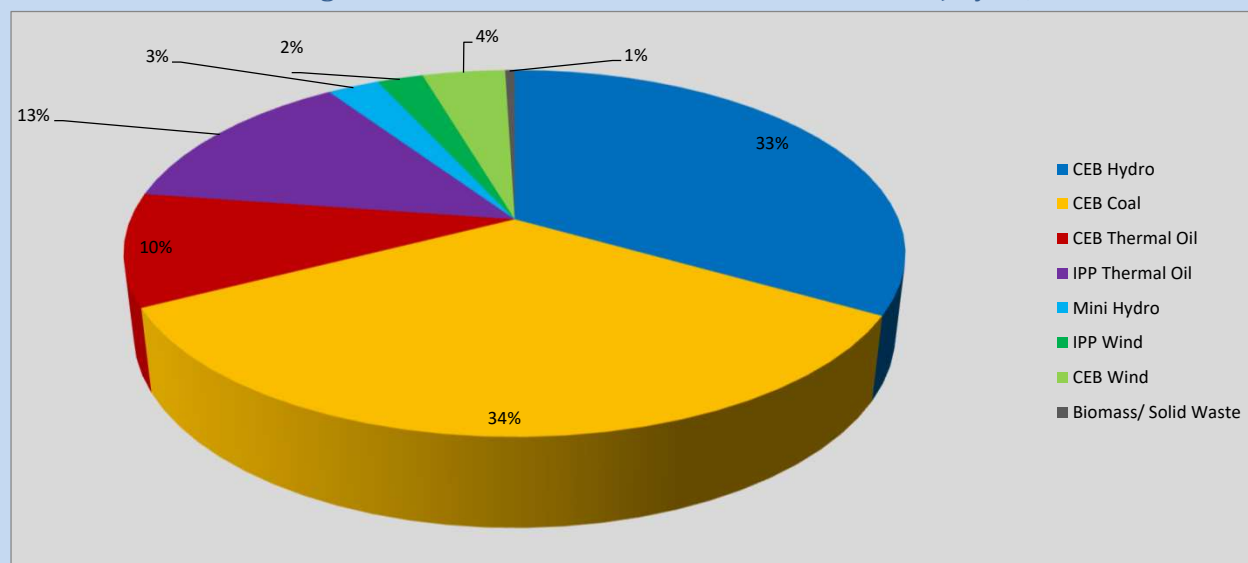


Table 05

CEB Hydro	701 MW
CEB Coal	720 MW
CEB Thermal Oil	209 MW
IPP Thermal Oil	279 MW
Mini Hydro (Telemetered)	54 MW
IPP Wind	48.3 MW
CEB Wind	86.2 MW
Biomass/ Solid Waste	10 MW

### Recorded Peak Demand Data

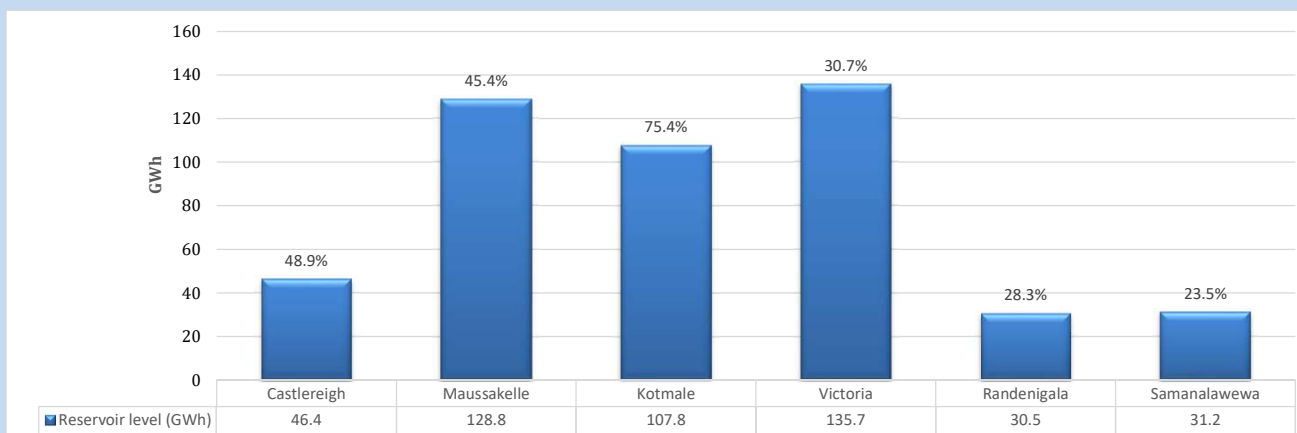
Table 06

Night Peak*	2,107 MW
Day Peak Maximum Demand	1,609 MW
Day Peak Minimum Demand	1,439 MW
Off Peak Minimum Demand	1,291 MW

Above figures are excluding contribution from roof top solar, non telemetered solar and mini hydro plants

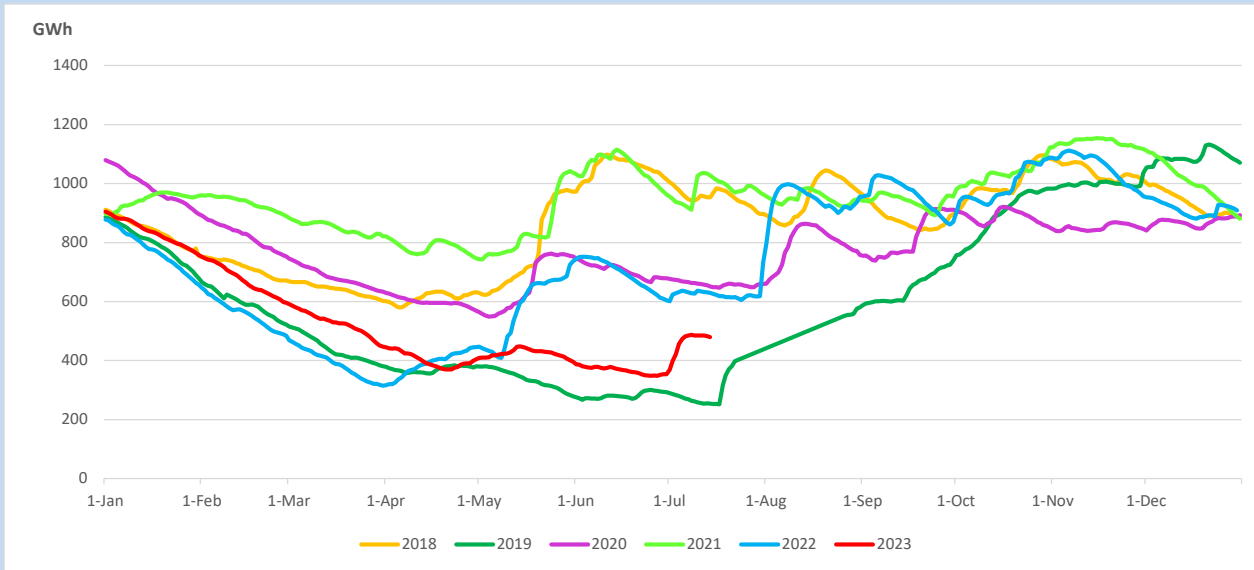
### Reservoir Levels -

as at 06.00 Hr on July 16, 2023

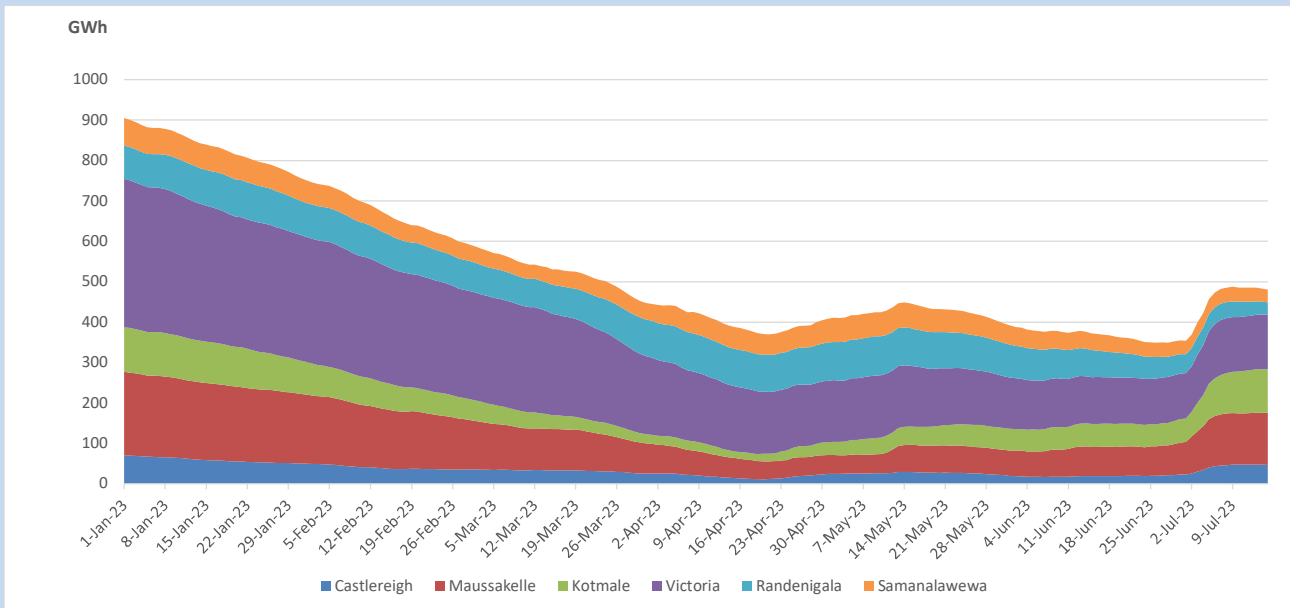


Total Reservoir Level 480.4 GWh  
 % of Total capacity 39.9%

## 11. Comparison of Total Reservoir Storage Levels with Past Years

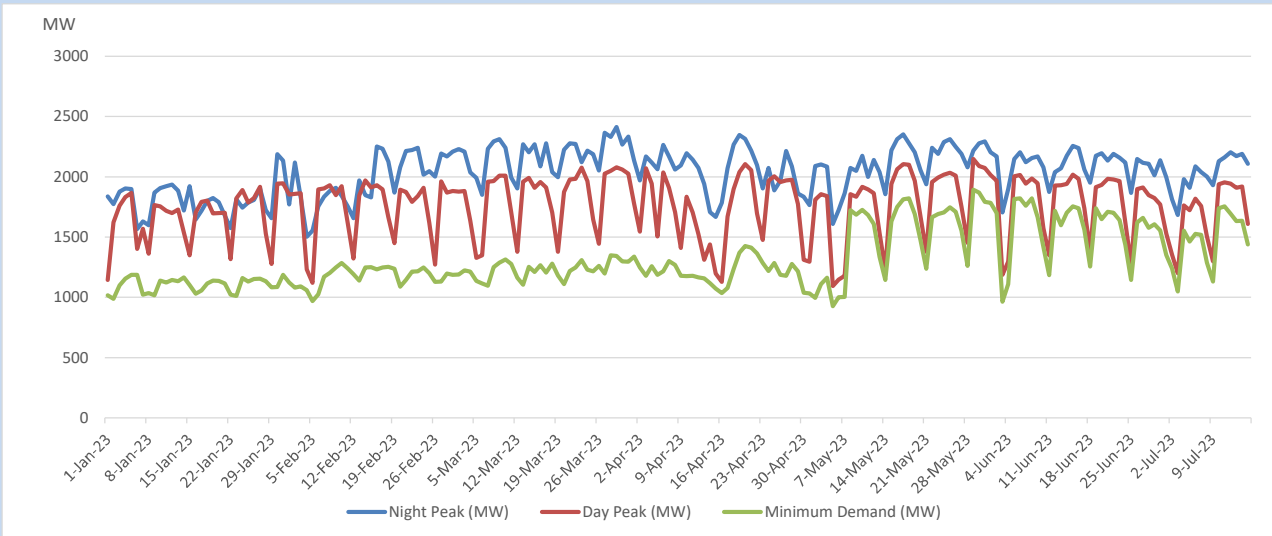


## 12. Variation of Major Hydro Reservoir Levels in the current year (GWh)





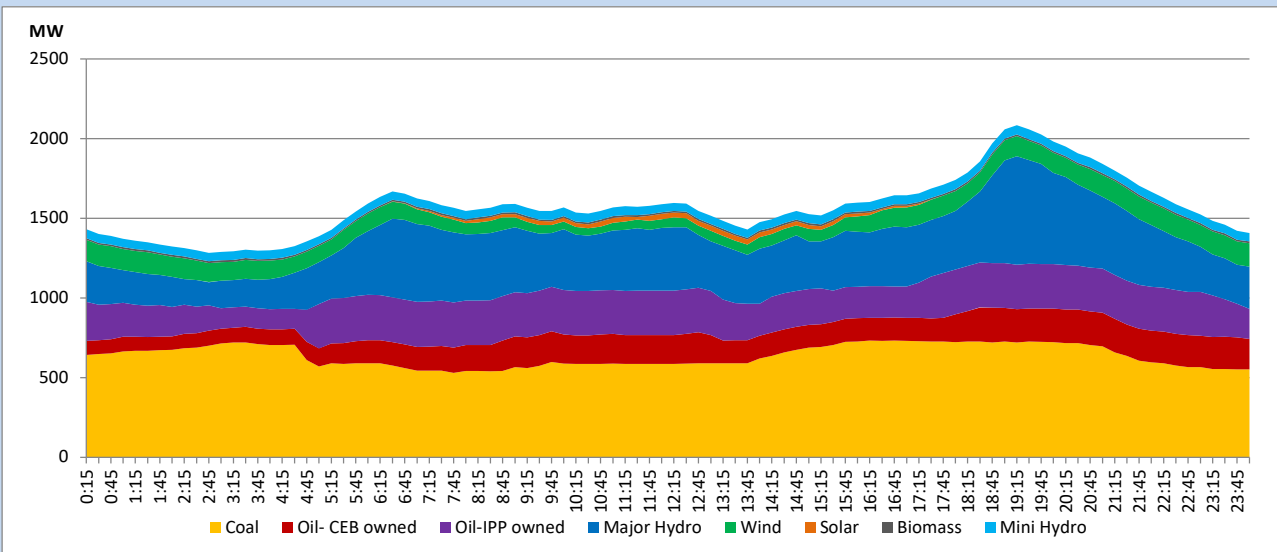
### 13. Variation of Demand during the current year



The above figures are excluding contribution from roof top solar, non telemetered solar and mini hydro plants

### 14. Daily Load Curve

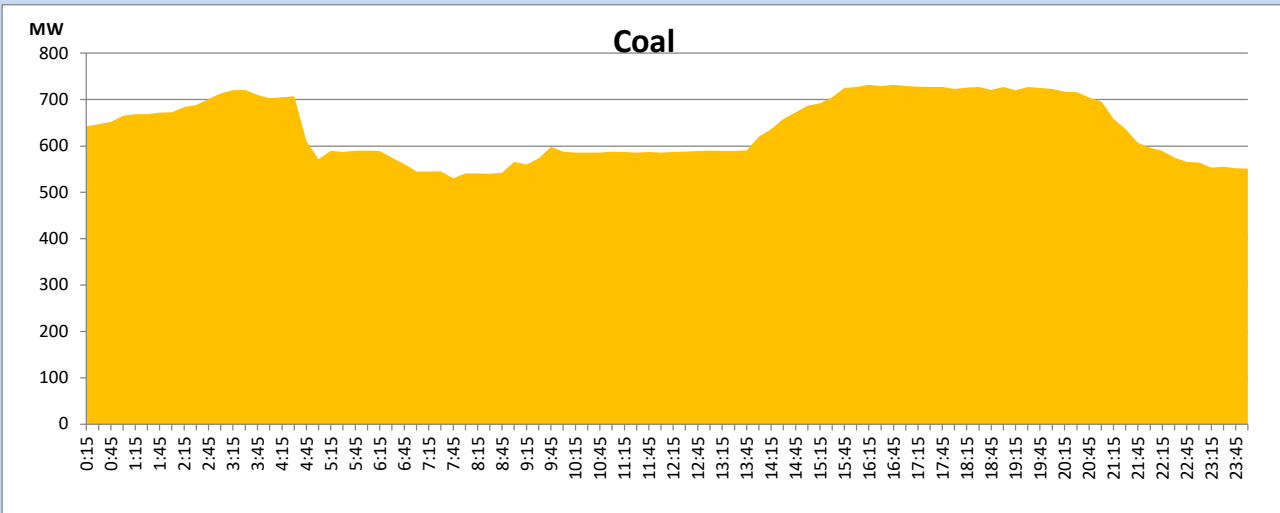
July 15, 2023



Solar and wind data is based on Telemetered Power Stations only

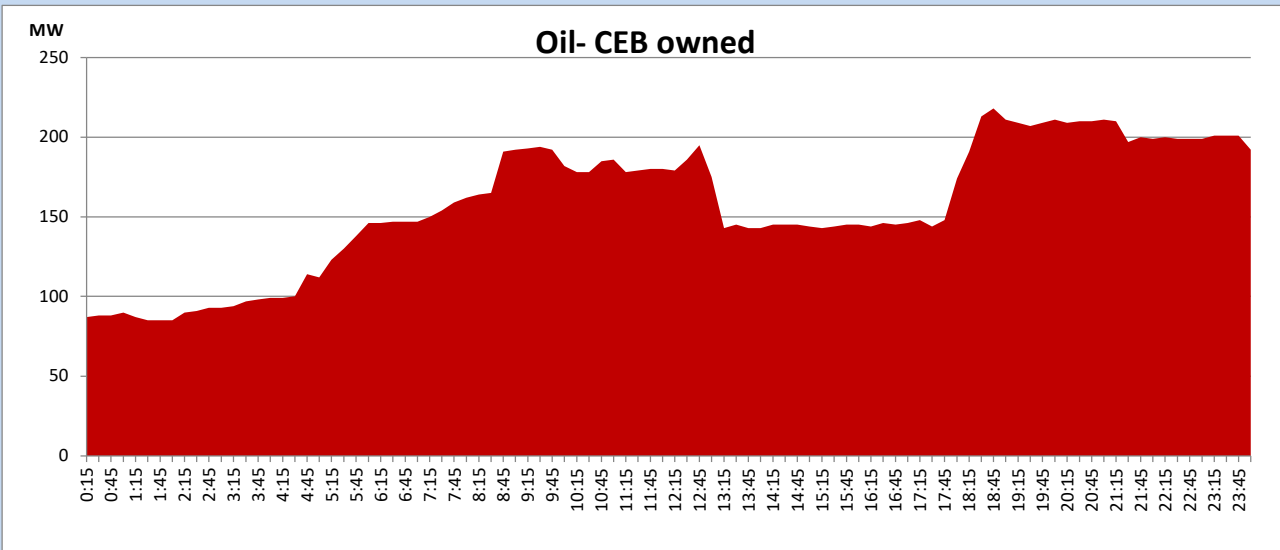
## Coal Generation during

July 15, 2023



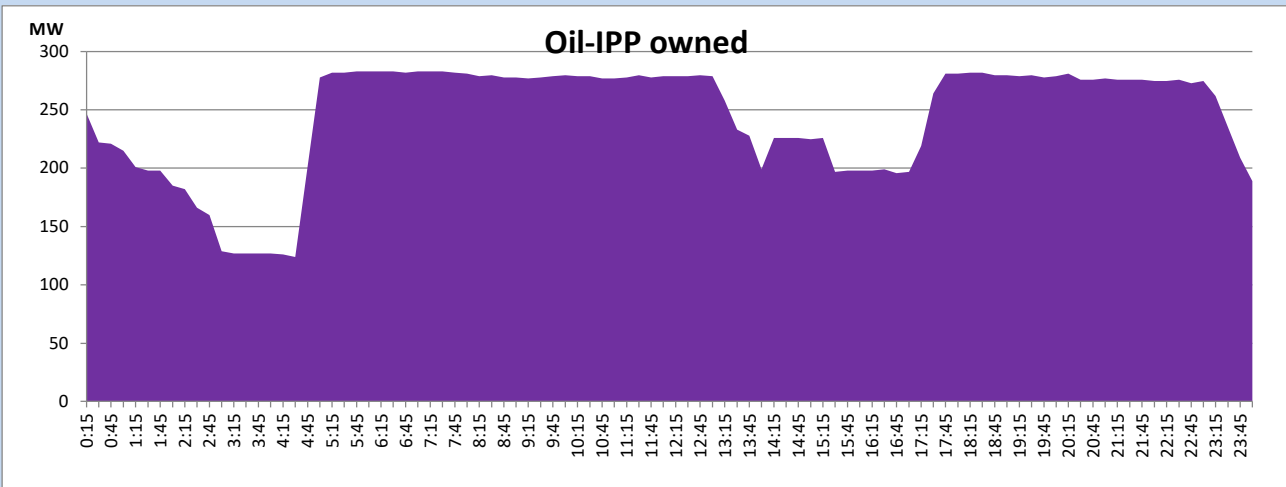
## CEB Oil Plant Generation during

July 15, 2023



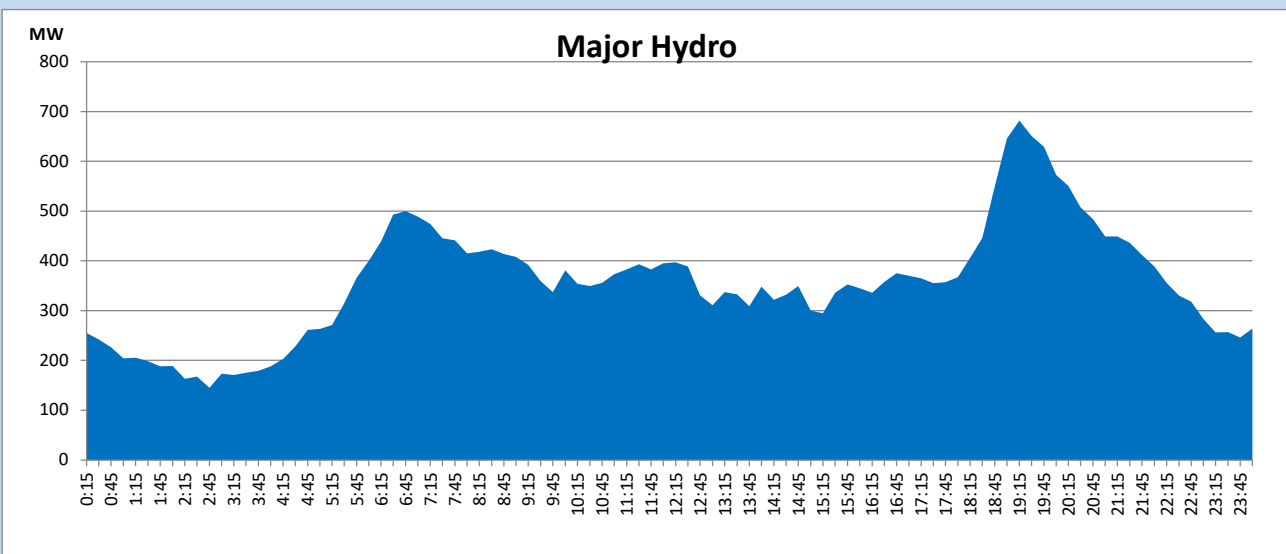
## IPP Oil Plant Generation during

July 15, 2023



## Major Hydro Generation during

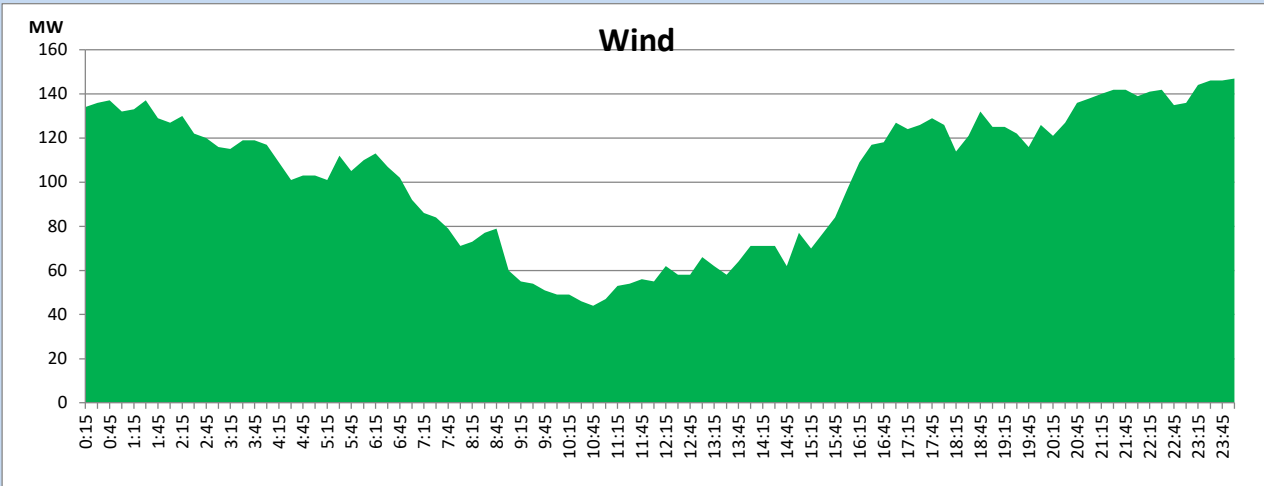
July 15, 2023



## Wind Generation during

July 15, 2023

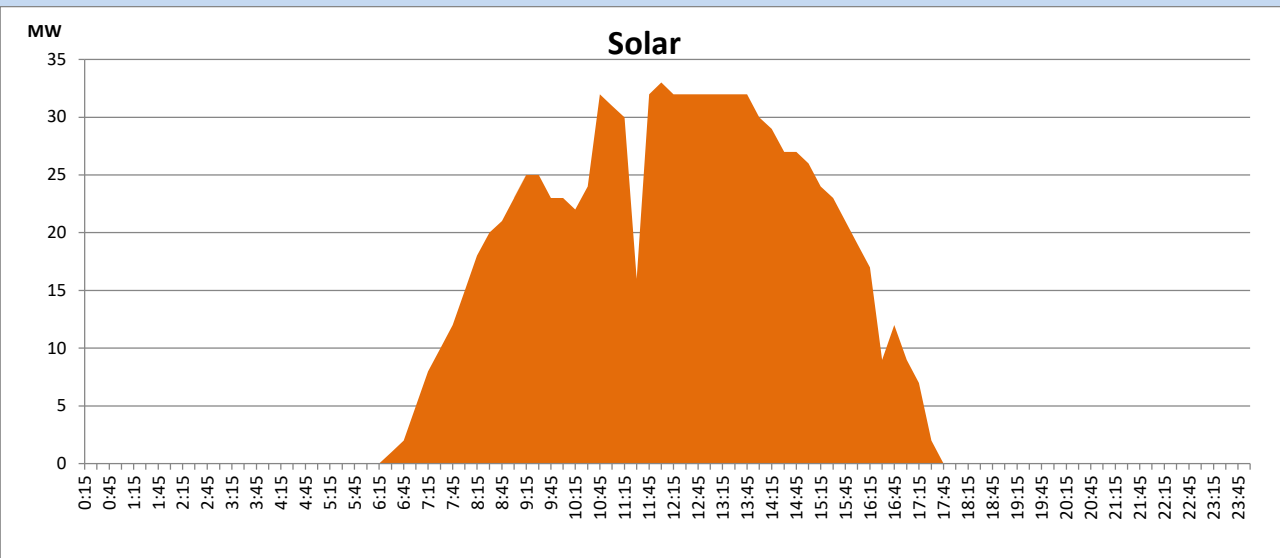
Based on Telemetered Power Stations only



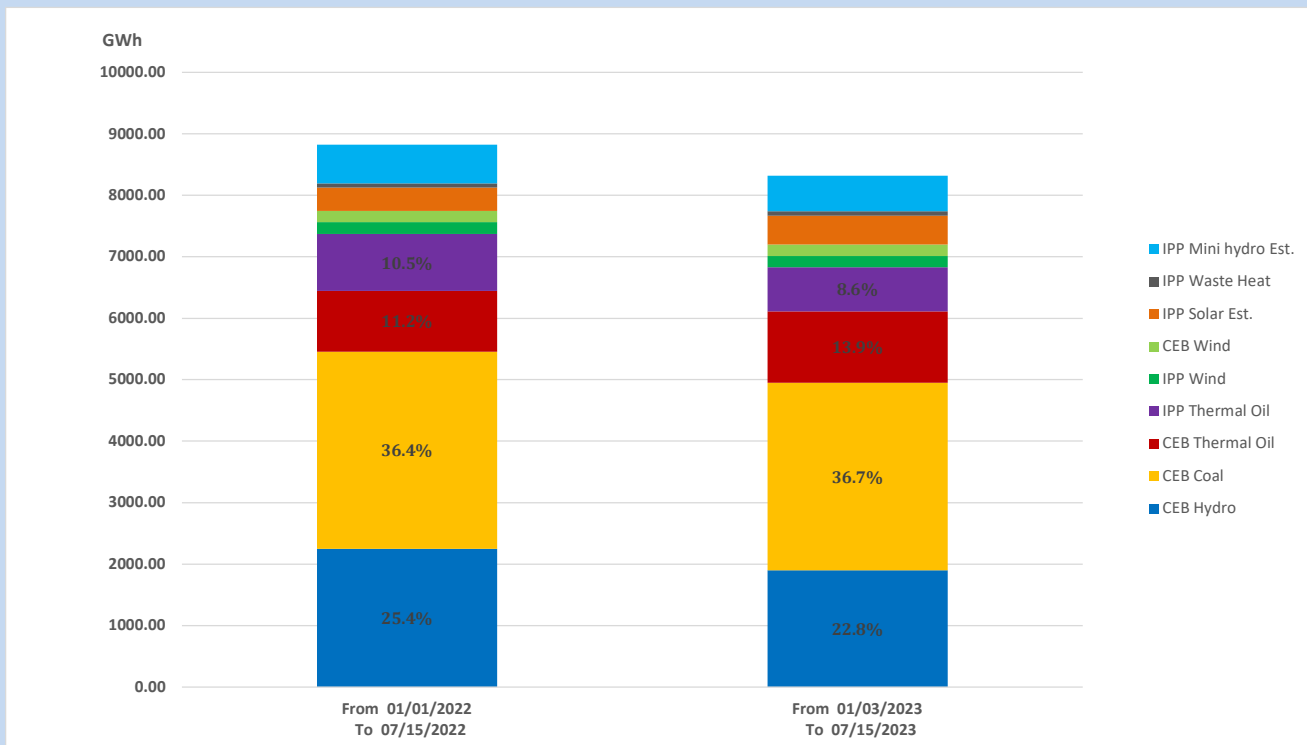
## Solar Generation during

July 15, 2023

Based on Telemetered Power Stations only



## 15. Cumulative Dispatch Comparison with Last Year



### Cumulative dispatch

From 01/01/2022 To 07/15/2022

8822 GWh

From 01/01/2023 To 07/15/2023

8319 GWh

The above figures are including contribution from roof top solar, non telemetered solar and mini hydro plants

**Thermal Plant Fuel types**

Power Station	Primary Fuel
<b>CEB Thermal</b>	
<b>Sapugaskanda 1</b>	Heavy Fuel
<b>Sapugaskanda 2</b>	Heavy Fuel
<b>Kelanitissa Small Gas Turbines</b>	Auto Diesel
<b>GT 7 - Kelanitissa</b>	Auto Diesel
<b>Kelanitissa CCY</b>	Naphtha or Diesel
<b>Lakvijaya 1</b>	Coal
<b>Lakvijaya 2</b>	Coal
<b>Lakvijaya 3</b>	Coal
<b>Uthuru Janani</b>	Heavy Fuel
<b>Barge CEB</b>	Heavy Fuel
<b>KCCPS -2</b>	Auto Diesel

Power Station	Primary Fuel
<b>Private Thermal</b>	
<b>West Coast</b>	Auto Diesel / Heavy Fuel

**Major Incidents reported during the day**

July 15, 2023

- 1) Bolawatta-Katunayake-N/Chilaw 132kV cct tripped from all ends at 11:36hrs due to the operation of distance protection. At the same time Katunayake-Kotugoda 132kV cct 01 tripped and A/R from Katunayake end due to the operation of distance protection. Bolawatta-Katunayake-N/Chilaw 132kV cct was normalized at 11:50hrs.
- 2) LVPS Unit 01 reached 270MW (net) at 15:45hrs. LVPS Unit 01 ran back to 150MW(net) at 05:57hrs (16.07.2023) due to tripping of an ID fan.
- 3) Restoration trial of LVPS from Upper Kotmale PS was carried out by shutting down LVPS Unit 03 via Upper Kotmale system at 00:37hrs( 16.07.2023).