

Generation and Reservoirs Statistics

July 14, 2023



PUBLIC UTILITIES COMMISSION OF SRI LANKA

1. Daily Generation Mix in MWh

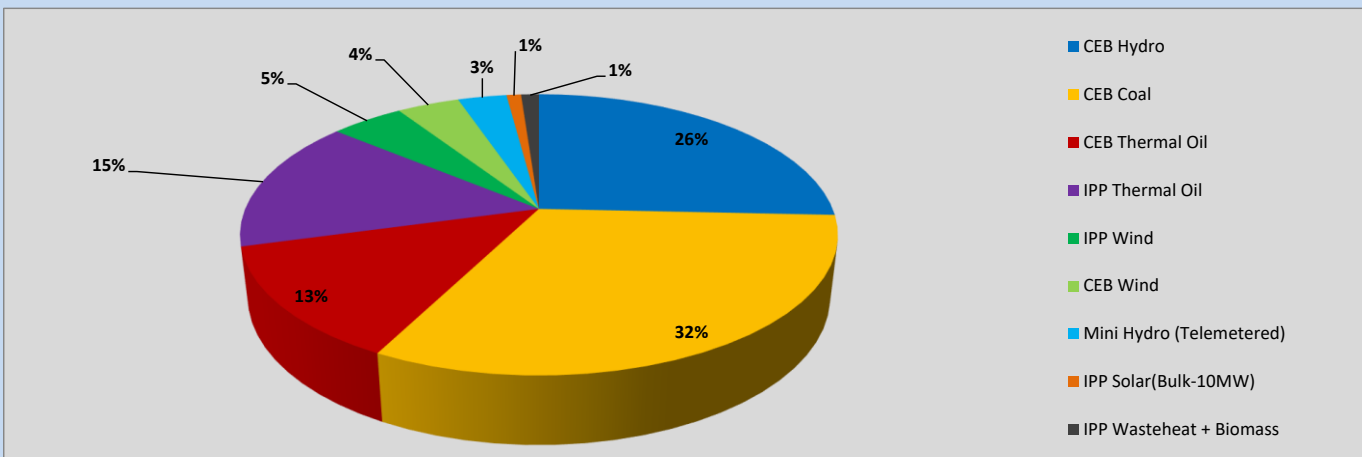


Table 01

CEB Hydro	10,681	MWh
CEB Coal	13,255	MWh
CEB Thermal Oil	5,472	MWh
IPP Thermal Oil	6,336	MWh
IPP Wind	1,961	MWh
CEB Wind	1,677	MWh
Mini Hydro (Telemetered)	1,312	MWh
IPP Solar (Bulk)	392	MWh
IPP Wasteheat + Biomass	478	MWh
Total Generation (Excluding estimated figures)	41,564	MWh
* Estimated unserved energy	0	MWh
* Estimated Mini Hydro (Non telemetered)	2198	MWh
* Estimated IPP Solar PV (Bulk 1-10MW)	304	MWh
* Estimated Solar Roof Top PV	1650	MWh
Total Generation (Including estimated figures)	45,716	MWh

* Estimated figures of CEB generation report

2. Cumulative Dispatch

Following data excludes the contribution from roof top solar, non telemetered solar and mini hydro plants

Table 02 - Current Month

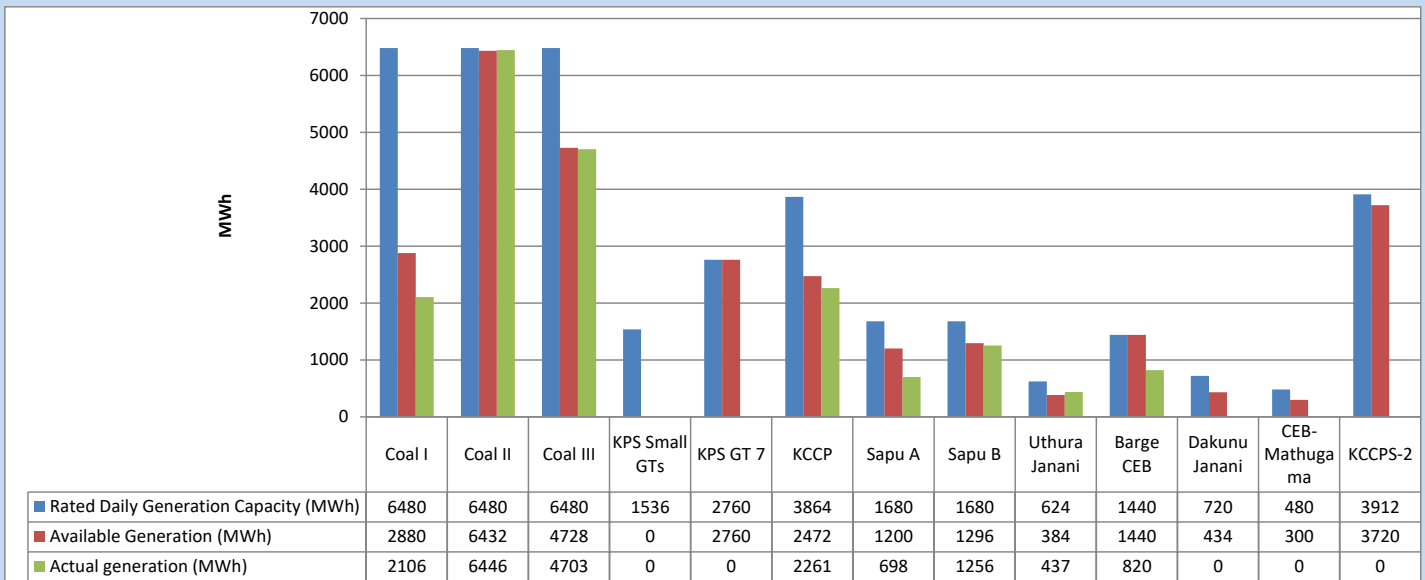
Category	Dispatch (GWh)	
CEB Hydro	159	30.24%
CEB Coal	155	29.54%
CEB Thermal Oil	75	14.29%
IPP Thermal	57	10.85%
SPP Wind	26	4.88%
CEB Wind	23	4.37%
Mini Hydro (Telemetered)	22	4.11%
IPP Solar (Bulk-10MW)	4	0.79%
IPP Wasteheat + BMP	5	0.93%
Total	525	

Table 03 - Current Year

Category	Dispatch (GWh)	
CEB Hydro	1,897	25.36%
CEB Coal	3,038	40.63%
CEB Thermal Oil	1,159	15.49%
IPP Thermal	711	9.51%
SPP Wind	177	2.36%
CEB Wind	187	2.50%
Mini Hydro (Telemetered)	187	2.51%
IPP Solar (Bulk-10MW)	57	0.76%
IPP Wasteheat	65	0.87%
Total	7,478	

3. CEB owned Thermal Plant Dispatch

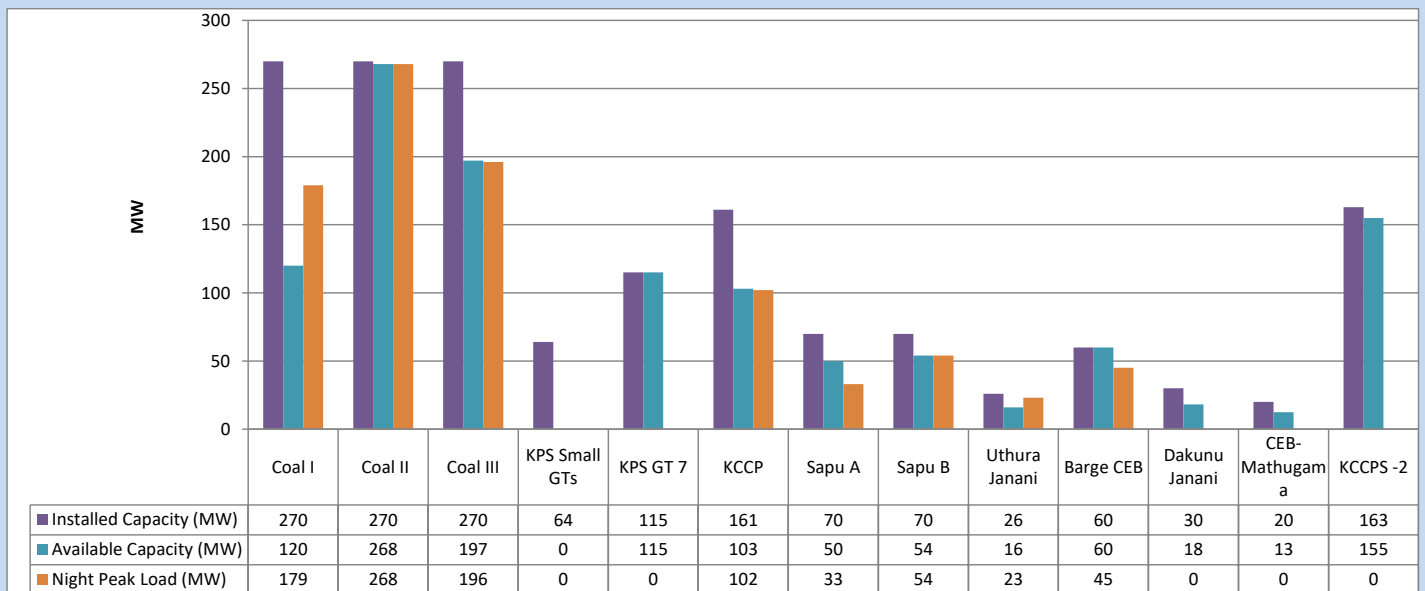
July 14, 2023



Available Generation is estimated based on plant availability at 6.00am on

July 15, 2023

4. CEB owned Thermal Plant Loading at the Night Peak

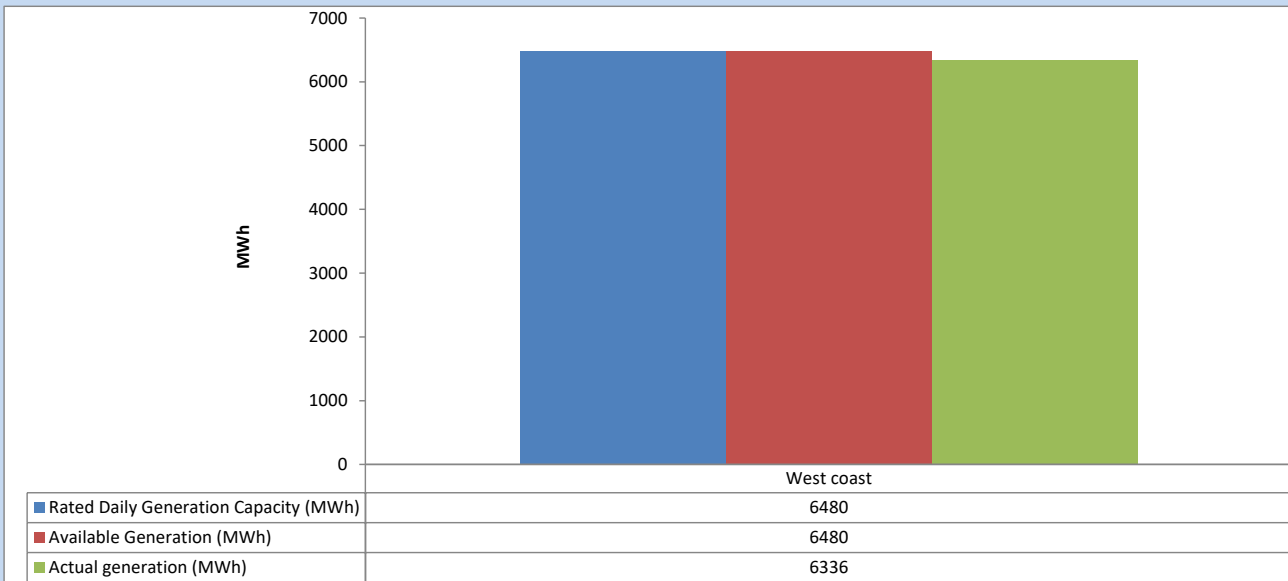


Plant availability is recorded at 6.00 am on

July 15, 2023

5. IPP owned Thermal Plant Dispatch

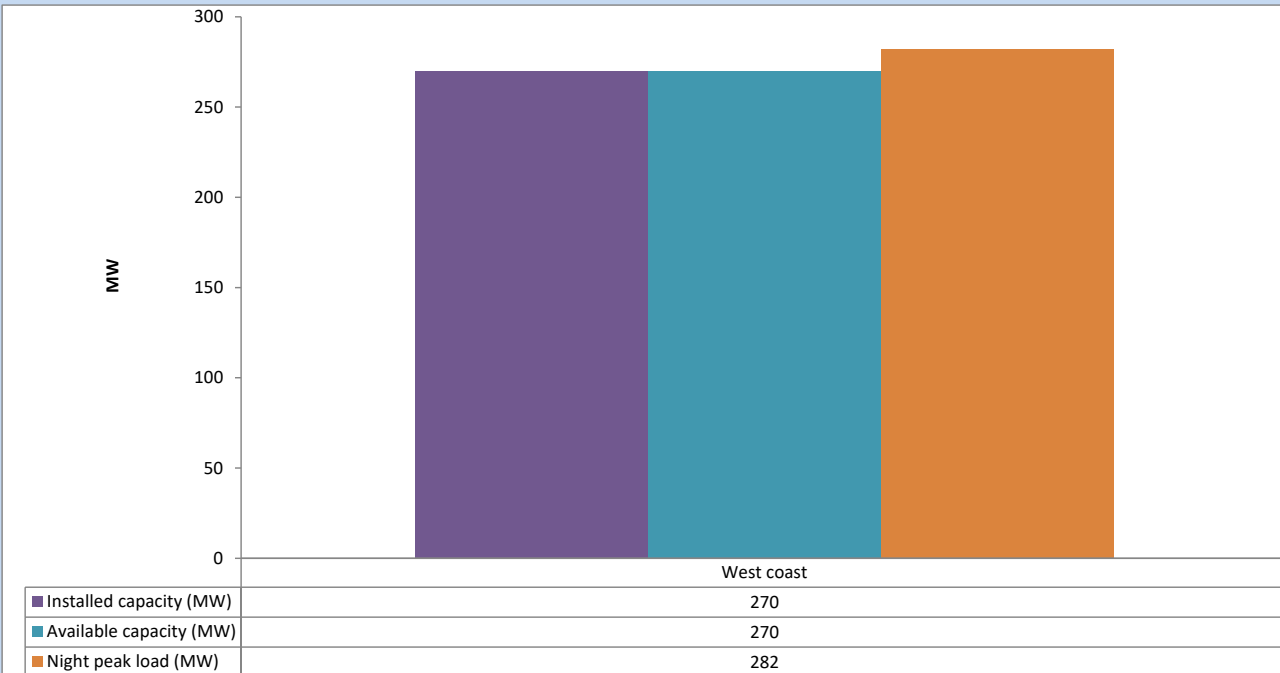
July 14, 2023



Available Generation is estimated based on plant availability at 6.00am on

July 15, 2023

6. IPP owned Thermal Plant Loading at the Night Peak

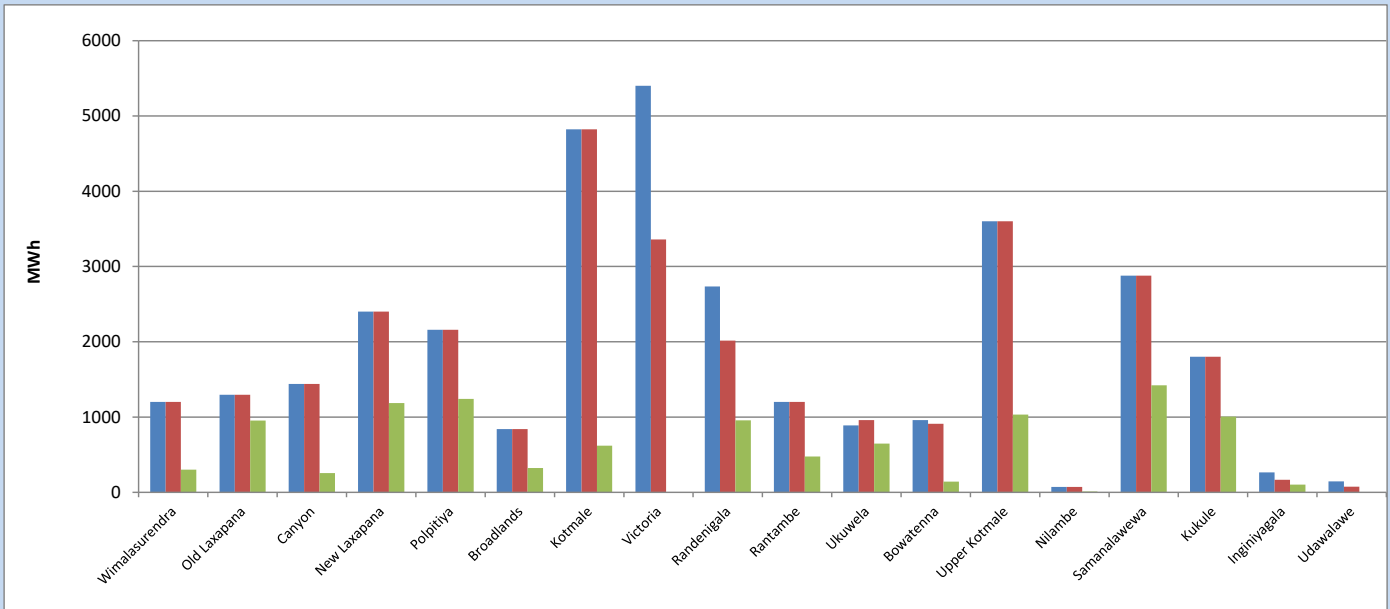


Plant availability is recorded at 6.00 am on

July 15, 2023

7. Major Hydro Plant Dispatch

July 14, 2023

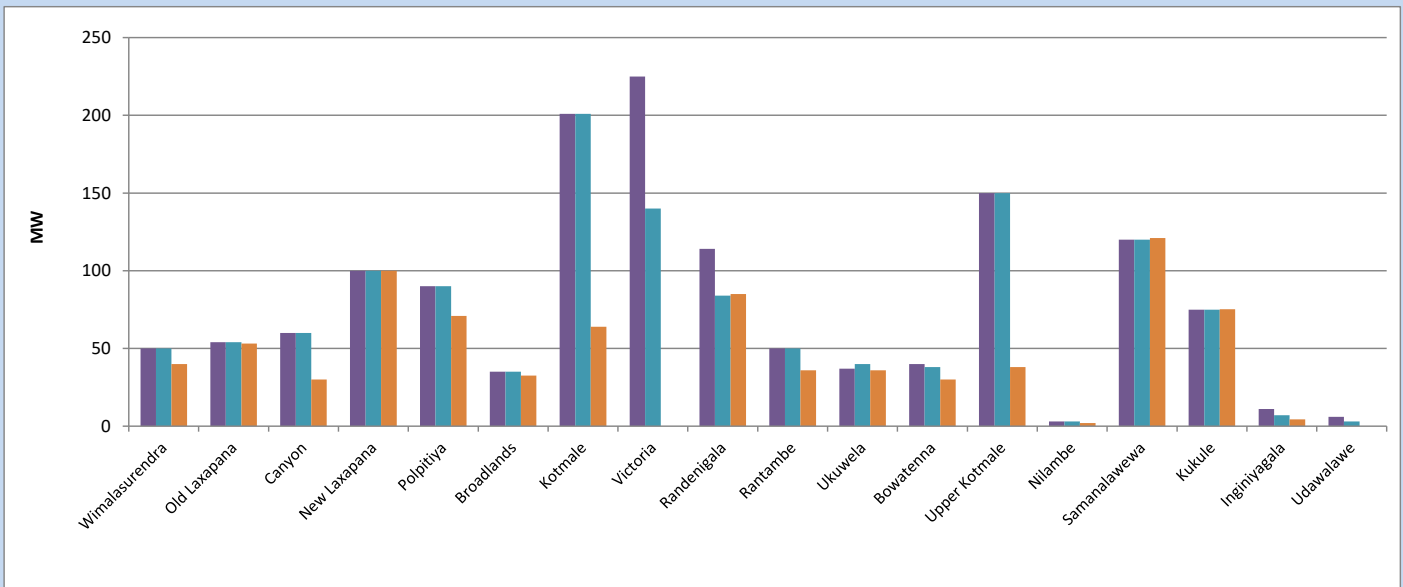


Available Generation is estimated based on plant availability at 6.00am on
Broadlands power plant is operating in the Commissioning Stage

July 15, 2023

8. Major Hydro Plant Loading at Night Peak

July 14, 2023



Plant availability is recorded at 6.00 am on
Broadlands power plant is operating in the Commissioning Stage

July 15, 2023

9. Summary of Major Plant performance

Table 04

Plant	Installed Capacity	Plant Availability	Night peak Load	Plant Dispatch
	(MW)	(MW)	(MW)	(MWh)
Wimalasurendra	50	50	40	303
Old Laxapana	54	54	53	955
Canyon	60	60	30	256
New Laxapana	100	100	100	1,187
Polpitiya	90	90	71	1,241
Broadlands	35	35	33	322
Kotmale	201	201	64	620
Victoria	225	140	0	0
Randenigala	114	84	85	957
Rantambe	50	50	36	475
Ukuwela	37	40	36	646
Bowatenna	40	38	30	143
Upper Kotmale	150	150	38	1,033
Nilambe	3	3	2	12
Samanalawewa	120	120	121	1,423
Kukule	75	75	75	1,005
Inginiyagala	11	7	4	103
Udawalawe	6	3	0	0
Puttalam Coal I	270	120	179	2,106
Puttalam Coal II	270	268	268	6,446
Puttalam Coal III	270	197	196	4,703
KPS Small GTs	64	0	0	0
KPS GT 7	115	115	0	0
KCCP	161	103	102	2,261
Sapugaskanda A	70	50	33	698
Sapugaskanda B	70	54	54	1,256
Uthura Janani	26	16	23	437
Barge CEB	60	60	45	820
CEB-Hambantota	30	18	0	0
CEB-Mathugama	20	13	0	0
ACE Matara	24	0	0	0
Asia Power	50	0	0	0
KCCPS -2	163	155	0	0
West Coast	270	270	282	6,336
Nothern Power	36	0	0	0
ACE Embilipitiya	93	0	0	0
Total	3,483	2,739	2,183	41,564

Plant availability is the availability recorded at 6 am on

July 15, 2023

10. Contribution to the Night Peak in MW

July 14, 2023

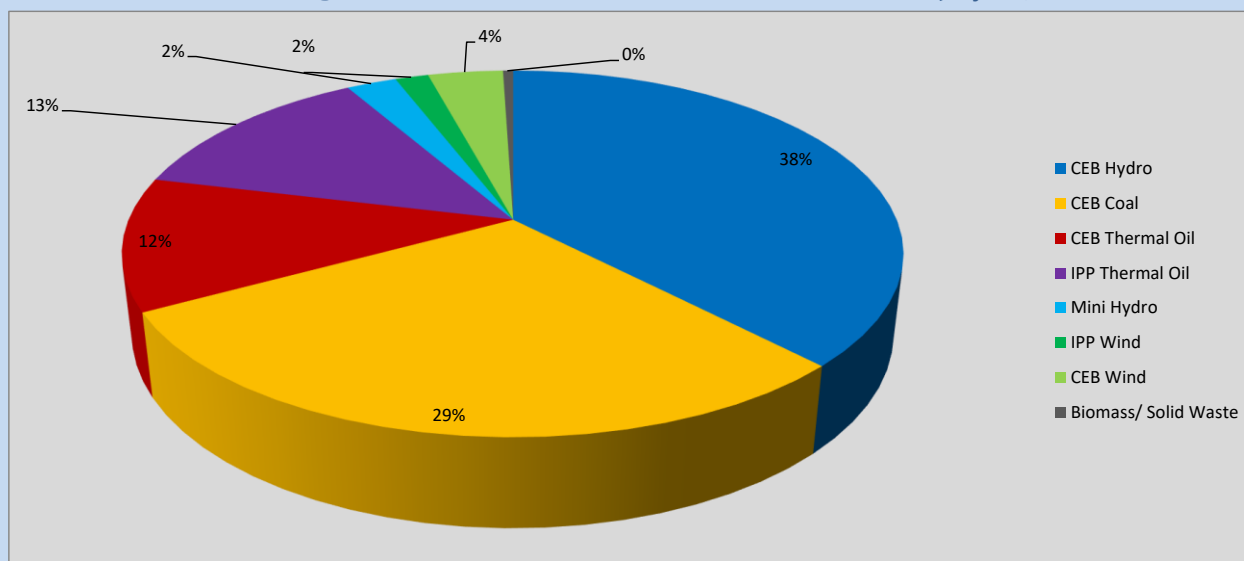


Table 05

CEB Hydro	826	MW
CEB Coal	643	MW
CEB Thermal Oil	257	MW
IPP Thermal Oil	282	MW
Mini Hydro (Telemetered)	54	MW
IPP Wind	36	MW
CEB Wind	81.2	MW
Biomass/ Solid Waste	11	MW

Recorded Peak Demand Data

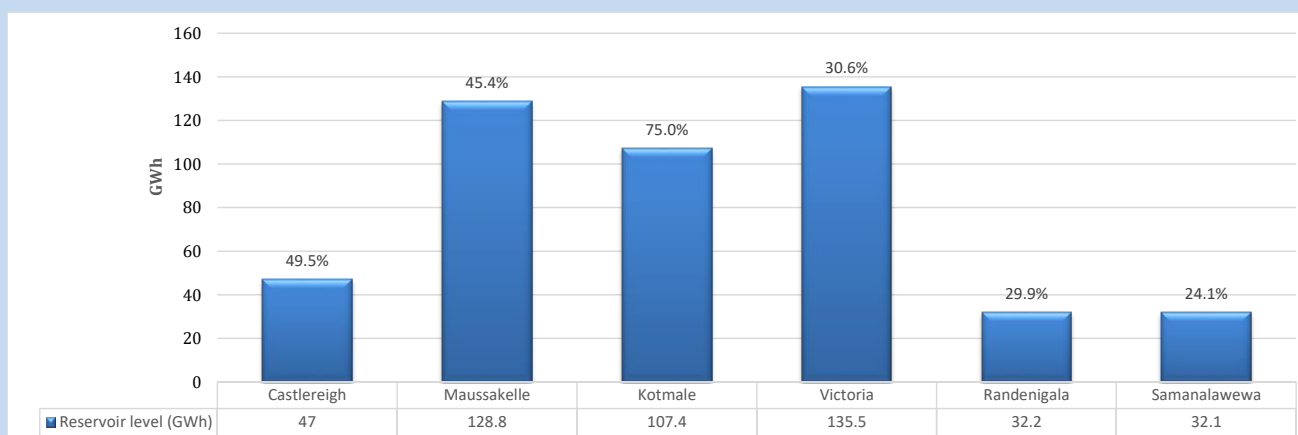
Table 06

Night Peak*	2,191	MW
Day Peak Maximum Demand	1,920	MW
Day Peak Minimum Demand	1,636	MW
Off Peak Minimum Demand	1,259	MW

Above figures are excluding contribution from roof top solar, non telemetered solar and mini hydro plants

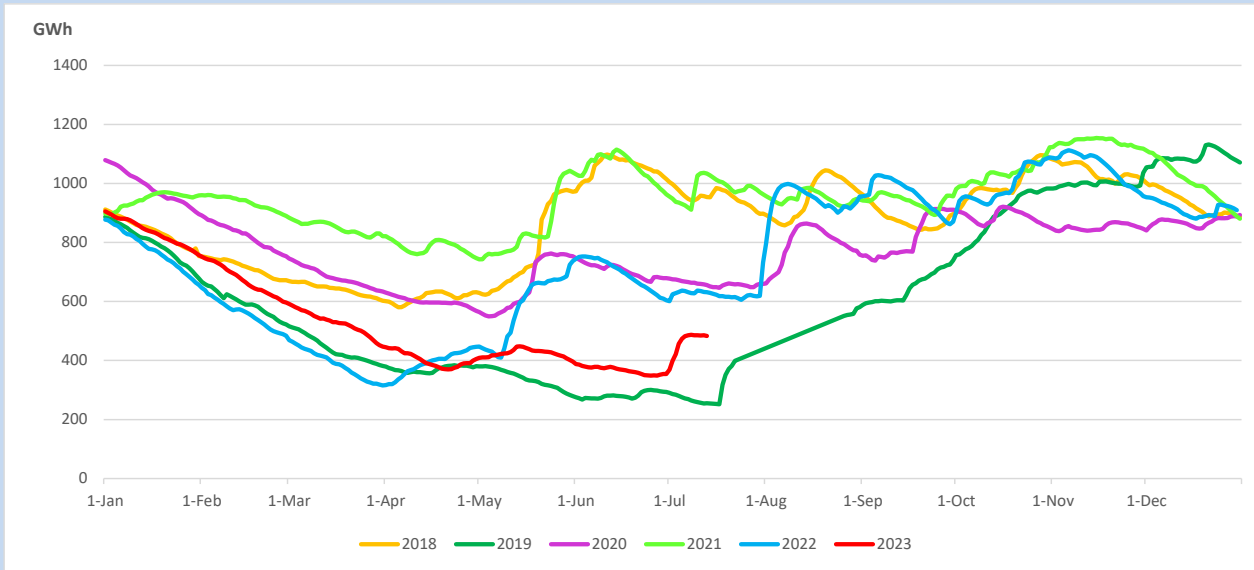
Reservoir Levels -

as at 06.00 Hr on July 15, 2023

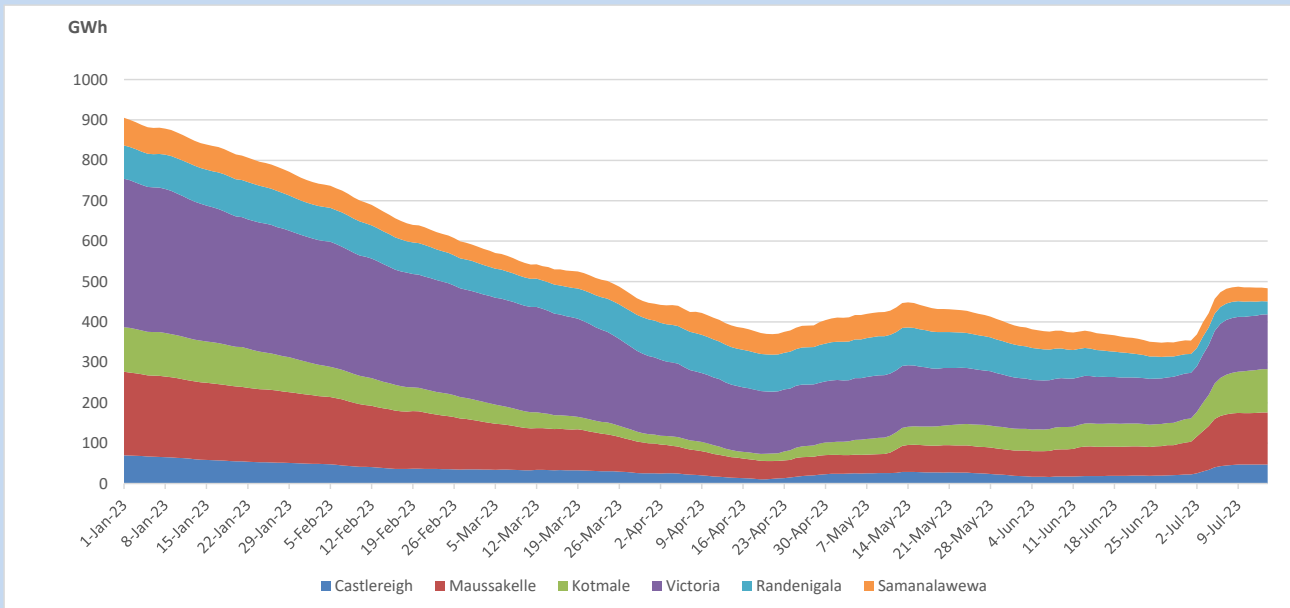


Total Reservoir Level 483 GWh
% of Total capacity 40.1%

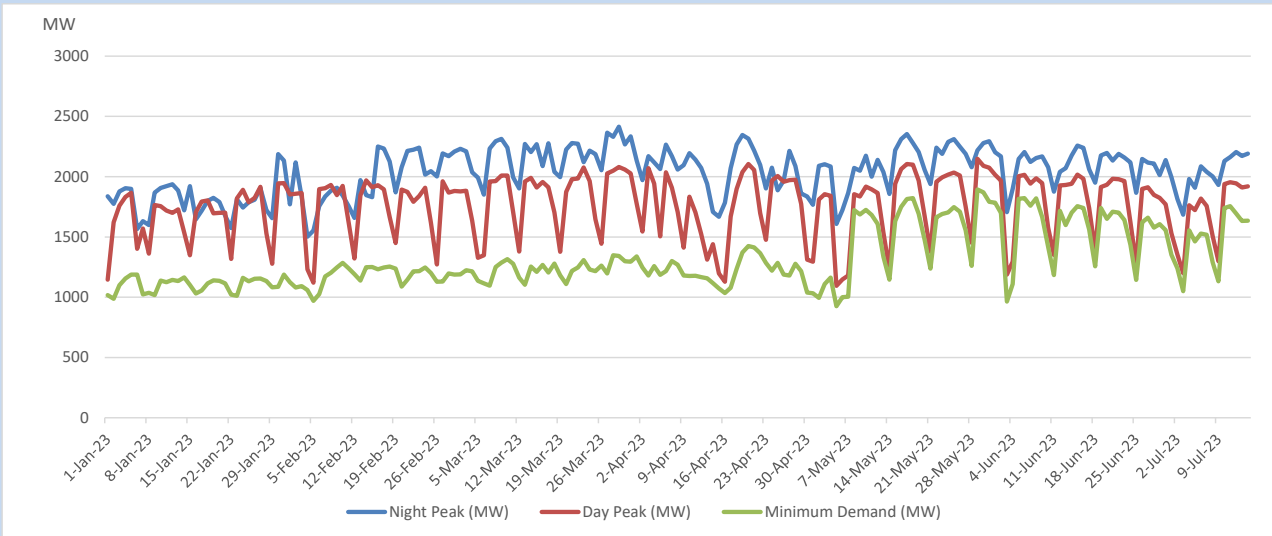
11. Comparison of Total Reservoir Storage Levels with Past Years



12. Variation of Major Hydro Reservoir Levels in the current year (GWh)



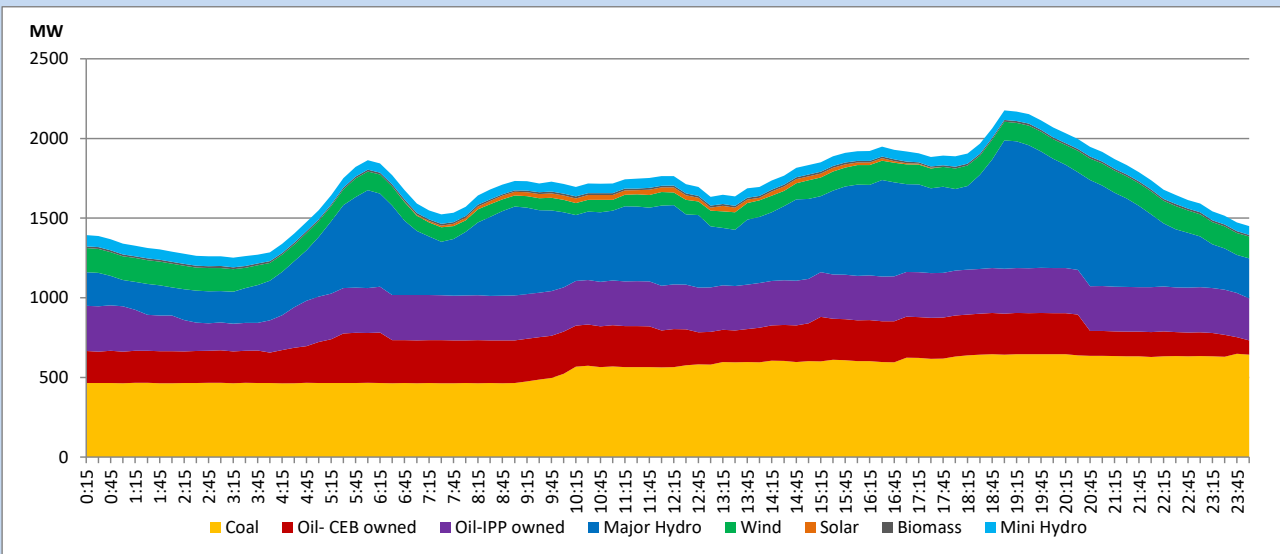
13. Variation of Demand during the current year



The above figures are excluding contribution from roof top solar, non telemetered solar and mini hydro plants

14. Daily Load Curve

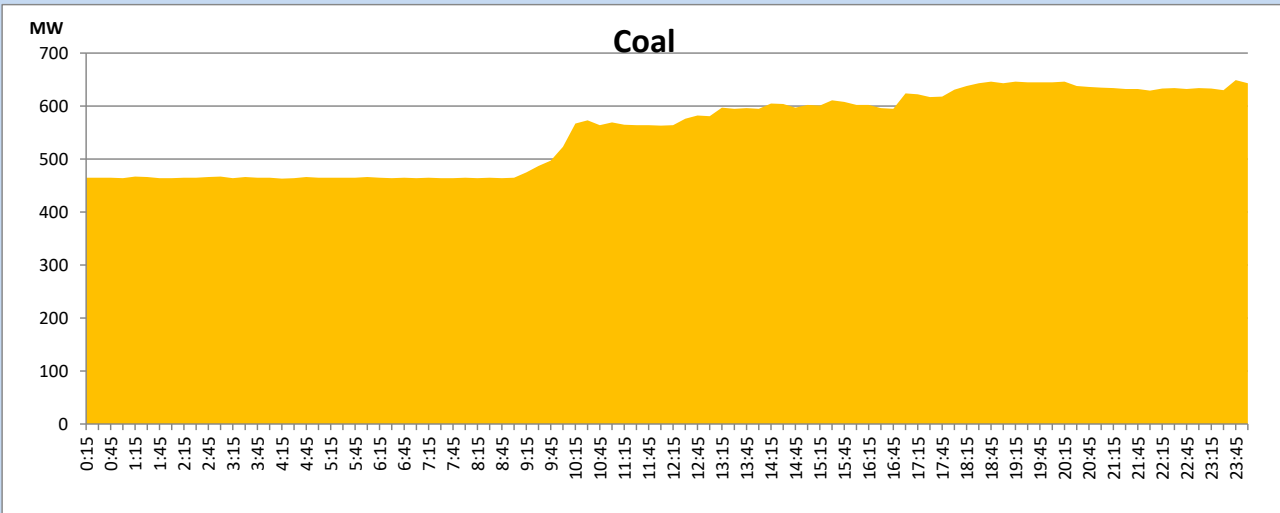
July 14, 2023



Solar and wind data is based on Telemetered Power Stations only

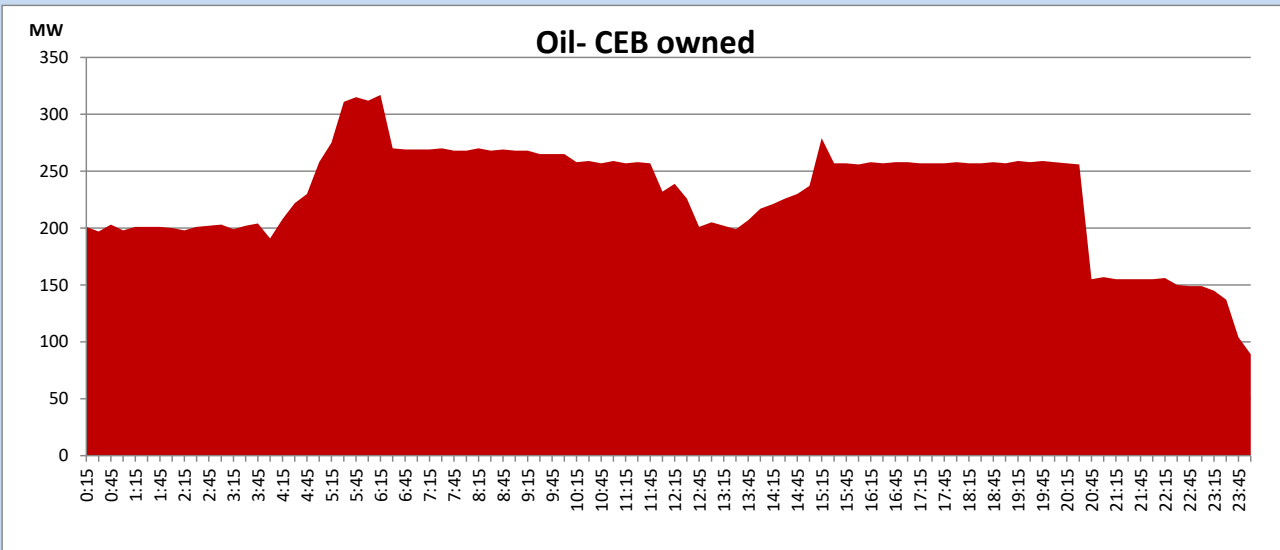
Coal Generation during

July 14, 2023



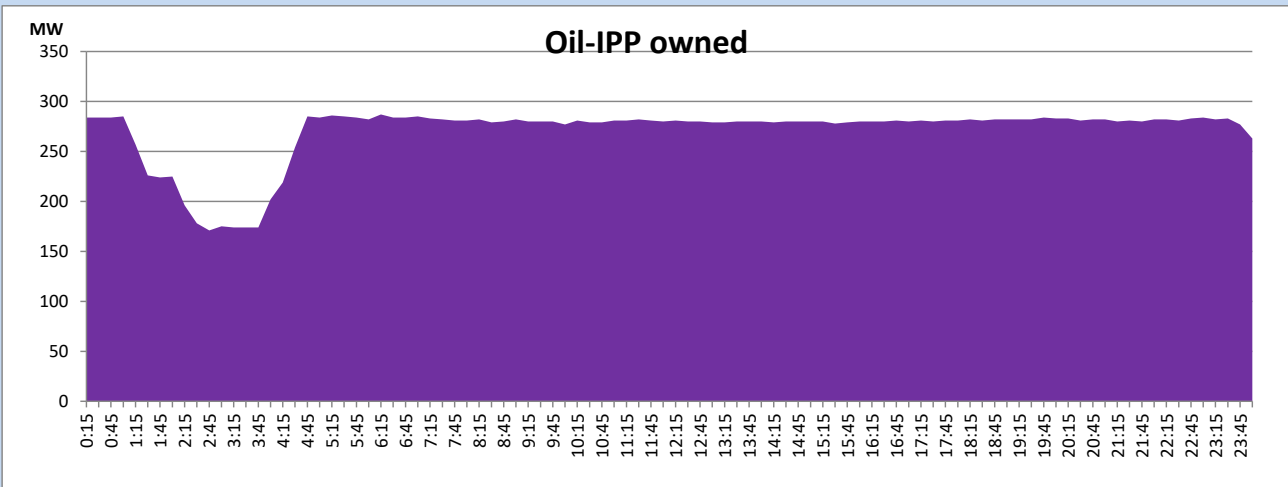
CEB Oil Plant Generation during

July 14, 2023



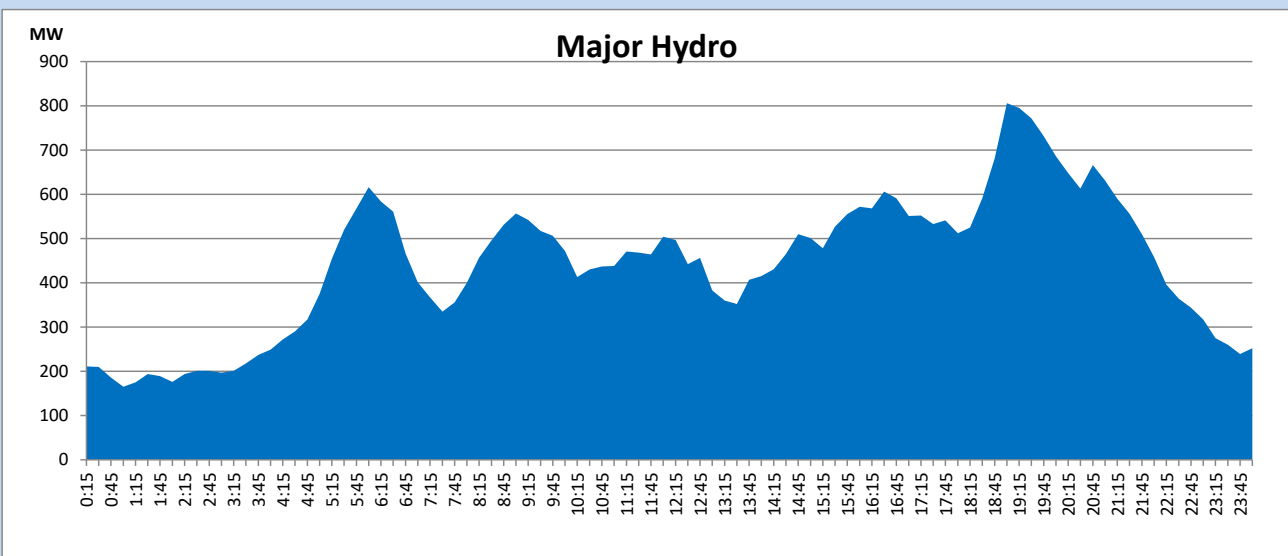
IPP Oil Plant Generation during

July 14, 2023



Major Hydro Generation during

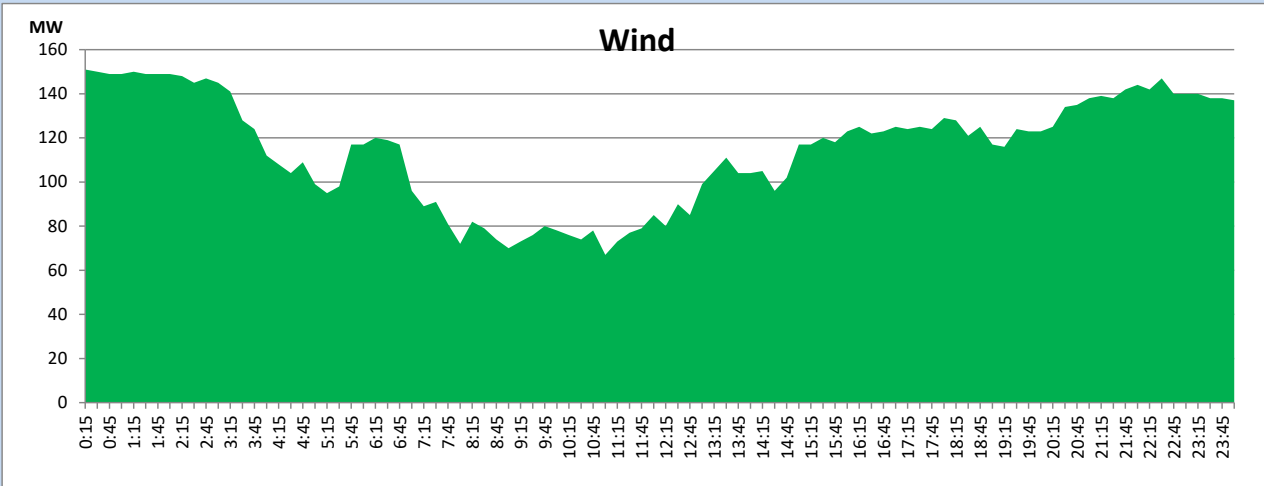
July 14, 2023



Wind Generation during

July 14, 2023

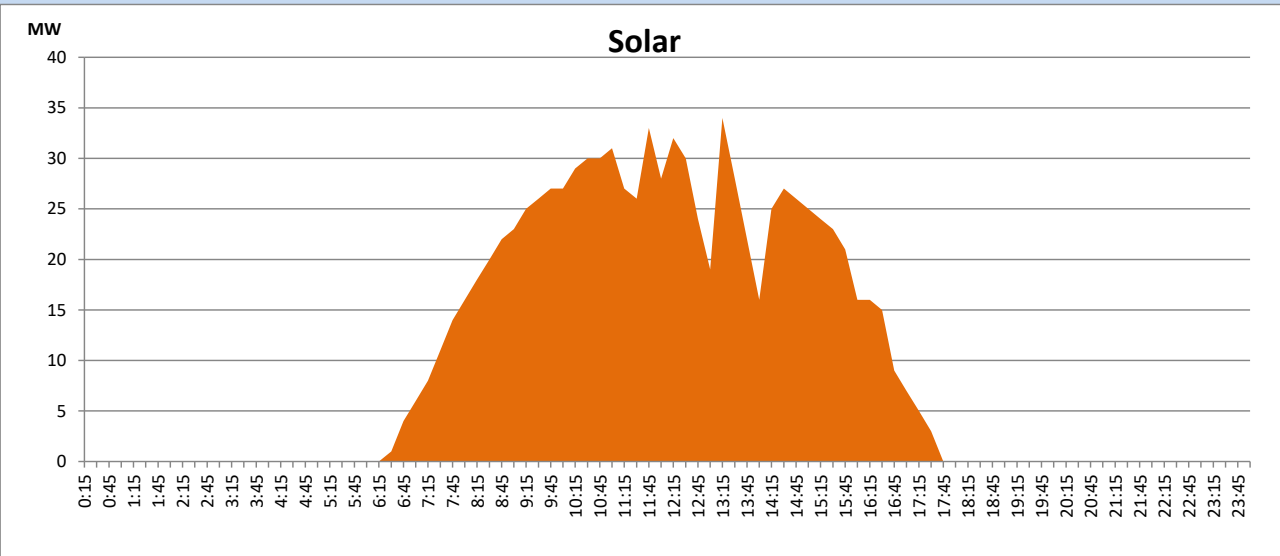
Based on Telemetered Power Stations only



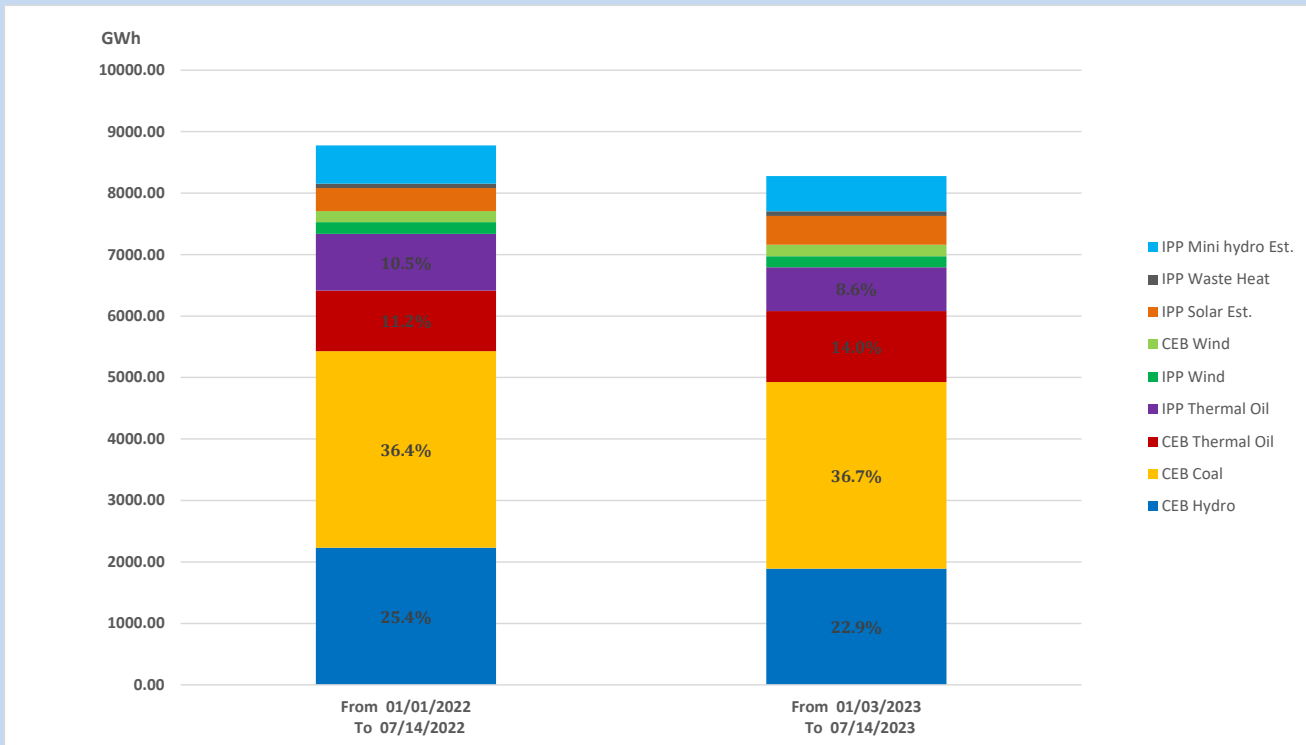
Solar Generation during

July 14, 2023

Based on Telemetered Power Stations only



15. Cumulative Dispatch Comparison with Last Year



Cumulative dispatch

From 01/01/2022 To 07/14/2022

8777 GWh

From 01/01/2023 To 07/14/2023

8276 GWh

The above figures are including contribution from roof top solar, non telemetered solar and mini hydro plants

Thermal Plant Fuel types

Power Station	Primary Fuel
CEB Thermal	
Sapugaskanda 1	Heavy Fuel
Sapugaskanda 2	Heavy Fuel
Kelanitissa Small Gas Turbines	Auto Diesel
GT 7 - Kelanitissa	Auto Diesel
Kelanitissa CCY	Naphtha or Diesel
Lakvijaya 1	Coal
Lakvijaya 2	Coal
Lakvijaya 3	Coal
Uthuru Janani	Heavy Fuel
Barge CEB	Heavy Fuel
KCCPS -2	Auto Diesel

Power Station	Primary Fuel
Private Thermal	
West Coast	Auto Diesel / Heavy Fuel

Major Incidents reported during the day

July 14, 2023

- 1) LVPS Unit 01 synchronized at 9:12hrs and reached 250MW (net) at 02:30hrs (15.07.2023).
- 2) KCCP ST tripped at 06:20hrs rejecting 49MW from the system due to feed water pump failure and resumed generation at 14:12hrs. KCCP ST tripped again at 15:23hrs due to the high vibration of HP Turbine. KCCP ST is yet to resume the generation
- 3) LVPS unit 01 de-loaded to 115MW(net) at 04:57hrs(15.07.23) due to ID fan failure.