

Generation and Reservoirs Statistics

July 13, 2023



PUBLIC UTILITIES COMMISSION OF SRI LANKA

1. Daily Generation Mix in MWh

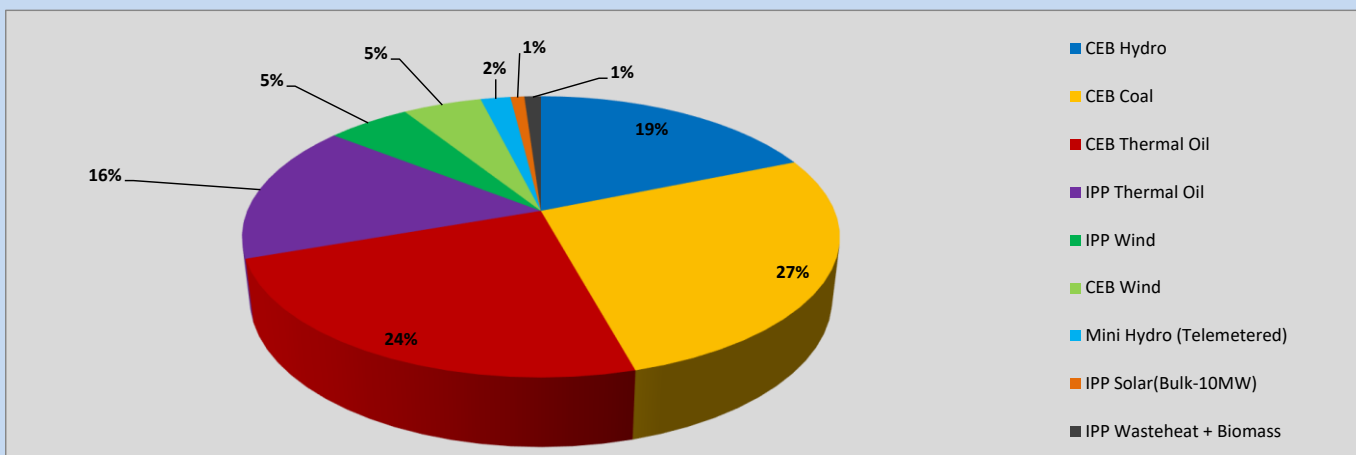


Table 01

CEB Hydro	7,777	MWh
CEB Coal	11,191	MWh
CEB Thermal Oil	9,907	MWh
IPP Thermal Oil	6,622	MWh
IPP Wind	2,233	MWh
CEB Wind	2,117	MWh
Mini Hydro (Telemetered)	803	MWh
IPP Solar (Bulk)	372	MWh
IPP Wasteheat + Biomass	443	MWh
Total Generation (Excluding estimated figures)	41,465	MWh
* Estimated unserved energy	0	MWh
* Estimated Mini Hydro (Non telemetered)	2707	MWh
* Estimated IPP Solar PV (Bulk 1-10MW)	304	MWh
* Estimated Solar Roof Top PV	1650	MWh
Total Generation (Including estimated figures)	46,126	MWh

* Estimated figures of CEB generation report

2. Cumulative Dispatch

Following data excludes the contribution from roof top solar, non telemetered solar and mini hydro plants

Table 02 - Current Month

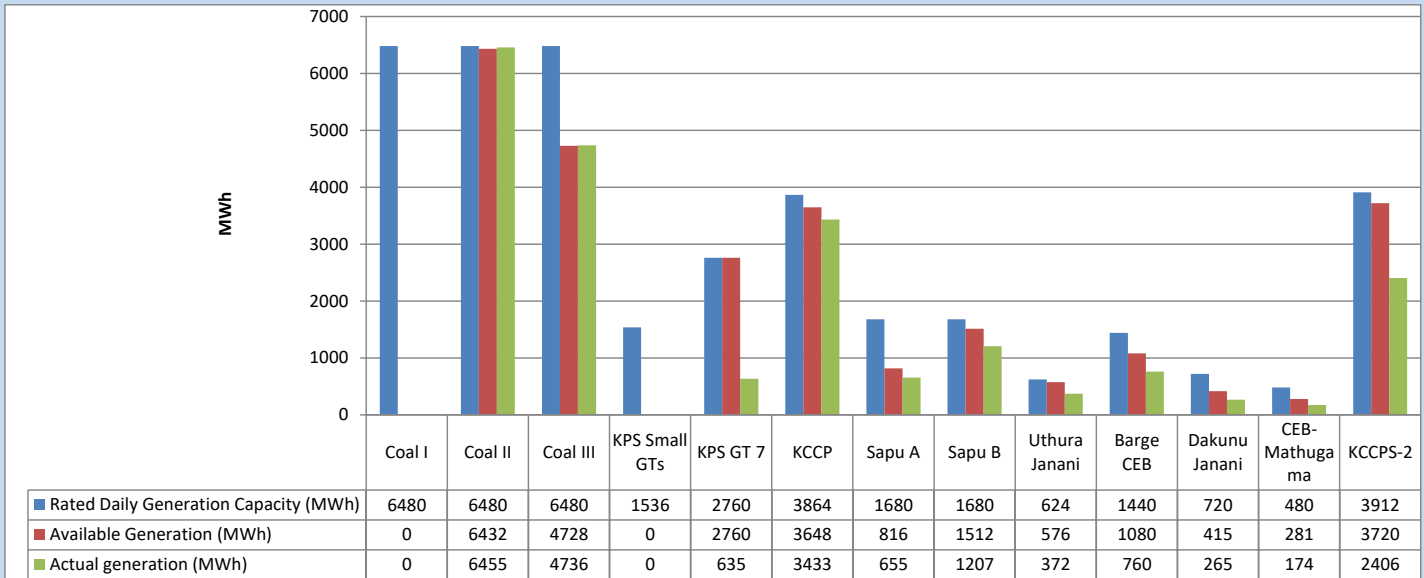
Category	Dispatch (GWh)	
CEB Hydro	148	30.64%
CEB Coal	142	29.34%
CEB Thermal Oil	70	14.39%
IPP Thermal	51	10.47%
SPP Wind	24	4.89%
CEB Wind	21	4.40%
Mini Hydro (Telemetered)	20	4.19%
IPP Solar(Bulk-10MW)	4	0.77%
IPP Wasteheat + BMP	4	0.91%
Total	484	

Table 03 - Current Year

Category	Dispatch (GWh)	
CEB Hydro	1,886	25.36%
CEB Coal	3,025	40.68%
CEB Thermal Oil	1,153	15.51%
IPP Thermal	705	9.48%
SPP Wind	175	2.35%
CEB Wind	185	2.49%
Mini Hydro (Telemetered)	186	2.50%
IPP Solar(Bulk-10MW)	57	0.76%
IPP Wasteheat	64	0.87%
Total	7,437	

3. CEB owned Thermal Plant Dispatch

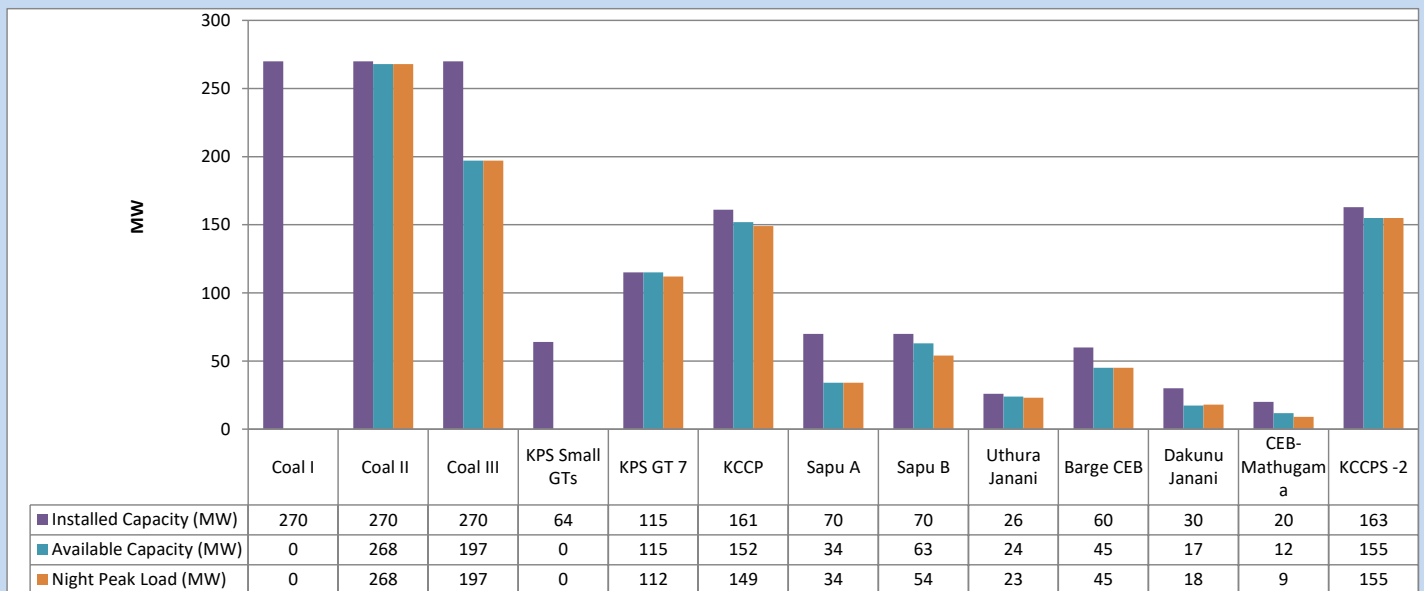
July 13, 2023



Available Generation is estimated based on plant availability at 6.00am on

July 14, 2023

4. CEB owned Thermal Plant Loading at the Night Peak

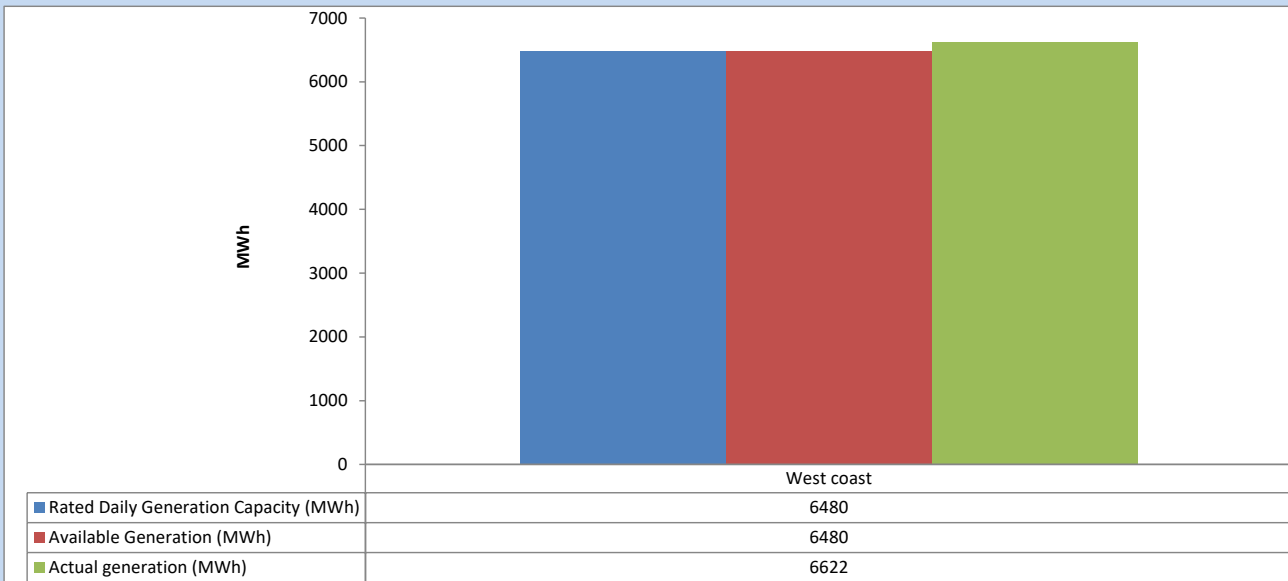


Plant availability is recorded at 6.00 am on

July 14, 2023

5. IPP owned Thermal Plant Dispatch

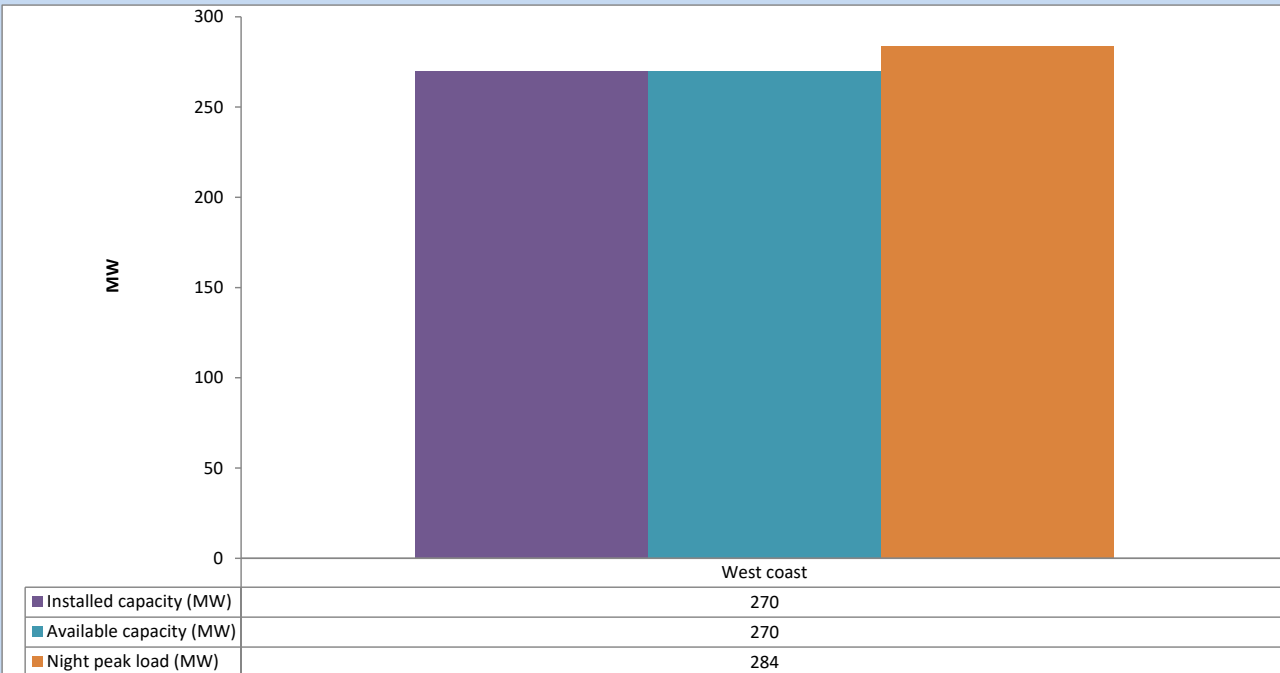
July 13, 2023



Available Generation is estimated based on plant availability at 6.00am on

July 14, 2023

6. IPP owned Thermal Plant Loading at the Night Peak

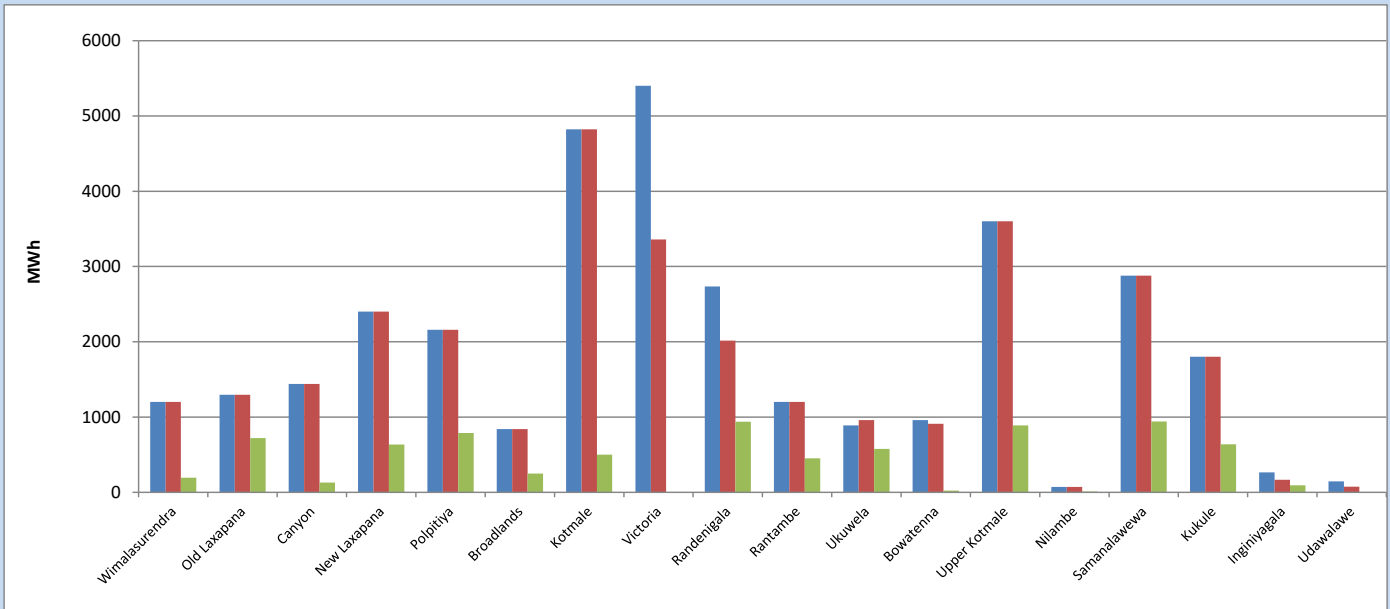


Plant availability is recorded at 6.00 am on

July 14, 2023

7. Major Hydro Plant Dispatch

July 13, 2023

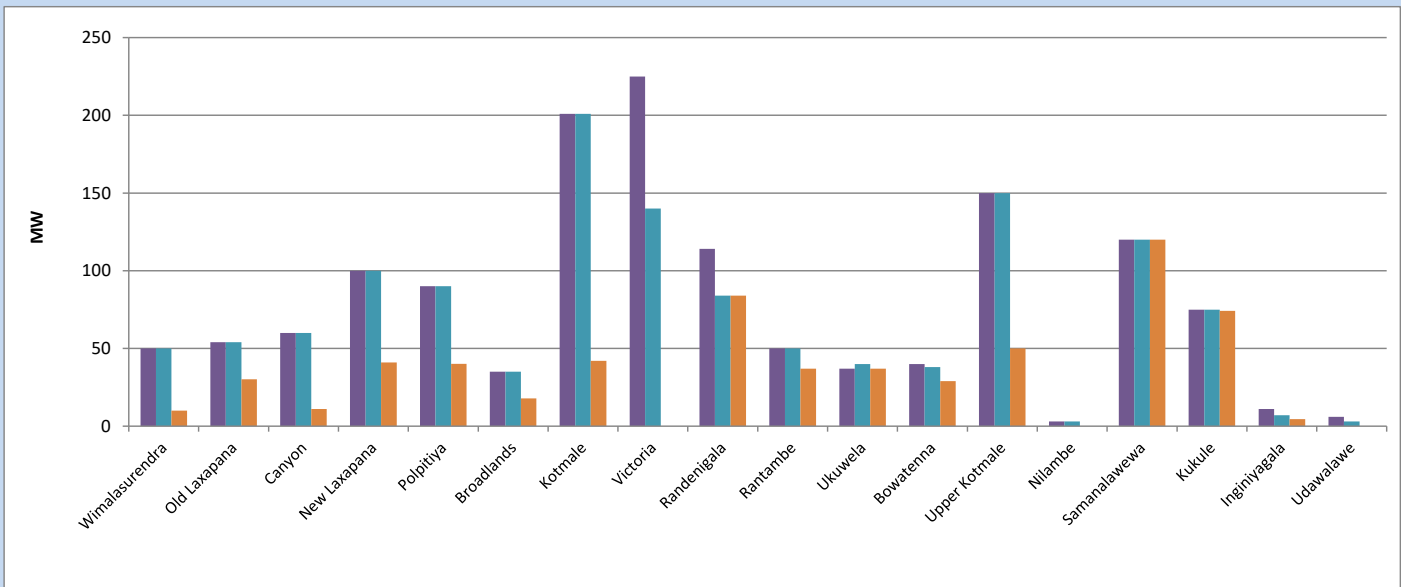


Available Generation is estimated based on plant availability at 6.00am on
Broadlands power plant is operating in the Commissioning Stage

July 14, 2023

8. Major Hydro Plant Loading at Night Peak

July 13, 2023



Plant availability is recorded at 6.00 am on
Broadlands power plant is operating in the Commissioning Stage

July 14, 2023

9. Summary of Major Plant performance

Table 04

Plant	Installed Capacity	Plant Availability	Night peak Load	Plant Dispatch
	(MW)	(MW)	(MW)	(MWh)
Wimalasurendra	50	50	10	195
Old Laxapana	54	54	30	722
Canyon	60	60	11	130
New Laxapana	100	100	41	634
Polpitiya	90	90	40	787
Broadlands	35	35	18	251
Kotmale	201	201	42	500
Victoria	225	140	0	0
Randenigala	114	84	84	937
Rantambe	50	50	37	452
Ukuwela	37	40	37	576
Bowatenna	40	38	29	23
Upper Kotmale	150	150	50	888
Nilambe	3	3	0	12
Samanalawewa	120	120	120	940
Kukule	75	75	74	638
Inginiyagala	11	7	5	92
Udawalawe	6	3	0	0
Puttalam Coal I	270	0	0	0
Puttalam Coal II	270	268	268	6,455
Puttalam Coal III	270	197	197	4,736
KPS Small GTs	64	0	0	0
KPS GT 7	115	115	112	635
KCCP	161	152	149	3,433
Sapugaskanda A	70	34	34	655
Sapugaskanda B	70	63	54	1,207
Uthura Janani	26	24	23	372
Barge CEB	60	45	45	760
CEB-Hambantota	30	17	18	265
CEB-Mathugama	20	12	9	174
ACE Matara	24	0	0	0
Asia Power	50	0	0	0
KCCPS -2	163	155	155	2,406
West Coast	270	270	284	6,622
Nothern Power	36	0	0	0
ACE Embilipitiya	93	0	0	0
Total	3,483	2,652	2,170	41,465

Plant availability is the availability recorded at 6 am on

July 14, 2023

10. Contribution to the Night Peak in MW

July 13, 2023

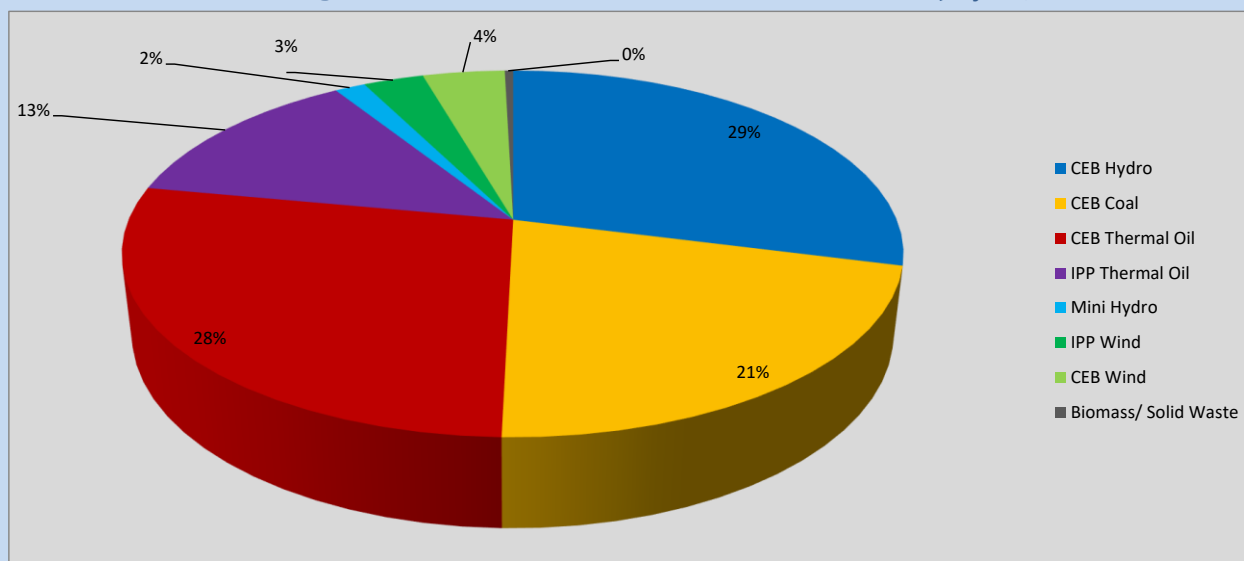


Table 05

CEB Hydro	630	MW
CEB Coal	465	MW
CEB Thermal Oil	599	MW
IPP Thermal Oil	284	MW
Mini Hydro (Telemetered)	33	MW
IPP Wind	64.8	MW
CEB Wind	88.2	MW
Biomass/ Solid Waste	9	MW

Recorded Peak Demand Data

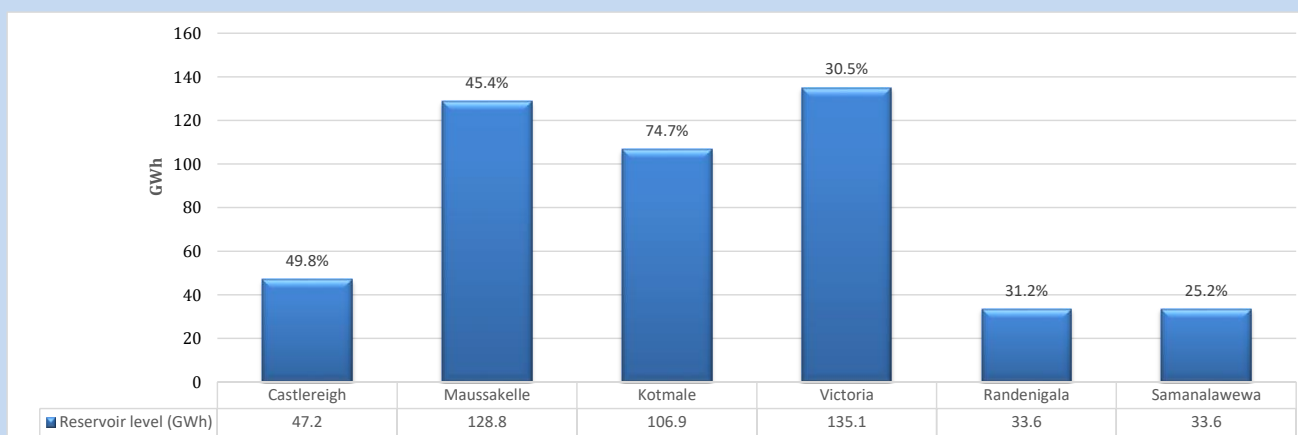
Table 06

Night Peak*	2,172	MW
Day Peak Maximum Demand	1,910	MW
Day Peak Minimum Demand	1,633	MW
Off Peak Minimum Demand	1,276	MW

Above figures are excluding contribution from roof top solar, non telemetered solar and mini hydro plants

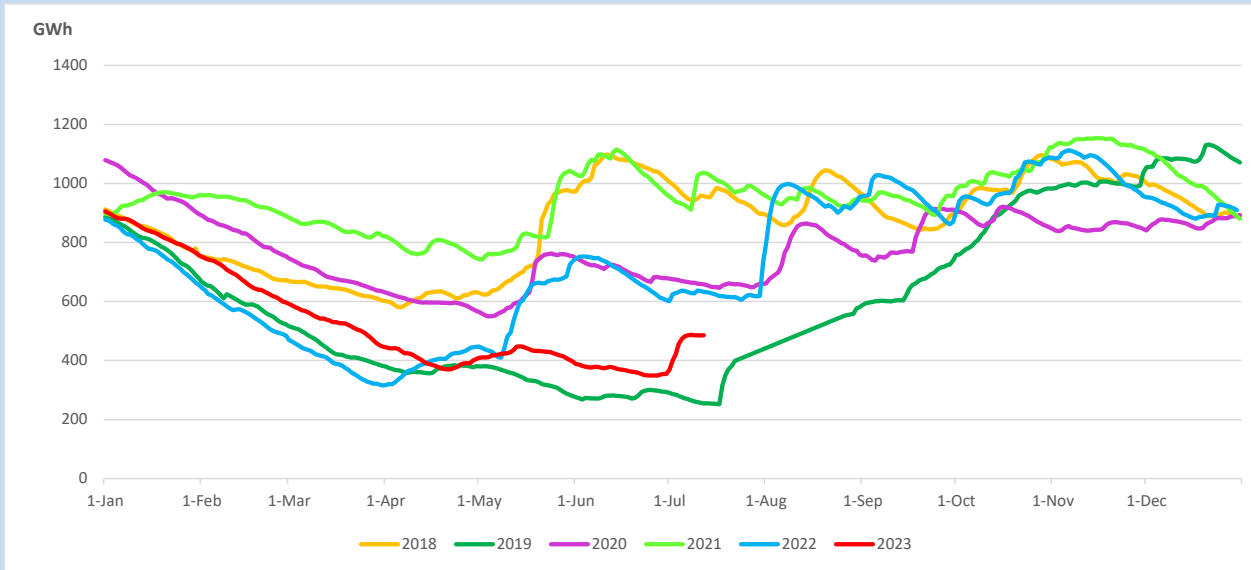
Reservoir Levels -

as at 06.00 Hr on July 14, 2023

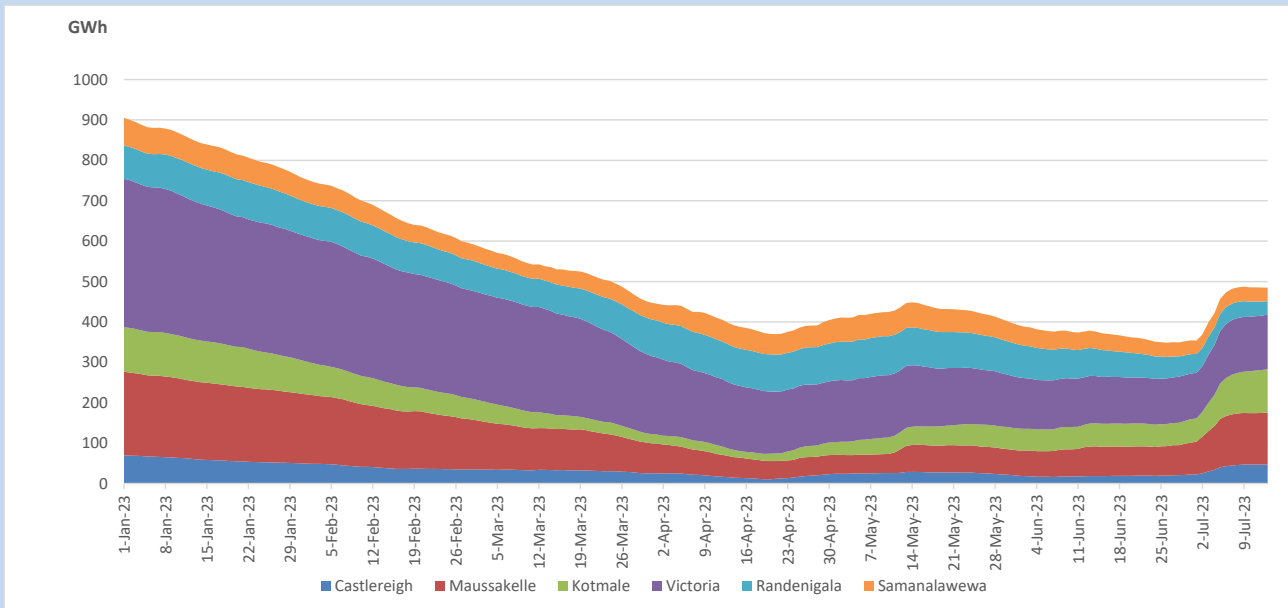


Total Reservoir Level 485.2 GWh
 % of Total capacity 40.2%

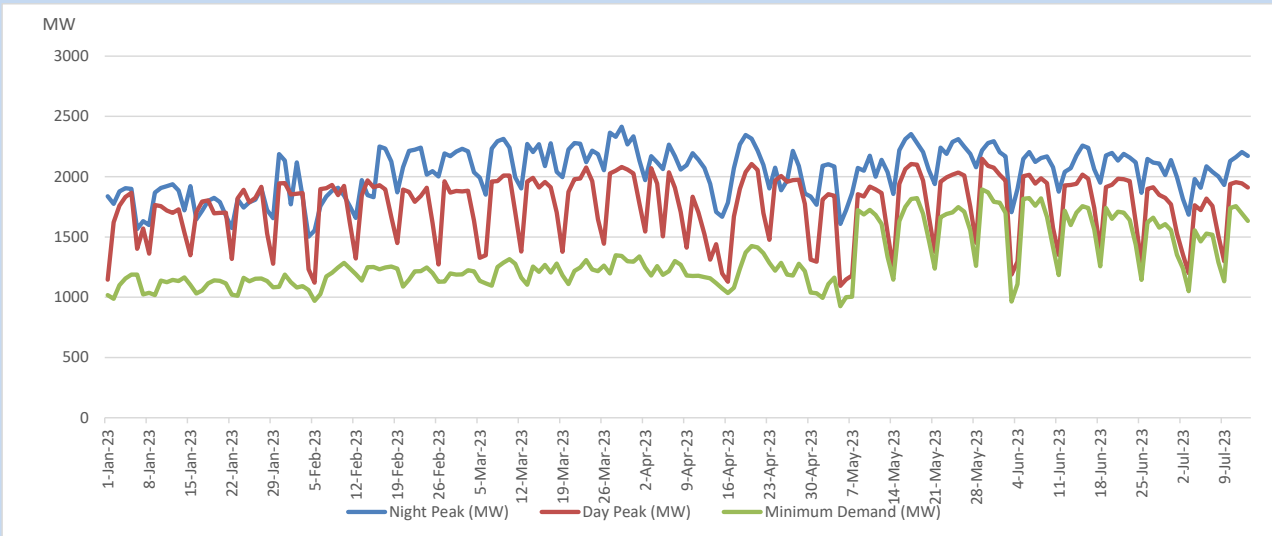
11. Comparison of Total Reservoir Storage Levels with Past Years



12. Variation of Major Hydro Reservoir Levels in the current year (GWh)



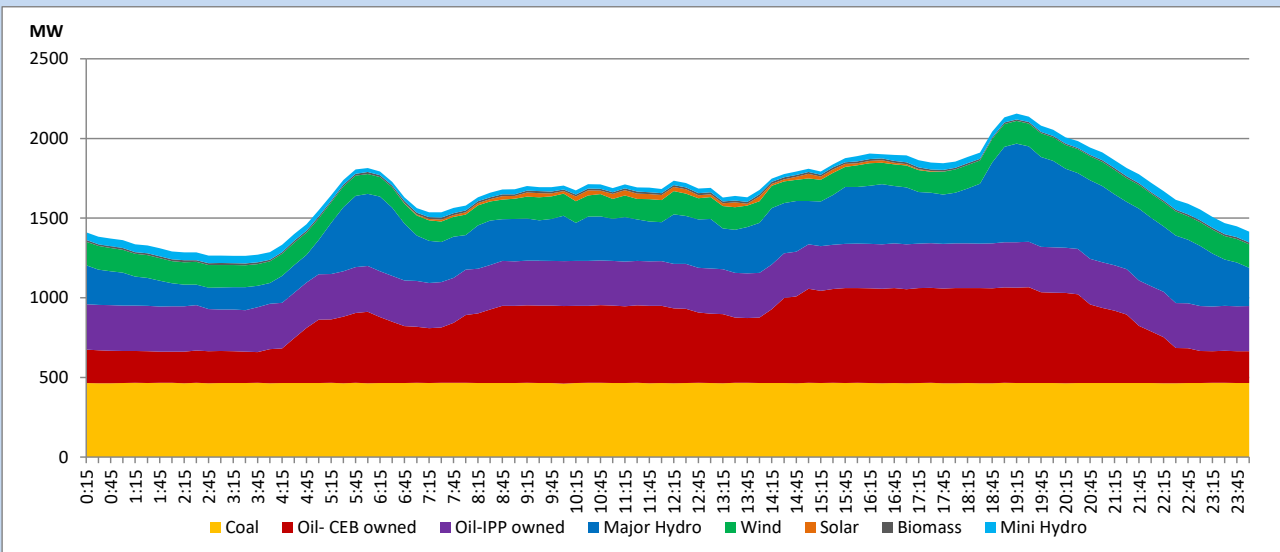
13. Variation of Demand during the current year



The above figures are excluding contribution from roof top solar, non telemetered solar and mini hydro plants

14. Daily Load Curve

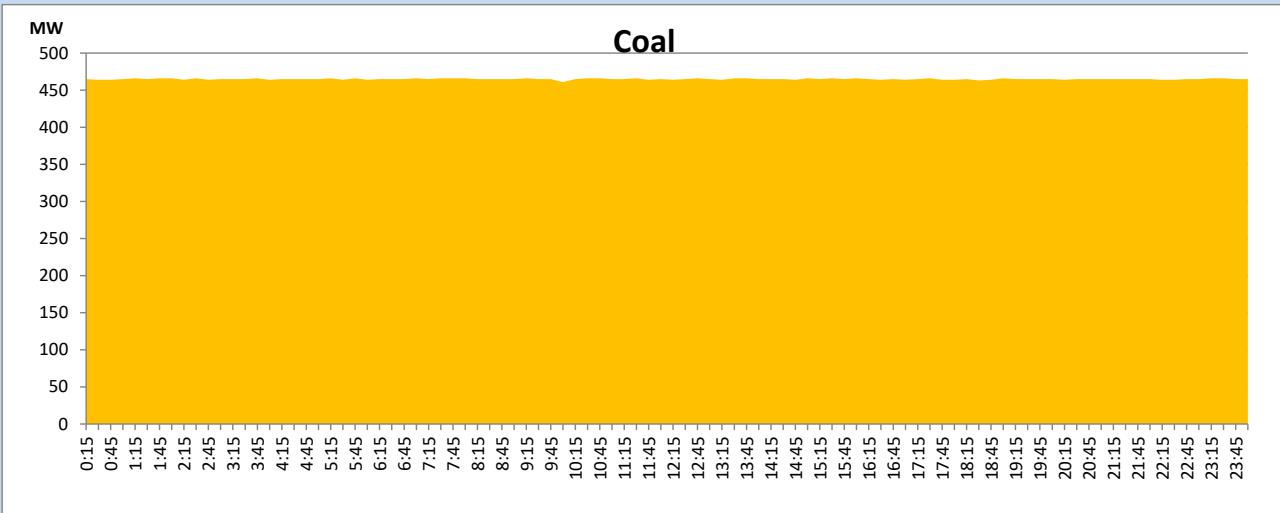
July 13, 2023



Solar and wind data is based on Telemetered Power Stations only

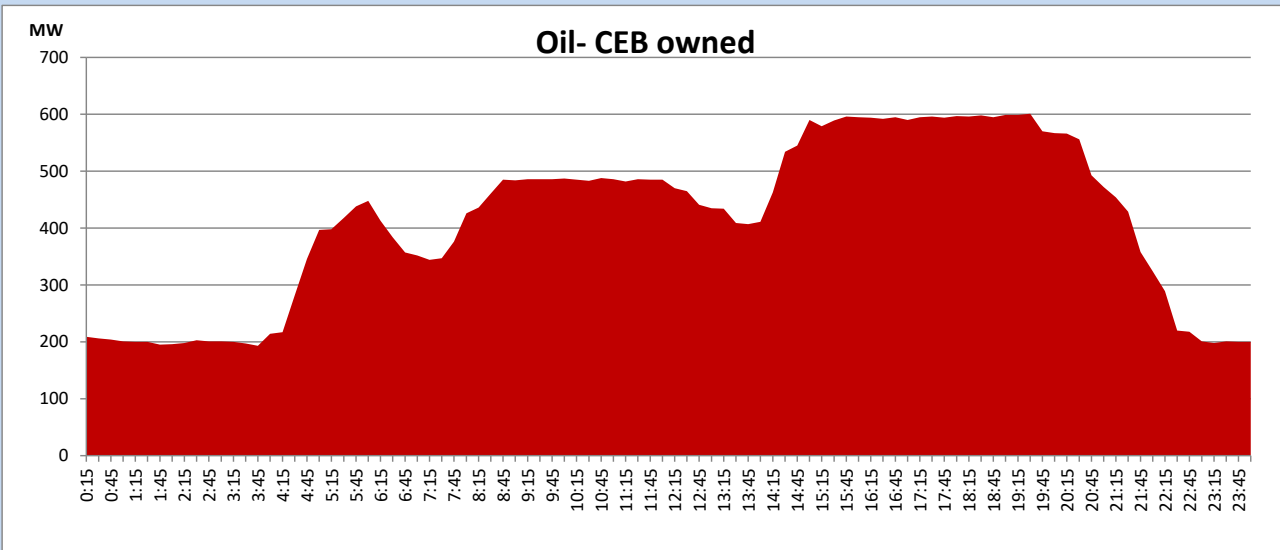
Coal Generation during

July 13, 2023



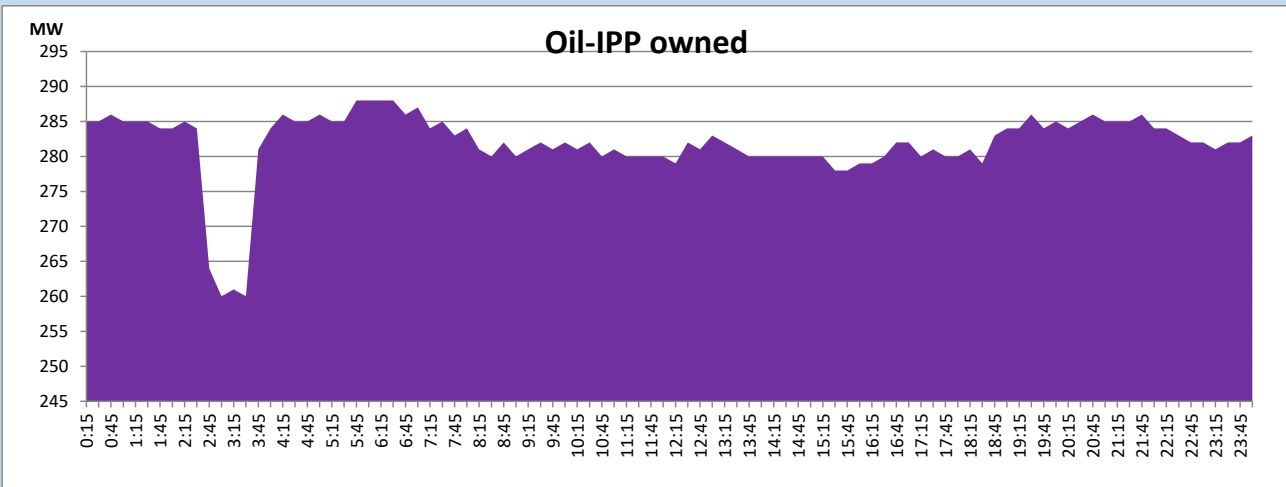
CEB Oil Plant Generation during

July 13, 2023



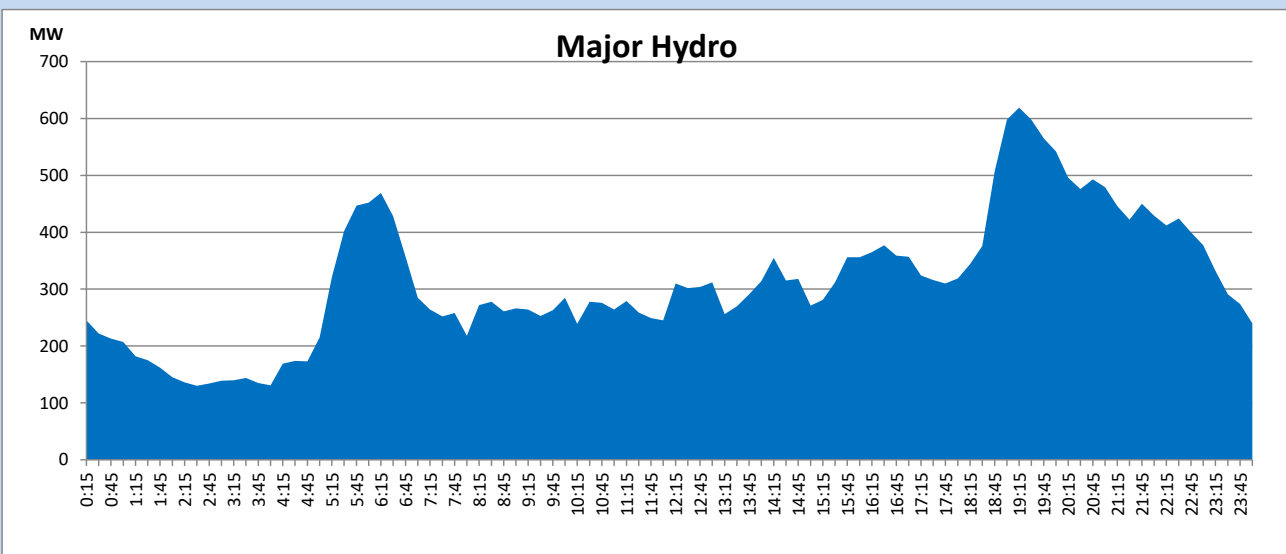
IPP Oil Plant Generation during

July 13, 2023



Major Hydro Generation during

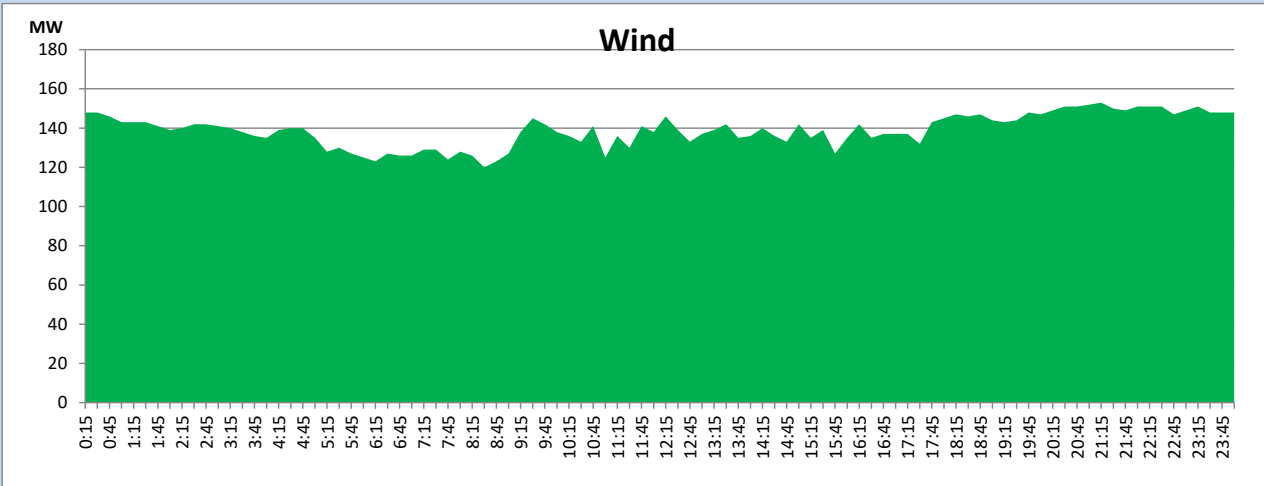
July 13, 2023



Wind Generation during

July 13, 2023

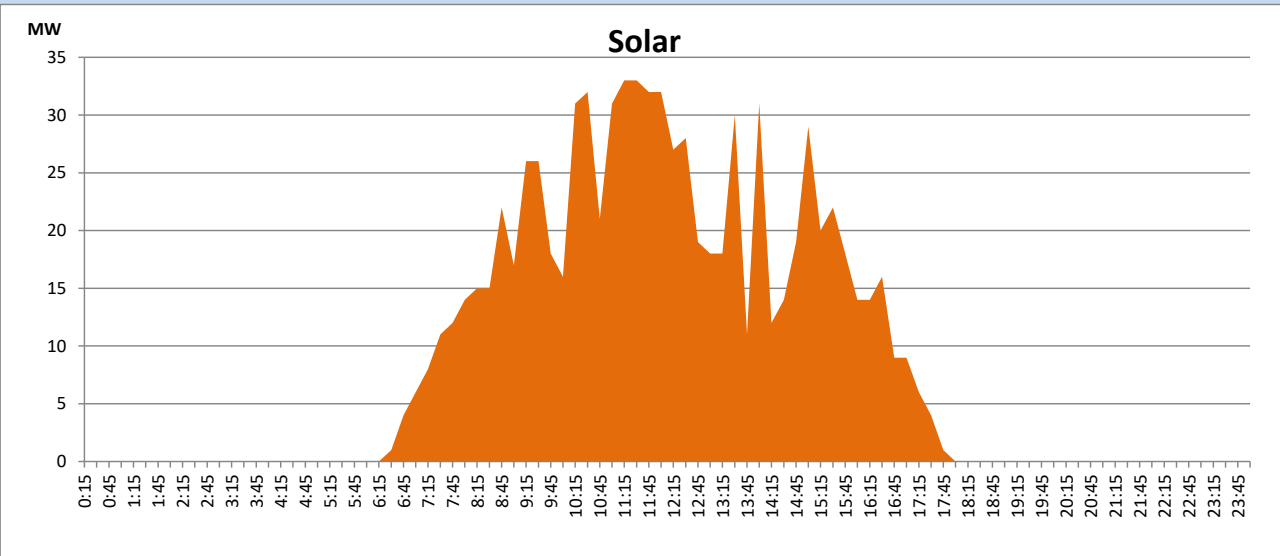
Based on Telemetered Power Stations only



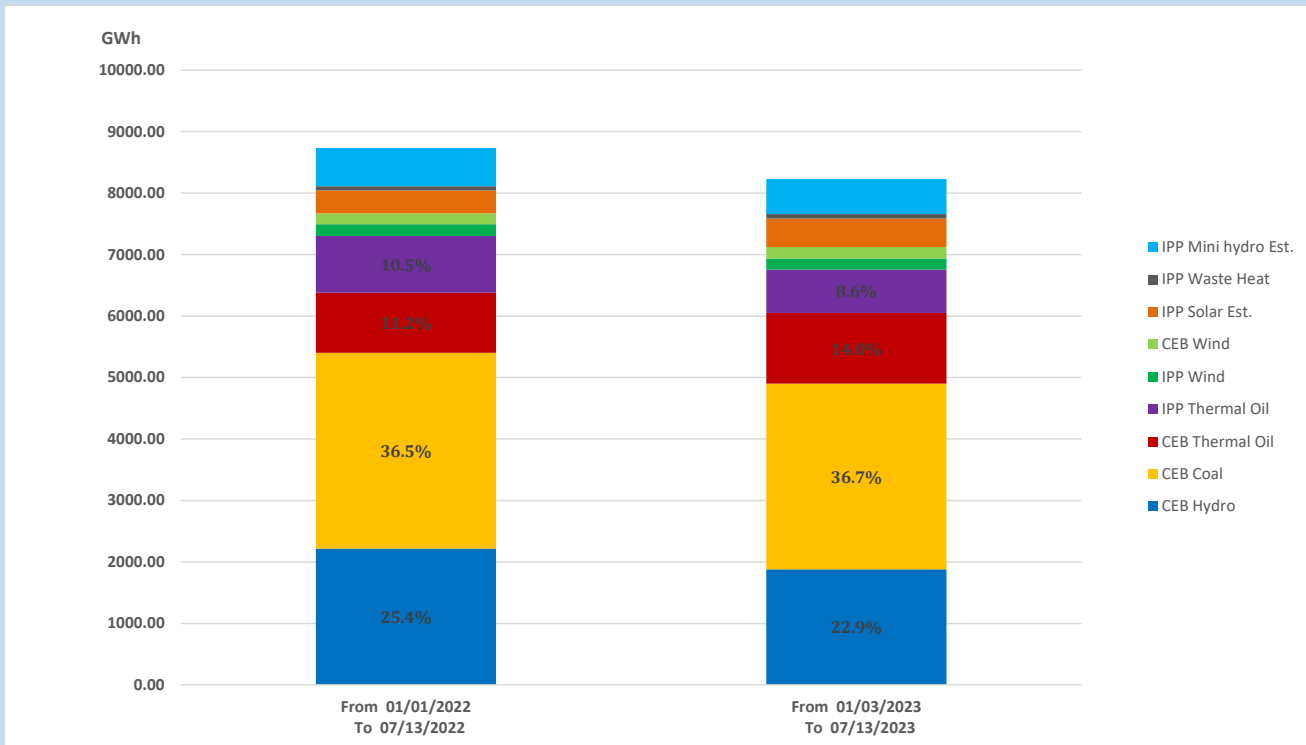
Solar Generation during

July 13, 2023

Based on Telemetered Power Stations only



15. Cumulative Dispatch Comparison with Last Year



Cumulative dispatch

From 01/01/2022 To 07/13/2022

8734 GWh

From 01/01/2023 To 07/13/2023

8230 GWh

The above figures are including contribution from roof top solar, non telemetered solar and mini hydro plants

Thermal Plant Fuel types

Power Station	Primary Fuel
CEB Thermal	
Sapugaskanda 1	Heavy Fuel
Sapugaskanda 2	Heavy Fuel
Kelanitissa Small Gas Turbines	Auto Diesel
GT 7 - Kelanitissa	Auto Diesel
Kelanitissa CCY	Naphtha or Diesel
Lakvijaya 1	Coal
Lakvijaya 2	Coal
Lakvijaya 3	Coal
Uthuru Janani	Heavy Fuel
Barge CEB	Heavy Fuel
KCCPS -2	Auto Diesel

Power Station	Primary Fuel
Private Thermal	
West Coast	Auto Diesel / Heavy Fuel

Major Incidents reported during the day

July 13, 2023

- 1). Matara – New Galle cct 02 tripped and A/R from Matara end only at 08:32hrs due to the operation of distance protection
- 2). New Laxapana Unit 02 tripped at 20:36hrs, rejecting 10MW from the system. The unit resumed generation at 22:44hrs.