

Generation and Reservoirs Statistics

July 11, 2023



PUBLIC UTILITIES COMMISSION OF SRI LANKA

1. Daily Generation Mix in MWh

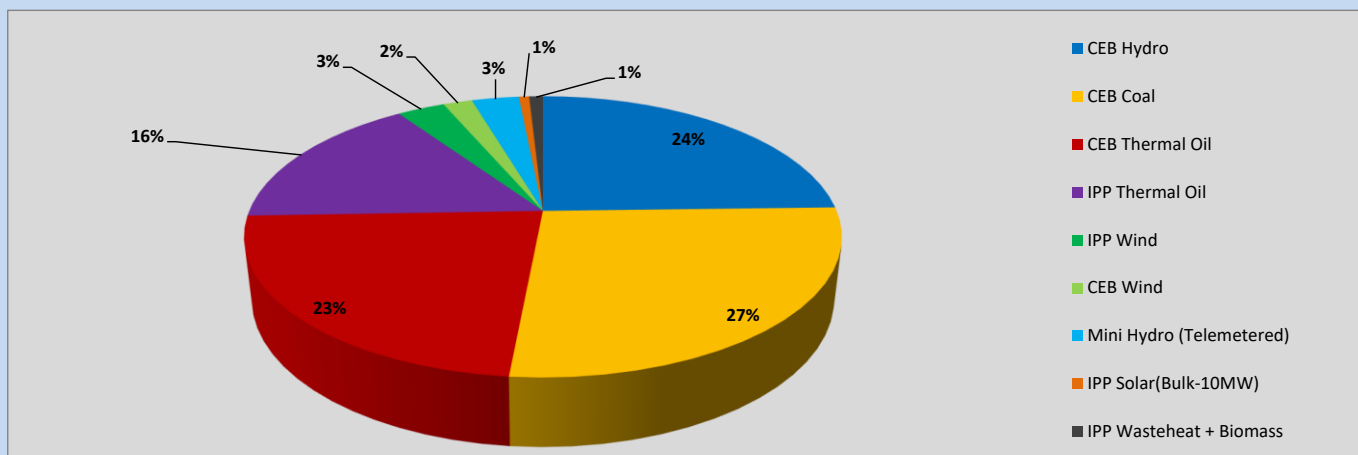


Table 01

CEB Hydro	10,218	MWh
CEB Coal	11,185	MWh
CEB Thermal Oil	9,535	MWh
IPP Thermal Oil	6,639	MWh
IPP Wind	1,284	MWh
CEB Wind	780	MWh
Mini Hydro (Telemetered)	1,268	MWh
IPP Solar (Bulk)	279	MWh
IPP Wasteheat + Biomass	368	MWh
Total Generation (Excluding estimated figures)	41,556	MWh
* Estimated unserved energy	0	MWh
* Estimated Mini Hydro (Non telemetered)	2,242	MWh
* Estimated IPP Solar PV (Bulk 1-10MW)	304	MWh
* Estimated Solar Roof Top PV	1,650	MWh
Total Generation (Including estimated figures)	45,752	MWh

* Estimated figures of CEB generation report

2. Cumulative Dispatch

Following data excludes the contribution from roof top solar, non telemetered solar and mini hydro plants

Table 02 - Current Month

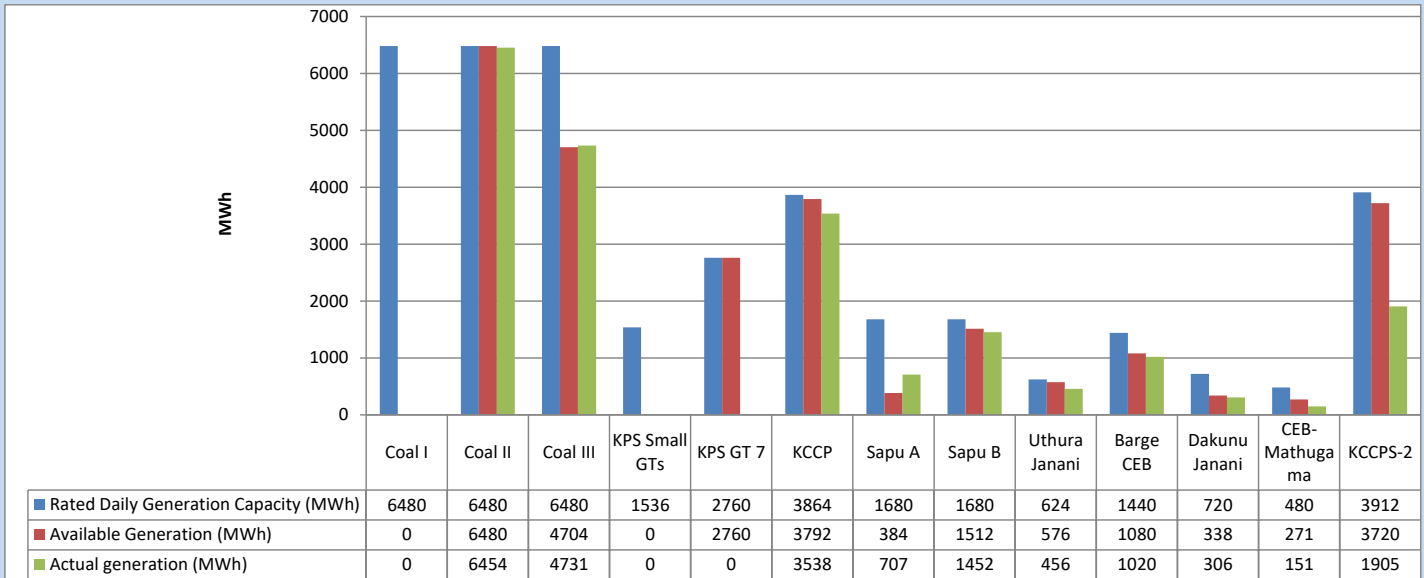
Category	Dispatch (GWh)	
CEB Hydro	132	32.94%
CEB Coal	120	29.84%
CEB Thermal Oil	50	12.49%
IPP Thermal	38	9.38%
SPP Wind	19	4.83%
CEB Wind	17	4.27%
Mini Hydro (Telemetered)	18	4.59%
IPP Solar (Bulk-10MW)	3	0.75%
IPP Wasteheat + BMP	4	0.91%
Total	401	

Table 03 - Current Year

Category	Dispatch (GWh)	
CEB Hydro	1,870	25.43%
CEB Coal	3,002	40.83%
CEB Thermal Oil	1,134	15.42%
IPP Thermal	692	9.40%
SPP Wind	171	2.32%
CEB Wind	181	2.46%
Mini Hydro (Telemetered)	184	2.51%
IPP Solar (Bulk-10MW)	56	0.76%
IPP Wasteheat	64	0.87%
Total	7,353	

3. CEB owned Thermal Plant Dispatch

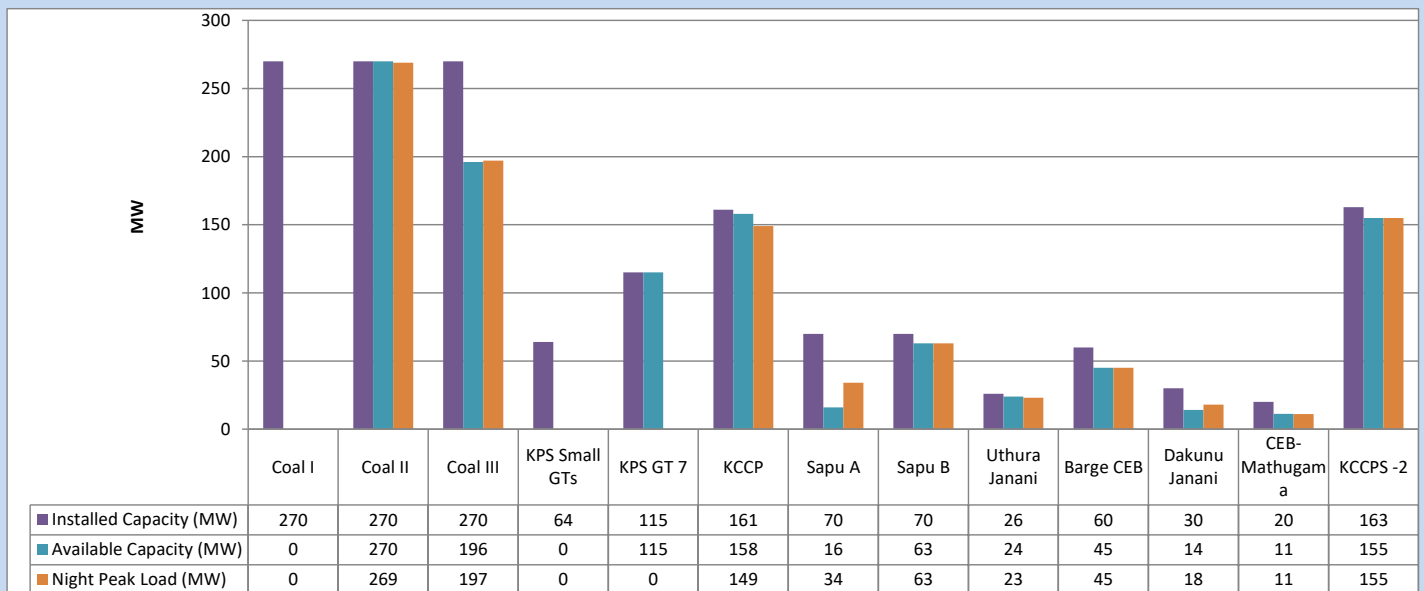
July 11, 2023



Available Generation is estimated based on plant availability at 6.00am on

July 12, 2023

4. CEB owned Thermal Plant Loading at the Night Peak

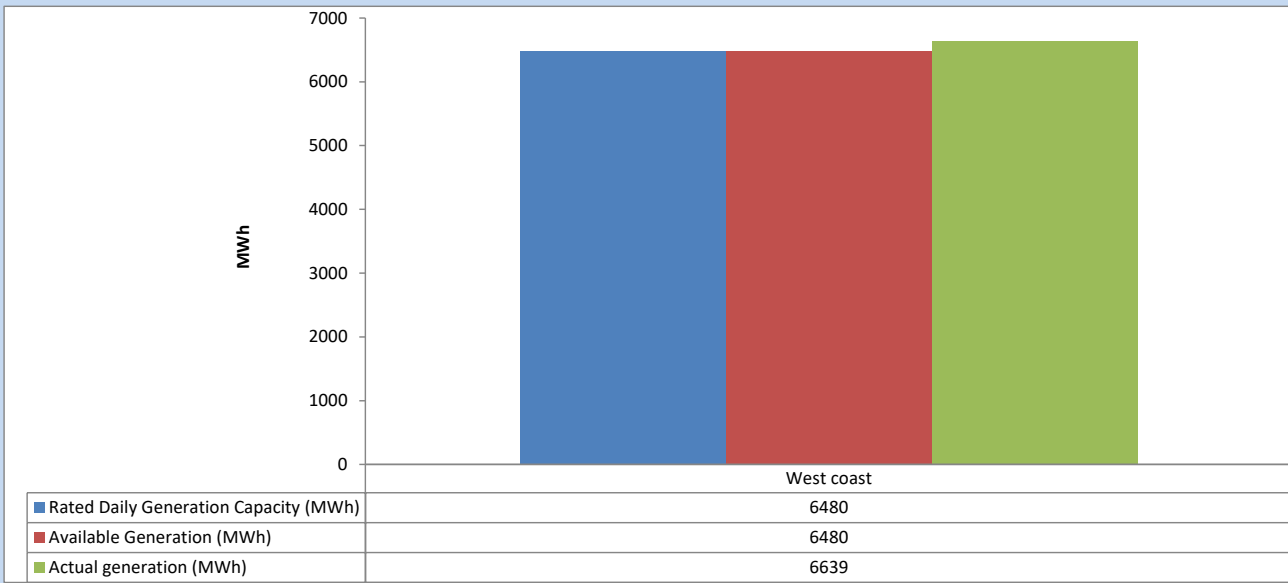


Plant availability is recorded at 6.00 am on

July 12, 2023

5. IPP owned Thermal Plant Dispatch

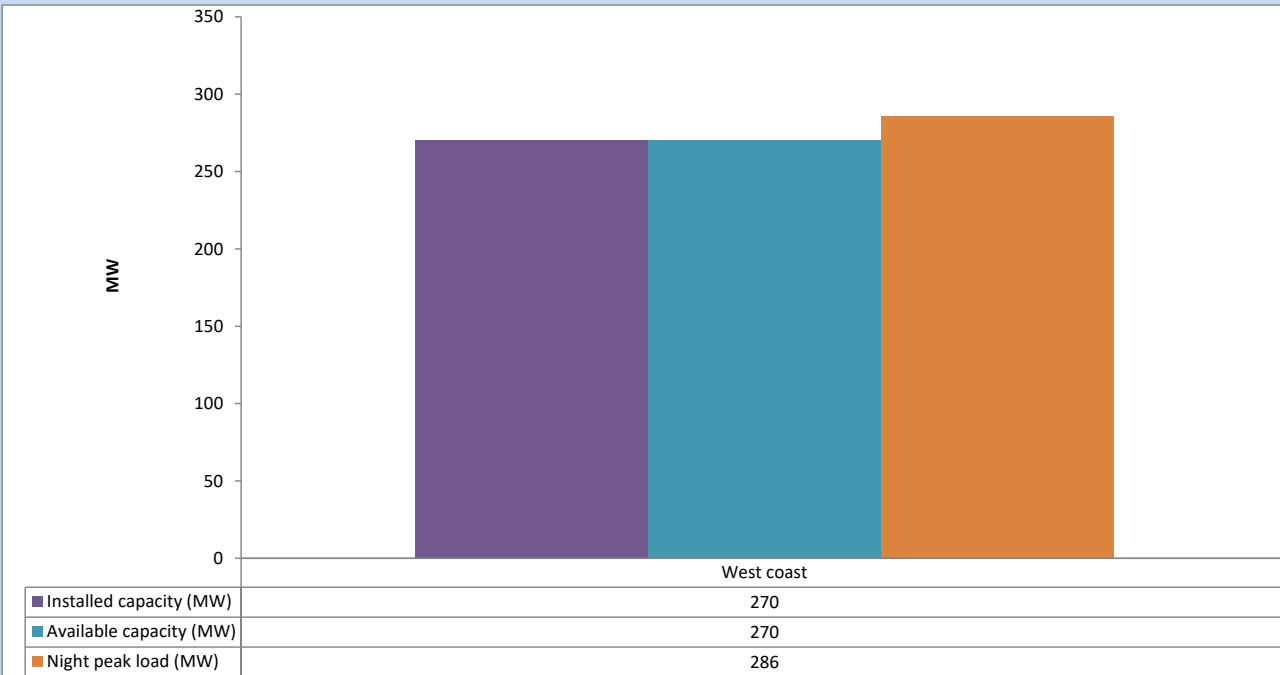
July 11, 2023



Available Generation is estimated based on plant availability at 6.00am on

July 12, 2023

6. IPP owned Thermal Plant Loading at the Night Peak

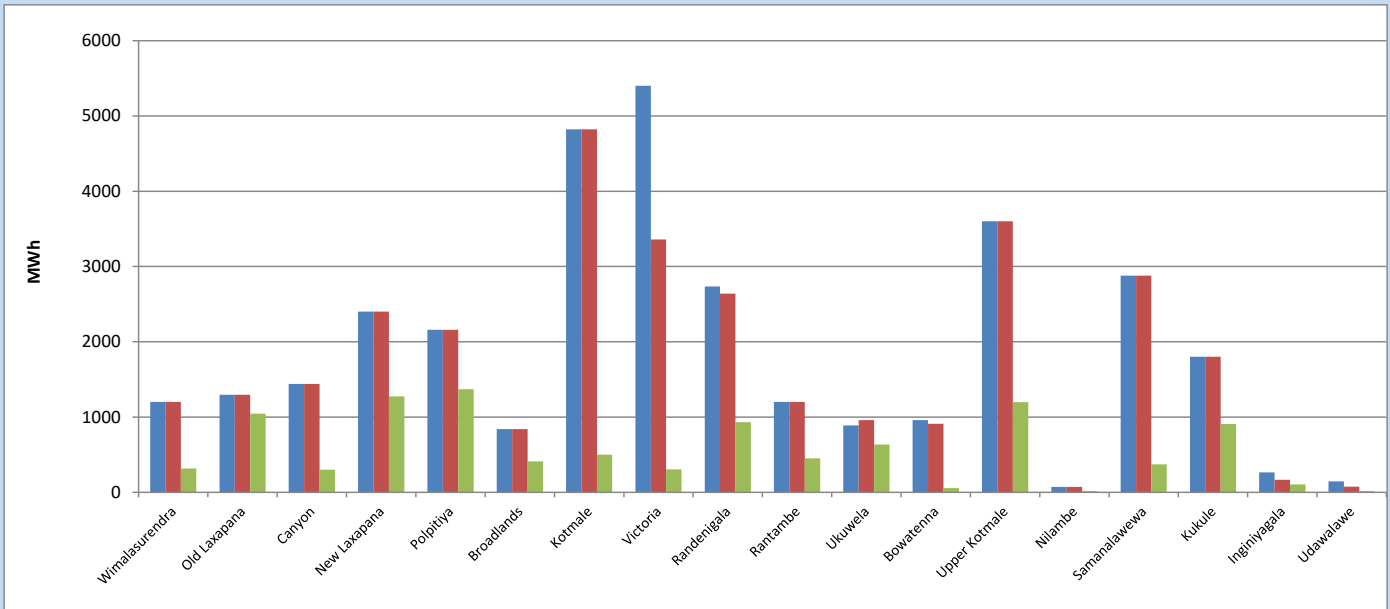


Plant availability is recorded at 6.00 am on

July 12, 2023

7. Major Hydro Plant Dispatch

July 11, 2023

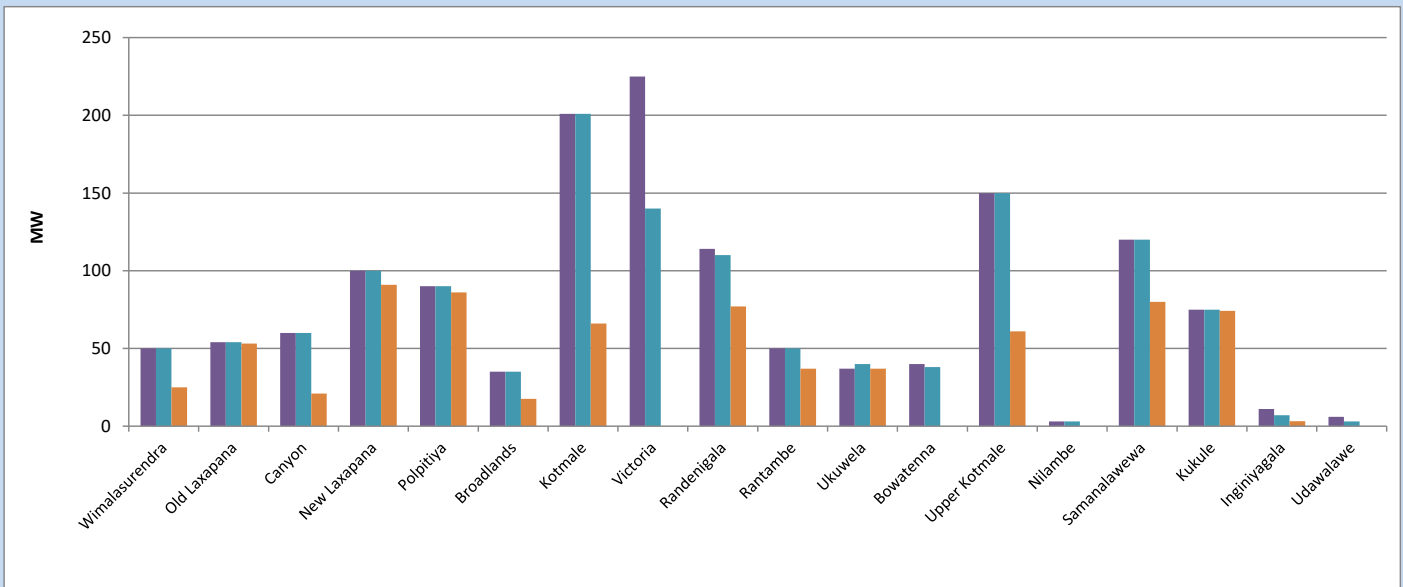


Available Generation is estimated based on plant availability at 6.00am on
Broadlands power plant is operating in the Commissioning Stage

July 12, 2023

8. Major Hydro Plant Loading at Night Peak

July 11, 2023



Plant availability is recorded at 6.00 am on
Broadlands power plant is operating in the Commissioning Stage

July 12, 2023

9. Summary of Major Plant performance

Table 04

Plant	Installed Capacity	Plant Availability	Night peak Load	Plant Dispatch
	(MW)	(MW)	(MW)	(MWh)
Wimalasurendra	50	50	25	316
Old Laxapana	54	54	53	1,045
Canyon	60	60	21	303
New Laxapana	100	100	91	1,274
Polpitiya	90	90	86	1,369
Broadlands	35	35	18	413
Kotmale	201	201	66	500
Victoria	225	140	0	306
Randenigala	114	110	77	932
Rantambe	50	50	37	452
Ukuwela	37	40	37	636
Bowatenna	40	38	0	57
Upper Kotmale	150	150	61	1,198
Nilambe	3	3	0	16
Samanalawewa	120	120	80	371
Kukule	75	75	74	908
Inginiyagala	11	7	3	106
Udawalawe	6	3	0	16
Puttalam Coal I	270	0	0	0
Puttalam Coal II	270	270	269	6,454
Puttalam Coal III	270	196	197	4,731
KPS Small GTs	64	0	0	0
KPS GT 7	115	115	0	0
KCCP	161	158	149	3,538
Sapugaskanda A	70	16	34	707
Sapugaskanda B	70	63	63	1,452
Uthura Janani	26	24	23	456
Barge CEB	60	45	45	1,020
CEB-Hambantota	30	14	18	306
CEB-Mathugama	20	11	11	151
ACE Matara	24	0	0	0
Asia Power	50	0	0	0
KCCPS -2	163	155	155	1,905
West Coast	270	270	286	6,639
Nothern Power	36	0	0	0
ACE Embilipitiya	93	0	0	0
Total	3,483	2,664	2,168	41,556

Plant availability is the availability recorded at 6 am on

July 12, 2023

10. Contribution to the Night Peak in MW

July 11, 2023

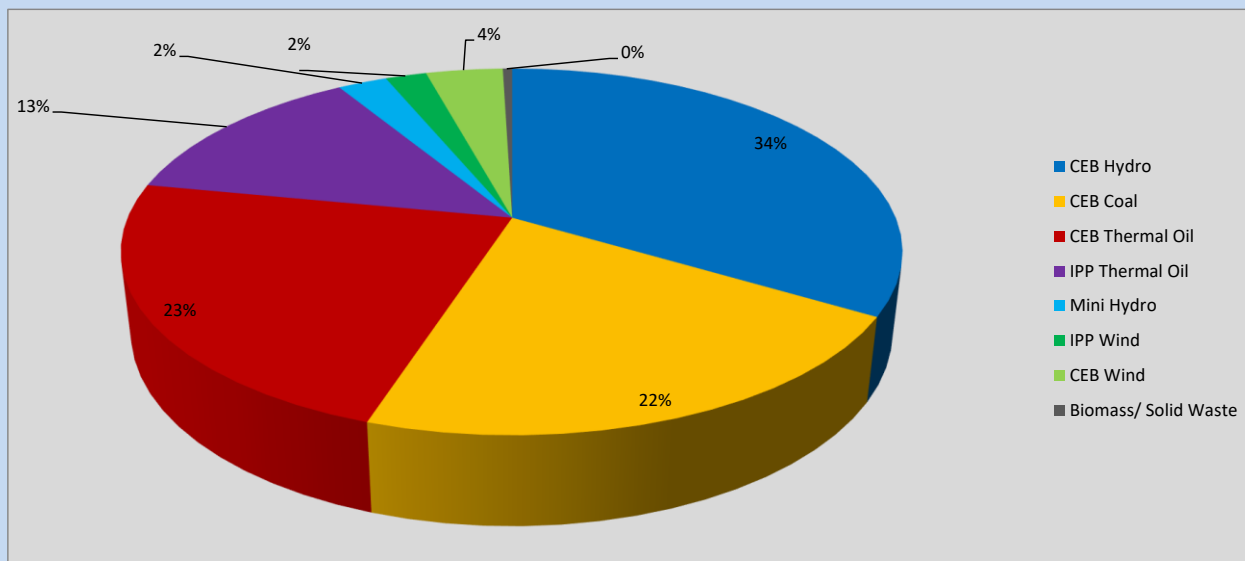


Table 05

CEB Hydro	724	MW
CEB Coal	466	MW
CEB Thermal Oil	498	MW
IPP Thermal Oil	286	MW
Mini Hydro (Telemetered)	53	MW
IPP Wind	43.9	MW
CEB Wind	82.2	MW
Biomass/ Solid Waste	10	MW

Recorded Peak Demand Data

Table 06

Night Peak*	2,163	MW
Day Peak Maximum Demand	1,954	MW
Day Peak Minimum Demand	1,755	MW
Off Peak Minimum Demand	1,244	MW

Above figures are excluding contribution from roof top solar, non telemetered solar and mini hydro plants

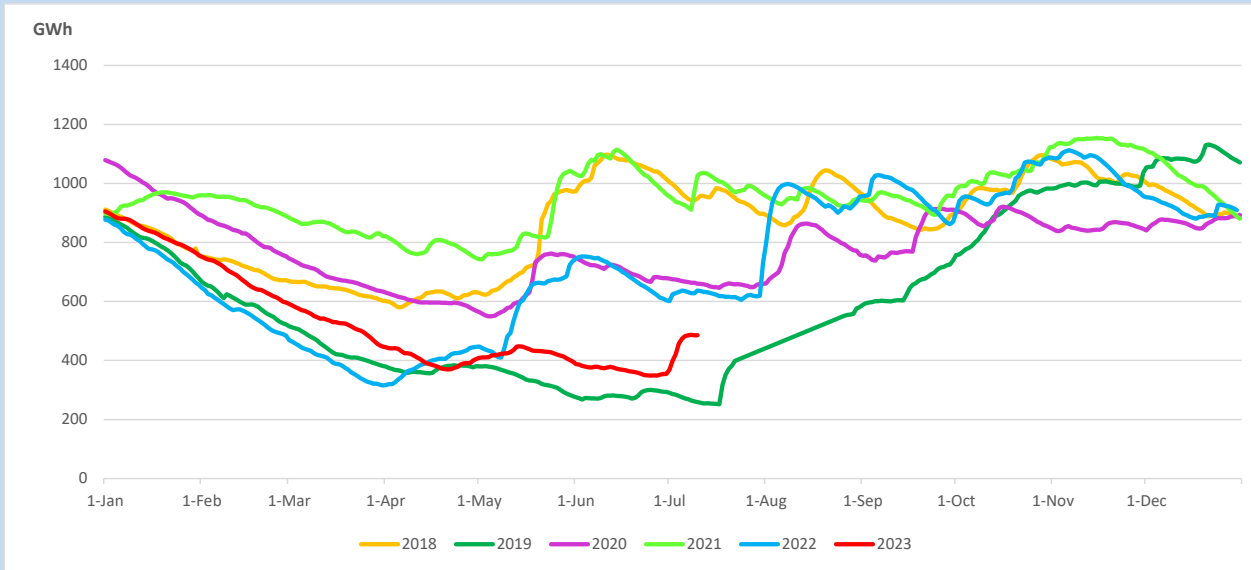
Reservoir Levels -

as at 06.00 Hr on July 12, 2023

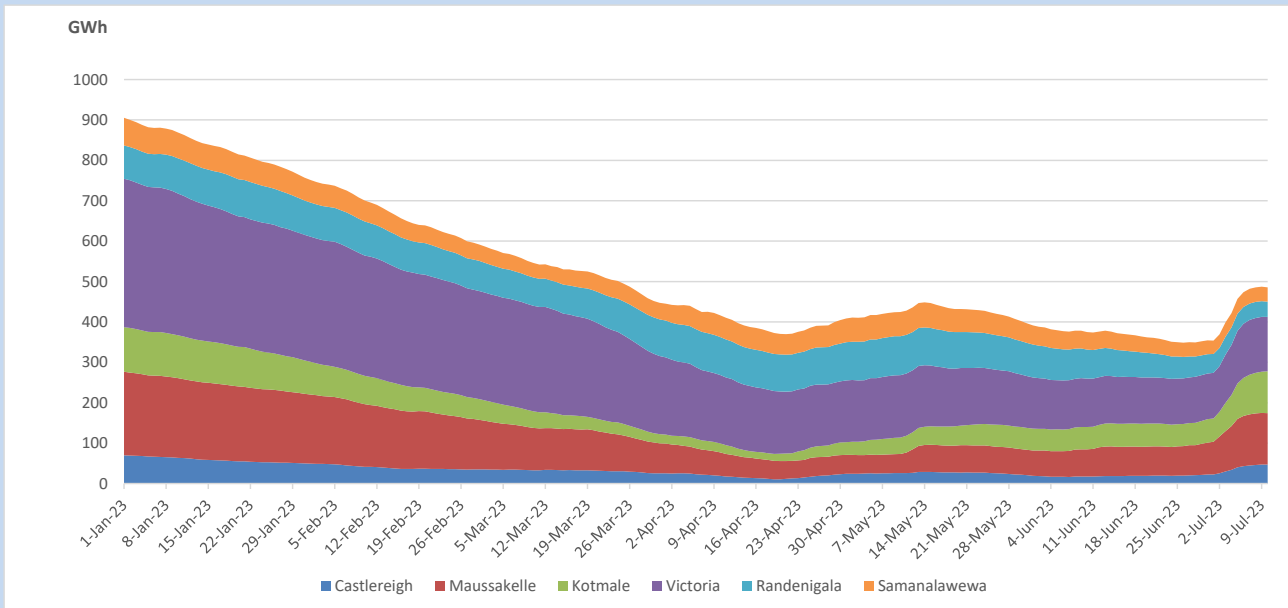


Total Reservoir Level 485.7 GWh
 % of Total capacity 40.3%

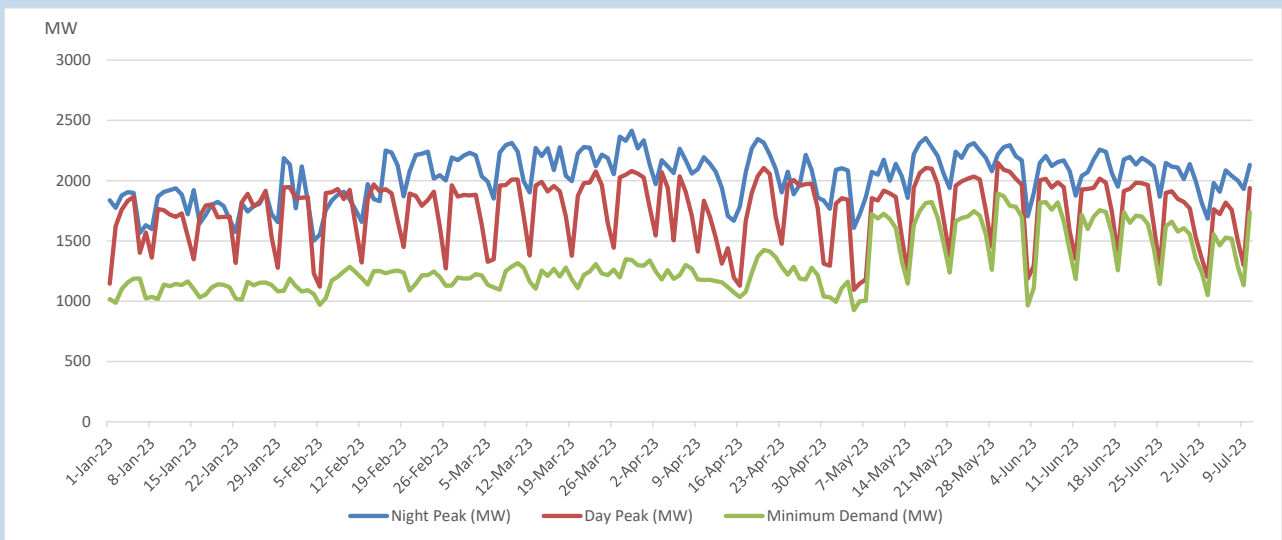
11. Comparison of Total Reservoir Storage Levels with Past Years



12. Variation of Major Hydro Reservoir Levels in the current year (GWh)



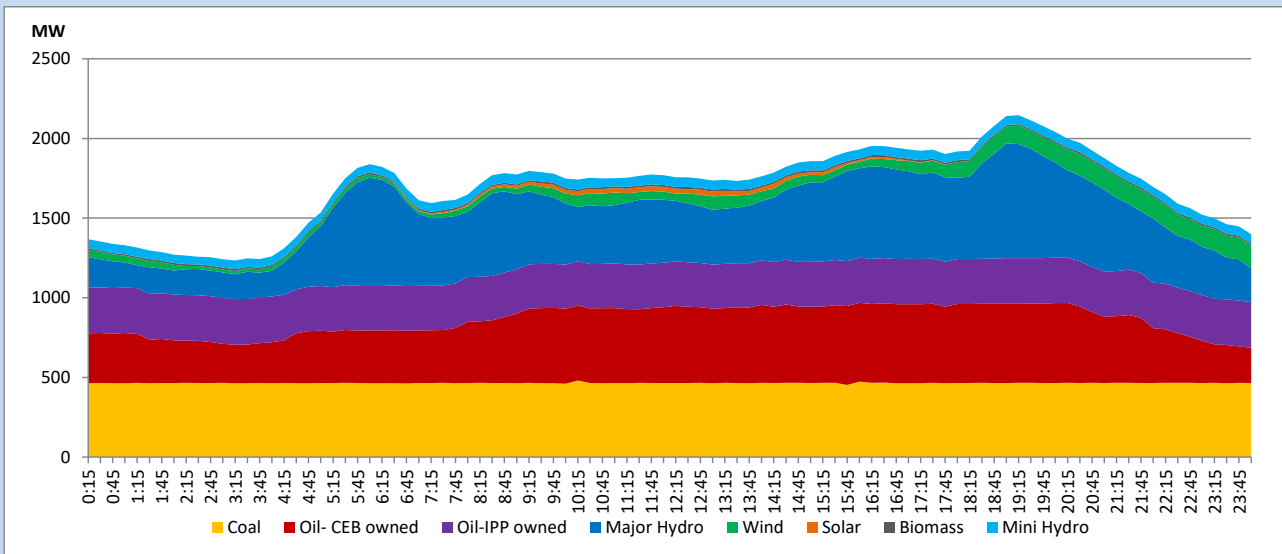
13. Variation of Demand during the current year



The above figures are excluding contribution from roof top solar, non telemetered solar and mini hydro plants

14. Daily Load Curve

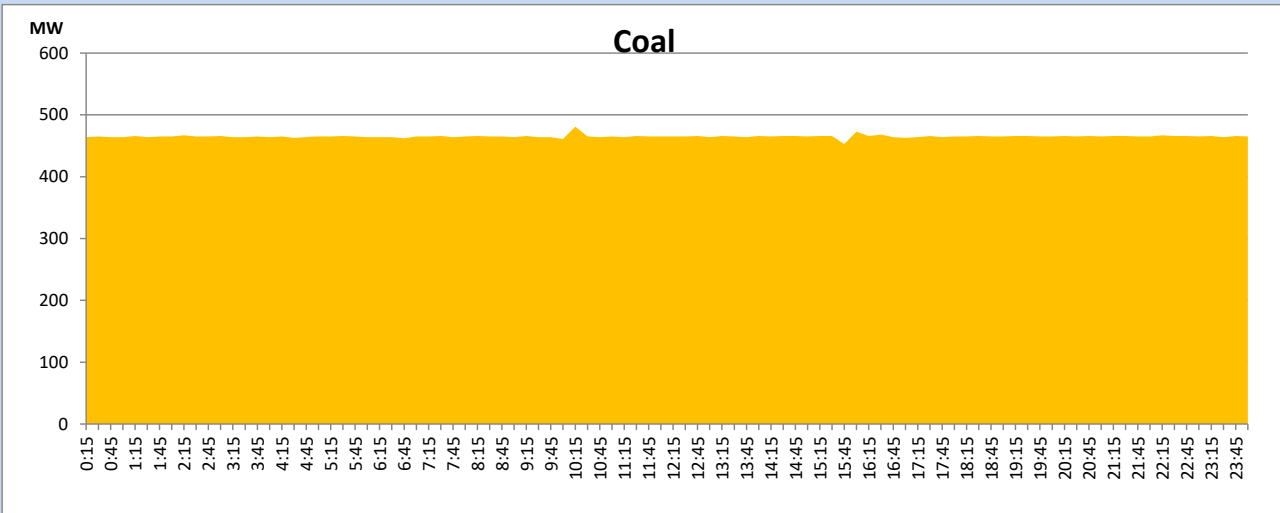
July 11, 2023



Solar and wind data is based on Telemetered Power Stations only

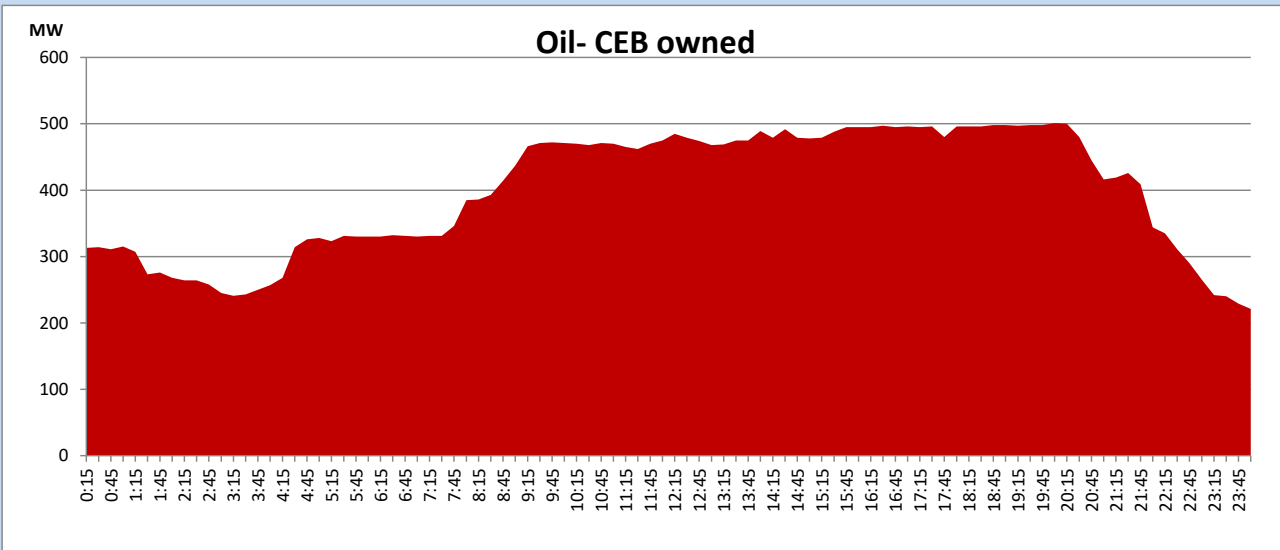
Coal Generation during

July 11, 2023



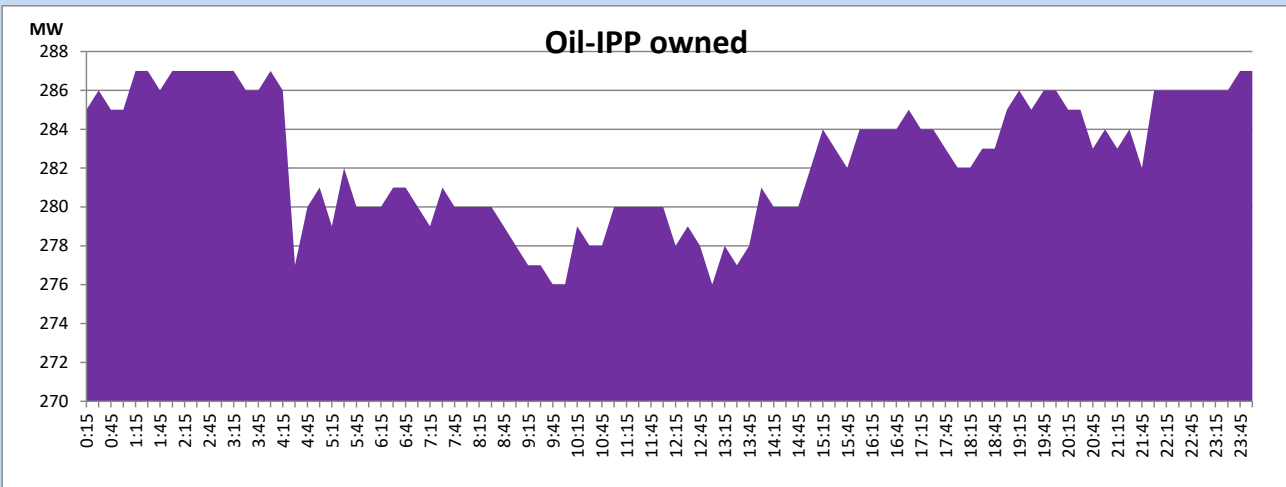
CEB Oil Plant Generation during

July 11, 2023



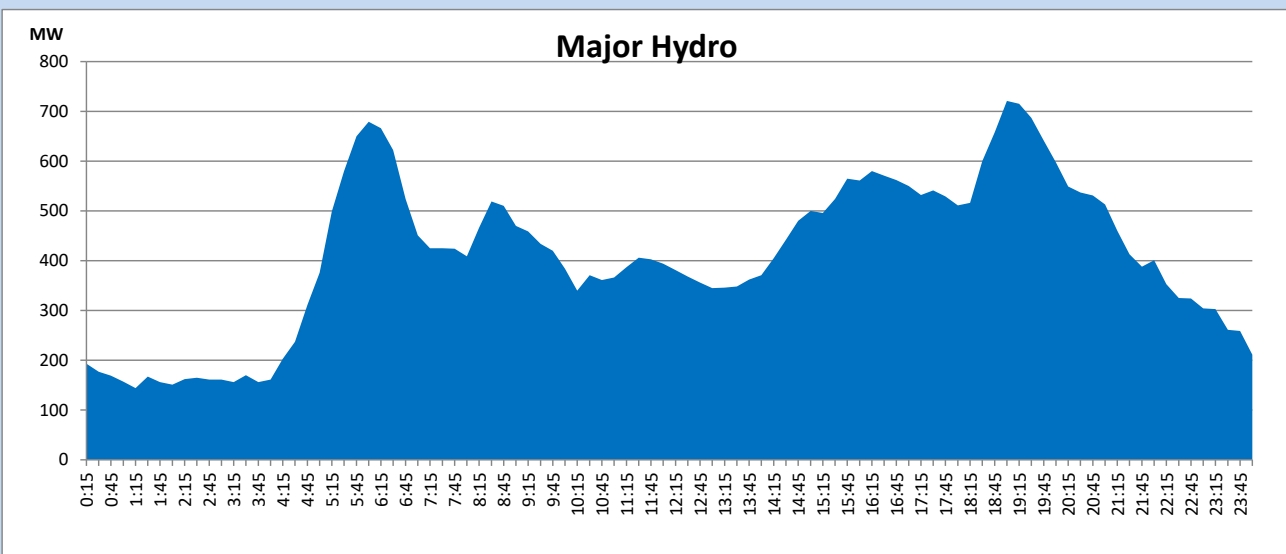
IPP Oil Plant Generation during

July 11, 2023



Major Hydro Generation during

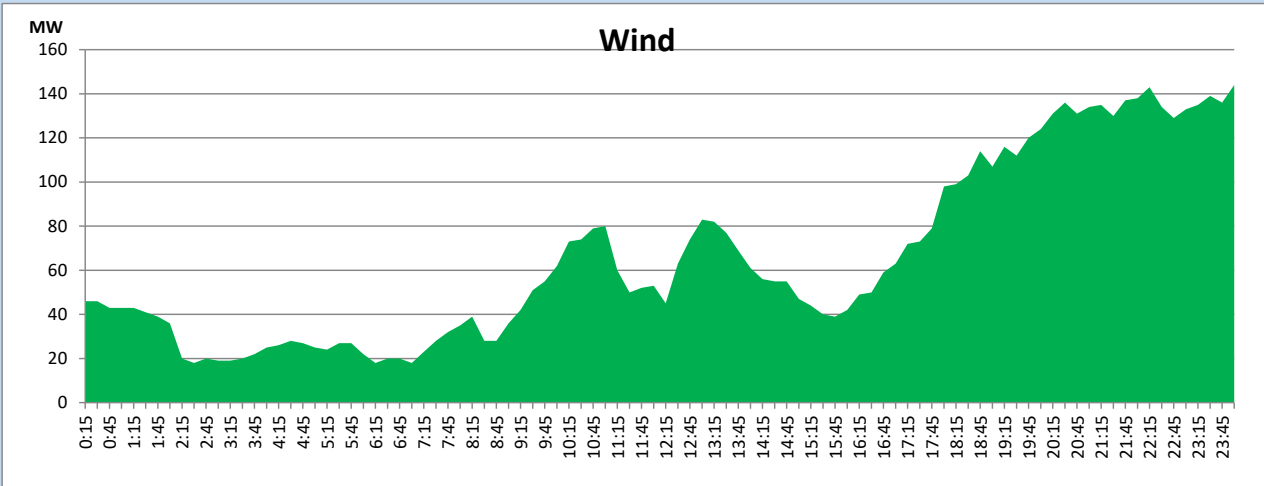
July 11, 2023



Wind Generation during

July 11, 2023

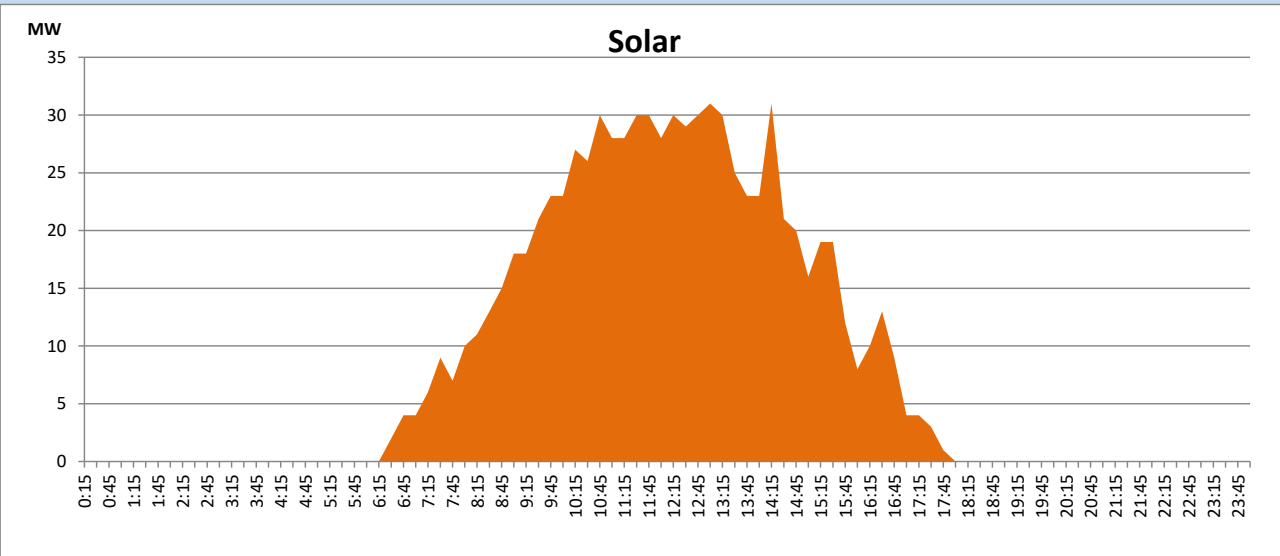
Based on Telemetered Power Stations only



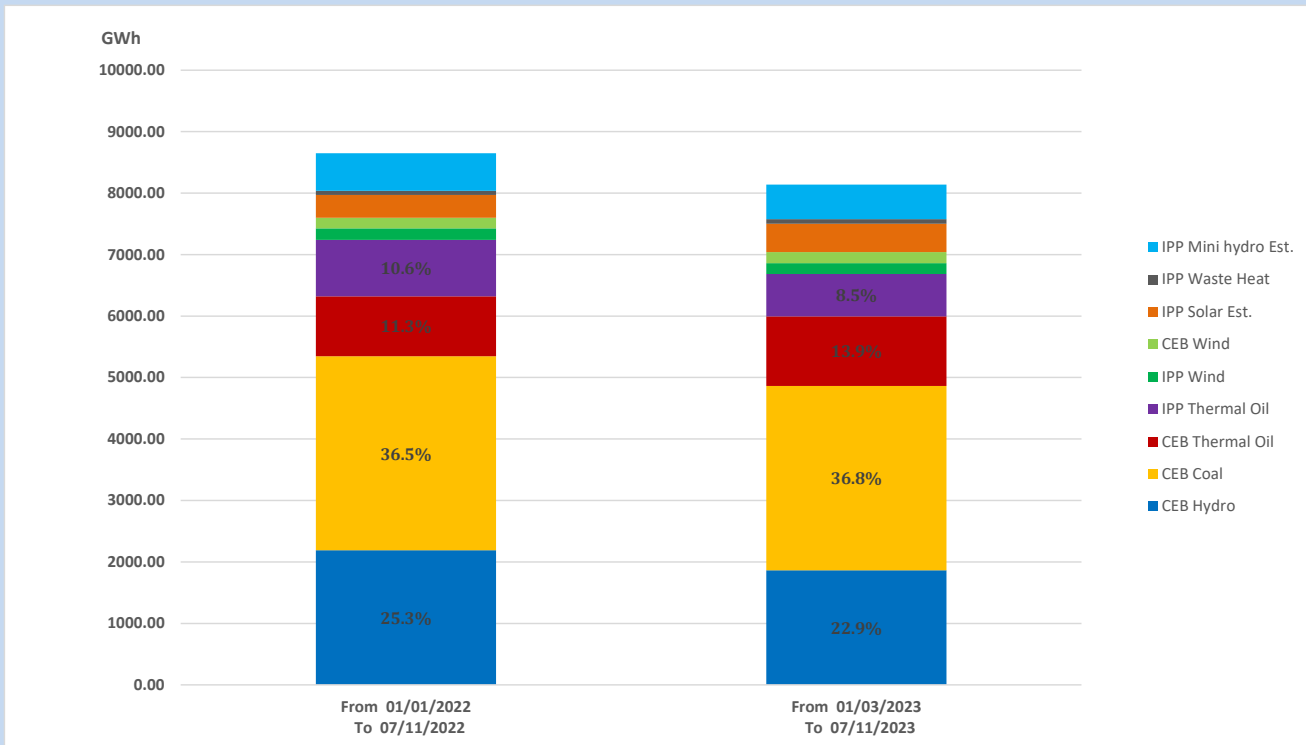
Solar Generation during

July 11, 2023

Based on Telemetered Power Stations only



15. Cumulative Dispatch Comparison with Last Year



Cumulative dispatch

From 01/01/2022 To 07/11/2022

8649 GWh

From 01/01/2023 To 07/11/2023

8138 GWh

The above figures are including contribution from roof top solar, non telemetered solar and mini hydro plants

Thermal Plant Fuel types

Power Station	Primary Fuel
CEB Thermal	
Sapugaskanda 1	Heavy Fuel
Sapugaskanda 2	Heavy Fuel
Kelanitissa Small Gas Turbines	Auto Diesel
GT 7 - Kelanitissa	Auto Diesel
Kelanitissa CCY	Naphtha or Diesel
Lakvijaya 1	Coal
Lakvijaya 2	Coal
Lakvijaya 3	Coal
Uthuru Janani	Heavy Fuel
Barge CEB	Heavy Fuel
KCCPS -2	Auto Diesel

Power Station	Primary Fuel
Private Thermal	
West Coast	Auto Diesel / Heavy Fuel

Major Incidents reported during the day

July 11, 2023

Nil.