

# Generation and Reservoirs Statistics

July 10, 2023



PUBLIC UTILITIES COMMISSION OF SRI LANKA

## 1. Daily Generation Mix in MWh

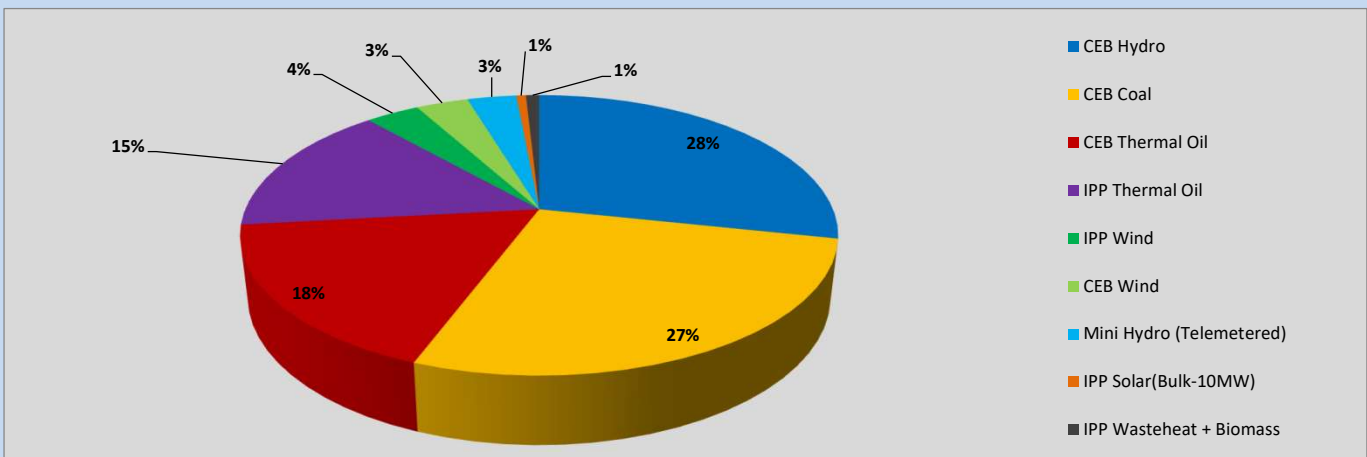


Table 01

CEB Hydro	11,505	MWh
CEB Coal	11,119	MWh
CEB Thermal Oil	7,108	MWh
IPP Thermal Oil	6,190	MWh
IPP Wind	1,412	MWh
CEB Wind	1,371	MWh
Mini Hydro (Telemetered)	1,290	MWh
IPP Solar (Bulk)	252	MWh
IPP Wasteheat + Biomass	348	MWh
<b>Total Generation (Excluding estimated figures)</b>	<b>40,595</b>	<b>MWh</b>
* Estimated unserved energy	0	MWh
* Estimated Mini Hydro (Non telemetered)	2220	MWh
* Estimated IPP Solar PV (Bulk 1-10MW)	304	MWh
* Estimated Solar Roof Top PV	1650	MWh
<b>Total Generation (Including estimated figures)</b>	<b>44,769</b>	<b>MWh</b>

\* Estimated figures of CEB generation report

## 2. Cumulative Dispatch

Following data excludes the contribution from roof top solar, non telemetered solar and mini hydro plants

Table 02 - Current Month

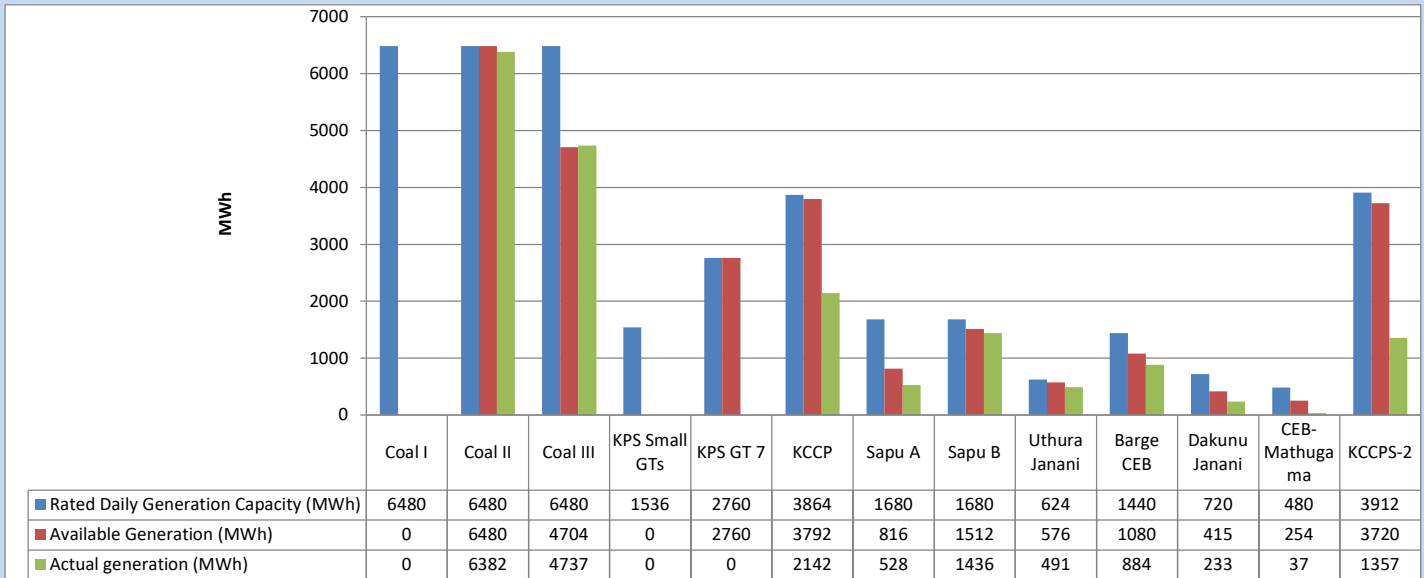
Category	Dispatch (GWh)	
CEB Hydro	122	33.91%
CEB Coal	108	30.18%
CEB Thermal Oil	40	11.28%
IPP Thermal	31	8.61%
SPP Wind	18	5.03%
CEB Wind	16	4.55%
Mini Hydro (Telemetered)	17	4.77%
IPP Solar (Bulk-10MW)	3	0.76%
IPP Wasteheat + BMP	3	0.91%
<b>Total</b>	<b>359</b>	

Table 03 - Current Year

Category	Dispatch (GWh)	
CEB Hydro	1,860	25.43%
CEB Coal	2,991	40.91%
CEB Thermal Oil	1,124	15.37%
IPP Thermal	685	9.37%
SPP Wind	169	2.32%
CEB Wind	180	2.47%
Mini Hydro (Telemetered)	183	2.50%
IPP Solar (Bulk-10MW)	56	0.76%
IPP Wasteheat	63	0.87%
<b>Total</b>	<b>7,312</b>	

### 3. CEB owned Thermal Plant Dispatch

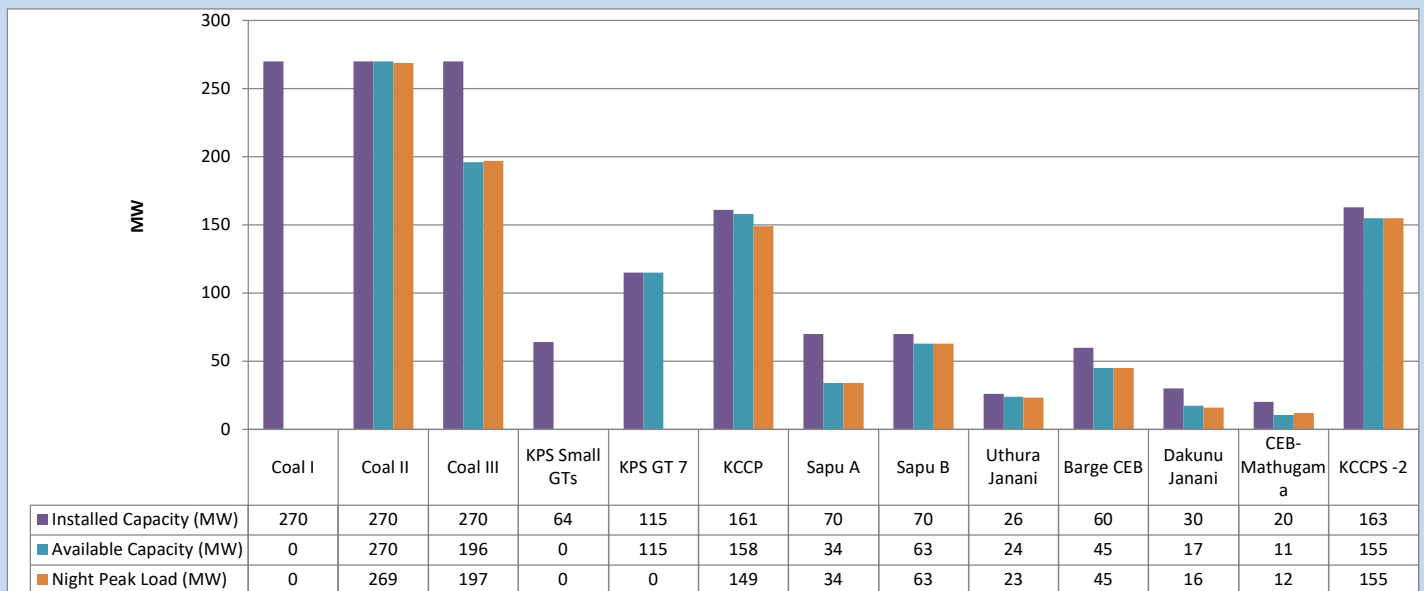
July 10, 2023



Available Generation is estimated based on plant availability at 6.00am on

July 11, 2023

### 4. CEB owned Thermal Plant Loading at the Night Peak

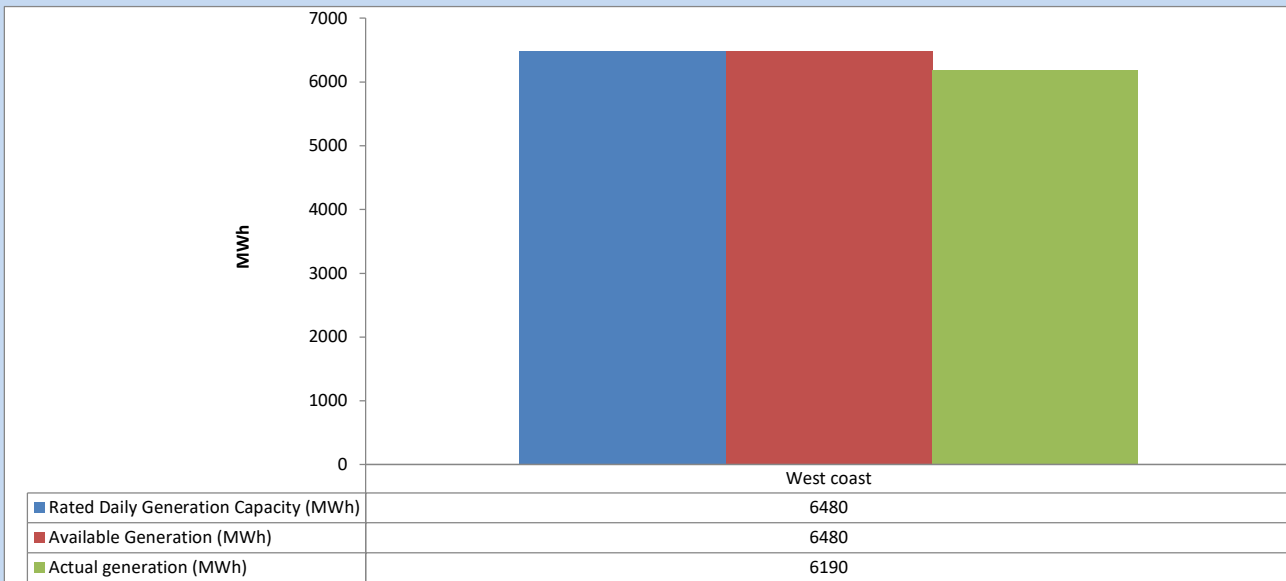


Plant availability is recorded at 6.00 am on

July 11, 2023

## 5. IPP owned Thermal Plant Dispatch

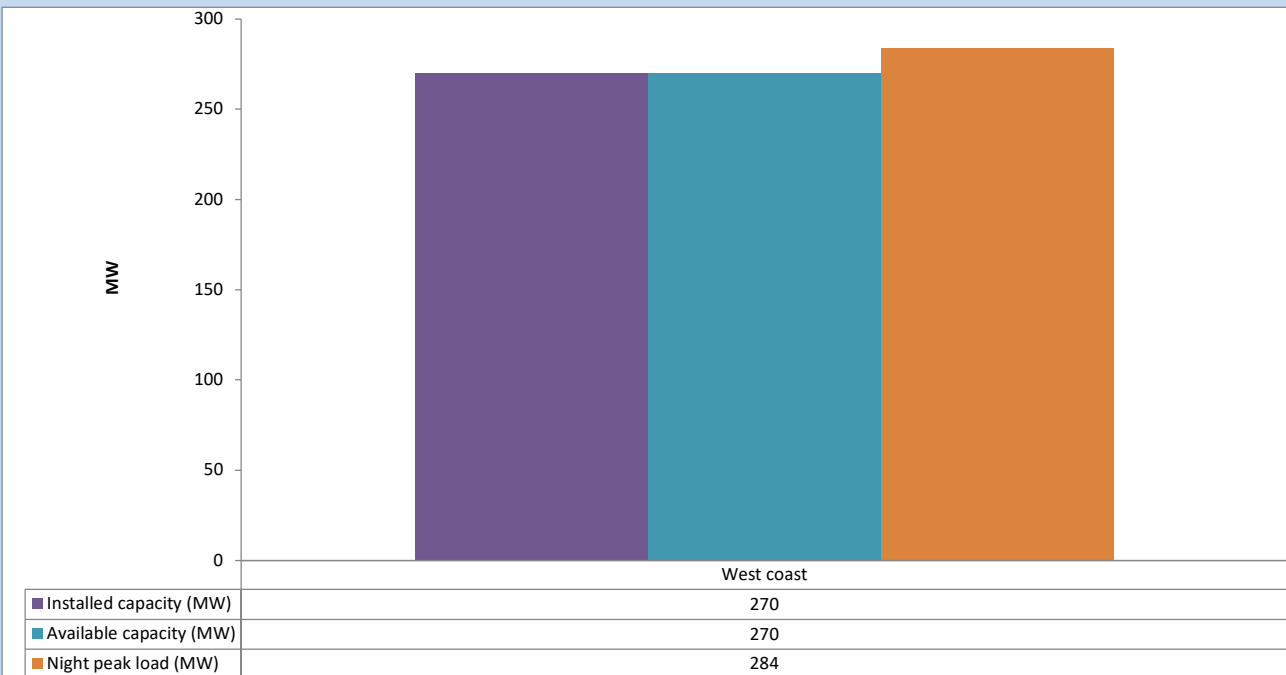
July 10, 2023



Available Generation is estimated based on plant availability at 6.00am on

July 11, 2023

## 6. IPP owned Thermal Plant Loading at the Night Peak

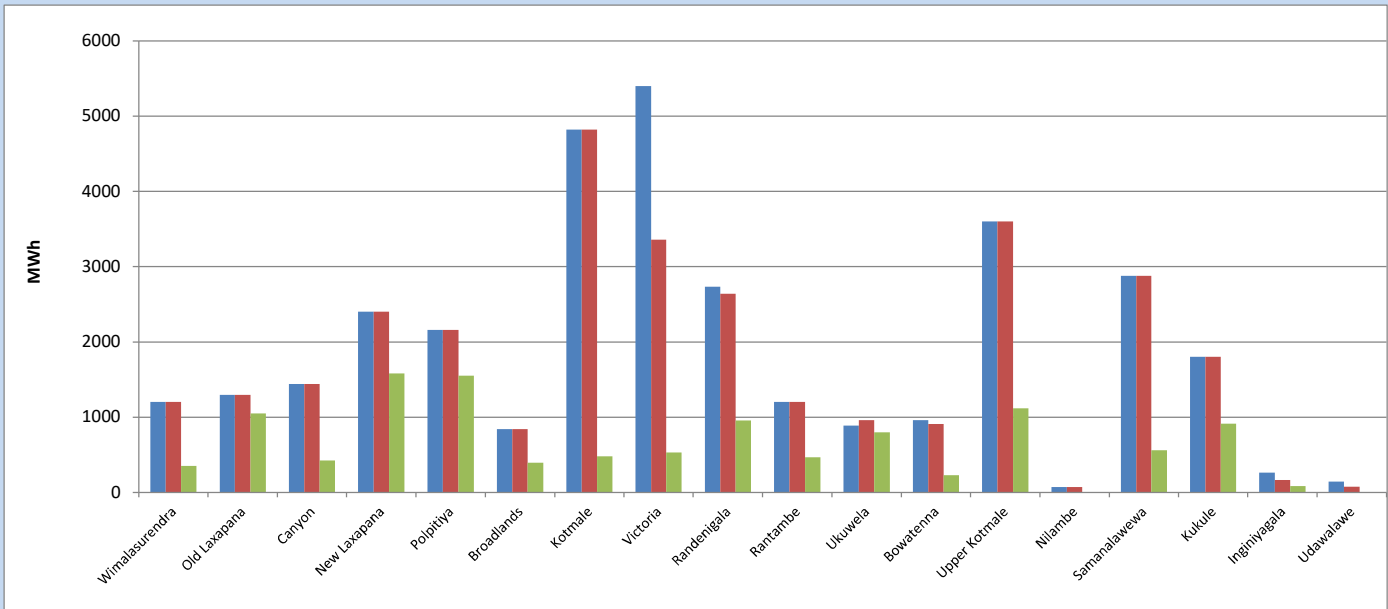


Plant availability is recorded at 6.00 am on

July 11, 2023

## 7. Major Hydro Plant Dispatch

July 10, 2023

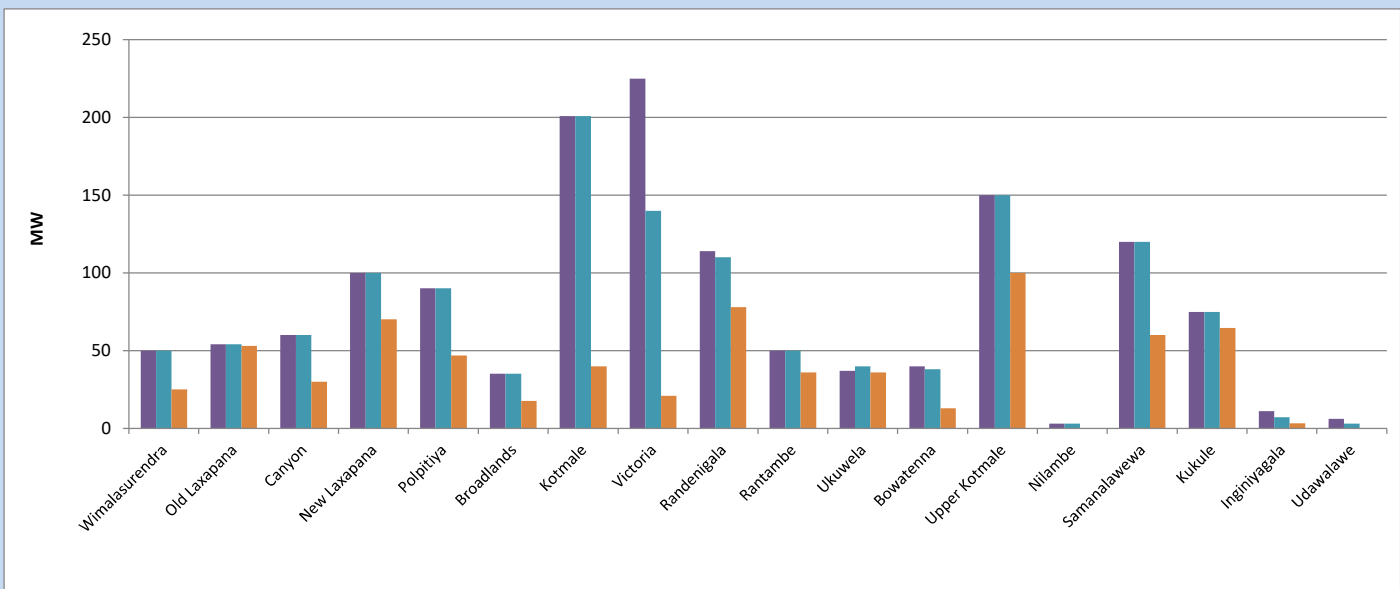


Available Generation is estimated based on plant availability at 6.00am on  
Broadlands power plant is operating in the Commissioning Stage

July 11, 2023

## 8. Major Hydro Plant Loading at Night Peak

July 10, 2023



Plant availability is recorded at 6.00 am on  
Broadlands power plant is operating in the Commissioning Stage

July 11, 2023

## 9. Summary of Major Plant performance

**Table 04**

Plant	Installed Capacity	Plant Availability	Night peak Load	Plant Dispatch
	(MW)	(MW)	(MW)	(MWh)
Wimalasurendra	50	50	25	355
Old Laxapana	54	54	53	1,053
Canyon	60	60	30	427
New Laxapana	100	100	70	1,581
Polpitiya	90	90	47	1,553
Broadlands	35	35	18	395
Kotmale	201	201	40	480
Victoria	225	140	21	532
Randenigala	114	110	78	957
Rantambe	50	50	36	468
Ukuwela	37	40	36	796
Bowatenna	40	38	13	230
Upper Kotmale	150	150	100	1,118
Nilambe	3	3	0	0
Samanalawewa	120	120	60	563
Kukule	75	75	65	913
Inginiyagala	11	7	3	84
Udawalawe	6	3	0	0
Puttalam Coal I	270	0	0	0
Puttalam Coal II	270	270	269	6,382
Puttalam Coal III	270	196	197	4,737
KPS Small GTs	64	0	0	0
KPS GT 7	115	115	0	0
KCCP	161	158	149	2,142
Sapugaskanda A	70	34	34	528
Sapugaskanda B	70	63	63	1,436
Uthura Janani	26	24	23	491
Barge CEB	60	45	45	884
CEB-Hambantota	30	17	16	233
CEB-Mathugama	20	11	12	37
ACE Matara	24	0	0	0
Asia Power	50	0	0	0
KCCPS -2	163	155	155	1,357
West Coast	270	270	284	6,190
Nothern Power	36	0	0	0
ACE Embilipitiya	93	0	0	0
<b>Total</b>	<b>3,483</b>	<b>2,684</b>	<b>2,128</b>	<b>40,595</b>

Plant availability is the availability recorded at 6 am on

July 11, 2023

### 10. Contribution to the Night Peak in MW

July 10, 2023

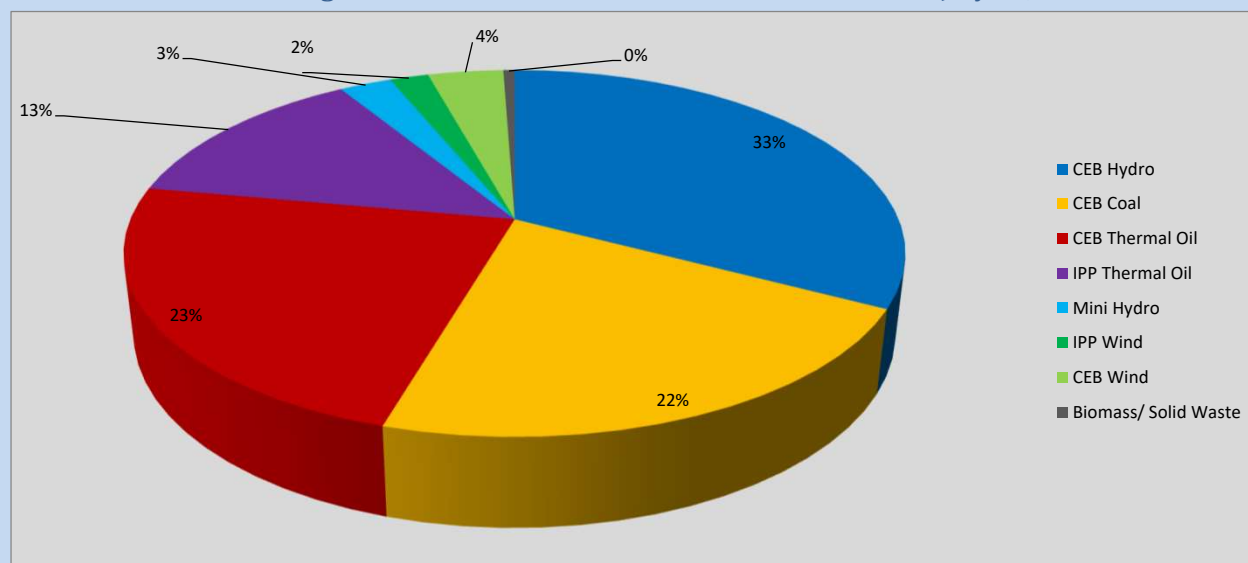


Table 05

CEB Hydro	696	MW
CEB Coal	466	MW
CEB Thermal Oil	497	MW
IPP Thermal Oil	284	MW
Mini Hydro (Telemetered)	55	MW
IPP Wind	40.8	MW
CEB Wind	79.5	MW
Biomass/ Solid Waste	12	MW

### Recorded Peak Demand Data

Table 06

Night Peak*	2,130	MW
Day Peak Maximum Demand	1,939	MW
Day Peak Minimum Demand	1,739	MW
Off Peak Minimum Demand	1,155	MW

Above figures are excluding contribution from roof top solar, non telemetered solar and mini hydro plants

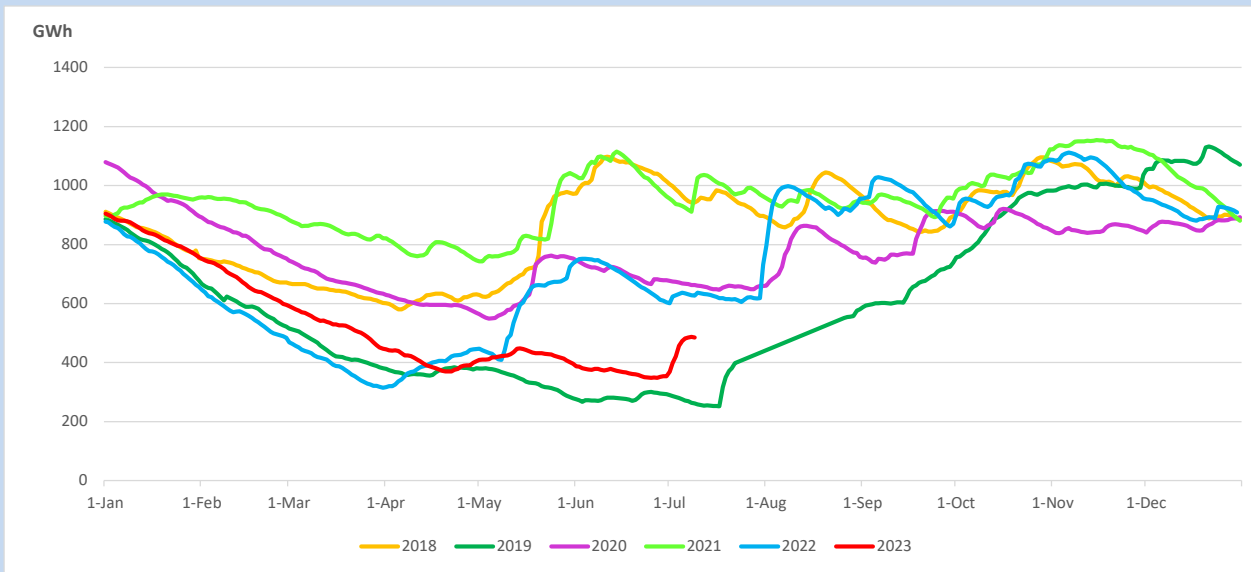
### Reservoir Levels -

as at 06.00 Hr on July 11, 2023

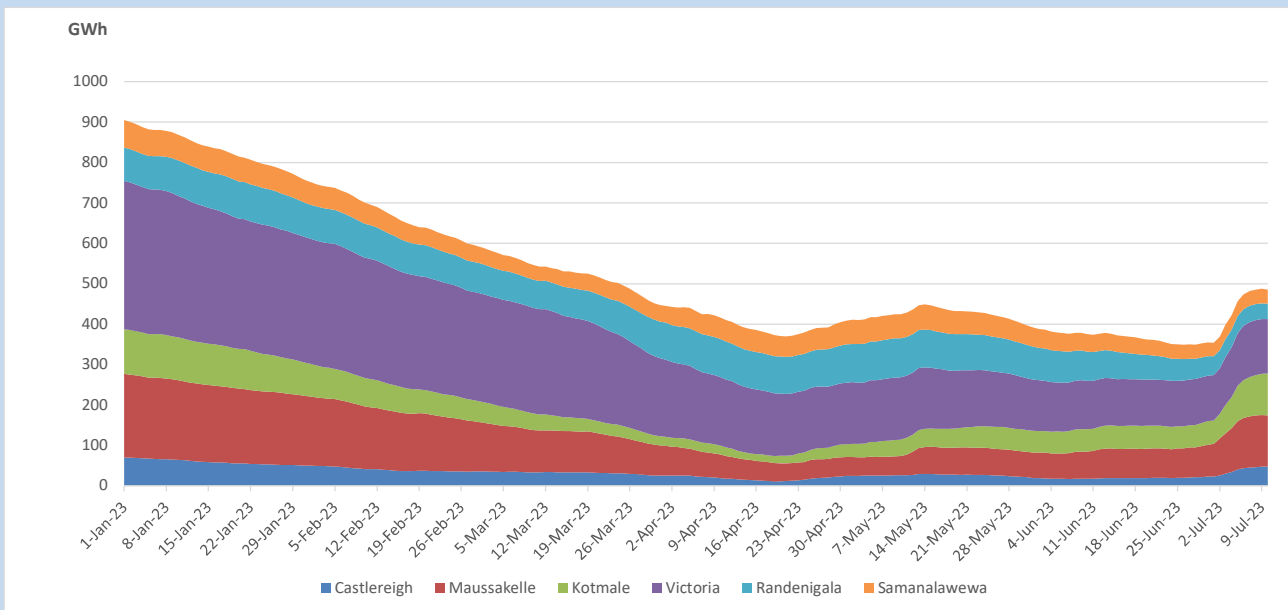


Total Reservoir Level 485.8 GWh  
 % of Total capacity 40.3%

## 11. Comparison of Total Reservoir Storage Levels with Past Years

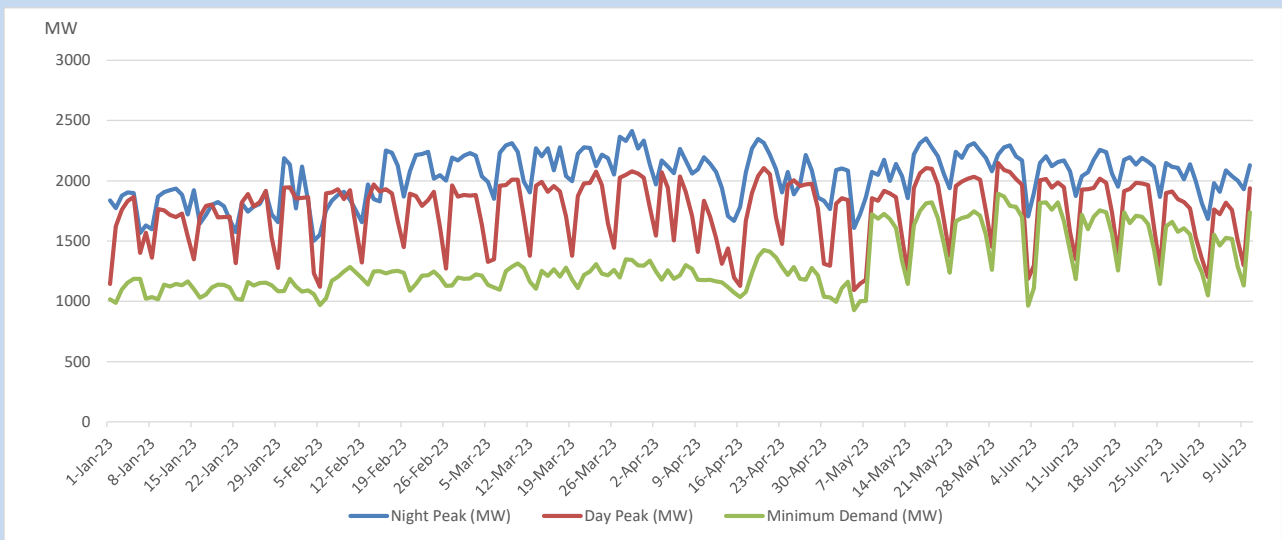


## 12. Variation of Major Hydro Reservoir Levels in the current year (GWh)





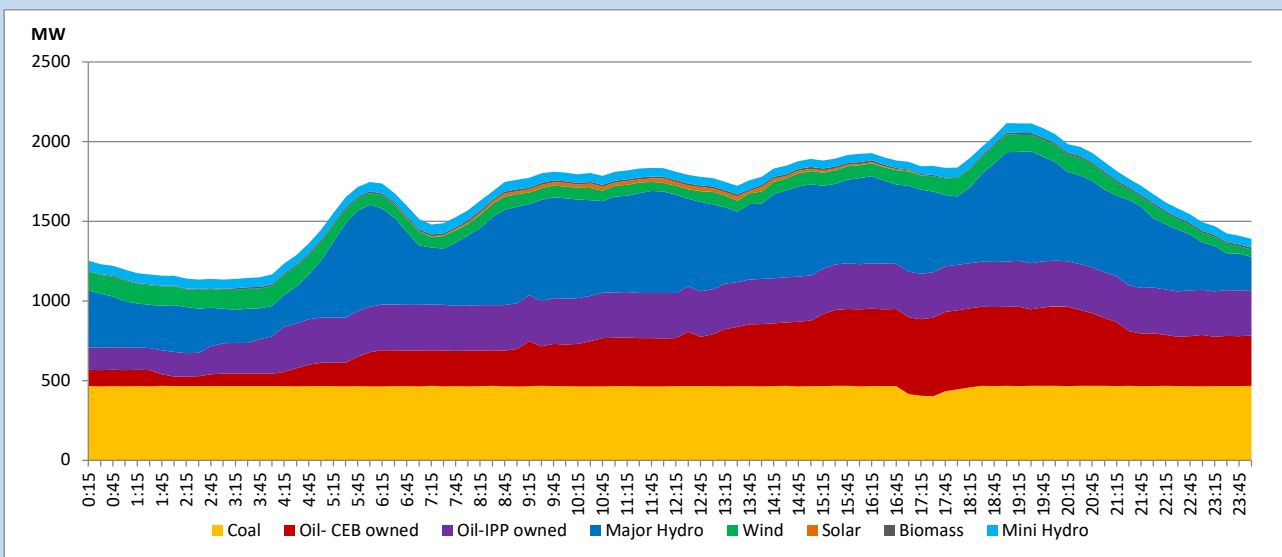
### 13. Variation of Demand during the current year



The above figures are excluding contribution from roof top solar, non telemetered solar and mini hydro plants

### 14. Daily Load Curve

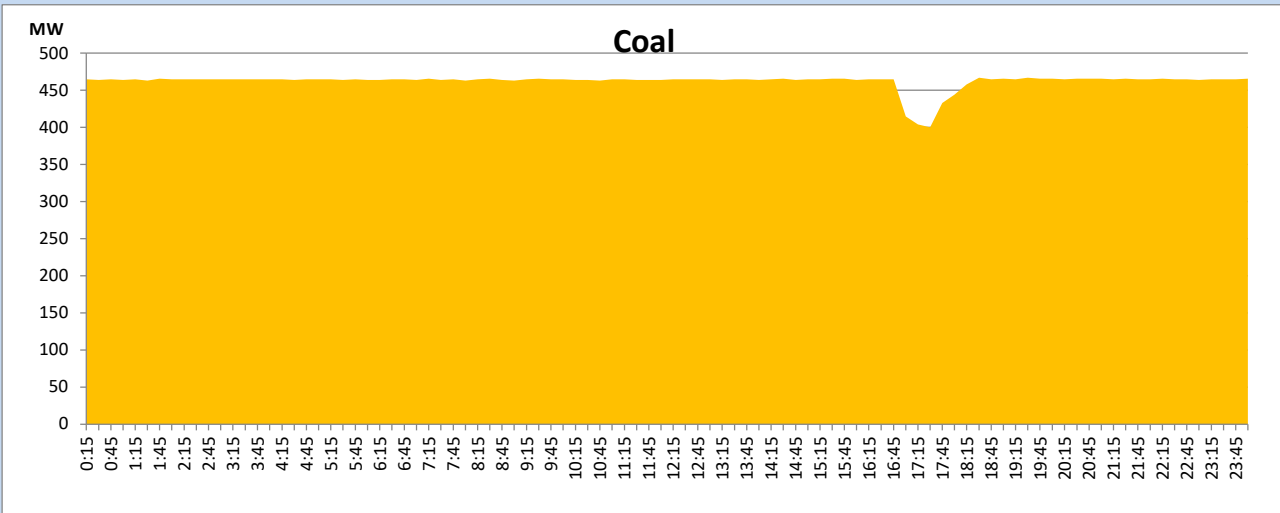
July 10, 2023



Solar and wind data is based on Telemetered Power Stations only

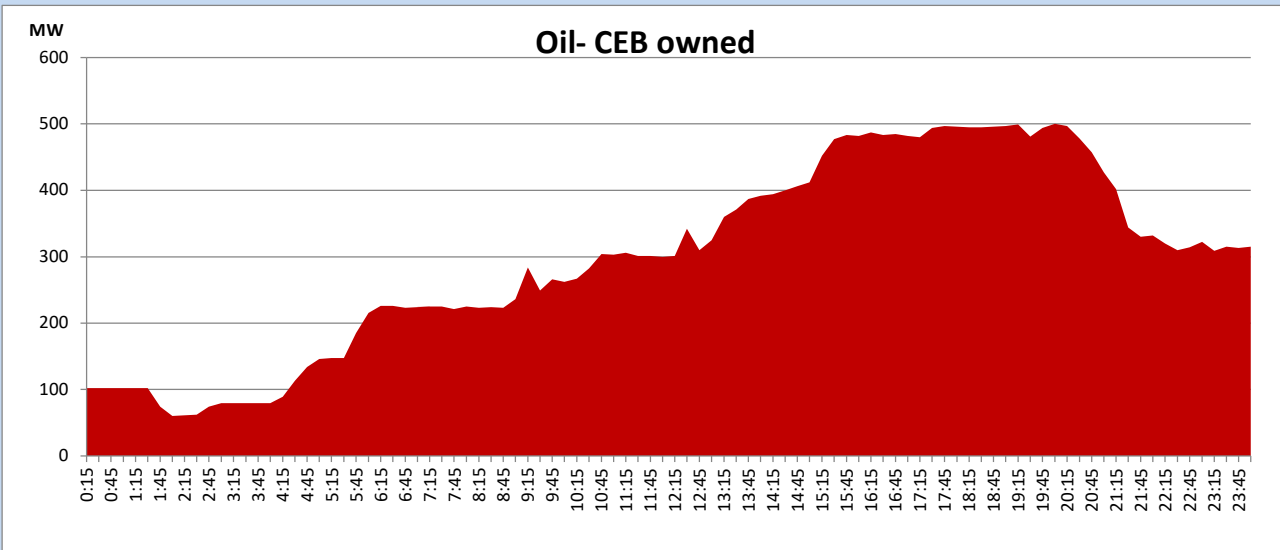
## Coal Generation during

July 10, 2023



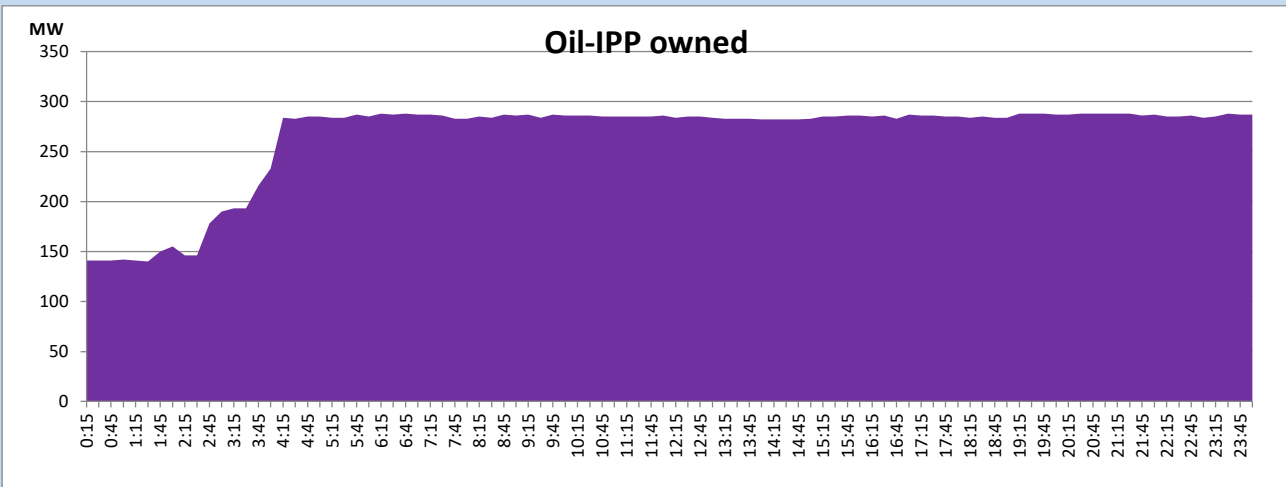
## CEB Oil Plant Generation during

July 10, 2023



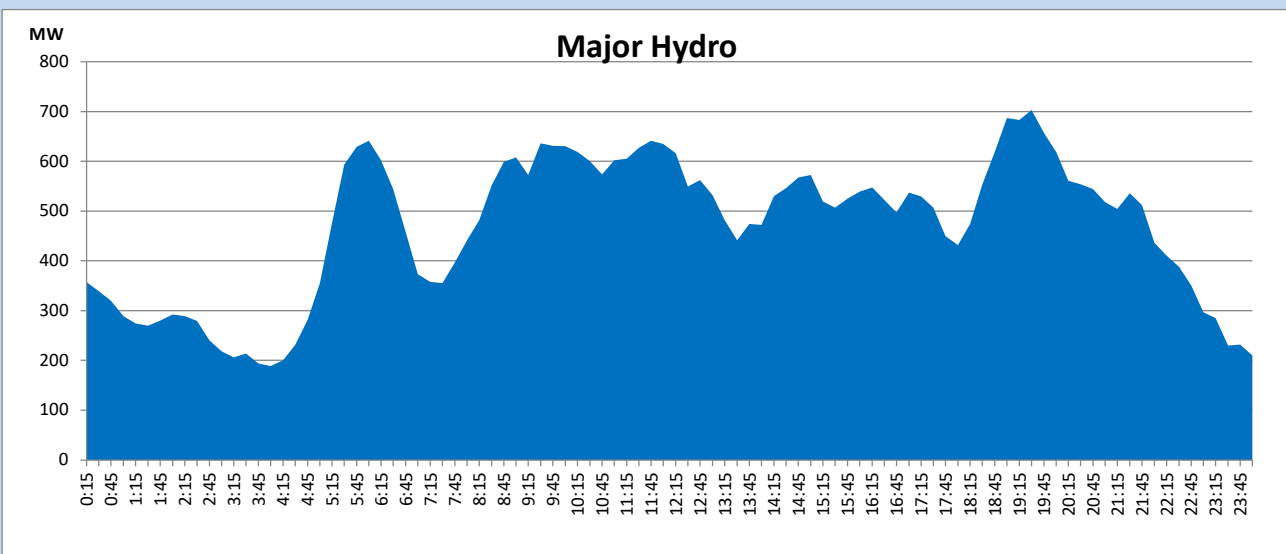
## IPP Oil Plant Generation during

July 10, 2023



## Major Hydro Generation during

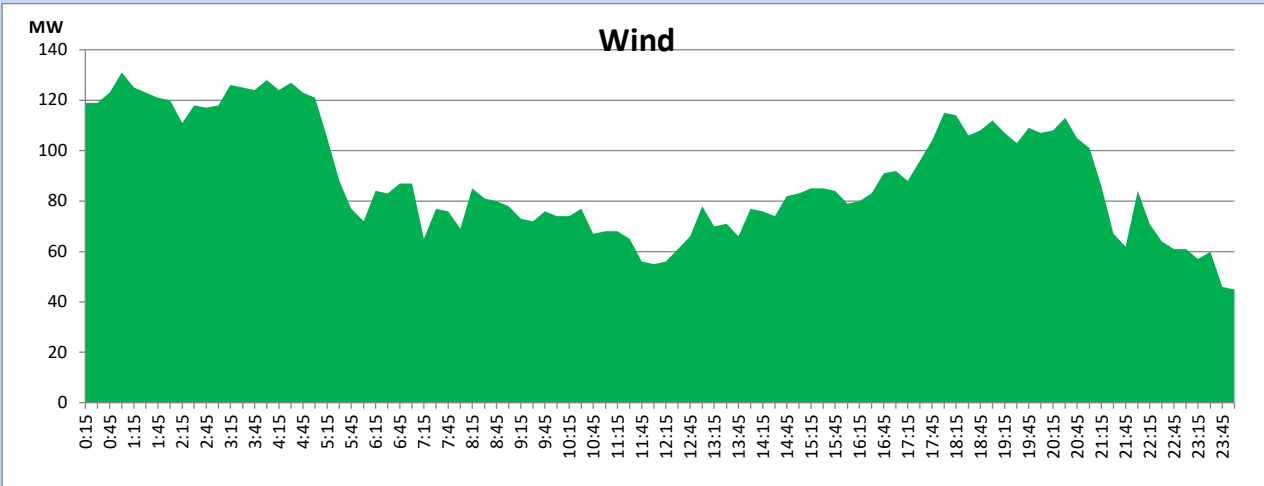
July 10, 2023



## Wind Generation during

July 10, 2023

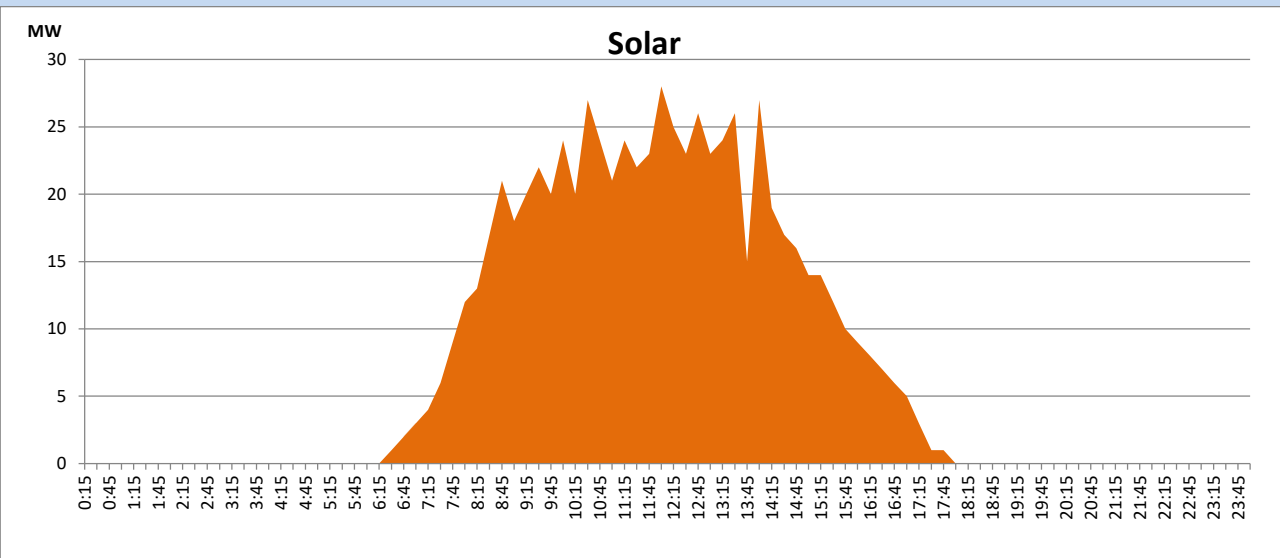
Based on Telemetered Power Stations only



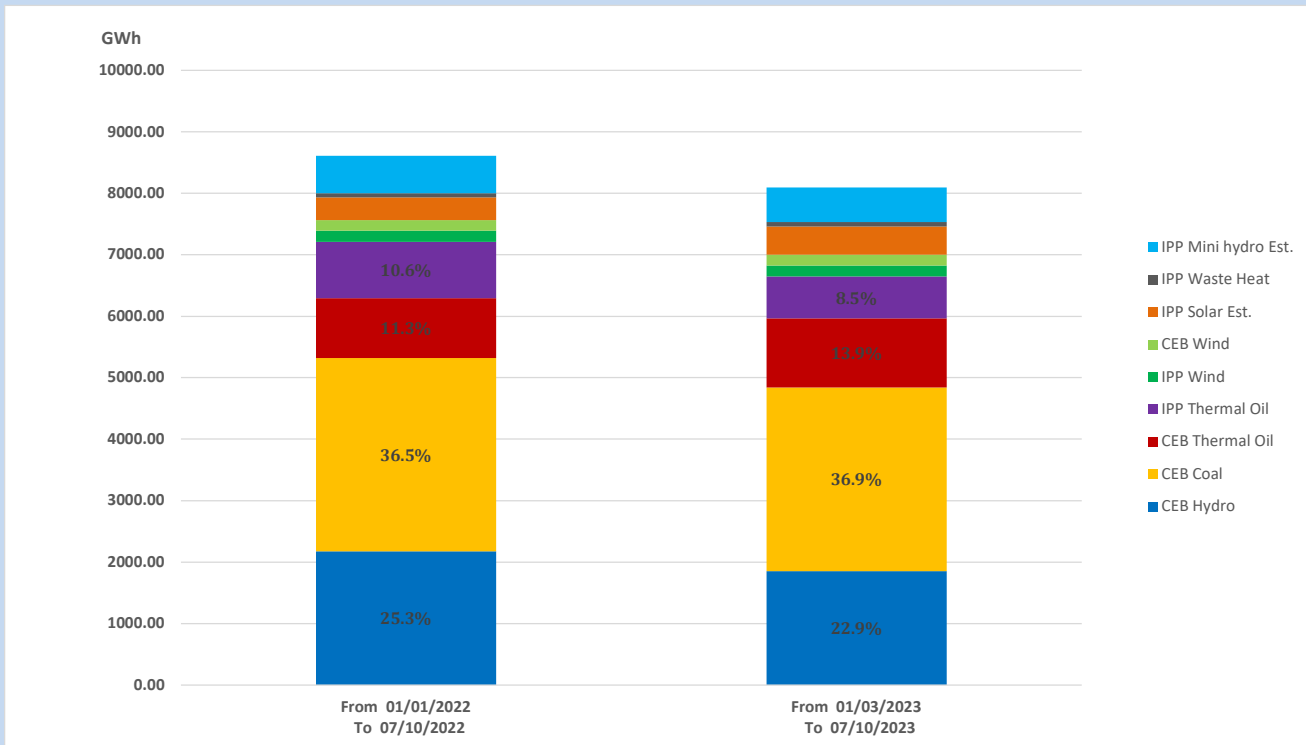
## Solar Generation during

July 10, 2023

Based on Telemetered Power Stations only



## 15. Cumulative Dispatch Comparison with Last Year



### Cumulative dispatch

From 01/01/2022 To 07/10/2022

8606 GWh

From 01/01/2023 To 07/10/2023

8092 GWh

The above figures are including contribution from roof top solar, non telemetered solar and mini hydro plants

**Thermal Plant Fuel types**

Power Station	Primary Fuel
<b>CEB Thermal</b>	
<b>Sapugaskanda 1</b>	Heavy Fuel
<b>Sapugaskanda 2</b>	Heavy Fuel
<b>Kelanitissa Small Gas Turbines</b>	Auto Diesel
<b>GT 7 - Kelanitissa</b>	Auto Diesel
<b>Kelanitissa CCY</b>	Naphtha or Diesel
<b>Lakvijaya 1</b>	Coal
<b>Lakvijaya 2</b>	Coal
<b>Lakvijaya 3</b>	Coal
<b>Uthuru Janani</b>	Heavy Fuel
<b>Barge CEB</b>	Heavy Fuel
<b>KCCPS -2</b>	Auto Diesel

Power Station	Primary Fuel
<b>Private Thermal</b>	
<b>West Coast</b>	Auto Diesel / Heavy Fuel

**Major Incidents reported during the day**

July 10, 2023

- 1) KCCP ST tripped at 9:29hrs rejecting 49MW from the system due to high vibration. At the same time Hambantota DPP 11 machines tripped rejecting 9MW from the system. KCCP ST resumed generation at 14:42hrs and reached full load at 16:01hrs. Hambantota DPP reached full load at 9:35hrs.
- 2) Sapugaskanda Gen. 01 reached full load at 15:15 hrs which was tripped at 22.16hrs on 10.07.2023.
- 3) Athurugiriya - Padukka 132kV cct tripped at 16:25hrs from Athurugiriya end due to operation of main protection causing Padukka GSS to be dead. Padukka GSS normalized at 18:32hrs via New Polpitiya – Padukka 220kV cct 1. Athurugiriya - Padukka 132kV cct normalized at 19:58hrs.
- 4) Athurugiriya – Thulhiriya – Polpitiya 132kV cct tripped and A/R from Polpitiya end at 16:23hrs due to operation of distance protection.
- 5) LVPS unit 2 de-loaded to 202MW (net) at 16:57hrs due to tripping of a coal mill feeder. LVPS Unit 02 reached full load at 18:21hrs.
- 6) Hambanthota DPP (Dakunu Janani) tripped at 17:15hrs rejecting 17MW from the system. The plant reached full load at 17:36hrs. Again, Hambanthota DPP (Dakunu Janani) tripped at 19:37hrs rejecting 17MW from the system. The plant reached full load at 19:46hrs