

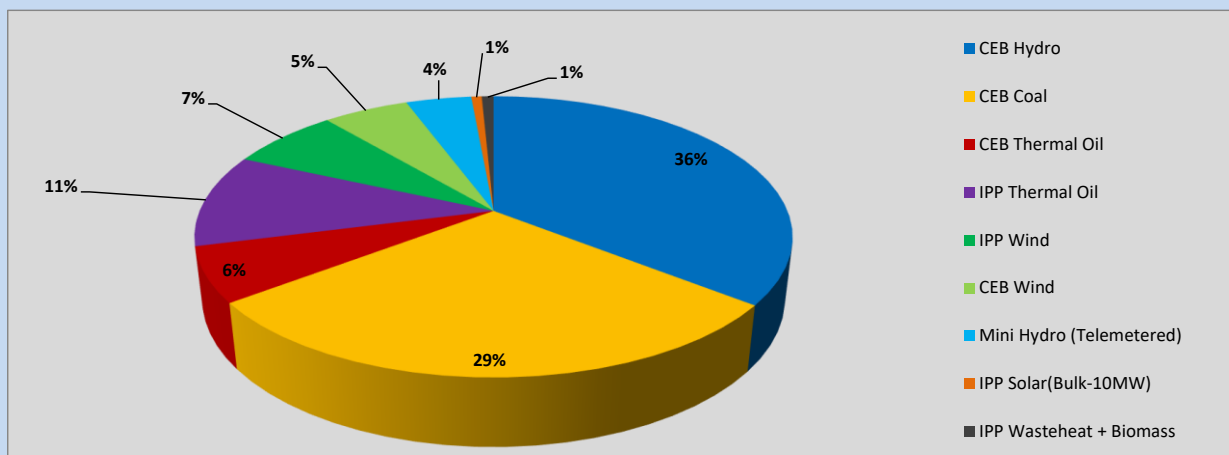
# Generation and Reservoirs Statistics

July 4, 2023



PUBLIC UTILITIES COMMISSION OF SRI LANKA

## 1. Daily Generation Mix in MWh



CEB Hydro	13,194	MWh
CEB Coal	10,798	MWh
CEB Thermal Oil	2,337	MWh
IPP Thermal Oil	3,968	MWh
IPP Wind	2,627	MWh
CEB Wind	2,054	MWh
Mini Hydro (Telemetered)	1,570	MWh
IPP Solar (Bulk)	251	MWh
IPP Wasteheat + Biomass	284	MWh

**Total Generation (Excluding estimated figures) 37,083 MWh**

### Estimated figures of CEB generation report

Estimated unserved energy = 0.00 GWh

Estimated Mini Hydro (Non telemetered) = 1940 MWh

Estimated IPP Solar PV (Bulk 1-10MW) = 304 MWh

Estimated Solar Roof Top PV = 1650 MWh

## 2. Cumulative Dispatch

Following data excludes the contribution from roof top solar, non telemetered solar and mini hydro plants

### For Current Month

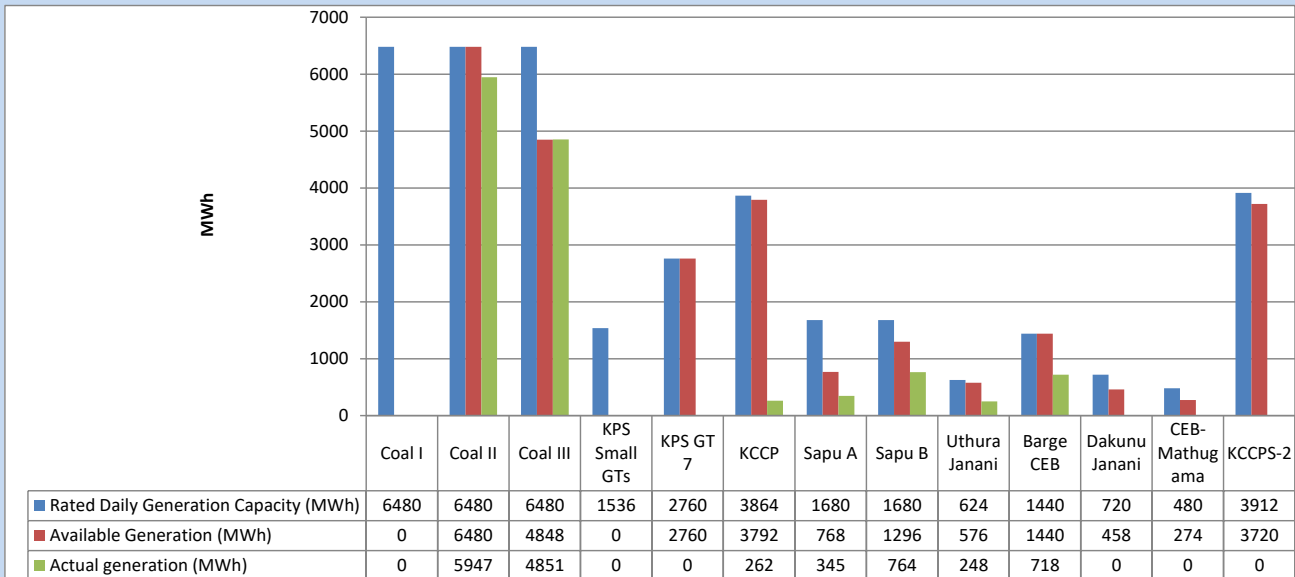
Category	Dispatch (GWh)	
CEB Hydro	42	30.78%
CEB Coal	43	31.33%
CEB Thermal Oil	18	12.98%
IPP Thermal	11	7.71%
SPP Wind	8	5.66%
CEB Wind	7	4.85%
Mini Hydro (Telemetered)	7	4.89%
IPP Solar(Bulk-10MW)	1	0.74%
IPP Wasteheat + BMP	1	1.05%
<b>Total</b>	<b>138</b>	

### For Current Year

Category	Dispatch (GWh)	
CEB Hydro	1,780	25.11%
CEB Coal	2,926	41.27%
CEB Thermal Oil	1,101	15.53%
IPP Thermal	665	9.37%
SPP Wind	159	2.24%
CEB Wind	171	2.41%
Mini Hydro (Telemetered)	173	2.43%
IPP Solar(Bulk-10MW)	54	0.76%
IPP Wasteheat	61	0.87%
<b>Total</b>	<b>7,090</b>	

### 3. CEB owned Thermal Plant Dispatch

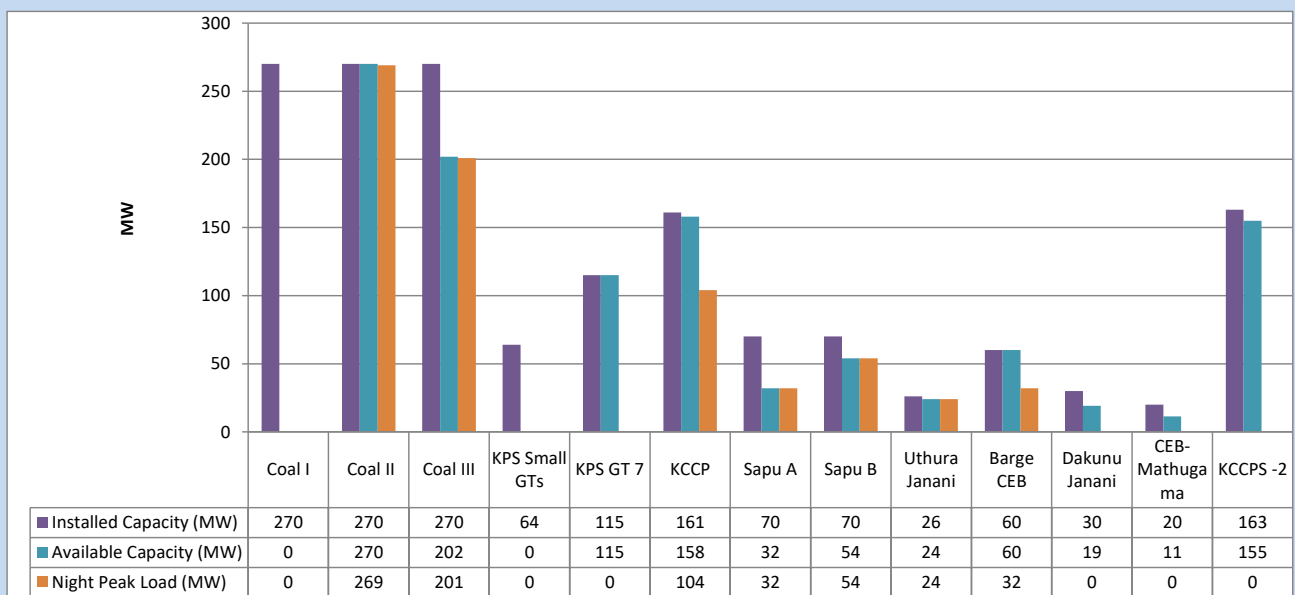
July 4, 2023



Available Generation is estimated based on plant availability at 6.00am on

July 5, 2023

### 4. CEB owned Thermal Plant Loading at the Night Peak

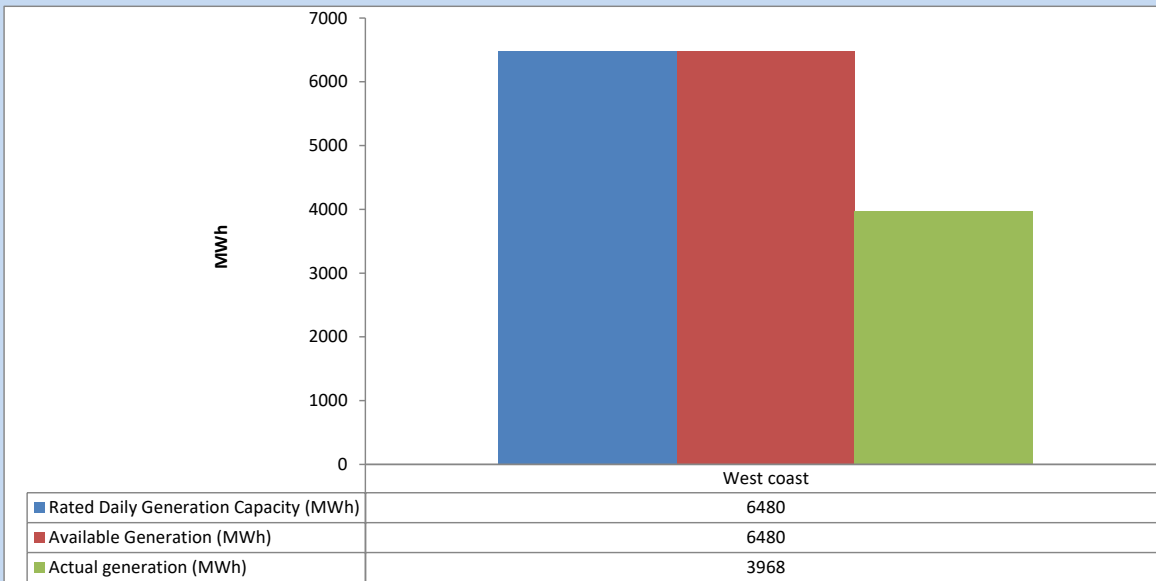


Plant availability is recorded at 6.00 am on

July 5, 2023

## 5. IPP owned Thermal Plant Dispatch

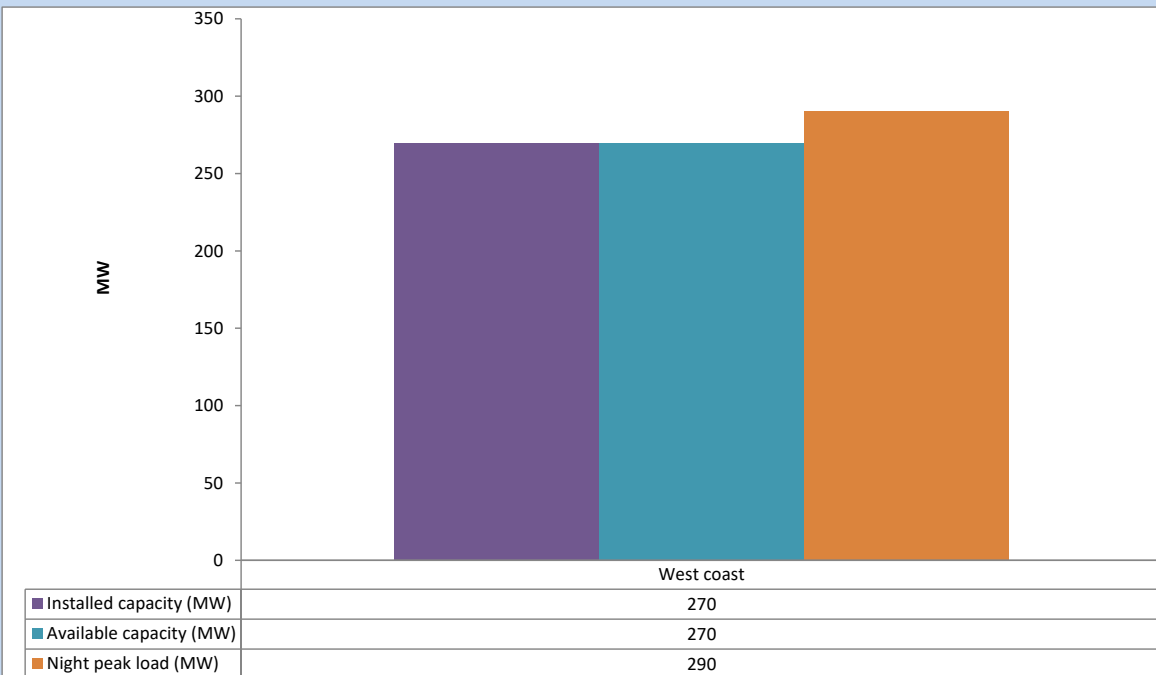
July 4, 2023



Available Generation is estimated based on plant availability at 6.00am on

July 5, 2023

## 6. IPP owned Thermal Plant Loading at the Night Peak

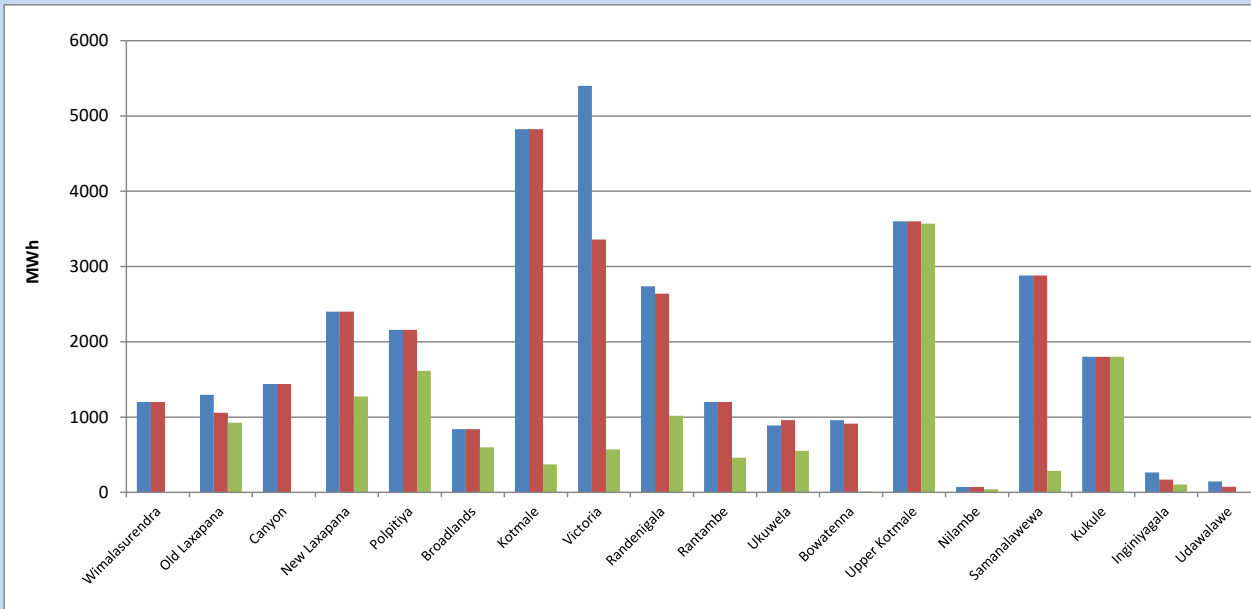


Plant availability is recorded at 6.00 am on

July 5, 2023

## 7. Major Hydro Plant Dispatch

July 4, 2023

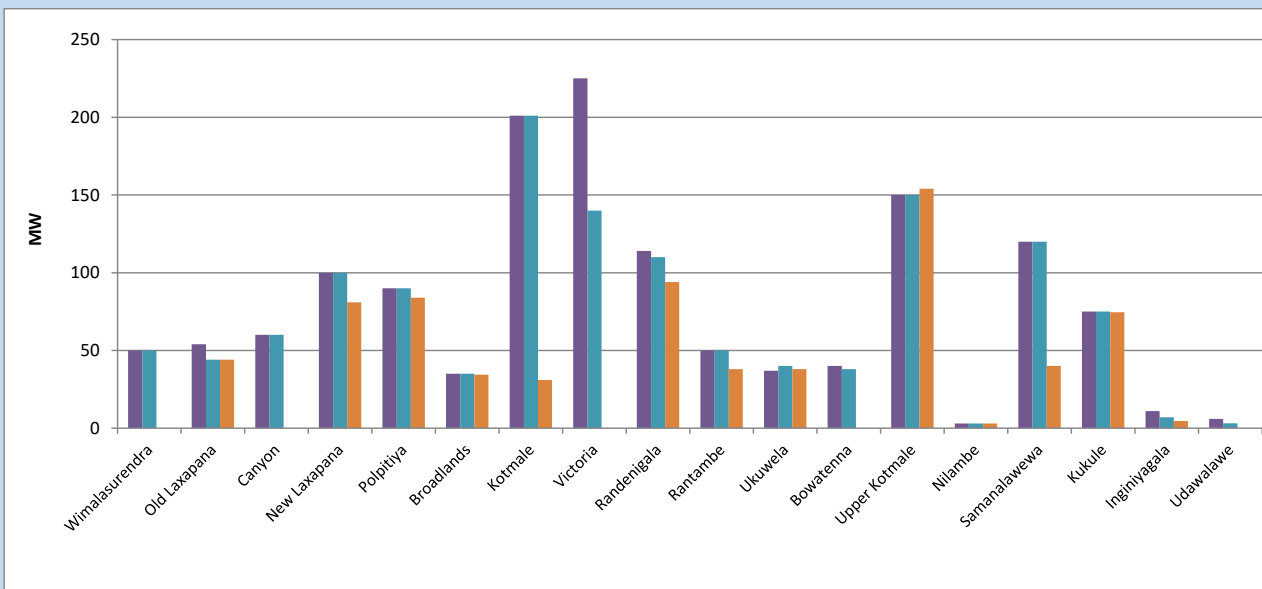


Available Generation is estimated based on plant availability at 6.00am on  
Broadlands power plant is operating in the Commissioning Stage

July 5, 2023

## 8. Major Hydro Plant Loading at Night Peak

July 4, 2023



Plant availability is recorded at 6.00 am on  
Broadlands power plant is operating in the Commissioning Stage

July 5, 2023

## 9. Summary of Major Plant performance

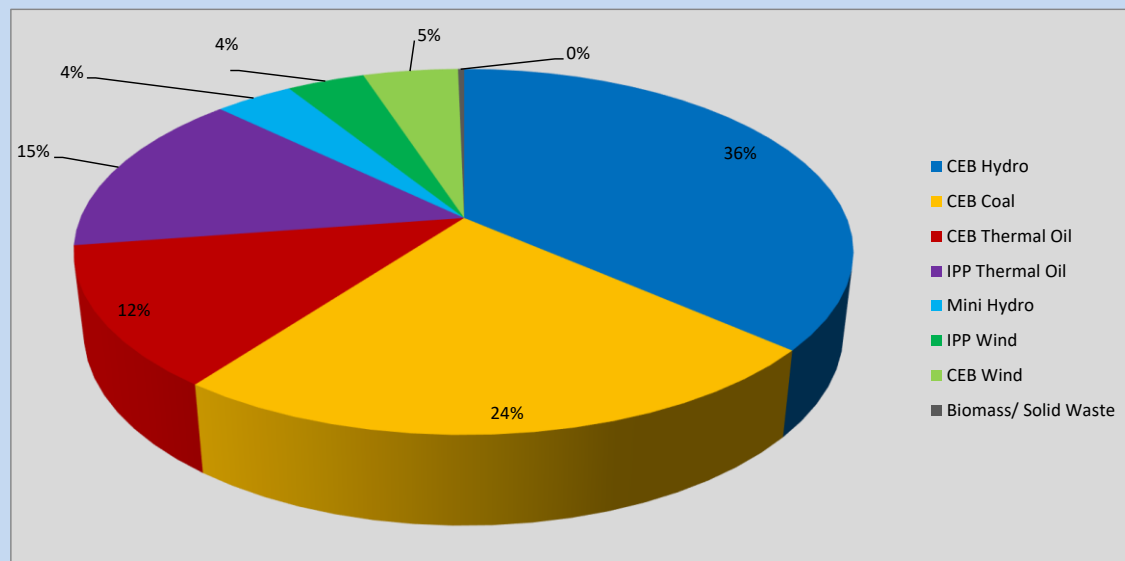
Plant	Installed Capacity	Plant Availability	Night peak Load	Plant Dispatch
	(MW)	(MW)	(MW)	(MWh)
Wimalasurendra	50	50	0	0
Old Laxapana	54	44	44	925
Canyon	60	60	0	0
New Laxapana	100	100	81	1,275
Polpitiya	90	90	84	1,615
Broadlands	35	35	34	597
Kotmale	201	201	31	370
Victoria	225	140	0	570
Randenigala	114	110	94	1,017
Rantambe	50	50	38	461
Ukuwela	37	40	38	552
Bowatenna	40	38	0	10
Upper Kotmale	150	150	154	3,570
Nilambe	3	3	3	42
Samanalawewa	120	120	40	286
Kukule	75	75	75	1,800
Inginiyagala	11	7	5	104
Udawalawe	6	3	0	0
Puttalam Coal I	270	0	0	0
Puttalam Coal II	270	270	269	5,947
Puttalam Coal III	270	202	201	4,851
KPS Small GTs	64	0	0	0
KPS GT 7	115	115	0	0
KCCP	161	158	104	262
Sapugaskanda A	70	32	32	345
Sapugaskanda B	70	54	54	764
Uthura Janani	26	24	24	248
Barge CEB	60	60	32	718
CEB-Hambantota	30	19	0	0
CEB-Mathugama	20	11	0	0
ACE Matara	24	0	0	0
Asia Power	50	0	0	0
KCCPS -2	163	155	0	0
West Coast	270	270	290	3,968
Nothern Power	36	0	0	0
ACE Embilipitiya	93	0	0	0
<b>Total</b>	<b>3,483</b>	<b>2,687</b>	<b>1,979</b>	<b>37,083</b>

Plant availability is the availability recorded at 6 am on

July 5, 2023

### 10. Contribution to the Night Peak in MW

July 4, 2023



CEB Hydro	722 MW
CEB Coal	470 MW
CEB Thermal Oil	246 MW
IPP Thermal Oil	290 MW
Mini Hydro (Telemetered)	77 MW
IPP Wind	76.4 MW
CEB Wind	93.2 MW
Biomass/ Solid Waste	6 MW

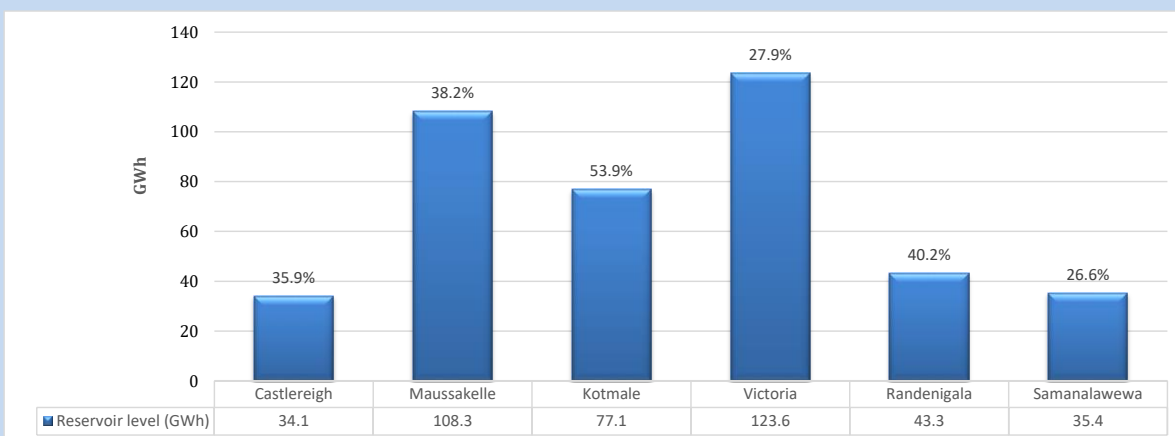
#### Recorded Peak Demand Data

Night Peak*	1,980 MW
Day Peak Maximum Demand	1,763 MW
Day Peak Minimum Demand	1,554 MW
Off Peak Minimum Demand	979 MW

Above figures are excluding contribution from roof top solar, non telemetered solar and mini hydro plants

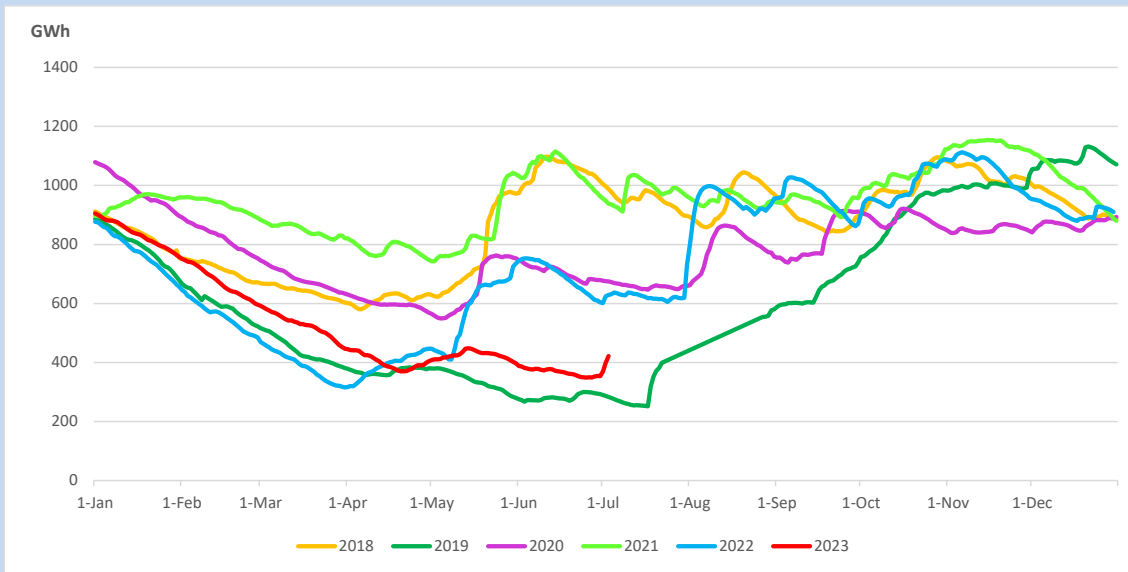
#### Reservoir Levels -

as at 06.00 Hr on July 5, 2023

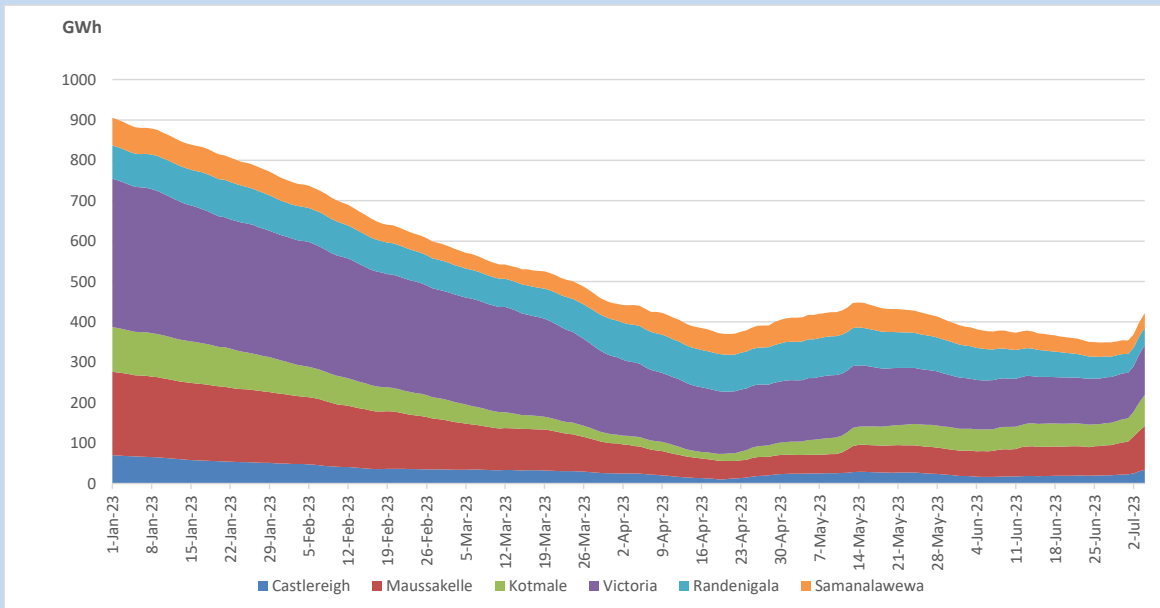


Total Reservoir Level	421.8 GWh
% of Total capacity	35.0%

## 11. Comparison of Total Reservoir Storage Levels with Past Years

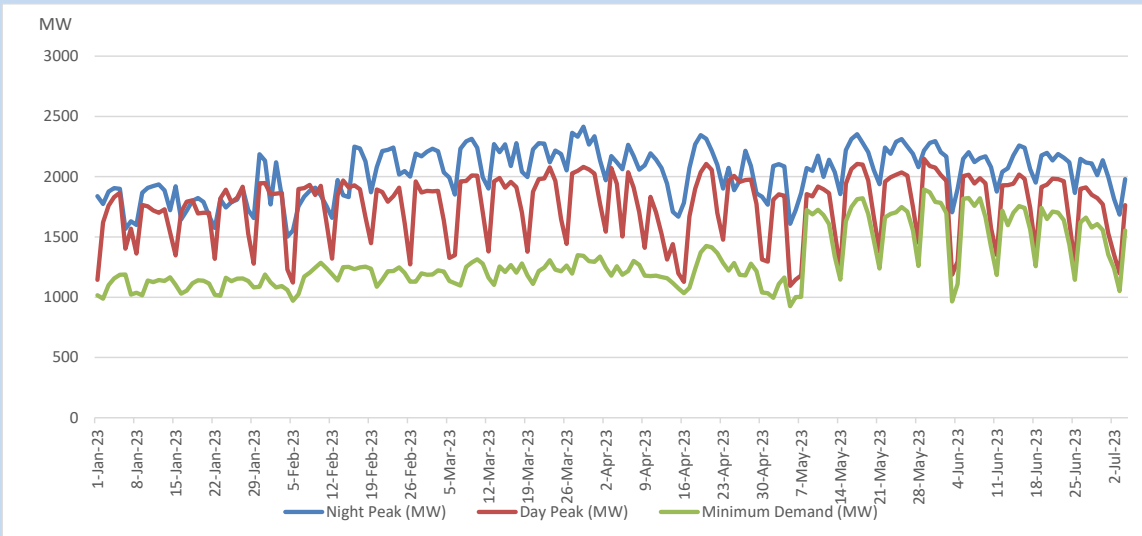


## 12. Variation of Major Hydro Reservoir Levels in the current year (GWh)





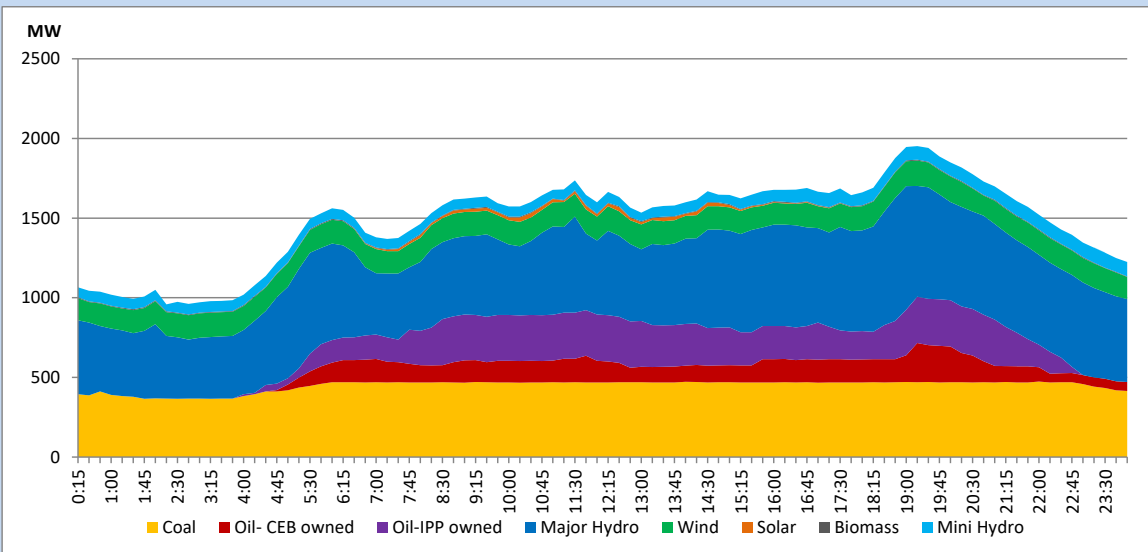
### 13. Variation of Demand during the current year



The above figures are excluding contribution from roof top solar, non telemetered solar and mini hydro plants

### 14. Daily Load Curve

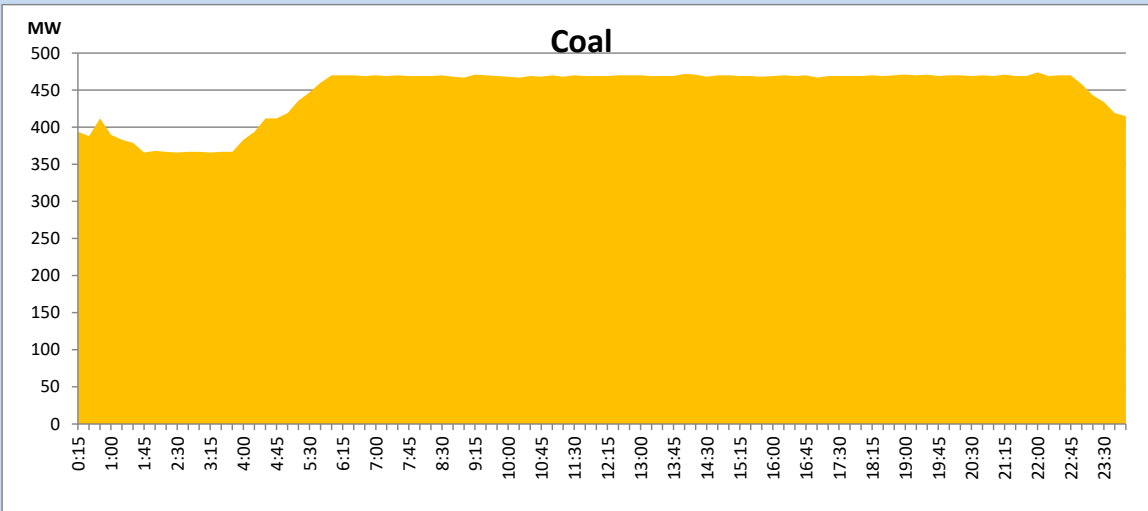
July 4, 2023



Solar and wind data is based on Telemetered Power Stations only

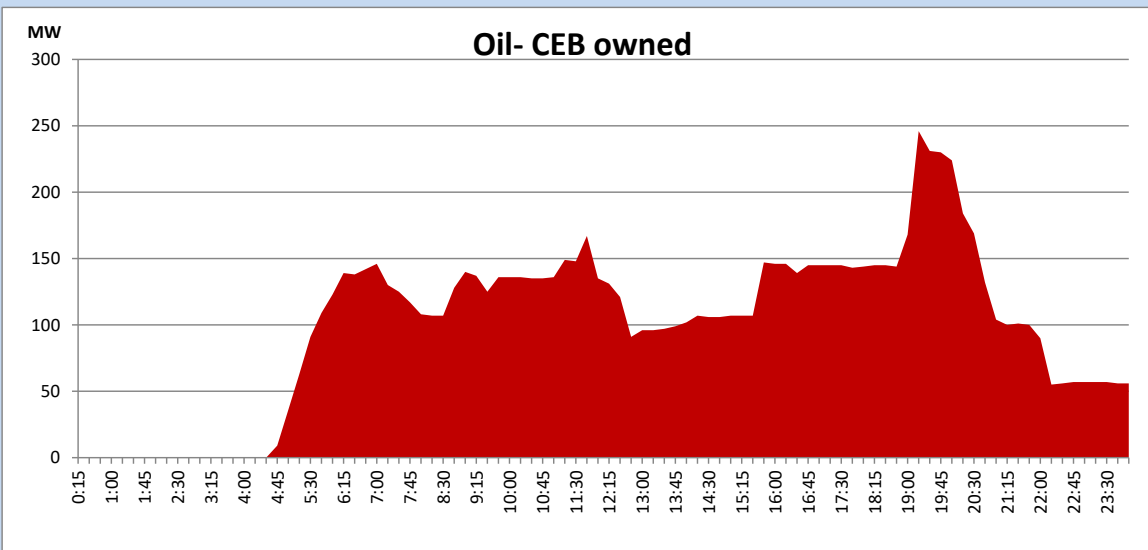
## Coal Generation during

July 4, 2023



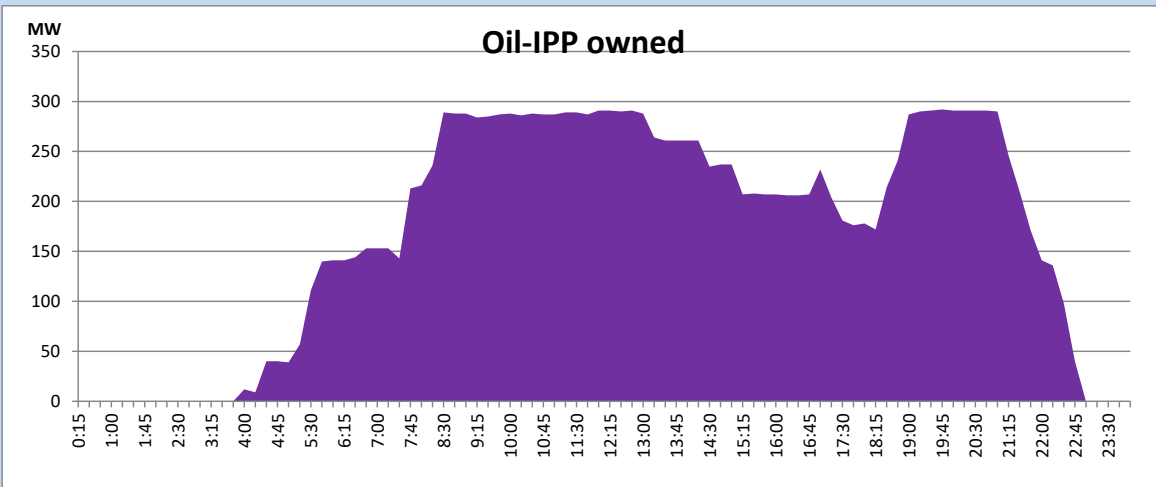
## CEB Oil Plant Generation during

July 4, 2023



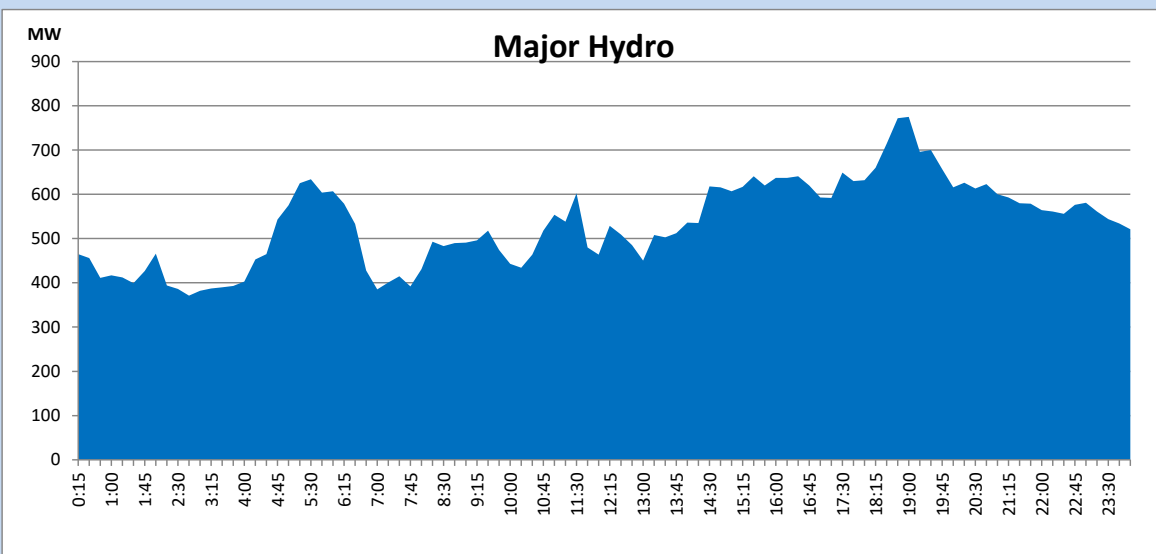
IPP Oil Plant Generation during

July 4, 2023



Major Hydro Generation during

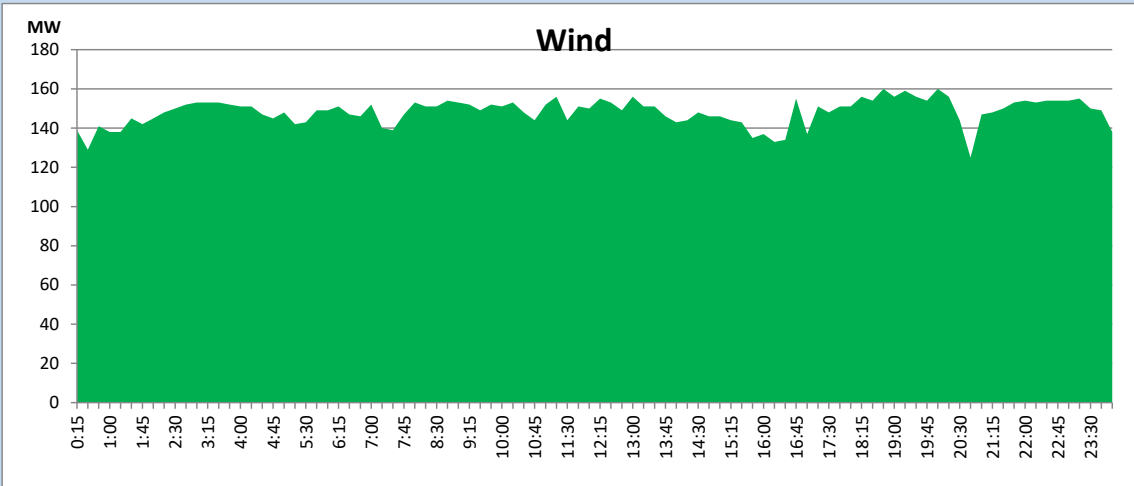
July 4, 2023



## Wind Generation during

July 4, 2023

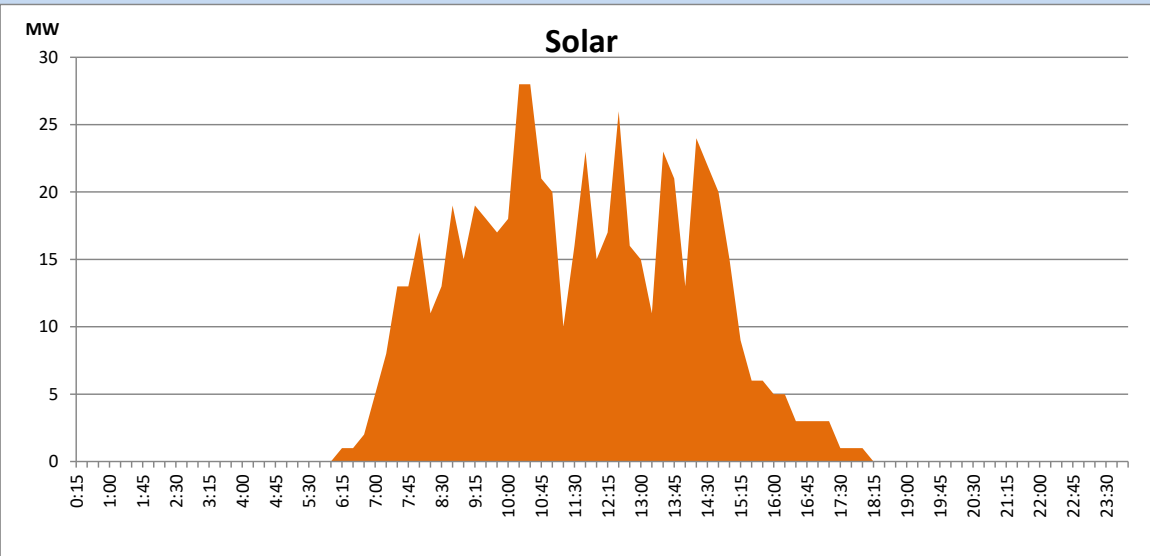
Based on Telemetered Power Stations only



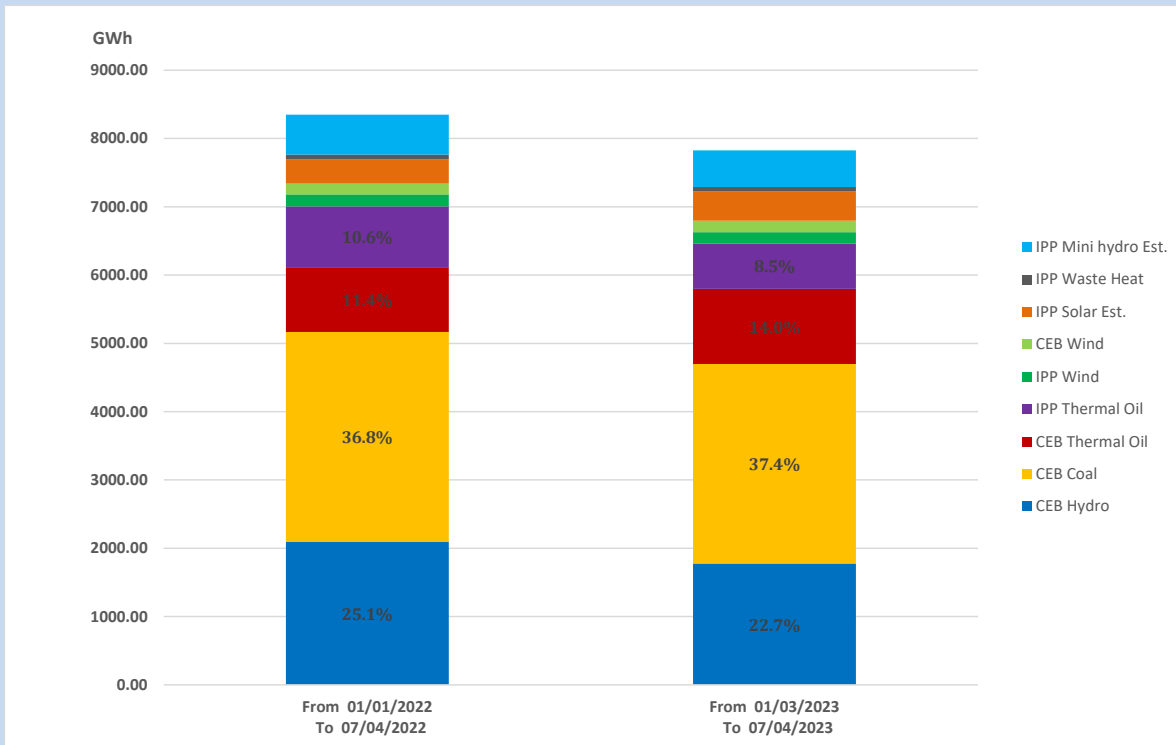
## Solar Generation during

July 4, 2023

Based on Telemetered Power Stations only



## 15. Cumulative Dispatch Comparison with Last Year



### Cumulative dispatch

From 01/01/2022 To 07/04/2022

8347.88 GWh

From 01/01/2023 To 07/04/2023

7832.00 GWh

The above figures are including contribution from roof top solar, non telemetered solar and mini hydro plants

**Thermal Plant Fuel types**

<b>Power Station</b>	<b>Primary Fuel</b>
<b>CEB Thermal</b>	
<b>Sapugaskanda 1</b>	Heavy Fuel
<b>Sapugaskanda 2</b>	Heavy Fuel
<b>Kelanitissa Small Gas Turbines</b>	Auto Diesel
<b>GT 7 - Kelanitissa</b>	Auto Diesel
<b>Kelanitissa CCY</b>	Naphtha or Diesel
<b>Lakvijaya 1</b>	Coal
<b>Lakvijaya 2</b>	Coal
<b>Lakvijaya 3</b>	Coal
<b>Uthuru Janani</b>	Heavy Fuel
<b>Barge CEB</b>	Heavy Fuel
<b>KCCPS -2</b>	Auto Diesel

<b>Power Station</b>	<b>Primary Fuel</b>
<b>Private Thermal</b>	
<b>West Coast</b>	Auto Diesel / Heavy Fuel

**Major Incidents reported during the day**

July 4, 2023

- 1) Laxapana and Norton pond spilling started at 14:00hrs & 15:25hrs and spilling stopped at 18:38hrs & 19:45hrs respectively