

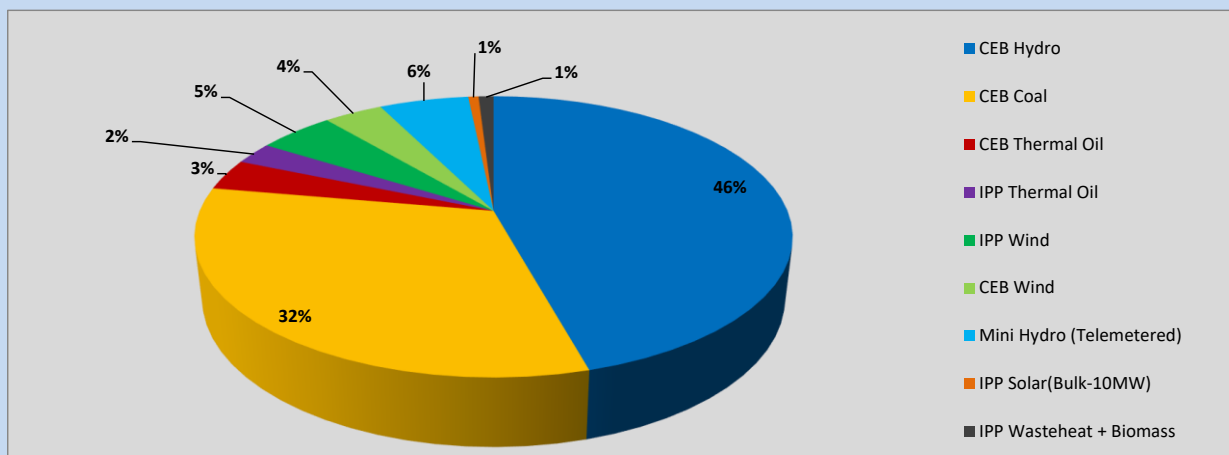
Generation and Reservoirs Statistics

July 3, 2023



PUBLIC UTILITIES COMMISSION OF SRI LANKA

1. Daily Generation Mix in MWh



CEB Hydro	14,069	MWh
CEB Coal	9,867	MWh
CEB Thermal Oil	1,102	MWh
IPP Thermal Oil	785	MWh
IPP Wind	1,511	MWh
CEB Wind	1,172	MWh
Mini Hydro (Telemetered)	1,779	MWh
IPP Solar (Bulk)	205	MWh
IPP Wasteheat + Biomass	299	MWh

Total Generation (Excluding estimated figures) 30,789 MWh

Estimated figures of CEB generation report

Estimated unserved energy = 0.00 GWh

Estimated Mini Hydro (Non telemetered) = 1731 MWh

Estimated IPP Solar PV (Bulk 1-10MW) = 304 MWh

Estimated Solar Roof Top PV = 1650 MWh

2. Cumulative Dispatch

Following data excludes the contribution from roof top solar, non telemetered solar and mini hydro plants

For Current Month

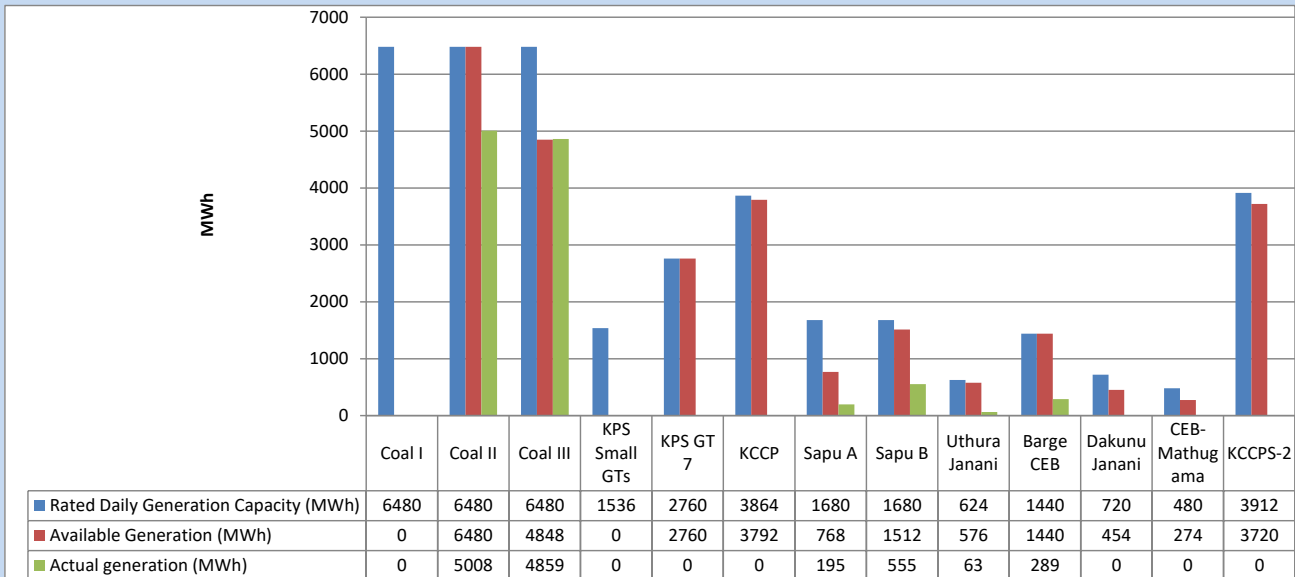
Category	Dispatch (GWh)	
CEB Hydro	29	29.02%
CEB Coal	32	32.14%
CEB Thermal Oil	16	15.44%
IPP Thermal	7	6.61%
SPP Wind	5	5.13%
CEB Wind	5	4.60%
Mini Hydro (Telemetered)	5	5.14%
IPP Solar(Bulk-10MW)	1	0.77%
IPP Wasteheat + BMP	1	1.15%
Total	101	

For Current Year

Category	Dispatch (GWh)	
CEB Hydro	1,767	25.05%
CEB Coal	2,915	41.33%
CEB Thermal Oil	1,099	15.58%
IPP Thermal	661	9.37%
SPP Wind	156	2.22%
CEB Wind	169	2.39%
Mini Hydro (Telemetered)	171	2.43%
IPP Solar(Bulk-10MW)	54	0.76%
IPP Wasteheat	61	0.87%
Total	7,053	

3. CEB owned Thermal Plant Dispatch

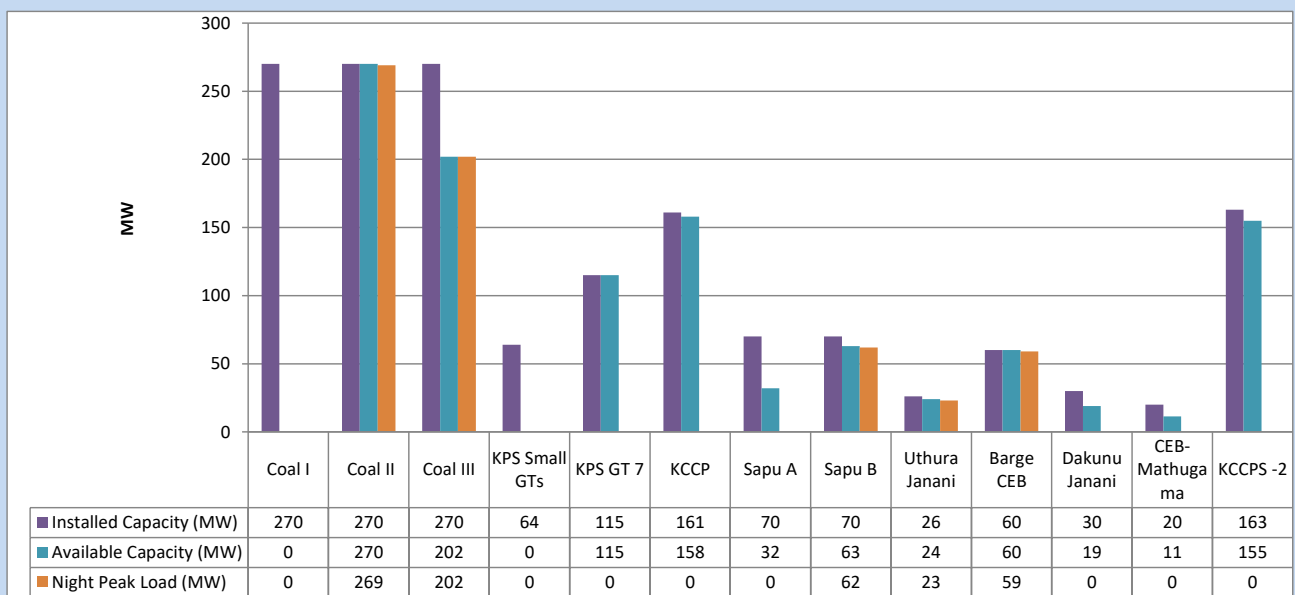
July 3, 2023



Available Generation is estimated based on plant availability at 6.00am on

July 4, 2023

4. CEB owned Thermal Plant Loading at the Night Peak

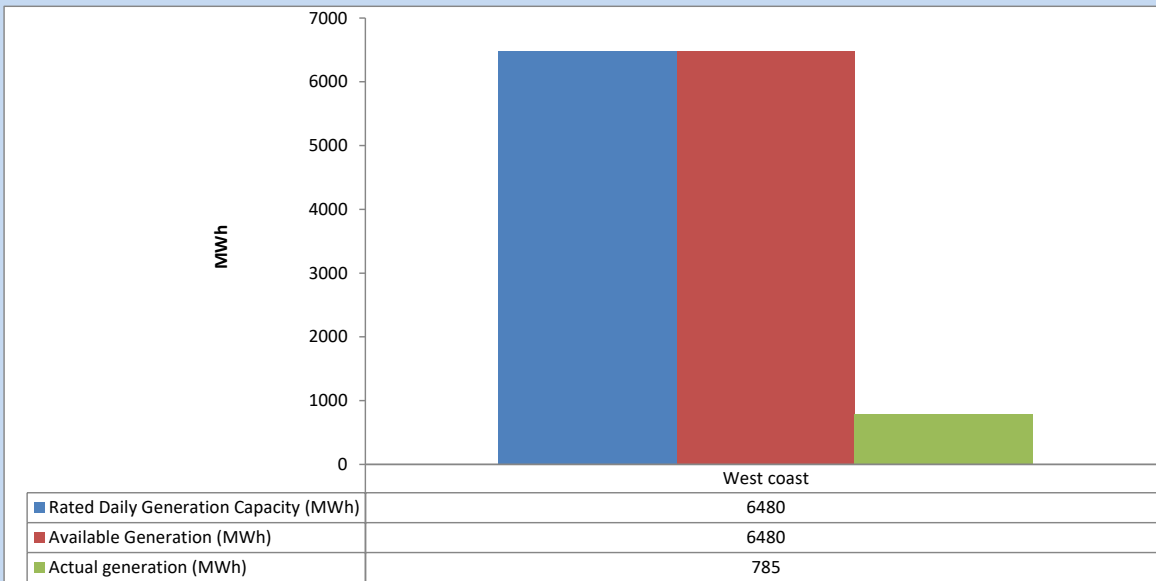


Plant availability is recorded at 6.00 am on

July 4, 2023

5. IPP owned Thermal Plant Dispatch

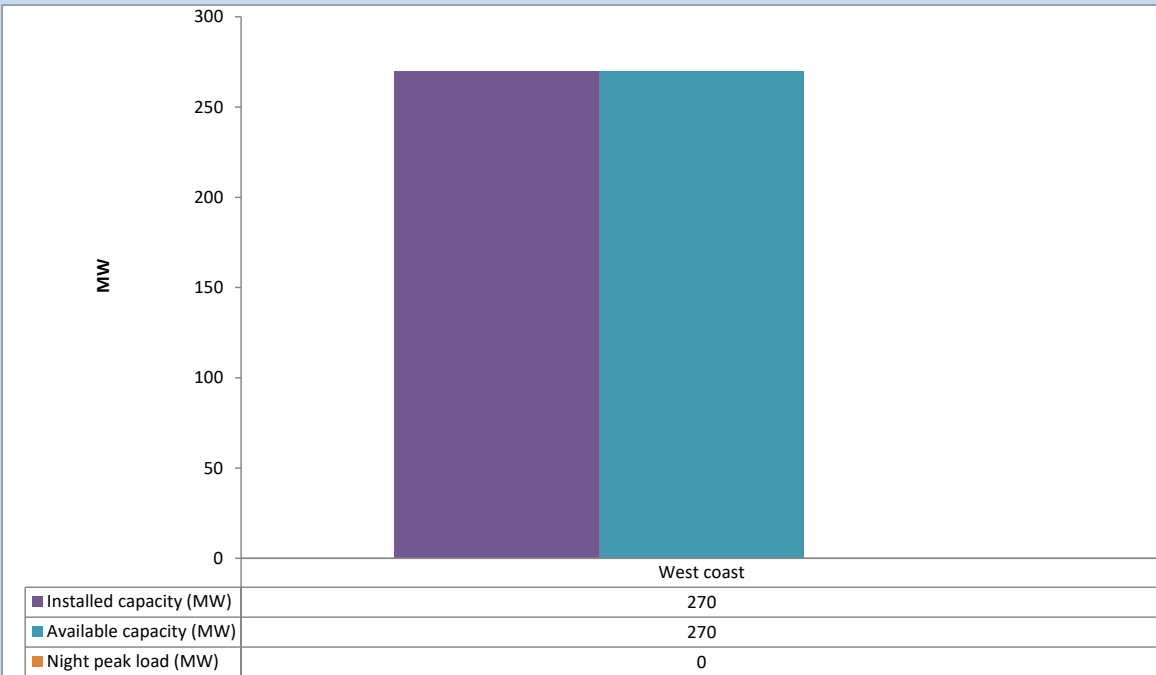
July 3, 2023



Available Generation is estimated based on plant availability at 6.00am on

July 4, 2023

6. IPP owned Thermal Plant Loading at the Night Peak

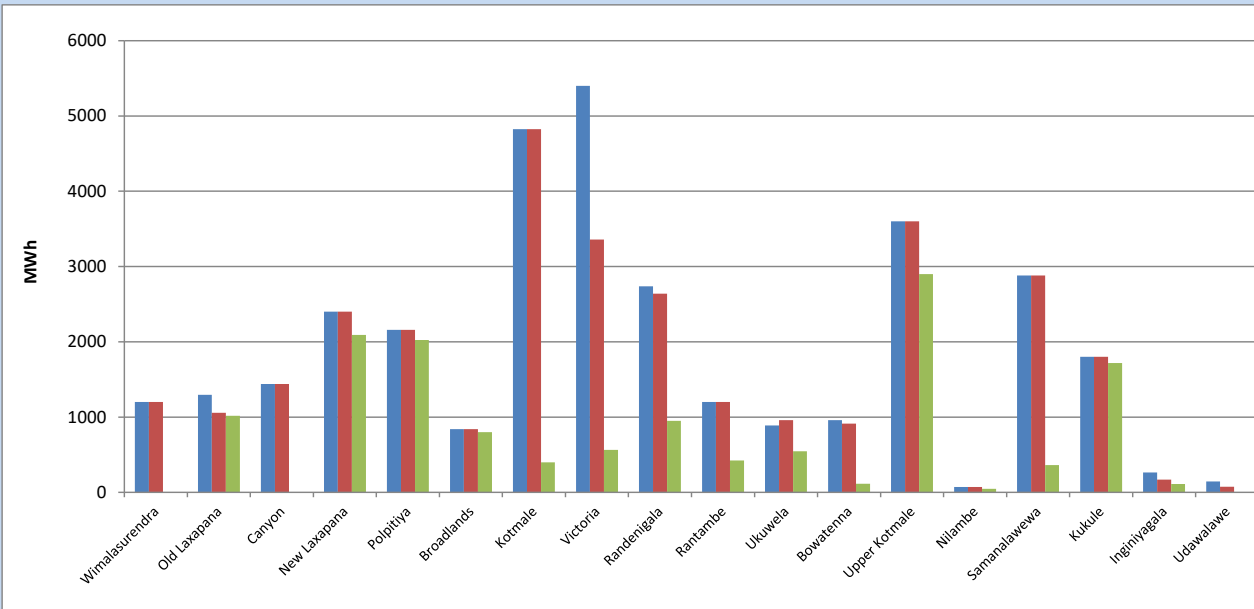


Plant availability is recorded at 6.00 am on

July 4, 2023

7. Major Hydro Plant Dispatch

July 3, 2023

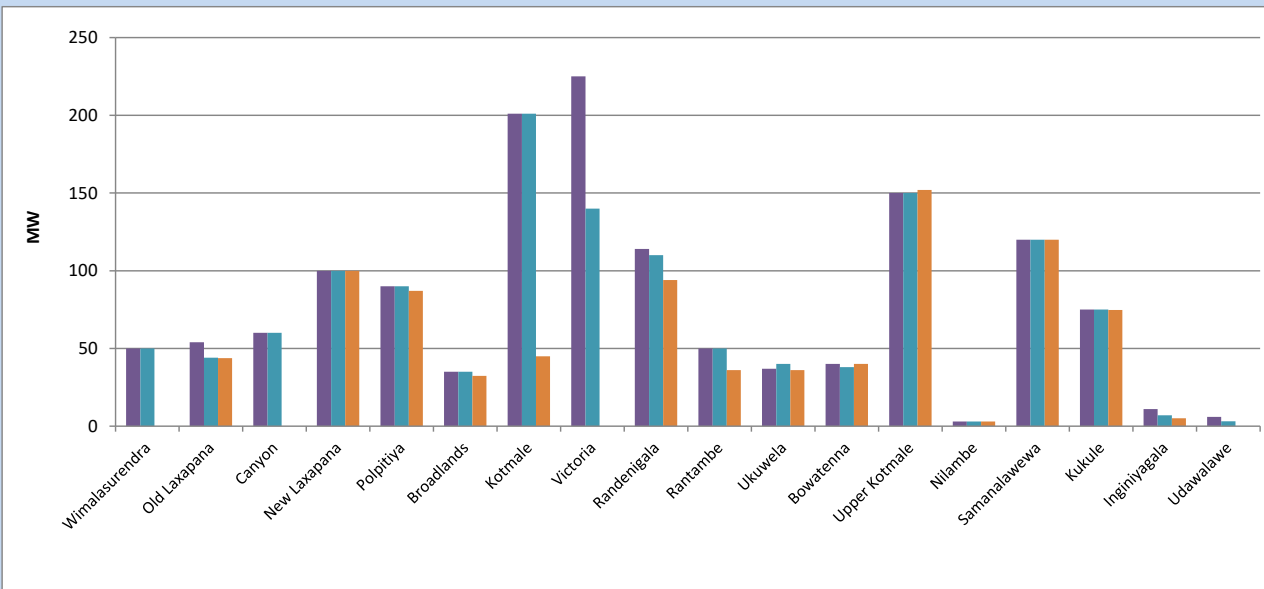


Available Generation is estimated based on plant availability at 6.00am on
Broadlands power plant is operating in the Commissioning Stage

July 4, 2023

8. Major Hydro Plant Loading at Night Peak

July 3, 2023



Plant availability is recorded at 6.00 am on
Broadlands power plant is operating in the Commissioning Stage

July 4, 2023

9. Summary of Major Plant performance

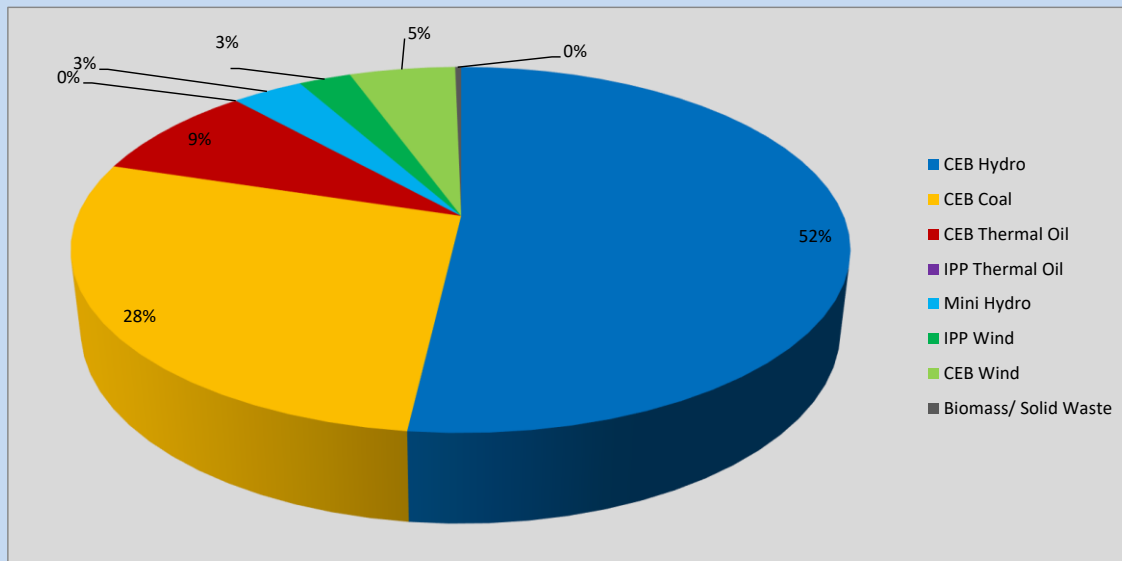
Plant	Installed Capacity	Plant Availability	Night peak Load	Plant Dispatch
	(MW)	(MW)	(MW)	(MWh)
Wimalasurendra	50	50	0	0
Old Laxapana	54	44	44	1,018
Canyon	60	60	0	0
New Laxapana	100	100	100	2,090
Polpitiya	90	90	87	2,025
Broadlands	35	35	32	799
Kotmale	201	201	45	400
Victoria	225	140	0	565
Randenigala	114	110	94	949
Rantambe	50	50	36	423
Ukuwela	37	40	36	546
Bowatenna	40	38	40	114
Upper Kotmale	150	150	152	2,900
Nilambe	3	3	3	48
Samanalawewa	120	120	120	362
Kukule	75	75	75	1,719
Inginiyagala	11	7	5	111
Udawalawe	6	3	0	0
Puttalam Coal I	270	0	0	0
Puttalam Coal II	270	270	269	5,008
Puttalam Coal III	270	202	202	4,859
KPS Small GTs	64	0	0	0
KPS GT 7	115	115	0	0
KCCP	161	158	0	0
Sapugaskanda A	70	32	0	195
Sapugaskanda B	70	63	62	555
Uthura Janani	26	24	23	63
Barge CEB	60	60	59	289
CEB-Hambantota	30	19	0	0
CEB-Mathugama	20	11	0	0
ACE Matara	24	0	0	0
Asia Power	50	0	0	0
KCCPS -2	163	155	0	0
West Coast	270	270	0	785
Nothern Power	36	0	0	0
ACE Embilipitiya	93	0	0	0
Total	3,483	2,695	1,681	30,789

Plant availability is the availability recorded at 6 am on

July 4, 2023

10. Contribution to the Night Peak in MW

July 3, 2023



CEB Hydro	873 MW
CEB Coal	471 MW
CEB Thermal Oil	144 MW
IPP Thermal Oil	0 MW
Mini Hydro (Telemetered)	60 MW
IPP Wind	43.6 MW
CEB Wind	88.3 MW
Biomass/ Solid Waste	5 MW

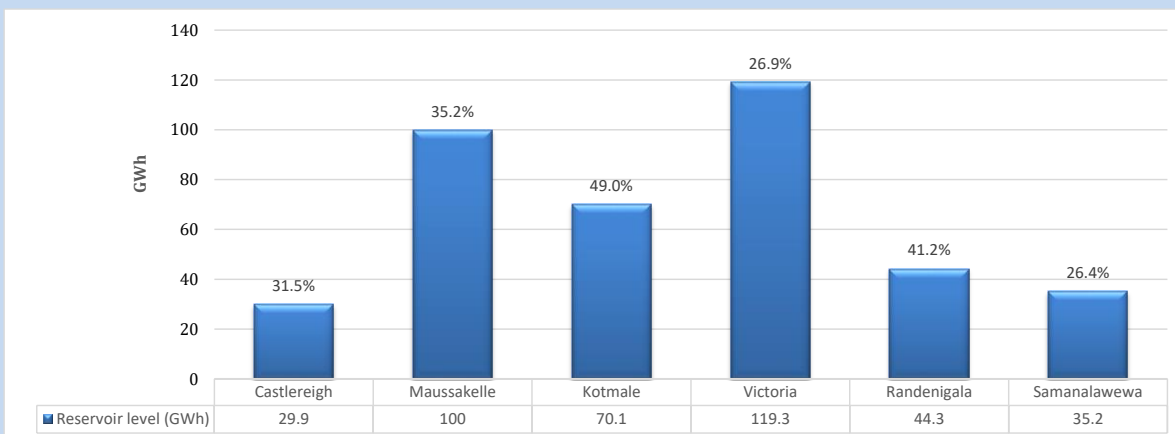
Recorded Peak Demand Data

Night Peak*	1,685 MW
Day Peak Maximum Demand	1,198 MW
Day Peak Minimum Demand	1,050 MW
Off Peak Minimum Demand	1,088 MW

Above figures are excluding contribution from roof top solar, non telemetered solar and mini hydro plants

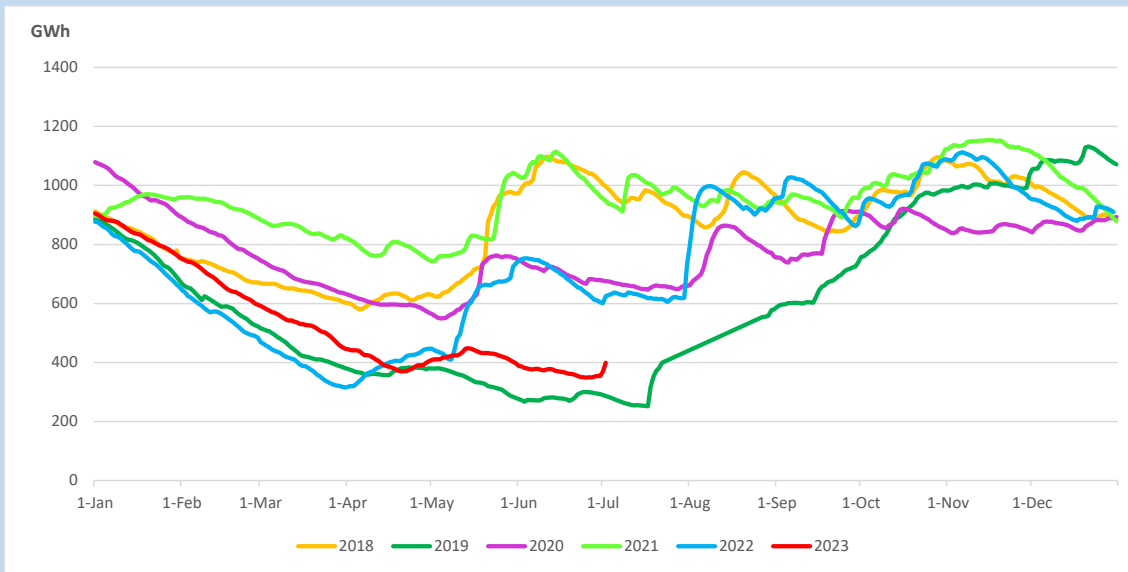
Reservoir Levels -

as at 06.00 Hr on July 4, 2023

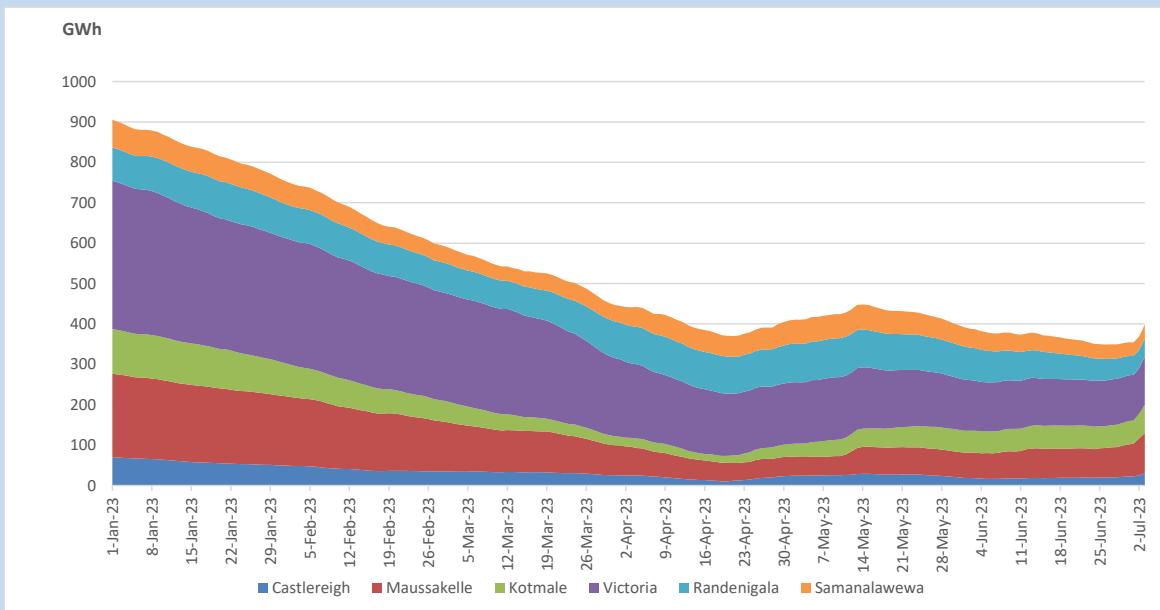


Total Reservoir Level	398.8 GWh
% of Total capacity	33.1%

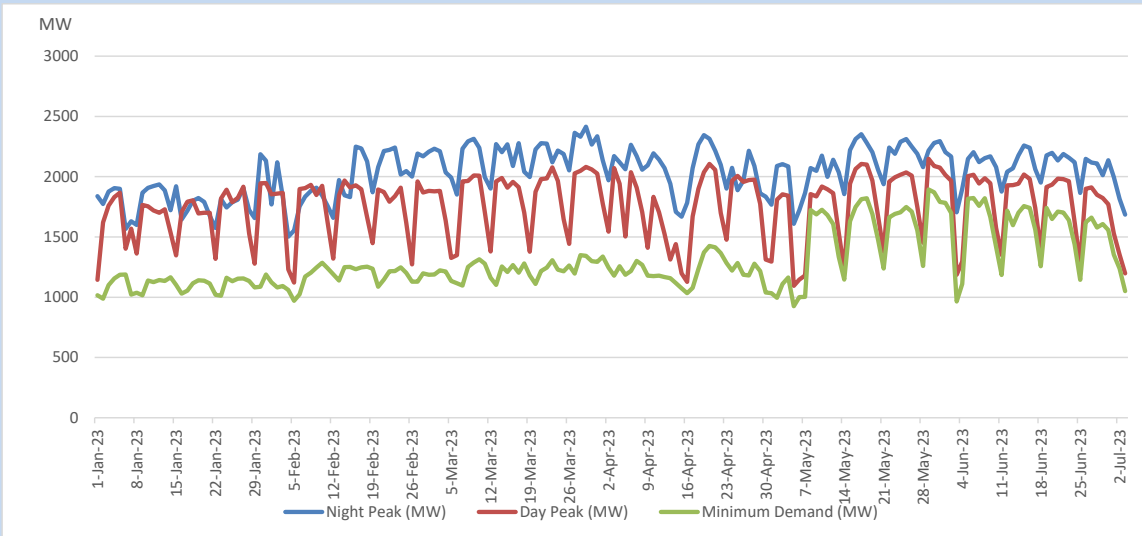
11. Comparison of Total Reservoir Storage Levels with Past Years



12. Variation of Major Hydro Reservoir Levels in the current year (GWh)



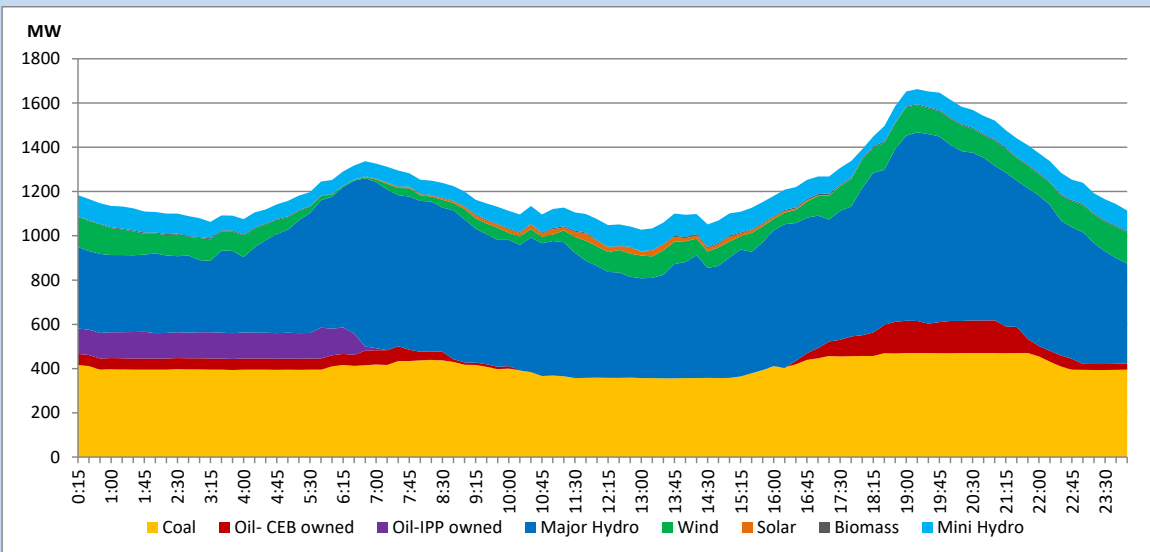
13. Variation of Demand during the current year



The above figures are excluding contribution from roof top solar, non telemetered solar and mini hydro plants

14. Daily Load Curve

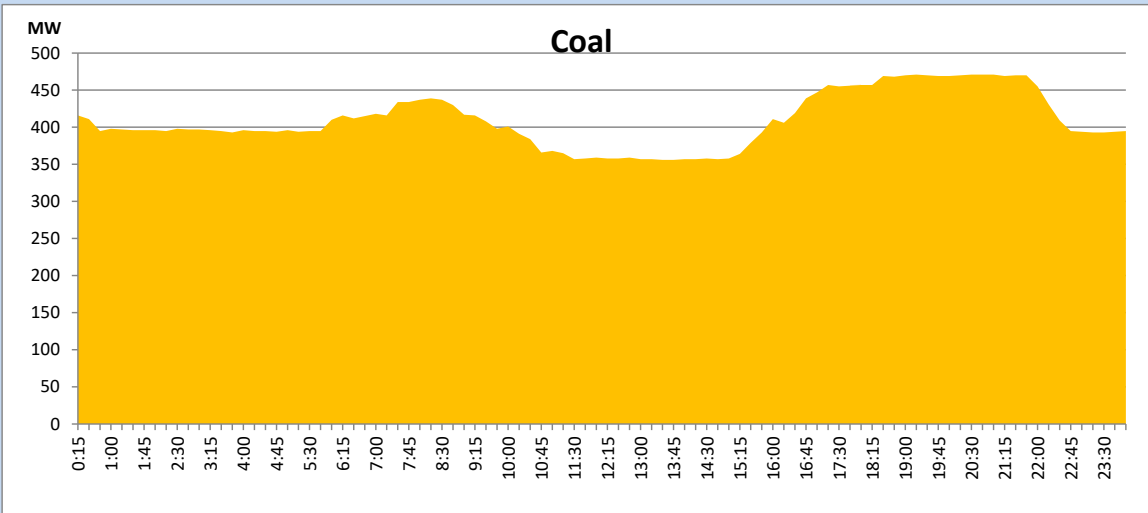
July 3, 2023



Solar and wind data is based on Telemetered Power Stations only

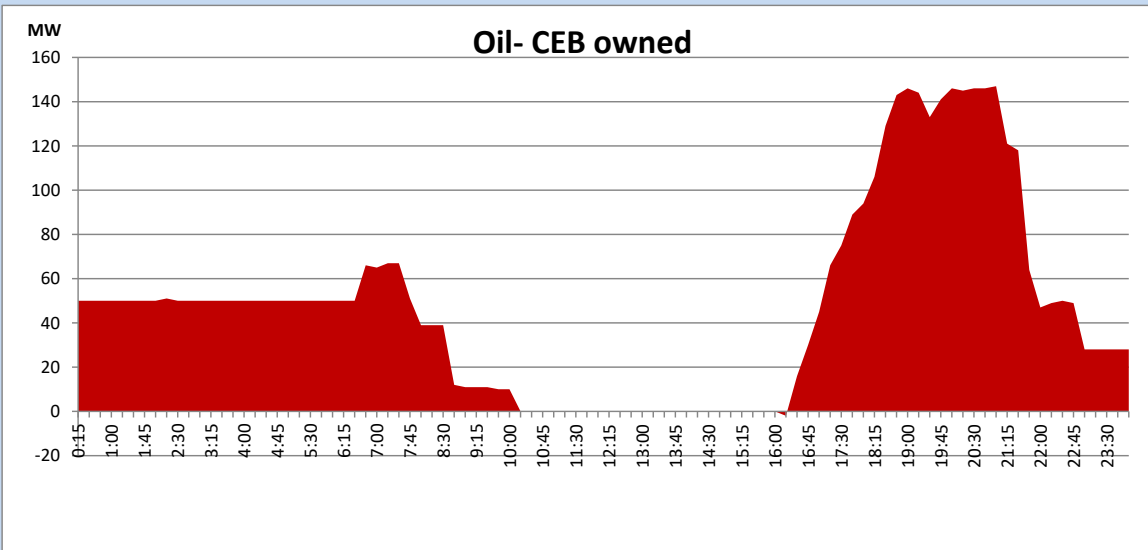
Coal Generation during

July 3, 2023



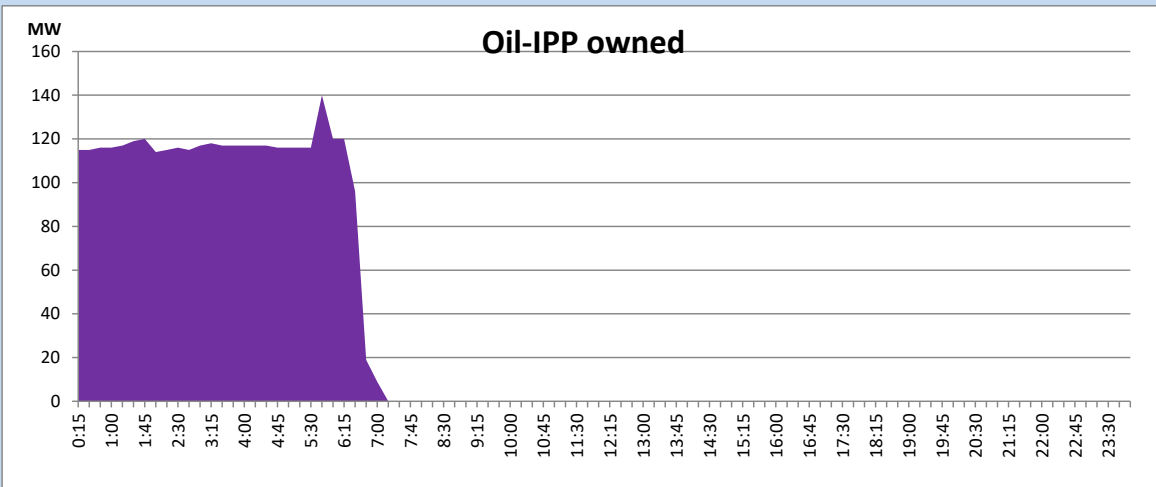
CEB Oil Plant Generation during

July 3, 2023



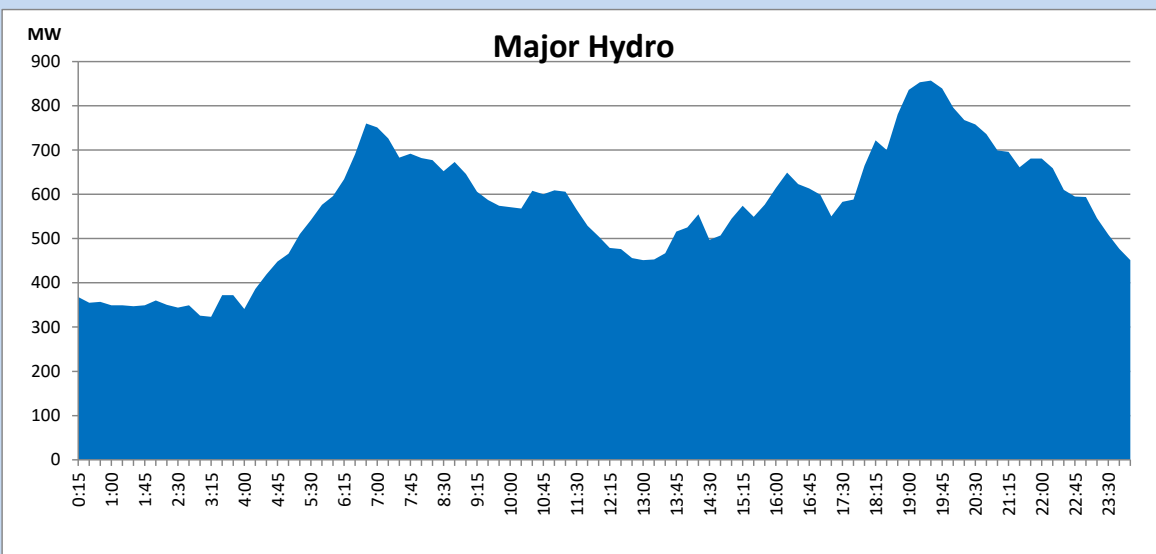
IPP Oil Plant Generation during

July 3, 2023



Major Hydro Generation during

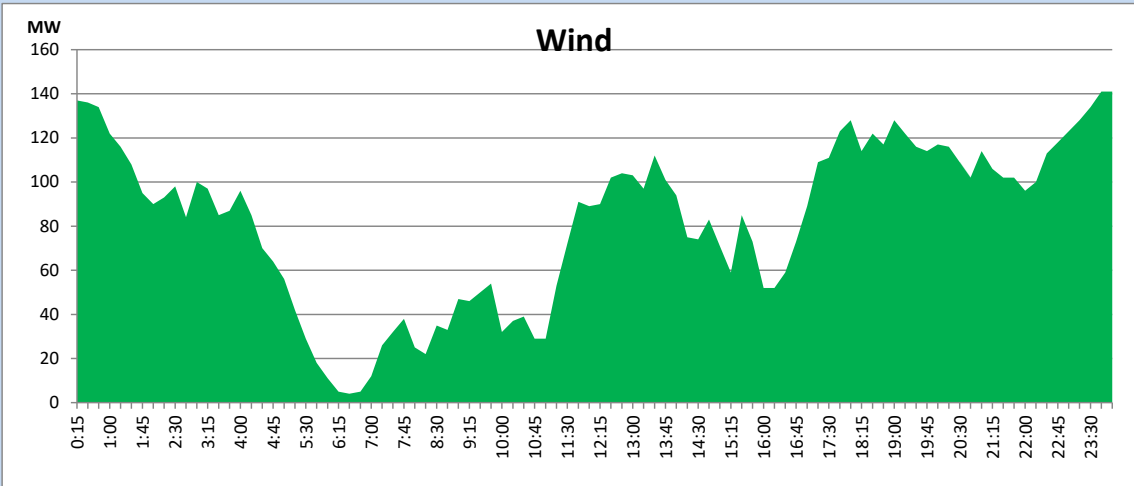
July 3, 2023



Wind Generation during

July 3, 2023

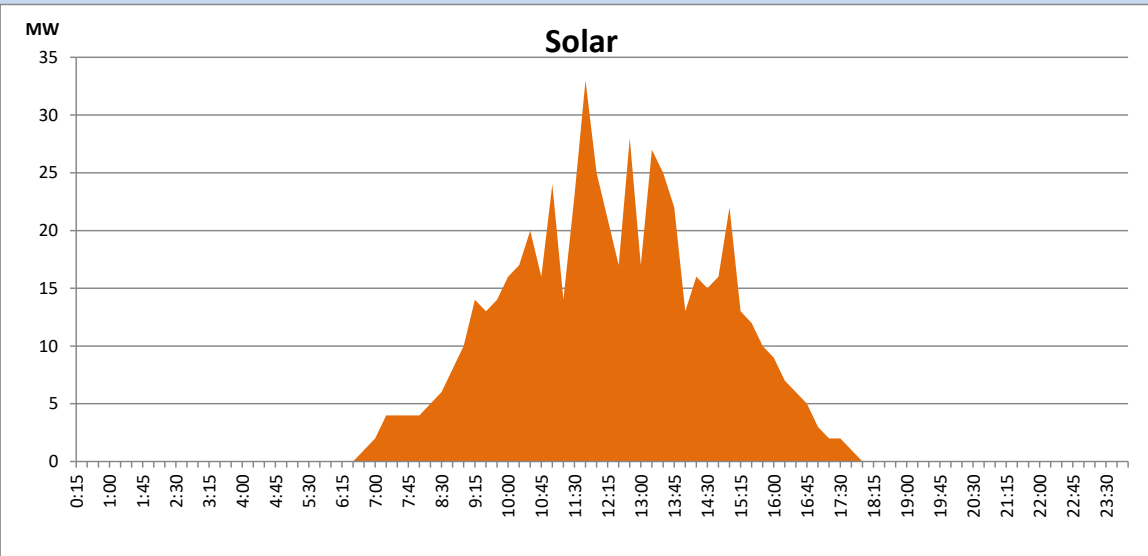
Based on Telemetered Power Stations only



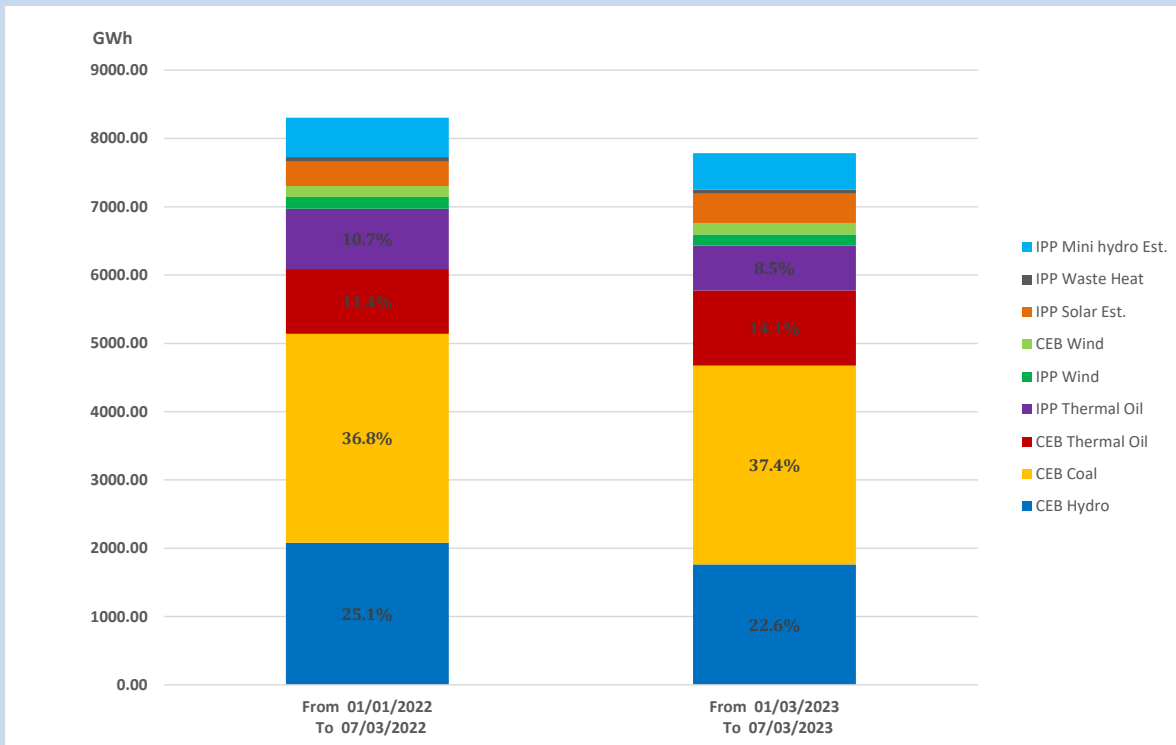
Solar Generation during

July 3, 2023

Based on Telemetered Power Stations only



15. Cumulative Dispatch Comparison with Last Year



Cumulative dispatch

From 01/01/2022 To 07/03/2022

8305.49 GWh

From 01/01/2023 To 07/03/2023

7791.00 GWh

The above figures are including contribution from roof top solar, non telemetered solar and mini hydro plants

Thermal Plant Fuel types

Power Station	Primary Fuel
CEB Thermal	
Sapugaskanda 1	Heavy Fuel
Sapugaskanda 2	Heavy Fuel
Kelanitissa Small Gas Turbines	Auto Diesel
GT 7 - Kelanitissa	Auto Diesel
Kelanitissa CCY	Naphtha or Diesel
Lakvijaya 1	Coal
Lakvijaya 2	Coal
Lakvijaya 3	Coal
Uthuru Janani	Heavy Fuel
Barge CEB	Heavy Fuel
KCCPS -2	Auto Diesel

Power Station	Primary Fuel
Private Thermal	
West Coast	Auto Diesel / Heavy Fuel

Major Incidents reported during the day

July 3, 2023

- 1) Upper Kotmale pond started spilling at 7:49hrs and stopped at 20:51hrs. Norton pond stopped spilling at 18:10hrs.
- 2) Kukule pond started spilling at 11:35hrs and continuous to present hour.
- 3) WPS GSS 33kV B/S CB 02 tripped along with 33kV feeder 09 at 5:13hrs, 5:23hrs, 9:58hrs, 10:37hrs and 11:19hrs due to the operation of E/F protection. 33kV B/S CB 02 & Feeder 09 normalized at 18.02hrs.
- 4) Laxapana pond intermittently spilled during whole day.
- 5) Sapu – Kelaniya cct 02 tripped from Sapu end and tripped & A/R from Kelaniya end at 14:02hrs due to the operation of distance protection. At the same time, Sapu - Kelaniya cct 01 tripped & A/R from both ends due to the operation of Distance protection. Sapu - Kelaniya cct 02 normalized at 14:18hrs.
- 6) KCCP was made unavailable from 21:19 hrs to 5:03hrs (04.07.2023) due to abnormal sound in lube oil pump.
- 7) WPS GSS 33kV B/S CB 01 tripped along with 33kV F07 at 01:48hrs (04/07/2023) due to the operation of O/C protection. 33kV B/S CB normalized at 02:02hrs.