

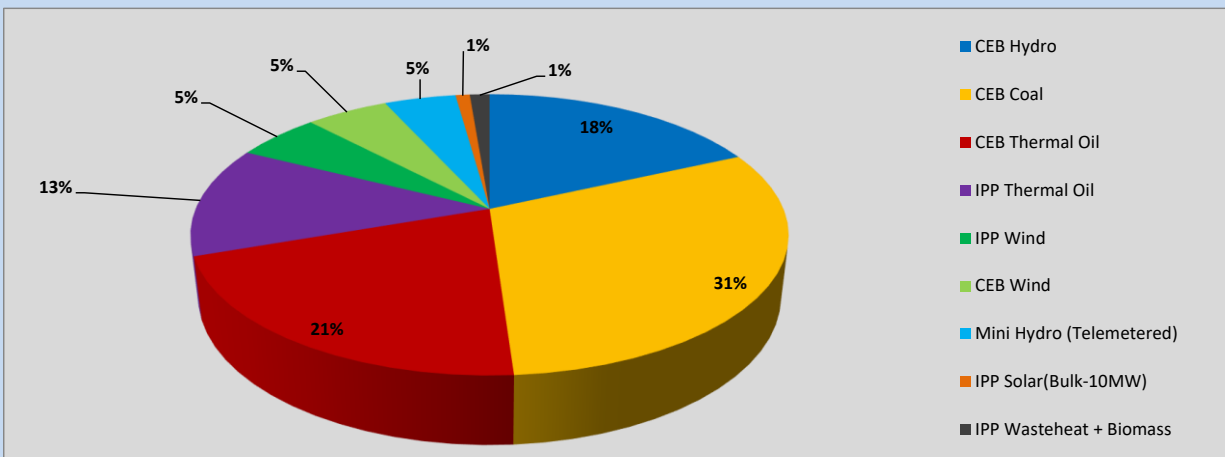
# Generation and Reservoirs Statistics

July 1, 2023



PUBLIC UTILITIES COMMISSION OF SRI LANKA

## 1. Daily Generation Mix in MWh



CEB Hydro	6,691	MWh
CEB Coal	11,249	MWh
CEB Thermal Oil	7,612	MWh
IPP Thermal Oil	4,662	MWh
IPP Wind	2,002	MWh
CEB Wind	1,949	MWh
Mini Hydro (Telemetered)	1,698	MWh
IPP Solar (Bulk)	338	MWh
IPP Wasteheat + Biomass	469	MWh

**Total Generation (Excluding estimated figures) 36,670 MWh**

### Estimated figures of CEB generation report

Estimated unserved energy = 0.00 GWh

Estimated Mini Hydro (Non telemetered) = 1812 MWh

Estimated IPP Solar PV (Bulk 1-10MW) = 304 MWh

Estimated Solar Roof Top PV = 1650 MWh

## 2. Cumulative Dispatch

Following data excludes the contribution from roof top solar, non telemetered solar and mini hydro plants

### For Current Month

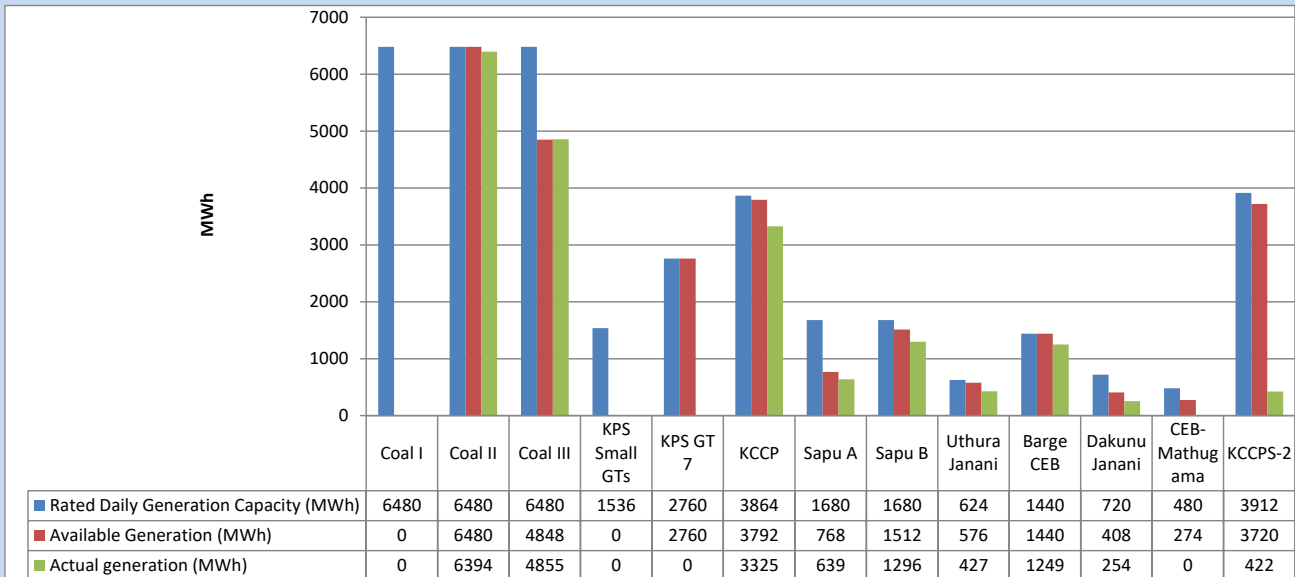
Category	Dispatch (GWh)	
CEB Hydro	7	18.27%
CEB Coal	11	30.67%
CEB Thermal Oil	8	20.75%
IPP Thermal	5	12.70%
SPP Wind	2	5.45%
CEB Wind	2	5.32%
Mini Hydro (Telemetered)	2	4.63%
IPP Solar(Bulk-10MW)	0	0.93%
IPP Wasteheat + BMP	0	1.28%
<b>Total</b>	<b>37</b>	

### For Current Year

Category	Dispatch (GWh)	
CEB Hydro	1,745	24.96%
CEB Coal	2,894	41.41%
CEB Thermal Oil	1,091	15.61%
IPP Thermal	659	9.42%
SPP Wind	153	2.19%
CEB Wind	166	2.37%
Mini Hydro (Telemetered)	168	2.40%
IPP Solar(Bulk-10MW)	53	0.76%
IPP Wasteheat	60	0.87%
<b>Total</b>	<b>6,989</b>	

### 3. CEB owned Thermal Plant Dispatch

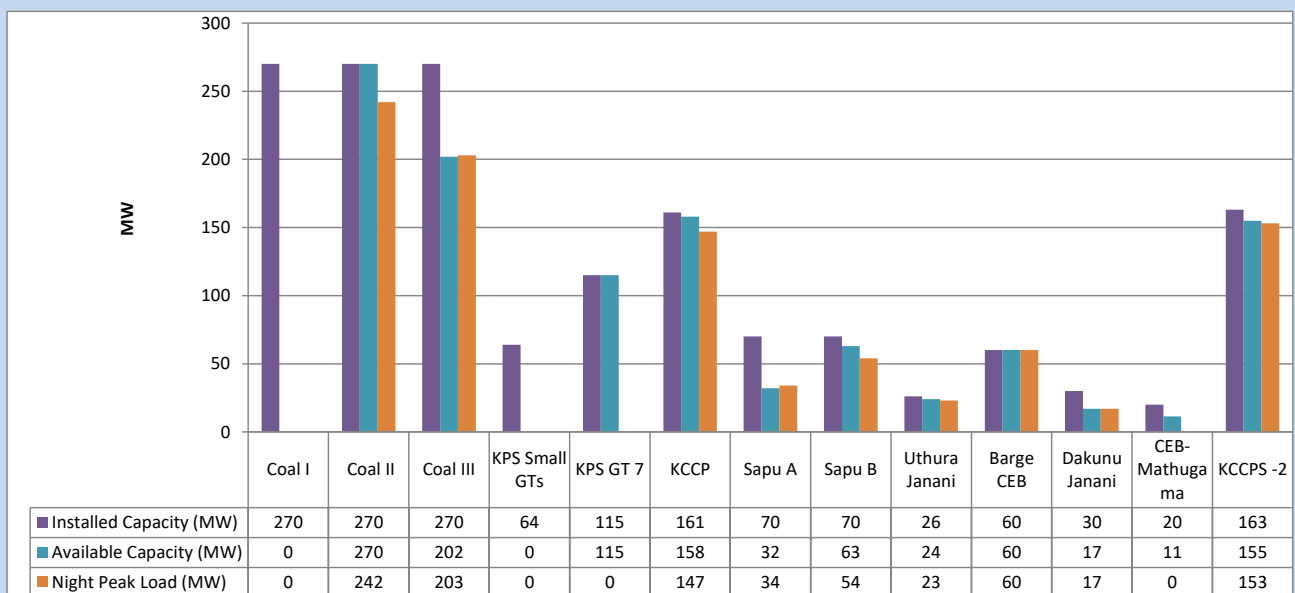
July 1, 2023



Available Generation is estimated based on plant availability at 6.00am on

July 2, 2023

### 4. CEB owned Thermal Plant Loading at the Night Peak

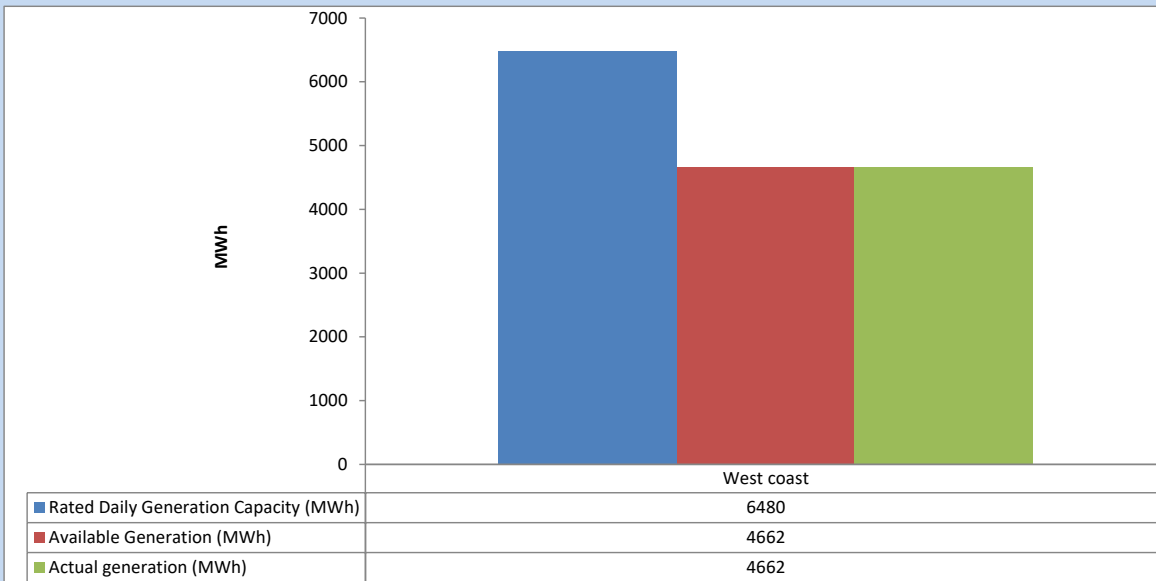


Plant availability is recorded at 6.00 am on

July 2, 2023

## 5. IPP owned Thermal Plant Dispatch

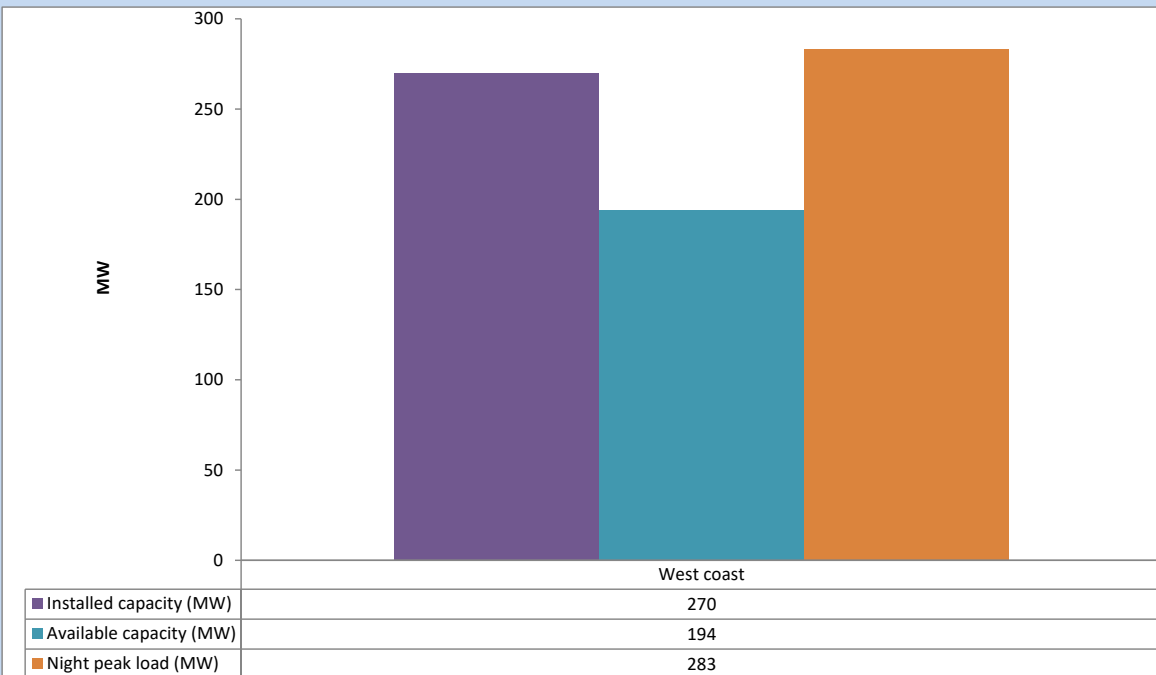
July 1, 2023



Available Generation is estimated based on plant availability at 6.00am on

July 2, 2023

## 6. IPP owned Thermal Plant Loading at the Night Peak

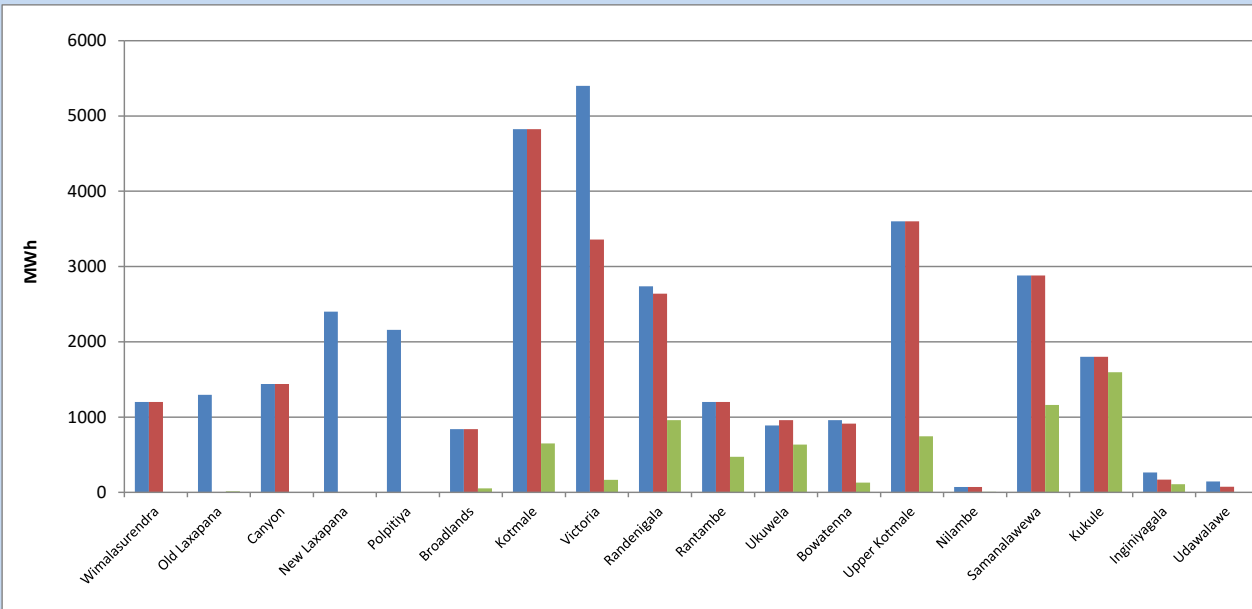


Plant availability is recorded at 6.00 am on

July 2, 2023

## 7. Major Hydro Plant Dispatch

July 1, 2023

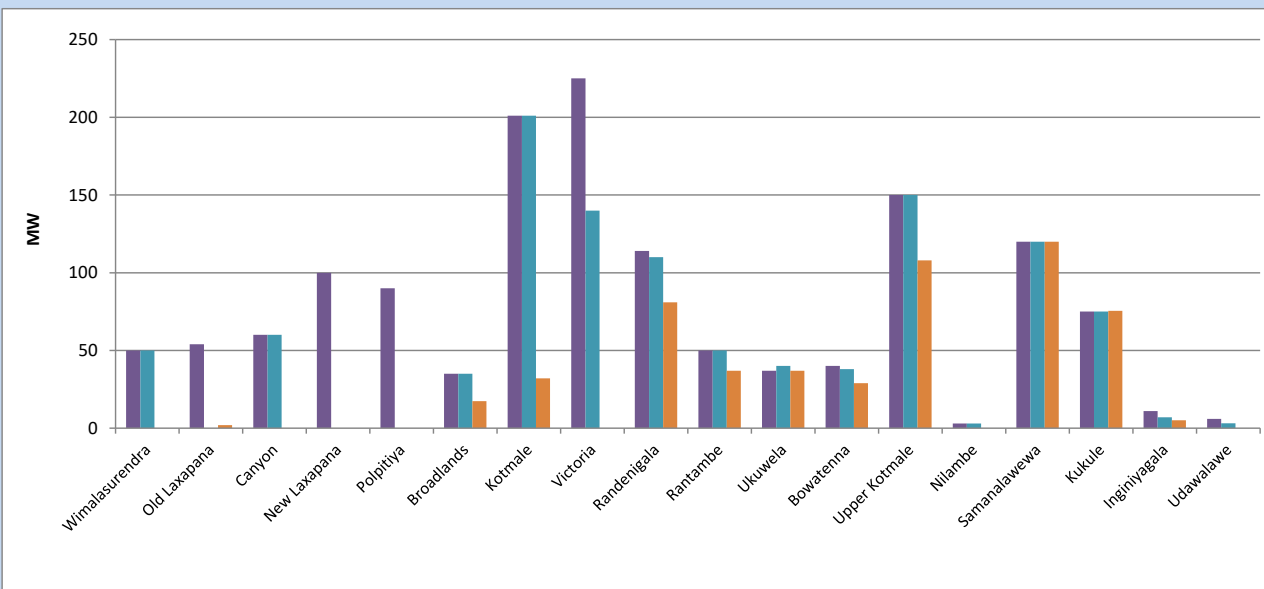


Available Generation is estimated based on plant availability at 6.00am on  
Broadlands power plant is operating in the Commissioning Stage

July 2, 2023

## 8. Major Hydro Plant Loading at Night Peak

July 1, 2023



Plant availability is recorded at 6.00 am on  
Broadlands power plant is operating in the Commissioning Stage

July 2, 2023

## 9. Summary of Major Plant performance

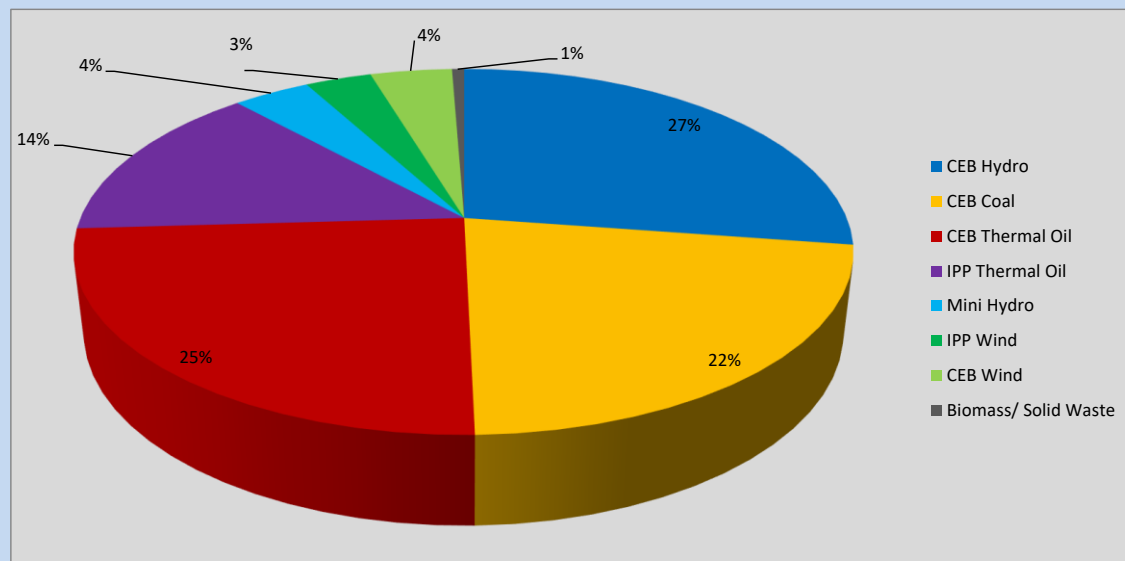
Plant	Installed Capacity	Plant Availability	Night peak Load	Plant Dispatch
	(MW)	(MW)	(MW)	(MWh)
Wimalasurendra	50	50	0	0
Old Laxapana	54	0	2	12
Canyon	60	60	0	0
New Laxapana	100	0	0	0
Polpitiya	90	0	0	0
Broadlands	35	35	17	53
Kotmale	201	201	32	650
Victoria	225	140	0	165
Randenigala	114	110	81	958
Rantambe	50	50	37	472
Ukuwela	37	40	37	633
Bowatenna	40	38	29	129
Upper Kotmale	150	150	108	745
Nilambe	3	3	0	6
Samanalawewa	120	120	120	1,162
Kukule	75	75	76	1,597
Inginiyagala	11	7	5	109
Udawalawe	6	3	0	0
Puttalam Coal I	270	0	0	0
Puttalam Coal II	270	270	242	6,394
Puttalam Coal III	270	202	203	4,855
KPS Small GTs	64	0	0	0
KPS GT 7	115	115	0	0
KCCP	161	158	147	3,325
Sapugaskanda A	70	32	34	639
Sapugaskanda B	70	63	54	1,296
Uthura Janani	26	24	23	427
Barge CEB	60	60	60	1,249
CEB-Hambantota	30	17	17	254
CEB-Mathugama	20	11	0	0
ACE Matara	24	0	0	0
Asia Power	50	0	0	0
KCCPS -2	163	155	153	422
West Coast	270	194	283	4,662
Nothern Power	36	0	0	0
ACE Embilipitiya	93	0	0	0
<b>Total</b>	<b>3,483</b>	<b>2,384</b>	<b>1,995</b>	<b>36,670</b>

Plant availability is the availability recorded at 6 am on

July 2, 2023

### 10. Contribution to the Night Peak in MW

July 1, 2023



CEB Hydro	546 MW
CEB Coal	445 MW
CEB Thermal Oil	488 MW
IPP Thermal Oil	283 MW
Mini Hydro (Telemetered)	76 MW
IPP Wind	65.5 MW
CEB Wind	80.8 MW
Biomass/ Solid Waste	12 MW

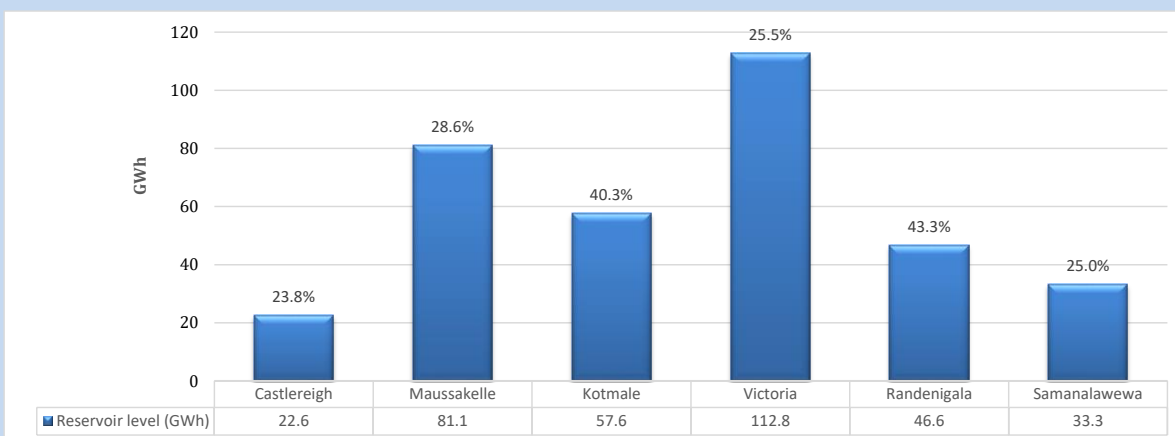
#### Recorded Peak Demand Data

Night Peak*	1,997 MW
Day Peak Maximum Demand	1,529 MW
Day Peak Minimum Demand	1,353 MW
Off Peak Minimum Demand	1,230 MW

Above figures are excluding contribution from roof top solar, non telemetered solar and mini hydro plants

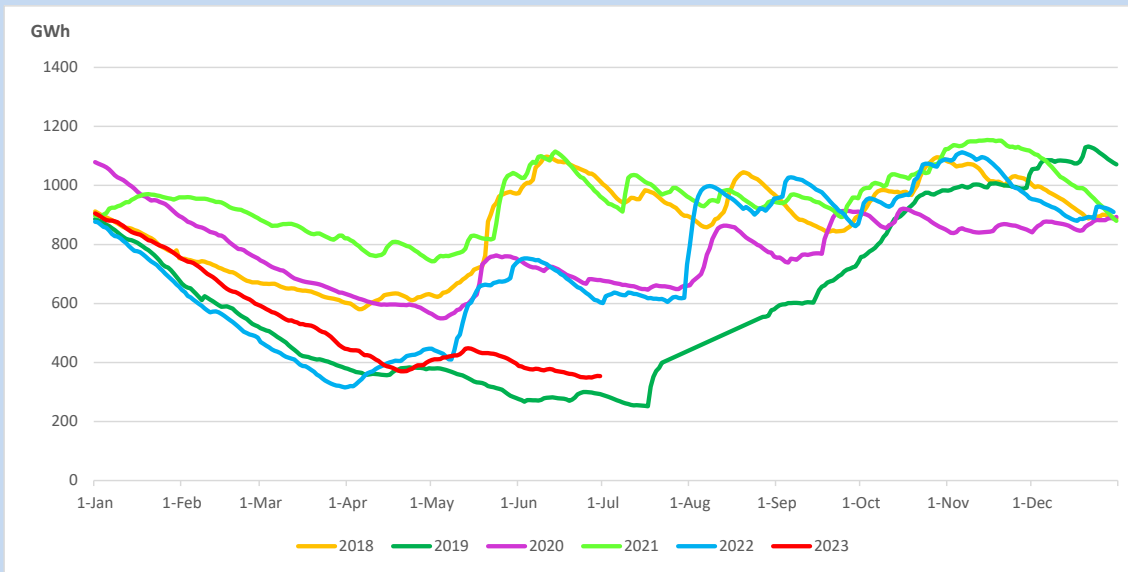
#### Reservoir Levels -

as at 06.00 Hr on July 2, 2023

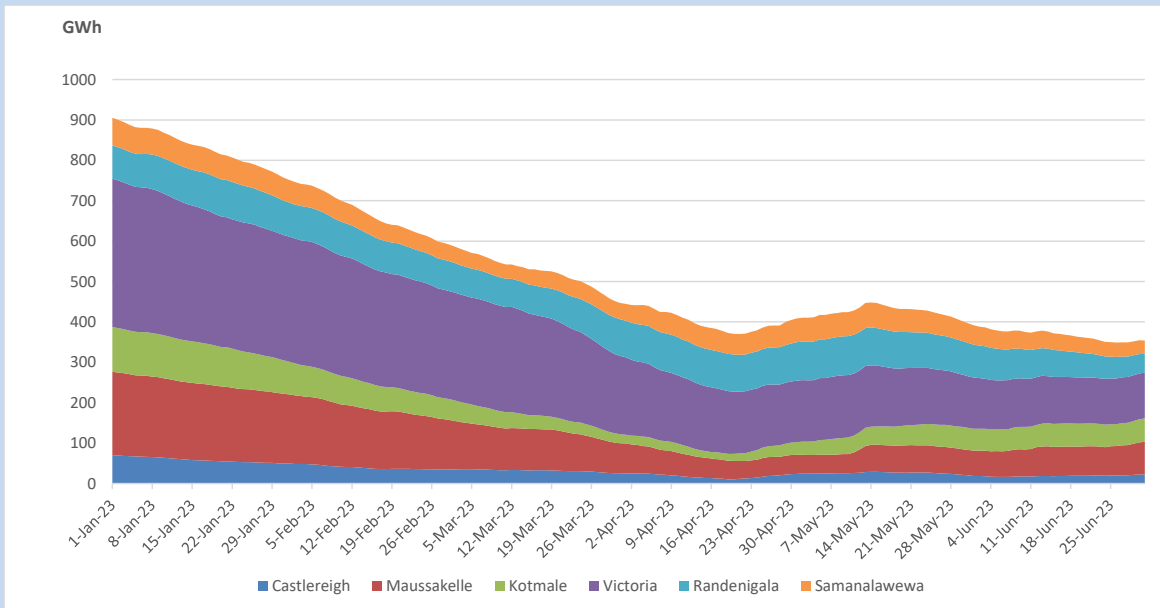


Total Reservoir Level	354 GWh
% of Total capacity	29.4%

## 11. Comparison of Total Reservoir Storage Levels with Past Years

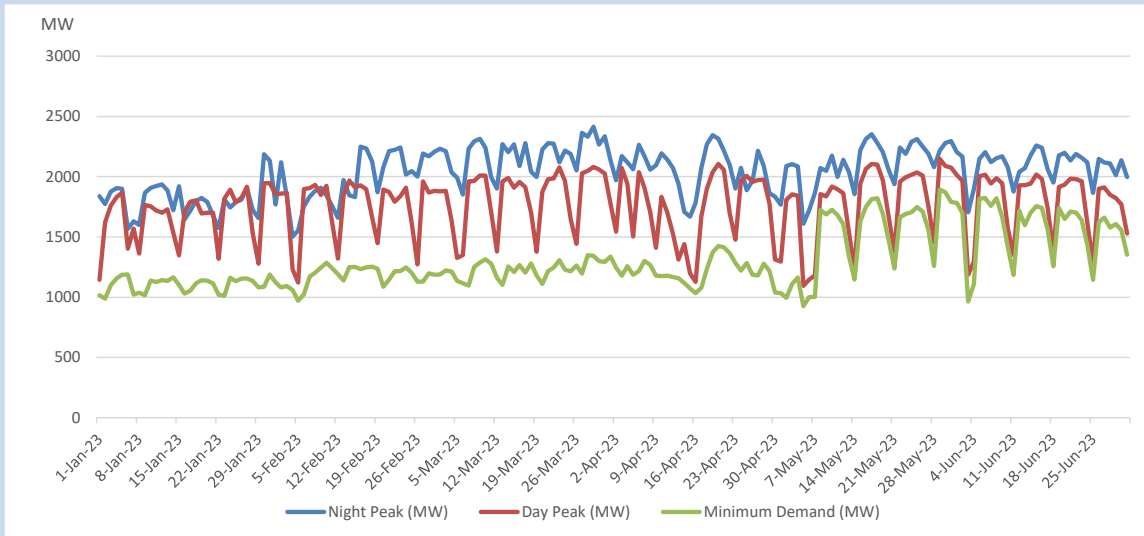


## 12. Variation of Major Hydro Reservoir Levels in the current year (GWh)





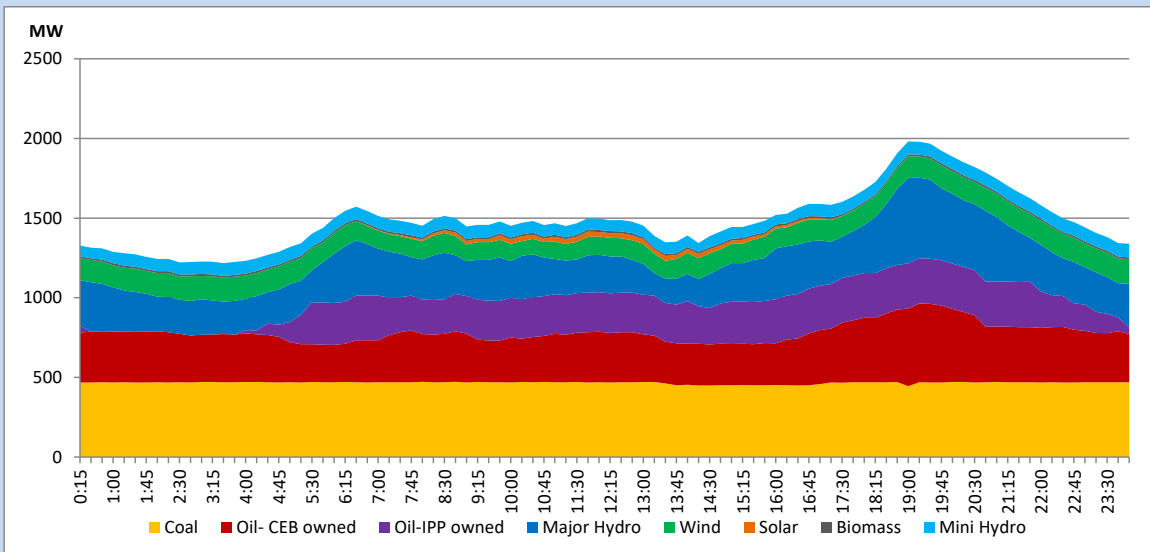
### 13. Variation of Demand during the current year



The above figures are excluding contribution from roof top solar, non telemetered solar and mini hydro plants

### 14. Daily Load Curve

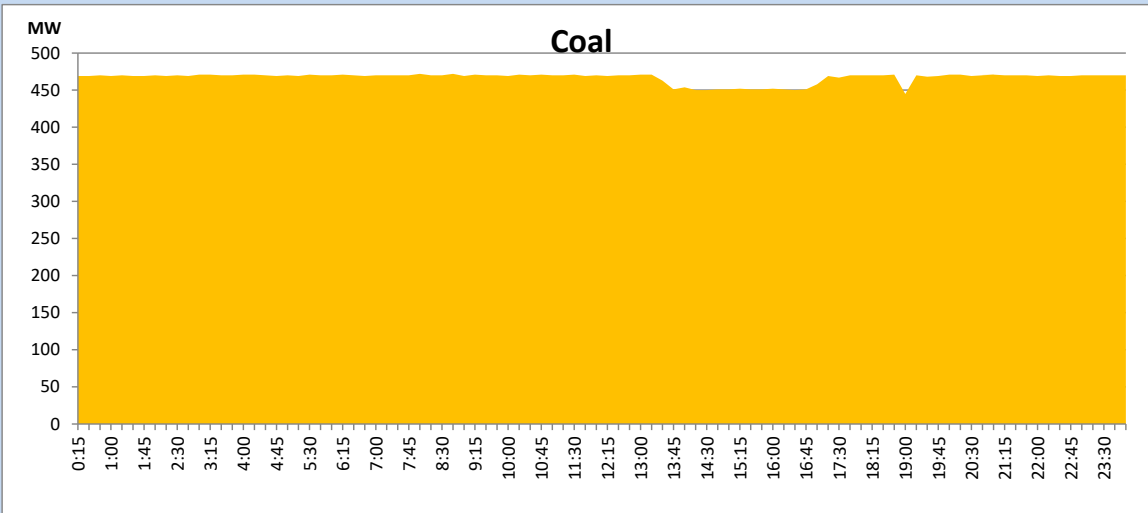
July 1, 2023



Solar and wind data is based on Telemetered Power Stations only

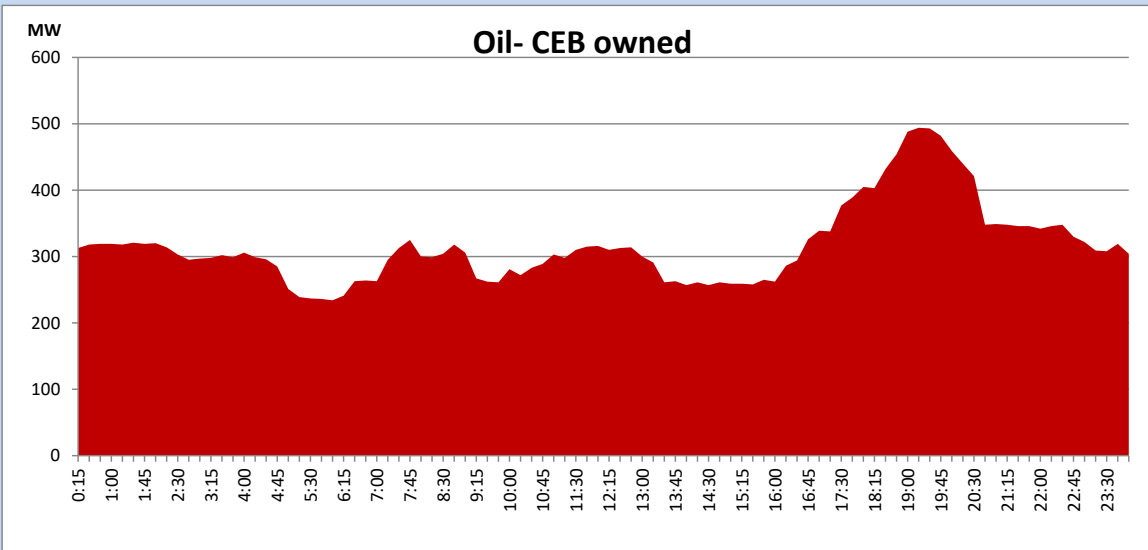
## Coal Generation during

July 1, 2023



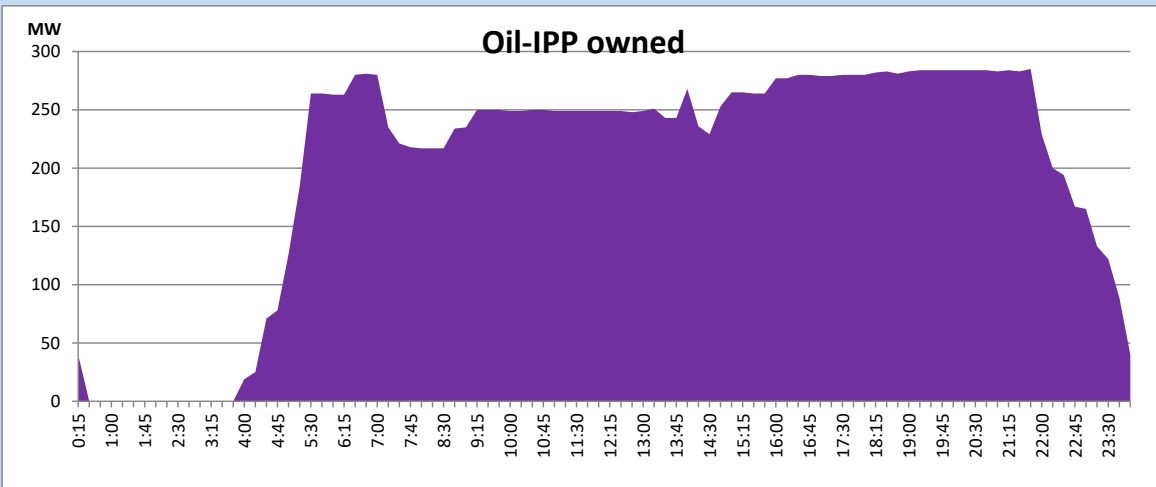
## CEB Oil Plant Generation during

July 1, 2023



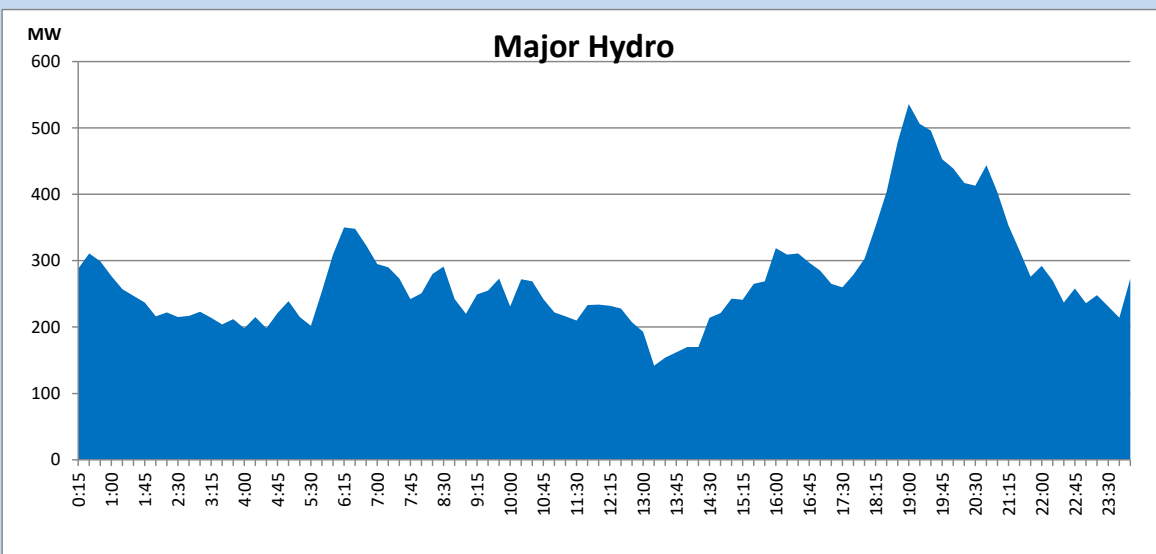
IPP Oil Plant Generation during

July 1, 2023



Major Hydro Generation during

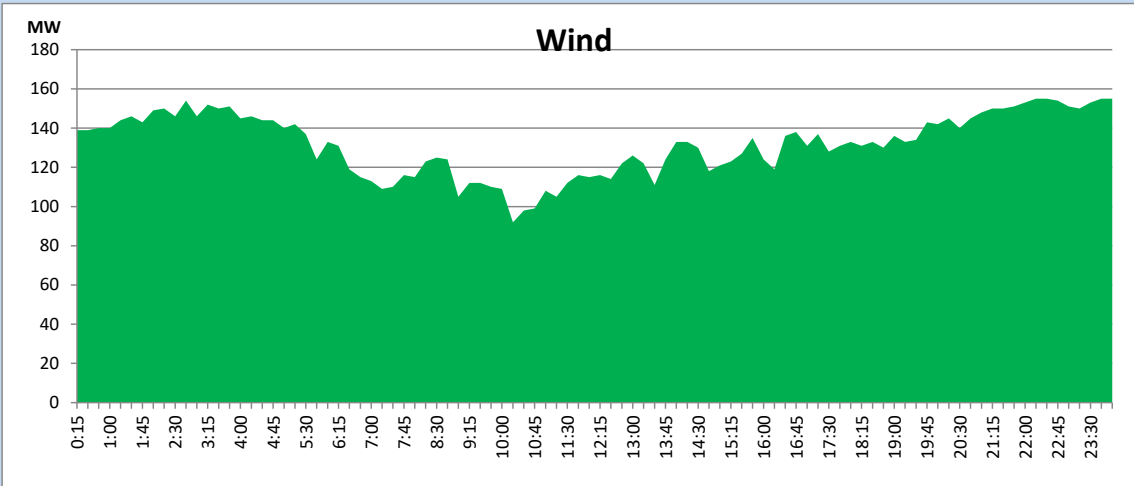
July 1, 2023



## Wind Generation during

July 1, 2023

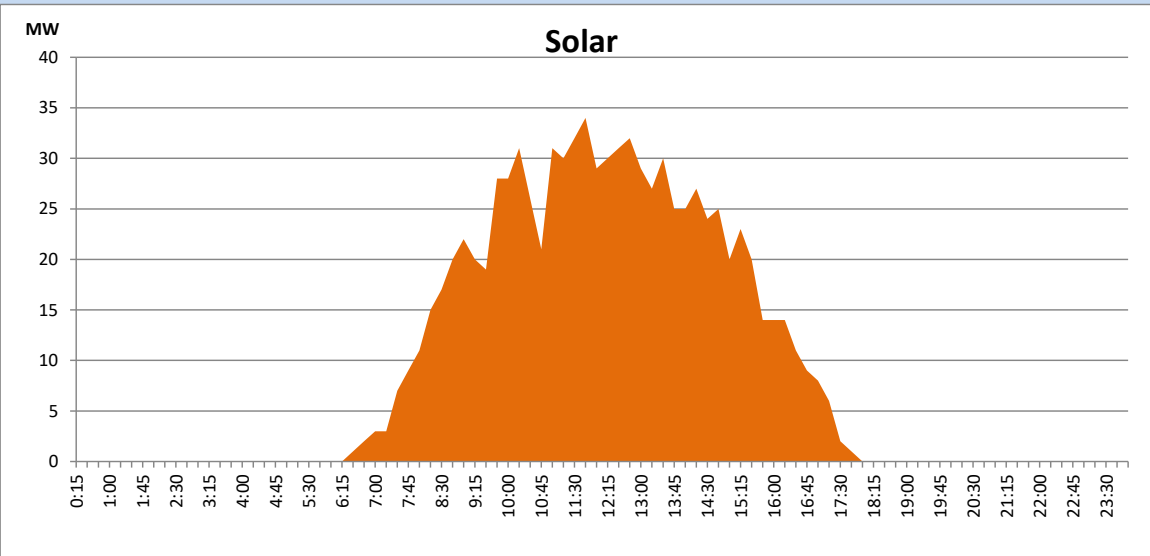
Based on Telemetered Power Stations only



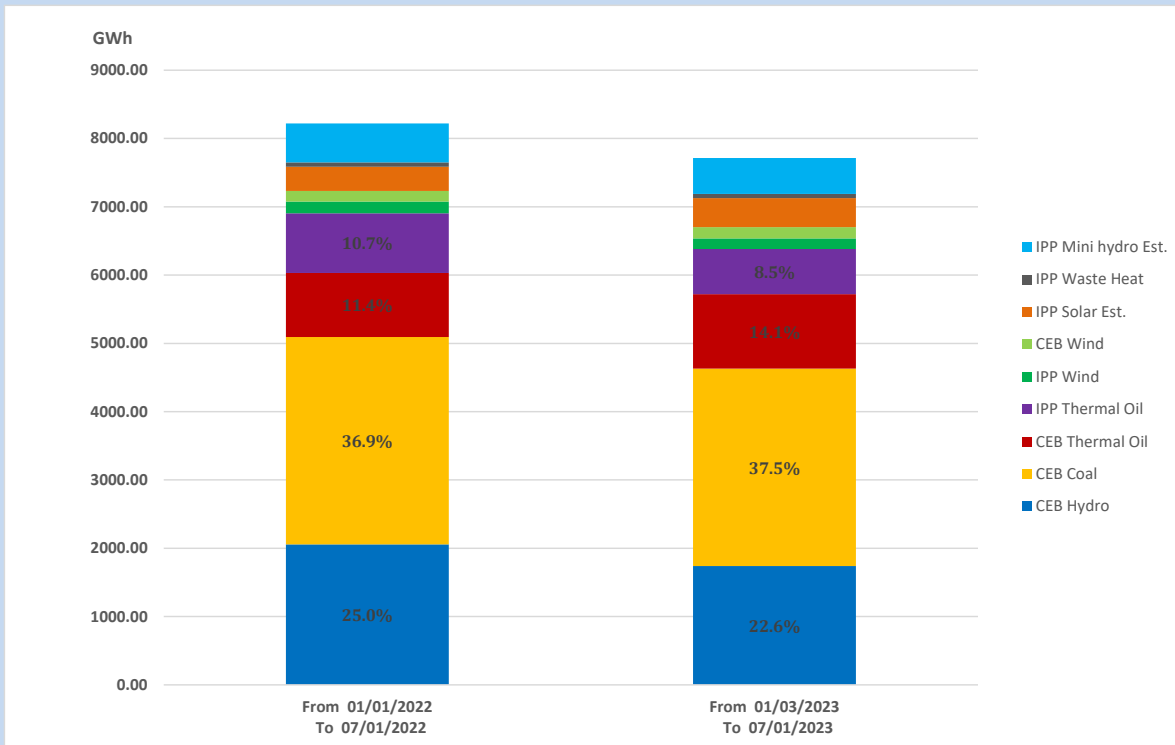
## Solar Generation during

July 1, 2023

Based on Telemetered Power Stations only



## 15. Cumulative Dispatch Comparison with Last Year



The above figures are including contribution from roof top solar, non telemetered solar and mini hydro plants

### Cumulative dispatch

From 01/01/2022 To 07/01/2022

8221.91 GWh

From 01/01/2023 To 07/01/2023

7719.00 GWh

**Thermal Plant Fuel types**

Power Station	Primary Fuel
CEB Thermal	
Sapugaskanda 1	Heavy Fuel
Sapugaskanda 2	Heavy Fuel
Kelanitissa Small Gas Turbines	Auto Diesel
GT 7 - Kelanitissa	Auto Diesel
Kelanitissa CCY	Naphtha or Diesel
Lakvijaya 1	Coal
Lakvijaya 2	Coal
Lakvijaya 3	Coal
Uthuru Janani	Heavy Fuel
Barge CEB	Heavy Fuel
KCCPS -2	Auto Diesel

Power Station	Primary Fuel
Private Thermal	
West Coast	Auto Diesel / Heavy Fuel

**Major Incidents reported during the day**

July 1, 2023

- 1) Lakvijaya PS unit 02 deloaded to 240MW(net) at 19:00hrs, due to a tripping of a coal mill feeder. Lakvijaya PS unit 02 reached full load at 19:10hrs.
- 2) All Polpitiya m/cs, New Laxapana m/cs, Old Laxapana m/cs were unavailable throughout the day to facilitate Laxapana pond de-silting outage.