

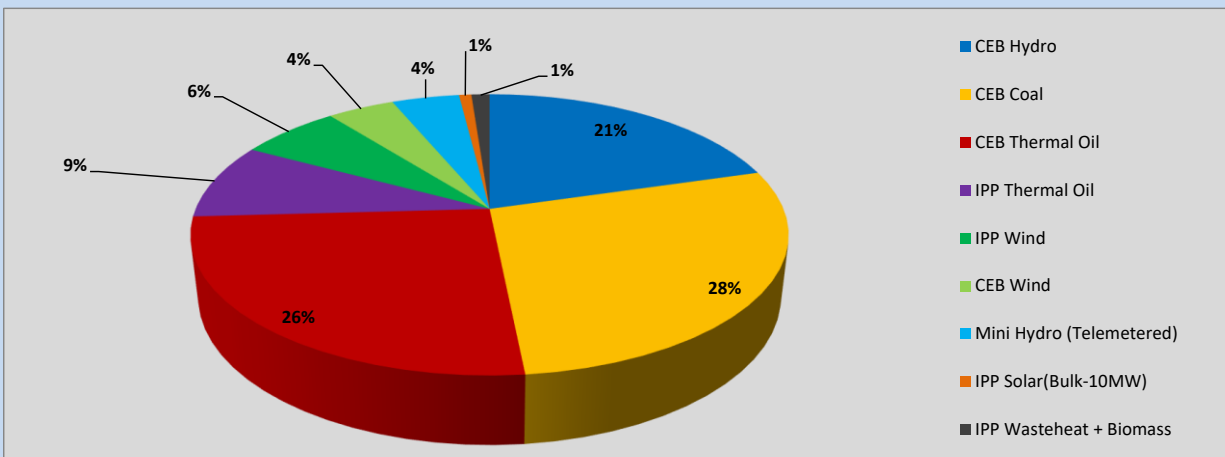
Generation and Reservoirs Statistics

June 26, 2023



PUBLIC UTILITIES COMMISSION OF SRI LANKA

1. Daily Generation Mix in MWh



CEB Hydro	8,241	MWh
CEB Coal	11,235	MWh
CEB Thermal Oil	10,339	MWh
IPP Thermal Oil	3,509	MWh
IPP Wind	2,606	MWh
CEB Wind	1,744	MWh
Mini Hydro (Telemetered)	1,754	MWh
IPP Solar (Bulk)	321	MWh
IPP Wasteheat + Biomass	473	MWh

Total Generation (Excluding estimated figures) 40,222 MWh

Estimated figures of CEB generation report

Estimated unserved energy = 0.00 GWh

Estimated Mini Hydro (Non telemetered) = 2326 MWh

Estimated IPP Solar PV (Bulk 1-10MW) = 304 MWh

Estimated Solar Roof Top PV = 1890 MWh

2. Cumulative Dispatch

Following data excludes the contribution from roof top solar, non telemetered solar and mini hydro plants

For Current Month

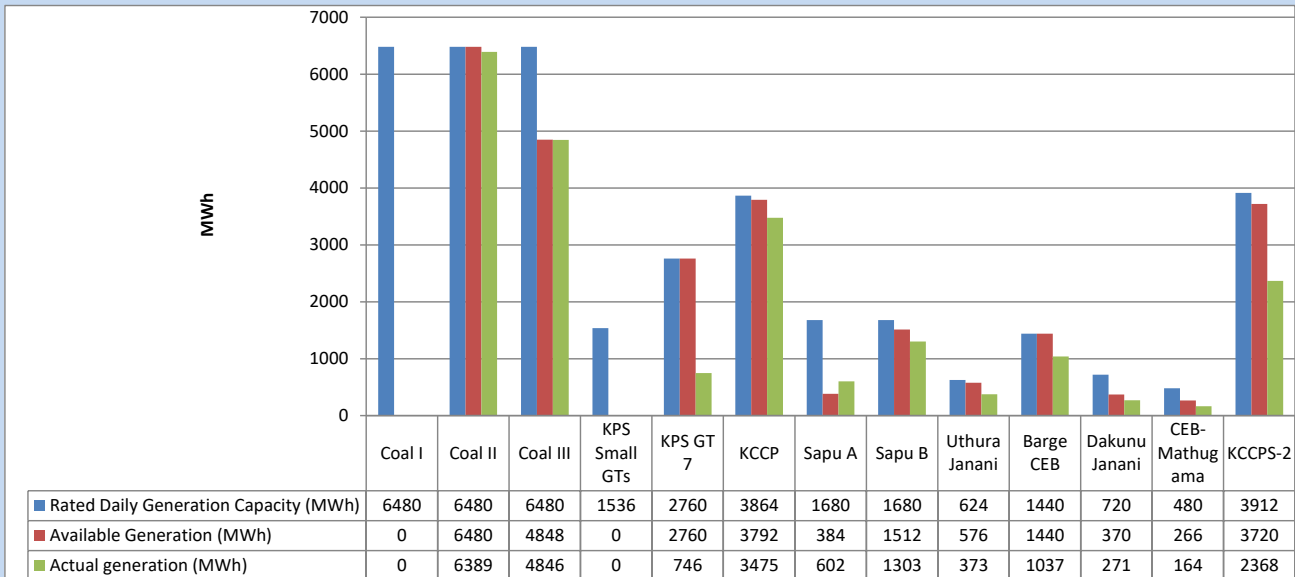
Category	Dispatch (GWh)	
CEB Hydro	224	21.65%
CEB Coal	343	33.11%
CEB Thermal Oil	202	19.55%
IPP Thermal	115	11.09%
SPP Wind	52	5.05%
CEB Wind	45	4.37%
Mini Hydro (Telemetered)	34	3.27%
IPP Solar(Bulk-10MW)	9	0.83%
IPP Wasteheat + BMP	11	1.09%
Total	1,036	

For Current Year

Category	Dispatch (GWh)	
CEB Hydro	1,705	25.10%
CEB Coal	2,838	41.77%
CEB Thermal Oil	1,050	15.45%
IPP Thermal	632	9.30%
SPP Wind	143	2.10%
CEB Wind	156	2.30%
Mini Hydro (Telemetered)	160	2.35%
IPP Solar(Bulk-10MW)	52	0.76%
IPP Wasteheat	58	0.86%
Total	6,794	

3. CEB owned Thermal Plant Dispatch

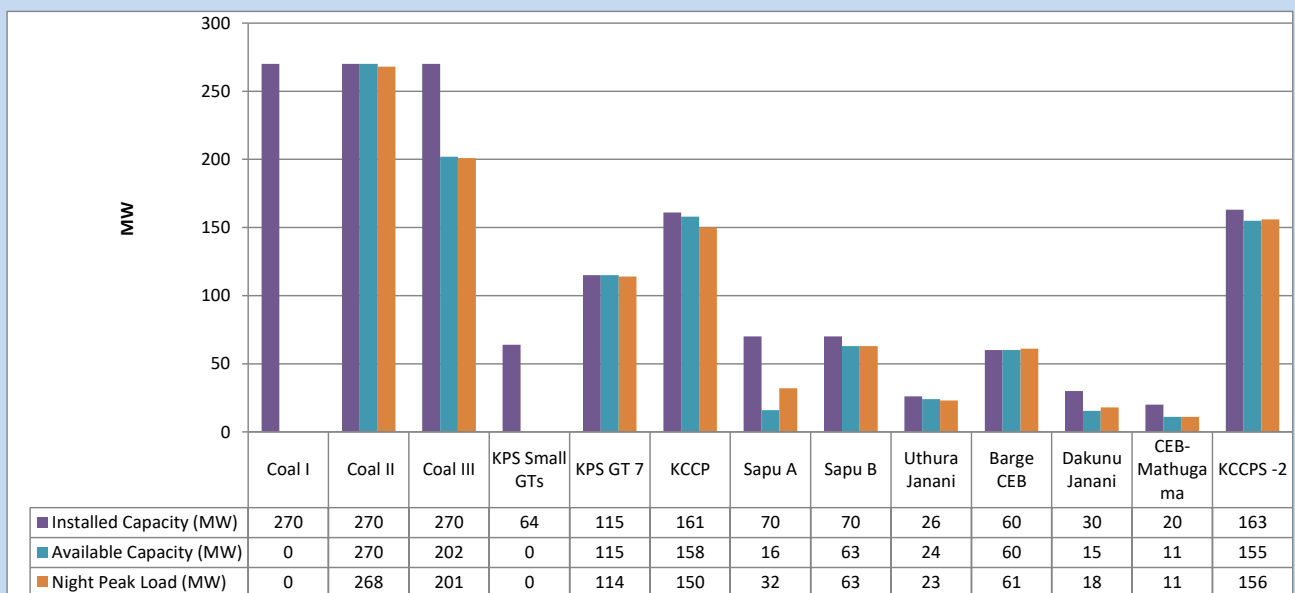
June 26, 2023



Available Generation is estimated based on plant availability at 6.00am on

June 27, 2023

4. CEB owned Thermal Plant Loading at the Night Peak

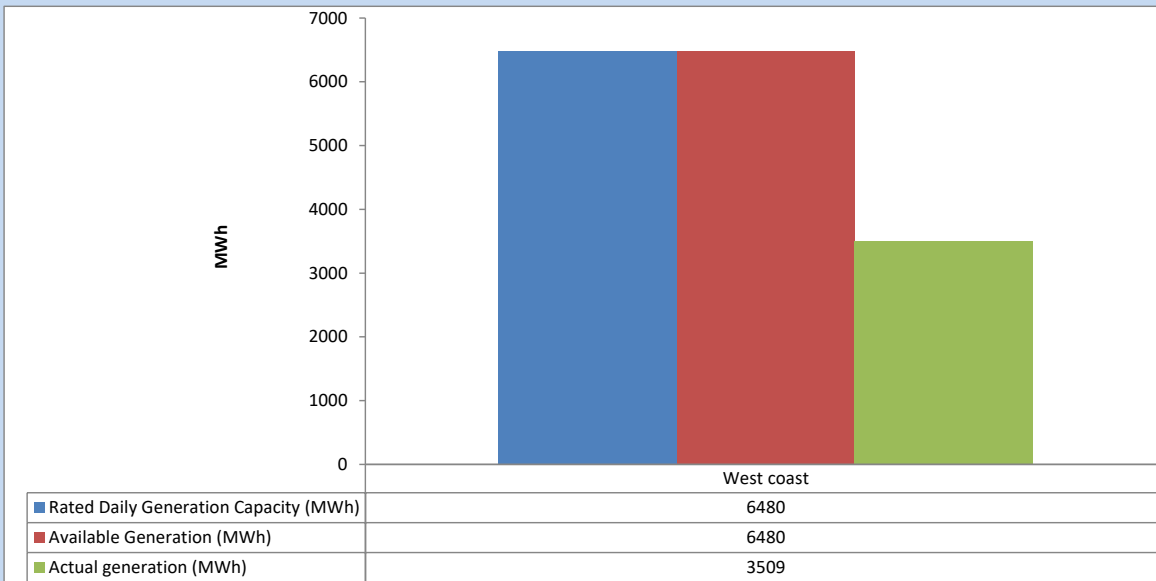


Plant availability is recorded at 6.00 am on

June 27, 2023

5. IPP owned Thermal Plant Dispatch

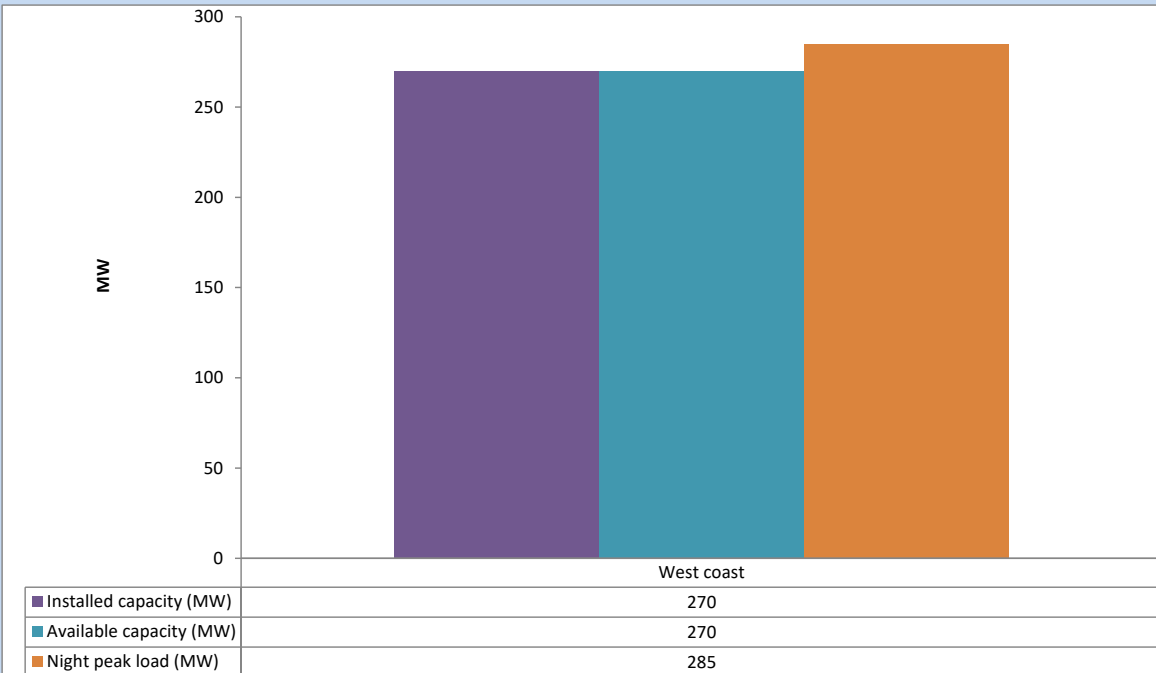
June 26, 2023



Available Generation is estimated based on plant availability at 6.00am on

June 27, 2023

6. IPP owned Thermal Plant Loading at the Night Peak

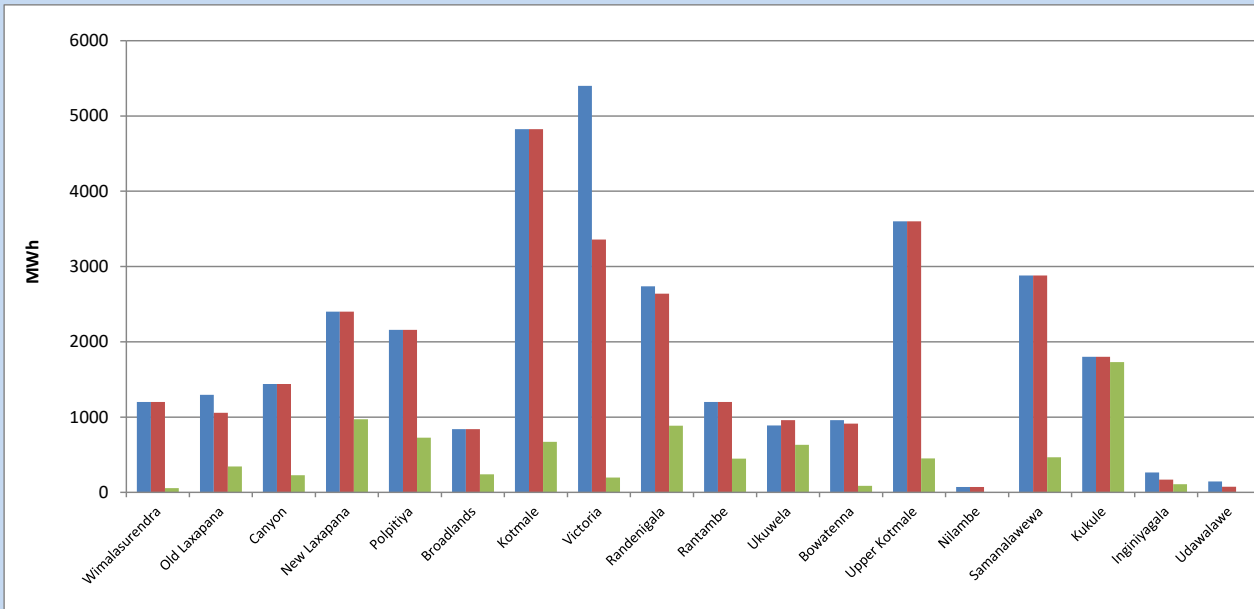


Plant availability is recorded at 6.00 am on

June 27, 2023

7. Major Hydro Plant Dispatch

June 26, 2023

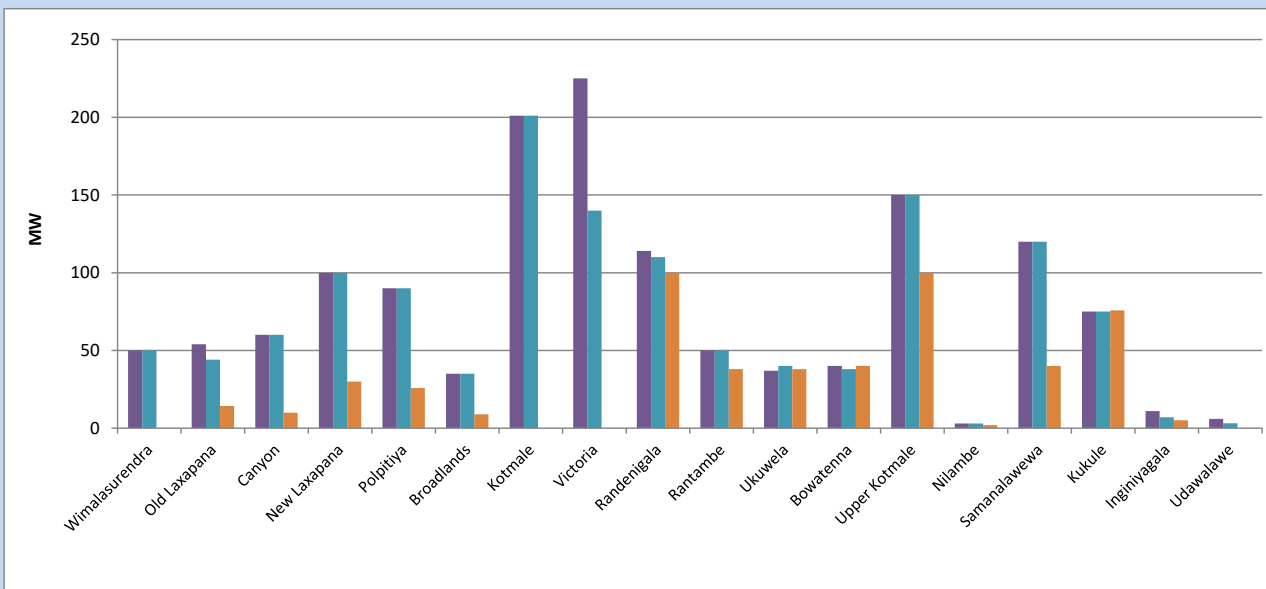


Available Generation is estimated based on plant availability at 6.00am on
Broadlands power plant is operating in the Commissioning Stage

June 27, 2023

8. Major Hydro Plant Loading at Night Peak

June 26, 2023



Plant availability is recorded at 6.00 am on
Broadlands power plant is operating in the Commissioning Stage

June 27, 2023

9. Summary of Major Plant performance

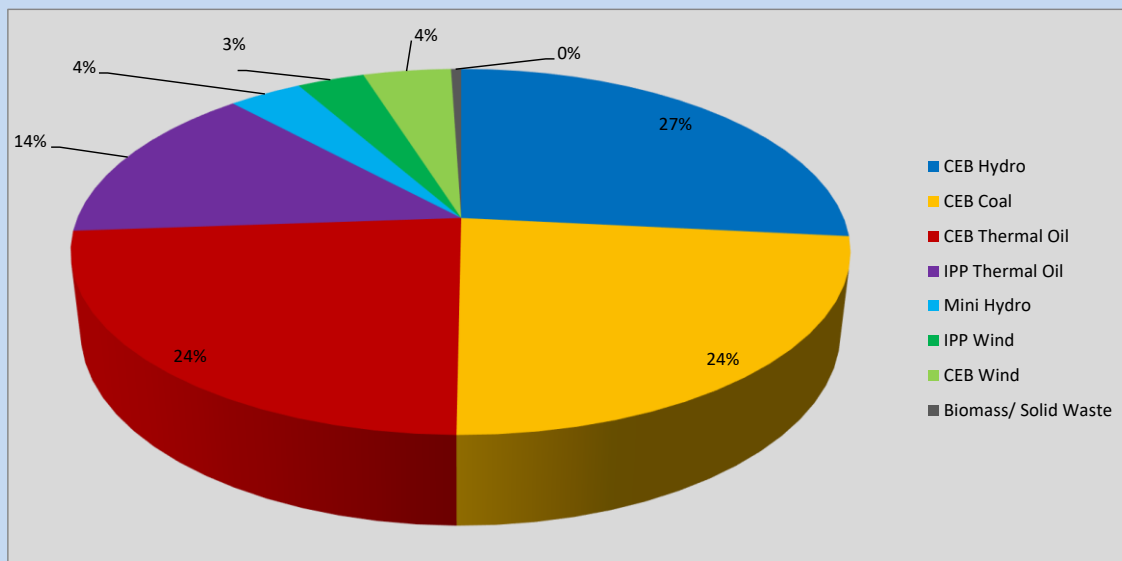
Plant	Installed Capacity	Plant Availability	Night peak Load	Plant Dispatch
	(MW)	(MW)	(MW)	(MWh)
Wimalasurendra	50	50	0	55
Old Laxapana	54	44	14	345
Canyon	60	60	10	226
New Laxapana	100	100	30	971
Polpitiya	90	90	26	726
Broadlands	35	35	9	241
Kotmale	201	201	0	670
Victoria	225	140	0	196
Randenigala	114	110	100	884
Rantambe	50	50	38	449
Ukuwela	37	40	38	631
Bowatenna	40	38	40	88
Upper Kotmale	150	150	100	450
Nilambe	3	3	2	5
Samanalawewa	120	120	40	466
Kukule	75	75	76	1,730
Inginiyagala	11	7	5	108
Udawalawe	6	3	0	0
Puttalam Coal I	270	0	0	0
Puttalam Coal II	270	270	268	6,389
Puttalam Coal III	270	202	201	4,846
KPS Small GTs	64	0	0	0
KPS GT 7	115	115	114	746
KCCP	161	158	150	3,475
Sapugaskanda A	70	16	32	602
Sapugaskanda B	70	63	63	1,303
Uthura Janani	26	24	23	373
Barge CEB	60	60	61	1,037
CEB-Hambantota	30	15	18	271
CEB-Mathugama	20	11	11	164
ACE Matara	24	0	0	0
Asia Power	50	0	0	0
KCCPS -2	163	155	156	2,368
West Coast	270	270	285	3,509
Nothern Power	36	0	0	0
ACE Embilipitiya	93	0	0	0
Total	3,483	2,676	2,145	40,222

Plant availability is the availability recorded at 6 am on

June 27, 2023

10. Contribution to the Night Peak in MW

June 26, 2023



CEB Hydro	530 MW
CEB Coal	469 MW
CEB Thermal Oil	472 MW
IPP Thermal Oil	472 MW
IPP Wind	66.4 MW
CEB Wind	86.7 MW
Mini Hydro (Telemetered)	10 MW

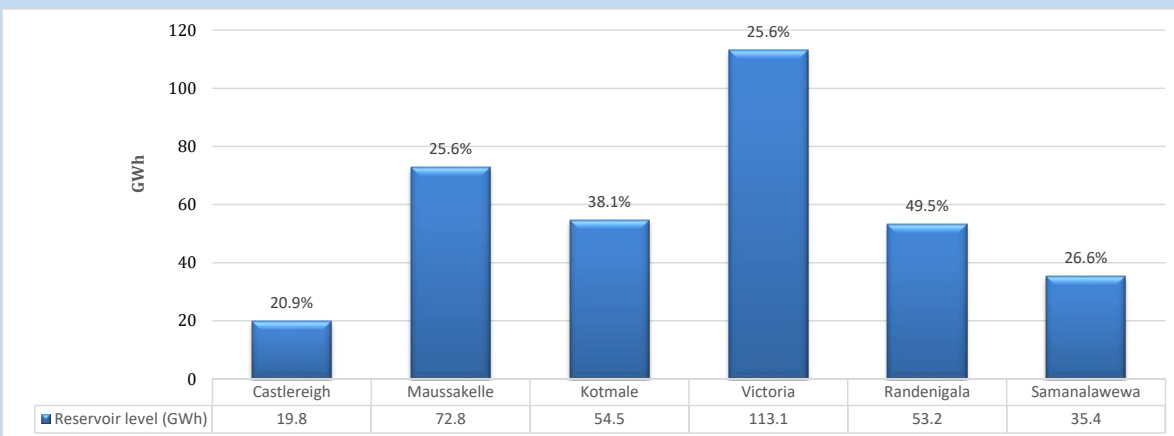
Recorded Peak Demand Data

Night Peak*	2,147 MW
Day Peak Maximum Demand	1,899 MW
Day Peak Minimum Demand	1,622 MW
Off Peak Minimum Demand	1,103 MW

Above figures are excluding contribution from roof top solar, non telemetered solar and mini hydro plants

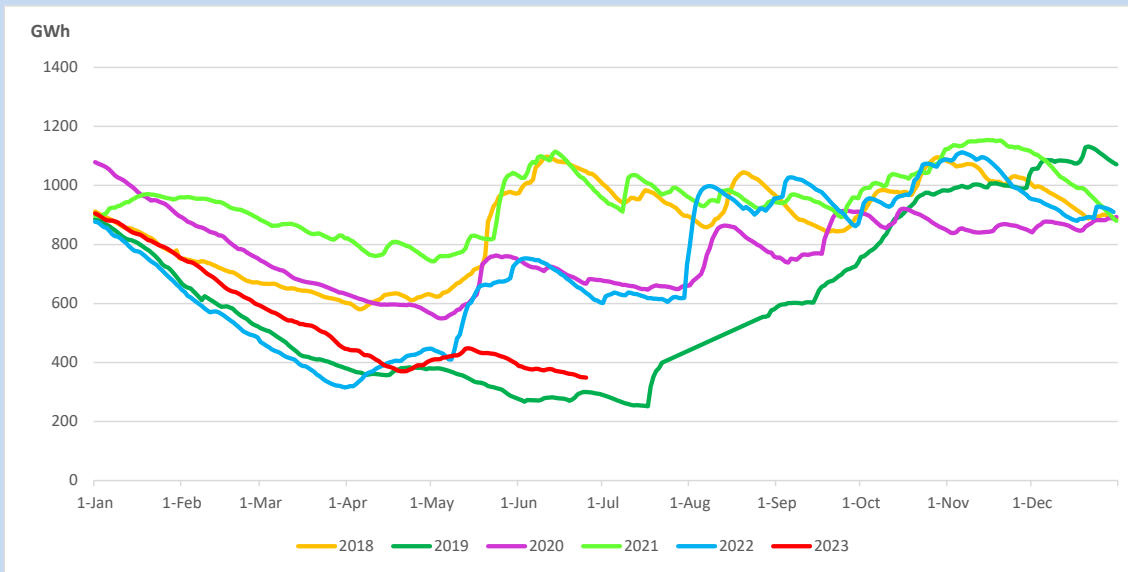
Reservoir Levels -

as at 06.00 Hr on June 27, 2023

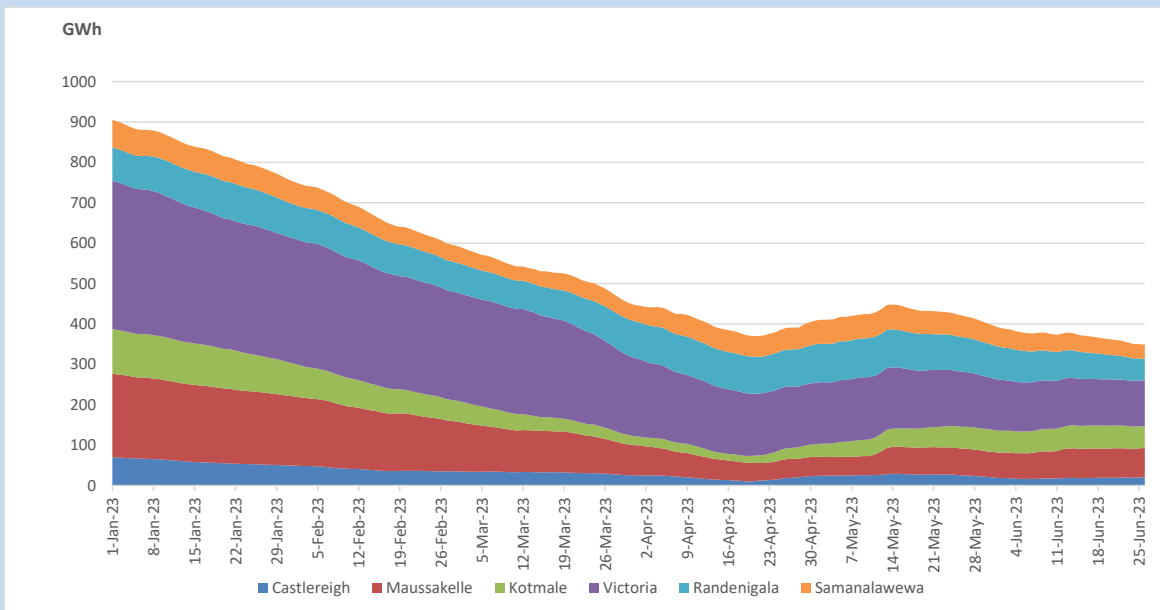


Total Reservoir Level	348.8 GWh
% of Total capacity	29.0%

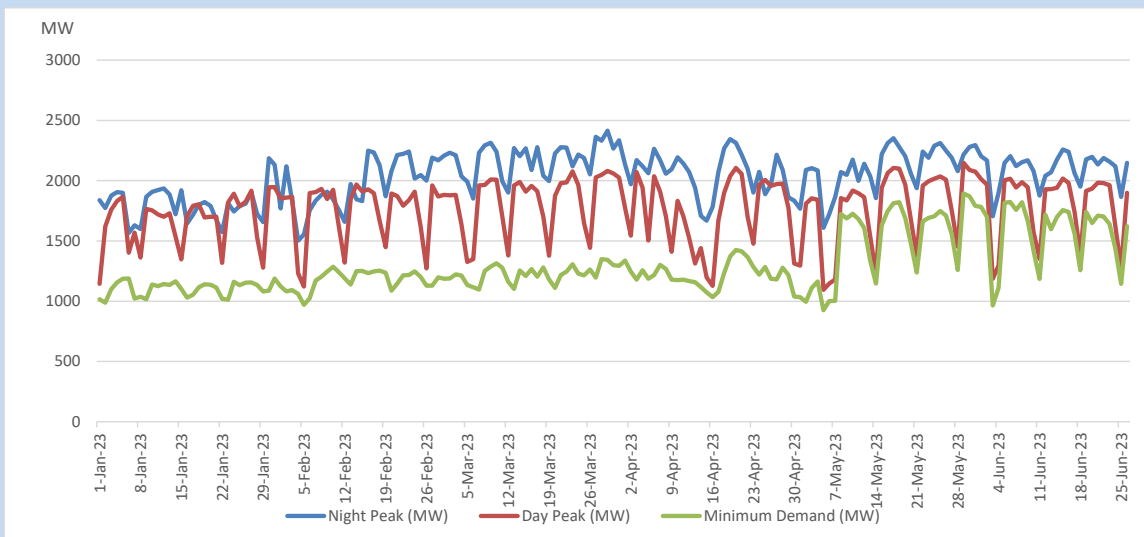
11. Comparison of Total Reservoir Storage Levels with Past Years



12. Variation of Major Hydro Reservoir Levels in the current year (GWh)



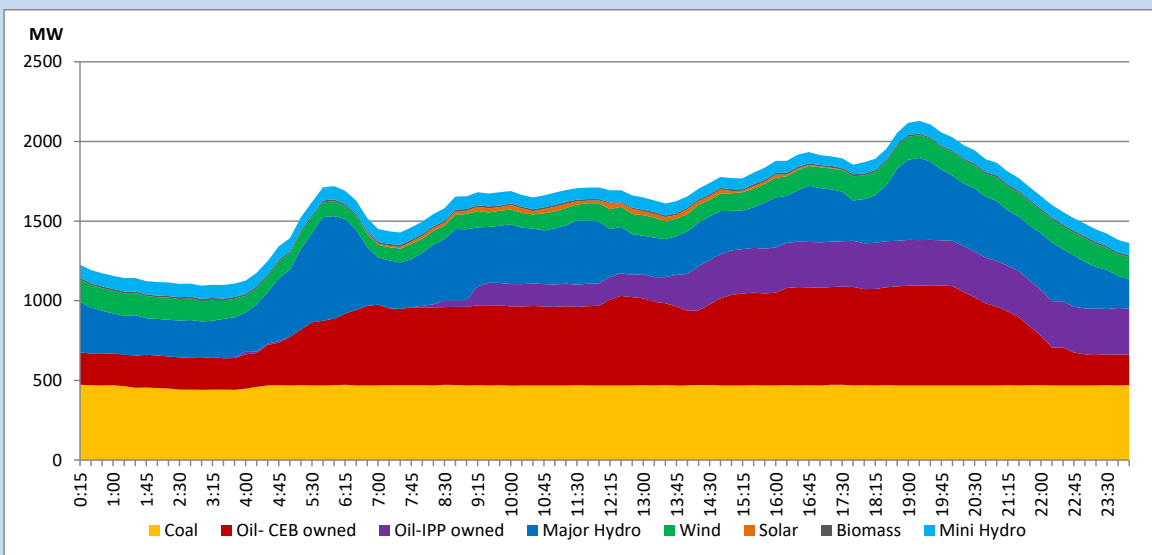
13. Variation of Demand during the current year



The above figures are excluding contribution from roof top solar, non telemetered solar and mini hydro plants

14. Daily Load Curve

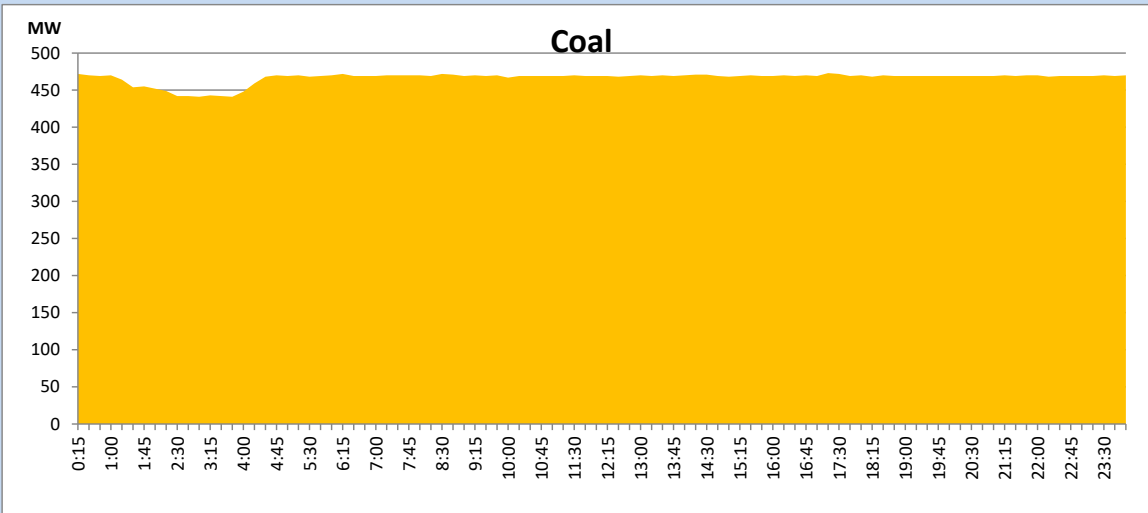
June 26, 2023



Solar and wind data is based on Telemetered Power Stations only

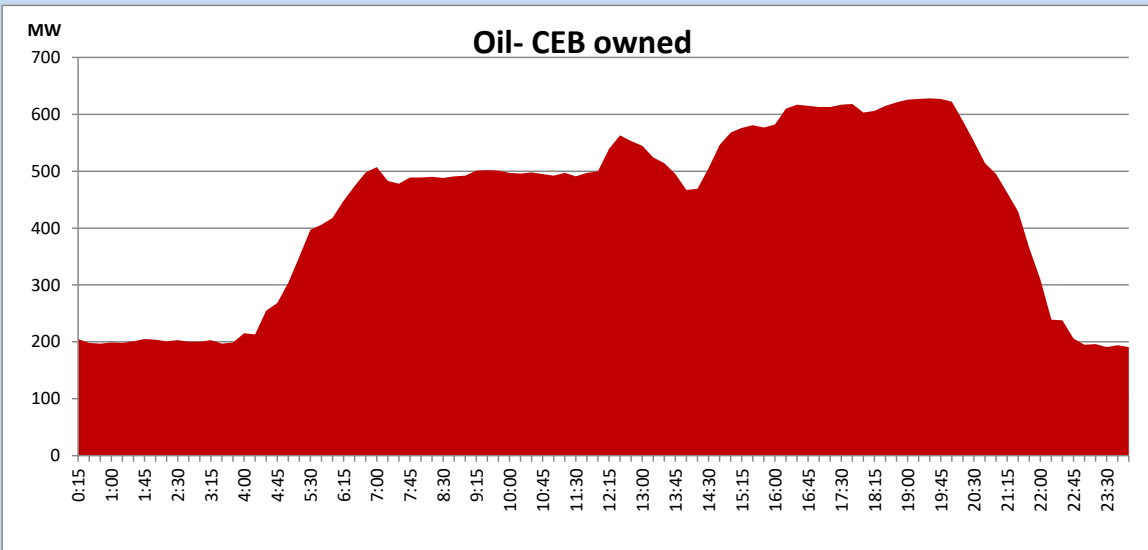
Coal Generation during

June 26, 2023



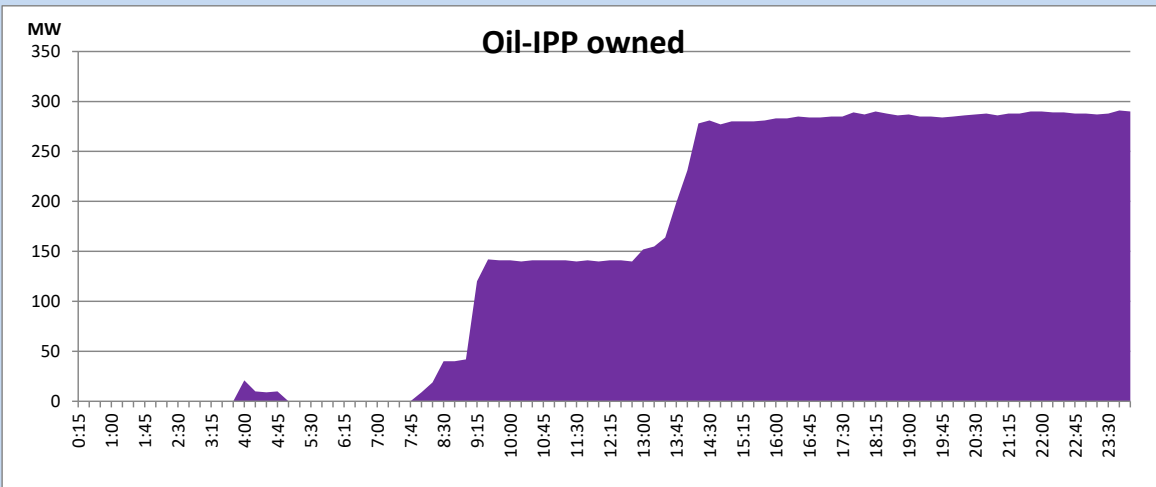
CEB Oil Plant Generation during

June 26, 2023



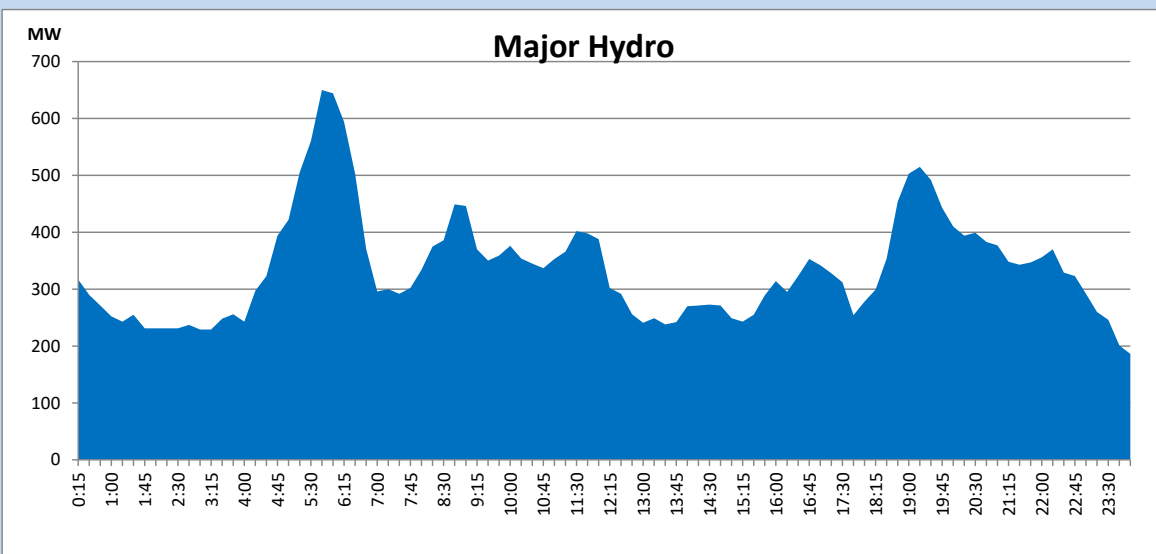
IPP Oil Plant Generation during

June 26, 2023



Major Hydro Generation during

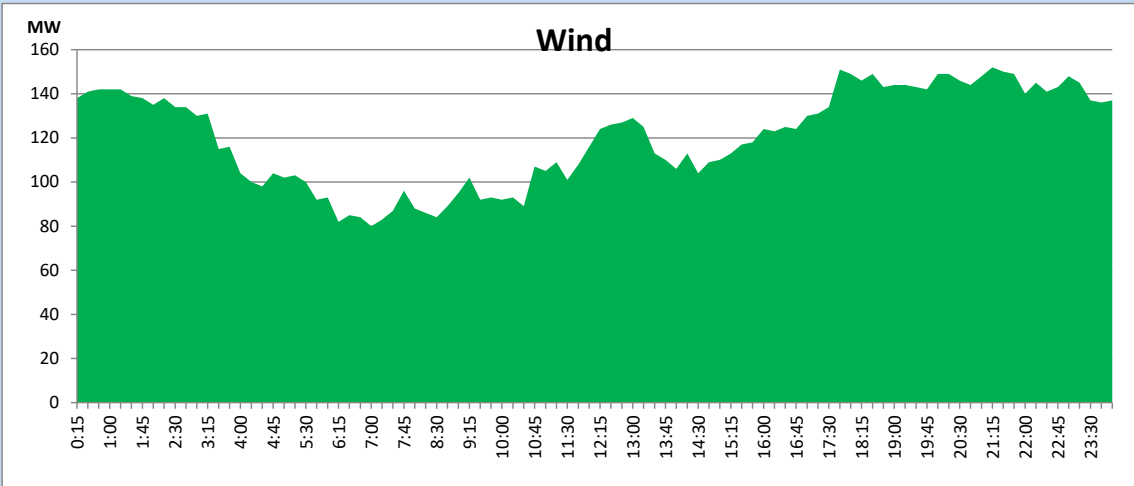
June 26, 2023



Wind Generation during

June 26, 2023

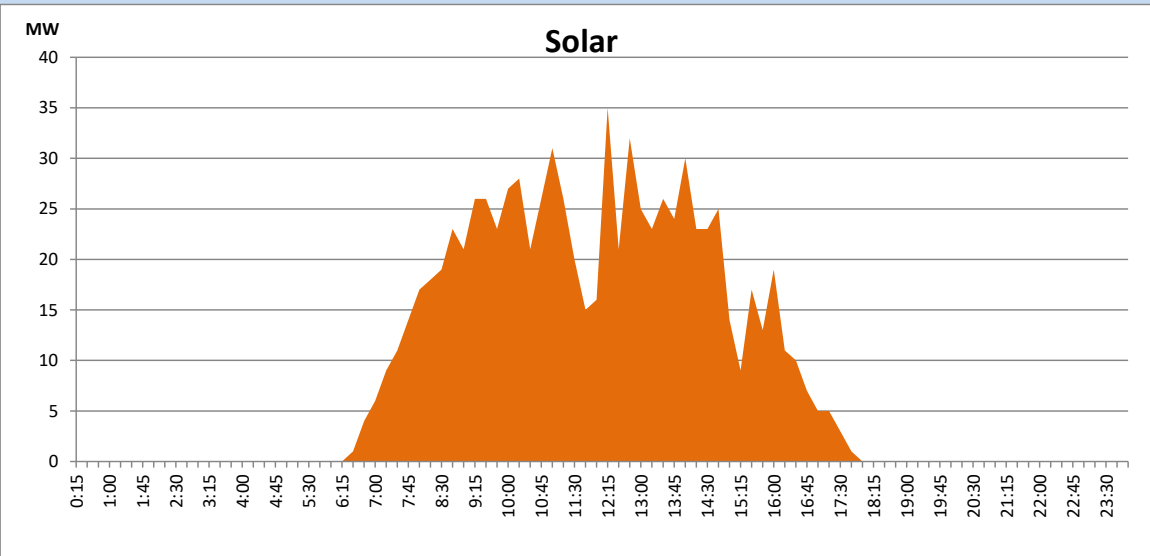
Based on Telemetered Power Stations only



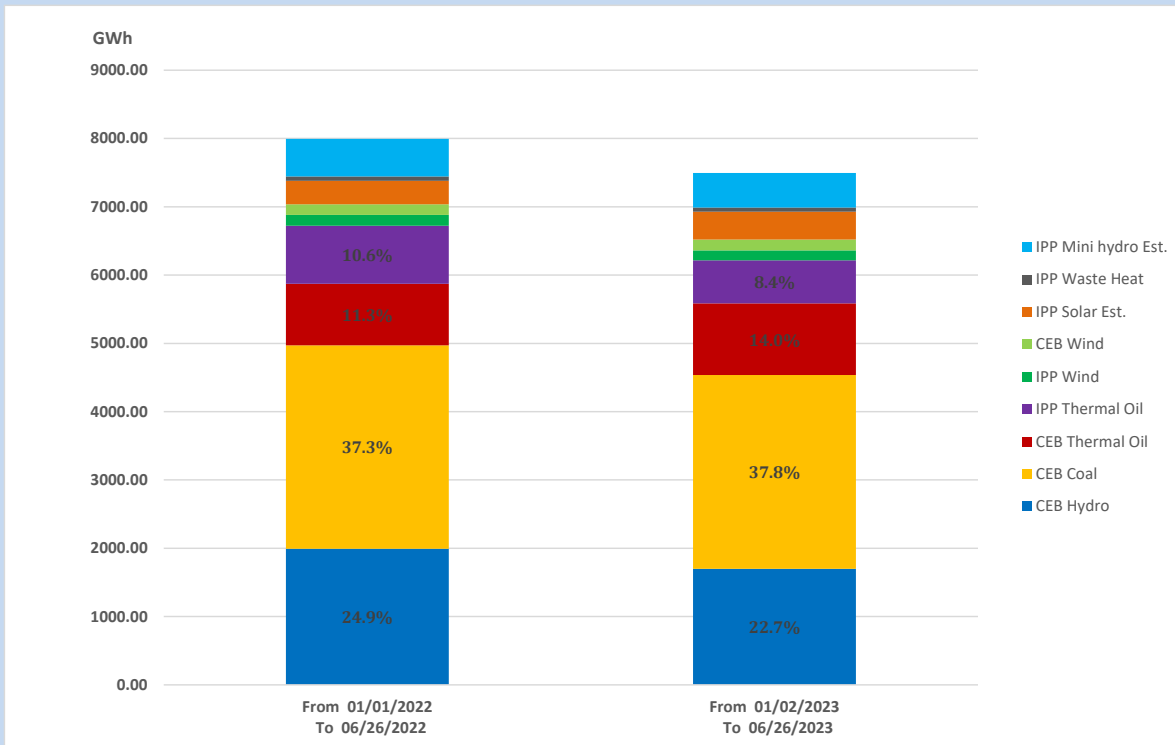
Solar Generation during

June 26, 2023

Based on Telemetered Power Stations only



15. Cumulative Dispatch Comparison with Last Year



The above figures are including contribution from roof top solar, non telemetered solar and mini hydro plants

Cumulative dispatch

From 01/01/2022 To 06/26/2022	7993
From 01/02/2023 To 06/26/2023	7500

Thermal Plant Fuel types

Power Station	Primary Fuel
CEB Thermal	
Sapugaskanda 1	Heavy Fuel
Sapugaskanda 2	Heavy Fuel
Kelanitissa Small Gas Turbines	Auto Diesel
GT 7 - Kelanitissa	Auto Diesel
Kelanitissa CCY	Naphtha or Diesel
Lakvijaya 1	Coal
Lakvijaya 2	Coal
Lakvijaya 3	Coal
Uthuru Janani	Heavy Fuel
Barge CEB	Heavy Fuel
KCCPS -2	Auto Diesel

Power Station	Primary Fuel
Private Thermal	
West Coast	Auto Diesel / Heavy Fuel

Major Incidents reported during the day

June 26, 2023

1) WCP GT 02, which was performed a forced shutdown at 4:53hrs, resumed generation at 7:53hrs. WCP GT 01, which was tripped at 4:10hrs, resumed generation at 12:45hrs.