

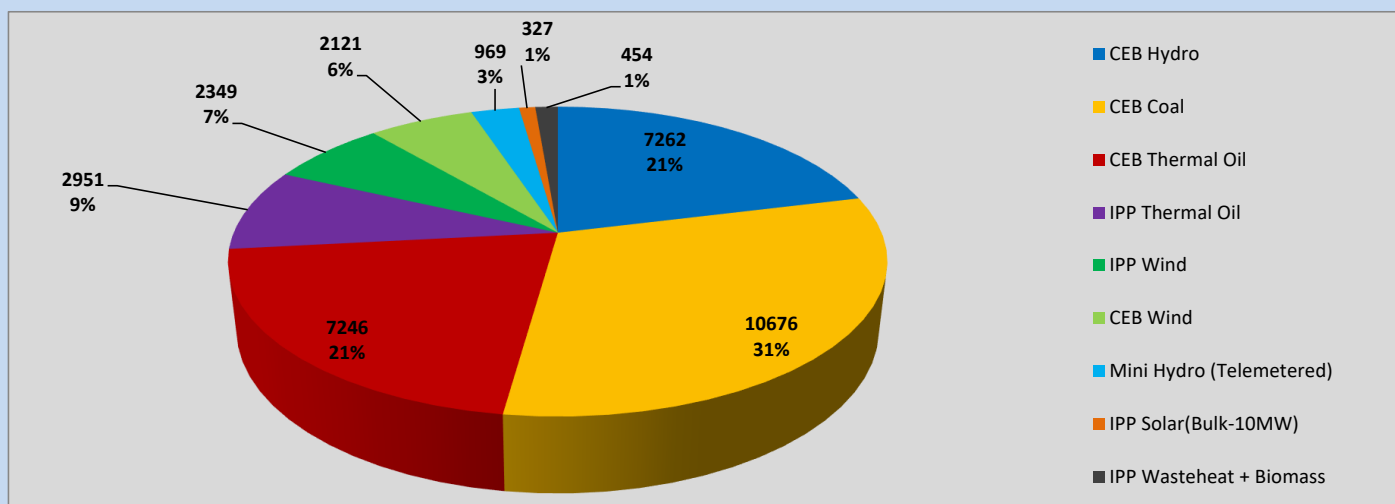
Generation and Reservoirs Statistics

June 25, 2023



PUBLIC UTILITIES COMMISSION OF SRI LANKA

Daily Generation Mix in MWh



Total Generation (Excluding estimated figures) =

34,355 MWh

Estimated figures of CEB generation report

Estimated unserved energy = 0.00 GWh

Estimated Mini Hydro (Non telemetered) = 3311 MWh

Estimated IPP Solar PV (Bulk 1-10MW) = 304 MWh

Estimated Solar Roof Top PV = 1890 MWh

Cumulative Dispatch

Following data excludes the contribution from roof top solar, non telemetered solar and mini hydro plants

For Current Month

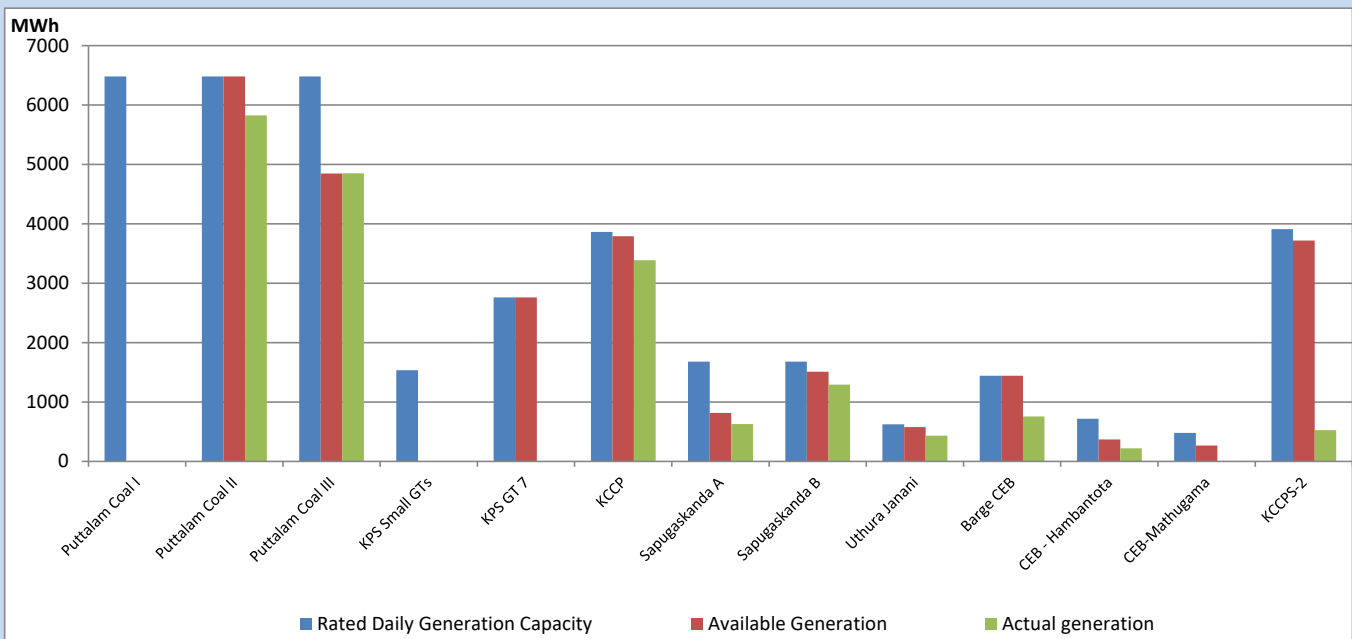
Category	Dispatch (GWh)	
CEB Hydro	216	21.70%
CEB Coal	332	33.32%
CEB Thermal Oil	192	19.30%
IPP Thermal	111	11.18%
SPP Wind	50	4.99%
CEB Wind	44	4.38%
Mini Hydro (Telemetered)	32	3.23%
IPP Solar (Bulk-10MW)	8	0.83%
IPP Wasteheat + BMP	11	1.08%
Total	996	

For Current Year

Category	Dispatch (GWh)	
CEB Hydro	1,697	25.12%
CEB Coal	2,827	41.85%
CEB Thermal Oil	1,039	15.39%
IPP Thermal	628	9.30%
SPP Wind	140	2.08%
CEB Wind	155	2.29%
Mini Hydro (Telemetered)	158	2.34%
IPP Solar (Bulk-10MW)	51	0.76%
IPP Wasteheat	58	0.86%
Total	6,753	

CEB owned Thermal Plant Dispatch

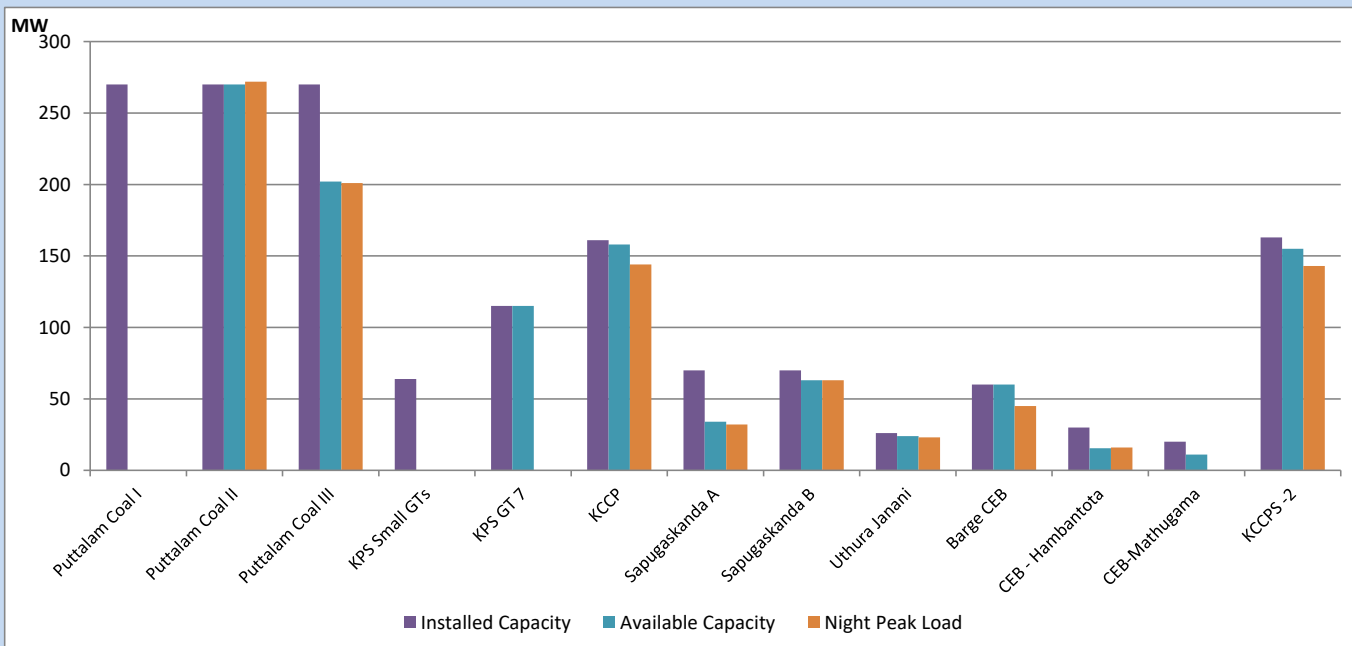
June 25, 2023



Available Generation is estimated based on plant availability at 6.00am on

June 26, 2023

CEB owned Thermal Plant Loading at the Night Peak



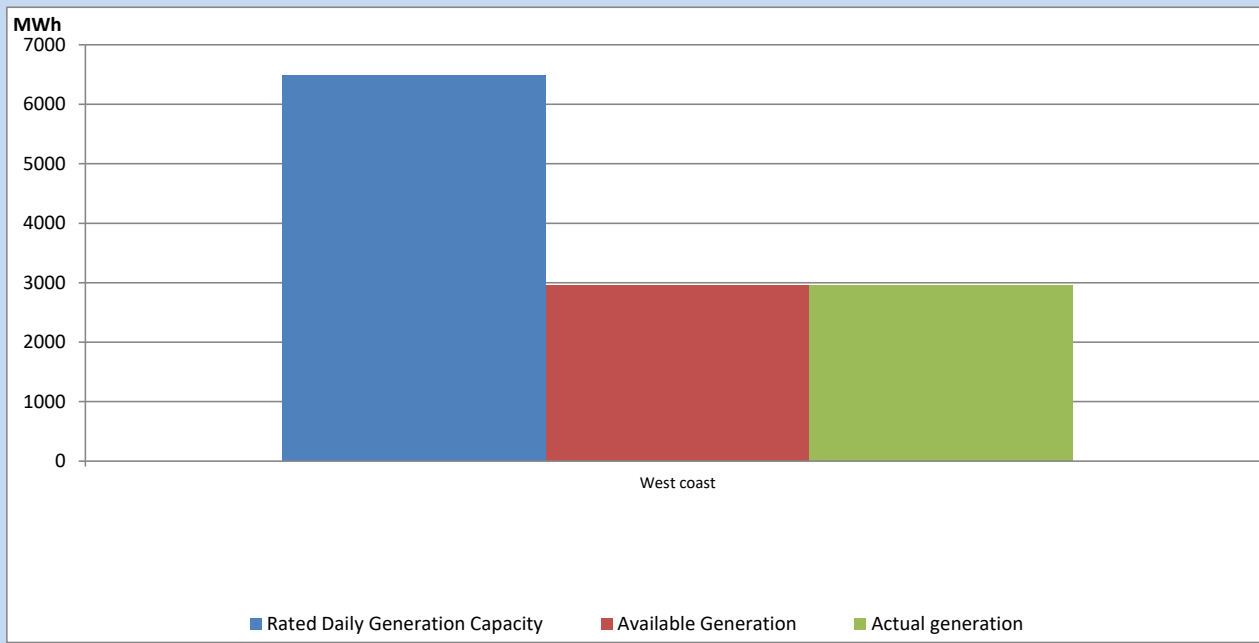
Note-

Plant availability is recorded at 6.00 am on

June 26, 2023

IPP owned Thermal Plant Dispatch

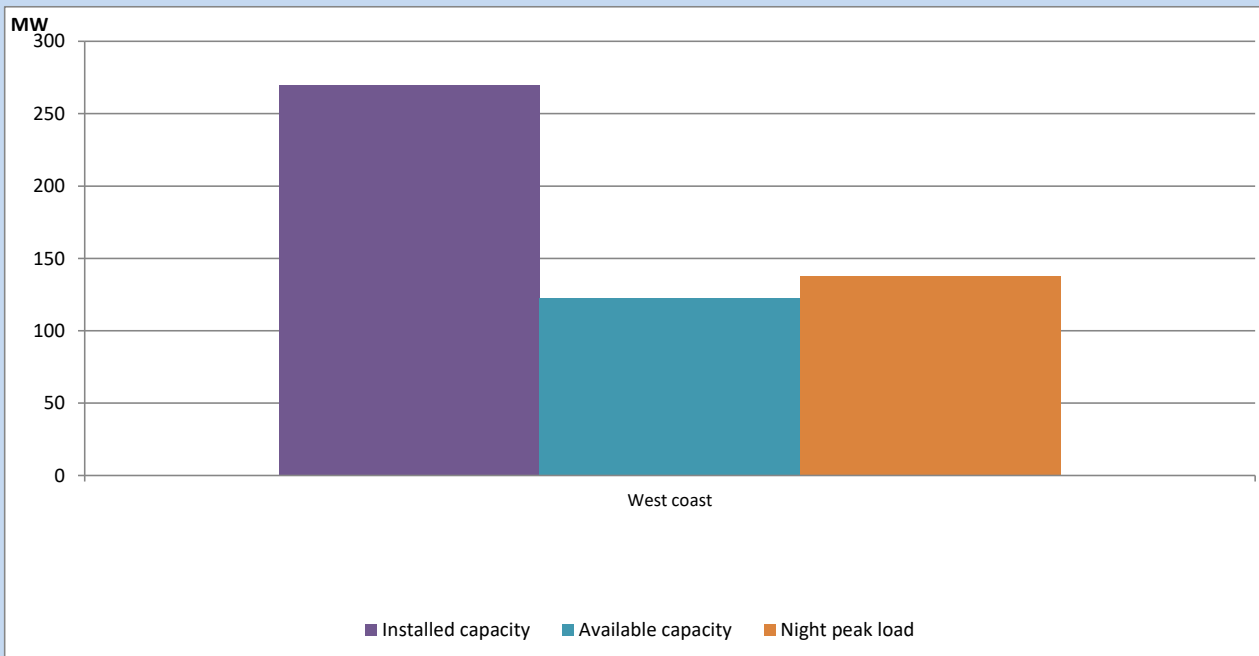
June 25, 2023



Available Generation is estimated based on plant availability at 6.00am on

June 26, 2023

IPP owned Thermal Plant Loading at the Night Peak

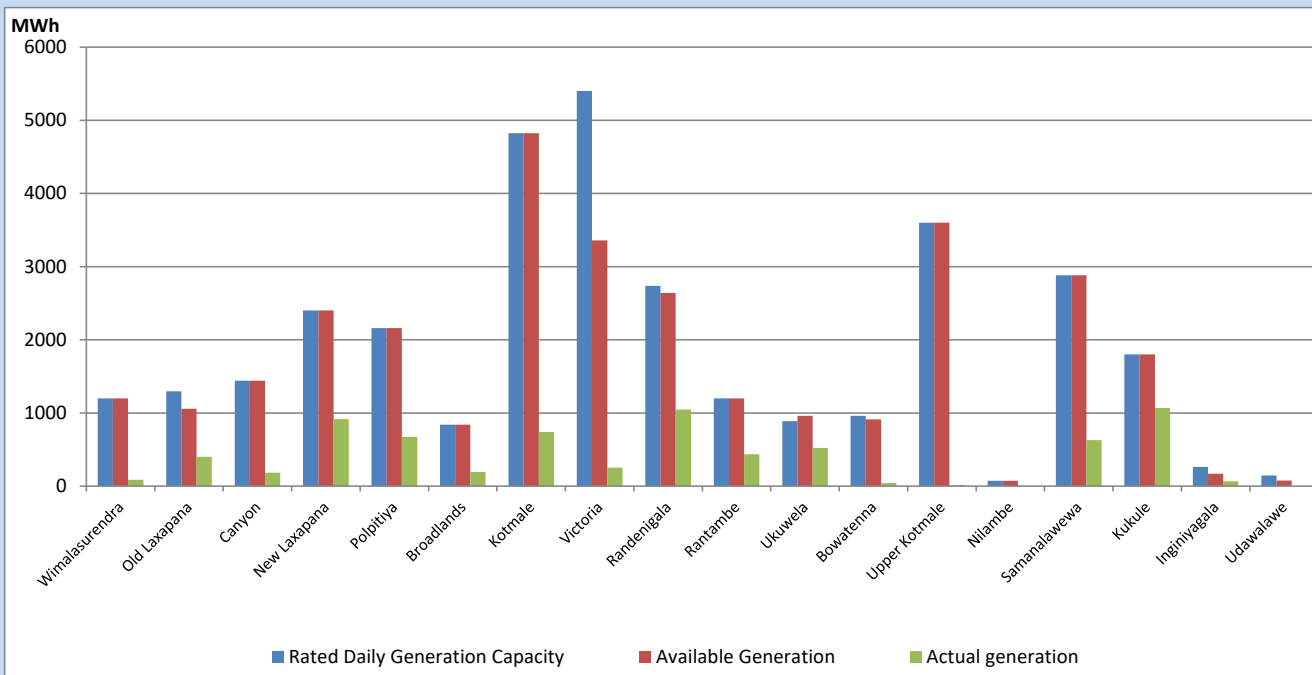


Note- Plant availability is recorded at 6.00 am on

June 26, 2023

Major Hydro Plant Dispatch

June 25, 2023

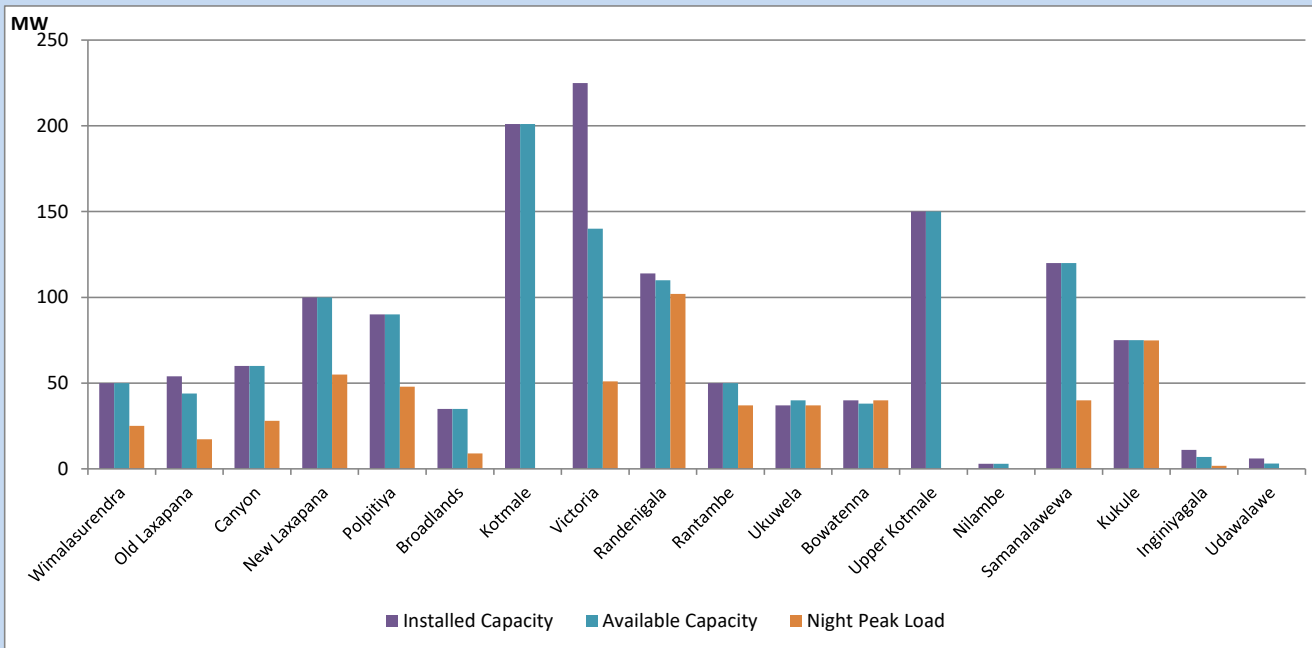


Available Generation is estimated based on plant availability at 6.00am on
Broadlands power plant is operating in the Commissioning Stage

June 26, 2023

Major Hydro Plant Loading at Night Peak

June 25, 2023



Note- Plant availability is recorded at 6.00 am on
Broadlands power plant is operating in the Commissioning Stage

June 26, 2023

Summary of Major Plant performance

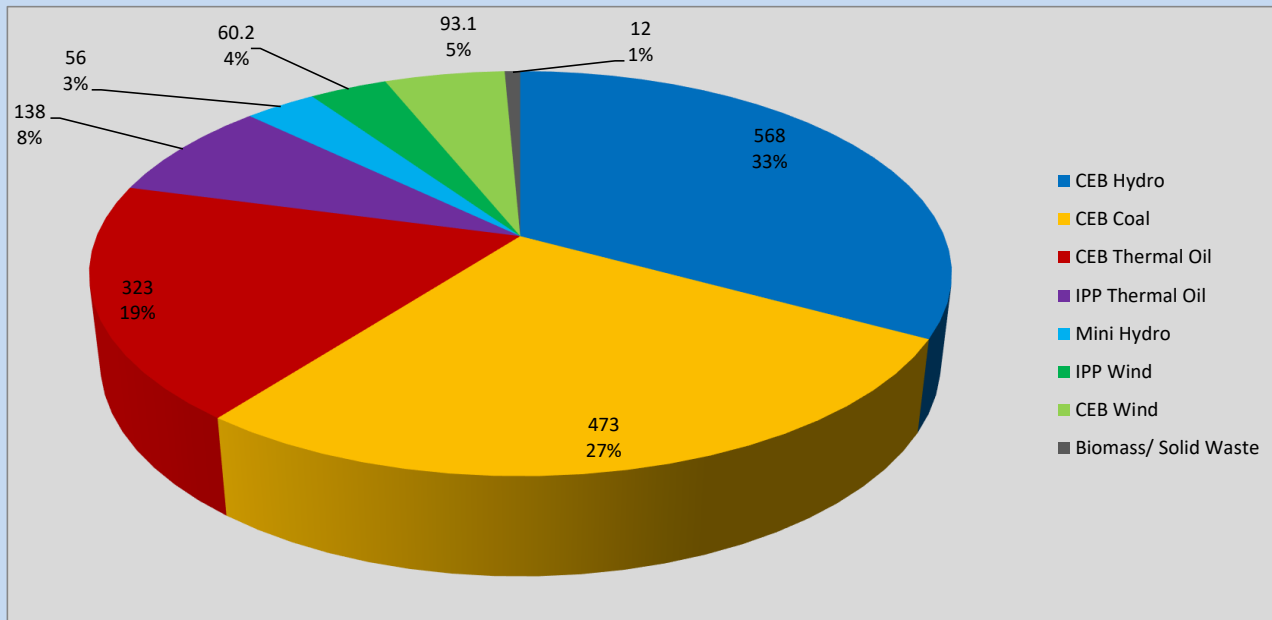
Plant	Installed Capacity	Plant Availability	Night peak Load	Plant Dispatch
	(MW)	(MW)	(MW)	(MWh)
Wimalasurendra	50	50	25	86
Old Laxapana	54	44	17	401
Canyon	60	60	28	183
New Laxapana	100	100	55	916
Polpitiya	90	90	48	672
Broadlands	35	35	9	194
Kotmale	201	201	0	740
Victoria	225	140	51	251
Randenigala	114	110	102	1,048
Rantambe	50	50	37	434
Ukuwela	37	40	37	521
Bowatenna	40	38	40	40
Upper Kotmale	150	150	0	14
Nilambe	3	3	0	1
Samanalawewa	120	120	40	629
Kukule	75	75	75	1,068
Inginiyagala	11	7	2	64
Udawalawe	6	3	0	0
Puttalam Coal I	270	0	0	0
Puttalam Coal II	270	270	272	5,826
Puttalam Coal III	270	202	201	4,850
KPS Small GTs	64	0	0	0
KPS GT 7	115	115	0	0
KCCP	161	158	144	3,386
Sapugaskanda A	70	34	32	629
Sapugaskanda B	70	63	63	1,293
Uthura Janani	26	24	23	434
Barge CEB	60	60	45	756
CEB-Hambantota	30	15	16	221
CEB-Mathugama	20	11	0	0
ACE Matara	24	0	0	0
Asia Power	50	0	0	0
KCCPS -2	163	155	143	527
West Coast	270	123	138	2,951
Nothern Power	36	0	0	0
ACE Embilipitiya	93	0	0	0
Total	3,483	2,547	1,864	34,355

Plant availability is the availability recorded at 6 am on

June 26, 2023

Contribution to the Night Peak in MW

June 25, 2023

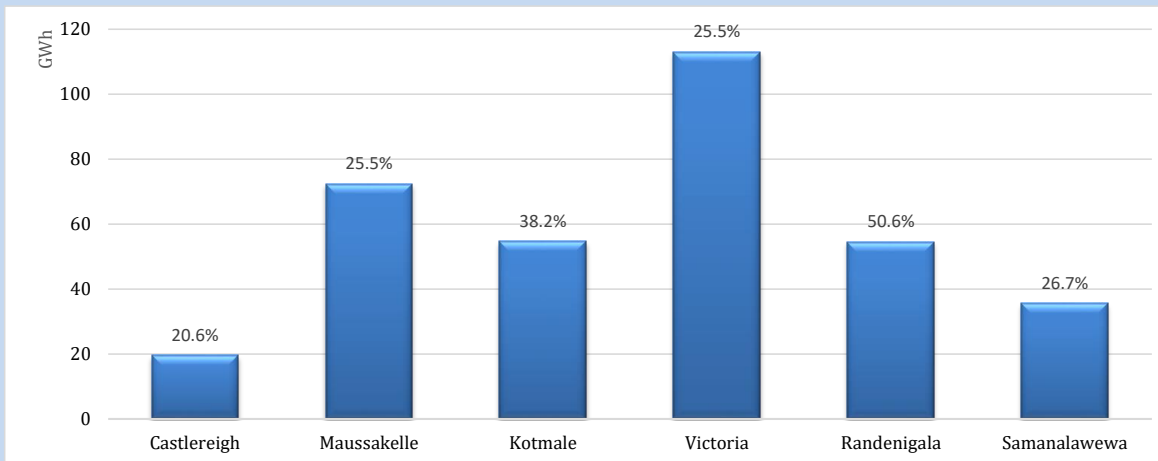


Night Peak*	1,866 MW
Day Peak Maximum Demand	1,277 MW
Day Peak Minimum Demand	1,145 MW
Off Peak Minimum Demand	1,266 MW

Above figures are excluding contribution from roof top solar, non telemetered solar and mini hydro plants

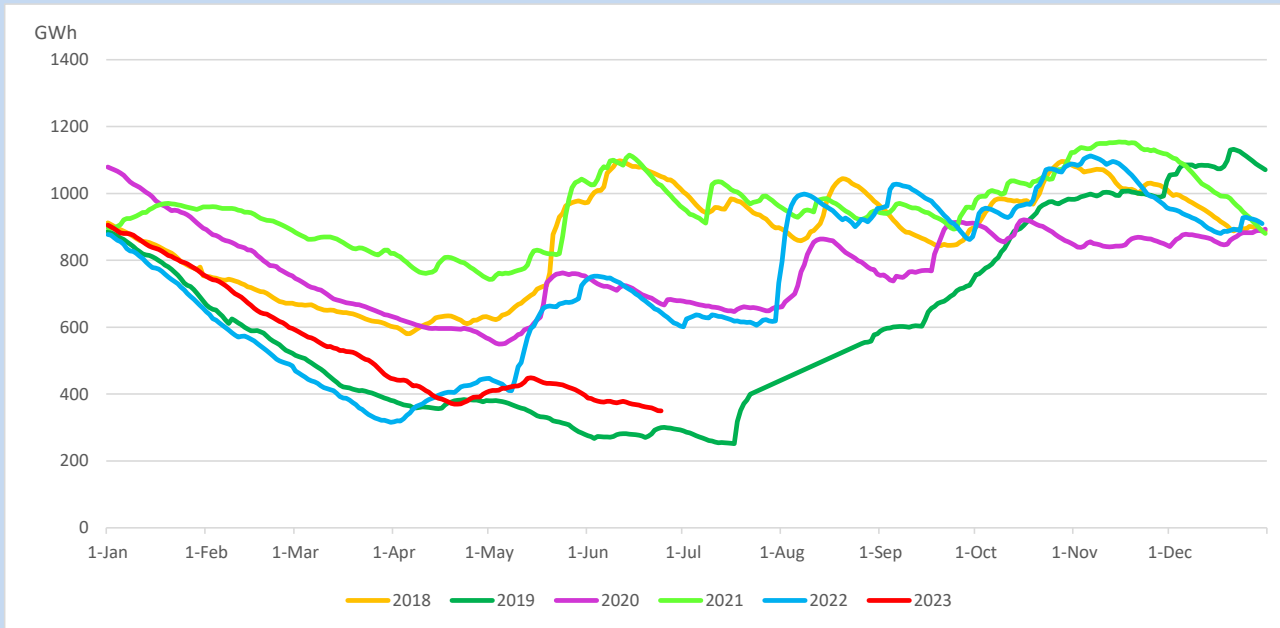
Reservoir Levels -

as at 06.00 Hr on June 26, 2023

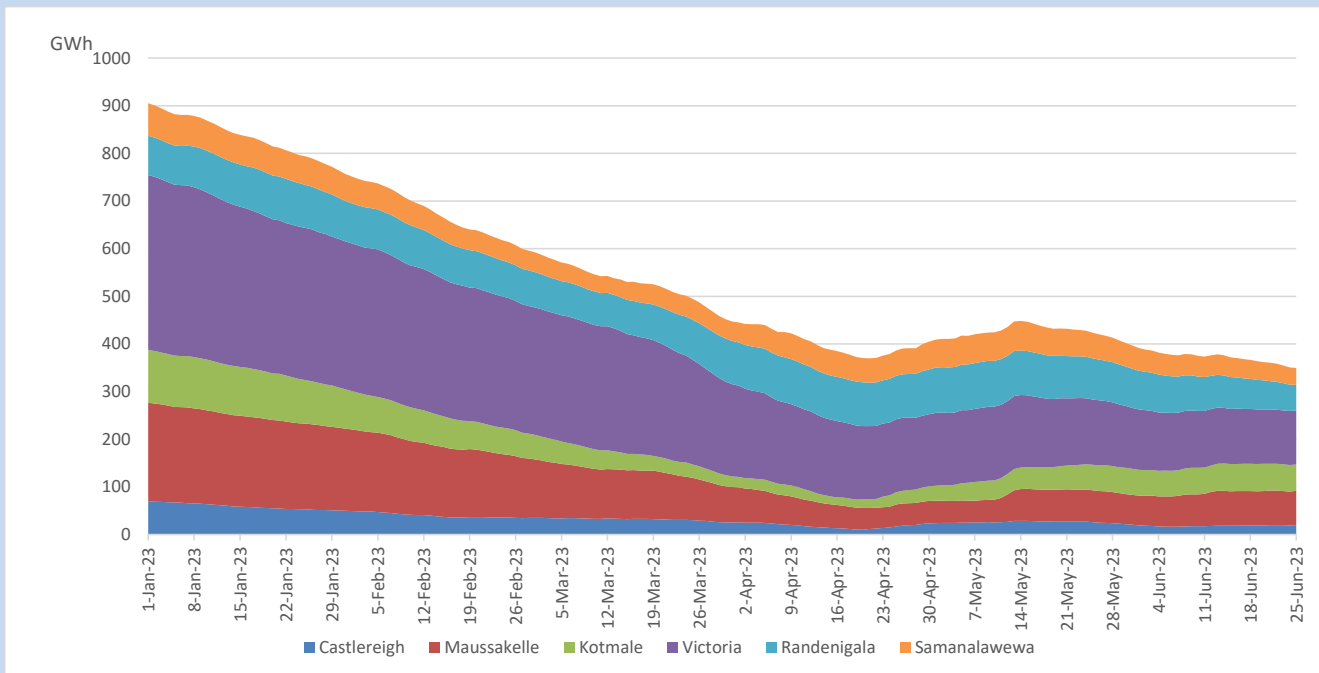


Total Reservoir Level	349.8 GWh
% of Total capacity	29.0%

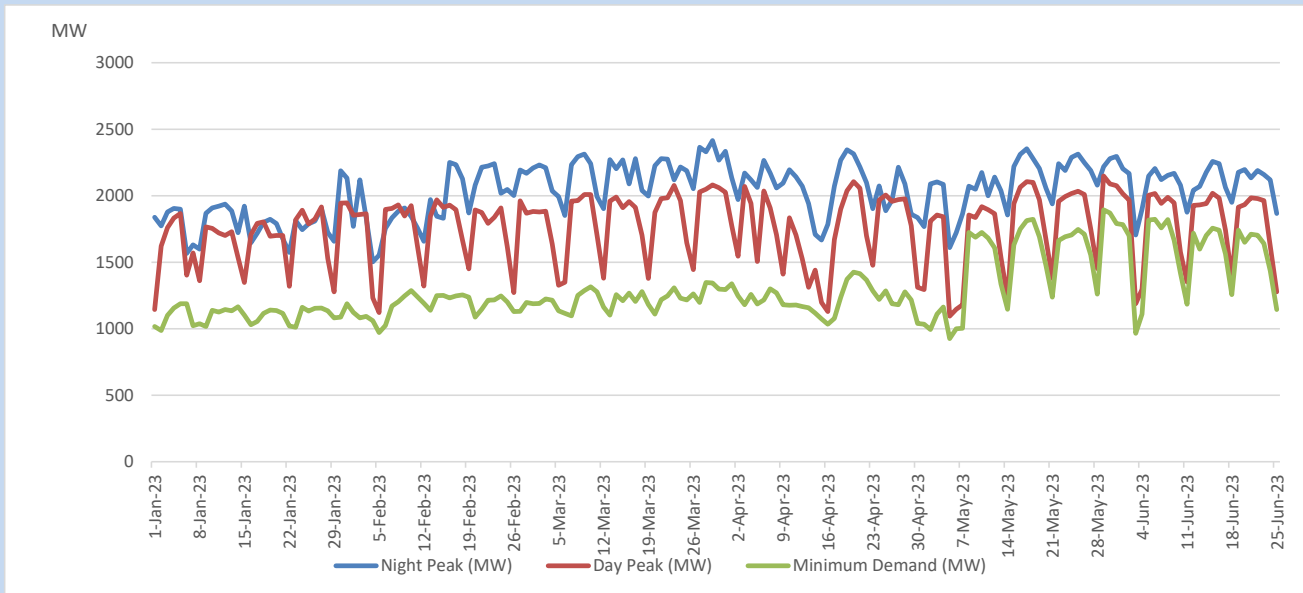
Comparison of Total Reservoir Storage Levels with Past Years



Variation of Major Hydro Reservoir Levels in the current year (GWh)



Variation of Demand during the current year

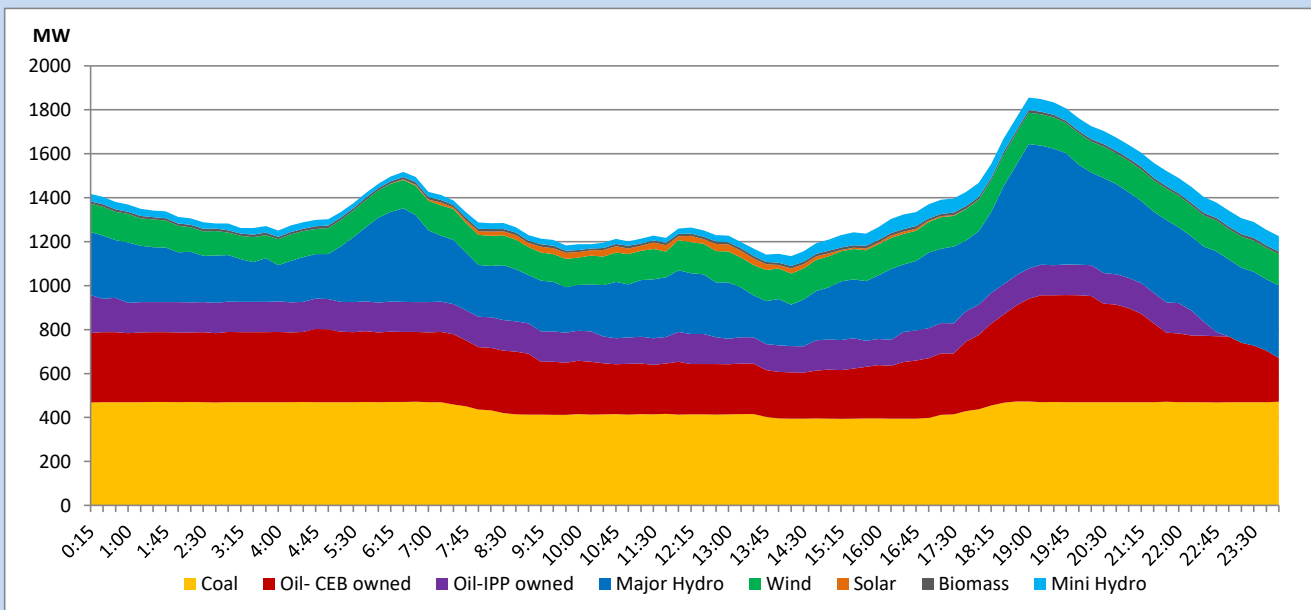


The above figures are excluding contribution from roof top solar, non telemetered solar and mini hydro plants

Daily Load Curve

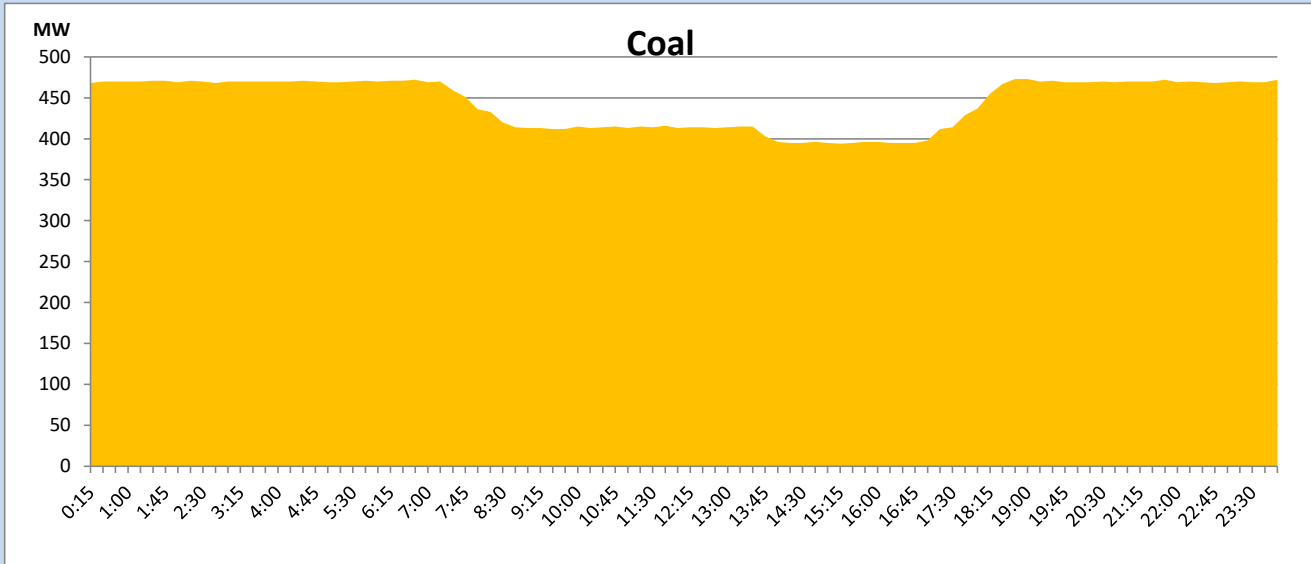
June 25, 2023

Solar and wind data is based on Telemetered Power Stations only



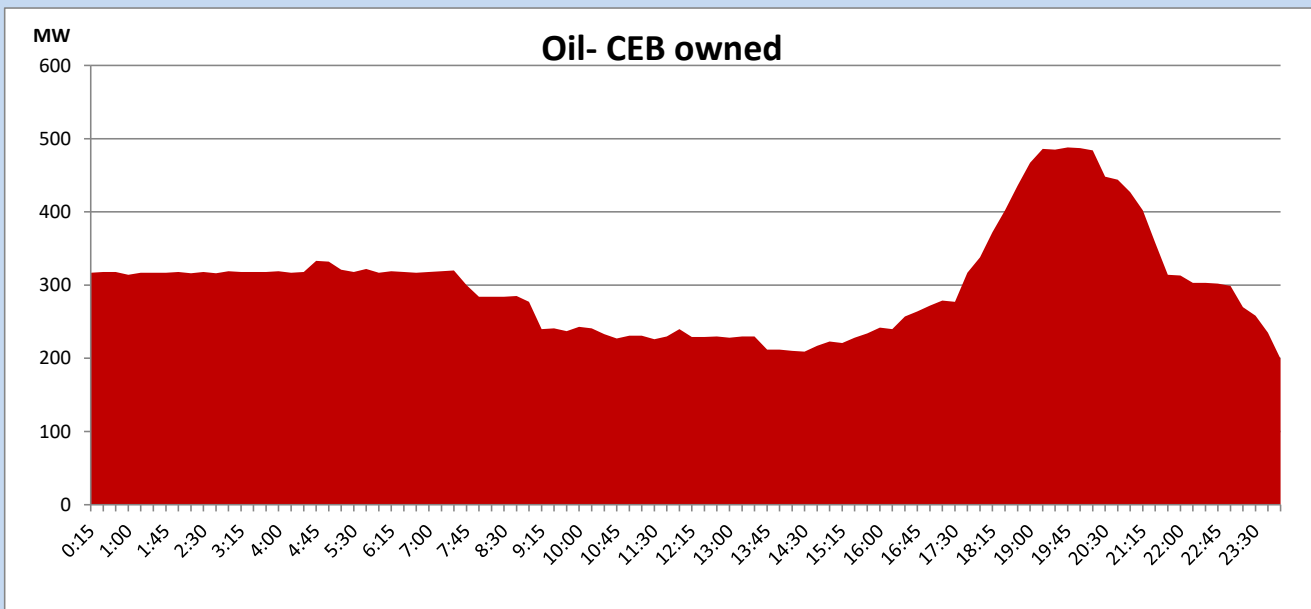
Coal Generation during

June 25, 2023



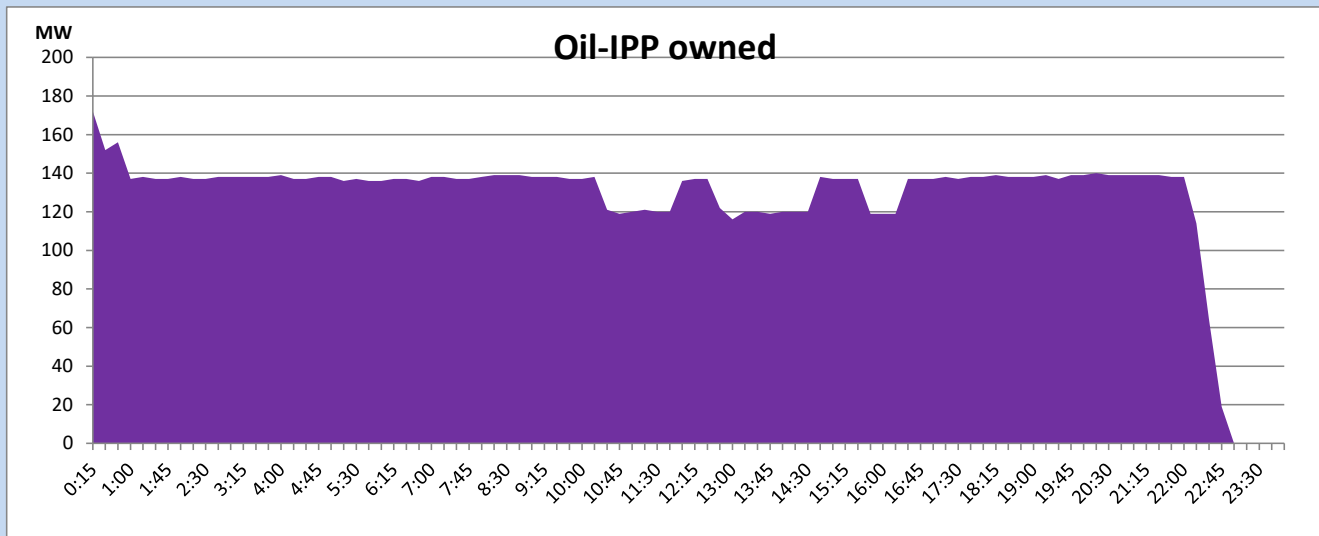
CEB Oil Plant Generation during

June 25, 2023



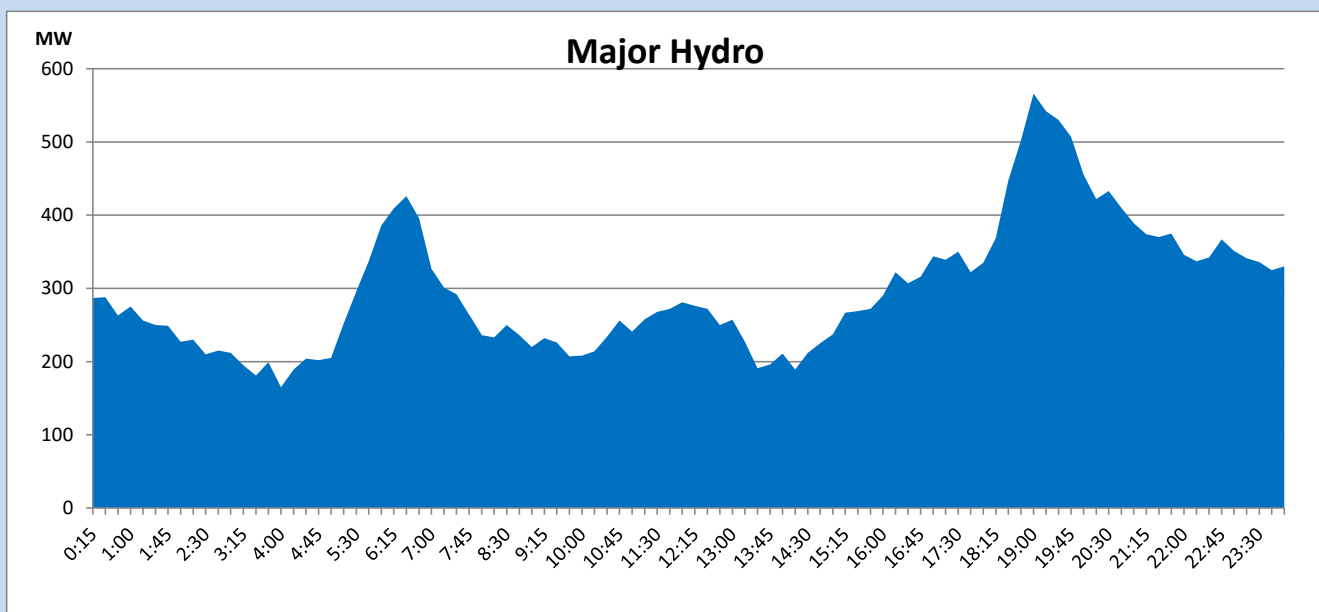
IPP Oil Plant Generation during

June 25, 2023



Major Hydro Generation during

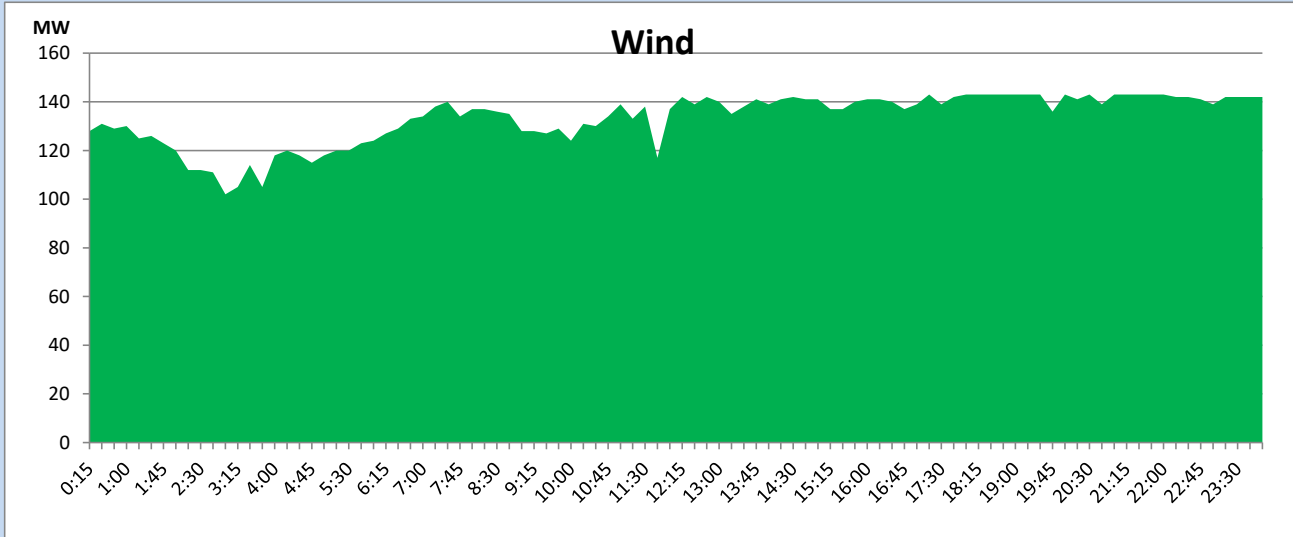
June 25, 2023



Wind Generation during

June 25, 2023

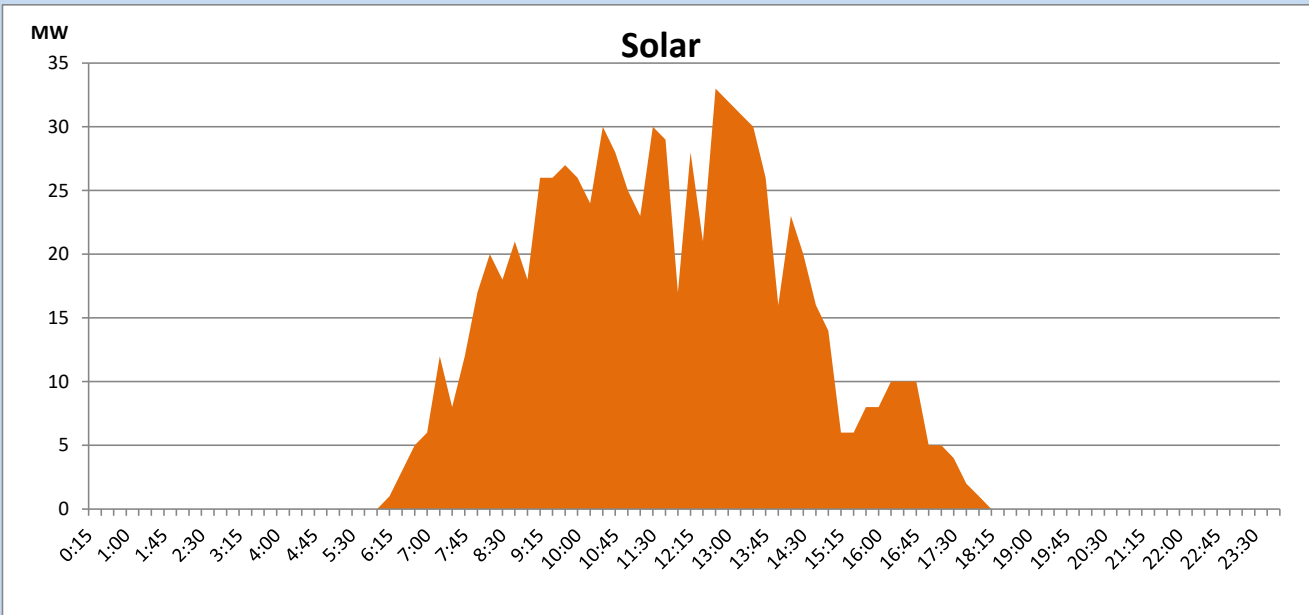
Based on Telemetered Power Stations only



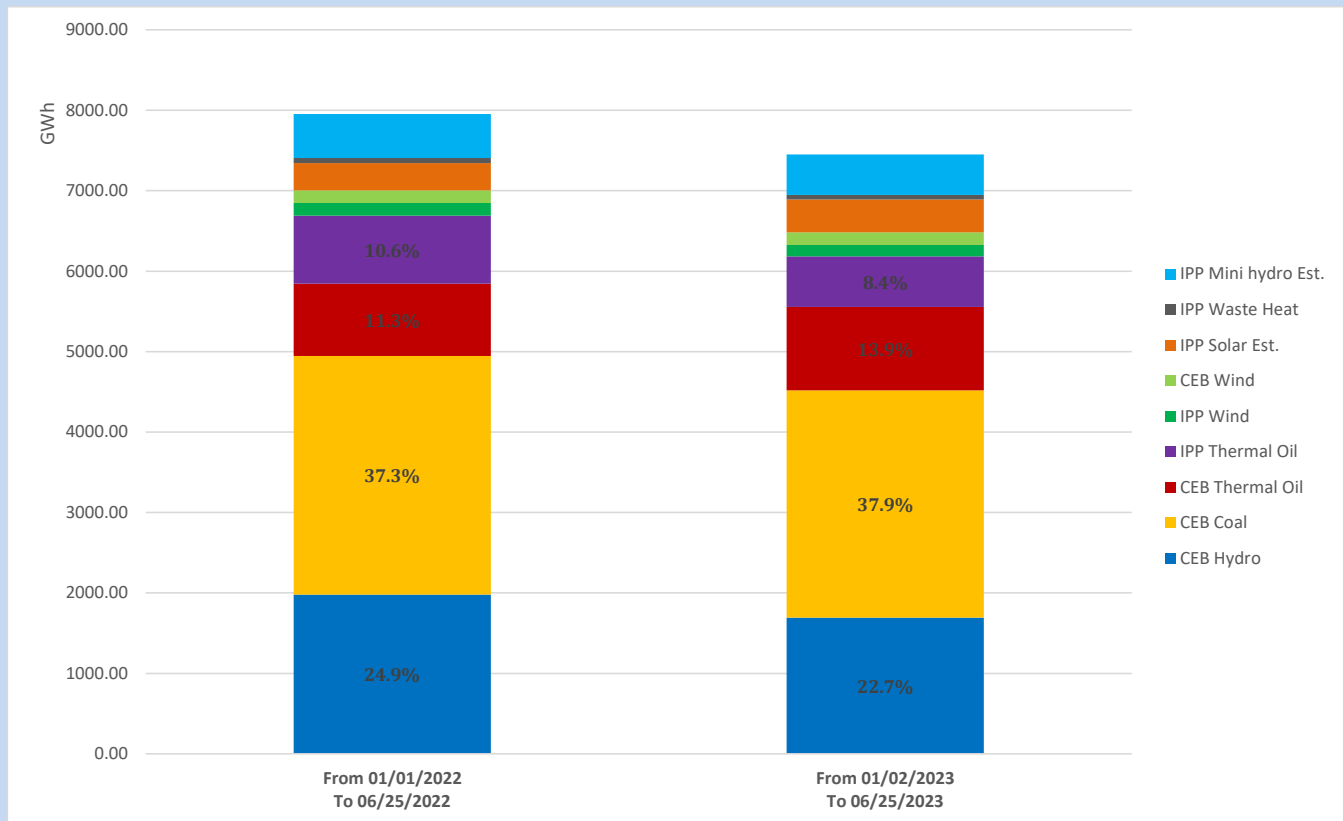
Solar Generation during

June 25, 2023

Based on Telemetered Power Stations only



Cumulative Dispatch Comparison with Last Year



The above figures are including contribution from roof top solar, non telemetered solar and mini hydro plants

Thermal Plant Fuel types

Power Station	Primary Fuel
CEB Thermal	
Sapugaskanda 1	Heavy Fuel
Sapugaskanda 2	Heavy Fuel
Kelanitissa Small Gas Turbines	Auto Diesel
GT 7 - Kelanitissa	Auto Diesel
Kelanitissa CCY	Naphtha or Diesel
Lakvijaya 1	Coal
Lakvijaya 2	Coal
Lakvijaya 3	Coal
Uthuru Janani	Heavy Fuel
Barge CEB	Heavy Fuel
KCCPS -2	Auto Diesel

Power Station	Primary Fuel
Private Thermal	
West Coast	Auto Diesel / Heavy Fuel

Major Incidents reported during the day

June 25, 2023

- 1) Old Laxapana Unit 03 tripped at 20:07hrs, rejecting 3MW from the system due to the operation of governor oil very low alarm. Old Laxapana Unit 03 is yet to resume generation.
- 2) WCP GT 01 tripped at 4:10hrs(26.06.2023) rejecting 10MW from the system and GT 02 performed a forced shutdown at 4:53hrs(26.06.2023) due to a cooling system failure.